

SOUTH SEVEN FARMS
RAFTER 4T FARMS
TRIPLE K SIMMENTALS
FORE SEE CATTLE CO.
JAYSHAW SIMMENTALS

WTV BULL FEST 19 WTV

Simmental Bull Sale

Friday, March 1, 2019 at 1 p.m.

Sale Results

49 BULLS AVERAGED \$7,410



Welcome to



Simmental Bull Sale

The BullFest group would like to welcome you all to the 14th Annual BullFest Sale 2019. We feel we have assembled a variety of good bulls to accommodate everyone's specific needs whether it be traditional, red or black. Bulls that will add pounds to your calves, to heifer bulls, to building awesome replacement females. We feel your shopping needs can be met here. Customer service is a number one priority with the BullFest group. Should an issue arise we will do what it takes to satisfy our customers. Please feel free to call with any questions on any of the bulls or stop for a farm visit prior to sale day. Thank you from the BullFest group to all our buyers and supporters and we will see you sale day!

~ BullFest Group ~

SOUTH SEVEN FARMS

Rob, Linden & Nolan Stuart

RAFTER 4T FARMS

Darrell, Loralie, Denton & Derek Tatarin

TRIPLE K SIMMENTALS

Bernie & Georgina Klammer

FORE SEE CATTLE CO.

Rod Chizawsky & Sandi Berezan

JAYSHAW SIMMENTALS

Jason & Shawna Bast

EPD EXPLANATION

EPDs are "Expected Progeny Difference". They are a useful tool in selection. EPD incorporate the individual animal with its ancestry performance. EPDs do not compare across cattle breeds. They are individual based per breed. EPDs indicate a probable variance above or below breed average for that trait for a given bull's progeny. The accuracy of EPDs for calendar year bull calves is generally about 20% (one out of five times) so use it cautiously. One of several selection tools.

SPRING 2019 SIMMENTAL EPD BREED AVERAGE

| | CE | BW | WW | YW | MILK | MCE | MWWT |
|-----|-----|-----|------|-------|------|-----|------|
| EPD | 6.6 | 3.4 | 69.3 | 102.2 | 25.2 | 4.1 | 60.2 |

Friday, MARCH 1, 2019

Sale Time: 1:00 p.m.

Camrose Regional Exhibition, Barn B - Camrose, Alberta

OFFERING 64 YEARLING BULLS

SALE DAY PHONES:

Rob Stuart (780) 632-9358

Bernie Klammer (780) 603-7833

Jason Bast (780) 603-0676

Darrell Tatarin (780) 632-9683

Rod Chizawsky (780) 632-5500

Auctioneer:

Don Oberg (780) 678-6926

Ringmen:

Darryl Snider..... (780) 385-5561

Robert Lind (780) 542-7323

Bohrson Marketing Services:

Darryl Snider..... (780) 385-5561

Matt Criddle..... (306) 539-6934



Insurance:

CFI Insurance

Monica Czech..... (780) 318-3636

Catalogue:

Patricia Shewchuk, Cattlepics.com..... (780) 603-3066

Semen Testing:

All bulls selling at the sale over the age of 12 months will be semen tested by a certified veterinarian.

100% Guarantee:

All bulls are guaranteed to be satisfactory breeders in accordance with CSA guidelines. Should a problem occur barring physical injury or mismanagement, a bull of equal value will be provided or a credit will be issued towards the purchase of another bull. If you have any problems with your purchase, please contact the breeder immediately.

Bull Development & Delivery:

The Bull Fest group will take yearling bulls back to the farm and keep bulls free of charge until April 1st. All buyers must insure the bulls if being returned to the consignor's farm.

Option A:

Bulls can be picked up at Camrose on sale day and a \$100 discount will be deducted from the purchase price.

Option B:

Bulls can return to the farm and will be delivered up to 200km at no charge at a convenient time for both the seller and buyer. Points beyond 200km will be at cost.

Option C:

Bulls can return to the farm and be picked up at the buyer's convenience.

Catalogue can be viewed online at:

www.bohrson.com

Remember to
join us for
lunch in
the barn
at 11:30 A.M.!

Thank You to
AFSC VEGREVILLE
for their
generous contribution
of providing donuts.

Thank You to
COUNTRY JUNCTION
and
TROUW NUTRITION
for their generous contribution
towards the lunch.



Can't make it to the sale? Internet Bidding Available.

To view this sale visit www.dlms.ca, Fill out the registration form located under registration and sign-up for your free user account and select a username and password.

BIDDERS - To be approved as a bidder, Log in to dlms.ca and click BUYER APPROVAL tab, select the sale you are interested in bidding at and click sign up.

For more information

Call DLMS Reps:

Whitney Bosovich 780.991-3025

Mark Shologan 780.699.5082



SOUTH SEVEN FARMS

Rob, Linden & Nolan Stuart
Box 2118,
Vegreville, AB.
T9C 1T3

Cell: (780) 632-9358
Email: sseven@telusplanet.net

Directions to Farm:
From Vegreville, 2 miles west,
7 miles south on Holden Road #152, ¾ mile east on #512

All bulls given their first shot of foot rot vaccine fusogard. South Seven reserves the right to collect semen for in herd use on any of our sale bulls, at the breeder's expense and buyer's convenience.



SOUTHSEVEN BIG BLUE 5F

Scurred Full Fleckvieh S1247809 STU 5F Jan.05/18

BW: 96 \\\ ADJ WW: 862 \\\ ADJ YW: 1483

OUT OF SALE



KLONDIKE GOLD RUSH 418B
ANCHOR "T" RUSTY 59G
ANCHOR "T" HELGA 10Y
Sire: STARWEST POL BLUEPRINT
CHAMPS BRAVO
PHS HOMOZYGOUS XCEPTIONAL
WCC WELLS' PLD TALULAH 7T

DOUBLE BAR D ADONIS 603N
BLCC MR ADONIS 30X
BLCC MISS HOUSTON 144U
Dam: SOUTHSEVEN MISS ADONIS52B
SOUTH SEVEN NAVIGATOR 33N
SOUTH SEVEN MISS 70S
DFM ELMIRA 543E

| CE | BW | WW | YW | MILK | MCE | MWWT |
|------|-----|------|-------|------|-----|------|
| 10.7 | 4.1 | 80.3 | 118.3 | 31.6 | 8.3 | 71.8 |

With the influence Blueprint and Stuey have had on a number of fullblood herds, it was exciting to try Blueprint on Stuey's full sister. Resulting in this powerfull, dark red herd sire. Miss Adonis 52B has definitely developed into a elite cow in our herd. **NON-DILUTER**

SOUTHSEVEN BLUE RAY 18F

Scurred Full Fleckvieh S1248035 STU 18F Jan.11/18

BW: 80 \\\ ADJ WW: 771 \\\ ADJ YW: 1430

OUT OF SALE



KLONDIKE GOLD RUSH 418B
ANCHOR "T" RUSTY 59G
ANCHOR "T" HELGA 10Y
Sire: STARWEST POL BLUEPRINT
CHAMPS BRAVO
PHS HOMOZYGOUS XCEPTIONAL
WCC WELLS' PLD TALULAH 7T

ANCHOR D IMAX 250Y
SOUTHSEVEN AFFINITY 40A
SOUTH SEVEN MISS 8Y
Dam: SOUTH SEVEN MISS SUGAR 4C
SOUTH SEVEN RAZZMATAZZ 7R
SOUTHSEVEN MISS RAZZ 7A
SOUTH SEVEN MISS 96X

| CE | BW | WW | YW | MILK | MCE | MWWT |
|------|-----|------|-------|------|------|------|
| 13.7 | 2.1 | 67.2 | 101.8 | 35.7 | 11.2 | 69.3 |

A low birth weight Blueprint son with the added calving ease of Imax on the bottom side. **NON-DILUTER**

SOUTHSEVEN POLLED PERFECTION

Homo Polled Full Fleckvieh P1249583 STU 51F Jan.23/18

3

BW: 90 \\\ ADJ WW: 816 \\\ ADJ YW: 1520

\$ 18,250
JENSEN SIMMENTALS

| CE | BW | WW | YW | MILK | MCE | MWWT |
|-----|-----|------|-------|------|-----|------|
| 8.9 | 3.3 | 74.2 | 115.0 | 32.7 | 4.7 | 69.8 |

I think this bull checks off a lot of boxes for someone looking for a full fleck bull. Homo polled, moderate birth weight and excellent muscle expression. **HOMO POLLED NON-DILUTER**

KLONDIKE GOLD RUSH 418B
ANCHOR "T" RUSTY 59G
ANCHOR "T" HELGA 10Y
Sire: **STARWEST POL BLUEPRINT**
CHAMPS BRAVO
PHS HOMOZYGOUS XCEPTIONAL
WCC WELLS' PLD TALULAH 7T

DOUBLE BAR D MAESTRO 100S
ANCHOR D VIPER 103W
PRL LOPEZ 147L
Dam: **SOUTH SEVEN MISS VIPER24Z**
SOUTH SEVEN TOPNOTCH 29T
SOUTH SEVEN MISS 12X
SOUTH SEVEN MISS LAKI 61J

SOUTHSEVEN EGO 13F

Horned Full Fleckvieh 1248030 STU 13F Jan.09/18

4

BW: 78 \\\ ADJ WW: 790 \\\ ADJ YW: 1350

\$ 7,750
RED WILLOW RANCH
LTD

PROSTOCK HUGO 7052T
FGAF BARBOSSA 707X
FGAF BARBARELLA 839L
Sire: **ANCHOR D MACS EGO 132B**
BAR 5 SA STRIDE 413P
ANCHOR D ANGELICA 132Z
ANCHOR D TIA 235T

GREAT GUNS FERDINAND 13Z
SOUTH SEVEN FERDI 3D
M-RIDGE BRIANA 064B
Dam: **SOUTH SEVEN MISS FERDI 42D**
SOUTH SEVEN TOPNOTCH 29T
SOUTH SEVEN MISS TOP 7Z
SOUTH SEVEN MISS 69X

| CE | BW | WW | YW | MILK | MCE | MWWT |
|------|-----|------|------|------|-----|------|
| 10.5 | 1.1 | 64.9 | 89.3 | 36.8 | 6.8 | 69.3 |

We've used Ego on our heifers for the last three years, with excellent calving results. Miss Ferdi 42D is a dark red, blazed faced cow and was easily the top fullblood heifer left back that year. **NON-DILUTER**

SOUTHSEVEN POLLED EGO 19F

Polled Full Fleckvieh P1248037 STU 19F Jan.11/18

BW: 77 \\\ ADJ WW: 797 \\\ ADJ YW: 1482

\$8,000**CAMPBELL LAKE
FARMS**

PROSTOCK HUGO 7052T
FGAF BARBOSSA 707X
FGAF BARBARELLA 839L
Sire: **ANCHOR D MACS EGO 132B**
BAR 5 SA STRIDE 413P
ANCHOR D ANGELICA 132Z
ANCHOR D TIA 235T

VIRGINIA WALKER 97W
SIBELLE DIRTY HARRY 25Z
SIBELLE GOLDA
Dam: **SOUTH SEVEN MISS DYNASTY 7D**
MFI WHISTLER 47L
SOUTH SEVEN MISS 8X
SOUTH SEVEN MISS HAR 77N

| CE | BW | WW | YW | MILK | MCE | MWWT |
|------|-----|------|-------|------|-----|------|
| 12.0 | 0.9 | 70.9 | 108.6 | 39.5 | 8.8 | 75.0 |

Our second Ego sired bull with a bonus he's polled. With a low birth and raised by a highly productive Dirty Harry female, we think he could work in a number of herds. **NON-DILUTER**

SOUTHSEVEN CAPTAIN 30F

Horned Full Fleckvieh 1248054 STU 30F Jan.13/18

BW: 88 \\\ ADJ WW: 769 \\\ ADJ YW: 1398

\$14,500**B BAR C
SIMMENTALS**

SUNNY VALLEY UPGRADE 47U
BEECH BROS BOOSTER 52Y
EAGLE-RIDGE 52P
Sire: **SUNVILLE CAPTAIN**
SOUTH SEVEN NORTHERN 29N
KOP MS NORTH 109W
KOP MS NANCY 69N

DOUBLE BAR D ADONIS 603N
BLCC MR ADONIS 30X
BLCC MISS HOUSTON 144U
Dam: **SOUTHSEVEN MISS ADONIS44C**
SOUTH SEVEN TOPNOTCH 29T
SOUTH SEVEN MISS TOP 52Z
MFI BLUTE 8130

| CE | BW | WW | YW | MILK | MCE | MWWT |
|-----|-----|------|------|------|-----|------|
| 4.6 | 3.8 | 60.4 | 84.8 | 37.6 | 3.6 | 67.8 |

A moderate framed bull with tons of eye appeal, who is well pigmented, has good hair and is dark red. His dam is now two for two, with her first calf making the sale last year.

SOUTHSEVEN DORIN 31F

Horned Full Fleckvieh 1248056 STU 31F Jan.14/18

BW: 95 \\\ ADJ WW: 758 \\\ ADJ YW: 1361

OUT OF SALE

SUNNY VALLEY UPGRADE 47U
BEECH BROS BOOSTER 52Y
EAGLE-RIDGE 52P
Sire: **SUNVILLE CAPTAIN**
SOUTH SEVEN NORTHERN 29N
KOP MS NORTH 109W
KOP MS NANCY 69N

DOUBLE BAR D ADONIS 603N
BLCC MR ADONIS 30X
BLCC MISS HOUSTON 144U
Dam: **SOUTHSEVEN MISS ADONIS83B**
SOUTH SEVEN TOPNOTCH 29T
SOUTH SEVEN 29Y
SOUTH SEVEN MISS HAR 58P

| CE | BW | WW | YW | MILK | MCE | MWWT |
|-----|-----|------|------|------|-----|------|
| 1.7 | 6.3 | 66.9 | 95.3 | 36.7 | 1.3 | 70.2 |

Our Adonis females are becoming some of our big time producers. STU 83B is leading the charge. We bred her back to Captain with another crackerjack bull calf on the ground. **NON-DILUTER**

SOUTHSEVEN FUGITIVE 56F**Horned Fullblood 1249587 STU 56F Jan.27/18****8****BW: 102 \\\ ADJ WW: 811 \\\ ADJ YW: 1361****NO SALE**

SUNNY VALLEY UPGRADE 47U
BEECH BROS BOOSTER 52Y
EAGLE-RIDGE 52P
Sire: SUNVILLE CAPTAIN
SOUTH SEVEN NORTHERN 29N
KOP MS NORTH 109W
KOP MS NANCY 69N

DOUBLE BAR D ADONIS 603N
BLCC MR ADONIS 30X
BLCC MISS HOUSTON 144U
Dam: SOUTHSEVEN MISSADONIS113Z
SOUTH SEVEN TOPNOTCH 29T
SOUTH SEVEN MISS 47W
SOUTH SEVEN JEZEBEL 4J

| CE | BW | WW | YW | MILK | MCE | MWWT |
|-----|-----|------|------|------|-----|------|
| 1.8 | 5.7 | 60.6 | 81.2 | 37.9 | 1.7 | 68.2 |

A bull raised by one of the best cows in the herd. She has a beautiful square tight udder, tons of volume and excellent feet and legs.

SOUTHSEVEN FORZANDO 74F**Horned Full Fleckvieh 1249833 STU 74F Feb.06/18****9****BW: 98 \\\ ADJ WW: 811 \\\ ADJ YW: 1395****\$6,500****FORE SEE CATTLE**

SUNNY VALLEY UPGRADE 47U
BEECH BROS BOOSTER 52Y
EAGLE-RIDGE 52P
Sire: SUNVILLE CAPTAIN
SOUTH SEVEN NORTHERN 29N
KOP MS NORTH 109W
KOP MS NANCY 69N

SOUTH SEVEN RAZZMATAZZ 7R
SOUTH SEVEN TOPNOTCH 29T
SOUTH SEVEN KELTIE 2K
Dam: SOUTH SEVEN MISS TOP 47Z
HSN CARGO 49J
SOUTH SEVEN MISS CARGO71T
RICOCHET GLORY 75G

| CE | BW | WW | YW | MILK | MCE | MWWT |
|-----|-----|------|------|------|-----|------|
| 0.8 | 6.2 | 67.5 | 94.5 | 36.3 | 0.3 | 70.1 |

We sourced the Captain bull to add a little more frame on some of the more moderate Adonis and Topnotch females. He's done that and has added tons of hair on his calves with that soggy loose hide. **NON-DILUTER**

SOUTHSEVEN FRANKLIN 77F**Horned Full Fleckvieh 1249839 STU 77F Feb.07/18****10****BW: 97 \\\ ADJ WW: 823 \\\ ADJ YW: 1503****\$6,900****CONRAD BIELESCH**

SUNNY VALLEY UPGRADE 47U
BEECH BROS BOOSTER 52Y
EAGLE-RIDGE 52P
Sire: SUNVILLE CAPTAIN
SOUTH SEVEN NORTHERN 29N
KOP MS NORTH 109W
KOP MS NANCY 69N

SOUTH SEVEN RAZZMATAZZ 7R
SOUTH SEVEN TOPNOTCH 29T
SOUTH SEVEN KELTIE 2K
Dam: SOUTHSEVEN MISS TOP 13A
SOUTH SEVEN LANCELOT 6L
SOUTH SEVEN MISS LANCE26P
RIVERBEND DELIGHT 11H

| CE | BW | WW | YW | MILK | MCE | MWWT |
|-----|-----|------|-------|------|-----|------|
| 1.3 | 5.6 | 71.0 | 102.0 | 37.7 | 1.1 | 73.2 |

If you're looking for a bull to add milk into your herd, this bull ranks in the top 1%. He's got that extra stretch and frame to add pounds on your calves. **NON-DILUTER**

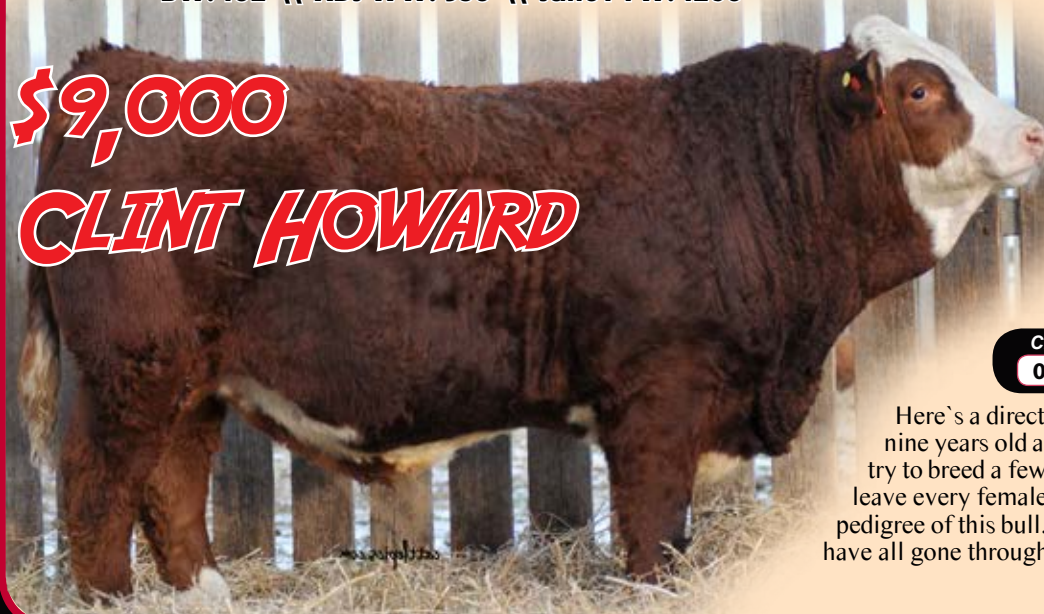
SOUTHSEVEN FUSION 80F**Horned Full Fleckvieh 1249846 STU 80F Feb.11/18****11****BW: 105 \ \ ADJ WW: 886 \ \ ADJ YW: 1478****\$11,500****TOM KNUDSEN**

| CE | BW | WW | YW | MILK | MCE | MWWT |
|-----|-----|------|-------|------|-----|------|
| 0.4 | 7.4 | 73.2 | 102.4 | 37.8 | 1.2 | 74.4 |

We had to sell Captain this year and would of considered keeping Fusion as a replacement. Raised by a Adonis female limits the amount we could of used him though. That's how much we think of him. **NON-DILUTER**

SUNNY VALLEY UPGRADE 47U
BEECH BROS BOOSTER 52Y
EAGLE-RIDGE 52P
Sire: **SUNVILLE CAPTAIN**
SOUTH SEVEN NORTHERN 29N
KOP MS NORTH 109W
KOP MS NANCY 69N

DOUBLE BAR D ADONIS 603N
BLCC MR ADONIS 30X
BLCC MISS HOUSTON 144U
Dam: **SOUTHSEVEN MISS ADONIS83Z**
BHL WESTERN 36R
SOUTHSEVEN MISS WEST 19W
SOUTH SEVEN LEXUS 66L

SOUTHSEVEN MR ADONIS 106F**Horned Full Fleckvieh 1265008 STU 106F Mar.20/18****12****BW: 102 \ \ ADJ WW: 930 \ \ Jan01 YW: 1260****\$9,000****CLINT HOWARD**

SOLWAY ADONIS
DOUBLE BAR D ADONIS 603N
BAR NONE BONNIE LASS
Sire: **BLCC MR ADONIS 30X**
PRL HOUSTON 005H
BLCC MISS HOUSTON 144U
JERICHO'S DOROTHY JANE 1D

SOUTH SEVEN RAZZMATAZZ 7R
SOUTH SEVEN TOPNOTCH 29T
SOUTH SEVEN KELTIE 2K
Dam: **SOUTHSEVEN MISS TOP 43A**
GREAT GUNS MOSES 50D
SOUTH SEVEN MISS MOSES 1N
SOUTH SEVEN BRIANA 12E

| CE | BW | WW | YW | MILK | MCE | MWWT |
|-----|-----|------|-------|------|------|------|
| 0.6 | 6.8 | 73.8 | 105.8 | 32.3 | -1.7 | 69.2 |

Here's a direct son of the old guy himself Adonis 30X. At nine years old and a number of females in the herd, we still try to breed a few females to him. I think you would want to leave every female sired by this bull. Our herd is based on the pedigree of this bull. His dam has raised four bulls in a row and have all gone through the sale. **NON-DILUTER**

SOUTHSEVEN FLASHPOINT 46F

Horned Full Fleckvieh 1249150 STU 46F Jan.22/18

13

BW: 102 \\\ ADJ WW: 826 \\\ ADJ YW: 1485

OUT OF SALE

ARNI 8M
 GREAT GUNS FERDINAND 13Z
 GREAT GUNS TONI 4U
 Sire: **SOUTH SEVEN FERDI 3D**
 CASEYS LANCE 48X
 M-RIDGE BRIANA 064B
 CASEY'S MADONNA 64Z

METRO
 ANCHOR "T" METRO 4E
 GISELA
 Dam: **SOUTH SEVEN MISS 36Y**
 SOUTH SEVEN TOPNOTCH 29T
 SOUTH SEVEN MISS 6W
 MFL FRAN 64F

| CE | BW | WW | YW | MILK | MCE | MWWT |
|-----|-----|------|-------|------|-----|------|
| 4.1 | 6.2 | 76.1 | 104.0 | 27.3 | 1.5 | 65.4 |

We brought you some genetics from the past. Metro and Ferdi. Ferdi was a bull we raised and used heavily in the mid nineties. Flashpoint carries the dark hair color of Metro and the thick wide butt of Ferdi. As you can see he likes to cover himself in straw while taking pictures. **NON-DILUTER**

SOUTHSEVEN FLASH 53F

Horned Full Fleckvieh 1249585 STU 53F Jan.24/18

14

BW: 88 \\\ ADJ WW: 773 \\\ ADJ YW: 1405

\$4,500**CURTIS RANGEN**

CHAMPS ROMANO
 VIRGINIA WALKER 97W
 VIRGINIA MS. NECKLACE 97N
 Sire: **SIBELLE DIRTY HARRY 25Z**
 PRL HOUSTON 005H
 SIBELLE GOLDA
 SIBELLE AZALEE

HEMR SAMURAI 7S
 ANCHOR D IMAX 250Y
 DORA LEE ELEXIS
 Dam: **SOUTHSEVEN MISS IMAX 2A**
 SOUTH SEVEN TOPNOTCH 29T
 SOUTH SEVEN MISS 13Y
 SOUTH SEVEN MARGRET 11M

| CE | BW | WW | YW | MILK | MCE | MWWT |
|-----|-----|------|------|------|-----|------|
| 9.4 | 1.6 | 60.7 | 84.7 | 35.4 | 5.4 | 65.8 |

We've used Dirty Harry semen for three years now and have even retained a son to use in our herd. They are consistently moderate framed, deep bodied and well balanced. Throw in Imax add's some extra calving ease into the pedigree.

SOUTHSEVEN 60F

Polled Fullblood No Reg STU 60F Jan.31/18

15

BW: 104 \\\ Sep02 WW: 840 \\\ Jan01 YW: 1444

\$8,200**PLAIN LAKE COLONY**Sire: **SIMMENTAL**

NAC UNION'S LEGACY 29L
 NICK RENEGARD 16R
 NORTHERN LIGHT MSMAGIC33J
 Dam: **BLCC MISS RENEGADE 227Z**
 PRL PORTERHOUSE REGENT
 BLCC MISS LISA 18L
 KNIGHTS JANNA 116Y

I unfortunately did not record which fullblood bull we used to AI this bulls dam. I'm not sure if that's not telling me something. Therefore he will sell without papers. We thought he was too good not to make the sale.

SOUTHSEVEN SHERIFF 22F

Homo Polled Purebred PG1248044 STU 22F Jan.11/18

16

BW: 80 \\\ ADJ WW: 732 \\\ ADJ YW: 1404

\$10,000
DOUBLE S LAND &
CATTLE



BMD RED WALKING TALL 13W
 KUNTZ MARSHALL 12Y
 TIMBER WENDY 3W
 Sire: KUNTZ SHERIFF 8A
 MUIRHEAD'S KOSMO 27N
 PEACOCK'S LI'L NETTIE 23Y
 MUIRHEAD NETTIE 5W

WHEATLAND HIGHVOLTAGE 122Y
 WHEATLAND BULL 351A
 WHEATLAND LADY 713T
 Dam: SOUTH SEVEN MISS WHEATY 72D
 3D RED POWER 150Z
 SOUTHSEVEN MISS RED 18B
 SOUTH HOLDEN MIS FREE 52U

| CE | BW | WW | YW | MILK | MCE | MWWT |
|------|------|------|-------|------|-----|------|
| 12.3 | -0.6 | 69.9 | 107.7 | 26.7 | 6.8 | 61.7 |

Sheriff is probably the most recognized red calving ease bull around. This smooth fronted bull carries all the calving ease traits.

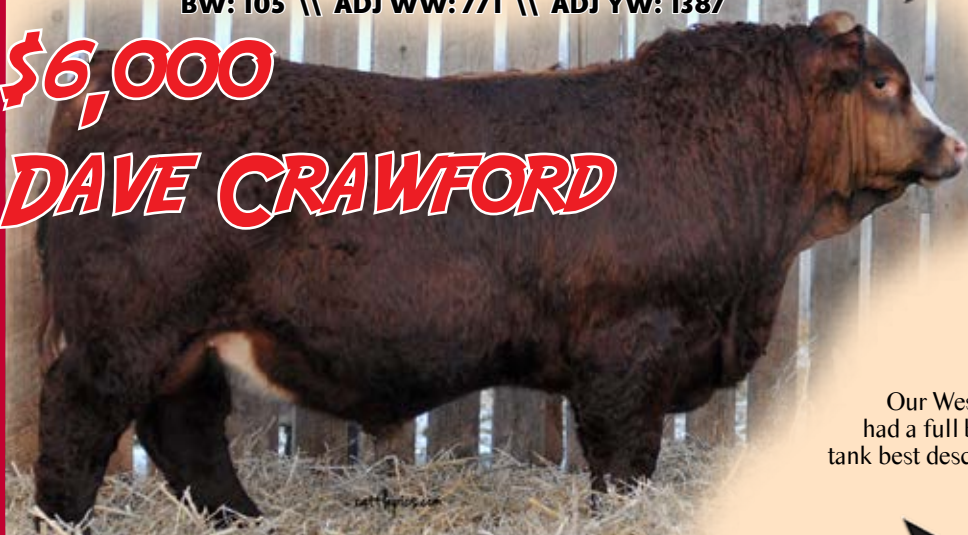
SOUTHSEVEN FIRE BALL 33F

Polled Purebred PG1249131 STU 33F Jan.15/18

17

BW: 105 \\\ ADJ WW: 771 \\\ ADJ YW: 1387

\$6,000
DAVE CRAWFORD



DCR MR MOON SHINE X102
 TNT 90 PROOF Z401
 TNT MISS S17
 Sire: WFL WESTCOTT 24C
 R PLUS REDGE 8018U
 WFL SWEET LICIOUS 1044X
 WFL RED LICIOUS

SOUTH SEVEN RAZZMATAZZ 7R
 SOUTH SEVEN TOPNOTCH 29T
 SOUTH SEVEN KELTIE 2K
 Dam: SOUTH SEVEN MISS 47W
 SOUTH SEVEN FERDI 3D
 SOUTH SEVEN JEZEBEL 4J
 SOUTH SEVEN GLAMOUR 16G

| CE | BW | WW | YW | MILK | MCE | MWWT |
|-----|-----|------|-------|------|-----|------|
| 1.5 | 6.4 | 74.7 | 107.5 | 26.0 | 1.1 | 63.4 |

Our Westcott bulls were well received last year and Fireball had a full brother sell. Blazed faced, dark red and built like a tank best describes him.

SOUTHSEVEN WESTCOTT 62F

Homo Polled Purebred PG1249591 STU 62F Feb.02/18

18

BW: 105 \\\ ADJ WW: 937 \\\ ADJ YW: 1604

\$6,000
HHC COLONY



DCR MR MOON SHINE X102
 TNT 90 PROOF Z401
 TNT MISS S17
 Sire: WFL WESTCOTT 24C
 R PLUS REDGE 8018U
 WFL SWEET LICIOUS 1044X
 WFL RED LICIOUS

BOZ REDCOAT
 ANKONIAN RED CAESAR
 GFI CANDACE G51
 Dam: SOUTH SEVEN MISS 17X
 TWIN-CHIEF NEXUS 56N
 TWIN-CHIEF REGAL 614R
 TWIN CHIEF MIZZ 604M

| CE | BW | WW | YW | MILK | MCE | MWWT |
|-----|-----|------|-------|------|-----|------|
| 1.6 | 6.8 | 97.0 | 146.4 | 21.6 | 2.0 | 70.1 |

One of the heaviest bulls both at weaning and again on January 1st. The power red bull in the pen. When you look at his birth weight you have to consider his length of body.

SOUTHSEVEN FLIPPER 68F

Homo Polled Purebred PG1249823 STU 68F Feb.03/18

19

BW: 100 \\\ ADJ WW: 711 \\\ ADJ YW: 1412

\$5,000**ALAN ARNOLD**

DCR MR MOON SHINE X102
TNT 90 PROOF Z401
TNT MISS S17
Sire: WFL WESTCOTT 24C
R PLUS REDGE 8018U
WFL SWEET LICIOUS 1044X
WFL RED LICIOUS

WHEATLAND HIGHVOLTAGE122Y
WHEATLAND BULL 351A
WHEATLAND LADY 713T
Dam: SOUTH SEVEN MISS RED 71C
SOUTH SEVEN TOPNOTCH 29T
SOUTH SEVEN MISS 81X
SOUTH SEVEN MISS DREAM 7T

| CE | BW | WW | YW | MILK | MCE | MWWT |
|-----|-----|------|-------|------|-----|------|
| 3.2 | 5.9 | 74.8 | 112.3 | 19.1 | 1.9 | 56.5 |

A stout, moderate framed bull out of a beautiful young wheaty female.

SOUTHSEVEN FLEXAGON 63F

Homo Polled Purebred PG1249617 STU 64F Feb.02/18

20

BW: 100 \\\ ADJ WW: 798 \\\ ADJ YW: 1385

\$5,000**BILL SCHMIDT**

INDIAN RIVER RING LEADER
SAJ RED EQUALIZER 7U
D BAR C RED HELGA 645S
Sire: MCINTOSH SONNY 44C
LFE RS LEWIS 327S
MISS R PLUS 8297U
MISS R PLUS 5062R

R PLUS 20X
BLI RED ADDICTION 224Z
LFE RS MISS ARNOLD 609U
Dam: SOUTHSEVEN MISS RED 99B
SOUTH SEVEN TOPNOTCH 29T
SOUTHSEVEN MISS TOP 69Z
SOUTH SEVEN LOLLIPOP 2L

| CE | BW | WW | YW | MILK | MCE | MWWT |
|-----|-----|------|------|------|------|------|
| 1.5 | 5.1 | 64.0 | 88.6 | 24.3 | -1.5 | 56.3 |

This is the first offering of Sonny calves at our sale and his calves have exceeded our expectation. Moderate birth weight, tons of hair and a good foot just like his sire.

SOUTHSEVEN BIG BANG 72F

Polled Purebred PG1249831 STU 72F Feb.06/18

21

BW: 105 \\\ ADJ WW: 872 \\\ ADJ YW: 1592

\$13,000**DAVID MOHR**

INDIAN RIVER RING LEADER
SAJ RED EQUALIZER 7U
D BAR C RED HELGA 645S
Sire: MCINTOSH SONNY 44C
LFE RS LEWIS 327S
MISS R PLUS 8297U
MISS R PLUS 5062R

SOUTH SEVEN RAZZMATAZZ 7R
SOUTH SEVEN TOPNOTCH 29T
SOUTH SEVEN Keltie 2K
Dam: SOUTH SEVEN MISS TOP 81Z
SHAWACRES JAHARI 50L
MFI MISS ROBIN GER 7072
ANCHOR "T" LANA 57H

| CE | BW | WW | YW | MILK | MCE | MWWT |
|-----|-----|------|-------|------|------|------|
| 0.3 | 6.2 | 78.9 | 118.2 | 29.5 | -2.9 | 69.0 |

This red blaze bull has caught the attention of everyone that enters the pen. I have had a few offers to buy him privately prior to the sale. Hair, muscle and performance all in one package.

SOUTHSEVEN FIREFOX 76F

Homo Polled Purebred PG1249841 STU 76F Feb.07/18

22

BW: 104 \\\ ADJ WW: 848 \\\ ADJ YW: 1467

NO SALE

INDIAN RIVER RING LEADER
SAJ RED EQUALIZER 7U
D BAR C RED HELGA 645S
Sire: MCINTOSH SONNY 44C
LFE RS LEWIS 327S
MISS R PLUS 8297U
MISS R PLUS 5062R

BOZ REDCOAT
FR REZULT
MISS FR J922
Dam: SOUTH SEVEN MISS 6X
THSF FREEDOM 300N
SOUTH HOLDEN MIS FREE 52U
SOUTHOLDEN RED

| CE | BW | WW | YW | MILK | MCE | MWWT |
|-----|-----|------|-------|------|-----|------|
| 1.1 | 5.5 | 79.3 | 118.5 | 26.8 | 1.7 | 66.5 |

This bulls dam has raised seven bulls in a row and six have made the sale. Consistently having the high performing bulls.

SOUTHSEVEN FANTOM 85F

Polled Purebred PG1249852 STU 85F Feb.17/18

23

BW: 100 \\\ ADJ WW: 934 \\\ ADJ YW: 1545

\$6,000**DARYL PAULGAARD**

INDIAN RIVER RING LEADER
SAJ RED EQUALIZER 7U
D BAR C RED HELGA 645S
Sire: MCINTOSH SONNY 44C
LFE RS LEWIS 327S
MISS R PLUS 8297U
MISS R PLUS 5062R

DOUBLE BAR D ADONIS 603N
BLCC MR ADONIS 30X
BLCC MISS HOUSTON 144U
Dam: SOUTHSEVEN MISS ADONIS51B
DOUBLE BAR D BUSTER 801L
SOUTH SEVEN MISS 7S
SOUTH SEVEN MISS MOSES 1N

| CE | BW | WW | YW | MILK | MCE | MWWT |
|-----|-----|------|-------|------|-----|------|
| 0.7 | 6.9 | 79.6 | 116.3 | 27.3 | 0.1 | 67.1 |

A bull that had one of the highest weaning weights for day of age. He showed this growth curve as a young calf.

SOUTHSEVEN FIDO 91F

Polled Purebred PG1249855 STU 91F Feb.22/18

24

BW: 97 \\\ ADJ WW: 786 \\\ ADJ YW: 1506

NO SALE

INDIAN RIVER RING LEADER
SAJ RED EQUALIZER 7U
D BAR C RED HELGA 645S
Sire: MCINTOSH SONNY 44C
LFE RS LEWIS 327S
MISS R PLUS 8297U
MISS R PLUS 5062R

SOUTH SEVEN TOPNOTCH 29T
SOUTH SEVEN XANTHUS 89X
SOUTH SEVEN JAHARI 4R
Dam: SOUTHSEVEN MISS 114A
MFI WHISTLER 47L
SOUTH SEVEN MISS 36X
SOUTH SEVEN MISS NAV 103S

| CE | BW | WW | YW | MILK | MCE | MWWT |
|------|-----|------|-------|------|------|------|
| -1.1 | 6.1 | 70.1 | 105.4 | 26.8 | -4.9 | 61.9 |

I don't think you will find a stouter bull in my pen. As a calf he showed this muscle expression and will probably be one of those easy doing bulls.

SOUTHSEVEN SONNY 96F

Purebred Polled PG1249859 STU 96F Mar.01/18

25

BW: 94 \\\ ADJ WW: 844 \\\ ADJ YW: 1450

\$4,000**CARL OGRODNIAK**

INDIAN RIVER RING LEADER
SAJ RED EQUALIZER 7U
D BAR C RED HELGA 645S
Sire: MCINTOSH SONNY 44C
LFE RS LEWIS 327S
MISS R PLUS 8297U
MISS R PLUS 5062R

DOUBLE BAR D ADONIS 603N
BLCC MR ADONIS 30X
BLCC MISS HOUSTON 144U
Dam: SOUTHSEVEN MISS ADONIS76B
SOUTH SEVEN LANCELOT 6L
SOUTH SEVEN MISS LANCE80N
SOUTH SEVEN JEZEBEL 4J

| CE | BW | WW | YW | MILK | MCE | MWWT |
|-----|-----|------|------|------|-----|------|
| 2.7 | 4.5 | 67.8 | 95.7 | 28.5 | 2.1 | 62.4 |

Just a March bull that displays the strength of the Sonny progeny. Ton's of hair, length of body and overall eye appeal.

SOUTHSEVEN FROSTY 95F

Polled Purebred PG1249858 STU 95F Mar.01/18

26

BW: 99 \\\ ADJ WW: 710 \\\ ADJ YW: 1387

NO SALE

WHEATLAND PREDATOR 922W
WHEATLAND HIGHVOLTAGE122Y
WHEATLAND LADY 736 T
Sire: WHEATLAND BULL 351A
STF MONTANA BLACK KF25
WHEATLAND LADY 713T
WHEATLAND LADY 428P

THSF FREEDOM 300N
KNK/CRSR RED BULL 53T
JDJ MISS MACHO 53P
Dam: SOUTH SEVEN MISS 28Y
MFL COPPER 83C
SOUTH SEVEN MELODY 69M
SOUTH SEVEN GLAMOUR 16G

| CE | BW | WW | YW | MILK | MCE | MWWT |
|-----|-----|------|------|------|-----|------|
| 3.8 | 2.9 | 50.5 | 75.5 | 21.3 | 1.4 | 46.6 |

Again a bull that will only be a year of age on sale day and the last Wheaty bull to sell. We have had a number of positive comments on the past Wheaty bulls that have sold through the sale.

SOUTHSEVEN POLLED POWER 14F

Polled Full Fleckvieh P1248031 STU 14F Jan.09/18

SIRE

BW: 96 \\\ ADJ WW: 848 \\\ ADJ YW: 1610



KLONDIKE GOLD RUSH 418B
ANCHOR "T" RUSTY 59G
ANCHOR "T" HELGA 10Y
Sire: STARWEST POL BLUEPRINT
CHAMPS BRAVO
PHS HOMOZYGOUS XCEPTIONAL
WCC WELLS' PLD TALULAH 7T

VIRGINIAS RED MARCIANO FF
EAGLE-RIDGE UNIVERSAL 31U
EAGLE-RIDGE SARAH 18S
Dam: SOUTH SEVEN MISS 83X
SOUTH SEVEN NAVIGATOR 33N
SOUTH SEVEN MISS NAV 99S
SOUTH SEVEN MEADOW 5M

| CE | BW | WW | YW | MILK | MCE | MWWT |
|-----|-----|------|-------|------|-----|------|
| 8.2 | 4.9 | 82.2 | 122.7 | 34.2 | 6.8 | 75.3 |

Watch for progeny from South Seven's exciting new herdsire!



RAFTER 4T FARMS

Darrell, Loralie,
Denton & Derek Tatarin
Box 122, Hairy Hill, Alberta T0B 1S0

Ph: (780) 768-2135
Darrell's Cell: (780) 632-9683

www.rafter4tfarms.com

RAFTER 4T REDEMPTION 59F

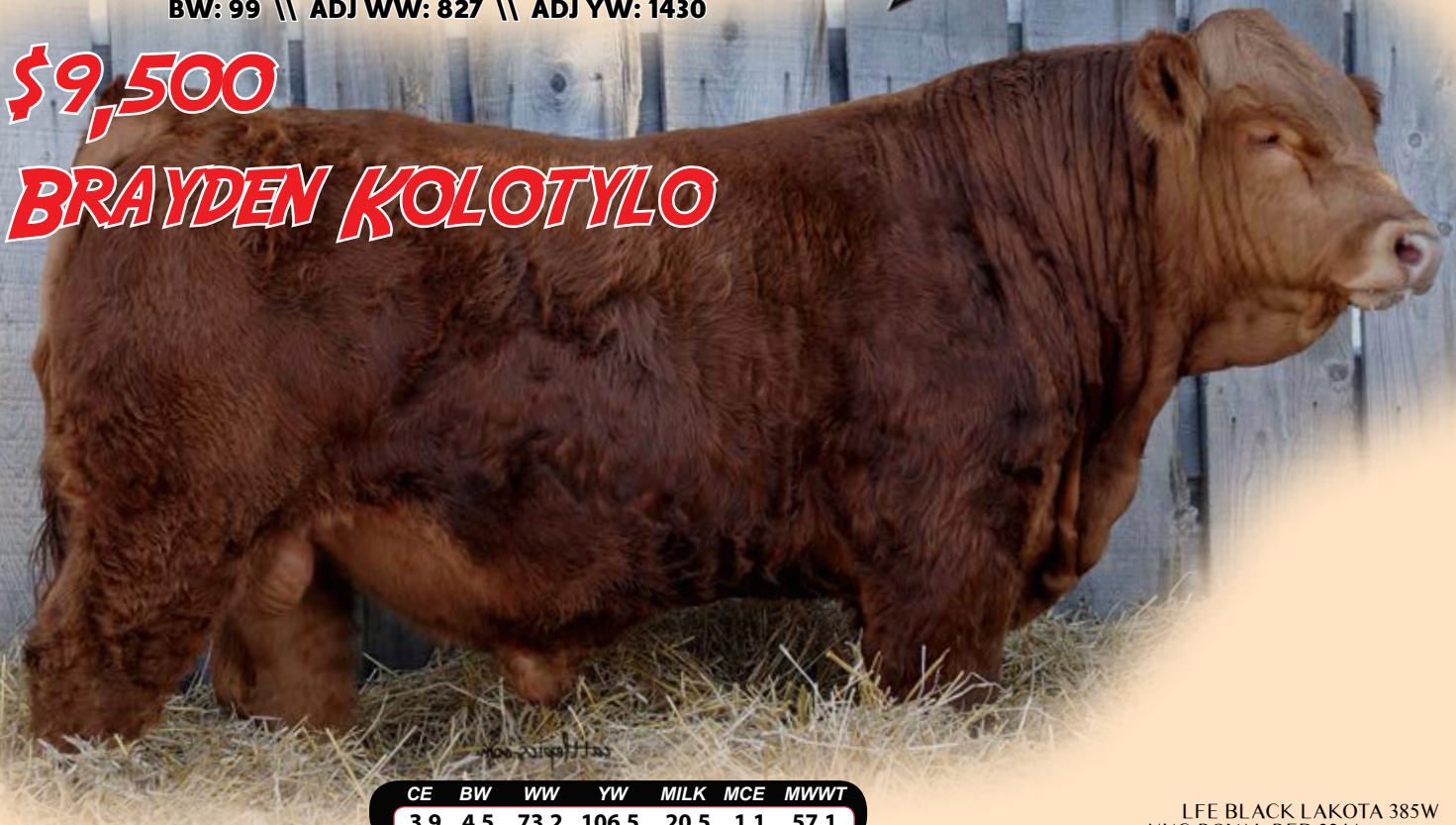
Homo Polled Purebred PG1248788 RAFT 59F Jan.19/18

BW: 99 \\\ ADJ WW: 827 \\\ ADJ YW: 1430

27

\$9,500

BRAYDEN KOLOTYLO



| CE | BW | WW | YW | MILK | MCE | MWWT |
|-----|-----|------|-------|------|-----|------|
| 3.9 | 4.5 | 73.2 | 106.5 | 20.5 | 1.1 | 57.1 |

Rafter 4T Redemption is one of the farms most accomplished breeding pieces to date. 59F is the result of Erixon War Paint, whose first calves will be sold this calendar year. War Paint goes back to one of the most elite females in the business, RF Scream 215Z, whose embryos recently sold for \$4000 a piece. This fall, we were proud to exhibit a War Paint female who went on to command \$16,000 at the great Friday Night Lights Sale. Going back to an IPU Red Galaxy dam will just enhance the maternal traits this calf has to offer. In addition to great pedigree, Redemption is structurally sound with a strong foot that carries a deep bodied, thick made, attractive frame. We were excited to exhibit Redemption this fall and were proud to win Grand Champion Simmental Bull Calf at the annual Farmfair International Show in Edmonton. 59F will sire calves that push down the scale while still maintaining that extra eye appeal. **Retaining 50 doses of semen, collection to be at buyer's convenience and seller expense. HOMO POLLED**

LFE BLACK LAKOTA 385W
NUG ROYAL RED 324A
TRIPILE C SMARTY PANTS R
Sire: **ERIXON WAR PAINT 42D**
MR HOC BROKER
RF SCREAM 215Z
RF SCREAM 39X

STF STARQUEST N114
IPU RED GALAXY 97S
RAINALTA RED LASS 13G
Dam: **ANCHOR D FLOSSIE 59X**
NLC GOOD A NUFF 33G
ANCHOR D RED ROGGIE 186S
ANCHOR-D ROGGIE 14E



Grand Champion Bull Calf Farmfair 2018



Believer- \$16,000 paternal sibling

RAFTER 4T FLASH 54F**Black Polled Purebred BPG1264313 RAFT 54F Jan.17/18****BW: 97 \\\ ADJ WW: 798 \\\ ADJ YW: 1361****28****\$5,300****GRANDISH FARMS**

CNS DREAM ON L186
SVF STEEL FORCE S701
SVF SHEZA BEAUTY L901
Sire: **FBF1 COMBUSTIBLE**
WLE BS BENCHMARK
LAZY H BURN BABY BURNR34
TRIPLE C BURN IT UP N34L

WHEATLAND RED ACE 747T
LRX RED ACE 71X
DUSTY ROSE CHAMPAGNE 1N
Dam: **RAFTER 4T ZINNIA 54Z**
GRINALTA'S POLLED REGENT
RAFTER 4T TRISTA 54T
RAFTER 4-T RHONDA 54R

| CE | BW | WW | YW | MILK | MCE | MWWT |
|-----|-----|------|-------|------|-----|------|
| 9.9 | 2.8 | 71.1 | 102.5 | 17.1 | 5.3 | 52.7 |

Flash is an extremely attractive black baldy that we are excited to market this spring. Being backed by a Red Ace female this bull is sired by FBF1 Combustible, a sire that has been highly regarded by those that have used him. This bull will sire highly attractive progeny that are well muscled and should command that extra dollar at the market. **HOMO POLLED**

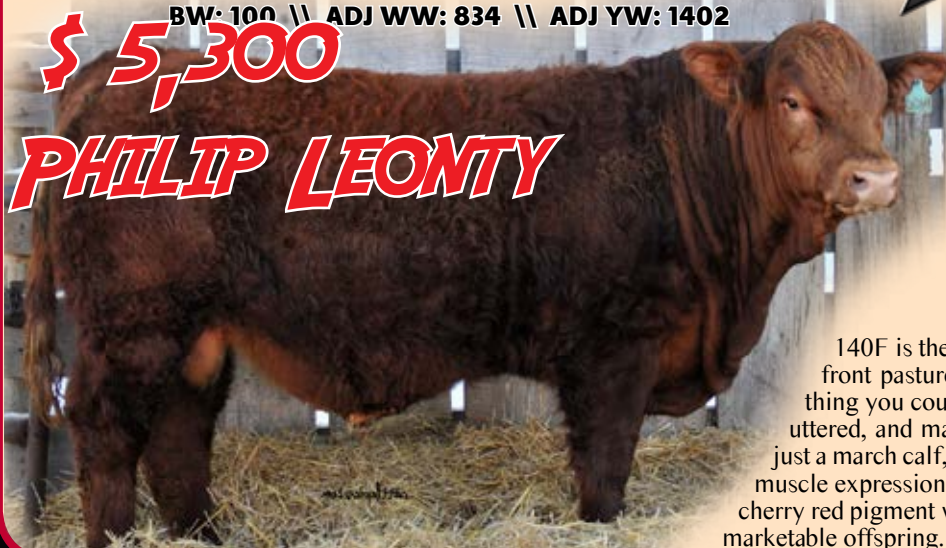
RAFTER 4T FIREBALL 22F**Polled Purebred PG1264317 RAFT 22F Jan.17/18****BW: 101 \\\ ADJ WW: 708 \\\ ADJ YW: 1353****29****\$4,500****BRAYDEN KOLOTYLO**

MUIRHEAD LIVE WIRE 95R
KOP CROSBY 137W
KOP MS BENGIE 6P
Sire: **KOP ESPOSITO 95Y**
IPU RED TOUCHDOWN 32S
KOP MS TOUCHDOWN 67U
3D MISS BLK BABE 461S

BAR 5 SA HEMISPHERE 411R
DOUBLE BAR D HEMI 183T
DOUBLE BAR D EFFIE 195R
Dam: **RAFTER 4T WISH 22W**
RU-BENS FLYER
RAFTER 4T TABITHA 22T
BLUCON RENEE

| CE | BW | WW | YW | MILK | MCE | MWWT |
|-----|-----|------|------|------|-----|------|
| 2.3 | 4.5 | 62.6 | 93.9 | 31.2 | 2.8 | 62.5 |

Fireball is another strong Esposito son that goes back to our Double Bar D Hemi bull lineage on the Dams side. This combination will give you the smooth polled head and thickness that Esposito has to offer, but also add excellent maternal traits and strong milk numbers from the fullblood pedigree on the bottom side. This is a calf that gained over 4 pounds a day from weaning to yearling, which will pay dividends in the calves he sires.

RAFTER 4T FIRECRACKER 140F**Homo Polled Purebred PG1264302 RAFT 140F Mar.10/18****BW: 100 \\\ ADJ WW: 834 \\\ ADJ YW: 1402****30****\$5,300****PHILIP LEONTY**

MUIRHEAD LIVE WIRE 95R
KOP CROSBY 137W
KOP MS BENGIE 6P
Sire: **KOP ESPOSITO 95Y**
IPU RED TOUCHDOWN 32S
KOP MS TOUCHDOWN 67U
3D MISS BLK BABE 461S

LFE BLACK LAKOTA 385W
NUG ROYAL RED 324A
TRIPIE C SMARTY PANTS R
Dam: **LRX MS RED 140C**
HARVIE JDF WALLBANGER111X
LRX MS RED 76Z
LRX MS RIBEYE 142X

| CE | BW | WW | YW | MILK | MCE | MWWT |
|-----|-----|------|------|------|-----|------|
| 3.3 | 4.1 | 68.3 | 98.6 | 26.0 | 2.8 | 60.2 |

140F is the result of our KOP Esposito herd sire and one of our front pasture females, LRX Ms. Red 140C. Ms. Red is everything you could want in a female; she is sound footed, beautifully uttered, and maintains a powerful, moderate frame. Firecracker is just a march calf, but exhibits high performance through his extensive muscle expression that carries through a long length of spine. His dark cherry red pigment with exceptional hair coat will help 140F sire highly marketable offspring. **HOMO POLLED**

RAFTER 4T FAZE 354F

Polled Purebred PG1264320 RAFT 354F Feb.02/18

31

BW: 92 \\\ ADJ WW: 721 \\\ ADJ YW: 1318

OUT OF SALE

MUIRHEAD LIVE WIRE 95R
KOP CROSBY 137W
KOP MS BENGIE 6P
Sire: KOP ESPOSITO 95Y
IPU RED TOUCHDOWN 32S
KOP MS TOUCHDOWN 67U
3D MISS BLK BABE 461S

KOP AGASSIZ 31S
RAFTER 4T INFERNO 76Y
BROCK ATTRACTION
Dam: RAFTER 4T ALICIA 354A
SS MOLSON'S SPECIAL BLEND
RAFTER 4T RHONDA 54X
RAFTER 4-T RHONDA 54R

| CE | BW | WW | YW | MILK | MCE | MWWT |
|-----|-----|------|------|------|-----|------|
| 4.2 | 3.0 | 60.1 | 84.5 | 31.7 | 5.3 | 61.8 |

Faze is a full brother to a bull we sold to Al Taylor in 2018. Similar qualities in this bull being dark red with a ton of stoutness. 354F comes with a ton of hair and will pass these qualities on to his future progeny. Faze's dam, 354A has raised a good one year after year and the trend continues here.

RAFTER FLYNN 37F

Polled Purebred PG1264316 RAFT 37F Feb.05/18

32

BW: 94 \\\ ADJ WW: 790 \\\ ADJ YW: 1393

NO SALE

MUIRHEAD LIVE WIRE 95R
KOP CROSBY 137W
KOP MS BENGIE 6P
Sire: KOP ESPOSITO 95Y
IPU RED TOUCHDOWN 32S
KOP MS TOUCHDOWN 67U
3D MISS BLK BABE 461S

CROSSROAD MILESTONE 841U
NGDB RIP TIDE 38Z
MS C&D NEVADA
Dam: RAFTER 4T BAYLEY 37B
ANCHOR "T" METRO 4E
RAFTER 4T SAHARA 37S
LAZY H NATHALIE 27N

| CE | BW | WW | YW | MILK | MCE | MWWT |
|-----|-----|------|-------|------|-----|------|
| 4.1 | 3.2 | 69.0 | 100.1 | 33.0 | 4.0 | 67.5 |

Flynn has been one of the higher performing calves and was highly regarded by visitors to the farm this summer. It is easy to see why with his dark red color and extra eye appeal. He carries a moderate frame with exceptional length of spine and exhibits that extra muscling that all Esposito sired calves, male or female, seem to possess.

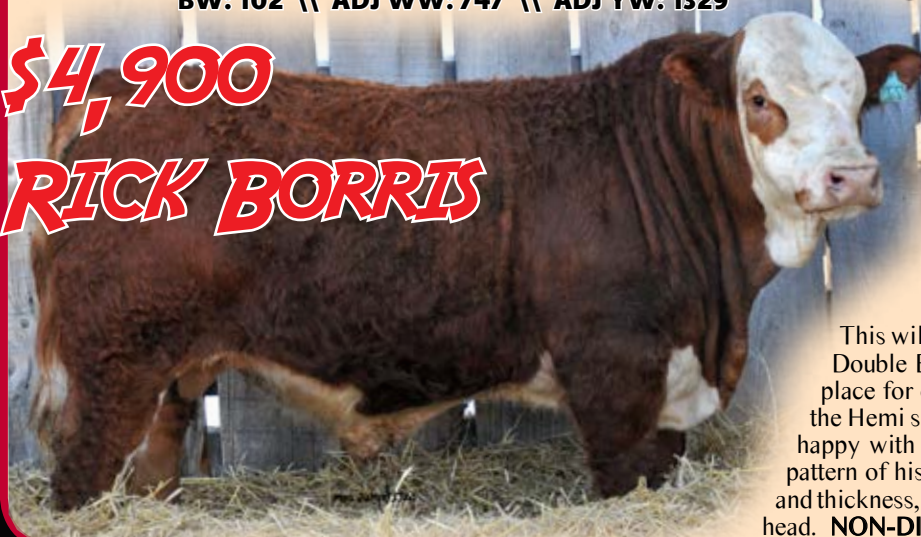
RAFTER FITCH 7F

Polled Fullfleck P1264315 RAFT 7F Jan.30/18

33

BW: 102 \\\ ADJ WW: 747 \\\ ADJ YW: 1329

\$4,900
RICK BORRIS



BAR 5 SA HERO 823M
BAR 5 SA HEMISPHERE 411R
BAR 5 SA LADY SISKIA 804L
Sire: DOUBLE BAR D HEMI 183T
DOUBLE BAR MAKE M PLLED
DOUBLE BAR D EFFIE 195R
MRLN EFFIE

GIDSCO APPOLLO 3F
SMITHBILT MOLSON 21M
JERICO'S DEIRDRE 21D
Dam: HEMR TONYA 7T
JARVIS MACTAVISH
HEMR REBECCA 35R
MRLN DULCIE

| CE | BW | WW | YW | MILK | MCE | MWWT |
|-----|-----|------|-------|------|-----|------|
| 4.7 | 4.8 | 68.3 | 103.2 | 31.4 | 0.8 | 65.6 |

This will be the last opportunity to purchase a bull of our polled Double Bar D Hemi sire. Hemi has walked the pastures at our place for over 11 years now, which just proves the longevity of the Hemi sired cattle. Many people have purchased and have been happy with his sired progeny in the past. Fitch follows the same pattern of his past paternal brothers. He is made with tons of depth and thickness, is structurally correct, and carries a nice, smooth polled head. **NON-DILUTER**

RAFTER 4T FLASHPOINT 16F**Horned Fullfleck 1264312 RAFT 16F Jan.17/18****34****BW: 100 \\\ ADJ WW: 715 \\\ ADJ YW: 1373****\$6,000****SMB FARMS**

| CE | BW | WW | YW | MILK | MCE | MWWT |
|-----|-----|------|-------|------|------|------|
| 3.6 | 4.5 | 64.8 | 100.9 | 30.9 | -1.3 | 63.3 |

BAR 5 SA HERO 823M
 BAR 5 SA HEMISPHERE 411R
 BAR 5 SA LADY SISKIA 804L
Sire: DOUBLE BAR D HEMI 183T
 DOUBLE BARD MAKE M PLLED
 DOUBLE BAR D EFFIE 195R
 MRLN EFFIE

SMITHBILT MOLSON 21M
 SS MOLSON'S SPECIAL BLEND
 MFL DINAH 65D
Dam: RAFTER 4T YORI 16Y
 DORA LEE NATIVE SON
 GIST NATIVE'S PRIDE 16P
 ANCHOR D MALIBU 62J

Possibly the most powerful fullblood in our offering, and it is not surprise it comes from our Double Bar D Hemi herdsire that has been so good for us for many years. Flashpoint is full of meat and muscle. His soundness just adds to the upside this bull could add to any program. Whether you want to add pounds to your calves or build a pen of replacement females, 16F should do the job. **NON-DILUTER**

RAFTER 4T FRONTIER 53F**Horned Fullfleck T1260547 RAFT 53F Jan.13/18****35****BW: 98 \\\ ADJ WW: 774 \\\ ADJ YW: 1347****\$ 9,750****WILCIL CYDEJKO**

| CE | BW | WW | YW | MILK | MCE | MWWT |
|-----|-----|------|-------|------|-----|------|
| 6.9 | 3.4 | 71.1 | 102.4 | 39.4 | 5.9 | 74.9 |

CHAMPS ROMANO
 VIRGINIA WALKER 97W
 VIRGINIA MS. NECKLACE 97N
Sire: SIBELLE SPARTACUS 8A
 PRL HOUSTON 005H
 BBBG FRANCESCA 2S
 IPU 4G FRANCESCA 98N

IPU BRONSON 19K
 VIRGINIA SANTIAGO 960S
 DFM JUNI 960J
Dam: BROCK UMBRA
 PORTERHOUSE KAMUS 113K
 BRK PLAY MATE
 BROCK MISS LAKEKA

Frontier is the result of a transplant mating from the great Sibelle Spartacus and Brock Umbra. Spartacus has sired many sale topping bulls and females for the Crossroad program including a \$37,000 bull in 2015, a \$30,000 bull in 2016 and a \$27,500 bull last year. The great Umbra female has been of cornerstone quality for the crossroad program; one of their lead off bulls this year carries this same mating. 53F is very stout made and big hiped, a common quality in all Spartacus sired cattle. In addition, he ranks in the top 1% for milk EPD's and is a calf we have been really excited about all the way along. Being a Fullfleck just adds to the marketability of calves Frontier will sire. The Spartacus sired cattle have been highly marketable and here is one of the limited opportunities to purchase one.

RAFTER 4T FRAZER 77F**Horned Fullfleck 1264318 RAFT 77F Feb.03/18****BW: 102 \\\ ADJ WW: 808 \\\ ADJ YW: 1371****OUT OF SALE****36**

VIRGINIA WALKER 97W
 SIBELLE SPARTACUS 8A
 BBBG FRANCHESCA 2S
 Sire: **CROSSROAD SIRIUS 78D**
 CROSSROAD SINATRA 557S
 CROSSROAD U'LITA 851U
 CROSSROAD PATIENCE 313P

HEMR SAMURAI 7S
 ANCHOR D IMAX 250Y
 DORA LEE ELEXIS
 Dam: **RAFTER 4T BRIANNA 7B**
 CROSSROAD RADIUM 789U
 RAFTER 4T BEDAZZLED 7Z
 HEMR TONYA 7T

| CE | BW | WW | YW | MILK | MCE | MWWT |
|-----|-----|------|------|------|-----|------|
| 6.6 | 4.1 | 68.9 | 92.3 | 35.0 | 5.0 | 69.5 |

Frazer is exactly what we were hoping we would get from the Sirius sired progeny when we purchased him in 2016. Sirius is the result of the Sibelle Spartacus bull who has sired numerous high selling bulls and females for the crossroad program. We really admired Sirius for his extensive length of body and his exceptional muscle expression. We believe 77F carries these traits as well being a big hiped, long made, dark red full fleck. Frazer goes back to a cornerstone Dam for us here on the farm who produced a sale high seller last year selling the Paul and Lori Kinnee. Have confidence that this mating will produce calves with extra muscling and strong maternal traits. **NON-DILUTER**

RAFTER 4T FORTUNE 81F**Horned Fullfleck 1264314 RAFT 81F Jan.11/18****BW: 102 \\\ ADJ WW: 797 \\\ ADJ YW: 1421****\$4,500****BRYDEN KOLOTYLO****37**

VIRGINIA WALKER 97W
 SIBELLE SPARTACUS 8A
 BBBG FRANCHESCA 2S
 Sire: **CROSSROAD SIRIUS 78D**
 CROSSROAD SINATRA 557S
 CROSSROAD U'LITA 851U
 CROSSROAD PATIENCE 313P

SHAWACRES JAHARI 50L
 SOUTH SEVEN ROCCO 21R
 SOUTH SEVEN GOGGLES 32G
 Dam: **SOUTH SEVEN MISS 81Y**
 MFL COPPER 83C
 SOUTH SEVEN MARSHA 50M
 SOUTH SEVEN MISS FERDI47H

| CE | BW | WW | YW | MILK | MCE | MWWT |
|-----|-----|------|-------|------|-----|------|
| 3.2 | 4.8 | 76.3 | 111.5 | 34.4 | 1.7 | 72.6 |

Fortune is our highest performing Sirius sired bull calf. 81F is a thick made, soggy, dark red double googled calf. Mothered by a high producing SouthSeven female that puts a bull in the bullpen or a female in the replacement pen year after year. Proven cow family here. **NON-DILUTER**

RAFTER 4T FELIX 402F**Horned Fullfleck 1264319 RAFT 402F Jan.26/18****BW: 97 \\\ ADJ WW: 749 \\\ ADJ YW: 1319****\$4,750****ALLAN TKACHYK****38**

VIRGINIA WALKER 97W
 SIBELLE SPARTACUS 8A
 BBBG FRANCHESCA 2S
 Sire: **CROSSROAD SIRIUS 78D**
 CROSSROAD SINATRA 557S
 CROSSROAD U'LITA 851U
 CROSSROAD PATIENCE 313P

KOP AGASSIZ 31S
 RAFTER 4T INFERNO 76Y
 BROCK ATTRACTION
 Dam: **RAFTER 4T AQUA 402A**
 SS MOLSON'S SPECIAL BLEND
 RAFTER 4T PANSY 402T
 SU PANSY 402P

| CE | BW | WW | YW | MILK | MCE | MWWT |
|-----|-----|------|------|------|-----|------|
| 4.9 | 4.0 | 68.1 | 95.6 | 33.5 | 4.5 | 67.6 |

Felix is the third Sirius calf we have on offer this fall. He carries the same qualities as his other paternal brothers, that being a dark red pigment with plenty of muscle expression. The Sirius progeny have been very consistent in their color and type and this is one we believe will go out and work. Many maternal siblings have gone through this sale from our productive 402 line.

TRIPLE K SIMMENTALS

Bernie & Georgina Klammer
Vegreville, Alberta

Ph: (780) 688-2348
Cell: (780) 603-7833

bklammer@mcsnet.ca



Directions to Farm:
From Vegreville on Secondary Highway 857
go south 10 miles to Twp. Rd. 504 then 3 miles
west to R.R. 153, we are on the corner.

TRIPLE K MR FRANK 103F

Polled Purebred PG1264562 TKS 103F Feb.12/18

BW: 89 \ \ ADJ WW: 848 \ \ ADJ YW: 1440

39

\$ 10,000
DARRYL
LAURENCESON



| CE | BW | WW | YW | MILK | MCE | MWWT |
|-----|-----|------|-------|------|-----|------|
| 4.7 | 4.4 | 78.9 | 121.8 | 29.9 | 4.7 | 69.4 |

TKS 103F is the Abiscus son that gets that most attention and is a pen favourite. Mr. Frank is just an excellent meat machine.



ZSL Mr Abiscus 29D
Sire of
lots 39, 40, 41, 43

LRX THE GODFATHER 141Z
ZSL MR RED MANDAKO 49B
ZSL MISS STEELER 104Y
Sire: ZSL MR ABISCUS 29D
KOP CROSBY 137W
ZSL MISS L.WIRE 56Y
SLE MS RED ICE 140R
KUZ MR APPOLLO 11W
NGDB DALE 8Y
MS C&D ROXY
Dam: TRIPLE K MISS 103A
NUG ROGER 48J
TRIPLE K MISS 47N
TRIPLE K MISS HERCULESGAL

TRIPLE K MR FAVORITE 44F

Polled Purebred PG1264569 TKS 44F Feb.15/18

BW: 97 \\\ ADJ WW: 847 \\\ ADJ YW: 1308

40**\$5,300****DAVE BAJEMA**

LRX THE GODFATHER 141Z
ZSL MR RED MANDAKO 49B
ZSL MISS STEELER 104Y
Sire: ZSL MR ABISCUS 29D
KOP CROSBY 137W
ZSL MISS L.WIRE 56Y
SLE MS RED ICE 140R

DASR 5R
JSEE MR YAHOO
CAMP REESE 47R
Dam: TRIPLE K MISS 4A
ZSL MR YOUKON 51T
TRIPLE K MISS 4X
TRIPLE-K MISS PERFECT ONE

| CE | BW | WW | YW | MILK | MCE | MWWT |
|-----|-----|------|-------|------|-----|------|
| 2.7 | 4.9 | 72.0 | 109.0 | 30.0 | 3.3 | 66.0 |

Mr Favorite 44F has a lot of qualities that make him stand out: thickness, depth, length and a great haircut.

TRIPLE K MR FINCH 54F

Polled Purebred PG1264570 TKS 54F Feb.06/18

BW: 91 \\\ ADJ WW: 827 \\\ ADJ YW: 1393

41**\$6,500****BRIAN & KEVIN
LITWIN**

LRX THE GODFATHER 141Z
ZSL MR RED MANDAKO 49B
ZSL MISS STEELER 104Y
Sire: ZSL MR ABISCUS 29D
KOP CROSBY 137W
ZSL MISS L.WIRE 56Y
SLE MS RED ICE 140R

NCB RED SUSPECT 30S
KHG ELCTRIC RED 105U
KHG NANCY 7P
Dam: ZSL MISS ELECTRIC 154A
TEMPLEHALL RED ICE 15N
ZSL MS RED ICE 66R
ZSL MS REMB 28J

| CE | BW | WW | YW | MILK | MCE | MWWT |
|-----|-----|------|-------|------|-----|------|
| 5.1 | 3.7 | 72.7 | 117.4 | 29.0 | 3.0 | 65.4 |

TKS 54F is a bull with style and eye appeal. He is a thick chunk of beef with a very moderate birth weight that translates to calving ease.

TRIPLE K MR FRANKCO 58F

Polled Purebred PG1264559 TKS 58F Jan.26/18

BW: 94 \\\ ADJ WW: 768 \\\ ADJ YW: 1213

42**OUT OF SALE**

WHEATLAND BULL 680S
WHEATLAND BULL 15X
WHEATLAND LADY 515R
Sire: PWK BULL 6T 50B
TNT DYNAMITE BLACK L137
PWK MS DYNAMITE 8N 6T
ASP MS B-B 8N

KUZ MR APPOLLO 11W
NGDB DALE 8Y
MS C&D ROXY
Dam: TRIPLE K MISS 58B
MAPPIN'S RED CINCH 161M
TRIPLE K MISS TILLY 58 T
MS BGS KISS 56K

| CE | BW | WW | YW | MILK | MCE | MWWT |
|-----|-----|------|------|------|-----|------|
| 4.3 | 4.7 | 60.1 | 83.6 | 24.1 | 2.9 | 54.2 |

A red baldie face meat machine from our favourite cow family. Homo polled probably as well.

TRIPLE K MR FREDDY 4F

Polled Purebred PG1264565 TKS 4F Jan.20/18

43

BW: 90 \ \ ADJ WW: 775 \ \ ADJ YW: 1268

\$5,000**SHELDON HAUCA**

LRX THE GODFATHER 141Z
ZSL MR RED MANDAKO 49B
ZSL MISS STEELER 104Y
Sire: ZSL MR ABISCUS 29D
KOP CROSBY 137W
ZSL MISS L.WIRE 56Y
SLE MS RED ICE 140R

VIRGINIAS RED MARCIANO FF
ZSL MR YOUKON 51T
SLE MISS RUSTY ROSE 42N
Dam: TRIPLE K MISS 4X
MAPPIN'S RED CINCH 161M
TRIPLE-K MISS PERFECT ONE
TRIPLE-K MISS DESIGNER4G

| CE | BW | WW | YW | MILK | MCE | MWWT |
|-----|-----|------|-------|------|-----|------|
| 3.4 | 4.2 | 72.0 | 109.0 | 26.4 | 3.2 | 62.4 |

Mr Freddy is another baldie face meat machine from our favourite cow family. Homo polled probably as well.

TRIPLE K MR FANITASTIC 88F

Horned Fullblood 1264561 TKS 88F Jan.21/18

44

BW: 93 \ \ ADJ WW: 796 \ \ ADJ YW: 1306

\$4,500**KARVONEN LAND & CATTLE**

SHAWACRES JAHARI 50L
DESS SAHARA 73S
MS DD&E FAIRY TALE 43F
Sire: WESTGOLD WYATT 113Z
MFI SUPREME 4037
RENDEZVOUS 443T
SU RUSTI 542R

DASR 5R
JSEE MR YAHOO
CAMP REESE 47R
Dam: TRIPLE K MISS 88C
ZSL MR YOUKON 51T
TRIPLE K MISS 188X
TRIPLE K MISS 49T

| CE | BW | WW | YW | MILK | MCE | MWWT |
|-----|-----|------|-------|------|-----|------|
| 4.5 | 5.5 | 69.7 | 106.0 | 32.7 | 3.9 | 67.6 |

A dark red fullblood bull with great qualities, thick, long and full of muscle. His sisters are great replacements.

TRIPLE K MR FLINT 32F

Horned Purebred G1264566 TKS 32F Feb.03/18

45

BW: 98 \ \ ADJ WW: 783 \ \ ADJ YW: 1314

\$5,000**DAVE BAJEMA**

SHAWACRES JAHARI 50L
DESS SAHARA 73S
MS DD&E FAIRY TALE 43F
Sire: WESTGOLD WYATT 113Z
MFI SUPREME 4037
RENDEZVOUS 443T
SU RUSTI 542R

SGA 20U UNBELIEVABLE
WESTGOLD HEADLINER 140X
MYRN JASMIN 77R
Dam: TRIPLE K MISS 32Z
NUG ROGER 48J
TRIPLE K MISS LIKEABLE 2L
MISS ATER 21X

| CE | BW | WW | YW | MILK | MCE | MWWT |
|-----|-----|------|-------|------|------|------|
| 2.7 | 6.3 | 74.0 | 115.6 | 25.5 | -1.8 | 62.5 |

TKS 32F is a bull that will have many many friends, he is just plain good.

TRIPLE K MR FRED 52F

Horned Fullblood 1264567 TKS 52F Feb.16/18

BW: 96 \\\ ADJ WW: 801 \\\ ADJ YW: 1257

46**\$6,250****TERRY ELANIAK**

SHAWACRES JAHARI 50L
DESS SAHARA 73S
MS DD&E FAIRY TALE 43F
Sire: **WESTGOLD WYATT 113Z**
MFI SUPREME 4037
RENDEZVOUS 443T
SU RUSTI 542R

KUZ MR APPOLLO 11W
NGDB DALE 8Y
MS C&D ROXY
Dam: **TRIPLE K MISS 52A**
BLUCON NEFF'S GOLDMINER
SOUTH HOLDEN 52S
GREAT GUNS CLARISSE 62F

| CE | BW | WW | YW | MILK | MCE | MWWT |
|-----|-----|------|------|------|-----|------|
| 5.3 | 5.4 | 60.7 | 84.9 | 29.1 | 3.0 | 59.5 |

Fullblood 52F is a son from a great cow. This young fellow will sire those calves that will make you money.

TRIPLE K MR FIELD 79F

Horned Purebred G1264563 TKS 79F Feb.06/18

BW: 97 \\\ ADJ WW: 843 \\\ ADJ YW: 1347

47**OUT OF SALE**

SHAWACRES JAHARI 50L
DESS SAHARA 73S
MS DD&E FAIRY TALE 43F
Sire: **WESTGOLD WYATT 113Z**
MFI SUPREME 4037
RENDEZVOUS 443T
SU RUSTI 542R

DASR 5R
JSEE MR YAHOO
CAMP REESE 47R
Dam: **TRIPLE K MISS 79A**
SHAWACRES NOEL 44N
TRIPLE K MISS TIKI 79 T
TRIPLE K MISS MELODY 47M

| CE | BW | WW | YW | MILK | MCE | MWWT |
|-----|-----|------|-------|------|-----|------|
| 3.7 | 6.2 | 75.5 | 116.3 | 33.1 | 3.3 | 70.9 |

This fellow is a typical Wyatt son; they come complete colour, thickness and performance. Wyatt makes great bull calves and heifers are excellent mother cows.

TRIPLE K MR FRANCIS 83F

Horned Fullblood 1264558 TKS 83F Feb.05/18

BW: 93 \\\ ADJ WW: 767 \\\ ADJ YW: 1292

48**\$5,000****HORVAT FARMS**

SHAWACRES JAHARI 50L
DESS SAHARA 73S
MS DD&E FAIRY TALE 43F
Sire: **WESTGOLD WYATT 113Z**
MFI SUPREME 4037
RENDEZVOUS 443T
SU RUSTI 542R

VIRGINIAS TALLAHASSEE
BEECH BROS X MAN 918X
EAGLE-RIDGE RACHELLE 2R
Dam: **WOLFEA ANN FF 80A**
WOLFES FF ULTIMATE 823U
WOLFES MOLLY FF84Y
CHAPPELL CREEK MELISSA FF

| CE | BW | WW | YW | MILK | MCE | MWWT |
|-----|-----|------|------|------|-----|------|
| 8.0 | 4.2 | 63.4 | 95.8 | 31.0 | 3.9 | 62.7 |

Mr. Francis TKS 83F receives lots of attention being a fullblood with eye appear performance. His full brother was our high seller two years ago and is being used on black Angus cows. Don't miss out!



FORE SEE CATTLE CO.

Rod Chizawsky &
Sandi Berezan

All bulls given their
first shot of foot rot
vaccine fusogard.

Rod's Cell: 780-632-5500
Sandi's Cell: 587-280-9394
sandr@foreseecattle.co

Directions to farm: From Vegreville, north on 857 to 631 junction,
east to RR142, north to Twnshp 532, west 1/16th of a mile.

FSCC MR FIDDLER 1F

Homo Polled Purebred UNR1226268 FSCC 1F Jan.01/18

49

BW: 92 \\\ ADJ WW: 715 \\\ ADJ YW: 1403

OUT OF SALE



| CE | BW | WW | YW | MILK | MCE | MWWT |
|-----|-----|------|-------|------|-----|------|
| 3.6 | 4.4 | 93.2 | 143.3 | 21.5 | 4.6 | 68.1 |

A powerful Riddler x Ramona son who had that herdbull look at one week of age. These genetics need no introduction to the simmental industry. We would like to draw semen for in herd use at buyers convenience and our expense. **HOMO POLLED**

LFE THE DARK NIGHT 350U
LFE GOTHAM 819Y
LFE BEST LADY 47W
Sire: LFE THE RIDDLER 323B
TNT TANKER U263
LFE BS CHARO 23Y
LFE CHARO 3N

RW BOMBER 8H
TNT DYNAMITE BLACK L137
OPPS WIS GM2
Dam: CROSSROAD RAMONA 375R
LFE MR LEWIS 305J
LFE RED CADILACE 168M
LFE RED CADILAC 106H



LFE the Riddler 323B
sire of lot 49



Crossroad Ramona 375R
dam of lot 49

FORESEE MR FELIX 41F**Homo Polled Purebred BPG1259380 FSCC 41F Jan.25/18****50****BW: 94 \\\ ADJ WW: 695 \\\ ADJ YW: 1362****\$7,500****GRANDISH FARMS**

| CE | BW | WW | YW | MILK | MCE | MWWT |
|-----|-----|------|-------|------|-----|------|
| 5.7 | 4.5 | 80.1 | 112.7 | 18.5 | 3.3 | 58.6 |

FSCC 41f is a real chunk, wide topped, deep rib, good hair, a small head with a low birth weight. The kind that will rise steers to push the scale down. **HOMO POLLED**

HART ALL IN W382
 SPRINGCREEK ALL IN 155Y
 SPRINGCREEK BLK TESS 73T
 Sire: **SPRINGCREEK OLYMPIAN 66A**
 RCC/TCF LINE DRIVE M181
 SPRINGCREEK LINNE 33R
 SPRINGCREEK JOSIE 58N

SVF STEEL FORCE S701
 MR HOC BROKER
 JM BF H25
 Dam: **FORESEE BOSSIE 4A**
 CNS DREAM ON L186
 HSN DREAM ON 4Y
 WAR NAOMI 13N



*Spring Creek Olympian 66A
 Sire of lot 50*

FSCC MR FESTUS 23F**Homo Polled Purebred BPG1259346 FSCC 23F Jan.14/18****51****BW: 80 \\\ ADJ WW: 619 \\\ ADJ YW: 1249****\$7,000****TORI PONICH**

| CE | BW | WW | YW | MILK | MCE | MWWT |
|-----|-----|------|-------|------|-----|------|
| 6.3 | 2.7 | 69.8 | 105.8 | 20.6 | 3.5 | 55.4 |

A black Royal Red son out of our 822Z cow (Sandi's pet) that has a nice udder and always produces a keeper. Her female offsprings purchased by Circle 7 and WJ Simmentals. Also we have retained a couple females in our own herd. **HOMO POLLED**

R PLUS BLACKEDGE
 LFE BLACK LAKOTA 385W
 KJLI RAZZLE DAZZLE 628R
 Sire: **NUG ROYAL RED 324A**
 TRIPLEC EL PODEROSO REY
 TRIPLE C SMARTY PANTS R
 GFI GRAMMS DELIGHT L17

TNT TOP CUT P274
 MECK WIRELESS 24W
 MECK QUEENIE 336N
 Dam: **FORESEE ZENOVIA 822Z**
 WS EXPRESSWAY S34
 D BAR C BLK SATIN 822U
 D BAR C BLK SATIN 50R



*NUG Royal Red 324A
 Sire of lot 51*

FORESEE MR FRANKIE 17F

Homo Polled Purebred PG1227701 FSCC 17F Jan.09/18

52

BW: 82 \\\ ADJ WW: 638 \\\ ADJ YW: 1260

\$7,100
MARK WEISS

BMD RED WALKING TALL 13W
KUNTZ MARSHALL 12Y
TIMBER WENDY 3W
Sire: KUNTZ SHERIFF 8A
MUIRHEAD'S KOSMO 27N
PEACOCK'S LI'L NETTIE 23Y
MUIRHEAD NETTIE 5W

R PLUS RELOAD 2006Z
WFL MR WESTWAY 7B
WFL BLACK NELL 1062X
Dam: NUG DELORES 666D
IPU RED BARON 11T
MECK SWEETHEART 951W
MECK CROCUS 167L

| CE | BW | WW | YW | MILK | MCE | MWWT |
|------|-----|------|-------|------|-----|------|
| 13.8 | 0.0 | 67.0 | 100.3 | 25.6 | 7.1 | 59.1 |

Here is a direct sheriff son who was designed for the heifer pen, homo polled with a small head, smooth shoulder and long body. **HOMO POLLED**



Kuntz Sheriff
sire of
lot 52

FSCC MR FLASH 10F

Homo Polled Purebred UNR1226671 FSCC 10F Jan.05/18

53

BW: 80 \\\ ADJ WW: 646 \\\ ADJ YW: 1305

\$7,750
BILL SCHMIDT

KUNTZ MARSHALL 12Y
KUNTZ SHERIFF 8A
PEACOCK'S LI'L NETTIE 23Y
Sire: FSCC DJANGO 14D
IPU 52N ACCELERATOR 222U
NUG MOLLY 411B
NUG MISS 12X

MR NLC UPGRADE U8676
MR CCF VISION
GCF MISS ELSA
Dam: FORESEE MISS DANA 12D
SVS CAPTAIN MORGAN 11Z
NUG ASHLEY 423B
NUG CHARM 496P

| CE | BW | WW | YW | MILK | MCE | MWWT |
|------|------|------|-------|------|-----|------|
| 12.9 | -0.1 | 77.2 | 118.4 | 23.9 | 7.4 | 62.5 |

A homo polled sheriff grandson who has awesome calving ease numbers. If you're in need of a heifer bull, here is one of the three we have to offer this year. **HOMO POLLED**



FSCC Django 14D
sire of
lots 53 & 54

FSCC MR FARGO 27F

Homo Polled UNR1259350 FSCC 27F Jan.15/18

54

BW: 77 \\\ ADJ WW: 659 \\\ ADJ YW: 1251

\$ 6,100
GRANDISH FARMS

KUNTZ MARSHALL 12Y
KUNTZ SHERIFF 8A
PEACOCK'S LI'L NETTIE 23Y
Sire: FSCC DJANGO 14D
IPU 52N ACCELERATOR 222U
NUG MOLLY 411B
NUG MISS 12X

WHEATLAND PREDATOR 922W
MRL 77Z
MRL MISS 590P
Dam: FORESEE MISS DAISY 34D
SKORS AFTERSHOCK 161X
MOES BLACKTOP SHOCK 341Z
MOES BLACKTOP 1340W

| CE | BW | WW | YW | MILK | MCE | MWWT |
|------|------|------|-------|------|-----|------|
| 11.3 | -0.2 | 69.8 | 106.8 | 26.5 | 6.1 | 61.4 |

Our third heifer bull on offer out of a Sheriff son that was our high seller in 2017 bullfest sale, that was purchased by Derald Chmilar. We used him on a bunch of heifers and are glad we did. These sheriffs are the sleep easy maintenance free type people are asking for. **HOMO POLLED**

FORESEE MR FANTOM 15F**Homo Polled Purebred PG1227699 FSCC 15F Jan.08/18****55****BW: 102 \\\ Aug30 WW: 788 \\\ ADJ WW: 703
Jan09 YW: 1336 \\\ ADJ YW: 1367****\$6,750****ROBERT HENNING**

| CE | BW | WW | YW | MILK | MCE | MWWT |
|-----|-----|------|-------|------|-----|------|
| 3.2 | 5.9 | 87.3 | 130.0 | 27.7 | 3.0 | 71.4 |

This red whiskey son is a real deep, soggy performance bull. Red whiskey is made his mark in the simmental breed and the dam is broody, good uddered, with a good temperment, and always raises a good one. **HOMO POLLED**

DCR MR MOON SHINE X102
TNT BOOTLEGGER Z268
TNT MISS W70
Sire: MRL RED WHISKEY 101B
KOP CROSBY 137W
MRL MISS 677Y
MRL MISS 355T

REMINGTON RED LABEL HR
MRL ALL IN 100S
MRL MISS 511N
Dam: JAYSHAW YANA 159Y
BLSF MR NITRO
BLSF 159U
BLSF MISS NISSY



*Red Whiskey 101B
Sire of lot 55*

FSCC MR FARLEY 67F**Homo Polled Purebred PG1258761 FSCC 67F Feb.16/18****56****BW: 98 \\\ Aug30 WW: 664 \\\ ADJ WW: 693
Jan09 YW: 1235 \\\ ADJ YW: 1386****\$7,000****RUDOLF RESOURCES**

| CE | BW | WW | YW | MILK | MCE | MWWT |
|-----|-----|------|-------|------|-----|------|
| 4.8 | 3.1 | 73.6 | 112.5 | 22.6 | 2.2 | 59.4 |

If you want to build females into your herd, this bull is for you. He is packed with the likes of red force, addiction, temptation and the list goes on. He will give you growth along with beautiful udders and great temperament, also not to mention a great set of steer calves. **HOMO POLLED**

R PLUS 20X
BLI RED ADDICTION 224Z
LFE RS MISS ARNOLD 609U
Sire: JSEE MR COMMANDER 8C
KIMLAKE TEMPTATION 1R
NUG MISS 292T
NUG JESSE 480P

HOOKS SHEAR FORCE 38K
MRL RED FORCE 12U
MRL MISS 824S
Dam: LWC MISS RED FORCE 298Y
LAZY S RED 254L
LWC MISS RED 175P
LWC MISS ARNIE 186J



*JSEE 8C Commander
Sire of lot 56*



JAYSHAW SIMMENTALS

Jason, Shawna, Ethan & Eboni Bast
Box 49 - Lavoy, Alberta - T0B 2S0

Jason's Cell: (780) 603-0676
Shawna's Cell: (587) 280-0956
jseebast@gmail.com

JSEE MR FABIO 9F

Homo Polled Homo Blk Purebred BPG1253024 JSEE 9E Jan.03/18

BW: 94 \\\ ADJ WW: 787 \\\ ADJ YW: 1534

\$6,500
CACTUS LAKE



| CE | BW | WW | YW | MILK | MCE | MWWT |
|------|-----|------|-------|------|-----|------|
| 10.3 | 2.6 | 81.9 | 126.0 | 21.7 | 7.5 | 62.7 |

A stout Allegiance calf that will add some chrome and growth to his offspring. Above avg EPD's and a definite pen favorite, his Captain Morgan has been a steady producer, with a son going to the Goodbrand's last year, and was one of our high sellers. 9F is a definite sale feature and a bull we are very proud to offer. **HOMO POLLED HOMO BLACK**

ELLINGSON LEGACY M229
MR NLC UPGRADE U8676
MS NLC MOJO S6119 B
Sire: **SVF ALLEGIANCE Y802**
CIRCLET ANTOINETTES STAR
DOUBLE R MISS 29G T18
SAC MISS JET TOP 29G

HARVIE JDF WALLBANGER111X
SVS CAPTAIN MORGAN 11Z
SUNNYVALLEY BLK JENNA 88U
Dam: **NUG BRENDA 474B**
TNT TANKER U263
IPU MS. TANKER 72Y
IPU MS RANCH HAND 122U

JSEE MR FATS DOMINO 15F

Homo Polled Purebred PG1253021 JSEE 15F Jan.08/18

BW: 98 \\\ ADJ WW: 850 \\\ ADJ YW: 1596

\$10,500
CAMPBELL LAKE
FARMS



KOP CROSBY 137W
SPRINGCREEK LOTTO 52Y
SPRINGCREEK BLK TESS 25T
Sire: **JAYSHAW MR LOTTO 33D \ CC-RED**
WLB OBSIDIAN BLACK 391Y
DOUBLE BAR D MISSY 414A
DOUBLE BAR D MISSY 659Y

REMINGTON RED LABEL HR
MRL ALL IN 100S
MRL MISS 511N
Dam: **JAYSHAW ZANITA**
SHAWACRES RANGER 38R
VIRGINIA MS POLL TINA
EAGLE-RIDGE 9F

| CE | BW | WW | YW | MILK | MCE | MWWT |
|-----|-----|------|-------|------|-----|------|
| 5.2 | 4.1 | 74.1 | 108.5 | 25.9 | 4.3 | 63.0 |

A bull that weaned off his mom at whooping 1070, and was well over 1500 at yearling weigh in, a definite power bull, with tons of hair and plenty of testicle, guts and length. A bull that will increase weaning weights on your calves and leave you with some impressive females. **HOMO POLLED**

JSEE MR ALL IN 3F

Homo Polled Purebred BPG1255901 JSEE 3F Jan.01/18

59

BW: 82 \\\ ADJ WW: 808 \\\ ADJ YW: 1445

OUT OF SALE

SVF/NJC MO TOWN M216
JS SURE BET 4T
JS BLACK MAGIC WOMAN 13P
Sire: **GSC ALL IN 72A**
WAGR DREAM CATCHER 03R
MISS WERNING KP 8543U
MISS WERNING 534R

LFE BS LEWIS 322U
CROSSROAD WARDEN 36Z
MADER PLD REDKAT 17N
Dam: **ZSL MISS WARDEN 24D**
TEMPLEHALL RED ICE 15N
ZSL MISS RED ICE 107S
EDN TANGLES 82F

| CE | BW | WW | YW | MILK | MCE | MWWT |
|-----|-----|------|------|------|-----|------|
| 9.8 | 1.4 | 60.5 | 86.6 | 23.8 | 5.0 | 54.1 |

The ALL IN semen has almost become impossible to get, we used him on some heifers and they all calved extremely well. We believe 3F should follow in his sire's foot steps and calf easy enough and still have some substance at the end of the day. A bull we feel has huge potential to work well on heifers. We would like to use 3F in our own program and would like to retain some semen for on farm use. **HOMO POLLED**

JSEE MR FRITZ 2F

Polled Purebred PG1252945 JSEE 2F Jan.01/18

60

BW: 88 \\\ ADJ WW: 792 \\\ ADJ YW: 1514

\$10,000
MGB SIMMENTALS



R PLUS REDGE 8018U
R PLUS 20X
MISS R PLUS 6082S
BLI RED ADDICTION 224Z
LFE DREAMING RED 503S
LFE RS MISS ARNOLD 609U
MISS ARNOLD L2539

TCF/RCC TEMPTATION GJ640
KIMLAKE TEMPTATION 1R
KIMLAKE REBECCA 1107N
Dam: **NUG MISS 292T**
NCB RIGHT NOW 14L
NUG JESSE 480P
NUG MISS 145L

| CE | BW | WW | YW | MILK | MCE | MWWT |
|------|-----|------|------|------|-----|------|
| 10.0 | 1.0 | 61.8 | 92.9 | 25.0 | 5.0 | 55.9 |

A natural son out of our old 292T cow, every calf has been registered to this cow except one which died at birth. Romaniuks, Canan Farms, Clem + Mira Sandan, Fore See Cattle and David Mohr all have sons working in their herds. A proven cow, buy with confidence.

JSEE MR FINCH 22F

Homo Polled Purebred BPG1253020 JSEE 22F Jan.12/18

61

BW: 100 \\\ ADJ WW: 789 \\\ ADJ YW: 1618

\$6,500
EDDLESTON FARMING



Red Addiction
sire of
lots 60 to 62

R PLUS REDGE 8018U
R PLUS 20X
MISS R PLUS 6082S
BLI RED ADDICTION 224Z
LFE DREAMING RED 503S
LFE RS MISS ARNOLD 609U
MISS ARNOLD L2539

WHEATLAND BULL 131L
WHEATLAND BULL 680S
WHEATLAND LADY 351N
Dam: **SRH DEB 8C**
WS RED DREAM S49
D BAR C DEB 837U
D BAR C DEB 422P

| CE | BW | WW | YW | MILK | MCE | MWWT |
|-----|-----|------|-------|------|-----|------|
| 6.6 | 3.4 | 68.1 | 107.8 | 21.2 | 1.5 | 55.3 |

Another son out of Red Addiction224Z our walking herdsire that we can't say enough good things about. 22F is a deep bodied, heavy haired, smooth moving bull, a bull that is an easy eye catcher. **HOMO POLLED**

JSEE MR FABIAN 18F

Homo Polled Purebred PG1253017 JSEE 18F Jan.08/18

62

BW: 91 \\\ ADJ WW: 782 \\\ ADJ YW: 1460

\$5,500**ORFINO FARMS**

R PLUS REDGE 8018U
R PLUS 20X
MISS R PLUS 6082S
BLI RED ADDICTION 224Z
LFE DREAMING RED 503S
LFE RS MISS ARNOLD 609U
MISS ARNOLD L2539

REMINGTON RED LABEL HR
MRL ALL IN 100S
MRL MISS 511N
Dam: JAYSHAW MS 41B
SHAWACRES NOEL 44N
TRIPLE K MISS 88U
TRIPLE-K MISS PERFECT 8P

| CE | BW | WW | YW | MILK | MCE | MWWT |
|-----|-----|------|------|------|-----|------|
| 6.5 | 2.5 | 61.3 | 86.7 | 23.9 | 2.8 | 54.6 |

A dark red Addiction son that is structurally built right, plenty of volume with a great disposition, which is typical of the addiction offspring.
HOMO POLLED



Red Addiction
sire of
lots 60 to 62

JSEE MR LENNY 48F

Horned Purebred G1263289 JSEE 48F Feb.05/18

63

BW: 101 \\\ ADJ WW: 829 \\\ ADJ YW: 1635

\$8,250**HHC COLONY**

NUG RANGER 168R
NUG RAMADA 319X
RENDEZVOUS 9N
Sire: LFE HILTON 519A
LRX JUSTICE 33U
LFE FS EMMA 11X
LFE FS EMMA 80T

MFI WHISTLER 47L
LRX JUSTICE 33U
LRX MS 81L
Dam: SBV STEPHANIE 647Z
NUG FRONTLINE 11N
NUG STEPHANIE 654S
NUG GILL 521K

| CE | BW | WW | YW | MILK | MCE | MWWT |
|-----|-----|------|-------|------|-----|------|
| 4.3 | 5.1 | 70.9 | 111.6 | 33.2 | 6.6 | 68.7 |

A fancy Hilton calf, his mother came from the great Fullblood herd of Mark Land Cattle. A powerful bull with all the right characteristics to make a great herdsire. Holt colony bought a son out of this same cow a few years back from Leonard.

JSEE MR FLASH 47F

Horned Fullblood 1253016 JSEE 47F Feb.04/18

64

BW: 98 \\\ ADJ WW: 894 \\\ ADJ YW: 1635

\$9,250**VEGREVILLE COLONY**

BAR 5 SA HEMISPHERE 411R
DOUBLE BAR D HEMI 183T
DOUBLE BAR D EFFIE 195R
Sire: RAFTER 4T NO LIMIT 28A
ZSL MR GURERRO 49N
4L MS GURERRO 28U
KIMLAKE CHARM 482P

SOUTH SEVEN TOPNOTCH 29T
SOUTH SEVEN XANTHUS 89X
SOUTH SEVEN JAHARI 4R
Dam: JAYSHAW CHLOE
SHAWACRES KANE 15K
M&S MS SHAW 28S
M&S MISS ARNIE 19N

| CE | BW | WW | YW | MILK | MCE | MWWT |
|-----|-----|------|-------|------|------|------|
| 2.0 | 5.8 | 78.9 | 116.7 | 30.3 | -1.9 | 69.8 |

We don't sell many fullblood bulls but we think 47F is a good one, a real meat machine with plenty of performance and a good set of EPD's.

TERMS AND CONDITIONS

Terms - The terms of the sale are cash or cheque payable at par at sale location unless satisfactory credit arrangements have been made previous to the sale. The right of property shall not pass until after settlement is made. Should any purchaser fail to settle for his purchase, the consignor, reserves full power to resell the animal to the best advantage, either publicly or privately, without further notice. Any loss arising from such resale together with keep and all other expenses shall be payable by the defaulter. All settlements must be made with the clerks of the sale before any cattle will be released.

Disputes - In case of disputes, bidding will be re-opened between the parties involved. If no further bid is made, the buyer will be the person from whom the auctioneer accepted the last bid. The auctioneer's decision in such matters will be final.

Purchaser's Risk - Each animal becomes the risk of the purchaser as soon as sold. Animals will be cared for at the purchaser's risk for a reasonable length of time.

Announcements - Announcements from the auction block will take precedence over the printed matter in the catalogue. Buyers are therefore cautioned to pay attention to any such announcements.

Registry of Cattle - The proper Registration or Recordation paper,

as the case may be, will be transferred and furnished to the buyer for each animal after settlement has been made.

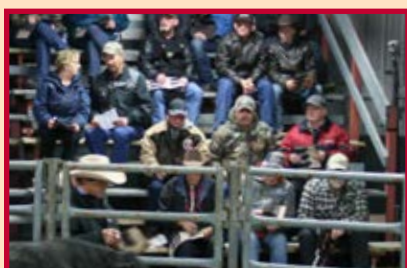
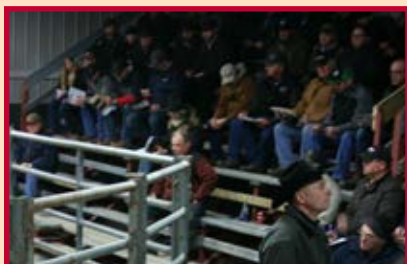
Settlement - No incidental expenses such as feed, care, A.I. signing fees,

interest, veterinary charges, etc. will be charged by either party when making settlement. If the seller is successful in proving the animal in question to be a breeder, then said animal will be reclaimed by the purchaser. Should the seller fail to prove the animal a breeder, then the buyer is guaranteed a satisfactory replacement. In no event shall the seller be responsible for more than the purchase price. Should a dispute arise over the quality of a replacement animal, the consignor will appoint a mediator.

Accidents - Although every precaution will be taken to protect the safety and comforts of buyers, neither the consignors., the auctioneer, or association assumes any responsibility in this matter, and disclaims any liability, legal or otherwise, in the event of accidents or loss of property.

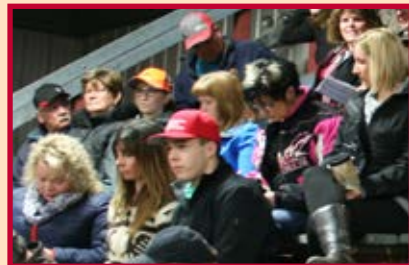
Rights and Obligations - The above terms and conditions of the sale shall constitute a separate transaction and the rights and obligations of the two.

Thank you to our Last Year's Buyers



Austyn Fowler
 Hairy Hill Colony*
 Daleray Stock Farms
 Grant Thompson*
 H Bar M Land & Cattle
 Darrell Rudkowsky*
 Byran Haggland
 Wes Denman
 Robert Rohatynchuk
 Grant Ford
 Joe Holt*
 Charlie Gould*
 Wayne Kuhn
 Leon Schaub*
 New Pine Colony*
 Peter And Violet Sawchuk*
 Glen Sawchuk*
 Loyd McLaughlin*
 Chris Horvat
 Kevin Goulet
 Jorden Bergheim
 Grant Swanson*
 Vern and Emily Ronsko*
 Malcolm Wilkowski*
 Blair Tkachuk*
 Sheldon Hauca*
 Chorney Farms*
 Smook Farms*
 Stone Cup Ranch*
 Smiling LB Land & Cattle*
 Litwin Brothers*
 Terry Eleniak*
 Pat White*
 Francis Blue*
 Steven Boyko*
 Hairy Hill Farming Co.*
 Redneck Trucking
 Laurence Kwiatowski
 Kurt and Christine Giebelhaus
 Ted Jobber*
 Al Taylor
 Darcy Romaniuk*
 Paul and Lori Kinnee*
 Scotford Colony
 Dave Kolotylo*
 Grant Withers
 Silvertop Simmentals
 Don Gulinsky*
 Robert Hennig*
 Blair Jackson
 Carl Pipke*
 Town View Farm
 Justin Chizawsky*
 Barry Soprovich*
 Mark Weiss*
 Fed-Well Farms*
 Ed Horon
 Johnny Gunther
 Jacob Weibe
 Crocus Simmentals
 Tim Goodbrand
 Canon Farms*
 Hasiuk Farms*
 Palsitt Farms*
 Leewood Ranch*
 Darcy Eliuk*

* repeat buyers



R Stuart
Box 2118
Vegreville, Alberta
T9C 1T3



If you do not wish to receive this catalogue, call 780.632.9358
or email sseven@telusplanet.net
and we will remove you from our mailing list.
Thank-You – Bull Fest Group

WILL BULL FEST 19 WILL

Simmental Bull Sale

Friday, March 1, 2019 at 1 p.m.
Camrose Regional Exhibition
Barn B, Camrose, Alberta

Catalogue Design by:
cattlepics.com