



Sunny Valley Simmentals

*29th
Annual*

**BULL
& FEMALE
SALE**

Sale Results

38 BULLS AVERAGED \$13,724

9 PUREBRED HEIFERS AVERAGED \$5,222

Wednesday, March 6, 2019 at 1:00 p.m.
Saskatoon Livestock Sales, Saskatoon, SK

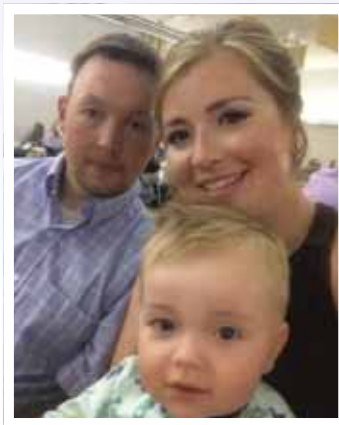
Welcome to our 29th Annual Bull & Female Sale. 2018 was an incredible year for us at Sunny Valley. We would like to once again thank everyone who supported or showed interest in our program.

We feel that the 2019 sale offering is as strong and consistent as ever before. The bulls are a very even group and we feel that whether you buy the 1st bull to sell or the 45th bull you will get a quality individual. This years offering will be headlined by SVS Betts 808F who had a tremendous show at Agribition this past fall. We continue to use the show ring as a marketing tool and exhibit cattle at Agribition every year, so be sure to stop by the stall for a visit if you attend! We will also highlight the offering of Brooks sons, they are super impressive and everyone who tours the pen picks them out. Walk This Way has another awesome set of sons to choose from. We are proud to have a bull of his calibre walking our pastures. There will be a wide variety of other sire groups to choose from that will offer a lot of different pedigrees for our repeat customers. Each one bringing something a little different to the table and we think you will like what you see. Once again we are offering a group of replacement females. These heifers have been managed right alongside our own replacements.

Remember that when you buy a bull or female from Sunny Valley you are buying from a program that has been committed to the Simmental breed for nearly 50 years. We stand behind our cattle and want to see them succeed in your programs. Please give us a call if you have any questions about the offering. We know these cattle inside and out and want to make sure that you get the bull or female that best fits your program. We hope that you can join us in Saskatoon on March 6!



Wayne & Linda Libke
PH: 306.544.2651
Cell: 306.221.4210
Email: wlibke@sasktel.net



Tyler, Erin & Dax Libke
Cell: 306.544.7633



Amanda Reay
Cell: 306.281.2645

www.sunnyvalleysimmentals.com



Please join us for lunch
at 12 noon Sale Day

View videos of the entire offering
on our website late February

Sunny Valley Simmentals

Bull & Female Sale

Wednesday, March 6, 2019 at 1:00 p.m.
Saskatoon Livestock Sales, Saskatoon, SK
10 km west of Saskatoon on Hwy 14

On Offer: 20 Red Yearling Bulls
16 Black Yearling Bulls
9 Fullblood Yearling Bulls
9 Replacement Heifers

Sales Staff:

Ryan Dorran, Auctioneer 403.507.6483
Ringmen
Darryl Snider 780.385.5561
Craig Flewelling 403.556.0515

Sale Day Phones:

Wayne Libke 306.221.4210
Tyler Libke 306.544.7633
SLS 306.382.8088
Scott Bohrson 403.370.3010
Darryl Snider 780.385.5561
Martin Bohrson 306.220.7901

SLS Representatives:

Michael Fleury 306.222.9526
Harvey Welter 306.227.8684
Ryan Hurlburt 306.292.9812

Delivery Options:

Option 1 - \$50 off per lot if picked up sale day
Option 2 - Free delivery to central points in Saskatchewan, Alberta & Manitoba as soon as possible after the sale, at the seller's convenience. In most cases we will be able to delivery directly to your yard, but do ask for your cooperation if needed.
Option 3 - Bulls may be left at the farm free of charge until April 15, then picked up or delivery arrangements can be made. All bulls returning to the farm must be insured.

Semen Collection: Sunny Valley reserves the right to collect semen on any bull in the sale for in herd use only. Semen will be collected at the seller's expense and the buyer's convenience.

Health & Fertility: All bulls will be semen tested and sell fully guaranteed. Bulls and females are on a full vaccination program that includes. Inforce 3 (at birth), Pyramid 4 with Presponse (spring & fall), Tasvax 8 (spring & fall), Ivomec (Oct & Jan). Bulls are also double vaccinated with fusoguard for footrot.

US Buyers: Sunny Valley will do the necessary health testing at cost for bulls and females. Delivery will be provided to the border.

Insurance:

Cassie Dorran, Dorran Marketing Inc. 403-507-5953

Accommodations:

Best Western Plus 306 242-2299
Travelodge 306 242-8881

Sunny Valley Simmentals has been passionately breeding Simmentals for upwards of 50 years and they have made a huge impact on the breed and its overall success. From the beginning they have emphasized to always excel their program with outstanding quality and always offer their very best. This family operation lives and breathes Simmental and is a great spot to source your next genetic building block to enhance any program.

The bulls on offer are worth the drive and you'll be impressed, as they have the quality that the beef industry is striving for with excellent cow families backing them. This high production cow herd annually produces an outstanding set to be offered but this year's is truly outstanding. There are special individuals in each section and we have confidence you will find bulls that are stamped with the same quality we annually see from Sunny Valley. Their genetics have been extremely influential in the industry and we feel that bulls like Betts, Freedom, amongst many more will have a positive lasting impression on the advancement of the breed and the programs that invest in them. This deep set of bulls is designed for the most astute purebred and commercial man alike and we encourage you to study the offering closely. As always, a select group will be offered off of the front end of their replacement pen and can be invested in with confidence.

They stand behind their bulls and females with the utmost confidence and they are proud to offer them to the entire industry. We encourage you to contact anyone from the Sunny Valley program to discuss the offering as they would be excited to visit with you about it. Hopefully you can join us on March 6 in Saskatoon but if you are tied up and can't attend due to your busy schedule, feel free to contact any of us at BMS to represent your needs in a professional manner. We hope you'll be in the SLS seats come sale day as it is sure to be an impressive offering from start to finish.



Scott Bohrson
403-370-3010



Darryl Snider
780-385-5561



Rob Voice
306-361-6775



Martin Bohrson
306-220-7901



Taylor Richards
306-821-4169



Matt Criddle
306-539-6934



Geoff Anderson
306-731-7921

Internet Bidding Available
DLMS
www.dlms.ca
For more information Call DLMS Reps:
Whitney Bosovich 780.991-3025
Mark Shologan 780.699.5082

\$13,000

EAST POPLAR SIMMENTALS



BW	205 DW	365 DW	CE	BWT	WWT	YWT	Milk	MCE	MWWT
88	808	1445	13.6	0.1	68	102.8	26.7	8.4	60.7

SVS 1 Sunny Valley PRIDE 36F

Homo Pld Purebred Bull WLLS 36F
CA-PG1233884 13 Jan 2018

MRL RED WHISKEY 101B
SVS BROOKS 669D
SVS RED SARA 92X
SVS SCOUT 25X
SUNNY VALLEY PRIDE 27Z
SUNNY VALLEY MS TONI 45T

We start the sale catalogue off this year with a great set of SVS Brooks sons that are sure to impress. Pride 36F is moderate framed meat machine that is built from the ground up to be a herdbull. He has a great set of numbers that say both calving ease and performance. His dam is a powerful Scout female that is always picked out by visitors. She has two top daughters in our herd and a son at Diamond K Cattle. Homo Polled.



Maternal Brother

\$8,000

BRAVO ZULU FARMS



BW	205 DW	365 DW	CE	BWT	WWT	YWT	Milk	MCE	MWWT
97	835	1408	7.4	3.1	73.5	108.9	21.3	2.5	58.1

SVS 2 Sunny Valley EDITION 43F

Homo Pld Purebred Bull WLLS 43F
CA-PG1233953 14 Jan 2018

MRL RED WHISKEY 101B
SVS BROOKS 669D
SVS RED SARA 92X
NUG ROYAL RED 324A
SUNNY VALLEY CARRIE 52C
SUNNY VALLEY CARRIE 16X

Once again we have a Brooks son that has impressed us all year long. He has great length of body a super hair coat and that dark, dark cherry red color that gets noticed time after time. His dam 52C produced a Deputy son last time that was popular and sold to Brent O'Brian. Edition's grand dam has put 2 bulls through the sale, his great grand dam had four and his great great grand dam had four. All were top end high selling bulls that went to top commercial operations or Purebred breeders. The predictability is bred into Edition so don't miss him sale day. Homo Polled.



Maternal Brother



SVS BROOKS 834F

Homo Pld Purebred Bull TLAS 834F
CA-PGI235889 13 Jan 2018

MRL RED WHISKEY 101B
SVS BROOKS 669D
SVS RED SARA 92X
ACS EVERREADY 970W
SVS RED SASHA 66Z
TESS MS RED 56T

834F is a true performance bull, the heavy weight of the pen. He is extremely long bodied, square hiped and big nutted. You have to appreciate his dark red color, which is consistent in the SVS Brooks 669D progeny; Brooks topped our 2017 sale at \$60,000 and is one of the most consistent sires we have ever used. 834F has a maternal brother is working for Ken Habermehl and a sister for Mader Ranches. 66Z is a beautiful cow who knows how to produce. If you sell your calves by the pound you will need to look 834F up sale day. Homo polled.

\$24,000

BATA BROS. SIMMENTALS



BW	205 DW	365 DW	CE	BWT	WWT	YWT	Milk	MCE	MWWT
106	979	1609	7.5	4	84.6	127.5	24	5	66.3

TLAS 567C - Maternal Sister



SVS TYCOON 841F

Homo Pld Purebred Bull TLAS 841F
CA-PGI235896 15 Jan 2018

MRL RED WHISKEY 101B
SVS BROOKS 669D
SVS RED SARA 92X
ACS EVERREADY 970W
SVS RED ANNIE 411B
3D MISS RED NOREMAC 211U

SVS Tycoon 841F has been a standout from day one. He is well balanced, big hiped, deep quartered, big ribbed and huge scrotaled. 841F is as complete of an individual as any in the offering. Maybe most importantly he is backed by an elite dam and tremendous cow family. 411B is an awesome young cow that traces back to the great Noremac 16M cow that did so much for the LaBatte/3D programs. 841F's sire, Brooks, was used in a number of programs and has impressed everyone with his first calf crop. You will be hearing a lot more from him in the future. Tycoon 841F is one of the elite power bulls that we have produced and we can't wait to see the impact he will have for his new owner. Homo polled.

\$75,000

DEEG SIMMENTALS & CANADIAN SIRE



BW	205 DW	365 DW	CE	BWT	WWT	YWT	Milk	MCE	MWWT
103	957	1594	7	4.3	84.6	124.6	24.6	3.3	66.9

SVS Brooks 669D



SVS 5 Sunny Valley **NASCAR 72F**

Homo Pld Purebred Bull WLLS 72F CA-PG1234086 21 Jan 2018

SVS BROOKS 669D

MRL RED WHISKEY 101B
SVS RED SARA 92X
MUIRHEADS LIGHTS OUT 4Y
MADER P DESIGNER 75W

WFL RED PARFAIT 336A

BW	205 DW	365 DW	CE	BWT	WWT	YWT	Milk	MCE	MWWT
100	873	1452	8.2	2.7	77.1	115.5	21.7	4.5	60.3

Some say length of body is the most difficult thing to breed into a calf crop. Well Nascar should help get it done. He is once again a super long, dark red Brooks son. The Brooks bulls are going to be noticed at sales this spring. Nascar's dam is one of our top red cows. Her Matrix son in last year's sale sold to the good program at Jansen Ranches in AB. Homo Polled.



SVS 6 Sunny Valley **MATRIX 63F**

Homo Pld Purebred Bull ALLS 63F CA-PG1234074 19 Jan 2018

SVS MATRIX 530C

SVS SCOUT 25X
SVS RED SATIN 21Z
ACS EVERREADY 970W
IPU MS. RED ESSENCE 247W

SSUNNY VALLEY ESSENCE 23Z

BW	205 DW	365 DW	CE	BWT	WWT	YWT	Milk	MCE	MWWT
104	877	1394	5.7	3.7	69.4	103.6	23.6	1.1	58.3

63F is mothered by a real top Everready daughter that hasn't missed yet. She has sons working for Camden Cattle Co. and Cody Faux. Her two daughters in herd are doing a great job on their calves. Homo Polled.

23Z - Dam



SVS 7 Sunny Valley **MATRIX 122E**

Homo Pld Purebred Bull WLLS 122E CA-PG1233865 30 Dec 2017

SVS MATRIX 530C

SVS SCOUT 25X
SVS RED SATIN 21Z
ACS EVERREADY 970W
ERIXON LADY 67W

SUNNY VALLEY CHEYENNE 62C

BW	205 DW	365 DW	CE	BWT	WWT	YWT	Milk	MCE	MWWT
89	833	1471	9.6	1.6	63.5	97.3	22.3	5	54.1

122E is once again mothered by an exceptional Everready female that we expect great things from in the future. 122E has impressed us from the start with just an 89 lb. birthweight and has continued to grow and develop into a 1471 lb. yearling weight. A very complete herdsire that has a lot of potential. Homo Polled.



SVS 8 Sunny Valley **CAPTAIN 41F**

Homo Pld Purebred Bull WLLS 41F CA-PG1233951 14 Jan 2018

BGS/BM CAPTAIN SCREAM 63D

SVS CAPTAIN MORGAN 11Z
RF SCREAM 215Z
ACS EVERREADY 970W
OJA MAREN 14L

SUNNY VALLEY MAREN 31Z

BW	205 DW	365 DW	CE	BWT	WWT	YWT	Milk	MCE	MWWT
101	849	1403	6	3.4	75.1	110.8	24.6	5.6	62.2

41F is a Captain Scream son that displays exceptional length and style. He is an easy moving individual that is very sound structured. His dam 31Z has one daughter in herd and sons working at Gray Farms and Salty Lake. Homo Polled.



\$120,000
KT RANCH &
CANADIAN SIRE



SVS BETTS 808F

BGS/BM CAPTAIN SCREAM 63D
WFL RED SAGE 506C

SVS CAPTAIN MORGAN 11Z
 RF SCREAM 215Z
 R PLUS RELOAD 2006Z
 WFL RED SAGE 1003Y

Homo Pld Purebred Bull TLAS 808F CA-PTG1235797 4 Jan 2018

BW	205 DW	365 DW	CE	BWT	WWT	YWT	Milk	MCE	MWWT
93	876	1468	3.9	4.5	81.9	122	16.9	1.9	57.9

SVS Betts 808F has been in a league of his own from day one. From an early age he has displayed the same muscle shape, huge rib and tremendous presence that he does today. We showed Betts at Agribition this past fall where he was the President's Classic All Breeds Champion, Senior Bull Calf Champion and Reserve Grand Champion Bull. He made a lot of friends in Regina and we can't wait for everyone to see him this spring as he continues to impress as he matures. His pedigree will rival any with the \$37,000 Sage 506C donor on the bottom side and Captain Scream, the former Agribition Champion on the top. Sage 506C embryos are in huge demand averaging over \$2000/embryo and Captain Scream semen sells consistently for \$400/dose or more. SVS Betts 808F is a unique breeding piece and we are very proud to offer him to the Simmental industry. Homo polled.



Captain Scream - Sire



CWA President's Classic Champion



CWA Reserve Grand Champion Bull



WFL 506C - Dam



SVS 10 Sunny Valley DEPUTY 68F

Homo Pld Purebred Bull WLLS 68F CA-PG1234079 20 Jan 2018

IPU RED DEPUTY 25C

KUNTZ SHERIFF 8A
IPU 56U MS. RED LINER 81A
R PLUS RELOAD 2006Z
DEEG MS HOT TOPIC 32B

SUNNY VALLEY HOT TOPIC 24D

BW	205 DW	365 DW	CE	BWT	WWT	YWT	Milk	MCE	MWWT
91	848	1466	7.4	1.6	75.7	110.8	21	4.4	58.9

The Deputy sons were very popular in last year's sale and bulls like 68F are the reason why. 68F combines calving ease and performance in a very attractive hairy package. His two year old Reload dam and his Horizon grand dam have very neat tidy udders and milk well. 68F is the kind of bull we could use a lot more of. Check him out closely sale day. Homo Polled.



SVS 11 Sunny Valley DEPUTY 4F

Polled Purebred Bull WLLS 4F CA-PTG1233577 1 Jan 2018

IPU RED DEPUTY 25C

KUNTZ SHERIFF 8A
IPU 56U MS. RED LINER 81A
IPU REVOLUTION 172U
BEECH BROS UNNA 817U

BEECH BROS YARA 122Y

BW	205 DW	365 DW	CE	BWT	WWT	YWT	Milk	MCE	MWWT
84	758	1281	4.4	3.3	73	108.8	27.6	2.7	64.1

4F is a dark red Deputy son that is smooth made and has a little extra stretch. With just an 84 lb. birthweight 4F is sure to calve well. His dam is the Beech Bros Yara 122y cow that was one of the high sellers at the inaugural Friday Night Lights Sale.



SVS 12 SVS RED ZONE 876F

Homo Pld Purebred Bull TLAS 876F CA-PG1235951 7 Feb 2018

IPU RED ZONE 149D

IPU RED ZONE 16A
IPU MS. TUBEROSE 287Z
SVS CAPTAIN MORGAN 11Z
SVS BLK HONEY 102Z

SVS RED HONEY 434B

BW	205 DW	365 DW	CE	BWT	WWT	YWT	Milk	MCE	MWWT
99	838	1342	5.1	4.2	65.6	92.8	22.1	3.3	54.9

876F is a smooth made, well balanced son of our new herd sire, IPU Red Zone 149D. His mother is a big ribbed, great uddered Captain Morgan daughter that we really like. 876F is one of the youngest bulls in the offering. He is going to be a very impressive mature bull. Homo polled.



SVS 13 SVS BLUE CHIP 815F

Scurred Purebred Bull TLAS 815F CA-STG1235811 7 Jan 2018

SPRINGCREEK BLUE CHIP 9D

SPRINGCREEK LINER 56U
SPRINGCREEK TARA 111R
SUNNY VALLEY UP-ROAR 90U
3D MISS SARA 158U

SVS RED SARA 92X

BW	205 DW	365 DW	CE	BWT	WWT	YWT	Milk	MCE	MWWT
67	737	1235	7	2.7	69.3	103.8	34.1	5.2	68.8

815F is an embryo calf off of the extremely consistent Sara 92X donor. He is moderate, super dark red and has lots of hair. Look for 815F to moderate birth weight and add maternal strength.

SVS 14 *SVS* **BLUE CHIP 849F**

Homo Pld Purebred Bull TLAS 849F
CA-PTGI235904 18 Jan 2018

SPRINGCREEK LINER 56U
SPRINGCREEK BLUE CHIP 9D
SPRINGCREEK TARA 111R
SUNNY VALLEY UP-ROAR 90U
SVS RED SARA 92X
3D MISS SARA 158U

849F has been the pick of the 4 flush brothers from day one. He is super stout, has tremendous hair, big nuts, great feet and that herd bull look. His pedigree is unique, proven and widely accepted. The Sara 92X donor is as proven as they come with her most notable accomplishment being the \$60,000 SVS Brooks 669D. We also have a couple of 92X daughters in production and they are among our most impressive cows. 849F has that sought after blaze face and is a true herd bull in the making. Homo polled.

\$20,000
WALLGREN FARMS



BW	205 DW	365 DW	CE	BWT	WWT	YWT	Milk	MCE	MWWT
104	891	1489	7	2.7	69.3	103.8	34.1	5.2	68.8



TLAS 92X - Dam

SVS 15 *SVS* **BLUE CHIP 850F**

Homo Pld Purebred Bull TLAS 850F CA-PTGI235905 18 Jan 2018

SPRINGCREEK BLUE CHIP 9D
SPRINGCREEK LINER 56U
SPRINGCREEK TARA 111R
SUNNY VALLEY UP-ROAR 90U
SVS RED SARA 92X
3D MISS SARA 158U

BW	205 DW	365 DW	CE	BWT	WWT	YWT	Milk	MCE	MWWT
98	816	1301	7	2.7	69.3	103.8	34.1	5.2	68.8

We purchased an exclusive semen package on Blue Chip to incorporate his maternal strength and hopefully get a few blaze faces as well. 850F has a lot to offer! You have to appreciate the foot quality on these Blue Chip sons. They will be highly maternal producing excellent females, but also have the performance and stoutness to be a terminal cross as well. Look to add a couple of these flush brothers to add consistency to your calf crop. Homo polled.

\$7,000

**CIRCLE LAZY J
CATTLE**



SVS 16 *SVS* **BLUE CHIP 842F**

Homo Pld Purebred Bull TLAS 842F CA-PTGI235897 15 Jan 2018

SPRINGCREEK BLUE CHIP 9D
SPRINGCREEK LINER 56U
SPRINGCREEK TARA 111R
SUNNY VALLEY UP-ROAR 90U
SVS RED SARA 92X
3D MISS SARA 158U

BW	205 DW	365 DW	CE	BWT	WWT	YWT	Milk	MCE	MWWT
84	810	1364	7	2.7	69.3	103.8	34.1	5.2	68.8

842F is a moderate, deep ribbed, big footed son of the AI sire, Blue Chip, and our Sara 92X donor. 92X is a true herd bull producer and you will be impressed by her 4 embryo sons on offer. There is a lot of maternal strength in this pedigree so you will want to keep every daughter of 842F. Homo polled

\$6,750

D&D CATTLE CO





BW	205 DW	365 DW	CE	BWT	WWT	YWT	Milk	MCE	MWWT
96	861	1479	9.9	2.5	71.5	109.6	24.4	6.5	60.2

SVS 17 Sunny Valley
EXCEL 62F

Homo Pld Purebred Bull WLLS 62F
CA-PG1234072 18 Jan 2018

IPU RED WESTERN 49X
KWA FLYF RED MOUNTAIN 16Z
KWA MS ROCK 14X
R PLUS RELOAD 2006Z
SUNNY VALLEY BIANCA 53D
SUNNY VALLEY BIANCA 88B

Here is one of my favorite bulls in the pen. Excel is very complete individual. He combines the calving ease of Red Mountain with the performance and power of his Reload dam and generations of top cows. Excel has a great set of EPD's right from CE & BW thru performance and maternal. Be sure to check out Excel sale day. You will be impressed by the width he has and how he carries his muscle deep into his quarter. He is an easy moving big nuted herdsire. Homo Polled.



KWA FLYF Red Mountain



BW	205 DW	365 DW	CE	BWT	WWT	YWT	Milk	MCE	MWWT
97	850	1322	7.1	2.3	71	107.1	24.8	2.9	60.3

SVS 18 Sunny Valley
MOUNTAIN 14F

Homo Pld Purebred Bull ALLS 14F
CA-PG1233861 4 Jan 2018

IPU RED WESTERN 49X
KWA FLYF RED MOUNTAIN 16Z
KWA MS ROCK 14X
R PLUS RELOAD 2006Z
SUNNY VALLEY ESSENCE ID
SUNNY VALLEY ESSENCE 23Z

14F is mothered by a very good Reload two year old that has another top bull calf on her already for next year. You will notice some of the top bulls in the sale are out of Reload females. 14F is a long sided smooth made herdsire that is built for calving ease. He has that attractive dark red color that is easy to like. Homo Polled.



Granddam

SVS
19

Sunny Valley
BACARDI 121E

Homo Pld Purebred Bull WLLS 121E
CA-PG1233864 27 Dec 2017

NCB COBRA 47Y
MADER WALK THIS WAY 224B
MADER P IRON SUGAR 7X
SVS CAPTAIN MORGAN 11Z
SUNNY VALLEY DESTINY 40B
SNIDER'S BLACK DESTINY

Definitely one of our favorite bulls here. Bacardi puts a lot of assets in one package. He is super long and like all the Walk This Way bulls, when you get behind him you will see a powerful hip and a big wide top. He will add pounds to the calf crop at weaning. A very impressive individual. Unfortunately we lost his dam here a few weeks ago but she did give us an excellent Milwaukee daughter that just calved a few days ago and looks great. Bacardi's dam is a daughter of our 102N donor that we have sold many full sibs to 40B, to great programs. Barcardi is a powerful herdsire that has a great future. Homo Polled.

\$11,500

FERME ROGER FORTIER



WLLS 35C Full Sister to Dam

BW	205 DW	365 DW	CE	BWT	WWT	YWT	Milk	MCE	MWWT
103	869	1539	6	3.7	80.1	124.1	23.7	3.5	63.8

SVS
20

SVS WALKER 859F

Scurred Purebred Bull TLAS 859F CA-SG1235928 26 Jan 2018

MADER WALK THIS WAY 224B

NCB COBRA 47Y
MADER P IRON SUGAR 7X
SVS CAPTAIN MORGAN 11Z
PAW RED 113Y

SVS RED CAMEO 545C

BW	205 DW	365 DW	CE	BWT	WWT	YWT	Milk	MCE	MWWT
95	940	1639	7	4.2	96.4	154.6	23.8	5.4	72

859F is a tremendous beef bull, the kind we strive to raise. He is real square hiped, heavy muscled and big topped. He was among the top performers at both weaning and yearling. A true power bull! His dam, 545C, is a gorgeous Captain Morgan daughter, the kind we can't get enough of! A full brother was a favorite and high seller last year selling to Kolla Land & Cattle. Expect 859F to excel at producing both steers and replacement heifers.

\$6,500

KOLLA LAND & CATTLE



SVS
21

SVS WALKER 865F

Homo Pld Purebred Bull TLAS 865F CA-BPTG1235936 31 Jan 2018

MADER WALK THIS WAY 224B

NCB COBRA 47Y
MADER P IRON SUGAR 7X
OLF BLACK LEGEND T14
SPRINGCREEK BROOKE 12P

SPRINGCREEK DETROIT 32W

BW	205 DW	365 DW	CE	BWT	WWT	YWT	Milk	MCE	MWWT
99	802	1332	7.6	2.9	72.8	110	30.2	4.6	66.6

865F is an embryo calf from our 32W donor cow. 32W is still going strong at 10 years old with a great udder and feet. 865F is moderate, heavy haired and big middled. Full brothers sold in last year's sale to Werstroh Farms and Lost River Farming. Homo polled. Homo black.

\$7,250

BLACK WING CATTLE



MBJ 32W - Dam

\$17,000

TRAXINGER SIMMENTALS



TLAS 603D - maternal sister

BW	205 DW	365 DW	CE	BWT	WWT	YWT	Milk	MCE	MWWT
96	829	1479	8.9	2.7	81.2	127.8	24.6	6.8	65.2

SVS 22 *SVS* WALKER 820F

Homo Pld Purebred Bull TLAS 820F
CA-BPGI235875 10 Jan 2018

NCB COBRA 47Y
MADER WALK THIS WAY 224B
MADER P IRON SUGAR 7X
SVS CAPTAIN MORGAN 11Z
SVS BLK ZOEY 401B
MRL MISS 405X

820F packs a lot of pounds in a moderate, complete package. He has been a favorite all along and will be easily found sale day. 820F is super sound, square made and great haired. 401B has been a consistent producer with a full brother to 820F selling to Sunnyside Simmentals last year and a maternal sister working for McMillen Ranching. She already has a SVS Brooks son on the ground this year that looks awesome! These Walk This Way sons are extremely consistent and are the right kind. He is a true breeding bull and 820F is one of his best. Homo polled. Homo black.



\$5,500

**WING OVER 7
LAND & CATTLE**

SVS 23 *Sunny Valley* WALKER 79F

Homo Pld Purebred Bull WLLS 79F CA-BPGI234092 26 Jan 2018

MADER WALK THIS WAY 224B
SUNNY VALLEY CASSIE 87C
NCB COBRA 47Y
MADER P IRON SUGAR 7X
MRL SUMMIT 65Z
SUNNY VALLEY BLK DIVA 69A

BW	205 DW	365 DW	CE	BWT	WWT	YWT	Milk	MCE	MWWT
86	832	1424	7.4	1.9	73.7	113.4	21.6	3.2	58.5

79F packs a lot of pounds into a moderate package. He may not be the biggest bull in the pen but he is as well made as any. His cow family traces back to our Destiny 102N donor female. Unfortunately his dam was injured last fall. If you are looking for a bull that combines calving ease, performance and a top cow family check out 79F. Homo Polled.



\$4,500

D&D CATTLE CO

SVS 24 *Sunny Valley* WALKER 99F

Homo Pld Purebred Bull WLLS 99F CA-BPGI234253 23 Feb 2018

MADER WALK THIS WAY 224B
SUNNY VALLEY DESIRE 13C
NCB COBRA 47Y
MADER P IRON SUGAR 7X
SVS CAPTAIN MORGAN 11Z
RDD MS SHEAR DESIRE 4X

BW	205 DW	365 DW	CE	BWT	WWT	YWT	Milk	MCE	MWWT
101	878	1408	8.9	2.2	76.3	116.1	24.7	6.2	62.9

One of the most impressive things about the Walk This Way calves is the vigor they have at birth. Up and going in short order. He calves very well and throws plenty of performance. 99F comes from a very good Captain Morgan three year old with an exceptional udder. He is one of the youngest bulls in the sale. Don't overlook him. Homo Polled.

SVS
25

WALKER 875F

Homo Pld Purebred Bull TLAS 875F
CA-BPG1235949 6 Feb 2018

NCB COBRA 47Y
MADER WALK THIS WAY 224B
MADER P IRON SUGAR 7X
SVS CAPTAIN MORGAN 11Z
SVS BLK ABBY 552C
SWAN LAKE MS EDITION 63Y

875F is just a February bull that is as complete as any. He is structurally sound, good footed, big middled and has tremendous hair. 875F has a great profile, square hip and lots of quarter. The Walk This Way, Captain Morgan cross just simply works. It produces a consistent product that is right for today's industry. There are several 3/4 brothers to choose from and all of them rank near the top of the pen. 875F is worth a second look. Homo polled. Hetero black.

\$15,000

MOONSHINE SIMMENTALS



BW	205 DW	365 DW	CE	BWT	WWT	YWT	Milk	MCE	MWWT
87	831	1461	8.8	2.5	80	122.8	21.5	6.4	61.5

TLAS 431B - full brother to dam

SVS
26

WALKER 884F

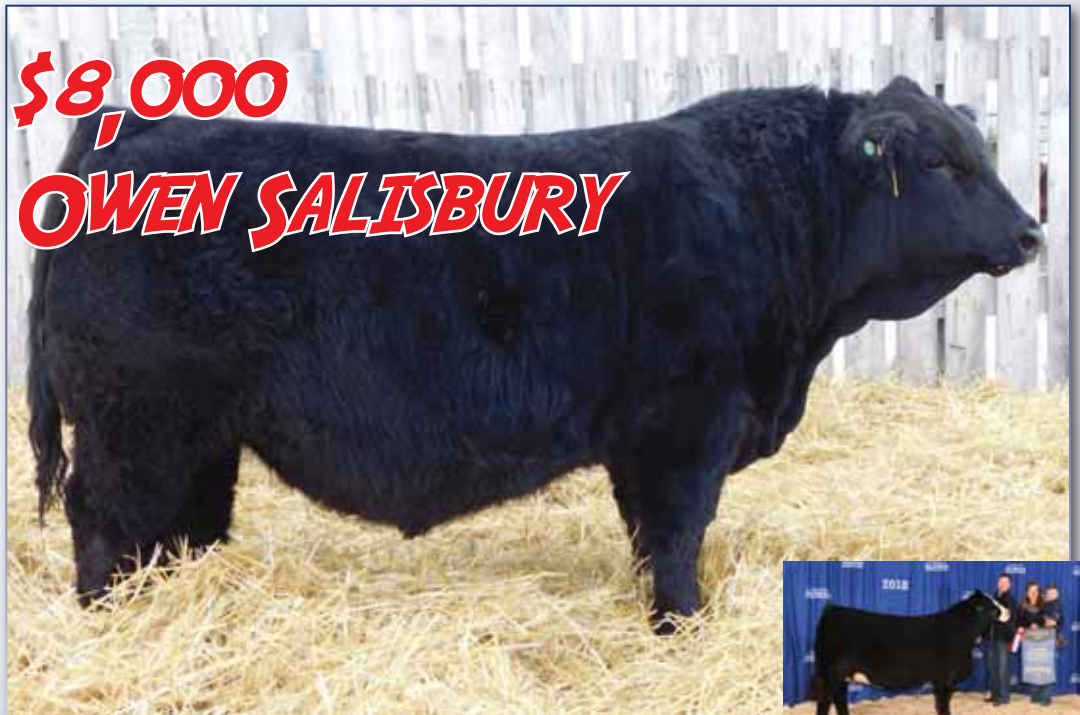
Homo Pld Purebred Bull TLAS 884F
CA-BPG1235964 25 Feb 2018

NCB COBRA 47Y
MADER WALK THIS WAY 224B
MADER P IRON SUGAR 7X
SVS CAPTAIN MORGAN 11Z
SVS EILEEN 616D
DESTINY DREAM EILEEN

884F will be the youngest bull on offer but you would never know it looking at him. Just a February bull he holds his own in a pen full of bulls a month or so older. 884F is the spitting image of his 3/4 brother, 875F. He is sound, big footed, deep ribbed and has loads of awesome hair. 884F is backed by a tremendous young cow in 616D, and a great cow family. The Eileen cow family is one of our best! Walk This Way is also a tremendous female producer. A daughter was Junior Champion female at Agribition this past fall and went on to be the high Seller in Friday Night Lights sale in December for \$76,000! Homo polled. Hetero black.

\$8,000

OWEN SALISBURY



BW	205 DW	365 DW	CE	BWT	WWT	YWT	Milk	MCE	MWWT
93	889	1462	9	3.5	80.5	120.5	23.3	6.4	63.6

TLAS 788E - paternal sister



BW	205 DW	365 DW	CE	BWT	WWT	YWT	Milk	MCE	MWWT
92	865	1476	6.1	3.7	82.2	122.1	26.7	3.1	67.8

SVS **27** *SVS* WESTCOTT 830F

Homo Pld Purebred Bull TLAS 830F
CA-BPTG1235885 12 Jan 2018

TNT 90 PROOF Z401
WFL WESTCOTT 24C
WFL SWEET LICIOUS 1044X
HART ALL IN W382
BLACKSAND SADIE 4Z
BLACKSAND LINETTE 854U

830F is the result of an embryo purchased from Rancier Farms. He is thick made, huge middled and has a nice big foot. His dam is an elite donor female with a great udder. We have a full sister in the replacement pen that is equally impressive. 830F offers a different pedigree from our program and will be easy to find sale day. Homo polled. Hetero black.



Blacksand Sadie 4Z- Dam



SVS **28** *Sunny Valley* HUSKER 31F

Homo Pld 7/8 Bull ALLS 31F CA-BPTRS1233879 11 Jan 2018

W/C HUSKER 750C

WCS MR HUSKER 3076A
MISS WERNING 534R
LFE STREET LEGAL 510S
TLG FLIRTIN WITH YOU

RF FLIRTIN FOR CERTIN 37U

BW	205 DW	365 DW	CE	BWT	WWT	YWT	Milk	MCE	MWWT
87	808	1286	11	0.9	52.7	73.3	25.1	5.7	51.5

Husker 31F is a very unique prospect. He is a transplant son of the outcross Husker and the great Flirtin For Certain 37U. He is a moderate stout, hairy calf that we really like. All his numbers say he should work in the heifer pen and you will want to keep all the daughters. Homo Polled, Homo Black.



SVS **29** *SVS* CREED 860F

Polled 1/2 Blood Bull TLAS 860F unregistered

JPCC MR CREED 104D

S TITLEST
SPRINGCREEK HONEY 46A
JPCC SUPER SMOOTH 69B
JPCC BOBBI 203B

JPCC MISS BOBBI 139D

BW	205 DW	365 DW	CE	BWT	WWT	YWT	Milk	MCE	MWWT
90	871	1425	14.7	0.6	65.1	99.0	24.5	10.1	57.1

860F is a 1/2 blood SimAngus bull that should provide some added calving ease. His mother is a really good uddered, big ribbed female. 860F is smooth made, well balanced and sound structured. He also provides a little different pedigree.

SVS
30

Sunny Valley
MORGAN 61F

Homo Pld Purebred Bull ALLS 61F
CA-BPG1234071 18 Jan 2018

HARVIE JDF WALLBANGERIIIIX
SVS CAPTAIN MORGAN 11Z
SUNNYVALLEY BLK JENNA 88U
OLF ODIN U5
DESTINY ODIN JUANITA
IRCC XCEPTIONAL 3X

61F is one of the top black baldy Captain Morgan sons we have offered. He has a ton of length and hip and is sound from the ground up. His Odin dam is also a baldy female and has great feet and a very good udder. The EPD's on 61F are an excellent combination of calving ease and performance. Add to that he is Homo polled and Homo black and you have one of the most predictable black bulls on offer. Homo Polled, Homo Black.

\$19,000

**RKT SIMMENTALS &
CURLE FARMS**



BW	205 DW	365 DW	CE	BWT	WWT	YWT	Milk	MCE	MWWT
92	871	1476	13.1	1	76.2	116.4	25.3	8.9	63.4

SVS Capatin Morgan

SVS
31

Sunny Valley
MORGAN 5F

Homo Pld Purebred Bull WLLS 5F CA-BPTGI233578 1 Jan 2018

SVS CAPTAIN MORGAN 11Z
SNIDER'S BLACK DESTINY

HARVIE JDF WALLBANGERIIIIX
SUNNYVALLEY BLK JENNA 88U
NICHOLS BLK DESTINY D12
SNIDER'S BLACK PREM

BW	205 DW	365 DW	CE	BWT	WWT	YWT	Milk	MCE	MWWT
94	817	1409	4.1	5	76.6	117.3	22	1.9	60.3

5F is the last embryo we have off of the Destiny 102N donor cow. There were 11 full sibs including 5F. Six bulls and five females. A great flush. The bulls have all sold thru the sale into some top herds. We kept 3 daughters in herd and sold two. They averaged \$16,500. The bulls averaged \$7500. 5F like all the Captain Morgan's offer that length and big strong hip. Homo Polled.

\$4,500

HARVEY WELTER



SVS
32

Sunny Valley
MORGAN 19F

Homo Pld Purebred Bull WLLS 19F CA-BPG1233867 7 Jan 2018

SVS CAPTAIN MORGAN 11Z
SUNNY VALLEY TONI 39B

HARVIE JDF WALLBANGERIIIIX
SUNNYVALLEY BLK JENNA 88U
SVS SCOUT 25X
SUNNY VALLEY MS TONI 45T

BW	205 DW	365 DW	CE	BWT	WWT	YWT	Milk	MCE	MWWT
103	879	1591	9.7	3.3	79	122.5	22.5	6.1	62

19F is one of the top performing bulls in the pen. He has a great length, a big strong hip and loads of middle. All the ingredients necessary to produce an impressive calf crop. His dam is a big middled, sweet fronted Scout female who is a full sister to the dam of Lot 1. Homo Polled.

\$10,500

JEREMY ANDREW





SVS 33 *SVS* HUNTER 870F

Homo Pld Purebred Bull TLAS 870F CA-BPG1236116 2 Feb 2018

WLB BOUNTY HUNTER 365C

LFE BOUNTY 3118Z

LFE BS MARY 26A

CCR COWBOY CUT 5048Z

IPU MS. TULA 19B

IPU MS. COWBOY CUT 135D

BW	205 DW	365 DW	CE	BWT	WWT	YWT	Milk	MCE	MWWT
103	841	1371	3.2	3.8	72	105.4	23.1	0.5	59.1

870F is a moderate, complete made individual that is backed by a tremendous mamma cow. We purchased 135D from LaBatte Simmentals along with Rancier Farms and Canadian Donors for \$43,000. She has since entered our donor program and you will hear a lot more from her in the future. Look for 870F to add maternal strength and structural integrity to his calf crop. He should provide more calving ease than his birth weight indicates. Homo polled. Homo black.



SVS 34 *SVS* HUNTER 852F

Homo Pld Purebred Bull TLAS 852F CA-BPG1263723 19 Jan 2018

WLB BOUNTY HUNTER 365C

LFE BOUNTY 3118Z

LFE BS MARY 26A

SVS CAPTAIN MORGAN IIZ

DESTINY DREAM EILEEN

SVS EILEEN 630D

BW	205 DW	365 DW	CE	BWT	WWT	YWT	Milk	MCE	MWWT
102	793	1404	1.8	4.7	72.9	111.6	20.6	-0.8	57.1

852F is heavy haired, long bodied and sound. His mother is the thickest cow on the place. She comes from the Eileen cow family so you can be confident that 852F will be a female producer. Have a close look at 852F, he could be a sleeper. Homo polled. Homo black.



SVS 35 *Sunny Valley* BOUNTY 37F

Homo Pld Purebred Bull WLLS 37F CA-BPG1233943 13 Jan 2018

WLB BOUNTY HUNTER 365C

LFE BOUNTY 3118Z

LFE BS MARY 26A

X-T RED BODACIOUS 3B

SUNNY VALLEY KASSIE 84Z

SUNNY VALLEY KASSIE 58D

BW	205 DW	365 DW	CE	BWT	WWT	YWT	Milk	MCE	MWWT
90	890	1413	10.9	2.1	69.9	106.2	21.8	6.4	56.8

We used Bounty Hunter on many of our Black heifers in 2017 and are quite pleased with the results. He throws calves that come easy. They develop into deep sided attractive yearlings. 37F has done well all along ranking 3rd in his contemporary group at weaning and posting a 1400 + yearling weight. Homo Polled.



SVS 36 *SVS* HUNTER 833F

Homo Pld Purebred Bull TLAS 833F CA-BPG1235888 13 Jan 2018

WLB BOUNTY HUNTER 365C

LFE BOUNTY 3118Z

LFE BS MARY 26A

OLF BLACK LEGEND T14

SPRINGCREEK BROOKE 12P

SPRINGCREEK DETROIT 32W

BW	205 DW	365 DW	CE	BWT	WWT	YWT	Milk	MCE	MWWT
102	848	1346	6.6	3.7	65.5	95.7	23.5	3.3	56.3

833F is smooth made, deep sided and correct. He is sired by Bounty Hunter who is known for his calving ease. 833F is the natural calf off of the 32W donor. Homo polled. Homo black.

SVS
37

Sunny Valley
FREEDOM 22F

Homo Pld Fullblood Bull WLLS 22F
CA-P1233870 7 Jan 2018

ANCHOR "T" RUSTY 59G
STARWEST POL BLUEPRINT
PHS HOMOZYGOUS XCEPTIONAL
ANCHOR D VIPER 103W
SUNNY VALLEY TRINITY 53Z
SUNNY VALLEY TRINITY 70T

For the third straight year our feature Fullblood is a Blueprint off the great trinity 53Z cow. Freedom displays tremendous depth of body, a great hair coat and is sound and complete from the ground up. When you're looking for a fullblood bull to advance your program you need to check out Freedom and his numbers. They are as well balanced as you will find on most fullbloods. Good calving, strong performance and great maternal. Freedom also tested Homo Polled, Non Dilutor.

\$25,000
ULTRA LIVESTOCK



BW	205 DW	365 DW	CE	BWT	WWT	YWT	Milk	MCE	MWWT
96	861	1535	9.7	3.2	75.8	117.9	33.7	7.3	71.6



53Z - Dam



Full Brother

SVS
38

SVS Rust **BLUEPRINT 809F**

Horned Fullblood Bull TLAS 809F CA-1235800 4 Jan 2018

STARWEST POL BLUEPRINT
WCC WELLS' ZAVIERA 23Z

ANCHOR "T" RUSTY 59G
PHS HOMOZYGOUS XCEPTIONAL
PHS X-PANSION
PHS WISH UPON A STAR 18W

BW	205 DW	365 DW	CE	BWT	WWT	YWT	Milk	MCE	MWWT
96	826	1444	10.3	4	73.8	112.7	33.8	8.4	70.7

809F is a dark red, deep sided and will add pounds to a set of calves. His mother is a big bodied performance female that is a great bull producer. 809F is also a non-dilutor which means he can be bred to black cows and you will not get grey calves. You can simply not go wrong adding a Blueprint son to your herd bull line up. Non-dilutor.

\$9,000
SUNBERRY VALLEY RANCH



SVS
39

SVS **BLUEPRINT 819F**

Scurred Fullblood Bull TLAS 819F CA-S1235874 8 Jan 2018

STARWEST POL BLUEPRINT
MRL MISS 3351A

ANCHOR "T" RUSTY 59G
PHS HOMOZYGOUS XCEPTIONAL
LFE JUSTIFIED 7328X
MRL MISS 499X

BW	205 DW	365 DW	CE	BWT	WWT	YWT	Milk	MCE	MWWT
87	846	1406	11.9	1.9	73.8	108.4	30.7	8.6	67.6

819F is a dark red beef bull that hit the ground running at just 87lbs. Then to have an 800lb weaning and 1400lb yearling weight is exactly what we strive to do. His EPD's are exceptional, ranking in the top 30% in each category. Blueprint has done an exceptional job here and all around the industry. His daughters are making excellent young cows and his sons have been really well accepted. We really like this long, stout, good footed bull and think you will too. Non-dilutor.

\$9,500
DARRYL CRAIK & ANNA WELSH





SVS 40 Sunny Valley BRAVO 18F

Horned Fullblood Bull ALLS 18F CA-1233866 7 Jan 2018

CHAMPS BRAVO

CHAMPS ROMANO
VIRGINIA POLL BARBI SUE
SOUTHSEVEN MR ADONIS 96Z
SUNNY VALLEY BECKY 57A

SUNNY VALLEY BECKY 42D

BW	205 DW	365 DW	CE	BWT	WWT	YWT	Milk	MCE	MWWT
92	814	1419	11.5	0.5	55.4	77.4	33.1	7.7	60.8

If you are looking for a bull to produce replacement females 18F will work. The Bravo daughters are heavy milking easy doing cows. 18F's dam is from our Becky cow family. She is a smaller framed cow with a great udder. I wish I had taken a picture of her with her big stout bull calf at side last summer. It was impressive weaning off well over 60% of her bodyweight.



SVS 41 Sunny Valley BRAVO 53F

Horned Fullblood Bull WLLS 53F CA-1234063 17 Jan 2018

CHAMPS BRAVO

CHAMPS ROMANO
VIRGINIA POLL BARBI SUE
BAR 5 SA HARRACH 801P
SUNNY VALLEY WENDY 44Y

SUNNY VALLEY WENDY 22B

BW	205 DW	365 DW	CE	BWT	WWT	YWT	Milk	MCE	MWWT
104	806	1411	9.6	2.1	67.5	94.3	28.8	8.2	62.6

Another real good dark red Bravo son that comes from our Wendy cow family. We have several daughters and granddaughters of 44Y in our herd and they continue to produce some of our best year after year. 22B has developed into an impressive looking cow with a great udder. A full brother to 53F was popular in our 2017 sale where he sold to Westman Farms and Mark Land & Cattle. A Blueprint son of 22B sold in 2018 to Derek Kolla.



SVS 42 Sunny Valley FESTUS 87F

Horned Fullblood Bull WLLS 87F CA-1234241 2 Feb 2018

SOUTHSEVEN MR ADONIS 96Z
KUNTZ DETERMINED 9D
KUNTZ MISS MOSES 03X
STARWEST POL BLUEPRINT
SUNNY VALLEY WENDY 17D
SUNNY VALLEY WENDY 44Y

Festus is a real good Determined son that comes in a moderate frame and is super sound in his make-up. His dam is a Blueprint daughter from our Wendy cow family. As more of these Blueprint daughters come into production we are more and more impressed with them. They are super attractive, beefy females that have very good udders. They are really the ideal beef cow moderate and productive. 17D is not just the first one she is also one of the best. If you are looking for a fullblood bull for the heifer pen have a close look at Festus. And remember to keep all the daughters.

BW	205 DW	365 DW	CE	BWT	WWT	YWT	Milk	MCE	MWWT
90	841	1446	11.8	1.2	60.2	89.3	34	7.4	64.1

SVS
43

Sunny Valley
DETER 83F

Horned Fullblood Bull WLLS 83F
CA-1234095 30 Jan 2018

SOUTHSEVEN MR ADONIS 96Z
KUNTZ DETERMINED 9D
KUNTZ MISS MOSES 03X
CHAMPS BRAVO
SUNNY VALLEY CRYSTAL 14C
SOUTH SEVEN MISS 58X

Deter is one of the fullblood bulls that will catch your eye sale day. He is a bull that has that extra stretch and frame to really add pounds to a calf crop. Check out his performance numbers. He posted an adjusted weaning weight of 935 lbs. and was number one in his group. He then went on to a 1533 adjusted 365 day weight. Now for the best part, his dam is one of only two daughters of 58X the dam of Sunny Valley Dakota 9Z. Remember those Blueprint daughters I was bragging about. Well Deter's dam 14C has an awesome one that just calved. A strong cow family backs 83F.

\$9,000

AUSTIN VOLLMAN



BW	205 DW	365 DW	CE	BWT	WWT	YWT	Milk	MCE	MWWT
97	935	1533	9.5	2.4	70	104.1	35.9	6.2	70.9

Kuntz Determined

SVS
44

SVS Rust DETERMINED 858F

Horned Fullblood Bull TLAS 858F CA-1235926 26 Jan 2018

KUNTZ DETERMINED 9D

FGAF KANANASKIS 947Z

SOUTHSEVEN MR ADONIS 96Z
KUNTZ MISS MOSES 03X
DOUBLE BAR D SPITFIRE 20X
JB CDN KANANASKIS 4019

BW	205 DW	365 DW	CE	BWT	WWT	YWT	Milk	MCE	MWWT
99	804	1346	5	4.3	66.1	98.1	31.1	4.4	64.2

858F is built like a brick and will have a lot of friend's sale day. If you like your bulls heavy muscled, big topped and super stout have a look at this guy! His mother is pretty darn good too, a former high seller out of Ferme Gagnon, that is perfect uddered. She is a tank that is very impressive. Just imagine a set of steers sired by 858F, they will push down the scale! And with his pedigree full of maternal power his heifers will be awesome too. Diluter.

\$6,500

JEFF FITZSIMMONS



SVS
45

Sunny Valley DAKOTA 6F

Polled Fullblood Bull WLLS 6F CA-PI233579 2 Jan 2018

SUNNY VALLEY DAKOTA 9Z

SUNNY VALLEY WENDY 44Y

ANCHOR D VIPER 103W
SOUTH SEVEN MISS 58X
SUNNY VALLEY SARGENT 24S
SUNNY VALLEY WENDY 25W

BW	205 DW	365 DW	CE	BWT	WWT	YWT	Milk	MCE	MWWT
95	837	1379	5.5	1.4	62.9	90.8	33.2	3.8	64.7

One of the most attractive, eye catching bulls in the pen. 6F has had that herdsire look from just a few days old. His dam is the Wendy 44Y cow that has produced mostly females until 6F came along. Two of her daughters have bulls in the sale. 6F is smooth polled. Tested Hetro Polled and carries the dilutor gene.

OUT OF SALE





SVS 46 Sunny Valley **SARA 42F**
 Polled Purebred Heifer WLLS 42F CA-PG1233952 14 Jan 2018

SVS BROOKS 669D MRL RED WHISKEY 101B
 SVS RED SARA 92X
 SVS SCOUT 18A
 SUNNY VALLEY SARA 11C SUNNY VALLEY SARA 28S

BW	205 DW	365 DW	CE	BWT	WWT	YWT	Milk	MCE	MWWT
86	682		9.3	2.6	65	96.2	26.6	6.4	59.1

One of the few Brooks heifers that we are going to part with. The Brooks progeny are very impressive both bulls and females and we are sure excited to see what they bring to the industry. Sara is a long bodied stylish heifer that comes from a moderate easy doing Scout 18A three year old with a great udder.



SVS 47 Sunny Valley **SASSY 47F**
 Polled Purebred Heifer WLLS 47F CA-PG1233965 16 Jan 2018

IPU RED ZONE 149D IPU RED ZONE 16A
 IPU MS. TUBEROSE 287Z
 KUNTZ SUPER DUTY 4Y
 SUNNY VALLEY SASSY 31B HAAS RANCH U102

BW	205 DW	365 DW	CE	BWT	WWT	YWT	Milk	MCE	MWWT
78	685		4	4.3	71.9	106.6	22.6	2.3	58.6

Sassy is a heifer that I really like that way she is put together. She has a big barreled, stout body but still maintains a very trim attractive front end. Sassy was a twin to another heifer and comes from a very good Super Duty dam that has a great future.



SVS 48 Sunny Valley **ELLE 76F**
 Polled Purebred Heifer WLLS 76F CA-PG1234090 25 Jan 2018

BGS/BM CAPTAIN SCREAM 63D SVS CAPTAIN MORGAN 11Z
 RF SCREAM 215Z
 SVS RED HOT 6X
 SUNNY VALLEY BELLE 8B DOUBLE BAR D LILI 219W

BW	205 DW	365 DW	CE	BWT	WWT	YWT	Milk	MCE	MWWT
110	761		1.3	7.3	87.7	132.5	19.5	-1.3	63.4

Belle is a real stout, easy doing daughter of the immortal Captain Scream. The Captain Scream daughters appear to have what it takes to make productive cows.



SVS 49 Sunny Valley **RHEA 94F**
 Horned Fullblood Heifer WLLS 94F CA-1234248 11 Feb 2018

KUNTZ DETERMINED 9D SOUTHSEVEN MR ADONIS 96Z
 KUNTZ MISS MOSES 03X
 CHAMPS BRAVO
 SUNNY VALLEY RHEA 22C SUNNY VALLEY RHEA 5U

BW	205 DW	365 DW	CE	BWT	WWT	YWT	Milk	MCE	MWWT
89	720		8.5	3.2	68.7	101.5	33.2	7.1	67.6

94F is just a mid-February heifer that comes from our Rhea cow family. They are known for having very good udders. 94F was not very cooperative on picture day as you can see but don't overlook her because of it. She will make a no nonsense cow that will do the job year after year.

SVS
50

SVS Rust
JANE 857F

Polled Fullblood Heifer TLAS 857F
CA-P1235924 26 Jan 2018

ANCHOR D VIPER 103W
SUNNY VALLEY DAKOTA 9Z
SOUTH SEVEN MISS 58X
DOUBLE BAR D ROLEX 267X
PHS AMAZING JANE 232A
VIRGINIAS JANE WEST

857F is a smooth polled, 100% Fleckvieh female that will catch your eye sale day. She has a stacked pedigree with her mother being a maternal sister to the great FGAF French Attack bull. 232A is a moderate, complete made cow with a beautiful udder. A maternal sister sold in last year's sale to Mud Butte Simmentals.



TLAS 760E - maternal sister



BW	205 DW	365 DW	CE	BWT	WWT	YWT	Milk	MCE	MWWT
98	729		1.3	5.6	67.2	99.7	32.4	0.6	66

SVS
51

SVS MISS
SADIE 821F

Homo Pld Purebred Heifer TLAS 821F
CA-BPG1235876 10 Jan 2018

NCB COBRA 47Y
MADER WALK THIS WAY 224B
MADER P IRON SUGAR 7X
COME AS U R RED ROCKET
RUST MISS 501C
TNT MISS SADIE M68

Here is an awesome Walk This Way daughter from a tremendous cow family. Her grandmother, M68, is the mother of TNT Top Gun. We have calved out a few Walk This Way daughters and are really liking them. Great mothers that are easy calving with very nice udders. They will be a big part of our program moving forward. Homo polled. Hetero black.



TLAS 761E - paternal sister



BW	205 DW	365 DW	CE	BWT	WWT	YWT	Milk	MCE	MWWT
86	719		5.5	3.8	84.3	129.4	19.2	2.6	61.4

\$4,750

RKT SIMMENTALS



BW	205 DW	365 DW	CE	BWT	WWT	YWT	Milk	MCE	MWWT
90	777		7.1	4	79.8	121.1	21.3	4.1	61.2

SVS **52**

SVS
EILEEN 825F

Homo Pld Purebred Heifer TLAS 825F
CA-BPG1235880 11 Jan 2018

LFE BOUNTY 3118Z
WLB BOUNTY HUNTER 365C
LFE BS MARY 26A
SVS CAPTAIN MORGAN IIZ
SVS EILEEN 625D
DESTINY DREAM EILEEN

Cow families are very important to us and 825F comes from one of our best. The Eileen's are no miss females that are easy to look at. 825F is super hairy, big ribbed and attractive. She is worth your consideration. Homo polled. Homo black.



TLAS 630D - full sister to dam

\$3,000

REGAN SCHLACTER



SVS **53**

SVS
RED SATIN 806F

Homo Pld Purebred Heifer TLAS 806F CA-PG1235794 3 Jan 2018

IPU RED DEPUTY 25C
SVS RED SATIN 662D

KUNTZ SHERIFF 8A
IPU 56U MS. RED LINER 81A
SVS AVENGER 425B
SVS RED SATIN 38Y

BW	205 DW	365 DW	CE	BWT	WWT	YWT	Milk	MCE	MWWT
86	725		7.1	3.7	79.1	120.2	22.2	4.5	61.8

806F is a smooth made Deputy daughter that we like a lot. We have used Deputy on our heifers for a couple years now and are really happy with how he calves and the quality he produces. The Deputy sons were a very popular sire group in last year's sale. Homo polled.

\$3,500

DEEG SIMMENTALS



SVS **54**

SVS
RED SARA 845F

Homo Pld Purebred Heifer TLAS 845F CA-PG1235899 16 Jan 2018

SPRINGCREEK BLUE CHIP 9D
SVS RED SARA 106A

SPRINGCREEK LINER 56U
SPRINGCREEK TARA 111R
ACS EVERREADY 970W
3D MISS SARA 158U

BW	205 DW	365 DW	CE	BWT	WWT	YWT	Milk	MCE	MWWT
93	712		4.7	3.9	74.1	111.4	28.7	2.9	65.8

845F is a true performance female. Sired by Blue Chip who is a Liner 56U son she should be very maternal. Her mother comes from the Sara cow family and is a maternal sister to our 92X donor. Look for this big footed, complete made female to be a herd bull producer. Homo polled.



Simmental Spring 2019 Breed Average EPD's:

CE	BW	WWT	YWT	Milk	MCE	MWWT
6.6	3.4	69.3	102.2	25.2	4.1	60.2

Win a \$2000 Sale Credit

Purchase a bull from any current Saskatchewan member, and when the registration papers are transferred you are entered to win a \$2000 sale credit! The draw will be made at the SSA annual general meeting in July and the lucky winner will have one year to use the credit at any public auction or private sale on bulls or females purchased from any current Saskatchewan member.

Terms & Conditions

TERMS – The terms of the sale are cash or cheque payable at par at sale location unless satisfactory credit arrangements have been made prior to the sale. The right of property shall not pass until after settlement is made. Sunny Valley Simmental reserves the right to require a certified cheque as settlement before releasing any sale cattle. Should the purchaser fail to settle for his purchase Sunny Valley Simmental reserveS full power to resell the animal to the best advantage either publicly or privately, without further notice. Any loss arising from such resale together with keep and all other expenses shall be payable by the defaulter. All settlements must be made with the clerks of the sale before any cattle will be released. Sunny Valley Simmental and sales staff have the right to refuse bids from anyone who has a previous record of default in payment and who has not made prior credit arrangements, prior to the sale with Sunny Valley Simmental.

BID-Every animal consigned to the sale must be sold by auction. No by-bidding will be permitted. Each animal will be sold to the highest bidder.

DISPUTES- In case of disputes, bidding will be reopened between the parties involved. If no further bid is made the buyer will be the person from whom the auctioneer accepted the last bid. The auctioneer's decision in such matters will be final.

PURCHASER'S RISK- Each animal becomes the risk of the purchaser as soon as sold.

ANNOUNCEMENTS from the auction block will take precedence over printed matter in the catalogue. Buyers are therefore cautioned to pay attention to any such announcements.

CERTIFICATE OF REGISTRY- The proper Registration or Recordation paper, as the case may be, will be duly transferred and furnished to the buyer for each animal after the settlement has been made.

SHIPPING- Assistance will be given in making shipment after the sale but no risk is assumed by the Seller. Purchasers are requested to furnish shipping instructions when making settlement.

GUARANTEE- All animals will carry standard breeding guarantee as specified by the Canadian Simmental Association. At no time shall the seller's liability exceed the purchased price of the animal.

EXCEPTION TO GUARANTEE – In cases where the animal is subjected to any hormonal or surgical reproduction techniques after the sale, the guarantee shall be null and void. In the cases of bulls, they are guaranteed to breed naturally according to the Canadian Simmental Association Guarantee but no guarantee is given that semen from any bull will freeze.

HEALTH – All animals will have passed the required tests as determined by Agriculture Canada at sale location. It is the buyer's responsibility to determine health requirements for importing any animal into his province or state.

ACCIDENTS- Although every precaution will be taken to protect the safety and comfort of buyers, neither the consignors or any Sales Staff or Association assumes any responsibility in this matter and disclaims any liability legal or otherwise in the event of accident or loss of property.

RIGHTS AND OBLIGATIONS – The above terms and conditions of the sale shall constitute a contract between the buyer and the seller and be equally binding to both. Resale of animals following purchase in this sale shall constitute a separate transaction and the rights and obligations of the two parties connected thereto are not covered by the terms and conditions of this sale.

PICTURES- By attending our sale you are giving your consent for your picture to be taken and used for promotional or advertising purposes only by Sunny Valley Simmental. If you wish to not have your picture used please advise us in writing immediately after the sale.



Sunny Valley Simmentals
Box 115
Hanley, SK S0G 2E0



RETURN POSTAGE GUARANTEED
PORT DE RETOUR GARANTI

Thank You

to those who supported our program in 2018

Blairswest Land & Cattle
Kolla Land & Cattle
Ben Loewen
Hoegl Livestock
Jeff Fitzsimmons
Diamond K Cattle Co.
Wally LeClare
Big Valley Farms
Grant Miller
D&D Cattle Co
R&J Farms
Dana Johns
Sunnyside Simmentals
Scott Clements
Scott Gehlen
Lost River Farming
Werstroh Farms Ltd
Pat Erickson
Bata Bros
Mat Danychuk
Rod Dale
Janzen Ranches

Glen Michayluk
Hard Luck Farms
Travis Rathgeber
Barber Land & Cattle
Dale Laturnas
Burge Barber
Hoffus Stock Farms
Brent O'Brien
Morgan Ranch
Regan Schlacter
Peter Hamm
Grona Farms
Gerry Wiens
Blairs.Ag Cattle Co
Shaun Stadnyk
Riley Dueker
Kinder Farms
Rodney Reidt
TJ Farms
Mud Butte Simmentals
LaBatte Simmentals
Circle 7

Northern Light Simmentals
Arrow Creek Simmentals
Tim McVicar
Rusylvia Cattle Co
Tri-K
Packett Bros
Libke Ranch
Deer Range Farm
Westman Farms
W2 Land & Cattle
KT Ranch
Harvie Crest
Anchor Lazy U
Deeg Simmentals
McIntosh Livestock
Wilson Stock Farms
Green Valley Ranch
Muirhead Cattle Co
Westway Farms
WJ Simmentals
Prairie Sky

Please bring this catalog with you to the sale.

Thank you for attending the sale.