



ON THE FARM - FORESTBURG, AB - 1:00 PM

**TER-RON**

**03.21.2019**

*Bull & Select Female Sale*

# **Sale Results**

**35 ANGUS YEARLING BULLS AVERAGED \$9,129**

**2 ANGUS TWO YEAR OLD BULLS AVERAGED \$5,000**

**7 SIMMENTAL YEARLING BULLS AVERAGED \$3,786**

**1 SIMMENTAL TWO YEAR OLD BULLS AVERAGED \$7,000**

**17 OPEN PUREBRED HEIFERS AVERAGED \$4,397**





**2018  
High Selling  
Bulls**

**Red Ter-Ron Venture 67E  
Adair Angus, Wolseley SK**



**Red Ter-Ron Electra 61E  
Blairs.Ag, Lanigan SK**



**2018  
High Selling  
Heifer**

**Red Ter-Ron Misty 141E  
Cactus Coulee Ranch - Jenner AB**

✓ All bulls will be  
**SEMEN TESTED**  
and vet inspected.

✓ **SALE DAY WEIGHTS** and  
**SCROTAL MEASUREMENTS**  
will be provided sale day.

**SALE VIDEOS**  
[www.ter-ronfarms.com](http://www.ter-ronfarms.com)  
OR [cattlevids.ca](http://cattlevids.ca)

## Calving Ease Legend

Calving Ease is often related to birth weight of a bull. This is partly true but there are other factors that influence calving ease. The dam and her management are at least 50% of calving ease. Also, the consistency of the birth weights of the sire and dam should be considered. Nutrition, gestation and environment all influence birth weight. We have rated each bull in the sale based on the information we have.

- \*\*\* Should produce minimal problems when bred to moderate size first calf heifers
- \*\* Recommend for second calvers or smaller framed cows 1100 lbs to 1300 lbs
- \* Recommend for mature cows 1400 lbs plus

## Delivery Options

- A. If you wish you may take your cattle home sale day or within a week and receive a \$100 discount per purchase.
- B. Bulls and Females will be delivered free of charge up to 250 miles, further at cost. Delivery usually commences 2 -3 weeks after sale.
- C. Bulls may be kept at Ter-Ron free of charge until May 1, after that, \$3.00 per day will be charged and animals must be picked up by the purchaser.

**\*\*\*\*All bulls staying at the farm must be insured  
by the purchaser - see page 4 for insurance.**





## *Bull & Select Female Sale*

**Thursday, March 21, 2019 - 1:00 p.m.**

**at Ter-Ron Farms - Forestburg, AB**

(3 miles South of Forestburg on RR 152 - map on page 4)

### **Sale Staff**

#### **Auctioneer**

Ryan Dorran  
403.507.6483

#### **Ringmen**

Nate Marin - 306.869.7130  
Bryon Wolters - 780.581.8396

#### **Consultant**

Roger Peters - Peterosa Exports - 403.828.9815

### **SALE DAY PHONE**

Please Call Terry or Rob's Cell phone

*Please join us for lunch at 11:30 a.m.  
and stay for hospitality after the sale!*

## **Can't make it to the sale?** **Internet Bidding Available.**

To view this sale visit [www.dlms.ca](http://www.dlms.ca), Fill out the registration form located under registration and sign-up for your free user account and select a username and password.

**BIDDERS** - To be approved as a bidder, Log in to [dlms.ca](http://dlms.ca) and click BUYER APPROVAL tab, select the sale you are interested in bidding at and click sign up.

For more information  
Call DLMS Reps:

Whitney Bosovich 780.991-3025

Mark Shologan 780.699.5082

**DLMS**  
[www.dlms.ca](http://www.dlms.ca)

*On Offer*

**53 - Angus Bulls**

**50 - Yearlings**

**3 - Two Year Olds**

**11 - Simmental Bulls**

**10 - Yearlings**

**1 - Two Year Old**

**17 - Angus Heifers**

### **TER-RON FARMS**

**Terry Adams**

**Res: 780.582.2109**

**Cell: 780.385.1189**

**Rob Adams**

**Res: 780.582.3720**

**Cell: 780.385.0849**

**Buyer Representatives**



**BOHRSON**  
**MARKETING SERVICES**

**Scott Bohrson**  
**403.370.3010**

**Taylor Richards**  
**306.821.4169**

**Darryl Snider**  
**780.385.5561**

**Matt Criddle**  
**306.539.6934**

### **Sight Unseen Purchase Guarantee**

If you are unable to attend our sale, we have a "Sight Unseen Purchase Plan". Under this program you will tell us about your needs and price and we will then have a buyer of your choice purchase the bull on your behalf. Upon delivery, if you are not satisfied, we still own the bull.





Ter-Ron Farms is world-wide respected for their high quality purebred program that is backed by one of the hardest working families in the industry. Their genetics have positively influenced the beef industry as they have produced many of the influential sires that have had lasting impacts in Canada and abroad. This family program is backed by the utmost amount of integrity that has put them at the very top of the industry to source elite cattle that will add profitability to your program.

This years bulls are extremely deep and powerful throughout and we are confident you'll be impressed when you view them. Their phenotype is what the industry is striving to produce and most importantly, they are backed by an impressive cowherd that is strong uddered, good footed and built for longevity and production. Whether it is a calving ease, performance or a mix of both that you are seeking; this set has options for the most critical of cattleman.

The Red Angus sires on offer are the heart of Ter-Ron Farms and are a set that need to be seen to truly appreciate to the fullest. The options run deep for commercial and purebred cattleman alike and there is many special ones in the offering that we feel can escalate the quality of the breed, the programs that incorporate them as they check off all the boxes of upcoming influential sires that will leave a positive, lasting impression. A select group of black bulls will be on offer with that same quality genetics backing them as the reds and they are high in quality. Terry's Simmental program has quickly advanced into a strong herd of highly productive, performance oriented bulls that are hard to fault. The Adams' have dug extremely deep into their replacement heifer pen to offer this group of open females. This could be their best set of females on offer and they are sure to advance any program with their strong phenotypes and depth of quality pedigrees.

The Adams' are salt of the earth people that rise to the top of genuine individuals that we have the pleasure to work with every year. You can invest into this program with confidence that they have the very best genetics in the business to source and they back them 100% to ensure that you are a happy customer. We encourage you to visit with them on the offering and attend the sale but if you cant make it and need any assistance, feel free to contact any of our staff and we will represent your needs in a professional and confidential manner. We look forward to visiting with you in Forestburg to take in great cattle backed by first class hospitality.

**Scott Bohrsen**  
403.370.3010

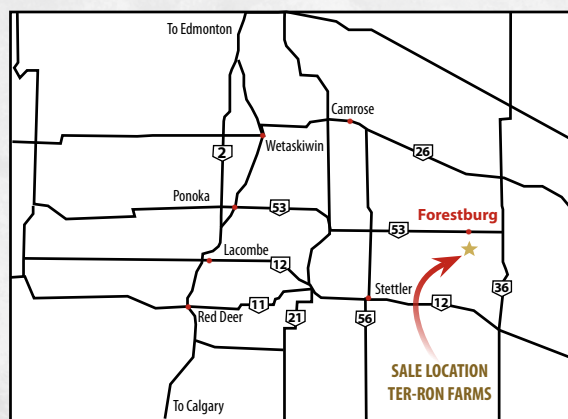
**Taylor Richards**  
306.821.4169

**Darryl Snider**  
780.385.5561

**Matt Criddle**  
306.539.6934

## Ter-Ron Farms - Forestburg, AB

3 miles South of Forestburg on RR 152



**Photographer**  
Grant Rolston Photography  
403.593.2217

### Canadian Farm Insurance Corp.

Agent Jill Wildman  
Ph: 780-305-1146

*All bulls staying at the farm must be  
insured by the purchaser.*

### Special Representatives

Trevor Welch – Canadian Angus Association President  
Mark Matejka – Canadian Red Angus Promotion Society  
Blake Morton – Alberta Angus Association President  
Brian Good – Canadian Angus Association Field Rep.

### Accommodations

Please do not hesitate to call Maureen Adams  
to assist you with accommodations.

**Stettler:** Super 8 - 403 742 3391  
Ramada - 403 742 6555

**Camrose:** Super 8 - 780 672 7303  
Ramada - 780 672 5220

A few rooms are available at Forestburg Motor Inn, please  
let Maureen know if you would like one of these.





Sharon & Terry

## Welcome

On behalf of everyone here at Ter-Ron, we would like to invite you to join us Thursday, March 21, for our 14th annual Bull and Select Female Sale.

You will notice that we are on our own this year and would like to thank Bill & Tracy Dietrich and their family for being such good sale partners in our previous sales. We

wish them the best of luck in their new venture.

We would like to sincerely thank our loyal customers, friends and neighbours for their continued support and trust in our program. Your interest is something we are very grateful for and we do not take it for granted. We work tirelessly to bring you a product that is suitable for the commercial cattleman and seed stock producer. Our focus has remained the same over the past years, to continually improve our product and genetics and to produce sound, easy fleshing, functional cattle that will have predictability influence on your breeding program.

We have a strong offering of bulls and heifers again this year. We are very proud of the consistency throughout the sale offering and we are confident they will meet your approval. The bulls will have a complete semen evaluation and the females are palpated before the sale. You can buy with confidence as we stand behind these cattle 100%.

We invite you to stop in anytime between now and March 21st to look over the bulls and heifers, or give Terry or Rob a call anytime to talk about the offering. If you cannot make the sale for some reason, we once again will be working with the Bohrson Marketing crew. They are familiar with the cattle, so we encourage you to call them if you would like. They are very professional so you can feel confident in their opinion. We also have Mark Shologan of DLMS once again if you prefer to bid online. Feel free to call Mark prior to the sale as well.

Thanks again to all that have supported our program, we really appreciate all of you!! So plan on joining us on Thursday, March 21, 2019, here at the farm at Forestburg for a hot beef lunch and refreshments before the sale. Also plan to stay for hospitality after the sale with visiting, refreshments, and a post sale lunch.

Sincerely,

Terry & Sharon Adams

Rob, Maureen, Halley, Keely & Kasey Adams



Kasey, Maureen, Rob, Keely & Halley

## Contact Us

**Terry**

Res: 780.582.2109

Cell: 780.385.1189

**Rob**

Res: 780.582.3720

Cell: 780.385.0849

Email: [smada@syban.net](mailto:smada@syban.net)

[www.ter-ronfarms.com](http://www.ter-ronfarms.com)





## RED U-2 RENOWN 193C

DUA 193C 1837648 January 22 2015  
BW: 82 lbs Adj 205: 759 lbs Adj 365: 1402 lbs

RED U-2 RECON 192Y  
**RED U-2 RECKONING 149A**  
RED U-2 ANEXA 271Y

RED U-2 DYNAMO 7021T  
**RED U-2 ENVIOUS 147X**  
RED U-2 ENVIOUS 216M

RED BRYLOR WEST JET 69W  
RED U-2 LARKABA 8133U  
RED HOWE MAGNUM 169W  
RED U-2 ANEXA 333N  
RED FLYING K DYNAMO 67K  
RED U-2 ANEXA 549R  
ACN DMM DYNASTY 15J  
RED ENVIOUS 19U OF EAST FORK

**BW: 5.8 WW: 43 YW: 60 Milk: 21 Total Mat: 43**

- \$75000 high selling bull out of the U2 Ranch Sale, purchased with Canadian Sires in 2016
- Renown's sons are full of muscle, thickness, soundness, bone, foot size, and easy fleshing ability
- We feel that Renown may have out bred himself on a few of the sons in the sale
- We are calving the first daughters now. They are moderate, broody, solid footed, and have nice udder attachment
- Owned with Canadian Sires and U2 Ranch

## RED U-2 REVERENCE 198C

DUA 198C 1837764 January 22 2015  
BW: 81 lbs Adj 205: 778 lbs Adj 365: 1447 lbs

RED U-2 RECON 192Y  
**RED U-2 RECKONING 149A**  
RED U-2 ANEXA 271Y

RED BDL UPROAR 124U  
**RED U-2 LAKOTA 427Y**  
RED FLYING K LAKOTA 104U

RED BRYLOR WEST JET 69W  
RED U-2 LARKABA 8133U  
RED HOWE MAGNUM 169W  
RED U-2 ANEXA 333N  
RED GOLD-BAR STONE COLD 115S  
RED TOWAW DOLL 100K  
RED U-2 BIG LEAGUE 544R  
RED FLYING K LAKOTA 68N

**BW: -0.4 WW: 34 YW: 64 Milk: 26 Total Mat: 43**

- Offspring have the same attributes with extra depth, muscle shape, hair coat, and plenty of style
- Dark in colour, on a real solid foot, in a proud athletic package
- Daughters are everything we hoped for



## RED TER-RON BAZINGA 13B

RPAH 13B 1811453 January 08 2014  
BW: 83 lbs Adj 205: 780 lbs Adj 365: 1176 lbs

HF TIGER 5T  
**TER-RON PARK PLACE 18Y**  
RED TER-RON GOLDIE 240L

RED TER-RON TOUCHDOWN 8S  
**RED TER-RON AMBER 46W**  
RED TER-RON AMBER 28P

HF KODIAK 5R  
HF ECHO 84R  
RED LAZY MC DIVIDE 8J  
RED TER-RON GOLDIE 240J  
RED SHODEREE DESTINY 114P  
RED TER-RON STARLET 8K  
RED TER-RON MAMBO 28K  
RED EV AMBER 28H

**BW: -1.5 WW: 41 YW: 50 Milk: 23 Total Mat: 44**

- High selling bull in our 2015 sale to Goad Family Farm, Corona Creek and David Mohr
- Bazinga is wide made, big topped, huge barreled and consistently sires early gestation cattle, a trait that is passed down by his sire, Park Place, and grand sire, Tiger
- The bulls sired by Bazinga are "cookie cutter" similar, their consistency is amazing
- Bazinga is deceased, and semen is limited, so these genetics are hard to come by
- Dam is also the mother to the Continental bull, who was the high selling bull in 2017 to Circle G at Lacombe. The Continentals are some of the features in Garth Cutler's sale this year.







## RED COMBEST JUGGERNAUT 1613D

CLFX 1613D 1948707 February 27 2016 CE  
BW: 86 lbs Adj 205: 952 lbs Adj 365: 1316 lbs

RED WHEEL ALLIANCE 22U  
**RED BAR-E-L ANTHEM 46A**  
RED BAR-E-L FRADO 209U

RED YY RED KNIGHT 640F  
**RED BAR-E-L MEG 85N**  
RED BAR-E-L MEG 035G

RED NORTHLINE ATLANTIC CITY  
RED WHEEL AUBURN 2K  
RED SSS BOOM TOWN 260D  
RED BAR-E-L SCARLET 193S  
RED YY 23L TOPPER 408D  
RED TOP GOLDIE 40U  
RED GLESBAR PATRIOT 20D  
RED CUMNOCK MEG 776X

**BW: 4.5 WW: 57 YW: 91 Milk: 19 Total Mat: 48**

- Juggernaut was purchased as the high selling bull in the Combest Red Angus Bull Sale with TNF Angus
- Massive, super soft made, square hipped, big footed, hairy bull that looks great from all angles
- Sired by the Anthem bull and his dam may be the best red cow Bar E-L ever had – Meg 85W
- Unmatched performance, and maybe the most consistent bull we have ever used
- Did an excellent job siring both sexes
- Owned with TNF Red Angus and Combest Red Angus

**Note EPD's cannot be compared between  
Angus and Simmental Cattle**

## SIMMENTAL

## WLB GO DADDY 52Z 368D

WLB 368D BPG1171897 February 2 2016  
BW: 89 lbs Adj 205: 766 lbs Adj 365: 1454 lbs

WHEATLAND PREDATOR 922W  
**MRL EL TIGRE 52Z**  
MRL MISS 836W

HARVIE JDF WALLBANGER111X  
**BLACKSAND TESS 56A**  
SPRINGCREEK BLK TESS 25T

WHEATLAND BULL 680S  
WHEATLAND LADY 752 T  
MRL BLACK BEAR 79S  
MRL MISS 828S  
SHS ENTICER P1B  
JDF PEPSI 61U  
SPRINGCREEK TANK 63P  
SPRINGCREEK LINNE 71P

**BW: 2 WW: 74 YW: 110 Milk: 18 Total Mat: 55**

- Lead off bull in the 2017 WLB Sale that was purchased jointly with Circle G
- Go Daddy is moderate framed with a massive rib shape, extra depth of body, super sound and structurally correct
- First set of sons are very consistent and the daughters look very impressive
- Homo Polled and Hetero Black
- Owned with Circle G Simmentals & Angus





**NO SALE**



**2F**

**RED TER-RON  
FUME 2F**

RPAH 2F 2037392 January 06 2018 CE \*  
BW: 92 lbs Adj 205: 798 lbs Adj 365: 1371 lbs

RED BAR-E-L ANTHEM 46A  
**RED COMBEST JUGGERNAUT 1613D**  
RED BAR-E-L MEG 85N

TER-RON PARK PLACE 18Y  
**TER-RON MISS CEE 22B**  
RED TER-RON MISS CEE 11Z

RED WHEEL ALLIANCE 22U  
RED BAR-E-L FRADO 209U  
RED YY RED KNIGHT 640F  
RED BAR-E-L MEG 035G  
HF TIGER 5T  
RED TER-RON GOLDIE 240L  
RED NSFR GRETZKY W9  
RED SIX MILE MISS CEE 274P

**BW: 2.8 WW: 52 YW: 83 Milk: 21 Total Mat: 49**

- Fume is the first Juggernaut son out of a very strong sire group
- Huge bodied, big bellied, super hairy and all this on a big, dark foot
- 2F will add pay weight to your calf crop
- Dam is a great producing, black hided Park Place cow

GRP

**TER-RON  
MOTIVE 4F**

**4F**

HFX 4F 2037313 January 09 2018 CE \*\*\*  
BW: 78 lbs Adj 205: 708 lbs Adj 365: 1217 lbs

HF KODIAK 5R  
**SOO LINE MOTIVE 9016**  
TLA BEAUTY 5R

RED SHODEREE DESTINY 114P  
**RED TER-RON CRESTA 145U**  
RED TER-RON CRESTA 204P

SANDY BAR ADVANTAGE 43M  
WILBAR RUBY 955N  
RR 7407 RAINMAKER 2154  
TERRLENE BEAUTY 35F  
RED SSS STORM 87M  
RED SHODEREE LEADING LADY 96K  
RED SVR EXPLOSION 23M  
RED TER-RON CRESTA 204M

**BW: -1.4 WW: 36 YW: 61 Milk: 16 Total Mat: 38**

- Low birth, black/red carrier son of the great Soo Line Motive bull
- If you're looking for a great heifer bull that will leave you daughters to drool over, 4F would be a great choice
- Dam is a designated Premier Dam with the Canadian Angus Association. Last year a son of 145U sold to long time customers, Prairie Hall Farms of Forestburg for \$10000

**OUT OF SALE**



GRP

**\$18,000**

**LONE STONE FARMS**



**5F**

**RED TER-RON  
FARLEY 5F**

HFX 5F 2037312 January 09 2018 CE \*\*  
BW: 79 lbs Adj 205: 712 lbs Adj 365: 1286 lbs

RED BAR-E-L ANTHEM 46A  
**RED COMBEST JUGGERNAUT 1613D**  
RED BAR-E-L MEG 85N

RED FLYING K JULIAN 72Y  
**RED TER-RON BOBBIE 42B**  
RED TER-RON BOBBIE 122X

RED WHEEL ALLIANCE 22U  
RED BAR-E-L FRADO 209U  
RED YY RED KNIGHT 640F  
RED BAR-E-L MEG 035G  
RED TONGUE RIVER JUBILATION  
RED FLYING K TAMMY 15W  
RED THAT'LL DO UNBELIEVABLE 6U  
RED TER-RON BOBBIE 93T

**BW: 1 WW: 36 YW: 63 Milk: 19 Total Mat: 37**

- Farley is a bull that will command a lot of attention come sale day
- Started out at 79 lbs and has as much depth, muscle shape, eye appeal, hair, & structural correctness as any bull in the sale
- Dam is a moderate framed Julian daughter that you wish you could have a whole herd of

GRP



# \$ 10,000 BLUE CREEK FARMS



9F

## RED TER-RON RINGER 9F

RPAH 9F 2052052

January 10 2018 CE \*

BW: 85 lbs Adj 205: 783 lbs

Adj 365: 1389 lbs

RED SIX MILE GAME FACE 164Y

RED SIX MILE TAURUS 519A

RED SIX MILE SHAWNEE 116T

**RED SIX MILE HIGH CALIBER 177C**

BLACK WHEEL ODYSSEY 117U

RED U6 ALANA 13X

RED U6 ALANA 65T

RED LAZY R C EL SENRO 405P

RED THAT'LL DO UNBELIEVABLE 6U

RED THAT'LL DO MISS 79N

**RED TER-RON AMBER 133Z**

RED TER-RON TOUCHDOWN 8S

RED TER-RON AMBER 46W

RED TER-RON AMBER 28P

**BW: 2.3 WW: 45 YW: 79 Milk: 22 Total Mat: 47**

- Ringer is a son of the \$115,000 Red Six Mile High Caliber bull that will be easy to spot on sale day
- Dark cherry red in colour, huge hiped, deep sided, long spined, and very stout
- Grand dam is the mother to the Continental bull that topped the sale 2 years ago and is now working at Circle G
- Dam is a cow that is becoming more of a favourite every year. Last year a son sold to Letniak's at Consort
- Ringer is definitely a bull that should be checked out

# \$ 6,500 WILDOR FARMS



7F

## RED TER-RON FRAZIER 7F

HFX 7F 2037315 January 10 2018 CE \*\*

BW: 72 lbs Adj 205: 744 lbs Adj 365: 1213 lbs

TER-RON PARK PLACE 18Y

**RED TER-RON BAZINGA 13B**

RED TER-RON AMBER 46W

RED GOLD-BAR NUFF SAID MM 110N

**RED DKF MISS NUFF 107R**

RED DKF MISS MAT 54K

HF TIGER 5T

RED TER-RON GOLDIE 240L

RED TER-RON TOUCHDOWN 8S

RED TER-RON AMBER 28P

RED LCC MR. MARBLING 1309K

RED LPC FLORESS HOB0 37G

RED HOWE MR MAT DDH 19F

RED DKF MISS RAB-STAR 54F

**BW: -2.8 WW: 22 YW: 21 Milk: 24 Total Mat: 38**

- Frazier is a long spined, deep ribbed Bazinga son that has an extra flair about him
- Started out at only 72 lbs, and we believe he could be used on heifers, with a -2.8 BW EPD
- Dam has been a super producer with 11 progeny, many have been sons that have sold through this sale



**\$ 18,000**  
**ADAIR ANGUS RANCH**



**10F**

**RED TER-RON  
ROSCO 10F**

HAL 10F 2042755  
January 11 2018 CE \*  
BW: 94 lbs Adj 205: 779 lbs  
Adj 365: 1297 lbs

HF TIGER 5T  
TER-RON PARK PLACE 18Y  
RED TER-RON GOLDIE 240L

**RED TER-RON BAZINGA 13B**  
RED TER-RON TOUCHDOWN 8S  
RED TER-RON AMBER 46W  
RED TER-RON AMBER 28P

RED TER-RON RELOAD 703T  
RED TER-RON REALDEAL 01W  
RED K ADAMS SAVANAH 11S  
**RED K ADAMS ZARIA 091Z**  
RED TER-RON PIRATE 135S  
RED K ADAMS UNDECIDED 291U  
RED K ADAMS SCARLETT 299S

**Retaining 1/3  
Semen Interest**



Reserve Champion Bull - Farmfair 2018



Red K Adams Zaria 091Z  
Dam of Lot 10F

**BW: 2.4 WW: 49 YW: 58 Milk: 22 Total Mat: 47**

- Rosco has been one of the more popular bulls of the fall
- He was bull futurity champion at Red Roundup, Reserve Champion Bull at Olds Fall Classic,
- Reserve Champion bull at Farm Fair, and Senior Bull Calf Champion at Canadian Western Agribition
- Rosco is a big middled bull, with lots of rib shape, super stout, and very well balanced on a super set of feet and legs, all with a dark cherry red colour.
- The best part of 10F is his mother – Red K Adams Zaria - Supreme Champion Female at Farm Fair International in 2016, and the mother to bulls such as Hot Shot, Shocker, and the Blockbuster bull that sold to Santiago Debernardi of Argentina and Blairs.Ag in last year's sale
- Rosco might be Zaria's best son yet



Picture taken in December



**\$ 6,000**  
**ANDY NIEDERER**



**13F**

**RED TER-RON  
KRYPTONITE 13F**

HFX 13F 2037316 January 11 2018 CE \*  
BW: 98 lbs Adj 205: 800 lbs Adj 365: 1382 lbs

RED BAR-E-L ANTHEM 46A  
**RED COMBEST JUGGERNAUT 1613D**  
RED BAR-E-L MEG 85N

RED LAZY MC KINGMAN 16W  
**RED TER-RON LAURYN 194Z**  
RED TER-RON LAURYN 018R

RED WHEEL ALLIANCE 22U  
RED BAR-E-L FRADO 209U  
RED YY RED KNIGHT 640F  
RED BAR-E-L MEG 035G  
RED RMJ REDMAN 1T  
RED LAZY MC MISS 67R  
RED TER-RON MAMBO 28K  
RED TER-RON LAURYN 018K

**BW: 4 WW: 46 YW: 74 Milk: 20 Total Mat: 44**

- High performing son of Juggernaut that really pushes down the scale
- Square topped, deep sided, stout made bull that has a lot of presence to him
- Mother is a super uddered, sound footed cow that is from the same cow family as the \$15000 Hustler bull that sold to Jensen Red Angus at Leader SK

**RED TER-RON  
FELIX 14F**

**14F**

HFX 14F 2037318 January 12 2018 CE \*\*  
BW: 79 lbs Adj 205: 795 lbs Adj 365: 1344 lbs

RED BAR-E-L ANTHEM 46A  
**RED COMBEST JUGGERNAUT 1613D**  
RED BAR-E-L MEG 85N

RED TER-RON WICKED 53Y  
**RED TER-RON REBECCA 52A**  
RED WILBAR REBECCA 305N

RED WHEEL ALLIANCE 22U  
RED BAR-E-L FRADO 209U  
RED YY RED KNIGHT 640F  
RED BAR-E-L MEG 035G  
RED TER-RON REALDEAL 01W  
RED TER-RON BOBBIE 93T  
RED SIX MILE KNOCKOUT 459K  
RED HEAD REBECCA 254J

**BW: 1.6 WW: 46 YW: 77 Milk: 20 Total Mat: 46**

- True Meat Wagon! Herd bull candidate that checks all the boxes to move your herd forward
- Lots of length, massive shape over his top and a real herd bull character with a tremendous hair coat
- Maternal sisters have sold to Jason Bragg in Texas, another to Sunberry Valley Ranch and a brother sold to long time customers Hadwin Cattle Co at Consort
- Phenotype & performance make Felix 14F a definite sale feature



**\$ 8,500**  
**KEVIN VAN SLYKE**

**\$ 5,500**  
**WILDOR FARMS**



**15F**

**RED TER-RON  
FINCH 15F**

HFX 15F 2037319 January 12 2018 CE \*\*\*  
BW: 62 lbs Adj 205: 618 lbs Adj 365: 1190 lbs

RED TER-RON PARKER 34A  
**RED TER-RON SANTANA 73C**  
RED TER-RON BRANDY 162Y

RED ROYAL K-C DUKE 08R  
**RED TER-RON MAGGIE 28Z**  
RED TER-RON MAGGIE 310N

RED TER-RON PARK PLACE 18Y  
RED TER-RON DIAMOND MIST 164Y  
RED U-2 BIG LEAGUE 544R  
RED TER-RON BRANDY 211M  
RED SPRING CREEK HI HO 8K  
RED ROYAL DUCHESS 08L  
RED TER-RON MAMBO 28K  
RED ALDER ABG HAWAMBA 10G

**BW: 0.6 WW: 34 YW: 58 Milk: 14 Total Mat: 31**

- Finch is a heifer bull prospect that is very smooth made, hairy, and long backed with lots of substance
- Dam is an easy keeping female with a balanced udder that seems to be a top producer every year
- We just calved out a full sister to 15F and udder quality is second to none!



# \$ 6,750 HADWIN CATTLE CO



**23F**

## RED TER-RON PROFIT 23F

RPAH 23F 2037396 January 14 2018 CE \*  
BW: 93 lbs Adj 205: 639 lbs Adj 365: 1229 lbs

RED BAR-E-L ANTHEM 46A  
**RED COMBEST JUGGERNAUT 1613D**  
RED BAR-E-L MEG 85N

RED FCC RAMBO 502  
**RED RUST MISS 329A**  
RED NSFR MTX W14

RED WHEEL ALLIANCE 22U  
RED BAR-E-L FRADO 209U  
RED YY RED KNIGHT 640F  
RED BAR-E-L MEG 035G  
RED CV FOUR TIMES  
COPPER LASS 2392  
RED SIX MILE SAKIC 832S  
RED LMG MTX 3032

**BW: 2.8 WW: 36 YW: 63 Milk: 17 Total Mat: 34**

- Profit 23F is a very good Juggernaut son that's thick, with lots of muscle shape and extra dimension
- Mother is an excellent uddered, ideal Angus cow that we got out of the Rust female sale in North Dakota a few years back

## TER-RON RESOURCE 25F

**25F**

HFX 25F 2037324 January 15 2018 CE \*\*  
BW: 70 lbs Adj 205: 810 lbs Adj 365: 1395 lbs

S A V RESOURCE 1441  
**MRLA 109D**  
RED MRLA MISS 345X

RED SIX MILE GAME FACE 164Y  
**RED TER-RON SAVANAH 115D**  
RED K ADAMS SAVANAH 11S

RITO 707 OF IDEAL 3407 707S  
S A V BLACKCAP MAY 4136  
RED SOO LINE MOMENTUM 7051  
RED MRLA MISS 269T  
RED VGW GAME PLAN 816  
RED SIX MILE LAKOTO 35W  
DMM FLEX 24E  
RED BRYLOR BRANDY 11C

**BW: 1.9 WW: 43 YW: 71 Milk: 19 Total Mat: 43**

- Deep ribbed, red carrier bull who is a grandson of the SAV Resource 1441 bull
- The 109D progeny are easy fleshing cattle with loads of substance and length of body
- 25F would be an excellent outcross choice to take your herd to a whole new level
- Very popular with visitors
- Only a 70 lb BW with lots of performance



**OUT OF SALE**

# \$ 6,750 KEN CROOKES



**26F**

## RED TER-RON FONZY 26F

HFX 26F 2037325 January 15 2018 CE \*  
BW: 85 lbs Adj 205: 783 lbs Adj 365: 1351 lbs

TER-RON PARK PLACE 18Y  
**RED TER-RON BAZINGA 13B**  
RED TER-RON AMBER 46W

RED TER-RON REALDEAL 01W  
**RED TER-RON REBECCA 123Y**  
RED WILBAR REBECCA 305N

HF TIGER 5T  
RED TER-RON GOLDIE 240L  
RED TER-RON TOUCHDOWN 8S  
RED TER-RON AMBER 28P  
RED TER-RON RELOAD 703T  
RED K ADAMS SAVANAH 11S  
RED SIX MILE KNOCKOUT 459K  
RED HEAD REBECCA 254J

**BW: 1 WW: 47 YW: 65 Milk: 22 Total Mat: 46**

- Another moderate birth bull with lots of performance
- Bazinga has been one of the most consistent bulls we have ever used
- Fonzy 26F is a very complete, well balanced bull that we think a lot of
- Mother has been a very consistent producer that has had sons going to Taschuk Farms and Prairie Hall Farms



# \$ 15,000 TRIPLE X RED ANGUS



**30F**

## RED TER-RON FACEOFF 30F

RPAH 30F 2037398 January 16 2018 CE \*\*  
BW: 80 lbs Adj 205: 742 lbs Adj 365: 1259 lbs

RED BAR-E-L ANTHEM 46A  
**RED COMBEST JUGGERNAUT 1613D**  
RED BAR-E-L MEG 85N

RED U-2 BIG LEAGUE 544R  
**RED TER-RON DIAMOND MIST 53X**  
RED TER-RON DIAMOND MIST 210U

RED WHEEL ALLIANCE 22U  
RED BAR-E-L FRADO 209U  
RED YY RED KNIGHT 640F  
RED BAR-E-L MEG 035G  
RED LCC MAJOR LEAGUE A502M  
RED U-2 ANEXA 09E  
RED MOOSE CREEK CIGAR 61S  
RED TER-RON DIAMOND MIST 290R

**BW: 0.9 WW: 46 YW: 67 Milk: 17 Total Mat: 41**

- Face Off 30F has been a favourite of ours with his dark cherry red colour, dark solid hoof structure, width of top, thickness, and overall balance
- Stemming from the Diamond Mist cow family that has been associated with raising "the great ones"
- Only a 80 lb birth weight with lots of performance
- You will want to keep every daughter out of this bull

**35F**

## RED TER-RON FULTON 35F

HFX 35F 2037328 January 17 2018 CE \*  
BW: 92 lbs Adj 205: 653 lbs Adj 365: 1253 lbs

RED U-2 RECKONING 149A  
**RED U-2 RENOWN 193C**  
RED U-2 ENVIOUS 147X

RED LAZY MC KINGMAN 16W  
**RED TER-RON BRANDY 171C**  
RED TER-RON BRANDY 58U

RED U-2 RECON 192Y  
RED U-2 ANEXA 271Y  
RED U-2 DYNAMO 7021T  
RED U-2 ENVIOUS 216M  
RED RMJ REDMAN 1T  
RED LAZY MC MISS 67R  
RED JD LANN EVOLUTION 119S  
RED TER-RON BRANDY 11P

**BW: 4 WW: 32 YW: 52 Milk: 16 Total Mat: 28**

- Moderate framed meat wagon that is typical of the Renown cattle
- Very complete in his make up, with extra thickness and length
- Maternally stacked being out of a very good uddered Brandy cow. The Brandy's are some of our best



**OUT OF SALE**



Red Ter-Ron Diamond Mist 26C - Miss World Angus 2017



**\$ 25,000**  
**BROOKLYN CATTLE CO**



**37F**

**RED TER-RON  
REVEREND 37F**

RPAH 37F 2037399

January 18 2018 CE \*\*\*

BW: 64 lbs Adj 205: 718 lbs

Adj 365: 1249 lbs

RED U-2 RECON 192Y

RED U-2 RECKONING 149A

RED U-2 ANEXA 271Y

**RED U-2 REVERENCE 198C**

RED BDL UPPOAR 124U

RED U-2 LAKOTA 427Y

RED FLYING K LAKOTA 104U

TER-RON PARK PLACE 18Y

RED TER-RON BAZINGA 13B

RED TER-RON AMBER 46W

**RED TER-RON ALYSA 50D**

RED HEARTLAND KNIGHT CHARM 11L

RED TER-RON ALYSA 33R

RED TER-RON ALYSA 33M

**BW: -1.5 WW: 32 YW: 51 Milk: 23 Total Mat: 40**

- One of the premier calving ease bulls of the whole offering
- Very smooth made, lots of thickness and width of top, in a dark cherry red colour with a very nice angus head
- Solid dark foot and maternally stacked
- Dam is a first calf Bazinga daughter, that is a sister to the Semex calving ease specialist, Monopoly



*Red Ter-Ron Alysa 33R  
Grand Dam of Lot 37F*

**OUT OF SALE**



**40F**

**TER-RON  
MOTIVE 40F**

HFX 40F 2037333 January 19 2018 CE \*\*

BW: 88 lbs Adj 205: 778 lbs Adj 365: 1320 lbs

HF KODIAK 5R

**500 LINE MOTIVE 9016**

TIA BEAUTY 5R

RED HOWE MR MATRIX 7L

**RED TER-RON PAIGE 609R**

RED TER-RON FREYR 509K

SANDY BAR ADVANTAGE 43M

WILBAR RUBY 955N

RR 7407 RAINMAKER 2154

TERRLENE BEAUTY 35F

RED HOWE MR MAT DDH 19F

RED CRANSTON TINKERBELL 1J

RED SSS BOOM TOWN 260D

RED 77 MISS FREYR 509E

**BW: 2.1 WW: 35 YW: 52 Milk: 23 Total Mat: 41**

- Another calving ease 9016 Motive son that has the smoothness of shoulder and overall balance that will produce daughters you will drool over
- Dam has had 12 progeny and is still going strong and is still as sound as ever



**OUT OF SALE**



**41F**

**RED TER-RON  
BROKER 41F**

HFX 41F 2037331 January 19 2018 CE \*  
BW: 86 lbs Adj 205: 726 lbs Adj 365: 1147 lbs

RED U-2 RECKONING 149A  
**RED U-2 RENOWN 193C**  
RED U-2 ENVIOUS 147X

RED ROYAL K-C DUKE 08R  
**RED TER-RON HEATHER 31Z**  
RED HIPS HEATHER 61U

RED U-2 RECON 192Y  
RED U-2 ANEXA 271Y  
RED U-2 DYNAMO 7021T  
RED U-2 ENVIOUS 216M  
RED SPRING CREEK HI HO 8K  
RED ROYAL DUCHESS 08L  
RED KBJ WILD CARD 1024S  
RED RCR HEATHER 56H

**BW: 2.3 WW: 26 YW: 32 Milk: 20 Total Mat: 33**

- Broker is a super long bull that demonstrates a lot of masculinity, thickness, and width of base
- The Heather cow is a very well put together cow with her great udder attachment, fleshing ability and near perfect foot
- Solid bull that will be highly maternal

**44F**

**RED TER-RON  
CRUZ 44F**

HFX 44F 2037334 January 21 2018 CE \*\*  
BW: 79 lbs Adj 205: 748 lbs Adj 365: 1249 lbs

RED U-2 RECKONING 149A  
**RED U-2 RENOWN 193C**  
RED U-2 ENVIOUS 147X

TER-RON PARK PLACE 18Y  
**RED TER-RON BRANDY 156C**  
RED TER-RON BRANDY 15X

RED U-2 RECON 192Y  
RED U-2 ANEXA 271Y  
RED U-2 DYNAMO 7021T  
RED U-2 ENVIOUS 216M  
HF TIGER 5T  
RED TER-RON GOLDIE 240L  
RED TER-RON RELOAD 703T  
RED TER-RON BRANDY 911S

**BW: 1.6 WW: 38 YW: 60 Milk: 19 Total Mat: 40**

- Cruz is a cherry red bull with piles of depth, length, and over all dimension about him
- He is put together nicely with a smooth shoulder, broad top, and a good quality foot
- The Brandy 156C cow is proving that she can consistently produce

**\$ 7,000**

**\$ LAZY A RANCHING**



**46F**

**TER-RON  
FOXTROT 46F**

RPAH 46F 2052054 January 21 2018 CE \*  
BW: 98 lbs Adj 205: 812 lbs Adj 365: 1410 lbs

RED SIX MILE TAURUS 519A  
**RED SIX MILE HIGH CALIBER 177C**  
RED U6 ALANA 13X

TER-RON PARK PLACE 18Y  
**TER-RON ALICE 32A**  
RED TER-RON ALICE 71P

RED SIX MILE GAME FACE 164Y  
RED SIX MILE SHAWNEE 116T  
BLACK WHEEL ODYSSEY 117U  
RED U6 ALANA 65T  
HF TIGER 5T  
RED TER-RON GOLDIE 240L  
RED TER-RON TITANIC 011M  
RED TER-RON ALICE 07L

**BW: 3.8 WW: 49 YW: 88 Milk: 26 Total Mat: 49**

- Foxtrot is a true power bull that is very noticeable in the pen
- One of our favourites from Day 1 with his extra body capacity, boldness and over all structural correctness
- Dam is a super footed, beautiful uddered, Park Place daughter that is from the Alice cow family
- 46F is one that will move your program forward!

**\$ 6,000**

**ANDY NIEDERER**





**NO SALE**

**50F**

**RED TER-RON  
FILLMORE 50F**

HFX 50F 2037336 January 22 2018 CE \*  
BW: 94 lbs Adj 205: 740 lbs Adj 365: 1217 lbs

RED U-2 RECKONING 149A  
**RED U-2 RENOWN 193C**  
RED U-2 ENVIOUS 147X

RED TER-RON PARKER 34A  
**RED TER-RON LAURYN 140C**  
RED TER-RON LAURYN 190U

RED U-2 RECON 192Y  
RED U-2 ANEXA 271Y  
RED U-2 DYNAMO 7021T  
RED U-2 ENVIOUS 216M  
TER-RON PARK PLACE 18Y  
RED TER-RON DIAMOND MIST 164Y  
RED U-2 BIG LEAGUE 544R  
RED TER-RON LAURYN 82P

**BW: 5 WW: 48 YW: 71 Milk: 19 Total Mat: 43**

- Larger framed Renown son that has extra length and dimension to him
- Just calved out Fillmore's full sister and couldn't be happier with the way she looks
- 50F will add some extra stretch and pounds to your calf crop

**RED  
TER-RON  
FORCE 51F**

**51F**

HFX 51F 2037338 January 22 2018 CE \*\*  
BW: 80 lbs Adj 205: 777 lbs Adj 365: 1253 lbs

RED BAR-E-L ANTHEM 46A  
**RED COMBEST JUGGERNAUT 1613D**  
RED BAR-E-L MEG 85N

RED BRYLOR PANAMA 69P  
**RED TER-RON BOBBIE 93T**  
RED TER-RON BOBBIE 093R

RED WHEEL ALLIANCE 22U  
RED BAR-E-L FRADO 209U  
RED YY RED KNIGHT 640F  
RED BAR-E-L MEG 035G  
RED ZAMA PINE 517G  
RED THAT'LL DO RENEE 683H  
RED HOWE MR MATRIX 7L  
RED TER-RON BOBBIE 093N

**BW: 1.9 WW: 37 YW: 58 Milk: 20 Total Mat: 40**

- Force is a moderate birth and super hairy, big quartered Juggernaut son with excellent feet
- His elite dam has been a top producer, raising sons like Wallace, Wicked, Solo Cup, and the Sully 26E bull that sold in last year's sale to Ellwood Farms and H Bar M Land & Cattle
- Consistent genetics here!!

**OUT OF SALE**

**\$ 6,250**

**WILDOR FARMS**

**54F**

**RED  
TER-RON  
ASTRO 54F**

HFX 54F 2037341 January 23 2018 CE \*  
BW: 86 lbs Adj 205: 741 lbs Adj 365: 1193 lbs

RED BAR-E-L ANTHEM 46A  
**RED COMBEST JUGGERNAUT 1613D**  
RED BAR-E-L MEG 85N

RED ROYAL K-C DUKE 08R  
**RED TER-RON CRESTA 160Z**  
RED TER-RON CRESTA 125U

RED WHEEL ALLIANCE 22U  
RED BAR-E-L FRADO 209U  
RED YY RED KNIGHT 640F  
RED BAR-E-L MEG 035G  
RED SPRING CREEK HI HO 8K  
RED ROYAL DUCHESS 08L  
RED U-2 BIG LEAGUE 544R  
RED TER-RON CRESTA 104P

**BW: 2.2 WW: 34 YW: 46 Milk: 19 Total Mat: 36**

- Astro is a very solid made bull in terms of his over all balance, stoutness, width of top, length of spine and foot quality
- Super hairy, easy moving, and very correct
- Dam is one we look forward to calving out every year
- Beautiful sister sold to Jeff and Monica Harvey of Bashaw in last year's sale



**\$ 10,000**  
**RAFAEL RAMIREZ**



**52F**

**RED TER-RON  
IRONCLAD 52F**

HFX 52F 2037337

January 22 2018 CE \*\*\*

BW: 67 lbs Adj 205: 695 lbs

Adj 365: 1234 lbs

RED WHEEL ALLIANCE 22U

RED BAR-E-L ANTHEM 46A

RED BAR-E-L FRADO 209U

**RED COMBEST JUGGERNAUT 1613D**

RED YY RED KNIGHT 640F

RED BAR-E-L MEG 85N

RED BAR-E-L MEG 035G

HF KODIAK 5R

HF TIGER 5T

HF ECHO 84R

**TER-RON GOLDIE 27Z**

RED LAZY MC DIVIDE 8J

RED TER-RON GOLDIE 240L

RED TER-RON GOLDIE 240J

BW: 3.2 WW: 54 YW: 90 Milk: 22 Total Mat: 48

- Ironclad has been a favourite amongst visitors and his picture describes him very closely
- Super soft made, loose hided, soggy made with a smooth shoulder and a nice angus head
- His dam is a direct Tiger 5T daughter and is also a full sister to the Park Place bull
- We are very high on this bull
- Twin



Ter-Ron Park Place 18Y

Full Brother to Dam of Lot 52F

**\$ 4,000**  
**WALSH FARMS**



**56F**

**RED TER-RON  
COBRA 56F**

HFX 56F 2037340 January 23 2018 CE \*

BW: 89 lbs Adj 205: 820 lbs Adj 365: 1264 lbs

RED U-2 RECKONING 149A

**RED U-2 RENOWN 193C**

RED U-2 ENVIOUS 147X

RED SIX MILE SURE SHOT 195Z

**RED TER-RON LAURYN 151B**

RED TER-RON LAURYN 56Z

RED U-2 RECON 192Y

RED U-2 ANEXA 271Y

RED U-2 DYNAMO 7021T

RED U-2 ENVIOUS 216M

RED SIX MILE WIN-CHESTER 745W

RED STEWART DIXIE 607S

RED TER-RON REALDEAL 01W

RED TER-RON LAURYN 018S

BW: 4.1 WW: 44 YW: 55 Milk: 22 Total Mat: 45

- Cobra is a power house Renown son, backed by an extremely proven cow family
- Long as a train, big hipped, and thick topped with an excellent hair coat
- Dam is a super footed, very solid uddered cow that is becoming a cow that does it year after year
- Brother sold in last year's sale to Jensen Red Angus at Leader SK for \$15500



# \$ 37,000 WHEELER STOCK FARMS & L83 RANCH



**57F**

## RED TER-RON RIDDLER 57F

HAL 57F 2037430

January 24 2018 CE \*

BW: 81 lbs Adj 205: 847 lbs

Adj 365: 1356 lbs

RED U-2 RECON 192Y

RED U-2 RECKONING 149A

RED U-2 ANEXA 271Y

### RED U-2 RENOWN 193C

RED U-2 DYNAMO 7021T

RED U-2 ENVIOUS 147X

RED U-2 ENVIOUS 216M

RED SSS OLY 554T

RED SSS STAUNCH 64Y

RED SSS SCAARA 429W

### RED KENRAY BARONESS 13C

RED NCJ MYSTIFIED 16X

RED K F BARONESS 57Z

RED K F BARONESS 58R

**BW: 2.4 WW: 48 YW: 73 Milk: 27 Total Mat: 54**

- Riddler has been admired by many astute cattlemen throughout the fall
- Very big hipped, wide topped, super soft made, and as thick as you can make them
- We feel very strongly about 57F and feel he is the bull to replace Renown and we would like to utilize him in our own herd
- Athletic in his movement, lots of eye appeal and style to burn with a moderate 81 lb BW
- Dam was a purchase from Kenray Ranch out of the Red Roundup sale a few years back
- Full sister sold in the Power & Perfection Sale at Agribition for \$14000 to River's Edge Farms
- Farm Fair Red Angus Legends of the Fall Champion and Reserve Senior Bull Calf Champion at Canadian Western Agribition behind 10F
- **Retaining 1/2 interest -- Call for details!!**

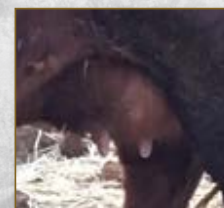
**Retaining  
1/2 Interest**



Picture taken in December



Reserve Senior Champion Bull - Agribition 2018



Udder of Dam

Red Ter-Ron Baroness 53E  
Full Sister to Lot 57F



**\$ 6,500**  
**VARTY FARMS**



**59F**

**RED TER-RON  
WARRANT 59F**

HFX 59F 2037343

January 24 2018 CE \*

BW: 94 lbs Adj 205: 682 lbs

Adj 365: 1167 lbs

RED WHEEL ALLIANCE 22U

RED BAR-E-L ANTHEM 46A

RED BAR-E-L FRADO 209U

**RED COMBEST JUGGERNAUT 1613D**

RED YY RED KNIGHT 640F

RED BAR-E-L MEG 85N

RED BAR-E-L MEG 035G

RED TONGUE RIVER JUBILATION

RED FLYING K JULIAN 72Y

RED FLYING K TAMMY 15W

**RED TER-RON LAURYN 59A**

RED TER-RON REALDEAL 01W

RED TER-RON LAURYN 56Y

RED TER-RON LAURYN 918N

**BW: 3.4 WW: 43 YW: 67 Milk: 16 Total Mat: 36**

- Warrant is a high quality Juggernaut son that we think a lot of
- Strong topped, stout made, very hairy, free made type of bull
- Dam is very moderate with a perfect udder and very good feet

**\$ 4,500**  
**RICK GOULD**



**60F**

**RED TER-RON  
JAGGER 60F**

RPAH 60F 2037403 January 24 2018 CE \*

BW: 95 lbs Adj 205: 749 lbs Adj 365: 1283 lbs

RED BAR-E-L ANTHEM 46A

**RED COMBEST JUGGERNAUT 1613D**

RED BAR-E-L MEG 85N

RED LAZY MC KINGMAN 16W

**RED TER-RON MISS CEE 11Y**

RED TER-RON MISS CEE 167U

RED WHEEL ALLIANCE 22U

RED BAR-E-L FRADO 209U

RED YY RED KNIGHT 640F

RED BAR-E-L MEG 035G

RED RMJ REDMAN 1T

RED LAZY MC MISS 67R

RED SHODEREE DESTINY 114P

RED SIX MILE MISS CEE 274P

**BW: 4.4 WW: 47 YW: 77 Milk: 14 Total Mat: 37**

- Jagger is a very complete, well balanced bull that has a nice look to him and a quality hair coat that is consistent in the Juggernauts
- Dam is a correct uddered cow that is very easy keeping and is also the grand dam to Lot 177F

GRP



# \$ 18,000 TOPHAM RED ANGUS



**70F**

## RED TER-RON FORMULA 70F

RPAH 70F 2037405

January 26 2018 CE \*\*

BW: 83 lbs Adj 205: 731 lbs

Adj 365: 1305 lbs

RED WHEEL ALLIANCE 22U

RED BAR-E-L ANTHEM 46A

RED BAR-E-L FRADO 209U

**RED COMBEST JUGGERNAUT 1613D**

RED YY RED KNIGHT 640F

RED BAR-E-L MEG 85N

RED BAR-E-L MEG 035G

RED TONGUERIVER JUBILATION

RED FLYING K JULIAN 72Y

RED FLYING K TAMMY 15W

**RED TER-RON DIAMOND MIST 167B**

RED LAZY MC KINGMAN 16W

RED TER-RON DIAMOND MIST 164Y

RED TER-RON DIAMOND MIST 29S



Red Ter-Ron Parker 34A  
Brother to Dam of Lot 70F

**BW: 2 WW: 43 YW: 78 Milk: 19 Total Mat: 40**

- Formula is an excellent Juggernaut son with ideal structure, lots of muscle, soft middle, and strong footed
- Definite herd bull prospect that we think a lot of
- Dam is a sister to the popular Semex bull Parker, that is also owned by Lazy MC
- Pen favourite and definitely worth checking out

# \$ 11,000 DEAN SMIGELSKI



**62F**

## RED TER-RON FOREMOST 62F

RPAH 62F 2037402 January 24 2018 CE \*\*\*

BW: 77 lbs Adj 205: 788 lbs Adj 365: 1200 lbs

RED U-2 RECKONING 149A

**RED U-2 RENOWN 193C**

RED U-2 ENVIOUS 147X

TER-RON PARK PLACE 18Y

**RED TER-RON OWYHEE 104C**

RED LFE OWYHEE 608X

RED U-2 RECON 192Y

RED U-2 ANEXA 271Y

RED U-2 DYNAMO 7021T

RED U-2 ENVIOUS 216M

HF TIGER 5T

RED TER-RON GOLDIE 240L

RED 5L NORSEMAN KING 229I

RED YY OWYHEE 702T

**BW: -0.5 WW: 35 YW: 46 Milk: 23 Total Mat: 42**

- Foremost is a bull that has calving ease locked right into him
- Moderate framed, thick topped, big hiped, with all kinds of shape
- The 104C cow is a young Park Place daughter that is backed by great udder quality
- 62F has always been a pen favourite



**\$ 9,000**  
**RON SYMES**

**78F**

**RED TER-RON  
FREEP 78F**

RPAH 78F 2037406 January 29 2018 CE \*\*\*  
BW: 76 lbs Adj 205: 776 lbs Adj 365: 1156 lbs

RED BAR-E-L ANTHEM 46A  
**RED COMBEST JUGGERNAUT 1613D**  
RED BAR-E-L MEG 85N  
  
RED LAZY MC KINGMAN 16W  
**RED TER-RON ALICE 19B**  
RED TER-RON ALICE 7T

RED WHEEL ALLIANCE 22U  
RED BAR-E-L FRADO 209U  
RED YY RED KNIGHT 640F  
RED BAR-E-L MEG 035G  
RED RMJ REDMAN 1T  
RED LAZY MC MISS 67R  
RED BRYLOR PANAMA 69P  
RED TER-RON ALICE 7R

- Another calving ease bull, that is moderate in his frame and highly maternal
- FreeP 78F is from the Alice cow family which is one of our top producing cow families
- A sister to 78F sold this past fall at Red Roundup to Compass Ranch for \$14000

**81F**

**RED TER-RON  
INTERSTATE 81F**

HFX 81F 2037354 January 29 2018 CE \*  
BW: 92 lbs Adj 205: 795 lbs Adj 365: 1411 lbs

RED TWIN HERITAGE HUSTLE 25A  
**RED TER-RON CAPITAL 50C**  
RED TER-RON LAURYN 918T  
  
RED U-2 BIG LEAGUE 544R  
**RED TER-RON DUCHESS 156A**  
RED TER-RON DUCHESS 141W  
  
RED HOWE HUSTLE 13X  
RED TWIN HERITAGE CHER 293S  
RED BAR-E-L APPROVAL 4L  
RED TER-RON LAURYN 918J  
RED LCC MAJOR LEAGUE A502M  
RED U-2 ANEXA 09E  
RED BRYLOR PANAMA 69P  
RED MAC DUCHESS 31F

**BW: 2.5 WW: 35 YW: 65 Milk: 18 Total Mat: 37**

- Interstate is the first bull out of the Capital bull that sold to Redline & Diamond C Liberty Angus a few years back
- Impressive bull in his own right, with extra frame and length while maintaining depth and balance
- Backed by an impressive Big League daughter that also produced bulls that have sold to Brett Twa and Meadow View Farms

**\$ 3,500**  
**JOHN SCHMIDT**

**88F**

**RED TER-RON  
FRENZY 88F**

**OUT OF SALE**  
HFX 88F 2037354 January 29 2018 CE \*\*\*  
BW: 66 lbs Adj 205: 765 lbs Adj 365: 1150 lbs

RED U-2 RECKONING 149A  
**RED U-2 REVERENCE 198C**  
RED U-2 LAKOTA 427Y  
  
RED TWIN HERITAGE HUSTLE 25A  
**RED TER-RON LAURYN 92D**  
RED TER-RON LAURYN 59A  
  
RED U-2 RECON 192Y  
RED U-2 ANEXA 271Y  
RED BDL UPROAR 124U  
RED FLYING K LAKOTA 104U  
RED HOWE HUSTLE 13X  
RED TWIN HERITAGE CHER 293S  
RED FLYING K JULIAN 72Y  
RED TER-RON LAURYN 56Y

**BW: 0.2 WW: 33 YW: 54 Milk: 21 Total Mat: 39**

- Frenzy is a true calving ease specialist that would work very well on heifers
- Very well made, balanced bull that will be highly maternal
- Out of a first calf Hustle daughter that has a picture perfect udder and is from a very good cow family

**89F**

**TER-RON  
CAPITAL 89F**

**\$ 3,000**  
RPAH 89F 2037406 January 31 2018 CE \*  
BW: 102 lbs Adj 205: 809 lbs Adj 365: 1340 lbs

RED TWIN HERITAGE HUSTLE 25A  
**RED TER-RON CAPITAL 89F**  
RED U-2 RECKONING 149A  
RED U-2 REVERENCE 198C  
RED U-2 LAKOTA 427Y  
  
RED TWIN HERITAGE HUSTLE 25A  
**RED TER-RON LAURYN 92D**  
RED TER-RON LAURYN 59A  
  
RED HOWE HUSTLE 13X  
RED TWIN HERITAGE CHER 293S  
RED BAR-E-L APPROVAL 4L  
RED TER-RON LAURYN 918J  
RED LCC MAJOR LEAGUE A502M  
RED U-2 ANEXA 09E  
RED BRYLOR PANAMA 69P  
RED MAC DUCHESS 31F

**BW: 5.1 WW: 75 YW: 65 Milk: 37 Total Mat: 42**

- Capital 89F is a cow bull with added frame, length, bone, and overall mass
- Lots of maternal strength from this deep ribbed Diamond Mist mother
- This bull will add some pounds to your calf crop



**NO SALE**



**93F**

## RED TER-RON FIDO 93F

HFX 93F 2037357 February 01 2018 CE \*  
BW: 93 lbs Adj 205: 719 lbs Adj 365: 1196 lbs

RED U-2 RECKONING 149A  
**RED U-2 RENOWN 193C**  
RED U-2 ENVIOUS 147X

RED BRYLOR PANAMA 69P  
**RED TER-RON LAURYN 139W**  
RED TER-RON LAURYN 018R

RED U-2 RECON 192Y  
RED U-2 ANEXA 271Y  
RED U-2 DYNAMO 7021T  
RED U-2 ENVIOUS 216M  
RED ZAMA PINE 517G  
RED THAT'LL DO RENEE 683H  
RED TER-RON MAMBO 28K  
RED TER-RON LAURYN 018K

**BW: 3.2 WW: 27 YW: 40 Milk: 21 Total Mat: 34**

- Fido has a herd bull look and a bull that we score very high
- Complete, stout made, with a big square hip
- A bull that moves very well and has a stylish look
- His beautifully uddered mother has also produced the Amarillo bull that sold to Circle G & Stewart Ranch, also a son going to Dave & Norman Leavitt and another to Tyler Amundson

**94F**

## RED TER-RON TORPEDO 94F

HFX 94F 2037358 February 02 2018 CE \*\*  
BW: 86 lbs Adj 205: 637 lbs Adj 365: 1109 lbs

**OUT OF SALE**

RED U-2 RECKONING 149A  
RED U-2 RENOWN 193C  
RED U-2 ENVIOUS 147X  
RED BRYLOR PANAMA 69P  
**RED TER-RON LAURYN 139W**  
RED TER-RON LAURYN 018R

RED TER-RON WICKED 53Y  
**RED TER-RON LAURYN 46A**  
RED TER-RON LAURYN 918P

RED U-2 RECON 192Y  
RED U-2 ANEXA 271Y  
RED U-2 DYNAMO 7021T  
RED U-2 ENVIOUS 216M  
RED ZAMA PINE 517G  
RED THAT'LL DO RENEE 683H  
RED TER-RON MAMBO 28K  
RED TER-RON LAURYN 018K

**BW: 3 WW: 40 YW: 66 Milk: 12 Total Mat: 31**

- Another Juggernaut x Wicked combination that has worked very well
- Long, smooth made, square hipped bull that has an ample hair coat and style to burn
- Dam is a deep ribbed, easy fleshing type of female with a big solid foot

**105F**

## TER-RON HUSTLE 105F

HFX 105F 2037360 February 05 2018 CE \*\*\*  
BW: 82 lbs Adj 205: 667 lbs Adj 365: 1178 lbs

RED HOWE HUSTLE 13X  
**RED TWIN HERITAGE HUSTLE 25A**  
RED TWIN HERITAGE CHER 293S

TER-RON PARK PLACE 18Y  
**TER-RON MISS NUFF 3A**  
RED DKF MISS NUFF 107R

RED LAZY MC HUSTLE 18T  
RED HOWE MS BELLA 4N  
RED GEIS ZAMA PINE 123'03  
RED TWIN HERITAGE CHER 160P  
HF TIGER 5T  
RED TER-RON GOLDIE 240L  
RED GOLD-BAR NUFF SAID MM 110N  
RED DKF MISS MAT 54K

**BW: 0.9 WW: 37 YW: 53 Milk: 23 Total Mat: 42**

- Expressive muscle shape, added style and length come with this red carrier Hustle son
- We calved our first Hustle daughters last year and they came with impeccable udders
- Lots of calving ease in this moderate constructed bull
- Full brother sold to Cheram Farms at Sedgewick, AB

**106F**

## RED TER-RON FERRARO 106F

HFX 106F 2037363 February 06 2018 CE \*\*  
BW: 80 lbs Adj 205: 730 lbs Adj 365: 1106 lbs

RED BAR-E-L ANTHEM 46A  
**RED COMBEST JUGGERNAUT 1613D**  
RED BAR-E-L MEG 85N

RED BAR-E-L APPROVAL 4L  
**RED TER-RON RACHEL 315T**  
RED TER-RON RACHEL 315M

RED WHEEL ALLIANCE 22U  
RED BAR-E-L FRADO 209U  
RED YY RED KNIGHT 640F  
RED BAR-E-L MEG 035G  
RED TER-RON CARLTON 810H  
RED BAR-E-L CLASS 10J  
RED LAZY MC DIVIDE 8J  
RED TER-RON RACHEL 15J

**BW: 2 WW: 39 YW: 53 Milk: 20 Total Mat: 40**

- Moderate birth bull that has caught our eye from an early age
- Very eye appealing, moderate framed, with expressive muscle shape and extra thickness
- Ferraro 106F is the type of bull that looks good from all angles and has a very well constructed foot, coming from his sire and mother

**\$ 5,500**  
**KEN CROOKES**







Red Flying K Julian 72Y  
Sire of Lot 107F

107F

## RED TER-RON JULIAN 107F

\$ 4,000

DAVE MOHR

RED TONGUE RIVER JUBILATION  
RED FLYING K JULIAN 72Y  
RED TONGUE RIVER TAN  
RED THAT'LL DO UNBELIEVABLE 6U  
RED TER-RON BRANDY 5X  
RED TER-RON BRANDY 211M

RED TR JULIAN LT142  
RED TY DYNA ST669  
RED FLYING K MISSION 71T  
RED FLYING K MS DYNAMO 106R  
RED LAZY R C EL SENRO 405P  
RED THAT'LL DO MISS 57N  
RED LAZY MC DIVIDE 8J  
RED TER-RON BRANDY 11J

BW: 3.1 WW: 38 YW: 74 Milk: 15 Total Mat: 33

- Only Julian son in the whole sale and what a good one he is
- We have found that our Julian daughters are turning into some of our top cows, super footed and very sound uddered, in a moderate package
- 107F is a visually impressive bull with lots of hair, extra muscle pattern, and bred to be highly maternal
- His big bodied, broody dam has also raised a son that is working in the Brownalta herd at Hairy Hill

## RED TER-RON MISSILE 110F

HFX 110F 2064551 February 07 2018 CE \*\*\*  
BW: 84 lbs Adj 205: 789 lbs Adj 365: 1238 lbs

RED LJC MISSION STATEMENT P27  
RED SILVEIRAS MISSION NEXUS  
RED SILVEIRAS DAORV 8399

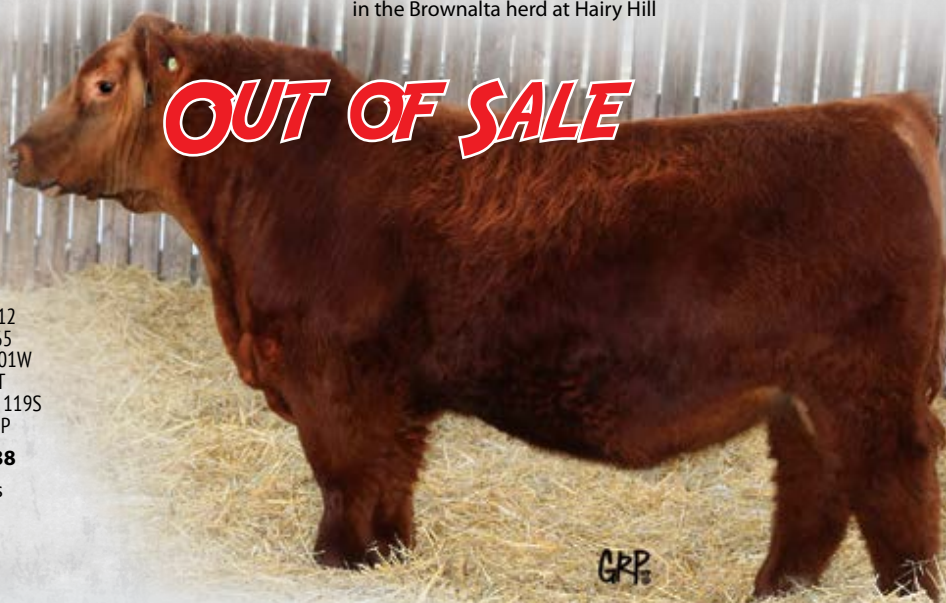
RED TER-RON SOLO CUP 180Z  
RED TER-RON BRANDY 31B  
RED TER-RON BRANDY 58U

RED LJC LANCER 806  
RED LJC HANNAH 106  
RED TROTTERS ROMEO 412  
RED MOORE'S DAORV 5365  
RED TER-RON REALDEAL 01W  
RED TER-RON BOBBIE 93T  
RED JD LANN EVOLUTION 119S  
RED TER-RON BRANDY 11P

BW: 1.7 WW: 45 YW: 76 Milk: 16 Total Mat: 38

- Full ET brother to lot 117F. Little different twist to this bulls pedigree
- Medium framed, clean fronted, longer designed bull with lots of hair
- Dam is from the Brandy cow line, so you will want to keep the females from this calving ease sire

OUT OF SALE



\$ 5,000

GARY SCHELER

114F

## TER-RON TITAN 114F

HFX 114F 2037366 February 08 2018 CE \*  
BW: 90 lbs Adj 205: 840 lbs Adj 365: 1349 lbs

S A V HARVESTOR 0338  
EF TITAN 545  
EXAR BLACKBIRD 5877

RED TER-RON MAMBO 28K  
RED TER-RON GOLDIE 240P  
RED TER-RON GOLDIE 240L

S A V HERITAGE 6295  
S A V EMBLYNETTE 7749  
SCHURRTOP MC 2500  
EXAR BLACKBIRD 4448  
RED YY RED KNIGHT 640F  
RED ALDER ABG STAR DUST 8G  
RED LAZY MC DIVIDE 8J  
RED TER-RON GOLDIE 240J

BW: 3.3 WW: 58 YW: 91 Milk: 21 Total Mat: 50

- 114F is a result of our constant search for raising some outcross genetics for our valued customers
- The EF Titan bull was Supreme Champion Bull at Canadian Western Agribition a few years back
- Unlimited shape and thickness on a sound structure and foot
- 15 year old dam is still going strong with a sound udder like a young cow. Goldie 240P is actually a maternal sister to Fully Loaded 540R
- Brothers have sold to Paul Murray, Allen Hillman, Van Patten Farms, Anchor 1 Angus, Ken Crookes, Twin Heritage Farms, and Eric Stenson. Quite a track record!



**\$ 5,500**  
**NEU MUEHL FARMING**  
**CO**



**115F**

**RED TER-RON**  
**BLAZER 115F**

HFX 115F 2037365 February 08 2018 CE\*  
BW: 96 lbs Adj 205: 781 lbs Adj 365: 1285 lbs

TER-RON PARK PLACE 18Y  
**RED TER-RON BAZINGA 13B**  
RED TER-RON AMBER 46W

RED MOOSE CREEK CIGAR 61S  
**RED TER-RON GOLDIE 71U**  
RED TER-RON GOLDIE 240L

HF TIGER 5T  
RED TER-RON GOLDIE 240L  
RED TER-RON TOUCHDOWN 8S  
RED TER-RON AMBER 28P  
RED T-K DUSTER 10K  
RED MOOSE CREEK FREYJA 5J  
RED LAZY MC DIVIDE 8J  
RED TER-RON GOLDIE 240J

**BW: 3.7 WW: 44 YW: 63 Milk: 19 Total Mat: 41**

- Blazer is a massive, extra wide, very solid Bazinga son with a very dark cherry red colour
- Dam has always been a very solid producer and 115F could be her best effort yet
- 115F seems to be a bull you always notice in the bull pen with his cool, docile demeanour

**117F**

**RED TER-RON**  
**MISSION 117F**

HFX 117F 2064547 February 09 2018 CE\*\*\*  
BW: 79 lbs Adj 205: 719 lbs Adj 365: 1249 lbs

RED LJC MISSION STATEMENT P27  
**RED SILVEIRAS MISSION NEXUS**  
RED SILVEIRAS DAORV 8399

RED TER-RON SOLO CUP 180Z  
**RED TER-RON BRANDY 31B**  
RED TER-RON BRANDY 58U

RED LJC LANCER 806  
RED LJC HANNAH 106  
RED TROTTERS ROMEO 412  
RED MOORE'S DAORV 5365  
RED TER-RON REALDEAL 01W  
RED TER-RON BOBBIE 93T  
RED JD LANN EVOLUTION 119S  
RED TER-RON BRANDY 11P

**BW: 1.7 WW: 45 YW: 76 Milk: 16 Total Mat: 38**

- Moderate, chunky made bull with an excellent temperament just like his brother
- Heifer bull prospect that is definitely worth a look

**\$ 4,000**  
**VARTY FARMS**



**125F**

**RED TER-RON**  
**RENOWN 125F**

RPAH 125F 2072840 February 12 2018 CE\*  
BW: 92 lbs Adj 205: 691 lbs Adj 365: 1171 lbs

RED U-2 RECKONING 149A  
**RED U-2 RENOWN 193C**  
RED U-2 ENVIOUS 147X

XO CROWFOOT CHALLENGER 354A  
**RED TER-RON DIAMOND MIST 193C**  
RED TER-RON DIAMOND MIST 164Y

RED U-2 RECON 192Y  
RED U-2 ANEXA 271Y  
RED U-2 DYNAMO 7021T  
RED U-2 ENVIOUS 216M  
XO CROWFOOT 0102X  
RED CROWFOOT GOLDETTE 6314S  
RED LAZY MC KINGMAN 16W  
RED TER-RON DIAMOND MIST 29S

**BW: 4.3 WW: 36 YW: 57 Milk: 17 Total Mat: 33**

- Moderate made, deep sided bull that is square hipped... very typical of Renowns
- 125F is bred to be very maternal coming out of the Diamond Mist cow line
- If you're looking to keep replacements and know a little leg off some of your bigger cows, this may be your bull
- Maternal brother sold to North 40 Angus at Vanderhoof BC in last year's sale

**126F**

**RED TER-RON**  
**CAPITALIST 126F**

HFX 126F 2037368 February 12 2018 CE\*  
BW: 95 lbs Adj 205: 809 lbs Adj 365: 1281 lbs

RED TWIN HERITAGE HUSTLE 25A  
**RED TER-RON CAPITAL 50C**  
RED TER-RON LAURYN 918T

RED SIX MILE GAMER 224X  
**RED TER-RON DUCHESS 94B**  
RED TER-RON DUCHESS 66S

RED HOWE HUSTLE 13X  
RED TWIN HERITAGE CHER 293S  
RED BAR-E-L APPROVAL 4L  
RED TER-RON LAURYN 918J  
RED VGW GAME PLAN 816  
RED SIX MILE MS EXTRA 427U  
RED K-C MR. E 143N  
RED TER-RON DUCHESS 6P

**BW: 3 WW: 37 YW: 57 Milk: 25 Total Mat: 43**

- Capitalist 126F is a long built bull that has a soft look to him
- Well balanced, smooth fronted, structurally correct bull that has some size to him
- Brother sold in last year's sale to Keith Wittmack at Consort



# \$ 20,000 BRYLOR ANGUS & ON THE MARK CATTLE CO



**134F**

## RED TER-RON FREEWAY 134F

HFX 134F 2064616

February 15 2018 CE \*

BW: 90 lbs Adj 205: 814 lbs

Adj 365: 1435 lbs

RED U-2 RECON 192Y

RED U-2 RECKONING 149A

RED U-2 ANEXA 271Y

### RED U-2 RENOWN 193C

RED U-2 DYNAMO 7021T

RED U-2 ENVIOUS 147X

RED U-2 ENVIOUS 216M

CROWFOOT MAX 1743L

RED CROWFOOT 6253S

CROWFOOT PIED PIPER 3859N

### RED ML MISS LINETT 938W

RED BECKTON CLIPPER D225 JM

RED BAR-X MISS LINETT 151K

RED BAR-X MISS LINETT 284D

**BW: 3.6 WW: 44 YW: 67 Milk: 22 Total Mat: 44**

- Freeway is a very impressive ET calf out of the 938W cow owned by Circle G. We shared a flush on her with Garth Cutler due to her excellent track record, phenotype, udder quality, near perfect foot structure, and her overall broodiness.
- We score Freeway right near the top of the pen because of his overall thickness, depth, foot structure, and exceptional body length and his great look
- This guy is definitely worth the trip to Forestburg on March 21st
- Bred to be a great one



Red ML Miss Linett 938W  
Dam of Lot 134F



# \$ 3,250 PATRICK MATHIOT



**133F**

## RED TER-RON FORBIDDEN 133F

RPAH 133F 2037420 February 15 2018 CE \*\*

BW: 80 lbs Adj 205: 748 lbs Adj 365: 1180 lbs

RED U-2 RECKONING 149A

### RED U-2 RENOWN 193C

RED U-2 ENVIOUS 147X

RED C-T KING KONG 1121

### RED TER-RON MISSY 1C

RED RUST MISS 329A

RED U-2 RECON 192Y

RED U-2 ANEXA 271Y

RED U-2 DYNAMO 7021T

RED U-2 ENVIOUS 216M

RED HXC CONQUEST 4405P

RED C-T LASS 0920

RED FCC RAMBO 502

RED NSFR MTX W14

**BW: 1.3 WW: 35 YW: 49 Milk: 19 Total Mat: 37**

- Forbidden represents another top end son of Renown
- Very stout made, super square, and carries natural depth and volume from his fore rib to his flank
- Only an 80 lb birth weight and from a moderate framed, easy fleshing young cow
- 133F's dam is a sister to the Lot 23F bull



**\$ 9,500**  
**AIRAM FARMS**



**136F**

**RED TER-RON  
RESOURCEFUL 136F**

RPAH 136F 2037421 February 16 2018 CE \*\*\*  
BW: 71 lbs Adj 205: 725 lbs Adj 365: 1566 lbs

S A V RESOURCE 1441  
**MRLA 109D**  
RED MRLA MISS 345X

RED TWIN HERITAGE HUSTLE 25A  
**RED TER-RON DIAMOND MIST 197D**  
RED TER-RON DIAMOND MIST 145A

RITO 707 OF IDEAL 3407 7075  
S A V BLACKCAP MAY 4136  
RED SOO LINE MOMENTUM 7051  
RED MRLA MISS 269T  
RED HOWE HUSTLE 13X  
RED TWIN HERITAGE CHER 293S  
RED FLYING K JULIAN 72Y  
TER-RON DIAMOND MIST 28Y

**BW: 2.5 WW: 40 YW: 71 Milk: 19 Total Mat: 39**

- Resourceful is a direct grandson of the great SAV Resource
- We used his sire 109D on heifers and he worked like a dream
- Lots of middle, super cool look, dark red, added length and calving ease best describes 136F
- Dam is a first calf cow stemming from the Diamond Mist cow family excellent choice for your heifers

**150F**

**RED TER-RON  
FARMHAND 150F**

HFX 150F 2037372 February 22 2018 CE \*  
BW: 97 lbs Adj 205: 707 lbs Adj 365: 1203 lbs

RED U-2 RECKONING 149A  
**RED U-2 RENOWN 193C**  
RED U-2 ENVIOUS 147X

RED TER-RON PARKER 34A  
**RED TER-RON BRANDY 130C**  
RED TER-RON BRANDY 115U

RED U-2 RECON 192Y  
RED U-2 ANEXA 271Y  
RED U-2 DYNAMO 7021T  
RED U-2 ENVIOUS 216M  
TER-RON PARK PLACE 18Y  
RED TER-RON DIAMOND MIST 164Y  
RED TER-RON FULLY LOADED 540R  
RED TER-RON BRANDY 711L

**BW: 5.1 WW: 42 YW: 63 Milk: 15 Total Mat: 33**

- Farmhand is a visually impressive, moderate framed herd bull that looks good from all angles
- He is stout and solid with an impressive muscle pattern
- His super feminine and broody mother has a beautiful udder

**\$ 3,500**  
**BLAIR ANDERSON**



Visitors from Argentina - Summer 2018





**OUT OF SALE**



**158F**

**TER-RON  
INTIMIDATOR 158F**

RPAH 158F 2072841 February 25 2018 CE \*  
BW: 89 lbs Adj 205: 831 lbs Adj 365: 1427 lbs

S A V 9969 RITO 2242  
**DTA INTIMIDATOR 17C**  
ALLANDALE TIPTOP 15A

LFE VELOCITY 381B  
**DTA BARANDA 25D**  
NRA BARANDA 141A

S A V 707 RITO 9969  
S A V BLACKBIRD 9050  
S A V BISMARCK 5682  
ALLANDALE TIPTOP 18U  
S A V HARVESTOR 0338  
MV F PRIDE 87U  
WILBAR TIGERSHARK 420Y  
MV F BARANDA 154U

**BW: 6.1 WW: 59 YW: 105 Milk: 24 Total Mat: 53**

- Unique, soft made bull with extra length and depth... all this with a very attractive look
- Dam was purchased out of the Form and Function sale from Arntzen's and she has done an excellent job on her first try
- Lots of performance and a bull that will grab your attention
- Homozygous Black



S A V Resource 1441  
Grand Sire to Lot 136F and 177F



**RED TER-RON  
RESOURCE 177F**

RPAH 177F 2037426 March 14 2018 CE \*  
BW: 74 lbs Adj 205: 744 lbs Adj 365: 1267 lbs

S A V RESOURCE 1441  
**MRLA 109D**  
RED MRLA MISS 345X

RED TER-RON BAZINGA 13B  
**RED TER-RON MISS CEE 114D**  
RED TER-RON MISS CEE 11Y

RITO 707 OF IDEAL 3407 7075  
S A V BLACKCAP MAY 4136  
RED SOO LINE MOMENTUM 7051  
RED MRLA MISS 269T  
TER-RON PARK PLACE 18Y  
RED TER-RON AMBER 46W  
RED LAZY MC KINGMAN 16W  
RED TER-RON MISS CEE 167U

**BW: 2.2 WW: 39 YW: 64 Milk: 18 Total Mat: 37**

- Another red hided grandson of the great SAV Resource
- Super easy fleshing and a moderate frame in this stout, wide topped, calving ease bull
- Sleep at night calving ease!!

**177F**

**\$ 4,500  
DALE GIBB**







Red Ter-Ron Santana 73C  
Sire of Lot 39E

39E

## RED TER-RON ELDORADO 39E

**\$ 3,500**

**KEVIN KARPSYSHYN**

RED TER-RON PARKER 34A  
RED TER-RON SANTANA 73C  
RED TER-RON GOLDIE 108U  
RED TER-RON GOLDIE 240J

976793 January 24 2017 CE \*\*\*  
Adj 205: 663 lbs Adj 365: 1147 lbs  
TER-RON PARK PLACE 18Y  
RED TER-RON DIAMOND MIST 164Y  
RED IL 2 BIG LEAGUE 544P  
RED K DOTE 107Y  
RED MOOSE CREEK FREYJA 5J  
RED SSS BOOM TOWN 260D  
RED TOP GOLDIE 40U

BW: -0.9 WW: 23 YW: 34 Milk: 7 Total Mat: 19

- If you're looking for an extra age heifer bull, Eldorado would be a good choice
- Smooth shouldered, big nuttred, long as a train with a nice look in this 68 lb BW calving ease specialist
- Dam is a super uddered, great footed cow with built in calving ease. A son has also been sold to John Schmidt at Coronation

## RED TER-RON RECALL 154E

154E

**\$ 6,500**

**TRIPLE X RED ANGUS**

HFX 154E 1976835 February 18 2017 CE \*  
BW: 89 lbs Adj 205: 745 lbs Adj 365: 1181 lbs

RED U-2 RECKONING 149A  
RED U-2 RENOWN 193C  
RED U-2 ENVIOUS 147X

RED TER-RON WICKED 53Y  
RED TER-RON BRANDY 28A  
RED TER-RON BRANDY 61U

RED U-2 RECON 192Y  
RED U-2 ANEXA 271Y  
RED U-2 DYNAMO 7021T  
RED U-2 ENVIOUS 216M  
RED TER-RON REALDEAL 01W  
RED TER-RON BOBBIE 93T  
RED TER-RON LAWMAN 411S  
RED TER-RON BRANDY 811S

BW: 4.6 WW: 37 YW: 47 Milk: 14 Total Mat: 33

- Recall is a 2 year old son of Renown with added frame and length, excellent shape and depth
- Big solid foot on this bull
- Dam is a dark cherry red wedge shaped looker that grabs the attention of visitors



**NO SALE**

198E

## RED TER-RON RADDLER 198E

KEEL 198E 1987696 May 29 2017 CE \*  
BW: 90 lbs Adj 205: lbs Adj 365: lbs

RED LAZY MC KINGMAN 16W  
RED TER-RON HOT SHOT 10B  
RED K ADAMS ZARIA 091Z

TER-RON PARK PLACE 18Y  
RED TER-RON SANDY 29C  
RED BLAIRS SANDY 201X

RED RMJ REDMAN 1T  
RED LAZY MC MISS 67R  
RED TER-RON REALDEAL 01W  
RED K ADAMS UNDECIDED 291U  
HF TIGER 5T  
RED TER-RON GOLDIE 240L  
RED CORNER CREEK CASH 2R  
RED JCC SANDY 113N

BW: WW: YW: Milk: Total Mat:

- 198E is an end of May two year old that will have lots of fans on sale day
- Very stout, big hipped, deep sided and bred to be maternally great
- Best part of this guy may be his dam who is in our ET program
- You will definitely want to see 198E's dam to help solidify your decision



Red Ter-Ron Sandy 29C  
Dam of Lot 198E



**\$ 3,000**  
**ANDY NIEDERER**



**802F**

**TER-RON GO DADDY 802F**

HFX 802F BPG1247772 January 22 2018 CE \*\*  
BW: 85 lbs Adj 205: 655 lbs Adj 365: 1116 lbs

MRL EL TIGRE 52Z  
**WLB GO DADDY 52Z 368D**  
BLACKSAND TESS 56A

SPRINGCREEK OLYMPIAN 66A  
**TER-RON JOLETTE 530C**  
CG BLACK JOLETTE 230X

WHEATLAND PREDATOR 922W  
MRL MISS 836W  
HARVIE JDF WALLBANGER111X  
SPRINGCREEK BLK TESS 25T  
SPRINGCREEK ALL IN 155Y  
SPRINGCREEK LINNE 33R  
SPRINGCREEK RED TANK 55S  
CG BLACK JOLETTE 341N

**BW: 2.2 WW: 66 YW: 90 Milk: 20 Total Mat: 53**

- Blaze face Go Daddy son that is moderate in size, but has lots of rib shape and thickness and a great hair coat
- Maternal brother to the 030E two year old bull
- Young mother is also a sister to the lot 803F bull

**TER-RON GO DADDY 803F**

**803F**

HFX 803F PG1247854 January 25 2018 CE \*  
BW: 97 lbs Adj 205: 749 lbs Adj 365: 1242 lbs

MRL EL TIGRE 52Z  
**WLB GO DADDY 52Z 368D**  
BLACKSAND TESS 56A

SPRINGCREEK RED TANK 55S  
**CG BLACK JOLETTE 230X**  
CG BLACK JOLETTE 341N

WHEATLAND PREDATOR 922W  
MRL MISS 836W  
HARVIE JDF WALLBANGER111X  
SPRINGCREEK BLK TESS 25T  
SPRINGCREEK TANK 57P  
BDV AMANDA L43  
TNT SURVIVOR K220  
M R BLACK JOLETTE 958

**BW: 3.0 WW: 69 YW: 100 Milk: 20 Total Mat: 55**

- Powerful performance bull that has as much length and thickness as any bull in the offering
- Dam has been a very solid producer, with past sons selling to Stacey Fuller and George Standing
- If you're looking for a red herd sire that is very maternally bred, consider 803F



**\$ 3,500**  
**SPRUCEVILLE CATTLE CO**

**804F**

**TER-RON GO DADDY 804F**

HFX 804F BPG1247891 January 26 2018 CE \*  
BW: 95 lbs Adj 205: 800 lbs Adj 365: 1374 lbs

MRL EL TIGRE 52Z  
**WLB GO DADDY 52Z 368D**  
BLACKSAND TESS 56A

STF UNANIMOUS UP26  
**STF/HR MISS X126**  
SS PAIGE

WHEATLAND PREDATOR 922W  
MRL MISS 836W  
HARVIE JDF WALLBANGER111X  
SPRINGCREEK BLK TESS 25T  
STF RUSSOM RE86  
STF SLY MOVES P260  
NIC LAREDO  
BS MISS PREF STOCK 263J

**BW: 2.5 WW: 80 YW: 117 Milk: 18 Total Mat: 58**

- High quality Go Daddy son that is wide based, long bodied, and carries his sire's thickness
- This big bodied, broody dam seems to do it every year. Sons have sold to Spruceview Cattle Co, Bill Bowie, and Tom Leslie

**\$ 4,500**  
**BRAD BRENCHLEY**





**\$ 9,000**  
**BRIMACOMBE FAMILY FARM**



**810F**

**TER-RON GO DADDY 810F**

HFX 810F BPG1247896  
January 30 2018 CE \*  
BW: 87 lbs Adj 205: 751 lbs  
Adj 365: 1389 lbs

GRP

**BW: 1.0 WW: 75 YW: 118 Milk: 22 Total Mat: 60**

- Well balanced herd bull prospect that is full of muscle, body dimension, and structural soundness
- We like the style and proud character this bull exhibits
- Dam is a cow we got from Rancier Farms that seems to produce near the top, year after year

WHEATLAND PREDATOR 922W  
MRL EL TIGRE 52Z  
MRL MISS 836W

**WLB GO DADDY 52Z 368D**

HARVIE JDF WALLBANGER111X  
BLACKSAND TESS 56A  
SPRINGCREEK BLK TESS 25T  
CNS DREAM ON L186  
SS EBONY'S INTUITION 802  
SOSF EBONY'S JOY L-123

**RF WHISPER 247Z**

PVF-BF BF26 BLACK JOKER  
RF WHISPER 4U  
RF WHISPER 14P

**\$ 3,500**  
**SPRUCEVILLE CATTLE CO**



**805F**

**TER-RON GO DADDY 805F**

HFX 805F BPG1247900 January 26 2018 CE \*  
BW: 95 lbs Adj 205: 759 lbs Adj 365: 1252 lbs

MRL EL TIGRE 52Z

**WLB GO DADDY 52Z 368D**

BLACKSAND TESS 56A

RF DOUBLE UP 37W

**TER-RON NAOMI 22Z**

DOUBLE BAR D NAOMI 650X

WHEATLAND PREDATOR 922W  
MRL MISS 836W  
HARVIE JDF WALLBANGER111X  
SPRINGCREEK BLK TESS 25T  
SS EBONY'S INTUITION 802  
TLG FLIRTIN WITH YOU  
SPRINGCREEK TEDDY 72U  
DOUBLE BAR D NAOMI 76S

**BW: 1.5 WW: 73 YW: 105 Milk: 21 Total Mat: 58**

- Very complete package that is very square hipped, has lots of rib shape, loads of substance and dimension
- Dam is a big volumed, super uddered Double Up daughter that we are striving to make our Simmie cows look like
- Keep every daughter out of 805F



**OUT OF SALE**



**814F**

**TER-RON  
AFFAIR 814F**

HFX 814F BPG1247783

February 6 2018 CE \*\*\*

BW: 77 lbs Adj 205: 671 lbs

Adj 365: 1277 lbs

REMINGTON LOCK N LOAD 54U

STF ROYAL AFFAIR Z44M

STF ONYX 451W

**WHEATLAND FINAL AFFAIR**

WHEATLAND STOUT 930W

WHEATLAND LADY 212Z

WHEATLAND LADY 93X

SS EBONY'S INTUITION 802

RF DOUBLE UP 37W

TLG FLIRTIN WITH YOU

**TER-RON NAOMI 550C**

SPRINGCREEK TEDDY 72U

DOUBLE BAR D NAOMI 650X

DOUBLE BAR D NAOMI 76S

**BW: 1.4 WW: 67 YW: 103 Milk: 21 Total Mat: 54**

- Attractive calving ease bull that is big barreled and stout made with an excellent hair coat
- This guy should sire calves that are born easy and perform
- 814F's dam, another Double Up daughter, should add reliability to this bull's resume

**OUT OF SALE**



**806F**

**TER-RON  
GO DADDY 806F**

HFX 806F BPG1247910 January 26 2018 CE \*\*

BW: 82 lbs Adj 205: 711 lbs Adj 365: 1260 lbs

MRL EL TIGRE 52Z

**WLB GO DADDY 52Z 368D**

BLACKSAND TESS 56A

RF DOUBLE UP 37W

**TER-RON MS 354A**

DEEG MS 54Y

WHEATLAND PREDATOR 922W

MRL MISS 836W

HARVIE JDF WALLBANGER111X

SPRINGCREEK BLK TESS 25T

SS EBONY'S INTUITION 802

TLG FLIRTIN WITH YOU

CMS ULTOR 822U

RDD MS 35T

**BW: 1.3 WW: 72 YW: 107 Milk: 22 Total Mat: 57**

- Moderate birth weight, soft made, eye appealing bull with lots of hair
- Dam is a beautiful female that has udder quality that is very typical of the Double Ups

GRP



**OUT OF SALE**



**824F**

**TER-RON  
GO DADDY 824F**

HFX 824F BPG1247764 March 10 2018 CE \*\*\*

BW: 80 lbs Adj 205: 761 lbs Adj 365: lbs

MRL EL TIGRE 52Z  
**WLB GO DADDY 52Z 368D**  
BLACKSAND TESS 56A

FBF1 COMBUSTIBLE  
**TER-RON PHYLCIA 577C**  
MOOSE CREEK MISS LABEL

WHEATLAND PREDATOR 922W  
MRL MISS 836W  
HARVIE JDF WALLBANGER111X  
SPRINGCREEK BLK TESS 25T  
SVF STEEL FORCE S701  
LAZY H BURN BABY BURNR34  
GREAT DANE RED LABEL 43T  
TWIN ANCHOR 7 PHYLCIA 2P

**BW: 0.9 WW: 66 YW: 103 Milk: 20 Total Mat: 53**

- Youngest Simmental bull in the sale but holds his own
- Cool marked, with a star on his head
- Stout made, free moving, full of hair and lots of style
- Dam is a blaze faced up and comer with a very good udder attachment and a real broody look. This female is going to raise herd bulls for years to come.

**819F**

**TER-RON  
SPECIALIST 819F**

**NO SALE**

HFX 819F BPG1247763 February 16 2018 CE \*\*

BW: 88 lbs Adj 205: 686 lbs Adj 365: 1179 lbs

IPU RED SPECIALIST 70T  
**TER-RON SPECIALIST 418B**  
MAJESTIC MISS CANDACE 18Y

TNT GUNNER N208  
**DEEG MS 27B**  
DEEG MS 67Z

WHEATLAND RED TEDDY 457P  
IPU MS RED RIBEYE 201R  
JF MILESTONE 999W  
ANKONY MISS CANDACE P6  
RC STINGER 072K  
TNT MISS HONEY L9  
SWAN LAKE XMAN 4X  
DBD MS 131W

**BW: 1.4 WW: 59 YW: 86 Milk: 28 Total Mat: 57**

- Moderate red bull that possesses style, depth and hair
- Lots of calving ease in these specialist bulls and you can expect real good udders and easy do-ability in the females

**823F**

**TER-RON  
GO DADDY 823F**

**NO SALE**

HFX 823F BPG1247758 March 3 2018 CE \*\*\*

BW: 80 lbs Adj 205: 739 lbs Adj 365: 1256 lbs

MRL EL TIGRE 52Z  
**WLB GO DADDY 52Z 368D**  
BLACKSAND TESS 56A

WXR REDPATHS KOSMO 38Z  
**TER-RON NAOMI 422B**  
TER-RON NAOMI 22Z

WHEATLAND PREDATOR 922W  
MRL MISS 836W  
HARVIE JDF WALLBANGER111X  
SPRINGCREEK BLK TESS 25T  
MUIRHEADS KOSMO 157R  
REDPATHS FANCYNFORCEFULL  
RF DOUBLE UP 37W  
DOUBLE BAR D NAOMI 650X

**BW: 0.0 WW: 65 YW: 95 Milk: 23 Total Mat: 56**

- Another calving ease bull that is very easy going, typical of the Go Daddy progeny
- One of the younger bulls in the pen but still possesses depth, thickness, and fleshing ability

**2 Year Old**

**030E**

**TER-RON  
SPECIALIST 030E**

HFX 030E BPG1212646 January 27 2017 CE \*\*\*

BW: 84 lbs Adj 205: 763 lbs Adj 365: 1235 lbs

IPU RED SPECIALIST 70T  
**TER-RON SPECIALIST 418B**  
MAJESTIC MISS CANDACE 18Y

SPRINGCREEK OLYMPIAN 66A  
**TER-RON JOLETTE 530C**  
CG BLACK JOLETTE 530C

WHEATLAND RED TEDDY 457P  
IPU MS RED RIBEYE 201R  
JF MILESTONE 999W  
ANKONY MISS CANDACE P6  
SPRINGCREEK ALL IN 155Y  
SPRINGCREEK LINNE 33R  
SPRINGCREEK RED TANK 55S  
CG BLACK JOLETTE341N

**BW: 1.6 WW: 67 YW: 97 Milk: 24 Total Mat: 58**

- If you think you recognize 030E from last year's sale you are right. He was supposed to be in last year's sale but he came up with a foot abscess days before the sale so we decided to pull him out. We got him over the abscess and used him for clean up on our heifers.
- Blaze face & maternal brother to Lot 802F
- Lots of thickness and mass in this calving ease bull. Ranked in the top 10% of the breed for calving ease
- Hard to find two year olds with this much quality

**\$ 7,000  
BARNES FARMCO**







# Females

**11F**

## RED TER-RON GOLDIE 11F

HFX 11F 2037317 January 11 2018  
BW: 78 lbs Adj 205: 710 lbs Adj 365: 930 lbs

RED BAR-E-L ANTHEM 46A  
**RED COMBEST JUGGERNAUT 1613D**  
RED BAR-E-L MEG 85N

RED BRYLOR PANAMA 69P  
**RED TER-RON GOLDIE 840T**  
RED TER-RON GOLDIE 240P

RED WHEEL ALLIANCE 22U  
RED BAR-E-L FRADO 209U  
RED YY RED KNIGHT 640F  
RED BAR-E-L MEG 035G  
RED ZAMA PINE 517G  
RED THAT'LL DO RENEE 683H  
RED TER-RON MAMBO 28K  
RED TER-RON GOLDIE 240L

**BW: 2.8 WW: 46 YW: 59 Milk: 20 Total Mat: 45**

- Goldie 11F is a definite sale feature with her natural thickness, width of top, length of body and true angus character
- Very easy fleshing and really pushes the scale down
- Dark cherry red, with a dark hoof
- Dam has a picture perfect udder and great feet

# \$ 9,000

## RANCHO EL ERMITANO


**32F**

## RED TER-RON DUCHESS 32F

32F 2037329 January 17 2018  
Adj 205: 593 lbs Adj 365: 980 lbs

RED U-2 RECKONING 149A  
**RED U-2 RENOWN 193C**

# REVERSE CC

RED TER-RON MAMBO 28  
**RED TER-RON DUCHESS 831N**  
RED MAC DUCHESS 31F

RED U-2 RECON 192Y  
RED U-2 ANEXA 271Y  
RED U-2 DYNAMO 7021T  
RED U-2 ENVIOUS 216M  
RED YY RED KNIGHT 640F  
RED ALDER ABG STAR DUST 8G  
RED THAT'LL DO CRITIQUE 22C  
RED MISS SKY 12B

**BW: 38 WW: 68 YW: 68 Milk: 18 Total Mat: 37**

# ANGUS

- Duchess is a long bodied, feminine fronted female with a strong pedigree
- We are calving our first Renowns as I am writing these footnotes, and are very happy with what we see
- We had to finally get rid of 32F's dam at 15 years of age. Talk about longevity!!
- Full brother sold to J Lazy A Ranch in last year's sale for \$10000

**48F**

## RED TER-RON BRANDY 48F

48F 2072842 January 22 2018  
Adj 205: 524 lbs Adj 365: 919 lbs

RED U-2 RECKONING 149A  
**RED U-2 REVERENCE 198C**

# BRAD BRENCHLEY

RED TER-RON PARKER 34A  
**RED TER-RON BRANDY 75D**  
RED TER-RON BRANDY 115U

RED U-2 RECON 192Y  
RED U-2 ANEXA 271Y  
RED U-2 DYNAMO 7021T  
RED U-2 ENVIOUS 216M  
RED YY RED KNIGHT 640F  
RED ALDER ABG STAR DUST 8G  
RED THAT'LL DO CRITIQUE 22C  
RED MISS SKY 12B

**BW: 0 WW: 33 YW: 61 Milk: 18 Total Mat: 34**

- Brandy 48F is sired by our calving ease specialist Reverence 198C
- Fancy made with lots of presence and eye appeal
- Moderate framed and complete out of a first calf Parker daughter with a gorgeous udder



**\$ 4,000**  
**DAVIDSON ANGUS**



**68F**

**RED TER-RON LAURYN 68F**

HFX 68F 2072843 January 26 2018  
BW: 58 lbs Adj 205: 549 lbs Adj 365: 925 lbs

RED U-2 RECKONING 149A  
**RED U-2 REVERENCE 198C**  
RED U-2 LAKOTA 427Y

RED TER-RON BAZINGA 13B  
**RED TER-RON LAURYN 33D**  
RED TER-RON LAURYN 56Z

RED U-2 RECON 192Y  
RED U-2 ANEXA 271Y  
RED BDL UPROAR 124U  
RED FLYING K LAKOTA 104U  
TER-RON PARK PLACE 18Y  
RED TER-RON AMBER 46W  
RED TER-RON REALDEAL 01W  
RED TER-RON LAURYN 018S

**BW: -1.2 WW: 32 YW: 49 Milk: 21 Total Mat: 37**

- Lauryn 68F started out small, but has grown into a real complete, deep sided heifer with some stoutness and lots of femininity
- The Lauryn's are known to be super sound footed, great uddered females around here, and they can really produce

**RED TER-RON LAURYN 68F**

**72F**

HFX 72F 2072844 January 27 2018  
BW: 65 lbs Adj 205: 529 lbs Adj 365: 876 lbs

RED U-2 RECKONING 149A  
**RED U-2 REVERENCE 198C**  
RED U-2 LAKOTA 427Y

RED TER-RON PARKER 34A  
**RED TER-RON RACHEL 23D**  
RED TER-RON RACHEL 110Z

RED U-2 RECON 192Y  
RED U-2 ANEXA 271Y  
RED BDL UPROAR 124U  
RED FLYING K LAKOTA 104U  
TER-RON PARK PLACE 18Y  
RED TER-RON DIAMOND MIST 164Y  
RED ROYAL K-C DUKE 08R  
RED TER-RON RACHEL 115N

**BW: 1.6 WW: 35 YW: 57 Milk: 18 Total Mat: 34**

- Rachel 72F is a sale feature and for good reason...she is hard to pick apart
- Moderate framed and exhibits lots of style, depth, rib shape and femininity
- She really puts it all together and would be a good one for a junior to take to town
- Out of another good Parker first calver



**\$ 5,000**  
**OULTON FARMS**

**\$ 7,500**  
**RANCHO EL ERMITANO**



**73F**

**RED TER-RON HEATHER 73F**

HFX 73F 2037350 January 27 2018  
BW: 74 lbs Adj 205: 544 lbs Adj 365: 843 lbs

RED BAR-E-LANTHEM 46A  
**RED COMBEST JUGGERNAUT 1613D**  
RED BAR-E-L MEG 85N

RED LAZY MC KINGMAN 16W  
**RED TER-RON HEATHER 127B**  
RED TER-RON HEATHER 31Z

RED WHEEL ALLIANCE 22U  
RED BAR-E-L FRADO 209U  
RED YY RED KNIGHT 640F  
RED BAR-E-L MEG 035G  
RED RMJ REDMAN 1T  
RED LAZY MC MISS 67R  
RED ROYAL K-C DUKE 08R  
RED HIPS HEATHER 61U

**BW: 1.1 WW: 32 YW: 52 Milk: 18 Total Mat: 34**

- Heather 73F has cow written all over her
- Dark cherry red in colour, style to burn, stoutness, abundant eye appeal and hard to find a hole in
- Juggernaut did a tremendous job on both sexes, and we feel his daughters are going to be stellar. Future is bright for this young heifer... don't miss out



# \$ 3,000 PAUL DOBSON



79F

## RED TER-RON LAURYN 79F

HFX 79F 2037353 January 29 2018

BW: 82 lbs Adj 205: 573 lbs Adj 365: 920 lbs

RED U-2 RECKONING 149A  
**RED U-2 RENOWN 193C**  
RED U-2 ENVIOUS 147X

RED SIX MILE SURE SHOT 195Z  
**RED TER-RON LAURYN 178C**  
RED TER-RON LAURYN 56Y

RED U-2 RECON 192Y  
RED U-2 ANEXA 271Y  
RED U-2 DYNAMO 7021T  
RED U-2 ENVIOUS 216M  
RED SIX MILE WIN-CHESTER 745W  
RED STEWART DIXIE 607S  
RED TER-RON REALDEAL 01W  
RED TER-RON LAURYN 918N

**BW: 5 WW: 38 YW: 58 Milk: 19 Total Mat: 38**

- Lauryn is a female with a lot of mass, depth through her heart and flank, and width of top
- Lots of power and performance would be expected from this heifer, and will be very capable of raising herd sires
- We just calved out a maternal sister to 79F and she is a real beauty

92F

## RED TER-RON LUCY 92F

HFX 92F 2037356 February 01 2018

BW: 75 lbs Adj 205: 616 lbs Adj 365: 856 lbs

TER-RON PARK PLACE 18Y  
**RED TER-RON BAZINGA 13B**  
RED TER-RON AMBER 46W

RED U-2 BIG LEAGUE 544R  
**RED TER-RON LUCY 99X**  
RED TER-RON LUCY 15U

HF TIGER 5T  
RED TER-RON GOLDIE 240L  
RED TER-RON TOUCHDOWN 8S  
RED TER-RON AMBER 28P  
RED LCC MAJOR LEAGUE A502M  
RED U-2 ANEXA 09E  
RED TER-RON FULLY LOADED 540R  
RED DWAJO LUCY 86L

**BW: -0.4 WW: 38 YW: 47 Milk: 20 Total Mat: 39**

- If you get a chance to watch the video on Lucy 92F, you will absolutely fall in love with her
- She is clean fronted, long bodied, deep ribbed and moves like a cat
- The Bazinga sons and daughters are proving to be easy fleshing moderate cattle that are making their mark
- Lots of potential in this young female

# \$ 5,000 FOURWEST CATTLE CO



98F

## RED TER-RON ALYSSA 98F

HFX 98F 2037413 February 03 2018

BW: 82 lbs Adj 205: 632 lbs Adj 365: 969 lbs

RED TONGUE RIVER JUBILATION  
**RED FLYING K JULIAN 72Y**

RED TER-RON ALYSSA 151U  
RED TER-RON ALYSA 233M

RED TR JULIAN LT142  
RED TY DYNA ST669  
RED FLYING K JESSIE 741T  
RED FLYING K DYNAMO 111R  
RED TER-RON JULIAN 100  
RED LCC L CLASS 10J  
RED LAZY MC DIVIDE 8J  
RED TER-RON ASTER 733K

**BW: 4.8 WW: 41 YW: 65 Milk: 26 Total Mat: 47**

- Alyssa 98F is the only Julian daughter on offer this year
- We can't get enough of the Julian daughters as they are easy doing, good footed, and excellent uddered. Best of all they are great producers.
- Here is a brood cow in the making



CO



# \$ 3,000 PAUL DOBIBSON



120F

## RED TER-RON MISTY 120F

HFX 120F 2037367 February 09 2018  
BW: 84 lbs Adj 205: 586 lbs Adj 365: 846 lbs

RED U-2 RECKONING 149A  
**RED U-2 RENOWN 193C**  
RED U-2 ENVIOUS 147X

RED U-2 RECON 192Y  
RED U-2 ANEXA 271Y  
RED U-2 DYNAMO 7021T  
RED U-2 ENVIOUS 216M  
XO CROWFOOT 0102X  
RED CROWFOOT GOLDETTE 6314S  
RED U-2 BIG LEAGUE 544R  
RED TER-RON MISTY 63X

BW: 4.5 WW: 42 YW: 57 Milk: 20 Total Mat: 40

- Misty would definitely be considered a sale feature
- If you're looking for a show heifer or foundation female this would be a good pick
- Maternal sister to the high selling Reverence daughter that sold to Dennis Bjelland in last year's sale
- Dam is out of the red carrier Challenger bull that was purchased out of the Crowfoot dispersal with Towaw

## RED TER-RON ALICE 122F

122F

RPAH 122F 2072846 February 09 2018  
BW: 55 lbs Adj 205: 518 lbs Adj 365: 952 lbs

RED U-2 RECKONING 149A  
**RED U-2 RENOWN 193C**  
RED U-2 ENVIOUS 147X

RED TER-RON PARKER 34A  
**RED TER-RON ALICE 71C**  
RED TER-RON ALICE 7T

RED U-2 RECON 192Y  
RED U-2 ANEXA 271Y  
RED U-2 DYNAMO 7021T  
RED U-2 ENVIOUS 216M  
TER-RON PARK PLACE 18Y  
RED TER-RON DIAMOND MIST 164Y  
RED BRYLOR PANAMA 69P  
RED TER-RON ALICE 7R

BW: -1.4 WW: 29 YW: 57 Milk: 18 Total Mat: 35

- Hard to find a fault in this dark cherry red, moderate framed, easy fleshing, well balanced Renown daughter
- Calved out a full sister recently and it's hard to fault her udder
- An Alice daughter sold this past fall at Red Roundup to Compass Ranch at Cochrane

# \$ 4,750

## BROOKLYN CATTLE CO



GRP

137F

## RED TER-RON RACHEL 137F

HFX 137F 2037370 February 16 2018  
BW: 86 lbs Adj 205: 660 lbs Adj 365: 964 lbs

RED U-2 RECKONING 149A  
**RED U-2 RENOWN 193C**  
RED U-2 ENVIOUS 147X

RED U-2 RECON 192Y  
RED U-2 ANEXA 271Y  
RED U-2 DYNAMO 7021T  
RED U-2 ENVIOUS 216M  
RED BECKON 0102X  
RED JYJ 0102X  
RED BAKER APPROVAL 4L  
RED TER-RON RACHEL 315M

BW: 4.8 WW: 46 YW: 71 Milk: 21 Total Mat: 42

- Another Rachel daughter with lots of performance that will add substance and overall mass to your cow herd
- The Renown bull definitely adds rib, thickness, and solid feet to his progeny



Sharon made it to the mountains



**\$ 2,750**  
**PAUL DOBIMSON**

156F

# RED TER-RON HAWAMBA 156F

HFX 156F 2072845 February 24 2018

BW: 64 lbs    Adj 205: 535 lbs    Adj 365: 786 lbs

RED TWIN HERITAGE HUSTLE 25A  
**RED TER-RON CAPITAL 50C**  
 RED TER-RON LAURYN 918T

RED HOWE HUSTLE 13X  
RED TWIN HERITAGE CHER 293S  
RED BAR-E-L APPROVAL 4L  
RED TER-RON LAURYN 918J  
RED TER-RON CINCH 910L  
RED TER-RON JEWELL 822H  
RED K-C MR. E 143N  
RED TER-RON MAGGIE 10N

RED TER-RON OLYMPIAN 822P  
**RED TER-RON HAWAMBA 132W**  
 RED TER-RON MAGGIE 10S

**BW: -1   WW: 26   YW: 43   Milk: 19   Total Mat: 34**

- 156F is a moderate framed, very complete heifer that will make a very good cow
- Mother is a big, deep bodied, very broody female with an excellent foot
- Her dark red colour adds value

# RED TER-RON ALICE 159F

RPAH 159F 2037424 February 26 2018

BW: 66 lbs    Adj 205: 531 lbs    Adj 365: 849 lbs

RED BAR-E-L ANTHEM 46A  
**RED COMBEST JUGGERNAUT 1613D**  
 RED BAR-E-L MEG 85N

RED TER-RON WICKED 53Y  
**RED TER-RON ALICE 137A**  
 RED TER-RON ALICE 110U

RED WHEEL ALLIANCE 22U  
RED BAR-E-L FRADO 209U  
RED YY RED KNIGHT 640F  
RED BAR-E-L MEG 035G  
RED TER-RON REALDEAL 01W  
RED TER-RON BOBBIE 93T  
RED BAR-E-L APPROVAL 4L  
RED TER-RON ALICE 7N

**BW: 1.2   WW: 38   YW: 66   Milk: 14   Total Mat: 34**

- Alice is a very attractive, easy fleshing, well balanced female with lots of femininity
- Alice 137A is definitely a cow that visitors pick out when they visit the farm and was Reserve Champion Intermediate Junior Female at Farm Fair and Agribition in 2014
- We believe these Juggernaut females will make excellent cows

159F

**\$3,500**

# ANDY NIEDERER

GRP

178F

# RED TER-RON DUCHESS 178F

HFX 178F 2037385 March 14 2018

Adj 205: 543 lbs    Adj 365: 938 lbs

RED U-2 RECKONING 149  
RED U-2 RENOWN 193C  
RED U-2 ENVOUS 147X

RED U-2 RECON 192Y  
RED U-2 ANEXA 271Y  
RED U-2 DYNAMO 7021T  
RED U-2 ENVIGILUS 216M  
RED U-2 FALCON 18Y  
RED U-2 GHOST 164Y  
RED U-2 HAWK 69P  
RED U-2 MAC DUCHESS 31F

# DWAJO ANGUS

**BW: 4.8   WW: 39   YW: 62   Milk: 14   Total Mat: 33**

- Duchess is very typical of the Renowns with her extra rib shape, soft middle, and her overall body capacity
- Out of another Parker daughter that we have high expectations for



*Red Ter-Ron Parker 34A*  
*Sire of Lot 178F Dam*



# \$ 3,250 JAS RED ANGUS

182F

## RED TER-RON RACHEL 182F

HFX 182F 2037386 March 18 2018  
BW: 73 lbs Adj 205: 580 lbs Adj 365: 889 lbs

HF TIGER 5T  
**TER-RON PARK PLACE 18Y**  
RED TER-RON GOLDIE 240L

RED ROYAL K-C DUKE 08R  
**RED TER-RON RACHEL 110Z**  
RED TER-RON RACHEL 115N

HF KODIAK 5R  
HF ECHO 84R  
RED LAZY MC DIVIDE 8J  
RED TER-RON GOLDIE 240J  
RED SPRING CREEK HI HO 8K  
RED ROYAL DUCHESS 08L  
RED LAZY MC DIVIDE 8J  
RED TER-RON RACHEL 15J

**BW: -0.2 WW: 30 YW: 46 Milk: 17 Total Mat: 31**

- Wow.... a red Park Place daughter – we don't offer these up very often!!
- Look at her picture, then watch her video, and you can see why we are so high on this mid March female
- Rachel's moderate dam is the type you wish you had a whole herd of
- Expect big things from this girl

185F

# \$ 3,000

## RED TER-RON BONNIE 185F

HFX 185F 2037387 March 23 2018  
BW: 98 lbs Adj 205: 622 lbs Adj 365: lbs

RED U-2 RECKONING 149A  
**RED U-2 RENOWN 193C**  
RED U-2 ENVIOUS 147X

RED TER-RON OVERLOAD 117Z  
**RED AMBLER BONNIE 184C**  
RED FLYING K BEAUTY 125T

RED U-2 RECON 192Y  
RED U-2 ANEXA 271Y  
RED U-2 DYNAMO 7021T  
RED U-2 ENVIOUS 216M  
RED TER-RON REALDEAL 01W  
RED TER-RON ALYSA 3T  
RED FLYING K HERCULES 165P  
RED FLYING K BEAUTY 75M

**BW: 7.9 WW: 48 YW: 69 Milk: 20 Total Mat: 44**

- Youngest heifer in the sale, but she does not give up a thing!!
- She comes by her stoutness and overall body capacity honestly as her mother has all that and a bag of chips
- This young female will grab your attention when you walk into the pen

### Terms & Conditions

**Bidding:** Each animal will be sold to the highest bidder. Bidding disputes: The auctioneer will settle any disputes as to bids, and his decision on such matters shall be final.

**Terms:** The terms of the sale are cash or cheque. The right of property shall not pass until after settlement is made. All settlements will be made with the clerks of the sale immediately following the conclusion of the sale and before any cattle will be released from the sale facility. Each animal becomes the risk of the purchaser as soon as sold.

**Guarantee:** We guarantee you a sound breeding bull, if he fails to be a satisfactory breeder, we will replace him with a bull of equal value or credit towards the purchase of another bull. No refunds. Bulls are not guaranteed to freeze semen, if you have any problems with your purchase, contact us immediately.

**Insurance:** Will be available sale day. All bulls fed for the month of April are at the purchasers risk and must be insured.

**Liability:** All persons who attend the sale do so at their own risk. Neither owners, clerks, or anyone connected with the sale assumes any responsibility, legal or otherwise for damage of any kind.

**Announcements:** Changes of information contained in this catalog will be corrected by announcements from the block at sale time and shall take precedence over any printed matter.

**Semen:** Ter-Ron Farms reserves the right to collect semen on any bull sold through this sale for in herd use only. This semen will be collected at the buyers convenience and seller's expense.

**Delivery:** Delivery will commence in April. Please leave delivery instructions at time of settlement.

**Certificate of Registry:** A certificate of registry and transfer will be furnished for each animal after full payment has been made.

**Cattle inspection:** All cattle carry permanent ID tags corresponding to sale Lot numbers. All shall be available for inspection prior to sale.

**Females:** All females are guaranteed breeders. The standard CAA guarantee will apply





## Thanks to our 2018 Buyers

Byron Clarke  
 Meadow View Farms  
 Ian & Barb Proudfoot  
 Blaine Davidson  
 Jensen Angus  
 John Schmidt  
 Grote Ranch  
 Andy Niederer  
 Brett Twa  
 Santiago Debernardi  
 Wildor Farms  
 Moose Creek Red Angus  
 Cactus Coulee  
 Ken Crookes  
 North 40 Red Angus  
 Sunberry Valley Ranch  
 Ryan Hickie  
 J Lazy A Ranch  
 Wynton Brandl  
 Jeff & Monica Harvey  
 John Cheram  
 Combest Red Angus  
 Bill Leslie  
 Prairie Hall Farms  
 H Bar M  
 Ellwood Farms  
 Rebel Creek

Letniak Farms Ltd  
 Darrel Dzurko  
 Clifford & Shirley Ambler  
 Leslie Angus  
 Hugh Stewart Holdings  
 Cam Morris  
 Hadwin Cattle Company  
 Trevor Van Slyke  
 Keith Wittmack  
 Blairs.Ag  
 Coppock Legacy Farms  
 Adair Angus  
 Neu Muehl Farming Co.

W Sunrise Angus  
 Rack Red Angus  
 Reg & Cathy Minchau  
 Little Valley View Ranch  
 Boundary Ranch  
 Irwin Jewel  
 Stanley Bros.  
 Roger Thompson  
 Rick Gould  
 Darren Hannis  
 David & Norman Levitt  
 Bill Zimmer



**Ter-Ron Farms**  
**Box 634**  
**Forestburg, AB**  
**T0B 1N0**

*Please call or email if you would like to be  
removed from our mailing list.*



**TER-RON** 03.21.2019

*Bull & Select Female Sale*