

LIMOUSIN - ANGUS - SIMMENTAL



**ANCHOR B - ANCHORAGE**

*eighteenth annual bull and female sale*

# **Sale Results**

**28 BULLS AVERAGED \$5,143**

**6 PUREBRED HEIFERS AVERAGED \$4,408**

**Thursday, March 28, 2019 :: at the Anchor B Farm - Hanley, SK :: 1pm**

We would like to welcome you to the 18th Annual Anchor B/Anchorage Bull and Female Sale. During these years we privileged to have some great partners in the Limousin breed and have appreciated sharing our Bull Sale with them. Going forward B Limousin & Anchorage Farms will be the sole providers of Limousin, Angus, & Simmental Genetics.

The offering for 2019 is a very strong set of yearling and two year old bulls. We work hard every day to ensure we produce functional cattle that will work in the commercial and purebred industry. We have confidence these bulls will go out and work because we use these genetics in our cow herd ourselves. Our guarantee to you is that we will continue to work hard to select the best genetics to improve our herd.

Please check out our female offering. We feel these heifers are an excellent representation of our breeding and will have a big impact on the industry. These heifers are halter broke and ready for the 2019 CJLA Impact Show in Saskatoon and we would love to work with you in getting these heifers there, please talk to us about options.

In 2018 we moved our sale to the farm at Hanley, Sk. This has given us the opportunity to spend additional time with you about cattle and the beef industry. A decision we are happy to have made. We would also like to thank all of our past buyers for their previous & continuous support of our operation.

As well, all cattle are available for viewing at anytime as we would love to give you a tour. If you have any questions please call us a call anytime.

The Bohrson family look forward to hosting you, please join us on March 28nd, 2019!



have been  
ard, Anchor

duce sound  
ork for you  
ource new

ill make an  
be pleased

you to talk  
rs for their

please give

**BOHRSON**  
**welcome from the Bohrson family**

THURSDAY, MARCH 28, 2019  
**12 noon - Join us for Steak Dinner**  
**1 pm - Sale**

at the Anchor B Farm  
Hanley, SK

#### Sale Day Phones

» Jay Bohrson	306 544 7500
» Riley Bohrson	639 213 7777
» Martin Bohrson	306 220 7901
» Scott Bohrson	403 370 3010
» Taylor Richards	306 821 4169
» Rob Voice	306 361 6775

#### Sales Staff

» Col. Ryan Dorran, Auctioneer	403 507 6483
» Bryon Wolters, Ringman	780 581 8396
» Taylor Richards, Ringman	306 821 4169
» Cassie Dorran, Insurance Agent	403 507 5953

#### Terms & Conditions

- » Cattle will sell under the standard terms & conditions put forward from CSA & BMS. These are available upon request.

#### Insurance

- » Insurance will be available sale day.
- » Please insure your bull(s) if they are returning to our farm.

#### Terms

- » Cattle will sell according to the Terms and Conditions of the Canadian Limousin, Angus & Simmental Associations.

#### Guarantee

- » All bulls will be scrotal measured, semen tested, and sell as guaranteed breeders.

#### Delivery

- » We will transport your purchase to central locations in Western Canada & trucking arrangements to Eastern Canada or USA will be co-ordinated.
- » Bulls can remain at our farms until May 1 with no additional charge. These bulls must be insured.
- » All registered bulls carry registration papers, performance info, and EPDs.
- » Each owner reserves the right to collect semen on any of their bulls sold through this sale. The semen collection will be at the seller's expense and buyer's convenience. Any semen collected will be for in-herd use only.

#### Catalog design by Bohrson Marketing

- » The information printed has been supplied by the seller and believe to be accurate. Updated sheets and announcements from the block will take precedence over any incorrect printed material.

#### Online Viewing & Bidding

Direct Livestock Marketing Systems  
Mark Schologan 780-699-5082  
[www.dlms.ca](http://www.dlms.ca)



#### Sales Management

Bohrson Marketing Services Ltd.  
RR4 Site 7 Box 28 Olds, AB T4H 1T8  
403-940-3334 - [www.Bohrson.com](http://www.Bohrson.com)







**\$ 4,500**  
**JOHN & SUSAN**  
**JANZ**

**lot 1** **Anchor B FLEETWOOD MAC 22F** // Dbl Pled // 93% Limousin  
 JBH 22F // Jan 24, 2018 // CPM4095470

IVY'S BUBBA WATSON HTZ24B  
 sire: **B BAR AUSTIN HEALY 4D ET**  
 B BAR POLLED UNIQUE

ANCHOR B GREAT WEST  
 sire: **ANCHOR B ZIPPER**  
 ANCHOR B BLACK LEGACY

weights	CLA epds	CLA epds
bw 88	ce 16	ce 8
ww 650	rea 1.22	bw 1.4
yw 1099	yg -0.76	ww 58
	marb -0.54	yw 87
		milk 24
		sc 0.6
		doc 18

#### calving ease: use on cows, selective heifers

- » Fleetwood Mac has been a stand out since birth due to his muscle shape.
- » He is a moderate framed bull with eye appeal, stoutness, and a herd bull look.
- » We purchased his sire B Bar Austin Healy as our pick of the 16th Annual Bull Sale for \$15,000 with a goal to produce calves that looked just like Fleetwood Mac.
- » Dam is a former 4-H show heifer that has a beautiful udder in which we have come to expect from Anchor B Great West daughters (Highlight in 2010 Sale to Richmond Ranch)
- » Maternal brother sold to Jorneys End Ranch



**Sire of Lots 1 - 7**  
**B BAR AUSTIN HEALY 4D ET**



**Maternal brother**  
**ANCHOR B DRAMBUIE 22D**



**\$ 3,500**  
**DALLAS BESSEY**

**lot 2** **Anchor B FRESH PRINCE 89F** // Polled // 94% Limousin  
 JBH 89F // Feb 25, 2018 // CPM4095492

IVY'S BUBBA WATSON HTZ24B  
 sire: **B BAR AUSTIN HEALY 4D ET**  
 B BAR POLLED UNIQUE

ANCHOR B "THE BOSS"  
 sire: **ANCHOR B BROOKLYN 33B**  
 ANCHOR B POLL KARI 4K

weights	CLA epds	CLA epds
bw 86	ce 8	ce 8
ww 776	rea 1.37	bw 2.3
yw 1217	yg -0.84	ww 70
	marb -0.56	yw 102
		milk 22
		sc 0.82
		doc 21

#### calving ease: use on cows

- » Fresh Prince is a feature of our Limousin program with our deepest pedigree
- » Another Austin Healy son who displays depth & length of body second to none.
- » His dam is a direct daughter of Anchor B "THE BOSS" and you will continue to see daughters throughout the catalogue that just keep working.
- » Also going back to our proven donor female Anchor B Kari who continues to add tremendous performance & style.
- » Check out the production data in a 776 lb WW & 1217 lb YW on this late February bull.



**Maternal Grandsire of Lot 2**  
**ANCHOR B "THE BOSS"**



**Maternal Grandam of Lot 2**  
**ANCHOR B POLL KARI 4K**



# \$ 4,750 CREEK VIEW FARMS

**lot 3** Anchor B **FIREBALL 57F** // Double Polled // 93% Limousin

JBH 57F // Feb 6, 2018 // CPM4095478

IVY'S BUBBA WATSON HTZ24B  
sire: **B BAR AUSTIN HEALY 4D ET**  
B BAR POLLED UNIQUE

ANCHOR B "THE BOSS"  
sire: **ANCHOR B BAILEY 21B**  
ANCHOR B ZAHARA

## calving ease: use on cows, selective heifers

- » Fireball is big hiped, stout made and has lots of hair
- » He is smooth fronted & wide topped.
- » This mating was the most exciting one we had palnned when we purchased Austin Healy as his dam, Anchor B Bailey is a donor female who continues to produce. She is another Boss daughter will great udder shape.
- » Maternal sister was 2018 CWA Senior Calf Reserve Champion
- » Maternal brother 2017 high seller to Stewart Farming Ltd

weights	CLA epds	CLA epds
bw	86	11
ww	739	1.36
yw	1139	-0.82
		marb
		-0.57
		yw
		99
		milk
		25
		sc
		0.75
		doc
		21



# OUT OF SALE

**lot 4** Anchor B **FRANCO 78F** // Double Polled // 94% Limousin

JBH 78F // Feb 18, 2018 // CPM4095482

IVY'S BUBBA WATSON HTZ24B  
sire: **B BAR AUSTIN HEALY 4D ET**  
B BAR POLLED UNIQUE

ANCHOR B "THE BOSS"  
sire: **ANCHOR B AUGUSTA 16A**  
ANDERS NIKKI

## calving ease: use on cows

- » Long sided, heavy haired
- » Square made, smooth fronted
- » Out of a Boss daughter
- » Maternal brothers have sold to Dave Warren and Earl Bourhis

weights	CLA epds	CLA epds
bw	97	5
ww	650	1.38
yw	1103	-0.86
		marb
		-0.55
		yw
		89
		milk
		23
		sc
		0.65
		doc
		21



**Dam of Lot 3**  
ANCHOR B BAILEY 21B



**Maternal Brother of Lot 3**  
ANCHOR B DONALDSON 34D



**Maternal Brother of Lot 4**  
ANCHOR B EVAN 61E



**Maternal Brother of Lot 4**  
ANCHOR B CHARLSTON 50C





**Lot 7** Anchor B **FLINT** 39F // Horned // 94% Limousin

JBH 39F // Jan 30, 2018 // CPM4095473

IVY'S BUBBA WATSON HTZ24B  
sire: **B BAR AUSTIN HEALY 40 ET**  
B BAR POLLED UNIQUE

ANCHOR B "THE BOSS"  
dam: **ANCHOR B BOMBSHELL 19B**  
HIGHLAND PIXIE DUST

**calving ease: use on cows**

- » Long sided, moves well
- » Performance bull
- » Maternal brother sold to Journeys End Ranch

weights	CLA epds	CLA epds
bw	CW	ce
92	11	8
ww	rea	bw
734	1.35	2.2
yw	yg	ww
1138	-0.83	67
	marb	yw
	-0.59	98
		milk
		26
		sc
		0.68
		doc
		21



**Lot 8** Anchor B **FREDDY** 63F // Double Polled // 91% Limousin

JBH 63F // Feb 8, 2018 // CPM4095435

HUNT TESTAMENT 40T  
sire: **HUNT CREDENTIALS 37C ET**  
JKTW WHISKEY RIVER 985 W

WULFS AMAZING BULL T341A  
dam: **ANCHOR B DISNEY 16D**  
ANCHOR B WINNER

**Calving ease: use on heifers**

- » Long bodied, thick, lots of hair
- » Moderate frame, very docile
- » Out of a first calf heifer
- » Credentials calves look great and have been widely accepted
- » Guaranteed calving ease in this pedigree

weights	CLA epds	CLA epds
bw	CW	ce
64	35	15
ww	rea	bw
641	1.14	-1.3
yw	yg	ww
1040	-0.64	60
	marb	yw
	-0.17	94
		milk
		23
		sc
		1.21
		doc
		20



Maternal Brother of Lot 7  
ANCHOR B DENVER 30D



Full sister to dam of Lot 7  
JBH 23B SOLD TO B BAR CATTLE CO.



Full sib to dam of Lot 8  
JBH 20E SOLD TO COCHRANE FARMS



Maternal Grandsire of Lot 8  
WULFS AMAZING BULL T341A



**\$ 4,000**  
**EARL BOURHIS**

**Int 9** **Anchor B FENTON 45F** // Double Polled // 92% Limousin  
JBH 45F // Feb 1, 2018 // URM4095434

COLE ARCHITECT 08A  
sire: **NYK DESIGNER 100**  
CAM POLL YOUNG PEGGY

ANCHOR B "THE BOSS"  
dam: **ANCHOR B CALLIE 15C**  
TOP MEADOW 1P

weights	CLA epds	CLA epds
bw 74	cw 11	ce 12
ww 736	rea 1.17	bw 0
yw 1208	yg -0.74	ww 70
	marb -0.64	yw 101
		milk 21
		sc 0.62
		doc 11

#### calving ease: use on heifers or cows

- » Fenton is a very interesting breeding piece.
- » We purchased sire NYK Designer in the Campbell Limousin sale in 2017 and have been very impressed with his calves.
- » Tremendous EPDs from birth to yearling
- » Long spine, smooth made, lots of muscle
- » Another top quality Boss daughter proving herself
- » Full brother to dam was our high seller in 2015 to Campbell Limousin



Full brother of Lot 9  
ANCHOR B BENTLEY 4B



Sire of Lot 9, 10, 11, 12  
NYK Designer 100



**\$ 3,500**  
**M & D BOHRSON**

**Int 10** **Anchor B FRANK 88F** // Het Polled (T) // 69% Limousin  
JBH 88F // Feb 24, 2018 // URM4095484

COLE ARCHITECT 08A  
sire: **NYK DESIGNER 100**  
CAM POLL YOUNG PEGGY

TMCK DURHAM WHEAT 6030X  
dam: **RIVERSTONE CHEERLEADER**  
HIGHLAND BARBARA 9Y

weights	CLA epds	CLA epds
bw 84	cw 26	ce 11
ww 779	rea 0.89	bw 1.4
yw 1283	yg -0.43	ww 74
	marb -0.35	yw 107
		milk 21
		sc
		doc 17

#### calving ease: use on cows, selective heifers

- » Frank will catch your eye on sale day.
- » He is long bodied and deep sided
- » His dam is a modest, hard working female that we appreciate
- » Maternal brother was a sale feature in 2018 & sold to Delbert Warren. Frank will be following in his brother's footsteps.



Maternal brother of Lot 10  
ANCHOR B EDWIN 62E



Gransire of Lot 10  
TMCK DURHAM WHEAT 6030X



# OUT OF SALE



**Lot 11 Anchor B FIRESTONE 68F** // Double Polled // 46% Limousin  
JBH 68F // Feb 10, 2018 // URM4095460

COLE ARCHITECT 08A  
sire: **NYK DESIGNER 100**  
CAM POLL YOUNG PEGGY

BR MIDLAND  
dam: **TRIPLE L LADY MIDLAND 18P**  
TRIPLE L BROOKELYN 5M

**calving ease: use on cows**

- » Powerful Limflex bull
- » Firestone combines the Limousin muscle and Angus natural depth of body into a very attractive package
- » Dam is a many time proven Angus dam

weights	CLA epds	CLA epds
bw	CW	CE
96	23	9
ww	rea	bw
668	0.58	2.4
yw	yg	ww
1082	-0.22	66
	marb	yw
	-0.02	100
		milk
		16
		sc
		doc
		9

# \$ 3,500 TRACY GADER



**Lot 12 Anchor B FOREIGNER 26F** // Double Polled // 93% Limousin  
RBH 26F // Jan 26, 2018 // URM4095429

COLE ARCHITECT 08A  
sire: **NYK DESIGNER 100**  
CAM POLL YOUNG PEGGY

RICHMOND SLUGGER SRD 42S  
dam: **RICHMOND ZOIE SRD 22**  
RPY PERFECT STORM 10R

**calving ease: use on cows**

- » Long bodied, square made
- » Out of a proven Richmond cow who milks well
- » Maternal brother sold to Tracy Gader

weights	CLA epds	CLA epds
bw	CW	CE
80	23	7
ww	rea	bw
595	1.22	3.4
yw	yg	ww
1076	-0.72	75
	marb	yw
	-0.61	114
		milk
		17
		sc
		0.7
		doc
		10



Maternal Brother of Lot 11  
ANCHOR B DALTON 65D



Avery at 2018 Junior Ag Showcase



Grandsire of Lot 12  
RICHMOND SLUGGER SRD 42S



Grandam of Lot 12  
RPY PERFECT STORM 10R

Angus Extra-Age Bulls :: SimAngus Yearling Bulls :: Simmental Yearling Bulls :: SimAngus Extra-Age Bulls





**lot 13 Anchor B FLO RIDA 4F** // Double Polled // 92% Limousin

JBH 4F // Jan 11, 2018 // CPM4095461

MRL X-RATED 014X  
sire: **COLE ARCHITECT 08A**  
COLE MISS LODESTAR 826U

HIGHLAND PLD PAVAROTI  
dam: **LIMOLYN UNTAINTED**  
LIMOLYN REAL TIME

**calving ease: use on cows**

- » Biggest frame most powerful bull in offering
- » Flo Rida is heavy muscled, smooth made and quiet
- » Architect is proven in the breed

weights	CLA epds	CLA epds
bw 94	CW 27	ce 7
ww 686	rea 1.18	bw 3
yw 1088	yg -0.66	ww 84
	marb -0.61	yw 120
		milk 13
		sc 1
		doc 10



**lot 14 Anchor B FITZ 38F** // Double Polled // 70% Limousin

JBH 38F // Jan 30, 2018 // CXM4095432

KAJO RESPONDER 120R  
sire: **RPY PAYNES DERBY 46Z**  
IVY'S POLLED PRINCESS 1P

HSF WAT-CHA SWINGERS CLUB  
dam: **PINNACLE'S LF ASTER 1301A**  
DCW ROSEBUD 1Y

**calving ease: use on cows**

- » Round hipped
- » Smooth made

weights	CLA epds	CLA epds
bw 98	CW 15	ce 7
ww 703	rea 0.85	bw 3.2
yw 1090	yg -0.53	ww 62
	marb -0.3	yw 96
		milk 20
		sc
		doc -1



**Sire of Lot 13**  
COLE ARCHITECT 08A



**Avery at Young Ranchmans, SC**



**Sire of Lot 14**  
RPY PAYNES DERBY 46Z



**Dam of Lot 14**  
PINNACLE'S LF ASTER 1301A

**Limousin Yearling Bulls :: Limousin Extra-Age Bulls :: Limousin Open Heifers :: Angus Yearling Bulls :: Ang**



**\$ 4,500**  
**BILL EPP**

**Int 15** Anchor B **ESPOSITO** 130E // Double Polled // 94% Limousin

JBH 130E // April 16, 2017 // CPM4090071

WULFS TIBON T750T  
sire: **ANCHOR B "THE BOSS"**  
ANCHOR B URBAN GIRL

TMF WESTWOOD 505W  
dam: **CAM POLL AMARYLLIS**  
CAM POLL PANSY

weights	CLA epds	CLA epds
bw	CW	CE
82	5	8
ww	rea	bw
711	1.26	1.9
yw	yg	ww
1158	-0.84	66
	marb	yw
	-0.54	100
		milk
		25
		sc
		0.9
		doc
		17

#### calving ease: use on cows

- » Powerful two year old April born virgin bull
- » Heavy muscled, long bodied stout
- » Boss continues to stamp his sons with muscle shape and Esposito will catch your eye.



**\$ 4,500**  
**DALLAS BESSEY**

**Int 16** Anchor B **ESTRADA** 131E // Double Polled // 92% Limousin

JBH 131E // April 18, 2017 // CPM4090072

WULFS TIBON T750T  
sire: **ANCHOR B "THE BOSS"**  
ANCHOR B URBAN GIRL

WZRK MR HUNT 775M  
dam: **HIWAYS UNBELIEVABLE**  
WULFS GREATLY 7248G

weights	CLA epds	CLA epds
bw	CW	CE
86	2	11
ww	rea	bw
667	1.19	0.3
yw	yg	ww
1052	-0.82	55
	marb	yw
	-0.51	82
		milk
		23
		sc
		0.2
		doc
		11

#### Calving ease: use on heifers or cows

- » Moderate frame, wide topped
- » Square made easy doing
- » His dam is a deep bodied proven cow we purchased at Western Select Sale in Lloydminster.



**Sire of Lots 15, 16**  
NAME NAME NAME NAME



**Dam of Lot 15**  
CAM POLL AMARYLLIS



**Dam of Lot 16**  
HIWAYS UNBELIEVABLE



**Taking a break**





**\$ 6,750**  
**CARPENTER**  
**CATTLE CO**

**lot 17** Anchor B **ELDORADO** 121E // Double Polled // 93% Limo

JBH 121E // April 8, 2017 // CPM4092348

RCN ZEPLIN  
sire: **RCN BOJANGLES**  
RCN ZENA

ANCHOR B GREAT WEST  
dam: **ANCHOR B ZAHARA**  
ANCHOR B RIKKI 41X

weights	CLA epds	CLA epds
bw	CW	CE
79	10	12
ww	rea	bw
690	1.06	-0.6
yw	yg	ww
1081	-0.75	50
	marb	yw
	-0.5	76
		milk
		22
	sc	0.5
	doc	7

#### Calving ease: use on heifers or cows

- » Tremendous bull with muscle shape and depth of body
- » Calving ease dream out of our best cow family, Zahara is dam of Anchor B Bailey
- » Utilized RCN Bojangles for 4 years successfully on heifers
- » We utilized Eldorado with a select group of April calving heifers in 2018



**\$ 6,250**  
**JOEL TAYLOR**

**lot 18** Anchor B **EDGAR** 122E // Double Polled // 93% Limousin

JBH 122E // April 8, 2017 // CPM4092349

RCN ZEPLIN  
sire: **RCN BOJANGLES**  
RCN ZENA

ANCHOR B "THE BOSS"  
dam: **ANCHOR B BLACK LACE 31B**  
ANCHOR B ZIPPER

weights	CLA epds	CLA epds
bw	CW	CE
75	8	13
ww	rea	bw
722	1.13	-1.8
yw	yg	ww
1110	-0.78	50
	marb	yw
	-0.51	74
		milk
		24
	sc	0.60
	doc	10

#### Calving ease: use on heifers or cows

- » Moderate frame, lots of muscle
- » Very complete bull
- » Dam is a maternal brother to lot 1



**Dam of Lot 17**  
**ANCHOR B ZAHARA**



**Maternal sister to Lot 17**  
**ANCHOR B BAILEY**



**Sire of Lots 17, 18, 19**  
**RCN BOJANGLES**



**CWA 2018**



**Lot 19** Anchor B **EBERLE** 76E // Double Polled // 93% Limousin

JBH 76E // Feb 25, 2017 // CPM4092341

RCN ZEPLIN  
sire: **RCN BOJANGLES**  
RCN ZENA

KOYLE APACHE 8A  
dam: **ANCHOR B CAROLINA 41C**  
ANCHOR B ZAHARA

**calving ease: use on cows**

» Stout, attractive two-year-old bull to cover cows

weights	CLA epds	CLA epds
bw 90	cw 10	ce 9
ww 636	rea 1.03	bw 2.2
yw 1175	yg -0.73	ww 54
	marb -0.47	yw 84
		milk 19
		sc 0.42
		doc 6



**Lot 20** Anchor B **EBENEZER** 141E // Double Polled // 93% Limousin

JBH 141E // May 20, 2017 // CPM4090073

EXLR TOTAL IMPACT 054T  
sire: **KOYLE APACHE 8A**  
EF TICKLE MY FANCY 570T

AMAGLEN UMPIRE MAN  
dam: **CAM POLL ALEXANDRA**  
CAM POLL WEATHERVANE

**calving ease: use on cows**

» Long bodied, strong topped bull to cover cows.

» May born 2 year with good performance

» Maternal brother sold to Greg Trewin

weights	CLA epds	CLA epds
bw 82	cw 11	ce 12
ww	rea 0.98	bw 1.5
yw	yg -0.70	ww 59
	marb -0.41	yw 95
		milk 21
		sc 0.18
		doc 6



2018 Anchor B/Anchorage Bull Sale



CJLA Impact 2018

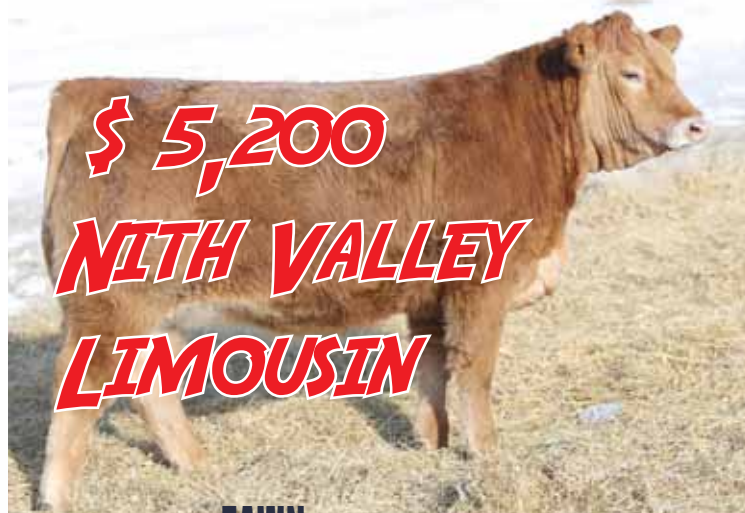


Sire of Lot 20  
KOYLE APACHE 8A



Maternal brother of Lot 20  
ANCHOR B CLEVELAND 44C





# \$ 5,200 NITH VALLEY LIMOUSIN

lot 21 Anchor B FAWN 13F // Double Polled // 93% Limousin

JBH 13F // Jan 19, 2018 // CPF4095468

IVY'S BUBBA WATSON HTZ24B  
sire: **B BAR AUSTIN HEALY 4D ET**  
B BAR POLLED UNIQUE

ANCHOR B "THE BOSS"  
dam: **ANCHOR B BEAUTY 2B**  
ANDERS MILA

weights	CLA epds	CLA epds
bw 68	ce 6	10
ww 609	rea 1.34	bw 0.2
yw 929	yg -0.85	ww 57
	marb -0.59	yw 83
		milk 26
		sc 0.62
		doc 12



# \$ 3,000 JOURNEY'S END

lot 22 Anchor B SO FANCY 17F // Double Polled // 94% Limousin

JBH 17F // Jan 21, 2018 // CPF4095469

IVY'S BUBBA WATSON HTZ24B  
sire: **B BAR AUSTIN HEALY 4D ET**  
B BAR POLLED UNIQUE

ANCHOR B "THE BOSS"  
dam: **ANCHOR B CANDY CRUSH 12C**  
ANCHOR B KATRIX

weights	CLA epds	CLA epds
bw 65	ce 9	10
ww 616	rea 1.4	bw 0.8
yw 901	yg -0.85	ww 59
	marb -0.58	yw 87
		milk 27
		sc 0.84
		doc 15

- » These two Austin Healy daughters continue to impress us with their muscle shape and depth of body. Being our first offering of Austin Healy's & both out of Anchor B "THE BOSS" daughters who continue to produce, we feel these heifers exemplify what our cowherd has to offer. Longevity is built in to these pedigrees and check out the EPDs. Breed these heifers many ways and you will be impressed.
- » They will be ready for CJLA Impact 2019 in Saskatoon for Juniors that are interested, but most importantly they will make cows.



Sire of Lots 21 & 22  
B BAR AUSTIN HEALY 4D ET



Full brother of dam of lot 21  
ANCHOR B ALABAMA 8A SOLD TO TOTH FARMS



Maternal Grandsire of lot 21, 22, 24  
ANCHOR B "THE BOSS"



Full brother of dam of Lot 22  
ANCHOR B ENDER 10GE SOLD TO MARTENS LIVESTOCK



**Lot 23 Anchor B FLASHBACK 28F** // Double Polled // 92% Limb

JBH 28F // Jan 26, 2018 // CPF4095430

HUNT TESTAMENT 40T  
sire: **HUNT CREDENTIALS 37C ET**  
JKTW WHISKEY RIVER 985 W

WULFS AMAZING BULL T341A  
dam: **ANCHOR B DESTINY 33D**  
ANCHOR B SHERIDAN

weights	CLA epds	CLA epds
bw	ce	ce
82	36	12
ww	rea	bw
630	1.08	1.6
yw	yg	ww
917	-0.62	71
	marb	yw
	-0.15	110
		milk
		22
		sc
		1.2
		doc
		13

» Flashback is a Credentials out of a first calf heifer. We love this heifer for her depth of body, muscle shape and eye appeal. Credentials needs no introduction as we have seen what his females can do & they have begun milking beautifully. Granddam Anchor B Sheridan continues to produce females that work, selling to Hawkeye Land & Cattle (CWA 2018 & Anchor B Bull Sale 2018) and Payne Livestock (Brandon National 2017).

» This heifer will be able to compete at the CJLA Impact 2019.



**Sire of Lots 23, 24, 25**  
**HUNT CREDENTIALS 37C**



**Daughter of granddam**  
**ANCHOR B FLORA 91F**



**Lot 24 Anchor B FAREWELL 206F** // Double Polled // 92% Limb

JBH 206F // April 25, 2018 // CPF4095443

HUNT TESTAMENT 40T  
sire: **HUNT CREDENTIALS 37C ET**  
JKTW WHISKEY RIVER 985 W

ANCHOR B "THE BOSS"  
dam: **ANCHOR B DAMSEL 41D**  
MSC SWEET LUCKY 59S

weights	CLA epds	CLA epds
bw	ce	ce
70	31	13
ww	rea	bw
	1.08	-0.3
yw	yg	ww
	-0.65	62
	marb	yw
	-0.19	94
		milk
		23
		sc
		0.8
		doc
		16

» Farewell is another Credentials heifer out of a first calver. A little different spin here as we are offering an April 25 born heifer that can hold her own. She is stylish and is developing better than expected. Powerful, moderate framed and extremely feminine.

» Another pedigree with longevity built in. She will compete in the showing & develop to be a front pasture female.



**Full brother of dam of Lot 24**  
**ANCHOR B EASTWOOD SOLD TO GRANT MILLER**



**2018 Young Ranchmans, SC**  
**HUNT CREDENTIALS X ANCHOR B BAILEY**





**\$ 5,250**  
**EDEN MEADOWS**

**Int 25** Anchor B **FIREFLY** 5F // Homo Polled (P-1) // 91% Limousin  
JBH 5F // Jan 12, 2018 // CPF4095425

HUNT TESTAMENT 40T  
sire: **HUNT CREDENTIALS 37C ET**  
JKTW WHISKEY RIVER 985 W

RPY PAYNES BEAST 25B  
dam: **RPY PAYNES DIXIE 55D**  
RPY PAYNES ALISSA 30A

weights	CLA epds	CLA epds
bw 75	cw 35	ce 11
ww 610	rea 0.99	bw 1.7
yw 902	yg -0.58	ww 66
	marb -0.12	yw 105
		milk 23
		sc 0.91
		doc 14

- » RPY Paynes Dixie was our pick of the bred heifers at the top of the 2017 Western Select Sale in Lloydminster. Firefly was the resulting progeny out of Credentials. This heifer is flawless in her design, and outstanding in her pedigree. We are very excited for the future of this female.
- » Halterbroke & ready for CJLA 2019.



**Dam of Lot 25**  
RPY PAYNES DIXIE 55D



» 2018 CJLA Show Fun in Nova Scotia



**\$ 3,000**  
**BOB PHIBBS**

**Int 26** Anchor B **FATE** 10F // Double Polled // 92% Limousin  
JBH 10F // Jan 17, 2018 // URF4098448

COLE ARCHITECT 08A  
sire: **NYK DESIGNER 10D**  
CAM POLL YOUNG PEGGY

AMAGLEN XACT  
dam: **CAM POLL ANITA**  
CAM POLL XTRAVAGANZA

weights	CLA epds	CLA epds
bw 80	cw 20	ce 8
ww 602	rea 1.25	bw 3.5
yw 905	yg -0.73	ww 78
	marb -0.62	yw 112
		milk 16
		sc 0.47
		doc 7

- » We have been very impressed with the NYK Designer calves as noted in our bull section and wanted to offer you our best NYK female. She caught our eye all summer in the pasture with her depth of body & natural fleshing. Fate is a true powerhouse.

**SAVE THE DATE**  
2019 Canadian Junior Limousin Impact Show

**LIMOUSIN Impact**

**JULY 18-21 2019**

For more information  
cjlalimousin.com

PrairieLand Park  
Saskatoon, SK





## The History of Anchorage

Anchorage Farms originated in the late 1940's with Tom & Gladys Bohrsen. Tom served in WWII in the navy as a Chief Petty Officer, and upon returning to Hanley and marrying Gladys, named their farm "Anchorage Farm", in tribute to Tom's navy years. They raised purebred Hereford cattle in the 1960's. Their third son, Martin and wife Donna began breeding Limousin cattle in 1974, as "Anchor B Limousin". Their three sons, Aaron, Jay & Scott were raised with a love of livestock and spent many years in 4H. Jay and wife Beverly continue to breed Limousin, and Scott and wife Rebecca have founded "Bohrson Marketing Services", and invested in Angus and Simmental stock. Aaron and wife Sherri are also invested in the Angus division of Anchorage. The fourth division is now active and the three families look forward to building a progressive Angus program together from the very best cow families in the industry.







**Lot 27** Anchorage **CASH ANGEL 8711** // Angus

BOHR 711F // Mar. 2, 2018 // 256873

BARSTOW CASH  
sire: **STYLES CASH R400**  
PLAINVIEW LASSIE 71B

S A V NET WORTH 4200  
dam: **WERNER BLACK ANGEL 1299**  
CLEARWATER BLACK ANGEL 395

weights	CAA epds	CAA epds
bw 89	rea .51	ce 4.0
ww 734	cw 46	bw 1.9
act 1210	marb .56	ww 51
	fat .015	yw 99
		milk 22
		tm 47
		mce 7.5

#### calving ease: use on cows

- » big time herd sire here as he is one of the few Cash R400 calves in Canada, his full brother was Reserve National Junior Champion Angus Bull
- » his dam is one of the best donors in the business and never misses - the ideal cow that you want your future herd sire to be out of
- » Cash Angel has extra flexibility and athleticism in his movement with eye appeal, stoutness, shape and overall completeness on a solid foot
- » new fresh genetics as this ET calf was born in the USA because the embryos aren't exportable to Canada
- » invest with confidence as this guy is a very complete individual



**Dam of Lot 27**  
**WERNER BLACK ANGEL 1299**



**\$30,000 Maternal Sister to Lot 27**  
**BROOKING BLACK ANGEL 6017**



**Lot 28** Anchorage **BANK DRAFT 8140** // Angus

BOHR 140F // Jan. 24, 2018 // 2076258

CONNELLY EARNAN 076E  
sire: **BROOKING BANK NOTE 4040**  
E A ROSE 91B

COLEMAN REGIS 904  
dam: **COLEMAN DONNA 1223**  
COLEMAN DONNA 801



weights	CAA epds	CAA epds
bw 89 ET	rea 0.47	ce 6.5
ww 718	cw 34	bw 1.9
yw 1199	marb 0.34	ww 58
	fat 0.36	yw 100
		milk 21
		tm 50
		mce 9.0

#### calving ease: use on cows

- » awesome pedigree and very complete bull that is deep, smooth, long made and extended through the front end
- » his dam, Donna 1223 is an influential donor that is beautiful udder and highly maternal
- » the maternal sib, Donna 6205 commanded \$23,000 to Everblack/Allandale in the Angus Collection and they have reported back strong reviews
- » Bank Note is commended for his awesome breeding potential and here is one that is combined to one of the most powerful cow families in the industry



**Dam of Lot 28**  
**COLEMAN DONNA 1223**



**\$23,000 Maternal Sister to Lot 28**  
**COLEMAN DONNA 6205**



**Lot 29** Anchorage **TRENDSEEKER** 8011 // Angus  
BOHR 11F // JAN 18, 2018 // 256874

BROOKING BANK NOTE 4040  
sire: **BROOKING TRENDSPOTTER 6166**  
S00 LINE ANNIE K 9165

VIN-MAR RIGHT NOW  
dam: **EXAR MISS BEAUTY 4023**  
EXAR MISS BEAUTY 3349

weights	CAA epds	CAA epds
bw	rea	ce
78	0.35	9.0
ww	cw	bw
754	34	1.4
act	marb	ww
1195	0.47	53
	fat	yw
	0.41	96
		milk
		20
		tm
		n/a
		mce
		11.5

#### calving ease: use on heifers or cows

- » this is the exact bull we are trying to produce at Anchorage Farms and offer to the industry
- » he combines the phenotype, genotype and solid numbers that will be a very good breeding piece to build around
- » his sire, Trendspotter is evolving into a breeding sensation and is on the rise as one of the most valuable breeding pieces in the industry
- » the dam was purchased as a feature female in the Big Event from Express Ranches and is a productive and attractive female with a strong foot and excellent udder
- » Trendseeker is one to truly appreciate when you lay eyes on him as he has the herd bull presence and overall completeness in a fault free package
- » we are very proud of the breeding potential this bull has in store



**Sire of Lot 29**  
BROOKING TRENDSPOTTER 6166



**Grandam of Lot 29**  
S00 LINE ANNIE K 9165



**Lot 30** Anchorage **DENSITY** 8007 // Angus  
BOHR 7F // Jan. 14, 2018 // 2076221

S A V 8180 TRAVELER 004  
sire: **S A V 004 DENSITY 4336**  
S A V MAY 7238

CONNELLY CONSENSUS 7229  
dam: **PF 7229 LUCY 2555**  
EXAR LUCY 0905

weights	CAA epds	CAA epds
bw	rea	ce
80	0.45	4.5
ww	cw	bw
635	3436	2.5
yw	marb	ww
1104	0.57	53
	fat	yw
	.016	90
		milk
		25
		tm
		n/a
		mce
		4.0

#### calving ease: use on mature heifers or cows

- » keep every female from this bull and build a program around these strong udder and highly productive genetics
- » his sire, Density needs no introduction as he is in our mind, the best female maker in the entire industry
- » the dam was purchased in Oklahoma and is a female that will soon be incorporated into the donor program
- » with Density on the top side and Consensus, Upward, Future Direction and 602C on the bottom - you will be investing in proven genetics
- » with just a 80 pound bw, we feel he will calve very well and not sacrifice performance



**Dam of Lot 30**  
PF 7229 LUCY 2555



**Sire of Lot 30**  
S A V 004 DENSITY 4336





**\$ 7,500**  
**TAYLOR GEHL**

**lot 31 Anchorage EAST SIDE 7193 // Angus**

BOHR 193E // April 1, 2017 // pending

WILBAR EASTWOOD 200X  
sire: **ANDERSON EASTWOOD 1407**  
SOO LINE LADY 9420

S A V INTERNATIONAL  
dam: **ANCHORAGE BLACK ANGEL**  
WERNER BLACK ANGEL 1299

weights	CAA epds	CAA epds
bw	rea	ce
82	n/a	5.5
ww	cw	bw
584	n/a	1.7
yw	marb	ww
1250	n/a	41.5
	fat	yw
	n/a	77
		milk
		24.5
		tm
		45.5
		mce
		6.8

### calving ease: use on mature heifers or cows

- » we are very proud to offer this bull and a prime example of what we will strive to produce in the industry moving forward
- » awesome cow family with the great 1299 donor on the bottom side and his direct dam, 5193 is destined to be in the donor pen as well
- » his sire is a calving ease specialist and is an easy doing, tank of a breeding piece with his sons weaning heavy and daughters making excellent production females
- » East Side has the presence of a true herd bull with an attractive, masculine front end with a tonne of power throughout in a deep rib cage and stout, square him standing up on a strong set of feet
- » this is an individual that wraps it all together awfully well



**Dam of Lot 31**  
WERNER BLACK ANGEL 1299



**Paternal Brother of Lot 31**  
ANCHORAGE EASTWOOD 6196



**\$ 3,500**  
**YUZYK CATTLE CO**

**lot 32 Anchorage DARK ANGEL 7161 // Angus**

BOHR 161E // May 30, 2017 // 256870

BARSTOW CASH  
sire: **STYLES CASH R400**  
PLAINVIEW LASSIE 71B

S A V NET WORTH 4200  
dam: **WERNER BLACK ANGEL 1299**  
CLEARWATER BLACK ANGEL 395

weights	CAA epds	CAA epds
bw	rea	ce
85	0.51	4.0
ww	cw	bw
705	46	1.9
yw	marb	ww
1185	0.56	51
	fat	yw
	.015	99
		milk
		22
		tm
		47
		mce
		7.5

### calving ease: use on mature heifers or cows

- » we flushed the great 1299 to Cash R400 and also bred her back that way at Transova, South Dakota prior to bringing her back in calf which resulted in Dark Angel being her natural calf at side
- » Only 4 Cash R400 progeny have ever been submitted in the CAA - Dark Angel 7161 himself plus 2 of his full brothers (one being Lot 27 and the other being KCH Cash Flow who was the Reserve National Junior Champion Bull) plus a 4th bull that was born in the USA and brought up by Schwan Angus
- » these are truly unique genetics and a bull that is long, smooth and very complete
- » keep every female from this mating as they are destined to be excellent producers



**Sire of Lot 32**  
STYLES CASH R400



**Maternal Sib of Lot 34**  
BROOKING BLACK ANGEL 6024



Int **33** Anchorage **BANK ROLL** 7228 // Angus

BOHR 228E // June 27, 2017 // 2076218

CONNEALY EARNAN 076E  
sire: **BROOKING BANK NOTE 4040**  
EA ROSE 918

LEES LATEST VERSION 0002  
dam: **BLAIR'S CHRISTINA 308A**  
BANDURA CHRISTINA 49X

weights	CAA epds	CAA epds
bw	rea	ce
84	n/a	3.0
ww	cw	bw
567	n/a	2.8
yw	marb	ww
908	n/a	57
	fat	yw
	n/a	98
		milk
		16
		tm
		44
		mce
		5.5

### calving ease: use on cows

- » Bank Note is one of the most complete breeding pieces in the industry and is known for his ability to produce high quality sons and daughters alike
- » Out of a complete female that was bred by Blairs and is backed by a maternal based pedigree
- » Bank Roll is sure to calve well and produce heavy steers and top end replacements to build around
- » He is long, smooth and sound with extra age to cover a few more cows with ease



Sire of Lot 33  
BROOKING BANK NOTE 4040



Grandam of Lot 33  
EA ROSE 918



Int **34** Anchorage **MOTIVATION** 7023 // Angus

BOHR 23E // Feb. 2, 2017 // 2076219

HF KODIAK 5R  
sire: **S00 LINE MOTIVE 9016**  
TLA BEAUTY 5R

SITZ TOP GAME 561X  
dam: **EXAR BLACKBIRD 4069**  
EXAR BLACKBIRD 1080

weights	CAA epds	CAA epds
bw	rea	ce
79	0.70	5.5
ww	cw	bw
670	40	1.3
yw	marb	ww
1220	0.27	53
	fat	yw
	.017	97
		milk
		23
		tm
		50
		mce
		2.5

### calving ease: use on heifers or cows

- » you'll make every hockey game and sleep well through the night as your cows calve with ease to this low birthweight, calving ease specialist
- » his sire, Motive is a sure-fire heifer bull that is one of the best in the business with daughters being noted for awesome udders and high production value
- » the dam was acquired from Oklahoma and is a top end female that we are very high on and never misses
- » maternal sister was a beautiful Trendspotter heifer that sold at Angus Collection
- » Motivation isn't the shiniest bull in the pen but he may be the most valuable and provide awesome ROI with his calving ease, soundness and awesome maternal genetics that back him



Sire of Lot 34  
S00 LINE MOTIVE 9016



Maternal Sister to Lot 34  
ANCHORAGE BLACKBIRD 8019





# \$ 5,250 OUTLAW CATTLE CO

**Int 35 Anchorage PRISONER 8196** // Homo Polled // 7/8 SimAngus

BOHR 196F // Mar. 3, 2018 // BPRS1270536

LFE VIPER 455U  
sire: **NCB COBRA 47Y**  
NCB MISS DREAM 22T

WS A STEP UP X27  
dam: **CRN STEP UP 34C \ HP-HOP CC-HOB**  
CRN STEELS LASS 9013W

weights	CSA epds	CSA epds
bw	25	ce
ww	rea	ce
648	0.79	0.7
yw	fat	ww
1065	-0.1	67.1
	marb	yw
	-0.14	97.2
		milk
		18.6
		mce
		6.3

## calving ease: use on heifers or cows

- » CALVING EASE & MATERNAL GREATNESS!!!
- » this bull will calve very well on heifers and you will want to keep every single female with this stacked pedigree
- » top 5% for CE, top 10% for BW and top 25% for MCE
- » Prisoner is built like a calving ease bull with a smooth shoulder, extended front end and attractive head
- » his dam, Mollydooker is one of the most beautiful cows in existence with an awesome udder and strong foot in a highly attractive, fault free package
- » Cobra is known for his marketable sons and unreal production daughters



**Dam of Lot 35**  
CRN MOLLYDOOKER 34C



**Sire of Lot 35**  
NCB COBRA 47Y



# \$ 3,000 CALVIEW FARMS INC

**Int 36 Anchorage FENWAY 8009** // Homo Polled // 3/4 SimAngus

BOHR 009F // Jan. 17, 2018 // pending

LFE VIPER 455U  
sire: **NCB COBRA 47Y**  
NCB MISS DREAM 22T

MR HOC BROKER  
dam: **ANCHORAGE DELIGHT 6045**  
REMITALL F ELINE 13X



weights	CSA epds	CSA epds
bw	76	ce
ww	rea	ce
672	0.79	0.7
yw	fat	ww
1065	-0.1	67.1
	marb	yw
		97.2
		milk
		18.6
		mce
		6.3

## calving ease: use on heifers or cows

- » Sienna's pride and joy is Fenway as she successfully showed him at side of his dam through 4-H this past summer
- » just a 76 pound birthweight in this calving ease bull that is sure to calve with ease and leave exceptional daughters
- » Fenway profiles very well and is extended through his front end, level topped and sound structure
- » photogenic from every angle and one that will continue to get better and better with age
- » his dam was a many time champion for Sienna through 4-H and Jackpot shows and full ET sister was the Reserve Grand Champion SimAngus at Summer Synergy in 2017
- » the EPDs will be available sale day on this calving ease bull



**Dam of Lot 36**  
Anchorage Delight 6045



**Full sib to Delight - Reserve Grand Champion at Summer Synergy**



**\$ 5,000**  
**KEN EVANS**

**Int 37 Anchorage JOY'S OUTLOOK 8035** // Scurred // SimAngus

BOHR 035F // Jan. 29, 2018 // pending

O C C LEGEND 616L  
sire: **B C LOOKOUT 7024**  
GIBBET HILL MIGNONNE E37

3C MACHO M450 BZ  
dam: **AJE/JF ANT JOYS ELEGANCE**  
BHS JF ANTOINETTES JOY

weights	CSA epds	CSA epds
bw	17.4	12.7
ET		
ww	0.54	0.1
636		
fat	-	56.3
1095		
marb	0.34	83.1
		24.1
		mce
		4.7

#### calving ease: use on heifers or cows

- » big time maternal genetics in this awesome pedigreed, calving ease herd sire
- » his donor dam, Joy is one of the very best in the industry and has produced many champion progeny but most importantly, she has generated hundreds of thousands of dollars in progeny sales
- » Lookout is a sire that is noted for leaving unreal daughters in the Angus industry and when mated to one of the best in the Simmental herdbook, you have a SimAngus bull with big time future
- » Joy's Outlook has a splash of white on his head and we feel that he has a lot to offer with awesome maternal genetics that will elevate any program



**Dam of Lot 37**  
**AJE/JF ANT JOYS ELEGANCE**



**\$40,000 Maternal Sib to Lot 37**  
**CD JOYS ELEGANCE 6107**



**\$ 4,500**  
**DUSTY & DAWN**  
**MCPHEE**

**Int 38 Anchorage LOADED FOR BEAR 8722** // Homo Pld // SimAngus

BOHR 722F // Mar. 1, 2018 // pending

REMINGTON LOCK N LOAD 54U  
sire: **W/C LOADED UP 1119Y**  
MISS WERNING KP 8543U

BROOKING PROSECUTOR 222  
dam: **COME AS U R LADY 508C**  
JL LADY 06 112

weights	CSA epds	CSA epds
bw		ce
ET		
ww	rea	bw
776		
fat		ww
1360		
marb		yw
		milk
		mce

#### calving ease: use on cows

- » an awesome individual that we truly think the world of as he puts it all together in every way
- » he was born in a cooperador herd in the US and was brought up after weaning and has never missed a beat as a true feature
- » his dam, 508C was a beautiful udder female that commanded \$40,000 and this will be the last of her offspring offered after we unfortunately lost her
- » the grandam, JL Lady 06 112 is one of the best in the industry and has raised many of the best high sellers in Brooking and Come As U R program
- » maternally stacked pedigree that combines the best of the simmental and angus genetics in a big time package
- » Loaded For Bear is one we are proud of and easy to find with his proud front end, long spine, square hip, deep body, sound structure and good feet that allows him to rise to the top
- » note, the EPD's will be available sale day on this big time herd bull



**Dam of Lot 38**  
**COME AS U R LADY 508C**



**Sire of Lot 38**  
**W/C LOADED UP 1119Y**





**lot 39 Anchorage COWBOY UP 8194** // Homo Polled // PB Simmental  
BOHR 194F // Mar. 3, 2018 // UNR1270548

TRIPLE C SINGLETARY S3H  
sire: **CCR COWBOY CUT 5048Z**  
CCR MS 4045 TIME 7322T

WLE BS BENCHMARK  
dam: **SFV/CLRWTR SHEZA STAR**  
SVF SHEZA STAR N902

weights	CSA epds	CSA epds
bw	ce	ce
99 ET	36.9	10.9
ww	rea	bw
670	0.97	2.3
yw	fat	ww
1065	-0.088	74.7
	marb	yw
	0.10	110.3
		milk
		26.3
		mce
		6.3



**lot 40 Anchorage COWBOY WAY 8191** // Homo Polled // PB Simm  
BOHR 191F // Feb. 28, 2018 // UNR1270546

TRIPLE C SINGLETARY S3H  
sire: **CCR COWBOY CUT 5048Z**  
CCR MS 4045 TIME 7322T

WLE BS BENCHMARK  
dam: **SFV/CLRWTR SHEZA STAR**  
SVF SHEZA STAR N902

weights	CSA epds	CSA epds
bw	ce	ce
90 ET	36.9	10.9
ww	rea	bw
681	0.97	2.3
yw	fat	ww
1100	-0.088	74.7
	marb	yw
	0.10	110.3
		milk
		26.3
		mce
		6.3

### calving ease: use on heifers or cows

- » lot 39 and 40 are full sib ET bulls that came up from recipis from South Dakota and are calving ease bred
- » proven and outcross purebred simmental pedigree that stems back to one of the best cow families in the USA, the Sheza Star lineage
- » the donor dam, Sheza Star is a maternally bred female with calving ease throughout and is a direct daughter of the great N902 that has produced numerous champions and high sellers south of the border
- » double digit calving ease and triple digit yearling weight EPD's provides a huge spread from birth to yearling while adding milk and maternal calving ease traits
- » these young bulls have lots of maternal strength and calving ease in a long made, good haired, smooth and interesting package



**Sire of Lots 39 & 40**  
CCR COWBOY CUT 5048Z



**Dam of Lots 39 & 40**  
SFV/CLRWTR SHEZA STAR



**Grandam of Lots 39 & 40**  
SVF SHEZA STAR N902



**Maternal Sib of Lots 39 & 40**  
SVF STAR POWER S802



**Lot 41 ANC GVR CASH MONEY 8114** // Homo Polled // PB Simmental

BOHR 114F // Mar. 18, 2018 // pending

JS SURE BET 4T  
sire: **W/C CASH IN 43B**  
MISS WERNING KP 8543U

NUG ROYAL RED 324A  
dam: **RUST SCREAM 6105D**  
RF SCREAM 215Z

weights	CSA epds	CSA epds
bw 76	ce - 8.8	
ww 630	rea - 1.95	
yw 1110	fat - 63.7	
	marb - 90.7	
	yw - 90.7	
	milk 19.1	
	mce 4.75	

#### calving ease: use on heifers or cows

- » big time calving-ease with a stacked pedigree of great females
- » combining the famous Flirt and 8543U on both sides of the pedigree makes Cash Money a very intriguing calving ease bull for the heifer pen
- » his dam, 6105D was a high-seller at the past Rust Mountain View Ranch Sale and is a maternal sister to the great Captain Scream
- » this would be the only Cash In calf in Canada and he is a calving ease sensation that is royally bred and is a very popular breeding piece
- » hair, style, shape, smoothness and presence makes Cash Money a very intriguing breeding piece



**Dam of Lot 41**  
RUST SCREAM 6105D



**Sire of Lot 41**  
W/C CASH IN 43B



**Lot 42 Anchorage COMPASS 7191** // Scurred // SimAngus

BOHR 191E // Mar. 17, 2017 // pending

SVS CAPTAIN MORGAN 11Z  
sire: **SVS COMPASS 511C**  
SVS BLK CHELSEA 115A

DAMERON FIRST IMPRESSION  
dam: **EXAR MISS WORTHY 3053**  
PF MISS WORTHY OF 364N 1088

weights	CSA epds	CSA epds
bw 80	ce 13	
ww 648	rea 0.79	bw 0.7
yw 955	fat -0.1	ww 67.1
	marb -0.14	yw 97.2
		milk 18.6
		mce 6.3

#### calving ease: use on heifers or cows

- » big time calving-ease with a stacked pedigree of great females
- » combining the famous Flirt and 8543U on both sides of the pedigree makes Cash Money a very intriguing calving ease bull for the heifer pen
- » his dam, 6105D was a high-seller at the past Rust Mountain View Ranch Sale and is a maternal sister to the great Captain Scream
- » this would be the only Cash In calf in Canada and he is a calving ease sensation that is royally bred and is a very popular breeding piece
- » hair, style, shape, smoothness and presence makes Cash Money a very intriguing breeding piece



**Maternal Sib to Lot 42**  
GRAND CHAMION STEER AT  
PRAIRIELAND AG SHOWCASE



**Maternal Sib to Lot 42**  
GRAND CHAMION STEER AT  
PRAIRIELAND AG SHOWCASE





**\$ 4,000**  
**HENRY PETERS**

**Int 43 Anchorage CAPTAIN JERRY 7223** // Scurred // SimAngus

BOHR 221E // Mar. 28, 2017 // pending

SVS CAPTAIN MORGAN 11Z  
sire: **SVS COMPASS 511C**  
SVS BLK CHELSEA 115A

CRESCENT CREEK EMBLAZON 109X  
dam: **NORDAL 60W QUEEN 57Z**  
NORDAL 72R QUEEN 60W

weights	CSA epds	CSA epds
bw	cw	ce
89	-	-
ww	rea	bw
652	-	-
yw	fat	ww
1040	-	-
	marb	yw
	-	-
	milk	-
	-	-
	mce	-

#### calving ease: use on cows

- » length, dimension and overall athleticism is commended on Captain Jerry
- » his sire, Compass is an impressive mature bull that does so much right in our program siring impressive sons and daughters
- » we were able to buy some of the best cows from Nordal Sale a few years back and they have produced very well much like his dam
- » this guy is smooth made and we feel that he will be a very complete bull that can offer impressive ROI for the new owner



**Sire of Lots 42 - 44**  
**SVS COMPAS 511C**



**Grandsire of Lots 42-44**  
**SVS CAPTAIN MORGAN 11Z**



**\$ 4,000**  
**JOURNEY'S END**

**Int 44 Anchorage CAPTAIN JACK 7223** // Scurred // SimAngus

BOHR 223E // Mar. 23, 2017 // pending

SVS CAPTAIN MORGAN 11Z  
sire: **SVS COMPASS 511C**  
SVS BLK CHELSEA 115A

LOCUST GROVE NET WORTH 17U  
dam: **NORDAL 152U QUEEN 152Z**  
EARLY SUNSET QUEEN 152U

weights	CSA epds	CSA epds
bw	cw	ce
92	-	-
ww	rea	bw
686	-	-
yw	fat	ww
1350	-	-
	marb	yw
	-	-
	milk	-
	-	-
	mce	-

#### calving ease: use on cows

- » heavy, powerful and extra muscle is packed into Captain Jack
- » Compass has done an awesome job siring highly productive cattle and these three extra age bulls are a prime example
- » with Net Worth on the bottom side, you can invest with confidence as you will want to keep every daughter
- » the dam, 152Z has a strong udder, good feet and is a sharp looking aged cow with lots of productivity



**Sire of Lot 44**  
**S A V NET WORTH 4200**



**OUT OF THE SALON AND READY FOR PHOTOS**

# PHOTO DAY ON THE FARM



BBBrrr...





# BOHRSON MARKETING SERVICES

RR4 SITE 7 BOX 28  
OLDS, AB T4H 1T8

From Hanley:

3.5 miles west on Rd 764  
6 miles south  
1/2 mile west

From Kenaston:

10 miles west on Hwy 15  
2 miles north  
1/2 mile west

From Outlook:

Travel east on Hwy 15 to  
jct of Hwy 19  
2 miles north  
3.5 miles east



RETURN POSTAGE GUARANTEED  
PORT DE RETOUR GARANTI