

BROOKING

—ANGUS RANCH—

SALE RESULTS

38 LIVE LOTS GROSSED \$496,925 TO AVERAGE \$12,349

Open Book Invitational
CLOSEOUT AT 7PM ON NOV. 18

ch 7

Welcome TO OUR PROGRAM

We spend a lot of time, thought and effort throughout the year for the results of one day. Not any different than you and most operations to reap hopeful rewards of selling their calves, crops or bull and female sales in just one day. I think its all of that hardwork and emotion that goes into what we do that makes us farmers and ranchers proud people of what we do. We couldn't be more proud of the offering that we have for you this year. We have stepped up our game especially digging as deep as we did to offer the bred females this year. Our consignors (many have grown into great friends over the years) have given us confidence to sell their absolute best. Every place we went to gave us the pick of what we wanted for this sale. NO matter what your taste is in cattle I feel we have options and most likely have what you are looking for.

Last year one of the highlights of the sale was selling a sight-unseen heifer for \$13,000 to Ter-Ron Farms who was the seventh high selling female. She went on to be Reserve Grand Champion Female at Agribition. It has been a very long time since that feat has been accomplished. It proves the depth of quality and the amount of options at affordable prices in this sale.

Last year was our first year for our donation heifer project and it was humbling and enjoyable for us to see the results. We sold out of tickets and raised \$10,000 to go towards junior associations and shows. Faith Collins was the lucky winner of the heifer "Angel". The pictures and messages from Faith showed that Angel found the perfect home and really was a major reason for us to continue the Donation heifer again. We look forward to see who the lucky winner is and where all the juniors choose to give the donated money to.

Once again we do reserve the right to show several of the open heifer's at Agribition at our expense.

If you have any questions or want to discuss the cattle on offer please feel free to contact me. Everyone is busy and many of the heifers sell sight-unseen and we want you to be more than happy with your purchase. We are here to help you.

We lastly would like to thank everyone who helps and supports our program throughout the year. We really cannot do it without you.

Justin & Tawnie, Kordell, Kiefer and Aleida

Box 813 Radville, SK S0C 2G0

brookingangus@outlook.com

www.brookingangusranch.com



SALE DAY INFORMATION

SALE DAY CONTACTS

Brooking Angus Ranch { Justin Morrison, 306-536-4590
Alastair Burnett, 306-458-7207
Bohrson Marketing Services Ltd. { Scott Bohrsen, 403-370-3010
Rob Voice, 306-361-6775
Taylor Richards, 306-821-4169
Cheramie Viator, 979-777-9419
ANGUS LIVE - Jeremy Haag, 816-516-1309
Roger Reynolds, 306-536-6112
Nate Marin, 306-869-7130

CONSIGNOR CONTACTS

ANCHORAGE FARMS - Olds, AB
The Bohrsen Family, 403-370-3010
BAR-E-L ANGUS - Stettler, AB
Dave & Lynne Longshore, 403-740-6788
BLAIRSWEST - Drake, SK
Maguire Blair (306) 360-7716
BRAYDEN SCHMIDT - Lumsden, SK
Brayden Schmidt, 306-540-3565
COME AS U R ANGUS - Storthoaks, SK
Kevin Granger (306) 485-8087
DUSTY ROSE CATTLE CO - Arcola, SK
Randy James (306) 575-7833
GREENWOOD ANGUS - Lloydminster, SK
Jayden or Jaxon Payne, 306-821-2260
RIVERFRONT ANGUS - Medicine Hat, AB
Ashton Robertson, 403-878-0101
SCHWAN ANGUS - Swift Current, SK
Jeff & Brenda Schwan, 306-741-2166
WIWA CREEK ANGUS - Rush Lake, SK
Jonathan Thomason, 306-774-4006

SALE LOCATION

At the ranch Radville, SK. From Radville go 8km west until Rg Rd 185. Then go North 4.4 km. We are on east side. From Ceylon go 14.6 km east until Rg Rd 185 then go North 4.4 km. We are on east side. We are an hour south of Regina International Airport.

SHOW RIGHTS

Brooking Angus Ranch reserves the rights to show any of the heifers at Canadian Western Agribition. Contact Justin on which ones we are thinking of showing.

CUSTOMER PARTNERSHIP PROGRAM

Progeny from females purchased through Brooking Angus sales are eligible to sell in future Brooking Angus Ranch production sales. Contact Justin for details.

JUNIORS

All calendar year heifers in the sale are halter broke. However, they are suitable for different age and experience. Contact Justin on which ones would be suitable especially for the first time showman.

DELIVERY

Brooking will assist in coordination of delivery and get heifers to central points within a 300km radius of Radville. All heifers can be delivered to Agribition. US purchases: Brooking will provide necessary health papers and deliver to a central point in North Dakota. All Juniors and their families that purchase are welcome to come to the ranch and we can assist you in a workshop that covers all aspects of the showing-feeding, daily hair care, showmanship, grooming and clipping.

CATALOGUE DESIGN

Created by Bohrsen Marketing Services Ltd.

VIDEOS

Available on AngusLive.com closer to sale time.

HOW TO BID

First step is to **REGISTER** as a bidder at www.Anguslive.com or call 816-516-1309.



If you do not want to bid on the Internet you can bid by telephone with Justin Morrison 306-536-4590 or in person at Brooking Angus Ranch.

***HORSE RACE STYLE CLOSING FORMAT FOR THIS SALE! WHEN TIME EXPIRES, ALL LOTS ARE DECLARED SOLD! ORIGINAL ENDING TIME: 7PM CST WITH EXTENDED BIDDING TO FOLLOW! EXTENDED BIDDING WILL CONTINUE UNTIL THERE IS NO BIDDING FOR 5 MINUTES!**

With this option, all lots will close simultaneously. A few benefits to this style of auction are the buyer has the CHOICE to switch to any lot(s) in the offering if he is outbid on his/her current choice; buyer does not have to deal with the sale order of the sale because all lots are offered and bid on simultaneously; and the buyer has a choice(s) and more time to make his/her decision. Extended Bidding means that the auction is not declared closed until there have been ten minutes of inactivity on the current sale. If there is any bidding during the inactivity period, the auction is extended until there is no bidding for ten minutes during the inactivity period. You can always check the time remaining that appears next to each lot item. REMEMBER TO CLICK ON THE REFRESH BUTTON TO UPDATE THE TIME REMAINING! For this sale the extended bidding period is 5 minutes.

Example 1: Auction Closes at 7pm. There is no bidding from 6:55 pm to 7pm. All lots are declared closed and the sale ends at 7pm.

Example 2: Auction closes at 7pm. There is a bid placed at 6:58pm. The Auction is extended 5 additional minutes. No more bidding occurs. All lots are declared closed and the sale ends at 7:03pm.

Example 3: Auction Closes at 7pm. There is a bid placed at 6:58pm. Auction is extended by 5 minutes until 7:03 pm. Another bid is placed at 7:02 pm. No more bids are placed. All lots are declared closed and the sale ends at 7:07 pm *In the event of an extended auction there will be no bids accepted after 11:59 ET.

Proxy Bidding is a feature you may use during the duration of the auction. This feature allows you to place a private maximum bid that only you will be aware of and allow the computer to bid on your behalf when another bidder places a bid on the same animal(s) as you.

Sale runs Sunday Nov. 17 - Monday Nov. 18 at 7PM CST



a program that produces banners
every.
single.
year.





all their dams sold in past sales

CONGRATULATIONS TO ALL THE WINNERS!!

\$10,000 WAS RAISED!

DONATION HEIFER WINNER – ROCCO PERROT :: ALAMEDA, SK

THE CANADIAN JR ANGUS ASSOCIATION WILL RECEIVE \$2,000

THE 8 KIDS THAT WON \$1,000 TO DONATE ARE:

KEEGAN CHIBRI

KIRK RUTTEN

FIONA CAMPBELL

RILEY LEESON

KOHN KAUFMANN

WHITNEY LABIUK

WYATT BECKER

MADISON ETHIER



Firebrand :: Sire

Donation Heifer

Brooking Lass 9038

2088883 :: JSTN 38G :: January 10 2019 :: bw-78

^{Sire} BROOKING BANK NOTE 4040
BROOKING FIREBRAND 6068
BROOKING ANNIE K 390

^{Dam} HOFFMAN OPPORTUNIST 4640
BROOKING LASS 7143
SOO LINE LASS 2074

bw	ww	yw	milk	tm	sc	ce	mce
3.5	61	100	30	61	-	2.5	8.5

We, Brooking Angus Ranch, have decided to do something a little different to support our youth, 4-H and junior show programs. We are going to give away this top end heifer to a junior between the age's of 8-18. She will be managed among our show/sale heifers and will be halter broke and show ready at draw date. To win the heifer, an entry needs to be purchased in the name of a junior that is an active member of 4-H or a junior association and is a Canadian citizen. We will draw a name and that lucky junior owns the heifer. 8 more names will also be drawn and they will each be able to designate 10% of the money raised by entries to a favourite junior show, 4-H club or a junior breed Association (doesn't have to be Angus). The remaining 20% will automatically be designated to go to the Canadian Junior Angus Association. **A maximum of 200 entries for \$50 each will be on offer and all the money raised will be donated to the designated programs.** You may purchase more than one entry per junior but can only win once. Entries must be purchased by November 16th and draw date will be on Facebook Live the morning of our female sale day November 18, 2019 to announce the winners. To purchase an entry you can either email us at brookingangus@outlook.com, text/call at 306-861-4155 or PM on Facebook.

Thank you for all the support
\$10,000 was given to juniors
by funds raised from last year's donation heifer
which supported the following organizations:



CANADA
RADVILLE BEEF 4H CLUB



ALBERTA JUNIOR ANGUS ASSOCIATION
EAST CENTRAL REGIONAL HEIFER SHOW

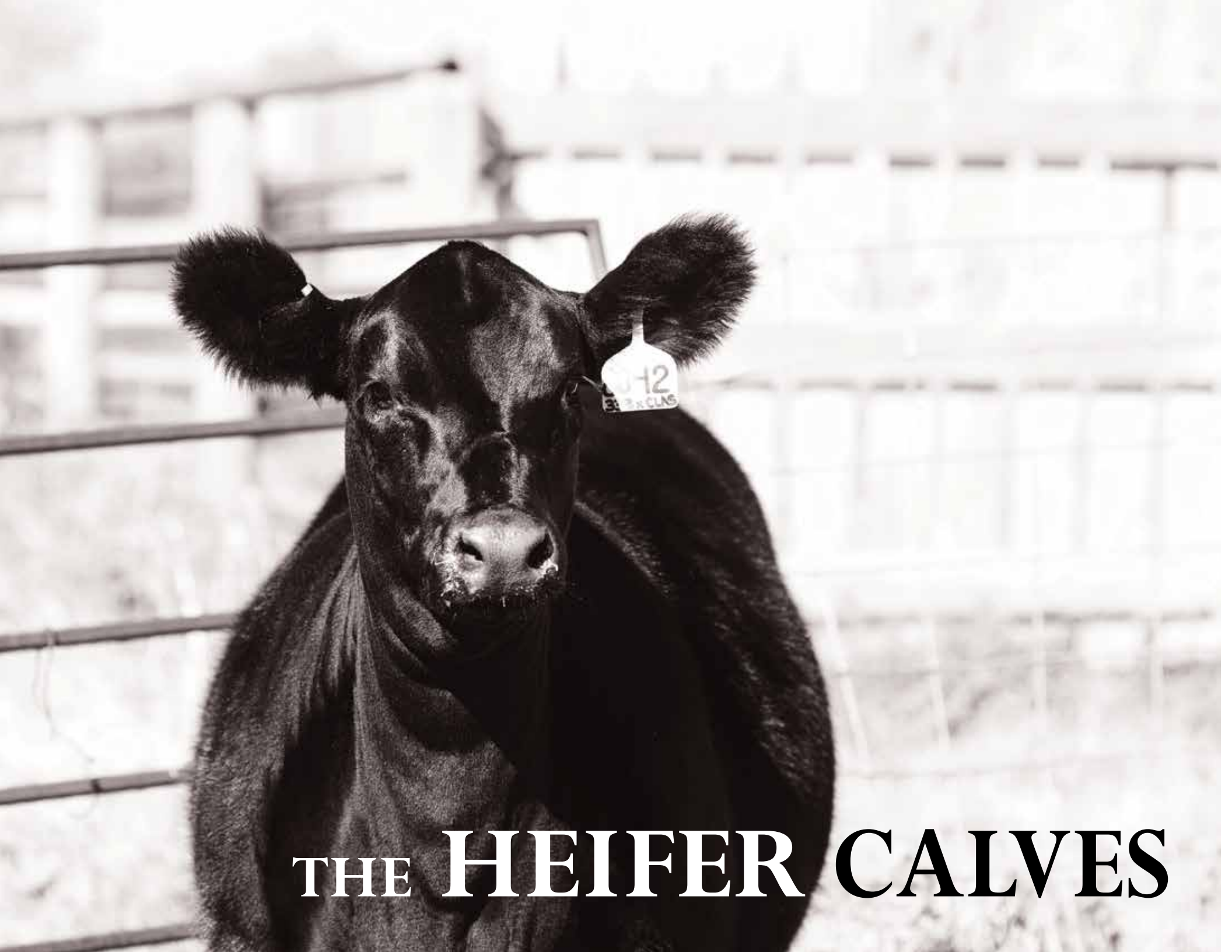


CANADA
WEYBURN INTERCLUB
REGIONAL 4H SHOW



Showdown 2019



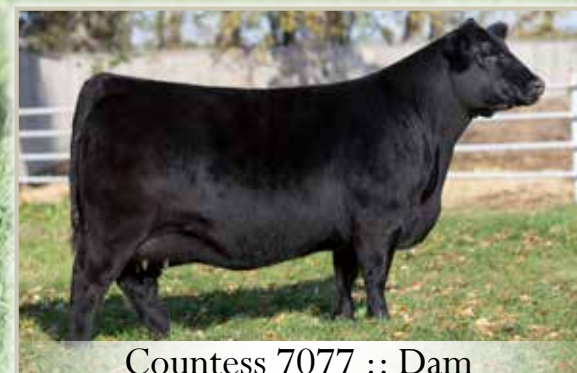


THE HEIFER CALVES

\$53,500
KT RANCHES



2017 CWA Sr. Calf Champ :: Dam



Countess 7077 :: Dam

Brooking Dusty Countess 9026
 2095863 :: JSTN 26G :: January 05 2019 :: bw-88

Sire BROOKING BANK NOTE 4040
BROOKING FIREBRAND 6068
Dam BROOKING ANNIE K 390

BAR-E-L NATURAL LAW 52Y
BROOKING COUNTESS 7077
BROOKING COUNTESS 239

bw	ww	yw	milk	tm	sc	ce	mce
4.8	58	100	24	53	-	2.5	9.0

This lot 1 female is the epitome of what we are trying to accomplish with our program and this sale on many levels. First we are offering elite females year after year. Brooking Dustys Countess 9026 is flat out incredibly impressive no matter how you look at her. This heifer is in the big league category. Secondly her dam was a past lot 1 heifer that to this date was the most popular heifer calf by breeders across all breeds that we have ever shown at Agribition. Thirdly we are helping to generate return on customers purchases. Fourth point this heifer is our breeding and we are proud that our genetics are working. The first daughter of the \$95,000 Brooking Firebrand 6068 to sell. Brooking Dustys Countess 9026 and her dam will be shown at Farmfair and Agribition and are already qualified for the RBC Supreme at Agribition. Here is a grand opportunity to acquire one of the top heifers to sell in the land. A lot of people have fallen in love with the dam and the calf is considered better by many. Join team Countess this fall and be part of the next chapter.

\$26,500

DUSTY ROSE CATTLE CO



Brooking Beauty 333 :: Dam



Brooking Beauty 8042 :: Mat. Sib

2 Bar-E-L Beauty 156G
2116046 :: YHB 156G :: March 15 2019 :: bw-85

Sire **BROOKING BANK NOTE 4040**
BROOKING FIREBRAND 6068
BROOKING ANNIE K 390

Dam **SAV HARVESTOR 0338**
BROOKING BEAUTY 333
TLA BEAUTY 6R

bw	ww	yw	milk	tm	sc	ce	mce
3.6	57	97	28	56	1.11	3.0	9.0

After my tour this summer and searching through over 1000 customers heifer calves, this was my favourite. This young March born Beauty is as pretty as they come. She has a sweeping rib cage and supported by a great cow family. Maternal sisters last year sold for \$47,500, \$36,000 and \$13,500 and claiming two banners at Agribition. We have several full brothers that are among the heaviest bulls we have weaned, they are good! The grandam, TLA Beauty 6R has been a maternal matriarch with 87 progeny to date and influenced many high sellers. Bar-E-L Beauty 156G is special in her type and kind and has the cow family strength to reinforce her big time future.

\$13,000

**CLEMENT COTE
FARMS**



Brooking Beauty 333 :: Dam



Brooking Beauty 8187 :: Mat. Sib

3 Brooking Beauty 9053

2098824 :: JSTN 53G :: January 16 2019 :: bw-85

Sire BROOKING BANK NOTE 4040
BROOKING FIREBRAND 6068
BROOKING ANNIE K 390

Dam SAV HARVESTOR 0338
BROOKING BEAUTY 333
TLA BEAUTY 6R

bw	ww	yw	milk	tm	sc	ce	mce
3.6	57	97	28	56	1.11	3.0	9.0

Brooking Beauty 9053 is attractive, maternal looking, long bodied and has a pretty head. The dam Brooking Beauty 333 is a potent producer who is one of our absolute favourites. We have put more eggs in out of Beauty 333 the last two years than any other donor. Brooking Beauty 9053 is a full sister to lot 2 and is a maternal sister to the popular heifers lot 1, 2 and 3 that headlined our female sale and show string last fall. Out of the initial calf-crop sired by Brooking Firebrand 6068 that are meeting his high expectations.

\$17,500

KIRSTEN FORMWALD



Beauty 333 :: Dam



Brooking Beauty 8042 :: Full Sib

4 Brooking Beauty 9126

2098801 :: JSTN 126G :: February 11 2019 :: bw-93

Sire DAMERON FIRST CLASS
EXAR CLASSEN 1422B
EXAR PRINCESS 2006

Dam SAV HARVESTOR 0338
BROOKING BEAUTY 333
TLA BEAUTY 6R

bw	ww	yw	milk	tm	sc	ce	mce
4.7	64	104	24	55	0.61	2.0	9.0

I really like this heifers head, rib, bone, huge rib shape and great hair. A full sister to last years lot 1 and second high seller. Also a maternal sister to the high selling female at \$47,500 to Rust Mountain View Ranch. Another full sister was Reserve Intermediate heifer calf champion at Agribition last year and sold to Dusty Rose Cattle Co and Double Bar D. This cow family cranks them out no matter what direction you breed them to and is the reason why they have been sought after by so many top cattleman. Brooking Beauty 9126 would be a great show heifer and future money earner for years to come for her new owner.

5 Brooking Beauty 9100

2088983 :: JSTN 100G :: January 28 2019 :: bw-84

Sire SAV RENOWN 3439
SAV RENOVATION 6822
SAV MADAME PRIDE 0151

Dam BROOKING BLACK INK 4019
BROOKING BEAUTY 6095
SOO LINE BEAUTY 9041

bw	ww	yw	milk	tm	sc	ce	mce
2.4	65	115	21	54	-	7.0	6.5

Sale feature! We wouldn't argue if you thought this was the top cow prospect and future donor in the offering. Brooking Beauty 9100 is massive in her rib shape, has a maternal look, easy fleshing and has absolute perfect teat size and placement. The Renovation daughters are like fine wine they get even better with age and this one will be a classic.



\$30,500

ZWT RANCH

6 Come As U R Lady 912G

2117601 :: CAUR 912G :: January 18 2019 :: bw-88

Sire SAV RENOWN 3439
SAV RENOVATION 6822
SAV MADAME PRIDE 0151

Dam SAV 004 DENSITY 4336
JL LADY 06 112
LADY OF PEAK DOT 817P

bw	ww	yw	milk	tm	sc	ce	mce
3.3	60	107	21	50	0.33	4.0	4.0

We are in love with our Renovation daughters and believe he will be a breed headliner for raising the ultimate females. Now imagine adding the proven female producing icon Density again to the bottom side of the equation and you have a masterpiece. Especially a Density daughter that has sold progeny for \$40,000, \$36,000, and many in the \$10-\$20k range who all would be maternal siblings to Come As U R Lady 912G. The forecast is promising on this maternal masterpiece.

\$10,000

TM FARMS



CAUR 508C :: Mat. Sib



CAUR 717E :: Mat. Sib

\$15,000

BAR-E-L ANGUS

7 Brooking Beauty 9097

2088980 :: JSTN 97G :: January 27 2019 :: bw-79

Sire CTS REMEDY 1T01
ELLINGSON REMEDY 6452
EA BLANCHE 7921

Dam BROOKING BANK NOTE 4040
BROOKING BEAUTY 7100
TLA BEAUTY 6R

bw	ww	yw	milk	tm	sc	ce	mce
3.1	55	102	25	53	-	-	-

You will notice many of the top females we have always have the same name. The Beauty cow family is synonymous with production and maternal value. Brooking Beauty 9097 is no exception and is produced from a two year old Bank note daughter that is perfect uddered, heavy milking, easy fleshing and is among our best young females. The sire, Ellingson Remedy 6452 was our selection and was a top seller at Ellingson Angus. His initial calf crop are exactly what we hoped for. They are easy calving, have big rib shape, awesome feet and are well made.



TLA Beauty 6R :: Grandam

\$9,250

**DUSTY ROSE
CATTLE CO**

8 Blairswest Erica 16G

2117061 :: MJNB 16G :: February 6 2019 :: bw-102

Sire CONNEALY EARNAN 076E
BROOKING BANK NOTE 4040
E A ROSE 918

Dam MICH PIT BOSS 121Y
BLAIRSWEST MISS ERICA 400C
BAR-E-L ERICA 74A

bw	ww	yw	milk	tm	sc	ce	mce
3.3	57	98	18	47	-	-	-

One of the top success stories made through this sale was when Blairs acquired Bar-E-L Erica 74A for \$9500. She went on to be undefeated champion at all the majors as a two year old and the heifer calf at side in all those banner winning pictures in turn is the dam to this special sale lot, Blairswest Erica 16G. On her own merit Blairswest Erica 16G owns the phenotype, shape, athletic ability and style to write her own chapter of the Erica story. One of the most attractive Bank Note daughters we have sold.



Erica 74A :: Grandam

9 Anchorage Blackbird 9012

2119959 :: BOHR 112G :: Feb. 2/19 :: bw-90

Sire BROOKING BANK NOTE 4040
BROOKING FIREBRAND 6068
BROOKING ANNIE K 390

Dam EXAR CLASSEN 1422B
EXAR ENVIOUS BLACKBIRD 3881
EXAR ENVIOUS BLACKBIRD 84235

bw	ww	yw	milk	tm	sc	ce	mce
4.3	58	92	26	55	0.37	2.0	9.5

If you want to chase banners and fill the trophy case here is your heifer. Anchorage Envious Blackbird 112G is loaded with style, has amazing hair, carries her clean head and neck high on the move and has a huge sweeping rib. The dam is a past \$60,000 top selling heifer at Express Ranches that is a 3/4 sister to two Denver Champion's and ROV show heifer of the year. This Firebrand daughter is a beautiful sight and is worth the drive to Brooking to see.

\$9,000

BOSS LAKE GENETICS



Blackbird 3881 :: Dam

10 Schwan Miss Blackcap 903G

2118688 :: SCWN 903G :: Jan 9/19 :: bw-85

Sire DAMERON FIRST CLASS
COLBURN PRIMO 5153
SILVEIRAS SARAS DREAM 1339

Dam BROOKING PROSECUTOR 222
BROOKING BLACKCAP 5018
SCHAFF BLACKCAP 955

bw	ww	yw	milk	tm	sc	ce	mce
2.6	53	88	15	41	-	3.8	5.8

Talk about ultimate show heifer that has all the pieces to capture the judge's eye. Schwan Blackcap 903G is very similar in design to her dam who was a past sale highlight. They share the same rib, dimension, bone and sound structure. We are flushing a maternal sister to the dam and the grandam. This Primo daughter has power, style and is correct on all four legs and will be a contender in any arena. Show heifer deluxe!!

\$10,000

PIESCHEL FARMS & DOUG BENNIWEIS



Blackcap 5018 :: Dam



Blackcap 955 :: Grandam

\$14,500

MJT CATTLE CO



11 Greenwood *Envious Blackbird* 60G
Reg :: JJP 60G :: Jan 3/19 :: bw-81

Sire SAV BISMARCK 5682
BAR-E-L NATURAL LAW 52Y
BAR-E-L MAGNOLIA 143K

Dam EXAR CLASSEN 1422B
MICH ENVIOUS BLACKBIRD 1424
RR ENVIOUS BLACKBIRD 4487

bw	ww	yw	milk	tm	sc	ce	mce
-	-	-	-	-	-	-	-

The Payne family runs one of the best operations in the country and we were pumped to get this powerhouse heifer added to the sale. There is no question the Natural Law daughters are the most sought after in the country and with good reason. They have substance, power, stoutness and develop beautiful udders. There is very little semen around on Natural Law so take the opportunity to own one of the top ones to sell. We are showing a Natural Law daughter that is the mother of lot 1 in this sale. Also note two Agribition champion females have been sired by Natural Law. One of them sold in this sale as a calf.

\$7,250

COUNTRY LANE ANGUS



12 WKJ *Dusty Black Angel* 8G
2115363 :: WKJ 8G :: January 20 2019 :: bw-80

Sire SAV BISMARCK 5682
BAR-E-L NATURAL LAW 52Y
BAR-E-L MAGNOLIA 143K

Dam SAV NET WORTH 4200
WERNER BLACK ANGEL 1299
CLEARWATER BLACK ANGEL 395

bw	ww	yw	milk	tm	sc	ce	mce
1.3	45	86	26	48	1.08	9.5	12.0

WKJ Dusty's Black Angel 8G is a mirror image of her dam at the same age. She is eye-appealing with an attentive look, huge fuzzy ears, nice bone, great hair and wide topped. The dam Werner Black Angel 1299 has 70 progeny raised to date and is prolific in her production and mated to Natural Law doubles up the predictability. Buy these Natural Law daughters when you still can as there won't be many available ever. The last Natural law semen to sell averaged over \$500 a straw.



Black Angel 1299 :: Dam

14 Come As U R Lady 924G

2117629 :: CAUR 924G :: January 25 2019 :: bw-86

Sire CONNEALY EARNAN 076E
BROOKING BANK NOTE 4040
E A ROSE 918

Dam BROOKING PROSECUTOR 222
COME AS U R LADY 510C
JL LADY 06 112

bw	ww	yw	milk	tm	sc	ce	mce
2.5	64	111	19	51	-	3.0	5.5

Brooking Bank Note 4040 has been the number 1 sire for registrations in Canada two years in a row among Canadian born sires. The reasons are clear when you see daughters that look like Come As U R 924G. She has that bold body with width and shape throughout while maintaining a maternal look with a pretty head. The dam is a full sister to a past high selling female in this sale at \$40,000 to Canadian Donors and Rust Mountain View Ranch. The grandam is a prolific producer and responsible for many top sellers.

\$5,750

PERROT CATTLE CO



CAUR 508C :: Full Sib to Dam

15 Come As U R Lady 951G

2116053 :: CAUR 951G :: March 13 2019 :: bw-75

Sire BROOKING BLACK INK 4019
BROOKING CLASSIFIED 6071
BROOKING ERICA 4024

Dam BROOKING PROSECUTOR 222
COME AS U R LADY 510C
JL LADY 06 112

bw	ww	yw	milk	tm	sc	ce	mce
3.2	64	115	23	55	-	1.5	4.0

I really like this March heifer and she will be hard to compete with in her division at Agribition this fall. It is hard to deny the amount of rib, bone, size and mass she owns with an uncanny ability to combine that with a clean neck and attractive look. A maternal sister sells as lot 14 and proof is in the production on this young donor for the Granger family.

\$23,000

TM FARMS



Classified 6071 :: Sire

\$7,250

**ANCHORAGE FARMS
& SIENNA BOHRSON**

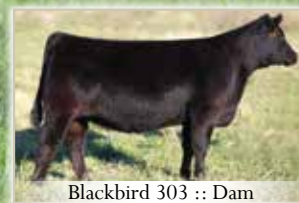
16 Riverfront Blackbird 911G
2106897 :: RFA 911G :: January 14 2019 :: bw-74

Sire CONNEALY EARNAN 076E
BROOKING BANK NOTE 4040
E A ROSE 918

Dam S A V BEST INTEREST 0136
BROOKING BLACKBIRD 303
SOO LINE BLACKBIRD 1118

bw	ww	yw	milk	tm	sc	ce	mce
1.0	68	115	22	56	-	3.5	9.0

In last years sale Riverfront Angus Ranch's consignment heifer sold for \$13,000 to Ter-ron Farms and went on to be Reserve Grand Champion Female at Agribition. A feat that has rarely been done. She has continued winning all season long. Riverfront Blackbird 911G is the kind that will continue to get better everyday. She is a very pretty female with maternal goodness written all over her and her impressive EPD profile makes this an all-around breeding package.



Blackbird 303 :: Dam

\$6,000

MATLOCK FARMS

17 Greenwood Beauty JJP 32G
2102251 :: JJP 32G :: January 06 2019 :: bw-71

Sire CTS REMEDY 1T01
ELLINGSON HOMEGROWN 6035
EA BLANCHE 4137

Dam WERNER EA MOTIVATION 2031 DWF
BROOKING BEAUTY 7158
TLA BEAUTY 6R

bw	ww	yw	milk	tm	sc	ce	mce
0.9	52	96	28	54	-	-	-

If you are needing a show heifer for a first time showman or young child here she is. She would look great with a pink halter on her. This gentle heifer is long bodied, soft haired, and has plenty of rib. Built for the long haul. She is supported by the great Beauty cow family and will be a profit centre for years to come.



Beauty 6R :: Grandam

18 Brooking Envious Blackbird 9089

2088971 :: JSTN 89G :: January 25 2019 :: bw-88

Sire GAMBLES HOT ROD
SILVEIRAS STYLE 9303
SILVEIRAS ELBA 2520

Dam DAMERON FIRST CLASS
MICH ENVOIOUS BLACKBIRD 1449
RR ENVOIOUS BLACKBIRD 4487

bw	ww	yw	milk	tm	sc	ce	mce
4.1	45	77	16	39	-	-	-

The winning combination of Style on First Class. Brooking Envious Blackbird 9089 has size, a big rib cage and the hair quality that kids with clippers dream about. Brooking Envious Blackbird 9089 is quiet natured and would be fun to show all season long. Note the look to all the Envious Blackbirds in this sale.

\$7,250

SWAN HILLS RANCH



19 Brooking Royal Lass 9070

2088918 :: JSTN 70C :: January 19 2019 :: bw-72

Sire SAV RENOWN 3439
SAV RENOVATION 6822
SAV MADAME PRIDE 0151

Dam STITLEST 1145
BROOKING ROYAL LASS 6001
BROOKING ROYAL LASS 4055

bw	ww	yw	milk	tm	sc	ce	mce
-0.1	57	101	23	52	-	9.0	6.5

Brooking Royal Lass 9070 is a well-made female that is smooth end-to-end and has that long and level underline. Definitely the cow making kind. The Renovation daughters mature fabulously and this heifer will be the same kind. The kind you want a hundred just like her. Her dam by STitlest is nice uddered and productive.

\$6,500

WILBAR CATTLE CO



Royal Lass 6001 :: Dam

\$5,000

WESTWAY FARMS



Queen 5006 :: Dam

20 Circle S North Queen 9169
2105010 :: BSCH 169G :: March 16 2019 :: bw-74

Sire BROOKING BANK NOTE 4040
BROOKING FIREBRAND 6068
BROOKING ANNIE K 390

Dam KOU PAL ADVANCE 28
BROOKING QUEEN 5006
BROOKING QUEEN 304

bw	ww	yw	milk	tm	sc	ce	mce
0.3	52	87	29	55	-	7.0	11.0

One of the first daughters to ever sell out of the \$95,000 Brooking Firebrand 6068. Firebrand is easy fleshing, correct in his phenotype, proud in his movement and owns perfect feet. Firebrand was used by many of the top cattlemen on the continent this past spring. Get in on the ground floor and take advantage of this opportunity. Dam has an impressive udder and is massive in her shape in a modest frame.



Rose Bowl

Progeny that trace to **EA Rose 918** will qualify to sell at this prestigious event.

Olds, Alberta
Friday, August 28, 2020

A black and white photograph of two black heifers standing in a field of tall grass. The heifers are positioned on either side of a central vertical line, facing the camera. They are behind a wire fence that runs horizontally across the middle of the frame. The background shows a flat landscape under a clear sky.

THE **BRED** HEIFERS

\$25,500

ZWT RANCH



Black Ink 4019 :: Mat. Sib



Missy Gal 90568 :: Dam

22 Brooking *Missy Gal* 8072

2027040 :: JSTN 72F :: January 22 2018 :: bw-76

Sire SAV RENOWN 3439
SAV RENOVATION 6822
SAV MADAME PRIDE 0151

Dam TC BOOMTIME 434
FLAG MISSY GAL 90568
SCR RD 3499-60854

bw	ww	yw	milk	tm	sc	ce	mce
1.2	55	94	22	50	0.75	4.5	7.5

AI on April 4/19 to SAV Rainfall (safe) Exposed to Ellingson Remedy 6452 from Apr. 20 - Jul. 20 SALE HIGHLIGHT! Brooking Missy Gal 8072 is one of the very best females to ever be offered for sale by Brooking. She is a sight to behold and is exactly what we are aiming for at Brooking. Ideal in her phenotype, long and level hip, wide pinned, strong topped, long and sweeping in her underline, attractive and maternal looking with perfect teat size and placement. The dam, Flag Missy Gal 90568 has Elite status with the CAA and has sold many top selling progeny for multiple programs. At ten years of age she is still in production, has a great udder, sound feet and still gets noticed by visitors. Brooking Missy Gal 8072 is the kind to build a program around. **Retaining 50% embryo interest.**

\$36,000

ALANA WILLIAMS



Soo Line Rose 1019 :: Grandam



Brooking Rose 325 :: Dam

23 Brooking Rosa 8180
2035813 :: JSTN 180F :: March 11 2018 :: bw-76

Sire SAV REGISTRY 2831
SAV SENSATION 5615
SAV BLACKCAP MAY 4136

Dam SAV BEST INTEREST 0136
BROOKING ROSE 325
SOO LINE ROSE 1019

bw	ww	yw	milk	tm	sc	ce	mce
1.8	58	103	25	54	-	3.0	3.5

AI on April 4/19 to PF OKLAHOMA (safe) Exposed to Ellingson Remedy 6452 from Apr. 20 - Jul. 20 Brooking Rose 8180 is a beautiful female and rare in her high quality phenotype. We originally planned to save this heifer as a feature for The Rose Bowl sale next summer. However, we wanted to offer some elite bred in this sale whose offspring would be eligible to sell in the much anticipated Rose Bowl. In her own design Brooking Rose 8180 is moderate framed with eye-appeal, style, balance with worlds of dimension. The foundation is laid with one of the top cow families in the business responsible for bringing us Bank Note and countless other high sellers. One female can make the difference in a program and here is a Rose opportunity.

\$15,000
CSI ANGUS



24 Brooking Annie 8045
2027028 :: JSTN 45F :: January 16 2018 :: bw-76

Sire SAV RENOWN 3439
SAV RENOVATION 6822
SAV MADAME PRIDE 0151
Dam SOO LINE MOTIVE 9016
BROOKING ANNIE 5048
BROOKING ANNIE 262

bw	ww	yw	milk	tm	sc	ce	mce
0.7	53	93	22	49	-	8.0	6.0

AI Bred on April 4/19 to SAV Rainfall (safe)

Exposed to Ellingson Remedy 6452 from Apr. 20 - Jul. 20

We absolutely love our Renovation daughters and Brooking Annie 8045 is a perfect example of why. They are easy fleshing, pretty headed, massive rib and deep flanked with ideal teat size and placement. Brooking Annie 8045 is completely stacked with the breeds most maternally charged genetics-Renovation, Renown, Density, Motive, Right Time and Sitz Alliance. Talk about breed icons tuning in the predictability of this great young female. Now imagine her early mating to Rainfall...could be the ticket.



Renovation 6822 :: Sire

\$11,000
WIWA CREEK
ANGUS



25 Brooking Annie K 8200
2103333 :: JSTN 200F :: April 20 2018 :: bw-72

Sire CFCC BLACK JACK 001
KR CASINO 6243 OSF
MALSONS SAVANNAH 27Y
Dam SAV BEST INTEREST 0136
BROOKING ANNIE K 390
SOO LINE ANNIE K 9165

bw	ww	yw	milk	tm	sc	ce	mce
1.8	51	92	37	63	0.71	1.0	5.5

Exposed to Ellingson Remedy 6452 from Apr. 20 - Jul. 2
Ultrasound estimated due Feb. 28/2020

What a great opportunity to purchase not only one of the first KR Casino daughters in Canada to sell but a daughter of the great Brooking Annie K 390. Brooking Annie K 8200 is a late April born that has plenty of punch, unique look, bone and hair. Her maternal brother the \$95,000 Brooking Firebrand 6068 has been used by top breeders across the continent and his initial calf crop is exciting. The dam is extremely good looking, has a perfect udder, is powerful yet pretty and is one of the top donor cows in our program. The grandam and third dam have both won Agribition and are as recognizable as any cow family in Canada.



Firebrand 6068 :: Mat. Sib



Annie K 390 :: Dam

26 Brooking Chloe 8085

2027050 :: JSTN 85F :: January 27 2018 :: bw-81

Sire CONNEALY EARNAN 076E
BROOKING BANK NOTE 4040
E A ROSE 918

Dam CROWFOOT EQUATION 5793R
XO CROWFOOT CHLOE 8845U
CROWFOOT CHLOE 5785R

bw	ww	yw	milk	tm	sc	ce	mce
0.8	44	74	18	40	0.53	8.0	9.0

AI Bred on April 4/19 to Brooking Prime Commodity (safe)
Exposed to Brooking Back Bar 8049 from Apr. 20 - Jul. 20
A tremendous cow prospect sired by the \$125,000 Brooking Bank Note 4040. Bank Note progeny are in high demand because of his ability to transmit mass, shape, look, fleshing ability and great hoof structure. Brooking Chloe 8085 is a typical of those qualities and has two full sisters in production that are proof of the production. Note early service to the \$40,000 Brooking Prime Commodity, second-top selling bull in our 2018 sale to Schwan Angus. Remember these Bank Note daughters progeny will be Rosebowl qualified.

\$6,250

NU HORIZON ANGUS



27 Brooking Erica 8166

2027097 :: JSTN 166F :: March 02 2018 :: bw-81

Sire CONNEALY EARNAN 076E
BROOKING BANK NOTE 4040
E A ROSE 918

Dam CONNEALY FEATURE ATTRACTION
BRUSETT ERICA P602
BRUSETT ERICA N425

bw	ww	yw	milk	tm	sc	ce	mce
1.3	53	93	18	45	0.59	7.0	10.0

Exposed to Brooking Back Bar 8049 from Apr. 20 - Jul. 20
Ultrasound estimated due Feb. 28/2020

A powerhouse of a Bank Note daughter right here. Brooking Erica 8166 is massive in her rib shape and muscle design with a herd bull producing look. This is the keeping kind right here. With our commitment to selling quality females every year this female is available. The service sire is out of TLA Beauty 6R that has been a production factory and high income cow for us. With high selling progeny and grand-progeny in every sale of ours.

\$6,000

RENEGADE RIDGE LIVESTOCK



Bank Note 4040 :: Sire

\$5,500

SCHOCHANETQUA

ANGUS



Annie 137S :: Dam

28 Brooking Annie 8112

2027108 :: JSTN 112F :: February 08 2018 :: bw-78

Sire SAV RENOWN 3439
SAV RENOVATION 6822
SAV MADAME PRIDE 0151

Dam F-R 662 LAD 4079
WILLABAR ANNIE 137S
WILLABAR ANNIE 191K

bw	ww	yw	milk	tm	sc	ce	mce
1.8	57	96	25	54	-	3.0	6.0

Exposed to Brooking Back Bar 8049 from Apr. 20 - Jul. 20
Ultrasound estimated due Feb. 26/2020

Brooking Annie 8112 is among the first Renovation daughters to sell and is one of the most angular and feminine fronted of the bunch. The dam was the high selling female of the Willabar Angus dispersal and has been a headliner female here at Brooking. A maternal sister was the lot 1 female in our first female sale selling for \$30,000 to Schwan Angus.

\$5,500

HIGHLAND STOCK

FARMS



Brooking Queen 5067 :: Mat. Sib

29 Brooking Queen 8147

2027090 :: JSTN 147F :: February 15 2018 :: bw-80

Sire SAV RENOWN 3439
SAV RENOVATION 6822
SAV MADAME PRIDE 0151

Dam K AVR D 2747
SCR QUEEN 50852
SCR QUEEN 612

bw	ww	yw	milk	tm	sc	ce	mce
2.0	47	85	27	51	0.75	5.0	8.0

AI Bred on April 4/19 to Brooking Prime Commodity (safe)
Exposed to Brooking Back Bar 8049 from Apr. 20 - Jul. 20
Brooking Queen 8147 is a sound made daughter of Renovation that has early service to the \$40,000 Brooking Prime Commodity. The dam is a productive and fertile female that raised 11 natural calves all consecutive to ai service. Number 1 influence to profitability is fertility and longevity and this female is a prime example of that.

30 Wiwa Creek Kinochtry 1836

2076313 :: JT 36F :: April 01 2018 :: BW-73

Sire HOOVER NO DOUBT
PEAK DOT NO DOUBT 207D
ANNIE K OF PEAK DOT 722W

Dam SAV ANGUS BEEF 3231
WIWA CREEK KINCHTRY 500'15
BT R KINCHTRY BEAUTY 387

bw	ww	yw	milk	tm	sc	ce	mce
2.9	54	96	21	48	-	2.5	7.0

Exposed to Wiwa Creek Angus Beef 611'16 from June 3 - Jul. 5

Exposed to Wiwa Creek Harvest Moon 635'16 from Jul. 16 - Aug. 6

Wiwa Creek Angus let us have the pick of their replacement pasture and have consigned two great females. Wiwa Creek Kinochtry 1836 is an attractive female with an angular front end and stands on perfect feet. Her pedigree is a neat combination of Hoover No Doubt, SAV Angus Beef and SAV Harvester. Wiwa Creek Kinochtry 1836 is built for the long haul.

\$5,000
GT ANGUS



31 Wiwa Creek Kinochtry 1815

2076297 :: JT 15F :: March 20 2018 :: BW-72

Sire HOOVER NO DOUBT
PEAK DOT NO DOUBT 207D
ANNIE K OF PEAK DOT 722W

Dam SAV ANGUS BEEF 3231
WIWA CREEK KINCHTRY 653'16
BT R KINCHTRY BEAUTY 387

bw	ww	yw	milk	tm	sc	ce	mce
3.4	55	97	21	49	-	-	-

Exposed to Wiwa Creek Angus Beef 611'16 from June 3 - Jul. 5

Exposed to Wiwa Creek Harvest Moon 635'16 from Jul. 16 - Aug. 6

Both of these Wiwa Creek females are full siblings in blood and share the same base elements to a foundation. Strong feet, maternal looking through their head and front end and natural fleshing ability. Wiwa Creek Angus has one of the most impressive cowherd you will find and we are thrilled to have two of their best on offer in this sale.

\$5,250
WALDNER ANGUS



\$9,500

PERROT CATTLE CO

32 Brooking Pridemere 8146
2041363 :: JSTN 146F :: February 15 2018 :: bw-80

Sire CONNEALY EARNAN 076E
BROOKING BANK NOTE 4040
E A ROSE 918

Dam O C C LEGACY 839L
CROWFOOT PRIDEMERE 6226S
CROWFOOT FORKS 678K

bw	ww	yw	milk	tm	sc	ce	mce
1.3	48	82	14	38	0.57	7.0	7.0

Exposed to Brooking Back Bar 8049 from Apr. 20 - Jul. 20
Ultrasound estimated due Feb. 7/2020

Brooking Pridemere 8146 is deep centred and massive bodied. She stands on extra bone and has that unmistakable Bank Note look. These Bank Note daughters make great females and the bulls are in huge demand in all bull sales they are in. The kind to build a herd around.

\$8,000

**RENEGADE RIDGE
LIVESTOCK**

33 Brooking Queen 8006
2026999 :: JSTN 6F :: January 03 2018 :: bw-78

Sire HF KODIAK 5R
SOO LINE MOTIVE 9016
TLA BEAUTY 5R

Dam BROOKING BANK NOTE 4040
BROOKING QUEEN 6025
SCR QUEEN 50852

bw	ww	yw	milk	tm	sc	ce	mce
2.1	60	101	23	53	-	2.0	4.0

AI Bred on April 4/19 to SAV Rainfall (safe)

Exposed to Brooking Back Bar 8049 from Apr. 20 - Jul. 20
Wow is this heifers udder development the way we want it. This maternally punched pedigree stacks a Bank Note and Motive combination, the two leading sires for registrations in Canada among Canadian born sires. Safe to early service to SAV Rainfall will only add to the incentive to add this promising female to your herd.

34 Brooking Cordella 8145

2027089 :: JSTN 145F :: February 13 2018 :: bw-83

Sire CONNEALY EARNAN 076E
BROOKING BANK NOTE 4040
E A ROSE 918

Dam BALDRIDGE NAVIGATOR N5
G BAR H CORDELLA 885
G BAR H CORDELLA

bw	ww	yw	milk	tm	sc	ce	mce
2.4	56	98	18	46	0.99	2.5	8.5

Exposed to Brooking Back Bar 8049 from Apr. 20 - Jul. 20
Ultrasound estimated due Feb. 7/2020

A Bank Note daughter out of a cow we acquired in the Flag Ranch dispersal in Nebraska where we purchased a group of females that have been very good for us. The dam is still in production this year at 11 years of age. Bred to calve about Feb 8 to Brooking Back Bar 8049. A son of the great TLA Beauty 6R.

\$4,000

HANK & MARIA

FRANKEN



35 Brooking Miss Pansy 8065

2027036 :: JSTN 65F :: January 20 2018 :: bw-80

Sire CONNEALY EARNAN 076E
BROOKING BANK NOTE 4040
E A ROSE 918

Dam HF KODIAK 5R
MISS BAN PANSY 12W
PANSY OF PEAK DOT 803S

bw	ww	yw	milk	tm	sc	ce	mce
2.1	55	96	16	44	-	3.5	8.5

AI on April 4/19 to PF OKLAHOMA (safe)

Exposed to Ellingson Remedy 6452 from Apr. 20 - Jul. 20

What a looker we have here in Brooking Miss Pansy 8145. She is attractive, bold sprung and has that look at me attitude. Her dam is one of the top Kodiak daughters in production and is docile, productive and extremely easy fleshing.

\$8,750

JASON MORRISON



Pansy 12W :: Dam

\$10,000

MATLOCK FARMS LTD

36 Brooking Lass 8095

2027055 :: JSTN 95F :: February 03 2018 :: bw-84

Sire CONNEALY EARNAN 076E
BROOKING BANK NOTE 4040
E A ROSE 918

Dam BAR-E-LTHOR 6T
SOO LINE LASS 2074
SOO LINE LASS 8397

bw	ww	yw	milk	tm	sc	ce	mce
2.5	61	104	26	57	-	4.0	9.0

AI on April 4/19 to PF OKLAHOMA (safe)

Exposed to Ellingson Remedy 6452 from Apr. 20 - Jul. 20

Introducing the powerhouse of the offering. Brooking Lass 8095 stands on a large diameter of bone, is wide in her construction and has added size. Her dam is a full sister to the dam of Brooking Prosecutor 222 the 2014 Agribition Reserve Grand Champion Bull.

\$4,750

HAYNES ANGUS

37 Brooking Queen 8105

2027065 :: JSTN 105F :: February 05 2018 :: bw-91

Sire CONNEALY EARNAN 076E
BROOKING BANK NOTE 4040
E A ROSE 918

Dam HF INSTIGATOR 115B
BROOKING QUEEN 6163
BROOKING QUEEN 4028

bw	ww	yw	milk	tm	sc	ce	mce
4.9	58	103	15	44	-	-3.0	5.0

Exposed to Brooking Back Bar 8049 from Apr. 20 - Jul. 20
Ultrasound estimated due Mar. 5/2020

We just love our Bank Notes in production. Many of the highlights in our bull pen are out of Bank Note mothers. I sound like a broken record on these Bank Note daughters but if you see one you have seen them all. They are all stamped with the "Bank Note look".

38 Brooking Blackbird 8169

2027099 :: JSTN 169F :: March 05 2018 :: bw-87

Sire CONNEALY EARNAN 076E
BROOKING BANK NOTE 4040
E A ROSE 918

Dam S A V 004 DENSITY 4336
BROOKING BLACKBIRD 206
FLAG MISS BLACKBIRD 90548

bw	ww	yw	milk	tm	sc	ce	mce
2.7	56	97	16	44	-	2.5	7.5

Exposed to Brooking Back Bar 8049 from Apr. 20 - Jul. 20
Ultrasound estimated due Feb. 5/2020

One of our absolute favourite bulls of all time is Density. We are implementing him into many of our pedigrees. Here is a Bank Note x Density female that is exactly what you would expect. Brooking Blackbird 8169 is well-made, angular fronted, feminine head, sound hoof structure and shows a productive functional look.

\$4,000

HEINZ CATTLE CO



Bank Note 4040 :: Sire

39 Brooking Royal Lass 8090

2027053 :: JSTN 90F :: February 02 2018 :: bw-82

Sire CONNEALY EARNAN 076E
BROOKING BANK NOTE 4040
E A ROSE 918

Dam SOO LINE MOTIVE 9016
BROOKING ROYAL LASS 4042
WERNER ROYAL LASS 4218

bw	ww	yw	milk	tm	sc	ce	mce
2.1	56	97	19	47	-	4.0	7.0

AI on April 4/19 to PF OKLAHOMA (safe)

Exposed to Ellingson Remedy 6452 from Apr. 20 - Jul. 20
Brooking Royal Lass 8090 is an easy fleshing female that owns added substance of bone yet has a feminine head. Her dam is a full sister to the Brooking Deja Vu herdsire that has done so well in the Windy Hill herd. Bred early service to Canadian Sires member PF Oklahoma. We used Oklahoma due to his calving ease reports and is backed by a cow family we believe in.

\$5,900

RENEGADE RIDGE LIVESTOCK



\$4,250
GLEN GABEL



40 Brooking *Royal Lass* 8163
2034943 :: JSTN 163E :: February 25 2018 :: bw-85

Sire SAV HARVESTOR 0338
BROOKING HEIRLOOM 6146
E A ROSE 918

Dam SOO LINE MOTIVE 9016
BROOKING ROYAL LASS 4055
WERNER ROYAL LASS 4218 NHF

bw	ww	yw	milk	tm	sc	ce	mce
3.4	52	94	23	49	-	5.0	7.0

Exposed to Brooking Back Bar 8049 from Apr. 20 - Jul. 20
Ultrasound estimated due Apr. 5/2020

Another member of the Royal Lass cow family that is easy-doing, quiet natured, and has extra substance. The sire is a maternal brother to Bank Note that we used as walking service sire.

\$1,300/EMBRYO
HEINZ CATTLE CO



41 Brooking *Blackcap* 7029
1967670 :: JSTN 29E :: Jan 11/17 :: bw-82

Sire SAV BISMARCK 5682
BAR-E-L NATURAL LAW 52Y
BAR-E-L MAGNOLIA 143K

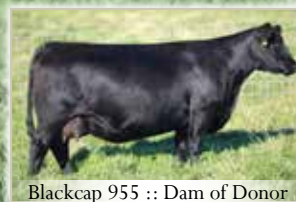
Dam SAV NET WORTH 4200
SCHAFF BLACKCAP 955
J J R BLACKCAP 104K

bw	ww	yw	milk	tm	sc	ce	mce
2.4	53	90	22	49	-	3.0	8.0

A) 3 embryos by Brooking Gold Coin 8069

-Embryos stored at Bow Valley, Bassano, AB

Brooking Blackcap 7029 is a next generation donor for us at Brooking. She has a high quality phenotype that is hard to match. We love her feminine and angular front end, level hip, massive body and she is heavy milking with an ideal udder quality. She is just a two-year old daughter of Bar-E-L Natural Law and out of the impressive donor, Schaff Blackcap 955. The sire mating to the \$50,000 Brooking Gold Coin will be among the first genetics ever out of this promising sire.



Blackcap 955 :: Dam of Donor

42 Brooking Beauty 6051

1906234 :: JSTN 51D :: January 23 2016 :: bw-83

Sire CONNEALY EARNAN 076E
BROOKING BANK NOTE 4040
E A ROSE 918

Dam SAV 004 DENSITY 4336
SOO LINE BEAUTY 1027
SOO LINE BEAUTY 9041

bw	ww	yw	milk	tm	sc	ce	mce
2.9	81	136	19	60	-	4.0	7.0

A) 3 or 5 IVF embryos by SAV America 8018

B) 3 or 5 IVF embryos by SAV Renovation 6822

-Embryos stored at Transova, Onida, SD

Brooking Beauty 6051 is our absolute favourite female we own. She has been a standout since the day she was born. Brooking Beauty 6051 is perfect in her phenotype and extreme in her angularity and attractiveness yet is bold in her rib shape and wide in her hip structure. She is heavy milking with an ideal udder and has great feet. Her first bull calf brought \$25,000 and we are retaining her second. We are in love with this female and can't wait to get a lot of progeny in production. Imagine her combination with these two sires of the embryos. One of them is the world record selling bull at \$1.51 million and both share the same cow on the bottom side.

43 Soo Line Annie K 9165

1504834 :: SOO 165W :: January 31 2009 :: bw-90

Sire TC STOUT 407 AMF CAF NHF
BAR-E-L THOR 6T
BAR-E-L 365 ENCHANTRES 36J

Dam CUDLOBEYELLOWSTONE 80M
SOO LINE ANNIE K 6271
SOO LINE ANNIE K 3012

bw	ww	yw	milk	tm	sc	ce	mce
3.4	42	78	31	52	0.69	8.0	10.0

A) 3 OR 5 embryos sired by BAR -E-L Natural Law 52Y

B) 3 OR 5 embryos sired by SAV Renovation 6822

C) 3 OR 5 embryos sired by Brooking Gold Coin 8069

-Embryos stored at Bow Valley, Bassano, AB

Soo Line Annie K 9165 has been a prolific producer as the dam of the \$63,000 Brooking Rendezvous, \$30,000 Brooking Trendspotter and her most famous daughter is, Brooking Annie K 390, who is the dam of the \$95,000 Brooking Firebrand. Soo Line Annie K 9165 was a RBC Supreme Champion female and was at side of her dam when they won Champion female at the World Angus Forum. I am not sure which one of these mating I would choose first but I am excited about them all.

A) \$3,750 / EMBRYO

RUST MOUNTAIN VIEW

B) \$2,275 / EMBRYO

KCH CHAROLAIS



SAV AMERICA 8018
\$1.51 Million sire of embryos

A) \$1,625 / EMBRYO

KT RANCHES

B) \$1,225 / EMBRYO

KCH CHAROLAIS

C) \$1,250 / EMBRYO

COWTRAX CATTLE CO



Gold Coin :: Sire of C) Embryos



Brooking *Gold Coin* 8069
BROOKING BANK NOTE 4040 X SAV EMBLYNETTE 4223

owned with:
ZWT Ranch - Tennessee



PLEASE JOIN US ON MONDAY, MARCH 23

WE HAVE 100 BULLS ON TEST AND THEY ARE BY FAR OUR BEST SET TO DATE





THANK YOU

TO OUR FAMILY, FRIENDS AND CUSTOMERS FOR ALL THAT YOU DO FOR US



BOHRSON
MARKETING SERVICES

RR 4 SITE 7 BOX 28 OLDS, AB T4H 1T8



RETURN POSTAGE GUARANTEED
PORT DE RETOUR GARANTI

WWW.BROOKINGANGUSRANCH.COM

BROOKING
—ANGUS RANCH—

Open Book Invitational
CLOSEOUT AT 7PM ON NOV. 18