



SALE RESULTS

50 LOTS GROSSED \$223,200 TO AVERAGE \$4,464

41st Annual

KEYSTONE
KONNECTION

TUESDAY DECEMBER 10TH 2019 - BRANDON, MB

Simmental Sale

SALE DAY INFORMATION

Sales Management

Bohrson Marketing Services Ltd.
Scott Bohrson 403-370-3010
Darryl Snider 780-385-5561
Matt Criddle 306-539-6934

Sales Staff

Dan Skeels, Auctioneer 403-783-1217
Nathan Marin, Ringman 306-869-7130
Keystone Livestock, Insurance 204-728-3058

Special Representatives

Garth Rancier, Canadian Simmental Association
Tracey Wilcox, Manitoba Simmental Association
Laurelly Beswitherick, Manitoba Simmental Secretary
John & Joanne Best, Simmental Focus

Sale Accomodations

Canada Inns 204-727-1422
Days Inn, Brandon 204-717-3600

Delivery

\$100 per head within 400km to a maximum of \$300 per farm. Other destinations at buyers expense. USA purchases delivered to the border with buyer responsible for export costs. Delivery to be arranged through sale management.

Internet Viewing & Bidding through DLMS

Melissa McRae 204-573-9903
Mark Shologan 780-699-5082



Catalogue Design by Bohrson Marketing

The information printed has been supplied by the seller and believe to be accurate. Updated sheets and announcements from the block will take precedence over any incorrect printed material.

PRESIDENT'S MESSAGE

Welcome to the 41st Keystone Konnection Simmental sale. The keystone simmental association is comprised of a group of passionate and dedicated breeders throughout Manitoba and south east Saskatchewan. This sale would not be successful without the continuous support of all previous bidders and buyers.

With the variety of breeders consigning this year, there is sure to be a female here to work for you and your program. I wish everyone the best of luck! We will see you on sale day.

Thank you
Nick Fletcher



SALE DAY TUESDAY, DECEMBER 10TH 2019

1PM- CANADA ROOM, KEYSTONE CENTRE

KOHUT LAND & LIVESTOCK



Kohut Land and Livestock is a 3rd generation family farm located southeast of Souris, MB. Jamie, his wife Shannon, and their children Riley and Jackson run 1500 acres of grain and a 240 cow calf operation.

Since buying my first Simmental cows in 1990, I have grown my herd by consistently retaining my own heifers and predominantly using Simmental genetics to grow our herd to the size it is today. We have been very pleased with the feet and milking ability of our cows. In recent years, we have been selling our steers right off the cow and have been thoroughly pleased with our weaning weights and the quality of calves at sale time.

After being in the cattle business for over 25 years, and always trying to improve our herd, we feel the Simmental breed has had a huge impact on our goal of developing a herd of quality functioning cattle.

We are very grateful for the recognition of our efforts and look forward to using Simmental genetics in the future.

Jamie Kohut
Kohut Land and Livestock

SALES MANAGEMENT

41 years is a large accomplishment and what a milestone for the Keystone group to obtain. Congratulations on the past success and here is to many more of offering high-quality genetics to the industry. The breeders have sure brought their best to town this year and we are confident in the depth of quality in the barns on December 10th.

We got program enhancing genetics throughout the whole offering whether you are seeking red, black or fullblood. We welcome back Cherry Creek with their impressive set of bulls on offer. They've been a mainstay in this sale for many years and this could be the deepest set to date and worth the drive. The bred on offer are what keeps the Simmental breed in the forefront as they offer power and dimension while being designed to be great momma cows. Many of the open heifers have been on the show road and rightfully so but most importantly they are the cream of the crop from each program and are sure the right type to invest in with confidence to boast your own herd with fresh genetics. We are excited to incorporate some new embryos and pregnant recip female in this years event to be able offer some great genetics from those respected programs.

The progressive breeders behind this event are offering their very best once again and after Snider and Criddle visited each program this summer, they were very impressed with the offering. This truly is one of our most enjoyable sales of the fall with the quality cattle backed by great consignors to visit with in the best sale facility in Canada. We encourage you to attend this sale but if you cant due to your busy schedule, feel free to contact any of us at BMS to represent your needs in a professional manner. We look forward to seeing you at the 41st Annual Keystone Konnection Sale!

Scott Bohrson
Bohrson Marketing Services Ltd.
www.Bohrson.com



BOHRSON
MARKETING SERVICES

RR4 SITE 7 BOX 28
OLDS, AB T4H 1T8
bohrsonoffice@gmail.com

CHERRY CREEK FARMS



ED & LYNN ANDERSON
BOISSEVAIN, MB
H: 204-534-6096 | C: 431-255-0001

Once again we would like to extend a warm welcome to the Keystone Konnection 41st Annual sale. Cherry Creek has been a part of this remarkable event for the past 31 years. All of this is only possible by the support of our many visitors, bidders and buyers of all the previous sales, their patronage and confidence in our program of raising only the best is inspiring. We continuously try to select only the elite sires for use in our AI program each year. 2019 has been very inspiring and rewarding by the number of folks who have travelled from the different provinces to view our females and calves.

All animals have been treated with Ivomec. Our vaccination program includes Bori-Shield One Shot, Ultrabac 7, somlubac at 3 months and at weaning. Cherry Creek is enrolled in the CSA Total Herd Program.

1

CHERRY CREEK WARREN 15F

1289455 • Nov. 21, 2018 • ANDR 15F • FULLBLOOD • HORNED

BULL

BW	WW	YW	CE	BW	WW	YW	MK	MCE
xx	xx	xx	0.4	6.0	74.9	110.7	35.5	-1.1

ANCHOR D VIPER 103W
SUNNY VALLEY DAKOTA 9Z
 SOUTH SEVEN MISS 58X

DOUBLE BAR D MAESTRO 100S
 PRL LOPEZ 147L
 EAGLE-RIDGE UNIVERSAL 31U
 SOUTH SEVEN MISS 96U

FGAF MAGNUM 901Z
CHERRY CREEK NOLA 22C
 CHERRY CREEK JAYLA 17U

ALLM COLOSSAL 25U
 VIRGINIAS UPTOWNGAL
 EXODUS
 MJ MISS STAR 18K

This impressive meat machine has been a standout since birth. His dark red dam does a tremendous job every year and has an excellent udder, feet and legs. He has lots of length and thickness and moves well on a good set of feet. Lots of eye appeal and excellent temperament. Don't miss this opportunity.

LOT 1

\$6,250

DAVID REMMICK



Nola 22C, dam of lot 3



Dakota 9Z, sire to lot 1

LOT 2

\$4,000
REG LOEWEN



Alysa 8D, dam of lot 2

LOT 2:

He has been an absolute standout since birth. Everyday he got thicker and thicker. Solid coloured with goggles, excellent feet and legs. He is a real meat machine with tons of performance and eye appeal. His young dam has an excellent udder and is becoming one of our top cows. Excellent disposition, don't miss him.

2

CHERRY CREEK CROWN 5G

1289511 • Jan 22, 2019 • ANDR 5G • FULLBLOOD • HORNED

BULL

BW	WW	YW	CE	BW	WW	YW	MK	MCE
93	692		12	1.7	61.4	84.2	36.3	5.7

FGAF SELDOM 835L
FGAF GUERRERO 810Y
NOSSATERRA REAL WISH 69U

ALLM COLOSSAL 25U
CHERRY CREEK ALYSA 8D
CHERRY CREEK AYL A 37X

OVERHALL HIVY
RAJ MS ARNOLD 21F
ANCHOR "T" LEGEND 7H
GIBBY'S RORY 25R

BBBG WRANGLER 3S
FGAF ADRIA 126P
GIBBY'S ULTIMATE 29S
CHERRY CREEK ANJA 1P

3

CHERRY CREEK RHETT 6G

1289502 • Jan 24, 2019 • ANDR 6G • FULLBLOOD • POLLED

BULL

BW	WW	YW	CE	BW 1.1	WW	YW	MK	MCE
94	702		12.7		58.4	82.5	36	6.8

FGAF SELDOM 835L
FGAF GUERRERO 810Y
NOSSATERRA REAL WISH 69U

SUNNY VALLEY DAKOTA 9Z
CHERRY CREEK ELLA 24D
CHERRY CREEK ELIN 9Z

OVERHALL HIVY
RAJ MS ARNOLD 21F
ANCHOR "T" LEGEND 7H
GIBBY'S RORY 25R

ANCHOR D VIPER 103W
SOUTH SEVEN MISS 58X
CROSSROAD TUXEDO 222T
TRI-R LADY PORSCHA 14P

LOT 3:

Another smooth polled Guerrero herdsire with an excellent disposition. Lots of performance here and excellent legs and feet. His dark liver red colour makes him stand out. His beautiful liver red dam is made correct with excellent legs, feet and udder. His granddam, Ella 9Z is an awesome cow who has her son working for Stoset Bros, Alberta. Mark this bull high on your list!

LOT 3

\$6,250
REG LOEWEN



Ella 24D, dam of lot 3

4**CHERRY CREEK WYLIE 4G**

1289504 • Jan 18, 2019 • ANDR 4G • FULLBLOOD • HORNED

BW	WW	YW	CE	BW	WW	YW	MK	MCE
104	710		9.8	3.1	63.3	88.5	35.8	4.2

FGAF SELDOM 835L

FGAF GUERRERO 810Y

NOSSATERRA REAL WISH 69U

FGAF MAGNUM 901Z

CHERRY CREEK OPAL 21D

TRI-R LADY PORSCHA 14P

OVERHALL HIVY

RAJ MS ARNOLD 21F

ANCHOR "T" LEGEND 7H

GIBBY'S RORY 25R

ALLM COLOSSAL 25U

VIRGINIAS UPTOWNGAL

GIDSCO APOLLO 3F

SMITHBILT MITZI 134M

Another thick Guerrero bull off of an excellent Magnum daughter. Magnum makes excellent mothers with milk and performance. He is very correct, thick, lots of performance, good legs and feet. Quiet disposition, don't miss him.



Opal 21D, dam of lot 4

5**CHERRY CREEK ADVANCE 1G**

1289513 • Jan 4, 2019 • ANDR 1G • FULLBLOOD • POLLED

BW	WW	YW	CE	BW	WW	YW	MK	MCE
93	788		13.8	0.9	61.3	84.3	35.2	6.9

FGAF SELDOM 835L

FGAF GUERRERO 810Y

NOSSATERRA REAL WISH 69U

FGAF MAGNUM 901Z

CHERRY CREEK SADEE 2D

CHERRY CREEK EMMA 1W

OVERHALL HIVY

RAJ MS ARNOLD 21F

ANCHOR "T" LEGEND 7H

GIBBY'S RORY 25R

ALLM COLOSSAL 25U

VIRGINIAS UPTOWNGAL

CEN LAREDO 519L

TRI-R LADY PORSCHA 14P

This young smooth polled herd sire has been a standout since birth. His beautiful young Magnum dam has an excellent udder, feet and legs. He is dark liver red with goggles. Lots of performance and thickness here with a great disposition. Guerrero calves come easily. Don't miss this eye catching young bull on sale day.



Sadee 2D, dam of lot 5

6**CHERRY CREEK NOLAN 19F**

1289496 • Dec 26, 2018 • ANDR 19F • FULLBLOOD • POLLED

BW	WW	YW	CE	BW	WW	YW	MK	MCE
98	850		2.3	5	64	89.6	33.9	-2.2

ALLM COLOSSAL 25U

FGAF MAGNUM 901Z

VIRGINIAS UPTOWNGAL

EXODUS

CHERRY CREEK JAYLA 17U

MJ MISS STAR 18K

BBBG WRANGLER 3S

FGAF ADRIA 126P

CHAMPS ROMANO

VIRGINIA'S MS PEBBLES

EISENHERZ

ROBE

ANCHOR "T" METRO 4E

DEMBY MISS STAR 194X

Here is a smooth polled, dark red bull off of one of our top cows. She has an excellent udder and never misses. He has the length, thickness, good feet and legs, and disposition to make an excellent herd bull.



Jayla 17U, dam of lot 6

6**KEYSTONE KONNECTION**

BIG SKY SIMMENTALS



TREVOR, AMY, AUSTYN, KINLEY AND MAVERICK PETERS RIVERS, MB

TREVOR: 204-741-0967 | AMY: 204-573-3039

AMYLNNPETERS@HOTMAIL.COM

WWW.BIGSKYSIMMENTALS.COM

Another year has come and gone and here we are Welcoming you all to the 41st annual Keystone Konnection sale. All of us at Big Sky are very excited to be offering 3 very strong bred females to the industry. They are all powerful and complete in their own way and will fit many programs. With our kids growing up and becoming more involved with the cattle, you will find these females to be an absolute treat to work with. If you are unable to attend feel free to contact us and stop by to have a look at the females, at the farm in Rivers. As well as have a tour of our private treaty bull sale pen, where we have some very exciting brothers to our sale heifers. We look forward to catching up with everyone come sale day, at the amazing Keystone facility. Wishing everyone the best of luck with this tough fall and hope mother nature is more accommodating in the coming months.

7

BIG SKY BECKY 4F

1257369 • Jan 6, 2018 • MMV14F • FULLBLOOD • HORNED

BRED HEIFER

BW	WW	YW	CE	BW 6	WW	YW	MK	MCE
88	804	978	0.9		74.1	100.3	34.9	-0.8

ALLM COLOSSAL 25U
BIG SKY BUBBA 301B
 BIG SKY ERIN

GREAT GUNS ASTROS 3X
BIG SKY BIRDIE 3B
 WOLFES WANDA FF52W

BBBG WRANGLER 3S
 FGAF ADRIA 126P
 GIBBONS JEREMIAH
 MFL ERIN 30E

GREAT GUNS TX HANS 96N
 GREAT GUNS PETUNIA 1P
 BAR 5 SA EVAN 440L
 WOLFES SANDY FF 51S

AI bred to CEN Laredo 519L on Apr 3/19. No Exposure. Ultrasound safe to AI. A powerful Full Fleck female that should be staying home but offering our best to the industry has always been a top priority for us. This female is destined to do great things for her new owners. Natural thickness, big barrelled, and just has that broad cow look to her...not to mention she has been shown by kids for two years!! Her mama worked hard raising two keeper bull calves this year. Her sire Bubba is a home raised bull that was one of the best kept secrets we had at Big Sky. Unfortunately, we lost him to injury and got limited semen in tank. Brad keeps hoarding all his Bubba females in Alberta, so take this opportunity to acquire elite genetics that will bring your herd to the next level. Becky's maternal sister sold through this sale as a high seller two years ago to Creekside Cattle Co. Becky is bred early to Laredo, the well-known female making extraordinaire.



MMV 113D, mat. sib of lot 7

8

BIG SKY FLOWER 9F

257310 • Jan 15, 2018 • MMV19F • PUREBRED • POLLED

BRED HEIFER

BW	WW	YW	CE	BW -3	WW	YW	MK	MCE
61	631	964	17.1		64.9	108.8	28.8	8.7

KUNTZ MARSHALL 12Y
KUNTZ SHERIFF 8A
 PEACOCK'S LI'L NETTIE 23Y

NAC RASHAD 15A
CW DANIKA 36D
 PCS MISS GEDDY 215W

BMD RED WALKING TALL 13W
 TIMBER WENDY 3W
 MUIRHEAD'S KOSMO 27N
 MUIRHEAD NETTIE 5W

SPRINGCREEK RASHAD 12W
 NAC 88U
 GGL 230K
 AWL GEDDY 4P

AI bred to WHL Red Heat 1734E on Apr. 5/19. Ultrasounded safe to AI date. Exposed to AJB Rockyson 13E from Apr 20 - May 10, 2019.

Austyn showed 9F as her 4-h heifer this past year, so she is kitten quiet. A moderate framed, yet very fancy female. Austyn bought Flowers dam from this sale as an open and she is turning out to be an easy doing cow that goes about her business and raises a heavy weight each year. Her sire Sheriff just keeps doing what he was made to do. Calve easy and perform and wean off heavy progeny. A stylish top end red female too take home and let her make you money.



Sheriff 8A, sire of lot 8

9

BIG SKY FLAWLESS 10F

1257363 • Jan 16, 2018 • MMVI 10F • PUREBRED • POLLED

BW	WW	YW	CE	BW	WW	YW	MK	MCE
98	734	942	1.1	5.6	79.3	119.2	22.2	-0.4

BRED HEIFER

LRX THE GODFATHER 141Z

RKTS MAFIA 15C

TRI-R MS X-OTIC 52X

RJY CAESARS REVOLUTION 9Y

BIG SKY BIBI 55B

BIG SKY CANDY

HARVIE JDF WALLBANGER111X

LRX MS ACE 10X

KNK/CRSR RED BULL 53T

OAKVIEW MISS UPTOWN 75U

IPU REVOLUTION 172U

LRX RED RASPBERRY 71T

CHERRY CREEK CARLSBERG 2S

ELTON MS RED ELITE 4L

AI bred to WHL Red Heat 1734E on Apr. 9/19. Ultrasounded safe to AI.
Exposed to AJB Rockyson 13E from Apr 20-May 10.

Lots of performance on both sides of this female. Her Grandam weaned the heavyweight bull calf again this year, coming off at 980lbs. High performance cow family of efficient milkers with tidy udders. When you analyze this heifer, you can't help but notice her rich colour, wide topline and middle. Yet she maintains a clean, feminine front end. Looking for female that will raise you marketable calves every year. Check her out.



Red Heat , service sire of lot 9

ANTRIM SIMMENTALS



JOHN GILLAN

CLANWILLIAM, MB

H: 204-865-2392 | C: 204-867-0414

ANTRIMSIMMENTAL@GMAIL.COM

Welcome to the 41st annual Keystone Konection Sale.

This year's offering consists of 4 open heifers, 3 polled and 1 horned. Three of the heifers were sired by Black Gold Taqa 124D who is proving to be a consistent breeder. He is leaving moderate framed heifers who should develop into easy keeping cows. The other heifer is sired by Oakview Broadway 95B. Heifers have had their vaccinations, and have been treated with Solvet. If you have any questions feel free to contact me or drop by the farm to view the animals.

I look forward to seeing you at the sale.

10

ANTRIM GRACE 5G

1285554 • Jan 18, 2019 • APS 5G • FULL BLOOD • POLLED

BW	WW	YW	CE	BW	WW	YW	MK	MCE
97	815		0.5	5.1	70.7	106.1	33.9	1

OPEN HEIFER

STARWEST BRYCK

BLACK GOLD TAQA 124D

MS BGS POLL HILLORY 24W

NAC MR STALLONE 57Z

ANTRIM BROOKE

AWL MALINDA 9S

DOUBLE BAR D SPITFIRE 20X

BAR 5 SA ESMERALDA 412W

DOUBLE BAR D MADDOX 40S

MS BGS POL HILLORY 27T

CJB STALLONE FF 110X

RENDEZVOUS CHICA 72X

HARKAWAY MR STAR 38Z

BAR 5 MS THUNDER 636H

Antrim Grace is a double polled daughter of Black Gold Taqa 124D. She is dark red in color, has a level topline, and a good disposition. Her dam is a moderate framed cow with a good udder.



Taqa 124D, sire of lot 10

8

KEYSTONE KONNECTION

11

ANTRIM GERRI 8G

1285555 • Jan 20, 2019 • APS 8G • FULL BLOOD • HORNED

OPEN HEIFER	BW	WW	YW	CE	BW	WW	YW	MK	MCE
	96	724	--	3.1	5.0	72.7	108.7	32.6	1.8

FAIRVIEW ZEUS 57Z
OAKVIEW BROADWAY 95B
 BLCC MISS STRIDE 95W

STARWEST BRYCK
BLACK GOLD MS KRACKER 117D
 MS BGS POL KRACKER 22Z

MS BGS POL KRACKER 22Z
 TRIPLE F MISS MARCUS 25U
 BAR 5 SA STRIDE 413P
 BLCC MISS HOUSTON 45S

DOUBLE BAR D SPITFIRE 20X
 BAR 5 SA ESMERALDA 412W
 BGS UNCLE KRACKER 11X
 MS BGS EILEEN 29X

Antrim Gerri is an Oakview Broadway 95B daughter. She is deep red with goggles, has lots of depth, spring of rib, and a good hind quarter. Her dam is an easy keeping cow with a good udder and comes from a highly rated cow family at Black Gold.



Mr Kracker 117D, dam of lot 11

12

ANTRIM GEORGIA 13G

1285556 • Jan 25, 2019 • APS 13G • FULL BLOOD • POLLED

OPEN HEIFER	BW	WW	YW	CE	BW	WW	YW	MK	MCE
	90	778		5.3	4.2	68.4	102.9	33.7	4.2

STARWEST BRYCK
BLACK GOLD TAQA 124D
 MS BGS POLL HILLORY 24W

CHERRY CREEK RHYS 2A
K&S DENISE 18D
 ANTRIM BRYANNA

DOUBLE BAR D SPITFIRE 20X
 BAR 5 SA ESMERALDA 412W
 DOUBLE BAR D MADDOX 40S
 MS BGS POLL HILLORY 27T

CROSSROAD TUXEDO 222T
 CHERRY CREEK DAUNA 3W
 NAC HENRY 10Y
 ANTRIM MS POL 26Y

Antrim Georgia is similar in type to the other 124D daughters. She has good conformation, deep bodied, excellent hind quarter, good disposition, and walks out well on a good set of feet and legs. Her dam is a moderate framed easy keeping cow with a good udder.



412W, pat. great grandam of lot 12

14

ANTRIM GEMMA 23G

1285557 • Feb 3, 2019 • APS 23G • FULL BLOOD • POLLED

OPEN HEIFER	BW	WW	YW	CE	BW	WW	YW	MK	MCE
	105	809		4.3	4.4	68.8	105.5	33.8	5.8

STARWEST BRYCK
BLACK GOLD TAQA 124D
 MS BGS POLL HILLORY 24W

RIVERBANK MS POL 48S
ANTRIM MS POL 26Y
 ANTRIM MISS RED RIVER 14U

DOUBLE BAR D SPITFIRE 20X
 BAR 5 SA ESMERALDA 412W
 DOUBLE BAR D MADDOX 40S
 MS BGS POLL HILLORY 27T

KOP LUCKIESON 78N
 RIVERBANK MS POL 26N
 NOL RED RIVER 96L
 MRL MISS 225L

Antrim Gemma is another dark red heifer with goggles. She has lots of length and good depth of body. Her dam is a dark red ,goggle eyed, larger framed cow with a good udder.



BLAIR WORKMAN & SON SIMMENTALS



CALVIN, JENN, JOSH AND KENNIDY
 ROSSBURN, MB
 CALVIN: 204-764-0260
 CWORKMAN@MYNETSET.CA

Welcome to another edition of the Keystone Konnection Simmental Sale!!! This year we have brought out 2 red heifers right out of the top of our heifer pen. Both heifers are backed by very strong cow families!!!! If you have any questions or want to come to the farm to view the heifers in there natural environment feel free to give me a call. We hope to see everyone on Sale day but if you are unable to attend you can call any of the very capable Bohrson staff or bid online with DLMS.

15

CW GRETA 19G

1292674 • Jan 29, 2019 • CBW 19G • PUREBRED • POLLED

OPEN HEIFER	BW	WW	YW	CE	BW	WW	YW	MK	MCE
	87			4	4.7	66.9	101.6	29.5	3.2

WHEATLAND RED EARTH 294Z
AVF RUSTIC EARTH 237C
 ACOMBS MS TYNDAL 237Z

WHEATLAND RED EARTH 74X
 WHEATLAND LADY 432P
 ACOMBS MIGHTYKINGDOM 669W
 ACOMBS TYNDALSDELIGHT440P

NAC RASHAD 13A
CW CHILI FLAKE 34C
 NCK NELLA 75N

SPRINGCREEK RASHAD 12W
 XXC 91U
 MRLN ROGAR
 MRLN ELRICA

Greta is a thick topped moderate framed heifer out of a very well put together single red cow. 19G is out of our calving ease bull RusticEarth. Greta's full brother sold to Jack Pool from Eriksdale this past spring in the Lunder Bull Sale.



CW Freddy 34F, full sib of lot 15

16

CW GELATO 22G

1292675 • Jan 30, 2019 • CBW 22G • PUREBRED • POLLED

OPEN HEIFER	BW	WW	YW	CE	BW	WW	YW	MK	MCE
	92			8.1	3.1	67.2	96	24.3	2.9

DCR MR MOON SHINE X102
TNT BOOTLEGGER Z268
 TNT MISS W70

R PLUS 7077T
 DCR MS SHEARCROCK U302
 TNT GUNNER N208
 TNT MISS S47

DANA RED ABSOLUTE 44R
CW MS WINKS 15W
 BAR 5 MS PRIME TIME 268K

IPU RED VENTURE 53L
 DANA HONEY 105N
 SLEEPY HOLLOW PRIME TIME
 BAR 5 LADY DI 1285C

CW GELATO is a tough heifer to let go but we wanted to bring out our best to this sale. 22G is a deep sided long bodied heifer out of Bootlegger. Gelato is out of no other then my 15W cow who has never missed. 15W has progeny working for Triple T Diamond,(Lunder MB), Shyrlene Diell (Oak Point, MB) and Shepell Farms (Fisher Branch).



Bootlegger, sire of lot 16

CREEKSIDE CATTLE CO.



EDEN, MB ♦ SIMMENTAL ♦ CSCC

AD, DEBBIE & SYDNEY DE KONING

EDEN, MB

AD'S CELL: 204-476-6058 | SYDNEY'S CELL: 204-212-0867

OFFICE: 204-966-3342 | HOME: 204-966-3835

DEBORAD@HOTMAIL.CA

Welcome to the 41st annual Keystone Konection sale, we're excited about the two open heifer calves that we have consigned this year. Both heifer calves have well balanced pedigrees that contain both calve ease and performance from some of the industry's leading bulls.

17 CSCC BLACK GODDESS 220G

1288216 • Jan 8, 2019 • CSCC 220G • PUREBRED • POLLED

OPEN HEIFER	BW	WW	YW	CE	BW	WW	YW	MK	MCE
	91	668		9.3	2.1	74.4	110.4	23.7	5.7

LFE VIPER 455U
NCB COBRA 47Y
 NCB MISS DREAM 22T

 CDP HAWKEYE 12C
CDP MISS ELLIE
 CDP SHADY LADY 25P

TNT TOP GUN R244
 LFE CHARO 56K
 CNS DREAM ON L186
 NUG SANDY 506R

 MR HOC BROKER
 CDP BLACK BELT 19A
 RKTS ALLIANCE 2Y
 CDP SHADY LADY 8S

Check out this sweet little baldy! Goddess comes off of a first calver that did a tremendous job on her first calf, and is sired by NCB Cobra - a tried and true calving ease sire that adds performance to all of his progeny. A few things we really admire about this heifer are her depth of rib, beautiful front end, her effortless style, completed with that chrome blaze.



Cobra 47Y, sire of lot 17

18 SYD GEM 444G

1283226 • Jan 19, 2019 • SYD 444G • PUREBRED • POLLED

OPEN HEIFER	BW	WW	YW	CE	BW	WW	YW	MK	MCE
	82	611		9.5	2.5	71.6	104	20.3	5.2

WS PILGRIM H182U
CLLT ALLIANCE 91C
 BROOKS SHINIA 1A

 MR CCF VISION
PWK/PERKS SISTER ANNE 5D
 JDF SISTER ANNE 361A

CNS DREAM ON L186
 WS MARLA 276M
 BB BARACK 1017T
 BROOKS RED HOT Y17

 MR NLC UPGRADE U8676
 GCF MISS ELSA
 HARVIE JDF WALLBANGER111X
 JDF ANNIE 16X

An Alliance x Vision heifer calf off of my favourite working female on the yard, PWK/Perks Sister Anne. Gem offers the perfect balance of calve ease and performance, breeding options on this heifer calf are endless because she carries an extremely clean front end from both her sire and her dam. This heifer might be a little smaller but as we've seen with the Alliance offspring in the past, they come into their full bloom late fall/early winter and turn into exceptional breeding females.



CREST VIEW LAND & CATTLE CO. LTD.



CREST VIEW LAND & CATTLE CO LTD
TERRY WOYCHYSHYN & FAMILY
 ERICKSON, MB
 H: 204-865-2213 | C: 204-867-7139
 CRESTVIEWLTD@GMAIL.COM

Welcome to the 41st annual Keystone Konnection Sale; one we are proud to say we've been a part of for many years. This sale is one I believe has withstood the test of time as the breeders involved dig deep in their herds to only bring their best to town. A great group of consignors coupled with the hard work of Scott and his crew of Bohorson Marketing will make it another good event. Speaking of digging deep we have done just that bringing you five red bred's right off the top of the herd; as per usual contemplating whether some of them should be staying home to work there! We have brought you a sampling of our walking bull genetics as well as our AI division. All these girls are mated to the WFL Absolute calving ease bull that we have used extensively with great results. Look forward to visiting with you all on sale day, and if you have any questions regarding our offering don't hesitate to call.



CREST VIEW RANCH
GREG & AMANDA WOYCHYSHYN
 & FAMILY
 MINNEDOSA, MB
 H:204-636-2677 | C: 204-867-7110
 CRESTVIEWCATTLECO@HOTMAIL.COM



19 CREST'S VIEW 58F

1291268 • Feb 7, 2018 • CSV 58F • PUREBRED • POLLED

BRED HEIFER	BW	WW	YW	CE	BW	WW	YW	MK	MCE
	92	865		6.1	4.2	76.8	117.1	24.5	2.6

TNT BOOTLEGGER Z268
MRL CAPONE 130B
 MRL MISS 836W

NAC PETE 18Y
CREST'S VIEW 91A
 CREST'S VIEW 40U

DCR MR MOON SHINE X102
 TNT MISS W70
 MRL BLACK BEAR 79S
 MRL MISS 828S

SPRINGCREEK RASHAD 12W
 NAC 88U
 THSF FREEDOM 300N
 CREST'S-VIEW MELISSA 19J

AI bred to WFL Absolute 51Y on May 1/19. Preg tested safe.
 A dark red more moderate kind of a heifer with lots of volume and middle to her. She is a thick made heifer with lots of depth of quarter, and a nice tidy head on her. This is a sampling off the MRL Capone bull we have been using in our AI program with great results in both the female and bull end of things. They seem to be easy fleshing good usable kinda cattle.

Owner: Crest View Land & Cattle



Capone 130B, sire of lot 19

20 CREST'S VIEW 65F

1291274 • Feb 21, 2018 • CSV 65F • PUREBRED • POLLED

BRED HEIFER	BW	WW	YW	CE	BW	WW	YW	MK	MCE
	103	765		1.3	6.5	70.4	105.6	28.8	-1.3

KUNTZ SUPER DUTY 4Y
OAKVIEW CENTERFIRE 139C
 KOP MS BENGIE 6P

PCS TOBLERONE 210T
CREST'S VIEW 59X
 CREST'S-VIEW SIBYL 62L

NCB RED SUSPECT 30S
 MISS R PLUS 7037T
 R PLUS 2169M
 KOP MS FREIGHTLINER 34M

CNS DREAM ON L186
 LRX BLACK BELLE 12R
 WOODSONG RED LAD 483C
 FM MS UNIVERSE 2C

AI bred to WFL Absolute 51Y on Apr.22/19. Preg tested safe.
 Another Centrefire daughter made a lot alike to her half sister 72F with that cowy look about her. A heifer with a good length of spine and spring of rib to her, sure to go on to make a brood cow. With that touch of chrome on her face and mated Absolute results should be most appealing!

Owner: Crest View Land & Cattle



Absolute, service sire of lot 20

21

CREST'S VIEW 68F

1291275 • Feb 26, 2018 • CSV 68F • PUREBRED • POLLED

BRED HEIFER

BW	WW	YW	CE	BW	WW	YW	MK	MCE
110	795		6.1	5.2	78	118.9	30.3	5.9

LFE VIPER 455U
NCB COBRA 47Y
 NCB MISS DREAM 22T

NAC PETE 18Y
CREST'S VIEW 84A
 CREST'S VIEW 71X

TNT TOP GUN R244
 LFE CHARO 56K
 CNS DREAM ON L186
 NUG SANDY 506R
 SPRINGCREEK RASHAD 12W
 NAC 88U
 PCS TOBLERONE 210T
 CDP KARLSON'S IMAGE 44J

AI bred to WFL Absolute 51Y on Apr.18/19. Preg tested safe.
 Here is a blood red lengthy daughter of the NCB Cobra bull that we have used in our operation for a number of years with great results. Out of one of our NAC Pete females which we have numerous with lots of maternal to them. A clean fronted, smooth made female that is setting up a nice square udder. Should be no guess work with her, a good cross of genetics here.

Owner: Crest View Land & Cattle



Cobra, sire of lot 21

22

CREST'S VIEW 72F

1291280 • Mar 4, 2018 • CSV 72F • PUREBRED • POLLED

BRED HEIFER

BW	WW	YW	CE	BW	WW	YW	MK	MCE
103	820		3.4	5.6	88.8	132.3	22.1	0.9

KUNTZ SUPER DUTY 4Y
OAKVIEW CENTERFIRE 139C
 KOP MS BENGIE 6P

TNT TANKER U263
CREST'S VIEW 14B
 CDP TARA

NCB RED SUSPECT 30S
 MISS R PLUS 7037T
 R PLUS 2169M
 KOP MS FREIGHTLINER 34M
 MR NLC SUPERIOR S6018
 TNT MISS S17
 LFE BRING DOWN THE HOUSE
 CREST'S-VIEW TARA 64K

AI bred to WFL Absolute 51Y on Apr.25/19. Preg tested safe.
 Here is a big, deep power house daughter of the Centerfire bull who is the hub of the performance end at our outfit. The Centerfire bull we cannot say enough about, they are all made with tons of rib, middle and length of body to them, cattle that just wanta grow! To add a touch of class, she has a little bit of black eyeliner and some lipstick on I'm sure she will turn some heads!

Owner: Crest View Land & Cattle



Centerfire, sire of lot 22

23

CRESTS FEBEE 100F

1271303 • Mar 3, 2018 • CVC 100F • PUREBRED • POLLED

BRED HEIFER

BW	WW	YW	CE	BW	WW	YW	MK	MCE
96	740		10.5	1.7	66.7	96.4	25.3	6.9

KWA FLYF RED MOUNTAIN 16Z
TSN MR RED MOUNTAIN 37C
 KWA MS 56Y 367A

WHEATLAND BULL 60X
ACS MS PIONEER 340A
 ACS SAVANNAH 137Y

IPU RED WESTERN 49X
 KWA MS ROCK 14X
 TESS RED 56Y
 DEEG MS RUBY 48X
 T178 HR
 WHEATLAND LADY 644S
 WHEATLAND RED TEDDY 457P
 HAAS RANCH G217

*AI bred to WFL Absolute 51Y on Apr.20/19. Preg tested safe to A.I.
 PE to DMJ MR 19F from Apr.22 – Jun.18.*

On the opposite end of the spectrum here is a heifer out of our calving ease specialist walking bull the TSN Mountain 37C bull. She is out of a hard working never miss cow we bought as a heifer at the Shades of the Prairies sale from the good people at Arrow Creek Simmentals. Febee is an extremely stylish, clean fronted, angular heifer with lots of middle, that walks out very well on a good correct set of feet and legs. Stacked pedigree of Red Mountain on the top side and the likes of Wheatland Red Teddy on the bottom the results will be concrete, a calving ease of ***! She is Preg tested safe to her AI date to Absolute, and was exposed to our new herdsire; a high selling blaze faced NCB Cobra son we bought this spring from The Johns family at Transon's Cattle Country Bull Sale. Owner: Crest View Ranch



Red Mountain, sire of lot 23

CROWE BROS.



BRENT CROWE & FAMILY
 GILBERT PLAINS, MB
 BRENT CELL 204-572-7109 | SCOTT CELL 204-648-4247
 CROWEBAR20@HOTMAIL.COM

Thanks to the Keystone Simmental Association for accepting us into this sale. Our two open heifers are off our bull battery that put some bull calves in the bull pen at home as well. We welcome you to our mixed family farm, one mile south of Gilbert Plains, MB anytime.

24 CROWE FLIRTIN FOR CERTAIN 6G

1284207 • Jan 4, 2019 • CROW 6G • PUREBRED • POLLED

OPEN HEIFER	BW	WW	YW	CE	BW	WW	YW	MK	MCE
	77			12.3	0.6	63.7	96.7	27.5	6.5

WFL ABSOLUTE 51Y
MRL PINNACLE 169E
 MRL MISS 5375C

LFE STRAIT UP 454W
 WFL MS BLACK FLASH 8068U
 MRL DISCOVERY 21A
 MRL MISS 715W

SVS CAPTAIN MORGAN 11Z
CROWE FLIRTIN FOR CERTAIN 42E
 RF FLIRTIN FOR CERTIN 37U

HARVIE JDF WALLBANGER111X
 SUNNYVALLEY BLK JENNA 88U
 LFE STREET LEGAL 510S
 TLG FLIRTIN WITH YOU

Here's a granddaughter of Rancier's great 37U cow. A cow family that needs no introduction. We purchased this heifer's dam as an embryo from March Madness as a donation lot from Ranciers to good friend, Logan Chalack and his young family as he battled cancer. What an offer and a great testament of the great breeders our industry has. This Captain Morgan two year old raised a good one in her first crack. Sired by our calving ease specialist, MRL Pinnacle 169E, Crow 6E is made right with a little extra substance. She is sure to make a cow and carry on the family tradition of flirtin with the best.



37U, grandam of lot 24

25 CROWE MS STYLE 31G

1284213 • Feb 15, 2019 • CROW 31G • PUREBRED • POLLED

OPEN HEIFER	BW	WW	YW	CE	BW	WW	YW	MK	MCE
	87			4.9	3.4	70.1	105.8	26.3	1.6

SPRINGCREEK LINER 104S
LRX BLACKHAWK 16D
 MUIRHEADS GEMSTONE 6Y

RCC/TCF LINE DRIVE M181
 SPRINGCREEK PHOEBE 64N
 TCF/RCC TEMPTATION GJ640
 3D BLK MISS GOOD 211S

CROWE MR GEMSTONE 41A
CROWE MS STYLE 28C
 LRX MS HUSTLER 151U

LRX MEAT 98X
 LRX MS RED 22W
 ACC1 HUSTLER 2N
 LRX BLK POWERLINE 18T

Another heifer sired by one of our walking bulls, this time LRX Blackhawk 16D. Unfortunately we lost Blackhawk last summer but we will continue to use him extensively in our ai and embryo programs. She's typical of the Blackhawk's, made stout in a nice moderate package. Her dam is a good uddered young cow that has a top bred in the heifer pen at home as well. She should go on to produce the good ones.



DOWNEY FARMS



ALLAN & JACQUIE, RYAN, KYLE, BEVERLEY-JEAN DOWNEY

COULTER, MB

H: 204-649-2260 RYAN: 204-522-0838 JACQUELINE/ALLAN: 204 761 8207

AJDOWNEY@XPLORNET.COM

Welcome to the 41st Annual Keystone Konnection Simmental Sale from the Downey crew. Firstly we would like to thank everyone who supported us last year, it's always greatly appreciated. As long time members we are thrilled to present these bred females. Our Broker daughter is the best we have offered yet, and the two Doomsday sisters are the definition of peas in a pod. All three simply are the kind of female we strive to raise. As always these heifers are bred to leading calving ease sires with no exposure. All have been parent verified as well as the homo polled and black test. As the year winds down again we'd like to wish you and your family a happy and healthy holiday season . Thank-you and all the best with your purchases and remember to mark your calendars for Tuesday, December 10th, and make sure to stop in Brandon!

26

DOWNEY MS 836F

1261827 • Jan 21/18 • DYAL 836F • HOMO BLACK • HOMO POLLED

BRED HEIFER	BW	WW	YW	CE	BW	WW	YW	MK	MCE
	90			6.3	3.1	64.2	93.1	27.6	4.8

- | | |
|--|--|
| <p>LFE GOTHAM 819Y
LFE DOOMSDAY 406K
LFE BS ULTRA GAL 127Y</p> <p>TH BLACK EDITION 8R
DOWNEY MISS 606X
MRL MISS 575U</p> | <p>LFE THE DARK NIGHT 350U
LFE BEST LADY 47W
LFE PUNK 407U
LFE BS ULTRA GAL 230U</p> <p>TNT DYNAMITE BLACK L137
BBN MS BLACK LADY 28H
MRL BLACK BEAR 79S
BCDO DUSTY'SDAZZLINDOLL6P</p> |
|--|--|

AI Bred to Mr CCF Vision on March 28/19 (No Exposure)
We love our DOOMSDAY females, and these two we are bringing we believe are gonna make you say the same. These two half sisters are hard to pick apart. They will show the uniformity of this sire group. Both are extremely long spine, big middled, eye appealing, and are setting up beautiful udders. This female reminds us a lot of the first DOOMSDAY daughter we sold last year to the prolific WLB program. Like the sisters last year, they'll make terrific mothers. Take note of her bloodline with the likes of TH BLACK EDITION and MRL BLACK BEAR, two of some of the best Simmental bulls in the breed ever. This beauty is definitely the cowboys type. Bred to VISION for an early January baby. Expect a quick ROI on this girl.



27

DOWNEY MS 881F

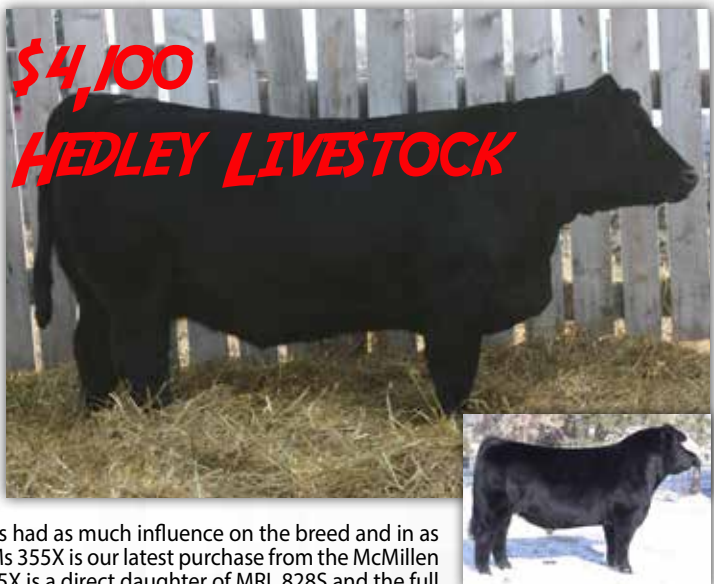
1283601 • Feb 20/18 • DYAL 881F • HETERO BLACK • HOMO POLLED

BRED HEIFER	BW	WW	YW	CE	BW	WW	YW	MK	MCE
	89			5	5.2	74.8	110.3	19.3	2.5

- | | |
|---|--|
| <p>SVF STEEL FORCE S701
MR HOC BROKER
JM BF H25</p> <p>MRL BLACK BEAR 79S
MRL MISS 355X
MRL MISS 828S</p> | <p>CNS DREAM ON L186
SVF SHEZA BEAUTY L901
G&L BLACKFOOT 716D
YC MISS BIK B80</p> <p>WHEATLAND BULL 131L
MRL MISS 302M
TNT DYNAMITE BLACK L137
MRL MISS 443N</p> |
|---|--|

AI Bred to OLF Odin U5 on March 16/19 (No Exposure)
**Downey Farms would like to reserve the right to one successful flush of this female at our expense and the buyers convenience.*

Keep your eyes on the prize. We are very proud and excited to be offering to the public DOWNEY MS 881F. We feel that this may be the best female we have offered to date, both in her perfect confirmation and in the bloodline. On the top side you have the popular and proven Mr HOC BROKER. No bull has had as much influence on the breed and in as many programs as he has and on the bottom side the bar is raised again. MRL Ms 355X is our latest purchase from the McMillen program and stems from their most proven and profitable cow family. MRL 355X is a direct daughter of MRL 828S and the full sister to MRL 836W the mother of influential bulls like EL TIGRE, CAPONE, SLEEP EASY and many many more. Go back farther you find the cows that built the MRL program; 443N (Mother of "HURRICANE" and much more) 824S (Mother of 'RED FORCE'); name one other cow family that has done so much. What makes DOWNEY MS 881F all the more cool is that no female has ever been sold publicly from this cow family before. Here is your chance to tap into this powerhouse family directly as this most likely is your one and only chance. An opportunity like this only comes once and a female like this, you don't see very often and especially one with the genetics like her. All we can say is if you are looking to invest into one of the best females to sell this year (or any year for that fact) then come to Brandon and lay your eyes on her. We think so highly of her, we would consider sharing ownership of this female if the buyer would like.



Broker, sire of lot 27

28

DOWNEY MS 870F

1261837 • Feb 12/18 • DYAL 870F • HOMO BLACK • HETERO POLLED

BW	WW	YW	CE	BW	WW	YW	MK	MCE
90			5.9	3.9	72.1	107.3	21.6	4.8

BRED HEIFER

LFE GOTHAM 819Y
LFE DOOMSDAY 406C
 LFE BS ULTRA GAL 127Y

JHSN BLACKOUT 55U
JONESYS MS BLACKOUT 25X
 JONESYS MS PREIMER BEEF

LFE THE DARK NIGHT 350U
 LFE BEST LADY 47W
 LFE PUNK 407U
 LFE BS ULTRA GAL 230U

PWK POWERHOUSE 77P
 MILESTONE FF ELLY 55R
 JONESY'S PREMIER BEEF 1P
 TBSF LINNEA 15L

All Bred to HTP SVF In Dew Time on Apr. 14/19 (No Exposure)

There are not going to be many heifers that will strike you like this girl will. DYAL 870F has been widely admired from a calf to this tank of a female she is now. What makes her though all the more intriguing is her mother.

This cow every year has raised an awesome heifer or bull calf that we kept or sold. Her last son sold to Glenn Whetter and his prized herd. Also she's extremely fertile; she had a terrific set of twin heifers this winter, raised them, and is due for January as always. Check out her breeding to In Dew Time for the end of January. You'll put a star beside this one.



JR SIMMENTALS



JIM RANSON CARBERRY, MB

H: 204-834-2401 | C: 204-476-0100
JRSIMMENTALS@GMAIL.COM

Welcome to the 40th Anniversary Sale. I bought my first Simmental in 1981 and sold 4 heifer calves that Fall in this sale. I've maybe missed consigning to this sale 2 or 3 times since then and even though I'm old as dirt I still enjoy bringing cattle, visiting with fellow consignors and seeing former and new buyers.

29

JFRS MS STYLE 46F

1254208 • Jan 28, 2018 • JFRS 46F • PUREBRED • POLLED

BW	WW	YW	CE	BW	WW	YW	MK	MCE
80	640		12.5	1	63.4	97	27.7	8.7

BRED HEIFER

LFE POKER FACE 399Z
LFE STYLE 363B
 LFE BS CHARO 127Z

KWA MOUNTAIN 28B
CREST'S VIEW 50D
 DHS MISS SURE SHOT 43B

DRAKE POKER FACE 2X
 LFE BS KATARINA 146X
 LFE PUNK 407U
 KLC MISS RIGHT MOVE 307N

KWA FLYF RED MOUNTAIN 16Z
 WINDMILL MS TANK 4W
 GLS/JS SURE SHOT Y18
 CREST'S VIEW 16Z

All bred to WFL Absolute 51Y on April 11/19. No exposure.

A medium framed, nicely made heifer with a nice udder coming along. Her dam is also moderate in frame but a tank in her make up. She also has an excellent udder. 46F has a great set of numbers and is bred to the calving ease bull, Absolute.



Style 363B, sire of lot xx

16

KEYSTONE KONNECTION

30 CMS STARDUST 849F

1246894 • Feb 27/18 • CMS 849F • PUREBRED • POLLED

BW	WW	YW	CE	BW	WW	YW	MK	MCE
87	688		4.1	4.3	80.6	114	21.3	0.7

BRED HEIFER

ZSL MR RED MANDAKO 49B
RENDEZVOUS MANDAKO 124D
 RENDEZVOUS KENDRA 124A

MAF R HORIZON 7Y
CMS SUNDANCE 310A
 JFRS MS 50W

LRX THE GODFATHER 141Z
 ZSL MISS STEELER 104Y
 NUG TRIGGER 263Y
 RENDEZVOUS 630W

LFE BS LEWIS 322U
 LFE KJLI DREAMLADY 79W
 TNT TOP GUN R244
 JFRS MS RED LABEL 15S

AI bred to STF Crimson Tide on Apr. 5/19.

Exposed to DK Cypress 48E from May 3-June 5, 2019. Safe to exposure.

This heifer is moderate and stout with a nice udder developing as expected in Sundance daughters. Her sire, Rendezvous Mandako, was their high selling red bull in their 2016 bull sale. His daughters are fantastic. They are high volume females with that brood cow look. Her service sire, DK Cypress, is a son of the Muirhead Identity bull and his dam is a big volume cow with a great udder. Cypress is homo polled and has awesome foot structure.



Cypress 48E, service sire of lot 30

31 JFRS RIANNA 47G

1288669 • Feb 11, 2019 • JFRS 47G • PUREBRED • POLLED

BW	WW	YW	CE	BW	WW	YW	MK	MCE
86	710		4.4	5.3	89.4	124.5	18.7	5.2

OPEN HEIFER

TNT BOOTLEGGER Z268
MRL RED WHISKEY 101B
 MRL MISS 677Y

MAF R HORIZON 7Y
CMS SUNDANCE 310A
 JFRS MS 50W

DCR MR MOON SHINE X102
 TNT MISS W70
 KOP CROSBY 137W
 MRL MISS 355T

LFE BS LEWIS 322U
 LFE KJLI DREAMLADY 79W
 TNT TOP GUN R244
 JFRS MS RED LABEL 15S

47G is an embryo calf out of the Sundance cow that I co-own with Czech-Mate Simmentals. 47G is deep ribbed, thick and looks like she will have that great udder that all of the Sundance daughters have had. 47G's flushmate sold in Agribition 2018 for \$8500. 47G's maternal sister CMS 849F is also one of my bred consignments. An opportunity to buy 2 of Sundance's daughters!



CMS 834F, flushmate of lot 31

Thank You!

**TO ALL WHO SUPPORTED
 OUR SALE LAST YEAR!**

JP CATTLE CO.



GLENN & BARRY LOWES & FAMILIES, ERIC & MELISSA PATEMAN & FAMILY
MCAULEY, MB
GLENN - 204-851-5669 | BARRY - 204-851-0342 | ERIC- 306-434-8567
BROOKECANART@GMAIL.COM



Welcome to the Keystone Connections Sale. We are very happy to be able to participate in the 2019 version. When Matt came to visit this summer, we decided to let him pick a couple of our very best heifers. We are sure whomever takes them home, they will produce well for them. Thank you

32

JPCC LINETTE 8F

1251661 • Jan 8, 2018 • JLP 8F • HOMO BLACK • HOMO POLLED

BW	WW	YW	CE	BW	WW	YW	MK	MCE
96			5.7	3.9	72.1	109	25.6	3.3

BRED HEIFER

STF ROYAL AFFAIR Z44M
WHEATLAND ROYAL FLUSH 435
 WHEATLAND LADY 220Z

SPRINGCREEK LINER 104S
BLACKSAND LINETTE 834U
 SPRINGCREEK ROSE 21R

REMINGTON LOCK N LOAD 54U
 STF ONYX 451W
 WHEATLAND PROTOCOL 83X
 WHEATLAND LADY 736 T

RCC/TCF LINE DRIVE M181
 SPRINGCREEK PHOEBE 64N
 SRS BLACK ATTACK L1079
 SPRINGCREEK DELLA 31F

AI bred to to Six Mile Desert Storm 94D on Apr. 11/19.
PE to Six Mile Cache Creek 804E from Apr 30 - June 11, 2019.
 We purchased the mother of this heifer as the lead-off cow in the historical Blacksand Sale. We have flushed 834U heavily over the past few years, and she has given us many good offspring. Combine her with the sire, Wheatland Royal Flush, the 2016 agribition Champion mature bull, you could well have a donor quality female. She's stout, deep, very feminine and will have a perfect udder.



Linette, dam of lot xx



Royal Flush 435, sire of lot xx

33

JPCC SHEILA 76F

1251732 • Jan 19, 2018 • JLP 76F • PUREBRED • HOMO POLLED

BW	WW	YW	CE	BW	WW	YW	MK	MCE
104			4.8	4.1	75.3	111.9	20.3	1.9

BRED HEIFER

STF ROYAL AFFAIR Z44M
WHEATLAND ROYAL FLUSH 435
 WHEATLAND LADY 220Z

LFE THE DARK NIGHT 350U
LFE BS SHEILA 82A
 LFE BS SHEILA 136T

REMINGTON LOCK N LOAD 54U
 STF ONYX 451W
 WHEATLAND PROTOCOL 83X
 WHEATLAND LADY 736 T

R PLUS BLACKEDGE
 LFE BS MS LEWIS 646R
 LFE MR LEWIS 462P
 LFE SHEILA 110K

AI bred on April 21 to R Plus 5015C.
PE to Six Mile Cache Creek 804E from April 30 - June 11, 2019.
 After LFE Shiela 82A was declared grand champion female in the 2015 Agribition show, we were very fortunate to purchase a flush off of her. We mated her to our 2016 Grand Champion Bull Royal Flush. It's very rare that a bred heifer would be available with champions of this stature. We would never have considered selling one of these heifers, but we have 5 more at home. All that being said we have a very attractive female here. Good footed, lots of depth and thickness great hair coat and she is setting up a very nice udder. The Royal Flush heifers have perfect udders.



Sheila 82A, dam of lot xx

LONE STAR SIMMENTALS

FLETCHER FAMILY

MELITA, MB

NICK - 204-264-0431 | TREVOR - 204-264-1495

KELSEY - 431-727-0198

LONESTARSIMMENTALS@GMAIL.COM

Welcome to the 41st Keystone Konection sale, We are very excited to be consigning to this great sale for the second time. We have brought two great open heifers for your consideration. If you have any questions please feel free to call or text us anytime. See you on sale day!



34 LONE STAR NIGHT DREAM 110G

1282930 • Feb 6, 2019 • CNF 110G • PUREBRED • POLLED

BW	WW	YW	CE	BW 2	WW	YW	MK	MCE
82			9.4		67	102.5	23.5	5.4

OPEN HEIFER

WHEATLAND BULL 786T
MAPLE LAKE PUBLICITY 443B
 ACS MS WILLAMENA 9761W

WHEATLAND BULL 131L
 WHEATLAND LADY 351N
 REMINGTON ON TARGET 2S
 HAAS RANCH G217

WHEATLAND RED TEDDY 457P
ACS NIGHT DREAM 4D
 HPF MS NIGHT DREAM M22

WHEATLAND BULL 131L
 WHEATLAND LADY 902J
 KENCO/MF POWERLINE 204L
 LBR NIGHT DREAM M22

Night Dream has been a leader in the heifer pen all year. She has a smooth feminine look with lots of power. She is sired by Maple Lake Publicity 443B and he has put his stamp on her with beautiful jet black hair big top and smooth from front to back. Night Dreams dam ACS Night Dream 4D has everything we look in for a cow; good feet, feminine front end with loads of power through the middle and back end, and a good level udder. We are very confident that Night Deam 110G will be a great addition to anyone's herd.



35 LONE STAR EMMA 132G

1291535 • Mar 1, 2019 • CNF 132G • PUREBRED • POLLED

BW	WW	YW	CE	BW	WW	YW	MK	MCE
96			4.3	4.1	69.7	98.6	19.7	1.4

OPEN HEIFER

MRL PRETTY RECKLESS 68B
MRL 241D
 NUG UNIQUE 11Z

MRL EL TIGRE 52Z
 MRL MISS 310X
 MRL RED FORCE 12U
 NUG MISS 83X

WHEATLAND HIGHVOLTAGE122Y
MAPLE LAKE 5026
 WXR REDPATHS OMENSON 26Z

WHEATLAND PREDATOR 922W
 WHEATLAND LADY 736 T
 TH RED OMEN 40P
 WINDMILL MS GALAXY 18T

Emma is a stout female with a touch of feminine in her front. With having Pretty Reckless and Wheatland HighVoltage 122Y in her background you can be sure this female will be a great producer. She is on track to look like her mother and she will be an easy keeper just like her mom always in great shape. She will not be one to miss on sale day!



MAPLE LAKE STOCK FARMS



**GERRY & LINDA BERTHOLET, ANDREA BERTHOLET
HARTNEY, MB**
H: 204-858-2086 | GERRY: 204-741-0340 | ANDREA: 204-483-0319
GLBERTHOLET@HOTMAIL.COM

Welcome to the Keystone Konnection. We are happy to be here again, show casing with this great group of producers. Building females from the bottom up, has worked very well for us. These two females are a good example. Thank you to Darryl Snider for evaluating our females and selecting his top choices.

36 MAPLE LAKE BLUE PRINT 8450

1255783 • Jan 24/18 • ML 8450F • 1/2 • POLLED

BRED HEIFER	BW 87	WW 811	YW	CE 13.4	BW 1.1	WW 64.6	YW 98.9	MK 30.8	MCE 7.3
-------------	----------	-----------	----	------------	--------	------------	------------	------------	------------

ANCHOR "T" RUSTY 59G
STARWEST POL BLUEPRINT
 PHS HOMOZYGOUS XCEPTIONAL

KLONDIKE GOLD RUSH 418B
 ANCHOR "T" HELGA 10Y
 CHAMPS BRAVO
 WCC WELLS' PLD TALULAH 7T

SOO LINE MOTIVE 9016
MAPLE LAKE 6450D
 MAPLE LAKE 4450B

HF KODIAK 5R
 TLA BEAUTY 5R
 SAV HERITAGE 6295
 IU 1098

AI bred to IPU Bentley 81F on April 4, 2019. No exposure

Darryl Snider selected this outstanding heifer out of our bred heifer pen of 130 head. This is a female I should not be letting go, but I gave Darryl his choice and hoped he would not pick her. LOL. She is a Star west Blue Print; out of our Angus dam MLSF 6450D, a Soo Line Motive. The grand dam is MLSF 4450B a SAV Heritage from our top donor Angus, IU 1098Y. We have approximately 60 females from her. This is best of our Angus genetics. ML 8450F has the sweet heart look of an Angus, with a whole lot of added punch. She is mated with an exciting sire; IPU Bentley 81F, Labatte Simmentals high seller \$94,000 to Jay Dawn Farms.



Bentley 81F, service sire of lot 36 Motive, mat. grandsire of lot 36

37 MAPLE LAKE SHELL SHOCKED 9612

1273605 • Feb 5, 2019 • ML 9612G • PUREBRED • POLLED

OPEN HEIFER	BW 83	WW 680	YW	CE 14.4	BW 1	WW 61	YW 85.1	MK 15.6	MCE 6.7
-------------	----------	-----------	----	------------	------	----------	------------	------------	------------

REMINGTONSECRETWEAPON185X
SSC SHELL SHOCKED 44B
 LAZY H SHEZ TOO COOL W58

GWS EBONYS TRADEMARK 6N
 AUBREYS BLACKBLAZE II 5T
 CNS DREAM ON L186
 SS/REW TOO COOL S365

WHEATLAND SWAGGER 343A
MAPLE LAKE SWAGGER 6612
 MAPLE LAKE MS BOMBER 0312

WHEATLAND PREDATOR 922W
 WHEATLAND LADY 721 T
 WHEATLAND BULL 786T
 ANGUS/ANGUS

This heifer is sired by SSC Shell Shocked, a new pedigree for us. He is a very showy, baldy sire, of strong genetics. The dam, ML 6612D is an eye catching female, with powerful depth and hip. ML 6612D is a granddaughter of our esteemed sire, LER 786T and sired by LER 343A Swagger. These genetics consistently have the desirable extra powerful muscle development and great udders. We have many females that are working very well into their 10 year. ML 9612G would make a front line prospect show heifer.



Shell Shocked, sire of lot 37 Swagger 6612, dam of lot 37

MCMANUS SIMMENTALS



BOYD MCMANUS & FAMILY
MINNEDOSA, MB
C: 204-868-0923 | H: 204-867-5860
MCMANUSCOW@GMAIL.COM

Welcome to the 2019 edition of the Keystone Konnection sale! A big thanks goes out to all the bidders and buyers at last years sale! What a year it has been, long long cold winter that turned into a cold damp spring then summer hit with no rain and we all know what September was like and October even worse! This year i'm bringing three bred hfr's all bred to JNR Shade. If any questions or would like to tour the herd don't hesitate to contact me!

38 MCM MISS FARRAH FF 10F

1240169 • Jan 9, 2018 • MCM 10F • FULL FLECKVIEH • HORNED

BRED HEIFER

BW	WW	YW	CE	BW	WW	YW	MK	MCE
93	722		1.6	4.5	72.7	109.7	33	0.5

BLACK GOLD EPIC 14Z
ANCHOR D HIGH NOON 247B
 ANCHOR D MARTINI 247X

ALLM COLOSSAL 25U
 CROSSROAD WHISPER 930W
 SOUTH SEVEN RAZZMATAZZ 7R
 ANCHOR D CHER 100S

BAR 5 SA MALO 419T
BAR 5 BERTA DA ZURITA
 BAR 5 SA ELKE 453P

KYKSO MIJU
 ELDANDI GEZMI
 LATCO GOLD II
 TOVERBERG ELSA

Pasture Exposed to JNR Shade from Mar 23-July 1, 2019.
 PT safe early January.

What can I say about Farrah, other than she is awesome! This female comes from a very strong full South African cow that never misses a beat. Farrah is full of performance and should milk like crazy just like all the Highnoon females do! If your looking to ad a little different pedigree to your herd this girl defentily is the one since her grandsire Malo only had a couple of daughters in Canada. Bid with confidence since she is the only Highnoon female for sale this year and she is darn good!!



\$6,500
SILVER LAKE
SIMMENTALS



Shade, service sire of lots 38-40

39 MCM MISS PERCISION 21F

1290945 • Jan 26, 2018 • MCM 21F • FULL FLECKVIEH • HORNED

BRED HEIFER

BW	WW	YW	CE	BW	WW	YW	MK	MCE
78			11.8	2.4	65	98.1	38.6	7.4

VIRGINIA RADISON 5Z
VIRGINIA PRECISION 16C
 BROCK YODA

CROSSROAD RADIUM 789U
 SS LEGACY 5U FF
 ANCHOR "T" METRO 4E
 BRK PLAY MATE

ANCHOR D MAZOROTTI 19B
ANCHOR D GARREN'S DAVINA 469D
 GARREN'S ISABELLE 29B

BLACK GOLD EPIC 14Z
 ANCHOR D UNIQUE 19U
 VIRGINIA MAXIMUS
 GARREN'S TARA 21X

Pasture Exposed to JNR Shade from Mar 23-July 1, 2019.
 PT safe early January.

Dark red, doubled goggled with a great disposition. 21F is out of a heifer I purchased at the Anchor D Ranch sale a couple years back from Garren Skeels. Her dam Davina was one of the top sellers that fall and I tell you she hasn't dissappointed me at all, just ask Dan what he thinks of Davina.. 21F sire needs no introduction at all and is becoming one of the top "dogs" at Anchor D Ranch. Take a good look at her pedigree and you can pretty much tell what she will be capable of!



\$3,250
JEREMY POYSER

40**MCM MISS MEISHA 26F**

1290946 • Feb 13, 2018 • MCM 26F • FULLBLOOD • HORNED

BW	WW	YW	CE	BW	WW	YW	MK	MCE
81			7.4	2.4	65.3	89.9	34.8	6.8

BRED HEIFER

CHAMPS BRAVO

STL BRAVO 34C

BAR KR MS EXPRESS FF 79A

SIBELLE CODA 17A

TRIPLE T MEISHA 46D

BIG SKY AMASA 33A

CHAMPS ROMANO

VIRGINIA POLL BARBI SUE
CROSSROAD RADIUM 789U
BLACK CHERRY TIMELESS 41T

VIRGINIA WALKER 97W

SIBELLE ANNA 22W
GREAT GUNS REGIO 9R
BIG SKY HEBA 40U*Pasture Exposed to JNR Shade from Mar 23-July 1, 2019.**PT safe early January.*

26F is a well balanced female that just has that look to her. She is out of a heifer I purchased from Tripple T Diamond Simmentals. Meisha stands on a good set of feet and is developing a picture perfect udder just like her dam! Meisha has some very strong blood in her and I can see her being a front pasture female in pretty much any herd.

**LAWNVIEW SIMMENTALS****ALLAN AND DEANNE LAWN & FAMILY**

HAMIOTA, MB

H: 204-764-2150 | C: 204-764-0399

ADLAWN@MTS.NET

We are pleased to be a part of the 2019 edition of the Keystone Connection Sale and are looking forward to working with a very reputable group of breeders. Lawnview Simmentals continues to gradually increase our Simmental herd with goals of not only adding to our own herd but also offering sale animals with strong genetics for both the commercial and purebred producers. Our children have been active members of the McConnell 4-H beef club and enjoy showcasing their animals when time allows. Having graduated in 2019 son Brendan is giving his total attention to the farm and daughter Chelsea helps out when time allows. Please feel free to call us at any time as we would be more than happy to discuss our program with you. We look forward to seeing you on sale day.

41**LVS MISS FAKE ID 10F**

1252942 • Jan 27, 2018 • ADL 10F • PUREBRED • POLLED

BW	WW	YW	CE	BW	WW	YW	MK	MCE
86			5.1	3.7	66.5	92.1	22.2	0

BRED HEIFER

LFE BS LEWIS 322U

TRI-R AMMUNITION 4A

TRI-R MS BLACK VELVET 20Y

IPU BLACK LABEL 156S

LVS YARDLEY 4Y

BDS MISS BLACK DIAMOND 4S

R PLUS BLACKEDGE

LFE BS MS ARNOLD 135S

R PLUS BLACKOUT

MRL MISS 552U

REMINGTON RED LABEL HR

IPU MS BEEF 77M

LFE BOMBSHELL 508N

MISS DIAMOND 401P

AI bred to Mr CCF Vision on April 11/19. No exposure

After an incredibly trying 2019 that saw an exceptionally cold winter, followed by a hot dry summer that lead into a wet fall and an October snowstorm we are looking forward to sale time and bringing a strong bred female for you to check out. We feel that LVS MISS FAKE ID 10F is truly an exceptional female.

She puts it all together into one very attractive package. 10F is incredibly well balanced, thick topped and structurally sound. She has been a standout since day one and will be a female that will produce the right kind for many years to come. Her sire, TRI-R Ammunition, is a tremendous calving ease sire that puts his stamp on his offspring. Added to her genetics is the fact that she is bred safe to AI date of April 11 to the popular Vision sire that also combines calving ease with performance. No exposure. If you're in the market for a flawless female backed by the genetics of some of the breed's best then LVS MISS FAKE ID is for you.



Vision, service sire of lot 41

22**KEYSTONE KONNECTION**

MCINTOSH RANCH



KOLTON AND NIKODA MCINTOSH & FAMILY
ERIKSDALE, MB
C: 204-280-0359
MCINTOSHRANCH01@GMAIL.COM



We would like to start off by thanking the Keystone Association for welcoming us to contribute to this reputable sale of 41 years.

On behalf of McIntosh Ranch, I would like to welcome you to the 41st annual Keystone Konnection Sale. We are pleased to be working with the BMS crew. McIntosh Ranch is located north of Winnipeg in the Interlake region at the town of Eriksdale. We currently run 60 purebred and commercial Simmental cows and we sell all our bulls privately off the yard. We are very excited to be a part of this sale and look forward to visiting with everyone sale day. We hope the weather cooperates and everyone has safe travels. See you sale day

42 MRK HEAVEN SENT 1G

1286582 • Jan 1, 2019 • MRK 1G • PUREBRED • POLLED

OPEN HEIFER	BW	WW	YW	CE	BW	WW	YW	MK	MCE
	65	650		9.6	2.5	62.3	88.1	19.4	4

WS PILGRIM H182U
CCLT ALLIANCE 91C
 BROOKS SHINIA 1A

LFE BS LEWIS 397C
MRK HEAVEN SENT 17E
 LFE BS HEAVEN SENT 99C

CNS DREAM ON L186
 WS MARLA 276M
 BB BARACK 1017T
 BROOKS RED HOT Y17

LFE BOUNTY 3118Z
 LFE BISS JUST PEACHY 634Z
 LFE RICH RAY 369Z
 LFE HEAVEN SENT 30X

SHOW HEIFER ALERT! MRK 1G has the look. She has been a head turner since day one. Square hipped, picture perfect on the profile and super correct. Going back to the legendary LFE Heaven Sent 30X cow, whose daughters have been high sellers in many Lewis farms leading ladies sales. MRK 1G would make a tremendous 4H project for any junior or to anyone wanting to have some fun chasing banners.



LFE 30X, great granddam of lot 42

43 MRK LUCY 29G

1290228 • Feb 14, 2019 • MRK 29G • PUREBRED • POLLED

OPEN HEIFER	BW	WW	YW	CE	BW	WW	YW	MK	MCE
	95	775		8	2.5	72.3	107.2	18.2	4

SVF STEEL FORCE S701
MR HOC BROKER
 JM BF H25

HARVIE JDF WALLBANGER111X
LRX MS BLACK 91A
 IPU MS. LINER 56U 266Y

CNS DREAM ON L186
 SVF SHEZA BEAUTY L901
 G&L BLACKFOOT 716D
 YC MISS BIK B80

SHS ENTICER P1B
 JDF PEPSI 61U
 SPRINGCREEK LINER 56U
 IPU MS RANCH HAND 74U

Who doesn't love a baldy face. MRK 29G is a mating that we think very high of. Sired by the cow maker Hoc Broker and out of LRX 91A (Lucy). 91A is a direct Harvie Wallbanger daughter out of a Spring Creek Liner 56U Cow. 91A has been the genetic piece to lots of our high sellers in the past, with sons being sold to well respected breeders in the business and attractive females becoming crowd favourites and high sellers. Come down Sale day and check 29G out for yourself. She's sure to impress.



91A, dam of lot 43

MORE BROS. SIMMENTALS



EVERETT MORE AND IRENE VANIN
VIRDEN, MB
C: 204-851-1737
EMSIM1946@GMAIL.COM

Our 1st half blood Simmentals were registered in 1972 – mothered by our father Mel's purebred Hereford cows. This is our 21st year as a member of the Keystone Simmental Association and we enjoy being part of this great group. Our herd is on a comprehensive herd health program and our consignments have received both their initial and booster Scourbos vaccinations. The service sires to our sale heifers are at the top of the breed for calving ease EPDs.

If calving in January is not part of your program, we are willing to make arrangements with you to take any of our consignments home and calve them out for you.

44 MORE'S MS FAITH 804F

1255288 • Jan 17/18 • MEM 804F • PUREBRED • HOMO POLLED

BRED HEIFER	BW	WW	YW	CE	BW	WW	YW	MK	MCE
	96	880	1165	4.9	3.6	63.5	99	20.1	2.1

REMINGTON LOCK N LOAD 54U
STF ROYAL AFFAIR Z44M
 STF ONYX 451W

3D BLK FULL THROTTLE 483X
LFE BS HEAVEN SENT 89A
 LFE HEAVEN SENT 30X

REMINGTON ON TARGET 2S
 BAR 15 MISS KNIGHT78E-51G
 STF DOMINANCE T171
 GCF MISS CALIENTE

WHEATLAND BULL 680S
 CROSSROAD RAMONA 375R
 LFEBS BLACKADVANCE 426U
 LFE BS MISS LEWIS 614S

AI Bred to WFL Absolute 51Y on April 22/19. Due Feb 2, 2020.

Homo polled embryo heifer. An extremely easy keeping heifer exhibiting the best attributes of both parents. She is big ribbed and deep bodied with a very sound structure. She shows every indication of being a herd bull producer.



Heaven Sent, dam of lot 44

Royal Affair, sire of lot 44

45 MORE'S MS FANTASIA 814F

1255213 • Jan 28, 2018 • MEM 814F • PUREBRED • POLLED

BRED HEIFER	BW	WW	YW	CE	BW	WW	YW	MK	MCE
	75	755	990	11.1	0.7	62.7	88.4	37.6	3.6

HSF HIGH ROLLER 12T
WS HIGH STAKES W115
 WS MISS DOLLY T10

SOUTH SEVEN TOPNOTCH 29T
MORE'S MS DOMINIQUE
 MFI FLORA 8121

TJ 57J THE GAMBLER
 HSF RED FORTUNES SIS 33
 LBR CROCKET R81
 WS MISS REAL DEAL P88

SOUTH SEVEN RAZZMATAZZ 7R
 SOUTH SEVEN KELTIE 2K
 PRL PORTERHOUSE REGENT
 MFI FLORA 3002

AI Bred to WFL Absolute 51Y on April 15/19. Due Jan. 26, 2020

Purebred polled half Fleckvieh out of a 2 yr old heifer. Typical of the High Stakes offspring, she is a moderate framed, structurally correct heifer. Her good uddered dam comes from a cow family who was dubbed "the hardest working" in the Murray Farms Dispersal Catalogue. A full brother and two maternal brothers to 814F's dam have been part of our bull sale consignments in the past.



High Stakes, sire of lot 45

46**MORE'S MS FELICITY 821F**

1255219 • Feb 14, 2018 • MEM 821F • PUREBRED • POLLED

BW	WW	YW	CE	BW	WW	YW	MK	MCE
90	770	970	13.9	0.4	49.9	62.2	36.7	10.3

BRED HEIFER

KOP CROSBY 137W

MRL 91Y

MRL MISS 493U

CROSSROAD TUXEDO 222T

CHERRY CREEK KORA 12X

DOUBLE BAR D SANDY 26L

MUIRHEAD LIVE WIRE 95R
KOP MS BENGIE 6P
HOOKS SHEAR FORCE 38K
MRL MISS 952SDOUBLE BAR D EVEREST 4R
MISS ARNOLD K5934
BAR NONE MAXIMIZER
RICHMOND MISS ZUMUTO 40F*AI Bred to WS High Stakes W115 on April 13/19. Due Jan 24, 2020.*

Purebred double polled half Fleckvieh heifer, with a very maternal pedigree. MRL Destination 91Y daughters have been great producers for McMillens and in our herd. A maternal sister to 821F sold thru this sale to Storbo Farms, and a maternal brother was selected by Routledge Stock Farm. A full brother is a herd bull in the Clarke commercial herd at Hartney where they really like his calves.



MRL 91Y, sire of lot 46

MAR MAC FARMS**BLAIR, LOIS, BRETT AND MELISSA MCRAE****BRANDON, MB****H: 204-728-3058 | BLAIR: 204-729-5439 | LOIS: 204-573-5192 | MELISSA: 204-573-9903****WWW.MARMACFARMS.NET****MARMACFARMS1@GMAIL.COM**

Welcome to the 41st annual Keystone Konnection Simmental Sale. Mar Mac is proud to have consigned for 40 years and 2019 marks Mar Mac's 43rd year as members of the Canadian Simmental Association. The Keystone Simmental group is an amazing group of breeders who work hard to present a top group of productive females for you along with the great Simmental fellowship.

Mar Mac consists of 250 Simmental, Red Angus and Black Angus females and we host our annual bull sale March 11, 2020 on the farm.

A Black bred that will be a strong addition to any program. See you at the Sale.

47**MAR MAC GR OLLIE 142F**

1241253 • Mar 4/18 • KOB 142F • HOMO BLACK • HOMO POLLED

BW	WW	YW	CE	BW	WW	YW	MK	MCE
88	570		8.8	3.6	70.7	106.8	26.4	6.1

BRED HEIFER

REMINGTON LOCK N LOAD 54U

W/C LOADED UP 1119Y

AUBREYS BLACK BLAZE III

RKTS ALLIANCE 2Y

CDP OLLIE

CDP OLGA 5A

REMINGTON ON TARGET 2S
BAR 15 MISS KNIGHT78E-51G
3C MACHO M450 BZ
BLAZE IV 1PSHS ENTICER P1B
MADER P RAIN MAKER 28W
BROKEN OAK BLACK RUSSIAN
CDP BLACK AND FANCY*AI bred to Wheatland Front Runner 896F on April 17/19. No Exposure*

This Black female is full of natural thickness, muscle, excellent hair coat and femininity all in one. She is sure to be one to check out sale day. Her dam came from the Keystone Konnection Sale from Pizzey Simmentals. She sells bred April 17 (Preg tested to this date no exposure) to the new herd sire Wheatland Front Runner 896F - who sold to Downhill Simmentals for \$35,000. Fronrunner is the homo polled CCLT Alliance 91C son. We purchased a semen package from Everett on this new exciting calving ease sire. A unique opportunity from this broody female.



Front Runner, service sire of lot 47

NORTHERN LIGHT SIMMENTALS



NEIL, DENISE, CODY & CARLY JO CARSON
 ROSSBURN, MB
 H: 204-859-2816 | C: 204-773-6927
 NEILCARSON1973@GMAIL.COM

Welcome to the 41st annual keystone konnaction sale. We have two heifer calves on offer. All three would make excellent 4-H projects as they come to you halter broke. If you have any questions please do not hesitate to call.

48 NAC ZOEY 22G

1285608 • Jan 5, 2019 • NAC 22G • PUREBRED • POLLED

OPEN HEIFER	BW	WW	YW	CE	BW	WW	YW	MK	MCE
	90			9.3	3.1	66.1	97.2	24.8	5.5

FBF1/SF IGNITION
X-T DOC HOLIDAY 16D
 NUG TAMARA 32Z

FBF1 COMBUSTIBLE
 FBF1 GORGEOUS LADY
 MR NLC SUPERIOR S6018
 NUG BARBIE 941W

SPRINGCREEK RASHAD 12W
NAC 40Z
 NAC 88U

TNT KNOCK OUT R206
 SPRINGCREEK LINNE 49R
 MJ RED ROCK 49M
 NAC REO 1R

A very long-bodied, straight topped heifer with a lot of substance. Her dam comes from a cow family with a lot of performance. 22G was a part of our show string placing first in class at Ag-Ex and will be shown at Agribition. Her sire, Doc Holiday, is working extremely well at our place by providing calving-ease and makes super attractive females!



49 NAC ALLY 29G

1285376 • Jan 7, 2019 • NAC 29G • PUREBRED • POLLED

OPEN HEIFER	BW	WW	YW	CE	BW	WW	YW	MK	MCE
	86			8.5	2.6	72.6	108.3	22.6	6.3

NCB COBRA 47Y
BOUNDARY WYATT EARP 89D
 BOUNDARY ABRICOT 5B

LFE VIPER 455U
 NCB MISS DREAM 22T
 LFE BS LEWIS 322U
 KIMLAKE ABRICOT 511R

3D TRUSTIN 47T
NAC 57B
 XPP JOHN'S DEVRA

KENCO/MF POWERLINE 204L
 X-T MISS DESTINY 73K
 D BAR C KNIGHT 088K
 BOYNECREST MISS DASH 51K

A daughter of Boundary Wyatt Earp that is very deep sided with a ton of hair. The dam goes back to one of the best cow families we have. 29G will be a moderate framed, easy-keeping cow and should have a great udder.



RAINBOW RIVER SIMMENTALS



DUSTIN & JENNILEE STEWART

FISHER BRANCH, MB

H: 204-372-6031 | C: 204-761-6644

RAINBOWRIVERSIMMENTALS@GMAIL.COM | WWW.RAINBOWRIVERSIMMENTALS.COM

Welcome to the 41st edition of the Keystone Konection Simmental Sale! Dustin and I are happy to be back again this year as we always enjoy our time at this sale. We're consigning three strong open heifers, two of which come to you out of our ET program. As always, these heifers have been on a total herd health program since birth and are up-to-date with their vaccines and parasite control. If you have any questions about our offering, don't hesitate to contact me. Please check out our website for videos of the sale heifers, as well as more support photos of their cow families and siblings. Thanks for your interest in our program!

50

RAINBOWRIVER LADY 39G

1285791 • Jan 26/19 • JNB 39G • HOMO BLACK • HOMO POLLED

OPEN HEIFER

BW	WW	YW	CE	BW	WW	YW	MK	MCE
107	710		4.8	3.6	78.1	115.5	25.9	3.5

LFE MCDAVID 413C

SPRINGCREEK DENALI 21E

SPRINGCREEK LIMA 69Y

NCB COBRA 47Y

ERIXON LADY 92D

ERIXON LADY 68B

LFE GOTHAM 819Y

LFE HEAVEN SENT 30X

SPRINGCREEK LINER 56U

SPRINGCREEK DREAM 34S

LFE VIPER 455U

NCB MISS DREAM 22T

HARVIE JDF WALLBANGER111X

EDN NIKA 37N

This is the first daughter from our \$23,000 donor, Erixon Lady 92D, who was a lead off and high selling bred at Simmsational 2017. 92D's cow family is packed with show winners, high sellers and productive females, and we believe 92D is destined for great things. 39G is also one of the very first daughters to sell from the highly exclusive, \$46,000 Denali who has consistently put his stamp on his first calf crop. Analyze the depth of influential sires and donors through her pedigree, and you realize that 39G's quality is no accident. Pretty headed and great haired, she offers extra extension and femininity from end to end, yet is a performance female that is powerful and dimensional in her design. Her adequate bone size and good, large foot are an added bonus. There's no denying, this Lady is special!



Denali, sire of lot 50



Lady 92D, dam of lot 50

51

RAINBOWRIVER CINDERELLA 48G

1285801 • Jan 28, 2019 • JNB 48G • PUREBRED • HOMO POLLED

OPEN HEIFER

BW	WW	YW	CE	BW	WW	YW	MK	MCE
101	668		8.3	4.6	87.7	138.1	21.4	6

KWA FLYF RED MOUNTAIN 16Z

HARVIE RED SUMMIT 54B

HARVIE DAKOTA ROSE 11Z

TNT TOP GUN R244

ACOMBS MS DREAMER 760E

ACOMBS CINDERELLA 345A

IPU RED WESTERN 49X

KWA MS ROCK 14X

HARVIE JDF WALLBANGER111X

WS DAKOTA ROSE M86

TNT GUNNER N208

TNT MISS SADIE M68

LBR CROCKET R81

ACOMBS MS RUSTY RED 310N

48G is one of my favourite red heifers born this year. She's got the look of an easy keeping female being so soft made and deep in her middle third. She's feminine through her front, yet thick hipped, wide topped and bold over her ribs. 760E did a rip of a job raising her first calf, leading 48G to an adj WW of 731 lbs which ranked her third at weaning out of 20 contemporaries. There's good performance in this heifer, plus lots of maternal greatness injected through both sides of her pedigree.



Red Summit 54B, sire of lot 51

52

RAINBOWRIVER MS BLACKIE 62G

1285817 • Feb 5/19 • JNB 62G • HOMO BLACK • HOMO POLLED

	BW	WW	YW	CE	BW	WW	YW	MK	MCE
OPEN HEIFER	93	696		8.2	3.5	77.3	109.6	17	4.8



MR NLC UPGRADE U8676
MR CCF VISION
 GCF MISS ELSA

LFE BRING IT BLACK 811K
KLC MISS BRING 321N
 KLC MIS BLACK WALLY 02K

ELLINGSON LEGACY M229
 MS NLC MOJO S6119 B
 CNS DREAM ON L186
 SS MISS BREAK

PVF-BF BF26 BLACK JOKER
 LFE DAKOTA 6G
 3C WALLY C240 BLK
 KLC MISS ALERT RED 842H

This is the only direct daughter from our "Blackie" donor that we have ever consigned to a sale. We have retained almost every daughter of 321N as she built the most consistent, best footed and easiest keeping cow family in our black program. She and her daughters have raised us many show winners, sale features and high sellers over the years, including a flushmate brother to 62G that was one of our high sellers in 2018. This is one of our largest cow families because the Blackie females have been so productive. The last Blackie female sold was a 321N granddaughter who went to Spring Creek Simmentals. In 2019, that female's first son sold for \$11,500 to Rusylvia Cattle Co. 62G looks a lot like her great dam, is very quiet, boasts an adj WW of 732 lbs and will mature into a front pasture cow like every one of her sisters.



Whisper 76T, mat. sib of lot 52



Miss Bring 321N, dam of lot 52

SALE DAY NOTES:

RIDGELINE SIMMENTALS



**TRAVIS & CRYSTAL FISK AND FAMILY
PARRY, SK**
TRAVIS 306-897-0273 | CRYSTAL 306-897-0274
RIDGELINE_CATTLE@HOTMAIL.COM

Welcome to the 41st Keystone Konnection, first of we would like to thank the sale group and Bohrsen Marketing crew for allowing us to be part of this long standing sale. First off this year has brought many trials and tests from a drought to start the spring, regular rains through the haying season with it continuing into the fall. With all the tests Mother Nature has thrown at us it's a show of the resiliency that us in the Ag industry must endure. The two paternal sisters we bring you come right of the heart of our herd and 2 of our most prominent and productive cow family's. Be sure to stop by for a visit sale day as these two females have a bright future ahead of them.

53

RLC MS. SALLY 806F

1291167 • Jan 15, 2018 • RLC 806F • PUREBRED • POLLED

BRED HEIFER	BW	WW	YW	CE	BW	WW	YW	MK	MCE
	82			8.1	3.6	76.6	110.3	23.3	7.2

WHEATLAND CIRCUIT BREAKER
WHEATLAND KILL SWITCH
 HR/RR MS CANDACE T73

SS/PRS TAIL GATER 621Z
RLC MS. SALLY 601D
 RLC MS. SALLY 406B

WHEATLAND HIGHVOLTAGE122Y
 WHEATLAND LADY 81X
 REMINGTON RED LABEL HR
 GFI CANDACE G51

HTP/SVF DURACELL T52
 KENCO MILEY COTTONTAIL
 RF STRUT 106Y
 -F MS SALLY 4S

All bred to WLB Bounty Hunter 365C on Mar 27/19. No exposure.
 Sally is the first Kill Switch female we have offered for auction. She has brood cow stamped all over her. Sally is a stout made, wide pinned, big topped female that moves as fluidly as one can. Raised on a first calver, 601D is hitting on all cylinders when it comes to putting females into the replacement pen as she has a RF Merchant heifer in the pen again this year. With a service to WLB Bounty Hunter this female is one to look for this fall.



Bounty Hunter, service sire of lot 53

54

RLC TWYLIGHT 901G

1291168 • Jan 3, 2019 • RLC 901G • PUREBRED • POLLED

OPEN HEIFER	BW	WW	YW	CE	BW1	WW	YW	MK	MCE
	70			11.9		65	92.6	23.5	10.2

WHEATLAND CIRCUIT BREAKER
WHEATLAND KILL SWITCH
 HR/RR MS CANDACE T73

WHEATLAND BULL 629S
RLC TWYLIGHT 612D
 RLC TWYLA 4Z

WHEATLAND HIGHVOLTAGE122Y
 WHEATLAND LADY 81X
 REMINGTON RED LABEL HR
 GFI CANDACE G51

CNS DREAM ON L186
 WHEATLAND LADY 228M
 SCSF FREIGHTLINER 25X
 P HEREFORD/P HEREFORD

"Twinkle" is broody a heifer with a great presence about her and an exceptional personality. Making Twinkle a great Jr. project plus she is already kid broke. Twinkles dam 612D is a maternal sister to the dam of our CWA sale heifer 917G. This is a cow family that never misses making the possibilities with Twinkle endless.



Kill Switch, sire of lot 54

SUN RISE SIMMENTALS



EVAN & LINDA CUSS
 SPY HILL, SK
 H: 306-534-4700 | C: 306-745-7431
 CUSS@SASKTEL.NET
 WWW.SUNRISESIMMENTALS.COM

Picture to left: Evan & Linda Camping with grandsons, Duncan & Braiden Kueber at Clear Lake.

55

SUN RISE BLACK 18F

1230290 • Jan 20, 2018 • JTC 18F • PUREBRED • POLLED

BRED HEIFER

BW	WW	YW	CE	BW	WW	YW	MK	MCE
98	745		5.2	4.1	80.1	122.3	22.8	4.6

RCC/TCF LINE DRIVE M181
SPRINGCREEK LINER 56U
 NEVAS L93

HC POWER DRIVE 88H
 BOZ SWEET TEMPTATION
 TNT BLACK SHADOW J30
 NEVAS BLACK FOOT H819

LFE THE DARK NIGHT 350U
LFE BS SHEILA 82A
 LFE BS SHEILA 136T

R PLUS BLACKEDGE
 LFE BS MS LEWIS 646R
 LFE MR LEWIS 462P
 LFE SHEILA 110K

Pasture Exposed to HF Storm Center 26D from Apr 22 - June 9, 2019.
 Observed bred on April 30/19. Safe

- Sun Rise Black 18F is sired by the maternal giant, Spring Creek Liner 56U.
- LFE 82A has been one of Canadian Donor's top flush cows.
- Her calf will be a ¾ sibling to JTC 27F.
- We have two full sisters that have raised their first calf, enabling us to sell this heifer.



Sheila 82A, dam of lot 55

56

SUN RISE BLACK 27F

1230744 • Jan 27, 2018 • JTC 27F • 1/2 • POLLED

BRED HEIFER

BW	WW	YW	CE	BW	WW	YW	MK	MCE
88	710		8.7	1.9	72.5	119.9	28.5	6

MUSGRAVE BIG SKY
HF STORM CENTER 26D
 HF MISS BLACKCAP 296Y

CONNELLY EARNAN 076E
 SAV PRIMROSE 7861
 HF TIGER 5T
 HF MISS BLACKCAP 27R

SPRINGCREEK LINER 56U
SUN RISE BLACK 22D
 SUN RISE BLACK 93A

RCC/TCF LINE DRIVE M181
 NEVAS L93
 SPRINGCREEK ALIGN 100X
 SPRINGCREEK LINNE 23R

AI bred to LFE Style on April 7/19. Preg-checked Safe.

- Sun Rise Black 27F is our top ½ blood heifer.
- Her dam is a top 56U daughter (flush prospect).
- Her Grand dam produced our top selling ½ blood bull for \$14000.
- Storm Centre was purchased from Hamilton Farms for \$35,000 (also being used at Hamilton Farms)



JTC 4F, out of same cow family as lot 56

TERMS & CONDITIONS

TERMS: The terms of the sale are cash, cheque, and wire transfers, payable at par at the sale location unless satisfactory payment arrangements have been made prior to the sale with seller, buyer and Bohrsen Marketing Services. Bohrsen Marketing Services reserves the right to require a certified cheque as settlement before releasing any sale cattle. Payment in full must be made before cattle can be released and shipped. Exchange rates will be announced sale day and the sale will be held in Canadian funds.

BIDDING: All animals to sell through the sale must be sold by auction with each animal selling to the highest bidder. Private sales will not be allowed except as otherwise provided for in the terms and conditions. No by-bidding will be permitted.

DISPUTES: In cases of disputes, bidding will be reopened between the parties involved in the dispute. If no further bid is made, the buyer will be the person from whom the auctioneer accepted the last bid and the auctioneer's decision will be final.

ANNOUNCEMENTS: Any announcement from the auction block will take precedence over the printed matter in the catalogue. Buyers are therefore cautioned to pay attention to any such announcements.

LIABILITIES: All persons attend the sale at their own risk.

CERTIFICATE OF REGISTRY: A registration certificate issued by the applicable breed association and a certificate of registry duly transferred will be furnished to the buyer of each animal after final payment has been made.

PREGNANCY INFORMATION: All bred females have been pregnancy examined by an accredited

veterinarian, who has provided the seller with an estimated length of gestation. The estimated gestation period shall be used only as a guideline to calving and is not a guarantee of actual service. Bohrsen Marketing Services will provide supplement sheets with breeding services provided for the purchaser.

HEALTH: All sale animals have met all necessary health requirements and it is the buyer's responsibility and expense to determine health requirements for importing any animal into his province or state. Bohrsen Marketing Services assume no responsibility for the health status of any animal in the sale.

PURCHASER'S RISK: Each animal becomes the risk of the purchaser as soon as sold.

SHIPPING: Shipping of cattle, semen and/or embryos are the responsibility and expense of the purchaser. Purchasers are requested to provide shipping instructions at settlement on sale day.

INSURANCE: We strongly recommend the seller insurances for full value on all purchases.

ACCIDENTS: Every precaution will be taken to protect the safety and comfort of buyers, neither the Sales Management, auctioneer, consignors or Association assumes any responsibility in this matter and disclaims any liability legal or otherwise in the event of accident or loss of property.

INFORMATION SUPPLIED: The information contained in this catalogue is believed to be true and accurate. The seller has provided the information to Bohrsen Marketing Services and they assume no responsibility if the information supplied is not accurate.



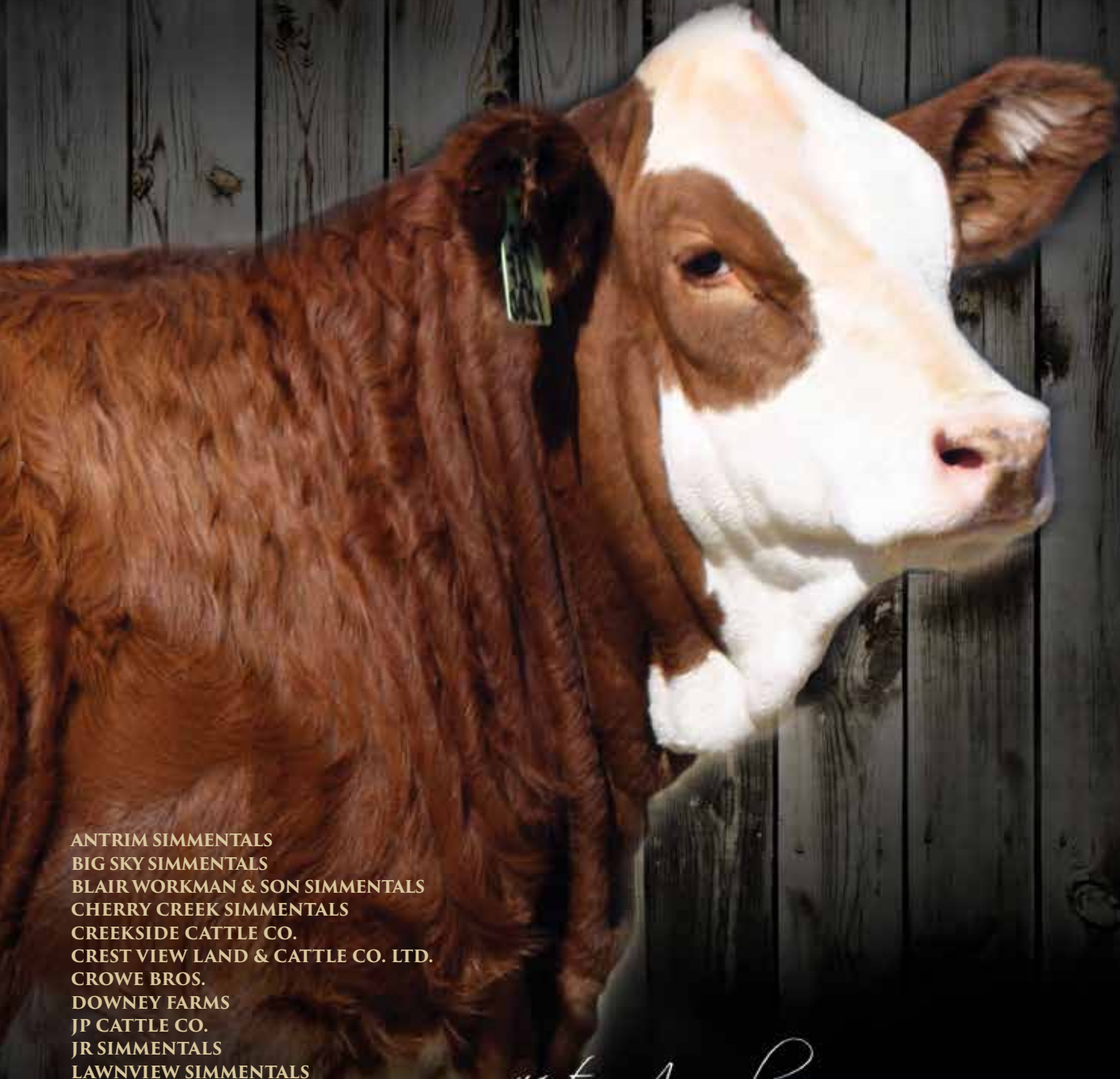
RETURN UNDELIVERED MAIL TO:

BOHRSON
MARKETING SERVICES

RR4 - SITE 7 - BOX 28 OLDS, AB T4H 1T8



RETURN POSTAGE GUARANTEED
PORT DE RETOUR GARANTI



ANTRIM SIMMENTALS
BIG SKY SIMMENTALS
BLAIR WORKMAN & SON SIMMENTALS
CHERRY CREEK SIMMENTALS
CREEKSIDE CATTLE CO.
CREST VIEW LAND & CATTLE CO. LTD.
CROWE BROS.
DOWNEY FARMS
JP CATTLE CO.
JR SIMMENTALS
LAWNVIEW SIMMENTALS
LONE STAR SIMMENTALS
MAPLE LAKE STOCK FARMS
MAR MAC FARMS
MCINTOSH RANCH
MCMANUS SIMMENTALS
MORE BROS. SIMMENTALS
NORTHERN LIGHT SIMMENTALS
RAINBOW RIVER SIMMENTALS
RIDGELINE SIMMENTALS
SUN RISE SIMMENTALS

41st Annual
**KEYSTONE
KONNECTION**

TUESDAY DECEMBER 10TH 2019 - BRANDON, MB

Simmental Sale