



**TER-RON** 03.19.2020

*Bull & Select Female Sale*

# ***SALE RESULTS***

***38,5 ANGUS YEARLINGS AVERAGED \$7,364***

***3 ANGUS TWO YEAR OLDS AVERAGED \$5,333***

***5 SIMMENTAL YEARLINGS AVERAGED \$4,900***

***1 SIMMENTAL TWO YEAR OLD AVERAGED \$3,500***

***18 OPEN HEIFERS AVERAGED \$3,050***





Sharon & Terry

## Welcome

On behalf of the entire crew here at Ter-Ron, we would like to take this opportunity to welcome you to our 15th annual bull sale. 2019 was a challenging year for many farmers with plenty of rainfall and very wet conditions. This did make for excellent crops, but many areas saw acres of crop left in the field. We feel very fortunate to have gotten our crop off. We have a positive outlook for 2020 with new goals and hopes for an outstanding year.

We are very excited about our bull pen this year! We feel it is one of our most consistent groups we have ever had. There is something for everyone and to suit every budget. There is not a bull or female in this sale we would not use in our own herd. We spend countless hours searching for new genetics to bring fresh new pedigrees combined with tried and true sire groups and cow families. We believe in the importance of the momma cow, and rarely purchase new genetics without having first seen the dam. The bulls will also have a complete semen evaluation prior to the sale. We hope we can meet your bull needs, whether it be a sleep ease heifer bull, or a performance cow bull. We stand behind our product 100%. If you have a problem with your purchase, we want to be the first to hear about it and we will make it right.

Our open heifers are right off the top of our heifer crop. There is something for everyone, from junior show prospects to the start of your next cow family. The heifers are palpated before the sale and you can be assured that the heifers are sound and ready to breed.

We would also like to thank all of our customers over the years, many are repeat buyers and we feel privileged that you have confidence in our program. We appreciate each and every one of you from long time customers to first time buyers.

Be sure to stop in any time before March 19 to have a look at the bull and heifer pens, or give Terry or Rob a call to discuss your bull needs. You can also contact any of the crew from Bohrsen Marketing. They are very knowledgeable about the cattle and can also answer any questions you may have or help you out if you cannot make it sale day. Mark Shologon from DLMS will also be here sale day if you prefer to bid online and he can be contacted prior to sale day as well.

We hope you can join us on Thursday, March 19, here at the farm at Forestburg AB. Join us for beef on a bun and refreshments before the sale and plan to stay after for visiting, hospitality, and a post sale lunch. If you have any questions, feel free to give Terry or Rob a call or stop by the farm.



Kasey, Maureen, Rob, Keely & Halley

Sincerely,

Terry & Sharon Adams

Rob, Maureen, Halley, Keely & Kasey Adams

## Contact Us

**Terry** Res: 780.582.2109 **Rob** Res: 780.582.3720  
Cell: 780.385.1189 Cell: 780.385.0849

Email: [smada@syban.net](mailto:smada@syban.net)

[www.ter-ronfarms.com](http://www.ter-ronfarms.com)





## Bull & Select Female Sale

**Thursday, March 19, 2020 - 1:00 p.m.**

**at Ter-Ron Farms - Forestburg, AB**

(3 miles South of Forestburg on RR 152 - map on page 4)

### Sale Staff

#### Auctioneer

Ryan Dorran  
403.507.6483

#### Ringmen

Taylor Richards - 306.821.4169  
Bryon Wolters - 780.581.8396

#### Consultant

Roger Peters - Peterosa Exports - 403.828.9815

### SALE DAY PHONE

Please Call Terry or Rob's Cell phone

*Please join us for lunch at 11:30 a.m.  
and stay for hospitality after the sale!*

**Can't make it to the sale?**  
**Internet Bidding Available.**

To view this sale visit [www.dlms.ca](http://www.dlms.ca), Fill out the registration form located under registration and sign-up for your free user account and select a username and password.

BIDDERS - To be approved as a bidder, Log in to [dlms.ca](http://dlms.ca) and click BUYER APPROVAL tab, select the sale you are interested in bidding at and click sign up.

For more information  
Call DLMS Reps:

Whitney Bosovich 780.991-3025

Mark Shologan 780.699.5082

**DLMS**  
[www.dlms.ca](http://www.dlms.ca)

*On Offer*

**48 - Angus Bulls**

**44 - Yearlings**

**4 - Two Year Olds**

**9 - Simmental Bulls**

**8 - Yearlings**

**1 - Two Year Old**

**18 - Angus Heifers**

### TER-RON FARMS

**Terry Adams**

**Res: 780.582.2109**

**Cell: 780.385.1189**

**Rob Adams**

**Res: 780.582.3720**

**Cell: 780.385.0849**

### BUYER REPRESENTATIVES



**BOHRSON**  
MARKETING SERVICES

Scott Bohrson  
403.370.3010

Taylor Richards  
306.821.4169

Darryl Snider  
780.385.5561

Matt Criddle  
306.539.6934



Gary Rairdan  
Cell 403-740-6823

### Sight Unseen Purchase Guarantee

If you are unable to attend our sale, we have a "Sight Unseen Purchase Plan". Under this program you will tell us about your needs and price and we will then have a buyer of your choice purchase the bull on your behalf. Upon delivery, if you are not satisfied, we still own the bull.



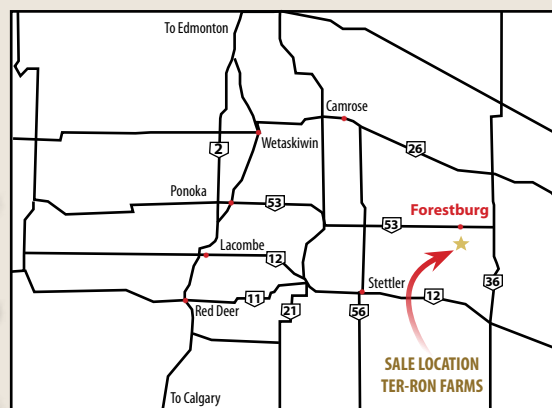
**ANY BUYER IN ATTENDANCE WILL BE ELIGIBLE FOR A \$500 SALE CREDIT**

To be used on SALE DAY, we appreciate you taking your time to attend our sale



**Forestburg, AB**

**3 miles South of Forestburg on RR 152**



### Photographer

Grant Rolston Photography  
403.593.2217

### Canadian Farm Insurance Corp.

Agent Jill Wildman  
Ph: 780-305-1146

*All bulls staying at the farm must be insured by the purchaser.*

### Special Representatives

Trevor Welch  
Canadian Angus Association President  
Mark Matejka  
Canadian Red Angus Promotion Society  
Blake Morton  
Alberta Angus Association President  
Brian Good  
Canadian Angus Association Field Rep.

### Accommodations

Please do not hesitate to call Maureen Adams to assist you with accommodations.

**Stettler:** Super 8 - 403 742 3391  
Ramada - 403 742 6555

**Camrose:** Super 8 - 780 672 7303  
Ramada - 780 672 5220

A few rooms are available at Forestburg Motor Inn, please let Maureen know if you would like one of these.



Joe McLean  
Beef Consultant  
403-393-3302

Doug Roxburgh  
Beef Consultant  
403-392-4541

Kelly Resler  
Beef Consultant  
403-506-7474

Trevor Hamilton  
Beef Consultant  
403-506-1114

Tom McNeely  
Co-Founder  
780-679-7220

Mark Cameron  
VP of Nutrition  
and Consulting  
403-360-1669

It is a pleasure working with such a great group of people as those at Ter Ron. The future of the Ter Ron operation is in great shape with the next generation.

The cow herd utilize a customized mineral program that is balanced throughout the year. This helps in the proper development of the bull calves at a young age. The bulls feeding program is built to maximize forage utilization and gut health. The bulls are developed on grass with their moms and then moved onto a

balanced TMR that promotes lean muscle growth. Organic minerals are used to ensure proper immune function and over all health of bulls. The overall nutritional health and development of the bulls and the entire cow herd is of utmost importance and is constantly being tweaked to meet environmental and seasonal conditions

If you have any questions about the nutrition of the sale bulls please feel free to call.



**Tom McNeely**  
Brand Manager / Co-Founder  
(780) 679-7220  
tomj.mcneely@bullseyefeeds.ca





Ter-Ron Farms is globally recognized and highly respected throughout the industry for elite genetics that excel in production value. The Adams' crew are some of the very best cattle enthusiasts who have one of the very top cowherds we have the opportunity to market each year. The udder quality, foot strength, structural correctness, attractiveness, eye appeal and overall completeness in their cattle is incredibly strong. They are extremely particular in the genetics they source and always travel the extra mile to incorporate new lineage to increase their quality to in turn, supply the very best product for you their valued customer to excel with.

The set of Red Angus bulls on offer are simply outstanding and they somehow have raised the bar once again to accumulate a group that is amongst the strongest we've seen all spring long. Power and performance combined with calving ease has this set as personal favourites and we can confidently state that we know you'll be impressed too when you view them. The select group of Red Angus open females on offer are impressive again and hand picked off the top of their replacement pen to showcase the strength of their genetics and ability to produce highly sought after sons and daughters in every sire group. The Simmental bull division continues to improve on depth of quality and strength of pedigree with a high performing pen of individuals that are bred for profitability.

As you have the opportunity this spring to source your upcoming herd sire or replacement female from any program, we highly recommend placing Ter-Ron Farms at the very top of the list for the very best cattle backed by outstanding people. The Adams' are integrity driven, hard working cattlemen that stand behind their product 100% and we truly enjoy working alongside them year round and can say the customer satisfaction feedback is as high here as any sale we work. We hope you can be with us on sale day but if you can't attend, feel free to contact the Adams' or any of the sales staff to represent your needs in a professional and confidential manner. See you in Forestburg for the 15th Annual Sale on location at Ter-Ron Farms!

Best regards,

The Bohrson Marketing team

**Scott Bohrson**  
403.370.3010

**Taylor Richards**  
306.821.4169

**Darryl Snider**  
780.385.5561

**Matt Criddle**  
306.539.6934

✓ All bulls will be  
**SEMEN TESTED**  
and vet inspected.

✓ **SALE DAY WEIGHTS and**  
**SCROTAL MEASUREMENTS**  
will be provided sale day.

**SALE VIDEOS**  
[www.ter-ronfarms.com](http://www.ter-ronfarms.com)  
OR [cattlevids.ca](http://cattlevids.ca)

### Calving Ease Legend

Calving Ease is often related to birth weight of a bull. This is partly true but there are other factors that influence calving ease. The dam and her management are at least 50% of calving ease. Also, the consistency of the birth weights of the sire and dam should be considered. Nutrition, gestation and environment all influence birth weight. We have rated each bull in the sale based on the information we have.

- \*\*\* Should produce minimal problems when bred to moderate size first calf heifers
- \*\* Recommend for second calvers or smaller framed cows 1100 lbs to 1300 lbs
- \* Recommend for mature cows 1400 lbs plus

### Delivery Options

- A. If you wish you may take your cattle home sale day or within a week and receive a \$100 discount per purchase.
- B. Bulls and Females will be delivered free of charge up to 250 miles, further at cost. Delivery usually commences 2-3 weeks after sale.
- C. Bulls may be kept at Ter-Ron free of charge until May 1, after that, \$3.00 per day will be charged and animals must be picked up by the purchaser.

\*\*\*\*All bulls staying at the farm must be insured by the purchaser - see page 4 for insurance.



## RED COMBEST JUGGERNAUT 1613D

CLFX 1613D 1948707 February 27 2016  
BW: 86 lbs Adj 205: 952 lbs Adj 365: 1316 lbs

RED WHEEL ALLIANCE 22U  
**RED BAR-E-L ANTHEM 46A**  
RED BAR-E-L FRADO 209U

RED YY RED KNIGHT 640F  
**RED BAR-E-L MEG 85N**  
RED BAR-E-L MEG 035G

RED NORTHLINE ATLANTIC CITY  
RED WHEEL AUBURN 2K  
RED SSS BOOM TOWN 260D  
RED BAR-E-L SCARLET 193S  
RED YY 23L TOPPER 408D  
RED TOP GOLDIE 40U  
RED GLESBAR PATRIOT 20D  
RED CUMNOCK MEG 776X

**BW: 4.3 WW: 53 YW: 75 Milk: 23 Total Mat: 50**

- Juggernaut was purchased as the high selling bull in the Combest Red Angus sale with TNF Angus
- Massive, super soft made, square hipped, big footed, hairy bull that looks great from all angles
- Sired by the Anthem bull and his Dam, Meg 85N, may be the best Red Angus female Bar EL has ever had
- Unmatched performance, and maybe one of the most consistent bulls we have ever used
- Did an excellent job siring both sexes. Calving the first females right now and they are everything we had hoped for
- Owned with TNF Angus & Combest Red Angus

## RED U-2 REVERENCE 198C

DUA 198C 1837764 January 22 2015  
BW: 81 lbs Adj 205: 778 lbs Adj 365: 1447 lbs

RED U-2 RECON 192Y  
**RED U-2 RECKONING 149A**  
RED U-2 ANEXA 271Y

RED BDL UPROAR 124U  
**RED U-2 LAKOTA 427Y**  
RED FLYING K LAKOTA 104U

RED BRYLOR WEST JET 69W  
RED U-2 LARKABA 8133U  
RED HOWE MAGNUM 169W  
RED U-2 ANEXA 333N  
RED GOLD-BAR STONE COLD 115S  
RED TOWAW DOLL 100K  
RED U-2 BIG LEAGUE 544R  
RED FLYING K LAKOTA 68N

**BW: -0.4 WW: 32 YW: 53 Milk: 23 Total Mat: 39**

- Offspring have the same attributes with extra depth, muscle shape, hair coat and have plenty of style
- Dark in colour, on a real solid foot, in a proud athletic package
- Daughters did a good job producing and there are several progeny out of Reverence daughters
- Owned with Allison Farms



Dam of Red Bar-E-L Better Magic 194D

## RED BAR-E-L BETTER MAGIC 194D

YHB 194D 1923113 April 04 2016  
BW: 82 lbs Adj 205: 780 lbs Adj 365: 1260 lbs

RED TOWAW INDEED 104H  
**RED BAR-E-L AB MAGIC MIKE 189Z**  
RED BAR-E-L MEG 85N

RED BAR-E-L GAMBLER 87X  
**RED BAR-E-L LARKABA 77A**  
RED LPH LARKABA 12T

RED CC EXPANSION 5E  
RED TOWAW MOLLY 67C  
RED YY RED KNIGHT 640F  
RED BAR-E-L MEG 035G  
RED LAZY MC COWBOY CUT 26U  
RED BAR-E-L MINOLA 243T  
RED SHODEREE DESTINY 114P  
RED BAR-E-L LARKABA 79H

**BW: 2.5 WW: 34 YW: 48 Milk: 25 Total Mat: 42**

- Purchased out of the Bar-E-L sale to infuse the Magic Mike bull into our program after seeing daughters working at Wheeler's and Allison's
- Progeny are soft made, easy fleshing, and very consistent in their type
- The maternal traits of Better Magic should be tremendous as his pedigree is stacked with some great cows





## RED MRLA UPLOAD 165E

MRLA 165E 1955956 February 10 2017  
BW: 82 lbs Adj 205: 793 lbs Adj 365: 1384 lbs

RITO 707 OF IDEAL 3407 7075

S A V RESOURCE 1441

S A V BLACKCAP MAY 4136

### MRLA RELOAD 56C

RED BAR-E-L WARDEN 144W

RED MRLA MISS 641Y

RED MRLA 793R

RED LAZY MC CC DETOUR 2W

RED MRLA TILT 80Z

RED MRLA MISS 678W

### RED MRLA MISS 4371B

RED SOO LINE MOMENTUM 7051

RED MRLA MISS 345X

RED MRLA MISS 269T

**BW: 2.3 WW: 43 YW: 77 Milk: 25 Total Mat: 47**

- Purchased out of the McMillan Bull Sale for \$20000
- Upload offers outcross genetics to the Red Angus breed with the black sire SAV Resource 1441 being the Grandsire of 165E
- Progeny have length, muscle and balance, along with calving ease
- Daughters have a feminine, productive, maternal look and are very easy fleshing. We are excited to get them into production
- Owned with Six Mile Ranch

## TER-RON CONTINENTAL 120D

RPAH 120D 1900795 February 08 2016  
BW: 98 lbs Adj 205: 736 lbs Adj 365: 1380 lbs

S A V HARVESTOR 0338  
**S A V INTERNATIONAL 2020**  
S A V EMBLYNETTE 5483

RED TER-RON TOUCHDOWN 8S  
**RED TER-RON AMBER 46W**  
RED TER-RON AMBER 28P

S A V HERITAGE 6295  
S A V EMBLYNETTE 7749  
S A V 8180 TRAVELER 004  
S A V EMBLYNETTE 7260  
RED SHODEREE DESTINY 114P  
RED TER-RON STARLET 8K  
RED TER-RON MAMBO 28K  
RED EV AMBER 28H

**BW: 3.2 WW: 57 YW: 86 Milk: 22 Total Mat: 51**

- Continental was the outcross black/red carrier bull that sold at our 2017 sale for \$15000 to Circle G Angus
- Combines power, balance, thickness, depth, and the strong maternal genetics of SAV International
- Near perfect feet in this impressive individual
- Mother is also the Dam to Bazinga
- Owned by Circle G Angus



**\$6,000**  
**BRAD LOHR**



**2G**

**TER-RON  
STEALTH 2G**

HFX 2G 2093520 January 05 2019 CE\*\*  
BW: 83 lbs Adj 205: 798 lbs Adj 365: 1391 lbs

MRLA RELOAD 56C  
**RED MRLA UPLOAD 165E**  
RED MRLA MISS 4371B

SAV INTERNATIONAL 2020  
**TER-RON LAURYN 92E**  
RED TER-RON LAURYN 59A

SAV RESOURCE 1441  
RED MRLA MISS 641Y  
RED MRLA TILT 80Z  
RED MRLA MISS 345X  
SAV HARVESTOR 0338  
SAV EMBLYNETTE 5483  
RED FLYING K JULIAN 72Y  
RED TER-RON LAURYN 56Y

**BW: 2.5 WW: 58 YW: 95 Milk: 24 Total Mat: 53**

- Stealth is a very muscular, big bodied, red carrier bull that will have the ability to thrive in a low input environment.
- His mass and natural thickness, along with his unique pedigree will make him a bull that will have lots of admirers on sale day
- Out of a first calf SAV International daughter that is flawless. She is great footed and near perfect uddered. She is one that we have high expectations for down the road
- Dam is a maternal sister to the Lot 6G bull

**RED TER-RON  
GRINCH 6G**

HFX 6G 2093522 January 07 2019 CE\*  
BW: 96 lbs Adj 205: 734 lbs Adj 365: 1466 lbs

RED BAR-E-L ANTHEM 46A  
**RED COMBEST JUGGERNAUT 1613D**  
RED BAR-E-L MEG 85N

RED FLYING K JULIAN 72Y  
**RED TER-RON LAURYN 59A**  
RED TER-RON LAURYN 56Y

RED WHEEL ALLIANCE 22U  
RED BAR-E-L FRADO 209U  
RED YY RED KNIGHT 640F  
RED BAR-E-L MEG 035G  
RED TONGUERIVER JUBILATION  
RED FLYING K TAMMY 15W  
RED TER-RON REALDEAL 01W  
RED TER-RON LAURYN 918N

**BW: 3.7 WW: 46 YW: 69 Milk: 20 Total Mat: 43**

- Grinch is a serious performance bull that is well balanced, with added length, square hiped, long as a train, and very hairy
- 6G moves like a cat on a real solid foot and has a real presence to him
- Dam is a real solid producing Julian daughter, the kind you wish you had a whole herd of
- Full brother sold in last year's sale to Jason Varty from Provost

**6G**

**\$9,750**  
**CORONA CREEK &  
DAVE MOHR**



6G is a full brother to 59F who sold in last year's sale to Varty Farms



SAV International 2020 - Sire to dam of Lot 2G



**\$50,000**

**TRIPLE \$ RED ANGUS**



**9G**

**RED TER-RON  
SHOWDOWN 9G**

HFX 9G 2093524

January 08 2019 CE \*

BW: 85 lbs Adj 205: 836 lbs

Adj 365: 1382 lbs

RED WHEEL ALLIANCE 22U

RED BAR-E-L ANTHEM 46A

RED BAR-E-L FRADO 209U

**RED COMBEST JUGGERNAUT 1613D**

RED YY RED KNIGHT 640F

RED BAR-E-L MEG 85N

RED BAR-E-L MEG 035G

RED ZAMA PINE 517G

RED BRYLOR PANAMA 69P

RED THAT'LL DO RENEE 683H

**RED TER-RON GOLDIE 840T**

RED TER-RON MAMBO 28K

RED TER-RON GOLDIE 240P

RED TER-RON GOLDIE 240L

**Retaining 1/2 Interest, 1/2 Possession**

**BW: 1.9 WW: 49 YW: 67 Milk: 24 Total Mat: 49**

- Showdown is maybe one of the best herdsire prospects we have ever raised. Dark cherry red in colour, super sound, stout made, and wide based with loads of hair and a real solid foot
- The softness and overall balance that 9G exhibits is amazing. He looks great from every angle
- His dam is still going strong at 13 years of age. She is super sound, has a great foot and a real solid udder. 840T produces year after year.
- Full sister was the high selling female in last year's sale to Ranch EL Ermitano in Mexico.
- 840T has always been very consistent with her birth weights
- Great Granddam is the mother to the legendary Fully Loaded
- Herd Bull time! One to build a herd around.
- Selling ½ interest, ½ possession. Call for details.



Full sister to 9G was high selling female in last year's sale to Rancho El Ermitano – Mexico



Dam of 9G



**\$8,000**

**ERSKINE FARMING CO**



**10G**

**RED TER-RON GUINNESS 10G**

HFX 10G 2093526 January 09 2019 CE \*\*\*  
BW: 68 lbs Adj 205: 644 lbs Adj 365: 1129 lbs

MRLA RELOAD 56C  
**RED MRLA UPLOAD 165E**  
RED MRLA MISS 4371B

TER-RON PARK PLACE 18Y  
**TER-RON DUCHESS 153B**  
RED TER-RON DUCHESS 13S

S A V RESOURCE 1441  
RED MRLA MISS 641Y  
RED MRLA TILT 80Z  
RED MRLA MISS 345X  
HF TIGER 5T  
RED TER-RON GOLDIE 240L  
RED HOWE MR MATRIX 7L  
RED MAC DUCHESS 31F

**BW: -2.2 WW: 26 YW: 44 Milk: 22 Total Mat: 35**

- Guinness is a very complete calving ease bull that will allow you to rest at night.
- Dark cherry red in colour, very docile, and a very complete made bull
- Dam is a super attractive, great footed Park Place daughter that is from a long line of producers

**15G**

**RED TER-RON GRAPHITE 15G**

HFX 15G 2093528 January 10 2019 CE \*\*\*  
BW: 78 lbs Adj 205: 671 lbs Adj 365: 1225 lbs

RED BAR-E-L ANTHEM 46A  
**RED COMBEST JUGGERNAUT 1613D**  
RED BAR-E-L MEG 85N

RED TER-RON GIT-R-DONE 640S  
**TER-RON CRESTA 109X**  
TER-RON CRESTA 116S

RED WHEEL ALLIANCE 22U  
RED BAR-E-L FRADO 209U  
RED YY RED KNIGHT 640F  
RED BAR-E-L MEG 035G  
RED SHODEREE DESTINY 114P  
RED TER-RON GOLDIE 240L  
RED TER-RON OLYMPIAN 822P  
HB BLACK LASS 116J

**BW: 0.2 WW: 32 YW: 41 Milk: 20 Total Mat: 36**

- Graphite is a calving ease bull that brings a lot to the table genetically and visually
- The Juggernauts have established themselves as performance cattle and 15G is no exception. Lots of rib, shape, depth of body, and a stylish look to this solid bull
- Mother is a black cow that has an impeccable udder attachment and has been a real solid producer
- Other sons of 109X have sold to Wildor Farms and Van Slyke Bros.

**\$5,000**

**PRAIRIE HALL FARMS**



**17G**

**RED TER-RON UPRIGHT 17G**

HFX 17G 2093529 January 10 2019 TWIN CE \*\*\*  
BW: 67 lbs Adj 205: 644 lbs Adj 365: 1285 lbs

MRLA RELOAD 56C  
**RED MRLA UPLOAD 165E**  
RED MRLA MISS 4371B

RED BRYLOR PANAMA 69P  
**RED TER-RON BOBBIE 93T**  
RED TER-RON BOBBIE 093R

S A V RESOURCE 1441  
RED MRLA MISS 641Y  
RED MRLA TILT 80Z  
RED MRLA MISS 345X  
RED ZAMA PINE 517G  
RED THAT'LL DO RENEE 683H  
RED HOWE MR MATRIX 7L  
RED TER-RON BOBBIE 093N

**BW: 2 WW: 31 YW: 52 Milk: 25 Total Mat: 40**

- Upright showcases phenotype and genotype merit in a moderate frame, explosive rib shape and softness. He is a bull that catches your eye when you walk in the pen
- Dam has been a prolific producer, and continues to do it again year after year
- 93T has also produced the \$36000 Wicked bull that sold to Lucky 7 Cattle, Solo Cup that sold to David Mohr, and Wallace that sold to Lauron.
- Another son sold to Ron Symes, one to Wildor, and the Sully bull purchased by Ellwood Farms. You can see the trend here.... She can produce!!!!
- Twin

**\$5,500**

**LITTLE VALLEY VIEW RANCH**





**\$7,500**

**WILDOR FARMS LTD**



**26G**

**RED TER-RON  
UPROAR 26G**

RPAH 26G 2093621  
January 13 2019 CE \*  
BW: 94 lbs Adj 205: 802 lbs  
Adj 365: 1221 lbs

S A V RESOURCE 1441  
MRLA RELOAD 56C  
RED MRLA MISS 641Y  
**RED MRLA UPLOAD 165E**  
RED MRLA TILT 80Z  
RED MRLA MISS 4371B  
RED MRLA MISS 345X  
RED CV FOUR TIMES  
RED FCC RAMBO 502  
COPPER LASS 2392

**RED RUST MISS 329A**  
RED SIX MILE SAKIC 832S  
RED NSFR MTX W14  
RED LMG MTX 3032



Dam of Lot 26G



26G – Senior Bull Calf  
Champion CWA 2019



Reserve Champion Bull  
Red Roundup 2019

**BW: 2.8 WW: 48 YW: 79 Milk: 21 Total Mat: 45**

- Uproar is an Upload son that has been a favourite of ours since he was a calf.
- Dark cherry red in colour, big hipped, stout made, athletic, and has a real presence to him.
- Uproar was Reserve Champion Bull at Canadian Red Round Up this past fall as well as Senior Bull Calf Champion at Canadian Western Agribition
- Dam is a high volume female with an excellent udder. Brother sold in last year's sale to long time supporters Hadwin Cattle Co of Consort
- Note... 329A is also the Grand dam to Lot 72G

**\$9,750**

**RON SYMES**



**23G**

**RED TER-RON  
GAMETIME 23G**

RPAH 23G 2093620 January 12 2019 CE \*  
BW: 89 lbs Adj 205: 698 lbs Adj 365: 1319 lbs

RED BAR-E-L ANTHEM 46A  
**RED COMBEST JUGGERNAUT 1613D**  
RED BAR-E-L MEG 85N

RED FLYING K JULIAN 72Y  
**RED TER-RON DIAMOND MIST 167B**  
RED TER-RON DIAMOND MIST 164Y

RED WHEEL ALLIANCE 22U  
RED BAR-E-L FRADO 209U  
RED YY RED KNIGHT 640F  
RED BAR-E-L MEG 035G  
RED TONGUERIVER JUBILATION  
RED FLYING K TAMMY 15W  
RED LAZY MC KINGMAN 16W  
RED TER-RON DIAMOND MIST 29S

**BW: 3.3 WW: 41 YW: 65 Milk: 22 Total Mat: 43**

- Gametime is a cherry red, deep ribbed herd sire prospect that has extra dimension and a solid foot quality
- Full brother sold in last year's sale to Topham's for \$18000
- Gametime's Dam, 167B, is a model female from the famed Diamond Mist family. A 167B daughter is working in our herd, and her bull sells in this sale as Lot 141G.





**27G**

## TER-RON ENTICED 27G

HFX 27G 2093536 January 13 2019 CE \*\*\*  
BW: 68 lbs Adj 205: 613 lbs Adj 365: 1098 lbs

S A V INTERNATIONAL 2020  
**TER-RON CONTINENTAL 120D**  
RED TER-RON AMBER 46W

RED ROYAL K-C DUKE 08R  
**RED TER-RON HEATHER 31Z**  
RED HIPS HEATHER 61U

S A V HARVESTOR 0338  
S A V EMBLYNETTE 5483  
RED TER-RON TOUCHDOWN 8S  
RED TER-RON AMBER 28P  
RED SPRING CREEK HI HO 8K  
RED ROYAL DUCHESS 08L  
RED KBJ WILD CARD 1024S  
RED RCR HEATHER 56H

**BW: -1.4 WW: 20 YW: 32 Milk: 21 Total Mat: 31**

- Enticed is a sleep at night calving ease bull that will allow you to stay rested when calving heifers
- Lots of shape to his top, great depth of body and has a great hair coat
- The females out of 27G should be really nice, as his dam is a beautiful cow that will be around for a long time.

**29G**

## RED TER-RON UPGRADE 29G

HFX 29G 2093537 January 14 2019 CE \*\*\*  
BW: 78 lbs Adj 205: 623 lbs Adj 365: 1535 lbs

MRLA RELOAD 56C  
**RED MRLA UPLOAD 165E**  
RED MRLA MISS 4371B

RED U-2 RENOWN 193C  
**RED TER-RON LAURYN 13E**  
RED TER-RON LAURYN 140C

S A V RESOURCE 1441  
RED MRLA MISS 641Y  
RED MRLA TILT 80Z  
RED MRLA MISS 345X  
RED U-2 RECKONING 149A  
RED U-2 ENVIOUS 147X  
RED TER-RON PARKER 34A  
RED TER-RON LAURYN 190U

**BW: 3.6 WW: 40 YW: 66 Milk: 20 Total Mat: 40**

- High quality Upload son that blends calving ease and performance
- Upgrade 29G is a very complete made, well balanced bull that has a lot of genetic merit
- Dam is a first calf Renown daughter that is moderate in size, sure footed, and excellent uddered

**\$6,500**

**ELLWOOD FARMS LTD**



**\$4,500**

**PAUL DOBINSON**

**33G**

## TER-RON CONTINENTAL 33G

HFX 33G 2093539 January 15 2019 CE \*  
BW: 93 lbs Adj 205: 792 lbs Adj 365: 1431 lbs

S A V INTERNATIONAL 2020  
**TER-RON CONTINENTAL 120D**  
RED TER-RON AMBER 46W

RED ROYAL K-C DUKE 08R  
**RED TER-RON DANA 125Z**  
RED TER-RON DANA 100R

S A V HARVESTOR 0338  
S A V EMBLYNETTE 5483  
RED TER-RON TOUCHDOWN 8S  
RED TER-RON AMBER 28P  
RED SPRING CREEK HI HO 8K  
RED ROYAL DUCHESS 08L  
RED TER-RON RUEBEN 390N  
RED TER-RON DANA 100N

**BW: 2.8 WW: 47 YW: 78 Milk: 20 Total Mat: 44**

- 33G is a son of the Continental bull that has as much performance as any bull in the sale
- He is well balanced with extra length of body, depth and has loads of hair on a sound structure, built to travel
- His dam is a very sound uddered Duke daughter that has hit a real home run with this guy





**\$7,500**

**BOB CAMPBELL**

**45G**

## RED TER-RON UPSTATE 45G

RPAH 45G 2093622

January 18 2019 CE \*\*

BW: 82 lbs Adj 205: 727 lbs

Adj 365: 1280 lbs

**BW: 1.7 WW: 43 YW: 59 Milk: 25 Total Mat: 47**

- Upstate is a bull that commands your attention the moment you walk into the pen. He displays exceptional muscle shape, thickness, hair coat, and angus breed character
- Diamond Mist 54A is quickly becoming one of the top matrons in the herd. She is a moderate framed, sharp fronted, and deep bodied model Julian daughter
- 54A also produced a full sister that was the high selling heifer calf at Red Roundup in 2018 to Brackel Ridge Cattle Co in New York
- Herd bull time here!!



Full sister to 45G was High Selling Female at Red Roundup 2018

RED BAR-E-L ANTHEM 46A  
**RED COMBEST JUGGERNAUT 1613D**  
RED BAR-E-L MEG 85N

RED FLYING K JULIAN 72Y  
**TER-RON DIAMOND MIST 54A**  
TER-RON DIAMOND MIST 105Y

RED WHEEL ALLIANCE 22U  
RED BAR-E-L FRADO 209U  
RED YY RED KNIGHT 640F  
RED BAR-E-L MEG 035G  
RED TONGUERIVER JUBILATION  
RED FLYING K TAMMY 15W  
RED TER-RON REALDEAL 01W  
BIG SKY DIAMOND MIST 290

**\$10,500**

**ADAIR RANCH**

**46G**

## RED TER-RON GERONIMO 46G

HFX 46G 2093547 January 19 2019 CE \*\*

BW: 83 lbs Adj 205: 717 lbs Adj 365: 1441 lbs

RED BAR-E-L ANTHEM 46A  
**RED COMBEST JUGGERNAUT 1613D**  
RED BAR-E-L MEG 85N

RED FLYING K JULIAN 72Y  
**RED TER-RON BOBBIE 42B**  
RED TER-RON BOBBIE 122X

RED WHEEL ALLIANCE 22U  
RED BAR-E-L FRADO 209U  
RED YY RED KNIGHT 640F  
RED BAR-E-L MEG 035G  
RED TONGUERIVER JUBILATION  
RED FLYING K TAMMY 15W  
RED THAT'LL DO UNBELIEVABLE 6U  
RED TER-RON BOBBIE 93T

**BW: 2 WW: 37 YW: 58 Milk: 21 Total Mat: 40**

- Geronimo 46G has herd bull written all over him with his massive top and big square hip. He definitely is one of the biggest bodied bulls in the sale
- His dam is also a maternal sister to Lot 17G and raised an \$18000 full brother that sold in last year's sale to Lone Stone Farms at Westlock
- 46G may be a little short on ears, but real high on quality



Full Brother of 46G sold to Lone Stone Farms



**\$7,500**

**DON & LEDA JENSEN**



**50G**

**RED TER-RON  
GARLAND 50G**

RPAH 50G 2103875 January 19 2019 CE \*  
BW: 86 lbs Adj 205: 719 lbs Adj 365: 1391 lbs

RED BAR-E-L ANTHEM 46A  
**RED COMBEST JUGGERNAUT 1613D**  
RED BAR-E-L MEG 85N

RED TOP PRECISION 52S  
**RED TER-RON DIAMOND MIST 184W**  
RED TER-RON DIAMOND MIST 290P

RED WHEEL ALLIANCE 22U  
RED BAR-E-L FRADO 209U  
RED YY RED KNIGHT 640F  
RED BAR-E-L MEG 035G  
RED COLE PRECISION 09N NHC  
RED TOP DOLL 4N  
RED SVR EXPLOSION 23M  
BIG SKY DIAMOND MIST 290

**BW: 2.5 WW: 45 YW: 66 Milk: 23 Total Mat: 46**

- Very long bodied performance bull with the Juggernaut hair, square hipped, lots of dimension and style to burn
- His dam, 184W is another cow from the Diamond Mist line that continues to raise the good ones. 184W has also raised bulls that have sold to John Schmidt, Hadwins, and Rooke Ranching

GP

**52G**

**RED TER-RON  
UPLINE 52G**

RPAH 52G 2093627 January 20 2019 CE \*\*\*  
BW: 69 lbs Adj 205: 680 lbs Adj 365: 1300 lbs

MRLA RELOAD 56C  
**RED MRLA UPLOAD 165E**  
RED MRLA MISS 4371B

RED TWIN HERITAGE HUSTLE 25A  
**RED TER-RON DIAMOND MIST 99E**  
RED TER-RON DIAMOND MIST 34B

SAV RESOURCE 1441  
RED MRLA MISS 641Y  
RED MRLA TILT 80Z  
RED MRLA MISS 345X  
RED HOWE HUSTLE 13X  
RED TWIN HERITAGE CHER 293S  
RED FLYING K JULIAN 72Y  
RED TER-RON DIAMOND MIST 53X

**BW: 0.6 WW: 36 YW: 62 Milk: 24 Total Mat: 42**

- Upline is a very complete made calving ease specialist that will provide restful nights
- Cherry red in colour, smooth shouldered and stylish. The daughters out of this bull should be a dream!!
- His two year old Hustle mother has impeccable udder quality
- Grandmother to 52G is also the mother to the \$17000 Juggernaut daughter that sold to Maria Taschuk this last fall at Red Roundup



GP

**\$10,000**

**NORTH 40 ANGUS**

**53G**

**RED TER-RON  
GENESIS 53G**

HFX 53G 2093548 January 21 2019 CE \*  
BW: 96 lbs Adj 205: 737 lbs Adj 365: 1282 lbs

RED U-2 RECKONING 149A  
**RED U-2 RENOWN 193C**  
RED U-2 ENVIOUS 147X

RED FEDDES BIG SKY R9  
**RED TER-RON SOAPY 152B**  
RED TER-RON SOAPY 910P

RED U-2 RECON 192Y  
RED U-2 ANEXA 271Y  
RED U-2 DYNAMO 7021T  
RED U-2 ENVIOUS 216M  
RED BIEBER MAKE MIMI 7249  
RED FEDDES LAKINA 310  
RED HEARTLAND KNIGHT CHARM 11L  
RED TER-RON SOAPY 910M

**BW: 4.8 WW: 46 YW: 74 Milk: 19 Total Mat: 42**

- Genesis is a massive bodied herd bull by Renown that will add muscle and maternal excellence to your herd
- Solid feet and excellent angus character are traits that make this guy appealing
- His big bodied dam always puts a little extra into her calves

**\$4,500**

**DARREN OLSON**



GP



**\$8,500**

**ELKWATER FARMING COMPANY**



**54G**

**RED TER-RON  
GODFATHER 54G**

HAL 54G 2093663

January 21 2019 CE \*

BW: 92 lbs Adj 205: 846 lbs

Adj 365: 1383 lbs

RED WHEEL ALLIANCE 22U

RED BAR-E-L ANTHEM 46A

RED BAR-E-L FRADO 209U

**RED COMBEST JUGGERNAUT 1613D**

RED YY RED KNIGHT 640F

RED BAR-E-L MEG 85N

RED BAR-E-L MEG 035G

RED SSS OLY 554T

RED SSS STAUNCH 64Y

RED SSS SCAARA 429W

**RED KENRAY BARONESS 13C**

RED NCJ MYSTIFIED 16X

RED K F BARONESS 57Z

RED K F BARONESS 58R

**BW: 3.9 WW: 60 YW: 90 Milk: 31 Total Mat: 61**

- Godfather is a maternal brother to the \$37000 Riddler bull that sold to Wheeler Stock Farm and Lodoen Cattle Co. in last year's sale
- Big powerful growth and performance bull with superb depth from end to end
- When you really analyze this guy, he is quick to reveal his overall stoutness and extra dimension
- His dam, Baroness 13C, is now in our donor program. Her first heifer sold to River's Edge Farms for \$14000
- An added bonus for the EPD followers is 54G is in the top 2% for WW, top 5% for YW, and top 1% for Milk & Total Maternal
- The Godfather is worth a look!!



*Dam to 54G*



**\$4,750**

**BLAIR EWASIUK**



**65G**

**RED TER-RON  
RAPTOR 65G**

HFX 65G 2093554 January 23 2019 CE \*\*\*

BW: 79 lbs Adj 205: 680 lbs Adj 365: 1259 lbs

S A V INTERNATIONAL 2020

**TER-RON CONTINENTAL 120D**

RED TER-RON AMBER 46W

RED U-2 BIG LEAGUE 544R

**RED TER-RON LAURYN 190U**

RED TER-RON LAURYN 82P

S A V HARVESTOR 0338

S A V EMBLYNETTE 5483

RED TER-RON TOUCHDOWN 8S

RED TER-RON AMBER 28P

RED LCC MAJOR LEAGUE A502M

RED U-2 ANEXA 09E

RED SVR EXPLOSION 23M

RED TER-RON LAURYN 182M

**BW: 0.5 WW: 37 YW: 61 Milk: 22 Total Mat: 41**

- Raptor is the first of 3 red sons of the Continental bull. Continental has been so consistent for us and Circle G
- This calving ease bull has a very unique pedigree combined with overall balance, softness, tremendous shape, and hair coat
- His Big League dam is one we look forward to calving every year. Hadwins had a black/red carrier son that was one of her best



**\$6,000**  
**ELC CATTLE**



**67G**

**RED TER-RON  
MAGICIAN 67G**

HFX 67G 2105804

January 24 2019 TWIN CE \*\*

BW: 74 lbs Adj 205: 700 lbs

Adj 365: 1338 lbs

RED TOWAW INDEED 104H

RED BAR-E-L AB MAGIC MIKE 189Z

RED BAR-E-L MEG 85N

**RED BAR-E-L BETTER MAGIC 194D**

RED BAR-E-L GAMBLER 87X

RED BAR-E-L LARKABA 77A

RED LPH LARKABA 12T

RED SPRING CREEK HI HO 8K

RED ROYAL K-C DUKE 08R

RED ROYAL DUCHESS 08L

**RED TER-RON BRANDY 175Z**

RED LAZY MC DIVIDE 8J

RED TER-RON BRANDY 211M

RED TER-RON BRANDY 11J

**BW: 1.7 WW: 21 YW: 33 Milk: 19 Total Mat: 30**

- Magician is a bull that we have scored real high. He has a herd bull presence and look that commands your attention.
- Super soft ribbed, extra length, big bodied, and easy fleshing best describe this guy
- Duke mother is also the dam to the Lot 143F two year old bull that we used in our own herd last year
- Twin



**\$5,750**  
**COVERED WAGON  
CATTLE CO**

**70G**

**RED TER-RON  
GEMINI 70G**

RPAH 70G 2093632 January 26 2019 CE \*\*\*

BW: 70 lbs Adj 205: 642 lbs Adj 365: 1178 lbs

RED BAR-E-L ANTHEM 46A

**RED COMBEST JUGGERNAUT 1613D**

RED BAR-E-L MEG 85N

RED THAT'LL DO UNBELIEVABLE 6U

**RED TER-RON AMBER 133Z**

RED TER-RON AMBER 46W

RED WHEEL ALLIANCE 22U

RED BAR-E-L FRADO 209U

RED YY RED KNIGHT 640F

RED BAR-E-L MEG 035G

RED LAZY R C EL SENRO 40SP

RED THAT'LL DO MISS 57N

RED TER-RON TOUCHDOWN 8S

RED TER-RON AMBER 28P

**BW: 0.5 WW: 32 YW: 45 Milk: 18 Total Mat: 34**

- Gemini is a long bodied, calving ease sire that should work well on some heifers
- His rich, thick hair coat and overall presence will make 70G a good choice
- Dam raised a \$10000 maternal brother that sold to Blue Creek Farms at Vulcan AB. Another son sold to Letniak Farms
- Granddam is also the mother to Bazinga and Continental

Maternal Brother to 70G sold as Lot 9F in last year's sale



**\$5,500**  
**WARD'S RED**  
**ANGUS**



**72G**

## RED TER-RON CONTRABAND 72G

RPAH 72G 2093631 January 26 2019 CE \*\*  
BW: 80 lbs Adj 205: 746 lbs Adj 365: 1410 lbs

SAV INTERNATIONAL 2020  
**TER-RON CONTINENTAL 120D**  
RED TER-RON AMBER 46W

RED C-T KING KONG 1121  
**RED TER-RON MISSY 1C**  
RED RUST MISS 329A

SAV HARVESTOR 0338  
SAV EMBLYNETTE 5483  
RED TER-RON TOUCHDOWN 8S  
RED TER-RON AMBER 28P  
RED HXC CONQUEST 4405P  
RED C-T LASS 0920  
RED FCC RAMBO 502  
RED NSFR MTX W14

**BW: 0.6 WW: 43 YW: 66 Milk: 22 Total Mat: 44**

- Contraband is another son of the SAV International grandson, Continental. This sire group is phenomenal.
- Definitely a sale highlight, with his overall balance and muscle shape, athletic movement and solid foot structure
- Dam is a moderate framed cow that you wish you had a whole herd of
- Granddam is also the mother to Lot 26G

**73G**

## RED TER-RON CONVERSE 73G

HFX 73G 2093556 January 26 2019 CE \*  
BW: 87 lbs Adj 205: 771 lbs Adj 365: 1324 lbs

SAV INTERNATIONAL 2020  
**TER-RON CONTINENTAL 120D**  
RED TER-RON AMBER 46W

RED U-2 BIG LEAGUE 544R  
**RED TER-RON PAIGE 122U**  
RED TER-RON PAIGE 509P

SAV HARVESTOR 0338  
SAV EMBLYNETTE 5483  
RED TER-RON TOUCHDOWN 8S  
RED TER-RON AMBER 28P  
RED LCC MAJOR LEAGUE A502M  
RED U-2 ANEXA 09E  
RED TER-RON MAMBO 28K  
RED 77 MISS FREYR 509E

**BW: 2.8 WW: 46 YW: 66 Milk: 20 Total Mat: 43**

- Converse is another red hided Continental son that is hard not to get excited about
- Different on paper being a grandson of the famous SAV International 2020 bull
- Super attractive, with an abundance of depth, thickness, and a herd bull look. All this on a dark, near perfect foot structure
- Dam is a great producing Big League daughter who seems to do it year after year. A brother of 73G sold to Keith Wittmack of Consort
- Help yourself to one of the more intriguing bulls in the offering

**ELC CATTLE**



**74G**

## RED TER-RON UPKEEP 74G

HFX 74G 2093558 January 27 2019 CE \*\*  
BW: 83 lbs Adj 205: 710 lbs Adj 365: 1278 lbs

MRLA RELOAD 56C  
**RED MRLA UPLOAD 165E**  
RED MRLA MISS 4371B

RED U-2 RENOWN 193C  
**RED TER-RON GOLDIE 122E**  
RED TER-RON GOLDIE 240P

SAV RESOURCE 1441  
RED MRLA MISS 641Y  
RED MRLA TILT 80Z  
RED MRLA MISS 345X  
RED U-2 RECKONING 149A  
RED U-2 ENVIOUS 147X  
RED TER-RON MAMBO 28K  
RED TER-RON GOLDIE 240L

**BW: 4.3 WW: 43 YW: 69 Milk: 22 Total Mat: 44**

- Upkeep is another son of the outcross Upload bull
- Muscular made bull that is made for producers looking to reduce mature frame size and add body capacity and softness
- Dam is a moderate framed first calf Renown daughter that is a favourite of ours





**\$6,000**

**JON BLOOMQUIST**

**80G**

**RED TER-RON  
UPDATE 80G**

RPAH 80G 2093633 January 28 2019 CE \*\*  
BW: 72 lbs Adj 205: 678 lbs Adj 365: 1237 lbs

MRLA RELOAD 56C  
**RED MRLA UPLOAD 165E**  
RED MRLA MISS 4371B

RED U-2 REVERENCE 198C  
**TER-RON DIAMOND MIST 126E**  
TER-RON DIAMOND MIST 59C

S A V RESOURCE 1441  
RED MRLA MISS 641Y  
RED MRLA TILT 80Z  
RED MRLA MISS 345X  
RED U-2 RECKONING 149A  
RED U-2 LAKOTA 427Y  
K ADAMS APOLLO 3A  
RED TER-RON DIAMOND MIST 184W

**BW: 1.4 WW: 35 YW: 60 Milk: 24 Total Mat: 42**

- Update is a moderate framed, long bodied calving ease bull that will make tremendous females
- The Upload bull was a very consistent breeder for us and we feel that he is a tool that is taking us in the right direction. The replacement heifers as well as his heifers in the sale are very exciting
- 80G is out of a young first calf black/red carrier Reverence daughter from the Diamond Mist cow line

**81G**

**TER-RON  
CONGRESSMAN 81G**

HFX 81G 2093562 January 28 2019 CE \*\*  
BW: 82 lbs Adj 205: 813 lbs Adj 365: 1602 lbs

S A V INTERNATIONAL 2020  
**TER-RON CONTINENTAL 120D**  
RED TER-RON AMBER 46W

RED FEDDES BIG SKY R9  
**RED TER-RON GOLDIE 64A**  
RED TER-RON GOLDIE 240L

S A V HARVESTOR 0338  
S A V EMBLYNETTE 5483  
RED TER-RON TOUCHDOWN 8S  
RED TER-RON AMBER 28P  
RED BIEBER MAKE MIMI 7249  
RED FEDDES LAKINA 310  
RED LAZY MC DIVIDE 8J  
RED TER-RON GOLDIE 240J

**BW: 0.5 WW: 54 YW: 82 Milk: 23 Total Mat: 50**

- Congressman is an absolute stud!! He is a true curve bender that does it all.. calving ease, explosive performance, and has a stout muscle shape
- Dam (64A) is quickly becoming a favourite and will soon be moved to the donor pen. It doesn't seem to matter who we breed her to, she cranks out a good one
- Another top son of 64A is working in Provost for Daryl Dzurko
- This black/red carrier is a herd bull we rate very high

**\$6,500**

**ANDY NIEDERER**

**86G**

**TER-RON  
CONVICTION 86G**

HFX 86G 2093565 January 29 2019 CE \*\*\*  
BW: 78 lbs Adj 205: 692 lbs Adj 365: 1279 lbs

S A V INTERNATIONAL 2020  
**TER-RON CONTINENTAL 120D**  
RED TER-RON AMBER 46W

RED LAZY MC KINGMAN 16W  
**RED TER-RON GOLDIE 23Y**  
RED TER-RON GOLDIE 240L

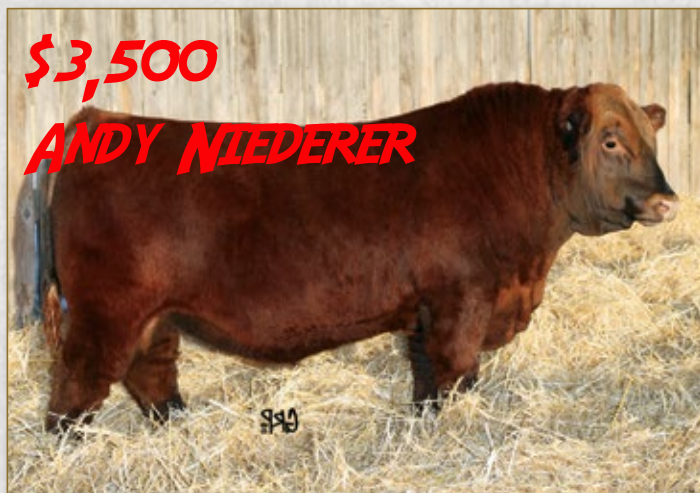
S A V HARVESTOR 0338  
S A V EMBLYNETTE 5483  
RED TER-RON TOUCHDOWN 8S  
RED TER-RON AMBER 28P  
RED RMJ REDMAN 1T  
RED LAZY MC MISS 67R  
RED LAZY MC DIVIDE 8J  
RED TER-RON GOLDIE 240J

**BW: 0.4 WW: 39 YW: 60 Milk: 19 Total Mat: 39**

- Conviction is another one of these good black/red carrier Continental sons. The consistency Continental has in his progeny is amazing
- 86G will work as a dual purpose bull that will provide calving ease while adding pounds and consistency to your calf crop
- Another top son of 23Y is working in the JAS Red Angus herd in Manitoba

**\$3,500**

**ANDY NIEDERER**



Maternal Brother to Lot 81G



**\$4,750**  
**KEN CROOKES**



**105G**

**RED TER-RON  
UPPER CLASS 105G**

RPAH 105G 2093641 February 06 2019 CE \*\*  
BW: 85 lbs Adj 205: 679 lbs Adj 365: 1343 lbs

MRLA RELOAD 56C  
**RED MRLA UPLOAD 165E**  
RED MRLA MISS 4371B

TER-RON PARK PLACE 18Y  
**TER-RON ALICE 32A**  
RED TER-RON ALICE 71P

SAV RESOURCE 1441  
RED MRLA MISS 641Y  
RED MRLA TILT 80Z  
RED MRLA MISS 345X  
HF TIGER 5T  
RED TER-RON GOLDIE 240L  
RED TER-RON TITANIC 011M  
RED TER-RON ALICE 07L

**BW: 1 WW: 29 YW: 55 Milk: 23 Total Mat: 38**

- Upper Class has outcross genetics with breed great SAV Resource on the top side and HF Tiger 5T on the bottom side
- This moderate bull is hairy, smooth designed, deep as they come, and very long bodied
- His black/red carrier mom is ideal. Moderate, great footed, and an impeccable udder attachment
- Other sons of 32A have sold to Byron Clarke, and Andy Niederer in Idaho

**RED TER-RON  
GROVER 106G**

HFX 106G 2093572 February 06 2019 CE \*\*  
BW: 84 lbs Adj 205: 632 lbs Adj 365: 1219 lbs

RED BAR-E-L ANTHEM 46A  
**RED COMBEST JUGGERNAUT 1613D**  
RED BAR-E-L MEG 85N

RED ROYAL K-C DUKE 08R  
**RED TER-RON CRESTA 160Z**  
RED TER-RON CRESTA 125U

RED WHEEL ALLIANCE 22U  
RED BAR-E-L FRADO 209U  
RED YY RED KNIGHT 640F  
RED BAR-E-L MEG 035G  
RED SPRING CREEK HI HO 8K  
RED ROYAL DUCHESS 08L  
RED U-2 BIG LEAGUE 544R  
RED TER-RON CRESTA 104P

**BW: 1.8 WW: 19 YW: 23 Milk: 21 Total Mat: 31**

- Very complete, correct made Juggernaut bull that has all of his sire's attributes. Loads of hair, sure footed, nice square hip shape, and a nice look
- The young Juggernauts we are calving are very milky, with square, ideal udders and foot structure that we all strive for
- Dam is a deep bodied, hairy, very good footed cow that continues to produce
- Full brother sold in last year's sale to long time customers Wildor Farms at Coronation

**\$5,000**

**WILDOR FARMS LTD**



Colossal - Sire of Lot 110 and 129

**\$4,250**  
**PAUL DOBINSON**



**110G**

**TER-RON  
COLONEL 110G**

KEEL 110G 2123265 February 07 2019 CE \*\*  
BW: 84 lbs Adj 205: 749 lbs Adj 365: 1219 lbs

EXAR CLASSEN 1422B  
**EF COLOSSAL 520**  
EXAR BLACKBIRD 5877

RED LAZY MC KINGMAN 16W  
**RED TER-RON ALICE 55A**  
RED TER-RON ALICE 31Y

DAMERON FIRST CLASS  
EXAR PRINCESS 2006  
SCHURRTOP MC 2500  
EXAR BLACKBIRD 4448  
RED RMJ REDMAN 1T  
RED LAZY MC MISS 67R  
RED TER-RON REALDEAL 01W  
RED TER-RON ALICE 7T

**BW: 2.2 WW: 44 YW: 69 Milk: 22 Total Mat: 43**

- Colonel is an ET calf out of the former Agribition Champion Colossal.
- 110G is an attractive chunk with added length and style to complement his easy fleshing ability
- Dam was successfully flushed by a couple of different sires and we will be retaining 3 gorgeous heifers to help Keely move forward with her herd



**\$5,250**

**KERRI-LYNN MCFAUL**



**113G**

**RED TER-RON  
RENO 113G**

HFX 113G 2130775 February 09 2019 CE \*  
BW: 92 lbs Adj 205: 723 lbs Adj 365: 1352 lbs

RED U-2 RECKONING 149A  
**RED U-2 RENOWN 193C**  
RED U-2 ENVIOUS 147X  
  
RED CROWFOOT 6253S  
**RED ML MISS LINETT 938W**  
RED BAR-X MISS LINETT 151K

RED U-2 RECON 192Y  
RED U-2 ANEXA 271Y  
RED U-2 DYNAMO 7021T  
RED U-2 ENVIOUS 216M  
CROWFOOT MAX 1743L  
CROWFOOT PIED PIPER 3859N  
RED BECKTON CLIPPER D225 JM  
RED BAR-X MISS LINETT 284D

**BW: 3.2 WW: 45 YW: 67 Milk: 20 Total Mat: 43**

- Reno is an ET full brother to the Freeway 134F bull that was bought in last year's sale for \$20000 by Brylor Ranch and On the Mark Cattle
- 113G is a cherry red herd bull that will command some attention sale day. Super dark foot, medium frame, deep, stout, and has a real presence to him
- Cow is about as phenotypically special as they come. She is owned by Circle G, but we were able to share a flush with Garth on this amazing cow



Red ML Miss Linett 938W  
Dam of Lot 113G

**RED TER-RON  
REVERE 123G**

**123G**

HFX 123G 2093579 February 11 2019 CE \*  
BW: 95 lbs Adj 205: 742 lbs Adj 365: 1296 lbs

RED U-2 RECKONING 149A  
**RED U-2 REVERENCE 198C**  
RED U-2 LAKOTA 427Y

RED FLYING K JULIAN 72Y  
**RED TER-RON LUCY 142A**  
RED TER-RON LUCY 140Y

RED U-2 RECON 192Y  
RED U-2 ANEXA 271Y  
RED BDL UPPOAR 124U  
RED FLYING K LAKOTA 104U  
RED TONGUERIVER JUBILATION  
RED FLYING K TAMMY 15W  
RED ROYAL K-C DUKE 08R  
RED TER-RON LUCY 117S

**BW: 2.7 WW: 35 YW: 65 Milk: 22 Total Mat: 40**

- Revere 123G is the type of bull that you will want to keep every daughter out of. Maternally bred to be a female producer.
- Square made, wide topped, and lots of muscle shape all combine to complement his angus character
- The 142A cow is a "front pasture" kind with a beautiful square udder



**\$6,000**

**SANDSTORM ANGUS**

**128G**

**RED TER-RON  
TORQUE 128G**

HFX 128G 2087480 February 13 2019 CE \*\*  
BW: 81 lbs Adj 205: 859 lbs Adj 365: 1376 lbs

MRLA RELOAD 56C  
**RED MRLA UPLOAD 165E**  
RED MRLA MISS 4371B

RED U-2 RENOWN 193C  
**RED TER-RON BRANDY 127E**  
RED TER-RON BRANDY 31B

SAV RESOURCE 1441  
RED MRLA MISS 641Y  
RED MRLA TILT 80Z  
RED MRLA MISS 345X  
RED U-2 RECKONING 149A  
RED U-2 ENVIOUS 147X  
RED TER-RON SOLO CUP 180Z  
RED TER-RON BRANDY 58U

**BW: 4.7 WW: 56 YW: 88 Milk: 24 Total Mat: 52**

- Torque is a very complete made, massive backed bull, sired by Upload that will add muscle and thickness
- His extra gentle disposition, awesome hair coat, depth and length will make him extra appealing
- 128G and his dam were shown successfully by Kasey this past fall and summer. They were Grand Champion Red Angus Pair at CJAA Showdown in Barriere in July and Grand Champion Red Angus Female at Lloydminster this past November.
- Dam is from the famous Brandy cow line that has been with us since the beginning

**\$11,000**

**JACK & SHANNON TRASK**



Lot 128 & his Dam  
Summer 2019



**NO SALE**



**129G**

**TER-RON  
COLOSSAL 129G**

KEEL 129G 2123313 February 14 2019 CE \*  
BW: 96 lbs Adj 205: 644 lbs Adj 365: 1215 lbs

EXAR CLASSEN 1422B  
**EF COLOSSAL 520**  
EXAR BLACKBIRD 5877

RED LAZY MC KINGMAN 16W  
**RED TER-RON ALICE 55A**  
RED TER-RON ALICE 31Y

DAMERON FIRST CLASS  
EXAR PRINCESS 2006  
SCHURRTOP MC 2500  
EXAR BLACKBIRD 4448  
RED RMJ REDMAN 1T  
RED LAZY MC MISS 67R  
RED TER-RON REALDEAL 01W  
RED TER-RON ALICE 7T

**BW: 2.2 WW: 44 YW: 69 Milk: 22 Total Mat: 43**

- Full ET brother to Lot 110G. These black/red carrier bulls are both moderate and stout, and have extra shape to their muscle
- It is hard to find a hole in 129G. He is a fault free bull that deserves a close look.
- We thought enough of this bull's mother to flush her!

**RED TER-RON  
GARNET 130G**

**130G**

HFX 130G 2093581 February 14 2019 CE \*  
BW: 100 lbs Adj 205: 664 lbs Adj 365: 1315 lbs

RED BAR-E-L ANTHEM 46A  
**RED COMBEST JUGGERNAUT 1613D**  
RED BAR-E-L MEG 85N

RED TER-RON REALDEAL 01W  
**RED TER-RON LAURYN 56Z**  
RED TER-RON LAURYN 018S

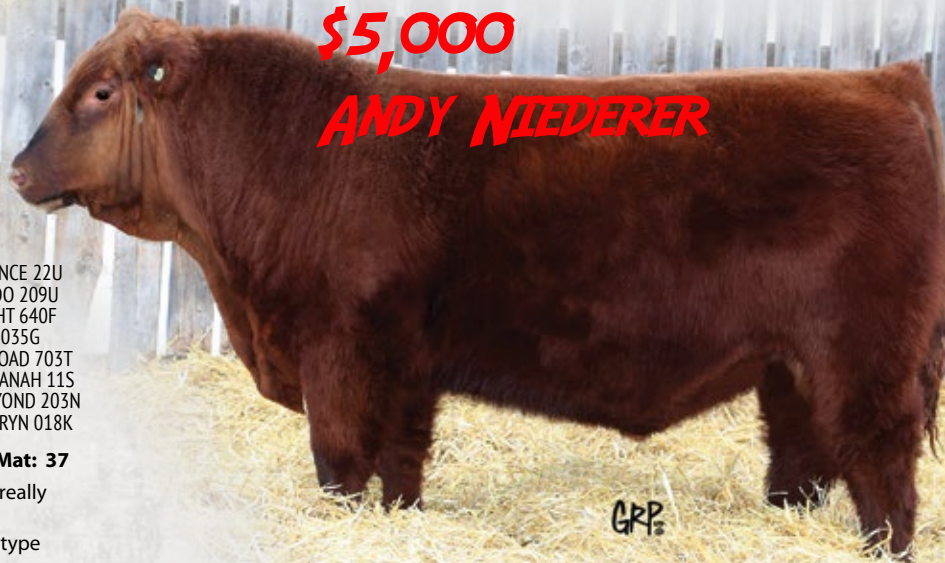
RED WHEEL ALLIANCE 22U  
RED BAR-E-L FRADO 209U  
RED YY RED KNIGHT 640F  
RED BAR-E-L MEG 035G  
RED TER-RON RELOAD 703T  
RED K ADAMS SAVANAH 11S  
RED STEWART BEYOND 203N  
RED TER-RON LAURYN 018K

**BW: 5.4 WW: 40 YW: 50 Milk: 17 Total Mat: 37**

- Garnet is a big hipped, wide based prospect that is really starting to become a bull you notice
- Dam is a model angus cow that is the front pasture type

**\$5,000**

**ANDY NIEDERER**



**\$7,000**

**WALSH FARMS**



**133G**

**RED TER-RON  
UPSTART 133G**

RPAH 133G 2093644 February 14 2019 CE \*\*\*  
BW: 77 lbs Adj 205: 753 lbs Adj 365: 1389 lbs

MRLA RELOAD 56C  
**RED MRLA UPLOAD 165E**  
RED MRLA MISS 4371B

RED TER-RON SHOCKER 10C  
**RED TER-RON OWYHEE 69E**  
RED LFE OWYHEE 608X

S AV RESOURCE 1441  
RED MRLA MISS 641Y  
RED MRLA TILT 80Z  
RED MRLA MISS 345X  
RED TER-RON PARKER 34A  
RED K ADAMS ZARIA 091Z  
RED 5L NORSEMAN KING 2291  
RED YY OWYHEE 702T

**BW: 1.1 WW: 48 YW: 74 Milk: 23 Total Mat: 47**

- Calving ease and maternal value come with Upstart 133G. We think you will be impressed with the consistency and uniformity of these Upload sons
- Out of a first calf Shocker daughter that has a flawless udder. Shocker is a feature sire in the Goad, Corona Creek and David Mohr herds



**\$3,250**

**BAR P LAZY A**



**140G**

**RED TER-RON  
GULLIVER 140G**

RPAH 140G 2093646 February 15 2019 CE \*  
BW: 88 lbs Adj 205: 786 lbs Adj 365: 1237 lbs

RED U-2 RECKONING 149A  
**RED U-2 REVERENCE 198C**  
RED U-2 LAKOTA 427Y

RED U-2 RECON 192Y  
RED U-2 ANEXA 271Y  
RED BDL UPROAR 124U  
RED FLYING K LAKOTA 104U  
TER-RON PARK PLACE 18Y  
RED TER-RON DIAMOND MIST 164Y  
RED LAZY MC DIVIDE 8J  
RED TER-RON MISSMAE 102K

RED TER-RON PARKER 34A  
**RED TER-RON MISS MAE 34C**  
RED TER-RON MISS MAE 102R

**BW: 3.1 WW: 50 YW: 79 Milk: 20 Total Mat: 45**

- Gulliver is a smooth fronted, nice headed bull that still maintains a nice shape when you appraise him from behind
- The Reverence bull is maybe as good of footed sire as we have ever used. His feet are impeccable, and he is passing it on to his progeny
- Dam is a big volume, correct made Parker daughter that has some jam

**141G**

**RED TER-RON  
UPTOWN 141G**

RPAH 141G 2093650 February 16 2019 CE \*\*\*  
BW: 77 lbs Adj 205: 785 lbs Adj 365: 1447 lbs

MRLA RELOAD 56C  
**RED MRLA UPLOAD 165E**  
RED MRLA MISS 4371B

RED TWIN HERITAGE HUSTLE 25A  
**RED TER-RON DIAMOND MIST 76E**  
RED TER-RON DIAMOND MIST 167B

SAV RESOURCE 1441  
RED MRLA MISS 641Y  
RED MRLA TILT 80Z  
RED MRLA MISS 345X  
RED HOWE HUSTLE 13X  
RED TWIN HERITAGE CHER 293S  
RED FLYING K JULIAN 72Y  
RED TER-RON DIAMOND MIST 164Y

**BW: 2 WW: 48 YW: 82 Milk: 24 Total Mat: 48**

- Uptown is another Upload x Diamond Mist combination that has worked very well for us
- 141G is a bull that will turn some heads on sale day with his unique presence, added thickness, overall dimension, and extra hair
- Dam is a maternal sister to Lot 23G, and the Formula bull that sold to Tophams in last year's sale
- One of the feature calving bulls in the offering

**\$11,000**

**LETNIAK FARMS**



**159G**

**RED TER-RON  
GAMBLER 159G**

RPAH 159G 2105812 February 24 2019 CE \*\*  
BW: 90 lbs Adj 205: 688 lbs Adj 365: 1361 lbs

RED BAR-E-L AB MAGIC MIKE 189Z  
**RED BAR-E-L BETTER MAGIC 194D**  
RED BAR-E-L LARKABA 77A

RED TOWAW INDEED 104H  
RED BAR-E-L MEG 85N  
RED BAR-E-L GAMBLER 87X  
RED LPH LARKABA 12T  
RED LIT CITADEL 812  
RED LIT PEARL 579  
RED U-2 BIG LEAGUE 544R  
RED TER-RON DIAMOND MIST 210U

RED TROTTERS STRONGHOLD 156  
**RED TER-RON DIAMOND MIST 75C**  
RED TER-RON DIAMOND MIST 53X

**BW: 3.8 WW: 36 YW: 57 Milk: 19 Total Mat: 37**

- Another one of these good Magic Mike sons that is full of hair, style, added thickness, and overall quality
- Out of a Diamond Mist mother that has really hit a home run with this young stud

**\$3,000**

**SPRUCEVILLE CATTLE CO**





**\$3,000**

**ANDY NIEDERER**



**162G**

**RED TER-RON  
MAGICAL 162G**

RPAH 162G 2105813 February 27 2019 CE \*  
BW: 98 lbs Adj 205: 744 lbs Adj 365: 1243 lbs

RED BAR-E-L AB MAGIC MIKE 189Z  
**RED BAR-E-L BETTER MAGIC 194D**  
RED BAR-E-L LARKABA 77A

RED TER-RON WICKED 53Y  
**RED TER-RON ALICE 137A**  
RED TER-RON ALICE 110U

RED TOWAW INDEED 104H  
RED BAR-E-L MEG 85N  
RED BAR-E-L GAMBLER 87X  
RED LPH LARKABA 12T  
RED TER-RON REALDEAL 01W  
RED TER-RON BOBBIE 93T  
RED BAR-E-L APPROVAL 4L  
RED TER-RON ALICE 7N

**BW: 5.2 WW: 37 YW: 59 Milk: 19 Total Mat: 38**

- Magical is a dark cherry red bull full of hair. He is about as soggy made as you can make them
- 162G is very good footed and should produce daughters that will make you drool. We think a lot of this interesting bull
- Dam is a big ribbed, wedge shaped cow that is a favourite with visitors

**RED TER-RON  
GOLAITH 169G**

RPAH 169G 2105814 March 03 2019 CE \*\*\*  
BW: 90 lbs Adj 205: 753 lbs Adj 365: 1190 lbs

RED BAR-E-L AB MAGIC MIKE 189Z  
**RED BAR-E-L BETTER MAGIC 194D**  
RED BAR-E-L LARKABA 77A

RED LAZY MC KINGMAN 16W  
**RED TER-RON DIAMOND MIST 100B**  
RED TER-RON DIAMOND MIST 105Y

RED TOWAW INDEED 104H  
RED BAR-E-L MEG 85N  
RED BAR-E-L GAMBLER 87X  
RED LPH LARKABA 12T  
RED RMJ REDMAN 1T  
RED LAZY MC MISS 67R  
RED TER-RON REALDEAL 01W  
BIG SKY DIAMOND MIST 290

**BW: 2.1 WW: 36 YW: 50 Milk: 23 Total Mat: 41**

- Another Better Magic son that is typical.... Great hair, smooth made, very correct and has a super cool look
- Dam is a moderate framed, big middled cow designed for efficiency

**169G**



**\$4,500**

**JON SHAW**

**170G**

**RED TER-RON  
GLITCH 170G**

HFX 170G 2093585 March 03 2019 CE \*\*\*  
BW: 82 lbs Adj 205: 708 lbs Adj 365: 1220 lbs

RED U-2 RECKONING 149A  
**RED U-2 REVERENCE 198C**  
RED U-2 LAKOTA 427Y

RED LAZY MC KINGMAN 16W  
**RED TER-RON HEATHER 71Y**  
RED TER-RON HEATHER 25W

RED U-2 RECON 192Y  
RED U-2 ANEXA 271Y  
RED BDL UPROAR 124U  
RED FLYING K LAKOTA 104U  
RED RMJ REDMAN 1T  
RED LAZY MC MISS 67R  
RED U-2 BIG LEAGUE 544R  
RED TER-RON HEATHER 22P

**BW: 0.2 WW: 25 YW: 41 Milk: 23 Total Mat: 36**

- Glitch is a really cool looking, moderate framed, calving ease bull with the ability to be a real cow maker
- Dam is a broody, beautiful made, medium framed cow that has raised a bull that has sold to Cliff & Shirley Ambler, Ken Roberts, and Hadwins

**\$4,000**

**TIE RAIL RANCH**

**175G**

**TER-RON  
MAGIC 175G**

HFX 175G 2129755 March 09 2019 CE \*  
BW: 98 lbs Adj 205: 780 lbs Adj 365: 1288 lbs

RED BAR-E-L AB MAGIC MIKE 189Z  
**RED BAR-E-L BETTER MAGIC 194D**  
RED BAR-E-L LARKABA 77A

RED TER-RON PARK PLACE 18Y  
**RED TER-RON HEATHER 155B**  
RED HIPS HEATHER 61U

RED TOWAW INDEED 104H  
RED BAR-E-L MEG 85N  
RED BAR-E-L GAMBLER 87X  
RED LPH LARKABA 12T  
HF TIGER 5T  
RED TER-RON GOLDIE 240L  
RED KBI WILD CARD 1024S  
RED RCR HEATHER 56H

**BW: 4.5 WW: 42 YW: 72 Milk: 23 Total Mat: 44**

- Younger bull in the sale, but doesn't give up any size or performance to the big boys in the offering
- Deep, hairy, athletic and a little more size to cover bigger cows
- Dam is a grand daughter of the great HF Tiger 5T

**\$3,000**  
**BRETT TWA**



# About our Extra Age Bulls

**The extra age bulls in the sale are not left over yearlings. They were either too young to make last year's sale or were used in our own program. There isn't a bull in the sale that we wouldn't use on our own cows.**

**OUT OF SALE**

**143F**

## RED TER-RON FITZ 143F

HFX 143F 2037371 February 20 2018 CE \*  
BW: 81 lbs Adj 205: 701 lbs Adj 365: 1173 lbs

RED U-2 RECKONING 149A  
**RED U-2 RENOWN 193C**  
RED U-2 ENVIOUS 147X

RED ROYAL K-C DUKE 08R  
**RED TER-RON BRANDY 175Z**  
RED TER-RON BRANDY 211M

RED U-2 RECON 192Y  
RED U-2 ANEXA 271Y  
RED U-2 DYNAMO 7021T  
RED U-2 ENVIOUS 216M  
RED SPRING CREEK HI HO 8K  
RED ROYAL DUCHESS 08L  
RED LAZY MC DIVIDE 8J  
RED TER-RON BRANDY 11J

**BW: 3.5 WW: 26 YW: 37 Milk: 16 Total Mat: 29**

- Fitz is a maternal brother to the Lot 67G bull
- We really appreciate the softness of middle this bull possesses. A real power individual that is super balanced throughout, has a big hip in him and very sound footed, with lots of depth of heel
- We used 143F on our pasture exposure, so you can see what you think of this solid bull
- Twin

**\$5,000**

**HADWIN CATTLE CO**

**187F**

## RED TER-RON HUSTLE 187F

HFX 187F 2037388 March 25 2018 CE \*\*  
BW: 85 lbs Adj 205: 717 lbs Adj 365: lbs

RED HOWE HUSTLE 13X  
**RED TWIN HERITAGE HUSTLE 25A**  
RED TWIN HERITAGE CHER 293S

RED U-2 BIG LEAGUE 544R  
**RED TER-RON MONIQUE 173A**  
RED DIAMOND T MONIQUE 9906

RED LAZY MC HUSTLE 18T  
RED HOWE MS BELLA 4N  
RED GEIS ZAMA PINE 123'03  
RED TWIN HERITAGE CHER 160P  
RED LCC MAJOR LEAGUE A502M  
RED U-2 ANEXA 09E  
RED TER-RON MAMBO 28K  
RED DIAMOND MONIQUE 70'02

**BW: 2.1 WW: 26 YW: 47 Milk: 21 Total Mat: 34**

- 187F is a real complete, smooth made bull with lots of eye appeal and soundness. This bull can really get out and cover the ground
- He was used on some heifers in our own herd, so by bull sale time we will know how they worked out
- Dam is a moderate sized female that we really have a lot of time for



**\$5,000****SPRUCEVILLE CATTLE CO****198F****RED TER-RON  
PARK PLACE 198F**HFX 198F 2130560 April 18 2018 CE \*  
BW: 91 lbs Adj 205: 745 lbs Adj 365: lbsHF TIGER 5T  
**TER-RON PARK PLACE 18Y**  
RED TER-RON GOLDIE 240LRED TER-RON REALDEAL 01W  
**RED TER-RON LAURYN 56Y**  
RED TER-RON LAURYN 918NHF KODIAK 5R  
HF ECHO 84R  
RED LAZY MC DIVIDE 8J  
RED TER-RON GOLDIE 240J  
RED TER-RON RELOAD 703T  
RED K ADAMS SAVANAH 11S  
RED TER-RON CINCH 910L  
RED TER-RON LAURYN 918J**BW: 1.6 WW: 38 YW: 64 Milk: 15 Total Mat: 34**

- 198F is a red hided Park Place 18Y son that is moderate framed, has lots of fore rib, body capacity and stoutness over the top
- The 56Y cow is a model angus cow that is tremendous uddered, has quality feet, and is made to have longevity. Another top son of 56Y has sold to Andy Niederer in Idaho
- Dam is also the granddam to the Lot 6G bull

**201F****RED TER-RON  
PARK PLACE 201F**HFX 201F 2130561 May 12 2018 CE \*  
BW: 84 lbs Adj 205: 736 lbs Adj 365: lbsHF TIGER 5T  
**TER-RON PARK PLACE 18Y**  
RED TER-RON GOLDIE 240LRED TER-RON REALDEAL 01W  
**RED TER-RON FREYJA 173Z**  
RED WARD'S FREYJA 56NHF KODIAK 5R  
HF ECHO 84R  
RED LAZY MC DIVIDE 8J  
RED TER-RON GOLDIE 240J  
RED TER-RON RELOAD 703T  
RED K ADAMS SAVANAH 11S  
RED HANDFORD DYNAMITE 136L  
RED WARD'S FREYJA 49J**BW: 1.3 WW: 35 YW: 58 Milk: 16 Total Mat: 34**

- Another Park Place son that is cherry red in colour, masculine, deep ribbed, stout hipped, and sound made
- You'll like the genetic make up of this bull with two of the best bulls ever used here... Park Place and Real Deal
- Maternal brother was a past \$10000 seller to Blairs.Ag

**\$4,500****JOHN  
SCHMIDT**

Sire to 198 &amp; 201



Maternal Brother to 201F Sold to Blairs.Ag



# REFERENCE SIRES

Note EPD's cannot be compared between  
Angus and Simmental Cattle



## WHEATLAND BULL 7134E (AKA ACCLAIM)

LER 7134E 1221455 March 07 2017 CE  
BW: 89 lbs Adj 205: 907 lbs Adj 365: 1523 lbs

WS PILGRIM H182U  
**CCLT ALLIANCE 91C**  
BROOKS SHINIA 1A

CNS DREAM ON L186  
WS MARLA 276M  
BB BARACK 1017T  
BROOKS RED HOT Y17  
WHEATLAND BULL 680S  
WHEATLAND LADY 752 T

WHEATLAND PREDATOR 922W  
**WHEATLAND LADY 2070Z**  
ANGUS/ANGUS

**BW: 2 WW: 66 YW: 94 Milk: 16 Total Mat: 49**

- Acclaim was purchased out of the 2018 Wheatland sale for \$22000 with Circle G
- Long fronted, stout made bull, great hair coat and with a super proud look
- First sons are impressive!!
- Homo polled, 3/4 % simmental
- Owned with Circle G Simmentals

## RUST RIO GRANDE 7022 ET

BOHR 22E 1240779 February 28 2017 CE  
BW: NA Adj 205: NA Adj 365: NA

TNT 90 PROOF Z401  
**WFL WESTCOTT 24C**  
WFL SWEET LICIOUS 1044X

WHEATLAND STOUT 930W  
**RF CERTAINLY FLIRTIN 202Z**  
RF FLIRTIN FOR CERTIN 37U

DCR MR MOON SHINE X102  
TNT MISS S17  
R PLUS REDGE 8018U  
WFL RED LICIOUS  
WHEATLAND BULL 680S  
WHEATLAND LADY 737 T  
LFE STREET LEGAL 510S  
TLG FLIRTIN WITH YOU

**BW: 4.9 WW: 83 YW: 127 Milk: 20 Total Mat: 61**

- Rio Grande is the \$60000 high selling bull who incorporates the great WFL Westcott bull with the breed leading RF Certainly Flirtin' 2022 cow
- We used Rio by AI to infuse these breed leading genetics into our herd
- Consistent, modest birthweights, and a real balanced look and presence to his progeny
- Homo polled



## WLB GO DADDY 52Z 368D

WLB 368D BPG1171897 February 2 2016  
BW: 89 lbs Adj 205: 766 lbs Adj 365: 1454 lbs

WHEATLAND PREDATOR 922W  
**MRL EL TIGRE 52Z**  
MRL MISS 836W

HARVIE JDF WALLBANGER111X  
**BLACKSAND TESS 56A**  
SPRINGCREEK BLK TESS 25T

WHEATLAND BULL 680S  
WHEATLAND LADY 752 T  
MRL BLACK BEAR 79S  
MRL MISS 828S  
SHS ENTICER P1B  
JDF PEPSI 61U  
SPRINGCREEK TANK 63P  
SPRINGCREEK LINNE 71P

**BW: 2 WW: 74 YW: 110 Milk: 18 Total Mat: 55**

- Lead off bull in the 2017 WLB Sale that was purchased jointly with Circle G
- Go Daddy is moderate framed with a massive rib shape, extra depth of body, super sound and structurally correct
- First set of sons are very consistent and the daughters look very impressive
- Homo Polled and Hetero Black
- Owned with Circle G Simmentals & Angus





**\$7,000**

**WALSH FARMS**



**903G**

**TER-RON  
RIO 903G**

HFX 903G 1285917

January 11 2019 CE \*\*\*

BW: 76 lbs Adj 205: 702 lbs

Adj 365: 1360 lbs

TNT 90 PROOF Z401

WFL WESTCOTT 24C

WFL SWEET LICIOUS 1044X

**RUST RIO GRANDE 7022 ET**

WHEATLAND STOUT 930W

RF CERTAINLY FLIRTIN 202Z

RF FLIRTIN FOR CERTIN 37U

MR CCF VISION

SKORS VISION 138C

SKORS RADIANT 62A

**TER-RON JOLETTE 30E**

SKORS ENTICER 171Z

TER-RON JOLETTE 430B

CG BLACK JOLETTE 230X

**BW: 3.9 WW: 76 YW: 117 Milk: 21 Total Mat: 58**

- We start off the Simmental Division with a red Rio Grande bull that we are high on
- He has so much style, overall mass, tons of hair, super deep ribbed, and all this in a 76 lb BW
- The maternal strength you will get with the Rio Grande's will be hard to beat... sired by Westcott and the great Certainly Flirtin' 2022 as his dam
- Heifer Bull Deluxe!!!

**\$4,000**

**CARTER RENSCHLER**



**905G**

**TER-RON  
RIO 905G**

HFX 905G 1286894 January 16 2019 CE \*\*\*

BW: 67 lbs Adj 205: 785 lbs Adj 365: 1457 lbs

WFL WESTCOTT 24C

**RUST RIO GRANDE 7022 ET**

RF CERTAINLY FLIRTIN 202Z

TER-RON SPECIALIST 418B

**TER-RON PHYLCIA 077E**

TER-RON PHYLCIA 577C

TNT 90 PROOF Z401

WFL SWEET LICIOUS 1044X

WHEATLAND STOUT 930W

RF FLIRTIN FOR CERTIN 37U

IPU RED SPECIALIST 70T

MAJESTIC MISS CANDACE 18Y

BBF1 COMBUSTIBLE

MOOSE CREEK MISS LABEL

**BW: 2.5 WW: 69 YW: 104 Milk: 24 Total Mat: 58**

- Another low birth Rio Grande son that is blaze faced and has a very nice look to him
- Balance would be a word to sum up this bull, as he is very complete in his make up... stout made, yet has a smooth, clean shoulder
- This guy will have admirers sale day and would be a great choice for your heifers



**\$3,250**

**JARRETT BATT**



**911G**

**TER-RON  
RIO 911G**

1286896 February 01 2019 CE \*\*\*

BW: 83 lbs Adj 205: 668 lbs Adj 365: 1274 lbs

WFL WESTCOTT 24C  
**RUST RIO GRANDE 7022 ET**  
RF CERTAINLY FLIRTIN 202Z

TNT 90 PROOF Z401  
WFL SWEET LICIOUS 1044X  
WHEATLAND STOUT 930W  
RF FLIRTIN FOR CERTIN 37U

WHEATLAND FINAL AFFAIR  
**TER-RON JOLLETTE 730E**  
CG BLACK JOLETTE 230X

STF ROYAL AFFAIR Z44M  
WHEATLAND LADY 212Z  
SPRINGCREEK RED TANK 55S  
CG BLACK JOLETTE 341N

**BW: 4.7 WW: 76 YW: 113 Milk: 20 Total Mat: 58**

- 911G is another calving ease bull that will work well on heifers
- You will admire the balance, quiet disposition, hair, and structural correctness the Rio Grande bulls have
- Dam is a first calf Final Affair daughter that is super square uddered and has a real deep, wedge shaped body to her

**TER-RON  
RIO 912G**

**912G**

HFX 912G 1286918 February 01 2019 CE \*\*\*

BW: 72 lbs Adj 205: 695 lbs Adj 365: 1314 lbs

WFL WESTCOTT 24C  
**RUST RIO GRANDE 7022 ET**  
RF CERTAINLY FLIRTIN 202Z

TNT 90 PROOF Z401  
WFL SWEET LICIOUS 1044X  
WHEATLAND STOUT 930W  
RF FLIRTIN FOR CERTIN 37U

RF DOUBLE UP 37W  
**TER-RON MS 354A**  
DEEG MS 54Y

SS EBONYS INTUITION 802  
TLG FLIRTIN WITH YOU  
CMS ULTOR 822U  
RDD MS 35T

**BW: 3.7 WW: 76 YW: 116 Milk: 23 Total Mat: 61**

- Very cool looking Rio Grande son that catches your eye as soon as you walk into the pen
- 912G combines calving ease from both his sire and his dam
- Soft sided, sure footed bull with style to burn. This bull just continues to get better every day
- Dam is a gorgeous uddered Double Up daughter that we wish we had a whole herd of
- Maternal brother sells as Lot 806F



**\$5,750**

**BRAD & KATE  
BRENCHLEY**







**916G**

## TER-RON ACCLAIM 916G

HFX 916G 1285906 February 14 2019 CE \*  
BW: 83 lbs Adj 205: 743 lbs Adj 365: 1271 lbs

CCLT ALLIANCE 91C  
**WHEATLAND BULL 7134E**  
WHEATLAND LADY 2070Z

TER-RON SPECIALIST 418B  
**TER-RON DEB 022D**  
TER-RON DEB 22B

WS PILGRIM H182U  
BROOKS SHINIA 1A  
WHEATLAND PREDATOR 922W  
ANGUS/ANGUS  
IPU RED SPECIALIST 70T  
MAJESTIC MISS CANDACE 18Y  
SKORS ENTICER 171Z  
D BAR C DEB 22X

**BW: 0.8 WW: 70 YW: 102 Milk: 23 Total Mat: 58**

- Our first son on offer out of our \$22000 Wheatland Acclaim bull
- Real easy fleshing bull, who is soggy made and has a round muscle expression that carries right down into his leg
- Modest BW with ample performance in this real hairy bull

## TER-RON GO DADDY 918G

HFX 918G 1286909 February 17 2019 CE \*  
BW: 102 lbs Adj 205: 791 lbs Adj 365: 1197 lbs

MRL EL TIGRE 52Z  
**WLB GO DADDY 52Z 368D**  
BLACKSAND TESS 56A

LFE TOMCAT 389X  
**WFL LICIOUS'S DREAM 2010Z**  
WFL LICIOUS SUE 1047X

WHEATLAND PREDATOR 922W  
MRL MISS 836W \ HP-HOP  
HARVIE JDF WALLBANGER111X  
SPRINGCREEK BLK TESS 25T  
LFE DREAMING RED 503S  
LFE RS AMBER 198T  
R PLUS REDGE 8018U  
WFL RED LICIOUS

**BW: 4.4 WW: 77 YW: 107 Milk: 19 Total Mat: 57**

- The only Go Daddy son on offer this year
- A Go Daddy son was our high selling Simmental bull for \$10000 to Brimacombe in last year's sale
- We are about to calve out our first Go Daddy daughters and they look exactly what we had hoped for. Easy fleshing, sound footed and real nice udders
- This guy will be highly maternal if you are looking to keep replacements



**918G**



**925G**

## TER-RON ACCLAIM 925G

HFX 925G 1285676 February 28 2019 CE \*  
BW: 93 lbs Adj 205: 754 lbs Adj 365: 1319 lbs

CCLT ALLIANCE 91C  
**WHEATLAND BULL 7134E**  
WHEATLAND LADY 2070Z

RF DOUBLE UP 37W  
**TER-RON MISS 570C**  
TER-RON PAIGE 70Z

WS PILGRIM H182U  
BROOKS SHINIA 1A  
WHEATLAND PREDATOR 922W  
ANGUS/ANGUS  
SS EBONYS INTUITION 80Z  
TLG FLIRTIN WITH YOU  
TRIPLE C SINGLETARY S3H  
STF/HR MISS X126

**BW: 1.3 WW: 67 YW: 101 Milk: 19 Total Mat: 53**

- Another Acclaim son that is very well balanced, with a wide pin set, lots of length and hair, and a real strong foot
- Dam is another beautiful Double Up daughter that is feminine, has a neat udder, and looks like she will be reliable for years to come



**\$4,500**

**ELLWOOD FARMS**



**929G**

**TER-RON  
ACCLAIM 929G**

HFX 929G 1286925 March 05 2019 CE \*\*  
BW: 89 lbs Adj 205: 771 lbs Adj 365: 1293 lbs

CCLT ALLIANCE 91C  
**WHEATLAND BULL 7134E**  
WHEATLAND LADY 2070Z

RF DOUBLE UP 37W  
**TER-RON BLACK LADY 554C**  
MADER BLACK LADY 54Z

WS PILGRIM H182U  
BROOKS SHINIA 1A  
WHEATLAND PREDATOR 922W  
ANGUS/ANGUS  
SS EBONY'S INTUITION 802  
TLG FLIRTIN WITH YOU  
MADER P CAST IRON 49X  
DOWNHILL BLACK LADY 12W

**BW: 3.2 WW: 75 YW: 111 Milk: 19 Total Mat: 57**

- The 7134E x Double Up combination has really worked well for us
- Long made, smooth designed, sound bodied and made to travel
- We really think the Acclaim daughters will be his greatest attribute

**806F**

**TER-RON  
GO DADDY 806F**

HFX 806F 1247910 January 26 2018 CE \*\*  
BW: 82 lbs Adj 205: 711 lbs Adj 365: 1260 lbs

MRL EL TIGRE 52Z  
**WLB GO DADDY 52Z 368D**  
BLACKSAND TESS 56A

RF DOUBLE UP 37W  
**TER-RON MS 354A**  
DEEG MS 54Y

WHEATLAND PREDATOR 922W  
MRL MISS 836W \ HP-HOP  
HARVIE JDF WALLBANGER111X  
SPRINGCREEK BLK TESS 25T  
SS EBONY'S INTUITION 802  
TLG FLIRTIN WITH YOU  
CMS ULTOR 822U  
RDD MS 35T

**BW: 1.7 WW: 73 YW: 109 Milk: 21 Total Mat: 57**

- 806F was used for pasture clean up on one of our groups of cows
- Maternal brother sells as Lot 912G
- We really like the completeness and balance this bull offers
- You'll want to keep every daughter this bull produces
- Dam is a perfect uddered cow that produces year after year

**\$3,500**

**PAUL DOBIMSON**







About our  
*Heifers*

*Once again the heifers in the sale are a select group chosen from some of our top cow families. These heifers are sisters to the replacements we have kept ourselves. Just like the bulls... there isn't a heifer in the group that we wouldn't keep to move our own program forward.*

*We are constantly working on improving our herd, with emphasis on udders and foot quality, along with strong maternal traits. We have seen the mother of every bull we use.*

*The females have been palpated for reproductive soundness and we guarantee them to be breeders. Like the bulls, we would like to be the first to know if you have a problem. The heifers are also on a complete herd health vaccination program.*

*Buy with Confidence . . .*



**\$2,250**

**REVERSE GC ANGUS**



**3G**

**RED TER-RON  
DIAMOND MIST 3G**

RPAH 3G 2093617 January 07 2019 CE

BW: 56 lbs Adj 205: 1bs Adj 365: 967 lbs

MRLA RELOAD 56C  
**RED MRLA UPLOAD 165E**  
RED MRLA MISS 4371B

RED U-2 REVERENCE 198C  
**RED TER-RON DIAMOND MIST 2E**  
RED TER-RON DIAMOND MIST 83B

S A V RESOURCE 1441  
RED MRLA MISS 641Y  
RED MRLA TILT 80Z  
RED MRLA MISS 345X  
RED U-2 RECKONING 149A  
RED U-2 LAKOTA 427Y  
RED SIX MILE SURE SHOT 195Z  
RED TER-RON DIAMOND MIST 191Z

**BW: 0.3 WW: 32 YW: 54 Milk: 24 Total Mat: 40**

- Diamond Mist is the name of a great cow family at TerRon Farms
- 3G is a beautifully made Upload daughter that is sweet fronted, long bodied, great footed and with the predictability of her pedigree, she should go on to make a great cow
- Any chance you get to add a Diamond Mist to your herd, do it!

**12G**

**RED TER-RON  
MAGGIE 12G**

HFX 12G 2093525 January 09 2019 CE

BW: 67 lbs Adj 205: 598 lbs Adj 365: 899 lbs

MRLA RELOAD 56C  
**RED MRLA UPLOAD 165E**  
RED MRLA MISS 4371B

RED TER-RON SANTANA 73C  
**RED TER-RON MAGGIE 81E**  
RED TER-RON MAGGIE 28Z

S A V RESOURCE 1441  
RED MRLA MISS 641Y  
RED MRLA TILT 80Z  
RED MRLA MISS 345X  
RED TER-RON PARKER 34A  
RED TER-RON BRANDY 162Y  
RED ROYAL K-C DUKE 08R  
RED TER-RON MAGGIE 310N

**BW: 1.2 WW: 35 YW: 62 Milk: 20 Total Mat: 38**

- Maggie is an extremely deep bodied, hairy, soggy made female that will be a herd bull producer
- Her dam is a first calf Santana daughter who was a previous high seller in our sale to Blairs.Ag and Santiago Debernardi
- The 81E cow is flawless in her udder structure with very nice spacing and short teats

**\$2,500**

**CAM MORRIS**



**\$4,250**

**REVERSE GC ANGUS**



**19G**

**RED TER-RON  
RACHEL 19G**

HFX 19G 2093530 January 11 2019 CE

BW: 57 lbs Adj 205: 614 lbs Adj 365: 898 lbs

MRLA RELOAD 56C  
**RED MRLA UPLOAD 165E**  
RED MRLA MISS 4371B

RED U-2 REVERENCE 198C  
**RED TER-RON RACHEL 1E**  
TER-RON RACHEL 146B

S A V RESOURCE 1441  
RED MRLA MISS 641Y  
RED MRLA TILT 80Z  
RED MRLA MISS 345X  
RED U-2 RECKONING 149A  
RED U-2 LAKOTA 427Y  
TER-RON PARK PLACE 18Y  
RED TER-RON RACHEL 815R

**BW: -0.7 WW: 33 YW: 59 Milk: 23 Total Mat: 40**

- Rachel is a very complete, attractive female with a super solid pedigree
- Very complete in her lines, hairy, sound footed, and very free moving
- Dam is a solid Reverence daughter who is out of a very nice Park Place daughter



**\$3,500**

**COMBEST RED ANGUS**



**22G**

**RED TER-RON  
MAGGIE 22G**

HFX 22G 2093534 January 12 2019 CE  
BW: 83 lbs Adj 205: 552 lbs Adj 365: 995 lbs

RED BAR-E-L ANTHEM 46A  
**RED COMBEST JUGGERNAUT 1613D**  
RED BAR-E-L MEG 85N

RED JD LANN EVOLUTION 119S  
**RED TER-RON MAGGIE 152X**  
RED DOUBLE C MAGGIE 770M

RED WHEEL ALLIANCE 22U  
RED BAR-E-L FRADO 209U  
RED YY RED KNIGHT 640F  
RED BAR-E-L MEG 035G  
RED BRYLOR NEW TREND 22D  
RED LAZY M VAQUERO 14J  
RED DOUBLE C PRINCE 329J  
RED DOUBLE C LA MAGGI 21G

**BW: 3.3 WW: 36 YW: 60 Milk: 21 Total Mat: 39**

- Powerful female that is huge ribbed. As her picture shows, she has tons of dimension and muscle mass combined with a lovely, angular front, and great hair
- We have calved our first Juggernauts and they are very milky with great udder structure and attachment
- Sale feature here!

**RED TER-RON  
ALICE 42G**

**42G**

RPAH 42G 2093625 January 19 2019 CE  
BW: 60 lbs Adj 205: 619 lbs Adj 365: 1046 lbs

MRLA RELOAD 56C  
**RED MRLA UPLOAD 165E**  
RED MRLA MISS 4371B

RED U-2 RENOWN 193C  
**RED TER-RON ALICE 87E**  
RED TER-RON ALICE 71C

S A V RESOURCE 1441  
RED MRLA MISS 641Y  
RED MRLA TILT 80Z  
RED MRLA MISS 345X  
RED U-2 RECKONING 149A  
RED U-2 ENVIOUS 147X  
RED TER-RON PARKER 34A  
RED TER-RON ALICE 7T

**BW: 2 WW: 41 YW: 66 Milk: 22 Total Mat: 43**

- Here is a female that is very complete in her make up, has lots of rib shape, and is very solid footed
- Dam is a first calf Renown daughter that has done a very good job on her first try
- The 87E cow is moderate, but sure can produce

**\$2,750**

**MCGOWAN FARMS**



Bar E-L Meg 169Z – Maternal Sister to Juggernaut, Sire of Lot 22G  
Owned by Six Mile Ranch

**\$2,500**

**WALLGREN FARMS**



**44G**

**RED TER-RON  
CRESTA 44G**

HFX 44G 2093545 January 18 2019 CE  
BW: 64 lbs Adj 205: 615 lbs Adj 365: 967 lbs

RED U-2 RECKONING 149A  
**RED U-2 REVERENCE 198C**  
RED U-2 LAKOTA 427Y

RED TER-RON SANTANA 73C  
**RED TER-RON CRESTA 88E**  
RED TER-RON CRESTA 125W

RED U-2 RECON 192Y  
RED U-2 ANEXA 271Y  
RED BDL UPROAR 124U  
RED FLYING K LAKOTA 104U  
RED TER-RON PARKER 34A  
RED TER-RON BRANDY 162Y  
RED TOP PRECISION 52S  
TER-RON CRESTA 116S

**BW: 0.5 WW: 34 YW: 55 Milk: 21 Total Mat: 38**

- Reverence female out of another first calf Santana daughter
- Cresta has extra rib shape, very solid middled, and is very capacious
- When you analyze the picture of this female, you really see how she would move your cowherd forward



**\$2,250**

**KERRI LYNN MCFAUL**



**47G**

**RED TER-RON  
ALICE 47G**

RPAH 47G 2093624 January 19 2019 CE  
BW: 60 lbs Adj 205: 578 lbs Adj 365: 930 lbs

MRLA RELOAD 56C  
**RED MRLA UPLOAD 165E**  
RED MRLA MISS 4371B

RED U-2 REVERENCE 198C  
**RED TER-RON ALICE 163E**  
RED TER-RON ALICE 137A

S A V RESOURCE 1441  
RED MRLA MISS 641Y  
RED MRLA TILT 80Z  
RED MRLA MISS 345X  
RED U-2 RECKONING 149A  
RED U-2 LAKOTA 427Y  
RED TER-RON WICKED 53Y  
RED TER-RON ALICE 110U

**BW: 2.3 WW: 33 YW: 60 Milk: 22 Total Mat: 38**

- You can always count on the Alice cow family to raise solid, predictable cattle
- We are thrilled with how Upload bred both sexes and can't wait to start calving the daughters
- Easy fleshing, moderate framed heifer that will catch your eye sale day

**RED TER-RON  
SANDY 51G**

**51G**

RPAH 51G 2093628 January 20 2019 CE  
BW: 84 lbs Adj 205: 693 lbs Adj 365: 1003 lbs

MRLA RELOAD 56C  
**RED MRLA UPLOAD 165E**  
RED MRLA MISS 4371B

RED TER-RON BAZINGA 13B  
**RED TER-RON SANDY 34E**  
RED BLAIRS SANDY 201X

S A V RESOURCE 1441  
RED MRLA MISS 641Y  
RED MRLA TILT 80Z  
RED MRLA MISS 345X  
TER-RON PARK PLACE 18Y  
RED TER-RON AMBER 46W  
RED CORNER CREEK CASH 2R  
RED JCC SANDY 113N

**BW: 4.6 WW: 51 YW: 82 Milk: 23 Total Mat: 49**

- Sandy is a heifer that has added substance, overall mass, lots of performance, but is still nice fronted
- She is the type of heifer that will raise herd bulls
- Dam is a 2 year old Bazinga daughter that is a huge bodied female. She is very angular and has a gorgeous udder attachment



**\$4,750**

**KERRI LYNN MCFAUL**

**59G**

**RED TER-RON  
LAURYN 59G**

HFX 59G 2093549 January 22 2019 CE  
BW: 72 lbs Adj 205: 710 lbs Adj 365: 1025 lbs

MRLA RELOAD 56C  
**RED MRLA UPLOAD 165E**  
RED MRLA MISS 4371B

RED U-2 REVERENCE 198C  
**RED TER-RON LAURYN 51E**  
RED TER-RON LAURYN 178C

S A V RESOURCE 1441  
RED MRLA MISS 641Y  
RED MRLA TILT 80Z  
RED MRLA MISS 345X  
RED U-2 RECKONING 149A  
RED U-2 LAKOTA 427Y  
RED SIX MILE SURE SHOT 195Z  
RED TER-RON LAURYN 56Y

**BW: 2.8 WW: 46 YW: 77 Milk: 25 Total Mat: 48**

- The Upload x Reverence combination really worked well for us
- The 51E cow is one of our favourite two year olds and we expect big things out of her as she matures
- The Upload bull sure made his progeny easy fleshing, a trait we really admire in this nicely designed female

**\$3,250**

**REVERSE GC ANGUS**





63G

## RED TER-RON GOLDIE 63G

HFX 63G 2093552 January 23 2019 CE  
BW: 70 lbs Adj 205: 561 lbs Adj 365: 773 lbs

RED BAR-E-L ANTHEM 46A  
**RED COMBEST JUGGERNAUT 1613D**  
RED BAR-E-L MEG 85N

RED SIX MILE HARD CORE 471Y  
**RED TER-RON GOLDIE 111B**  
RED TER-RON GOLDIE 23Y

RED WHEEL ALLIANCE 22U  
RED BAR-E-L FRADO 209U  
RED YY RED KNIGHT 640F  
RED BAR-E-L MEG 035G  
RED SIX MILE WIN-CHESTER 745W  
RED SIX MILE FANNY 186T  
RED LAZY MC KINGMAN 16W  
RED TER-RON GOLDIE 240L

**BW: 0.2 WW: 34 YW: 47 Milk: 25 Total Mat: 42**

- The Goldies are our favourites in our herd and have been for a very long time.
- This heifer traces back to the feature Showdown 9G bull that we have huge expectations for.
- The only spot in the herd is left and here is your opportunity to be a part of it

**\$3,250**

**ADAIR RANCH**

64G

## RED TER-RON BRANDY 64G

HFX 64G 2093553 January 23 2019 CE  
BW: 68 lbs Adj 205: 529 lbs Adj 365: 944 lbs

RED U-2 RECKONING 149A  
**RED U-2 REVERENCE 198C**  
RED U-2 LAKOTA 427Y

RED THAT'LL DO UNBELIEVABLE 6U  
**RED TER-RON BRANDY 5X**  
RED TER-RON BRANDY 211M

RED U-2 RECON 192Y  
RED U-2 ANEXA 271Y  
RED BDL UPROAR 124U  
RED FLYING K LAKOTA 104U  
RED LAZY R C EL SENRO 405P  
RED THAT'LL DO MISS 57N  
RED LAZY MC DIVIDE 8J  
RED TER-RON BRANDY 11J

**BW: -0.5 WW: 30 YW: 56 Milk: 16 Total Mat: 31**

- Another long backed, sweet fronted Brandy female that is very complete made and has a dark cherry red, rich hair coat
- Dam would blow you away with the amount of power, volume, and overall thickness she has
- Can't go wrong with a Brandy female

**\$2,750**

**LYONS CATTLE CO**

## RED TER-RON LARKABA 71G

HFX 71G 2129757 January 26 2019 CE  
BW: 61 lbs Adj 205: 656 lbs Adj 365: 1072 lbs

MRLA RELOAD 56C  
**RED MRLA UPLOAD 165E**  
RED MRLA MISS 4371B

RED BAR-E-L AB CROSSFIRE 160Z  
**RED MCGOWAN LARKABA 57E**  
RED MCGOWAN LARKABA 304A

S A V RESOURCE 1441  
RED MRLA MISS 641Y  
RED MRLA TILT 80Z  
RED MRLA MISS 345X  
RED TOWAW INDEED 104H  
RED BAR-E-L MEG 85N  
RED SCCA YOU'RE A STATEMENT 1Y  
RED THAT'LL DO LARKABA 4U

**BW: 1.1 WW: 39 YW: 69 Milk: 26 Total Mat: 46**

- Very deep bodied, wedge shaped, hairy Upload daughter out of a nice young two year old that we bought from our good friend Randy McGowan
- The 57E cow is out of the Bar EL Crossfire bull who is a full brother to Magic Mike that is owned by Wheeler Stock Farm
- Magic Mike is also the sire to Better Magic who has some great progeny in this sale

**\$2,500**

**KERRI LYNN MCFAUL**

71G

**\$3,500**

**REVERSE GC ANGUS**



76G

## RED TER-RON RACHEL 76G

HFX 76G 2093560 January 27 2019 CE  
BW: 100 lbs Adj 205: 658 lbs Adj 365: 803 lbs

RED U-2 RECKONING 149A  
**RED U-2 REVERENCE 198C**  
RED U-2 LAKOTA 427Y

RED U-2 BIG LEAGUE 544R  
**RED TER-RON RACHEL 50W**  
RED TER-RON RACHEL 315T

RED U-2 RECON 192Y  
RED U-2 ANEXA 271Y  
RED BDL UPROAR 124U  
RED FLYING K LAKOTA 104U  
RED LCC MAJOR LEAGUE A502M  
RED U-2 ANEXA 09E  
RED BAR-E-L APPROVAL 4L  
RED TER-RON RACHEL 315M

**BW: 4.5 WW: 42 YW: 67 Milk: 25 Total Mat: 46**

- Moderate framed Reverence daughter out of a Big League cow
- Super soft made female that is long spined and has a real maternal look





**\$2,500**  
**WAUTER VALLEY ANGUS**



**91G**

**RED TER-RON  
FREYJA 91G**

HFX 91G 2129758 TWIN January 31 2019 CE

BW: 80 lbs Adj 205: 619 lbs Adj 365: 889 lbs

RED U-2 RECKONING 149A  
**RED U-2 RENOWN 193C**  
RED U-2 ENVIOUS 147X

RED SIX MILE GAMER 224X  
**RED TER-RON FREYJA 154B**  
RED WARD'S FREYJA 56N

RED U-2 RECON 192Y  
RED U-2 ANEXA 271Y  
RED U-2 DYNAMO 7021T  
RED U-2 ENVIOUS 216M  
RED VGW GAME PLAN 816  
RED SIX MILE MS EXTRA 427U  
RED HANDFORD DYNAMITE 136L  
RED WARD'S FREYJA 49J

**BW: 2.7 WW: 31 YW: 44 Milk: 22 Total Mat: 37**

- Very sweet made Renown daughter that is very hard to find a hole in
- Super attractive, very strong footed, stout made yet very elegant through her front end
- One of our favourites for sure
- Twin

**RED TER-RON  
BRANDY 101G**

**101G**

HFX 101G 2105805 February 04 2019 CE

BW: 79 lbs Adj 205: 598 lbs Adj 365: 887 lbs

RED BAR-E-LAB MAGIC MIKE 189Z  
**RED BAR-E-L BETTER MAGIC 194D**  
RED BAR-E-L LARKABA 77A

RED TER-RON PARKER 34A  
**RED TER-RON BRANDY 130C**  
RED TER-RON BRANDY 115U

RED TOWAW INDEED 104H  
RED BAR-E-L MEG 85N  
RED BAR-E-L GAMBLER 87X  
RED LPH LARKABA 12T  
TER-RON PARK PLACE 18Y  
RED TER-RON DIAMOND MIST 164Y  
RED TER-RON FULLY LOADED 540R  
RED TER-RON BRANDY 711L

**BW: 1.3 WW: 35 YW: 54 Milk: 18 Total Mat: 36**

- Better Magic daughter that is also from the Brandy family
- Long, soft made, super hairy female that is out of a very nice Parker daughter that is the front pasture kind
- We really think the Better Magic daughters will be something special

**\$1,900**  
**ELLWOOD FARMS**



**135G**

**RED TER-RON  
ALICE 135G**

RPAH 135G 2093648 February 15 2019 CE

BW: 72 lbs Adj 205: 587 lbs Adj 365: 847 lbs

RED BAR-E-L ANTHEM 46A  
**RED COMBEST JUGGERNAUT 1613D**  
RED BAR-E-L MEG 85N

RED LAZY MC KINGMAN 16W  
**RED TER-RON ALICE 19B**  
RED TER-RON ALICE 7T

RED WHEEL ALLIANCE 22U  
RED BAR-E-L FRADO 209U  
RED YY RED KNIGHT 640F  
RED BAR-E-L MEG 035G  
RED RMJ REDMAN 1T  
RED LAZY MC MISS 67R  
RED BRYLOR PANAMA 69P  
RED TER-RON ALICE 7R

**BW: 0.6 WW: 34 YW: 46 Milk: 25 Total Mat: 42**

- Alice is a moderate framed, very complete heifer that will make a great cow
- 135G's moderate dam is the type you wish you had a whole herd of
- After calving some of those Juggernauts it makes a guy wonder why you would sell any



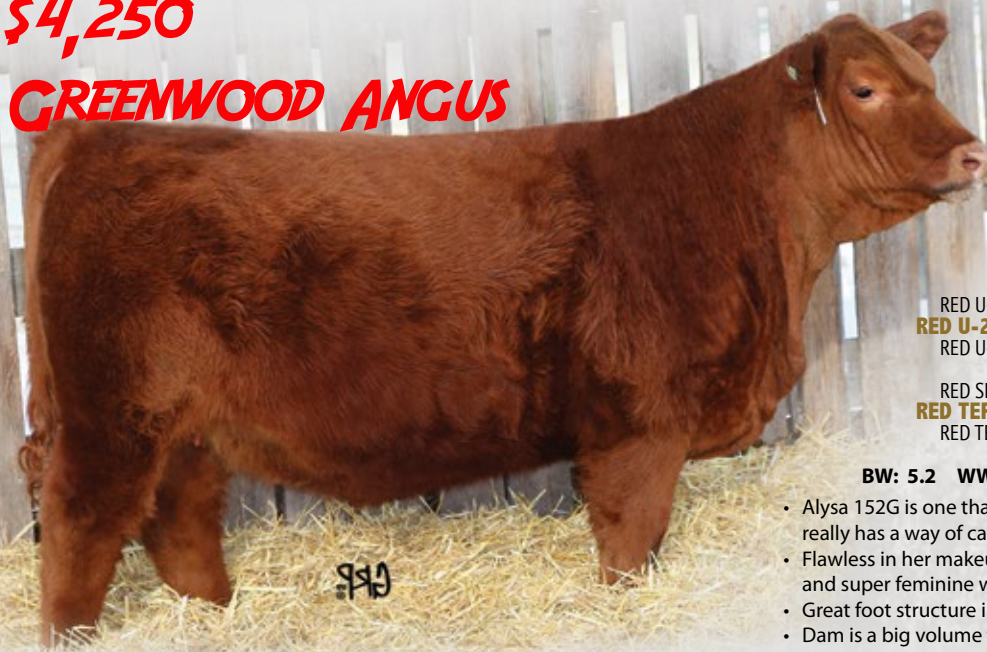
**\$2,500**  
**LYONS CATTLE CO**

Congrats to Maria Taschuk – Res Jr Heifer – Canadian Bull Congress 2020  
Bought out of Red Roundup 2019 - A Diamond Mist



**\$4,250**

**GREENWOOD ANGUS**



**152G**

**RED TER-RON  
ALYSA 152G**

RPAH 152G 2093653 February 20 2019 CE

BW: 97 lbs Adj 205: 649 lbs Adj 365: 1006 lbs

RED U-2 RECKONING 149A  
**RED U-2 RENOWN 193C**  
RED U-2 ENVIOUS 147X

RED SIX MILE HARD CORE 471Y  
**RED TER-RON ALYSA 91B**  
RED TER-RON ALYSA 32Y

RED U-2 RECON 192Y  
RED U-2 ANEXA 271Y  
RED U-2 DYNAMO 7021T  
RED U-2 ENVIOUS 216M  
RED SIX MILE WIN-CHESTER 745W  
RED SIX MILE FANNY 186T  
RED LAZY MC KINGMAN 16W  
RED TER-RON ALYSA 330T

**BW: 5.2 WW: 37 YW: 52 Milk: 21 Total Mat: 40**

- Alysa 152G is one that we feel is very special. She is a pen favourite that really has a way of catching your eye when you walk through the group.
- Flawless in her makeup... square made, big topped, nice in her lines, and super feminine with a real angular look
- Great foot structure in this young female
- Dam is a big volume female that if seen in person can make you understand where 152G gets her look from

**179G**

**RED TER-RON  
DIAMOND MIST 179G**

HFX 179G 2131177 March 10 2019 CE

BW: 98 lbs Adj 205: 671 lbs Adj 365: 1009 lbs

RED BAR-E-L AB MAGIC MIKE 189Z  
**RED BAR-E-L BETTER MAGIC 194D**  
RED BAR-E-L LARKABA 77A

RED TER-RON REALDEAL 01W  
**RED TER-RON DIAMOND MIST 107Y**  
BIG SKY DIAMOND MIST 290

RED TOWAW INDEED 104H  
RED BAR-E-L MEG 85N  
RED BAR-E-L GAMBLER 87X  
RED LPH LARKABA 12T  
RED TER-RON RELOAD 703T  
RED K ADAMS SAVANAH 11S  
HIGH VALLEY 4C6 AMBUSH  
ACN DMM DIAMOND MIST 26J

**BW: 5.7 WW: 50 YW: 70 Milk: 21 Total Mat: 46**

- Youngest heifer in the sale! This bombshell has as much depth, volume, structure, and capacity as any female in the sale
- These Diamond Mist cattle are as much of a sure thing as you can find. The Better Magic x Diamond Mist combination should be really special!!



**\$3,750**

**LOCK FARMS**

Terms & Conditions

**Bidding:** Each animal will be sold to the highest bidder. Bidding disputes: The auctioneer will settle any disputes as to bids, and his decision on such matters shall be final.

**Terms:** The terms of the sale are cash or cheque. The right of property shall not pass until after settlement is made. All settlements will be made with the clerks of the sale immediately following the conclusion of the sale and before any cattle will be released from the sale facility. Each animal becomes the risk of the purchaser as soon as sold.

**Guarantee:** We guarantee you a sound breeding bull, if he fails to be a satisfactory breeder, we will replace him with a bull of equal value or credit towards the purchase of another bull. No refunds. Bulls are not guaranteed to freeze semen, if you have any problems with your purchase, contact us immediately.

**Insurance:** Will be available sale day. All bulls fed for the month of April are at the purchasers risk and must be insured.

**Liability:** All persons who attend the sale do so at their own risk. Neither owners, clerks, or anyone connected with the sale assumes any responsibility, legal or otherwise for damage of any kind.

**Announcements:** Changes of information contained in this catalog will be corrected by announcements from the block at sale time and shall take precedence over any printed matter.

**Semen:** Ter-Ron Farms reserves the right to collect semen on any bull sold through this sale for in herd use only. This semen will be collected at the buyers convenience and seller's expense.

**Delivery:** Delivery will commence in April. Please leave delivery instructions at time of settlement.

**Certificate of Registry:** A certificate of registry and transfer will be furnished for each animal after full payment has been made.

**Cattle inspection:** All cattle carry permanent ID tags corresponding to sale Lot numbers. All shall be available for inspection prior to sale.

**Females:** All females are guaranteed breeders. The standard CAA guarantee will apply



# TER-RON FARMS BULL & SELECT FEMALE SALE



Keely



Kasey



**2019  
High Selling  
Bulls**

**Red Ter-Ron Riddler 57F**  
**High Selling Angus Bull – sold to**  
**Wheeler Stock Farm and Lodoen Cattle Co**



*Supreme Champion Summer Synergy 2019 - Calgary Stampede*



**Ter-Ron Go Daddy 810F**  
**High Selling Simmental Bull**  
**– sold to Brimacombe Family Farm**



*Supreme Champion Female Lloydminster Stockade Roundup*



*Reserve Champion Female 2019 4H Alberta Beef Heifer Show*



**2019  
High Selling  
Heifer**

**Red Ter-Ron Goldie 11F – sold to**  
**Rancho El Ermitano - Mexico**



# TER-RON FARMS BULL & SELECT FEMALE SALE



## *Thanks to our 2019 Buyers*

Lone Stone Farms  
Blue Creek Farms  
Wildor Farms  
Adair Angus Ranch  
Andy Niederer  
Kevin Van Slyke  
Hadwin Cattle Co  
Ken Crookes  
Triple X Red Angus  
Brooklyn Cattle Co  
Roger Stennes  
Rafael Ramirez - Mexico

Walsh Farms  
Wheeler Stock Farm  
Lodoen Cattle Co  
Varty Farms  
Richard Gould  
Topham Red Angus  
Dean Smigelski  
Ron Symes  
John Schmidt  
Spruceville Cattle Co  
Gary & Carol Scheler  
Neu Muehl Farming Co

On the Mark Cattle  
Blair Anderson  
David Mohr  
Brylor Angus  
Patrick Mathiot  
Airam Farms  
Dale Gibb  
Kevin Karpysbyn  
Brad Brenchley  
Brimacombe Family Farm  
Barnes Farms  
Ranch EL Ermitano  
Reverse GC Angus  
Davidson Angus  
Oulton Farms  
Dobinson Vet Services  
Fourwest Cattle Co  
Dwajo Angus  
JAS Red Angus  
Ian Campbell  
Bob Campbell  
Borderline Land & Cattle  
Darren Schultz  
Dan Prichard  
JD Johnson  
Leslie Angus  
Trevor Van Slyke

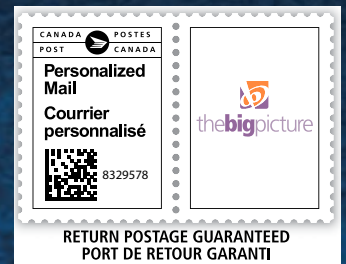




**Ter-Ron Farms**  
**Box 634**  
**Forestburg, AB**  
**T0B 1N0**



*Please call or email if you would like to be  
removed from our mailing list.*



**TER-RON** 03.19.2020

*Bull & Select Female Sale*

