

SALE RESULTS

24 BULLS AVERAGED \$5,659

7 OPEN HEIFERS AVERAGED \$4,464

WILSON SNIDER

BULL & FEMALE SALE

— ONLINE TIMED AUCTION —

3RD ANNUAL

Simmental & Sim Angus
THURSDAY MAR. 4, 2021 • 6PM

Sale Information

SALE DAY CONTACTS

Darryl Snider 780-385-5561
Quinn Wilson 403-604-4574
Scott Bohrsen 403-370-3010
Taylor Richards 306-821-4169
Martin Bohrsen 306-220-7901
Robert Voice 270-6082
Dan Skeels 403-783-1217
Robert Lind 780-542-0123
Dennis Ericson 780-361-9347
Dean Edge 403-704-0280

INSURANCE

Canadian Farm Insurance

Heather Barr 780-853-7067

All bulls remaining on the farm after the sale will require insurance.

ONLINE BIDDING

Mark Shologan 780-699-5082



ONLINE TIMED
AUCTION

See instructions
on pg. 5

WILSON SNIDER 100% GUARANTEE

All bulls are guaranteed to be satisfactory breeders in accordance with the Canadian Simmental Assoc. guidelines. Should a problem occur barring physical injury or mismanagement, a bull of equal value will be provided or a credit will be issued towards the purchase of another bull. We always have back-up bulls for our customers and we guarantee you will have a bull to service your cows.

DELIVERY OPTIONS

Free delivery to central points in Manitoba, Saskatchewan, and Alberta, all other points will be cost shared. Delivery will start immediately after the sale at the seller's convenience or bring your trailer sale day and receive a \$50 discount per bull. All bulls must be insured if not taken home sale day.

SIGHT UNSEEN

If you are unable to make it to the sale, and are interested in the bulls or females, give us a call and we can discuss. We will be more than happy to discuss your programs and try to answer any questions about our sale animals. We will refer you to our sales staff to represent you on sale day. For sight unseen purchases we guarantee satisfaction upon delivery

CATALOGUE INFORMATION

EPD's are current and up-to-date as of publication date. Information in this document is believed to be accurate but any updates from the auction block will take preference. Pedigrees in this document have been supplied by the Canadian Simmental Association and all other information has been supplied by the seller.

SCHEDULE OF EVENTS

Wednesday March 3

Thursday March 4

9am - Bidding opens

6pm - Timed Closeout Begins

WWW.FARMGATETIMEDACTIONS.CA

Actual Weaning Weights

SEPT. 1, 2020

Thanks to everyone for your interest in our offering on March 4. We greatly appreciate the repeat and new customers each year and look forward to being around to support you for many years to come.

I can tell you I'm delighted to be calving cows as I write this and enjoying time away from the news and chaos we've all been living with in 2020. Our beef industry is essential in all situations regardless of changes in politics or health concerns.

We are proud of the bulls we've assembled for you this year in both the yearling and extra age bulls. They have been brought along slowly so they will stand up over time and provide you with the longevity you should expect in your herd bulls. There are a number of sires represented giving you options for both performance bulls as well as a number of yearlings who have some calving ease built in. These bulls come from a combined cowherd of over 300 registered cattle and only the best ones make the sale. We aren't looking to bring volume but rather quality bulls. With our current environment our sale will once again be held online – but we strongly encourage you to visit Darryl Snider's location to view the bulls and have a good look at them prior to the sale. Photo's, pedigrees and videos (available on DLMS) will also be available on each of the sale animals to allow you the ability to make a good assessment of what we have to offer.

The heifers are new to our sale this year. Most of them are off of our flush cows that have been flushed a number of times in 2020 to various sires. These heifers come from powerful dams that have not just produced one good calf but have done it over and over again. We hope you will take a good look at this solid set of heifers.

Both Darryl and I would be happy to answer any questions you might have on any of the sale animals and definitely enjoy talking cattle. Contact us at anytime if you have a question or would like more information. Wishing everyone only the best in 2021 and hoping the next sale can be in person and with a good crowd to socialize and enjoy more normal times again.

All the best from both the Snider's and the Wilson's



WILSON STOCK FARM - SNIDER'S CATTLE SERVICES

QUINN WILSON & FAMILY

Calgary, AB - quinn_wilson@hotmail.com

Quinn - 403.604.4574

DARRYL, DEBBIE, COOPER & OWEN SNIDER

Viking, AB - sniderd@telus.net

Darryl - 780.385.5561 Debbie - 780.385.0620

Sales Management

The Wilson/Snider Production Sale is an elite offering of breed leading genetics that are sure to peak your interest. The cattle are high quality and the people behind them are even better. Quinn, Darryl, Deb and their entire families are good-hearted, passionate and committed people that make this industry so enjoyable. Their love for strong cattle and offering their customers the very best is to be admired and you can invest in bulls and heifers here with the utmost confidence that you're buying elite stock from some of the best people in the business.

The bulls on offer are backed by production females that stem to many of the top cow families in the industry. The yearling bulls are the type that will provide ROI as the power bulls have muscle, stoutness, payweight and overall performance to raise a heavy set of offspring at weaning. Many calving ease options are also on hand that will provide ease at calving time and well performing sons and top end cut of replacement daughters. The strong group of extra age bulls have been carefully selected through on feet, docility, structure, fertility and overall quality and you're getting an opportunity on these intentionally left bulls to cover a few more cows. Now the heifers, man did they dig deep!!! Quinn isn't a fan of selling females and he understands that's the backbone on your program but what a statement they're making with this set of females off their very top in order to showcase the strength of their program. They really are strong on the top end with some being direct daughters of their best donors, the WSF and Snider females are of high quality in this event.

We do highly recommend for you to reach out to Darryl in order to view this strong offering at their place in Viking, AB. He would love to show you the offering at any time and they're proud of the depth throughout and rightfully so. Our BMS Team is very familiar with the offering and know there's strength throughout bulls and females for everyone's budget and programs. When buying at this sale, you're not only investing in quality cattle but also investing in 2 great families, the Wilson's and Snider's that stand behind their product 100% and will ensure you're beyond happy with your investment!

Best regards,
- the Bohrsen Marketing team



Bohrsén Marketing Services Ltd. - 403.519.3515 - www.bohrsén.com

How to Participate in this **DLMS FARM GATE TIMED AUCTION** with Extended Bidding:



1. Visit <https://farmgatetimedauctions.ca>, click the LOGIN/REGISTRATION button. First time users will select the REGISTER button from this page. Fill out the registration form to sign up for a free user account and it allows you to select a username and password for use on all Farm Gate Timed auctions. This program will send you text and email messages whenever there is activity on your favorite lots or someone challenges your proxy bid and this is why you will be asked for both your current email and cell phone number. If you are a past participant in the Farm Gate Timed auctions simply enter your user name and password to continue. This takes you to a list of both current and upcoming Farm Gate Auctions.

2. You can choose your favourite lots in this sale at this time and the program will allow you to open either all sale lots or just your favorite lots on your screen. Any time there is active bidding on a lot you have identified on your favorite list you will get a text and/or an email noting this activity.

3. The program allows you to place a proxy bid on any sale lot. This in fact protects your interest in any lot of interest for you to a specified dollar value you set, when you may not be able to give 100% attention to the sale. If the lot has a \$2000 bid on it and you place a proxy bid of \$3500 into the system, the computer will bid \$2100 for you but if some one else bids \$2200, the computer will again bid for you, this time at \$2300. The system will look after your interest to a maximum of \$3500. If another bidder is on at \$3600, your proxy will no longer be effective and you will no longer have the winning bid on this lot without once again logging in and bidding again or moving your attention to a second lot of interest.

4. At Closing time of the sale the entire sale will extend bidding for 5 minute if a bid is placed on any lot in the sale. Any bid received after 6 PM will extend the sale by 5 minutes from the time of that bid. When no bidding occurs for 5 min the computer will declare the sale finished.

5. Within 24 hours of the sale close the Sale consignor will contact all winning bidders to arrange payment, transfer of pedigrees and delivery/ Pick up of your lot.

What is Racehorse Style Close? Racehorse style sale close is when the entire sale stays open in extended bidding. This type of sale allows you as the bidder to change to a different lot within the same sale if the bidding has gone in to extended bidding.

How will Extended Bidding works? When we get to the close out end time the clock for close extends with any bid placed with less than 5 min on the clock. This type of extended bidding turns the end time to more of a soft time. Extended bidding allows bidders to compete in lots like a real auction and give all bidders the same time to make a decision. Always follow the clock to see how much time remains in the sale you are interested in.

lot 1

\$9,250

R PLUS SIMMENTALS



- A true red performance calf out of Digger that I would be proud to send to anyone
- Extremely docile with muscle and red meat in all the right places
- The cow he is out of has an excellent udder and is a picture on pasture or in the winter
- This bull has looked the part of a true herd bull from an early age



SIRE

WSF GOALTENDER 43H

PB Simm - Homo Polled Pending - 1341824 - WSF 43H - JAN 21, 2020

Act. BW	Act. WW	Act. YW	CE	BW	WW	YW	MCE	MWW	Milk	API	TI
91	749	-	6.5	5.5	77.6	110.7	4.2	64.7	25.9	116.71	68.20

MAF R HORIZON 7Y
S. DEEG **DIGGER 13E**
DEEG MS 34X

MR PARKHILL ON RAGE
D. WSF **TEMPLE 200E**
SPRINGCREEK LENA 803B

lot 2

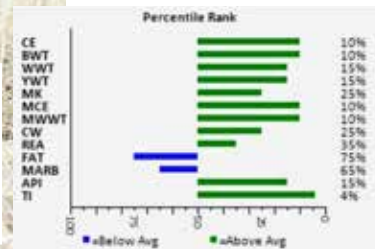
\$14,500

**ANCHOR D SIMMENTALS
& SODERGLEN RANCHES**



DAM

I bought this Bull's dam at the WLB bred heifer sale where she was tied for the high seller that day at 16K. At Bill's dispersal I went back and bought this cow's mother and two of her aunts, and that tells you what I think of this cow family. A beautiful dam with a super udder and tonnes of performance. This calf has 8 of 13 EPDs that are in the top 15% or better for the breed - that is outstanding! I really think this calf could work in both a purebred operation and high end commercial programs to improve predictability, performance and maternal strength.



WSF BYFIELD 45H

PB Simm - Homo Polled - 1339756 - WSF 45H - JAN 26, 2020

Act. BW	Act. WW	Act. YW	CE	BW	WW	YW	MCE	MWW	Milk	API	TI
86	749	-	11.8	0.6	85.7	126.9	7.7	76.0	33.1	133.64	81.23

HSF HIGH ROLLER 12T
 SKORS HIGH ROLLER 34C
 SKORS JEWEL 226A

LFE THE RIDDLER 323B
 WLB 323B RITA 361F
 JFRS MS 43Y

lot 3

\$5,000
CUMMING
FARMS INC



SIRE

WSF PERFETTI 22

PB Simm - Homo Polled Pending - 1339764 - WSF 22H - JAN 13, 2020

Act. BW	Act. WW	Act. YW	CE	BW	WW	YW	MCE	MWW	Milk	API	TI
96	898	-	3.6	6.6	96.1	136.4	2.4	72.4	24.3	105.44	73.81

SVS CAPTAIN MORGAN 11Z
 ♂ BGS/BM CAPTAIN SCREAM 63D
 RF SCREAM 215Z

IPU RED ZONE 16A
 ♂ IPU 89W MS NOREMAC 66C
 3D MISS RED NOREMAC 89W

- An embryo calf out my donor IPU 66C. I will have over 15 calves from 66C in 2021
- Dam is a power cow with perfect udder and overall mass. Combined with Captain Scream and you have a true performance calf that will breed very true.
- This guy has been a chunk with tonnes of red meat since he hit the ground.
- If you want a pen of steers that will top the market then buy this calf. He will deliver pounds in the fall with reasonable birthweights—the perfect combination.

lot 4

\$3,250
LLOYD KNULL



MAT. SIB.

WSF HOLLOWAY 55H

PB Simm - Homo Polled Pending - 1339710 - WSF 55H - JAN 31, 2020

Act. BW	Act. WW	Act. YW	CE	BW	WW	YW	MCE	MWW	Milk	API	TI
99	767	-	9.3	3.0	79.8	118.6	5.8	67.2	27.3	125.50	72.60

W/C LOADED UP 1119Y
 ♂ WFL BERETTA 8F
 WFL SWEET DELICIOUS 532C

SPRINGCREEK LOTTO 52Y
 ♂ SPRINGCREEK LENA 803B
 SPRINGCREEK LINNE 23R

- Another bull with exceptional EPD performance
- This bulls dam is a powerful Lotto daughter from the Springcreek program
- 803B never missed and is the mother of the dam of the Lot 1 calf. She crosses exceptionally well on every bull I use on her.
- This calf has performance on both sides of the pedigree and still achieves excellent EPDs on calving ease. This bull will work.

lot 5

\$4,000 DIAMOND J SIMMENTALS



WSF MCMICHAEL 47H

PB Simm - Polled - 1339739 - WSF 47H - JAN 28, 2020

Act. BW	Act. WW	Act. YW	CE	BW	WW	YW	MCE	MWW	Milk	API	TI
97	846	-	8.3	3.6	87.6	129.5	5.4	73.9	30.1	126.45	79.50

W/C LOADED UP 1119Y
 ♂ **WFL BERETTA 8F** WFL SWEET DELICIOUS 532C
 ♂ **WFL WESTCOTT 24C** PHEASANTDALE ELIZABETH 232E
 BLACKSAND FEARLESS 5A

- If you follow EPDs then you need to look at these Beretta calves
 - This calf is above breed average in 12 of 13 of the EPDs and in a number of cases in top quartile
 - Beretta combines both style and performance and it shows in this calf
 - Martin Bohrn helped me pick out the dam at Pheasantdale and I always trust Martin's judgement. He was dead right when he recommended her. She is easily one of my top 5 cows in the herd. Big, powerful, correct structure, feet and udder. Exactly what you want for the mother of a herdsire.

lot 6

\$5,000 CARMELLA FARMS



WSF SUZUKI 50H

PB Simm - Polled - 1339780 - WSF 50H - JAN 29, 2020

Act. BW	Act. WW	Act. YW	CE	BW	WW	YW	MCE	MWW	Milk	API	TI
89	816	-	10.0	3.1	74.5	107.7	4.5	70.6	33.3	121.77	71.29

ANCHOR "T" RUSTY 59G
 ♂ **STARWEST POL BLUEPRINT** PHS HOMOZYGOUS XCEPTIONAL
 LFE BS LEWIS 3079X
 ♂ **MISS PARKHILL LOUIS** MISS PARKHILL 27X

- Super red blaze bull – a very solid bull with performance built in
 - If you retain your own females you need to buy this bull. Both sire and dam have outstanding maternal traits and are extremely predictable
 - We added Blueprint to drive strong maternal traits, udder quality, feet etc in our purebreds and he is delivering on it in spades. I have retained many daughters and have a number in production and will continue to leverage fullblood genetics on my purebreds

lot 7

\$5,500

HSN SIMMENTALS



DAM

WSF HARLEY 62H

PB Simm - Polled - 1339743 - WSF 62H - FEB 5, 2020

Act. BW	Act. WW	Act. YW	CE	BW	WW	YW	MCE	MWW	Milk	API	TI
83	839	-	6.2	4.3	83.0	129.9	4.1	69.9	28.4	122.09	72.36

LFE CASH 386D
S LFE GAME FACE 338F
 LFE BS AMBER 60D

SKORS BLACK ENTICER 4W
D SKORS BLACK DYNO 147D
 SKORS MS RED DYNO 268R

- The dam of this bull is as long as a train. She was a top pick out of the Skor dispersal last fall. She is a daughter of Skors Enticer 4W who has proven to be an outstanding maternal sire.
- The Game Face progeny are performing extremely well and this guy is solid.
- This bull will add both performance to your calf crop and also inject maternal strength in your replacements.

lot 8

\$6,000

NORTH HILL
SIMMENTALS

SIRE

WSF MERCER 49H

PB Simm - Polled - 1339753 - WSF 49H - JAN 29, 2020

Act. BW	Act. WW	Act. YW	CE	BW	WW	YW	MCE	MWW	Milk	API	TI
94	858	-	5.1	5.1	82.8	118.0	1.8	74.6	33.2	116.61	74.50

TNT 90 PROOF Z401
S WFL WESTCOTT 24C
 WFL SWEET LICIOUS 1044X

ANCHOR D IMAX 250Y
D JNR DANIQUE
 BEE HEIDE 434B

- Very strong set of performance EPDs on this calf for WW and YW with performance bred in
- His IMAX dam has excellent feet and udder and will be flushed in 2021 so expect many more siblings. She has been an extremely strong producer from JNR simmentals
- This combination of purebred X fullblood will be a cornerstone of WSF bulls over the coming years
- Keep every daughter of this bull as he is loaded with predictability and quality

lot 9

\$5,250
JEFF SAGEN

**WSF NEWHOOK 9H**

PB Simm - Polled - 1339712 - WSF 9H - JAN 5, 2020

Act. BW	Act. WW	Act. YW	CE	BW	WW	YW	MCE	MWW	Milk	API	TI
92	831	-	7.1	3.4	81.6	124.4	2.4	61.5	20.7	113.77	71.99

CDI AUTHORITY 77X
S. SKORS CHALLENGER 31E
SKORS RED FORTUNE 176Y

TNT BOOTLEGGER Z268
S. SKORS ALLISON 119E
SKORS ALLISON 213Z

- This calf is out of a beautiful Bootlegger daughter that I purchased from the Skor dispersal. I saw her out on pasture and had to have her and she did not disappoint me.
- This bull has a lot of performance but still has very respectable calving ease and birth weight numbers.
- Lots of length to this calf with a herd bull look to him from an early age. A very solid calf.

lot 10

\$5,500
JAY HOLT

**WSF MR. WILSON 7H**

3/4 ANGUS - Polled - Unregistered - WSF 7H - JAN 5, 2020

Act. BW	Act. WW	Act. YW	CE	BW	WW	YW	MCE	MWW	Milk	API	TI
78	828	-	-	-	-	-	-	-	-	-	-

S A V RESOURCE 1441
S. BROOKING INTERSTATE 4048
TLA BEAUTY 6R

STARWEST POL BLUEPRINT
S. WSF FANCY 24F
MAPLE LAKE 5156

- Calving ease and performance in one solid black package with a wide ass end and broad across the top. Exceptional calf who is 3/8s Simmental and 5/8s Angus.
- This beef bull is out of a first calf 3/4 blood Blueprint daughter. She did a very good job weaning this guy off at over 800 pounds in early September.
- I have been breeding all my heifers to a very good Angus bull I bought from Brooking Angus. He is a direct son of the Beauty 6R cow and puts a perfect udder on all of his daughters.
- This bull will calve very well given his moderate birth weight and packs a punch on performance at weaning time.

lot 11

\$7,750
WESTWAY
FARMS



PB Simm - Polled - 1339786 - WSF 150H - JAN 15, 2020

Act. BW	Act. WW	Act. YW	CE	BW	WW	YW	MCE	MWW	Milk	API	TI
91	721	-	9.7	3.2	81.9	119.9	5.6	68.7	277	109.98	71.45

WHEATLAND BENTLEY 630D
S IPU BENTLEY 81F
CLAYHILL FANCY LUCA 39A

STARWEST POL BLUEPRINT
D MAPLE LAKE BLUE PRINT 8450
ANGUS/SIMMENTAL

- This red baldy is out of the IPU Bentley bull that sold for over 90K. I was runner up on that bull as I really liked that calf.
- This bull may be a $\frac{3}{4}$ blood but he is absolutely exceptional.
- His dam is a solid black $\frac{1}{2}$ blood daughter of Blueprint who put a perfect udder on this cow. This calf will make your neighbors drool when they drive by your pasture. He is a picture.

Wilson Snider Testimonial

“Very happy with our purchases.
Greatly appreciate the honesty and
integrity they bring to the business.”

- Skori Farms -

Thank You TO OUR 2020 BUYERS

BEAGLE SIMMENTALS
DARRYL FARMS LTD
ERICSON LIVESTOCK
HATTIE LAKE SHORTHORNS
HSN SIMMENTALS
JOE HEJDUK
LANSING LAND & LIVESTOCK
MUD BUTTE SIMMENTALS
PEMBINA RANCHING
RANDY THOMPSON
STACY FULLER
TOP OF THE ROCK FARMS

TWO YEAR OLD BULLS

lot 12

\$6,800

**CHERNOFF FARMS
LTD**



WSF GI JOE 9259G

PB Simm - Polled - 1341309 - WSF 9259G - JAN 15, 2019

Act. BW	Act. WW	Act. YW	CE	BW	WW	YW	MCE	MWW	Milk	API	TI
88	-	-	9.5	2.9	76.1	110.1	5.3	63.2	25.1	108.35	72.20

WHEATLAND CIRCUIT BREAKER
 ♂ **WHEATLAND KILL SWITCH**
 HR/RR MS CANDACE T73

WHEATLAND SWAGGER 343A
 ♂ **MAPLE LAKE SWAGGER 6259**
 MAPLE LAKE 2059Z

- Great color, great BW an strong performance – nice combination
- Kill Switch cattle work and this guy is a strong herd bull candidate
- Good disposition and lots of grow in this guy

lot 14

\$5,000

**SULLIVAN
FARMS**



WSF GEAR SHIFT

PB Simm - Scurred - 1341324 - WSF 39G - FEB 11, 2019

Act. BW	Act. WW	Act. YW	CE	BW	WW	YW	MCE	MWW	Milk	API	TI
100	-	-	10.7	1.3	69.9	103.7	6.6	70.2	35.2	124.46	69.42

KUNTZ MARSHALL 12Y
 ♂ **KUNTZ SHERIFF 8A**
 PEACOCK'S LI'L NETTIE 23Y

KOP CROSBY 137W
 ♂ **BLCC MISS CROSBY 27E**
 BLCC MISS PORCHE 437X

- A Sheriff X Crosby son which is a great combination of calving ease and performance
- This bull was purchased in dam and has performed very well alongside his pen mates
- Strong EPDs for BW, CE and maternal values. A solid choice

lot 15

\$5,250
BLAINE BUSS



WSF CASH REWARD 301G

PB Simm - Polled - 1287382 - WSF 301G - JAN 11, 2019

Act. BW	Act. WW	Act. YW	CE	BW	WW	YW	MCE	MWW	Milk	API	TI
94	-	-	7.6	4.5	78.8	115.9	4.7	66.8	27.4	112.97	72.25

LFE BOUNTY 3118Z
♂ **LFE CASH 386D**
LFE BS FIRSTBASE 39B

LFE MCDAVID 413C
♀ **LFE BS MISS REWARD 617D**
LFE BS MISS REWARD 618A

- This calf was purchased in dam where she was one of the high sellers at the Lewis Farms female sale for 25,000
- I have flushed this cow many times and will continue to as I have now got over 6 calves on the ground from her and three replacement heifers in the pen to be bred this year. She has a perfect udder
- This bull will deliver calving ease with the baldy faces and all the maternal strength you could ask for.

lot 16

\$4,500
CHESTER BLATZ



WSF OPENING NITE 68G

PB Simm - Polled - 1341825 - WSF 68G - MAR 23, 2019

Act. BW	Act. WW	Act. YW	CE	BW	WW	YW	MCE	MWW	Milk	API	TI
90	-	-	7.0	5.4	73.9	104.0	3.7	58.5	21.5	103.52	61.51

MAF R HORIZON 7Y
♂ **DEEG DIGGER 13E**
DEEG MS 34X

WHEATLAND SWAGGER 343A
♀ **MAPLE LAKE 5156**
ANGUS/ANGUS

- 5156 is a 1/2 blood purchased from Maple Lake - I have two daughters in the herd one of which raised Lot 10. This is a strong cow family.
- This is a quality 3/4 blood that will add pounds in the fall and all the maternal traits you would want in your herd
- Digger on top means docility and pounds in the fall

lot 17

\$6,500
SWEETGRASS
RANCH



SIRE

WSF CUSTOM MADE 18G

PB Simm - Polled - 1305430 - WSF 18G - JAN 27, 2019

Act. BW	Act. WW	Act. YW	CE	BW	WW	YW	MCE	MWW	Milk	API	TI
98	-	-	3.3	6.7	93.3	134.8	2.5	70.8	24.1	106.09	72.44

SVS CAPTAIN MORGAN 11Z
 ♂ BGS/BM CAPTAIN SCREAM 63D
 RF SCREAM 215Z

MR PARKHILL ON RAGE
 ♂ SNIDER'S CIPHER 12D
 MS PARKHILL 9U

- In 2020 when we switched at the last minute to a video sale because of covid we held 18G and 44G back because they are good performance bulls and we were concerned about #s of red bulls going strictly on line. We had interest in them but we decided to hold them for our sale this year as they are both very solid and from excellent cows.

- 18G is out of Captain Scream who needs no introduction and the Cypher cow that Darryl raised. I bought an embryo pack on her as she is an excellent cow.

- 18G is muscular, great disposition and has excellent feet and legs. This bull will cover a large number of cows and look like a champ at the end of breeding season

lot 18

\$5,500
BADER FARMS
LTD



SIRE

WSF PAY LOAD 44G

PB Simm - Polled - 1305828 - WSF 44G - FEB 21, 2019

Act. BW	Act. WW	Act. YW	CE	BW	WW	YW	MCE	MWW	Milk	API	TI
97	-	-	6.1	6.0	77.2	108.6	2.5	59.0	20.4	115.13	68.46

MAF R HORIZON 7Y
 ♂ DEEG DIGGER 13E
 DEEG MS 34X

PARKHILL RED EDGE 39Y
 ♂ PHR CAMILLE
 MISS PARKHILL ELANA 59Z

- A big rugged son out of Digger
- Lots of testicle, frame and performance in this bull with a reasonable birth weight
- Power bull that would cross really well on many cows and provide ample performance in your calf crop. Digger sons are docile and easy doing.

lot 19



\$5,500
HARRISON
CROSSING

WSF GLADIATOR 300G

SimAngus - Polled - 1341316 - WSF 300G - APR 14, 2019

Act. BW	Act. WW	Act. YW	CE	BW	WW	YW	MCE	MWW	Milk	API	TI
77	-	-	9.3	1.7	73.6	111.6	3.5	57.7	20.9	106.90	66.54

S A V RESOURCE 1441
♂ **BROOKING INTERSTATE 4048**
TLA BEAUTY 6R

MRL EL TIGRE 52Z
♀ **WLB 52Z TARA 377B**
MJ BLACK ELLIE MAY 30R

- The "WLB cow" has a picture perfect udder and has had a bull in every sale I've had and has a top prospect for 2022 as well. She has only ever had bull calves and they all work.
- This bull is very shapely with a great muscle pattern and is a quality ½ blood prospect.
- Expect maternal strength from this bull along with great weaning weights and modest birth weights.

lot 20



\$5,250
MADSEN
FARMS

WSF GRIFFIN 5G

SimAngus - Scurred - 1341320 - WSF 5G - JAN 1, 2019

Act. BW	Act. WW	Act. YW	CE	BW	WW	YW	MCE	MWW	Milk	API	TI
60	-	-	10.5	1.2	70.5	107.4	4.8	60.0	24.7	113.36	66.97

S A V RESOURCE 1441
♂ **BROOKING INTERSTATE 4048**
TLA BEAUTY 6R

SKORS HIGH ROLLER 34C
♀ **PWK LITTLE KITTY 146W 23E**
PWK LITTLE KITTY 6M 146W

- Black Blaze ½ Blood bull out of a solid red blaze female
- If you are looking for a black blaze calving ease bull this guy will fit the bill
- With a 60lb BW and CE and BW EPDs like these you will sleep easy

lot 21

OUT OF SALE



WSF THORN 14G

PB Simm - Polled - 1341306 - WSF 14G - JAN 23, 2019

Act. BW	Act. WW	Act. YW	CE	BW	WW	YW	MCE	MWW	Milk	API	TI
90	-	-	10.7	2.0	83.7	122.0	5.9	69.2	27.3	129.13	77.35

LFE VIPER 455U
 ♂ **NCB COBRA 47Y**
 NCB MISS DREAM 22T

MRK PRIORITY 3C
 ♂ **IPU MS. PRIORITY 205E**
 BLCC MISS RIDGELINE 72Z

- The dam of this bull is a beautiful black baldy with a super udder – the kind you want your herd bull to be out of
- The EPDs on this bull are exceptional with 10 of 13 being well above breed average
- An easy doing bull

lot 22

\$4,250
TWIN VALLEY
RANCH



WSF GREEN BAY 12G

PB Simm - Polled - 1341314 - WSF 12G - JAN 16, 2019

Act. BW	Act. WW	Act. YW	CE	BW	WW	YW	MCE	MWW	Milk	API	TI
82	-	-	4.9	4.2	84.4	126.5	4.9	70.4	28.2	118.60	72.03

RCC/TCF LINE DRIVE MI81
 ♂ **SPRINGCREEK LINER 56U**
 NEVAS L93

R PLUS RELOAD 2006Z
 ♂ **WFL RED SAGE 506C**
 WFL RED SAGE 1003Y

- I purchased this calf as an embryo implanted in a recip at the Border City Sale.
- His recip dam had issues and so he was orphaned at about 4 months but he has come on strong and will make a great maternal sire for someone wanting to keep back replacements.
- His pedigree is as strong as you can make on in the simmental world being out of 56U and the Sage donor cow that has hit it out of the park over and over again. You can buy this calf with confidence that he will breed well.

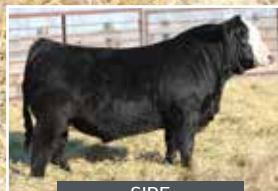
lot 23

\$6,750

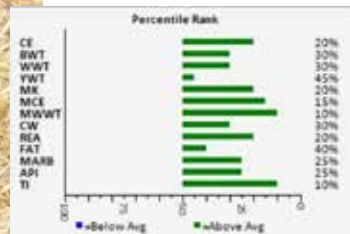
ANDERSON ANGUS



81Y is the mother of this powerhouse bull. She is a no fuss, big bodied, large footed cow. 81Y has several milking daughters, and we are overjoyed with how great they have produced for us and other producers. 5H is a solid black, tank of a bull that has exceeded our expectations. He is deep, wide bodied, with large testicular development that is very impressive. This yearling has hair, great disposition, and will catch your eye everytime he walks by you. He has a wide loin that follows all the way through down to his lower quarter into his hip. Be sure to check out his amazing EPDs, they are worth the read.



SIRE



SNIDER'S FINAL DRAFT

PB Simm - Homo Polled Pending - 1339375 - DEB 5H - JAN 25, 2020

Act. BW	Act. WW	Act. YW	CE	BW	WW	YW	MCE	MWW	Milk	API	TI
93	910	-	10.5	2.6	80.7	113.1	6.9	76.1	35.7	128.01	78.27

W/C LOADED UP 1119Y
 S. WFL BERETTA 8F
 WFL SWEET DELICIOUS 532C

PARKHILL 38S
 MISS PARKHILL SAGE 81Y
 MISS PARKHILL 79S

lot 24

\$4,500

PHIL & JOANNE
DECHAINED

MAT. SIB.

LITTLE MAN'S TOM

PB Simm - Homo Polled Pending - 1339373 - CAS 6H - JAN 30, 2020

Act. BW	Act. WW	Act. YW	CE	BW	WW	YW	MCE	MWW	Milk	API	TI
98	849	-	3.6	6.0	89.7	129.1	0.6	70.4	25.5	109.98	73.95

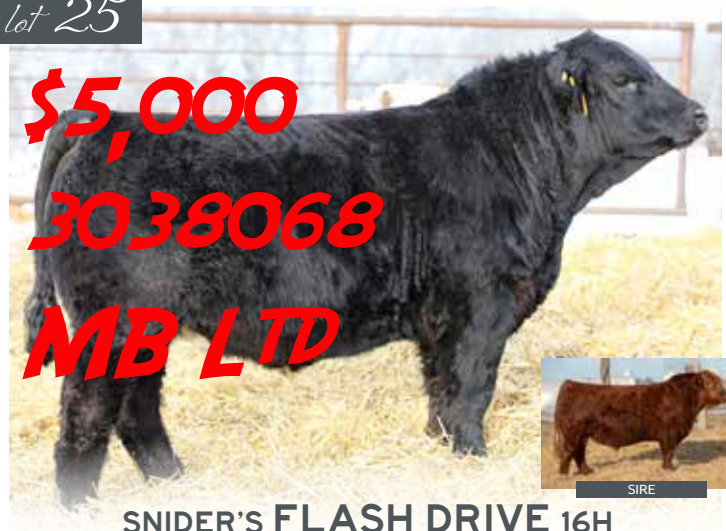
TNT 90 PROOF Z401
 ♂ WFL WESTCOTT 24C
 WFL SWEET LICIOUS 1044X

TNT DYNAMITE BLACK L137
 ♂ LFE CANDY KISSES 395
 LFE TINA 15G

This bull's dam has been Cooper's outstanding donor female. Candy Kisses has put more blazes on bulls than any other female on the farm, and has had the most keeper pen bulls to date. We would not be in the Simmental business if it were not for this once in lifetime cow, that has produced this freight train of a baldie bull. 6H will add extra length, hair, and maybe will keep a white face on his calves. This bull has a large foot and will hold up over time. This bull has the honor of being the maternal brother to CAS Hugs n Kisses and will knock your socks off when his progeny starts hitting the ground.

lot 25

\$5,000

3038068
MB LTD

SIRE

SNIDER'S FLASH DRIVE 16H

PB Simm - Homo Polled Pending - 1342982 - DEB 16H - JAN 6, 2020

Act. BW	Act. WW	Act. YW	CE	BW	WW	YW	MCE	MWW	Milk	API	TI
81	-	-	11.5	0.1	63.2	89.3	4.8	59.3	27.7	138.08	71.97

HOOKS SHEAR FORCE 38K
 ♂ WHL RED HEAT 1734E
 CMS SODA POP 422B

LFE RED TANKER 490P
 ♂ MISS PARKHILL BAILEY 2F
 MISS PARKHILL 86M

16H's mother carries some old genetics with a solid well-balanced udder. 16H lineage goes back to fullblood genetics with calving ease. Interestingly, he is solid black with 2 red parents. This solid black bull has the numbers to be a calving ease bull, with a very smooth front end. This guy has hair to spare, and is a stylish herdsire in the making. 16H is a very complete package and worth a look.

I don't like selling heifers. Darryl knows that. When he took my flush cows to manage them this year a number of them had heifer calves. I specifically told him I wasn't going to sell those heifers. Fast forward 8 months and Darryl has halter broke the heifer calves, clipped them, tie broke them and told me we needed them for the sale. What a turkey!! Haha. You can buy these heifers with confidence. I am looking to replicate each of them and hope you enjoy them. I would gladly keep all of them in my herd.

Quinn Wilson



lot 26

\$7,500
WESTWAY
FARMS LTD



WSF DOTTIE DOLL 204H

1/2 SimAngus - Homo Polled - 1343165 - WSF 204H - FEB 22, 2020

Act. BW	Act. WW	Act. YW	CE	BW	WW	YW	MCE	MWW	Milk	API	TI
86	-	-	11.5	1.2	70.4	104.6	7.4	55.3	20.1	111.85	65.58

W/C LOADED UP 1119Y

WFL BERETTA 8F

WFL SWEET DELICIOUS 532C

S A V BULLET 0473

PEAK DOT BARDOLIA 748A

BARDOLIA OF PEAK DOT 604U

- Everybody likes a black blaze but this one has a lot more – deep, broody, sweet front end and very feminine
- This Peak Dot cow has been flushed many times and was again this past year. She is just powerful and correct and an ideal cow regardless of breed.
- This half blood will bring performance and style to any breeding program and would look sweet on the end of a halter.

lot 27

\$7,750
PHEASANTDALE
CATTLE CO



WSF HEART STRINGS 201H

PB Simm - Homo Polled - 1341304 - WSF 201H - JAN 15, 2020

Act. BW	Act. WW	Act. YW	CE	BW	WW	YW	MCE	MWW	Milk	API	TI
94	-	-	5.2	5.2	90.0	135.9	0.1	67.4	22.4	115.43	77.53

TNT 90 PROOF Z401

♂ **WFL WESTCOTT 24C**
 WFL SWEET LICIOUS 1044X

CSCX BANDWAGON 513A

♂ **MUIRHEADS PERFECT 73E**
 MUIRHEADS PERFECT 85Y

- Classic Westcott heifer, great feet, size, mass and a super black blaze face
- The dam of this cow was flushed a few different ways this past year and you can expect to see more of her in future sales
- Super quiet would make a great show heifer

lot 28

\$2,250
WESTMAN
FARMS



WSF HARRIET 203H

1/2 SimAngus - POLLED - PENDING - BOHR 13H - FEB 11, 2020

Act. BW	Act. WW	Act. YW	CE	BW	WW	YW	MCE	MWW	Milk	API	TI
81	-	-	-	-	-	-	-	-	-	-	-

S A V RESOURCE 1441

♂ **BROOKING INTERSTATE 4048**
 TLA BEAUTY 6R

WFL WESTCOTT 24C

♂ **WSH HOOP AND HAULER**
 RF SCREAM 215Z

- I have been breeding every heifer for the last number of years to an angus bull who is the son of the Beauty 6R cow. He makes beautiful uddered females and I have sold many 1/2 blood bulls from him as well.
- This heifer is the daughter of a flush I performed on the famed Scream 215Z. Her dam is a beautiful young red blazed face cow that will be a cornerstone for me for many years and was flushed extensively this past year.
- This 1/2 blood has so much maternal strength and predictability bred in. I never intended to sell her.

lot 29

\$2,500
BRISTOL VIEW



BOHRS ANCHORAGE NORA 313H

PB Simm - Polled - 1318930 - BOHR 313H - FEB 24, 2020

Act. BW	Act. WW	Act. YW	CE	BW	WW	YW	MCE	MWW	Milk	API	TI
78	-	-	3.6	5.8	80.6	125.4	1.7	62.1	21.8	122.87	70.78

WLB BOUNTY HUNTER 365C
S: **WLB BLAZE ON 365C 361E**
JFRS MS 43Y \ HP-HOP

WLB BIG NORTHERN 52Z 4161D
D: **WLB 4161D NORA 360F**
WLB IIIU GENENE 413X \ HP-HOP

- 313H is a black baldy out of the \$20,000 Blaze On that sold to Ferme Gagnon and this hairy, stout, neat made female is nice in her type
- Longevity is on her side as her elder grandam produced until she was 12 and her hard working 2-year-old dam was good udder, nice feet and outproduced herself on her first try with this cool heifer

lot 30

\$3,000
MIKE CATTLE
CO



ANCHORAGE FUTURE MARKER 315H

PB Angus - 2150439 - BOHR 315H - JAN 26, 2020

Act. BW	Act. WW	Act. YW	CE	BW	WW	YW	MCE	MWW	Milk	API	TI
84	-	-	2.5	4.4	64	110	5	-	22	-	-

S A V RENOWN 3439
S: **SCHIEFELBEIN RHOMBUS 4937**
FROSTY ELBA 954

MICH MOB BOSS 1425
D: **HLC FUTURE MARKER 380F**
GGA FUTURE MARKER 9Z

- We were a notch short on grass this past summer so our good friend Snides bailed us out and we were able to send some pairs to Viking. One thing leads to another and he took a liking to this pairing of open heifers so we agreed to offer them in the sale and we are appreciative to being involved in this event.
- Predictable pedigree with Renown, Upward, Final Answer, New Design, Classen represented in a long, hairy, smooth and will transition into a nice production female

lot 31

\$2,250
GET-A-LONG
STOCK FARM



SNIDER'S DARLIN 11H

1/2 SimAngus - Polled - Pending - DEB 11H - MAR 8, 2020

Act. BW	Act. WW	Act. YW	CE	BW	WW	YW	MCE	MWW	Milk	API	TI
78	-	-	-	-	-	-	-	-	-	-	-

♂ **ANGUS**

DEEG MR 76B
 ♂ **OUTLAW MS COBRA 746E**
 TESS MS RED 7Z

This heifer is out of a phenotypically correct Outlaw cow that my father, Pete Knight, purchased as a heifer calf. Her sire is a great angus calving ease bull that has put a fancy spin on this pretty heifer. Structurally correct, with loads of hair, this heifer would be fantastic for a junior project or front pasture female, becoming a foundation cow in anyone's herd. Solid black in colour, solid bodied, and a solid investment, have a look.

lot 32

\$6,000
SPRING CREEK
SIMMENTALS



WSF HEATHER 202H

PB Simm - Polled - 1341305 - WSF 202H - JAN 3, 2020

Act. BW	Act. WW	Act. YW	CE	BW	WW	YW	MCE	MWW	Milk	API	TI
83	-	-	9.9	2.2	73.4	101.9	10.3	65.1	28.4	129.74	69.66

KOP CROSBY 137W
 ♂ **ERIXON POWER PLAY 102Y**
 ERIXON LADY 2P

SPRINGCREEK LINER 56U
 ♂ **SPRINGCREEK B GOLD 44A**
 SPRINGCREEK B GOLD 18X

- I purchased this cow from Brian at Springcreek. She was the high selling bred red cow and an own daughter of 56U
- 44A is a powerful cow with a great udder. This heifer will have mass and maternal strength bred right in.
- Super stout, lots of hair and a pedigree that will perform

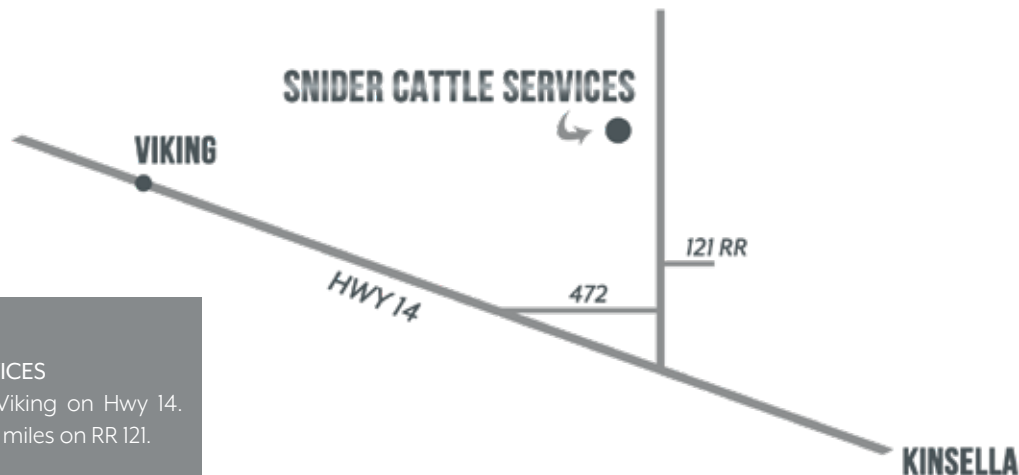


BOHRSON
MARKETING SERVICES

RR4 SITE 7 BOX 28
OLDS, AB T4H 1T8



RETURN POSTAGE GUARANTEED
PORT DE RETOUR GARANTI



**YOU'RE
WELCOME TO
COME TOUR
THE BULLS!**

DIRECTIONS

SNIDER CATTLE SERVICES

-Go 7 miles east of Viking on Hwy 14.
Turn North and go 1.5 miles on RR 121.