



**TER-RON**

**03.18.2021**

*Bull & Select Female Sale*



***SALE RESULTS***

***48 BULLS AVERAGED \$6,693***

***13 OPEN HEIFERS AVERAGED \$6,115***





Terry & Sharon

## Welcome

Welcome to our 16th annual bull & select female sale! Once again, we will be hosting the sale here at Ter-Ron Farms, just south of Forestburg. We would like to thank you for your interest in our program and taking the time to look through the catalog. We believe we have something for everyone and we work all year to develop a marketable product with our valued customers in mind.

2020 was certainly "one for the books" and I don't think anyone could have predicted a year ago that the world would look like this today. Although Covid has brought difficult struggles for many, it has given families the opportunity to spend more time together, and to just slow down. Life on the farm has remained relatively unchanged and we go about our day to day farming tasks as usual.

We are very excited about the group of bulls that we are presenting to you on March 18, 2021! It may sound cliché, but we feel this truly is our strongest and most consistent set of bulls, top to bottom, to date. Our selection of bulls this year ranges from sleep ease heifer bulls to performance cow bulls. The bull pen has red & black angus as well as a few select simmental, so really there is something for everyone. All bulls will have a complete semen evaluation prior to the sale.

Our heifer pen reflects the backbone of our philosophy of the importance of the momma cow; we have strived to bring you heifers that are deep sided, stout made, good uddered, and elegant fronted on a good solid foot. The heifers will be palpated before sale day and will be ready for breeding season.

We would like to thank all of our customers over the years, both the repeat buyers and the ones who are brand new to our program. It is very rewarding to see the strong interest buyers and bidders have shown in our program. We are so grateful for each and every buyer, bidder, friend and neighbour that made our past sales a success. We appreciate your support and truly enjoy doing business and developing friendships with all of you.

No one can predict what the Covid restrictions will be like in Alberta on March 18, so we strongly encourage you to come tour the bulls & heifers any time prior to sale day. Give Terry or Rob a call to discuss your needs and to arrange a visit. We are also working with the Bohrsen Marketing crew again this year so feel free to contact any of their representatives with any questions you may have or to help if you cannot make it sale day. Mark Holowaychuk and Roger Peters from OBI will be on hand sale day as well to assist our customers who might not be able to make it. As well, Mark Shologan from DLMS will be here sale day if you would prefer to bid online.

We really hope you can join us on Thursday, March 18 here at the farm. We can't wait to show you the cattle and catch up with friends old and new.



Kasey, Halley, Keely, Rob & Maureen

Sincerely, Terry & Sharon Adams  
Rob, Maureen, Halley, Keely & Kasey Adams

## Contact Us

**Terry**

Res: 780.582.2109

Cell: 780.385.1189

**Rob**

Res: 780.582.3720

Cell: 780.385.0849

Email: [smada@syban.net](mailto:smada@syban.net)

[www.ter-ronfarms.com](http://www.ter-ronfarms.com)



## *Bull & Select Female Sale*

**Thursday, March 18, 2021 - 1:00 p.m.**

**at Ter-Ron Farms - Forestburg, AB**

(3 miles South of Forestburg on RR 152 - map on page 4)

### **Sale Staff**

#### **Auctioneer**

Ryan Dorran  
403.507.6483

#### **Ringmen**

Taylor Richards - 306.821.4169  
Bryon Wolters - 780.581.8396

### **SALE DAY PHONE**

Please Call Terry or Rob's Cell phone

*On Offer*

**51 - Angus Bulls**

**49 - Yearlings**

**2 - Two Year Olds**

**8 - Simmental Bulls**

**7 - Yearlings**

**1 - Two Year Old**

**14 - Red Angus Heifers**

### **TER-RON FARMS**

**Terry Adams**

**Res: 780.582.2109**

**Cell: 780.385.1189**

**Rob Adams**

**Res: 780.582.3720**

**Cell: 780.385.0849**

### **BUYER REPRESENTATIVES**



**BOHRSON**  
MARKETING SERVICES

**Scott Bohrson**  
403.370.3010

**Rob Voice**  
306.270.6082

**Taylor Richards**  
306.821.4169

**Jaxon Payne**  
306.830.0456



**Mark Holowaychuk**  
403.896.4990

**Roger Peters**  
403.828.9815



**Gary Rairdan**  
Cell 403-740-6823

## **Can't make it to the sale?** **Internet Bidding Available.**

To view this sale visit [www.dlms.ca](http://www.dlms.ca), Fill out the registration form located under registration and sign-up for your free user account and select a username and password.

**BIDDERS** - To be approved as a bidder, Log in to [dlms.ca](http://dlms.ca) and click BUYER APPROVAL tab, select the sale you are interested in bidding at and click sign up.

**For more information**

**Call DLMS Reps:**

**Mark Shologan - 780-699-5082 or**  
**DLMS Purebred Team 780.991-3025**

**DLMS**  
[www.dlms.ca](http://www.dlms.ca)

### **Sight Unseen Purchase Guarantee**

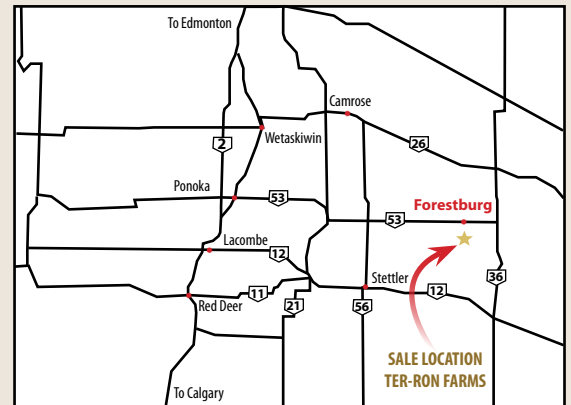
If you are unable to attend our sale, we have a "Sight Unseen Purchase Plan". Under this program you will tell us about your needs and price and we will then have a buyer of your choice purchase the bull on your behalf. Upon delivery, if you are not satisfied, we still own the bull.





**Forestburg, AB**

**3 miles South of Forestburg on RR 152**



### Photographer

Grant Rolston Photography  
403.593.2217

### Canadian Farm Insurance Corp.

Agent Jill Wildman  
Ph: 780-305-1146

*All bulls staying at the farm must be  
insured by the purchaser.*

### Accommodations

Please do not hesitate to call Maureen Adams  
to assist you with accommodations.

**Stettler:** Super 8 - 403 742 3391  
Ramada - 403 742 6555

**Camrose:** Super 8 - 780 672 7303  
Ramada - 780 672 5220

A few rooms are available at Forestburg Motor Inn,  
please let Maureen know if you would like one of these.



**2020  
High Selling  
Bulls**

**Red Ter-Ron Showdown 9G  
High Selling Angus Bull  
sold to SSS Red Angus**



**Ter-Ron Rio 903G  
High Selling Simmental Bull  
sold to Walsh Farms**



**2020  
High Selling  
Heifer**

**Red Ter-Ron Sandy 51G  
sold to Kerri Lynn McFaul**



Andy & Atwell Niederer - Volume Buyer - Rexburg, Idaho





3 miles south of Forestburg, AB resides one of the most impressive cowherds in the business and it is backed by some of the best people in the industry. The Adams' are truly some of the most astute cattlemen in the business and their passion for studying pedigrees, investing in the best genetics, raising a high quality product for their loyal customers is to be commended. They are as progressive as anyone in sourcing front end females to boast their already impressive cowherd and when it comes to buying the next herd bull, they take it extremely serious and spare no expense in purchasing the very best. Aside from their cattle knowledge, they truly are among the very best people to do business with and this hard working family is a prime example of why this industry is so enjoyable with the people in it.

They have done it again in 2021 and this set of same cattle is impressive to say the least from front to back. They are world-renowned for their Red Angus program as the maternal power is there plus amount of natural dimension, pay weight and red meat they breed into their cattle is admirable. When touring their program throughout the year, their production cowherd are the type that is so memorable with the maternal strength and power they have is impressive to say the least and they bring in a set of high quality calves year in and year out. This set of bulls is one of their most consistent to date with quality the entire way through and if you're seeking calving ease, power or a picture of both, you'll surely have a long list of bulls to invest in with confidence. The open heifers are intentionally selected from the top of their herd in order to pen them beside this awesome set of bulls to exhibit the strength of females you'll receive when buying a Ter-Ron Bull. No matter your budget, when you incorporate these bloodlines into your program, you are injecting predictable and highly profitable genetics that will increase your bottomline.

On Thursday, March 18 plan to come to Forestburg for the quality cattle and stay for the great hospitality put forth from the Adams'. If you can't make it sale day, feel free to visit with them before sale day and view the bulls on the farm at anytime that suits your schedule. We have confidence in this program and the people behind it that you can invest with confidence to receive bulls and/or females that will give you a strong ROI. If you can't make it sale day and ourselves at BMS can be of assistance, feel free to reach out and we will represent your needs in a professional and confidential manner. We look forward to visiting with you at Ter-Ron come sale day as it is one of the strongest offering of quality cattle we have the privilege to sell every year.

Best regards,

The Bohrson Marketing team

**Scott Bohrson**  
403.370.3010

**Taylor Richards**  
306.821.4169

**Rob Voice**  
306.270.6082

**Jaxon Payne**  
306.830.0456

✓ All bulls will be  
**SEMEN TESTED**  
and vet inspected.

✓ **SALE DAY WEIGHTS and**  
**SCROTAL MEASUREMENTS**  
will be provided sale day.

**SALE VIDEOS**  
[www.ter-ronfarms.com](http://www.ter-ronfarms.com)  
OR [cattlevids.ca](http://cattlevids.ca)

### Calving Ease Legend

Calving Ease is often related to birth weight of a bull. This is partly true but there are other factors that influence calving ease. The dam and her management are at least 50% of calving ease. Also, the consistency of the birth weights of the sire and dam should be considered. Nutrition, gestation and environment all influence birth weight. We have rated each bull in the sale based on the information we have.

- \*\*\* Should produce minimal problems when bred to moderate size first calf heifers
- \*\* Recommend for second calvers or smaller framed cows 1100 lbs to 1300 lbs
- \* Recommend for mature cows 1400 lbs plus

### Delivery Options

- A. If you wish you may take your cattle home sale day or within a week and receive a \$100 discount per purchase.
- B. Bulls and Females will be delivered free of charge up to 250 miles, further at cost. Delivery usually commences 2-3 weeks after sale.
- C. Bulls may be kept at Ter-Ron free of charge until May 1, after that, \$3.00 per day will be charged and animals must be picked up by the purchaser.

\*\*\*\*All bulls staying at the farm must be insured by the purchaser - see page 4 for insurance.



# REFERENCE SIRES



Mark Cameron VP of Nutrition Doug Roxburgh Beef Consultant Joe McLean Beef Consultant Trevor Hamilton Beef Consultant Brayden Schmidt Beef Advisor Greg Armson Beef Consultant Kelly Resler Beef Consultant Tom McNeely Co-Founder Ryley Noble Beef Advisor

It's a pleasure working with all three generations at Ter Ron. It's a toss-up who brings more energy to the cattle debates, the young ladies or Grandpa. You never have to worry about the quality of bulls on offer. The cow herd utilizes a customized mineral program that is balanced throughout the year, which supports proper bull calf development from a young age. The bull feeding program is built to maximize forage utilization and gut health; they are developed on grass with their moms and then moved

onto a balanced TMR that promotes lean muscle. The bulls are challenged with a foraged based TMR to help them develop to their genetic potential and organic minerals are used to ensure proper immune function and overall health. Ter Ron uses a total nutrition program on their entire operation, ensuring optimal performance of the cattle. If you have any questions about the nutrition of the sale bulls, please feel free to call. Best of luck on sale day!



**Tom McNeely**  
Co-Founder  
(780) 679-7220  
tomj.mcneely@bullseyefeeds.ca



*Grad 2020*



## RED TER-RON RIDDLER 57F

HAL 57F 2037430

January 24 2018 BW: 81 lbs

Adj 205: 847 lbs Adj 365: 1356 lbs

RED U-2 RECKONING 149A  
**RED U-2 RENOWN 193C**  
RED U-2 ENVIOUS 147X

RED SSS STAUNCH 64Y  
**RED KENRAY BARONESS 13C**  
RED K F BARONESS 57Z

RED U-2 RECON 192Y  
RED U-2 ANEXA 271Y  
RED U-2 DYNAMO 7021T  
RED U-2 ENVIOUS 216M  
RED SSS OLY 554T  
RED SSS SCAARA 429W  
RED NCJ MYSTIFIED 16X  
RED K F BARONESS 58R

BW: 4.2 WW: 63 YW: 89 Milk: 27

- Riddler is the high selling bull from our 2019 bull sale to Wheeler Stock Farm in SK and Lodoen Cattle Co in North Dakota for \$37000
- Moderate, structurally sound sire with lots of muscle shape and eye catching style
- Our heaviest used sire, with a very consistent group in both the bull and heifer pen
- Dam has been a very consistent producer, with a daughter selling to River's Edge Farms for \$14000, another to Elkwater Farming, and a son sells as Lot 92H in this sale
- Owned with Wheeler Stock Farm and Lodoen Cattle Co.



Red Kenray Baroness 13C  
Dam of Riddler





## RED COMBEST JUGGERNAUT 1613D

CLFX 1613D 1948707 February 27 2016  
BW: 86 lbs Adj 205: 952 lbs Adj 365: 1316 lbs

RED WHEEL ALLIANCE 22U  
**RED BAR-E-L ANTHEM 46A**  
RED BAR-E-L FRADO 209U

RED YY RED KNIGHT 640F  
**RED BAR-E-L MEG 85N**  
RED BAR-E-L MEG 035G

RED NORTHLINE ATLANTIC CITY  
RED WHEEL AUBURN 2K  
RED SSS BOOM TOWN 260D  
RED BAR-E-L SCARLET 193S  
RED YY 23L TOPPER 408D  
RED TOP GOLDIE 40U  
RED GLESBAR PATRIOT 20D  
RED CUMNOCK MEG 776X

**BW: 4.3 WW: 53 YW: 75 Milk: 23**

- Juggernaut was purchased as the high selling bull in the Combest Red Angus sale with TNF Angus
- Massive, super soft made, square hipped, big footed, hairy

bull that looks great from all angles

- Unmatched performance, and maybe one of the most consistent bulls we have ever used
- Does an excellent job siring both sexes and daughters are great uddered, easy fleshing type cattle that are raising very good progeny
- Owned with TNF Angus & Combest Red Angus

## TER-RON CONTINENTAL 120D

RPAH 120D 1900795 February 08 2016  
BW: 98 lbs Adj 205: 736 lbs Adj 365: 1380 lbs

SAV HARVESTOR 0338  
**SAV INTERNATIONAL 2020**  
SAV EMBLYNETTE 5483

RED TER-RON TOUCHDOWN 8S  
**RED TER-RON AMBER 46W**  
RED TER-RON AMBER 28P

SAV HERITAGE 6295  
SAV EMBLYNETTE 7749  
SAV 8180 TRAVELER 004  
SAV EMBLYNETTE 7260  
RED SHODEREE DESTINY 114P  
RED TER-RON STARLET 8K  
RED TER-RON MAMBO 28K  
RED EV AMBER 28H

**BW: 3.2 WW: 57 YW: 86 Milk: 22**

- Continental was the outcross black/red carrier bull that sold at our 2019 sale for \$15000 to Circle G Angus
- Combines power, balance, thickness & depth with the strong maternal genetics of SAV International
- Near perfect feet in this impressive individual
- We are very happy with the daughters in production, we'd love to show them to you!!
- Mother is also the mother to the Bazinga bull
- Owned with Circle G Angus



## RED MRLA UPLOAD 165E

MRLA 165E 1955956 February 10 2017  
BW: 82 lbs Adj 205: 793 lbs Adj 365: 1384 lbs

SAV RESOURCE 1441  
**MRLA RELOAD 56C**  
RED MRLA MISS 641Y

RED MRLA TILT 80Z  
**RED MRLA MISS 4371B**  
RED MRLA MISS 345X

RITO 707 OF IDEAL 3407 707S  
SAV BLACKCAP MAY 4136  
RED BAR-E-L WARDEN 144W  
RED MRLA 793R  
RED LAZY MC CC DETOUR 2W  
RED MRLA MISS 678W  
RED SOO LINE MOMENTUM 7051  
RED MRLA MISS 269T

**BW: 2.3 WW: 43 YW: 77 Milk: 25**

- Purchased out of the McMillan sale for \$20000
- Upload offers outcross genetics to the Red Angus breed with the black sire SAV Resource 1441 being the grandsire of Upload 165E
- Progeny have length, muscle, and balance, along with calving ease
- We are calving the first daughters, and they have a feminine, productive maternal look and are very easy fleshing
- Owned with Six Mile Ranch





**\$9,250**  
**CORONA CREEK &**  
**DAVID MOHR**



**3H**

**RED TER-RON  
HIGH ROLLER 3H**

RPAH 3H 2158503 January 02 2020 CE \*\*  
TWIN BW: 72 lbs Act WW Oct 1: 940 lbs  
Adj 205: 724 lbs Adj 365: 1194 lbs

RED U-2 RENOWN 193C  
**RED TER-RON RIDDLER 57F**  
RED KENRAY BARONESS 13C

RED FLYING K JULIAN 72Y  
**RED TER-RON DIAMOND MIST 34B**  
RED TER-RON DIAMOND MIST 53X

RED U-2 RECKONING 149A  
RED U-2 ENVIOUS 147X  
RED SSS STAUNCH 64Y  
RED K F BARONESS 57Z  
RED TONGUE RIVER JUBILATION  
RED FLYING K TAMMY 15W  
RED U-2 BIG LEAGUE 544R  
RED TER-RON DIAMOND MIST 210U

**BW: 0.5 WW: 47 YW: 68 Milk: 26**

- First son to sell out of the \$37000 high selling Riddler bull who sold in our 2019 bull sale to Lodoen's and Wheeler Stock Farm.
- Dark cherry red, hairy, and with as much base and overall body capacity as any bull in the pen
- Combines the power of Riddler and the Diamond Mist 34B cow who has been a solid matron
- The 34B cow is also the mother to the \$17000 heifer calf that sold to Maria Taschuk at Red Roundup in 2019
- If you are looking for a low maintenance, solid footed bull out of a top producing cow, High Roller 3H might be a great choice



Dam of Lot 13H - Red Ter-Ron Lauryn 139W

Lot 13H in pasture



Maternal Sister to Lot 3H - Maria Taschuk  
Res Jr Heifer - Canadian Bull Congress 2020  
Bought out of Red Roundup 2019 - A Diamond Mist

**\$5,000**  
**ANDY NIEDERER**



**13H**

**RED TER-RON  
HORIZON 13H**

HFX 13H 2158333 January 08 2020 CE \*  
BW: 89 lbs Act WW Oct 1: 865 lbs  
Adj 205: 712 lbs Adj 365: 1194 lbs

RED U-2 RENOWN 193C  
**RED TER-RON RIDDLER 57F**  
RED KENRAY BARONESS 13C

RED BRYLOR PANAMA 69P  
**RED TER-RON LAURYN 139W**  
RED TER-RON LAURYN 018R

RED U-2 RECKONING 149A  
RED U-2 ENVIOUS 147X  
RED SSS STAUNCH 64Y  
RED K F BARONESS 57Z  
RED ZAMA PINE 517G  
RED THAT'LL DO RENEE 683H  
RED TER-RON MAMBO 28K  
RED TER-RON LAURYN 018K

**BW: 1.7 WW: 36 YW: 54 Milk: 25**

- Horizon is another impressive son of Riddler that has a herd bull look
- Super long sided, deep ribbed, wide topped, type of bull that has caught visitors attention
- Mother has been a great producing Panama daughter that has stood the test of time. She has produced sons that have sold to Scott Stewart and Circle G, Tyler Amundson, Dave Leavitt, and Bob Campbell
- 13H has been a favourite of ours since day one and is definitely worth a look. Should be an awesome female maker



**OUT OF SALE**



**21H**

**TER-RON  
CONTINENTAL 21H**

RPAH 21H 2158509 January 10 2020 CE \*  
BW: 94 lbs Act WW Oct 1: 950 lbs  
Adj 205: 756 lbs Adj 365: 1107 lbs

S A V INTERNATIONAL 2020  
**TER-RON CONTINENTAL 120D**  
RED TER-RON AMBER 46W

RED SIX MILE SURE SHOT 195Z  
**RED TER-RON ALICE 63C**  
RED TER-RON ALICE 31Y

S A V HARVESTOR 0338  
S A V EMBLYNETTE 5483  
RED TER-RON TOUCHDOWN 8S  
RED TER-RON AMBER 28P  
RED SIX MILE WIN-CHESTER 745W  
RED STEWART DIXIE 607S  
RED TER-RON REALDEAL 01W  
RED TER-RON ALICE 7T

**BW: 3.3 WW: 47 YW: 75 Milk: 28**

- Bigger framed Continental son that is deep ribbed, solid footed and has a real presence to him.
- We calved out a full sister to 21H and she is square uddered, has strong maternal instincts, and is like her brother.... strong footed!!
- If you are looking to add some size to your cowherd, 21H would be a great choice
- Black/red carrier

**RED TER-RON  
HARDBALL 24H**

RPAH 24H 2158520 January 14 2020 CE \*\*  
TWIN BW: 68 lbs Act WW Oct 1: 820 lbs  
Adj 205: 654 lbs Adj 365: 1138 lbs

RED U-2 RENOWN 193C  
**RED TER-RON RIDDLER 57F**  
RED KENRAY BARONESS 13C

RED FLYING K JULIAN 72Y  
**RED TER-RON OWYHEE 141B**  
RED LFE OWYHEE 608X

RED U-2 RECKONING 149A  
RED U-2 ENVIOUS 147X  
RED SSS STAUNCH 64Y  
RED K F BARNONESS 57Z  
RED TONGUERIVER JUBILATION  
RED FLYING K TAMMY 15W  
RED 5L NORSEMAN KING 2291  
RED YY OWYHEE 702T

**BW: 0.7 WW: 46 YW: 70 Milk: 26**

- Here is an eye catching Riddler son that is moderate in his frame, stout made, and has the consistent hip shape that Riddler seems to put in all his offspring
- Dam is a big volume Julian daughter that has a strong production record. Other sons of this quality dam have sold to Rodney Anderson and Borderline Contracting
- Full brother to Lot 25H
- TWIN

**\$3,750**

**GEOFFERY OBERG**



**24H**

**\$3,500**  
**FRIEND BROTHERS**



**25H**

**RED TER-RON  
HULK 25H**

RPAH 25H 2158515 January 14 2020 CE \*\*  
TWIN BW: 68 lbs Act WW Oct 1: 825 lbs  
Adj 205: 656 lbs Adj 365: 1244 lbs

RED U-2 RENOWN 193C  
**RED TER-RON RIDDLER 57F**  
RED KENRAY BARONESS 13C

RED FLYING K JULIAN 72Y  
**RED TER-RON OWYHEE 141B**  
RED LFE OWYHEE 608X

RED U-2 RECKONING 149A  
RED U-2 ENVIOUS 147X  
RED SSS STAUNCH 64Y  
RED K F BARNONESS 57Z  
RED TONGUERIVER JUBILATION  
RED FLYING K TAMMY 15W  
RED 5L NORSEMAN KING 2291  
RED YY OWYHEE 702T

**BW: 0.7 WW: 46 YW: 70 Milk: 26**

- Hulk has the same impressive look to him as his full brother, 24H
- A complete made, well balanced, bull that has a super attractive look to him
- Dam is a very nice uddered cow that just seems to do the job year after year
- TWIN



**\$9,000**

**CHOPPER K RED ANGUS**



Maternal sister  
to Lot 26H

**26H**

**RED TER-RON  
HANSEN 26H**

HFX 26H 2158336 January 14 2020 CE \*  
BW: 94 lbs Act WW Oct 1: 905 lbs  
Adj 205: 731 lbs Adj 365: 1267 lbs

S A V INTERNATIONAL 2020  
**TER-RON CONTINENTAL 120D**  
RED TER-RON AMBER 46W

RED THAT'LL DO UNBELIEVABLE 6U  
**RED TER-RON BOBBIE 122X**  
RED TER-RON BOBBIE 93T

S A V HARVESTOR 0338  
S A V EMBLYNETTE 5483  
RED TER-RON TOUCHDOWN 8S  
RED TER-RON AMBER 28P  
RED LAZY R C E L SENRO 405P  
RED THAT'LL DO MISS 57N  
RED BRYLOR PANAMA 69P  
RED TER-RON BOBBIE 093R

**BW: 4 WW: 46 YW: 80 Milk: 23**

- A red hided Continental son that's one of the most popular bulls in the pen
- Very soft sided, stout made, square topped bull that commands your attention as soon as you walk in the pen
- Super hairy and dark cherry red are great attributes of this pen favourite
- A maternal sister sold to Blairs.Ag out of this sale, and just recently she sold to Brylor Ranch in blair's fall production sale
- Grandmother is the mother to the \$36000 Wicked bull that previously sold to Lucky 7, the \$15000 Solo Cup bull that sold to David Mohr, and the \$10000 Sully bull that sold to Ellwood Farms
- Here is a very good bull out of a solid cow family!
- We would like to retain 100 units of semen on this bull to inject more of these solid genetics into our own program

**RED TER-RON  
HILLER 33H**

**33H**

HFX 33H 2158349 January 15 2020 CE \*  
BW: 97 lbs Act WW Oct 1: 935 lbs  
Adj 205: 774 lbs Adj 365: 1180 lbs

S A V INTERNATIONAL 2020  
**TER-RON CONTINENTAL 120D**  
RED TER-RON AMBER 46W

XO CROWFOOT CHALLENGER 354A  
**RED TER-RON MISTY 30D**  
RED TER-RON MISTY 64B

S A V HARVESTOR 0338  
S A V EMBLYNETTE 5483  
RED TER-RON TOUCHDOWN 8S  
RED TER-RON AMBER 28P  
XO CROWFOOT 0102X  
RED CROWFOOT GOLDETTE 6314S  
RED SIX MILE GAMER 224X  
RED TER-RON MISTY 14T

**BW: 3.8 WW: 52 YW: 87 Milk: 28**

- Hiller 33H is a bull that deserves a close look as he is not only a very solid bull, he reads very different on paper
- Sired by Continental and his dam is out of the Crowfoot Challenger son
- Soggy middled bull that really seems to put it all together... muscular, big nuted, square made and a real herd bull look
- 37H has been a stand out since he was a baby

**\$8,750**  
**HAWK RANCHING**



GRB

**40H**

**TER-RON  
HASHTAG 40H**

RPAH 40H 2158527 January 17 2020 CE \*  
BW: 89 lbs Act WW Oct 1: 895 lbs  
Adj 205: 729 lbs Adj 365: 1240 lbs

S A V INTERNATIONAL 2020  
**TER-RON CONTINENTAL 120D**  
RED TER-RON AMBER 46W

RED SIX MILE SURE SHOT 195Z  
**RED TER-RON AMBER 137B**  
RED TER-RON AMBER 65Z

S A V HARVESTOR 0338  
S A V EMBLYNETTE 5483  
RED TER-RON TOUCHDOWN 8S  
RED TER-RON AMBER 28P  
RED SIX MILE WIN-CHESTER 745W  
RED STEWART DIXIE 607S  
RED LAZY MC KINGMAN 16W  
RED TER-RON AMBER 28P

**BW: 2.2 WW: 40 YW: 65 Milk: 29**

- #Hashtag 40H is one of our favourite black/red carrier sons in the entire pen
- Solid made bull, with lots of length, thickness, and depth... he seems to be one of those that comes with all the bells and whistles
- Dam is an ideal made Angus cow that we would love to have a whole herd of
- 40H has been a real favourite amongst visitors
- Black/red carrier

**\$8,750**

**RYAN MCLAUGHLIN**



GRB



**OUT OF SALE**



**41H**

**TER-RON  
UPLOAD 41H**

HFX 41H 2158360 January 17 2020 CE \*\*\*

BW: 80 lbs Act WW Oct 1: 875 lbs

Adj 205: 747 lbs Adj 365: 1258 lbs

MRLA RELOAD 56C  
**RED MRLA UPLOAD 165E**  
RED MRLA MISS 4371B

BROOKING BANK NOTE 4040  
**RUST MISS SIERA 7202E**  
RED C-BAR SIERA Y27

S A V RESOURCE 1441  
RED MRLA MISS 641Y  
RED MRLA TILT 80Z  
RED MRLA MISS 345X  
CONNEALY EARNAN 076E  
E A ROSE 918  
RED SIX MILE AVIATOR 217P  
RED SIX MILE SIERA 257P

**BW: 0.8 WW: 46 YW: 71 Milk: 21**

- Black/red carrier Upload son out of a direct Banknote daughter
- This calving ease bull is smooth and well balanced, long spined and moderate, and would work well in your heifer pen!
- We are calving out our first Upload daughters and they are milky females with very nice udder structure

**RED TER-RON  
LONGMIRE 43H**

HFX 43H 2158362 January 18 2020 CE \*\*

BW: 79 lbs Act WW Oct 1: 920 lbs

Adj 205: 777 lbs Adj 365: 1297 lbs

RED U-2 RENOWN 193C  
**RED TER-RON RIDDLER 57F**  
RED KENRAY BARONESS 13C

RED TER-RON MAMBO 28K  
**RED DIAMOND T MONIQUE 9906**  
RED DIAMOND MONIQUE 70'02

RED U-2 RECKONING 149A  
RED U-2 ENVIOUS 147X  
RED SSS STAUNCH 64Y  
RED K F BARNONESS 57Z  
RED YY RED KNIGHT 640F  
RED ALDER ABG STAR DUST 8G  
RED BASIN SENSATION 702E  
RED TOWAW MONIQUE 2K

**BW: 0.4 WW: 44 YW: 72 Milk: 24**

- Longmire is a definite stud who looks great from all angles!!
- 43H has such a presence about him... he's naturally wide based, stout as they come and has lots of rib shape & fleshing ability. He is bred to be a herd bull!!
- Mother is an excellent uddered Mambo cow that is a donor cow type. She is also the mother to Banker 20G, a cool Banknote black/red carrier son that we retained to use in our herd because of his outcross genetics and overall quality. 906W is also the grandmother to the Hustle two year old bull that sold to long time customers and friends, the Hadwin's.
- We feel Longmire has a great future ahead of him and would like to retain 100 units of semen for our own use.
- Definite herd bull prospect here folks!!

**\$4,500**

**GREG GRODAES**



Red Diamond T Monique 9906 - Dam to Lot 43H



Ter-Ron Banker 20G - Maternal brother to Lot 43H



**\$4,000**  
**DAYMENT RANCH**



**47H**

**RED TER-RON  
HENCHMAN 47H**

RPAH 47H 2158532 January 18 2020 CE \*  
BW: 87 lbs Act WW Oct 1: 800 lbs  
Adj 205: 723 lbs Adj 365: 1199 lbs

RED U-2 RENOWN 193C  
**RED TER-RON RIDDLER 57F**  
RED KENRAY BARONESS 13C

RED COMBEST JUGGERNAUT 1613D  
**RED TER-RON DIAMOND MIST 47F**  
RED TER-RON DIAMOND MIST 191Z

RED U-2 RECKONING 149A  
RED U-2 ENVIOUS 147X  
RED SSS STAUNCH 64Y  
RED K F BARNONESS 57Z  
RED BAR-E-L ANTHEM 46A  
RED BAR-E-L MEG 85N  
RED TER-RON REALDEAL 01W  
RED TER-RON DIAMOND MIST 290R

**BW: 4.7 WW: 54 YW: 79 Milk: 23**

- Henchman is a dark, cherry red Riddler son out of a first calf Juggernaut daughter. We are very excited about what these Juggernaut females are going to do for our herd moving forward
- An easy moving, stout made, and super good footed bull that will make some great replacement females
- Henchman's dam, 47F, is from our beloved Diamond Mist cow family that really seems to do it every year. We feel that 47F has a very bright future in our herd

**RED TER-RON  
HALFBACK 53H**

**53H**

HFX 53H 2158370 January 20 2020 CE \*  
BW: 98 lbs Act WW Oct 1: 975 lbs  
Adj 205: 803 lbs Adj 365: 1347 lbs

RED U-2 RENOWN 193C  
**RED TER-RON RIDDLER 57F**  
RED KENRAY BARONESS 13C

RED TER-RON REALDEAL 01W  
**RED TER-RON LAURYN 56Y**  
RED TER-RON LAURYN 918N

RED U-2 RECKONING 149A  
RED U-2 ENVIOUS 147X  
RED SSS STAUNCH 64Y  
RED K F BARNONESS 57Z  
RED TER-RON RELOAD 703T  
RED K ADAMS SAVANAH 11S  
RED TER-RON CINCH 910L  
RED TER-RON LAURYN 918J

**BW: 3.9 WW: 61 YW: 89 Milk: 18**

- Halfback has been a pen favourite of many of the visitors to the farm
- Very long spined, with lots of dimension, hair and foot quality
- Dam is an ideal made angus cow that is level uddered, solid footed, and is a very consistent producer. She is also the grand dam to Lot 70H



**\$10,000**  
**RAUL ROMO**

**54H**

**RED TER-RON  
HIPSTER 54H**

RPAH 54H 2158535 January 20 2020 CE \*  
BW: 95 lbs Act WW Oct 1: 975 lbs  
Adj 205: 802 lbs Adj 365: 1356 lbs

S A V INTERNATIONAL 2020  
**TER-RON CONTINENTAL 120D**  
RED TER-RON AMBER 46W

RED LAZY MC KINGMAN 16W  
**RED TER-RON DIAMOND MIST 100B**  
TER-RON DIAMOND MIST 105Y

S A V HARVESTOR 0338  
S A V EMBLYNETTE 5483  
RED TER-RON TOUCHDOWN 8S  
RED TER-RON AMBER 28P  
RED RMJ REDMAN 1T  
RED LAZY MC MISS 67R  
RED TER-RON REALDEAL 01W  
BIG SKY DIAMOND MIST 290

**BW: 2.9 WW: 54 YW: 82 Milk: 27**

- Dark red Continental son that commands some attention with his length, depth and extra style
- Hipster was one of our heaviest bulls when we weighed the bulls at weaning time last fall. He will add some pay weight to your calf crop
- Dam is an attractive, solid made, Kingman daughter that stems from the Diamond Mist cow line

**\$6,750**  
**KEN CROOKES**





**\$11,000**

**NICKLASON STOCK  
FARMS**



HFX 112E  
Maternal Brother to  
Lot 57H



**RED TER-RON  
UPSTATE 60H**

**60H**

RPAH 60H 2158542 January 21 2020 CE \*\*\*

BW: 80 lbs Act WW Oct 1: 815 lbs

Adj 205: 709 lbs Adj 365: 1148 lbs

MRLA RELOAD 56C  
**RED MRLA UPLOAD 165E**  
RED MRLA MISS 4371B

RED TWIN HERITAGE HUSTLE 25A  
**RED TER-RON DIAMOND MIST 99E**  
RED TER-RON DIAMOND MIST 34B

S A V RESOURCE 1441  
RED MRLA MISS 641Y  
RED MRLA TILT 80Z  
RED MRLA MISS 345X  
RED HOWE HUSTLE 13X  
RED TWIN HERITAGE CHER 293S  
RED FLYING K JULIAN 72Y  
RED TER-RON DIAMOND MIST 53X

**BW: 0.7 WW: 32 YW: 55 Milk: 24**

- Upstate is a low birth weight Upload son that really puts a lot of good things together in a neat package... he's sound, long spined and cherry red in colour and has a real nice look to him
- Dam is a super nice uddered Hustle daughter that comes from the Diamond Mist cow line. A full brother sold to Mike & Brenda Wheeler of Vanderhoof BC in last year's sale
- One of the premier calving ease bulls in the entire offering

**57H**

**RED TER-RON  
HOUSTON 57H**

HFX 57H 2158375 January 21 2020 CE \*

BW: 92 lbs Act WW Oct 1: 840 lbs

Adj 205: 696 lbs Adj 365: 1203 lbs

RED U-2 RENOWN 193C  
**RED TER-RON RIDDLER 57F**  
RED KENRAY BARONESS 13C

RED TER-RON RELOAD 703T  
**RED TER-RON BRANDY 15X**  
RED TER-RON BRANDY 911S

RED U-2 RECKONING 149A  
RED U-2 ENVIOUS 147X  
RED SSS STAUNCH 64Y  
RED K F BARNONESS 57Z  
RED TER-RON FULLY LOADED 540R  
RED TER-RON SAMARIA 103N  
RED LCC MAJOR LEAGUE A502M  
RED BRYLOR BRANDY 11C

**BW: 3.7 WW: 55 YW: 80 Milk: 18**

- The consistency of these Riddler sons is really quite amazing
- Houston is dark cherry red in colour with an exceptional hair coat and is one of the stoutest, biggest hipped bulls in the entire pen. All of this on a solid, dark foot
- Dam has been a very productive Reload daughter that performs year after year. Sons have sold to John Schmidt and Letniaks.

**\$8,000**

**MARCHES RED  
ANGUS**



**62H**

**TER-RON  
HANCOCK 62H**

RPAH 62H 2158546 January 21 2020 CE \*\*\*

BW: 74 lbs Act WW Oct 1: 775 lbs

Adj 205: 638 lbs Adj 365: 1145 lbs

RED RUST BULL 31B  
**RED SIX MILE FIFTH SENSE 43F**  
RED SIX MILE MINERVA 584B

TER-RON PARK PLACE 18Y  
**TER-RON ALICE 32A**  
RED TER-RON ALICE 71P

RED C-T DKK DUKE 1100  
RED BKT LARKEISA M288 CK  
RED SIX MILE RAWHIDE 222X  
RED SIX MILE MINERVA 3Y  
HF TIGER 5T  
RED TER-RON GOLDIE 240L  
RED TER-RON TITANIC 011M  
RED TER-RON ALICE 07L

**BW: -3 WW: 30 YW: 54 Milk: 24**

- Here's a heifer bull with a moderate 74 lb birth weight
- Out of the Six Mile Fifth Sense bull who we selected to use because of his low birth and high growth numbers and overall quality. We ended up getting quite a few more heifers than bulls from Fifth Sense, but we are very happy with the value of both sexes
- Dam is a very solid, black hided Park Place daughter that has loads of volume, udder quality, and tremendous feet
- Other sons of the 32A cow have sold to Byron Clarke, Andy Niederer, and Ken Crookes
- Lots of maternal quality with this bull
- Black/red carrier

**\$4,000**

**AL & CINDY BATT**





**\$10,500**  
**REVERSE GC**



**65H**

**RED TER-RON  
VISION 65H**

HFX 65H 2158376 January 21 2020 CE \*\*\*

BW: 81 lbs Act WW Oct 1: 920 lbs

Adj 205: 758 lbs Adj 365: 1013 lbs

RED RUST BULL 31B  
**RED SIX MILE FIFTH SENSE 43F**  
RED SIX MILE MINERVA 584B

RED SIX MILE SURE SHOT 195Z  
**RED TER-RON LAURYN 151B**  
RED TER-RON LAURYN 56Z

RED C-T DKK DUKE 1100  
RED BKT LARKEISA M288 CK  
RED SIX MILE RAWHIDE 222X  
RED SIX MILE MINERVA 3Y  
RED SIX MILE WIN-CHESTER 745W  
RED STEWART DIXIE 607S  
RED TER-RON REALDEAL 01W  
RED TER-RON LAURYN 018S

**BW: -0.7 WW: 45 YW: 64 Milk: 28**

- Another Fifth Sense bull that would make a great calving ease option
- Fifth Sense was used as an AI sire to create some heifer bulls, unfortunately we only got two bulls this year
- Very smooth made, athletic, and long spined type of bull
- Dam has always been a cow that has the ability to bring a calf to get excited about. One of her best is working at Jensen Red Angus at Leader SK and another at Walsh Farms in ON. This past fall, a daughter sold at Red Roundup to Rafter SJ at Montney BC. She was the high selling bred heifer that day

**RED TER-RON  
HIGHLAND 70H**

**70H**

HFX 70H 2158382 January 22 2020 CE \*\*

BW: 88 lbs Act WW Oct 1: 830 lbs

Adj 205: 689 lbs Adj 365: 1138 lbs

RED U-2 RENOWN 193C  
**RED TER-RON RIDDLER 57F**  
RED KENRAY BARONESS 13C

RED FLYING K JULIAN 72Y  
**RED TER-RON LAURYN 59A**  
RED TER-RON LAURYN 56Y

RED U-2 RECKONING 149A  
RED U-2 ENVIOUS 147X  
RED SSS STAUNCH 64Y  
RED K F BARNONESS 57Z  
RED TONGUERIVER JUBILATION  
RED FLYING K TAMMY 15W  
RED TER-RON REALDEAL 01W  
RED TER-RON LAURYN 918N

**BW: 2.1 WW: 46 YW: 71 Milk: 22**

- A moderate framed Riddler son that is hard to poke a hole in. He commands your attention and looks good from all angles
- We really appreciate the way this bull puts it all together, right from his nice skull, thickness and rib shape combined with his overall softness. He really is the whole package
- Dam is a cow you wish you had a whole herd of... moderate, perfect uddered, solid footed and keeps herself in great shape at all times
- Maternal brother sold in last year's sale to Corona Creek & David Mohr

**\$8,500**  
**MELBERN HOLDINGS**



Full brother to Lot 73H - Red Ter-Ron Grinch 6G



Maternal sister to Lot 65H - Red Ter-Ron Lauryn 6G



**\$8,500**

**MULLEN LAND & CATTLE**



**73H**

**RED TER-RON  
HOWIE 73H**

HFX 73H 2158386 January 23 2020 CE \*

BW: 104 lbs Act WW Oct 1: 995 lbs

Adj 205: 829 lbs Adj 365: 1236 lbs

RED BAR-E-L ANTHEM 46A  
**RED COMBEST JUGGERNAUT 1613D**  
RED BAR-E-L MEG 85N

RED ROYAL K-C DUKE 08R  
**RED TER-RON BRANDY 175Z**  
RED TER-RON BRANDY 211M

RED WHEEL ALLIANCE 22U  
RED BAR-E-L FRADO 209U  
RED YY RED KNIGHT 640F  
RED BAR-E-L MEG 035G  
RED SPRING CREEK HI HO 8K  
RED ROYAL DUCHESS 08L  
RED LAZY MC DIVIDE 8J  
RED TER-RON BRANDY 11J

**BW: 5 WW: 48 YW: 80 Milk: 23**

- Performance oriented Juggernaut son. The Juggernauts have been very popular in previous years
- 829 lb adj. yearling weight for this massive bull
- Masculine in his design, soft sided, lots of rib shape with a stout hip. Very sound from the ground up
- Dam has been a very good producer with sons going to Sieger's and ELC Cattle
- One heck of a good bull here!!



Red Ter-Ron Magician 67G  
Maternal brother to Lot 73H

**74H**

**RED TER-RON  
UPSTART 74H**

RPAH 74H 2158550 January 23 2020 CE \*\*\*

BW: 76 lbs Act WW Oct 1: 835 lbs

Adj 205: 760 lbs Adj 365: 1072 lbs

MRLA RELOAD 56C  
**RED MRLA UPLOAD 165E**  
RED MRLA MISS 4371B

RED COMBEST JUGGERNAUT 1613D  
**RED TER-RON SERENA 123F**  
RED LFE SERENA 190X

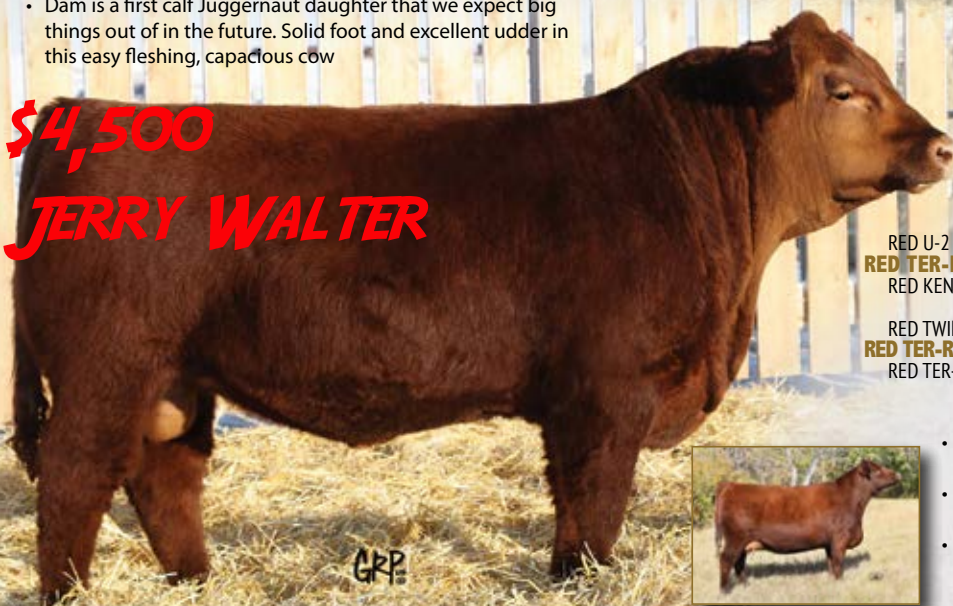
S A V RESOURCE 1441  
RED MRLA MISS 641Y  
RED MRLA TILT 80Z  
RED MRLA MISS 345X  
RED BAR-E-L ANTHEM 46A  
RED BAR-E-L MEG 85N  
RED U-2 DYNAMO 7021T  
RED LFE SERENA 123T

**BW: 1.3 WW: 38 YW: 63 Milk: 25**

- Upload calving ease bull that could be used either way, on cows or heifers
- Modest 76 lb BW with a small head, smooth shoulder, yet exhibits ample performance with his overall depth and round hip shape
- Dam is a first calf Juggernaut daughter that we expect big things out of in the future. Solid foot and excellent udder in this easy fleshing, capacious cow

**\$4,500**

**JERRY WALTER**



**75H**

**RED TER-RON  
MILWAUKEE 75H**

RPAH 75H 2179513 January 23 2020 CE \*

ET BW: 92 lbs Act WW Oct 1: 795 lbs

Adj 205: 662 lbs Adj 365: 1190 lbs

RED U-2 RENOWN 193C  
**RED TER-RON RIDDLER 57F**  
RED KENRAY BARONESS 13C

RED TWIN HERITAGE HUSTLE 25A  
**RED TER-RON DIAMOND MIST 138D**  
RED TER-RON DIAMOND MIST 210A

RED U-2 RECKONING 149A  
RED U-2 ENVIOUS 147X  
RED SSS STAUNCH 64Y  
RED K F BARNONESS 57Z  
RED HOWE HUSTLE 13X  
RED TWIN HERITAGE CHER 293S  
RED FLYING K JULIAN 72Y  
RED TER-RON DIAMOND MIST 290P

**BW: 2.9 WW: 44 YW: 71 Milk: 23**

- One of 3 full ET brothers out of Riddler and our Diamond Mist 138D cow
- We really appreciate the hip shape, width of top and overall stoutness of this bull
- The 138D cow is a past Canadian Western Agribition Reserve Champion female. She is a real nice cow to analyze with her well suspended milky udder, massive rib shape, and beautiful feminine look
- Full brothers sell as Lot 91H & 96H



Dam to Lot 73H  
Red Ter-Ron Diamnd Mist 138D



**\$8,000**

**OTILIO VALDES CORREA**



**76H**

**RED TER-RON  
HAMMER 76H**

HAL 76H 2157377 January 23 2020 CE \*  
BW: 94 lbs Act WW Oct 1: 865 lbs  
Adj 205: 721 lbs Adj 365: 1165 lbs

MRLA RELOAD 56C  
**RED MRLA UPLOAD 165E**  
RED MRLA MISS 4371B

RED TER-RON REALDEAL 01W  
**RED K ADAMS ZARIA 091Z**  
RED K ADAMS UNDECIDED 291U

S A V RESOURCE 1441  
RED MRLA MISS 641Y  
RED MRLA TILT 80Z  
RED MRLA MISS 345X  
RED TER-RON RELOAD 703T  
RED K ADAMS SAVANAH 11S  
RED TER-RON PIRATE 135S  
RED K ADAMS SCARLETT 299S

**BW: 3 WW: 40 YW: 57 Milk: 26**

- Upload son that you really have to appreciate for the cow power lineage he offers with the great Zaria 091Z behind him
- Hammer 76H is a bull you really have to appreciate for the amount of middle third he exemplifies. He is so soft made, flexible in his movement, stout and with a cherry red hair coat
- Dam has been a previous Farm Fair and Agribition Champion as well as an Alberta Supreme Champion that won Halley a truck in 2015!!
- Other top sons of Zaria 091Z have sold to Wood Coulee, Corona Creek, Goads & David Mohr, Blairs & Juan Debernardi, as well as Adair Angus
- As I write these footnotes, 76H's full sister has calved and I don't know what you'd change about her udder structure. She looks like she is going to be a future donor



Udder on full sister  
of Lot 76H



Dam of Lot 76H - Red K Adams Zaria 091Z



Maternal Brother to Lot 76H - Red Ter-Ron Rosco 10F

**RED TER-RON  
HOUDINI 82H**

**82H**

RPAH 82H 2158562 January 24 2020 CE \*\*  
BW: 89 lbs Act WW Oct 1: 790 lbs  
Adj 205: 697 lbs Adj 365: 1199 lbs

MRLA RELOAD 56C  
**RED MRLA UPLOAD 165E**  
RED MRLA MISS 4371B

RED U-2 REVERENCE 198C  
**RED TER-RON DIAMOND MIST 2E**  
RED TER-RON DIAMOND MIST 83B

S A V RESOURCE 1441  
RED MRLA MISS 641Y  
RED MRLA TILT 80Z  
RED MRLA MISS 345X  
RED U-2 RECKONING 149A  
RED U-2 LAKOTA 427Y  
RED SIX MILE SURE SHOT 195Z  
RED TER-RON DIAMOND MIST 191Z

**BW: 2.3 WW: 29 YW: 48 Milk: 23**

- As you analyze this bull, you really appreciate the way he is put together, with his smooth balanced look, depth of rib, and overall thickness. He just glides as he moves
- Dam is a young Reverence daughter that is attractive, large bodied, and real solid footed
- This bull will work on adding some punch to his offspring while still maintaining a sound structured look

**\$4,500**

**ANDY NIEDERER**





**OUT OF SALE**



**85H**

**TER-RON  
RIDDLER 85H**

RPAH 85H 2158564 January 25 2020 CE\*  
BW: 96 lbs Act WW Oct 1: 930 lbs  
Adj 205: 780 lbs Adj 365: 1300 lbs

RED U-2 RENOWN 193C  
**RED TER-RON RIDDLER 57F**  
RED KENRAY BARONESS 13C

TER-RON PARK PLACE 18Y  
**TER-RON MISS CEE 22B**  
RED TER-RON MISS CEE 11Z

RED U-2 RECKONING 149A  
RED U-2 ENVIOUS 147X  
RED SSS STAUNCH 64Y  
RED K F BARONESS 57Z  
HF TIGER 5T  
RED TER-RON GOLDIE 240L  
RED NSFR GRETZKY W9  
RED SIX MILE MISS CEE 274P

**BW: 3 WW: 56 YW: 87 Milk: 25**

- This guy is easily one of the stoutest made, biggest hipped bulls in the offering
- He is a real stud with his impressive wide top, soft middle, and beautiful hair coat
- Dam has produced another top son that sold to S Lazy A Ranching and a daughter that sold out of this sale to Lynn Combest
- One of our pen favourites here!!

**RED TER-RON  
HAWK 88H**

**88H**

HFX 88H 2158398 January 26 2020 CE\*\*  
BW: 84 lbs Act WW Oct 1: 930 lbs  
Adj 205: 716 lbs Adj 365: 1212 lbs

RED TWIN HERITAGE HUSTLE 25A  
**RED TER-RON HUSTLE 187F**  
RED TER-RON MONIQUE 173A

RED COMBEST JUGGERNAUT 1613D  
**RED TER-RON LAURYN 31F**  
RED TER-RON LAURYN 56Z

RED HOWE HUSTLE 13X  
RED TWIN HERITAGE CHER 293S  
RED U-2 BIG LEAGUE 544R  
RED DIAMOND T MONIQUE 9906  
RED BAR-E-L ANTHEM 46A  
RED BAR-E-L MEG 85N  
RED TER-RON REALDEAL 01W  
RED TER-RON LAURYN 018S

**BW: 4.1 WW: 37 YW: 60 Milk: 21**

- Hawk 88H is out of the Hustle son that we used, then sold through last year's sale to Hadwin's
- Super attractive look, deep sided, well balanced bull that has done very well out of his first calf momma
- Dam is another first calf Juggernaut that stems from the Lauryn cow family. Lauryn's are known for their great feet and super udder quality. A Lauryn sold in last year's Red Roundup to Leelynn Fornwald for \$15000



Sire of Lot 88H  
Red Ter-Ron Hustle 187F

**\$5,500**  
**DAYMENT RANCH**



Out of the same cow family as 88H - Red Ter-Ron Lauryn 63H



Leelynn Fornwald showing her Lauryn 63H heifer at Red Roundup 2020



**\$8,000**  
**CAM MORRIS**



**91H**

**RED TER-RON  
YELLOWSTONE 91H**

RPAH 91H 2179510 January 26 2020 CE \*  
ET BW: 89 lbs Act WW Oct 1: 865 lbs  
Adj 205: 725 lbs Adj 365: 1258 lbs

RED U-2 RENOWN 193C  
**RED TER-RON RIDDLER 57F**  
RED KENRAY BARONESS 13C

RED TWIN HERITAGE HUSTLE 25A  
**RED TER-RON DIAMOND MIST 138D**  
RED TER-RON DIAMOND MIST 210A

RED U-2 RECKONING 149A  
RED U-2 ENVIOUS 147X  
RED SSS STAUNCH 64Y  
RED K F BARONESS 57Z  
RED HOWE HUSTLE 13X  
RED TWIN HERITAGE CHER 293S  
RED FLYING K JULIAN 72Y  
RED TER-RON DIAMOND MIST 290P

**BW: 1.8 WW: 51 YW: 79 Milk: 23**

- Full brother to Lots 75H & 96H
- Very similar in type and kind to his full brothers Lot 75 & 96 . These bulls are very stout made, square hipped, and chock full of red meat and muscle
- Any one of these 3 ET full brothers would be ideal to keep daughters as replacements from, especially with a cow like 138D being the mother

**RED TER-RON  
HITMAN 92H**

**92H**

HAL 92H 2157840 January 26 2020 CE \*  
BW: 97 lbs Act WW Oct 1: 890 lbs  
Adj 205: 750 lbs Adj 365: 1309 lbs

RED BAR-E-L ANTHEM 46A  
**RED COMBEST JUGGERNAUT 1613D**  
RED BAR-E-L MEG 85N

RED SSS STAUNCH 64Y  
**RED KENRAY BARONESS 13C**  
RED K F BARONESS 57Z

RED WHEEL ALLIANCE 22U  
RED BAR-E-L FRADO 209U  
RED YY RED KNIGHT 640F  
RED BAR-E-L MEG 035G  
RED SSS OLY 554T  
RED SSS SCAARA 429W  
RED NCJ MYSTIFIED 16X  
RED K F BARONESS 58R

**BW: 4.4 WW: 50 YW: 81 Milk: 32**

- Smooth made, soggy type of bull out of the Baroness 13C cow. She is also the mother to Riddler 57F.... sire to many bulls in the sale
- If you are looking to add some extra length, substance, style, and cow power - Hitman deserves a serious look
- The Baroness cow has been a donor dam and flushed very successfully. She also produced a full sister to Riddler that sold in the Power and Perfection Sale to River's Edge Cattle Co, where she has been a very good cow for them
- A full brother sold in last year's sale to Elkwater Farming

**\$5,000**  
**\$7 RANCH**



Dam of Lot 92H - Red Kenray Baroness 13C



Dam of Lot 91H & Lot 96H - Red Ter-Ron Diamond Mist 138D



**OUT OF SALE**



**95H**

**RED TER-RON  
HOWITZER 95H**

HFX 95H 2158405 January 27 2020 CE \*  
BW: 85 lbs Act WW Oct 1: 810 lbs  
Adj 205: 751 lbs Adj 365: 1213 lbs

RED U-2 RENOWN 193C  
**RED TER-RON RIDDLER 57F**  
RED KENRAY BARONESS 13C

RED TWIN HERITAGE HUSTLE 25A  
**RED TER-RON LUCY 165F**  
RED TER-RON LUCY 142A

RED U-2 RECKONING 149A  
RED U-2 ENVIOUS 147X  
RED SSS STAUNCH 64Y  
RED K F BARNONESS 57Z  
RED HOWE HUSTLE 13X  
RED TWIN HERITAGE CHER 293S  
RED FLYING K JULIAN 72Y  
RED TER-RON LUCY 140Y

**BW: 5 WW: 60 YW: 95 Milk: 25**

- Howitzer 95H is a very well balanced, eye appealing bull that has lots of rib and hip shape
- He is easily spotted in the bull pen as he grabs your attention when he moves so freely and easily across the pen, all on a solid, deep heeled foot
- His two year old Hustle dam has the type of udder that would impress the biggest critics. She has done a great job on Howitzer and we are excited about her future

**RED TER-RON  
ORLANDO 96H**

RPAH 96H 2179539 January 27 2020 CE \*  
ET BW: 97 lbs Act WW Oct 1: 900 lbs  
Adj 205: 761 lbs Adj 365: 1275 lbs

RED U-2 RENOWN 193C  
**RED TER-RON RIDDLER 57F**  
RED KENRAY BARONESS 13C

RED TWIN HERITAGE HUSTLE 25A  
**RED TER-RON DIAMOND MIST 138D**  
RED TER-RON DIAMOND MIST 210A

RED U-2 RECKONING 149A  
RED U-2 ENVIOUS 147X  
RED SSS STAUNCH 64Y  
RED K F BARNONESS 57Z  
RED HOWE HUSTLE 13X  
RED TWIN HERITAGE CHER 293S  
RED FLYING K JULIAN 72Y  
RED TER-RON DIAMOND MIST 290P

**BW: 2.8 WW: 54 YW: 85 Milk: 23**

- Another one of the flush brothers out of the Diamond Mist 138D cow
- Like his full brothers, Lot 75H and 85H, Orlando is easy fleshing with an abundance of muscle and rib shape
- We really feel that the Riddler daughters are going to be special. Easy fleshing, deep ribbed, broody females with udder quality that should be second to none
- Orlando's recip dam is a cow that always throws a little more birth, so that would be a reason for his 97 lb birth weight



**\$7,000**

**TREVOR VANSLYKE**

**\$7,500**

**PRAIRIE HALL FARMS**



**101H**

**TER-RON  
RIDDLER 101H**

HFX 101H 2158409 January 28 2020 CE \*  
BW: 90 lbs Act WW Oct 1: 875 lbs  
Adj 205: 742 lbs Adj 365: 1114 lbs

RED U-2 RENOWN 193C  
**RED TER-RON RIDDLER 57F**  
RED KENRAY BARONESS 13C

TER-RON PARK PLACE 18Y  
**TER-RON MISS NUFF 3A**  
RED DKF MISS NUFF 107R

RED U-2 RECKONING 149A  
RED U-2 ENVIOUS 147X  
RED SSS STAUNCH 64Y  
RED K F BARNONESS 57Z  
HF TIGER 5T  
RED TER-RON GOLDIE 240L  
RED GOLD-BAR NUFF SAID MM 110N  
RED DKF MISS MAT 54K

**BW: 2.5 WW: 45 YW: 63 Milk: 27**

- Black/red carrier son of Riddler out of a Park Place daughter
- A large hipped, big barrelled, wide topped bull with a nice disposition
- If you need a bull with lots of hair, and also want to add some muscle and thickness, give 101H a good look
- 101H's mother, 3A, is a high volume, moderate, great producing female. Other sons of 3A have sold to Cheram Farms and Leslie Angus



**\$5,750**  
**BRETT TWA**



**102H RED TER-RON HANNIBAL 102H**

HFX 102H 2158412 January 29 2020 CE \*\*\*

BW: 80 lbs Act WW Oct 1: 790 lbs  
Adj 205: 688 lbs Adj 365: 1263 lbs

RED BAR-E-L ANTHEM 46A  
**RED COMBEST JUGGERNAUT 1613D**  
RED BAR-E-L MEG 85N

RED ROYAL K-C DUKE 08R  
**RED TER-RON HEATHER 31Z**  
RED HIPS HEATHER 61U

RED WHEEL ALLIANCE 22U  
RED BAR-E-L FRADO 209U  
RED YY RED KNIGHT 640F  
RED BAR-E-L MEG 035G  
RED SPRING CREEK HI HO 8K  
RED ROYAL DUCHESS 08L  
RED KBJ WILD CARD 1024S  
RED RCR HEATHER 56H

**BW: 0.4 WW: 26 YW: 45 Milk: 25**

- Hannibal 102H is a long, smooth made bull that has a very moderate birth weight
- These Juggernauts have been very popular on both the bull and female side, and for good reason. They are good cattle...strong footed with lots of heel, easy fleshing and deep ribbed with lots of natural muscling
- Dam has always been a favourite of ours. She is hard to pick a hole in. She always controls birth weights, but still has the ability to make them grow

**RED TER-RON HORATIO 104H**

**104H**

HFX 104H 2158416 January 29 2020 CE \*\*\*

BW: 84 lbs Act WW Oct 1: 790 lbs  
Adj 205: 670 lbs Adj 365: 1257 lbs

S A V INTERNATIONAL 2020  
**TER-RON CONTINENTAL 120D**  
RED TER-RON AMBER 46W

RED ROYAL K-C DUKE 08R  
**RED TER-RON RACHEL 110Z**  
RED TER-RON RACHEL 115N

S A V HARVESTOR 0338  
S A V EMBLYNETTE 5483  
RED TER-RON TOUCHDOWN 8S  
RED TER-RON AMBER 28P  
RED SPRING CREEK HI HO 8K  
RED ROYAL DUCHESS 08L  
RED LAZY MC DIVIDE 8J  
RED TER-RON RACHEL 15J

**BW: 1.1 WW: 31 YW: 51 Milk: 22**

- Horatio is a red hided Continental son that you really can't go wrong with. He offers a combination of calving ease and strong maternal strength
- A very complete made, cherry red bull that seems to get more impressive all the time
- We have calved several Continental daughters out, and they are making the type of cows we really like



**\$4,500**  
**DALE GIBB**

**\$6,250**  
**DAVE MOHR**



**110H RED TER-RON UPDATE 110H**

RPAH 110H 2158574 January 30 2020 CE \*\*

BW: 81 lbs Act WW Oct 1: 805 lbs  
Adj 205: 722 lbs Adj 365: 1278 lbs

MRLA RELOAD 56C  
**RED MRLA UPLOAD 165E**  
RED MRLA MISS 4371B

RED U-2 REVERENCE 198C  
**RED TER-RON ALICE 163E**  
RED TER-RON ALICE 137A

S A V RESOURCE 1441  
RED MRLA MISS 641Y  
RED MRLA TILT 80Z  
RED MRLA MISS 345X  
RED U-2 RECKONING 149A  
RED U-2 LAKOTA 427Y  
RED TER-RON WICKED 53Y  
RED TER-RON ALICE 110U

**BW: 1.4 WW: 29 YW: 49 Milk: 22**

- Update is a smooth made, thick quartered type of bull with lots of capacity, style, and eye appeal to him
- Very dark red and out of a solid footed Reverence daughter
- A full sister to 110H sold in last year's sale to Kerri Lynn McFaul in Ontario



**\$6,000**  
**RON SYMES**



**116H**

**RED TER-RON  
HONOUR 116H**

HFX 116H 2158422 January 31 2020 CE \*\*\*  
TWIN BW: 72 lbs Act WW Oct 1: 730 lbs  
Adj 205: 650 lbs Adj 365: 1227 lbs

S A V INTERNATIONAL 2020  
**TER-RON CONTINENTAL 120D**  
RED TER-RON AMBER 46W

RED U-2 BIG LEAGUE 544R  
**RED TER-RON CRESTA 125U**  
RED TER-RON CRESTA 104P

S A V HARVESTOR 0338  
S A V EMBLYNETTE 5483  
RED TER-RON TOUCHDOWN 8S  
RED TER-RON AMBER 28P  
RED LCC MAJOR LEAGUE A502M  
RED U-2 ANEXA 09E  
RED TER-RON TITANIC 011M  
HB CRESTA 104J

**BW: 2.7 WW: 40 YW: 58 Milk: 27**

- Another bull here that fits right into the Continental type of cattle. Long bodied, deep ribbed, thick, square made, and patterned very nicely
- We really like the style this bull exemplifies and he is one that stands out to visitors in the bull pen
- Dam has stood the test of time as she is 13 years old and calved early again this year. That has to say something for longevity!!

**RED TER-RON  
HARLEY 117H**

**117H**

RPAH 117H 2158576 February 01 2020 CE \*  
BW: 95 lbs Act WW Oct 1: 930 lbs  
Adj 205: 837 lbs Adj 365: 1377 lbs

MRLA RELOAD 56C  
**RED MRLA UPLOAD 165E**  
RED MRLA MISS 4371B

RED TER-RON BAZINGA 13B  
**RED TER-RON SANDY 34E**  
RED BLAIRS SANDY 201X

S A V RESOURCE 1441  
RED MRLA MISS 641Y  
RED MRLA TILT 80Z  
RED MRLA MISS 345X  
TER-RON PARK PLACE 18Y  
RED TER-RON AMBER 46W  
RED CORNER CREEK CASH 2R  
RED JCC SANDY 113N

**BW: 3 WW: 51 YW: 77 Milk: 26**

- Harley 117H has been a favourite of many and he has as much performance as any bull in this sale
- Long bodied, with loads of volume & thickness with a dense hair coat
- Dam is a nice uddered Bazinga daughter with a dark foot, tonnes of capacity and a super broody cow look
- Full sister sold to Kerri Lynn McFaul from Ontario in last year's sale
- This is a bull that deserves a second look!!

**\$9,000**  
**MULLEN LAND & CATTLE**



Full sister to Lot 117H - Red Ter-Ron Sandy 51G



Keely, Halley & Kasey



**\$5,500**

**DAYMENT RANCH**



**119H**

**RED TER-RON  
HEMI 119H**

HFX 119H 2158424 February 03 2020 CE \*

BW: 88 lbs Act WW Oct 1: 735 lbs

Adj 205: 670 lbs Adj 365: 1252 lbs

MRLA RELOAD 56C  
**RED MRLA UPLOAD 165E**  
RED MRLA MISS 4371B

RED U-2 RENOWN 193C  
**RED TER-RON BRANDY 127E**  
RED TER-RON BRANDY 31B

S A V RESOURCE 1441  
RED MRLA MISS 641Y  
RED MRLA TILT 80Z  
RED MRLA MISS 345X  
RED U-2 RECKONING 149A  
RED U-2 ENVIOUS 147X  
RED TER-RON SOLO CUP 180Z  
RED TER-RON BRANDY 58U

**BW: 4.5 WW: 34 YW: 54 Milk: 23**

- Hemi is a very interesting bull that seems to be getting better every day
- Big hiped and wide based with an abundance of rib shape and overall balance
- Hemi is a bull that has tonnes of hair, solid foot structure and a very stylish look
- Dam is the type of cow you want your next herd bull out of
- Brandy 127E is extremely deep ribbed, stout and powerful and is nice uddered
- A full brother was very popular in last year's sale and sold to Rafter SJ Ranch from Montney BC

**RED TER-RON  
HITCH 121H**

**121H**

HFX 121H 2158425 February 04 2020 CE \*

BW: 92 lbs Act WW Oct 1: 800 lbs

Adj 205: 732 lbs Adj 365: 1269 lbs

MRLA RELOAD 56C  
**RED MRLA UPLOAD 165E**  
RED MRLA MISS 4371B

RED U-2 REVERENCE 198C  
**RED TER-RON LAURYN 51E**  
RED TER-RON LAURYN 178C

S A V RESOURCE 1441  
RED MRLA MISS 641Y  
RED MRLA TILT 80Z  
RED MRLA MISS 345X  
RED U-2 RECKONING 149A  
RED U-2 LAKOTA 427Y  
RED SIX MILE SURE SHOT 195Z  
RED TER-RON LAURYN 56Y

**BW: 2.8 WW: 35 YW: 58 Milk: 25**

- Hitch 121H is a moderate, stout made, super hairy, good footed son of Upload that will attract some attention sale day
- Dam is a moderate, high volume, super good footed daughter of Reverence
- Full sister sold in last year's sale to Reverse GC Cattle, a new young breeder from southern AB



**NO SALE**



Dam to Lot 119H - Red Ter-Ron Brandy 127E



Full sister to Lot 121H - Red Ter-Ron Lauryn 59G



**\$6,000**

**JERRY WALTER**



**123H**

**RED TER-RON  
SHOCK TOP 123H**

RPAH 123H 2185974 February 04 2020 CE \*\*

ET BW: 87 lbs Act WW Oct 1: 860 lbs

Adj 205: 745 lbs Adj 365: 1187 lbs

RED BIEBER ROLLIN DEEP Y118

**RED WEBER REFORM 618**

RED BJF LANA'S EQUAL 8021U

RED SOO LINE POWER EYE 161X

**RED TER-RON DIAMOND MIST 26C**

TER-RON DIAMOND MIST 24U

RED BIEBER ROOSEVELT W384

RED BIEBER TILLY 399W

RED BJF 602S

RED SBCC EQUAL LAND

RED COCKBURN RIBEYE 308U

RED TR LYNN 301R

RED TER-RON FULLY LOADED 540R

BIG SKY DIAMOND MIST 290

**BW: 1.7 WW: 44 YW: 77 Milk: 23**

- Shock Top 123H is an ET son out of the past Farm Fair, Lloyd Stockade Roundup, and Canadian Agribition Champion Female, Red Ter-Ron Diamond Mist 26C, who we own in partnership with Six Mile Ranch
- 123H has a dark cherry red, very dense hair coat and a real stylish look to him
- Impressive individual that is wide topped with an abundance of muscle and rib shape
- Dam has been a very solid producer, and seems to have more females than sons. We feel very fortunate to have 123H and 147H to represent how great of a bull producer she can be. Her natural heifer calf by Riddler from last year's calving season is flat out good
- Definite herd bull potential here

**RED TER-RON  
HARVEY 126H**

**126H**

RPAH 126H 2158584 February 05 2020 CE \*\*

TWIN BW: 77 lbs Act WW Oct 1: 835 lbs

Adj 205: 724 lbs Adj 365: 1234 lbs

RED U-2 RENOWN 193C

**RED TER-RON RIDDLER 57F**

RED KENRAY BARONESS 13C

RED U-2 RECKONING 149A

RED U-2 ENVIOUS 147X

RED SSS STAUNCH 64Y

RED K F BARNONESS 57Z

RED SIX MILE WIN-CHESTER 745W

RED SIX MILE FANNY 186T

RED LAZY MC KINGMAN 16W

RED TER-RON ALYSA 330T

RED SIX MILE HARD CORE 471Y

**RED TER-RON ALYSA 91B**

RED TER-RON ALYSA 32Y

**BW: 2.5 WW: 46 YW: 68 Milk: 26**

- If you want to add stoutness, pounds and foot quality to your herd without sacrificing maternal traits, then Harvey 126H may be one to check out!!
- This bull has definitely been noticed by visitors to the farm. He is just a real neat package!
- Dam is a solid footed, fertile cow that comes from a great cow family



**\$5,250**

**SECTION 1 ANGUS**



Dam to Lot 123H - Red Ter-Ron Diamond Mist 26C



Maternal sister to Lot 126H - Red Ter-Ron Alysa 152G



**\$7,500**

**DARRYL DZURKO**



**141H**

**RED TER-RON  
HOLLIDAY 141H**

RPAH 141H 2158593 February 08 2020 CE \*\*\*  
BW: 74 lbs Act WW Oct 1: 730 lbs  
Adj 205: 679 lbs Adj 365: 1292 lbs

MRLA RELOAD 56C  
**RED MRLA UPLOAD 165E**  
RED MRLA MISS 4371B

RED TER-RON SHOCKER 10C  
**RED TER-RON OWYHEE 69E**  
RED LFE OWYHEE 608X

S A V RESOURCE 1441  
RED MRLA MISS 641Y  
RED MRLA TILT 80Z  
RED MRLA MISS 345X  
RED TER-RON PARKER 34A DMC  
RED K ADAMS ZARIA 091Z  
RED 5L NORSEMAN KING 2291  
RED YY OWYHEE 702T

**BW: -1.1 WW: 33 YW: 49 Milk: 23**

- Holliday 141H is appropriately named as he will allow you to "Holiday" while you are calving heifers. With only a 74 lb birth weight, he would be a great calving ease choice
- Very smooth made but still has a very solid look, with overall depth, length and a small head
- Mother is an amazing uddered cow that produced a full brother that sold to Walsh Farms from Ontario in last year's sale

**RED TER-RON  
HARVARD 142H**

**142H**

HFX 142H 2158438 February 09 2020 CE \*  
TWIN BW: 81 lbs Act WW Oct 1: 905 lbs  
Adj 205: 800 lbs Adj 365: 1253 lbs

TER-RON PARK PLACE 18Y  
**RED TER-RON BAZINGA 13B**  
RED TER-RON AMBER 46W

RED TER-RON REALDEAL 01W  
**RED TER-RON REBECCA 123Y**  
RED WILBAR REBECCA 305N

HF TIGER 5T  
RED TER-RON GOLDIE 240L  
RED TER-RON TOUCHDOWN 8S  
RED TER-RON AMBER 28P  
RED TER-RON RELOAD 703T  
RED K ADAMS SAVANAH 11S  
RED SIX MILE KNOCKOUT 459K  
RED HEAD REBECCA 254J

**BW: 1.8 WW: 42 YW: 62 Milk: 23**

- Harvard 142H is the only Bazinga son in this year's sale, and he is a good one
- He will add some bone, pounds, and stoutness to your calf crop. 142H is a super balanced beef machine
- Dam is a bigger framed, solid footed Real Deal daughter that does it year after year. Other sons of 123Y have sold to Taschuk Farms, Prairie Hall Farms, and Ken Crookes
- Twin

**\$4,250**  
**WALK ALONG RANCH**



**144H**

**TER-RON  
HUMMER 144H**

RPAH 144H 2158606 February 09 2020 CE \*  
BW: 96 lbs Act WW Oct 1: 910 lbs  
Adj 205: 822 lbs Adj 365: 1292 lbs

S A V SENSATION 5615  
**BAR-E-L STAMINA 112F**  
BAR-E-L MAGNOLIA 15T

LFE VELOCITY 381B  
**DTA BARANDA 25D**  
NRA BARANDA 141A

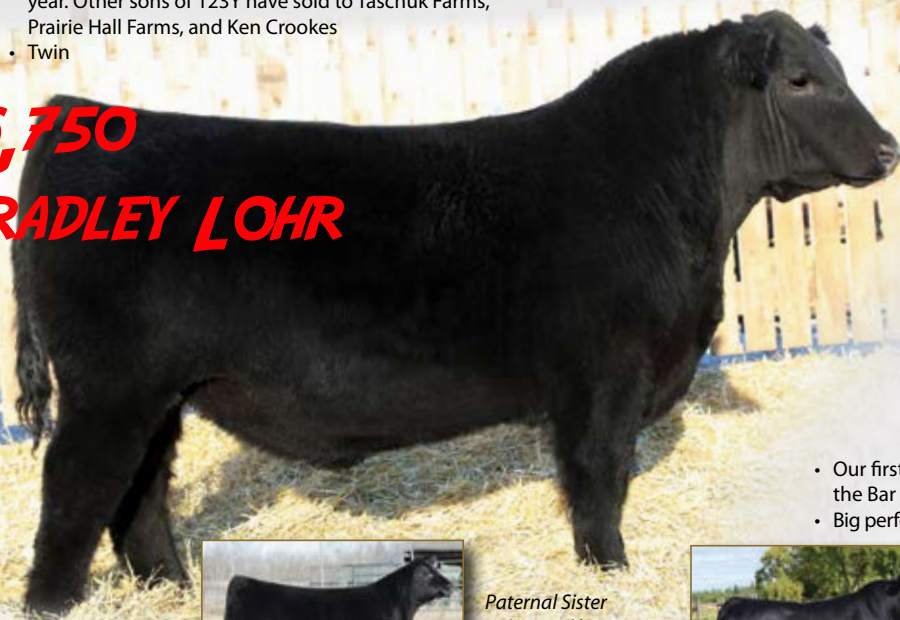
S A V REGISTRY 2831  
S A V BLACKCAP MAY 4136  
S A V 004 DENSITY 4336  
BAR-E-L MAGNOLIA 184R  
S A V HARVESTER 0338  
MV F PRIDE 87U  
WILBAR TIGERSHARK 420Y  
MV F BARANDA 154U

**BW: 3.1 WW: 55 YW: 93 Milk: 23**

- Our first Stamina son on offer. Stamina is a bull we bought out of the Bar E-L sale a few year's back with TNF Angus
- Big performance in this homozygous black bull that pushed the scale down at weaning and will be heavy on sale day
- If you are looking for a bull to up your weaning weights without sacrificing maternal strength, give Hummer 144H a good look
- Dam is a very nice uddered Harvester daughter
- Here is a very good bull from our newly formed Black division!!
- Homozygous black

**\$6,750**

**BRADLEY LOHR**



Paternal Sister  
to Lot 144H

Sire to Lot 144H  
Bar-E-L Stamina 112F





**OUT OF SALE**



**145H**

**RED TER-RON  
HANDGUN 145H**

HFX 145H 2158441 February 09 2020 CE \*\*\*

BW: 88 lbs Act WW Oct 1: 790 lbs

Adj 205: 698 lbs Adj 365: 1127 lbs

RED U-2 RECKONING 149A  
**RED U-2 REVERENCE 198C**  
RED U-2 LAKOTA 427Y

TER-RON PARK PLACE 18Y  
**TER-RON HEATHER 155B**  
RED HIPS HEATHER 61U

RED U-2 RECON 192Y  
RED U-2 ANEXA 271Y  
RED BDL UPROAR 124U  
RED FLYING K LAKOTA 104U  
HF TIGER 5T  
RED TER-RON GOLDIE 240L  
RED KBJ WILD CARD 1024S  
RED RCR HEATHER 56H

**BW: 1.1 WW: 30 YW: 56 Milk: 22**

- Handgun 145H is an easy fleshing, Reverence son that has a dark hoof with lots of heel. Very typical of Reverence
- A smooth made, dark cherry red bull that is small headed, and will add some calving ease to your program
- Check out 145H as one of the heifer bull options!!

**147H**

**RED TER-RON  
GUNSLINGER 147H**

RPAH 147H 2185973 February 10 2020 CE \*\*

BW: 84 lbs Act WW Oct 1: 785 lbs

Adj 205: 696 lbs Adj 365: 1215 lbs

RED BIEBER ROLLIN DEEP Y118  
**RED WEBER REFORM 618**  
RED BIF LANA'S EQUAL 8021U

RED SOO LINE POWER EYE 161X  
**RED TER-RON DIAMOND MIST 26C**  
TER-RON DIAMOND MIST 24U

RED BIEBER ROOSEVELT W384  
RED BIEBER TILLY 399W  
RED BIF 602S  
RED SBCC EQUAL LAND  
RED COCKBURN RIBEYE 308U  
RED TR LYNN 301R  
RED TER-RON FULLY LOADED 540R  
BIG SKY DIAMOND MIST 290

**BW: 1.7 WW: 44 YW: 77 Milk: 23**

- Gunslinger 147H is a full ET brother to Lot 123H
- Both ET brothers are high in quality. Gunslinger is the more moderate of the two, but still is chock full of muscle and red meat! Extra stout made, soggy, very hairy and definitely a bull to get excited about.
- The mother of 147H is Diamond Mist 26C, and she is one you want to own a herd bull out of. She is the type that clicks, no matter who you mate her to



**\$30,000**

**RIVERS EDGE**



Sire to Lot 145H - Red U-2 Reverence 198C



Dam to Lot 147H - Red Ter-Ron Diamond Mist 26C



**\$4,250**

**ANDY NIEDERER**



**150H**

## RED TER-RON HANDS DOWN 150H

RPAH 150H 2158612 February 11 2020 CE \*

BW: 90 lbs Act WW Oct 1: 750 lbs

Adj 205: 671 lbs Adj 365: 1449 lbs

RED BAR-E-L ANTHEM 46A  
**RED COMBEST JUGGERNAUT 1613D**  
RED BAR-E-L MEG 85N

RED FLYING K JULIAN 72Y  
**RED TER-RON DIAMOND MIST 167B**  
RED TER-RON DIAMOND MIST 164Y

RED WHEEL ALLIANCE 22U  
RED BAR-E-L FRADO 209U  
RED YY RED KNIGHT 640F  
RED BAR-E-L MEG 035G  
RED TONGUE RIVER JUBILATION  
RED FLYING K TAMMY 15W  
RED LAZY MC KINGMAN 16W  
RED TER-RON DIAMOND MIST 29S

**BW: 2.7 WW: 36 YW: 66 Milk: 24**

- 150H is "Hands Down" one of the soggiest, stoutest, and deep made bulls in the offering
- These Juggernaut bulls just keep rising to the top
- Full brothers have sold to Topham Red Angus and Ron Symes
- Dam is a model red angus cow that has a great production record. She is the kind we enjoy raising!!

Sire to Lot 150H  
Red Combest  
Juggernaut 1613D



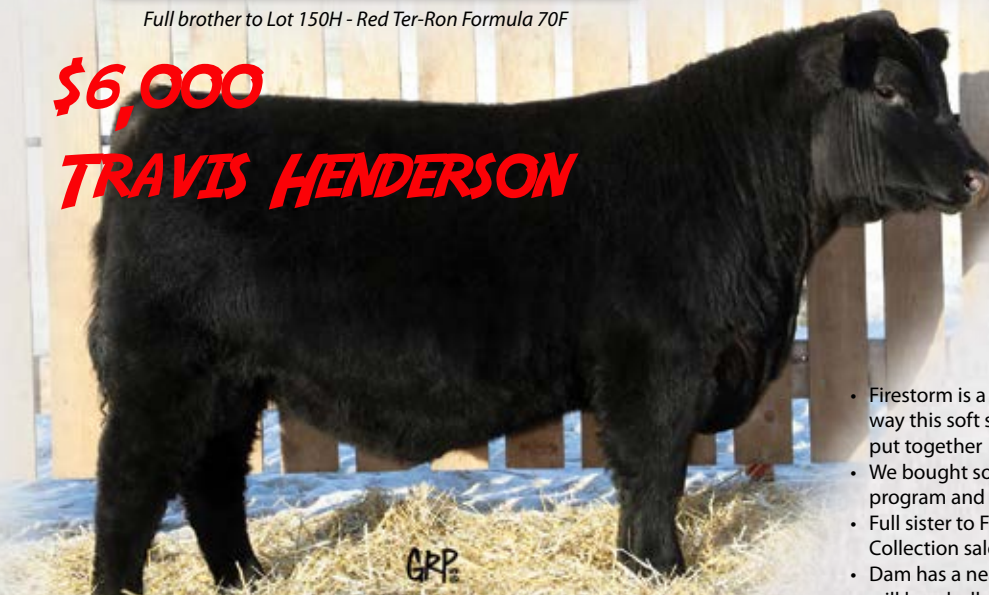
Full Sister to Lot 152H



Full brother to Lot 150H - Red Ter-Ron Formula 70F

**\$6,000**

**TRAVIS HENDERSON**



**152H**

## TER-RON FIRESTORM 152H

HFX 152H 2179495 February 13 2020 CE \*

ET BW: 94 lbs Act WW Oct 1: 860 lbs

Adj 205: 774 lbs Adj 365: 1242 lbs

BROOKING BANK NOTE 4040  
**BROOKING FIREBRAND 6068**  
BROOKING ANNIE K 390

EXAR CLASSEN 1422B  
**MICH ENVIOUS BLACKBIRD 1424**  
RR ENVIOUS BLACKBIRD 4487

CONNELLY EARNAN 076E  
E A ROSE 918  
S A V BEST INTEREST 0136  
SOO LINE ANNIE K 9165  
DAMERON FIRST CLASS  
EXAR PRINCESS 2006  
EXAR MERIT 216  
RR ENVIOUS BLACKBIRD 0290

**BW: 3.5 WW: 52 YW: 83 Milk: 21**

- Firestorm is a bull that really grabs your attention. We really admire the way this soft sided, correct made, super good footed son of Firebrand is put together
- We bought some embryos from the highly respected Greenwood program and ended up getting 152H and two very good daughters
- Full sister to Firestorm 152H was recently sold at the 2020 Angus Collection sale for \$24000
- Dam has a near perfect udder and with the cows behind Firestorm, this will be a bull you will want to check out
- Homozygous Black



**\$20,000**

**NORTH 40 RED ANGUS**



**158H**

**RED TER-RON  
HORTON 158H**

HFX 158H 2158475 February 16 2020 CE \*\*\*

BW: 68 lbs Act WW Oct 1: 745 lbs  
Adj 205: 712 lbs Adj 365: 1239 lbs

MRLA RELOAD 56C  
**RED MRLA UPLOAD 165E**  
RED MRLA MISS 4371B

BROOKING BANK NOTE 4040  
**RUST MISS SIERA 7205E**  
RED C-BAR SIERA Y27

S A V RESOURCE 1441  
RED MRLA MISS 641Y  
RED MRLA TILT 80Z  
RED MRLA MISS 345X  
CONNELLY EARNAN 076E  
E A ROSE 918  
RED SIX MILE AVIATOR 217P  
RED SIX MILE SIERA 257P

**BW: -1.3 WW: 37 YW: 59 Milk: 21**

- Horton 158H is a very low birth weight, calving ease option out of Upload and a very nice Banknote daughter
- 158H has a very cool design, with his smooth shoulder, small head, and a very balanced, attractive look. He is also very red in colour and big haired
- Dam is a broody, solid uddered black/red carrier Banknote daughter
- Horton has a real different look on paper as well



Maternal brother to Lot 192H - Wicked

**RED TER-RON  
HOSTAGE 192H**

**192H**

HFX 192H 2158492 March 14 2020 CE \*\*\*

BW: 78 lbs Act WW Oct 1: 690 lbs  
Adj 205: 726 lbs Adj 365: 1193 lbs

S A V RESOURCE 1441  
**MRLA 109D**  
RED MRLA MISS 345X

RED BRYLOR PANAMA 69P  
**RED TER-RON BOBBIE 93T**  
RED TER-RON BOBBIE 093R

RITO 707 OF IDEAL 3407 7075  
S A V BLACKCAP MAY 4136  
RED SOO LINE MOMENTUM 7051  
RED MRLA MISS 269T  
RED ZAMA PINE 517G  
RED THAT'LL DO RENEE 683H  
RED HOWE MR MATRIX 7L  
RED TER-RON BOBBIE 093N

**BW: 0.3 WW: 24 YW: 41 Milk: 22**

- Hostage is another one of those sleep at night type heifer bulls, but is still very high in quality
- Very clean in his lines, expressive muscle shape, nice headed and very good feet
- 192H will be a very low maintenance type of bull that will leave a very nice group of replacements. I recommend you keep them all!
- The 93T cow has quite a track record - Dam of the Wicked bull, Solo Cup, Wallace, and Sully just to name a few. She is 13 years old and is still going strong. As I write these footnotes, she is going to calve any day. An impressive resume, I'd say!
- Second youngest bull in the sale

**\$4,500**

**GRANT JONES**



**\$10,000**

**WILDOR FARMS**



**193H**

**RED TER-RON  
HAMPTON 193H**

RPAH 193H 2158643 March 14 2020 CE \*

BW: 95 lbs Act WW Oct 1: 835 lbs  
Adj 205: 884 lbs Adj 365: 1460 lbs

MRLA RELOAD 56C  
**RED MRLA UPLOAD 165E**  
RED MRLA MISS 4371B

RED TWIN HERITAGE HUSTLE 25A  
**RED TER-RON DIAMOND MIST 76E**  
RED TER-RON DIAMOND MIST 167B

S A V RESOURCE 1441  
RED MRLA MISS 641Y  
RED MRLA TILT 80Z  
RED MRLA MISS 345X  
RED HOWE HUSTLE 13X  
RED TWIN HERITAGE CHER 293S  
RED FLYING K JULIAN 72Y  
RED TER-RON DIAMOND MIST 164Y

**BW: 3.2 WW: 50 YW: 86 Milk: 26**

- Hampton 193H is the youngest bull in the sale and will just be over a year old come sale time, but he is a real impressive individual
- He's got a stout hind quarter, big top, and a combination of style and overall capacity
- Dam is a sister to Lot 150H as well as the \$18000 Formula bull that is working at Topham's
- 193H is a bull that will definitely have some friend's on sale day



Full brother to Lot 193H  
Red Ter-Ron Uptown 141G



**OUT OF SALE****27G****TER-RON  
ENTICED 27G**

HFX 27G 2093536 January 13 2019 CE \*\*\*

BW: 68 lbs Adj 205: 613 lbs Adj 365: 1098 lbs

S A V INTERNATIONAL 2020

**TER-RON CONTINENTAL 120D**

RED TER-RON AMBER 46W

RED ROYAL K-C DUKE 08R

**RED TER-RON HEATHER 31Z**

RED HIPS HEATHER 61U

S A V HARVESTOR 0338

S A V EMBLYNETTE 5483

RED TER-RON TOUCHDOWN 8S

RED TER-RON AMBER 28P

RED SPRING CREEK HI HO 8K

RED ROYAL DUCHESS 08L

RED KBJ WILD CARD 1024S

RED RCR HEATHER 56H

**BW: -1.3 WW: 17 YW: 25 Milk: 28**

- Continental son that would be a great choice as a heifer bull
- Just a 68 lb birth weight, small head, smooth shoulder, yet deep ribbed and has a muscular look
- The cow behind this bull is easy to look at with a real broody and feminine look and excellent udder quality as well as a nice dark hoof
- Black/red carrier

**TER-RON  
COLOSSAL 129G****129G**

KEEL 129G 2123313 February 14 2019 CE \*

BW: 96 lbs Adj 205: 644 lbs Adj 365: 1215 lbs

EXAR CLASSEN 1422B DAMERON FIRST CLASS

**EF COLOSSAL 520** EXAR PRINCESS 2006

EXAR BLACKBIRD 5877 SCHURRTOP MC 2500

EXAR BLACKBIRD 4448

RED LAZY MC KINGMAN 16W RED RMJ REDMAN 1T

**RED TER-RON ALICE 55A** RED LAZY MC MISS 67R

RED TER-RON ALICE 31Y RED TER-RON REALDEAL 01W

RED TER-RON ALICE 7T

**BW: 2.4 WW: 48 YW: 78 Milk: 23**

- This black/red carrier is an embryo son out of the Agribition Champion EF Colossal 520
- Full brother sold in last year's sale to the Dobinson family
- 129G is moderate in his design, long spined, and will mature into an easy to be around, easy to look at herd sire

**NO SALE**

Sire of Lot 129G - EF Colossal 520



Harvest 2020 at Ter-Ron Farms



## Simmental Bulls

### WLB GO DADDY 52Z 368D

WLB 368D BPG1171897

February 2 2016 BW: 89 lbs

Adj 205: 766 lbs Adj 365: 1454 lbs

WHEATLAND BULL 680S

WHEATLAND PREDATOR 922W

WHEATLAND LADY 752 T

#### MRL EL TIGRE 52Z

MRL BLACK BEAR 79S

MRL MISS 836W

MRL MISS 828S

SHS ENTICER P1B

HARVIE JDF WALLBANGER111X

JDF PEPSI 61U

#### BLACKSAND TESS 56A

SPRINGCREEK TANK 63P

SPRINGCREEK BLK TESS 25T

SPRINGCREEK LINNE 71P

**BW: 3.3 WW: 787 YW: 136 Milk: 25 Total Mat: 69**

- Lead off bull in the 2017 WLB sale that was purchased jointly with Circle G
- Go Daddy is moderate framed, with a massive rib shape, extra depth of body, super sound, and structurally correct
- Sons are very consistent, and daughters are sound uddered females that are real impressive
- Homo polled & hetero black
- Owned with Circle G Angus

### RUST RIO GRANDE 7022 ET

BOHR 22E 1240779 February 28 2017 CE

BW: NA Adj 205: NA Adj 365: NA

DCR MR MOON SHINE X102

TNT 90 PROOF Z401

TNT MISS S17

#### WFL WESTCOTT 24C

R PLUS REDGE 8018U

WFL SWEET LICIOUS 1044X

WFL RED LICIOUS

WHEATLAND BULL 680S

WHEATLAND STOUT 930W

WHEATLAND LADY 737 T

#### RF CERTAINLY FLIRTIN 202Z

LFE STREET LEGAL 510S

RF FLIRTIN FOR CERTIN 37U

TLG FLIRTIN WITH YOU

**BW: 5.3 WW: 92 YW: 144 Milk: 20 Total Mat: 66**

- Rio Grande is the \$60000 high selling bull who incorporates the great WFL Westcott 24L bull with the breed leading RF Certainly Flirtin 202Z cow
- We used Rio by AI to infuse these breed leading genetics into our herd
- Consistent, modest birth weights and a real balanced look and presence to his progeny
- First daughters have impressive udder quality, are easy fleshing and are exactly what we hoped for



**\$4,500**  
**RYAN RAMSAY**



**01H**

**TER-RON  
RIO 01H**

HFX 01H CA-PG1320104

January 11 2020 CE\* BW: 92 lbs

Act WW Oct 1: 925 lbs Adj 205: 735 lbs Adj 365: 1448 lbs

WFL WESTCOTT 24C  
**RUST RIO GRANDE 7022 ET**  
RF CERTAINLY FLIRTIN 202Z

RF DOUBLE UP 37W  
**TER-RON NAOMI 550C**  
DOUBLE BAR D NAOMI 650X

TNT 90 PROOF Z401  
WFL SWEET LICIOUS 1044X  
WHEATLAND STOUT 930W  
RF FLIRTIN FOR CERTIN 37U  
SS EBONYS INTUITION 802  
TLG FLIRTIN WITH YOU  
SPRINGCREEK TEDDY 72U  
DOUBLE BAR D NAOMI 76S

**BW: 2.9 WW: 81 YW: 126 Milk: 22 Total Mat: 63**

- Soggy, huge middled, hairy red bull that has a very good disposition
- Dam is a very solid uddered Double Up daughter that is very sound and fault free

**TER-RON  
RIO 02H**

**02H**

HFX 02H CA-PG1320106 January 17 2020 CE\*

BW: 90 lbs Act WW Oct 1: 860 lbs

Adj 205: 765 lbs Adj 365: 1432 lbs

WFL WESTCOTT 24C  
**RUST RIO GRANDE 7022 ET**  
RF CERTAINLY FLIRTIN 202Z

TER-RON ABSOLUTE 447B  
**TER-RON MISS LABEL 807F**  
MOOSE CREEK MISS LABEL

TNT 90 PROOF Z401  
WFL SWEET LICIOUS 1044X  
WHEATLAND STOUT 930W  
RF FLIRTIN FOR CERTIN 37U  
WFL ABSOLUTE 51Y  
RF WHISPER 247Z  
GREAT DANE RED LABEL 43T  
TWIN ANCHOR 7 PHYLCIA 2P

**BW: 2.7 WW: 81 YW: 128 Milk: 24 Total Mat: 65**

- Very long bodied, smooth made bull that will add some maternal value to your herd. We just started calving a few of these Rio daughters and man the udder quality is definitely what we were hoping for
- Dam is a young Absolute daughter that did a great job on her first calf



**\$4,000**  
**MUNRO CATTLE CO**



Summer Fun



Sire to 08H and 011H - RF Merchant 481B



**\$3,500**  
**PRAIRIE BISON FEEDERS**



**08H**

**TER-RON  
MERCHANT 08H**

HFX 08H CA-BPG1320111 Januar 23 2020 CE \*\*  
BW: 88 lbs Act WW Oct 1: 870 lbs  
Adj 205: 719 lbs Adj 365: 1213 lbs

MR HOC BROKER  
**RF MERCHANT 481B**  
TLG FLIRTIN WITH YOU

TRIPLE C SINGLETARY S3H  
**TER-RON PAIGE 70Z**  
STF/HR MISS X126

SVF STEEL FORCE S701  
JM BF H25  
KENCO/MF POWERLINE 204L  
CHUB'S FLIRT 6P  
HOOKS SHEAR FORCE 38K  
LUCAS JOSIE 19K  
STF UNANIMOUS UP26  
SS PAIGE

**BW: -0.2 WW: 70 YW: 98 Milk: 23 Total Mat: 58**

- Son of Merchant with a modest 88lb birth weight. These Merchant bulls should really make some great replacement females, and some nice, soggy steers
- Good footed bull with a combination of calving ease and performance

**TER-RON GO  
DADDY 010H**

**010H**

HFX 010H CA-PG1320116

January 25 2020 CE \* BW: 90 lbs  
Act WW Oct 1: 840 lbs Adj 205: 734 lbs Adj 365: 1470 lbs

MRL EL TIGRE 52Z  
**WLB GO DADDY 52Z 368D**  
BLACKSAND TESS 56A

SKORS VISION 138C  
**TER-RON JOLETTE 30E**  
TER-RON JOLETTE 430B

WHEATLAND PREDATOR 922W  
MRL MISS 836W  
HARVIE JDF WALLBANGER111X  
SPRINGCREEK BLK TESS 25T  
MR CCF VISION  
SKORS RADIANT 62A  
SKORS ENTICER 171Z  
CG BLACK JOLETTE 230X

**BW: 2.6 WW: 85 YW: 139 Milk: 24 Total Mat: 67**

- Go Daddy son that has been a favourite amongst visitors
- Deep and very soggy with a great disposition
- Dam is the mother to the high selling simmental bull that sold in last year's sale to Walsh Farms in Ontario
- She is a very hard working cow that can really produce

**OUT OF SALE**



**\$3,500**  
**TWIN CREEK**



**011H**

**TER-RON  
MERCHANT 011H**

HFX 011H CA-BPG1320117

January 25 2020 CE \* BW: 92 lbs  
Act WW Oct 1: 850 lbs Adj 205: 709 lbs Adj 365: 1226 lbs

MR HOC BROKER  
**RF MERCHANT 481B**  
TLG FLIRTIN WITH YOU

RF DOUBLE UP 37W  
**TER-RON NAOMI 22Z**  
DOUBLE BAR D NAOMI 650X

SVF STEEL FORCE S701  
JM BF H25  
KENCO/MF POWERLINE 204L  
CHUB'S FLIRT 6P  
SS EBONYS INTUITION 802  
TLG FLIRTIN WITH YOU  
SPRINGCREEK TEDDY 72U  
DOUBLE BAR D NAOMI 76S

**BW: 0 WW: 67 YW: 94 Milk: 23 Total Mat: 57**

- Another Merchant son out of one of our favourite Double Up daughters
- This bull is bred to be great maternally. The 22Z cow has a near perfect udder
- A very well balanced bull with a super cool look



**NO SALE**



**016H**

**TER-RON  
RIO 016H**

HFX 016H CA-PG1320123 January 30 2020 CE \*  
BW: 98 lbs Act WW Oct 1: 875 lbs  
Adj 205: 812 lbs Adj 365: 1454 lbs

WFL WESTCOTT 24C  
**RUST RIO GRANDE 7022 ET**  
RF CERTAINLY FLIRTIN 202Z

WLB GO DADDY 52Z 368D  
**TER-RON DEB 808F**  
TER-RON DEB 22B

TNT 90 PROOF Z401  
WFL SWEET LICIOUS 1044X  
WHEATLAND STOUT 930W  
RF FLIRTIN FOR CERTIN 37U  
MRL EL TIGRE 52Z  
BLACKSAND TESS 56A  
SKORS ENTICER 171Z  
D BAR C DEB 22X

**BW: 3.1 WW: 84 YW: 129 Milk: 23 Total Mat: 66**

- A red Rio Grande son that is extra stout, wide topped, big middled and has good performance numbers
- Very solid bull that has some eye appeal to him as well as a solid foot structure

**TER-RON GO  
DADDY 026H**

HFX 026H CA-BPG1320192 February 11 2020 CE \*  
BW: 89 lbs Act WW Oct 1: 785 lbs  
Adj 205: 729 lbs Adj 365: 1300 lbs

MRL EL TIGRE 52Z  
**WLB GO DADDY 52Z 368D**  
BLACKSAND TESS 56A

WHEATLAND FINAL AFFAIR  
**TER-RON PAIGE 726E**  
STF/HR MISS X126

WHEATLAND PREDATOR 922W  
MRL MISS 836W  
HARVIE JDF WALLBANGER111X  
SPRINGCREEK BLK TESS 25T  
STF ROYAL AFFAIR Z44M  
WHEATLAND LADY 212Z  
STF UNANIMOUS UP26  
SS PAIGE

**BW: 2.3 WW: 76 YW: 113 Milk: 23 Total Mat: 62**

- Very long bodied, smooth made and sound bull that keeps getting better every day. He will be really impressive by sale day
- Dam is a Final Affair daughter that traces back to some really good cows. Good footed, nice uddered and deep ribbed type of cow
- Here is a bull that we feel would be a solid choice

**026H**



**\$3,500**

**KARNILY GOSTEVSKYH**

*Two Year Old Simmental Bull*

**\$4,250**

**TWIN CREEK**



**916G**

**TER-RON  
ACCLAIM 916G**

HFX 916G CA-BPRS1285906  
February 14 2019 CE \*\*  
BW: 83 lbs Act WW Oct 1: 750 lbs  
Adj 205: 743 lbs Adj 365: 1271 lbs

CCLT ALLIANCE 91C  
**WHEATLAND BULL 7134E**  
WHEATLAND LADY 2070Z

TER-RON SPECIALIST 418B  
**TER-RON DEB 022D**  
TER-RON DEB 22B

WS PILGRIM H182U  
BROOKS SHINIA 1A  
WHEATLAND PREDATOR 922W  
ANGUS/ANGUS  
IPU RED SPECIALIST 70T  
MAJESTIC MISS CANDACE 18Y  
SKORS ENTICER 171Z  
D BAR C DEB 22X

**BW: 1.8 WW: 80 YW: 120 Milk: 25 Total Mat: 65**

- 916G is a bull that we used for clean up on some cows after AI
- We really admire the hip shape, big top, and functionality of this bull
- Very quiet natured and easy to work with. If he stamps his progeny with the same easy fleshing ability and performance he carries, it will be impressive
- Very strong footed bull





About our  
*Heifers*

*Once again the heifers in the sale are a select group chosen from some of our top cow families. These heifers are sisters to the replacements we have kept ourselves. Just like the bulls... there isn't a heifer in the group that we wouldn't keep to move our own program forward.*

*We are constantly working on improving our herd, with emphasis on udders and foot quality, along with strong maternal traits. We have seen the mother of every bull we use.*

*The females have been palpated for reproductive soundness and we guarantee them to be breeders. Like the bulls, we would like to be the first to know if you have a problem. The heifers are also on a complete herd health vaccination program.*

*Buy with Confidence . . .*



**\$5,000**  
**WILBAR CATTLE CO**

**6H**

**RED TER-RON BRANDY 6H**

HFX 6H 2141340 January 04 2020  
BW: 90 lbs Adj 205: 599 lbs

RED U-2 RENOWN 193C  
**RED TER-RON RIDDLER 57F**  
RED KENRAY BARONESS 13C

RED THAT'LL DO UNBELIEVABLE 6U  
**RED TER-RON BRANDY 5X**  
RED TER-RON BRANDY 211M

RED U-2 RECKONING 149A  
RED U-2 ENVIOUS 147X  
RED SSS STAUNCH 64Y  
RED K F BARNONESS 57Z  
RED LAZY R C EL SENRO 405P  
RED THAT'LL DO MISS 57N  
RED LAZY MC DIVIDE 8J  
RED TER-RON BRANDY 11J

**BW: 4.5 WW: 53 YW: 89 Milk: 18**

- We wanted to put a few of these Riddler daughters in the sale to show you how well he is breeding on both sexes
- 6H is a beautifully patterned heifer out of a high volume Unbelievable 6U daughter
- Brandy blends a balanced muscle shape, with a very strong top and possesses a great angus character
- Dark cherry red in color with a dense hair coat
- We really believe these Riddlers will make very good cows and produce high quality cattle

GRP

**RED TER-RON HEATHER 18H**

**18H**

HFX 18H 2137884 January 10 2020  
BW: 92 lbs Adj 205: 572 lbs

RED BAR-E-L ANTHEM 46A  
**RED COMBEST JUGGERNAUT 1613D**  
RED BAR-E-L MEG 85N

RED LAZY MC KINGMAN 16W  
**RED TER-RON HEATHER 127B**  
RED TER-RON HEATHER 31Z

RED WHEEL ALLIANCE 22U  
RED BAR-E-L FRADO 209U  
RED YY RED KNIGHT 640F  
RED BAR-E-L MEG 035G  
RED RMJ REDMAN 1T  
RED LAZY MC MISS 67R  
RED ROYAL K-C DUKE 08R  
RED HIPS HEATHER 61U

**BW: 3 WW: 30 YW: 54 Milk: 25**

- Heather is the only Juggernaut heifer on offer this year and she is a good one
- We have been very pleased with the Juggernaut progeny and feel he is improving our herd as much as any bull we have used. He stamps his progeny with soundness, hoof quality, muscling, performance, and excellent phenotype
- Heather 127B is a moderate framed, deep ribbed, excellent uddered cow that has a lot of maternal value. Full sister sold to Ranch EL Ermitano in Mexico two years ago, and we have retained a very nice red Continental daughter out of 127B

**\$6,250**  
**CLEGG ANGUS RANCH**

GRP

**\$5,000**  
**KINGSCIEW FARMS**

**32H**

**RED TER-RON SAMARIA 32H**

HFX 32H 2141338 January 15 2020  
BW: 82 lbs Adj 205: 575 lbs

RED U-2 RENOWN 193C  
**RED TER-RON RIDDLER 57F**  
RED KENRAY BARONESS 13C

RED LAZY MC KINGMAN 16W  
**RED TER-RON SAMARIA 36Y**  
RED NDCC FARGO SAMARIA 103L

RED U-2 RECKONING 149A  
RED U-2 ENVIOUS 147X  
RED SSS STAUNCH 64Y  
RED K F BARNONESS 57Z  
RED RMJ REDMAN 1T  
RED LAZY MC MISS 67R  
RED BADLANDS BONUS 70Z  
RED DIAMOND D SAMARIA 320J

**BW: 2.5 WW: 40 YW: 64 Milk: 24**

- Samaria 32H is another one of those good Riddler daughters that is moderate in structure, super straight in her lines, broody, and just has momma cow written all over her
- The potential of these Riddler daughters really makes a guy want to speed things up and get them into production

GRP



**\$5,750**

**PATCHELL LIVESTOCK**



**38H**

**RED TER-RON  
RENEE 38H**

HFX 38H 2145260 January 16 2020  
BW: 70 lbs Adj 205: 671 lbs

RED RUST BULL 31B  
**RED SIX MILE FIFTH SENSE 43F**  
RED SIX MILE MINERVA 584B

RED COMBEST JUGGERNAUT 1613D  
**RED TER-RON RENEE 39F**  
RED TER-RON RENEE 107Z

RED C-T DKK DUKE 1100  
RED BKT LARKEISA M288 CK  
RED SIX MILE RAWHIDE 222X  
RED SIX MILE MINERVA 3Y  
RED BAR-E-L ANTHEM 46A  
RED BAR-E-L MEG 85N  
RED ROYAL K-C DUKE 08R  
RED TER-RON RENEE 015T

**BW: 0.5 WW: 53 YW: 83 Milk: 29**

- Renee 38H is a very well balanced power house of a heifer, yet still maintains a feminine angus phenotype
- This sale feature is one that could really be a future donor type female
- Dam is just a first calf Juggernaut that has a huge, correct made foot, very good udder structure, and a deep feminine look
- These Fifth Sense daughters should make terrific cows

**RED TER-RON  
BLOCKANA 52H**

HFX 52H 2138855 January 19 2020  
BW: 92 lbs Adj 205: 703 lbs

S A V INTERNATIONAL 2020  
**TER-RON CONTINENTAL 120D**  
RED TER-RON AMBER 46W

RED 6 MILE FULL THROTTLE 171T  
**RED SIX MILE BLOCKANA 210X**  
RED DOUBLE C BLOCKANA 661T

S A V HARVESTOR 0338  
S A V EMBLYNETTE 5483  
RED TER-RON TOUCHDOWN 8S  
RED TER-RON AMBER 28P  
RED TER-RON FULLY LOADED 540R  
RED SIX MILE WITZEL 360J  
RED DOUBLE C ROMERO 41R  
RED DOUBLE C BLOCKANA 80G

**BW: 4.6 WW: 55 YW: 93 Milk: 25**

- 52H is very big bodied, wide topped, super hairy and has momma cow written all over her
- We have a black hided full sister to 52H that will calve soon, and she looks to be tremendous uddered
- After calving some of these Continental daughters out, we feel this is a heifer we should be retaining for our own herd. This is the type of heifer that proves we are selling some of our best
- Definitely one to check out, she will turn heads on sale day

**OUT OF SALE**



**94H**

**RED TER-RON  
GOLDIE 94H**

HFX 94H 2138856 January 26 2020  
BW: 88 lbs Adj 205: 604 lbs

S A V INTERNATIONAL 2020  
**TER-RON CONTINENTAL 120D**  
RED TER-RON AMBER 46W

RED LAZY MC KINGMAN 16W  
**RED TER-RON GOLDIE 23Y**  
RED TER-RON GOLDIE 240L

S A V HARVESTOR 0338  
S A V EMBLYNETTE 5483  
RED TER-RON TOUCHDOWN 8S  
RED TER-RON AMBER 28P  
RED RMJ REDMAN 1T  
RED LAZY MC MISS 67R  
RED LAZY MC DIVIDE 8J  
RED TER-RON GOLDIE 240J

**BW: 3.1 WW: 47 YW: 79 Milk: 23**

- Another one of those good Continental daughters that is extremely long bodied, super straight in her lines... and her proud look definitely demands your attention
- Dam is a Kingman daughter that is from the Goldie cow family. 23Y is also the dam to the Banger bull that has worked so well in the JAS program at Neepawa MB. Another son sold in last year's sale to Andy Niederer from Idaho.



**\$5,500**

**CLEGG ANGUS RANCH**



**103H**

**RED TER-RON  
DIAMOND MIST 103H**

RPAH 103H 2142255 January 29 2020

BW: 75 lbs Adj 205: 573 lbs

MRLA RELOAD 56C  
**RED MRLA UPLOAD 165E**  
RED MRLA MISS 4371B

TER-RON PARK PLACE 18Y  
**RED TER-RON DIAMOND MIST 193E**  
RED TER-RON DIAMOND MIST 107Y

S A V RESOURCE 1441  
RED MRLA MISS 641Y  
RED MRLA TILT 80Z  
RED MRLA MISS 345X  
HF TIGER 5T  
RED TER-RON GOLDIE 240L  
RED TER-RON REALDEAL 01W  
BIG SKY DIAMOND MIST 290

**BW: 0.8 WW: 36 YW: 57 Milk: 20**

- Here is a very complete and attractive female with a super solid pedigree
- We don't offer Diamond Mist females very often, so here is your chance to add a great one to your herd
- 103H is very complete in her lines, sound footed and has that "look at me" presence when she is on the move
- These Diamond Mists are destined for maternal greatness

**RED TER-RON  
RACHEL 106H**

HFX 106H 2146197 January 30 2020

BW: 70 lbs Adj 205: 570 lbs

MRLA RELOAD 56C  
**RED MRLA UPLOAD 165E**  
RED MRLA MISS 4371B

RED U-2 REVERENCE 198C  
**RED TER-RON RACHEL 1E**  
TER-RON RACHEL 146B

S A V RESOURCE 1441  
RED MRLA MISS 641Y  
RED MRLA TILT 80Z  
RED MRLA MISS 345X  
RED U-2 RECKONING 149A  
RED U-2 LAKOTA 427Y  
TER-RON PARK PLACE 18Y  
RED TER-RON RACHEL 815R

**BW: -0.9 WW: 26 YW: 46 Milk: 23**

- Rachel 106H is a moderate framed female that excels with low birth, plenty of depth and shape and yet very feminine
- These Upload females are going to be great young cows and 106H is one that deserves some attention
- This soggy middled, dark cherry red heifer represents what is necessary in our industry... that is feed efficiency and a female that has longevity and makes you money every year
- Full sister sold to Reverse GC Angus in last year's sale

**106H**



**\$5,500**

**TRIPLE L RED ANGUS**

**\$5,250**

**MARK SMITH**



**107H**

**RED TER-RON  
LAURYN 107H**

HFX 107H 2139364 January 30 2020

BW: 84 lbs Adj 205: 605 lbs

MRLA RELOAD 56C  
**RED MRLA UPLOAD 165E**  
RED MRLA MISS 4371B

RED U-2 RENOWN 193C  
**RED TER-RON LAURYN 13E**  
RED TER-RON LAURYN 140C

S A V RESOURCE 1441  
RED MRLA MISS 641Y  
RED MRLA TILT 80Z  
RED MRLA MISS 345X  
RED U-2 RECKONING 149A  
RED U-2 ENVIOUS 147X  
RED TER-RON PARKER 34A DMC  
RED TER-RON LAURYN 190U

**BW: 4.1 WW: 46 YW: 79 Milk: 19**

- Here is a heifer from the Lauryn cow family, one of the top producing cow families at Ter-Ron
- Lauryn 107H is very similar to the Lot 106H heifer. Super soft middled, moderate framed, wedge shaped type female with excellent foot quality
- These Renown females are proving to be some of our top young cows... 107H's dam, 13E is no exception



**\$6,250**

**TRIPLE L RED ANGUS**

**109H**

**RED TER-RON  
MAGGIE 109H**

HFX 109H 2139365 January 30 2020

BW: 91 lbs Adj 205: 631 lbs

MRLA RELOAD 56C  
**RED MRLA UPLOAD 165E**  
RED MRLA MISS 4371B

RED U-2 RENOWN 193C  
**RED TER-RON MAGGIE 155E**  
RED TER-RON MAGGIE 152X

S A V RESOURCE 1441  
RED MRLA MISS 641Y  
RED MRLA TILT 80Z  
RED MRLA MISS 345X  
RED U-2 RECKONING 149A  
RED U-2 ENVIOUS 147X  
RED JD LANN EVOLUTION 119S  
RED DOUBLE C MAGGIE 770M

**BW: 5.7 WW: 36 YW: 62 Milk: 22**

- Upload mated with Maggie 155E has certainly gelled to produce this stand out female that has maternal greatness stamped all over her
- Easy fleshing female with extra barrel shape through her middle third and she is the type of female that will be a producer for years to come
- Moderate dam with excellent feet and udder

**RED TER-RON  
ALICE 111H**

RPAH 111H 2169337 January 30 2020

BW: 71 lbs Adj 205: 641 lbs

RED COMBEST JUGGERNAUT 1613D  
**RED TER-RON FORMULA 70F**  
RED TER-RON DIAMOND MIST 167B

RED U-2 RENOWN 193C  
**RED TER-RON ALICE 111F**  
RED TER-RON ALICE 71P

RED BAR-E-L ANTHEM 46A  
RED BAR-E-L MEG 85N  
RED FLYING K JULIAN 72Y  
RED TER-RON DIAMOND MIST 164Y  
RED U-2 RECKONING 149A  
RED U-2 ENVIOUS 147X  
RED TER-RON TITANIC 011M  
RED TER-RON ALICE 07L

**BW: 2.3 WW: 38 YW: 63 Milk: 22**

- Alice 111H is one of those females that makes us question why we are selling her!
- This girl is out of the \$18000 Formula bull that sold to Topham Angus two years ago
- 111H has the phenotype and pedigree to either make a solid show female for a junior or to become a "donor" type female
- Alice is soft made, deep ribbed, great haired, strong footed with an attentive "angus head"
- Definitely a sale feature here folks



Sire to Lots 111H & 118H  
Red Ter-Ron Formula 70F

**\$10,500**

**TRIPLE L RED ANGUS**

**118H**

**RED TER-RON  
MISTY 118H**

HFX 118H 2169336 February 03 2020

BW: 82 lbs Adj 205: 598 lbs

RED COMBEST JUGGERNAUT 1613D  
**RED TER-RON FORMULA 70F**  
RED TER-RON DIAMOND MIST 167B

RED U-2 REVERENCE 198C  
**RED TER-RON MISTY 118F**  
RED TER-RON MISTY 30D

RED BAR-E-L ANTHEM 46A  
RED BAR-E-L MEG 85N  
RED FLYING K JULIAN 72Y  
RED TER-RON DIAMOND MIST 164Y  
RED U-2 RECKONING 149A  
RED U-2 LAKOTA 427Y  
XO CROWFOOT CHALLENGER 354A  
RED TER-RON MISTY 64B

**BW: 2 WW: 36 YW: 65 Milk: 24**

- Very high quality Formula 70F daughter that is as good as her picture
- Misty 118H is deep, soggy made, long, easy fleshing, and has tremendous rib shape
- Another heifer that would be fun for a junior to hang a halter on or to keep in your front pasture, whatever fits

**\$8,250**

**TRIPLE L RED ANGUS**



**\$4,500**

**KINGSVIEW FARMS**



**154H**

**RED TER-RON  
FREYJA 154H**

HFX 154H 2139450 February 13 2020

BW: 89 lbs Adj 205: 614 lbs

MRLA RELOAD 56C  
**RED MRLA UPLOAD 165E**  
RED MRLA MISS 4371B

RED TER-RON BAZINGA 13B  
**RED TER-RON FREYJA 48D**  
RED TER-RON FREYJA 173Z

S A V RESOURCE 1441  
RED MRLA MISS 641Y  
RED MRLA TILT 80Z  
RED MRLA MISS 345X  
TER-RON PARK PLACE 18Y  
RED TER-RON AMBER 46W  
RED TER-RON REALDEAL 01W  
RED WARD'S FREYJA 56N

**BW: 2.7 WW: 38 YW: 58 Milk: 22**

- After calving out several of these Upload daughters so far, it is certainly rewarding to see the udder quality and the low maintenance that they display
- 154H is a soggy middled and solid made female that is very efficient
- Definitely the type that would be a good fit for anyone's herd

**RED TER-RON  
DUCHESS 162H**

HFX 162H Applied For February 18 2020

BW: 90 lbs Adj 205: 615 lbs

RED TWIN HERITAGE HUSTLE 25A  
**RED TER-RON HUSTLE 187F**  
RED TER-RON MONIQUE 173A

SOO LINE MOTIVE 9016  
**TER-RON DUCHESS 21F**  
RED TER-RON DUCHESS 115A

RED HOWE HUSTLE 13X  
RED TWIN HERITAGE CHER 293S  
RED U-2 BIG LEAGUE 544R  
RED DIAMOND T MONIQUE 9906  
HF KODIAK 5R  
TLA BEAUTY 5R  
RED TER-RON REALDEAL 01W  
RED TER-RON DUCHESS 13S

**BW: 3.8 WW: 34 YW: 58 Milk: 20**

- Youngest heifer in the offering, but one that will definitely grab your attention sale day. Dam is a young Motive daughter, so she definitely has a different twist to her pedigree on the bottom side
- Very exciting, sweet fronted, deep sided type of female that has enough stoutness to her
- Balance, with lots of style, would be a great way to describe 162H

**162H**



**\$4,500**

**MCMILLEN RANCHING**

Terms & Conditions

**Bidding:** Each animal will be sold to the highest bidder. Bidding disputes: The auctioneer will settle any disputes as to bids, and his decision on such matters shall be final.

**Terms:** The terms of the sale are cash or cheque. The right of property shall not pass until after settlement is made. All settlements will be made with the clerks of the sale immediately following the conclusion of the sale and before any cattle will be released from the sale facility. Each animal becomes the risk of the purchaser as soon as sold.

**Guarantee:** We guarantee you a sound breeding bull, if he fails to be a satisfactory breeder, we will replace him with a bull of equal value or credit towards the purchase of another bull. No refunds. Bulls are not guaranteed to freeze semen, if you have any problems with your purchase, contact us immediately.

**Insurance:** Will be available sale day. All bulls fed for the month of April are at the purchasers risk and must be insured.

**Liability:** All persons who attend the sale do so at their own risk. Neither owners, clerks, or anyone connected with the sale assumes any responsibility, legal or otherwise for damage of any kind.

**Announcements:** Changes of information contained in this catalog will be corrected by announcements from the block at sale time and shall take precedence over any printed matter.

**Semen:** Ter-Ron Farms reserves the right to collect semen on any bull sold through this sale for in herd use only. This semen will be collected at the buyers convenience and seller's expense.

**Delivery:** Delivery will commence in April. Please leave delivery instructions at time of settlement.

**Certificate of Registry:** A certificate of registry and transfer will be furnished for each animal after full payment has been made.

**Cattle inspection:** All cattle carry permanent ID tags corresponding to sale Lot numbers. All shall be available for inspection prior to sale.

**Females:** All females are guaranteed breeders. The standard CAA guarantee will apply



# ANGUS OPEN HEIFERS



*Halley - First Year of  
Veterinary Medicine*



*Keely - Graduation 2020*



*Kasey - 4H Steer*

## *Thanks to our 2020 Buyers*

Brad Lohr  
Corona Creek  
David Mohr  
Triple S Red Angus  
Erskine Farming Co.  
Prairie Hall Farms  
Little Valley View Ranch  
Wildor Farms  
Ron Symes  
Ellwood Farms  
Paul Dobinson  
Bob Campbell

Adair Angus  
Don & Leda Jensen  
North 40 Angus  
Darren Olson  
Elkwater Farming Co.  
Blair Ewasiuk  
ELC Cattle Co  
Covered Wagon Cattle Co.  
Ward's Red Angus  
Jon Bloomquist  
Andy Niederer  
Ken Crookes

Kerri Lynn McFaul  
Sandstorm Angus  
Jack & Shannon Trask  
Walsh Farms  
Bar P Lazy A  
Letniak Farms  
Spruceville Cattle Co.  
Jon Shaw  
Tie Rail Ranch  
Brett Twa  
Hadwin Cattle Co  
John Schmidt  
Carter Renschler  
Jarret Batt  
Brad & Kate Brenchley  
Reverse GC Angus  
Cam Morris  
Combest Red Angus  
McGowan Farms  
Wallgren Farms  
Lyons Cattle Co.  
Wauter Valley Angus  
Greenwood Angus  
Lock Farms  
Rodney Anderson  
Sieg's Contracting

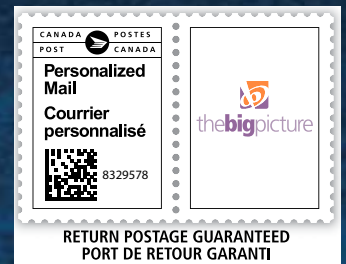




**Ter-Ron Farms**  
**Box 634**  
**Forestburg, AB**  
**T0B 1N0**



*Please call 780.582.2109 or email [smada@syban.net](mailto:smada@syban.net)  
if you would like to be removed from our mailing list*



**TER-RON** 03.18.2021

*Bull & Select Female Sale*

