

Canadian Donors

**PREGNANT
RECIPIENT**

ONLINE SALE



SALE RESULTS

37 LOTS AVERAGED \$6,031

WEDNESDAY **2021**
DECEMBER
15TH



HOW TO BID:

OPTION 1 - UTILIZE THE BMS INDUSTRY-LEADING ORDER BUYING SERVICES. CONTACT A BOHRSON MARKETING MEMBER AND WE WILL BID FOR YOU IN A PROFESSIONAL AND CONFIDENTIAL MANNER.

OPTION 2 - BID ONLINE WITH WWW.DLMS.CA

FIRST TIME FARMGATE USERS:

- FIRST TIME USERS WILL SELECT THE REGISTER BUTTON FROM THIS PAGE. FILL OUT THE REGISTRATION FORM TO SIGNUP FOR A FREE USER ACCOUNT AND IT ALLOWS YOU TO SELECT A USERNAME AND PASSWORD FOR USE ON ALL FARM GATE TIMED AUCTIONS. (PLEASE NOTE DUE TO SOME OF THE TEXT NOTIFICATION FEATURES THE FARMGATE TIME AUCTION SITE REQUIRES A NEW ACCOUNT SEPARATE ACCOUNT FROM YOUR DLMS LIVE SALE SITE)
- AFTER YOU CREATE YOUR FARMGATE ACCOUNT YOU WILL RECEIVE A TXT MESSAGE WITH A PIN CODE TO VERIFY YOUR ACCOUNT.
- ON YOUR FIRST LOG IN TO FARMGATE TIMED AUCTIONS WE RECOMMEND YOU GO TO YOUR PROFILE AND CONFIRM YOUR NOTIFICATIONS ARE SET TO YES. THIS ALLOWS THE SITE TO SEND YOU TEXT AND/OR EMAIL NOTIFICATIONS WHEN YOU ARE OUT BID AND IF THERE IS ACTIVITY ON YOUR FAVOURITE LOTS.

HOW TO BID IN A TIMED AUCTION

NOW THAT YOU ARE LOGGED IN AND YOUR ACCOUNT PHONE NUMBER / EMAIL IS VERIFIED YOU ARE ABLE TO BID ON AN UPCOMING SALE. SIMPLY FIND THE LOT YOU ARE INTERESTED IN BIDDING ON. AFTER YOU HAVE FOUND THE LOT THERE ARE 2 OPTIONS FOR BIDDING ON THE LOT.

- **PLACE NEXT BID** - TO PLACE THE NEXT BID ON THE ITEM, YOU SEE THE AMOUNT IN THE FIRST BOX, YOU SIMPLY CLICK THE "PLACE BID" BUTTON AND AFTER YOU REVIEW THE BID AND AGREE TO THE TERMS AND CONDITIONS YOUR BID WILL BE PLACED.

- **MAX BID AMOUNT** - TO PLACE A MAX BID YOU PUT YOUR MAX BID IN THE SECOND BOX LISTED AS "MAX BID" ON THE ITEM, AND THEN CLICK THE "PLACE BID" BUTTON AND AFTER YOU REVIEW THE BID AND AGREE TO THE TERMS AND CONDITIONS YOUR BID WILL BE PLACED AS THE NEXT BID. WITH THE MAX BID PLACED THE COMPUTER WILL THEN KEEP YOU AS THE HIGH BIDDER TO THE MAX AMOUNT YOU HAVE PLACED. THIS CAN BE A GREAT FEATURE IF YOU ARE NOT ABLE TO GIVE 100% ATTENTION TO THE SALE CLOSE OUT AND PROTECT YOUR INTEREST SO YOU DO NOT MISS OUT ON ANY LOTS YOU WANT TO PURCHASE. THE MAX BID AMOUNT IS COMPLETELY CONFIDENTIAL FROM THE SELLER DURING THE SALE PROCESS.

EXAMPLE OF HOW THE MAX BID WORKS - IF THE LOT HAS A \$2000 BID ON IT AND YOU PLACE A PROXY BID OF \$3500 INTO THE SYSTEM, THE COMPUTER WILL BID \$2100 FOR YOU BUT IF SOME ONE ELSE BIDS \$2200, THE COMPUTER WILL AGAIN BID FOR YOU, THIS TIME AT \$2300. THE SYSTEM WILL LOOK AFTER YOUR INTEREST TO A MAXIMUM OF \$3500. IF ANOTHER BIDDER IS ON AT \$3600, YOUR PROXY WILL NO LONGER BE EFFECTIVE AND YOU WILL NO LONGER HAVE THE WINNING BID ON THIS LOT WITHOUT ONCE AGAIN LOGGING IN AND BIDDING AGAIN OR MOVING YOUR ATTENTION TO A SECOND LOT OF INTEREST. PLEASE NOTE THAT IN SOME CASES A LOT VALUE CAN CHANGE VERY QUICKLY IF 2 MAX BIDS ARE PLACED ON THE SAME LOT COMPETING AGAINST EACH OTHER.

WATCH LIST FEATURE

IF YOU HAVE ITEMS IN MULTIPLE AUCTIONS OR ONLY A FEW FROM THE SAME AUCTION THAT YOU WANT TO WATCH WITH OUT HAVING TO SCROLL THROUGH THE ENTIRE LIST YOU CAN ADD THE LOTS TO YOUR WATCHLIST. ON EACH LOT YOU WILL SEE THE "EYE" BUTTON BESIDE THE BID BUTTON, BY CLICKING THIS "WATCHLIST" ICON THAT ITEM IS ADDED TO YOUR PERSONAL WATCHLIST FOR EASY VIEWING OF JUST YOUR FAVORITE LOTS IN THIS SALE OR ON THE ENTIRE SITE.

WHAT IS RACEHORSE STYLE CLOSE?

RACEHORSE STYLE SALE CLOSE IS WHEN THE ENTIRE SALE STAYS OPEN IN EXTENDED BIDDING. THIS TYPE OF SALE ALLOWS YOU AS THE BIDDER TO CHANGE TO A DIFFERENT LOT WITHIN THE SAME SALE IF THE BIDDING HAS GONE IN TO EXTENDED BIDDING.

HOW WILL EXTENDED BIDDING WORKS? WHEN WE GET TO THE CLOSE OUT END TIME THE CLOCK FOR CLOSE EXTENDS WITH ANY BID PLACED WITH LESS THAN 5 MIN ON THE CLOCK. THIS TYPE OF EXTENDED BIDDING TURNS THE END TIME TO MORE OF A SOFT TIME. EXTENDED BIDDING ALLOWS BIDDERS TO COMPETE IN LOTS LIKE A REAL AUCTION AND GIVE ALL BIDDERS THE SAME TIME TO MAKE A DECISION. ALWAYS FOLLOW THE CLOCK TO SEE HOW MUCH TIME REMAINS IN THE SALE YOU ARE INTERESTED IN.

BIDDING CLOSE & FOLLOW-UP

AFTER THE CLOCK HAS GONE TO "ENDED" AND NO BIDDING HAS OCCURRED FOR 5 MIN THE COMPUTER WILL DECLARE THE SALE FINISHED. FOLLOWING THE CLOSE TYPICALLY WITHIN 24 HOURS OF THE SALE CLOSE THE SALE CONSIGNOR WILL CONTACT ALL WINNING BIDDERS TO ARRANGE PAYMENT, TRANSFER OF PEDIGREES AND DELIVERY/PICK UP OF YOUR LOT. OR AS THE WINNING BIDDING YOU CAN CONTACT THE SALE CONSIGNOR / SALE MANAGER TO CONFIRM PAYMENT INSTRUCTIONS.

- PLEASE MAKE SURE THAT YOUR ACCOUNT INFO IS UP-TO-DATE AND CORRECT IF YOU ARE THE WINNING BIDDER OF A LOT AS THIS IS HOW THE BILLING IS SENT TO SALE MANAGER AND/OR SALE CONSIGNOR.

IF YOU NEED ASSISTANCE, CONTACT MARK SHOLOGAN - 780.699.5082

WEDNESDAY 2021
DECEMBER 15
7PM MST



SALE INFORMATION

SALE DAY CONTACTS

SCOTT BOHRSON	403 370 3010
ROB VOICE	306 270 6082
TAYLOR RICHARDS	306 821 4169
MARTIN BOHRSON	306 220 7901
JAXON PAYNE	306 830 0456
JAY SIBBALD	403 899 2625
CODY HANEY	403 845 8806

LOCATION OF RECIPS

IF YOU WOULD LIKE TO VIEW THE PREGNANT RECIPIENTS PRIOR TO SALE OR ARRANGE FOR PICKUP AFTER THE SALE, THEY ARE LOCATED 3 MILES NORTH OF THE CORNER OF RR 283 AND HWY 582. THE GOOGLE MAP LOCATION IS "51.707008, -113.901860" AND FEEL FREE TO VISIT WITH SCOTT BOHRSON 403-370-3010 FOR FURTHER INFO IF NEEDED.

DELIVERY

WE WILL WORK WITH ALL PURCHASERS TO ASSIST IN DELIVERY AND TO GET THEM DELIVERED TO CENTRAL LOCATIONS THROUGHOUT CANADA, FEEL FREE TO VISIT WITH SCOTT PRIOR TO SALE ON THESE DETAILS. FOR USA CUSTOMERS, WE WILL COVER FULL COSTS OF PAPERWORK AND DELIVER THEM TO A CENTRAL LOCATION ON THE SOUTH SIDE OF THE BORDER.

TERMS & CONDITIONS

CATTLE WILL SELL UNDER THE STANDARD TERMS & CONDITIONS PUT FORWARD FROM CSA, CAA & BMS. THESE ARE AVAILABLE UPON REQUEST.

HERD HEALTH

DIDSBURY VET SERVICES HAS BEEN OUR MAIN VETERINARY SERVICE FOR GENERAL HERD HEALTH. ON NOVEMBER 15, THE GROUP OF RECIPIENTS ALL RECEIVED SCOURBOS 9, VIRASHIELD 6, COVEXIN PLUS, SAFE GUARD & BOSS POUR ON.

GUARANTEE ON LIVE CALF

WE APPRECIATE YOUR INTEREST IN OUR PREGNANT RECIPIENTS AND UNDERSTAND THE CALF THEY'RE CARRYING IS YOUR FOCAL POINT IN THE INVESTMENT. WE WANT YOUR INVESTMENT TO SUCCEED AND WE STAND BEHIND OUR PRODUCT AS HERD HEALTH US UP TO CHECK AND WE HAVE THE UTMOST CONFIDENCE IN THE RECIPIENT FEMALES. WE DON'T ANTICIPATE ANY ISSUES AT ALL BUT IF YOU LOSE THE CALF BETWEEN SALE DAY AND 24 HOURS AFTER CALVING, WE WILL OFFER A FULL CREDIT ON YOUR PURCHASE PRICE OF THAT LOT MINUS \$2,500 FOR THE VALUE ON THE RECIPIENT FEMALE. THIS CREDIT CAN BE USED IN FUTURE PREGNANT RECIPIENT PURCHASES FROM CANADIAN DONORS. PLEASE NOTE, WE FIND THIS SCENARIO IS DIFFERENT THAN BUYING A PUREBRED BRED HEIFER IN OTHER SALES BECAUSE THE PURCHASER HAS THEIR ENTIRE LIFETIME TO CREATE A ROI ON THEIR PURCHASE EVEN IF THEY UNFORTUNATELY LOSE THE CALF WHEREAS YOUR INVESTMENT IN A PREGNANT RECIPIENT IS MAINLY IN THE CALF INSIDE AND WE WANT TO STAND BEHIND THAT INVESTMENT.

SEXING OF CALVES

THIS YEAR WE DECIDED NOT TO SEX THE CALVES AT PREG CHECKING DUE TO INCORRECT RESULTS FROM RECIPS BROUGHT UP FROM THE USA IN THE PAST.

WELCOME WE LOVE THE LIVESTOCK INDUSTRY AND MOST IMPORTANTLY, THE PEOPLE IN IT. IT TRULY IS WHAT MAKES IT SO ENJOYABLE AND EVEN ADDICTING TO BE INVOLVED AS THE DESIRE TO ENHANCE EACH BREED WITH SUPERIOR GENETICS ALONGSIDE YOUR FRIENDS IS A REWARDING TASK. AT BOHRSON MARKETING SERVICES, OUR MAIN FOCUS IS THE SALES MANAGEMENT AND THAT IS OUR #1 TARGET TO BUILD OUR COMPANY AROUND AND WE ARE FORTUNATE TO HAVE A GREAT TEAM SURROUNDING US TO SERVE OUR CUSTOMERS AS THAT TRULY IS OUR TOP PRIORITY, WITHOUT A DOUBT. AND OVER THE YEARS, WE HAVE BEEN UPFRONT THAT WE ALSO OWN SELECT CATTLE THROUGH CANADIAN DONORS AND WE ENJOY INVESTING IN TOP GENETICS TO SERVE AS AN OUTLET FOR POTENTIAL CUSTOMERS TO ACCESS BLOODLINES THAT THEY MAYBE WOULDN'T BE ABLE TO ACCESS WHETHER IT BE THROUGH EMBRYO SALES OR THIS PREGNANT RECIPIENT SALE. OUR INVESTMENTS INTO RECIPS HAS ALSO BEEN AN ASSET FOR SALES WE RUN AS WE HAVE BEEN ABLE TO PURCHASE MANY STRONG PUREBRED FEMALES OVER THE YEARS, WHILE BIDDING ON COUNTLESS OTHERS WHICH HAS KEPT THE SALES STEADY ON THE BACK END. THESE FEMALES HAVE PROVEN IN THE PAST TO BE WISE INVESTMENTS AFTER CARRYING AN EXCITING EMBRYO CALF. WE TRULY WANT YOU TO SUCCEED WITH ANY PURCHASES IN THIS SALE AND EVERY SINGLE RECIPIENT THAT CAUGHT TO AN EMBRYO AT OUR PLACE IS ON OFFER AND THEY'RE BEING SOLD WITH THE MOST CONFIDENCE. WE BELIEVE IN THESE GENETICS AND TRULY THINK THERE IS SOMETHING FOR EVERYONE TO ACQUIRE AND BENEFIT FROM WITH A STRONG ROI. IF YOU HAVE ANY QUESTIONS, FEEL FREE TO REACH OUT TO OUR FAMILY OR ANY OF THE BMS TEAM AND WE WILL BE GLAD TO ASSIST.



Scott & Rebecca Bohrson

\$9,500
\$9,750

WILLERTON SIMMENTALS **KT RANCHES**



HLTS SAMMIE

ONE OF THE GREAT COWS IN THE BREED THAT RAISED \$152,500 IN HER LAST 2 CALVES

HLTS SAMMIE IS ONE OF THE GREAT FEMALES THAT WE OWN AND SHE IS A PRIME EXAMPLE OF IDEAL SIMMENTAL COW THAT WE STRIVE TO OFFER THE INDUSTRY. WE ABSOLUTELY LOVE THE WAY SHE LOOKS AND EVEN MORE, THE WAY SHE PRODUCES. THE SON THAT SHE RAISED IN 2020, SVS RANCHER WAS A FAVOURITE BULL TO SELL IN THE SPRING OF 2021 FOR \$110,000 WHO IS AWESOME FOOTED, SOUND AND EXTREMELY IMPRESSIVE - ONE OF THE BEST RED BULLS WE HAVE VIEWED IN SOME TIME. IN 2021 SHE RAISED AN INCREDIBLE DAUGHTER, THE \$42,000 SVS/CD SAMMIE 31J THAT A FEATURE IN THE JENNA/ROSE EVENT THIS SUMMER. HLTS SAMMIE ALSO HAS INCREDIBLE EPD'S AND IS IN THE TOP 25% FOR 10/14 OF THE EPD'S. HER MATING TO THE \$161,000 REDDINGTON WHO HAS BEEN KEPT EXCLUSIVE IS ONE OF THE MOST EXCITING MATINGS WE HAVE EVER OFFERED, WE CAN'T WAIT TO SEE THE RESULT OF THESE CALVES DOWN THE ROAD.

1 LOT	HLTS SAMMIE X R PLUS REDDINGTON 0143H RECIP WHIT 309 DUE TO CALVE MARCH 4, 2022
2 LOT	HLTS SAMMIE X R PLUS REDDINGTON 0143H RECIP WHIT 322 DUE TO CALVE MARCH 4, 2022

R PLUS VENOM 4006B R PLUS REDDINGTON 0143H MISS R PLUS 6168D	WS BEEF KING W107 HLTS SAMMIE BRANT DONT YA LOVE ME
---	--

LOTS 1-2 RECIPS: BOTH OF THESE RECIPS ARE COMING 3-YEAR-OLD BLACK COWS THAT ARE GOOD UDDER, SOUND AND PRODUCTIVE. VERY HAPPY WITH THE HARD WORKING COWS WE PURCHASED FROM WHITTEMORE.



\$110,000 RANCHER, SON OF SAMMIE



\$42,500 DAUGHTER OF SAMMIE

\$8,750

DANIEL DE MONTARNAL

\$8,750

CHAD EATON

\$8,750

KT RANCHES



506C
WFL RED SAGE

ONE OF THE MOST INFLUENTIAL COWS IN THE BREED AND DAM OF BETTS & DYNASTY

SAGE 506C HAS BECOME A WORLD-RENOWNED DONOR COW THAT HAS TRULY BEEN A "GREAT ONE" IN EVERY SENSE OF THE MEANING. SHE IS SPECIAL AND HOLDS A CLOSE PLACE TO OUR HEART AS SHE HAS EVOLVED INTO AN INCREDIBLE BREEDING PIECE THAT KNOCKS THEM OUT EACH AND EVERY TIME, NO MATTER HOW SHE IS BRED. SHE HAS SURPASSED A HALF A MILLION DOLLARS IN PROGENY SALES FOR ALL THAT HAVE MARKETED HER PROGENY. MOST NOTABLE SONS WOULD BE THE \$120,000 BETTS THAT IS A TRUE BREEDING LEGEND AND THE \$60,000 DYNASTY THAT WAS GRAND CHAMPION BULL AND FIRST CALF CROP LOOKS INCREDIBLY GOOD. THE 3 RECIPS ARE ALL CARRYING SAGE CALVES OUT OF THE EXCLUSIVE REDDINGTON THAT BROUGHT \$161,000 THAT WAS THE TALK OF THE SPRING IN 2021. OFTEN REFERRED TO AS THE MOST EXCITING AND COMPLETE RED BULL THE BREED HAS SEEN IN SOME TIME WHO STANDS ON A STRONG FOOT AND BACKED BY A TOP COW FROM R PLUS.



\$120,000 BETTS, SON OF SAGE



\$60,000 DYNASTY, SON OF SAGE

3
LOT

WFL RED SAGE 506C X R PLUS REDDINGTON 0143H

RECIP WHIT 343 DUE TO CALVE MARCH 4, 2022

4
LOT

WFL RED SAGE 506C X R PLUS REDDINGTON 0143H

RECIP WHIT 329 DUE TO CALVE MARCH 4, 2022

5
LOT

WFL RED SAGE 506C X R PLUS REDDINGTON 0143H

RECIP WHIT 366 DUE TO CALVE MARCH 4, 2022

R PLUS VENOM 4006B | R PLUS RELOAD 2006Z \ HP-HOP
R PLUS REDDINGTON 0143H | **WFL RED SAGE 506C**
MISS R PLUS 6168D | WFL RED SAGE 1003Y

LOTS 3-5 RECIPS: A TRIO OF WHITEMORE COMING 3 YEAR OLD COWS THAT ARE ANGUS BASED AND HIGHLY MATERNAL. THEY WERE GOOD TO WORK WITH THIS YEAR AND RAISED HEAVY CALVES VERY HAPPY WITH THESE YOUNG COWS.

\$7,000

\$5,500

\$5,750

\$5,250

ROBB FARMS

STEP-N-STONE SIMMENTALS

BONCHUK FARMS

BONCHUK FARMS

68F
CROSSROAD FRANKIE

THE UP AND COMING RED DONOR THAT WE FEEL IS ON THE BRINK OF GREAT THINGS

CROSSROAD FRANKIE 68F IS OUR NEW RED DONOR THAT WE HAVE BIG PLANS FOR AND ONE THAT WE TRULY FEEL WILL FILL IN THE FOOTSTEPS OF HER OLDER PEN MATES, THE HIGHLY PRODUCTIVE WFL SAGE 506C AND HLTS SAMMIE. WE UNDERSTAND THAT IS A HUGE STATEMENT TO PUT HER IN THE SAME LEAGUE AS THOSE 2 PROVEN POWERHOUSES BUT WE FEEL SHE HAS ALL THE SAME QUALITIES TO BE EXACTLY THAT. WE ACQUIRED FRANKIE AFTER PURCHASING THE PICK OF THE 2018 CALF CROP FROM CROSSROAD FARMS AND FRANKIE EASILY ROSE TO THE TOP WHEN WE CONSIDERED COW FAMILY, FOOT QUALITY, UDDER STRENGTH, PERFORMANCE AND OVERALL PHENOTYPE IN ONE COMPLETE PACKAGE. SHE WAS VERY POPULAR DURING THE SUMMER 2021 TOURS AS EVERYONE GRAVITATED TO HER FOR HER AWESOME UDDER, STRONG FEET, HUGE HIP, BIG BODY, SLEEK FRONT END AND OVERALL POWERFUL WEDGE DIMENSION THAT SHE DISPLAYS. THE MATINGS TO RANCHER AND REDDINGTON WILL PUT YOU AHEAD OF THE CURVE AS THESE EXCLUSIVE BULLS WON'T BE ON THE OPEN MARKET FOR A LONG TIME.

Lot 6

CROSSROAD FRANKIE 68F X SVS RANCHER 42H

RECIP: KHG SPLASH 44F DUE TO CALVE JANUARY 16, 2022

SVS TYCOON 84IF | MRC SUPREMACY 260B
SVS RANCHER 42H | **CROSSROAD FRANKIE 68F**
HLTS SAMMIE | ERIXON LADY 16B \ HP-HOP CC-RC

Lot 7

CROSSROAD FRANKIE 68F X R PLUS REDDINGTON 0143H

RECIP: WHIT 313 DUE TO CALVE MARCH 4, 2022

Lot 8

CROSSROAD FRANKIE 68F X R PLUS REDDINGTON 0143H

RECIP: WHIT 314 DUE TO CALVE MARCH 4, 2022

Lot 9

CROSSROAD FRANKIE 68F X R PLUS REDDINGTON 0143H

RECIP: WHIT 359 DUE TO CALVE MARCH 9, 2022

R PLUS VENOM 4006B | MRC SUPREMACY 260B
R PLUS REDDINGTON 0143H | **CROSSROAD FRANKIE 68F**
MISS R PLUS 6168D | ERIXON LADY 16B \ HP-HOP CC-RC



\$161,000 REDDINGTON, SIRE OF LOT 7-9

LOTS 6-9 RECIPS:

LOT 6 - COMING 4-YEAR-OLD RED BALDY PUREBRED SIMMENTAL THAT WE BOUGHT FROM OUR GOOD FRIEND, KEN GILBERT. VERY NICE AND PRODUCTIVE FEMALE THAT YOU WILL GET THE PAPERS ON AS WELL.

LOT 7 - 9 - MORE OF THESE STRONG BLACK YOUNG COMING THREE-YEAR-OLD COWS THAT ARE PRODUCTIVE, MATERNAL AND RAISED IMPRESSIVE CALVES ON THEIR FIRST ATTEMPT.

\$7,750

LEE SHOLOGAN

\$7,250

RUSYLVA CATTLE &

ROBB FARMS

9163G

MISS R PLUS

AWESOME FEET, STRONG UDDER, PRODUCTIVE COW FAMILY & OUTCROSS RED BALDY GENETICS

MISS R PLUS 9163G ROSE TO THE TOP OF ONE OF THE VERY BEST FEMALES THAT WERE SELECTED FROM THE HIGHLY RESPECTED R PLUS PROGRAM. SHE IS A PRIME EXAMPLE OF WHAT THE R PLUS PROGRAM HAS BUILT AROUND AND WHY THEY HAVE BEEN SO SUCCESSFUL OVER THE YEARS. THIS GREAT FOOTED, STRONG UDDER, SOUND STRUCTURE AND FAULT FREE FEMALE RAISED A TOP END HEIFER CALF AT SIDE THIS YEAR AND IT IS A GREAT SIGN FOR THINGS TO COME. HER SIRE, 5015G IS ALSO THE SIRE OF THE \$150,000 YUMA THAT HAS TAKEN THE BREED BY STORM AND SEMEN BROUGHT \$1,000+ PER DOSE. HER DAM, IS A TOP FEMALE AT R PLUS WITH LONGEVITY AND MATERNAL STRENGTH ON HER SIDE WITH A TRUE OUTCROSS PEDIGREE. THE MATING TO THE \$110,000 RANCHER WILL BE A BIG TIME CROSS AND THESE WILL BE AMONG THE VERY FIRST RANCHERS BORN AND YOU'LL BE AHEAD OF THE CURVE BY INVESTING IN THESE AS THEY ARE SURE TO BE HIGHLY SOUGHT AFTER GENETICS. THEY ARE SURE TO BE TOP END CALVES AND HAVE THE MATERNALLY STACKED PEDIGREE THAT WILL BE PROFITABLE FOR YEARS TO COME.

LOT 10
LOT 11

MISS R PLUS 9163G X SVS RANCHER 42H

RECIP: ANCHORAGE PRIDE 6222 DUE TO CALVE JANUARY 16, 2022

MISS R PLUS 9163G X SVS RANCHER 42H

RECIP: ANCHORAGE QUEEN 6223 DUE TO CALVE JANUARY 16, 2022

SVS TYCOON 841F | R PLUS 5015G
SVS RANCHER 42H | MISS R PLUS 9163G
HLTS SAMMIE | MISS 6JR 45Y



\$110,000 RANCHER, SIRE OF LOT 6, 10 & 11

LOTS 10-11 RECIP: THE LOT 10 RECIP, ANCHORAGE PRIDE 222D RAISED HER OWN \$7,500 & \$6,750 SONS THAT BOTH SOLD TO ONE OF THE BEST COMMERCIAL PROGRAMS IN THE BUSINESS, GEHL RANCHES. YOU MAY WONDER WHY DOES SHE HAVE AN EMBRYO IN HER? I ACTUALLY AM NOT ENTIRELY SURE AS SHES GOOD UDDER, SOUND FOOTED, GOOD LOOKING COW AND OBVIOUSLY HIGHLY PRODUCTIVE. WE GOT LOW ON RECIPS IN APRIL AND USED ALMOST EVERY COW FOR A RECIP THAT WASN'T BEING FLUSHED. THE LOT 11 RECIP, ANCHORAGE QUEEN 223D IS VERY SIMILAR TO THE LOT 10 RECIP AND THESE 5 YEAR OLD PUREBRED ANGUS RECIPS ARE THE IDEAL TYPE THAT I WOULD SEND TO ANYONE.

\$4,500

RIVER POINT CATTLE CO



48C
MAF SEANNA

SEANNA IS ONE OF THE BEAUTIFUL AND HIGHLY PRODUCTIVE RED COWS IN THE INDUSTRY

MAF SEANNA 48C WAS THE LEAD OFF FEATURE FEMALE IN THE FIRST MEADOW ACRES SALE AND IS A TRUE DONOR FEMALE WITH HER STRONG, EARLY PRODUCTION RECORD ALONG WITH HER BEAUTIFUL PHENOTYPE. SHE IS FROM A GREAT COW FAMILY, HAS A BEAUTIFUL UDDER, IS STRUCTURALLY SOUND, ATTRACTIVE MADE AND HAS THE VOLUME, DIMENSION AND MUSCLE TO BE MATED MANY DIFFERENT WAYS TO DIFFERENT SIRES AND SHE WILL COME THROUGH. THIS IS THE PRIME OPPORTUNITY TO ACQUIRE STRONG GENETICS WITH THIS CORNERSTONE DONOR DAM AND THE EXCLUSIVE SIRE, STF CRIMSON TIDE DZ87. CRIMSON TIDE SEMEN WAS EXCLUSIVELY SOLD WITH VERY LITTLE GOING OUT AND AND HE DID A GREAT JOB BREEDING. WE ARE VERY HIGH ON SEANNA 48C AND HER POPULARITY WILL CONTINUE TO GROW, ESPECIALLY AFTER WHEN YOU SEE THE FEATURE HEIFER IN THE MEADOW ACRES DISPERSAL THAT THEY GOT FROM AN EMBRYO PURCHASE. THESE GENETICS ABSOLUTELY WORK AND WE ARE KEEN TO SEE THIS CALF IN THE SUMMER OF 2022 AS IT IS SURE TO BE A COOL ONE.

LOT 12

MAF SEANNA 48C X STF CRIMSON TIDE DZ87

RECIP DRI 819 DUE TO CALVE JANUARY 16, 2022

CDI RIMROCK 325Z | NUG ROYAL RED 324A
STF CRIMSON TIDE DZ87 | **MAF SEANNA 48C**
STF MISS ZW87 | IPU MS. BARTENDER 89Z

LOT 12 RECIP: STRONG RED BACLDY 4-YEAR-OLD RECIP FEMALE THAT WE RECEIVED FROM DAVIS RAIRDAN, SHE IS A GOOD FEMALE.



MAF SEANNA 129J - DAUGHTER OF 48C



MAF MR 167J - SON OF 48C

\$6,500
\$6,500

CLEARWATER SIMMENTALS **CLEARWATER SIMMENTALS**



748E
WJS ERIKA

HOMO POLLED FLECK THAT IS PERFECT UDDER, STRONG FOOTED, BEAUTIFUL & HIGHLY PRODUCTIVE

HOMOZYGOUS POLLED FULL FLECKVIEH DONOR, WJS ERIKA 748E IS THE EXACT DONOR COW WE WANT TO BUILD AROUND AND MAKE MORE OF AS SHE CHECKS OFF EVERY BOX. SHE IS PERFECT UDDER, STRONG FOOTED, BROODY MADE AND RAISED AN IMPRESSIVE HEIFER CALF THAT IS DESTINED TO FOLLOW IN HER DONOR DAMS FOOTSTEPS. WE TRULY THINK THE WORLD OF THIS DONOR AND SHE IS A PERSONAL FARM FAVOURITE WHO HAS THE FULL POTENTIAL TO INCREASE PROFITABILITY FOR EVERYONE THAT UTILIZES HER GENETICS. SHE HAS RAISED AN \$8,500 CALF AND EVEN THOUGH SHE ISN'T AS GIVING WITH HER EMBRYO PRODUCTION, WHEN CALVES ARRIVE FROM 748E THEY ARE ALWAYS AT THE VERY TOP END. SHE DOES SO MUCH RIGHT WITH PHENOTYPE AND GENOTYPE PLUS ALSO LANDS IN THE TOP 50% FOR 12 OF THE 14 EPD'S AND THIS HOMO POLLED FEMALE IS POWERFUL AND TOP 3% FOR WW, TOP 4% FOR YW, TOP 2% FOR MILK, TOP 10% FOR MCE AND TOP 1% FOR MWV. THE MATINGS TO VIPER WILL BE HUGE TIME AND WE EXPECT GREATNESS TO ENSUE.

LOT 14

WJS ERIKA 748E X ANCHOR D VIPER I03W

RECIP: BOHRS SPLASH 0305 DUE TO CALVE JANUARY 16, 2022

LOT 15

WJS ERIKA 748E X ANCHOR D VIPER I03W

RECIP: YACKLEY 760 DUE TO CALVE FEBRUARY 21, 2022

DOUBLE BAR D MAESTRO 100S | ANCHOR D RAPTOR 392C
ANCHOR D VIPER I03W | **WJS ERIKA 748E**
PRL LOPEZ 147L | PHS YOUR CHOICE



ULTRA ELIZA 749E, FULL SIB TO 748E



ANCHOR D VIPER I03W

LOTS 14-15 RECIP: NOTE, LOT 14 RECIP IS A PUREBRED SIMMENTAL BRED HEIFER THAT IS WESTGOLD BREEDING THROUGHOUT. VERY GOOD FEMALE THAT YOU CAN INVEST IN WITH CONFIDENCE. LOT 15 IS A GOOD LOOKING RED COMMERCIAL FEMALE THAT WAS SENT TO US FROM THE USA, ONE OF THE BEST LOOKING COWS AT OUR PLACE IN LONG GRASS - NOTE, SHE DOES ROLL ON HER BACK RIGHT FOOT BUT DOESNT EFFECT HER AND SHE RAISED THE HEAVIEST CALF LAST FALL.

\$6,750
\$7,000
\$6,250

**GREENWOOD CATTLE &
BLACK GOLD SIMMENTALS
MUD BUTTE SIMMENTALS
CIRCLE G SIMMENTALS**



9236G
MISS R PLUS

OUR PICK OF THE R PLUS 2019 BORN FEMALES WITH A STACKED PEDIGREE AND GREAT LOOK

WE ARE FORTUNATE TO PURCHASE THE PICK AT R PLUS WITH OUR GOOD FRIEND, QUINN WILSON THIS SPRING AS A \$30,000 SALE FEATURE. 9236G ROSE TO THE TOP AS OUR SELECTION AS SHE COMBINED AN AWESOME PEDIGREE, PHENOTYPE TO BURN AND HAD A STOUT AND IMPRESSIVE BALDY BULL CALF AT SIDE. SHE IS VERY FERTILE AND FLUSHED WELL THIS SPRING BUT UNFORTUNATELY GOT HURT AND THAT IS WHY SHE DIDN'T MAKE IT IN THE WILSON DISPERSAL CATALOGUE. REGARDLESS, SHE IS A SPECIAL BREEDING PIECE THAT HAS A TONNE OF FUTURE AS HER SIRE IS THE FAMOUS 5015C AND THE BOTTOM SIDE IS A BEAUTIFUL DONOR. JETSTREAM BRIGHT N CLASSY WAS A PAST ROYAL GRAND CHAMPION FEMALE AND IS AWESOME UDDER, BIG BODIED, POWERFUL AND IDEAL IN HER DESIGN. THE MATINGS TO THE \$110,000 RANCHER WILL BE AMONG THE FIRST TO HIT THE GROUND AND COMBINING SAMMIE AND BRIGHT N CLASSY WILL BE A BIG TIME COMBINATION WITH ENDLESS POSSIBILITIES ON ROI.

LOT 16
LOT 17
LOT 18

MISS R PLUS 9236G X SVS RANCHER 42H
RECIP: 3040 DUE TO CALVE JANUARY 20, 2022

MISS R PLUS 9236G X SVS RANCHER 42H
RECIP: COME AS U R HOLLY 903G DUE TO CALVE JANUARY 20, 2022

MISS R PLUS 9236G X SVS RANCHER 42H
RECIP: MDR 76 DUE TO CALVE FEBRUARY 26, 2022

SVS TYCOON 841F | R PLUS 5015C
SVS RANCHER 42H | **MISS R PLUS 9236G**
HLTS SAMMIE | JETSTREAM BRIGHT N CLASSY



BRIGHT N CLASSY, DAM OF 9236G

LOTS 16-18 RECIPS:

LOT 16 - THIS IS A GOOD FOOTED, SOLID UDDER, RED COMMERCIAL COW THAT RAISED THE HEAVIEST ET BULL CALF IN HER LAST ATTEMPT

LOT 17 - I CAN HIGHLY RECOMMEND THIS COMING 3-YEAR-OLD PUREBRED SIMMENTAL TO ANYONE. SHE IS VERY GOOD AND CHECKS OFF ALL THE BOXES, BUY WITH CONFIDENCE.

LOT 18 - WE PICKED UP A FEW BREDS FROM OUR FRIENDS, THE MADERS AND SNUCK THIS HIGH QUALITY RIO GRANDE DAUGHTER OUT. I DON'T EXPECT THE PURCHASER TO USE HER AS A RECIP GOING FORWARD AS SHE IS STRONG QUALITY AND SELLS WITH PAPERS.

\$4,900
\$4,900
\$4,600
\$6,000

ERIXON SIMMENTALS
HOEGL LIVESTOCK
CURTIS SIMMENTALS
SUN RISE SIMMENTALS



8465F
MRL MISS

PERFECT FEET, STRONG UDDER AND HIGHLY PRODUCTIVE YOUNG DONOR WITH A BRIGHT FUTURE

OUR PICK OF MRL SALE 2 FALLS AGO WAS 8465 AND SHE IS EVERYTHING YOU CAN ASK FOR IN A YOUNG DONOR FEMALE. HER FIRST BULL CALF BROUGHT \$10,500 AND WE RANK 8465F FEET AS NEAR PERFECT, SHE IS STRONG UDDER AND EXTREMELY FERTILE. IN THE MRL CATALOG, LEE MCMILLEN SAID THAT 8465F WAS "THE MOST ADMIRER HEIFER IN THE PEN" AND "PHENOTYPICALLY WE HAVE NEVER SOLD ONE MUCH BETTER". WE GUARANTEE WE ARE JUST SEEING THE TIP OF THE ICEBERG ON WHAT SHE WILL PRODUCE AND THE MATING TO CALIBER WILL BE EXPLOSIVE. CALIBER IS A BIG TIME HERD BULL THAT COMMANDED \$150,000 THIS SPRING TO KT RANCHES & CANADIAN SIRES AND WAS KEPT EXCLUSIVE WITH ONLY SEMEN SELLING TO LABATTE & LEWIS. WE THINK CALIBER IS CERTAIN TO BE ONE OF THE PROMINENT BREEDING BULLS IN THE INDUSTRY GOING FORWARD.

19
LOT

MRL MISS 8465F X RF CALIBER 014G
 RECIP: AND 77 DUE TO CALVE FEBRUARY 5, 2022

20
LOT

MRL MISS 8465F X RF CALIBER 014G
 RECIP: AND 80 DUE TO CALVE FEBRUARY 5, 2022

21
LOT

MRL MISS 8465F X RF CALIBER 014G
 RECIP: WHIT 318 DUE TO CALVE FEBRUARY 21, 2022

22
LOT

MRL MISS 8465F X RF CALIBER 014G
 RECIP: AND 74 DUE TO CALVE FEBRUARY 23, 2022

23
LOT

MRL MISS 8465F X RF CALIBER 014G
 RECIP: MADER HENRIETTA 128G DUE TO CALVE FEBRUARY 5, 2022

NGDB STRUCTURE 34D | MRL BLACK TOP 127A
RF CALIBER 014G | **MRL MISS 8465F**
 NGDB STRUCTURE 34D | MRL MISS 5310C



\$150,000 RF CALIBER 014G

LOTS 19-23 RECIPS:

LOT 19-22 - THESE ARE MORE ANGUS BASED COMING THREE-YEAR-OLD FEMALES BOUGHT FROM ANDERSON CATTLE AND CHASE WHITFIELD THAT WE ARE VERY HAPPY WITH. MATERNAL MADE AND STRONG FOOTED CATTLE.

LOT 23 - THE MADER BREDS WE PICKED UP LAST FALL WORKED OUT GREAT AND THIS IS A STRONG QUALITY FEMALE. IPU 52N POCAHONTAS 215U, KWA MS ROCK 22Z, LRX MS AGE 10X & ERIXON LADY 202S ARE ALL REPRESENTED IN HER PEDIGREE AND INFLUENTIAL DONORS IN THE BREED.

\$4,600

PETERS SIMMENTALS



8047
CD JOY'S ELEGANCE

STACKED MATERNAL PEDIGREE THAT IS LOADED WITH PREDICTABILITY AND MARKETABILITY

HERE IS THE NEXT GENERATION DONOR ON OFFER FROM ONE OF THE FOUNDATION FEMALES AT CANADIAN DONORS, THE JOYS ELEGANCE COW FAMILY. MANY PROGRESSIVE PROGRAMS ACROSS THE INDUSTRY ARE BUILDING THEIR OWN JOY COW FAMILIES AND HAVE ENJOYED SUCCESS WITH THESE GENETICS; HERE IS YOUR CHANCE TO BUILD YOUR OWN. THIS STEPPING STONE FEMALE EXEMPLIFIES THE BEST PHYSICAL QUALITIES OF BOTH SIDES OF HER PEDIGREE WHILE BRINGING FORWARD AN IMPRESSIVE EPD PROFILE AND API OVER 145. WE THINK THIS IS A COOL OPPORTUNITY AND THIS WILL BE THE LAST GENETICS WE SELL OFF THE STRONG 8047 DONOR AS WE SOLD HER IN THE FLIRT SALE TO BRENDALDE ACRES FROM ONTARIO. SHE HAS A BRIGHT FUTURE AND FEEL THE MATING TO STIMULUS WILL BE IDEAL AS WE ARE COMBINING MANY OF THE VERY BEST MATERNAL BLOODLINES IN THE BUSINESS WITH JOY, HOPE FLOATS, JENNA AND FLIRT.

LOT 24 **CD JOY'S ELEGANCE 8047 X RF/RUST STIMULUS 610D**
RECIP WHIT 331 DUE TO CALVE FEBRUARY 23, 2022

TNGL GRAND FORTUNE Z467	WS STEPPING STONE B44
RF/RUST STIMULUS 610D	CD JOYS ELEGANCE 8047
RF NOT JUST A FLIRT 404B	AJE/JF ANT JOYS ELEGANCE

LOT 24 RECIP: ANOTHER STRONG COMING THREE-YEAR-OLD COW THAT IS RIGHT IN HER TYPE. WHITTEMORE HAS BOUGHT TOP BULLS FROM ARDA & ULTRA AND WE LIKE THIS GROUP OF RECIPS.



JOYS ELEGANCE, MATERNAL GRANDAM



FLIRT 404B, PATERNAL GRANDAM

\$4,800
\$4,600
\$4,500
\$4,500

SUNBERRY VALLEY RANCH
MAVV FARMS INC
SUNBERRY VALLEY RANCH
SUNBERRY VALLEY RANCH



60A
RED U-2 MABEL

THE DAM OF THE \$46,000 MALBEC AND MATED TO THE EXCLUSIVE GENESIS 103G

THE HISTORIC U2 RANCH DISPERSAL SAW MANY INFLUENTIAL DONORS SELL THROUGHOUT THE WORLD BUT AS WE STUDIED THE PROGRAM CLOSELY THROUGHOUT THE ENTIRE YEAR, MABEL 60A ROSE TO THE TOP AS THE SPECIFIC DONOR WE NEEDED TO ACQUIRE TO BOAST OUR RED ANGUS DONOR DIVISION. HER EMBRYOS BY BLUE COLLAR WERE THE HIGH SELLING EMBRYO PACKAGE IN THE SALE AND SHE IS A NEVER MISS COW AND A HERD SIRE PRODUCER WHO HAS RAISED THE \$46,000 GENEX SIRE MALBEC 195D AND THE \$16,000 ANCHOR I SIRE MERLOT 266F. THE COPENHAGEN DAUGHTERS WERE FEATURES OF THE DISPERSAL AND CONSISTENTLY SOME OF THE NICEST MADE, MOST BALANCED FEMALES ON OFFER. 60A HERSELF HAS A TON OF STYLE, PRESENCE, AND OVERALL QUALITY COMBINED WITH IMPECCABLE UDDER AND FOOT STRUCTURE. WITH GENESIS NOT PRODUCING SEMEN AND NEXT TO NO INVENTORY, HE HAS BEEN TAKEN OFF THE OPEN MARKET AS SUPPLIES ARE SCARCE AND THE CALVES ARE EXTREMELY GOOD ... HERE IS A BIG TIME OPPORTUNITY.

25
LOT

RED U-2 MABEL 60A X RED U2 GENESIS 103G

RECIP: WHIT 374 DUE TO CALVE FEBRUARY 15, 2022

26
LOT

RED U-2 MABEL 60A X RED U2 GENESIS 103G

RECIP: WHIT 362 DUE TO CALVE FEBRUARY 15, 2022

27
LOT

RED U-2 MABEL 60A X RED U2 GENESIS 103G

RECIP: WHIT 307 DUE TO CALVE FEBRUARY 21, 2022

28
LOT

RED U-2 MABEL 60A X RED U2 GENESIS 103G

RECIP: WHIT 328 DUE TO CALVE FEBRUARY 21, 2022

RED HOWE MAGNUM 169W RED MINBURN COPENHAGEN 3Y
RED U2 GENESIS 103G **RED U-2 MABEL 60A**
 RED U-2 LAKOTA 54B RED U-2 MABEL 706IT



\$46,000 MALBEC, SON OF MABEL 60A



\$16,000 MERLOT, SON OF MABEL 60A

LOT 25-28 RECIPS: THESE ARE FROM THE GOOD GROUP OF COMING 3-YEAR-OLDS THAT RAISED STRONG CALVES AND HAVE A LIFETIME AHEAD OF THEM.

\$4,850
\$4,950

JONATHAN GRUNERT
CSI ANGUS



BLAIR'S FOREVER LADY 674D

AWESOME COW THAT FLAT OUT PRODUCES AND IS MATED TO THE INCREDIBLE TRIUMPH SIRE

BLAIRS FOREVER LADY 674D WAS AMONG OUR THE VERY BEST TO SELL AT BLAIRS.AG AND WAS A FEATURE COW THAT WE WERE HAPPY TO INVEST IN WITH KT RANCHES AS ONE OF THE HIGH SELLERS THAT DAY. SHE RAISED AN IMPRESSIVE SOUTH POINT BULL CALF THIS YEAR THAT WAS A STANDOUT THROUGHOUT THE SUMMER IN THE DONOR PASTURE AND HAS PROVEN HER WORTH AS SHE IS THE IDEAL ANGUS TYPE. THIS TANK, GOOD LOOKING, STRONG UDDER, GOOD FOOTED, BEAUTY OF A COW WAS MATED WITH ONE OF THE MOST EXCITING BULLS IN THE BUSINESS, COLEMAN TRIUMPH 9145. WE HAVE ALWAYS BEEN A HUGE FAN OF TRIUMPH AS HIS DAM IS INCREDIBLE IN HER DESIGN AND AFTER WE WENT TO COLEMANS IN OCTOBER AND SAW 2 FULL SISTERS TO TRIUMPH, WE ARE CERTAIN HE WILL BE A SPECIAL BREEDING BULL. THOSE 2 AWESOME FEMALES BROUGHT \$375,000 AND \$150,000 BOTH FOR 1/2 INTEREST AND THEY WERE SOMETHING TO BE JACKED UP ABOUT. INVEST IN THESE MATINGS AS WE OFFER EVERY RECIP AND DON'T HOLD ANY BACK, IF WE DID, THESE WOULD BE AT THE TOP.

29
LOT

BLAIR'S FOREVER LADY 674D X COLEMAN TRIUMPH 9145

RECIP: AND 64 DUE TO CALVE FEBRUARY 5, 2022

30
LOT

BLAIR'S FOREVER LADY 674D X COLEMAN TRIUMPH 9145

RECIP: AND 79 DUE TO CALVE FEBRUARY 5, 2022

OLEMAN BRAVO 6313 DUFF NAPOLEON 232
COLEMAN TRIUMPH 9145 **BLAIR'S FOREVER LADY 674D**
LAWSON'S CHLOE C815 DWS BC FOREVER LADY 986



\$225,000 COLEMAN TRIUMPH 9145



\$750,000 FULL SISTER TO TRIUMPH - 9275

LOTS 29-30 RECIPS: A PAIR OF COMING THREE-YEAR-OLD ANGUS FEMALES THAT WERE BOUGHT AT THE TOP OF THE ANDERSON CUSTOMER APPRECIATION SALE LAST DECEMBER. YOUNG COWS THAT ARE CORRECT IN THEIR DESIGN.

\$4,700

BROOKING ANGUS



670D
BLAIR'S DIXIE ERICA

COMBINING ONE OF THE MOST EXPLOSIVE ANGUS DONORS WITH THE EMERALD ... HUGE ROI OPPORTUNITY

BLAIRS DIXIE ERICA 670D IS A PERSONAL FAVOURITE DONOR AND ONE THAT COMBINES AN AWESOME WEDGE SHAPE PHENOTYPE WITH A STACKED PEDIGREE. SHE IS IMPRESSIVELY BIG HIPPED, HEAVY MUSCLED, LEVEL TOPPED, SOFT MIDDLE, SMOOTH SHOULDERED AND ERECT FRONTED WITH A SLEEK NECK AND PRETTY HEAD. SHE IS GOOD UDDER AND SOUND FOOTED WHILE BEING EXTREMELY ATHLETIC, SHE IS A HIGH QUALITY INDIVIDUAL AND ONE THAT IS A SPECIAL BREEDING PIECE. THE DIXIE ERICA COW FAMILY IS ONE OF THE MOST FAMOUS WITHIN THE BREED AND IT IS FEMALES LIKE THIS ON WHY THEY HAVE BECOME SO POPULAR. THE MATING WITH EMERALD WILL MAKE AN EXPLOSIVE CROSS AND ONE THAT WILL PUT YOU AHEAD OF THE CURVE AS HE IS A SIRE ABOUT TO TAKE OFF WITHIN THE BREED. THE LARGEST SIRE GROUP AT BROOKING IN 2022 WILL BE EMERALD AND THAT SHOWS THE CONFIDENCE THEY HAVE IN WHAT HE WILL BE ABLE TO DO IN THE INDUSTRY. HERE IS A CHANCE TO GET THE FIRST GENETICS ON THE GREAT EMERALD!

31
LOT

BLAIR'S DIXIE ERICA 670D X BROOKING EMERALD 9179

RECIP: WHIT 335 DUE TO CALVE MARCH 4, 2022

S A V RENOVATION 6822 | DUFF NAPOLEON 232
BROOKING EMERALD 9179 | **BLAIR'S DIXIE ERICA 670D**
BROOKING BEAUTY 605I | DUFF BL 512 DIXIEERICA 012



\$94,500 BROOKING EMERALD 9179



BROOKING BEAUTY 605I, DAM OF EMERALD

LOT 31 RECIP: ANOTHER STRONG COMING THREE-YEAR-OLD ANGUS COW THAT IS SOUND, MATERNAL AND RAISED ONE OF THE HEAVIEST CALVES AT SIDE THIS SUMMER.

\$5,000

ARDEN WRAY



239A
PEAK DOT PRISCILLA

PRISCILLA 239A IS A PICTURE PERFECT DONOR THAT IS MATED WITH THE POPULAR GUARANTEE

OURSELVES AT CANADIAN DONORS HAD THE OPPORTUNITY TO GO INTO THE PEAK DOT PROGRAM AND SELECT DONORS FROM THE VERY TOP OF THEIR PROGRESSIVE HERD AND PEAK DOT PRISCILLA 239A WAS OUR TOP PICK. SHE IS A TRUE BEEF COW THAT YOU WANT TO DUPLICATE AND HAVE A PASTURE FULL OF AS SHE IS SO MATERNAL IN HER TYPE WITH AN ATTRACTIVE FRONT END, NICE HEAD, HUGE BARREL, LEVEL TOP, STRONG UDDER AND GOOD FEET WHILE BEING ATHLETIC AND SOUND. THIS BIG HIPPED FEMALE HAS NATURAL SHAPE AND MUSCLE THROUGHOUT AND HAS NOT ONLY BEEN A GOOD LOOKING INDIVIDUAL BUT A HIGHLY PRODUCTIVE DONOR. WE THINK GUARANTEE HAS A WORLD OF FUTURE AHEAD OF HIM AND WITH HIS LIMITED SEMEN ARRIVING IN CANADA THIS SPRING, THIS WILL BE YOUR CHANCE TO GET ONE OF THE FIRST CALVES BORN IN CANADA FROM HIM. WE PRIDE OURSELVES ON SOURCING THE BEST COW FAMILIES IN THE BUSINESS AND PRISCILLA 239A IS MOST CERTAINLY ONE OF THEM.

LOT 32

PEAK DOT PRISCILLA 239A X CRAWFORD GUARANTEE 9137

RECIP: HLC FUTURE MARKER 380F DUE TO CALVE JANUARY 5, 2022

CONNEALY PAYRAISE
CRAWFORD GUARANTEE 9137
CRAWFORD MS ARMORY D40

VISION UNANIMOUS 1418
PEAK DOT PRISCILLA 239A
PRISCILLA OF PEAK DOT 695X

LOTS 32 RECIPS: FIRST CLASS, CLASSEN, 004, FREEDOM 104, FINAL ANSWER ARE ALL REPRESENTED IN THIS COMING 4-YEAR-OLD REGISTERED FEMALE THAT IS VERY NICE IN HER TYPE.



PEAK DOT ELIMINATOR 77C, SON OF 239A



SIRE OF EMBRYO CALF - GUARANTEE

\$4,700
\$4,500

NYK CATTLE CO
NYK CATTLE CO



247C
PEAK DOT MIA

DAM OF ONE OF THE MOST EXCITING BULLS TO SELL IN 2021, THE \$35,000 PEAK DOT PROFOUND 83H

PEAK DOT MIA 247C IS THE IDEAL DONOR AND ONE THAT NEEDS TO BE INVESTED IN WITH CONFIDENCE AS SHE IS EXTREMELY FERTILE AND CAN RAISE BIG TIME PROGENY. THE UNANIMOUS CATTLE FLAT OUR PRODUCE AND 247C IS AMONG THE VERY BEST DONORS AT PEAK DOT AND RAISED A PERSONAL FAVOURITE BULL TO SELL IN 2021, THE \$35,000 PEAK DOT NEWFOUND 247C. HE WAS EXTREMELY STOUT, HAIRY, BIG HIPPED, GOOD LOOKING, STRONG FOOTED AND HE WOULD'VE GOT MANY OF THOSE QUALITIES FROM HIS DAM. HE WAS LARGE SCROTAL AND FERTILITY RUNS DEEP IN THE GENETICS AS 247C IS ONE OF THE TOP EMBRYO PRODUCING DONORS WE FLUSHED THIS SUMMER AT CANADIAN DONORS AND WE DID JUST SHY OF 30 IN TOTAL. PEAK DOT SUPPLIED SEMEN ON THEIR EXCITING AND EXCLUSIVE NEW SIRE, THE \$40,000 ELLINGSON BIG RIVER 0052 THAT WAS A STANDOUT IN THE 2021 ELLINGSON SALE. THESE ARE EXCITING MATINGS AND DEFINITELY ONES THAT WILL FLAT OUT WORK.

33
LOT

PEAK DOT MIA 247C X ELLINGSON BIG RIVER 0052

RECIP: WHIT 306 DUE TO CALVE MARCH 4, 2022

34
LOT

PEAK DOT MIA 247C X ELLINGSON BIG RIVER 0052

RECIP: WHIT 323 DUE TO CALVE MARCH 4, 2022

ELLINGSON THREE RIVERS 8062 VISION UNANIMOUS 1418
ELLINGSON BIG RIVER 0052 **PEAK DOT MIA 247C**
EA BLACKCAP 4053 MIA OF PEAK DOT 316Y

LOT 33 & 34 RECIPS: THESE ANGUS BASED 2019 BORN FEMALES RAISED STRONG CALVES IN THEIR FIRST ATTEMPT AND WERE VERY FERTILE WHEN BREEDING BACK TO CARRY THESE EMBRYOS,



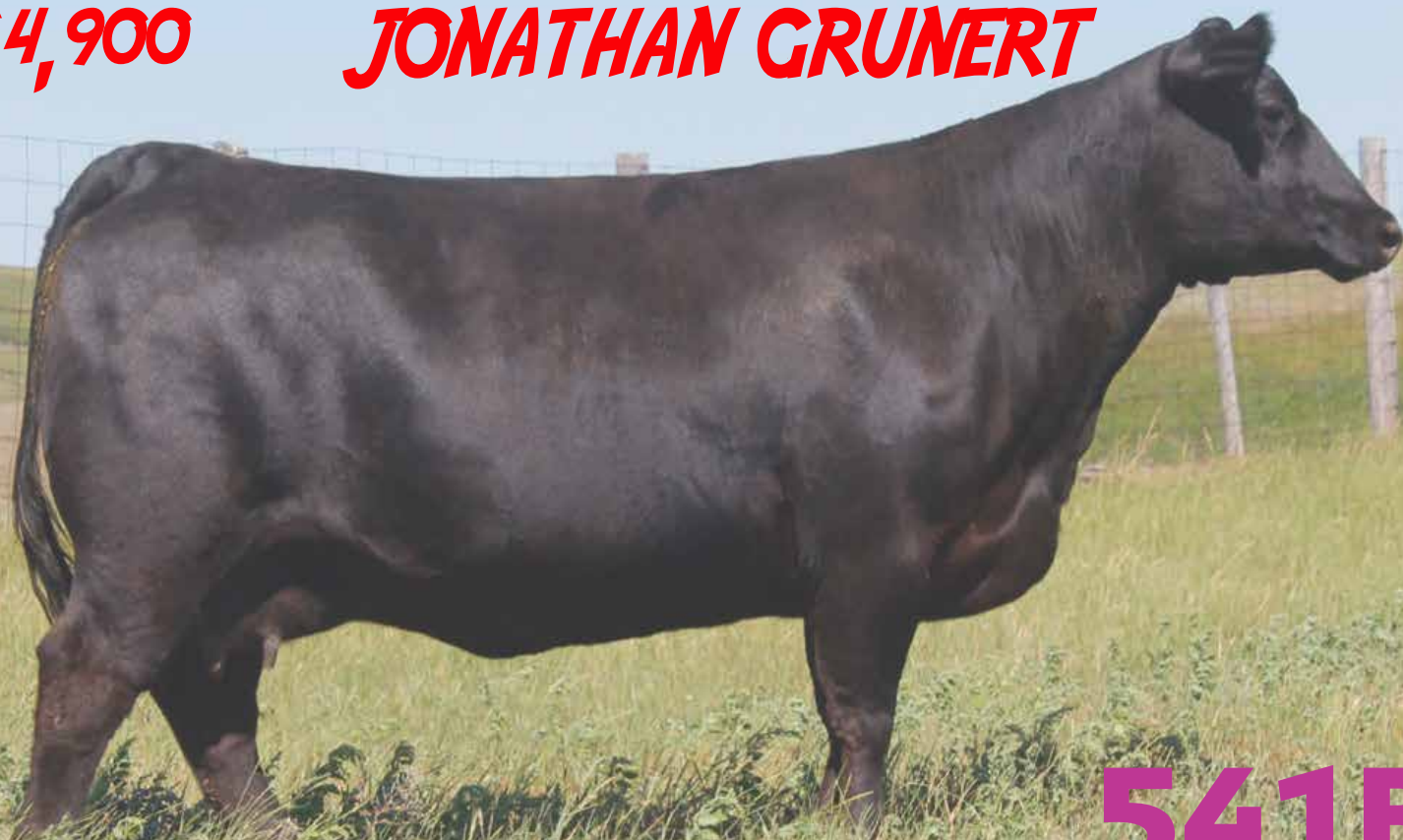
\$35,000 PDAR 83H, SON OF 247C



ELLINGSON BIG RIVER 0052

\$4,900

JONATHAN GRUNERT



541B
PEAK DOT HEATHER

POWERFUL AND BEAUTIFULLY CONSTRUCTED DONOR THAT IS A POTENT BREEDING PIECE

PEAK DOT HEATHER 541B IS AN IMPRESSIVE LOOKING DONOR THAT IS A BIG TIME PRODUCER THAT HAS RAISED MANY FEATURE BULLS IN YEARS PAST AND DAUGHTERS RETAINED AT PEAK DOT AT THE TOP OF THEIR PROGRAM. THE SUCCESSFUL PROGENY THAT THIS DONOR HAS PRODUCED OVER MULTIPLE SIRES IS A TRUE TESTAMENT TO HER BREEDING CAPABILITIES. SHE IS AWESOME UDDER, GOOD FOOTED, BIG HIPPED, WELL BALANCED, ATTRACTIVE FRONTED AND HAS THAT TRUE MATERNAL LOOK. WE THINK THE WORLD OF GUARANTEE AND THAT WILL BE A BIG TIME MATING WITH 541B.

35
LOT

PEAK DOT HEATHER 541B X CRAWFORD GUARANTEE 9137

RECIP: J SQUARE S KARAMA 943G DUE TO CALVE JANUARY 5, 2022

CONNEALY PAYRAISE
CRAWFORD GUARANTEE 9137
CRAWFORD MS ARMORY D40

PEAK DOT PROOF 1066X
PEAK DOT HEATHER 541B
HEATHER OF PEAK DOT 850X



PEAK DOT ROUGHRIDER 1071G, SON OF 541B



PEAK DOT ROUGHRIDER 1113H, SON OF 541B



PEAK DOT ATTRACTIVE 371H, SON OF 541B



PEAK DOT NO DOUBT 153F, SON OF 541B



PEAK DOT COLOSSAL 1056G, SON OF 541B



PEAK DOT COLOSSAL 1073G, SON OF 541B

LOT 35 RECIP: LUTE, TIGER, DENSITY AND THE KARAMA COW FAMILY ALL WRAPPED UP IN A HIGH QUALITY YOUNG FEMALE. WE LIKE THIS ONE AN AWFUL LOT AND FOR GOOD REASON, WE CONFIDENTLY CAN SEND THIS TYPE OF FEMALE ANYWHERE AND IS CARRYING AN EXCITING CALF.

\$7,250

WAUTER VALLEY RANCH



58F
HF MISS BLACKCAP

BLACKCAP 58F WAS OUR PICK OF HERD AT HAMILTON FARMS & MATED TO THE EXCITING BLOODLINE

HF MISS BLACKCAP 58F WAS THE PICK OF THE 2018 HAMILTON CALF CROP! HF BLACKCAP 58F WAS OUR PICK OF THE ENTIRE CALF CROP AND FROM THE BREED LEADING HAMILTON FARMS PROGRAM. WITH SO MANY OPTIONS FROM A GREAT SET OF CATTLE, 58F RISEN TO THE TOP AND CHECKED OFF ALL THE BOXES TO INVEST WITH CONFIDENCE THAT WE ARE GETTING A FUTURE GREAT ONE. AFTER OUR PICK, IT WAS REWARDING TO HEAR THE FEEDBACK FROM THE HAMILTON FAMILY IN A CONVERSATION AT DENVER THAT SHE WAS THEIR PICK AS WELL AND KNOW SHE IS DESIGNED FOR A BRIGHT FUTURE. HER FIRST CALF BY PRESIDENT IS A STUD AND ONE THAT HAS SO MUCH QUALITY AND FURTHER PROVED THE GREAT BREEDING POTENTIAL OF THIS FEMALE. HER MATING TO BLOODLINE WILL SURELY BE REWARDING AND WE CAN'T WAIT TO TRAVEL AND VISIT THE SUCCESSFUL PURCHASER NEXT SUMMER AND VIEWING THIS EXCITING CALF.

36

HF MISS BLACKCAP 58F X S A V BLOODLINE 9578

RECIP: 23 DUE TO CALVE JANUARY 3, 2022

S A V RAINFALL 6846 | HA COWBOY UP 5405
S A V BLOODLINE 9578 | **HF MISS BLACKCAP 58F**
S A V EMBLYNETTE 2369 | HF MISS BLACKCAP 228B

LOT 36 RECIP: THIS IS ONE OF MY VERY FAVOURITE RECIPS IN OUR PROGRAM AND I WOULD SEND HER WITH CONFIDENCE TO ANYONE.



\$250,000 S A V BLOODLINE 9578



S A V EMBLYNETTE 2369, DAM OF BLOODLINE

\$7,000
\$5,500

TYLER WRAY
ARDEN WRAY



7178
MTC ABIGALE

GREAT MATERNAL PEDIGREES ARE LINED UP WITH LEGACY 839L, BISMARCK & ABIGALE

THE ABIGALE COW FAMILY IS ONE OF THE MOST FAMOUS AND PROLIFIC AT SCHAFF ANGUS VALLEY AND ONE OF THE MOST INFLUENTIAL IN THE BREED. IF YOU SEARCH THE COW FAMILIES ON THE SAV WEBSITE YOU WILL NEARLY GO DIZZY TRYING TO KEEP TRACK OF ALL THE STRONG ABIGALES THAT ARE PICTURED AND IT IS A NAME YOU HEAR OVER AND OVER AT THE ANNUAL SAV SALE. AT THE 2018 BROOKING INVITATIONAL SALE, MITCH AND JODIE CAMPBELL OFFERED THIS DOUBLE BRED ABIGALE FEMALE IN A BISMARCK, NET WORTH, 5175 PACKAGE AND WE ACQUIRED HER AS THE TOP SELLING BRED HEIFER THAT DAY. SHE HAS MATURED AS EXPECTED WITH OUR HIGH EXPECTATIONS AND JOINED OUR DONOR ROSTER. WE FEEL THE MATING TO OCC LEGACY 839L WILL BE AN AWESOME MATING AND HIS SEMEN HAS BROUGHT \$1,000+/DOSE. WE DON'T GUARANTEE SEXING OF CALVES BUT IF YOU'RE READING THIS LONG FOOTNOTE, I WILL TIP YOU OFF AND LET YOU KNOW THE VET STATED THE 31C RECIP IS CARRYING A HEIFER CALF AND THE 551G RECIP WASN'T SEXED.

37
lot

MTC ABIGALE 7178 X O C C LEGACY 839L

RECIP: RIVERSTONE ELSA ERICA 31C DUE TO CALVE JANUARY 21, 2022

38
lot

MTC ABIGALE 7178 X O C C LEGACY 839L

RECIP: HLC JUDY 551G DUE TO CALVE FEBRUARY 28, 2022

O C C ECHELON 857E | S A V BISMARCK 5682
O C C LEGACY 839L | MTC ABIGALE 7178
O C C DIXIE ERICA 960E | S A V ABIGALE 9144



OCC LEGACY 839L



\$11,000 DAUGHTER OF LOT 37 RECIP

LOTS 37-38 RECIPS: FIRSTLY, I KNOW WE GONE AND MESSED UP WHEN WE IMPLANTED AN EMBRYO IN THE LOT 37 RECIP, 31C. BUT BEFORE WE ACCESSED THE PACKAGE OF 26 WHITTEMORE PAIRS, WE WERE VERY SHORT ON RECIPS AND WERE UTILIZING ANY STRONG COW WE WEREN'T FLUSHING. 31C RAISED A \$11,000 NATURAL DAUGHTER AND SHE HERSELF IS A HIGH QUALITY COW. SHE WILL SELL WITH PAPERS AND NEVER NEEDS TO RECEIVE AN EMBRYO AGAIN. LOT 38 RECIP IS A STRONG COMING 3-YEAR-OLD PAPERED FEMALE THAT HAS UNANIMOUS & NET WORTH AND DID A GREAT JOB ON HER FIRST CALF. 2 VERY STRONG COWS HERE THAT BOTH SELL WITH PAPERS.

\$4,900

BELVIN ANGUS



1121
EXAR TRAVELER

WE LOVE THE 1121 DONOR & COMBINED WITH ATLANTIS WILL BE AMONG THE MOST EXCITING MATINGS IN THE SALE

1121 IS A BEAST OF A PRODUCTION FEMALE THAT ALWAYS CRANKS THEM OUT AND SHE IS A CROWD FAVORITE FOR ALL THAT HAVE EVER LAID EYES ON HER. SHE IS THE TYPICAL BISMARCK FEMALE THAT HAS AN AWESOME PHENOTYPE WITH A STRONG UDDER AND THE KIND YOU WANT A PASTURE FULL OF. DEFINITELY ONE OF OUR FAVORITE UP AND COMING DONORS WITH EXTRA MUSCLE SHAPE AND EXTREMELY EASY FLESHING. SHE HAS BEEN PRODUCTIVE AND RAISED A HIGH SELLING SON AT \$11,000 FOR ANCHORAGE IN 2020 WITH ANOTHER SON TOPPING THE SALE AGAIN IN 2021. THE MATING TO ATLANTIS WILL GIVE YOU MARKETABILITY AS HIS SEMEN HAS BEEN OFF THE MARKET AND VERY DIFFICULT TO FIND. HIS CALF REPORTS ARE AWESOME FROM VISITING WITH MY FRIENDS IN MONTANA AND CAN'T WAIT TO SEE HIS CALVES BORN NORTH OF THE BORDER. HIS MATING TO 1121 WILL DEFINITELY CLICK AND ROI WILL BE PROLIFIC.

39

EXAR TRAVELER 1121 X SQUARE B ATLANTIS 8060

RECIP: 28 DUE TO CALVE JANUARY 16, 2022

S A V RAINFALL 6846 | S A V BISMARCK 5682
SQUARE B ATLANTIS 8060 | **EXAR TRAVELER 1121**
ELBANNA OF CONANGA 1209 | WCR MISS TRAVELER K225

LOT 39 RECIP: THIS 2020 BORN FEMALE CAME FROM THE LEAD COMMERCIAL PEN AT THE ANDERSON BULL SALE AND IS NICELY MADE.



SQUARE B ATLANTIS 8060



\$11,000 SON OF EXAR TRAVELER 1121

OUT OF SALE



LINZ LADY BLASTER 9202

AWESOME EPD BACKED BY A STRONG DONOR & MATED WITH THE MOST EXCITING NEW BULL IN THE BREED

9202 HAS A STACKED PEDIGREE AND IS BACKED BY OUTSTANDING EPD'S LANDING HER IN THE TOP 1% FOR WW, YW, CW, HPG, MILK; THE TOP 10% OR BETTER FOR ANGLE, MARBLING, REA, MH, MW, CBI; AND VERY GOOD ACROSS THE BOARD FOR A POWERFUL PEDIGREE WITH CARCASS VALUE REPRESENTED. 9202 DID A GREAT JOB ON HER FIRST CALF AND WE FLUSHED HER SUCCESSFULLY THIS SUMMER TO LEADING BULLS IN THE INDUSTRY FOR NUMBER PROFILES AND PHENOTYPE. WE DID 9202 TO THE HUGE SPREAD BULL, CRAWFORD GUARANTEE THAT HAS EXTRA STYLE, PRESENCE AND AN EPD PROFILE THAT IS INCREDIBLY UNIQUE. IT IS HARD TO COMBINE EPD'S, PEDIGREE AND PHENOTYPE BUT 9202 DOES IT WELL AND GUARANTEE WILL ADD TO THE EXCITEMENT.

LOT 40

LINZ LADY BLASTER 453-9202 X CRAWFORD GUARANTEE 913

RECIP: AND 61 DUE TO CALVE FEBRUARY 26, 2022

CONNEALY PAYRAISE
CRAWFORD GUARANTEE 9137
CRAWFORD MS ARMORY D40

BRUNS BLASTER
LINZ LADY BLASTER 453-9202
RB LADY DENVER I67-453

PROJECTED EPD'S FOR RESULTING CALF

**CE 5.0 BW 2.1 WW 89 YW 162 SC 0.62 DOC 26 MCE 8 MILK 32
CLAW 0.53 ANGLE 0.45 CW 77 MARB 0.7 REA 0.72 FAT 0.035**

LOT 40 RECIPS: ANOTHER STRONG YOUNG COMING THREE-YEAR-OLD BLACK COMMERCIAL FEMALE. WE ARE VERY HAPPY WITH THESE YOUNG RECIPS.



CRAWFORD GUARANTEE 9137



ANCHORAGE LADY BLASTER 0444, DAUGHTER

OUT OF SALE



CLARKS KS GO GO GIRL

BEAUTIFUL UDDER, STRONG FOOTED, GREAT DESIGNED LIMO DONOR MATED FOR PROFITABILITY WITH STETSON
AWESOME EPD'S ON BOTH SIDES OF THE RESULTING CALF PLUS 2 ABSOLUTELY AWESOME PHENOTYPE INDIVIDUALS THAT ARE BACKED BY STACKED PEDIGREES. WE HAVE BEEN INVESTING IN THE BEST LIMOUSIN DONORS OUT THERE AND WE LOOK FORWARD TO ADDING MORE IN THE FUTURE. WE LOOK FORWARD TO SEEING THE SUCCESS THAT GO GO GIRL HAS IN THE NEAR FUTURE. HER PICTURE SPEAKS VOLUMES AND SHE IS BACKED BY NUMBERS THAT LAND HER IN THE TOP 35% OF THE BREED FOR 14 OF THE 15 EPD'S, A TRUE CURVE BENDER. B BAR STETSON WAS A \$19,000 SALE FEATURE AND HE HIMSELF IS IN THE TOP 45% OF 11 OF THE 15 EPD'S, ANOTHER CURVE BENDER. WE THINK THIS IS AN EXCITING MATING AND YOU CAN INVEST WITH CONFIDENCE.

41
LOT

CLARKS KS GO GO GIRL X B BAR STETSON 35H

RECIP: TRANSOVA 796 DUE TO CALVE FEBRUARY 5, 2022

RPY PAYNES CRACKER 17E NEWLIFE EASTON
B-BAR STETSON 35H **CLARKS KS GO GO GIRL**
B BAR KARISMA 57E CLARKS EMBRACE

LOT 41 RECIP: A RED COMMERCIAL RECIP COW THAT CAME UP FROM TRANSOVA IN SOUTH DAKOTA AND RAISED A HEAVY CALF LAST FALL. NOTE, SHE IS AN OUTSIDER COW THAT NEEDS SOME ROOM BUT HAS DONE A GREAT JOB WITH HER PRODUCTION THUS FAR.



B BAR STETSON 35H

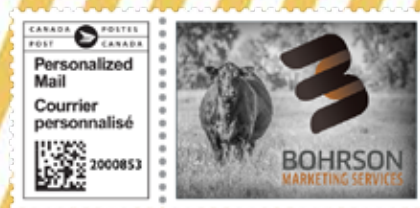


KARISMA 57E, DAM OF STETSON



BOHRSON
MARKETING SERVICES

RR4 SITE 7 BOX 28 | OLDS, AB T4H 1T8



RETURN POSTAGE GUARANTEED
PORT DE RETOUR GARANTI

Canadian Donors
**PREGNANT
RECIPIENT**
ONLINE SALE

**WEDNESDAY
DEC. 15
2021**