

RIVER POINT

CATTLE COMPANY *and* GUESTS

PRESENT...



Sunday
OCTOBER
16th 2022
1:00PM

RIVER POINT CATTLE COMPANY & GUESTS

PRESENT THE

fall
gala
sale

HEIFER CALVES,
BRED FEMALES,
& EMBRYOS!

IN
GLENCOE
ONTARIO, CANADA
22950 TAIT'S ROAD
SUNDAY **OCTOBER 16TH**
2022: 1 PM

NOTE:
SOME GPS USES SOUTHWEST MIDDLESEX
INSTEAD OF GLENCOE

SCHEDULE OF EVENTS:

Saturday,
OCTOBER 15TH:

1 PM TO DUSK: FALL GALA CATTLE VIEWING AT RPCC

Sunday,
OCTOBER 16TH:

10:30 AM: CATTLE ON DISPLAY
1 PM: RPCC & GUESTS FALL GALA SALE

ACCOMODATIONS IN THE AREA:

- | | |
|-----------------------------------|--------------|
| • STRATHROY MOTOR INN, STRATHROY | 519-245-4480 |
| • CLOCK TOWER INN, STRATHROY | 519-245-5656 |
| • HOMEWOOD SUITES, LONDON | 519-686-7700 |
| • COURTYARD MARRIOTT, LONDON | 519-680-0077 |
| • FOUR POINTS BY SHERATON, LONDON | 519-681-0600 |
| • DAYS INN, LONDON | 519-681-1240 |
| • QUALITY SUITES, LONDON | 519-680-1024 |

Can't make it to the sale?
Internet Bidding Available.

To view this sale visit www.dlms.ca, Fill out the registration form located under registration and sign-up for your free user account and select a username and password.

BIDDERS - To be approved as a bidder, Log in to dlms.ca and click BUYER APPROVAL tab, select the sale you are interested in bidding at and click sign up.

For more information
Call DLMS Reps:
Mark Shologan - 780-699-5082 or
DLMS Purebred Team 780.991-3025

DLMS
www.dlms.ca

Welcome from the **BOHRSON MARKETING TEAM,**

It is our pleasure to welcome you to Glencoe, Ontario to the beautiful yard at River Point Cattle Company for the 6th annual Fall Gala sale. Reed & Jane and family along with their loyal guest consignors consistently dig deep into their programs to offer up the best their operations have to give. We strongly believe as you sort through the catalogue, you will agree its one of the deepest qualities this great group of folks have come to assemble.

There is truly something for everyone on October 16th. Fancy show heifers that will be competitive in a show ring setting but will ultimately make a cow, tanky bred heifers carrying exciting and profitable services, a proven cow with a lifetime of production ahead of her and breed leading embryos sired by some of the hottest bulls in the industry. No matter what you may be in the market for, the options will be endless. As you study the pedigree's to the sale offering, you will notice many of the dams are past fall gala graduates now working for their new homes annually putting top end cattle back into the sale group. We believe this is a true testament to not only the stock on offer, but the consignors as they truly only offer their best to the Fall Gala.

We really hope you can plan to join us October 16th at River Point Cattle Company headquarters for the 6th annual Fall Gala sale. The people backing this exceptional offering are the type of folks you would choose to do business with. We annually look forward to this sale weekend as the cattle are great and the consignors backing them are even better. If for whatever reason you find yourself tied up or unable to attend the sale, we recommend you reach out to Reed & Jane, the consignors, or any of us at BMS as we would be glad to be your eyes and represent your needs in a professional, confidential manner. Hope to see you in Glencoe!

The Bohrson Marketing Team



SALES STAFF:

SCOTT BOHRSON	403-370-3010
TAYLOR RICHARDS	306-821-4169
ROB VOICE	306-270-6082
JAXON PAYNE	306-830-0456

AUCTIONEER:

DAN SKEELS	403-783-1217
------------	--------------

OTHER SALE CONTACTS

JAMIE O'SHEA	519-477-1238
REX CRAWFORD	519-940-1748
GORDON CRAWFORD	519-870-2396
REEGAN SAWYER	226-378-0086

INSURANCE:

STOCKMENS INSURANCE	
CASSIE DORRAN	403-507-5953

TRUCKING:

H.S. KNILL CO. LTD.	1-877-442-3106
OR	519-442-3106

UPDATES & VIDEOS

WATCH THE RPCC WEBSITE FOR SALE
UPDATES AND VIDEOS!

TERMS & CONDITIONS:

CATTLE WILL SELL UNDER THE
STANDARD TERMS AND CONDITIONS
FROM THE CANADIAN SIMMENTAL
ASSOCIATION AND BOHRSON
MARKETING SERVICES. THESE ARE
AVAILABLE UPON REQUEST.

Welcome from RPCC



Welcome to the 2022 edition of the Fall Gala! We are on our 6th Annual Fall Gala Sale. It is exciting to look back on the outstanding genetics that have sold in the past sales, these genetics have gone on to produce for the new owners which is one of the most rewarding parts of the seed stock business.

The line up for this year includes a strong set of front end heifer calves, great bred females carrying exciting pregnancies for next winter and spring, once again on offer is an elite package of embryos to round out this year's offering. We truly believe there is something for everyone on October 16th in Glencoe.

We continue to be blessed with a great group of consignors from across the province to work with and have added a couple new faces to the group this year. We are also very thankful for the tremendous bunch of family and friends that do a lot of work to make this sale a success every year.

We would love to see you October 16th, but if you are unable to attend we will do everything we can to ensure you are taken care of from a distance. DLMS will be broadcasting the sale online and the great team at Bohrsen Marketing will be available to help you evaluate the offering. The consignors will all be happy to show off their cattle at home prior to the sale as well.

Reed & Jane

RIVER POINT CATTLE COMPANY

Reed, Jane, Shelby & Josie Crawford

22950 Tait's Road, R.R. 4
Glencoe, Ontario Canada, N0L 1M0
riverpointcc@hotmail.com

Reed Cell: 519-857-7333

Jane Cell: 519-317-5263

Videos & Sale Catalogue:

www.riverpointcattlecompany.com



guest CONSIGNORS

2022

Clarke Family Farm Inc.

Daryl & Connie Clarke
Blenheim, ON
cdrainage@gmail.com
Daryl Cell: 519-359-1315
Hugh Ross Cell: 403-363-3539

Crawford Farms

John & Corey Crawford
Glencoe, ON
corey@crawfordfarms.ca
John Cell: 519-870-2198
Corey Cell: 519-614-1187

Christopher Farms

Jeff Christopher
Wainfleet, ON
rtusons2@gmail.com
Cell: 905-351-4563

Far-L Farms

Don & Cathy Farrell
Ripley, ON
doncathyfarrell@hurontel.on.ca
Home: 519-395-3346
Cell: 519-386-7775

Foley Simmentals

Dylan & Kaylynn Foley
Kinburn, ON
foleysimmentals@gmail.com
Cell: 613-913-9423

Outset Cattle Co.

Brian Robertson & Sara Beth Hopkins
Consecon, ON
outsetcattleco@gmail.com
Brian Cell: 519-373-6578
Sara Beth Cell: 613-848-8166

Pinch Hill Cattle Company

Chad Homer
Brandon Homer
Stittsville, ON
pinchhill@gmail.com
Brandon Cell: 613-978-0822
Chad Cell: 519-339-9659

Ridgeview Cattle Company

Blair Williamson
Lambton Shores, ON
ridgeviewshorthorns@hotmail.com
Cell: 519-808-0516

Stewart Livestock

Mike & Melissa Stewart
Newbury, ON
stewartlivestock.m@gmail.com
519-649-8581

Terrace Hill Farm

Wade Graham & Melissa Carruthers
Reegan Sawyer
Parkhill, ON
wadesg535@gmail.com
Wade Cell: 519-868-2087
Reegan Cell: 226-378-0086

Watson Cattle Co.

Bobby & Julie Watson
Appin, ON
bjwatsoncc@gmail.com
519-614-2752

Wiser Heights Stock Farms

Brad, Val, Colin & Molly Arnold
Thorndale, ON
wiserheights@gmail.com
Brad Cell: 226-376-5482

Xcel Livestock

Kevin, Tracy & Morgan MacIntyre
Russell, ON
xcellivestock@gmail.com
Kevin Cell: 613-223-6826
Tracy Cell: 613-850-6684
Morgan Cell: 613-720-6684



LOT: 1

1

RPCG CFFI XCEL KISMET 264K

#1401071 | FEB 16, 2022 | JANE 264K | **SIMMENTAL** | POLLED

HEIFER CALF

Act BW	Adj WW	Adj YW	BW	WW	YW	MLK	CE	MCE
89	793	N/A	2.7	82.8	128.1	19.5	8.6	2.5

REMINGTON LOCK N LOAD 54U
TJSC BOONE PICKENS 46C
 TJSC KNOCKOUT 121Y

LFE THE DARK NIGHT 350U
LFE BS SHEILA 82A
 LFE BS SHEILA 136T

REMINGTON ON TARGET 2S
 BAR 15 MISS KNIGHT78E-51G
 TJSC OPTIMUS PRIME 12W
 MISS KNOCKOUT 74T

R PLUS BLACKEDGE
 LFE BS MS LEWIS 646R
 LFE MR LEWIS 462P
 LFE SHEILA 110K

Lot 1 is the natural calf of the iconic LFE BS Sheila 82A herself and the proven astounding Boone Pickens bull! Kismet is just a mid February calf but she possesses body mass, thickness, great hair coat, and sound structure. She has a proven, powerhouse pedigree with full sibs topping sales and shows across the nation. Pictured below are just two full sibs that you can expect from these genes. Kismet has a very bright future, check her out sale day!



TJSC Boone Pickens 46C
sire



LFE BS Sheila 82A
dam



Mader Son of Anarchy 144H
full sibling



KJP Miss Rusylvia Sheila 21H
full sibling

Consigned by:

**RIVER POINT CATTLE CO.,
 CLARKE FAMILY FARM INC &
 XCEL LIVESTOCK**

6

FALL GALA SALE

Consigned by:

RIVER POINT CATTLE CO.



GEFF County O
sire of lots 2 & 3



RPCC Red High Light 207H
full sibling



LOT: 2

2

RPCC BLK KARMA 206K

#1394613 | JAN 5, 2022 | JANE 206K | SIMMENTAL | POLLED

HEIFER CALF

Act BW	Adj WW	Adj YW	BW 2	WW	YW	MLK	CE	MCE
76	691	N/A		75.3	111.1	22.4	7.6	4.2

W/C LOADED UP 1119Y
GEFF COUNTY O
RUBY NFF RHYTHM 475B

MR HOC BROKER
RPCC RED FRILLY 217F
RPCC RED XTREME 228X

REMINGTON LOCK N LOAD 54U
AUBREYS BLACK BLAZE III
AJE/PB MONTECITO 63W
RHYTHM 418P

SVF STEEL FORCE S701
JM BF H25
WHF SLUGGER 244S
RPCC RED MARYJANE 207S

This girl has been special since day one! She may not be the biggest but she is made right; square hipped, long made, sound and feminine. Her Broker dam descends from a long line of donor quality cows. While her sire, County O, is making cattle that have that extra style and pop that attract the eye of most. Most will remember the red baldy heifer we campaigned last year..... High Light is full sister to Karma, so we know this mating works!

3

RPCC BLK KRYSTAL 234K

#1394620 | JAN 23, 2022 | JANE 234K | SIMMENTAL | POLLED

HEIFER CALF

Act BW	Adj WW	Adj YW	BW	WW	YW	MLK	CE	MCE
97	739	N/A	4.7	81.2	119.4	20.4	4.5	3.9

W/C LOADED UP 1119Y
GEFF COUNTY O
RUBY NFF RHYTHM 475B

NCB COBRA 47Y
RVCC BLK EMERALD 13E
RPCC BLK BLING 214B

REMINGTON LOCK N LOAD 54U
AUBREYS BLACK BLAZE III
AJE/PB MONTECITO 63W
RHYTHM 418P

LFE VIPER 455U
NCB MISS DREAM 22T
MR HOC BROKER
RPCC RED YOURS TRULY 231Y

This black baldy powerhouse will catch your attention! She is hairy, extra long bodied, stout and cool. Her dam is a broody Cobra cow that goes back to some of our best bloodlines. Sired by County O brings different genetics to the table that are hot for the market. If you need to add a little sparkle to your herd, Krystal is your girl.



LOT: 3

Consigned by:

RIVER POINT CATTLE CO.



RPCC Blk Bling 214B
grand dam



NCB Cobra 47Y
maternal grand sire

FALL GALA SALE

7

ZANITA 224Z X BROKER FLUSH MATES : LOTS 4A & B



RPCC Red Geronimo 201G
full sibling



RPCC Red Delicious 243D
full sibling



LOT: 4A

4a

RPCC BLK KUTIE ET 266K

#1394509 | FEB 21, 2022 | JANE 266K | SIMMENTAL | POLLED

HEIFER CALF

Act BW	Adj WW	Adj YW	BW	WW	YW	MLK	CE	MCE
82	842	N/A	4.4	71.7	102.8	24	6.2	3.9

SVF STEEL FORCE S701
MR HOC BROKER
JM BF H25

KS BRAVADO P68
RPCC RED ZANITA 224Z
RPCC RED XTACY 225X

CNS DREAM ON L186
SVF SHEZA BEAUTY L901
G&L BLACKFOOT 716D
YC MISS BIK B80

FR REZULT
RIV RED BRIGADIA 969J
WHF SLUGGER 244S
RPCC LADY TRINITY 215T

4b

RPCC BLK KAMILA ET 268K

#1394514 | FEB 25, 2022 | JANE 268K | SIMMENTAL | POLLED

HEIFER CALF

Act BW	Adj WW	Adj YW	BW	WW	YW	MLK	CE	MCE
89	851	N/A	3.7	71.8	109.7	24	4.7	3

SVF STEEL FORCE S701
MR HOC BROKER
JM BF H25

KS BRAVADO P68
RPCC RED ZANITA 224Z
RPCC RED XTACY 225X

CNS DREAM ON L186
SVF SHEZA BEAUTY L901
G&L BLACKFOOT 716D
YC MISS BIK B80

FR REZULT
RIV RED BRIGADIA 969J
WHF SLUGGER 244S
RPCC LADY TRINITY 215T

The only reason we are letting these flushmates go is because we have embryos left in the tank. If you are needing to add flat out good momma cows to your herd these will be sure to work. We bred our Zanita cow to Broker naturally many times and it worked every time bringing home multiple banners and sale toppers year after year so it wasn't hard to choose her when we flushed last spring. Broker still dominates across North America. Here is your chance to get some our favorite breeding pieces to date. Added feature, both Kutie and Kamila tested Homo Polled!



LOT: 4B

Consigned by:

RIVER POINT CATTLE CO.



RPCC BIK Clara 218C
full sibling



RPCC Red Emily 239E
full sibling

8

FALL GALA SALE

Consigned by:

RIVER POINT CATTLE CO.



RF Capacity 742E
sire



GSC GCCO Dew North 102C
service sire



LOT: 5

5

RPCC BLK JAZZ DANGER 238J

#1383780 | FEB 1, 2021 | JANE 238J | **SIMMENTAL** | POLLED

BRED HEIFER

Act BW	Adj WW	Adj YW	BW	WW	YW	MLK	CE	MCE
85	657	1041	4.5	80.8	116.9	22.2	5.8	3.8

WFL WESTCOTT 24C
RF CAPACITY 742E
RF FAMOUS 409B

MR HOC BROKER
RPCC RED BALLERINA 241B
WAYDAMAR BLACK SABRINA 38S

TNT 90 PROOF Z401
WFL SWEET LICIOUS 1044X
SVS CAPTAIN MORGAN 11Z
RF FAMOUS 127Y

SVF STEEL FORCE S701
JM BF H25
JAMAR MIDNIGHT EXPRESS22M
WAYDAMAR MARYLOU 68M

When this brood cow momma strutted into the picture pen, Reed and I both looked at each other and said "why are we selling this one?". Well our loss is your gain! Her dam is a gorgeous red baldy Broker cow and does a bang up job. Sired by Capacity just brought her to the next level. Bred early to Dew North will give you fresh genetics that will be sure to impress.

Bred March 28, 2022 to GSC GCCO Dew North 102C. Preg checked safe.

6

RPCC BLK JODEE 224J

#1383768 | JAN 20, 2021 | JANE 224J | **SIMMENTAL** | POLLED

BRED HEIFER

Act BW	Adj WW	Adj YW	BW	WW	YW	MLK	CE	MCE
65	700	1116	1.8	87.6	140.1	34	9.9	4.8

WBF SIGNIFICANT B132
RUBYS TURNPIKE 771E
RUBYS MISS CLEO 240Z

HOOK'S BROADWAY 11B
BROOKSLAND DEE 242F
RPCC BLK DEE DEE 242D

GW-WBF SUBSTANCE 820Y
WBF HEBE X376
OVAL F RINGLEADER R579
RUBYS MISS CLEO 964W

MCM TOP GRADE 018X
HOOK'S WATER LILY 89W
W/C WIDE TRACK 694Y
CMS TAYLOR 830U

We had this girl pegged as a Feature Lot since last fall. The Turnpike progeny has really worked out well across North America. Her easy doing, well uddered dam stems from a cow family we bought many years ago out west from Czech-Mate, these genetics have topped the scales yearly while still possessing that look. Jodee is extremely long bodied, docile, put together in a total package. Bred to County O for a January calf that should be a great genetic breeding tool in any herd.

Bred April 1, 2022 to GEFF County O. Preg checked safe.



LOT: 6

Consigned by:

RIVER POINT CATTLE CO.



Rubys Turnpike 771E
sire



GEFF County O
service sire

FALL GALA SALE

9

Consigned by:

RIVER POINT CATTLE CO.



W/C Loaded Up 1119Y
sire



W/C Night Watch 84E
service sire



LOT: 7

F

RPCC BLK JOY RIDE 268J

#1383815 | FEB 18, 2021 | JANE 268J | SIMMENTAL | POLLED

BRED HEIFER

Act BW	Adj WW	Adj YW	BW	WW	YW	MLK	CE	MCE
80	569	919	2.2	74.4	108.2	21	11.6	7.2

REMINGTON LOCK N LOAD 54U
W/C LOADED UP 1119Y
AUBREYS BLACK BLAZE III

CCR COWBOY CUT 5048Z
IRONHILL FOREVER JOY
PLL EBONY'S JOY 2D

REMINGTON ON TARGET 2S
BAR 15 MISS KNIGHT78E-51G
3C MACHO M450 BZ
BLAZE IV 1P

TRIPLE C SINGLETARY S3H
CCR MS 4045 TIME 7322T
WHEATLAND TERMINATOR 202Z
JF EBONY'S JOY 454B

This bred heifer is sure to impress. She is goosey necked, thick made, moderate, all wrapped up in a pretty black baldy package. Sired by W/C Loaded Up 1119Y gives you the extra flash and style while getting the maternal, stand true genetics from her Cowboy Cut perfect uddered dam. She has a full brother working for the Duenk family. This girl was saved to be a feature bred heifer and you will see why on sale day. Bred to the calving ease bull Night Watch for a January baby.

Bred April 4, 2022 to W/C Night Watch 84E. Preg checked safe.

8

RPCC BLK JETTA 249J

#1384213 | FEB 4, 2021 | JANE 249J | SIMMENTAL | POLLED

BRED HEIFER

Act BW	Adj WW	Adj YW	BW	WW	YW	MLK	CE	MCE
65	623	964	-1.2	57.6	83	17.3	15.1	9.7

CNS DREAM ON L186
WHF SLUGGER 244S
WHF BLACK JASMINE 240J

WINC LIVE AMMO 420B
RPCC BLK GIA 246G
MUIRHEADS BEEBA 5Z

NICHOLS LEGACY G151
CNS SHEEZA DREAM K107W
WHF DESPERADO 212G
ER MISS REDLINE 40B

REMINGTON LOCK N LOAD 54U
RCFS SWEET TREAT
MUIRHEAD'S KOSMO 27N
MUIRHEADS BEEBA 21X

Every once in a while we still use our old Slugger bull that we bought in Kentucky as his daughters are still favourites in our herd. Not often do we sell one, so here is your chance to grab these genetics. Her dam is a solid made cow with an ideal udder that goes back to the Beeba cow we bought from Muirheads. Jetta is bred to our newest herd sire, he has a fresh pedigree that will add calving ease, and extra style.

Bred May 2, 2022 to K-Ler Basis 048J. Preg checked safe.



LOT: 8

Consigned by:

RIVER POINT CATTLE CO.



WHL Slugger 244s
sire



K-Ler Basis 048J
service sire

10

FALL GALA SALE

9

RPCC BLK KOUNTESS 218K

#1394616 | JAN 12, 2022 | JANE 218K | **SIMMENTAL** | POLLED

HEIFER CALF

Act BW	Adj WW	Adj YW	BW	WW	YW	MLK	CE	MCE
94	715	N/A	4.6	80.5	115.1	17.1	6	2.6

WS PILGRIM H182U
PROFIT
 WAGR PANARAMA 204Z
 MR TR HAMMER 308A ET
LPP BS LADY 11G
 LPP SWEET HEART 4X

CNS DREAM ON L186
 WS MARLA 276M
 MR HOC BROKER
 MELODY M668 BZ
 MR NLC UPGRADE U8676
 SVF/HS EXPECTING A DREAM
 HOOKS SHEAR FORCE 38K
 IPU-3D MISS RED NOREMAC

This clean made, pretty daughter of the Profit bull is also stout in her hip with an elegant blending of femininity and the right amount of mass and power. Kountess is out of a black baldy cow straight from the heart of the Lobster Point herd in the Maritimes. Look here for a pretty neat pedigreed female.

Consigned by: RIVER POINT CATTLE CO.



LOT: 9



LPP BS Lady 11G dam

10

RPCC BLK KRICKET 229K

#1394618 | JAN 22, 2022 | JANE 229K | **SIMMENTAL** | POLLED

HEIFER CALF

Act BW	Adj WW	Adj YW	BW	WW	YW	MLK	CE	MCE
82	752	N/A	3.1	71.6	103.2	17.5	7.2	4

W/C LOADED UP 1119Y
GEFF COUNTY O
 RUBY NFF RHYTHM 475B
 SVF STEEL FORCE S701
RPCC RED GALA 210G
 RPCC RED YOURS TRULY 231Y

REMINGTON LOCK N LOAD 54U
 AUBREYS BLACK BLAZE III
 AJE/PB MONTECITO 63W
 RHYTHM 418P
 CNS DREAM ON L186
 SVF SHEZA BEAUTY L901
 WHF SLUGGER 244S
 RPCC LADY IN RED 205N

Astounding combo of style and power! Out of a harding working, young Steel Force cow with some of our best matrons behind her. Sired by the ever so popular County O bull. Cricket is smooth structured, has enough body and style to truly stand out. If the extra chrome doesn't bother you..... check this female on sale day.

Consigned by: RIVER POINT CATTLE CO.



LOT: 10



SVF Steel Force S701 maternal grand sire

11

RPCC BLK KENNEDY 245K

#1394621 | FEB 2, 2022 | JANE 245K | **SIMMENTAL** | POLLED

HEIFER CALF

Act BW	Adj WW	Adj YW	BW	WW	YW	MLK	CE	MCE
73	778	N/A	1.3	81.9	118.1	23.9	10.2	6.1

NCB COBRA 47Y
NGDB STRUCTURE 34D
 NGDB LOUISE 411 B
 WS STEPPING STONE B44
FARL MS FLAGSTONE
 RPCC RED DRAGON FLY 205D

LFE VIPER 455U
 NCB MISS DREAM 22T
 DRAKE POKER FACE 2X
 NGDB 204Z
 W/C LOCK DOWN 206Z
 WS MS UPGRADE Z15
 GWS EBONY'S TRADEMARK 6N
 RPCC RED BUTTERSCOTCH

This black, soggy, deep bellied, free moving, voluminous, powerhouse, clean fronted, are just a few words that describe Kennedy. That's what these Structure offspring are all about! Her black baldy dam came from the great Far-L herd, and we had a lot of fun campaigning her as a bred heifer.

Consigned by: RIVER POINT CATTLE CO.



LOT: 11



NGDB Structure 34D sire

FALL GALA SALE

11

12

BROOKSLAND JENNY 206J

#1359743 | APRIL 5, 2021 | BLF 206J | SIMMENTAL | POLLED

BRED HEIFER

Act BW	Adj WW	Adj YW	BW	WW	YW	MLK	CE	MCE
76	N/A	N/A	1.5	75.8	106.8	17.6	11.9	7.2

W/C BANKROLL 811D

DOUBLE BAR D BANKROLL 804F

WLE CRUISIN SUSAN T26

W/C LOADED UP 1119Y

MISS WERNING KP 8543U

CNS DREAM ON L186

MISS CHLOE RF26K

WINC LIVE AMMO 420B

RPCC BVF BLK FIESTA 206F

RPCC BLK CONFETTI 232C

REMINGTON LOCK N LOAD 54U

RCFS SWEET TREAT

MR HOC BROKER

RPCC BLK TRIXIE 205T

This April black baldy beauty sure has really excelled over the winter & spring. Jenny backs on to some hardworking, very dependable cows, going way back to the first ever black Simmental I bought. Her sire was a high selling, feature Bankroll son from the famous Double Bar D herd in SK. Bred to the super cool Double Up bull that Canadian Sires brought up from the USA.

Bred April 29, 2022 to WHF/JS/CCS Double Up G365. Preg checked safe.

Consigned by: RIVER POINT CATTLE CO



LOT: 12



WHF/JS/CCS Double Up G365
service sire

13

BROOKSLAND JANE 204J

#1359742 | FEB 11, 2021 | BLF 204J | SIMMENTAL | POLLED

BRED HEIFER

Act BW	Adj WW	Adj YW	BW	WW	YW	MLK	CE	MCE
72	551	N/A	1.3	69.1	95.3	21.6	12.6	8

W/C BANKROLL 811D

DOUBLE BAR D BANKROLL 804F

WLE CRUISIN SUSAN T26

W/C LOADED UP 1119Y

MISS WERNING KP 8543U

CNS DREAM ON L186

MISS CHLOE RF26K

HARKERS ICON

RPCC BLK EVA 204E

RPCC RED COVERGIRL 241C

HSF BETTER THAN EVER

WS KATIE S125

WHF SLUGGER 244S

RPCC LADY IN RED 205N

Lot 13 is a soft made, nicely made black baldy female. Her dam caught the eye of many as we campaigned her as a calf, then she matured into a beautiful cow for the Brooks family. Sired by a powerful Bankroll son that adds power and dimension to his offspring. Check out Lot 12 as she is a half sister. Bred to the calving ease black bull, Night Watch from the great Werning Cattle Co.

Bred May 6, 2022 to W/C Night Watch 84E. Preg checked safe.

Consigned by: RIVER POINT CATTLE CO



LOT: 13



Double Bar D Bankroll 804F
sire of lots 12 & 13

14

MAPLE STONE JUST FANCY 13J

#1362326 | FEB 25, 2021 | MSF 13J | SIMMENTAL | POLLED

BRED HEIFER

Act BW	Adj WW	Adj YW	BW 2	WW	YW	MLK	CE	MCE
79	N/A	N/A		70.7	103.5	22.8	10.5	6.3

W/C LOADED UP 1119Y

IRCC GUSTO 903G

IRCC EXQUISITE 724E

REMINGTON LOCK N LOAD 54U

AUBREYS BLACK BLAZE III

GSC ALL IN 72A

IRCC CHA CHA 520C

MR HOC BROKER

RPCC RED FANCY 218F

RPCC RED XTREME 228X

SVF STEEL FORCE S701

JM BF H25

WHF SLUGGER 244S

RPCC RED MARYJANE 207S

Lot 14 stems from a long line of "Fancy" gals! She is the total package, she is sound, feminine and has clean lines. Paternally, she is sired by a Loaded Up son that did great things for the Ridler family. Mated to Night Watch for a special breeding piece.

Bred April 21, 2022 to W/C Night Watch 84E. Preg checked safe.

Consigned by: RIVER POINT CATTLE CO



LOT: 14



RPCC Red Fancy 218F
dam

12

FALL GALA SALE

15

RPCC BLK KISSABLE LIPS ET 242K

#1394508 | FEB 1, 2022 | JANE 242K | **SIMMENTAL** | POLLED

HEIFER CALF

Act BW	Adj WW	Adj YW	BW	WW	YW	MLK	CE	MCE
85	821	N/A	3.9	84.6	131.9	20.9	10.6	5.3

RF CAPACITY 742E
RF SUPERCHARGED 9150G
 RF CERTAINLY FLIRTIN 202Z
 WFL WESTCOTT 24C
 RF FAMOUS 409B
 WHEATLAND STOUT 930W
 RF FLIRTIN FOR CERTIN 37U
 FBF1 COMBUSTIBLE
MADER LIPS LIKE SUGAR 27C
 MADER P IRON SUGAR 7X
 SVF STEEL FORCE S701
 LAZY H BURN BABY BURNR34
 MADER P BLACK IRONMAN 22U
 LFE FAMOUS 632T

Lot 15 is the result from one of the Mader Lips Like Sugar X RF Supercharged embryos we bought from the Mader family. Just a February calf, but wouldn't know by looking at her. She has performance, muscle, mass and pedigree! Genetics from some of the top herds in Western Canada. Lot 15 tested Homo Polled & Homo Black!

Consigned by: **RIVER POINT CATTLE CO**



LOT: 15



RF Supercharged 9150G
sire

16

RPCC BLK KEEP SAKE 233K

#1394619 | JAN 23, 2022 | JANE 233K | **SIMMENTAL** | POLLED

HEIFER CALF

Act BW	Adj WW	Adj YW	BW	WW	YW	MLK	CE	MCE
86	734	N/A	3.5	66.1	101.5	17.2	8.4	4.3

3D BLK FULL THROTTLE 483X
LFE COMMISSIONER 811Z
 LFE BS LASS 189X
 WHEATLAND BULL 680S
 CROSSROAD RAMONA 375R
 LFE THE DARK NIGHT 350U
 MARK'S MS SHOLOGAN 51R
 MR HOC BROKER
RPCC BLK DIXIE 245D
 RPCC RED YOURS TRULY 231Y
 SVF STEEL FORCE S701
 JM BF H25
 WHF SLUGGER 244S
 RPCC LADY IN RED 205N

Since the day this beauty was born she has been a favourite of ours and visitors! Keep Sake was meant for the keeper pen..... as you can tell by her name, but we wanted to share our best with you. Lot 16 is sired by LFE Commissioner who knocks it out of the park when making both males and females. Then to add to this girl is the best cow family we have behind her! Check out this performance packed, stand out on sale day.

Consigned by: **RIVER POINT CATTLE CO**



LOT: 16



RPCC Blk Dixie 245D
dam

17

RPCC BLK KISS & TELL 225K

#1394617 | JAN 21, 2022 | JANE 225K | **SIMMENTAL** | POLLED

HEIFER CALF

Act BW	Adj WW	Adj YW	BW	WW	YW	MLK	CE	MCE
97	866	N/A	5.6	86.6	137	26.8	6.6	5.1

LFE CASH 386D
LFE GAME FACE 338F
 LFE BS AMBER 60D
 LFE BOUNTY 3118Z
 LFE BS FIRSTBASE 39B
 NCB COBRA 47Y
 LFE BS AMBER 125B
 TNGL GRAND FORTUNE Z467
JHM MISS 70E
 MISS 55 C
 SS EBONYS GRANDMASTER
 AJE/HS/MBCC HOPE FLOATS
 WFL ABSOLUTE 51Y
 MAPLE KEY TUNE

Here is the weaning weight topper of the group! This massive bodied girl is thick, big butted, yet kitten quiet. Kiss & Tell has been a stand out since day one. Her dam is an easy doing, beautifully uddered cow that came from Jeff MacCrostie. While her sire is a black baldy breeding sensation from Lewis Farms. If you are needing to add extra doability and docility to your program Lot 17 is for you.

Consigned by: **RIVER POINT CATTLE CO**



LOT: 17



LFE Game Face 338F
sire

18

RPCC BLK JANELLE 245J#1383786 | FEB 2, 2021 | JANE 245J | **SIMMENTAL** | POLLED

BRED HEIFER

Act BW	Adj WW	Adj YW	BW	WW	YW	MLK	CE	MCE
87	655	1061	3.3	75.4	119.9	21.8	8.9	3.6

3D BLK FULL THROTTLE 483X

LFE COMMISSIONER 811Z

LFE BS LASS 189X

WHEATLAND BULL 680S

CROSSROAD RAMONA 375R

LFE THE DARK NIGHT 350U

MARK'S MS SHOLOGAN 51R

HOOKS SHEAR FORCE 38K

RPCC BLK CHERISH ET229C

RPCC BLK TIGER EYE 204T

NICHOLS LEGACY G151

C&D TRACY

KENCO/MF POWERLINE 204L

FLO-LAR RED RUBY 106M

Janelle is a performance type female! Sired by Commissioner gives you the genetics that wean off that big calf each fall. Her dam side is very maternal making this female a necessity in the industry. Bred for an early calf to Boone Pickens that will make this pedigree shine.

Bred April 4, 2022 to TJSC Boone Pickens 46C. Preg checked safe.*Consigned by:* RIVER POINT CATTLE CO

19

RPCC BLK JULIET 240J#1383782 | FEB 1, 2021 | JANE 240J | **SIMMENTAL** | POLLED

BRED HEIFER

Act BW	Adj WW	Adj YW	BW	WW	YW	MLK	CE	MCE
81	640	976	4.1	86.5	128.2	21.3	7.1	2.4

SVF STEEL FORCE S701

BOSS LAKE TITANIUM 726E

IPU 169P MS 5-STAR 148T

CNS DREAM ON L186

SVF SHEZA BEAUTY L901

TNT FIVE STAR P275

IPU RED POCAHONTAS 169P

CCR COWBOY CUT 5048Z

DYLN EQUALIZER 106E

RPCC BLK APPLE OF MY EYE

TRIPLE C SINGLETARY S3H

CCR MS 4045 TIME 7322T

LFE BS LEWIS 322U

RPCC BLK TIGER EYE 204T

Juliet is sired by our Titanium bull from Boss Lake. His first few calf crops impressed us enough that he gets turned out to the big pasture. Lot 19 is a nice made female, with never fail genes backing her up. Her dam is a very quiet, easy doing, great uddered Cowboy Cut daughter we bought from Foley Simmentals. We think the mating to Night Watch should give this calf that extra clout we all like.

Bred April 1, 2022 to W/C Night Watch 84E. Preg checked safe.*Consigned by:* RIVER POINT CATTLE CO

20

RPCC RED JESSA 265J#1383813 | FEB 16, 2021 | JANE 265J | **SIMMENTAL** | POLLED

BRED HEIFER

Act BW	Adj WW	Adj YW	BW	WW	YW	MLK	CE	MCE
85	667	1041	3.8	79	114.4	22.4	7.3	3.9

MRL MISSILE 138C

HFL ENDGAME 911G

JACKSON ROSE 23D

COME AS U R RED ROCKET

MRL MISS 2423Z

SVS CAPTAIN MORGAN 11Z

SPRINGCREEK LINNE 33R

RED TEX Y3189 HR

RPCC RED ANNA BELLE 229A

RPCC RED MARYJANE 207S

STF FIXATION W155

MS RED BARON HR T168

HRC RED PERFECTION 20P

RPCC RED ROSEMARY 201P

If you are looking for a red powerhouse bred heifer, look no further! Jessa has the broody, meaty look to go on and be a herdsire or front pasture female maker for her new owner. Lot 20's dam is one of our favourite cows in the herd, she's easy doing with a gorgeous udder. Get ready for an exciting red baby sired by the patriarch Slugger himself.

Bred May 6, 2022 to WHF Slugger 244S. Preg checked safe.*Consigned by:* RIVER POINT CATTLE CO

LOT: 18

TJSC Boone Pickens 46C
service sire

LOT: 19

Boss Lake Titanium 726E
sire

LOT: 20

WHF Slugger 244S
service sire

14

FALL GALA SALE

Consigned by:

RIVER POINT CATTLE CO.



IRCC NJM Ecstatic 718E
dam



GSC GCCO Dew North 102C
service sire



LOT: 21

21

RPCC BLK JUANITA 247J

#1383789 | FEB 3, 2021 | JANE 247J | **SIMMENTAL** | POLLED

BRED HEIFER

Act BW	Adj WW	Adj YW	BW	WW	YW	MLK	CE	MCE
78	659	1043	2	79	115.7	26.6	11.5	4.5

W/C BANKROLL 811D
IRCC DLC KING GEORGE 905G
IRCC DEBUTANTE 634D

WFL ABSOLUTE 51Y
IRCC NJM ECSTATIC 718E
IRCC BUBBLICIOUS 447B

W/C LOADED UP 1119Y
MISS WERNING KP 8543U
IRCC BOOMSHAKALAKA 434B
IRCC BOOTY CALL 449B

LFE STRAIT UP 454W
WFL MS BLACK FLASH 8068U
IRCC ZIPLINE 210Z
IRCC YOU'RE THE ONE 123Y

Juanita has momma cow written all over her. She is solid black, deep, sound and soggy with genetics behind her that are sure to impress. Lot 21's Absolute dam came from the IRCC & NJM herds, she stems back to their popular Bubblicious cow family. While her sire has the great Bankroll bull and Debbie cow behind him. Bred for an early Dew North calf that will make a new twist on a sure thing.

Bred March 26, 2022 to GSC GCCO Dew North 102C. Preg checked safe.



LOT: 22

22

RPCC RED JUST A DREAM 259J

#1355105 | FEB 11, 2021 | JANE 259J | **SIMMENTAL** | POLLED

BRED HEIFER

Act BW	Adj WW	Adj YW	BW	WW	YW	MLK	CE	MCE
89	684	1031	3.8	69	97.8	25.4	5.8	6

MR HOC BROKER
RF MERCHANT 481B
TLG FLIRTIN WITH YOU

SPRINGCREEK LOTTO 52Y
RPCC RED CHARM ET258C
RPCC RED TREASURE 212T

SVF STEEL FORCE S701
JM BF H25
KENCO/MF POWERLINE 204L
CHUB'S FLIRT 6P

KOP CROSBY 137W
SPRINGCREEK BLK TESS 25T
HRC RED PERFECTION 20P
RPCC PRETTY IN RED 206P

A proven, hardworking cow family that produces powerful females and males that do great in the show ring or front pasture. Lot 22's dam is an ET daughter of the past Royal Champ herself (Treasure). Being sired by RF Merchant brings the extra punch most desire. We bred a lot of our keeper heifers to Double Up, be ready for great things!

Bred March 25, 2022 to WHF/JS/CCS Double Up G365. Preg checked safe.

Consigned by:

RIVER POINT CATTLE CO.



RF Merchant 481B
sire



WHF/JS/CCS Double Up G365
service sire

FALL GALA SALE

15



IRCC DLC King George 905G
sire



IRCC Debutante 634D
grand dam



SSC Shell Shocked 44B
sire



K-Ler Basis 048J
service sire to Lots 23 & 24



SAC Conversation
sire



WHL Gold Key 1619D
service sire

23

RPCC RED JUJUBE 248J

#1383790 | FEB 3, 2021 | JANE 248J | **SIMMENTAL** | POLLED

BRED HEIFER

Act BW	Adj WW	Adj YW	BW	WW	YW	MLK	CE	MCE
81	610	960	3.2	79.8	113.6	23.8	9.2	4.8

W/C BANKROLL 811D
IRCC DLC KING GEORGE 905G
IRCC DEBUTANTE 634D

W/C LOADED UP 1119Y
MISS WERNING KP 8543U
IRCC BOOMSHAKALAKA 434B
IRCC BOOTY CALL 449B

IRCC ZIPLINE 210Z
IRCC CINNAMON 542C
INDIAN-RIVER MORGAN

CMS NICKLEBACK 922W
INDIAN RIVER ROMANCE
PCC NIGHT MOVES H10
INDIAN RIVER KORINA 6K

This girl will catch your eye sale day with her unique baldy face. She is a solid made female from a milky cow family that will work both in the purebred and commercial industries. Bred for a spring calf to our new Basis bull from Minnesota.

Exposed May 26 - October 1, 2022 to K-Ler Basis 048J. Preg checked August 21st and confirmed pregnant 30 days.

Consigned by: RIVER POINT CATTLE CO

24

RPCC BLK JUNGLE JANE 208J

#1383188 | JAN 3, 2021 | JANE 208J | **SIMMENTAL** | POLLED

BRED HEIFER

Act BW	Adj WW	Adj YW	BW	WW	YW	MLK	CE	MCE
82	547	893	1.6	61.1	91.9	20.7	10.8	4.3

REMINGTONSECRETWEAPON185X
SSC SHELL SHOCKED 44B
LAZY H SHEZ TOO COOL W58

GWS EBONY'S TRADEMARK 6N
AUBREYS BLACKBLAZE II 5T
CNS DREAM ON L186
SS/REW TOO COOL S365

CDI AUTHORITY 77X
RPCC RED JANE DOE 224D
RPCC RED MARYJANE 207S

NF TRUMP S582
CDI MS CROCKET 88T
HRC RED PERFECTION 20P
RPCC RED ROSEMARY 201P

A unique pedigree here! Sired by the flashy black baldy Shell Shocked bull blended nicely with the punch of the red performance packed pedigree on the dam's side. Due in February to the CDI Trustee son, K-Ler Basis.

Bred May 5, 2022 to K-Ler Basis 048J. Preg checked safe.

Consigned by: RIVER POINT CATTLE CO

25

CRAWFDOWN RPCC BLACK ALICE 15J

#AR29109 | FEB 2, 2021 | GAC 15J | **SHORTHORN PLUS** | POLLED

BRED HEIFER

Act BW	Adj WW	Adj YW	BW	WW	YW	MLK	CE	CEM
82	602	N/A	-0.2	48	80	25	8	4

SILVEIRAS CONVERSION 8064
SAC CONVERSATION
LAFLINS FARRAH 0250

BT CROSSOVER 758N
EXG SARAS DREAM S609 R3
S A V 004 PREDOMINANT 4438
LAFLINS FARRAH 7215

JSF BIG TICKET 131D
CRAWFDOWN ALICE 35G
CRAWFDOWN ALICE 28E

JDMC BIG SKY 15X
KL GOLD ROSE
CRAWFDOWN ACTUAL 19A
CRAWFDOWN ALICE 4B

Hybrid vigour at its best! Sired by the SAC Conversation angus bull that is well known and used all over North America. Lot 25's dam is a really nice red shorthorn 2 yr old with a great udder, she is raising another strong calf this year. Bred to Gold Key to add even more pizzazz to this beautiful female.

Bred May 1, 2022 to WHL Gold Key 1619D. Preg checked safe.

Consigned by: RIVER POINT CATTLE CO

26

CEDAR CREEK KEITHA

#1367074 | FEB 4, 2021 | MSL 17J | **SIMMENTAL** | POLLED

BRED HEIFER

Act BW	Adj WW	Adj YW	BW	WW	YW	MLK	CE	MCE
78	N/A	N/A	-2.1	65.7	96.2	22.8	17.1	8.8

HOOKS SHEAR FORCE 38K
WHL RED HEAT 1734E
 CMS SODA POP 422B

NICHOLS LEGACY G151
 C&D TRACY
 DRAKE POKER FACE 2X
 HPF CREAM SODA Y010

WFL ABSOLUTE 51Y
CEDAR CREEK WHITLEY
 RPCC BLK EMMYLOU HARRIS 214E

LFE STRAIT UP 454W
 WFL MS BLACK FLASH 8068U
 MR HOC BROKER
 CMS TAYLOR 830U

This cow family never disappoints. They are productive at raising sale worthy females, males or that big steer calf in the fall. Sired by WHL Red Heat just adds merit to this pedigree. Lot 26 is solid red and made right. Bred to never fail momma maker, Slugger, that will make this calf a true maternal breeding piece.

Bred April 21, 2022 to WHF Slugger 244S. Preg checked safe.

Consigned by: **RIVER POINT CATTLE CO**



LOT: 26



WHL Red Heat 1734E
sire

27

RPCC RED JUBILEE 211J

#1355101 | JAN 11, 2021 | JANE 211J | **SIMMENTAL** | SCURRED

BRED HEIFER

Act BW	Adj WW	Adj YW	BW	WW	YW	MLK	CE	MCE
70	641	892	2.1	63.9	79.6	21.2	10.7	4.2

WS PILGRIM H182U
CLLT ALLIANCE 91C
 BROOKS SHINIA 1A

CNS DREAM ON L186
 WS MARLA 276M
 BB BARACK 1017T
 BROOKS RED HOT Y17

SVF STEEL FORCE S701
RPCC RED GALA 210G
 RPCC RED YOURS TRULY 231Y

CNS DREAM ON L186
 SVF SHEZA BEAUTY L901
 WHF SLUGGER 244S
 RPCC LADY IN RED 205N

Jubilee is a real sweetheart! She is clean made, has nice muscle shape, an overall pleasantly made female. Alliance sires really maternally made daughters. While her 2 yr old dam's pedigree will add valuable genetics to anything. Bred to the new red K-Ler bull that will add a fresh take on this calf.

Bred April 16, 2022 to K-Ler Basis 048J. Preg checked safe.

Consigned by: **RIVER POINT CATTLE CO**



LOT: 27



CLLT Alliance 91C
sire

28

RPCC RED JINGLES 257J

#1383808 | FEB 5, 2021 | JANE 257J | **SIMMENTAL** | POLLED

BRED HEIFER

Act BW	Adj WW	Adj YW	BW	WW	YW	MLK	CE	MCE
92	520	856	4.5	71.9	108.2	19.2	4.6	2.8

MRL MISSILE 138C
HFL ENDGAME 911G
 JACKSON ROSE 23D

COME AS U R RED ROCKET
 MRL MISS 2423Z
 SVS CAPTAIN MORGAN 11Z
 SPRINGCREEK LINNE 33R

W/C BULLSEYE 770D
RPCC RED FOREVER LADY 256F
 RPCC LADY IN RED 205N

W/C BULLSEYE 3046A
 KS MISS SEQUOIA Y770
 LCHMN BODYBUILDER 7303F
 ARKACY GINA 13G

Jingles is a well built female. We think these Endgame daughters will be really good, honest hard working cows, whether you want to breed them to something flashy for the show ring, or something paternal for the pasture/feedlot. Bred to the Basis bull that will add a little panache to this March baby.

Bred June 26, 2022 to K-Ler Basis 048J. Preg checked safe.

Consigned by: **RIVER POINT CATTLE CO**



LOT: 28



HFL Endgame 911G
sire

29

RPCC BLK KALITA 202K#1394518 | JAN 1, 2022 | JANE 202K | **SIMMENTAL** | POLLED

HEIFER CALF

Act BW	Adj WW	Adj YW	BW	WW	YW	MLK	CE	MCE
87	684	N/A	2.6	82	120.8	22.5	10.8	6.7

TRIPLE C SINGLETARY 53H
CCR COWBOY CUT 5048Z
 CCR MS 4045 TIME 7322T

HOOKS SHEAR FORCE 38K
 LUCAS JOSIE 19K
 HTP SVF IN DEW TIME
 CCR MS PRETTY 4045P

JS SURE BET 4T
MUIRHEADS WYNONA 46A
 MUIRHEADS WYNONA 102Y

SVF/NJC MO TOWN M216
 JS BLACK MAGIC WOMAN 13P
 WESTFALL VOYAGER 721P
 BDS WYNONA 63W

Proven, Predictable genetics here! Cowboy Cut continues to make great females with that extra bit of style that Kalita carries. Her Sure Bet mother from Muirhead's in Saskatchewan has been a no-miss no-fuss kind of cow we wish we had more of! Her full sister is in the keeper pen - letting us share this sweetheart with you.



LOT: 29

RPCC Blk Elsa 234E
 maternal sibling



Consigned by: **REX CRAWFORD &
 JOSIE CRAWFORD**

30

CF RPCC BLK KESHIA 211K#1394614 | JAN 11, 2022 | JANE 211K | **SIMMENTAL** | POLLED

HEIFER CALF

Act BW	Adj WW	Adj YW	BW	WW	YW	MLK	CE	MCE
70	710	N/A	0.3	67.8	86.4	25.5	12.2	4.8

WS PILGRIM H182U
CCLT ALLIANCE 91C
 BROOKS SHINIA 1A

CNS DREAM ON L186
 WS MARLA 276M
 BB BARACK 1017T
 BROOKS RED HOT Y17

WHL GOLD KEY 1619D
CFFI HIGH CLASS 6H
 RPCC BLK FASHIONISTA 249F

HOOKS SHEAR FORCE 38K
 CMS SODA POP 417B
 W/C BULLSEYE 770D
 RPCC RED COVERGIRL 241C

This slick designed, long made, feminine heifer has a bright future. We love how the Alliance bull makes such maternal females. Her dam came out of this sale from the Clarke Family, and boy did she turn out to be a great two year old that held her shape and has an ideal udder. Keshia would make a nice junior project for next year.



LOT: 30

CFFI High Class 6H
 dam



Consigned by: **RIVER POINT CATTLE CO &
 CHRISTOPHER FARMS**

31

CF RPCC BLK KOWGIRL 253K#1394615 | FEB 8, 2022 | JANE 253K | **SIMMENTAL** | POLLED

HEIFER CALF

Act BW	Adj WW	Adj YW	BW	WW	YW	MLK	CE	MCE
78	718	N/A	4.2	90.5	132.9	27.1	4.7	4.1

NCB COBRA 47Y
NGDB STRUCTURE 34D
 NGDB LOUISE 411 B

LFE VIPER 455U
 NCB MISS DREAM 22T
 DRAKE POKER FACE 2X
 NGDB 204Z

HOOK'S BROADWAY 11B
RPCC BLK FIRE FLY 232F
 RPCC BLK ABLAZE 231A

MCM TOP GRADE 018X
 HOOK'S WATER LILY 89W
 LFE BS LEWIS 322U
 RPCC RED TREASURE 212T

Kowgirl is a deep ribbed, solid made, moderate female with that blaze everyone loves. This cow family is extremely easy doing with great udders. Mating the powerhouse Structure bull to this Broadway cow gives a unique blend of genetics. Lot 31 is just a February calf, don't pass her by.



LOT: 31

RPCC Blk Fire Fly 232F
 dam



Consigned by: **RIVER POINT CATTLE CO &
 CHRISTOPHER FARMS**

18

FALL GALA SALE

32

XCEL RPCC JELLYBEAN 410J#135525 | FEB 3, 2021 | XCEL 410J | **SIMMENTAL** | POLLED**BRED HEIFER**

Act BW	Adj WW	Adj YW	BW	WW	YW	MLK	CE	MCE
80	N/A	N/A	2.2	70.8	102	21.2	10.3	5.2

REMINGTON LOCK N LOAD 54U
W/C LOADED UP 1119Y
 AUBREYS BLACK BLAZE III

GWS EBONYS TRADEMARK 6N
XCEL RPCC KITKAT CANDY
 XCEL BLACK CANDY 401S

REMINGTON ON TARGET 2S
 BAR 15 MISS KNIGHT78E-51G
 3C MACHO M450 BZ
 BLAZE IV 1P

WLE POWER STROKE
 NJC EBONY ANTOINETTE
 PVF-CW RAPID FIRE 0195K
 XCEL EYE CANDY 401N

Great cows come from great cow families and this will be the last progeny of Kitkat to sell. We lost Kitkat in 2021 when Jellybean was just a couple months old. But even at that age, we knew she was special. When we evaluate her, her mobility combined with smooth design and fantastic look makes us really admire her for her future. Her maternal sister was the high selling bred in the 2019 Gala sale to LA Ranches in BC and have since entered their flush program. This one will be a good investment.

Bred March 25, 2022 to W/C Night Watch 84E. Preg checked safe.

Consigned by: **XCEL LIVESTOCK & RIVER POINT CATTLE CO**

33

XCEL GETTING REDDY TO HOLLER#PENDING | FEB 1, 2022 | XCEL 407J | **SIMMENTAL** | POLLED**BRED HEIFER**

Act BW	Adj WW	Adj YW	BW	WW	YW	MLK	CE	MCE
86	N/A	N/A	N/A	N/A	N/A	N/A	N/A	N/A

W/C LOADED UP 1119Y
GEFF COUNTY O
 RUBY NFF RHYTHM 475B

BGS/BM CAPTAIN SCREAM 63D
EHB GET REDDY TO SCREAM
 XCEL GETTING A LITTLE RED

REMINGTON LOCK N LOAD 54U
 AUBREYS BLACK BLAZE III
 AJE/PB MONTECITO 63W
 RHYTHM 418P

SVS CAPTAIN MORGAN 11Z
 RF SCREAM 215Z
 HOOKS SHEAR FORCE 38K
 XCEL GETTING REDDY 404Y

Holler is sound, big footed, stout and neat necked with a cool baldie face. She is backed by a unique combination of American and Canadian time tested bloodlines... County 0 x Captain Scream. Looks like she is going to drop a sweet udder for her January Night Watch calf.

Bred March 31, 2022 to W/C Night Watch 84E. Preg checked safe.

Consigned by: **XCEL LIVESTOCK**

34

XCEL KAHLUA 406K#1400524 | JAN 10, 2022 | XCEL 406K | **SIMMENTAL** | POLLED**HEIFER CALF**

Act BW	Adj WW	Adj YW	BW	WW	YW	MLK	CE	MCE
80	N/A	N/A	2.9	73.5	95.1	25.2	8.5	2.7

WS PILGRIM H182U
CCLT ALLIANCE 91C
 BROOKS SHINIA 1A

MR HOC BROKER
XCEL RPCC RED CHEERS 234C
 JF EBONYS JOY 1008Y

CNS DREAM ON L186
 WS MARLA 276M
 BB BARACK 1017T
 BROOKS RED HOT Y17

SVF STEEL FORCE S701
 JM BF H25
 STF DOMINANCE T171
 JF EBONYS JOY 612S

Here is an Alliance daughter that is flawless, long spined, voluminous and rocket fronted. She is really has it all with a cool baldie face. Whether in the showing or pasture, she is sure to stand out. Juniors don't miss out on this young lady with National YCSA Classic coming to Ontario next year. She is a dream on the halter.

Consigned by: **XCEL LIVESTOCK**



LOT: 32

XCEL RPCC Candy Crush sold to LA Ranches
 maternal sibling



LOT: 33



LOT: 34



LOT: 35



Calf Champion at 2019 Expo Boeuf & sold to Lacombe Cattle Co.
full sibling

35

XCEL PHCC EBONYS KISS & TELL

#PENDING | JAN 2, 2022 | XCEL 402K | SIMMENTAL | POLLED

HEIFER CALF	Act BW	Adj WW	Adj YW	BW	WW	YW	MLK	CE	MCE
	76	N/A	N/A	2.4	73.7	100.8	17.8	10.7	6.2

SVF STEEL FORCE S701
MR HOC BROKER
JM BF H25

CNS DREAM ON L186
SVF SHEZA BEAUTY L901
G&L BLACKFOOT 716D
YC MISS BIK B80

CNS DREAM ON L186
SS EBONYS DREAM LADY
SOSF EBONYS JOY L-123

NICHOLS LEGACY G151
CNS SHEEZA DREAM K107W
HC POWER DRIVE 88H
NJC/TJF JOY

The consistency of this mating is phenomenal. If you like them correct, deep sided, naturally thick and slender necked, come take a look. And, oh yes, she has great hair if you are looking for a show prospect for Nationals. Check back on social media for updated pictures, she wasn't feeling her best on picture day.

Consigned by: **XCEL LIVESTOCK & PINCH HILL CATTLE CO**



LOT: 36



DYLN Jade 101J
full sibling

36

DYLN JUNE 105J

#1398458 | JAN 13, 2021 | DYLN 105J | SIMMENTAL | POLLED

BRED HEIFER	Act BW	Adj WW	Adj YW	BW	WW	YW	MLK	CE	MCE
	93	N/A	N/A	5.2	94.8	141.8	18	4.3	-0.3

WFL WESTCOTT 24C
RUST RIO GRANDE 7022 ET
RF CERTAINLY FLIRTIN 202Z

TNT 90 PROOF Z401
WFL SWEET LICIOUS 1044X
WHEATLAND STOUT 930W
RF FLIRTIN FOR CERTIN 37U

LFE POKER FACE 399Z
MDR/RUST/CD CENTERFOLD 52C
LFE BS SHEILA 82A

DRAKE POKER FACE 2X
LFE BS KATARINA 146X
LFE THE DARK NIGHT 350U
LFE BS SHEILA 136T

Only the second female on offer from a leading lady in our program. This lady caught a lot of attention at our open house in 2021. Centerfold 52C a \$15,000 homo polled and homo black female coming from 45th Agribition Sale. Coming off a successful show season with her dam LFE BS Sheila 82A leading into that sale. Spending some time in the herd of the late Paul Maxwell who we had worked closely with. Centerfold made an easy transition into our program. Her dam LFE Sheila 82A needs no introduction, with successful progeny across the country. Many great ones selling through the Gala sale. Paired with the great Rust Rio Grande 7022. The Wescott son out of the great RF Certainly Flirtin 202Z cow. A full sib selling heifer calf selling in the top end of 2021 Ottawa Valley sale. 105J will be no exception. Perfect combo of production and style. A female that will follow in the footsteps of her dam and grand dam. Bred to the calving ease Slider for an exciting mating.

Bred March 23, 2022 to **KWA Slider 196H**. Preg checked safe.

Consigned by: **FOLEY SIMMENTALS**

37

A: 3 GRADE A EXPORTABLE EMBRYOS: MDR/RUST/CD CENTERFOLD 52C X TCCO TONIC 931G

GUARANTEEING 1 90 PREGNANCY IF TRANSFERRED BY AN ACCREDITED TECHNICIAN. MAX OF 2 ADDITIONAL EMBRYOS PROVIDED.

LFE POKER FACE 399Z
MDR/RUST/CD CENTERFOLD 52C
LFE BS SHEILA 82A

TCCO BIG SPENDER 659D
TCCO TONIC 931G
TCCO TIGHT PANTS 155Y

An exciting mating from one of our leading donors MDR/Rust/CD Centerfold 52C. Her dam Sheila now calls RPCC home owned by River Point, Xcel and the Clarke family. Sheila continues her long list of genetic success with Centerfold being no exception. Paired with the exciting sire TCCO Tonic 931G from Canadian Sires. Tonic coming from Tableland pedigrees that need no introduction. The first calves hit the ground at our place this year and have performed exceptionally well. Watch for some Tonic x Centerfold bulls on offer from our program.

Embryos are stored at Embrun Vet Clinic :: Embrun, Ontario
Embryos are non-exportable.

Consigned by: **FOLEY SIMMENTALS**



MDR/RUST/CD Centerfold 52C
dam to embryos



TCCO Tonic 931G
sire of embryos



DYLN Jade 101J
maternal sibling to embryos

38

RVCC RED KEPT FORTUNE 01K#1400603 | JAN 1, 2022 | BREW 01K | **SIMMENTAL** | POLLED

HEIFER CALF

Act BW	Adj WW	Adj YW	BW	WW	YW	MLK	CE	MCE
82	786	N/A	5.6	78.4	110.8	24.8	5	2.5

RF CAPACITY 742E
SVS DYNASTY 915G
 WFL RED SAGE 506C

WFL WESTCOTT 24C
 RF FAMOUS 409B
 R PLUS RELOAD 2006Z
 WFL RED SAGE 1003Y

GWS EBONY'S TRADEMARK 6N
RVCC BLK FOUND FORTUNE 04F ET
 RPCC RED TREASURE 212T

WLE POWER STROKE
 NJC EBONY ANTOINETTE
 HRC RED PERFECTION 20P
 RPCC PRETTY IN RED 206P

Here is my favourite heifer calf this year. Deep, thick, tanky and soft made is a great way to describe this powerful calf. Dynasty has a stacked maternal pedigree combining the great Sage donor cow and Famous family from Rancier's. Her dam 04F is the result of my Pick of the Herd Flush from RPCC a few years back. I think this one has a really bright future ahead of her.

Consigned by: **RIDGEVIEW CATTLE CO**



LOT: 38

SVS Dynasty 915G
sire

39

RVCC BLK HONEY KRULLER 08K#1400604 | JAN 7, 2022 | BREW 08K | **SIMMENTAL** | POLLED

HEIFER CALF

Act BW	Adj WW	Adj YW	BW	WW	YW	MLK	CE	MCE
90	700	N/A	2	65	92.7	18.1	10.6	4.8

TCCO BIG SPENDER 659D
TCCO TONIC 931G
 TCCO TIGHT PANTS 155Y

PROFIT
 TCCO BLACK KOKO 2X
 KBR/TCCO BUCK CHERRY 901W
 TCCO HOT KITTEN 730T

REMINGTON LOCK N LOAD 54U
BAR L7 MISS HONEY 45U-48Z
 REMINGTON HONEY 45U

REMINGTON ON TARGET 2S
 BAR 15 MISS KNIGHT78E-51G
 KS THE DUKE S30
 HPF MS HONEY R007

If you like them long bodied, great fronted and well-made Honey Kruller is your girl. Her dam 48Z has been a never miss cow here. Sired by the outcross Tonic bull puts a neat twist on her pedigree. Colton Metske has a maternal sister he thinks a lot of. 08K could be a lot of fun at next years YCSA National in Ancaster!

Consigned by: **RIDGEVIEW CATTLE CO**



LOT: 39

TCCO Tonic 931G
sire

40

RVCC BLK KNOCKOUT 12K#1400605 | JAN 13, 2022 | BREW 12K | **SIMMENTAL** | POLLED

HEIFER CALF

Act BW	Adj WW	Adj YW	BW	WW	YW	MLK	CE	MCE
94	678	N/A	4.5	74.6	104.1	16	5.6	1.1

WS PILGRIM H182U
PROFIT
 WAGR PANARAMA 204Z

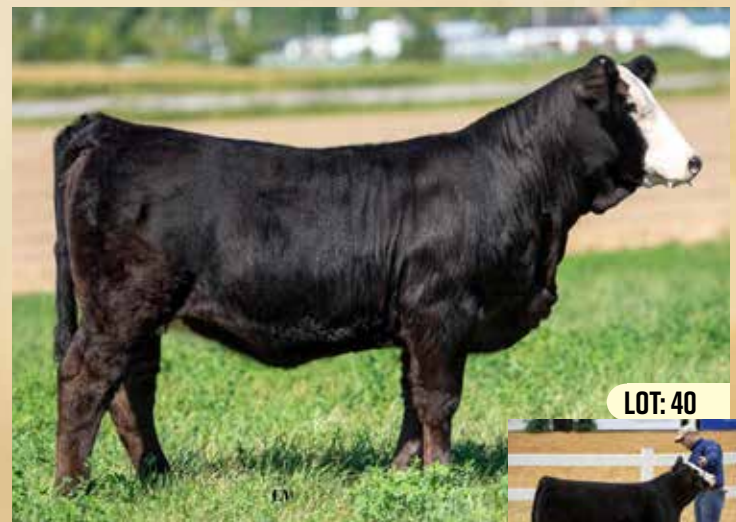
CNS DREAM ON L186
 WS MARLA 276M
 MR HOC BROKER
 3C MELODY M668 BZ

LFE BS LEWIS 322U
RPCC BLK DAZZLER 235D
 RPCC 'X' MARKS THE SPOT

R PLUS BLACKEDGE
 LFE BS MS ARNOLD 135S
 GWS EBONY'S TRADEMARK 6N
 RPCC RED TREASURE 212T

235D was my pick of the 2016 RPCC Internet Sale and has been a great producer ever since. 12K's sire Profit needs no introduction being the sire of many show stoppers and sale toppers. Last year a full sister sold to the Colvin's and they are very excited about her future, Knockout won't be any different!

Consigned by: **RIDGEVIEW CATTLE CO**



LOT: 40

RPCC Blk Dazzler 235D
dam

FALL GALA SALE 21



LOT: 41

RVCC Blk Jquarta 07J
maternal sister to dam



41

RVCC CGF BLK JAQUARTA 17J

#1400602 | JAN 18, 2021 | BREW 17J | SIMMENTAL | POLLED

BRED HEIFER	Act BW	Adj WW	Adj YW	BW	WW	YW	MLK	CE	MCE
	74	N/A	N/A	5	88.8	129.4	19.6	6.6	3.9

WFL WESTCOTT 24C
RF CAPACITY 742E
RF FAMOUS 409B

TNT 90 PROOF Z401
WFL SWEET LICIOUS 1044X
SVS CAPTAIN MORGAN 11Z
RF FAMOUS 127Y

SPRINGCREEK OLYMPIAN 66A
RVCC BLK EQUARTA 02E
RPCC BLK BQUARTA 232B

SPRINGCREEK ALL IN 155Y
SPRINGCREEK LINNE 33R
MR HOC BROKER
MS EQUARTA HR W974

Deep sided and wide topped with a neat blaze face describe this excellent female. Her dam 02E is a favourite around here. A closely related calf was very popular in last years Gala selling to Lobster Point. Her service to the calving ease specialist Gold Key should make for exciting calf!

Bred April 10, 2022 to WHL Gold Key 1619D. Preg checked safe.

Consigned by: RIDGEVIEW CATTLE CO &
COLVIN CENTURY FARM



LOT: 42

LFE Stratton 3094F
service sire



42

RVCC RED JIN N PEPSI 10J

#1354303 | JAN 6, 2021 | BREW 10J | SIMMENTAL | POLLED

BRED HEIFER	Act BW	Adj WW	Adj YW	BW	WW	YW	MLK	CE	MCE
	62	N/A	N/A	-0.7	76.2	111.3	22	15.5	6.9

HOOKS SHEAR FORCE 38K
WHL RED HEAT 1734E
CMS SODA POP 422B

NICHOLS LEGACY G151
C&D TRACY
DRAKE POKER FACE 2X
HPF CREAM SODA Y010

WFL WESTCOTT 24C
RVCC BLK GIN N PEPSI 05G ET
JDF PEPSI 61U

TNT 90 PROOF Z401
WFL SWEET LICIOUS 1044X
REMINGTON ON TARGET 2S
JDF MATTIE 61R

The first calf off of Pepsi 05G, an exciting Westcott X JDF Pepsi 61U daughter that I think will have a big impact on my program. Very sound and well made carrying a service that I think will hit a homerun. Two great cow families in 10J's pedigree the Pepsi's and the Soda's!

Bred April 8, 2022 to LFE Stratton 3094F. Preg checked safe.

Consigned by: RIDGEVIEW CATTLE CO



LOT: 43

WHL Gold Key 1619D
service sire



43

RVCC BLK JACKPOT 03J

#1354295 | JAN 2, 2021 | BREW 03J | SIMMENTAL | POLLED

BRED HEIFER	Act BW	Adj WW	Adj YW	BW	WW	YW	MLK	CE	MCE
	75	N/A	N/A	4.7	79.4	116.3	24.3	6	2.4

WFL WESTCOTT 24C
RF CAPACITY 742E
RF FAMOUS 409B

TNT 90 PROOF Z401
WFL SWEET LICIOUS 1044X
SVS CAPTAIN MORGAN 11Z
RF FAMOUS 127Y

GWS EBONYS TRADEMARK 6N
RVCC BLK FOUND FORTUNE 04F ET
RPCC RED TREASURE 212T

WLE POWER STROKE
NJC EBONY ANTOINETTE
HRC RED PERFECTION 20P
RPCC PRETTY IN RED 206P

03J is going to be a big easy keeping cow that brings in a scale crusher each year. A maternal sister sold to Foley Simmentals in 2020 and they are very happy with her. Capacity progeny have proven to be very functional cattle. Backed by one of my favourite cow families.

Bred April 12, 2022 to WHL Gold Key 1619D. Preg checked safe.

Consigned by: RIDGEVIEW CATTLE CO



WISERS MARY JASMINE 201J

#1361684 | JAN 8, 2021 | BVA 201J | SIMMENTAL | POLLED

BRED HEIFER

Act BW	Adj WW	Adj YW	BW	WW	YW	MLK	CE	MCE
70	N/A	N/A	2.2	86.1	120.5	20.7	11.7	6.5

TRIPLE C SINGLETARY S3H
CCR COWBOY CUT 5048Z
 CCR MS 4045 TIME 7322T

HOOKS SHEAR FORCE 38K
 LUCAS JOSIE 19K
 HTP SVF IN DEW TIME
 CCR MS PRETTY 4045P

SS/PRS HIGH VOLTAGE 244X
WISERS MARY GAGA 204G
 WISERS MARY DOTTIE 204D

HTP/SVF DURACELL T52
 KENCO MILEY COTTONTAIL
 STF KILLER JOE ZT80
 WISERS MISS ZITA 204Z

Colin's 2021 4-H project, this eye-catching Cowboy Cut daughter is a difficult one to sell. As a calf, Jasmine took the title of Champion Female at the Thorndale Beef Club achievement day. She has developed into a stylish, deep body, smooth moving, functional female that will work in any operation. Jasmine is out of a Mary cow family that runs deep in our herd, always producing powerful, easy keeping, and excellent uddered females.

AI bred April 20/22 to GSC GCCO Dew North and exposed to RPCC CFFI XCEL Kayce Dutton 252J. Ultrasound safe to April breeding.

Consigned by: **WISER HEIGHTS STOCK FARMS**



LOT: 44



GSC GCCO Dew North 102C
service sire of Wisers Height Stock Farms consignments



WISERS MARY JOLIE 210J

#1361687 | FEB 16, 2021 | BVA 210J | SIMMENTAL | POLLED

BRED HEIFER

Act BW	Adj WW	Adj YW	BW	WW	YW	MLK	CE	MCE
81	N/A	N/A	3.9	73.9	102.2	18.4	8	4.3

SPRINGCREEK OLYMPIAN 66A
RPCC BLK FIRST CLASS 226F
 RF CHOCOLATE ROSE 230Z

SPRINGCREEK ALL IN 155Y
 SPRINGCREEK LINNE 33R
 RF DOUBLE UP 37W
 RF CHOCOLATE ROSE 7R

STF KILLER JOE ZT80
WISERS MARY DOTTIE 204D
 WISERS MISS ZITA 204Z

ELLINGSON LEGACY M229
 STF CHARISA T809
 XCEL EBONY'S INFLUENCE
 WAYDAMAR MARYLOU 68M

Jolie is an attractive female that combines style and balance, she is a moderate frame, deep body, easy doing heifer that just keeps getting better as she matures. The RPCC Blk First Class bull has given us some exceptional females that have produced some really nice replacement heifers and market topping steers. We feel she will make an impact in her new owner's program. Ultrasound safe to GSC GCCO Dew North for a first of January calf. Jolie is halter broke, kid and chaos proof.

Bred March 27, 2022 to GSC GCCO Dew North. Preg checked safe. Exposed to RPCC CFFI XCEL Kayce Dutton 252J May 14 - June 22.

Consigned by: **WISER HEIGHTS STOCK FARMS**



LOT: 45



Wisers Mary Fiona 201F
maternal sister



WISERS MARY JELLY 213J

#1361689 | FEB 26, 2021 | BVA 213J | SIMMENTAL | POLLED

BRED HEIFER

Act BW	Adj WW	Adj YW	BW	WW	YW	MLK	CE	MCE
78	N/A	N/A	4.9	75.6	108.4	18.4	6.3	3.8

SPRINGCREEK OLYMPIAN 66A
RPCC BLK FIRST CLASS 226F
 RF CHOCOLATE ROSE 230Z

SPRINGCREEK ALL IN 155Y
 SPRINGCREEK LINNE 33R
 RF DOUBLE UP 37W
 RF CHOCOLATE ROSE 7R

MAPLEROSE MR 28Y
WISERS MARY AMBER 205A
 WAYDAMAR MARYLOU 68M

WHEATLAND BULL 680S
 MAPLEROSE SHAWNA
 NICHOLS BLK DESTINY D12
 WAYDAMAR RED LADY 67J

This powerful baldy heifer goes back to our foundation cow family. She may not be the flashiest female in the pen, but she has the genetics and power to produce the offspring you desire. Her dam is 10 years old, still youthful and has a perfect udder, which she has passed on to all her daughters. She will be an asset to any type of program. Ultrasound safe to GSC GCCO Dew North for a mid-January calf. Jelly is halter broke, kid and chaos proof.

Bred April 6, 2022 to GSC GCCO Dew North. Preg checked safe. Exposed to RPCC CFFI XCEL Kayce Dutton 252J May 14 - June 22.

Consigned by: **WISER HEIGHTS STOCK FARMS**



LOT: 46



Wisers Curella Holly 212H
paternal sibling



LOT: 47

SVS Rancher 42H
sire



47

FARL MS RANCH LADY

#1396947 | JAN 26, 2022 | FARL 8K | **SIMMENTAL** | POLLED

HEIFER CALF	Act BW	Adj WW	Adj YW	BW	WW	YW	MLK	CE	MCE
	90	N/A	N/A	5.1	90	131.1	25.4	6.2	4.6

SVS TYCOON 841F
SVS RANCHER 42H
HLTS SAMMIE

NUG ROYAL RED 324A
MAF PASHMENIA 160C
NUG PASHMENIA 403P

SVS BROOKS 669D
SVS RED ANNIE 411B
WS BEEF KING W107
BRANT DONT YA LOVE ME

LFE BLACK LAKOTA 385W
TRIPLE C SMARTY PANTS R
PVF-BF BF26 BLACK JOKER
NUG VIOLET243M

Lot 47 is the resulting calf of the beautiful MAF Pashmenia 160C cow we bought from the exemplary Meadow Acres dispersal and the new hot bull on the market, SVS Rancher 42H. Genetics from some of the top operations in Western Canada. FARL Ms Ranch Lady 8K is dark red, long bodied, smooth made, nice footed with a feminine front end. We feel this calf will be foundation type female. Tested Homo Polled as an added bonus.

Consigned by: **FAR-L FARMS**



LOT: 48

CCLT Alliance 91C
sire



48

JCF KELBY

#1400689 | JAN 26, 2022 | JCF 12K | **SIMMENTAL** | POLLED

HEIFER CALF	Act BW	Adj WW	Adj YW	BW	WW	YW	MLK	CE	MCE
	72	N/A	N/A	2.6	79.8	102.6	24.2	9.6	3.4

WS PILGRIM H182U
CCLT ALLIANCE 91C
BROOKS SHINIA 1A

CCR COWBOY CUT 5048Z
WISERS BLK ECLIPSE GIA 203G
WISERS BLK ECLIPSE 204E

CNS DREAM ON L186
WS MARLA 276M
BB BARACK 1017T
BROOKS RED HOT Y17

TRIPLE C SINGLETARY S3H
CCR MS 4045 TIME 7322T
DUNC'S FLASHPOINT 4C
RPCC BLK CRUELLA 214C

JCF Kelby has been one of our favourite purebred Simmental calves since she hit the ground. We really like the female for femininity, she is really clean fronted, deep bodied and sound on the move. This female has the sweetest disposition and will be a fun project and addition to any cow herd.

Consigned by: **CRAWFORD FARMS**



LOT: 49

HFL Endgame 911G
sire



49

JCF KLIPSO

#1400715 | FEB 17, 2022 | JCF 59K | **PERCENTAGE** | POLLED

HEIFER CALF	Act BW	Adj WW	Adj YW	BW	WW	YW	MLK	CE	MCE
	80	N/A	N/A	N/A	N/A	N/A	N/A	N/A	N/A

MRL MISSILE 138C
HFL ENDGAME 911G
JACKSON ROSE 23D

COME AS U R RED ROCKET
MRL MISS 2423Z
SVS CAPTAIN MORGAN 11Z
SPRINGCREEK LINNE 33R

SIMMENTAL/CROSSBRED

JCF Klipso 59K is a percentage female we are excited to offer out of one of our favourite crossbred cows and HFL Endgame 911G. This baldy is put together in all the right ways, she has length of body, moves well on all fours and deep bodied. We feel this heifer will make a great bred yearling and mature cow in the future.

Consigned by: **CRAWFORD FARMS**

50

WADE JYNX 1J#1400324 | FEB 22, 2021 | WADE 1J | **SIMMENTAL** | POLLED

BRED HEIFER

Act BW	Adj WW	Adj YW	BW	WW	YW	MLK	CE	MCE
75	N/A	N/A	5.4	75.5	113.2	22.9	5.2	0.8

3C W/C RIGHT TRACK W9462
W/C WIDE TRACK 694Y
 MISS WERNING 694S

HRM RIGHT ON T08
 3C STEVIE S6509 B
 PVF-SSH 1L10 LIBERTY
 MISS WERNING 294M

REMINGTON RED LABEL HR
RPCC RED BLOSSOM 235B
 RPCC YELLOW ROSE 211Y

CNS DREAM ON L186
 HS REFLECTIONS J34
 LCHMN BODYBUILDER 7303F
 RPCC RED ROSE 201M

This black baldy heifer is from our best Purebred cow on the farm. Big bodied, footed and big boned. Easy fleshing. Her Dam was Grand Champion Female at the 2014 Simmental Junior Show at the RAWF. JYNX is also a maternal sister to Clarke Family Farms Wade Daisy 1D who was the high selling heifer in their sale for 20,000 and Grand Champion Female at the 2022 OYCSA Trillium Classic. If you are looking for a highly productive female from a proven cow family JYNX is the one you need to own.

Bred April 19, 2022 to GSC GCCO Dew North. Preg checked safe.

Consigned by: **TERRACE HILL FARM**



LOT: 50



GSC GCCO Dew North
 service sire

51

STEWART KALM WOMAN#1401114 | FEB 10, 2022 | MMSL 10K | **SIMMENTAL** | POLLED

HEIFER CALF

Act BW	Adj WW	Adj YW	BW	WW	YW	MLK	CE	MCE
N/A	N/A	N/A	3.5	73.3	111.3	19.1	9	2.5

REMINGTON LOCK N LOAD 54U
STF ROYAL AFFAIR Z44M
 STF ONYX 451W

REMINGTON ON TARGET 2S
 BAR 15 MISS KNIGHT78E-51G
 STF DOMINANCE T171
 GCF MISS CALIENTE

W/C WIDE TRACK 694Y
STEWART EXQUISITE WOMAN
 STEWART DUNC YOUNGERWOMAN

3C W/C RIGHT TRACK W9462
 MISS WERNING 694S
 RC CLUB KING 040R
 JUSTABOUT WILD WOMAN

Stewart Exquisite Woman consistently produces females that have lots of rib, excellent udders and mothering ability. This year is no different. Kalm Woman puts the parts together extremely well. She is sired by STF Royal Affair who is known for the terms "soggy and dimensional." Kalm Woman is one to look at sale day.

Consigned by: **STEWART LIVESTOCK**



LOT: 51



STF Royal Affair Z44M
 sire

52

STEWART RED KATHY#1401319 | MARCH 17, 2022 | MMSL 21K | **SIMMENTAL** | POLLED

HEIFER CALF

Act BW	Adj WW	Adj YW	BW	WW	YW	MLK	CE	MCE
N/A	N/A	N/A	2.6	71.2	105.4	18.4	8.6	4.3

WHEATLAND FINAL AFFAIR
STEWART GUTSY MAN
 STEWART CONFIDENT WOMAN

STF ROYAL AFFAIR Z44M
 WHEATLAND LADY 212Z
 FBF1 COMBUSTIBLE
 JUSTABOUT WILD WOMAN

LAH SUE 604S
STEWART GENUINE BEAUTY
 STEWART LAZY BEAUTY

CNS DREAM ON L186
 SHAWNEE MISS 145P
 JF MILESTONE 999W
 LAZY H CLASSY TOUCH W63

Red Kathy is a dark red baldy heifer calf we are really excited about. She has lots of eye appeal and dimension to go with it. Red Kathy has a bright future ahead.

Consigned by: **STEWART LIVESTOCK**



LOT: 52



Wheatland Final Affair
 paternal grand-sire

FALL GALA SALE **25**



LOT: 53A



LOT: 53B

53a **OUTSET HOTTIE 106H**

#1323783 | JAN 6, 2020 | OSSC 106H | **SIMMENTAL** | POLLED

Act BW	Adj WW	Adj YW	BW	WW	YW	MLK	CE	MCE
72	N/A	N/A	2.3	68.8	88.4	23.7	9.3	2.2

COW

WS PILGRIM H182U
CCLT ALLIANCE 91C
BROOKS SHINIA 1A

LAZY H PATHFINDER R104
DESTINY PATHFINDER SHADI
DESTINY JOKER SHADOW

CNS DREAM ON L186
WS MARLA 276M
BB BARACK 1017T
BROOKS RED HOT Y17

CNS DREAM ON L186
DRAKE MISS P36D
PVF-BF BF26 BLACK JOKER
WFL BLACK LADY 505H

53b **OUTSET CHEYENNE 112K**

#1401009 | JAN 12, 2022 | OSSC 112K | **SIMMENTAL** | POLLED

Act BW	Adj WW	Adj YW	BW	WW	YW	MLK	CE	MCE
72	N/A	N/A	1.4	76.9	104.5	27.2	12.7	5.4

HEIFER CALF

W/C BANKROLL 811D
IRCC DLC KING GEORGE 905G
IRCC DEBUTANTE 634D

CCLT ALLIANCE 91C
OUTSET HOTTIE 106H
DESTINY PATHFINDER SHADI

W/C LOADED UP 1119Y
MISS WERNING KP 8543U
IRCC BOOMSHAKALAKA 434B
IRCC BOOTY CALL 449B

WS PILGRIM H182U
BROOKS SHINIA 1A
LAZY H PATHFINDER R104
DESTINY JOKER SHADOW

We reached right to the top of our females to bring you this long bodied, extremely deep sided, nice uddered female. She's made two trips to town and brought home 2 Supreme Champions. We have a number of Alliance females, all with great udders doing an exceptional job for us. 4W has left us a lot of great females that we still have working. 106H outdid herself this year with a tremendous heifer calf, and we are so excited to see her baby next year!! This is the first service to the \$200K Lewis bred bull to sell in Canada. Show rights reserved for the 2022 RAWF.



LFE Loyalty 836H
service sire

Bred April 2, 2022 to LFE Loyalty 836H.
Preg checked safe.

Consigned by: **OUTSET CATTLE CO**

Carbon copy of mama!!! This super wide topped, nice fronted, eye catching heifer with a ton of rib shape has made a lot of friends already this year. Jump in on the excitement as she shows alongside mama at the 100th RAWF in November. We are willing to keep this heifer to get her ready for the National Junior Simmental Show held in Ontario next summer. Show rights reserved for 2022 RAWF.



IRCC DLC King George 905G
sire

Consigned by: **OUTSET CATTLE CO**



LOT: 54

W/C Relentless 32C
sire

54 **BWCC RIHANNA 310K**

#1401137 | MARCH 10, 2022 | BWCC 310K | **SIMMENTAL** | POLLED

Act BW	Adj WW	Adj YW	BW	WW	YW	MLK	CE	MCE
73	N/A	N/A	1.8	74.8	102.7	20.2	10.7	4.1

HEIFER CALF

YARDLEY UTAH Y361
W/C RELENTLESS 32C
MISS WERNING KP 8543U

CCR COWBOY CUT 5048Z
BWCC FLEETWOOD MAC
SFV/CLRWTR SHEZA STAR

GCC HARD AS STEEL 144W
MISS YARDLEY T170
WAGR DREAM CATCHER 03R
MISS WERNING 534R

TRIPLE C SINGLETARY S3H
CCR MS 4045 TIME 7322T
WLE BS BENCHMARK
SVF SHEZA STAR N902

First of all we would like to Thank Reed & Jane and the girls for allowing us to be part of the Gala. When we set out to start putting together some Simmental genetics we purchased a Simmental pregnancy from Bohron and this turned out to be the dam of Rhianna 310K. We sure do love this Cowboy Cut daughter out of the Sheza Star cow family from the States. Rhianna 310K sure does have beautiful lines and that cocky look we all love. We are sure she will have the perfect udder just like her dam.

Consigned by: **WATSON CATTLE CO**

55

BWCC KLASSY K 103K

#1401136 | JAN 3, 2022 | BWCC 103K | PERCENTAGE | POLLED

HEIFER CALF

Act BW	Adj WW	Adj YW	BW	WW	YW	MLK	CE	MCE
82	N/A	N/A	1.9	53.9	76.6	19.4	5.5	2.0

MR HOC BROKER
IRCC BOOMSHAKALAKA 434B
 IRCC XCELLA 2X

MR HOC BROKER
BWCC HAPPYHOUR 104H
 ANGUS/SIMMENTAL

SVF STEEL FORCE S701
 JM BF H25
 GWS EBONYS TRADEMARK 6N
 IRCC U GO GIRL 804U

SVF STEEL FORCE S701
 JM BF H25

Klassy is Carly's 4H heifer, so we would like to retain show rights on her till after the Royal. She is sired by IRCC Boomshakalaka and her dam is a Broker 2 yr old - yes, that's right a double bred Broker. The Broker's go on to be great cows. We love all the power and performance this girl has with that killer look. She's only 75% but don't let that scare you. Breed her up to get a purebred!

Consigned by: **WATSON CATTLE CO**



LOT: 55



MR HOC Broker
maternal grand sire

Ontario
SIMMENTAL Association
SIMMENTAL INFLUENCE
FEEDER CALF SALE
 KEADY LIVESTOCK MARKET
OCTOBER 29 2022

Sold in Owner Lots

For more info and to consign contact:

REED CRAWFORD 519- 857- 7333
 JARRETT JOHNSON 519- 379- 6404

COMMERCIAL, PUREBRED & FULLBLOOD CALVES WELCOME!

GOIN SHOWIN
Simmentals
 AUGUST 4, 5 & 6
2023
 Ancaster, ON
NATIONAL CLASSIC
 YOUNG CANADIAN
 SIMMENTAL ASSOCIATION
 HOSTS OF THE CSA AGM 2023



BOHRSON
MARKETING SERVICES

RR 4 - SITE 7 - BOX 28 OLDS, AB T4H 1T8

If you wish to stop receiving catalogues from
BMS, please email jodi@bohrson.com or call/text
403-519-3515 to be removed from the mailing list



RETURN POSTAGE GUARANTEED
PORT DE RETOUR GARANTI

Sunday
OCTOBER
16th 2022
1:00PM

