



29th ANNUAL BULL SALE



FRIDAY • FEBRUARY 23 2024 • 1:00 PM
CAMROSE ALBERTA

MAXWELL SIMMENTALS - RANCIER FARMS

29th Annual Bull Sale

FRIDAY, February 23, 2024, Camrose, Alberta

Welcome to the 29th annual sale. On behalf of the Maxwell and Rancier families we would like to thank you for your interest in our programs and for taking your time to go through the catalogue. We are extremely proud of the set of bulls we have on offer. After many years of listening to our customers we hope we have the type and quality of cattle that you have been looking for.

As we write this it has been a very mild winter until this cold spell in January. The warm fall and start to winter has helped save feed especially for the areas who have had a very dry summer. All we can do is focus on what we can control and hope for moisture in the spring. We believe buying superior seedstock always pays off over time as good cattle cost the same to feed as poor ones but will guarantee a larger return on investment.

Agriculture keeps our families very busy doing the jobs we love to do and allowing us some time for the fun things and the odd small vacation. At the end of each day, when you reflect back on your accomplishments, they are usually quite gratifying.- doing what you like to do, in a safe and healthy environment, and most importantly, with the people that make your day go smoothly. We know that success will follow hard times because the industry has lived through these cycles before. In the meantime, we will make the best choices we can and look forward to the future.

We are very confident in the group of bulls we have on offer. They could be the most uniform and consistent offering to date. Both herds have made a huge commitment to raising a high quality product. We rely heavily on AI and ET to produce cattle that are functional and built for their environment. ET has allowed us genetics from the most superior cows in the breed fast forwarding the quality. We also do not take buying herd sires lightly. We both strive to get the best ones available to walk in our pastures.

The bulls are developed on a high roughage TMR ration and kept in large pens to allow them to get out and move around. The fact that over 85% of our customers are repeat buyers speaks loudly to the feeding programs these bulls are on. Attention to detail in feeding and management is very important to us. Both herds are frequently visited by experienced feed consultants. We guarantee you a bull that is structurally sound and has passed a semen test done by a licensed veterinarian.

We are very grateful of the support we have had over the past years from our customers. It is always exciting to tour new and old customers through the bull pens. One of the great parts of this business is the people we get to meet. Some have become long-time friends; you know that when a 5 minute phone call turns into an hour.

If you need any assistance in selecting your bulls, give any one of us a call, or better yet, stop by our farms before the sale. We are only a few miles apart. We also have a very competent sales staff that know our programs and will confidently handle your purchases. If you are not 100% satisfied, please let us know and it will be looked after immediately.

We invite you to Camrose for February 23 and look forward to seeing you sale day.

Rancier and Maxwell Families



Garth, Angela, Kade & Abby Rancier
(780) 385-2425

Garth's Cell: (780) 385-5313
rancierfarms@xplornet.ca
www.rancierfarms.com



Glen & Leigh Maxwell: (780) 336-2030
Glen's Cell: (780) 385-5552
Bryce's Cell: (639) 998-5053

Kevin & Pru Maxwell: (780) 336-2146
Kevin's Cell: (780) 385-5625
Reece's Cell: (780) 385-5394
gnlmaxwell@gmail.com
www.maxwellsimmentals.com

MAXWELL SIMMENTALS - RANCIER FARMS

29th Annual Bull Sale

FRIDAY, February 23, 2024 • 1:00 PM • Camrose, Alberta

Camrose Regional Exhibition

Sale Day Phones

Glen Maxwell cell:(780) 385-5552

Kevin Maxwell cell:(780) 385-5625

Garth Rancier cell:(780) 385-5313

CRE:(780) 672-3653

Auctioneer:

Ryan Dorran.....(403) 507-6483

Ringmen:

Mark Stock.....(306) 678-4811

Taylor Richards.....(Bohrson Marketing)(306) 821-4169

Craig Flewelling.....(403) 556-0515

Bohrson Marketing Services

Scott Bohrson.....(403) 370-3010

Taylor Richards.....(306) 821-4169

Darryl Snider.....(403) 385-5561

Cody Haney.....(403) 845-8806

Nate Marin.....(306) 869-7130

Billy Elmhirst.....(705) 761-0896

Rob Voice.....(306) 270-6082

Sale Consultants

Jim Pulyk.....(780) 787-0646

Peterosa Exports

Roger Peters.....(403) 828-9815

DELIVERY:

\$100 off per lot if picked up sale day. Bulls will be kept free of charge for a reasonable length of time, usually until you need them. In rare cases and for convenience reasons, you may be asked to receive your bull(s) when delivering other bulls to your area. All bulls must be insured if going back to the seller's farm unless arrangements have been made between the buyer and seller. Insurance will be available on sale day.

VOLUME DISCOUNTS:

Because of the quality and consistency of bulls offered, they will sell in everyone's budget. It is very likely you will be able to buy all of your bulls here. Those of you who purchase three or more bulls at this sale there will be a 5% discount applied against your total purchase price.

HEALTH OF BULLS:

The two breeders guarantee to sell you a bull that is structurally sound and has passed a semen test done by a licensed veterinarian. Both herds are on a very rigid health program.

SIGHT UNSEEN PURCHASING:

Every year more and more bulls are purchased sight unseen because of the increasing number of repeat buyers. Contact the seller of the bull(s) of your choice, they will discuss the bulls with you and then forward you on to one of our very knowledgeable sales staff members. Then you, the buyer can get your business done in very confidential and professional manner.

TERMS & CONDITIONS:

These bulls sell under the standard terms and conditions set forth by the Canadian Simmental Association.

SEMEN RESERVE:

The two breeders reserve the right to collect semen for in herd use only on any bull in our sale. Semen would be collected at the seller's expense and buyers' convenience.

INSURANCE:

Insurance representatives will be present on sale day. We strongly encourage you to insure your bull purchases.

CAN'T MAKE THE SALE?

Watch, Bid & Buy Online

To view & bid visit www.dlms.ca, log-in with your username and password or sign-up for your free user account.

BIDDERS - click BUYER APPROVAL tab, select the sale you are interested in bidding at and click sign up.

For more information call:

Mark Shologan 780-699-5082 or Purebred Team 780-991-3025

DLMS
www.dlms.ca
Direct Livestock Marketing Systems

CANADA'S ONLINE SEEDSTOCK SOURCE.

ONLINE VIEWING & BIDDING

View CATALOGUE Online At:

www.cattlepics.com

www.bohrson.com

View VIDEOS Online At:

www.dlms.ca

www.maxwellsimmentals.com

www.rancierfarms.com

Barn: (780) 336-2243
 Box 188, Viking, Alberta
 T0B 4N0
 gnlmaxwell@gmail.com
 www.maxwellsimmentals.com



Check our website and Facebook page for updated information.

Find us on Google maps.

DIRECTIONS: 45 miles east of Camrose on HWY 26 crossing HWY 36 to Range Road #130 sign at corner turn south 4 miles then east ¼ mile. We look forward to visitors.

Glen & Leigh Maxwell	Kevin & Pru Maxwell
Ph: (780) 336-2030	Ph: (780) 336-2146
Cell: (780) 385-5552	Cell: (780) 385-5625
Bryce Maxwell	Reece Maxwell
Cell: (639) 998-5053	Cell: (780) 385-5394

1 NUG BANE 132L
 DILUTER FREE • HORNEFB
 NUG 132L • 1436000 • FEB.6.2023

BW	Sep4	Dec29	365 Adj
91	786	1325	1475

CE	BW	WW	YW	MILK	MCE	MWWT
5.6	4.8	78.6	112.7	37.2	4.1	76.5



NAC BATTLE CRY 4F
S: BLACK GOLD BATTLE 40H
 BLACK GOLD MS EILEEN 68F

STARWEST TOTAL VALUE
D: NUG KRYSTAL 675D
 NUG CHIQUITA 275T

BEE BATTLE CRY 282B
 MI MS DALLAS 39D
 SOUTHSEVEN MR ADONIS 96Z
 MS BGS EILEEN 29X

DOUBLE BAR D SPITFIRE 20X
 PHS POLLED WINFALL 27W
 GIDSCO APPOLLO 3F
 NEW TREND SASSY 6K

A feature fullblood bull and one that has been a pleasure to watch develop along his dam all summer long. He packs so much dimension into his frame yet maintains structure quality and smoothness throughout. It is not often you will find a fullblood bull with this much muscle shape and capacity in a clean made profile all while having a modest birthweight. Bane's dam is one of the most docile nice uddered dams on the farm who has been beyond productive and one that puts everything into her offspring. This is her natural calf and she is also the dam of 5L in the sale as well as our fullblood FNL consignment from the fall purchased by Robb Farms. She has been flushed successfully the last few years and is going to continue to have a big impact on our herd.



Dam of Lot 1 & 18

2

NUG PRISM 30L

HORNED FB

NUG 30L • 1434738 • JAN.11.2023

BW Sep4 Dec29 365 Adj

94 982 1425 1445

CE BW WW YW MILK MCE MWWT

9.7 3.6 87.7 125.1 39.3 5.6 83.2



NAC BATTLE CRY 4F
S: BLACK GOLD BATTLE 40H
 BLACK GOLD MS EILEEN 68F

STARWEST POL BLUEPRINT
D: NUG POPPY 104F
 NUG LACE 830U

BEE BATTLE CRY 282B
 MI MS DALLAS 39D
 SOUTHSEVEN MR ADONIS 96Z
 MS BGS EILEEN 29X
 ANCHOR "T" RUSTY 59G
 PHS HOMOZYGOUS XCEPTIONAL
 BAR 5 SA HARRACH 801P
 NUG TARBEL 369N



Sire of lot 1-10

One of the pen favourites in the fullblood division. He packs as much mass and capacity you can get into his moderate frame. Very soft made and deep sided body style while still being extremely free moving with plenty of hair. The Battle sons topped the sale last year and his daughters were very well received in the heifer sale. We are extremely excited to get our battle daughters into their first year of production as they are solid colored, full of hair, beautiful uddered, and have that pear shaped angular conformation. With Blueprint and Harrach on the bottom side of the pedigree this guy will be a true female producer. Prism will have a lot of people gathered around his pen sale day and we think he has all the bells and whistles to make a tremendous herd sire.

3

NUG LESTER 141L

HORNED FB

NUG 141L • 1436224 • FEB.10.2023

BW Sep4 Dec29 365 Adj

92 780 1285 1439

CE BW WW YW MILK MCE MWWT

8.0 4.1 78.8 112.0 37.0 6.9 76.4



A more moderate yet mighty made Battle son we are excited to offer. Lots of highly maternal genetics in this bull's pedigree. Big middled, heavy haired, and full of pigmentation like all the battle sons. Lester comes with a modest birthweight and is a really smooth made and free moving bull. Expect him to pass on his mother's traits to your cowherd as she is a very feminine low maintenance female that is one of the most elegant fullblood cows in the herd. With Battle Cry, Rusty, Adonis, and Romano in the pedigree I don't think you can really go wrong here. A bull that will leave you with some excellent uddered beautiful females.

NAC BATTLE CRY 4F
S: BLACK GOLD BATTLE 40H
 BLACK GOLD MS EILEEN 68F

BEE BATTLE CRY 282B
 MI MS DALLAS 39D
 SOUTHSEVEN MR ADONIS 96Z
 MS BGS EILEEN 29X

IPU CLASSIC 1X
D: NUG GODIVA 37E
 SOUTH-HOLDEN MIRA 27M

CHAMPS ROMANO
 IPU MS LAREDO 43S
 ANCHOR "T" RUSTY 59G
 CZAR MS ELIZABETH 17F

4

NUG COLUMBUS 113L

HORNED FB

NUG 113L • 1436154 • JAN.31.2023

BW	Sep4	Dec29	365 Adj
94	842	1340	1455

CE	BW	WW	YW	MILK	MCE	MWWT
9.5	2.8	80.4	119.7	35.6	4.7	75.8



NAC BATTLE CRY 4F
S: BLACK GOLD BATTLE 40H
 BLACK GOLD MS EILEEN 68F

LFE JUSTIFIED 7328X
D: NUG SANDY 554C
 NUG MONIQUE 893U

BEE BATTLE CRY 282B
 MI MS DALLAS 39D
 SOUTHSEVEN MR ADONIS 96Z
 MS BGS EILEEN 29X

LRX JUSTICE 33U
 NUG FARRAH 693S
 MFI JAHARI 5018
 NUG BARBRA 315N

A heavy haired son of Battle that has a real presence about him. Thick butted, soft made, wide topped, and moves like a cat. 113L will increase your steers weaning weights and give you some top producing females. 554C's daughters sold to XRC Simmentals and Circle M Farms in the Classic sale. Grant Ford and Laurenceson Farms have sons of this great uddered cow.



Maternal Sib to Lot 4

5

NUG FORT WORTH 150L

HORNED FB

NUG 150L • 1436673 • FEB.15.2023

BW	Sep4	Dec29	365 Adj
93	870	1315	1469

CE	BW	WW	YW	MILK	MCE	MWWT
5.9	5.5	88.5	124	40.3	4.3	84.6



NAC BATTLE CRY 4F
S: BLACK GOLD BATTLE 40H
 BLACK GOLD MS EILEEN 68F

BEE BATTLE CRY 282B
 MI MS DALLAS 39D
 SOUTHSEVEN MR ADONIS 96Z
 MS BGS EILEEN 29X

NUG SMUGGLER 296Y
D: RENDEZVOUS MS SNUGGY 175C
 RENDEZVOUS 583U

ANCHOR "T" IMPACT 2H
 NUG LORNA 314N
 SU PARAMOUNT 55P
 RENDEZVOUS 554P

Long bodied, smooth made, and thick haired bull who is very correct on the move. Both Battle and 150L's dam have given us those cherry red fullblood bulls that add mass and cow power to their progeny. Lots of herd bull producers in this guy's pedigree that have proved the test of time. Some solid genetics here that could be utilized in a lot of different ways.

6

NUG LOCHLIN 64L

HORNED FB

NUG 64L • 1434884 • JAN.19.2023

BW Sep4 Dec29 365 Adj

89 744 1190 1295

CE BW WW YW MILK MCE MWWT

8.8 4.0 71.9 104.8 37.8 6.5 73.8



NAC BATTLE CRY 4F
S: BLACK GOLD BATTLE 40H
 BLACK GOLD MS EILEEN 68F

ANCHOR D OUTLOOK
D: NUG CARLY 1H
 NUG KARLA 34F

BEE BATTLE CRY 282B
 MI MS DALLAS 39D
 SOUTHSEVEN MR ADONIS 96Z
 MS BGS EILEEN 29X
 VIRGINIA PRECISION 16C
 ANCHOR D Kael 255C
 BAR KR AVALANCHE 52X
 NUG CHIQUITA 275T

Thick made, lots of top, big testicles, very stylish, and a great haircoat. These Battle sons have that herd bull look that catches your eye when you walk into the bull pen. Lochlin should tidy up udders, improve foot structure, and have very gentle dispositions. Bulls like this have a lot to offer the beef business.

7

NUG LOWRY 154L

HORNED FB

NUG 154L • 1436689 • FEB.19.2023

BW Sep4 Dec29 365 Adj

105 774 1255 1430

CE BW WW YW MILK MCE MWWT

5.9 5.6 83.1 117.2 36.7 5.0 78.3



Lots of natural muscling, deep quartered, and has that thick hair coat for those frigid winter temperatures we are experiencing right now. We like these Battle sons for their easy-going dispositions, big weaning and yearling weights, and solid bone and foot structure. When we saw Battle's dam we knew we couldn't go wrong by adding that nice red goggled eyed color pattern, sound big feet, and tidy udder.

NAC BATTLE CRY 4F
S: BLACK GOLD BATTLE 40H
 BLACK GOLD MS EILEEN 68F

BEE BATTLE CRY 282B
 MI MS DALLAS 39D
 SOUTHSEVEN MR ADONIS 96Z
 MS BGS EILEEN 29X

IPU CLASSIC 1X
D: NUG MISS 157E
 NUG MISS 40Y

CHAMPS ROMANO
 IPU MS LAREDO 43S
 RPF P-10 FIRST CHOICE
 NUG AMIE 987W

8

NUG LESTER 80L

HORNED FB

NUG 80L • 1435402 • JAN.22.2023

BW	Sep4	Dec29	365 Adj
90	825	1310	1404

CE	BW	WW	YW	MILK	MCE	MWWT
5.9	4.6	77.1	109.4	38.0	5.1	76.6



NAC BATTLE CRY 4F
S: BLACK GOLD BATTLE 40H
 BLACK GOLD MS EILEEN 68F

VIRGINIA PAYDIRT 44E
D: NUG ROSE 50G
 NUG ROSE 27Z

BEE BATTLE CRY 282B
 MI MS DALLAS 39D
 SOUTHSEVEN MR ADONIS 96Z
 MS BGS EILEEN 29X

DOUBLE BAR D BANKER
 BROCK XAMPLE
 NUG TOBY 219U
 NUG MISS 251T

The Battle sired bulls are soggy and tanky beef bulls with lots of pigmentation and big dark hoofs. They come with a nice blend of calving ease and performance and are very maternal. The first calving Battle daughters look very good and look to be herd improvers. Karvonen Land & Cattle purchased a full brother to this guy last year. Doug and Stacy Taylor also have a son from 50G.



Maternal Grandsire to Lot 8

9

NUG JOEY 41L

HORNED FB

NUG 41L • 1434784 • JAN.13.2023

BW	Sep4	Dec29	365 Adj
93	740	1205	1235

CE	BW	WW	YW	MILK	MCE	MWWT
8.5	4.2	67.3	94.3	39.0	4.2	72.7



NAC BATTLE CRY 4F
S: BLACK GOLD BATTLE 40H
 BLACK GOLD MS EILEEN 68F

BEE BATTLE CRY 282B
 MI MS DALLAS 39D
 SOUTHSEVEN MR ADONIS 96Z
 MS BGS EILEEN 29X

CROSSROAD RADIUM 789U
D: NUG RACHEL 52G
 NUG KORI 258D

MF MR. EVAN 14P
 CROSSROAD PANDITA 308P
 STARWEST POL BLUEPRINT
 NUG MISS 73X

A combination of performance and maternal strength in this herd bull prospect. Soggy made, heavily pigmented, and with a big strong foot. His sire Battle 40H is siring a very consistent group of bulls and heifers in both quality and type. Some of the high sellers at the Camrose Classic were Battle daughters and he has turned into an overall very impressive herd sire for us. Joey is mothered by a model Radium x Blueprint cow who are both very prominent in many of our favourite fullblood dams pedigrees.

10

NUG LOUISVILLE 167L

HORNED FB

NUG 167L • 1440008 • MAR.1.2023

BW Sep4 Dec29 365 Adj

98 760 1205 1407

CE BW WW YW MILK MCE MWWT

6.0 5.3 83.1 115.8 39.0 5.4 80.6



This is 573C's natural calf who has done so much for us and after a successful flush that produced this guy's brothers in the sale she bred back very soon. He is the youngest bull in the offering and one that has so much potential. 167L fits the Battle 40H style of cattle and is what the beef business is all about. Lots of performance, highly maternal, and built for our environment. With his proven fertility and maternal strength 167L is a bull that

will cross very well with your cattle to make a desirable product to put money back in your pocket.



Dam of Lot 10

NAC BATTLE CRY 4F
S: BLACK GOLD BATTLE 40H
BLACK GOLD MS EILEEN 68F

BEE BATTLE CRY 282B
MI MS DALLAS 39D
SOUTHSEVEN MR ADONIS 96Z
MS BGS EILEEN 29X

BAR KR AVALANCHE 52X
D: NUG MAVIS 573C
NUG ELECTRA 15Y

BAR 5 SA HARRACH 801P
BAR KR MS RUSTY 68N
SBV IMPERIAL 204W
NUG TIFFANY 220M

11

NUG LYLE 70L

HORNED FB

NUG 70L • 1434906 • JAN.20.2023

BW Sep4 Dec29 365 Adj

108 900 1335 1397

CE BW WW YW MILK MCE MWWT

5.1 5.3 80.3 110.7 31.7 1.3 71.9



A high performing big hipped Motown son with lots of maturity. Very smooth made, good big feet, and always looks so proud. His dam who is known around here as Arnie as we acquired her as a mature cow from Greg Arneson's dispersal. In her short time she has already gave us two daughters in the herd and two high selling females to Dalyn Woloshyn and Rich-MC Simmentals. Good job on this purchase Snides.

FGAF FRENCH ATTACK 010C
S: ANCHOR D MOTOWN 865E
FGAF PRECIOUS THING 402T

SIBELLE DIRTY HARRY 25Z
VIRGINIAS JANE WEST
R-FIVE MALTESE
FGAF SHANTI 121P

SUNNY VALLEY SARGENT 24S
D: SGA 248A
4L MS PUMA 16S

DFM MARCUS 14M
MTV BECKY
EDN PUMA 45P
SANMAR PINA COLLADA 76P



12

NUG WARDOG 48LDILUTER FREE • HORNED FB
NUG 48L • T1434822 • JAN.16.2023

BW	Sep4	Dec29	365 Adj
94	1000	1450	1488

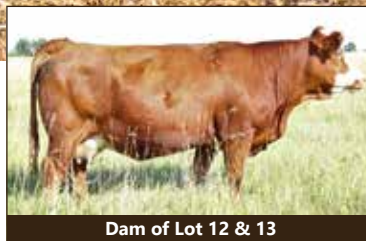
CE	BW	WW	YW	MILK	MCE	MWWT
7.4	3.7	85.7	120.3	32.5	4.9	75.4



FGAF FRENCH ATTACK 010C
S: ANCHOR D MOTOWN 865E
FGAF PRECIOUS THING 402T

BAR KR AVALANCHE 52X
D: NUG MAVIS 573C
NUG ELECTRA 15Y

SIBELLE DIRTY HARRY 25Z
VIRGINIAS JANE WEST
R-FIVE MALTESE
FGAF SHANTI 121P
BAR 5 SA HARRACH 801P
BAR KR MS RUSTY 68N
SBV IMPERIAL 204W
NUG TIFFANY 220M



Dam of Lot 12 & 13

I'm not sure if you can get a darker haircoat on a fullblood than this guy which is of no surprise as the dark red color pattern runs deep in his pedigree. He is a super deep made and a soggy individual that is built like a brick. 48L is part of our E.T flush brothers from our Avalanche 573C donor cow. She has produced herdbulls for Haldenby farms, SMB farms, Antrim Simmentals, and his flush brother is 72L as well as her natural calf 167L in this sale. Not only has she been a bull producing machine for us, but we also have two top end replacement females that we can't wait to get into production. Proven genetics here.

13

NUG LYNDON 72LDILUTER FREE • HORNED FB
NUG 72L • T1434834 • JAN.21.2023

BW	Sep4	Dec29	365 Adj
103	960	1450	1521

CE	BW	WW	YW	MILK	MCE	MWWT
6.3	5.9	82.9	121.8	32.5	4.2	74.0



FGAF FRENCH ATTACK 010C
S: ANCHOR D MOTOWN 865E
FGAF PRECIOUS THING 402T

BAR KR AVALANCHE 52X
D: NUG MAVIS 573C
NUG ELECTRA 15Y

SIBELLE DIRTY HARRY 25Z
VIRGINIAS JANE WEST
R-FIVE MALTESE
FGAF SHANTI 121P
BAR 5 SA HARRACH 801P
BAR KR MS RUSTY 68N
SBV IMPERIAL 204W
NUG TIFFANY 220M



Sire of Lots 11-15

A pasture favourite this summer and still has all the tools to be a great herdsire. Plenty of length, so much capacity, free moving, and extra growth. Both the bulls and heifers off this guy will be keepers. His donor dam has been a consistent producer year after year. Lots of great cow families in his pedigree and one you will want to take a serious look at.

14

NUG LACOMBE 94LDILUTER FREE • HORNED FB
NUG 94L • 1435419 • JAN.25.2023

BW	Sep4	Dec29	365 Adj
107	940	1375	1446

CE	BW	WW	YW	MILK	MCE	MWWT
2.5	7.5	93.7	135.9	33.6	1.9	80.5



A well-balanced meat machine here with lots of natural muscling and top. A bull you can really appreciate on the move and is sure to get your attention sale day with his explosive build. His sire Motown has crossed very well with our herd and his sons were many of our high sellers at last year's sale. From a no miss cow family and his dam also happens to be a maternal sister to our 675D



Maternal Grandsire to Lot 14

donor cow. 34F has a daughter in our herd and a son working for Gary Miskew.

FGAF FRENCH ATTACK 010C
S: ANCHOR D MOTOWN 865E
FGAF PRECIOUS THING 402T

SIBELLE DIRTY HARRY 25Z
VIRGINIAS JANE WEST
R-FIVE MALTESE
FGAF SHANTI 121P

BAR KR AVALANCHE 52X
D: NUG KARLA 34F
NUG CHIQUITA 275T

BAR 5 SA HARRACH 801P
BAR KR MS RUSTY 68N
GIDSCO APPOLLO 3F
NEW TREND SASSY 6K

15

NUG LARKIN 73LDILUTER FREE • HORNED FB
NUG 73L • 1434909 • JAN.21.2023

BW	Sep4	Dec29	365 Adj
97	904	1350	1414

CE	BW	WW	YW	MILK	MCE	MWWT
9.6	4.7	84.2	115.3	31.2	3.2	73.3



Some of these fullblood bulls can be a little tougher to picture and don't quite have the same style as the pure-breds but trust me this guy comes from some of most feminine pear-shaped cows on the farm. 139E, 94X, 1M are all tanky big barreled cows that have produced very well for us. His top side is also full of potent mother cows. Do not overlook this guy as he is bred to produce.



Dam of Lot 15

FGAF FRENCH ATTACK 010C
S: ANCHOR D MOTOWN 865E
FGAF PRECIOUS THING 402T

SIBELLE DIRTY HARRY 25Z
VIRGINIAS JANE WEST
R-FIVE MALTESE
FGAF SHANTI 121P

STARWEST POL BLUEPRINT
D: NUG SUZETTE 139E
NUG HANNA 94X

ANCHOR "T" RUSTY 59G
PHS HOMOZYGOUS XCEPTIONAL
MF MR. EVAN 14P
SUN STAR MS METRO 1M

16

NUG PIONEER 71LPOLLED FB
NUG 71L • P1457721 • JAN.20.2023

BW	Sep4	Dec29	365 Adj
100	945	1430	

CE	BW	WW	YW	MILK	MCE	MWWT
7.9	4.5	75.3	100.0	36.9	6.4	74.5



Plenty of capacity and soft-sidedness in this thick quartered Advantage son that weighs right up with the best of them. These Advantage sired cattle have proven to be great feed converters and the maintenance free type that the ranchers love. His dam has put three other bulls through this sale to Karvonen Land & Cattle, Brian Pfeffer, and Laurencenson Farms.

SBV REPUTATION 707F
S: NUG ADVANTAGE 104J
NUG DANDIE 605D

CHERRY CREEK GLITZ 4D
SUNNY VALLEY RHEA 54C
ANCHOR D IMAX 250Y
NUG TYRA 424B

IPU CLASSIC 1X
D: NUG GOLDIE 282D
NUG POLLY 135A

CHAMPS ROMANO
IPU MS LAREDO 43S
NUG COLORADO 13U
NUG POLLY 465P

17

NUG LANCE 47LDILUTER FREE • POLLED FB
NUG 47L • P1434821 • JAN.15.2023

BW	Sep4	Dec29	365 Adj
96	822	1380	1477

CE	BW	WW	YW	MILK	MCE	MWWT
4.0	6.5	79.6	112.6	37.3	-0.4	77.1



SBV REPUTATION 707F
S: NUG ADVANTAGE 104J
NUG DANDIE 605D

VIRGINIA PAYDIRT 44E
D: NUG JACEK 18G
NUG PURDY 102Z

CHERRY CREEK GLITZ 4D
SUNNY VALLEY RHEA 54C
ANCHOR D IMAX 250Y
NUG TYRA 424B
DOUBLE BAR D BANKER
BROCK XAMPLE
NUG ALBERT 47L
NUG MISS 838U



Sire of Lot 16-19

Lance's sire Advantage was used in a handful of herds and we have heard nothing but positive comments. The Advantage sired cattle are all long spined and carry that extra rib shape and soft sidedness that we like to see in the beef industry. However, the best part is they all come polled while not sacrificing performance. We have a nice set of Advantage replacements that are heavy haired and solid colored just like this guy. Lance's dam herself is a powerful cherry red Paydirt female that is full of muscle and an easy milking square udder. Take a look at this bull sale day he has a lot to offer.

18

NUG FOREMAN 5LHETERO POLLED • DILUTER FREE • POLLED FB
NUG 5L • PT1434626 • JAN.1.2023

BW	Sep4	Dec29	365 Adj
97	1020	1590	1611

CE	BW	WW	YW	MILK	MCE	MWWT
6.4	6.2	84.3	125.0	36.0	3.3	78.2



SBV REPUTATION 707F
S: NUG ADVANTAGE 104J
NUG DANDIE 605D

STARWEST TOTAL VALUE
D: NUG KRYSTAL 675D
NUG CHIQUITA 275T

CHERRY CREEK GLITZ 4D
SUNNY VALLEY RHEA 54C
ANCHOR D IMAX 250Y
NUG TYRA 424B
DOUBLE BAR D SPITFIRE 20X
PHS POLLED WINFALL 27W
GIDSCO APPOLLO 3F
NEW TREND SASSY 6K



Full Sib to Lot 18

A heavy weight in the fullblood division and one you really have to admire for his length of spine, thick quarter, and soft made profile. Foreman's sire Advantage needs no introduction and his dam NUG 675D is one who we think checks all the boxes. She is as perfect uddered and square footed as they come and always out-produces herself come fall time for being such a moderate framed and feminine made cow. She has raised herd-sires for DC farming, Nickel Farms, and Ron & Jill Symes. Foreman is also flushmate to our fullblood consignment at FNL who sold to Robb farms and the

other flushmate is in our replacement pen that we are equally excited to get into production. We truly believe in the consistency of Foreman's dam 675D. Her natural calf 132L is also in the sale and the females she has put back into the herd are a true testament of that. A very exciting combination here of maternal power and performance in a polled package and one with an absolute dog quite disposition.

19

NUG SYNERGY 55LHETERO POLLED • DILUTER FREE • POLLED FB
NUG 55L • P1434842 • JAN.16.2023

BW	Sep4	Dec29	365 Adj
90	870	1300	1356

CE	BW	WW	YW	MILK	MCE	MWWT
9.1	5.0	75.3	106.9	34.1	5.6	71.8



Here is another really neat moderate birth-weight Advantage son out of a beautiful uddered young Inscription cow. Again the test of time has created a proven pedigree here that will leave you some awesome replacement females. The quality and consistency of these polled Advantage sons are making fullblood cattle even more rancher friendly. 55L has so much versatility whether you want to use him on young or old cows no matter their color. Imagine the set of blazed face calves or replacement heifers he will produce.

SBV REPUTATION 707F
S: NUG ADVANTAGE 104J
NUG DANDIE 605D

LFE INSCRIPTION 570E
D: NUG BRITNEY 43G
NUG WENDY 665D

CHERRY CREEK GLITZ 4D
SUNNY VALLEY RHEA 54C
ANCHOR D IMAX 250Y
NUG TYRA 424B

ANCHOR "T" LEGEND 7H
SUNNY VALLEY RHEA 54C
BAR KR AVALANCHE 52X
NUG JUDY 26X

20

NUG LAWSON 10LHORNED FB
NUG 10L • 1432904 • JAN.4.2023

BW	Sep4	Dec29	365 Adj
91	830	1285	1308

CE	BW	WW	YW	MILK	MCE	MWWT
8.9	2.9	56.1	81.9	39.1	2.8	67.2

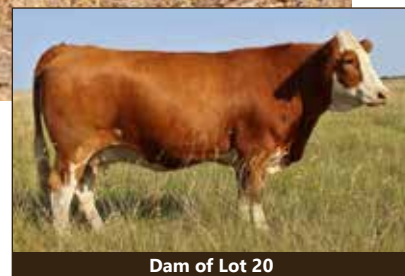


The Reputation sired cattle are very consistent in their type. High sellers at the bull sales and top-quality replacement females that have the look and presence which can't be missed. 10L is a heavy haired bull who has a little extra length and pattern, with a thick hind quarter, and a nice disposition. Another maternally driven bull mothered by one of those productive Imax females that is backed by some very highly productive cow families on both sides of the pedigree.

CHERRY CREEK GLITZ 4D
S: SBV REPUTATION 707F
SUNNY VALLEY RHEA 54C

ANCHOR D IMAX 250Y
D: NUG DANDIE 605D
NUG TYRA 424B

FGAF MAGNUM 901Z
BEE GLITTER 329A
CHAMPS BRAVO
SUNNY VALLEY RHEA 61X
HEMR SAMURAI 7S
DORA LEE ELEXIS
ANCHOR "T" RUSTY 59G
NUG NICKEY 92L



Dam of Lot 20

21

NUG LUKE 50L

HORNED FB

NUG 50L • 1434824 • JAN.16.2023

BW	Sep4	Dec29	365 Adj
102	810	1300	1370

CE	BW	WW	YW	MILK	MCE	MWWT
5.1	4.4	61.3	88.0	35.4	-0.4	66.1



CHERRY CREEK GLITZ 4D
S: SBV REPUTATION 707F
 SUNNY VALLEY RHEA 54C

FGAF MAGNUM 901Z
 BEE GLITTER 329A
 CHAMPS BRAVO
 SUNNY VALLEY RHEA 61X

ANCHOR D IMAX 250Y
D: NUG MISS 42E
 NUG JENELLE 183C

HEMR SAMURAI 7S
 DORA LEE ELEXIS
 BAR KR AVALANCHE 52X
 NUG PURDY 102Z

Dark cherry red and goggled eyed fullblood that has as much top and quarter as any of them. With his beautiful haircoat and soggy makeup he should sire a great group of calves that share his thickness and color. He goes back to another one of those awesome lmax females that are all so clean uddered and consistent producers. Another fullblood bull that will get the job done for any herd.



Sire of Lots 20-22

22

NUG LOGAN 8L

DILUTER FREE • HORNED FB

NUG 8L • T1434746 • JAN.3.2023

BW	Sep4	Dec29	365 Adj
99	886	1360	1385

CE	BW	WW	YW	MILK	MCE	MWWT
1.6	4.2	73.3	113.7	38.7	0.1	75.4



CHERRY CREEK GLITZ 4D
S: SBV REPUTATION 707F
 SUNNY VALLEY RHEA 54C

FGAF MAGNUM 901Z
 BEE GLITTER 329A
 CHAMPS BRAVO
 SUNNY VALLEY RHEA 61X

SHAWACRES JAHARI 50L
D: NUG MISS 416B
 NUG MIRA 552R

BHR DOORN G629E
 MISS SHAWACRES HEIDI 1H
 GIDSCO APPOLLO 3F
 SOUTH-HOLDEN MIRA 27M

A smooth made diluter free reputation son with calving ease and performance combined in his pedigree. 8L's dam catches the attention of most visitors to the form for her overall volume and mass. Lots of dark red pigmentation on both sides of the pedigree here. A bull that should sire highly productive replacement females.

23

NUG LOCKWOOD 138L

DILUTER FREE • HORNED FB

NUG 138L • 1436215 • FEB.10.2023

BW	Sep4	Dec29	365 Adj
95	745	1390	1589

CE	BW	WW	YW	MILK	MCE	MWWT
4.8	4.8	76.4	104.4	35.2	4.1	73.4



KUNTZ DURAMAX 12D
S: SKYWEST FUSION
 SKYWEST CHARLOTTE

SOUTHSEVEN MR ADONIS 96Z
 KUNTZ MISS MOSES 03X
 VIRGINIA AUGUSTUS 180A
 BROCK RAGTIME

NUG TOBY 219U
D: NUG SUGAR 53Z
 NUG MISS 797T

GIDSCO APPOLLO 3F
 NUG KIM 626S
 NUG RANGER 168R
 NUG PEARL 426P

Our lone Fusion son who has sired many sale bulls in the past. Check out the adjusted weights on this younger bull which come as no surprise as he has muscle where it counts; long spined, wide topped, and deep quartered. Lockwood comes from a very productive cow family with some of our most big and broody deep sided cows. His dam has three daughters in our herd and produced herd

sires for Austin Prior, Clinton Dukewich, and Sandgrass Ranch. A bull here that puts it together nicely.



Sire of Lot 23

24

NUG HUGHES 46LDILUTER FREE • HORNED FB
NUG 46L • 1434816 • JAN.15.2023

BW	Sep4	Dec29	365 Adj
99	840	1280	1330

CE	BW	WW	YW	MILK	MCE	MWWT
6.3	5.2	73.6	104.9	32.2	5.3	69.0



Another stout made fullblood bull that will add length and pigmentation to his progeny. Heavily colored, very stylish, and easy moving. He is the rancher type that will go out and cover a solid group of females for you. The quality and consistency in this group of fullblood bulls will be well worth the drive to Camrose. Another diluter free bull that can be utilized in a variety of ways no matter the color of your cow herd.



Sire of Lots 24-25

VIRGINIA PRECISION 16C
S: ANCHOR D OUTLOOK
ANCHOR D Kael 255C

VIRGINIA RADISON 5Z
BROCK YODA
FGAF BARBOSSA 707X
ANCHOR D RUBY RED 198A

JNR'S PHILOSOPHY
D: NUG TRACY 623D
NUG CINNOMINN 433B

JNR'S SALTON
KEATO MS TAJSA 72T FF
SOUTHSEVEN ZORRO 49Z
NUG MIRA 947W

25

NUG LAMBERT 19LHORNED FB
NUG 19L • 1433051 • JAN.5.2023

BW	Sep4	Dec29	365 Adj
83	840	1280	1350

CE	BW	WW	YW	MILK	MCE	MWWT
8.6	5.1	75.1	111.9	34.2	4.8	71.8



Big topped, long bodied, square hipped, and from a productive young cow. Lambert has calving ease and performance wrapped up in one package. His sire Outlook produces nicely pigmented moderate birthweight calves that weigh up very well in the fall. Again, a very strong trouble-free cow family here with very tidy udders that go out a get it done year after year.

VIRGINIA PRECISION 16C
S: ANCHOR D OUTLOOK
ANCHOR D Kael 255C

VIRGINIA RADISON 5Z
BROCK YODA
FGAF BARBOSSA 707X
ANCHOR D RUBY RED 198A

ANCHOR "T" IMPACT 2H
D: NUG IMPRESSION 54H
NUG MISS 462B

ANCHOR "T" METRO 4E
ANCHOR "T" HELGA 10Y
STARWEST TOTAL VALUE
NUG TERAN 738T

26

NUG LANDON 14LDILUTER FREE • HORNED FB
NUG 14L • 1433009 • JAN.4.2023

BW	Sep4	Dec29	365 Adj
86	714	1210	1334

CE	BW	WW	YW	MILK	MCE	MWWT
10.5	1.6	59.9	80.4	33.5	7.1	63.5



We still use 14L's sire Imax heavily on our heifers and does he ever calve easy. Small at birth, lots of pigmentation, some are polled, and still go out and perform well for a calving ease bull. I really can not say enough about how well these Imax mothers have done throughout the breed. They are so feminine, clean uddered, and most importantly produce so well. Landon's dam was one of our favourite replacement heifers which is of no surprise as she is backed by a very productive cow family.



Maternal Granddam of Lot 26

HEMR SAMURAI 7S
S: ANCHOR D IMAX 250Y
DORA LEE ELEXIS

ANCHOR "T" IKON 1H
JB CDN KANANASKIS 4019
DORA LEE JAKE
DORA LEE ELECTRA

BAR KR AVALANCHE 52X
D: NUG JORDYN 203J
NUG KRYSTAL 675D

BAR 5 SA HARRACH 801P
BAR KR MS RUSTY 68N
STARWEST TOTAL VALUE
NUG CHIQUITA 275T

27

NUG EXCEL 44L

HOMO POLLED • PB

NUG 44L • PTG1434820 • JAN.14.2023

BW	Sep4	Dec29	365 Adj
98	890	1385	1440

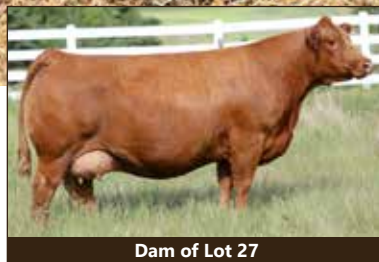
CE	BW	WW	YW	MILK	MCE	MWWT
10.5	2.2	88.3	125.0	23.9	8.6	68.1



SVS TYCOON 841F
S: SVS RANCHER 42H
 HLTS SAMMIE

R PLUS RELOAD 2006Z
D: WFL RED SAGE 506C
 WFL RED SAGE 1003Y

SVS BROOKS 669D
 SVS RED ANNIE 411B
 WS BEEF KING W107
 BRANT DONT YA LOVE ME
 R PLUS HARD ROCK 145X
 IPU RED BARONESS 1T
 R PLUS REDGE 8018U
 3D MISS SAGE 140 W



Dam of Lot 27

A true sale feature here. Super stout, hairy, plenty of performance, and a highly maternal pedigree with an awesome set of numbers. His pedigree is full of the most highly proven cow families in the Simmental breed that would fill a page with their high selling sons and daughters. Excel has always had that extra mass and herd-bull presence to bring him to the top of the pen. A bull that is so complete and checks all the boxes. His sister is the boys favourite in the replacement pen and was also by many at Farmfair. There really isn't much more to say here and he will be worth the drive for you to analyze yourself.

28

NUG SHERWOOD 74L

HOMO POLLED • PB

NUG 74L • PG1434910 • JAN.21.2023

BW	Sep4	Dec29	365 Adj
112	960	1510	1611

CE	BW	WW	YW	MILK	MCE	MWWT
5.8	7.0	109.7	160.4	25.5	5.0	80.4



SVS TYCOON 841F
S: SVS RANCHER 42H
 HLTS SAMMIE

MRL PRECISION 143E
D: NUG FIREFLY 131G
 MECK FIREFLY 76Z

SVS BROOKS 669D
 SVS RED ANNIE 411B
 WS BEEF KING W107
 BRANT DONT YA LOVE ME
 MRL CAPONE 130B
 MRL MISS 2435Z
 LBR CROCKET R81
 MECK JASMINE 816U



Maternal Sib to Lot 28

A high performing Rancher son here with the numbers to back him up. Long bodied, extremely thick topped, and comes with style and balance. A clean made bull with amble bone and nice big feet. His dam was the mother of our lot 1 Landmark heifer from this year's female sale who was admired by many and sold to Robb Farms.

29

NUG LEGACY 43LHOMO POLLED • PB
NUG 43L • PTG1434818 • JAN.14.2023

BW	Sep4	Dec29	365 Adj
102	888	1315	1358

CE	BW	WW	YW	MILK	MCE	MWWT
7.2	5.6	100.1	148.8	29.0	4.5	79.1



Another headliner Rancher son from a stacked pedigree. A super stout performance orientated beef bull that is impressive no matter which way you analyze him. He is slightly more moderate made than his brother but is fault free and remarkable for his type. His dam ETZ 319B would be one of the farm favourites in the red division and had only given us daughters in her early years which have all turned out to be fall sale features except for 129H which we retained and is already putting sons through the sale. The last two years she has raised herd sires for Blair Anderson and David Mohr as well as Hays Land & Cattle some very astute cattlemen. We flushed her to Rancher and got 43L and 49L as well as 4 excellent replacement heifers that are equally as consistent in quality and type.

SVS TYCOON 841F
S: SVS RANCHER 42H
HLTS SAMMIE

KOP WALKERSON 136Z
D: SKORS KATIE 319B
SKORS MS RED KATE 112U

SVS BROOKS 669D
SVS RED ANNIE 411B
WS BEEF KING W107
BRANT DONT YA LOVE ME
TWIN-CHIEF WALKER 21W
KOP MS BENGIE 6P
REMINGTON RED LABEL HR
SKORS MS KNIGHT 187S



Sire of Lots 27-31

30

NUG MENTO 49LHETERO POLLED • PB
NUG 49L • PTG1434825 • JAN.16.2023

BW	Sep4	Dec29	365 Adj
104	1080	1600	1656

CE	BW	WW	YW	MILK	MCE	MWWT
4.9	6.7	111.2	163.1	29.0	3.1	84.6

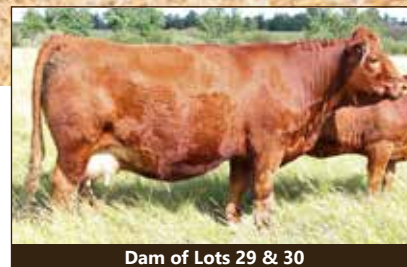


Here is the heaviest bull at weaning and yearling and one that proves that length weighs. Long as a freight train, thick quartered, tons of hair, and plenty of testicular development has given him that herd bull look from a young age. Think of the pay weight and dressing percentage the steers off this guy will have. Both him and his full brother are extremely well put together bulls out of one of our most productive cows. Take a look at 43L's footnotes to see what their cornerstone dam 319B has accomplished for us.

SVS TYCOON 841F
S: SVS RANCHER 42H
HLTS SAMMIE

KOP WALKERSON 136Z
D: SKORS KATIE 319B
SKORS MS RED KATE 112U

SVS BROOKS 669D
SVS RED ANNIE 411B
WS BEEF KING W107
BRANT DONT YA LOVE ME
TWIN-CHIEF WALKER 21W
KOP MS BENGIE 6P
REMINGTON RED LABEL HR
SKORS MS KNIGHT 187S



Dam of Lots 29 & 30

31

NUG FLOLAUR 18L

HOMO POLLED PB

NUG 18L • PG1433110 • JAN.6.2023

BW	Sep4	Dec29	365 Adj
89	994	1410	1403

CE	BW	WW	YW	MILK	MCE	MWWT
9.4	3.4	104.9	153.9	23.9	4.8	76.4



Dark red hairy dude that lays down a really solid set of EPD's across the board. 18L's dam is an extremely tanky and sound footed blazed face cow that goes back to the 119X cow family who has left her mark on our herd. 119X has put 5 bulls through this sale and two females topping our female sale to XRC Simmentals and Virginia Ranch. Solid genetics here sired by the popular Rancher bull.

SVS TYCOON 841F
S: SVS RANCHER 42H
HLTS SAMMIE

SVS BROOKS 669D
SVS RED ANNIE 411B
WS BEEF KING W107
BRANT DONT YA LOVE ME

WFL WESTCOTT 24C
D: NUG PEARL 103F
NUG MISS 119X

TNT 90 PROOF Z401
WFL SWEET LICIOUS 1044X
IPU 52N ACCELERATOR 222U
NUG NECTAR 204M

32

NUG LEWIS 142L

HOMO POLLED PB

NUG 142L • PG1436270 • FEB.11.2023

BW	Sep4	Dec29	365 Adj
93	765	1335	1541

CE	BW	WW	YW	MILK	MCE	MWWT
8.0	3.7	81.0	127.0	28.8	5.4	69.3



We really like this bull for his overall makeup. Another 107H son with that herd bull character. For a younger bull this guy displays a lot of natural mass and thickness. We expect Lewis's strength will be the quality of his daughters for their size, composition, and added longevity. Try to find a bull with cornerstone females for so many different breeders like Sage 506C, Erixon Lady 75B,

KWA Ms Rock 14X, and MBJ Brooke 68Z. The guess work is done here.



Maternal Granddam of Lot 32

SVS BETTS 808F
S: ERIXON LAD 107H
ERIXON LADY 75B

BGS/BM CAPTAIN SCREAM 63D
WFL RED SAGE 506C
ERIXON TOP SHELF 77Y
ERIXON LADY 90U

KWA LAW MAKER 59C
D: NUG SCARLETT 33H
SPRINGCREEK BROOKE 68Z

CDI AUTHORITY 77X
KWA MS ROCK 14X
KOP CROSBY 137W
SPRINGCREEK BROOKE 11W

33

NUG LINDGREN 103L

HOMO POLLED • PB

NUG 103L • PG1436115 • JAN.28.2023

BW	Sep4	Dec29	365 Adj
93	945	1440	1538

CE	BW	WW	YW	MILK	MCE	MWWT
5.3	5.3	99.8	150.6	25.9	3.1	75.8



A stretchy long bodied bull with some extra performance that was at the top of the group for weaning and yearling weights. His dam is a performance orientated Westcott cow with a nicely balanced square udder. She has raised a nice replacement heifer for the Mark Biggs Family. Another bull who has a lot to offer the beef industry.

SVS BETTS 808F
S: ERIXON LAD 107H
ERIXON LADY 75B

BGS/BM CAPTAIN SCREAM 63D
WFL RED SAGE 506C
ERIXON TOP SHELF 77Y
ERIXON LADY 90U

WFL WESTCOTT 24C
D: NUG AMBER 68E
BERWEST AMBER 236Z

TNT 90 PROOF Z401
WFL SWEET LICIOUS 1044X
SKORS CROCKET 252X
BERWEST WILLOW 908W

34

NUG LATIMER 98LHETERO POLLED • PB
NUG 98L • PG1435904 • JAN.26.2023

BW Sep4 Dec29 365 Adj

92 838 1295 1388

CE BW WW YW MILK MCE MWWT

8.2 3.8 80.6 123.9 23.4 5.3 63.7



Pictures are worth a 1,000 words and this guy is just like his picture. He is easy on the eyes with his dark red, hairy, and long bodied profile. I really like the way this guy patterns because of his softness and easy going disposition. Latimer has a strong cow family behind him and his blood red Spring Lake dam has raised bulls for Travis Ailsby, Hays Land & Cattle, Brad Paulgaard and we have two daughters in the herd. Ranch bull deluxe here.



Sire of Lots 32-43

SVS BETTS 808F
S: ERIXON LAD 107H
ERIXON LADY 75BKHG ELCTRIC RED 105U
D: ZSL MISS ELECTRIC 22
ZSL MS LABEL 707SBGS/BM CAPTAIN SCREAM 63D
WFL RED SAGE 506C
ERIXON TOP SHELF 77Y
ERIXON LADY 90UNCB RED SUSPECT 30S
KHG NANCY 7P
REMINGTON RED LABEL HR
ZSL MS MANHATTAN 201P

35

NUG AXIAL 108LHOMO POLLED • PB
NUG 108L • PG1436120 • JAN.30.2023

BW Sep4 Dec29 365 Adj

85 770 1340 1487

CE BW WW YW MILK MCE MWWT

6.8 3.6 85.2 126.4 27.7 4.6 70.3



Another Erixon 107H son that fits the mould of is brothers. You really could use the same footnote for them all because of his consistency; length, depth, square hiped, strong feet and legs, and about as dark red as you can make them. His young dam comes from a very productive cow family that are peas in a pod. She raised a sale feature bred heifer this fall to Sather Simmentals. With the consistence in type and presence of these 107H bulls your bull shopping will be easy.

SVS BETTS 808F
S: ERIXON LAD 107H
ERIXON LADY 75BWS BEEF MAKER R13
D: NUG JEWEL 15G
NUG SIENA 14EBGS/BM CAPTAIN SCREAM 63D
WFL RED SAGE 506C
ERIXON TOP SHELF 77Y
ERIXON LADY 90UHOOKS SHEAR FORCE 38K
DCR MS RIBEYE N72
MAF RATTLER 23C
NUG CLOVER 485B

36

NUG LUKE 121L

HOMO POLLED • PB

NUG 121L • PG1435981 • FEB.3.2023

BW	Sep4	Dec29	365 Adj
104	820	1330	1461

CE	BW	WW	YW	MILK	MCE	MWWT
4.9	5.7	84.2	123.8	24.7	5.8	66.8



If you want a bull out of a dark red big deep bodied and sound footed cow take a look at this guy. Heavy haired with an attractive head and smooth stylish profile. His sire 107H is one of the largest sire groups in the sale and the quality runs deep. I feel like I am repeating myself, they are ideally framed, super stout, and that extra top, width, and hair to compliment your cow herd.

SVS BETTS 808F
S: ERIXON LAD 107H
 ERIXON LADY 75B

BGS/BM CAPTAIN SCREAM 63D
 WFL RED SAGE 506C
 ERIXON TOP SHELF 77Y
 ERIXON LADY 90U

KOP CROSBY 137W
D: NUG DIANNA 89F
 NUG PAPIKA 20Y

MUIRHEAD LIVE WIRE 95R
 KOP MS BENGIE 6P
 MRL RED FORCE 12U
 NUG SHIRAZ 942W

37

NUG LARSON 83L

HOMO POLLED • PB

NUG 83L • PG1435406 • JAN.23.2023

BW	Sep4	Dec29	365 Adj
102	830	1300	1381

CE	BW	WW	YW	MILK	MCE	MWWT
5.3	5.3	78.1	117.2	20.1	3.5	59.2



Deep sided attractive bull that is very similar in type as the other Erixon sons. Lots of length, smooth bodied, thick and meaty, and structurally very sound. The Brad Paulgaard family purchased a sale highlight off this cow a few years back. They have a very impressive bull battery and a top-notch cow herd.

SVS BETTS 808F
S: ERIXON LAD 107H
 ERIXON LADY 75B

BGS/BM CAPTAIN SCREAM 63D
 WFL RED SAGE 506C
 ERIXON TOP SHELF 77Y
 ERIXON LADY 90U

WFL MR WESTWAY 7B
D: NUG MARISSA 113F
 MAF POCAHONTAS 164B

R PLUS RELOAD 2006Z
 WFL BLACK NELL 1062X
 SPRINGCREEK LINER 56U
 IPU 52N POCAHONTAS 215U

38

NUG AVENGER 69L

HETERO POLLED • PB

NUG 69L • PG1434905 • JAN.20.2023

BW	Sep4	Dec29	365 Adj
104	826	1320	1412

CE	BW	WW	YW	MILK	MCE	MWWT
3.1	6.9	90.6	135.4	20.9	1.6	66.2



Aveneger is a bull that will add substance to your cattle. Soggy, stout made, in a well-balanced package and moves around the pen so freely. Another deep deep red 107H son that only helps the pen. Avenger's dam is an exceptionally deep bodied easy doing Westcott cow that requires no extra groceries. This guy will have a lot of admirers sale day.

SVS BETTS 808F
S: ERIXON LAD 107H
 ERIXON LADY 75B

BGS/BM CAPTAIN SCREAM 63D
 WFL RED SAGE 506C
 ERIXON TOP SHELF 77Y
 ERIXON LADY 90U

WFL WESTCOTT 24C
D: NUG CORAL 87G
 NUG DARLA 664D

TNT 90 PROOF Z401
 WFL SWEET LICIOUS 1044X
 SVS CAPTAIN MORGAN 11Z
 SKORS DREAM 103W

39

NUG LIAM 31L

HOMO POLLED • PB

NUG 31L • PG1434742 • JAN.12.2023

BW Sep4 Dec29 365 Adj

94 860 1310 1350

CE BW WW YW MILK MCE MWWT

8.6 3.0 77.9 118.7 21.6 4.6 60.6



Moderate framed, deep bodied, thick and meaty individual that always catches your eye in the bull pen. We bought into 31L's sire with Kyle Westman who was a crowd favourite and high seller at the Erixon bull sale in 2022. These Erixon sired calves are easy to pick out in the pen with their dark heavy hair and natural fleshing ability just like their dad. Liam's dam has produced herd sires for Tony Rustemeier, Randy Geisler, and the Trenerry family.

SVS BETTS 808F
S: ERIXON LAD 107H
ERIXON LADY 75B

BGS/BM CAPTAIN SCREAM 63D
WFL RED SAGE 506C
ERIXON TOP SHELF 77Y
ERIXON LADY 90U

WFL ABSOLUTE 51Y
D: NUG SASHA 531C
NUG STARDOM 70A

LFE STRAIT UP 454W
WFL MS BLACK FLASH 8068U
LMF MOVIN FORWARD
NUG MISS 63X

40

NUG LAYNE 57L

HETERO POLLED • PB

NUG 57L • PG1434847 • JAN.17.2023

BW Sep4 Dec29 365 Adj

110 810 1330 1420

CE BW WW YW MILK MCE MWWT

3.7 6.4 75.8 113.8 23.4 5.5 61.3



If you like your calves dark, dark red this guy will help the cause as his sire and dam are as dark colored as you can make them. Long bodied, clean made, lots of quarter, and wide topped. Again, I can't say enough about the consistency of these Erixon 107H sons. He bred so true that I think almost all his sons made it into the sale and the daughters off him look very good also.

SVS BETTS 808F
S: ERIXON LAD 107H
ERIXON LADY 75B

BGS/BM CAPTAIN SCREAM 63D
WFL RED SAGE 506C
ERIXON TOP SHELF 77Y
ERIXON LADY 90U

LCHMN BODYBUILDER 7303F
D: NUG AVALINE 470B
MECK JASMINE 816U

3C WALLY C240 BLK
LSF MOMENTO D8
TNT GUNNER N208
MECK NANCY 357N

41

NUG LAGER 140L

HOMO POLLED • PB

NUG 140L • PG1436221 • FEB.10.2023

BW Sep4 Dec29 365 Adj

96 770 1305 1478

CE BW WW YW MILK MCE MWWT

6.9 3.9 84.8 127.5 22.6 5.3 65.0



Dark red, stout made, and complete from every angle. If we had to rank bulls by productive cow families, this guy would be near the top. He has awesome mothers sprinkled throughout his pedigree. You really will be impressed by these Erixon 107H sons. They are so consistently put together and high-quality beef bulls. Long-time bull customer Glenholm farms have a son from this guy's young dam.



Maternal Granddam of Lot 41

SVS BETTS 808F
S: ERIXON LAD 107H
ERIXON LADY 75B

BGS/BM CAPTAIN SCREAM 63D
WFL RED SAGE 506C
ERIXON TOP SHELF 77Y
ERIXON LADY 90U

NUG ELIE 314E
D: NUG PARFAIT 25G
NUG FANCY 417B

SVS MATRIX 530C
NUG JENNY 87Y
SVS CAPTAIN MORGAN 11Z
NUG TERRA 1Z

42

NUG LINDROS 99LHOMO POLLED • PB
NUG 99L • PG1435906 • JAN.27.2023

BW	Sep4	Dec29	365 Adj
92	825	1330	1437

CE	BW	WW	YW	MILK	MCE	MWWT
6.6	4.1	78.6	115.9	20.9	5.2	60.2



A real eye catching long bodied blaze face bull here. 99L has that extra volume, thickness, and haircoat that his sire passes on. Erixon 107H has so many good things to offer and he really puts a stamp on his progeny. This guy will have many admirers sale day and is one who will sire both males and females with the high quality Simmental breed characteristics. Mcmillan Ranching has a daughter of 555C and Craig Heck has a son.

SVS BETTS 808F
S: ERIXON LAD 107H
ERIXON LADY 75B

NUG ROYAL RED 324A
D: NUG PRIMROSE 555C
MECK JASMINE 816U

BGS/BM CAPTAIN SCREAM 63D
WFL RED SAGE 506C
ERIXON TOP SHELF 77Y
ERIXON LADY 90U

LFE BLACK LAKOTA 385W
TRIPLE C SMARTY PANTS R
TNT GUNNER N208
MECK NANCY 357N



Erixon Lady 75B
Granddam of Lots 32-43

43

NUG LOGAN 162LHETERO POLLED • PB
NUG 162L • PG1438893 • FEB.24.2023

BW	Sep4	Dec29	365 Adj
102	800	1315	1520

CE	BW	WW	YW	MILK	MCE	MWWT
5.4	5.6	90.9	133.9	22.9	5.6	68.4



The youngest red bull and one that should not be overlooked sale day. His performance weights fit right in with the rest of his pen mates, and he really is a big dark red meat machine. With his natural shape and style 162L has a lot of potential and should create tremendous value for his new owner. Mothered by a solid Red Whiskey cow he will make a perfect ranchers bull.

SVS BETTS 808F
S: ERIXON LAD 107H
ERIXON LADY 75B

MRL RED WHISKEY 101B
D: NUG FUSCHIA 65F
SUN STAR TERRA 4X

BGS/BM CAPTAIN SCREAM 63D
WFL RED SAGE 506C
ERIXON TOP SHELF 77Y
ERIXON LADY 90U

TNT BOOTLEGGGER Z268
MRL MISS 677Y
PATT FIRST BASE 30F
SUN STAR MS BOLD GUN 23U

44

NUG DUNLOP 11L

HOMO POLLED • PB

NUG 11L • PG1432908 • JAN.3.2023

BW Sep4 Dec29 365 Adj

89 870 1350 1371

CE BW WW YW MILK MCE MWWT

7.5 3.4 80.8 119.2 24.3 4.4 64.7



WS BEEF KING W107
S: NUG LANDMARK 310G
 MISS CAMDEN 53E

WFL MR WESTWAY 7B
D: NUG ROCK 130F
 BLCC MISS RED ROCK 28C

WS BEEF MAKER R13
 WS MISS DREAMBOAT T17
 WFL MR WESTWAY 6C
 MISS CAMDEN 90B
 R PLUS RELOAD 2006Z
 WFL BLACK NELL 1062X
 KWA RED ROCK 5T
 KOP MS WALKER 142A



Full Sib to Lot 44

Don't have to say much here just take a look at this guy's picture. A feature herdbull with a ton of potential. A full brother to this guy was a high seller in 2022 to Rocky Meadow Ranch who have given us all positive comments on his performance. We like this mating so much we kept breeding his dam the same way and she just gave us a heifer calf the other morning. All three full siblings have come with a moderate birthweight. Both Dunlop and his brother are cherry red with poker straight hair and as square made as you can get in a moderate package. His dam is a Red Rock x Reload combination who are the sires of some of the most

prolific red cows in the Simmental breed. Dunlop's sire Landmark has bred beyond our expectations and his daughters topped the Classic sale this fall. Here is a bull that can be used in a number of different ways and you will not be disappointed in his offspring whether it is a bull or heifer. Make sure you look this guy up sale day.

45

NUG VIEWFIELD 68L

HOMO POLLED • PB

NUG 68L • PG1434904 • JAN.20.2023

BW Sep4 Dec29 365 Adj

100 885 1410 1500

CE BW WW YW MILK MCE MWWT

3.4 5.7 89.9 126.7 27.4 5.4 72.4



WS BEEF KING W107
S: NUG LANDMARK 310G
 MISS CAMDEN 53E

KOP CROSBY 137W
D: NUG BRUNET 6Y
 NUG MISS 340N

WS BEEF MAKER R13
 WS MISS DREAMBOAT T17
 WFL MR WESTWAY 6C
 MISS CAMDEN 90B
 MUIRHEAD LIVE WIRE 95R
 KOP MS BENGIE 6P
 KLONDIKE ARNIE GNM 250Z
 MSS HOPE 30H



Dam of lot 45

A red blazed face bull with lots of substance, herdbull character, and longevity to no end. His 13 year old Crosby dam has put multiple high sellers through this sale as well as some very productive daughters back into the herd. It only stands to reason with the high quality maternal greats in her pedigree. We really like the Landmark sired cattle who have been so consistent in type and quality. His son and daughters have both performed very well. We will continue to use him heavily for his ability to sire bulls like this.

46

NUG LARRY 95L

HOMO POLLED • 7/8

NUG 95L • PRS1435468 • JAN.25.2023

BW	Sep4	Dec29	365 Adj
93	815	1260	1342

CE	BW	WW	YW	MILK	MCE	MWWT
9.8	2.9	84.1	127.4	28.8	8.3	70.9



Blood red, smooth made, and long spined. 95L is clean headed and smooth shouldered with lots of calving ease in his pedigree. A solid set of numbers again from a highly productive and proven cow family. Wills Land & Cattle and Rocking Heart Range both have sons from 37F.



Sire of Lot 46

CDI ABUNDANCE 391C
S: LCDR AMERICAN RED 99E
 HSF RED FORTUNES SIS 33

CDI HOMETOWN 246A
 CDI MS BEEF KING 74Z
 SRS FORTUNE 500
 BOZ MISS C397

MRL RED WHISKEY 101B
D: NUG ELECTRA 37F
 MECK MISS 19X

TNT BOOTLEGGER Z268
 MRL MISS 677Y
 THSF FREEDOM 300N
 MECK JASMINE 816U

47

NUG THUNDER 101L

HOMO POLLED • PB

NUG 101L • PG1435910 • JAN.27.2023

BW	Sep4	Dec29	365 Adj
96	872	1400	1508

CE	BW	WW	YW	MILK	MCE	MWWT
9.3	3.4	84.4	123.9	23.3	4.7	65.5



MRL RED WHISKEY 101B
S: SVS BROOKS 669D
 SVS RED SARA 92X

WFL WESTCOTT 24C
D: NUG KATRINA 67F
 NUG KAMMILLA 547C

TNT BOOTLEGGER Z268
 MRL MISS 677Y
 SUNNY VALLEY UP-ROAR 90U
 3D MISS SARA 158U
 TNT 90 PROOF Z401
 WFL SWEET LICIOUS 1044X
 NUG ROYAL RED 324A
 NUG MISS 68X

A heavy muscled tank of a bull with plenty of thickness, bold ribbed, and stylish conformation. His dam 67F has been a favourite Westcott dam of ours. She raised a bull for Dean Scammel and one of her daughters just calved yesterday morning with a beautiful udder. Lots of capacity throughout this guy's pedigree and one that will make some great mother cows.



Maternal Sib to Lot 47

48

NUG LANDRY 59L

HOMO POLLED • PB

NUG 59L • PG1434875 • JAN.18.2023

BW Sep4 Dec29 365 Adj

99 844 1360 1447

CE BW WW YW MILK MCE MWWT

7.2 5.1 93.1 132.0 18.2 5.2 64.8



A nice blazed face heavy haired herdsire with some length, size, and eye appeal. He comes from a really good Accelerator daughter that in their time were some of the most productive red mother cows on the farm. His dam has produced herd bulls for Jason & Brad Paulgaard as well as Laureceson Farms. We have a couple of daughters retained in the herd and the blaze face and muscle pattern

can be found in all of them. Great sire, great mother, and a very complete bull himself.



Sire of Lot 48 & 49

TNT BOOTLEGGER Z268
S: MRL RED WHISKEY 101B
MRL MISS 677Y

DCR MR MOON SHINE X102
TNT MISS W70
KOP CROSBY 137W
MRL MISS 355T

IPU 52N ACCELERATOR 222U
D: NUG CLAY POT 103Y
NUG MISS 777T

TNT ACCELERATOR S226
IPU RED POCAHONTAS 52N
ANCHOR "T" RUSTY 59G
MRL MISS 330M

49

NUG LANGKOW 84L

HETERO POLLED • PB

NUG 84L • PG1435407 • JAN.23.2023

BW Sep4 Dec29 365 Adj

100 885 1370 1458

CE BW WW YW MILK MCE MWWT

6.1 5.0 87.8 120.6 23.9 7.3 67.8



A well balanced free moving bull with a ton of length and muscle. These single cross bulls come with a blaze and push the scale down. Another bull that will go to work and sire high performing progeny with loads of maternal strength. His sire Red Whiskey breeds so consistent and is the backbone of many of the breed leading red bulls. Lakebend Land & Cattle and Bar JX have herd sires from the 483B cow. Again, both long time bull customers.

TNT BOOTLEGGER Z268
S: MRL RED WHISKEY 101B
MRL MISS 677Y

DCR MR MOON SHINE X102
TNT MISS W70
KOP CROSBY 137W
MRL MISS 355T

IPU CLASSIC 1X
D: NUG MAXEY 483B
MFI BLUTE 6192

CHAMPS ROMANO
IPU MS LAREDO 43S
PRL HOUSTON 005H
ANCHOR "T" BETTINA 7G

HERD HEALTH

Here at Maxwell Simmentals we pride ourselves on having a comprehensive Herd Health program. The cow herd receives an annual dose of Express FP 5/Somnugen which is a modified live vaccine for IBR, PI3, BRSV, BVD types 1 and 2, and Hemophilus somnus. They also receive an 8 way Clostridial vaccine and Scour bos 9 as a protection against scours. The cows receive a dose of Ivermectin Pour On in the fall and will have follow up in the early winter with either Cylence, Clean Up or Boss.

The bull calves will have had three separate doses of modified live respiratory vaccine: they receive Once PMH intranasal shortly after birth, Pyramid 5 Presponse in May/June and again in the fall at weaning. We also administer Toltrazuril capsules to all of the newborn calves as a protection against Coccidiosis. The bull calves have had two doses of a Clostridial vaccine, once before turn out and once at weaning. They have received a dose of Ivermectin Pour on this fall as well as having access to an oiler with lice control product available at all times.

WYATT
HORVEY, B.S.C.
Feed Sales Representative

 **COUNTRY
JUNCTION
FEEDS**

Mobile: 1-780-352-1136 Mill: 1-780-352-9155 Fax: 1-780-352-9114
Email: whorvey@countryjunctionfeeds.com

4707 40th Avenue
Wetaskiwin AB T9A 2B8

www.countryjunctionfeeds.com

50

NUG ROSS 13L

HOMO POLLED • PB

NUG 13L • PG1432918 • JAN.3.2023

BW Sep4 Dec29 365 Adj

99 935 1410 1422

CE BW WW YW MILK MCE MWWT

8.7 4.7 83.5 120.5 30.8 3.2 72.6



An extremely productive outcross pedigree with some breed leading numbers on this blazed face bull. We bred some of our purebred cows to the homo polled Advanatge bull for some outcross pedigrees and this guy is a true testament to the fullblood x purebred Simmental cross that is the backbone of many red commercial herds across the prairies. Ross is extremely sound made and free on the move and should add a little extra milk to his daughters while not sacrificing teat size if that is on your wish list.

SBV REPUTATION 707F
S: NUG ADVANTAGE 104J
 NUG DANDIE 605D

WFL MR WESTWAY 7B
D: NUG RACHEL 26E
 MECK MISS 19Z

CHERRY CREEK GLITZ 4D
 SUNNY VALLEY RHEA 54C
 ANCHOR D IMAX 250Y
 NUG TYRA 424B

R PLUS RELOAD 2006Z
 WFL BLACK NELL 1062X
 WS BEEF MAKER R13
 MECK MISS 113X

51

NUG LINCOLN 9L

HOMO POLLED • PB

NUG 9L • PG1432901 • JAN.3.2023

BW Sep4 Dec29 365 Adj

82 866 1340 1428

CE BW WW YW MILK MCE MWWT

8.8 2.9 72.5 104.6 30.7 6.3 66.9



Mass, length, muscle, and pounds on this neat herdbull prospect. A combination of black and fullblood genetics have produced this stylish red bull with the blaze locked in. Lincoln was a pasture favourite all summer beside his polled Inscription two-year old dam. These Inscription dams have become some of the best producers throughout the breed and you will find him in the pedigree of many of the great ones. A highly maternal outcross pedigree with lots of stoutness and herdbull character that will make him one of the crowd favourites on sale day.

CMS SOCHI 307A
S: R PLUS FLEETWOOD 1012J
 MISS R PLUS 9495G

LFE INSCRIPTION 570E
D: NUG JESSIE 238J
 NUG COPPER 29F

DRAKE POKER FACE 2X
 YR BLK PRIMADONNA 930W
 R PLUS 7141E
 MISS R PLUS 4005B
 ANCHOR "T" LEGEND 7H
 SUNNY VALLEY RHEA 54C
 ANCHOR D IMAX 250Y
 NUG SOPHEY 660D



Sire of Lot 51

52

NUG 125L

HOMO POLLED • PB

NUG 125L • UNREGISTERED • FEB.4.2023

BW Sep4 Dec29 365 Adj

95 830 1315

CE BW WW YW MILK MCE MWWT



If you need registration papers you will want to pass on this bull. However, if you're looking for a high quality blazed face bull from an ideal cow that will add performance, milk, and foot quality, with extra angularity then this is your guy. We have too many cows to keep unregistered progeny but when there was a mix up in papers on a female we purchased we had to make an exception. His dam really is impressive and we thought the same when we seen his sire ZSL Ohtani 7J, a dark red blazed face Sysco son that we purchased a semen pack on.

MRL SYSCO 14D
S: **ZSL MR OHTANI 7J**
ZSL 37C

MRL CAPONE 130B
MRL MISS 76U
KWA BIG TIME 86A
ZSL MS TWIN ICE 125T

D: PUREBRED SIMMENTAL

53

NUG CENTURION 117L

HOMO POLLED • PB

NUG 117L • PG1436159 • FEB.1.2023

BW Sep4 Dec29 365 Adj

110 870 1310 1411

CE BW WW YW MILK MCE MWWT

2.7 7.9 98.4 149.9 18.1 2.9 67.3



Square hipped, soft made, and plenty of herd bull character. His sire Precision makes his progeny dark red, heavy haired, and contain that extra performance. 117L is backed by some tried and true cow families with consistently good udders. 32F has a son at Randy Geisler and H Bar M Land & Cattle- two very excellent cow herds. If you want some low maintenance offspring take a look here.

MRL CAPONE 130B
S: **MRL PRECISION 143E**
MRL MISS 2435Z

TNT BOOTLEGGER Z268
MRL MISS 836W
IPU RED WESTERN 49X
MRL MISS 610U

NUG ULTIMATE 6D
D: **NUG CROCUS 32F**
NUG TRACY 69X

SVS CAPTAIN MORGAN 11Z
NUG PASHMENIA 403P
TNT TOP GUN R244
NUG LENORA 123L

54

NUG PREMIUM 15L

HOMO POLLED • PB

NUG 15L • PG1433024 • JAN.4.2023

BW Sep4 Dec29 365 Adj

76 818 1275 1335

CE BW WW YW MILK MCE MWWT

15.9 -0.7 70.9 106.2 28.8 10.9 64.3



This soft made, deep sided, easy moving bull will get your attention sale day. Plenty of testicular development with great calving ease numbers who should produce those calves that come easy with lots of vigour just like his sire Maverick. We are big believers in cow families and the dam of this bull comes from a pretty darn good one. He stems from the same cow family as 12L in the sale who will

be a lead off for the black section. Premiums dam Brooke 2J was a FNL high seller who we purchased with Duncan Kueber an enthusiastic young cattleman who is being well coached by his grandpa Evan.



Dam of Lot 54

SBSF EASTWOOD 22E
S: **SPRINGCREEK MAVERICK 48H**
SPRINGCREEK RIVAL 127F

CMS SOCHI 307A
SBSF SAHARA 7A
SPRINGCREEK SPARK PLUG
KOP MS RIVAL 61A

SVS BETTS 808F
D: **WBC BROOKE 2J**
JR BROOKE

BGS/BM CAPTAIN SCREAM 63D
WFL RED SAGE 506C
MR HOC BROKER
JR ERICA TOO

55

NUG TITO 17L

HOMO POLLED • PB

NUG 17L • PG1433059 • JAN.5.2023

BW Sep4 Dec29 365 Adj

92 918 1350 1425

CE BW WW YW MILK MCE MWWT

14.3 1.4 81.5 120.6 30.0 7.6 70.8



We think this smooth made and long bodied bull checks a lot of the boxes. He is the right kind who has that extra style and should calve easily all while adding hair and shape to his offspring. He displays some curve bending birth and growth numbers and is backed by an absolute maternally stacked pedigree which might be the most impressive part of this bull. This guy will get some serious attention sale day and the females that he sires will have a serious impact on any herd.

MAR MAC UTAH WHISKY 52E
S: WLB TOP TIER 456G
 WLB 47Y FAE 343E

R PLUS YUMA 9087G
D: NUG BROOKE 248J
 SPRINGCREEK BROOKE 68Z

TNT BOOTLEGGER Z268
 MAR MAC UTAH'S DREAM 79U
 SUNNY VALLEY FORCE 47Y
 WLB 756T TRESSIE 3556B

R PLUS 5015C
 MISS R PLUS 3007A
 KOP CROSBY 137W
 SPRINGCREEK BROOKE 11W



Sire of Lot 55

56

NUG RED RIVER 106L

HOMO POLLED • PB

NUG 106L • PTG1436117 • JAN.29.2023

BW Sep4 Dec29 365 Adj

98 815 1375 1508

CE BW WW YW MILK MCE MWWT

4.5 5.1 78.3 110.0 19.4 1.2 58.6

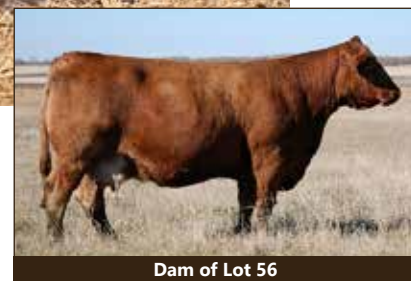


Another pen favourite here that we really like. Bold ribbed with lots of softness, clean lined, and a lot of top and quarter. He has that extra style and presence that is common with all the Brooke 68Z progeny who herself has left a mark on our herd. She has been the dam of many high selling bulls and front pasture females that you could write a book about. Her mating with Walter has created an outcross pedigree and a really neat individual in himself. No guess work here.

MRL BENDER 25F
S: MRL WALTER 47H
 FLYF PEGS POCAHONTAS 720E

KOP CROSBY 137W
D: SPRINGCREEK BROOKE 68Z
 SPRINGCREEK BROOKE 11W

HART STATE OF WAR 056C
 MRL MISS 6823D
 MRL MWC 41B
 IPU MS. CROSBY 120Y
 MUIRHEAD LIVE WIRE 95R
 KOP MS BENGIE 6P
 WHEATLAND RED TEDDY 457P
 SPRINGCREEK RED TARA 48T



Dam of Lot 56

57

NUG LINDHOLM 88L

HOMO POLLED • PB

NUG 88L • PG1435412 • JAN.23.2023

BW Sep4 Dec29 365 Adj

96 870 1380 1471

CE BW WW YW MILK MCE MWWT

8.3 3.7 78.3 113.1 19.5 4.2 58.7



Lindholt has turned into a tremendous young bull. The Matrix sons are square hipped, thick quartered, heavy haired, and very stylish. A free moving bull here who checks a lot of boxes and will go out and cover a solid group of cows. 88L's deep bodied and high capacity dam has bulls working for Paul Daveiuk and SMB Farms.

SVS SCOUT 25X
S: **SVS MATRIX 530C**
SVS RED SATIN 21Z

WHEATLAND BULL 738T
3D MISS RED NOREMAC 494U
HARVIE JDF WALLBANGER111X
TYMARC SATIN 79T

MADER TIGER CAT 72A
D: **BENS DAISY DUKE 659D**
MAPPINS GUN STAR 422Z

LFE BS LEWIS 322U
RPCC RED TIGER FORCE 214Y
TNT GUNNER N208
MAPPINS KARISMA ROCK

58

NUG LAMONT 42L

HOMO POLLED • PB

NUG 42L • PG1434813 • JAN.15.2023

BW Sep4 Dec29 365 Adj

81 852 1340 1470

CE BW WW YW MILK MCE MWWT

11.7 0.1 87.4 128.8 21.6 7.0 65.3



Lots of calving ease in this massive middled bull that profiles and reads so well on paper. He has that extra shape and presence that we are seeing from lots of these first calving Landmark daughters. Both Landmark's sons and daughters would rank near the very top of our herd for quality of cattle we have sold over the years and his daughters might just be the

best part. Lamont could work well in a lot of different situations and he has the genetics to compliment any herd.



Sire of Lot 58

WS ALL ABOARD B80
S: **WS EPIC E152**
WS MAJESTIC Z133

WS ALL-AROUND Z35
WS LITTLE SISTER W37
GW RED COAT 099TS
WS MOTHER LODE W21

NUG LANDMARK 310G
D: **NUG LASSY 278J**
NUG SASSY 9A

WS BEEF KING W107
MISS CAMDEN 53E
LFE BLACK LAKOTA 385W
TRIPILE C SMARTY PANTS R

59

NUG LABATT 62L

HOMO POLLED • PB

NUG 62L • PG1434878 • JAN.19.2023

BW Sep4 Dec29 365 Adj

94 965 1500 1589

CE BW WW YW MILK MCE MWWT

7.6 3.9 95.3 146.5 27.3 3.0 75.0



Another one of the heavy weights at weaning and yearling and a bull with a really explosive profile. He has a mixture of calving ease and those dark red undertones on both sides of his pedigree. This hairy beef machine will add pounds to your calf crop and his daughters will make great replacement females. We have a few Freedom daughters in our cowherd

and they are all low maintenance cows that just go out and produce. Zevola farms has a maternal brother to this guy.



Sire of Lot 59

CDI AUTHORITY 77X
S: **KWA LAW MAKER 59C**
KWA MS ROCK 14X

NF TRUMP S582
CDI MS CROCKET 88T
KWA RED ROCK 5T
KWA MS BARON 9U

THSF FREEDOM 300N
D: **NUG MAHTI 12G**
NUG TAHITI 130E

BH TRACKER 998J
SAFN MISS ZING 02H
MRL RED WHISKEY 101B
NUG SHAWNA 450B

60

NUG LEVI 36LHOMO POLLED • HETERO BLACK PB
NUG 36L • BPTG1434772 • JAN.12.2023

BW	Sep4	Dec29	365 Adj
105	1005	1580	1653

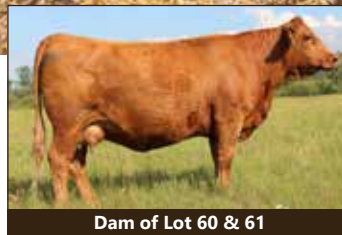
CE	BW	WW	YW	MILK	MCE	MWWT
10.9	3.4	93.9	141.3	19.1	6.1	66.1



R PLUS 5015C
S: R PLUS YUMA 9087G
MISS R PLUS 3007A

MRL RED WHISKEY 101B
D: NUG GOLDIE 31G
SPRINGCREEK B GOLD 18X

WFL ABSOLUTE 51Y
IPU MS. 56U LINER 15A
R PLUS HARD ROCK 145X
MISS R PLUS 1142Y
TNT BOOTLEGGER Z268
MRL MISS 677Y
SPRINGCREEK TEDDY 72U
SPRINGCREEK RED TARA 90S



Dam of Lot 60 & 61

A powerful transplant bull here that was one of the heaviest at weaning and yearling. He is a flushmate to 7L and sired by Yuma who has done a very good job of producing top quality progeny here. 36L's dam is a full sib to a past high seller NUG Carhartt 211F and is a powerful long bodied cow with tons of middle, and an easy milking yet neat udder. She is a favourite of many visitors and the mother of our black Friday Night Lights high seller last year to Tri K Cattle. We have a daughter retained in the herd and her son last year sold to Brad Paulgaard who has a very impressive set of cows and high quality bull battery.

61

NUG TEMPE 7LHOMO POLLED • HETERO BLACK PB
NUG 7L • BPTG1434635 • JAN.1.2023

BW	Sep4	Dec29	365 Adj
82	855	1330	1359

CE	BW	WW	YW	MILK	MCE	MWWT
11.5	0.0	76.5	110.8	19.1	6.6	57.4



R PLUS 5015C
S: R PLUS YUMA 9087G
MISS R PLUS 3007A

MRL RED WHISKEY 101B
D: NUG GOLDIE 31G
SPRINGCREEK B GOLD 18X

WFL ABSOLUTE 51Y
IPU MS. 56U LINER 15A
R PLUS HARD ROCK 145X
MISS R PLUS 1142Y
TNT BOOTLEGGER Z268
MRL MISS 677Y
SPRINGCREEK TEDDY 72U
SPRINGCREEK RED TARA 90S



Maternal Sib to Lot 60 & 61

We really like the Yuma sired cattle for their low birth weight and excellent growth and weaning spread. They are all strong topped, long bodied, and have plenty of style and presence in both the bulls and heifers. A stacked pedigree with consistent production here from another donor dam that will make this guy an easy choice on sale day.

62

NUG STETSON 24LHOMO POLLED • HOMO BLACK PB
NUG 24L • BPG1436403 • JAN.9.2023

BW	Sep4	Dec29	365 Adj
98	882	1440	1514

CE	BW	WW	YW	MILK	MCE	MWWT
4.3	4.5	85.8	127.8	27.1	-1.4	70.0



If you want to add length of body and frame to your black cattle while still maintaining capacity and natural fleshing have a look here. Another heavy weight in the black pen with explosive growth that will sire those heavy weight steers who top the market while still giving you beautiful daughters. Stetson's dam is a model cow packed with capacity who goes back to our Skors 103W cow that put many bulls through the sale. Stetson resembles his sire Jackpot a

lot who was a high seller in 2022 to Sunrise Simmentals and Clifford Land & Cattle.



Sire of Lot 62

R PLUS YUMA 9087G
S: NUG JACKPOT 51J
SPRINGCREEK BROOKE 68Z

R PLUS 5015C
MISS R PLUS 3007A
KOP CROSBY 137W
SPRINGCREEK BROOKE 11W

MRL VELOCITY 35E
D: NUG CLOVER 158G
SKORS DREAM 103W

MRL MISSILE 138C
MRL MISS 715W
CNS DREAM ON L186
SKORS MS FULLBACK 236T

63

NUG SHOWTIME 54LHOMO POLLED • HETERO BLACK PB
NUG 54L • BPTG1434830 • JAN.16.2023

BW	Sep4	Dec29	365 Adj
98	840	1300	1365

CE	BW	WW	YW	MILK	MCE	MWWT
4.4	4.1	67.5	104.3	24.5	4.8	58.3



A very muscular and performance orientated bull with a ton of style in a moderate package. He is the result of another successful flush from a very productive mother cow. Liner 56U is found in the pedigree of many of the great ones and this guy's dam is one we think can compete with the best of them. The amount of volume and depth of body she fits into her medium frame and the way she keeps her

condition all year round is simply unbelievable. Her tanky profile stands on a large square foot with a picture perfect udder that we are so critical on for our flush cows. Sunny Valley purchased a full sister last year, we retained one in the herd, and Babcock Livestock has the other brother.



Maternal Sib to Lot 63

LFE CASH 386D
S: LFE GAME FACE 338F
LFE BS AMBER 60D

LFE BOUNTY 3118Z
LFE BS FIRSTBASE 39B
NCB COBRA 47Y
LFE BS AMBER 125B

SPRINGCREEK LINER 56U
D: MAF POCAHONTAS 164B
IPU 52N POCAHONTAS 215U

RCC/TCF LINE DRIVE M181
NEVAS L93
TNT ACCELERATOR S226
IPU RED POCAHONTAS 52N

64

NUG CHELIOS 78LHOMO POLLED • HOMO BLACK PB
NUG 78L • BPG1435032 • JAN.22.2023

BW	Sep4	Dec29	365 Adj
98	935	1400	1470

CE	BW	WW	YW	MILK	MCE	MWWT
6.5	3.7	95.6	147.2	28.8	5.4	76.6



Another super soft made Walter son with tons of volume and hind quarter. He has a great amount of presence in the pen and comes from a cow family known for their udders, sogginess, and rib shape. 78L's sire Walter has bred exceptionally well for us with lots of performance yet calves very well, a nice combination to have. This guy's sons will push the scale down in the fall and be popular in the auction ring. His daughters should make terrific replacement females as well.

MRL BENDER 25F
S: MRL WALTER 47H
FLYF PEGS POCAHONTAS 720E

HART STATE OF WAR 056C
MRL MISS 6823D
MRL MWC 41B
IPU MS. CROSBY 120Y

MRL DISCOVERY 21A
D: NUG FARRAH 290D
D BAR C BLK MUMBO 80X

MRL INTEGRITY 76Y
TSN MS EDITION 55W
WS OPTIMAL VISION S28
D BAR C BLK MUMBO 894U

65

NUG LIDSTROM 131LHOMO POLLED • HETERO BLACK PB
NUG 131L • BPG1435998 • FEB.6.2023

BW	Sep4	Dec29	365 Adj
93	806	1410	1590

CE	BW	WW	YW	MILK	MCE	MWWT
10.2	1.3	86.0	132.6	26.6	7.1	69.6



MRL BENDER 25F
S: MRL WALTER 47H
FLYF PEGS POCAHONTAS 720E

SKORS BLACK ENTICER 4W
D: SKORS LADY FRED A 27G
SKORS LADY FRED A 55B

HART STATE OF WAR 056C
MRL MISS 6823D
MRL MWC 41B
IPU MS. CROSBY 120Y
SHS ENTICER P1B
SKORS MISS JOKER 10N
3D BLK FULL THROTTLE 483X
SKORS LADY FRED A 164X



Sire of Lots 64-66

A feature black bull that is a pen favourite. He is a bull that you can admire any way you look at him, big mid-dled, square topped, and tons of dimension throughout. He has that clean make and extra presence that makes him impossible to miss in the pen. Lidstroms dam is a beautiful uddered pear shaped cow that happens to be a full sibling to our 186F bull that is leaving us an awesome set of females. His sire Walter gave us mostly heifer calves last year but never-less is quickly leaving his mark on our herd. Many of our high selling black bulls in the 2023 sale were Walter sons and his females topped our heifer sale this fall. Check out Lidstroms set of numbers to back up this already impressive bull.

66

NUG LIONEL 135LHETERO POLLED • BLACK PB
NUG 135L • BPG1436203 • FEB.8.2023

BW	Sep4	Dec29	365 Adj
90	770	1255	1427

CE	BW	WW	YW	MILK	MCE	MWWT
8.0	3.6	90.4	135.9	28.8	5.3	74.0



MRL BENDER 25F
S: MRL WALTER 47H
FLYF PEGS POCAHONTAS 720E

NUG CRACKEN 358E
D: NUG KATIE 129H
SKORS KATIE 319B

HART STATE OF WAR 056C
MRL MISS 6823D
MRL MWC 41B
IPU MS. CROSBY 120Y
MRL RED WHISKEY 101B
NUG FANCY 417B
KOP WALKERSON 136Z
SKORS MS RED KATE 112U

135L offers an out-cross pedigree and all-around package. He is a deep bodied bull that is as mellow and thick quartered as they come. Being sired by Walter you get that ample performance with a little extra length and a thick haircoat. Lots of highly productive cattle throughout this young dam's pedigree.

67

NUG CORY 65LHOMO POLLED • HOMO BLACK PB
NUG 65L • BPG1434895 • JAN.20.2023

BW	Sep4	Dec29	365 Adj
82	860	1360	1456

CE	BW	WW	YW	MILK	MCE	MWWT
7.8	4.7	85.9	137.8	28.5	4.7	71.5



65L and 66L are twin brothers who are very similar in their make up. Both are smooth made herd sire prospects that will add power and performance to their offspring. These bulls have plenty of volume, lots of thickness, and sound to the ground. Their dam ETZ 401B is hard to pick a hole in. She is elegant fronted, massive middled, and carries a nice balanced udder. We have flushed her the last couple of years and no one walks by without commenting on the high quality cow she is. We have had so much success with their sire Captain Morgan that we still breed a couple of cows to him and year after year he does not disappoint.



Dam of Lots 67-69



Sire of Lots 67 & 68

HARVIE JDF WALLBANGER111X
S: SVS CAPTAIN MORGAN 11Z
SUNNYVALLEY BLK JENNA 88U

SHS ENTICER P1B
JDF PEPSI 61U
RLA REDSTREAM 152S
WLB 32H JENNA 360R

HSF HIGH ROLLER 12T
D: SKORS BLACK TESSA 401B
SKORS BLACK TESSA 180A

TJ 57J THE GAMBLER
HSF RED FORTUNES SIS 33
SKORS BLACK ENTICER 4W
SKORS DREAM GAL 24X



68

NUG TREVOR 66LHOMO POLLED • HETERO BLACK PB
NUG 66L • BPG1434897 • JAN.20.2023

BW	Sep4	Dec29	365 Adj
88	746	1240	1346

CE	BW	WW	YW	MILK	MCE	MWWT
8.7	2.9	81.1	125.8	28.5	5.4	69.1

69

NUG TACOMA 29LHOMO POLLED • HOMO BLACK PB
NUG 29L • BPTG1434770 • JAN.11.2023

BW	Sep4	Dec29	365 Adj
97	926	1505	1575

CE	BW	WW	YW	MILK	MCE	MWWT
9.5	3.8	97.2	149.8	27.9	4.9	76.5



A very solid made bull here who is square made from the ground up. He has that extra length and front-end extension with plenty of hair that gives him that extra stylish character. Another heavy weight and power bull in the pen that posted some impressive weaning and yearling weights. Tacoma is mothered by a front pasture donor cow that seems to cross well with a variety of herd sires. Bryon Mailer, Camden Cattle, Rick Kendall all have



Sire of Lot 69-71

sons off 401B and she has two more sons in this sale- 65L and 66L. To add to her accomplishments 401B and her natural calf 66L were champion cow calf pair at the Vermillion pen show this summer.

NGDB STRUCTURE 34D
S: RF CALIBER 014G
RF NOT JUST A FLIRT 404B

NCB COBRA 47Y
NGDB LOUISE 411 B
SVS CAPTAIN MORGAN 11Z
RF CERTAINLY FLIRTIN 202Z

HSF HIGH ROLLER 12T
D: SKORS BLACK TESSA 401B
SKORS BLACK TESSA 180A

TJ 57J THE GAMBLER
HSF RED FORTUNES SIS 33
SKORS BLACK ENTICER 4W
SKORS DREAM GAL 24X

70

NUG TURBO 60L

HOMO POLLED • PB

NUG 60L • BPG1434876 • JAN.18.2023

BW	Sep4	Dec29	365 Adj
89	756	1240	1343

CE	BW	WW	YW	MILK	MCE	MWWT
5.2	5.1	88.8	132.3	19.8	2.6	64.2



You can't build a pedigree much better than this one. His sire Caliber is producing high sellers across the land. They are stout hipped, big topped, and extremely soft made. As mentioned, Turbo's dam we can't say enough about and is also the mother of 54L. She is a tank and could probably live on wheat straw. She was the mother of our high selling black bred this fall to Mcmillen Ranching along with many others. Get a few of these Caliber sons in the bull battery and watch your cowherd excel.

NGDB STRUCTURE 34D
S: RF CALIBER 014G
RF NOT JUST A FLIRT 404B

NCB COBRA 47Y
NGDB LOUISE 411 B
SVS CAPTAIN MORGAN 11Z
RF CERTAINLY FLIRTIN 202Z

SPRINGCREEK LINER 56U
D: MAF POCAHONTAS 164B
IPU 52N POCAHONTAS 215U

RCC/TCF LINE DRIVE M181
NEVAS L93
TNT ACCELERATOR S226
IPU RED POCAHONTAS 52N

71

NUG LEOPOLD 12L

HOMO POLLED • HOMO BLACK 3/4

NUG 12L • BPTRS1434749 • JAN.4.2023

BW	Sep4	Dec29	365 Adj
101	956	1485	1513

CE	BW	WW	YW	MILK	MCE	MWWT
8.7	2.1	91.0	130.6	19.0	4.7	64.5



A super stout, soft made, and big footed ¾ blood bull from a great mother cow who pushes down the scale. We purchased his dam from the Cobra event a few years ago and what a nice find she has been. 1703E has put two bulls through the sale and we have retained two females. Leopolds full sib was also one of our FNL consignments that sold to Deeg Simmentals this fall. This Caliber combination

is sure to produce some absolute stunning black replacement females and a consistent group of steers that will be easily picked up in the fall.



Full Sib to Lot 71

NGDB STRUCTURE 34D
S: RF CALIBER 014G
RF NOT JUST A FLIRT 404B

NCB COBRA 47Y
NGDB LOUISE 411 B
SVS CAPTAIN MORGAN 11Z
RF CERTAINLY FLIRTIN 202Z

BROOKING BANK NOTE 4040
D: WHL BROOKE 1703E
JR BROOKE

CONNELLY EARNAN 076E
E A ROSE 918
MR HOC BROKER
JR ERICA TOO

72

NUG JESSE JAMES 3L

HOMO POLLED • HETERO BLACK PB

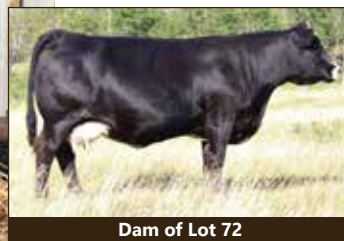
NUG 3L • BPG1432858 • JAN.2.2023

BW	Sep4	Dec29	365 Adj
101	870	1405	1449

CE	BW	WW	YW	MILK	MCE	MWWT
7.4	4.2	86.9	125.7	24.1	4.7	67.6



A long bodied and impressive individual that combines some solid red and black genetics which have proven themselves very well on our farm. 3L's dam has earned her spot on the farm year after year putting multiple females through the heifer sale and producing herdbulls for Ference Land & Cattle as well as the Camrose Colony. A complete herdbull here that will add pounds to his steers and produce both red and black power females for your herd.



Dam of Lot 72

SVS TYCOON 841F
S: SVS RANCHER 42H
HLTS SAMMIE

SVS BROOKS 669D
SVS RED ANNIE 411B
WS BEEF KING W107
BRANT DONT YA LOVE ME

SVS SCOUT 25X
D: NUG MARTINIA 69Z
NUG MISS 960W

WHEATLAND BULL 738T
3D MISS RED NOREMAC 494U
NICHOLS BLK DESTINY D12
NUG PLUM 432P

73

NUG HAPPY HOUR 6LHOMO POLLED • HOMO BLACK PB
NUG 6L • UNR1434632 • JAN.1.2023

BW Sep4 Dec29 365 Adj

98 1040 1535 1559

CE BW WW YW MILK MCE MWWT

5.2 4.4 103.8 160.2 23.6 1.0 75.5



The heavyweight in the black division that just has that herdbull look and one who is as square hipped and long spined as they come. 6L is a super stout Favor son off the 56B donor that will add performance and power to your calf crop. He comes with that extra thickness, masculinity, depth of body, and great haircoat that gives him that herdbull look. His dam is a pear shaped, thick and easy doing cow, that has been in our donor pen for many years now. His flushmate sisters sold to Josh Sten-toft at FNL last year and the other was purchased by Blake Rogerson at the Classic sale this fall. A true power bull from a farm favourite donor

cow that has 17 registered progeny and has put almost to many high selling bulls and females through the sale ring to count.

LCDR WITNESS 541C
S: LCDR FAVOR 149F
WS MISS SUGAR C4

HARVIE JDF WALLBANGER111X
D: LRX MS BLAZE 56B
LRX RED 116U

OLF OTIS Y43
WS MOTHER LODGE W21
CLRS GRADE-A 875 A
WS ANISE A71

SHS ENTICER P1B
JDF PEPSI 61U
ERIXON RED RUSTLER
LRX 49N



Dam of Lot 73

74

NUG LUMINEER 81LHETERO POLLED • HETERO BLACK PB
NUG 81L • BPG1435403 • JAN.22.2023

BW Sep4 Dec29 365 Adj

96 790 1260 1411

CE BW WW YW MILK MCE MWWT

7.4 3.2 81.6 123.8 26.5 5.2 67.3



A well balanced square hipped bull that has a lot of great breed character going for him and with a super disposition. A royally bred Fleetwood son off a first calf heifer that we think has a lot of potential. He will be a brood cow maker and goes back to some super stout big tanky cows. Performance, predictability, and consistency in this genetic package. Ranch bull deluxe here.

CMS SOCHI 307A
S: R PLUS FLEETWOOD 1012J
MISS R PLUS 9495G

SPRINGCREEK LINER 56U
D: NUG FANCY 208J
NUG FANCY 417B

DRAKE POKER FACE 2X
YR BLK PRIMADONNA 930W
R PLUS 7141E
MISS R PLUS 4005B
RCC/TCF LINE DRIVE M181
NEVAS L93
SVS CAPTAIN MORGAN 11Z
NUG TERRA 1Z



Maternal Granddam of Lot 74



Sire of Lot 74

75

NUG LENNON 37L

HOMO POLLED • PB

NUG 37L • BPG1434780 • JAN.12.2023

BW	Sep4	Dec29	365 Adj
93	845	1350	1421

CE	BW	WW	YW	MILK	MCE	MWWT
7.5	3.7	81.4	126.0	25.0	3.0	65.7



A pen favourite here who has that herdbull look. Moderate birth-weight, very complete, stout made, with tons of rib shape and hair. His sire Enticer 186F is leaving some very nice uddered, powerful, and stylish daughters. If you come to the farm and see our 186F daughters in production with their calves at side you will not be disappointed. Every year he seems to sire those bulls and heifers that make the keeper pen.

SKORS BLACK ENTICER 4W
S: SKORS BLACK ENTICER 186F
 SKORS LADY FREDIA 55B

R PLUS 5015C
D: MISS R PLUS 9221G
 MISS R PLUS 3095A

SHS ENTICER P1B
 SKORS MISS JOKER 10N
 3D BLK FULL THROTTLE 483X
 SKORS LADY FREDIA 164X
 WFL ABSOLUTE 51Y
 IPU MS. 56U LINER 15A
 R PLUS HARD ROCK 145X
 MISS R PLUS1012Y

76

NUG RIDGEBACK109L

HOMO POLLED • HETERO BLACK PB

NUG 109L • BPG1436121 • JAN.30.2023

BW	Sep4	Dec29	365 Adj
94	828	1345	1475

CE	BW	WW	YW	MILK	MCE	MWWT
6.2	4.9	83.6	129.5	27.3	3.6	69.1



Good disposition, sound footed, with a bit of an outcross pedigree. 109L's sire has been a very consistent producer of both female and male progeny. His offspring seem to always make the bull or replacement heifer pen. 186F adds muscle, shape, length of body, and that extra hair and style we like to see in our cattle. When you add the Enticer 4W udder and front end extension you end up with some super square hipped yet elegant momma cows.

SKORS BLACK ENTICER 4W
S: SKORS BLACK ENTICER 186F
 SKORS LADY FREDIA 55B

PVF-BF BF26 BLACK JOKER
D: NUG TEAL 79G
 NUG LIBBY 55E

SHS ENTICER P1B
 SKORS MISS JOKER 10N
 3D BLK FULL THROTTLE 483X
 SKORS LADY FREDIA 164X
 HARTS BLACK CASINO B408
 PVF-BF MABELLE C131
 WFL WESTCOTT 24C
 BLACKSAND SADIE 4Z

77

NUG MR. ENTICER 139LHOMO POLLED • HETERO BLACK PB
NUG 139L • BPG1436217 • FEB.10.2023

BW Sep4 Dec29 365 Adj

100 800 1265 1416

CE BW WW YW MILK MCE MWWT

6.1 5.1 77.5 108.8 28.0 3.9 66.8



A typical 186F son, substance, big square hip, plenty of hair, and with that added look. A bull with a nice amount of bone and sound on the move. We purchased 186F in the mind of making outstanding females which have been very well received in the classic sale and replacement pen, but boy the bull calves have done an awfully good job also. His dam is an angular, broad hipped

cow we purchased from West Gold Farms.



Maternal Sib to Lot 77

SKORS BLACK ENTICER 4W
S: SKORS BLACK ENTICER 186F
SKORS LADY FREDIA 55B

SHS ENTICER P1B
SKORS MISS JOKER 10N
3D BLK FULL THROTTLE 483X
SKORS LADY FREDIA 164X

MCINTOSH STOCKMAN 43E
D: KHG SHIREECE 81G
KHG SKYLAR 236E

CCR COWBOY CUT 5048Z
MCINTOSH FUNNY FACE 21C
LRX WALLBANGER 73Z
KHG TERRA GOLD 82T

78

NUG FORTRESS 129LHOMO POLLED • HOMO BLACK PB
NUG 129L • BPG1435996 • FEB.5.2023

BW Sep4 Dec29 365 Adj

104 892 1425 1577

CE BW WW YW MILK MCE MWWT

5.1 5.3 90.2 138.9 30.7 4.1 75.8



A stacked pedigree of some great genetics in this guys pedigree. Long bodied, soft sided, tons of hair, and a big solid foot- another typical 186F son. A younger bull that has matured quickly and displays some of the heaviest adjusted weights. He comes from a lineage of dams who have put multiple bulls through the sale ring. His dam herself produced a high selling black bull to Fore See Cattle Co. Whether you want a pen of heavy weaning steers or highly productive replacement heifers this guy should help accomplish that. He is one that is even more impressive to see in person.

SKORS BLACK ENTICER 4W
S: SKORS BLACK ENTICER 186F
SKORS LADY FREDIA 55B

SHS ENTICER P1B
SKORS MISS JOKER 10N
3D BLK FULL THROTTLE 483X
SKORS LADY FREDIA 164X

NUG ENCORE 259E
D: NUG PAIGE 13G
ERIXON LADY 201A

NCB COBRA 47Y
MAF POCAHONTAS 164B
HARVIE JDF WALLBANGER111X
ERIXON LADY 77Z



79

NUG VELOCITY 124LHOMO POLLED • HOMO BLACK PB
NUG 124L • BPG1435984 • FEB.4.2023

BW	Sep4	Dec29	365 Adj
93	812	1335	1484

CE	BW	WW	YW	MILK	MCE	MWWT
6.8	3	79.8	120.8	28.7	3.1	68.6



We had to sell 186F this fall due to injury and are going to have a big hole to fill in our bull battery. After analyzing this large group of bulls off 186F and his milking daughters we have come to realize the fault free and fundamentally sound offspring he has left us. When looking at seed stock the first thing you look for is that structural correctness, natural fleshing, and maternal longevity that all these 186F calves display so well. Velocity is very much like his sire with his easy doing profile and herdbull presence. His dam is turning into an awesome young cow that has a very bright future ahead of her. She already has a son working at Erskine farming and was a part of our feature black pasture group.

SKORS BLACK ENTICER 4W
S: SKORS BLACK ENTICER 186F
SKORS LADY FREDIA 55B

SHS ENTICER P1B
SKORS MISS JOKER 10N
3D BLK FULL THROTTLE 483X
SKORS LADY FREDIA 164X

SFM STOUGHTON 18D
D: WLB 18D SOFIE 354G
WLB 34Y CORA 449C

NCB COBRA 47Y
SFM BS 119B
FBF1 COMBUSTIBLE
WLB 223W GWEN 373Z

80

NUG BICHETTE 115LHOMO POLLED • HETERO BLACK 3/4
NUG 115L • BPRS1436156 • FEB.1.2023

BW	Sep4	Dec29	365 Adj
92	832	1355	1481

CE	BW	WW	YW	MILK	MCE	MWWT
7.0	3.4	79.8	126.1	27.9	5.3	67.8



SKORS BLACK ENTICER 4W
S: SKORS BLACK ENTICER 186F
SKORS LADY FREDIA 55B

HF STORM CENTER 26D
D: SUN RISE BLACK 27F
SUN RISE BLACK 22D

SHS ENTICER P1B
SKORS MISS JOKER 10N
3D BLK FULL THROTTLE 483X
SKORS LADY FREDIA 164X
MUSGRAVE BIG SKY
HF MISS BLACKCAP 296Y
SPRINGCREEK LINER 56U
SUN RISE BLACK 93A

A power bull here with a little more frame and a solid set of numbers. A looker here for his length, capacity, and smooth makeup. 115L's dam is one of those awesome halfblood cows that is just hitting her prime. She is royally bred and with her awesome udder and high capacity you can't help but to stop and look at her and her calf on summer tours. A son of 27F is working at Todd Ranches. The females off this guy and his feed efficient calves will benefit all parts of the industry.

81

NUG LENNOX 21LHOMO POLLED • HETERO BLACK 1/2
NUG 21L • BPRS1439684 • JAN.8.2023

BW Sep4 Dec29 365 Adj

85 904 1470 1598

CE BW WW YW MILK MCE MWWT

13.7 0.6 82.9 129.4 33.4 5.6 74.9

COLEMAN BRAVO 6313
S: COLEMAN TRIUMPH 9145
LAWSON'S CHLOE C815RF/RUST STIMULUS 610D
D: SATH MISS 45J
BLCC MISS SLEDGE 199ACOLEMAN CHARLO 0256
COLEMAN DONNA 714
S A V RENOWN 3439
LAWSON'S CHLOE Z341
TNGL GRAND FORTUNE Z467
RF NOT JUST A FLIRT 404B
R PLUS 110X
BLCC MISS RED ROCK 41W

Sire of Lot 81 & 82

We think these half blood bulls have a lot to offer the beef business which is easy to see when you look at this guy's birth to weaning spread. They start off small and end up with weaning and yearling weights at the top end of the bull pen. However, the best part of the whole deal is the percentage females that make great mother cows. We realize pedigrees are important and these half blood bulls are so consistent in type and perform so well because they stem from great mother cows. 21L's dam has turned into a really complete made cow with a nice square udder which we purchased her from Sather

Simmentals who are putting together a very solid herd themselves. A smooth made and long bodied bull here that profiles so well and can be utilized in a variety of ways.

82

NUG DAX 25LHOMO POLLED • HOMO BLACK 1/2
NUG 25L • BPRS1439675 • JAN.9.2023

BW Sep4 Dec29 365 Adj

81 868 1430 1530

CE BW WW YW MILK MCE MWWT

15.4 -0.4 86.8 132.9 29.4 7.5 72.8

COLEMAN BRAVO 6313
S: COLEMAN TRIUMPH 9145
LAWSON'S CHLOE C815X-T BLACK TERMINATOR 46C
D: NUG MYLA 111H
SUN STAR PAM 8FCOLEMAN CHARLO 0256
COLEMAN DONNA 714
S A V RENOWN 3439
LAWSON'S CHLOE Z341
WHEATLAND TERMINATOR 202Z
X-T BLACK HEROINE 86U
HART STATE OF WAR 056C
SUN STAR PAM 102Y

Granddam of Lots 81 & 82

Another light birth-weight smooth made half blood bull with lots of muscle shape and performance that again has impressive weaning a yearling weights. So many calving ease sires on both sides of this guys pedigree that in the end has resulted in a very high quality herdsire prospect that will defiantly compliment the beef business. Porter Ranches purchased this guys maternal brother last year. Check this guy and his numbers out.

Garth, Angela, Kade and Abby Rancier
 Ph: (780) 385-2425
 Cell: (780) 385-5313
 rancierfarms@xplornet.ca
 www.rancierfarms.com

Directions: From Killam, 2 miles west on
 HWY 13, 4 miles north on RGE RD 141

Watch our website, Facebook, and
 Youtube pages for updated
 information and videos.

*All bulls are DNA Parentage Verified



83

RF BOOST 393

HETERO BLACK • HOMO POLLED PB
 GNR 93L • BPTG1428538 • JAN.13.2023

BW	Sep16	205Adj	365Adj
102 _{ET}	1195	1012	1630

CE	BW	WW	YW	MILK	MCE	MWWT
4.6	5.7	116.2	169.2	23.0	1.7	81.1



RF Sheila 023H
 Maternal Sister to Lot 83

NGDB STRUCTURE 34D
S: RF CALIBER 014G
 RF NOT JUST A FLIRT 404B

SPRINGCREEK LINER 56U
D: RF SHEILA 7105E
 LFE BS SHEILA 82A

NCB COBRA 47Y
 NGDB LOUISE 411 B
 SVS CAPTAIN MORGAN 11Z
 RF CERTAINLY FLIRTIN 202Z
 RCC/TCF LINE DRIVE M181
 NEVAS L93
 LFE THE DARK NIGHT 350U
 LFE BS SHEILA 136T



RF Sheila 7105E
 Dam of Lot 83



RF Caliber 104G
 Sire of Lots 83 -102

RF Boost 393 is the pen heavyweight and the first bull to be found on every pasture tour all summer. He posted a Sept 16 weight of 1195 lbs and continued on to an adj yw of 1630 lbs. His powerful dam is a Liner 56U daughter that raised a \$30,000 Structure daughter in her first try that sold to Rust Mountain View Ranch in North Dakota. Her second calf was a \$25,000 Bentley daughter that sold to Wallgren Farms. That daughter, RF Sheila 023H, went on to raise a Caliber calf, WF Capital, that sold in December at Friday Night Lights for \$240,000. Boost 393 is a 3/4 brother to Capital and Boost is one of the most exciting power bulls that we have had in our bull pen with his extra mass and muscle and depth. His sire, Caliber, was our high seller in 2021 to KT Ranches and Canadian Sires and is proving himself as one of the great breeding bulls in the breed. At the Friday Night Lights Sale in December, 14 Caliber calves averaged \$59,357. Most recently at the New Years Resolution sale, sexed Caliber semen sold for \$1000/straw. Get ahead of the crowd and get a Caliber son and add another great cow into the equation.



Pounds pay but "Presence" or "Look" always command a premium whether it's a fancy heifer calf, a proud herd sire, a pen of fancy bred heifers in a sale or your favorite front pasture cow. The Caliber progeny have that extra presence that is so tough to get along with mass and muscle and pounds and these two full brothers excel in that. RF Intensity 3142 and RF Intense 3144 are a pair of February born bulls and are exactly what we strive to produce. Performance, muscle, great hair, sound structure and great footed with generations of great cows behind them. They are a genetic snapshot of our program wrapped up into one package with the some of the most influential cow families that we have produced all in one pedigree. The best cows from the Scream, Flirt, and Famous cows families are all represented and are also some of the most influential cows in the Simmental breed in recent years. We cannot say enough about how excited we are about the many time champion Scream 974G donor and how she is producing. ½ interest in 974G sold for \$50,000 in the Family Matters Sale last summer and full sib embryos to these bulls sold for \$5,000 each in the New Years Resolution Sale. Kade showed a full sister this past fall that won her division everywhere she went and is one of the most unique heifers we have ever shown and there are two more full sisters in the replacement pen. 974G will play a major role in our ET program going forward and you will hear a lot about her in the future. These two bulls are so typical of the Caliber progeny with the great hair, added performance and extra look that is so hard to combine into one package. Whether you want homo or hetero black, baldy or blaze, these two brothers have you covered. We think these brothers are the kind to build a cow herd around and will still be herd bull producers too.



RF Scream 974G
Dam of Lots 84 & 85



RF Scream 3134
Full sister to Lots 84 & 85

84

RF INTENSITY 3142
HETERO BLACK • HOMO POLLED PB
GNR 142L • BPTG1428558 • FEB.6.2023

BW	Sep16	205Adj	365Adj	CE	BW	WW	YW	MILK	MCE	MWWT
100ET	996	940	1622	4.5	4.6	99.2	143.9	18.3	1.6	67.9

85

RF INTENSE 3144
HOMO BLACK • HOMO POLLED PB
GNR 144L • BPTG1428559 • FEB.10.2023

BW	Sep16	205Adj	365Adj	CE	BW	WW	YW	MILK	MCE	MWWT
102ET	932	895	1612	6.4	5.9	108.2	161.7	18.3	3.0	72.4

NGDB STRUCTURE 34D
S: RF CALIBER 014G
RF NOT JUST A FLIRT 404B

RF CAPACITY 742E
D: RF SCREAM 974G
RF SCREAM 215Z

NCB COBRA 47Y
NGDB LOUISE 411 B
SVS CAPTAIN MORGAN 11Z
RF CERTAINLY FLIRTIN 202Z
WFL WESTCOTT 24C
RF FAMOUS 409B
MR HOC BROKER
RF SCREAM 39X

86

RF CENTERFIRE 354HETERO BLACK • HOMO POLLED PB
GNR 54L • BPTG1428233 • JAN.5.2023

BW	Sep16	205Adj	365Adj
96ET	1015	822	1675



One of the most exciting set of 5 flush brothers that we've ever produced. They're a soggy group of sound and hairy flush-mates with extra thickness and loaded with maternal power on both sides. Their dam has a little different twist to her pedigree and is one of the most phenotypically beautiful cows we have ever raised. She has the unique combination of a big, wide hip, massive middle, near perfect udder and a refined, long, feminine front end that is so tough to make. Unfortunately, she was a product of "murphy's law" and we lost her far too early as we really thought she was going to have a major impact on our program. Fortunately, we did get some embryos before we lost her. A flush mate sister, RF Flirt 398, was Supreme Champion Heifer over all breeds at the "Immortals" show last fall winning a Polaris quad and went on to sell at Friday Night Lights for \$80,000 to Wallgren Farms and Double RN. Two more flush mate sisters are in the replacement pen and another daughter sold to Rust Mountain View Ranch for \$30,000 in Friday Night Lights in 2020. Make sure you keep all the daughters out of these brothers, they'll be the herd building kind. Check out their stats too, this group of brothers have big time performance and 354 is the highest adj yw in our whole pen this year. (You'll notice that the 3101 bull is a bit behind his brothers in terms of performance but is catching up since weaning. His recip dam provided him companionship but not as many groceries as the rest of his brothers had)

87

RF FRANCHI 381HETERO BLACK • HOMO POLLED PB
GNR 81L • BPTG1428529 • JAN.10.2023

BW	Sep16	205Adj	365Adj
95ET	940	790	1430



NGDB STRUCTURE 34D
S: RF CALIBER 014G
RF NOT JUST A FLIRT 404B

W/C HUSKER 750C
D: RF FLIRT 786E
RF RED FLIRT 447B

NCB COBRA 47Y
NGDB LOUISE 411 B
SVS CAPTAIN MORGAN 11Z
RF CERTAINLY FLIRTIN 202Z

WCS MR HUSKER 3076A
MISS WERNING 534R
WFL ABSOLUTE 51Y
RF FLIRT 206Z

CE	BW	WW	YW	MILK	MCE	MWWT
6.4	5.0	100.0	155.0	17.5	1.7	67.5

88**RF BENELLI 389**HOMO BLACK • HOMO POLLED PB
GNR 89L • BPTG1428533 • JAN.12.2023

BW Sep16 205Adj 365Adj

92ET 1070 904 1456

RF Flirt 398
Full Sister to Lots 86-90**89****RF IRON SIGHT 3101**HETERO BLACK • HOMO POLLED PB
GNR 101L • BPTG1428536 • JAN.15.2023

BW Sep16 205Adj 365Adj

92ET 854 732 1380

RF Flirt 786E
Dam of Lots 86-90**90****RF MAGNUM 388**HOMO BLACK • HOMO POLLED PB
GNR 88L • BPTG1428530 • JAN.12.2023

BW Sep16 205Adj 365Adj

94ET 1015 859 1507



91

RF RIZZINI 394HOMO BLACK • HOMO POLLED 3/4
GNR 94L • BPRS1442460 • JAN.13.2023

BW	Sep16	205Adj	365Adj
104	994	858	1477

CE	BW	WW	YW	MILK	MCE	MWWT
6.4	5.0	100.0	155.0	17.5	1.7	67.5



I'm not sure how many times we can say they're stout, sound and soggy with lots of performance and great hair but the Caliber sons are so consistent that way and 394 is no exception. His dam is a beautiful uddered cow and is at the top of the list of favorite halfblood cows in the herd, both in terms of phenotype and production. A full sister to 394 was Abby's show heifer this past year. She started out as a calf being crowned Grand Champion Percentage Female at Agribition and won her a few buckles and banners through the spring and summer and finished the fall off as Farmfair Champion Percentage Yearling and Reserve Grand Champion Percentage Female. If you come for a tour, make sure you see her after you see 394.

NGDB STRUCTURE 34D
S: RF CALIBER 014G
RF NOT JUST A FLIRT 404B

S A V RENOVATION 6822
D: RF AMERICANA 997G
TCCO MISS TABLELAND 302A

NCB COBRA 47Y
NGDB LOUISE 411 B
SVS CAPTAIN MORGAN 11Z
RF CERTAINLY FLIRTIN 202Z
S A V RENOWN 3439
S A V MADAME PRIDE 0151
WHEATLAND PREDATOR 922W
TCCO MISS TABLELAND 114Y



RF Americana 997G
Dam of Lot 91



RF Americana 274K
Full Sister to Lot 91

92

RF TIKKA 361HOMO BLACK • HOMO POLLED 3/4
GNR 61L • BPRS1442454 • JAN.6.2023

BW	Sep16	205Adj	365Adj
92	1025	834	1514

CE	BW	WW	YW	MILK	MCE	MWWT
7.1	4.2	103.7	160.1	20.2	3.4	72.1



RF Tikka 361 is another big middled, high capacity, 3/4 blood Caliber son. His dam is a very productive, great uddered and very strong footed Trendspotter daughter and he has an outstanding maternal sister in the 2 year old pen. He was just 92 lbs at birth and posted an actual Sept weight of 1025 and continuing on to a 1514 lb adj yw. A full sister in blood to 361 will be Abby's show heifer this next year and has already come home with a banner from her first show at Farmfair. 394 is homo polled and homo black and will leave a heavy set of sons and pen of daughters that the industry craves.

NGDB STRUCTURE 34D
S: RF CALIBER 014G
RF NOT JUST A FLIRT 404B

BROOKING TRENDSPOTTER 6166
D: RF FLIRT 072H
RF FLIRT 416B

NCB COBRA 47Y
NGDB LOUISE 411 B
SVS CAPTAIN MORGAN 11Z
RF CERTAINLY FLIRTIN 202Z
BROOKING BANK NOTE 4040
SOO LINE ANNIE K 9165
3D BLK FULL THROTTLE 483X
RF FLIRT 9W



RF Flirt 073H
Full Sister to the dam of Lot 92



RF Flirt 9W
Granddam of Lot 92

93

RF CREEDMOOR 390HOMO BLACK • HOMO POLLED 1/2
GNR 90L • BPRS1445342 • JAN.12.2023

BW	Sep16	205Adj	365Adj
101 ^{ET}	1050	921	1678

CE	BW	WW	YW	MILK	MCE	MWWT
7.6	5.1	113.4	185.2	24.9	1.7	81.6



NGDB STRUCTURE 34D
S: RF CALIBER 014G
 RF NOT JUST A FLIRT 404B

S A V PRESIDENT 6847
D: KT ELBA 368H
 SIEBRING ELBA 400

NCB COBRA 47Y
 NGDB LOUISE 411 B
 SVS CAPTAIN MORGAN 11Z
 RF CERTAINLY FLIRTIN 202Z
 COLEMAN CHARLO 0256
 S A V BLACKCAP MAY 4136
 S A V RESOURCE 1441
 S A V ELBA 900



KT Elba 368H
 Dam of Lot 93

RF Creedmoor 390 is a halfblood power bull packed with both real performance and maternal power. His epd's rank in the top 1% of the breed for WW and YW and his actual stats verify that with an actual Sept 16 weight of 1050 lbs and an adj yw of 1678 lbs. Over the past ten years we have been incorporating some of the most proven and exciting Angus bulls into our program and used them on some of our favorite Simmental cows with the theory that a halfblood program only works if you mate the best of both breeds together and that is how to create consistency. This bull was created with the same theory but sired by Caliber and is an ET calf out of an outstanding Angus cow. His dam is backed by generations of donor cows in the Angus breed including being double bred to the great SAV Blackcap May 4136. His dam is a great footed cow and check out her natural calf in the Angus pen sired by Mercury. We don't really think his picture is a true representation of him but check out his video or better yet, come for a tour and see him and his dam.

94

RF CARBINE 349HOMO BLACK • HOMO POLLED PB
GNR 49L • BPG1440313 • JAN.04.2023

BW	Sep16	205Adj	365Adj
96	1010	889	1372

CE	BW	WW	YW	MILK	MCE	MWWT
8.5	3.8	92.4	135.6	22.0	5.3	68.2



NGDB STRUCTURE 34D
S: RF CALIBER 014G
 RF NOT JUST A FLIRT 404B

OUTLAW SODA POP 14B
D: IPU 38A MS. REVLOX 146D
 IPU 225X MS. HORIZON 38A

NCB COBRA 47Y
 NGDB LOUISE 411 B
 SVS CAPTAIN MORGAN 11Z
 RF CERTAINLY FLIRTIN 202Z
 DRAKE POKER FACE 2X
 HPF CREAM SODA Y010
 MAF R HORIZON 7Y
 IPU 105L MS. REVLOX 225X



RF Caliber 014G
 Sire of Lots 83-102

349 is a Homo Polled and Black Caliber son with extra presence and great hair. His dam is a productive Soda Pop daughter that was a Simmsational purchase from the great Labatte program. She has been a very productive cow with a son selling in our bull sale, one daughter selling to South Paw Cattle Co and another selling last summer in the Family Matters Sale. Our first Caliber daughters are calving and we couldn't be happier with them. If you come for a tour, make sure you go through the 2 year old pen and see the sisters to the Caliber bulls.

95

RF AXIS 369HOMO BLACK • HOMO POLLED PB
GNR 69L • BPRS1442456 • JAN.7.2023

BW	Sep16	205Adj	365Adj
88	1070	818	1490

CE	BW	WW	YW	MILK	MCE	MWWT
12.0	1.9	91.4	135.9	20.6	5.2	66.3



Axis 369 is a super attractive, stretchy made, bigger framed Caliber son with the extra chrome and extra look. This bull has a pedigree lined with some great cows on the bottom side going back to his grand dam, the GCC Dixie Erica 106Y donor cow that was as nice of a cow as you could make. His dam was a show heifer for Kade and was a many times champion including Grand Champion Percentage Female at Farmfair. A full sister to 369 was a successful show heifer for Carter Wood including being Grand Champion Female at the Alberta Wildrose Classic Show this past summer. Another sister was Abby's show heifer a couple years

ago as well. He's no slouch in terms of performance with 10 of 13 EPD's above average and check out his actual performance numbers too!

NGDB STRUCTURE 34D
S: RF CALIBER 014G
RF NOT JUST A FLIRT 404B

W/C LOADED UP 1119Y
D: RF DIXIE ERICA 858F
GCC DIXIE ERICA 106Y

NCB COBRA 47Y
NGDB LOUISE 411 B
SVS CAPTAIN MORGAN 11Z
RF CERTAINLY FLIRTIN 202Z
REMINGTON LOCK N LOAD 54U
AUBREYS BLACK BLAZE III
SVF STEEL FORCE S701
O C C DIXIE ERICA 873P



RF Dixie Erica 858F
Dam of Lot 95



GCC Dixie Erica 106Y
Granddam of Lot 95

96

RF BALLISTIC 372HOMO BLACK • HOMO POLLED PB
GNR 72L • BPG1434213 • JAN.7.2023

BW	Sep16	205Adj	365Adj
96	1055	859	1513

CE	BW	WW	YW	MILK	MCE	MWWT
7.7	3.7	101.7	153.0	27.1	1.7	78.0



Another big, long made performance bull with some extra chrome. He pushed down the scales mid September at 1055 lbs and has continued on to post a 1513 lb adj yw! His dam is a beautiful uddered Stepping Stone daughter that never misses and this is her 5th son to sell through our bull sale. Her most notable son is the \$90,000 RF No Limits that has been used in so many programs across Canada. Many No Limits sons will sell in bull sales this spring and daughters were shown very successfully last fall winning many divisions and jackpots. Another bull that will sire steers that will make you major money and leave a group of productive sisters that you'll want to keep.

NGDB STRUCTURE 34D
S: RF CALIBER 014G
RF NOT JUST A FLIRT 404B

WS STEPPING STONE B44
D: RUST MISS 6217D
TNT MISS W31

NCB COBRA 47Y
NGDB LOUISE 411 B
SVS CAPTAIN MORGAN 11Z
RF CERTAINLY FLIRTIN 202Z
W/C LOCK DOWN 206Z
WS MS UPGRADE Z15
TNT KNOCK OUT R206
TNT MISS S82



Rust Miss 6217D
Dam of Lot 96

97

RF SHOCKWAVE 346HOMO BLACK • HOMO POLLED PB
GNR 46L • BPRS1440311 • JAN.3.2023

BW	Sep16	205Adj	365Adj
93	932	736	1515

CE	BW	WW	YW	MILK	MCE	MWWT
8.2	3.1	91.4	146.9	19.3	4.4	65.0



RF Shockwave 346 is another homo polled and black Caliber son that is very balanced and sound with a great look and is super sound. He's long bodied, big hiped and great haired and has the typical Caliber proud front end. His dam is a big bodied, awesome uddered female that is angular and feminine through her front end and is still big middled and wide hiped. Last year she had a Supercharged bull that sold to Rocking Heart and she has an exciting Boomer heifer calf on her this year that is already a favorite. Her granddam was purchased in the Denver sale and has been a very productive donor that goes back to the great Rose 1019 cow that has too many influential and sale topping sons to list.

RF Rose 9130G
Dam of Lot 97

NGDB STRUCTURE 34D
S: RF CALIBER 014G
RF NOT JUST A FLIRT 404B

NCB COBRA 47Y
NGDB LOUISE 411 B
SVS CAPTAIN MORGAN 11Z
RF CERTAINLY FLIRTIN 202Z

WHF LIMITLESS B011
D: RF/CD ROSE 9130G
RUST MISS ROSE 7305E

JF MILESTONE 999W
WHF SIERRA 245S
SVS CAPTAIN MORGAN 11Z
SOO LINE ROSE 1019

98

RF BLACK POWDER 329HETERO BLACK • HOMO POLLED PB
GNR 29K • BPG1434605 • DEC.31.2022

BW	Sep16	205Adj	365Adj
93	970	718	1483

CE	BW	WW	YW	MILK	MCE	MWWT
5.5	5.4	97.9	154.9	17.4	0.5	66.4



329 is a December 31 born Caliber son with extra stretch, body and performance that started with a moderate 93 lb birthweight. A full sister to 329 has already calved and is a beautiful uddered, great footed two year old. Another maternal sister is a Maximus daughter and is one of the favorites in the three year old group. His dam is a big bodied Westcott daughter that goes back to some of the original Flirt cows and had another bull. 739E's first calf was a pen favorite halfblood that sold to Lone Butte Ranching.

RF Flirt 739E
Dam of Lot 98

NGDB STRUCTURE 34D
S: RF CALIBER 014G
RF NOT JUST A FLIRT 404B

NCB COBRA 47Y
NGDB LOUISE 411 B
SVS CAPTAIN MORGAN 11Z
RF CERTAINLY FLIRTIN 202Z

WFL WESTCOTT 24C
D: RF FLIRT 739E
RF CRIMSON FLIRT 12X

TNT 90 PROOF Z401
WFL SWEET LICIOUS 1044X
KENCO/MF POWERLINE 204L
CHUB'S FLIRT 6P

99

RF WINCHESTER 3109HOMO BLACK • HOMO POLLED PB
GNR 109L • BPG1442462 • JAN.18.2023

BW	Sep16	205Adj	365Adj
93	946	825	1383

CE	BW	WW	YW	MILK	MCE	MWWT
10.5	3.3	95.2	138.6	20.6	5.8	68.2



RF Winchester 3109 is a highly maternal, soggy, big middled, heavy haired bull with a moderate birthweight. His productive 12 year old dam just calved and has an udder like a 3 year old. 4Z has been an extremely productive donor cow just like her dam, 854U, and they have a combined 50 progeny in the Canadian database. Many sons are working in some top purebred and commercial herds across the country and numerous daughters are working as donor cows as well. A full brother to 3109 sold to the Ference's at Kirriemuir last year. Check out his EPD's with 10 of 13 traits above average.

Blacksand Sadie 4Z
Dam of Lot 99

NGDB STRUCTURE 34D
S: RF CALIBER 014G
RF NOT JUST A FLIRT 404B

NCB COBRA 47Y
NGDB LOUISE 411 B
SVS CAPTAIN MORGAN 11Z
RF CERTAINLY FLIRTIN 202Z

HART ALL IN W382
D: BLACKSAND SADIE 4Z
BLACKSAND LINETTE 854U

SAS T101 SWEET MEAT
HART LADY LOCATOR P325
SPRINGCREEK LINER 104S
BLACKSAND SADIE 22206S

100

RF RUGER 338HOMO BLACK • HOMO POLLED PB
GNR 38L • BPRS1434608 • JAN.1.2023

BW	Sep16	205Adj	365Adj
97	970	708	1382

CE	BW	WW	YW	MILK	MCE	MWWT
7.5	4.6	85.7	131.1	16.9	3.9	59.8



Another stylish, great haired, homo black Caliber son out of a 10 year old Double Up cow that never misses. His dam was a show heifer for Cole McMahon and her full sister was a many times champion for him including Supreme Champion at the Calgary Stampede Summer Synergy show. This is her second son to sell in our bull sale and 5 maternal sisters to 338 are working in purebred herds across Canada. There are generations of great uddered, high volume females behind 338.

RF On A Mission 462B
Dam of Lot 100

NGDB STRUCTURE 34D
S: RF CALIBER 014G
RF NOT JUST A FLIRT 404B

NCB COBRA 47Y
NGDB LOUISE 411 B
SVS CAPTAIN MORGAN 11Z
RF CERTAINLY FLIRTIN 202Z

RF DOUBLE UP 37W
D: RF ON A MISSION 462B
RF ON A MISSION 12U

SS EBONY'S INTUITION 802
TLG FLIRTIN WITH YOU
S-PAW MUTUAL FUND 301M
SIMMENTAL/ANGUS

101

RF HORNADY 378HOMO BLACK • HOMO POLLED PB
GNR 78L • BPRS1442458 • JAN.10.2023

BW	Sep16	205Adj	365Adj
90	1025	894	1388

CE	BW	WW	YW	MILK	MCE	MWWT
8.7	3.9	101.4	152	21.2	3.1	71.9



Another Homo polled and black Caliber son going back to the Rose cow family. Just a 90 lb bw and weaned off his 3 year old dam at 1025 lbs mid September. The bottom side of his pedigree is filled with great cows going way back to the Soo Line Rose 1019 Angus donor that has too many prolific sons to mention. We purchased his grand dam 7305E with Canadian Donors in the Denver sale and she has been a big time producer. Another bull with added length and hip with the extra look through his front end. Real performance along with WW and YW EPD's in the top 1% of the breed and loads of cow power behind him.

Rust Miss Rose 7305E
Granddam of Lot 101

NGDB STRUCTURE 34D
S: RF CALIBER 014G
RF NOT JUST A FLIRT 404B

NCB COBRA 47Y
NGDB LOUISE 411 B
SVS CAPTAIN MORGAN 11Z
RF CERTAINLY FLIRTIN 202Z

MR TR HAMMER 308A ET
D: RF ROSE 0116H
RUST MISS ROSE 7305E

MR NLC UPGRADE U8676
SVF/HS EXPECTING A DREAM
SVS CAPTAIN MORGAN 11Z
SOO LINE ROSE 1019

102

RF CENTERFIRE 370HOMO BLACK • HOMO POLLED PB
GNR 70L • BPG1442457 • JAN.7.2023

BW	Sep16	205Adj	365Adj
86	890	688	1282

CE	BW	WW	YW	MILK	MCE	MWWT
12.0	1.7	81.1	118.0	17.5	5.2	58.1



370 is a long bodied, homo black Caliber son that started at just 86 lbs. He has extra hair and a big, stout hip and goes back to the Sadie cow family. A full sister sold to Riverside Farm in the Camrose Country Classic sale and has already calved and dropped a beautiful udder. Check out his epd's with 7 traits in the top 25% or better! A neat pedigree with Absolute on the dams side giving an added shot of calving ease.

Blacksand Sadie 4Z
Granddam of Lot 102

NGDB STRUCTURE 34D
S: RF CALIBER 014G
RF NOT JUST A FLIRT 404B

NCB COBRA 47Y
NGDB LOUISE 411 B
SVS CAPTAIN MORGAN 11Z
RF CERTAINLY FLIRTIN 202Z

WFL ABSOLUTE 51Y
D: RF/CD SADIE 9134G
BLACKSAND SADIE 4Z

LFE STRAIT UP 454W
WFL MS BLACK FLASH 8068U
HART ALL IN W382
BLACKSAND LINETTE 854U

103

RF ARROW 340HETERO BLACK • HOMO POLLED PB
GNR 40L • BPRS1434610 • JAN.2.2023

BW	Sep16	205Adj	365Adj
99	984	749	1469

CE	BW	WW	YW	MILK	MCE	MWWT
7.0	3.7	89.6	138.9	23.4	2.2	68.2

R PLUS YUMA 9087G
S: RF NO LIMITS 1112J
RUST MISS 6217DNCB COBRA 47Y
D: DEEG MS ARROW 66F
DEEG MS 130DR PLUS 5015C
MISS R PLUS 3007A
WS STEPPING STONE B44
TNT MISS W31
LFE VIPER 455U
NCB MISS DREAM 22T
RRAR MOTIVE 14B
SPRINGCREEK ARROW 150B

RF Arrow 340 is one of the biggest hipped bulls in the pen and will be one of the first sons to sell by RF No Limits. No Limits was the \$90,000 high seller two year ago to LA Ranch and Bar M in BC and has gone on to sire numerous division and jackpot winners on the show road last fall and sons will highlight many bull pens this spring. 340's dam is a massive bodied, feminine fronted Cobra daughter with an impeccable udder. She was a Friday Night Lights purchase from the Deeg program and is always a favorite on pasture tours in the summer. 340 is a great haired bull that stands on a solid square foot, which we think will be a legacy of his sire.

RF No Limits 1112J
Sire of Lots 103 & 104Deeg Ms Arrow 66F
Dam of Lot 103

RF Infinite 376 is another No Limits son that is soggy made and big ribbed. He's an et calf out of the great 850F donor that had 4 feature sons sell in last years sale that included our high seller, RF Boomer, that sold to Canadian Sires and is now walking the pastures at Double Bar D. His first calf crop is hitting the ground and they are an exciting set of babies with moderate bw's, great hair and tons of vigor. Other 850F sons sold to Riverside Farms, Lyseng Land and Cattle and T8 Ranch and a full sister was a \$62,000 Friday Night Lights heifer to Twin Springs and Black Gold Simmentals. You will see more 850F progeny in the future and she is worth seeing if you come for a tour. She is one of the tankiest cows we've ever flushed and will have a major influence going forward.

RF Flirt 850F
Dam of Lot 104

104

RF INFINITE 376HETERO BLACK • HOMO POLLED PB
GNR 76L • BPTG1428528 • JAN.9.2023

BW	Sep16	205Adj	365Adj
92Et	928	773	1402

CE	BW	WW	YW	MILK	MCE	MWWT
5.5	3.7	90.7	134.7	28.2	-1.8	73.6

R PLUS YUMA 9087G
S: RF NO LIMITS 1112J
RUST MISS 6217DWFL WESTCOTT 24C
D: RF FLIRT 850F
RF NOT JUST A FLIRT 404BR PLUS 5015C
MISS R PLUS 3007A
WS STEPPING STONE B44
TNT MISS W31
TNT 90 PROOF Z401
WFL SWEET LICIOUS 1044X
SVS CAPTAIN MORGAN 11Z
RF CERTAINLY FLIRTIN 202Z

105

RF MAGNIFIED 3114HOMO BLACK • HOMO POLLED PB
GNR 114L • BPG1442463 • JAN.21.2023

BW	Sep16	205Adj	365Adj
86	870	760	1312

CE	BW	WW	YW	MILK	MCE	MWWT
9.5	1.8	74.2	110.9	20.5	4.1	57.6



Magnified 3114 is the lone bull in our pen by Magnitude as we were heavy on heifer calves by him last year and they are an exciting group. Magnitude sold to Wallgren Farms and Clifford Land and Cattle two years ago and we ai'd a big portion of our second calvers to him last year and will have quite a few sons for next year. 3114 is a long bodied bull with a deep hind quarter and started with a moderate 86 lb bw. There is a lot of calving ease in the Magnitude calves and adding his Stepping Stone dam to the pedigree increases that without sacrificing performance. Maternal brothers are working

for Rocking Heart/Westbrook, Portage Creek Simmentals in Manitoba and another daughter sold to Foresee Simmentals in the Camrose Country Classic Sale.



RF Sheila 023H
Maternal Sister to Dam of Lot 105



RF Magnitude 1178J
Sire of Lot 105

RF CAPACITY 742E
S: RF MAGNITUDE 1178J
RF FLIRT 434B

WFL WESTCOTT 24C
RF FAMOUS 409B
MR HOC BROKER
TLG FLIRTIN WITH YOU

WS STEPPING STONE B44
D: MADER SHEILA 39F
LFE BS SHEILA 82A

W/C LOCK DOWN 206Z
WS MS UPGRADE Z15
LFE THE DARK NIGHT 350U
LFE BS SHEILA 136T



Rancier Farms implements a comprehensive herd health program developed with Lacombe Veterinary Centre. The cows and bulls are all SelectVac GOLD+ verified. The bulls are fully vaccinated with a modified live respiratory and 8way clostridial vaccines and receive an internal/external parasite control program. A breeding soundness evaluation, including semen testing, is performed on all the bulls. Skylar Bieleny, DVM"



It is such a pleasure to be working with the Rancier family who are so dedicated to the cattle industry. The Rancier bull pen is a must see; the bulls are always so impressive, and a tour of the cowherd will have you quickly seeing why it is one of the best in Canada.

The bull feeding program is built to maximize forage utilization and gut health; they are developed on grass with their moms on a strict mineral program. All the forages are sampled and analyzed to ensure quality forages are used. Once the calves are weaned, they are slowly moved onto a balanced TMR.

The bulls are challenged with a forage-based TMR to help them develop and express their genetic potential. Matching suitable protein sources with proper starch is key to promoting lean muscle growth. Organic minerals are used to ensure proper immune function and overall health. If you have any questions about the nutrition program, please feel free to reach out. Buy with confidence knowing the bulls have been developed on a balanced nutrition program. Best of luck on sale day!



Tom McNeely
Co-Founder

(780) 679-7220

tomj.mcneely@bullseyefeeds.ca

© More Than Just Feed

106

RF BOONE PICKENS 337HETERO BLACK • HOMO POLLED PB
GNR 37L • BPTG1428230 • JAN.1.2023

BW	Sep16	205Adj	365Adj
86ET	1045	789	1517

CE	BW	WW	YW	MILK	MCE	MWWT
12.0	1.8	69.4	112.0	17.4	2.8	52.1



337 is a big middled, stout hipped Boone Pickens son that started at just 86 lbs and posted a 1517 lb adj yw! This will be the last son to sell out of the great 2022 donor that has been one of the most influential donors in the breed. She has 85 progeny registered to her in Canada alone and has many more in the US and Australia. At last count, a couple years ago, she had 538 grand progeny in Canada and we expect that number has increased exponentially since then as there have been numerous sons used in purebred programs and daughters become embryo donors. Maternal sibs to 337 have consistently topped sales for ten years. A full brother to 337 is working at Rocking Heart and two more full sisters and 17 maternal sisters are retained in our herd. 337 is the kind of bull to build a herd of daughters with.

REMINGTON LOCK N LOAD 54U
S: TJSC BOONE PICKENS 46C
TJSC KNOCKOUT 121Y

WHEATLAND STOUT 930W
D: RF CERTAINLY FLIRTIN 202Z
RF FLIRTIN FOR CERTIN 37U

REMINGTON ON TARGET 2S
BAR 15 MISS KNIGHT78E-51G
TJSC OPTIMUS PRIME 12W
MISS KNOCKOUT 74T
WHEATLAND BULL 680S
WHEATLAND LADY 737 T
LFE STREET LEGAL 510S
TLG FLIRTIN WITH YOU



RF Certainly Flirtin 202Z
Dam of Lot 106



RF Certainly Flirtin 956G
Maternal Sister to Lot 106

107

RF STERLING 3122HOMO BLACK • HOMO POLLED PB
GNR 122L • BPG1442464 • JAN.25.2023

BW	Sep16	205Adj	365Adj
96	886	789	1442

CE	BW	WW	YW	MILK	MCE	MWWT
8.4	4.8	81.1	132.7	25.6	1.6	66.2



3122 is our lone Sterling son this year and is a big hipped, heavy haired bull. His sire, LRX Sterling, is owned with Canadian Sires and was at stud being collected as a yearling so we didn't get him until a little later but we have an awesome set of daughters in the replacement pen and we will have more calves born this year. 3122's dam never misses and produced our high selling halfblood bull to Labatte Simmentals/Oberle for \$45,000 last year and another son is working for Mike Fawcett. We are also flushing a full sister to his dam, 850F, and she produced last years high seller, RF Boomer, who sold to Canadian Sires and is now walking the pastures at Double Bar D Farms.

LFE STRATTON 3094F
S: LRX STERLING 46J
LRX BLACK 29D

WFL WESTCOTT 24C
D: RF FLIRTIN 7103E
RF NOT JUST A FLIRT 404B

LFE TRIUMPH 816A
LFE RS AMBER 2140B
SPRINGCREEK LINER 104S
LRX RED 111U
TNT 90 PROOF Z401
WFL SWEET LICIOUS 1044X
SVS CAPTAIN MORGAN 11Z
RF CERTAINLY FLIRTIN 202Z



RF Flirt 850F
Full Sister to the dam of Lot 107



LRX Sterling 46J
Sire of Lot 107

108

RF BANKER 3151HETERO BLACK • HOMO POLLED 3/4
GNR 151L • BPRS1442495 • FEB.16.2023

BW	Sep16	205Adj	365Adj
87	894	868	1466

CE	BW	WW	YW	MILK	MCE	MWWT
7.9	2.8	82.9	118.4	19.3	5.9	60.8



Banker 3151 is a mid February born blaze faced $\frac{3}{4}$ blood bull by our Ultra Bank Note bull. He's deep sided, started at just 87 lbs and has the perfect money strip on his head without any other extra white. His dam is a red Hitman daughter that came to use out of the SIBL Half the Herd sale as a calf and is a moderate framed, big bodied, strong footed cow with a different twist to her pedigree. Don't miss this smooth made, light birthweight bull because of his age.

BROOKING BANK NOTE 4040
S: ULTRA BANKNOTE 59H
TRIPLE ROSE CYPRESS

CONNEALY EARNAN 076E
E A ROSE 918
SPRINGCREEK LOTTO 52Y
MS MAXIE LOU M112S

R PLUS HITMAN 4194B
D: BLI FELICIA 817F
MISS R PLUS 59X

R PLUS RELOAD 2006Z
MISS R PLUS 79X
R PLUS REDGE 8018U
KOP MS KODIAK 136U

109

RF ROPER 386HETERO BLACK • HOMO POLLED PB
GNR 86L • BPTG1428540 • JAN.11.2023

BW	Sep16	205Adj	365Adj
106 ^{ET}	936	793	1403

CE	BW	WW	YW	MILK	MCE	MWWT
9.6	4.2	94.8	147.3	25.1	3.1	72.5



A pair of hetero black, homo polled full brother flush mates that have extra length and thickness. They are sired by the \$110,000 SVS Rancher and their dam is a full sister to the \$62,000, RF Flirt 827F. Their donor dam is a solid black cow with a picture perfect udder and a big square foot that is out of the 404B donor, which also makes her a maternal sister to Caliber. Adding Ranchers dam, the great Sammie donor, only increases the maternal power and predictability to these two bulls. A couple full sisters to these brothers were feature Flirt heifers at the Family Matters Sale for Hoegl/Greenwood to Sunny Valley/Deeg and Double RN this past summer

SVS TYCOON 841F
S: SVS RANCHER 42H
HLTS SAMMIE

TJSC BOONE PICKENS 46C
D: RF FLIRT 8119F
RF NOT JUST A FLIRT 404B

SVS BROOKS 669D
SVS RED ANNIE 411B
WS BEEF KING W107
BRANT DONT YA LOVE ME
REMINGTON LOCK N LOAD 54U
TJSC KNOCKOUT 121Y
SVS CAPTAIN MORGAN 11Z
RF CERTAINLY FLIRTIN 202Z



RF/Rust Flirt 827F
Full Sister to dam of Lots 109 & 110



SVS Rancher 42H
Sire of Lots 109 & 110

110

RF STOCKMAN 387HETERO BLACK • HOMO POLLED PB
GNR 87L • BPTG1428543 • JAN.12.2023

BW	Sep16	205Adj	365Adj
90 ^{ET}	1010	853	1319

CE	BW	WW	YW	MILK	MCE	MWWT
9.6	4.2	94.8	147.3	25.1	3.2	72.5

111

RF AMPLITUDE 3189HOMO BLACK • HOMO POLLED PB
GNR 189L • BPTG1442789 • JAN.18.2023

BW	Sep16	205Adj	365Adj
101 ^{ET}	986	853	1477

CE	BW	WW	YW	MILK	MCE	MWWT
7.0	5.1	88.5	139.6	15.2	1.6	59.5



RF Amplitude 3189 is a homo black big hipped, deep bodied, stout topped bull that has extra length. His dam is a full sister to the great 404B cow which is most recently known as the dam of Caliber. We unfortunately lost 625D but she was a massive bodied, big hipped, impeccable uddered cow. A son sold to Rick and Kathryn Hagel and a full sister to 3189 is retained in the replacement pen. We have gone back and used Capacity again

RF Flirt 625D
Dam of Lot 111

as we can't have enough Capacity daughters in our herd. They're awesome uddered, big bodied, efficient, producing females that never miss. This is the kind of bull that will sire steers that will push the scale down hard and will leave you a set of easy doing daughters the industry craves.

WFL WESTCOTT 24C
S: RF CAPACITY 742E
RF FAMOUS 409BTNT 90 PROOF Z401
WFL SWEET LICIOUS 1044X
SVS CAPTAIN MORGAN 11Z
RF FAMOUS 127YSVS CAPTAIN MORGAN 11Z
D: RF CERTAINLY FLIRTIN 625D
RF CERTAINLY FLIRTIN 202ZHARVIE JDF WALLBANGER111X
SUNNYVALLEY BLK JENNA 88U
WHEATLAND STOUT 930W
RF FLIRTIN FOR CERTIN 37U

112

RF CAPACITY 3186HETERO BLACK • HOMO POLLED PB
GNR 186L • BPTRS1442794 • JAN.16.2023

BW	Sep16	205Adj	365Adj
115 ^{ET}	842	728	1314

CE	BW	WW	YW	MILK	MCE	MWWT
8.3	4.1	88.5	137.7	21.3	2.2	65.6

WFL WESTCOTT 24C
S: RF CAPACITY 742E
RF FAMOUS 409BRUST BREAKTHROUGH 4043
D: RF FLIRT 8120F
RF NOT JUST A FLIRT 404BTNT 90 PROOF Z401
WFL SWEET LICIOUS 1044X
SVS CAPTAIN MORGAN 11Z
RF FAMOUS 127YS A V HARVESTOR 0338
TNT MISS W31
SVS CAPTAIN MORGAN 11Z
RF CERTAINLY FLIRTIN 202Z

A couple years ago we sold an ET bull named Magnitude with a 118 lb bw because we knew that his birthweight wasn't due to genetics but mostly due to being an ET calf. Two years later, we have ai'd the majority of our second calvers to Magnitude and he calves well enough that he could just about be a heifer bull. I'm not saying these two bulls are heifer safe but I am saying that I do have a lot of faith that their CE epd ranking them above average in the breed is likely more representative of how they'll breed than what their actual birthweight shows. They are a soggy pair of Capacity sons and their dam's first calf was a \$30,000 Friday Night Lights heifer to Rust's in North Dakota and has become a donor in their program and her second calf was a Pure Gold son to Rick Kendall. If you want to add some softness and pounds to a calf crop and leave an awesome set of daughters check these two brothers out.

RF Flirt 8120F
Dam of Lot 112 & 113

113

RF CAPACITY 3190HETERO BLACK • HOMO POLLED PB
GNR 190L • BPTRS1442796 • JAN.20.2023

BW	Sep16	205Adj	365Adj
110 ^{ET}	1040	907	1504

CE	BW	WW	YW	MILK	MCE	MWWT
8.3	4.1	88.5	137.7	21.3	2.2	65.6

114

RF WARRIOR 3139

HETERO BLACK • HOMO POLLED PB
GNR 139L • BPG1442494 • FEB.4.2023

BW	Sep16	205Adj	365Adj
70	762	771	1401

CE	BW	WW	YW	MILK	MCE	MWWT
13.0	0.6	84.2	128.8	21.1	5.5	63.2



HART STATE OF WAR 056C
S: ROBB WARRIOR 91H
LRX BLACK 89F

IPU BENTLEY 81F
D: RF FLIRT 162J
RF CERTAINLY FLIRTIN 202Z

WELSH'S WARSAW 312Z
HART MISS 102A
SKORS HIGH ROLLER 34C
LRX BLACK 51D
WHEATLAND BENTLEY 630D
CLAYHILL FANCY LUCA 39A
WHEATLAND STOUT 930W
RF FLIRTIN FOR CERTIN 37U



RF Flirt 162J
Dam of Lot 114



RF Certainly Flirtin 202Z
Granddam of Lot 114

A big time, February born calving ease prospect out of one of the very favorite first calf heifers last year. His Flirt dam is a big volume, moderate framed, awesome uddered, easy fleshing female that is the front pasture kind and is destined for the donor pen. Being a direct 202Z daughter doesn't hurt either and there is 4 generations of donor cows on the bottom side of her pedigree. Starting with just a 70 lb birth-weight and exploding to a 1400 lb adj yw makes him a calving ease prospect that won't sacrifice performance. His epd's verify it, putting him in the top 10% of the breed for CE and BW, top 30% for WW, YW and MCE, top 10% for API and TI and as a bonus he ranks in the top 1% for docility. We offered some semen on Warrior at the New Years Resolution sale and it brought \$475/ straw. 3139 adds one more great cow to the pedigree.

115

RF WARRIOR 3135

HOMO BLACK • HOMO POLLED 3/4
GNR 135L • BPRS1442493 • FEB.1.2023

BW	Sep16	205Adj	365Adj
82	880	872	1498

CE	BW	WW	YW	MILK	MCE	MWWT
13.8	1.0	89.4	140.7	26.5	6.8	71.2



HART STATE OF WAR 056C
S: ROBB WARRIOR 91H
LRX BLACK 89F

PF OKLAHOMA 6625
D: RF CERTAINLY FLIRTIN 1115J
RF CERTAINLY FLIRTIN 956G

WELSH'S WARSAW 312Z
HART MISS 102A
SKORS HIGH ROLLER 34C
LRX BLACK 51D
V A R DISCOVERY 2240
PF 5682 HENRIETTA PRIDE 0533
RF CAPACITY 742E
RF CERTAINLY FLIRTIN 202Z



RF Flirt 1115J
Dam of Lot 115



RF Certainly Flirtin 956G
Granddam of Lot 115

We can't say enough good things about the Warrior sire group. He calves like a dream on heifers, they're vigorous at birth, they grow quick and he leaves an awesome set of sons and daughters that have some muscle and substance to them. This 3/4 blood Warrior son has calving ease on both sides of his pedigree through his Oklahoma sired dam which was the first calf out of the \$110,000 2/3 interest RF Certainly Flirtin 956G cow that sold at the Jenna/ Flirt event to Double Bar D Farms. Check out the epd's on 3135 too! He's above average in 12/13 traits and ranks in the top 15% or better in 8! If you want a bull that will calve easy, give you calves that will grow and push the scales down in the fall and still leave you a set of daughters you'll drool over, check out this February born Warrior son!

116

RF WARRIOR 306HOMO BLACK • HOMO POLLED PB
GNR 6K • BPG1433752 • DEC.22.2022

BW	Sep16	205Adj	365Adj
89	982	817	1481

CE	BW	WW	YW	MILK	MCE	MWWT
11.2	3.1	96.0	146.7	27.2	6.6	75.2



Bulls like 306 are the reason that we bred so many heifers back to Warrior again. He was born 9 days early and unassisted out of a first calf heifer at 89 lbs and on Sept 16 he weighed in at 982 lbs and continued on to a 1481 lb adj yw! Even better is that the Warrior daughters in the replacement pen are a feminine fronted set of heifers with performance, body and balance. 306 is a deep sided, smooth made bull out of a nice young Yuma daughter with a great udder.



Robb Warrior 91H
Sire of Lot 114-117

HART STATE OF WAR 056C
S: ROBB WARRIOR 91H
LRX BLACK 89F

WELSH'S WARSAW 312Z
HART MISS 102A
SKORS HIGH ROLLER 34C
LRX BLACK 51D

R PLUS YUMA 9087G
D: RF JENNA 1016H
SVS BLK JENNA 707E

R PLUS 5015C
MISS R PLUS 3007A
RF MERCHANT 481B
SVS BLK JENNA 42A

117

RF WARRIOR 307HETERO BLACK • HOMO POLLED PB
GNR 7K • BPG1434214 • DEC.22.2022

BW	Sep16	205Adj	365Adj
69	828	672	1326

CE	BW	WW	YW	MILK	MCE	MWWT
13.3	-0.4	71.8	106.5	21.7	6.4	57.6



Not very often do you get a birthweight under 70 lbs and still push down the scale over 800 lbs mid September out of a heifer but 307 did just that. He's a short gestation, smooth made bull with some muscle shape out of a moderate framed red first calf heifer. He is double bred calving ease and boasts a -0.4 BW epd ranking him in the top 4% of the breed and his CE epd is in the top 10%. We are getting our second set of Warrior calves this year and they are coming easy and early. He really is a sleep easy heifer bull.

HART STATE OF WAR 056C
S: ROBB WARRIOR 91H
LRX BLACK 89F

WELSH'S WARSAW 312Z
HART MISS 102A
SKORS HIGH ROLLER 34C
LRX BLACK 51D

BLACK GOLD APPROVAL 71E
D: TWIN SPRINGS MISS RED 1J
BLACK GOLD/RUST MISS RED 326

W/C LOADED UP 79C
RF CERTAINLY FLIRTIN 532C
NUG ROYAL RED 324A
RUST MISS 501C

118

RF GUARDIAN 301HETERO BLACK • HOMO POLLED PB
GNR 1K • BPRS1428220 • DEC.22.2022

BW	Sep16	205Adj	365Adj
81	992	801	1473

CE	BW	WW	YW	MILK	MCE	MWWT
11.2	1.7	93.4	139.6	28.5	7.9	75.2



The Guardian bulls were popular last year for their curvebending ability to come light and early but still grow fast and wean heavy, out of heifers. What makes them even more appealing is the set of two year old Guardian daughters we have calving right now. They're calving awesome, have tidy udders and are making great cows. 301 is a light birthweight, short gestation bull out of a red, first calf Betts daughter that goes back to the great Cheyenne cow on the bottom side. Check out his epd's with 12/13 traits above average and all but one is top 25% or better.



LRX Cheyenne 14U
Dam of Lot 118

HOOK'S BEACON 56B
S: CLRS GUARDIAN 317G
CLRS ALWAYS XCELLENT

HOOKS SHEAR FORCE 38K
HOOKS ZAFIRAH 41Z
MCM TOP GRADE 018X
HOOK'S XCELLENCE 87X

SVS BETTS 808F
D: RF CHEYENNE 1170J
LRX CHEYENNE 14U

BGS/BM CAPTAIN SCREAM 63D
WFL RED SAGE 506C
TNT TOP GUN R244
LRX ASHES 102P

119

RF GUARDIAN 321HETERO BLACK • HOMO POLLED PB
GNR 321K • BPRS1434229 • DEC.27,2022

BW	Sep16	205Adj	365Adj
82	996	792	1560

CE	BW	WW	YW	MILK	MCE	MWWT
10.9	1.8	97.7	153.4	28.4	5.9	77.3



321 is another typical Guardian son with his extra length and smoothness. He came early, started at just 82 lbs, was 996 lbs mid Sept off his first calf dam and posted a 1560 lb adj YW! His Yuma dam did a whale of a job and she has two maternal brothers that are working at ALTA Genetics and the other at Pheasantdale Simmentals. Two maternal sisters have sold at Friday Night Lights as well.

RF Flirt 614D
Granddam of Lot 119

HOOK'S BEACON 56B
S: **CLRS GUARDIAN 317G**
CLRS ALWAYS XCELLENT

HOOKS SHEAR FORCE 38K
HOOKS ZAFIRAH 41Z
MCM TOP GRADE 018X
HOOK'S XCELLENCE 87X

R PLUS YUMA 9087G
D: **RF FLIRT 190J**
RF FLIRT 614D

R PLUS 5015C
MISS R PLUS 3007A
SVS CAPTAIN MORGAN 11Z
RF FLIRT 206Z

120

RF SAFEGUARD 3106HOMO BLACK • HOMO POLLED 3/4
GNR 106L • BPRS1442461 • JAN.15,2023

BW	Sep16	205Adj	365Adj
64	932	862	1368

CE	BW	WW	YW	MILK	MCE	MWWT
15.2	-2.8	84.2	123.5	30.1	8.4	72.2



RF Safeguard 3106 is triple bred calving ease bull and his numbers show it, but he still doesn't give up any ground in performance. He is long and smooth made with loads of extension and style. You will find impeccable uddered, cows on the bottom side of his pedigree as far you can go. Big time calving ease sires like Guardian, Gold Key, Limitless, Beacon, Motive and Final Answer line his pedigree and lock in calving ease. His EPD's tell the same story with 12 of 13 traits above average and an incredible set across the board.

RF Rose 9130G
Granddam of Lot 120

HOOK'S BEACON 56B
S: **CLRS GUARDIAN 317G**
CLRS ALWAYS XCELLENT

HOOKS SHEAR FORCE 38K
HOOKS ZAFIRAH 41Z
MCM TOP GRADE 018X
HOOK'S XCELLENCE 87X

WHL GOLD KEY 1619D
D: **RF ROSE 1001H**
RF/CD ROSE 9130G

HOOKS SHEAR FORCE 38K
CMS SODA POP 417B
WHF LIMITLESS B011
RUST MISS ROSE 7305E



121

RF TRIUMPH 316HOMO BLACK • HOMO POLLED 1/2
GNR 16K • BPRS1438641 • DEC.24.2022

BW	Sep16	205Adj	365Adj
80	960	767	1479

CE	BW	WW	YW	MILK	MCE	MWWT
12.1	1.6	85.5	132.4	20.1	3.0	62.9



A smooth, long made, low birthweight Triumph halfblood bull. His dam is another Bentley first calf heifer out of the great 2022 donor cow. Some of the great cows in both the Simmental and Angus breed like the Flirts, Chloe's and Donna's are in the pedigree of 316 loading him up with maternal greatness. 316 started at just 80 lbs, weaned off a first calf heifer at 826 lbs and posted a 1479 lb adj YW. A bull that truly offers calving ease, performance and cow power all in one genetic package.

COLEMAN BRAVO 6313
S: COLEMAN TRIUMPH 9145
LAWSON'S CHLOE C815

IPU BENTLEY 81F
D: RF FLIRT 1102J
RF CERTAINLY FLIRTIN 202Z

COLEMAN CHARLO 0256
COLEMAN DONNA 714
S A V RENOWN 3439
LAWSON'S CHLOE Z341
WHEATLAND BENTLEY 630D
CLAYHILL FANCY LUCA 39A
WHEATLAND STOUT 930W
RF FLIRTIN FOR CERTIN 37U



RF Flirt 1102J
Dam of Lot 121



RF Certainly Flirtin 202Z
Granddam of Lot 121

122

RF TRIUMPH 330HOMO BLACK • HOMO POLLED 1/2
GNR 330K • BPRS1438480 • DEC.31.2022

BW	Sep16	205Adj	365Adj
72	916	730	1423

CE	BW	WW	YW	MILK	MCE	MWWT
9.6	1.6	80.8	126.1	21.1	4.1	61.5



Another short gestation, homo polled and black, halfblood Triumph son. He was born on New Years Eve out of a first calf Structure daughter that did a whale of a job on him with a mid Sept weight of 916 lbs. His hard working dam is a feminine fronted cow with a tidy udder and nice teat size and placement. His grand dam is a full sister to RF Captain Black that was used by so many breeders across the country and left great daughters everywhere he was used. Check out this great haired, soggy made halfblood bull on sale day.

COLEMAN BRAVO 6313
S: COLEMAN TRIUMPH 9145
LAWSON'S CHLOE C815

NGDB STRUCTURE 34D
D: RF FLIRT 182J
RF FLIRT 7104E

COLEMAN CHARLO 0256
COLEMAN DONNA 714
S A V RENOWN 3439
LAWSON'S CHLOE Z341
NCB COBRA 47Y
NGDB LOUISE 411 B
SVS CAPTAIN MORGAN 11Z
TLG FLIRTIN WITH YOU



Coleman Triumph 9145
Sire of Lots 121, 122, 129



Lawson's Chloe C815
Dam of Coleman Triumph

123

RF MARAUDER 348

HOMO BLACK • HOMO POLLED 1/2
GNR 48L • BPRS1440312 • JAN.3.2023

BW	Sep16	205Adj	365Adj
94	1110	856	1579

CE	BW	WW	YW	MILK	MCE	MWWT
7.5	3.5	94.3	150.1	23.6	5.8	70.8



This is another bull that is never missed in the pen and we think you'll like him better than his picture. A good friend that has been buying halfblood bulls asked us to use Firebrand again because he loved his Firebrand sons so much. We opted to add another great cow to the pedigree by using Mercury, a Firebrand son out of the great Brooking Beauty 333 cow. Adding more great cows to a pedigree never hurts and stacking those genetics on the Famous cow family should really provide tons of maternal power along with real performance. With an actual Sept 16 weight of 1110 lbs and an adj yw of 1579 lbs. He's big and soggy, has awesome hair, and has the added presence and style that commands a premium when you're selling your calves. Make sure you watch this bulls video or find him in the pen because we think you'll like him even more than his picture.

BROOKING FIREBRAND 6068
S: BROOKING MERCURY 9057
BROOKING BEAUTY 333

NGDB STRUCTURE 34D
D: RF FAMOUS 924G
RF FAMOUS 409B

BROOKING BANK NOTE 4040
BROOKING ANNIE K 390
S A V HARVESTOR 0338
TLA BEAUTY 6R
NCB COBRA 47Y
NGDB LOUISE 411 B
SVS CAPTAIN MORGAN 11Z
RF FAMOUS 127Y



RF Famous 409B
Maternal Granddam of Lot 123



Brooking Beauty 333
Paternal Granddam of Lot 123 & 124

124

RF MERCURY 368

HOMO BLACK • HOMO POLLED 1/2
GNR 68L • BPRS1442455 • JAN.7.2023

BW	Sep16	205Adj	365Adj
90	906	734	1404

CE	BW	WW	YW	MILK	MCE	MWWT
8.0	4.2	86.8	130.5	18.1	5.2	61.5



Mercury 368 is another homo black and polled halfblood Mercury son. This time out of the Bombshell cow family and combining the Screams through the great Captain Scream bull. He's a long, big hipped, high capacity bull that will add style, softness and hair to a calf crop. Just a 90 lb bw with a 906 lb actual weaning weight and continued on to a 1404 lb adj YW! His grand dam will be calving in February at ten years of age and looks as good as she ever has.

BROOKING FIREBRAND 6068
S: BROOKING MERCURY 9057
BROOKING BEAUTY 333

BGS/BM CAPTAIN SCREAM 63D
D: RF BOMBHELL 139H
IRCC BOMBHELL 418B

BROOKING BANK NOTE 4040
BROOKING ANNIE K 390
S A V HARVESTOR 0338
TLA BEAUTY 6R
SVS CAPTAIN MORGAN 11Z
RF SCREAM 215Z
MR HOC BROKER
IRCC WISH LIST 923W



IRCC Bombshell 418B
Granddam of Lot 124

125

RF LIT UP 357

BLACK ANGUS PB

GNR 57L • 2340343 • JAN.5.2023

BW Sep16 205Adj 365Adj

96ET 1035 854 1575

CE BW WW YW MILK MCE

-1.0 3.6 60.0 105.0 26.0 6.0



RF Lit Up 357 combines presence and performance in a stunning package that always grabs your attention. He's big hiped, holds his head high and proud, has a big, bold, deep rib and is extremely docile. In terms of performance he hits it out of the park pushing down the scale hard on Sept 16 at 1035 lbs and posting a 1575 lb adj YW! His dam is a beautiful uddered, powerhouse Ajax cow and is the only daughter that has been sold out of the great LFE Jennifer 10C donor cow at Lewis Farms. She was an Angus

Collections purchase with Canadian Donors and Packet Brothers at \$31,000. 10C is a cornerstone donor cow in the LFE program with 32 progeny registered to her name and many feature bulls selling through their sale. His sire, Emerald, was a \$94,000 high seller in the Rose Bowl sale and is a son of the exciting Beauty 6051 donor. We liked Brooking Beauty 6051 so much that we partnered with Maxwells and Canadian donors on a high selling daughter and you will hear a lot about her in the future. Our Angus program isn't huge, but it is built around great cows, and bulls like this are exactly what we are striving to produce.



Brooking Beauty 6051
Paternal Granddam of Lot 125



LFE BA Jennifer 29J
Dam of Lot 125 & 126

S A V RENOVATION 6822
S: BROOKING EMERALD 9179
BROOKING BEAUTY 6051

S A V AJAX 8885
D: LFE BA JENNIFER 29J
LFE BA JENNIFER 10C

S A V RENOWN 3439
S: COLEMAN GLACIER 041
COLEMAN DONNA 439

S A V AJAX 8885
D: LFE BA JENNIFER 29J
LFE BA JENNIFER 10C

S A V RENOWN 3439
S A V MADAME PRIDE 0151
BROOKING BANK NOTE 4040
SOO LINE BEAUTY 1027
S A V CUTTING EDGE 4857
S A V EMBLYNETTE 2369
R B ACTIVE DUTY 0010X
LFE BA JENNIFER 66A

RITO 707 OF IDEAL 3407 7075
S A V BLACKCAP MAY 4136
GDAR GAME DAY 449
COLEMAN DONNA 714

S A V CUTTING EDGE 4857
S A V EMBLYNETTE 2369
R B ACTIVE DUTY 0010X
LFE BA JENNIFER 66A



The Glacier sire group are an exciting set and this is an exclusive chance to acquire one. 395 is a soggy made high performance bull with a pedigree loaded with great cows. Check out his EPD's ranking him in the top 8% for WW and top 10% for YW and his actual performance numbers verify it with a 942 lb mid Sept weight and carrying on to a 1469 lb adj YW! Glacier was the \$270,000 for ¼ interest high seller at Colemans in Montana and his dam is the legendary Coleman Donna 439. 395 is another son of the 29J donor that we are excited about that is off to a great start of doing big things in our program.



Coleman Glacier 041
Sire of Lot 126

126

RF GLACIER 395

BLACK ANGUS PB

GNR 95L • 2342220 • JAN.13.2023

BW Sep16 205Adj 365Adj

98ET 942 801 1469

CE BW WW YW MILK MCE

4.5 2.0 71.0 121.0 28.0 8.0

127

RF/CD/P DUKE 3137

BLACK ANGUS PB

GNR 137L • 2349400 • FEB.03.2023

BW	Sep16	205Adj	365Adj
90	766	780	1406

CE	BW	WW	YW	MILK	MCE
0.5	3.3	58.0	100.0	29.0	5.1



3137 is the natural calf off the 29J cow as a first calf heifer. She's a bold sprung, deep ribbed female with a beautiful udder and a feminine front. Her grand dam is the 10C donor at Lewis's with 32 progeny registered to date. His sire, Brooking The Duke 0186, is a Firebrand son from Brooking and out of the great SAV Duke Girl 8161 cow that has had an influence in both the Brooking and SAV herds.



LFE BA Jennifer 29J
Dam of Lot 127

BROOKING FIREBRAND 6068
S: BROOKING THE DUKE 0186
S A V DUKE GIRL 8161

BROOKING BANK NOTE 4040
BROOKING ANNIE K 390
S A V NET WORTH 4200
A C DUKE GIRL 57

S A V AJAX 8885
D: LFE BA JENNIFER 29J
LFE BA JENNIFER 10C

S A V CUTTING EDGE 4857
S A V EMBLYNETTE 2369
R B ACTIVE DUTY 0010X
LFE BA JENNIFER 66A

128

RF REVIVAL 309

BLACK ANGUS PB

GNR 9K • 2335955 • DEC.22.2022

BW	Sep16	205Adj	365Adj
68	830	667	1251

CE	BW	WW	YW	MILK	MCE
8.0	-1.0	54.0	98.0	23.0	11.0



WOODHILL RELEVANCE
S: WOODHILL REVIVAL H028
WOODHILL EVERGREEN A43-F039

BROOKING BANK NOTE 4040
D: KCH BEAUTY 912G
TLA BEAUTY 6R

CONNEALY CONFIDENCE PLUS
WOODHILL BLACKBIRD X197-Z7
BASIN PAYWEIGHT 1682
WOODHILL EVERGREEN Y10-A43

CONNEALY EARNAN 076E
E A ROSE 918
RR 7407 RAINMAKER 2154
TERRLENE BEAUTY 35F



KCH Beauty 912G
Dam of Lot 128

Another big time calving ease herd sire prospect that has added length and is smooth made. 309 is a short gestation bull that started with just a 68 lb bw that was the natural calf off the 912G donor cow and still posted an 830 lb mid Sept weight and ranks in the top 5% for BW and top 15% for CE. 912G is a Bank Note daughter out of the great TLA Beauty 6R cow that has had such an influence in the breed with 90 registered progeny. If you come for a tour make sure to see the two milking 912G daughters in the two year old pen.

129

RF TRIUMPH 345
BLACK ANGUS PB
KR 45L • 2342972 • JAN.3.2023

BW	Sep16	205Adj	365Adj
68	914	819	1484

CE	BW	WW	YW	MILK	MCE
6.0	0.9	69.0	117.0	21.0	7.0



RF Triumph 345 is another calving ease prospect that isn't hard to find in the pen. He's super fronted with length, muscle, style and smoothness. His dam was Kade's show heifer that he purchased from the great Greenwood program. She has turned into a beautiful cow with a superb udder and is a capacious, deep bodied female with a great front end. Great cows like Tibbie 28Z, Beauty 55E and 6R line the bottom side of his pedigree and legendary cows from the Coleman herd in Montana like Chloe C815 and Donna 714 on the top side fill his blood with maternal power. Triumph has worked extremely well in our heifer pen and we are very excited about the heifers in the replacement pen.

COLEMAN BRAVO 6313
S: COLEMAN TRIUMPH 9145
LAWSON'S CHLOE C815

GREENWOOD GUNSLINGER JJP 73G
D: GREENWOOD BEAUTY JJP 15J
GREENWOOD BEAUTY JJP 55E

COLEMAN CHARLO 0256
COLEMAN DONNA 714
S A V RENOWN 3439
LAWSON'S CHLOE Z341
HOOVER NO DOUBT
RRD TIBBIE 28Z
BROOKING BANK NOTE 4040
TLA BEAUTY 6R



Greenwood Beauty JJP 15J
Dam of Lot 129

130

RF FAMOUS 3332
BLACK ANGUS PB
BOHR 332L • 2329616 • FEB.2.2023

BW	Sep16	205Adj	Jan4
90	824		1135

CE	BW	WW	YW	MILK	MCE
3.0	2.8	73.0	128.0	26.0	5.5



3332 is a smooth made, balanced bull and the natural calf off the great Ms Instinct 9292 donor. 9292 carries the classic Ms Instinct phenotype as she is deep bodied, square and level at every angle and has super udder attachment with perfectly spaced teats. His sire is the \$40,000 HF Sold Out that is a Showman son out of the great Rosebud 246Z cow that has put sons into many great programs across the country.

SCHIEFELBEIN SHOWMAN 338
S: HF SOLD OUT 179J
HF ROSEBUD 246Z

BROOKING FIREBRAND 6068
D: ANCHORAGE MS INSTINCT 9292
RSKY 6540 MS INSTINCT 0065

SCHIEFELBEIN ATTRACTIVE 4565
FROSTY ELBA 3745
HF TIGER 5T
HF ROSEBUD 94P
BROOKING BANK NOTE 4040
BROOKING ANNIE K 390
DUFF BASIC INSTINCT 6501
RSKY 0108 MS MAGICIAN 6540



Anchorage Ms Instinct 9292
Dam of Lot 130

131

RF BUMPER CROP 3337

BLACK ANGUS PB

GNR 337L • 2349396 • JAN.19.2023

BW	Sep16	205Adj	365Adj
90	780	679	1414

CE	BW	WW	YW	MILK	MCE
4.5	0.8	56.0	104.0	28.0	6.5



3337 is a deep made, great haired, smooth shouldered bull. His dam is an Elite cow in the Canadian Angus Assoc and has a different twist to her pedigree with some older, proven genetics coming from the Timeless sire. She sold in the Circle G Dispersal and had a feature bull in their 2022 bull sale and is a highly productive cow with a great udder.

PEAK DOT TOPSOIL 151E
S: PEAK DOT TOPSOIL 355G
 PEAK DOT PANSY 56D

S A V TOPSOIL 4354
 JESSICA OF PEAK DOT 761Y
 HOOVER NO DOUBT
 PEAK DOT PANSY 753B

SINCLAIR TIMELESS 8BA4
D: CIRCLE G BLACKBIRD 706E
 CIRCLE G BLACKBIRD 556C

SINCLAIR IN TIME 6BT39
 SINCLAIR BLACKBIRD 2P8 7079
 BAR-E-L XCITEMENT 36X
 XO CROWFOOT BLACKBIRD 049X

132

RF MERCURY 3125

BLACK ANGUS PB

GNR 125L • 2340566 • JAN.28.2023

BW	Sep16	205Adj	365Adj
94	800	759	1407

CE	BW	WW	YW	MILK	MCE
-2.0	4.7	66.0	114.0	24.0	2.0



3125 RF Mercury 3125 is an attractive made, deep bodied, upheaded bull with loads of performance. His dam has a feature Caliber son in the halfblood pen as well and is a great footed, big hiped, moderate framed female. We loved our Firebrand progeny and liked the idea of adding the great Beauty 333 donor in Mercury's pedigree even more. Truly a pedigree loaded with our favorite cows in the Angus breed like Brooking Beauty 333, Soo Line Annie K 390, SAV Blackcap May 4136 three times, and EA Rose 918. Keep every daughter of this bull and enjoy selling a soggy, hairy, heavy set of steers!



KT Elba 368H
 Dam of Lot 132



Brooking Beauty 333
 Paternal Granddam of Lot 132

BROOKING FIREBRAND 6068
S: BROOKING MERCURY 9057
 BROOKING BEAUTY 333

BROOKING BANK NOTE 4040
 BROOKING ANNIE K 390
 S A V HARVESTOR 0338
 TLA BEAUTY 6R

S A V PRESIDENT 6847
D: KT ELBA 368H
 SIEBRING ELBA 400

COLEMAN CHARLO 0256
 S A V BLACKCAP MAY 4136
 S A V RESOURCE 1441
 S A V ELBA 900



133

RF KALISPELL 3304

BLACK ANGUS PB

GNR 304L • PENDING • JAN.02.2023

BW	Sep16	205Adj	Jan4
88ET	890		1300

CE	BW	WW	YW	MILK	MCE
					will have before sale day



RF Kalispell 3304 is a wide, big ribbed, attractive bull with loads of substance and is another son of the great 9292 donor. The 9292 donor is a special Firebrand daughter and out of the extremely productive Ms Instinct 0065. A full sister to 9292 was a \$42,000 Angus Collections high seller to KT Ranches and another daughter is working at Compass Ranch. 3304's sire, Glacier, has been a favorite of everyone that has seen him and his full sisters make him a must use sire. The Glacier calves have big time performance and he has some of the great cows in recent history in his pedigree. 3304 has a unique combination of calving ease, performance and maternal power all in one.

S A V RENOWN 3439
S: COLEMAN GLACIER 041
 COLEMAN DONNA 439

BROOKING FIREBRAND 6068
D: ANCHORAGE MS INSTINCT 9292
 RSKY 6540 MS INSTINCT 0065

RITO 707 OF IDEAL 3407 7075
 S A V BLACKCAP MAY 4136
 GDAR GAME DAY 449
 COLEMAN DONNA 714
 BROOKING BANK NOTE 4040
 BROOKING ANNIE K 390
 DUFF BASIC INSTINCT 6501
 RSKY 0108 MS MAGICIAN 6540



Anchorage Ms Instinct 9292
 Dam of Lot 133



RSKY Ms Instinct 065
 Granddam of Lot 133

134

RF EVERGREEN 3302

BLACK ANGUS PB

GNR 302L • 2349395 • JAN.02.2023

BW	Sep16	205Adj	365Adj
88ET	974	833	1445

CE	BW	WW	YW	MILK	MCE
3.5	1.7	66.0	110.0	24.0	6.5



RF Evergreen 3302 is a unique bull with loads of muscle shape, a masculine, attractive front end with tons of character and presence. His dam is a Coleman Navigator daughter and is a daughter of the great Beauty 5R donor, making her a maternal sister to Soo Line Motive. She has added muscle shape and is a balanced, extremely good uddered cow. A maternal sister by Bravo was a feature bred of the Beauty cow family at the Family Matters sale this past summer and sold to Justamere Farms. 3302 is another chance to get a son of the \$270,000, Coleman Glacier 041.

S A V RENOWN 3439
S: COLEMAN GLACIER 041
 COLEMAN DONNA 439

COLEMAN NAVIGATOR 614
D: COLEMAN BEAUTY 048
 TLA BEAUTY 5R

RITO 707 OF IDEAL 3407 7075
 S A V BLACKCAP MAY 4136
 GDAR GAME DAY 449
 COLEMAN DONNA 714
 COLE CREEK BLACK CEDAR 46P
 COLEMAN ERISKAY 291
 RR 7407 RAINMAKER 2154
 TERRLENE BEAUTY 35F



Glacier 041
 Sire of Lots 133 & 134

Rancier Farms
Box 569
Killam AB T0B 2L0

***Thank you to all our buyers and bidders.
We enjoy meeting our new buyers, and a special thanks to our repeat buyers.
Thank you for your continued confidence in our programs.
We all look forward to seeing you and visiting with you at the sale.***

Adair Ranch
Andres Stock & Seed
Beagle Simmentals
Black River Farms
Blair Anderson
Blomquist Inc.
Boulder Bottom Stock Farm
Brad Mohler
Brad Paulgaard
Brimacombe Family Farm LLP
Canadian Sires
Carter Renschler
Chris Bauer
Chris Bowman
Circle 7 Farms
Clark Larre
Clayton Davies
Dan Roth
Darryl Zimmer
David Johnson
David Mohr
DCL Farms - David Lidberg
Derek Sutter
Double KC Ranch
Dylan Laurenceson
Fallen Timber Farms
FERENCE Land & Cattle Co.
Fore See Cattle
Gary Cromarty

Glen Aldentaler
Glenholm Farms
Greenvally Ranch
H Bar M Land & Cattle Co.
H.A. Smith
Hays Land & Cattle
Hoegl Livestock
Indian River Cattle Company
James Matthews
Jason Becker
Jason Swainson
Jenner Colony
JK Bar Cattle
Joe Becker
Karvonen Land & Cattle Inc.
Kevin Porter
KSL Farms
KT Ranches
Labatte Simmentals
Lake Bend Land & Cattle
Laurenceson Farms
Lazy HE Ranching
LC Ranch
Lee Selte
Leedale Farming
Leighton Sorenson
Lyseng Land & Cattle
Mark Biggs

McL Farms Ltd.
MJM Enterprises
New Pine Colony
Nickel Farms
Paul Murray Farms
Portage Creek Simmentals
Prairie Skye Farms
Randy Geisler
Ribstone Farming
Rick & Diane Pochipinski
Riverside Farms
Robb Land & Cattle
Rocking Heart Range
Shane Stammers
Skywest Simmentals
Small Ranch
Spring Lake Simmentals
Still Water Ranches
T8 Ranch
Thompson Cattle Company Ltd.
Tony Rustemeier
Wayne Trenerry
Westman Farms
Whitewood Ranch
Wills Land & Cattle
Wilson Colony
Wittmack Farms
Woodhall Farms Ltd.
Woywitka Farms

MAXWELL SIMMENTALS - RANCIER FARMS

ANNUAL BULL SALE

FRIDAY • FEBRUARY 23 2024 • 1:00 PM

CAMROSE ALBERTA
