

35th Anniversary

**MADER**  
*Ranches*

**BULL  
POWER** SALE

**FRIDAY, FEBRUARY 16th, 2024**  
**1 PM: AT THE RANCH, CARSTAIRS, AB**



As I sit here and write this, we have just witnessed an unusually beautiful fall and beginning of winter, with very mild weather, and little to no snow! Perfect conditions for feed to be made, crops to come off, and what a treat to sit back, and watch record setting cattle prices! As we wrap up the catalogue here, we are seeing some real chilly temperatures as we dive into calving, thank goodness for barns, especially if you're brave enough to calve in January! We anxiously await what is said to be another all time high of a year for the cattle market, and we hope all of our customers are able to benefit from it, and push forward to continue making this industry one of the best! An industry that feeds the world, one that teaches our kids proper values, and one that allows our families to continue to do what we all love!

Every year faces us all with challenges and hard decisions based on what this crazy world or the weather dictates for us, but one variable we can still control is the quality of seedstock we produce, and the quality of bull you will breed to your cowherd, to increase your consistency and profitability, and ease your workload. Today's breeding decisions on all of our herds will further excel our product, our marketability, and our bottom line, as we see the increase in demand for our beef product. Finding the right bull to fit your needs is what we do, and we are here to visit at any time, to ensure your needs are fulfilled. Buying a bull is more than waving your hand in the air, it is building a relationship with a breeder that will stand behind his product, one who will guide you in a direction that benefits your herd, and one that knows your success is their success! The people you visit with at Mader Ranches, are the same people who do the day to day operations on this farm, we are the ones who know these bulls the best as we have been alongside them since birth, and we are also the ones who believe in honesty and integrity, and still honor a good old fashioned handshake! We will be upfront in helping you sort through the bulls, to find a bull(s) that best meets your requirements and budget.

The 2024 bull sale offering is a strong one! Through an extensive AI and embryo program, and strong walking herdbulls, we feel we have sourced the most practical and profitable genetics for you, our customers! Building a foundation for a cowherd does not come overnight, and it is something we have, and will continue to push hard at for years to come! Cows that are superior in udder and foot quality, and are naturally easy fleshing, are the type that we work hard to produce. Our cows are not pampered, they graze for many months of the year, and never see any grain. These bulls are grown out on a high forage diet, with functionality and longevity as the forefront. You will find bulls around the country that weigh more based on higher starch diets, but our goal is to develop these bulls, not fatten them. Their job is to be able to service cows for our customers, and in order to do so, they need to grow out to a maturity level where they can continue to excel once they hit green grass, not to melt away the feed that was put into them. Large sire groups or multiple flushmates for our customers to choose from, is our optimal goal, to allow you to select for consistency and quality.

You will notice an increase in long yearling bulls this year, a program we are growing to meet our customer demands and spread out our calving periods due to workload. These bulls will have extra size and maturity, and you will be able to increase your cows/bull ratio. The yearling bulls are growing very well, many new and exciting sires used in this program such as the \$280,000 Mader Walk The Line, and the \$160,000 Rplus Mandate. All of these bulls will be semen tested before the sale, and we guarantee them to be breeders. You will notice our Warranty program, this was designed to fit the needs of you, our customer, and eliminate the middleman being an insurance company that seldomly pays out anyways. The 6% for 6 months policy is simple, it covers our customers from sale time through their first breeding season in case of injury/sickness/or death. We keep a pen of replacement bulls to make sure your cows get bred, and we will deal with you one on one to make it a win/win situation. We know what it means to stand behind our product, and if you have any problem with a bull from us, we want to be the first to know about it!

We want to say "thank you" to all of our customers over the past year(s), many of you who are repeat buyers, and some of you who we have just gotten to know! We can't express our gratitude enough for your confidence in our program and our product, and we sincerely appreciate doing business with you, but mostly getting to call you our friends! The sale is on the ranch, 10 miles west of Carstairs. There will be 95 bulls on offer, purebreds, percentage, age advantage, reds and blacks, and baldies. There will be a good mixture of calving ease bulls for heifers, and performance bulls for cows. Viewing of the bulls is also available anytime prior to sale, and videos will be up on the website roughly 10 days before sale. We would love to have a chance to meet you in person, but if you cannot make it to the sale, feel free to give us a call to discuss sight unseen purchases, or contact our sales management, Bohrsen Marketing.

See you February 16th!

Ryley and the whole Mader crew

## THE PEOPLE OF MADER RANCHES



### **RYLEY & JILL**

#### **STELLA & HAWKIN MADER**

madderranches@gmail.com

Ryley's Cell: 403.807.8140

Jill's Cell: 403.990.9187

Ryley has been a part of the family operation from a young child and was joined by Jill in 2007. All 4 are hands on in the business activities and will look forward to many years in the cattle industry.



### **RANDY & RONDA MADER**

rrmader13@gmail.com

Randy's Cell: 403.660.1123

Randy & Ronda started Mader Ranches in 1975. They have worked hard in the cattle industry and see all aspects of the operation from day-to-day, management & mentorship.



### **CONNER JOHNSTONE**

Conner joined the team last year. He manages the feed wagon, mechanics, cattle health and assists with many other cattle tasks that make him a huge asset to our operation.

# WWW.MADERRANCHES.COM

## SCHEDULE ON OFFER

February 15th @ 4 PM :: Refreshments & Pizza  
 February 16th @ 12 Noon :: Beef Lunch  
 1 PM :: SALE TIME  
 Followed by Entertainment & Hospitality

72 Red & Black Simmental & SimAngus Yearlings  
 24 Red & Black Simmental & SimAngus Age Advantage

## SALE STAFF

Auctioneer :: Ryan Dorran :: 403.507.6483  
 Ringmen :: Mark Stock :: 403.357.8104  
 Rod Mcleod :: 403.540.7986  
 Taylor Richards :: 306.821.4169

## SALE MANAGER

Bohrson Marketing Services Ltd.  
 Scott Bohrson :: 403.370.3010  
 Taylor Richards :: 306.821.4169  
 Nate Marin :: 306.869.7130  
 Cody Haney :: 403.845.8806  
 Riley Bohrson :: 639.213.7777  
 www.bohrson.com

## ACCOMODATIONS

Ramada - Olds :: 403.507.8349  
 Pomeroy Inn & Suites - Olds :: 403.556.8815  
 Didsbury Country Inn - Didsbury :: 403.335.8088  
 Golden West Motor Inn - Carstairs :: 403.337.3333

## BUYER INCENTIVE

- \$150 taken off bull purchase price if you take them home sale day or within a week of sale day.

## PHOTOS & VIDEOS

- Taken in house by Mader Ranches
- Can be viewed online at [www.maderranches.com](http://www.maderranches.com)
- Bulls pictures are taken Dec /23
- Bulls Videos are taken Jan/24

## INSPECTION

Cattle may be viewed prior to the sale by arrangement made with Mader Ranches. Come to the bull farm and view bulls as well as their dams prior to February 14th. On February 14th the bulls will be penned at the sale barn and can be viewed there at that time.

## TERMS & CONDITIONS

PAGE 63

## SUPPLEMENTARY INFO

A supplementary sheet will be available on sale day. This will include weights, scrotals and any updated information.

## DELIVERY

We offer free delivery to central points in Western Canada. If you are located past a convenient location in Canada, we will split delivery costs 50/50. For US purchases we will split the delivery costs and buyer is responsible for vet & border costs. We will start delivering on March 15th at our convenience, otherwise pick-up will be available at our Ranch. Free feed until delivery. Delivery is between March 15 - April 15th.

## DISCLAIMER

While every effort has been taken to ensure that all details are correct, the descriptions contained in this catalogue are often opinion only. We cannot be responsible for the consequences of any actions taken or not taken as a result of these opinions.

## HOW TO FIND US?

### Directions From Carstairs:

Go North on Main Street (10th Ave) out of town, Road automatically turns west(Twp Rd 303).  
 Go West 15 kms to Range Road 32.  
 Turn South. Ranch is on your right.

### Directions From Hwy 22:

Go East 11 kms on Twp Rd 303 (Carstairs Blind Line) to Range Road 32.  
 Turn South. Ranch is on your right.

**FIND US ON GOOGLE MAPS** - Mader Ranches



**Offering \$2,500 in SALE CREDITS**

Register to bid sale day and be entered to win 1 of 5 - \$500 credits

There is nothing better than being at the sale in person. You get the opportunity to see the cattle, catch up with friends and meet new people! We hope you can join us, but if you can't make it we want to make it convenient for you to participate from where ever you may be!

## 1. GIVE US A CALL

We are all here to help you. We can talk with you about the cattle that interest you, logistics, and if you like we can even offer an opinion. We have our contact numbers listed on Page 2.

## 2. PHONE BIDDING

An option that works at all times. You can call any of us or a Bohrson Marketing Agent of your choice. We trust and value this team and encourage you to do the same.



Scott Bohrson :: 403.370.3010  
Taylor Richards :: 306.821.4169  
Nate Marin :: 306.869.7130  
Cody Haney :: 403.845.8806  
Riley Bohrson :: 639.213.7777

[www.bohrson.com](http://www.bohrson.com)

## 3. BID AND VIEW ONLINE

You can participate from almost anywhere with an internet connection. Please feel confident in using DLMS for your online viewing and bidding. If you have any questions, please contact our representative at DLMS, Mark Shologan 780.699.5082

## Can't make it to the sale? **Watch & Bid Online.**

**With DLMS you can Watch, Listen & Bid on your computer just like you were there with online bidding over the internet**

### Instructions for Viewing And Bidding At the Sale

Visit [www.dlms.ca](http://www.dlms.ca), Fill out the registration form located under registration and sign-up for your free user account to select a username and password.

**BIDDERS** - To be approved as a bidder, Log in and click BUYER APPROVAL tab, select the sale you are interested in bidding at and click sign up.

**For more information or for help getting approved Call:**  
**Mark Shologan - 780-699-5082 or DLMS Purebred Team 780.991-3025**

Direct Livestock Marketing Systems  
*We're Making the Connection*

**D | L | M | S**  
[www.dlms.ca](http://www.dlms.ca)

*To find an agent or sale near you today  
visit [www.dlms.ca](http://www.dlms.ca)*

**Purebred Sales • Daily Presort Sales**  
**Direct Off-farm Sales every Thursdays at 10:00 am**

## Breed Average EPD's

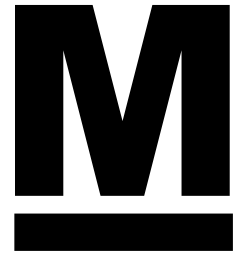
### Simmental

EPDs								
CE	BW	WW	YW	MCE	Milk	MWW	AP	TI
7.8	3.5	77.3	112.5	26.0	4.2	64.6	111.07	71.35

Carcass			
CWT	REA	Fat	Marb
EPD 25.1	0.87	-0.10	-0.05



# BULL WARRANTY PROGRAM



We are pleased to offer a warranty program that is designed to help get your bull through the most critical first breeding season. Mader Ranches guarantees to sell you a bull that is structurally sound, a bull that has passed a breeding evaluation by a licensed veterinarian.

Should any Mader bull fail to be satisfactory breeder, unable to physically service a cow or heifer, he will be replaced with a bull of equal value. Should this not be possible, an adjustment will be made to reflect the value of the bull in question or a credit will be given towards the purchase of another bull.

Our warranty program offers a warranty in a language you can understand. While under our warranty your bull is covered for injury, sickness or death. We will service you needs with another bull or a credit to next years sale. Should you have any problem with a bull, contact Mader Ranches directly at 403.807.8140. We require your veterinarian to complete a report and email it to Mader Ranches. We will work with you to make sure your cows get serviced and your are satisfied with your purchase. We have back up bulls set aside for customers.

We offer the following which is the buyers responsibility to purchase at time of settlement:

**Duration - 6 months      Rate - 6%**

Coverage – During Breeding Season:

This warranty covers injury, sickness or death. It does not include freezing semen.

In case of loss, Mader Ranches will not be responsible for anything up and above the purchase of the bull.

The program will cover 100% of the purchase price less salvage value when possible.

Employ a licensed veterinarian to treat, diagnose and/or fill out a vet form. If the animal dies, a post mortem will be required.

**Notify Ryley Mader immediately by phone 403.807.8140**

Mader Ranches is responsible to make settlement of an approved warranty claim with a suitable replacement.

Exclusions to Warranty:

Injury or death due to malicious, willful or intentional acts or mistreatment by you or your employees are fraudulent claims.

One thing that must be kept in mind, however, is that semen tests most accurately represent the status of sperm production on the day of the exam. If there is an injury, illness or any sort of significant stress that occurs subsequent to the exam the effect on the sperm picture could be enough to affect breeding performance. A new environment, a drastic change in feed quality, being placed in a pen with older bulls are just a few examples of stressors. Any failed breeding soundness evaluation within 6 months of the initial presale evaluation should be assessed in conjunction with the original, pre-sale examination including an independent assessment of both semen smears. In most cases, if the bull received a satisfactory classification on the first evaluation, and that classification was correct, then a subsequent questionable (decision deferred) or unsatisfactory classification is not the fault of the breeder.

**CREDIT ONLY NO CASH REFUNDS.**

Bulls that are not covered by this warranty option at the time of settlement will not be covered by Mader Ranches other than the breed guarantee standards set by the Canadian Simmental Association.

We highly recommend that bulls that remain at the farm until a later date are covered with our warranty program.

Bear in mind, we stress the importance of Mader Ranches Breeding Season Warranty.

**IF YOU CHOSE TO LEAVE YOUR BULL AT MADER RANCHES AFTER THE SALE, YOU MUST PURCHASE WARRANTY FROM MADER RANCHES OR A 3RD PARTY.**

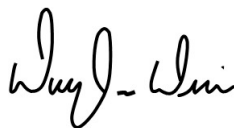


# HERD HEALTH

Mader Ranches have their entire cow herd on an integrated and comprehensive health and production management program. This program is based on the detailed collection of data on each individual animal at all key health and production points. This information is kept in a secure web-enabled database called Herdtrax™ and is continually monitored and audited by the managing veterinarians at Cow/Calf Health and Management Services (CCHMS).

CCHMS is proud to work with Mader Ranches and if required will provide documentation and verification of all animal health processes and treatments. If there are any questions with respect to the health and production management program at Mader Ranches, please contact myself.

Sincerely,



Waylon Wise



Office: (403)946-4567  
Cell: (403)369-9823  
Fax: (403)946-5529  
drwwise@gmail.com

**HERDTRAX™**  
Cattle Record Management



Waylon ultrasounding cows on summer pasture at Mader Ranches

# BULL PREPARATION

When you focus on building a herd of exceptional females, the resulting bulls not only look the part but they breed it.

Some bulls look fantastic on the day, but it's not good enough to buy a bull on his looks alone. You are buying his potential. Yes, you should trust your eye first, but don't stop there. Study his pedigree, his EPD's, and any related animals. Make sure you look at his performance data, genetic testing and calving ease rating. We provide everything so that you can make an informed choice.

We also do this same homework on the bulls that we select. Talk to any of us! We not only have countless hours of hands on experience with these animals, but we have spent the time travelling, doing homework and visiting with other cattlemen and women. Our customers know that we have put in the effort to ensure the Mader Ranches bulls will go out and breed calves that make them profitable. Our homework is directly linked to your success.

We as a family are committed to the success of our customers. This means we raise and prepare our animals in a manner that promotes fitness and longevity of your new purchase.

The bulls developed on a TMR ration with Trouw pellet, chopped hay and straw, silage & supplements, minerals and vitamins. They are fed in large groups. They have been professionally developed for real-world commercial conditions. All data and complete performance info provided upon request and on sale day. Please remember that EPD's cannot be compared across breeds.

We have a Complete Herd Health & Vaccination Program with CCHMS - Waylon Wise (See above)

Prior to the sale all bulls have been semen tested, palpated, scrotal measured, and inspected by Dr. Wise.

These bulls are fully guaranteed. Should a bull fail to be a satisfactory breeder, he will be replaced with another bull of equal quality or a credit will be given.

NO REFUNDS. Mader Ranches reserves the right to be the first to know about any problems you might have with your bull.

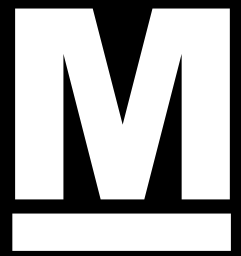
## MADER CALVING EASE RATINGS

3 ratings are used on the bulls to rate them for calving ease, the more stars, the more we recommend them used on heifers





# THE MADER RANCHES DIFFERENCE



## POLLED GENETICS

Horns are extra work, welfare and safety issues for cattle and cattlemen. Mader Ranches prides itself on its Polled genetics since 1975



## FAMILY OPERATION WITH LONG TIME COMMITMENT

The Mader Family has been in the cattle business for 47 years. This is the 34th Annual Bull Sale and plan on a extensive future with our 2nd and 3rd generation. We work hard to ensure our customers are happy with their investment. We are committed to helping our customers achieve their goals and we back our animals.



## HEART OF OUR HERD

We have a large nucleus of foundation females and pride ourselves in the cow families that extend down from that base. These bulls on offer are the top 95 bulls that we have to offer from 300 calving cows. They are the best of the best.



## DEPTH OF PEDIGREE

We utilize Embryo Transfer and AI extensively to multiply the consistency in our herd. We find that by reproducing multiple daughters and sons from our donor cows and breed leading sires, we can offer consistency to our customers.



## WEIGHTS

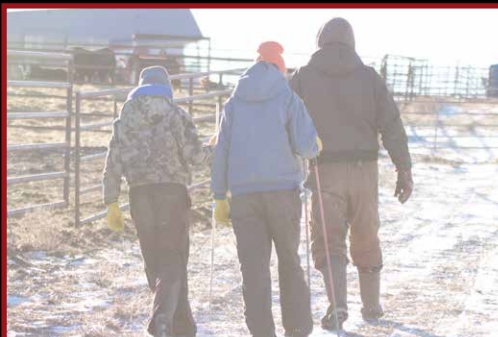
These bulls are being fed in order to reach their genetic potential. We really try to encourage fitness and longevity in our bulls. We are feeding our bulls for proper development of their body, feet and legs and reproductive organs.



## ACCURATE DATA

We have invested into cattle record keeping and management so that all of our data is as accurate as possible. We have our herd on the HerdTrax program as it integrates well with the Total Herd Enrollment with the Canadian Simmental Association. All data is available.

# PICTURE TAKING CREW





# SISTERS TO THE SALE BULLS

## 2023 FALL SALE HIGHLIGHTS FOR MADER RANCHES



SIRE: MADER MILESTONE 69H  
Sold to KCH Cattle Co  
at Ladies Night for \$15,000



SIRE: MADER WALK THE LINE  
Sold to Cobb Farms  
at Friday Night Lights for \$13,000



SIRE: SVS BETTS 808F  
Sold to Double RN Ranching  
at Ladies Night for \$15,000



SIRE: SVS BETTS 808F  
Sold to Sara-Jane Ruzicka  
at Ladies Night for \$14,000



SIRE: MADER WALK THE LINE  
Sold to TC Tara Simmentals  
at Friday Night Lights for \$18,000



SIRE: MRL PLAYMAKER 36G  
Sold to Horner Cattle Co  
at Ladies Night for \$25,000



SIRE: LFE HALL PASS 851G  
Sold to Ashworth Land & Cattle  
at Ladies Night for \$14,250



SIRE: MADER WALK THE LINE  
Sold to Downhill Simmentals  
at Friday Night Lights for \$24,000



SIRE: LFE HALL PASS 851G  
Sold to Perkin Land & Cattle  
at Ladies Night for \$14,000



SIRE: LFE HALL PASS 851G  
Sold to Downhill Simmentals  
at Ladies Night for \$15,000



SIRE: MADER WALK THE LINE  
Sold to Havencrest Farms  
at Friday Night Lights for \$13,500



SIRE: SVS DYNASTY 915G  
Sold to Tandem T Livestock  
at Ladies Night for \$10,500



# REFERENCES SIRES

## MADER WALK THE LINE 92J

17 January 2021 • MDR 92J • PTG1358996

EPDs									
BW	205 Wt.	365 Wt.	CE	BW	WW	YW	Milk	MCE	MWW
87	1042	1530	11.2	1.9	116.7	171.5	26.7	8.4	85.1

Top 1% for WW, YW, MWW, TI & CW  
Homo Polled

NCB COBRA 47Y  
MADER WALK THIS WAY 224B  
MADER P IRON SUGAR 7X

MR HOC BROKER  
IRCC DARLIN' 613D  
DESTINY ODIN SHEA



## MADER WALK THIS WAY 224B

27 July 2014 • MDR 224B • BPTG1139930

EPDs									
BW	205 Wt.	365 Wt.	CE	BW	WW	YW	Milk	MCE	MWW
84			11.8	0.4	96.0	151.5	29.5	9.6	77.5

Top 1% for YWT, TI & MCE  
Top 10% for BW, WW, MCE & API  
Homo Polled, Hetero Black

LFE VIPER 455U  
NCB COBRA 47Y  
NCB MISS DREAM 22T  
MADER P BLACK IRONMAN 22U  
MADER P IRON SUGAR 7X  
LFE FAMOUS 632T



## RPLUS MANDATE 1044J

26 January 2021 • LRPS 1044J • BPG1344163

EPDs									
BW	205 Wt.	365 Wt.	CE	BW	WW	YW	Milk	MCE	MWW
88	771	1579	9.1	2.0	78.0	129.8	20.3	3.3	59.3

Top 15 % for YWT, CW, REA  
Homo Polled, Hetero Black

R PLUS 5015C  
R PLUS YUMA 9087G  
MISS R PLUS 3007A  
R PLUS BLACKEDGE  
MISS R PLUS 4193B  
LFE BS DAKOTA COAL 610P



## KWA INTERSTATE 203J

5 February 2021 • KWA 203J • BPG1378285

EPDs									
BW	205 Wt.	365 Wt.	CE	BW	WW	YW	Milk	MCE	MWW
105	783	1578	11.1	2.7	86.5	144.7	26.3	5.4	69.6

Top 3% for YWT, CW & REA  
Homo Polled, Homo Black

GLS INTEGRATE Z3  
HART INTERSTATE 102E  
HART MISS 138B  
SKORS HIGH ROLLER 34C  
CROWE BUTTON 20E  
LRX BUTTON 25C



## MADER DISPATCH 25J

4 January 2021 • MDR 25J • PG1357907

EPDs									
BW	205 Wt.	365 Wt.	CE	BW	WW	YW	Milk	MCE	MWW
98	891	1457	6.9	5.6	103.0	141.6	20.2	5.4	71.7

Top 1% for WW, Top 15% for YW, CW & REA  
Homo Polled

BGS/BM CAPTAIN SCREAM 63D  
SVS BETTS 808F  
WFL RED SAGE 506C  
TNT GUNNER N208  
MADER P MODERATION 32W  
TH RED LASS 11N



## MADER SON OF ANARCHY 144H

6 February 2020 • MDR 144H • BPTG1318606

EPDs									
BW	205 Wt.	365 Wt.	CE	BW	WW	YW	Milk	MCE	MWW
86	994	1440	11.4	1.3	81.8	120.3	18.5	4.6	59.4

Top 20% for CE & BW  
Homo Polled, Homo Black

LFE GOTHAM 819Y  
LFE THE RIDDLER 323B  
LFE BS CHARO 23Y  
NCB COBRA 47Y  
LFE BS VIOLET 641A  
LFE BS VIOLET 128Z







# MADER **RING OF FIRE** 148L



FULL SISTER TO LOT 1



FULL SISTER TO LOT 1



DAM OF LOT 1 - CITYVIEW MISS JEWEL 66J



SIRE OF LOT 1 & 2 - MADER

-A real standout WTL son from a young age expressing lots of natural fleshing ability, muscle definition, and structural correctness  
 -Apart of the show team last fall, this bull was declared a two time Reserve Intermediate champion bull calf at both Farmfair and Agribition  
 -His two full sisters were also very competitive on our show string and demanded \$18,000 and \$13,000 at Friday Night Lights  
 -The dam to this bull was purchased through FNL for \$25K, and quickly became a donor female, with an elite phenotype, and powerful genotype  
 -This bull will be one of the top Walk The Line sons to sell this spring, come check him out  
 -He ranks in the top 1% for both WW and YW and has an Adj WW of 1076lbs



LOT 1



LOT 1

31 January 2023 • MDR 148L • PTG1437628

EPD	EPDs										Carcass EPDs		
	CE	BW	WW	YW	Milk	MCE	MWW	API	TI	CWT	REA	Fat	Marb
Breed Rank	9.5	3.7	110.6	164.5	22.5	6.8	77.8	111.34	87.57	43.0	0.86	-0.09	-0.20
Rank	35	55	1	1	70	20	3	50	1	4	55	65	95

BW	205 Wt.	365 Wt.	ADG	WPDA
84	1076	1540	2.90	4.05

CE  
☆☆

**Homo Polled, Red**

MADER WALK THIS WAY 224B

SIRE: MADER WALK THE LINE 92J  
IRCC DARLIN' 613D

SVS BETTS 808F

DAM: CITYVIEW MISS JEWEL 66J  
SUNNY VALLEY PAYTON 77E

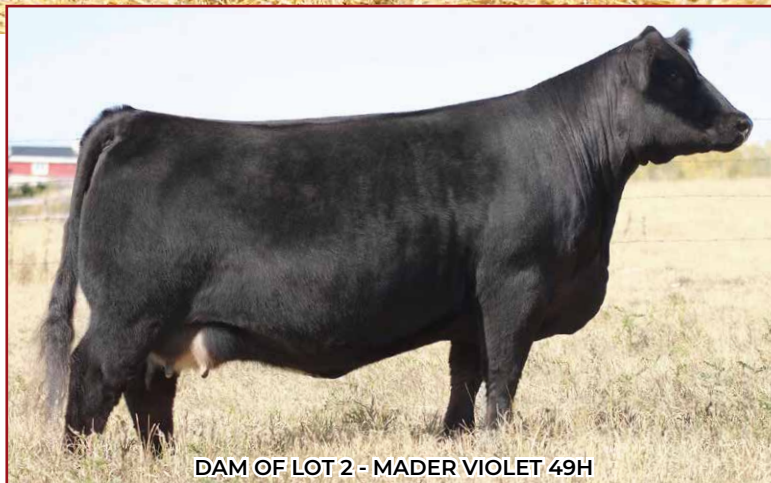




# MADER FOLSOM PRISON 66L



MADER WALK THE LINE



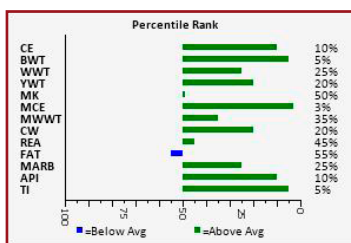
DAM OF LOT 2 - MADER VIOLET 49H



LOT 2



LOT 2 & FULL SISTER



-One very unique pedigreed and well put together individual  
 -Another standout since birth, this guy started small with an early gestation, and grew like shot until weaning  
 -His dam is none other than the Mader Violet 49H donor, demanding \$92,000 for half interest in the fall of 2021 to KCH Cattle, and he sired by the record selling Mader Walk the Line sire for \$280,000 to KT Ranches  
 -We feel genetically, he is one of the most intriguing herdsires we have offered the industry  
 -In last years sale, his maternal brother sold for \$18,000 to Cory and Brad Campbell  
 -The structural correctness to this bull is second to none, with his flexible joints and pasterns, his extended front third, and his well balanced design and skeleton  
 -We plan utilize this bull on cows and heifers, as with the calving ease Walk This Way, the short gestation Violet cow family, and the calving ease Broker and Odin on the bottom side, he should calve with ease while still offering growth and some punch

\*POSSIBILITY OF SEMEN PACKAGES ON LOT 2. PLEASE INQUIRE IF INTERESTED\*

8 January 2023 • MDR 66L • BPTG1436842

Homo Polled, Hetero Black

EPD	EPDs										Carcass EPDs		
	CE	BW	WW	YW	Milk	MCE	MWW	API	TI	CWT	REA	Fat	Marb
Breed Rank	13.4	-0.1	83.6	127.2	25.6	9.3	67.4	130.14	82.34	34.2	0.90	-0.10	0.01
	10	4	25	20	50	3	35	10	5	20	45	55	25
		BW	205	365	ADG	WPDA							
		80	927	1418	3.07	3.82							

CE  
☆☆☆

MADER WALK THIS WAY 224B

SIRE: MADER WALK THE LINE 92J

IRCC DARLIN' 613D

TJSC BOONE PICKENS 46C

DAM: MADER VIOLET 49H

LFE BS VIOLET 641A



3

MADER WALK THIS WAY 224B

SIRE: MADER WALK THE LINE 92J  
IRCC DARLIN' 613D

TJSC BOONE PICKENS 46C

DAM: MADER VIOLET 49H

LFE BS VIOLET 641A



DAM OF LOT 2 &amp; 3



FULL SISTER OF LOT 2 &amp; 3

MADER **NEW ORLEANS** 102L

16 January 2023 • MDR 102L • BPTG1437613

Homo Polled, Hetero Black

	EPDs										Carcass EPDs		
	CE	BW	WW	YW	Milk	MCE	MWW	API	TI	CWT	REA	Fat	Marb
EPD	12.3	0.8	88.5	136.6	25.6	8.6	69.9	128.60	83.81	35.2	0.97	-0.10	-0.01
Breed Rank	15	10	15	10	50	5	25	10	4	0	25	60	35

	BW	205 Wt.	365 Wt.	ADG	WPDA
	90	904	1485	3.63	3.99

CE



-A full brother to lot 2, and a bull with a bit more frame, length, and overall power  
 -As stated in his brothers footnote, the dam to these bulls is as good as we can make them when we talk about udder quality, foot structure, volume and capacity  
 -Violet 49H is, and will continue to be very influential in our black program for years to come  
 -Their full sister was selected as our \$48,000 pick of the 2023 heifer calves from KT Ranches  
 -Look at this bull to add lots of maternal and growth to his offspring

4

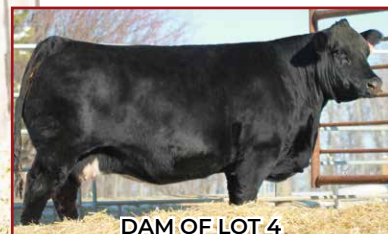
MADER WALK THIS WAY 224B

SIRE: MADER WALK THE LINE 92J  
IRCC DARLIN' 613D

CG BLACK NUGGET 25N

DAM: CG BLACK OPAL 652S

CG BLACK OPAL 214 M



DAM OF LOT 4



MATERNAL BROTHER OF LOT 4

MADER **MAN IN BLACK** 152L

1 February 2023 • MDR 152L • BPTG1437657

Homo Polled, Hetero Black

	EPDs										Carcass EPDs		
	CE	BW	WW	YW	Milk	MCE	MWW	API	TI	CWT	REA	Fat	Marb
EPD	8.2	3.4	101.6	144.6	25.8	5.3	76.6	125.70	87.47	45.3	1.01	-0.11	0.00
Breed Rank	45	45	1	3	45	35	5	15	1	2	20	30	30

	BW	205 Wt.	365 Wt.	ADG	WPDA
	96	932	1481	3.43	4.06

CE



-A performance cow bull oriented to add extra pounds to his offspring through length and frame power  
 -Sired by the legendary Walk The Line, and out of the multi time proven Opal 652S donor  
 -These will be the last direct sons out of the old Opal donor as she is now deceased, but her legacy will live on with over 45 daughters and granddaughters in the herd  
 -This guy will be an udder and foot improver, and really boost your weaning weights



5

NCB COBRA 47Y

SIRE: MADER WALK THIS WAY 224B  
MADER P IRON SUGAR 7X

IPU BLACK CINCH 95G

DAM: MADER OPAL 81J  
MADER OPAL 32C

# MADER REVIVAL 43L

4 January 2023 • MDR 43L • BPG1437519

**Homo Polled, Hetero Black**

	EPDs										Carcass EPDs			
	CE	BW	WW	YW	Milk	MCE	MWW	API	TI	CWT	REA	Fat	Marb	
EPD	8.5	2.6	95.2	144.8	28.7	5.8	76.3	124.88	84.10	38.9	0.99	-0.10	-0.06	
Breed Rank	45	30	4	3	35	30	5	15	3	10	25	40	50	
		BW	205 Wt.	365 Wt.	ADG	WPDA								
		82	929	1414	3.03	3.71								

CE



- A really nice baldie bull with a low birthweight and lots of growth and jam, that could be considered for use on larger heifers
- His first calving dam had him unassisted, and milked like a dam, weaning him off with an actual weaning weight of 910lbs
- Walk this Way progeny are in high demand with limited semen left, and the Black Cinch daughters are becoming some of our elite young females in the herd
- Note on the bottom side of his pedigree is the great "Opal" cow family, a cow family responsible of creating tremendous udder and foot quality
- This bull is masculine in his type, broad topped, heavy muscled, and sound footed

6

NCB COBRA 47Y

SIRE: MADER WALK THIS WAY 224B  
MADER P IRON SUGAR 7X

WS PROCLAMATION E202

DAM: MADER VIOLET 71J  
LFE BS VIOLET 641A

# MADER FIRE BURNING 20L

2 January 2023 • MDR 20L • BPG1437510

**Homo Polled, Hetero Black**

	EPDs										Carcass EPDs			
	CE	BW	WW	YW	Milk	MCE	MWW	API	TI	CWT	REA	Fat	Marb	
EPD	12.7	-0.6	90.3	139.2	26.0	9.2	71.2	143.37	89.99	34.1	0.78	-0.08	0.14	
Breed Rank	10	3	10	10	45	3	20	1	1	20	75	80	5	
		BW	205 Wt.	365 Wt.	ADG	WPDA								
		71	842	1391	3.43	3.62								

CE



- Starting at just 71lbs at birth and weaning off his first calving dam at 825lbs
- This bull will calve easy as both Walk This Way and Proclamation have been used very successfully in the heifer pen
- He is stout made, carries lots of lower quarter, is very athletic on the move, and has great presence to him
- Note the Violet cow family on the bottom side, a female responsible for many high sellers in our program on both the bull and female side of things
- This bull should be a short gestation sire as Ironsugar and Violet repetitively offer this trait





# MADER DELUXE 155L

2 February 2023 • MDR 155L • PGT1437626

Homo Polled, Red

BW	205 Wt.	365 Wt.	ADG	WPDA
86	894	1438	3.40	3.95

CE



- 5 full brothers to the record selling Walk The Line for \$280,000
- Certainly some variety in terms of size and weight in these bulls as all embryo brothers raised on a range of recip dams, however very consistent type and kind and quality
- Their structural correctness, foot quality, temperament, and style is second to none, and we feel some very high quality individuals
- Darlin' 613D continues to pave the path in the breed and industry with her sons as top AI sires, and her daughters as top donors in multiple herds
- The progeny and embryos that have sold off this donor over the past few years would easily excel into the 7 digit figures, and these sons will be very sought after
- The smoothness of shoulder and head structure indicate that many of these sons will calve easy and work on heifers
- Two red brothers and three black... we will let you rank them as the quality runs deep



# MADER JOYRIDE 145L

# MADER PAI

29 January 2023 • MDR 145L • BPTG1437570

11 January 2023 •

BW	205 Wt.	365 Wt.	ADG	WPDA
94	838	1409	3.57	3.88

CE



EPD	EPDs										Carcass EPDs		
	CE	BW	WW	YW	Milk	MCE	MWW	API	TI	CWT	REA	Fat	Marb
Breed Rank	10.5	0.7	86.2	129.8	26.9	7.7	70.0	121.61	81.68	22.0	0.80	-0.10	-0.03
	25	10	20	15	40	10	25	20	10	65	75	55	40

BW	205 Wt.	365 Wt.	ADG	WPDA
80	839	1351	3.20	

Homo Polled, Hetero Black

Homo Polled





WALK THE LINE - SIRE OF LOT 7-11



8

MADER **TREMBLE** 105L

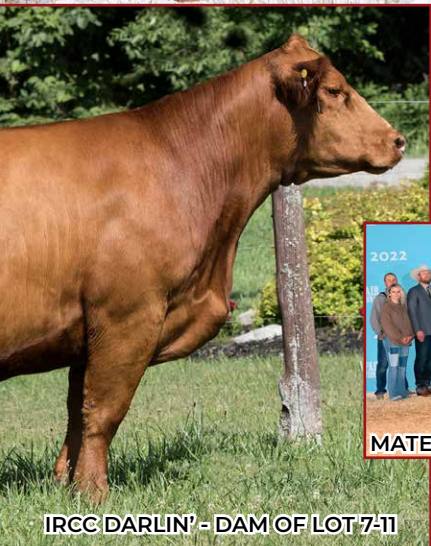
BW	205 Wt.	365 Wt.	ADG	WPDA
82	832	1328	3.10	3.65

CE



16 January 2023 • MDR 72L • PTG1437614

Homo Polled, Red



IRCC DARLIN' - DAM OF LOT 7-11



MATERNAL BROTHER OF LOT 7-11



MATERNAL SISTER OF LOT 7-11



FULL SISTER OF LOT 7-11



10

IRON **KILLER** 86L

MDR 86L • BPTG1437599

CE



WPDA  
3.71

ed, Hetero Black



11

MADER **WARRIOR** 139L

27 January 2023 • MDR 139L • BPTG1437623

CE



BW	205 Wt.	365 Wt.	ADG	WPDA
86	847	1380	3.33	3.80

Homo Polled, Hetero Black

NCB COBRA 47Y

SIRE: MADER WALK THIS WAY 224B

MADER P IRON SUGAR 7X

MR HOC BROKER

DAM: IRCC DARLIN' 613D

DESTINY ODIN SHEA



12

NCB COBRA 47Y

SIRE: MADER WALK THIS WAY 224B  
MADER P IRON SUGAR 7X

IPU BLACK CINCH 95G

DAM: MADER BLACKSTAR 72J  
MADER P BLACKSTAR 74W

SIRE OF LOT 12 &amp; 13



PATERNAL BROTHER OF LOT 12

MADER **DENVER** 107L

Polled, Hetero Black

16 January 2023 • MDR 107L • BPG1437547

	EPDs										Carcass EPDs		
	CE	BW	WW	YW	Milk	MCE	MWW	API	TI	CWT	REA	Fat	Marb
EPD	7.6	2.7	86.5	128.4	30.5	6.9	73.8	120.41	78.26	32.5	0.88	-0.10	-0.06
Breed Rank	55	35	20	20	25	15	15	25	15	25	50	45	50

BW	205 Wt.	365 Wt.	ADG	WPDA
81	875	1387	3.20	3.62

CE



- A 3/4 brother to the lot 6 bull with Walk This Way on the top side and a first calving Black Cinch daughter
- He incorporates maternal and calving ease from the Ironsugar cow on the top side, yet still offers adequate performance with Liner 56U on the bottom
- He is stout in his chest floor, has lots to offer over his top, moves freely, and is very balanced and eye appealing
- Note the docility is excellent in this young herdsire

13

NCB COBRA 47Y

SIRE: MADER WALK THIS WAY 224B  
MADER P IRON SUGAR 7X

SVS DYNASTY 915G

DAM: MADER RIVIERIA 135J  
MADER CAT HOUSE 35D

MATERNAL GRANDSIRE



PATERNAL BROTHER OF LOT 13

MADER **OPPENHEIMER** 101L

Homo Polled, Hetero Black

16 January 2023 • MDR 101L • BPG1437544

	EPDs										Carcass EPDs		
	CE	BW	WW	YW	Milk	MCE	MWW	API	TI	CWT	REA	Fat	Marb
EPD	9.2	2.3	91.4	140.5	24.7	8.2	70.3			34.7	0.96	-0.10	-0.07
Breed Rank	35	30	10	5	55	10	25			20	30	55	55

BW	205 Wt.	365 Wt.	ADG	WPDA
79	825	1284	2.87	3.34

CE



- Just a 79lb birth weight on this guy boasting an 825 Adj WW out of a first calving dam
- Like all the Walk This Way progeny, he is nice skulled, attractive made, has loads of hair, and is very fluid in his movement
- His grandam, Cat House 35D, would be one of my favorite black cows on the farm, and you will note her son as lot 32
- Buy this bull with confidence to utilize on heifers or to eliminate high birth weights



14

CDI VEGAS 26X

SIRE: KWA SLIDER 196H

CROWE GOLDIE 3F

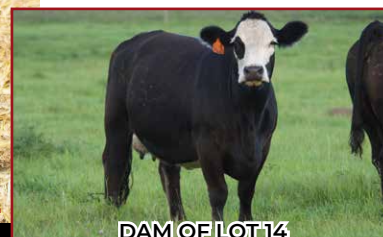
WLE UNO MAS X549

DAM: CROWE CYPRESS 82J

ULTRA MISS CYPRESS 28G



LOT 14



DAM OF LOT 14

# MADER SLITHER 150L

31 January 2023 • MDR 150L • BPG1437573

Homo Polled, Hetero Black

	EPDs										Carcass EPDs			
	CE	BW	WW	YW	Milk	MCE	MWW	API	TI	CWT	REA	Fat	Marb	
EPD	13.9	-0.2	73.7	107.3	23.9	6.1	60.8	135.15	80.25	13.6	0.77	-0.07	0.19	
Breed Rank	5	4	65	65	60	25	70	3	10	95	80	95	3	

	BW	205 Wt.	365 Wt.	ADG	WPDA
	82	775	1282	3.17	3.34

CE



- A calving ease specialist with the design and pedigree to "Slither" a calf out
- Both Slider and Uno Mas in his lineage have been used time and time again on heifers with superior success
- He started with just an 82lb BW, and ranks in the top 5% for CE and BW
- This bull is full meat and muscle, travels with ease, and is backed by a real tidy uddered, black baldie, first calving dam

15

LFE THE RIDDLER 323B

SIRE: MADER THE NATIONAL 43E

LFE BS VIOLET 641A

LFE HEAVY HITTER 352C

DAM: MADER A LIST 63G

MADER A LIST 214B



SIRE OF LOT 15



DAM OF LOT 15

# MADER BREWHOUSE 168L

14 February 2023 • MDR 168L • BPG1437585

Homo Polled, Hetero Black

	EPDs									Carcass EPDs			
	CE	BW	WW	YW	Milk	MCE	MWW	API	TI	CWT	REA	Fat	Marb
EPD	8.5	4.3	87.2	137.1	15.0	6.4	58.6	115.46	76.77	38.2	1.02	-0.07	-0.02
Breed Rank	45	65	15	10	100	20	80	35	20	10	15	95	35
		BW	205 Wt.	365 Wt.	ADG	WPDA					CE		
		94	790	1355	3.53	3.72							

CE



- This National/Heavy Hitter cross has been very successful time and time again
- We lost The National sire, so this will be the last son to sell, but for a mid February born bull you really have to admire his growth and power
- Like all Nationals, he is extended in his front third, carries lots of middle third, and is very round and expressive in his muscle shape
- His dam stems from an excellent cow line that are well known as the huge barrelled, big capacity cows in the herd
- Maternal sister just sold through Mader Ladies Night sale to W Sunrise



# 16

R PLUS YUMA 9087G

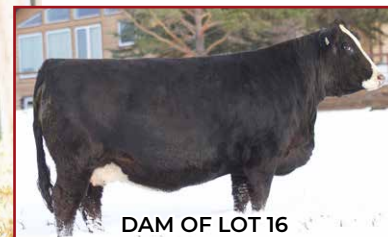
**SIRE:** R PLUS MANDATE 1044J

MISS R PLUS 4193B

NCB COBRA 47Y

**DAM:** FGAF BLACK LINNE 013F

RENDEZVOUS LINNE 209D



DAM OF LOT 16



MATERNAL SISTER OF LOT 16

## MADER QUIVER 2L

**Homo Polled, Hetero Black**

1 January 2023 • MDR 2L • BPG1437504

	EPDs										Carcass EPDs		
	CE	BW	WW	YW	Milk	MCE	MWW	API	TI	CWT	REA	Fat	Marb
EPD	8.6	2.6	88.7	134.6	24.3	3.8	68.7	120.15	78.09	34.4	1.05	-0.10	-0.13
Breed Rank	45	30	15	10	55	60	30	25	15	20	15	50	80

	BW	205 Wt.	365 Wt.	ADG	WPDA
	89	901	1402	3.13	3.87

CE



-A personal favorite son out of the \$160,000 Rplus Mandate sire and out of one of our elite Cobra cows in the herd

-This guy is, and has always been that big soggy bull, with added softness, masculinity, muscle, and growth

-His black baldie dam has a near perfect udder attachment, is bold ribbed, and travels on a big foot

-His maternal sister was a highlight for us last fall, and you can expect this bull to add extra maternal strength

-A must see to appreciate the extra performance and power with an actual weaning weight of 965lbs

# 17

R PLUS YUMA 9087G

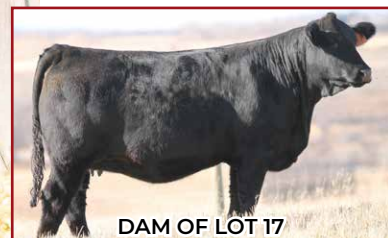
**SIRE:** R PLUS MANDATE 1044J

MISS R PLUS 4193B

MADER SECRET SERVICE 78B

**DAM:** MADER OPAL 144D

MADER OPAL 124Z



DAM OF LOT 17



MATERNAL SISTER OF LOT 17

## MADER RESTRICTION 46L

**Homo Polled, Hetero Black**

5 January 2023 • MDR 46L • BPG1437520

	EPDs										Carcass EPDs		
	CE	BW	WW	YW	Milk	MCE	MWW	API	TI	CWT	REA	Fat	Marb
EPD	9.9	1.9	77.9	122.4	25.1	4.5	64.1	121.44	73.68	38.9	1.06	-0.10	-0.10
Breed Rank	30	20	50	30	50	50	55	20	35	10	10	50	65

	BW	205 Wt.	365 Wt.	ADG	WPDA
	80	851	1358	3.17	3.73

CE



-One of the most complete black bulls on offer with his added body capacity, depth of rib and flank, stoutness and mass, and balance

-The Opal 144D female does it everytime, raising some superior sons over the past years and last years daughter selling to Black River Farms for \$19,000

-This cow just flat out raises pounds, including weaning this guy off at an actual weight of 895lbs

-His EPDs are super balanced, look at this bull to calve nicely and really pass on the ability to grow



18

R PLUS YUMA 9087G

SIRE: R PLUS MANDATE 1044J

MISS R PLUS 4193B

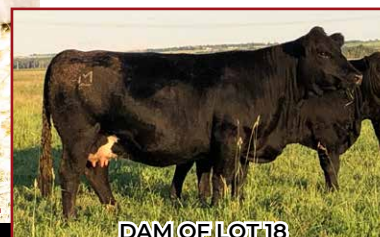
LFE THE RIDDLER 323B

DAM: MADER OPAL 19E

MADER OPAL 28C



LOT 18



DAM OF LOT 18

# MADER HUMBLE 91L

12 January 2023 • MDR 91L • BPG1437540

Homo Polled, Homo Black

EPD	EPDs										Carcass EPDs		
	CE	BW	WW	YW	Milk	MCE	MWW	API	TI	CWT	REA	Fat	Marb
Breed Rank	9.8	2.3	90.2	141.1	20.6	4.6	65.7	117.90	77.87	43.9	1.13	-0.10	-0.19
	30	30	10	5	85	45	45	30	15	3	4	45	95

	BW	205 Wt.	365 Wt.	ADG	WPDA
	86	857	1385	3.30	3.81

CE

☆☆

- A beef machine here with all the bells and whistles, and resembles his sire very much
- Opal 19E is one of our most favorite "Opal" descendants on the farm, with ideal udder, capacious body, great foot, and milking ability
- This bull is so complete in his makeup, as he is broad topped, full of middle third, round in his muscle design, mature and big footed
- Many top sons of this cow have sold through this sale, and our top replacement kept back last year was her daughter
- Weaned off with an actual WW of 875lbs, and ranks in the top 10% for WW and 5% for YW

19

R PLUS YUMA 9087G

SIRE: R PLUS MANDATE 1044J

MISS R PLUS 4193B

LFE HEAVY HITTER 352C

DAM: MADER OPAL 29F

CG BLACK OPAL 652S



MATERNAL SISTER OF LOT 19



MATERNAL BROTHER OF LOT 19

# MADER SEA CHANGE 77L

10 January 2023 • MDR 77L • BPG1437533

Homo Polled, Homo Black

EPD	EPDs										Carcass EPDs		
	CE	BW	WW	YW	Milk	MCE	MWW	API	TI	CWT	REA	Fat	Marb
Breed Rank	7.9	2.5	81.3	125.8	16.7	3.9	57.4	113.91	73.33	37.9	1.06	-0.10	-0.11
	50	30	35	25	100	55	85	40	35	10	10	40	70

	BW	205 Wt.	365 Wt.	ADG	WPDA
	86	855	1335	3.00	3.67

CE

☆☆

- An actual WW of 880lbs, and a bull that expresses lot of growth and performance
- Out of a great Opal 652S daughter who continues to impress with her production, and has great teat size and udder suspension
- Her last years son sold to EK Cattle Co
- Sired by the \$160,000 Rplus Mandate sire that should add extra sogginess and birth to weaning spread



20

R PLUS YUMA 9087G

SIRE: R PLUS MANDATE 1044J

MISS R PLUS 4193B

MADER WALK THIS WAY 224B

DAM: MADER OPAL 195H

CG BLACK OPAL 652S



MATERNAL BROTHER OF LOT 20



MATERNAL GRANDDAM

## MADER MASSACRE 39L

3 January 2023 • MDR 39L • BPG1437517

Homo Polled, Hetero Black

	EPDs										Carcass EPDs		
	CE	BW	WW	YW	Milk	MCE	MWW	API	TI	CWT	REA	Fat	Marb
EPD	8.2	2.7	80.8	126.9	22.7	4.6	63.1	118.26	73.83	35.1	1.01	-0.11	-0.11
Breed Rank	45	35	35	20	70	45	60	30	35	20	20	30	70

	BW	205 Wt.	365 Wt.	ADG	WPDA
	88	805	1392	3.67	3.71

CE



-A maternal brother to this bull was a highlight last year selling to Shawn Schick for \$10,750  
 -His dam is near perfect uddered, upholds a great structure and look to her, and is very productive in her milking ability  
 -Lots of maternal here when you combine Walk This Way with Opal 652S on the bottom side, look to keep this bulls daughters  
 -Superior docility, great haircoat, added correctness and style, along with ample thickness and dimension

21

R PLUS YUMA 9087G

SIRE: R PLUS MANDATE 1044J

MISS R PLUS 4193B

LRX THE GODFATHER 141Z

DAM: MADER OPAL 323D

CG BLACK OPAL 652S



LOT 21



MATERNAL SISTER OF LOT 21

## MADER RECALL 63L

8 January 2023 • MDR 63L • BPG1437528

Homo Polled, Hetero Black

	EPDs										Carcass EPDs		
	CE	BW	WW	YW	Milk	MCE	MWW	API	TI	CWT	REA	Fat	Marb
EPD	8.9	3.0	75.8	117.9	19.0	2.5	56.9	105.71	66.97	39.7	1.11	-0.12	-0.24
Breed Rank	40	40	60	40	90	75	90	70	80	10	5	25	100

	BW	205 Wt.	365 Wt.	ADG	WPDA
	86	771	1294	3.27	3.54

CE



-Another one of these Mandate sons crossed with the "Opal" cow family  
 -A cowboys dream to be able to assemble bull power that are 1/2 to 3/4 siblings to create uniformity and consistency  
 -All of these related bulls have birthweights in the 80's and weaning weights in the 800's  
 -A bull here with a stout top, piles of hair, good shape and muscle definition, and will create some awesome daughters



22

R PLUS YUMA 9087G

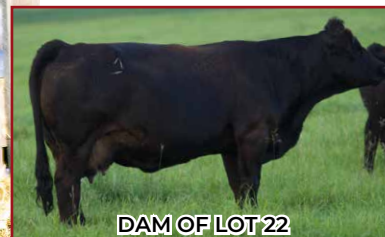
SIRE: R PLUS MANDATE 1044J

MISS R PLUS 4193B

LRX THE GODFATHER 141Z

DAM: MADER OPAL 32C

CG BLACK OPAL 652S



DAM OF LOT 22



MATERNAL BROTHER OF LOT 22

## MADER DUBLIN 81L

10 January 2023 • MDR 81L • BPG1437535

Homo Polled, Hetero Black

	EPDs										Carcass EPDs			
	CE	BW	WW	YW	Milk	MCE	MWW	API	TI	CWT	REA	Fat	Marb	
EPD	7.9	2.4	73.5	116.6	20.6	0.8	57.4	108.48	67.16	31.5	1.00	-0.11	-0.21	
Breed Rank	50	30	70	40	85	90	85	60	80	30	20	30	95	
		BW	205 Wt.	365 Wt.	ADG	WPDA								
		87	747	1280	3.33	3.51								

CE

☆☆

- Mandate crossed with the Opal family strikes again
- Opal 32C is one of the original "Opal" daughters in the herd, and one that has been highly productive and lucrative
- This guy has lots of style, functionality, smoothness, and length of spine
- Again, his daughters will be an asset to the herd, and his steer calves should push down the scale

23

R PLUS YUMA 9087G

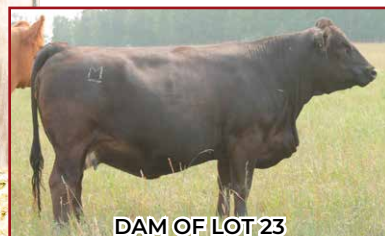
SIRE: R PLUS MANDATE 1044J

MISS R PLUS 4193B

LFE HEAVY HITTER 352C

DAM: MADER TIME LAPSE 185G

J ANCHOR DEW TIME 6X



DAM OF LOT 23



MATERNAL BROTHER OF LOT 23

## MADER FIGHT CLUB 13L

2 January 2023 • MDR 13L • BPG1437507

Homo Polled, Homo Black

	EPDs										Carcass EPDs			
	CE	BW	WW	YW	Milk	MCE	MWW	API	TI	CWT	REA	Fat	Marb	
EPD	9.8	2.1	74.1	117.8	13.2	4.6	50.3	113.17	69.49	29.1	0.92	-0.09	-0.11	
Breed Rank	30	25	65	40	100	45	100	45	65	40	40	75	70	
		BW	205 Wt.	365 Wt.	ADG	WPDA								
		86	790	1259	2.93	3.43								

CE

☆☆

- A bull that stems from a massive barreled, big footed, power type of momma cow
- A recent daughter just sold through our Ladies Night sale to Rocking WC
- The Heavy daughters express large pelvic areas and a wide pin spread, and are proving to have great milking ability
- An honest birthweight of 86lbs, and boasting an actual WW of 830lbs



24

R PLUS YUMA 9087G

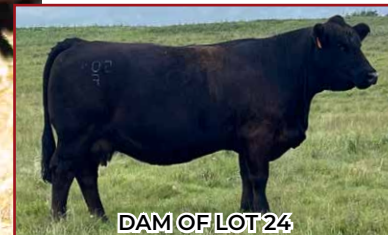
SIRE: R PLUS MANDATE 1044J

MISS R PLUS 4193B

LFE HEAVY HITTER 352C

DAM: MADER CHARM 508F

MADER GOODLUCK CHARM 139Y



DAM OF LOT 24



MATERNAL SISTER OF LOT 24

## MADER DOWN TO THE WIRE

2 January 2023 • MDR 22L • BPG1437512

Homo Polled, Homo Black

	EPDs										Carcass EPDs		
	CE	BW	WW	YW	Milk	MCE	MWW	API	TI	CWT	REA	Fat	Marb
EPD	8.4	3.0	78.0	123.0	19.0	4.8	58.0	109.03	70.23	34.2	0.94	-0.10	-0.15
Breed Rank	45	40	50	25	90	45	85	60	55	20	35	50	85

BW	205 Wt.	365 Wt.	ADG	WPDA
87	831	1348	3.23	3.70

CE



- A pen favorite here expressing lots of angularity and dimension
- The Charm 508F female is a big powerful Heavy Hitter daughter that milks heavy and raises 'em big
- A maternal sister recently sold to Sharples Ranch in our Ladies Night sale
- This bull should be a female maker, while still offering an excellent growth curve to his progeny with an actual weaning weight of 885lbs himself

25

R PLUS YUMA 9087G

SIRE: R PLUS MANDATE 1044J

MISS R PLUS 4193B

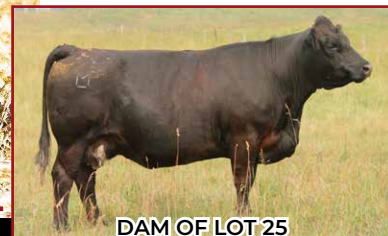
LFE THE RIDDLER 323B

DAM: MADER JUST FRIENDS 22D

WHEATLAND ENVY 281Z



LOT 25



DAM OF LOT 25

## MADER TREASON 70L

9 January 2023 • MDR 70L • BPG1437531

Polled, Homo Black

	EPDs										Carcass EPDs		
	CE	BW	WW	YW	Milk	MCE	MWW	API	TI	CWT	REA	Fat	Marb
EPD	9.4	2.1	80.1	129.0	21.4	5.0	61.5	115.78	73.33	32.0	1.01	-0.09	-0.15
Breed Rank	35	25	40	20	80	40	70	35	35	25	20	65	85

BW	205 Wt.	365 Wt.	ADG	WPDA
85	860	1329	2.93	3.66

CE



- This is the 5th consecutive son that the Just Friends 22D female has produced, and man have they been consistently good
- A momma cow with great feet and an ideal udder, she is so naturally thick and capacious, and more than pays her way yearly
- This bull is a typical son out of her with his wide pin spread, width of quarter, is stout over that top, and very complete
- A very consistent EPD profile and weans off with an actual WW of 890lbs



26

R PLUS YUMA 9087G

SIRE: R PLUS MANDATE 1044J

MISS R PLUS 4193B

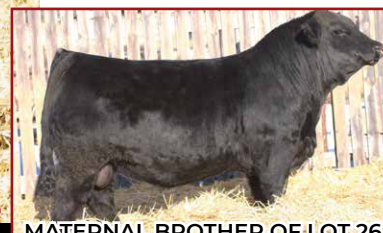
WHEATLAND HIGH OCTANE169Y

DAM: MADER SUGAR CANE 48C

MADER P IRON SUGAR 7X



DAM OF LOT 26



MATERNAL BROTHER OF LOT 26

# MADER TIDAL WAVE 87L

11 January 2023 • MDR 87L • BPG1437538

Homo Polled, Homo Black

EPD	EPDs										Carcass EPDs			
	CE	BW	WW	YW	Milk	MCE	MWW	API	TI	CWT	REA	Fat	Marb	
Breed Rank	45	30	50	30	50	55	55	25	30	40	1	55	45	
	BW	205 Wt.	365 Wt.	ADG	WPDA									
	90	857	1358	3.13	3.74									

CE



-The maternal sibling to the \$100,000 Mader Nightshift bull that lead off the 2023 bull sale selling to Sjogren Farms, Canadian Sires, and Gold Star Genetics  
 -The Sugar Cane 48C female has been as good of a black cow as any, producing numerous top offspring, and expressing a beautiful udder design, is feminine, big ribbed, milks heavy, and stems from the many time proven Ironsugar 7X donor  
 -A maternal sister was sold in our 2022 Ladies Night sale to Labatte Simmentals for \$17,000  
 -A big spread from birth to weaning and a nice balanced set of EPDs  
 -This guy carries that big natural muscle shape and expression that Night Shift has, and will be an asset to any herd moving forward

27

R PLUS YUMA 9087G

SIRE: R PLUS MANDATE 1044J

MISS R PLUS 4193B

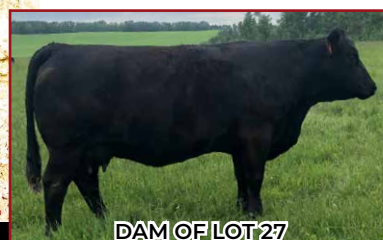
MRL EL TIGRE 52Z

DAM: PERKS NINA 515F

PERKS NINA 215A



MATERNAL BROTHER OF LOT 27



DAM OF LOT 27

# MADER MACHINE 83L

11 January 2023 • MDR 83L • BPG1437536

Homo Polled, Hetero Black

EPD	EPDs										Carcass EPDs			
	CE	BW	WW	YW	Milk	MCE	MWW	API	TI	CWT	REA	Fat	Marb	
Breed Rank	75	70	30	15	100	80	90	75	60	20	2	35	95	
	BW	205 Wt.	365 Wt.	ADG	WPDA									
	93	829	1362	3.33	3.74									

CE



-Maternal brothers have been purchased by Klaudt Ranches, Alm Ranches, and Sjogren Farms the past three years  
 -This is this cows 4th sale bull and that speaks colors of her milking ability and the type and kind she is  
 -This guy is a dude, lots of base, an attractive look and front third, loads of middle third, and is stout through his stifle and twist region  
 -An 850lb actual weaning weight, this bull should produce calves that push down the scale



# 28

R PLUS YUMA 9087G

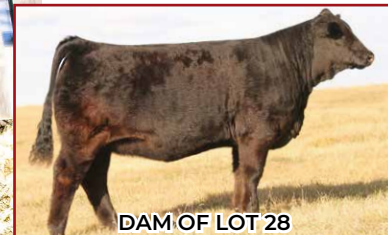
SIRE: R PLUS MANDATE 1044J

MISS R PLUS 4193B

LFE THE RIDDLER 323B

DAM: MADER BLACKGOLD 72F

MADER BLACKGOLD 80B



DAM OF LOT 28



MATERNAL BROTHER OF LOT 28

## MADER ALL OF THE LIGHTS 41L

3 January 2023 • MDR 41L • BPG1437518

Homo Polled, Homo Black

	EPDs										Carcass EPDs		
	CE	BW	WW	YW	Milk	MCE	MWW	API	TI	CWT	REA	Fat	Marb
EPD	7.8	3.0	84.4	134.9	21.8	4.0	64.0	114.14	74.88	37.2	1.06	-0.10	-0.13
Breed Rank	50	40	25	10	75	55	55	40	30	15	10	55	80

BW	205 Wt.	365 Wt.	ADG	WPDA
83	829	1362	3.33	3.74

CE



-A maternal brother sold in last years sale as a performance bull to Waterton Colony for \$7500  
 -The Riddler females are among our favorite sire groups in the cowherd, out producing themselves year after year  
 -This guy is packed full of shape, being explosive in his muscle pattern, and wide through his pins and quarter  
 -These Mandate sons all weaned off big and that's what you can expect these sons will pass on

# 29

R PLUS YUMA 9087G

SIRE: R PLUS MANDATE 1044J

MISS R PLUS 4193B

LFE HEAVY HITTER 352C

DAM: MADER OPAL 3G

MADER OPAL 28C



PATERNAL GRANDSIRE



SIRE OF LOT 29

## MADER BOSTON 73L

10 January 2023 • MDR 73L • BPG1437532

Homo Polled, Hetero Black

	EPDs										Carcass EPDs		
	CE	BW	WW	YW	Milk	MCE	MWW	API	TI	CWT	REA	Fat	Marb
EPD	7.0	3.6	84.0	132.3	15.4	2.7	57.4	106.27	71.46	40.9	1.04	-0.10	-0.19
Breed Rank	60	50	25	15	100	75	85	70	50	10	15	45	95

BW	205 Wt.	365 Wt.	ADG	WPDA
90	817	1302	3.03	3.55

CE



-A very maternal pedigree when you analyze his pedigree and see sires that are female makers such as Rplus Yuma, Rplus Blackedge, LFE heavy Hitter and Harvie Wallbanger  
 -This bull is smooth made, from his small head, sleek shoulder, and lighter bone structure  
 -His dam has tremendous body capacity and barrel to her, she travels on a big foot, and is easy to appreciate  
 -Another Mandate crossed with Heavy Hitter combination that will make you a quick ROI



30

HART INTERSTATE 102E

SIRE: KWA INTERSTATE 203J

CROWE BUTTON 20E

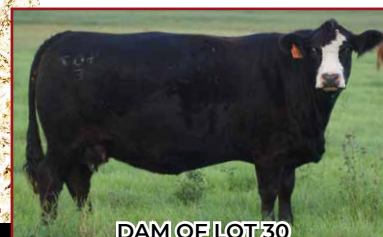
SPRINGCREEK OLYMPIAN 66A

DAM: MADER BLACKGOLD 407E

MADER BLACKGOLD 9A



LOT 30



DAM OF LOT 30

# MADER **INSIDE JOB** 48L

5 January 2023 • MDR 48L • BPG1437521

**Homo Polled, Homo Black**

	EPDs										Carcass EPDs			
	CE	BW	WW	YW	Milk	MCE	MWW	API	TI	CWT	REA	Fat	Marb	
EPD	7.6	4.6	88.6	134.6	19.8	3.6	64.1	106.31	75.23	36.7	1.24	-0.08	-0.12	
Breed Rank	55	70	15	10	90	60	55	70	25	15	1	85	75	
		BW	205 Wt.	365 Wt.	ADG	WPDA								
		94	865	1436	3.57	3.94								

CE



-A bull that you like for his depth, dimension, his mass, masculinity, and overall balance and eye appeal  
 -A maternal sister recently sold in the Ladies Night sale for \$17,000 to KCH Cattle Co, and last years son sold to Cayley Colony  
 -The dam is a big powerful black blaze cow with a superb udder attachment and teat size, and always brings in a high caliber calf  
 -This is the first calf crop out of the KWA Interstate bull that we acquired for \$22,000, as a genetic outcross, and a curve bending set of EPDs  
 -Many cattleman and women will find this bull as they sort through the pens, as he is flat out impressive

31

HART INTERSTATE 102E

SIRE: KWA INTERSTATE 203J

CROWE BUTTON 20E

SPRINGCREEK OLYMPIAN 66A

DAM: MADER ENVY 411E

WHEATLAND ENVY 281Z



LOT 31



DAM OF LOT 31

# MADER **OUTLAW** 118L

20 January 2023 • MDR 118L • BPG1437553

**Homo Polled, Homo Black**

	EPDs										Carcass EPDs			
	CE	BW	WW	YW	Milk	MCE	MWW	API	TI	CWT	REA	Fat	Marb	
EPD	9.7	3.5	71.4	110.9	17.2	5.4	52.9	102.34	65.24	28.3	1.10	-0.07	-0.16	
Breed Rank	30	50	75	55	95	35	100	80	90	35	4	95	90	
		BW	205 Wt.	365 Wt.	ADG	WPDA								
		89	755	1294	3.37	3.55								

CE



-A 3/4 brother to the bull above, trending that great blaze face, and boasting the great round muscle shape that Interstate passes down  
 -There is a lot to like about this young herdsire, he is so stylish and sound structured, is super hairy, moves like a cat, and shows great future  
 -The Envy cow family have proven themselves to elevate foot and udder quality and putting some chrome on your calf crop is always a bonus



32

HART INTERSTATE 102E

SIRE: KWA INTERSTATE 203J

CROWE BUTTON 20E

LFE THE RIDDLER 323B

DAM: MADER CAT HOUSE 35D

DOWNHILL BLACK LADY 12W



LOT 32



MATERNAL BROTHER OF LOT 32

# MADER STORM WARNING 129L

23 January 2023 • MDR 129L • BPG1437559

Polled, Hetero Black

	EPDs										Carcass EPDs		
	CE	BW	WW	YW	Milk	MCE	MWW	API	TI	CWT	REA	Fat	Marb
EPD	9.2	3.3	89.6	145.3	25.7	6.1	70.5	116.31	79.29	41.0	1.28	-0.09	-0.11
Breed Rank	35	45	10	3	50	25	25	35	15	10	1	75	70

	BW	205 Wt.	365 Wt.	ADG	WPDA
	89	837	1365	3.30	3.75

CE



-A performance driven individual that stems from one of our favorite Riddler daughters in the whole herd  
 -Dam has great feet, very sound and level udder, and dominates year after year in terms of quality production  
 -A maternal brother sold as a highlight bull last year to Stahlville Farming for \$11,000  
 -His overall length of spine, softness, maternal background, and easy fleshing ability make this bull an ideal herdbull candidate

33

HART INTERSTATE 102E

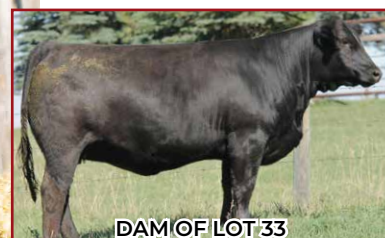
SIRE: KWA INTERSTATE 203J

CROWE BUTTON 20E

MADER PEARL HARBOUR 149F

DAM: MADER TIMELESS 115H

J ANCHOR DEW TIME 6X



DAM OF LOT 33



MATERNAL GRANDDAM

# MADER FORCE FIELD 110L

17 January 2023 • MDR 110L • BPG1437548

Homo Polled, Hetero Black

	EPDs										Carcass EPDs		
	CE	BW	WW	YW	Milk	MCE	MWW	API	TI	CWT	REA	Fat	Marb
EPD	11.2	1.9	78.4	122.7	18.3	5.4	57.5	114.94	73.72	32.3	1.15	-0.08	-0.09
Breed Rank	20	20	45	30	95	35	85	40	35	25	3	90	65

	BW	205 Wt.	365 Wt.	ADG	WPDA
	84	803	1326	3.27	3.55

CE



-A genetic combination here that should allow this bull to be used on bigger heifers or young cows to reduce birthweight and increase calving ease  
 -This bull ranks in the top 20% for CE and YW, and the top 30% for BW and WW  
 -Much like his sire, he is big footed, has loads of muscle and width from behind  
 -His Heavy Hitter dam is moderate in stature but mighty in production



# 34

HART INTERSTATE 102E

SIRE: KWA INTERSTATE 203J

CROWE BUTTON 20E

LFE HEAVY HITTER 352C

DAM: MADER KITTIE CAT 76G

MADER CAT HOUSE 35D



LOT 34



DAM OF LOT 34

## MADER ROUTE 20 153L

2 February 2023 • MDR 153L • BPG1437576

Homo Polled, Homo Black

EPD	EPDs										Carcass EPDs			
	CE	BW	WW	YW	Milk	MCE	MWW	API	TI	CWT	REA	Fat	Marb	
Breed Rank	35	40	10	4	90	30	55	40	15	5	1	80	65	
		BW	205 Wt.	365 Wt.	ADG	WPDA								
		85	851	1427	3.60	3.89								

CE



- Really like the spread in this younger bull, born at 85lbs, weans at 851lbs, and has a yearling of 1427lbs
- As the picture shows, he is very round in that muscle shape, and very wide through his loin and pins
- A maternal brother was selected by Beniuk Farms last year, a bull that could be used to moderate birthweights as should calve well
- His young dam is another great Heavy Hitter daughter, stemming back to the Cat House 35D female, a favorite Riddler cow, and the dam to lot 32

# 35

HART INTERSTATE 102E

SIRE: KWA INTERSTATE 203J

CROWE BUTTON 20E

LFE HEAVY HITTER 352C

DAM: MADER SUGAR 515F

MADER SUGAR CRUSH 213B



MATERNAL BROTHER OF LOT 35



MATERNAL SISTER OF LOT 35

## MADER PAN-AMERICAN 160L

5 February 2023 • MDR 160L • BPG1437581

Homo Polled, Homo Black

EPD	EPDs										Carcass EPDs			
	CE	BW	WW	YW	Milk	MCE	MWW	API	TI	CWT	REA	Fat	Marb	
Breed Rank	25	15	45	25	90	20	85	45	30	25	2	80	65	
		BW	205 Wt.	365 Wt.	ADG	WPDA								
		78	785	1302	3.23	3.59								

CE



- A stacked pedigree with greats such as Interstate, High Roller, Discovery and Cobra all tied into one package
- You will note that grandam is a full sister to Mader Walk This Way, a very influential AI sire in the breed
- A bull that should work well on heifers, with just a 78lb BW, and ranking in the top 25% for CE and 15% for BW
- Moderate in stature, but a bull packed full of meat and potatoes
- Last years maternal brother sold to Trout Creek Cattle Co



# 36

NGDB STRUCTURE 34D

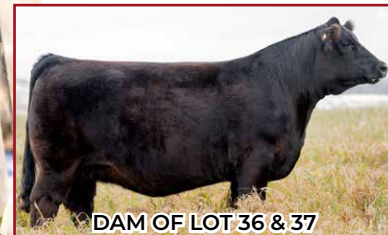
**SIRE:** RF SHAKEDOWN 074H

IPU MS. COWBOY CUT 135D

SSC SHELL SHOCKED 44B

**DAM:** RUSGOLD MS SCHOCKEM 3G

BARLEE GOLDBLOCKS



DAM OF LOT 36 & 37



MATERNAL BROTHER OF LOT 36

## MADER INVASION 124L

21 January 2023 • MDR 124L • BPTG1437621

**Homo Polled, Homo Black**

	EPDs										Carcass EPDs		
	CE	BW	WW	YW	Milk	MCE	MWW	API	TI	CWT	REA	Fat	Marb
EPD	5.5	5.8	100.2	142.2	19.9	1.8	70.0	126.60	88.09	40.0	0.84	-0.08	0.24
Breed Rank	75	90	2	4	85	85	25	10	1	10	60	95	2

BW	205 Wt.	365 Wt.	ADG	WPDA
97	1019	1552	3.33	4.25

**CE**



-One of the highest ranked performance bulls on offer with a 1019lb Adj WW, and a 1552lb Adj YW

-Talk about a bull with loads of middle third, lots of muscle power through that back end, extra length of body, all while upholding a great structure and foot quality

-His dam was purchased as the lead off black female from Border City a few years back and entered the donor program promptly

-Last years full brother was lot 2 in the catalogue, and sold to Brice Medin for \$11,500

-If extra growth is on your radar, look no further than Invasion 124L

# 37

NGDB STRUCTURE 34D

**SIRE:** RF SHAKEDOWN 074H

IPU MS. COWBOY CUT 135D

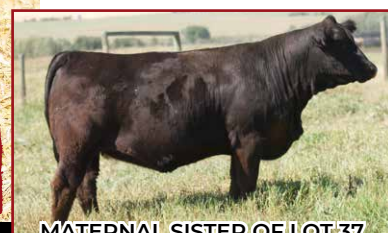
SSC SHELL SHOCKED 44B

**DAM:** RUSGOLD MS SCHOCKEM 3G

BARLEE GOLDBLOCKS



SIRE OF LOT 36 & 37



MATERNAL SISTER OF LOT 37

## MADER SOUND OF FREEDOM

19 January 2023 • MDR 117L • BPTG1437618

**Homo Polled, Homo Black**

	EPDs										Carcass EPDs		
	CE	BW	WW	YW	Milk	MCE	MWW	API	TI	CWT	REA	Fat	Marb
EPD	5.5	4.4	85.2	120.9	19.9	1.8	62.5	123.25	80.69	28.8	0.69	-0.08	0.24
Breed Rank	75	70	20	30	85	85	65	15	10	40	90	95	2

BW	205 Wt.	365 Wt.	ADG	WPDA
99	838	1291	2.83	3.53

**CE**



-A full brother to the above bull, expressing many of the same great characteristics like length of spine, extension through that neck, broad based, and sound footed

-The Shell Shocked dam is a standout donor, with so much body capacity, femininity, and foot quality

-A bull recommended for use on cows to accelerate weaning weights and offer some maternal daughters

-The Shakedown sire group were absolute standouts in our sale last year demanding top dollar



38

NGDB STRUCTURE 34D

SIRE: RF SHAKEDOWN 074H

IPU MS. COWBOY CUT 135D

MADER FULL MONEY 145X

DAM: MADER A LIST 214B

MFR ROCKET GIRL 9122W



MATERNAL BROTHER OF LOT 38



MATERNAL BROTHER OF LOT 38

# MADER RUN THIS TOWN 35L

3 January 2023 • MDR 35L • BPG1437515

Homo Polled, Homo Black

	EPDs										Carcass EPDs			
	CE	BW	WW	YW	Milk	MCE	MWW	API	TI	CWT	REA	Fat	Marb	
EPD	3.9	5.9	90.7	124.9	22.5	3.1	67.9	113.76	77.93	27.5	0.69	-0.09	0.08	
Breed Rank	90	90	10	25	70	70	35	40	15	45	90	65	15	
		BW	205 Wt.	365 Wt.	ADG	WPDA								
		88	834	1351	3.23	3.71								

CE



-This is a full brother to last years \$16,000 bull selling to Wild T Farms as lot 4  
 -Very similar in type and kind to his brother, he offers extra length, frame, rib shape, and overall balance and dimension  
 -The dam to this guy is an absolute rig of a cow in terms of power and easy fleshing ability, and we are retaining every daughter that comes along  
 -Sired by the \$70,000 RF Shakedown sire who has left us with a hell of a good set of daughters we are currently calving out

39

NGDB STRUCTURE 34D

SIRE: RF SHAKEDOWN 074H

IPU MS. COWBOY CUT 135D

CG BLACK NUGGET 25N

DAM: CG BLACK OPAL 652S

CG BLACK OPAL 214 M



DAM OF LOT 39



MATERNAL BROTHER OF LOT 39

# MADER ALL SHOOK UP 149L

31 January 2023 • MDR 149L • BPTG1437629

Homo Polled, Homo Black

	EPDs										Carcass EPDs			
	CE	BW	WW	YW	Milk	MCE	MWW	API	TI	CWT	REA	Fat	Marb	
EPD	2.9	6.5	98.2	134.6	20.4	1.0	69.5	122.68	82.87	38.8	0.84	-0.09	0.14	
Breed Rank	95	95	2	10	85	90	25	20	5	10	60	60	5	
		BW	205 Wt.	365 Wt.	ADG	WPDA								
		94	928	1403	2.97	3.84								

CE



-One of your last chances to acquire a direct son out of the famous Opal 652S donor female that is now deceased  
 -This guy is thick, he's big topped, has lots of hip, is sound footed, and really has a herdbull presence  
 -You will want to retain every daughter off this bull, as the udder and teat size, and foot quality, are well above the breed standards  
 -Performance oriented individual with a 928lb Adj WW, and a 1403lb Adj YW  
 -The Opal sons have been in high demand for many years, don't miss your opportunity to own one



40

TJSC BOONE PICKENS 46C

SIRE: MADER SON OF ANARCHY 144H  
LFE BS SHEILA 82A

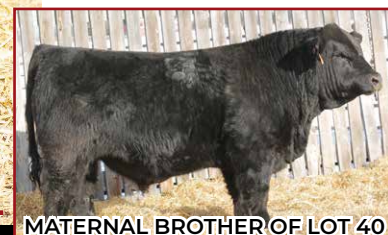
LFE HEAVY HITTER 352C

DAM: MADER OPAL 83F

MADER OPAL 210B



DAM OF LOT 40



MATERNAL BROTHER OF LOT 40

## MADER PURSUIT 53L

6 January 2023 • MDR 53L • BPG1437522

Homo Polled, Homo Black

EPD	EPDs										Carcass EPDs		
	CE	BW	WW	YW	Milk	MCE	MWW	API	TI	CWT	REA	Fat	Marb
	8.5	1.6	83.3	123.0	15.6	2.9	57.3	110.73	73.19	32.6	0.91	-0.08	-0.18
Breed	45	20	25	25	100	70	90	50	40	25	40	80	90

BW	205 Wt.	365 Wt.	ADG	WPDA
81	825	1406	3.63	3.85

CE



-Here is a prime example of a calving ease bull that will still offer you some added pounds come weaning, giving you less headaches and more \$\$ in your jeans  
 -A standout son sired by the \$50,000 Son of Anarchy bull, that's has consistently delivered us a premium product over and over  
 -This bull has lots of lower quarter and twist, he's big through his rib, than he comes into a narrow shoulder and small skull design  
 -Another proven descendant of the superior Opal cow family, meaning the daughters will be remarkable replacements

41

TJSC BOONE PICKENS 46C

SIRE: MADER SON OF ANARCHY 144H  
LFE BS SHEILA 82A

BROOKING FIREBRAND 606B

DAM: MADER SUGAR 129J

MADER P IRON SUGAR 7X



LOT 41



DAM OF LOT 41

## MADER TRIGGER 140L

27 January 2023 • MDR 140L • BPRS1437567

Homo Polled, Homo Black

EPD	EPDs										Carcass EPDs		
	CE	BW	WW	YW	Milk	MCE	MWW	API	TI	CWT	REA	Fat	Marb
	8.9	2.1	87.7	130.4	24.1	5.5	68.0	105.40	73.82	27.0	0.77	-0.05	-0.08
Breed	40	25	15	15	60	35	35	70	35	45	80	100	60

BW	205 Wt.	365 Wt.	ADG	WPDA
83	879	1418	3.37	3.71

CE



-A 3/4 blood bull with a real smooth shoulder design, a light bone column, and a small head, ideal for calving ease  
 -You do still have to admire the body shape this bull carries though, and he is ample in muscle expression, and moves very freely  
 -His dam is an embryo daughter sired by the legendary Brooking Firebrand, and out of the great Ironsugar 7X cow family  
 -A 3/4 brother was a favorite last year selling to Jon Rairdan for \$8000



42

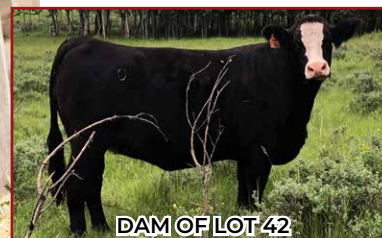
TJSC BOONE PICKENS 46C

SIRE: MADER SON OF ANARCHY 144H  
LFE BS SHEILA 82A

IPU BENTLEY 81F

DAM: RUST MS ANGEL 048H

HARRELL ANGEL 5870C



DAM OF LOT 42



SIRE OF LOT 42

MADER **CHARLESTON** 123L

21 January 2023 • MDR 123L • BPTG1437620

Homo Polled, Homo Black

	EPDs										Carcass EPDs			
	CE	BW	WW	YW	Milk	MCE	MWW	API	TI	CWT	REA	Fat	Marb	
EPD	10.4	0.8	72.9	103.1	18.5	3.6	55.0	104.01	67.77	15.7	0.82	-0.08	-0.21	
Breed Rank	25	10	70	75	95	60	95	75	75	90	70	90	95	
		BW	205 Wt.	365 Wt.	ADG	WPDA								
		84	781	1277	3.10	3.42								

CE



- An embryo bull here that is gonna add that extra color to his calf crop
- His IPU Bentley dam is a gorgeous young cow, exemplifying an ideal udder attachment, great body design, and a big foot
- A calving ease candidate with a low BW, and a favorable set of EPDs
- Identify them Simmental with some added chrome

43

TJSC BOONE PICKENS 46C

SIRE: MADER SON OF ANARCHY 144H  
LFE BS SHEILA 82A

MADER WALK THIS WAY 224B

DAM: MADER OPAL 132J

CG BLACK OPAL 652S



PATERNAL GRANDDAM



MATERNAL GRANDDAM

MADER **PETERBURG** 112L

17 January 2023 • MDR 112L • BPG1437549

Homo Polled, Homo Black

	EPDs										Carcass EPDs			
	CE	BW	WW	YW	Milk	MCE	MWW	API	TI	CWT	REA	Fat	Marb	
EPD	9.7	1.7	78.3	115.6	19.7	5.3	58.9	119.61	72.93	25.0	0.83	-0.09	-0.10	
Breed Rank	30	20	45	45	90	35	80	25	40	55	65	60	65	
		BW	205 Wt.	365 Wt.	ADG	WPDA								
		80	749	1240	3.07	3.21								

CE



- Heifer bull ALERT
- 80lb birthweight, small skulled, smooth fronted, and light boned
- Son of Anarchy has been our calving ease specialist on heifers the past two years, and he has also been utilized to maintain low birthweights in our summer calving program
- His dam is none other than a Walk This Way daughter onto the great "Opal" cow family



# 44

TJSC BOONE PICKENS 46C

**SIRE:** MADER SON OF ANARCHY 144H  
LFE BS SHEILA 82A

MADER WALK THIS WAY 224B

**DAM:** MADER FLIRT 143J

RF CERTAINLY FLIRTIN 525C



MATERNAL GRANDDAM



MATERNAL GRANDSIRE

## MADER STOCKHOLM 100L

15 January 2023 • MDR 100L • BPG1437543

Homo Polled, Homo Black

	EPDs										Carcass EPDs		
	CE	BW	WW	YW	Milk	MCE	MWW	API	TI	CWT	REA	Fat	Marb
EPD	9.8	1.7	78.6	121.8	19.4	3.9	58.7	112.92	71.86	24.2	0.83	-0.08	-0.16
Breed Rank	30	20	45	30	90	55	80	45	45	60	65	85	90

	BW	205 Wt.	365 Wt.	ADG	WPDA
	80	788	1263	2.97	3.28

CE



-Another calving ease bull out of the \$50,000 Son of Anarchy sire  
-A royally bred bull with Walk This Way and the RF 202Z cow on the bottom side of his pedigree  
-He's stout, he's hairy, and he will allow you to sleep through the night

# RS

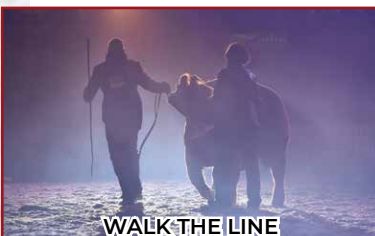
NCB COBRA 47Y

**SIRE:** MADER WALK THIS WAY 224B  
MADER P IRON SUGAR 7X

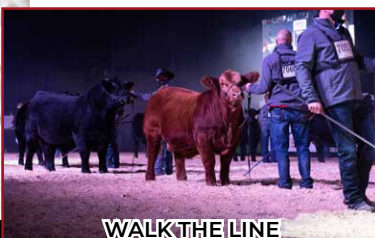
MR HOC BROKER

**DAM:** IRCC DARLIN' 613D

DESTINY ODIN SHEA



WALK THE LINE



WALK THE LINE

## MADER WALK THE LINE 92J

17 January 2021 • MDR 92J • PTG1358996

Homo Polled, Red

	EPDs										Carcass EPDs		
	CE	BW	WW	YW	Milk	MCE	MWW	API	TI	CWT	REA	Fat	Marb
EPD	11.2	1.9	116.7	171.5	26.7	8.4	85.1	126.44	96.79	48.5	0.98	-0.10	-0.09
Breed Rank	20	25	1	1	40	10	1	10	1	1	25	40	65

	BW	205 Wt.	365 Wt.	ADG	WPDA
	87	1042	1530	3.05	4.21

CE



Here is a breeding piece that we have watched develop from a young age, and he just continues to get better and better! The genetic union of combining two of the most prolific animals in the breed, has proven to be an absolute home run. Mader Walk This Way adds extra hair, muscle definition, quality of structure and athleticism, and with Cobra and Ironsugar stacked into his pedigree, you will get loads of maternal excellence. IRCC Darlin' continues to overwhelm us, designing progeny with eye appeal, tremendous skeleton structure, impeccable foot quality, and overall consistency on both females and bulls. Mader Walk The Line is ALL bull!



45

MADER WALK THIS WAY 224B

SIRE: MADER WALK THE LINE 923

IRCC DARLIN' 613D

MADER WOLF PACK 150A

DAM: MADER COUGAR 23D

WHS MISS HANNAH 69B



DAM OF LOT 45



MATERNAL SISTER OF LOT 45

## MADER JACKSON 16L

2 January 2023 • MDR 16L • PG1437508

Homo Polled, Red

EPD	EPDs										Carcass EPDs			
	CE	BW	WW	YW	Milk	MCE	MWW	API	TI	CWT	REA	Fat	Marb	
Breed Rank	9.0	3.1	104.1	151.0	30.8	6.0	82.9	119.27	87.63	43.0	1.04	-0.10	-0.10	
	40	40	1	2	25	25	1	25	1	4	15	50	65	
		BW	205 Wt.	365 Wt.	ADG	WPDA								
		90	957	1480	3.27	4.08								

CE

☆☆

-An absolute standout red bull due to his added mass and power, his extra muscle definition, his big foot, and his overall presence and balance

-From a young age, this bull expressed so much maturity and masculinity, and has always been a leader on the scale

-His dam is a farm favorite, continuously bringing in one of the best calves, including a daughter that sold at FNL a few years back to MAVV Farms for \$15,000, and a son selling to Flying V Cattle Co for \$10,000

-His granddam, Hannah 69B, has also been a very influential cow, retaining all of her daughters in the herd, and selling top sons out of her to top producers like Downhill Simmentals and RJS Land and Cattle

-This herdbull is destined for great things and one which we believe will be very influential for a purebred or commercial herd to add pounds and produce ideal replacements

-Check out his actual WW of 1020lbs, and his actual yearling of 1510lbs

46

MADER WALK THIS WAY 224B

SIRE: MADER WALK THE LINE 923

IRCC DARLIN' 613D

SVS TYCOON 841F

DAM: DEEG MS HAYLEY 18H

DEEG MS HAYLEY 68C



LOT 46



MATERNAL GRANDSIRE

## MADER AIN'T NO GRAVE 38L

23 January 2023 • MDR 38L • PG1437516

Homo Polled, Red

EPD	EPDs										Carcass EPDs			
	CE	BW	WW	YW	Milk	MCE	MWW	API	TI	CWT	REA	Fat	Marb	
Breed Rank	7.6	4.5	110.0	154.9	27.0	7.1	82.0	113.89	88.19	38.9	0.96	-0.11	-0.11	
	55	70	1	1	40	15	1	40	1	10	30	35	70	
		BW	205 Wt.	365 Wt.	ADG	WPDA								
		93	901	1482	3.63	3.98								

CE

☆☆

-Sired by the \$280,000 Walk The Line sire, and out of a top producing daughter of the leading SVS Tycoon herdbull

-He is blood red in color, carries so much muscle expression, is stout ribbed, wide based, and very sound moving

-His Tycoon dam has a nice dark foot, a very functional udder, and is an easy fleshing female who pours her heart into production

-A pound producer, ranking in the top 1% of breed for WW, YW, and MWWT, and weaning off with an actual weight of 845lbs

-Another standout bull that will be easily found in the pens



47

MADER WALK THIS WAY 224B

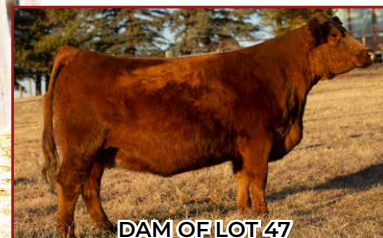
SIRE: MADER WALK THE LINE 92J

IRCC DARLIN' 613D

RF PATRIOT 762E

DAM: WF CREAM SODA 64J

RF CREAM SODA 520C



DAM OF LOT 47



MATERNAL SISTER OF LOT 47

# MADER RUSTY CAGE 167L

11 February 2023 • MDR 167L • PTG1437584

Homo Polled, Red

	EPDs										Carcass EPDs		
	CE	BW	WW	YW	Milk	MCE	MWW	API	TI	CWT	REA	Fat	Marb
EPD	8.0	3.3	103.5	153.4	23.4	3.5	75.2	118.82	88.30	47.2	0.99	-0.10	-0.01
Breed Rank	50	45	1	1	65	65	10	25	1	2	20	50	35

BW	205 Wt.	365 Wt.	ADG	WPDA
86	968	1437	2.93	3.76

CE



-He has had that herdbull look from a young age, and being one of the youngest bulls in the sale, we really admire his added growth and performance to compete with the older bulls  
 -He is moderate in stature, but mighty in power, expressing a lot of natural thickness and angularity, carries loads of muscle and width of top, and is very athletic when put in motion  
 -His dam was purchased through the Friday Nights Lights sale for \$25k, and has quickly become a top donor based on her unique lineage and her superior structure and type  
 -A full sister to this bull was recently sold through FNL for \$13,500 to Scott Morrison, and we anxiously await many more siblings to hit the ground in 2024

48

MADER WALK THIS WAY 224B

SIRE: MADER WALK THE LINE 92J

IRCC DARLIN' 613D

MADER P BLK RANSOM 23U

DAM: MADER COVER GIRL 130Z

JHNS BLK COVER 426U



MATERNAL BROTHER OF LOT 48



MATERNAL SISTER OF LOT 48

# MADER COCAINE BLUES 12L

2 January 2023 • MDR 12L • PG1437506

Homo Polled, Red

	EPDs										Carcass EPDs		
	CE	BW	WW	YW	Milk	MCE	MWW	API	TI	CWT	REA	Fat	Marb
EPD	10.5	1.2	85.3	125.7	23.0	6.9	65.7	122.96	79.81	30.7	0.71	-0.10	-0.02
Breed Rank	25	15	20	25	65	15	45	15	10	30	90	60	35

BW	205 Wt.	365 Wt.	ADG	WPDA
84	803	1304	3.13	3.57

CE



-His dam, Covergirl 130Z has been very influential, never failing to bring in a great calf each fall, and always milking hard to produce one that tops the scales  
 -This guy weans off with an actual WW of 850lbs, has extra length, added volume, and is very sound structured with a great stride and foot  
 -The Walk The Line calves are so consistent and high quality as you will see in these bulls, and the females were easily the heavyweights at weaning too and will be our top replacements  
 -We sold 5 Walk the Line daughters this past year averaging \$18,000 on them



49

MADER WALK THIS WAY 224B

SIRE: MADER WALK THE LINE 923

IRCC DARLIN' 613D

WFL BLINDLINE 28D

DAM: MADER OPAL 545F

MADER OPAL 72D



MATERNAL BROTHER OF LOT 49



MATERNAL BROTHER OF LOT 49

# MADER HIGHWAYMAN 96L

14 January 2023 • MDR 96L • PG1437541

Homo Polled, Red

EPD	EPDs										Carcass EPDs		
	CE	BW	WW	YW	Milk	MCE	MWW	API	TI	CWT	REA	Fat	Marb
Breed Rank	91	2.7	100.1	145.7	25.2	5.8	75.3	120.30	84.65	39.2	0.98	-0.10	-0.12
	35	35	2	3	50	30	10	25	3	10	25	50	75
		BW	205 Wt.	365 Wt.	ADG	WPDA							
		82	889	1444	3.47	3.94							

CE

☆☆

-A dark red Walk The Line son that resembles the same length of spine, muscle expression, softness, and sound structure that his sire upholds  
 -Last fall on the show and sale road, it was very rewarding to see how many WTL calves were represented, mostly to see that those who purchased semen packs, they were their top calves  
 -A very interesting pedigree incorporating the Opal cow family into the red gene pool, and combining maternal strength with the Darlin' cow family  
 -Take this opportunity to acquire a top WTL son who will sire heavy weight calves, and leave you with more maternal strength in the replacement pen

50

MADER WALK THIS WAY 224B

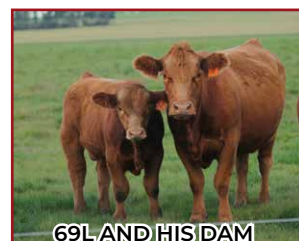
SIRE: MADER WALK THE LINE 923

IRCC DARLIN' 613D

SVS BETTS 808F

DAM: MADER PROPOSAL 35H

MADER PROPOSAL 93C



69L AND HIS DAM



MATERNAL GRANDSIRE

# MADER GET RHYTHM 69L

8 January 2023 • MDR 69L • PG1437530

Homo Polled, Red

EPD	EPDs										Carcass EPDs		
	CE	BW	WW	YW	Milk	MCE	MWW	API	TI	CWT	REA	Fat	Marb
Breed Rank	9.3	3.3	96.4	142.5	22.7	7.5	70.9	112.98	81.10	35.5	0.91	-0.10	-0.14
	35	45	3	4	70	15	20	45	10	15	40	45	80
		BW	205 Wt.	365 Wt.	ADG	WPDA							
		89	831	1364	3.33	3.65							

CE

☆☆

-A very consistent set of EPD data on this fella, thriving in performance, while still maintaining some calving ease  
 -Get Rhythm moves like a cat, is proud structured carrying his posture well, has excess hair and volume, and will continue to grow into a real nice bull to analyze  
 -He gets extra mass and performance from his Betts sired dam, who milks heavy, and offers a lot of maternal with the Sage donor and the MRL Game Changer sire on the bottom side  
 -A very strong individual that will be an asset to any program



51

MADER WALK THIS WAY 224B

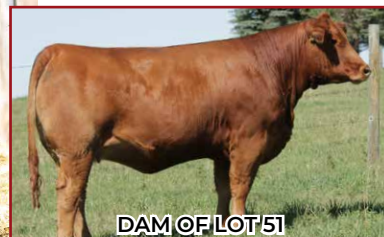
SIRE: MADER WALK THE LINE 923

IRCC DARLIN' 613D

SVS BETTS 808F

DAM: MADER JULIET 13H

MADER JULIET 210C



DAM OF LOT 51



MATERNAL GRANDSIRE

## MADER FIRED UP 3L

1 January 2023 • MDR 3L • PG1437505

Homo Polled, Red

	EPDs										Carcass EPDs		
	CE	BW	WW	YW	Milk	MCE	MWW	API	TI	CWT	REA	Fat	Marb
EPD	12.3	1.2	88.7	130.5	24.7	9.3	69.1	117.99	79.93	31.9	0.89	-0.09	-0.13
Breed Rank	15	15	15	15	55	3	30	30	10	25	50	60	80
		BW	205 Wt.	365 Wt.	ADG	WPDA							
		73	780	1303	3.27	3.48							

CE  
☆☆

- A compact bull with lots of width over his top, lots of lower twist and stifle muscle, all while maintaining an attractive front third
- His Betts dam is a real solid young cow, that has proved her milking ability in her first two calves, and will be an asset for years to come
- He ranks in the top 15% for CE, BW, WW, and YW
- Just a low 73lb birthweight and weaning off with an actual weaning weight of 800lbs

52

MADER WALK THIS WAY 224B

SIRE: MADER WALK THE LINE 923

IRCC DARLIN' 613D

RUST RIO GRANDE 7022 ET

DAM: MADER LADY 35G

MADER LADY FEVER 17C



DAM OF LOT 52



MATERNAL BROTHER OF LOT 52

## MADER I'VE BEEN EVERYWHERE

6 January 2023 • MDR 55L • PG1437523

Homo Polled, Red

	EPDs										Carcass EPDs		
	CE	BW	WW	YW	Milk	MCE	MWW	API	TI	CWT	REA	Fat	Marb
EPD	8.1	3.6	101.8	152.6	21.4	3.4	72.3	-	-	40.2	1.02	-0.09	-0.15
Breed Rank	50	50	1	1	80	65	15	-	-	10	15	60	85
		BW	205 Wt.	365 Wt.	ADG	WPDA							
		95	804	1407	3.77	3.81							

CE  
☆☆

- Maternal strength is high in this prospect, with Darlin' 613D on the top side, and the Flirtin 2022 cow and Lady Gold 131Y cow family on the bottom
- A cow bull that will add length, frame, and functionality into his offspring
- His maternal brother was a powerhouse last year selling to Wolf Creek Colony
- This bull has a bright future and will work well on cows to produce added pounds and stretch



53

SVS BETTS 808F

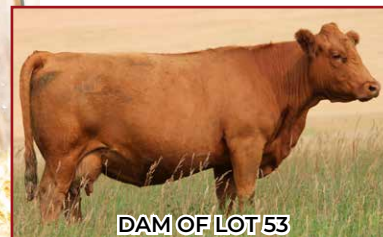
SIRE: MADER DISPATCH 25J

MADER P MODERATION 32W

MRL GAME CHANGER 12A

DAM: MADER HAPPY ENDING 90C

MADER P GLORY ROAD 93X



DAM OF LOT 53



MATERNAL BROTHER OF LOT 53

## MADER SAVAGE 142L

28 January 2023 • MDR 142L • PG1437568

Homo Polled, Red

	EPDs										Carcass EPDs		
	CE	BW	WW	YW	Milk	MCE	MWW	API	TI	CWT	REA	Fat	Marb
EPD	6.4	4.9	97.6	138.0	23.1	5.2	71.9	104.91	77.89	38.8	1.16	-0.09	-0.19
Breed Rank	70	75	3	10	65	35	20	70	15	10	3	70	95

	BW	205 Wt.	365 Wt.	ADG	WPDA
	96	998	1521	3.27	4.19

CE

☆☆

-This would be one of the highest performing red bulls on test this year, and no surprise when he weans off at 950lbs  
 -A bull that is full of red meat, carries so much rib shape and depth of body, and still tracks out with ease  
 -He resembles his sire, Dispatch 25J, so much, a past high seller for \$26,000 to McLaughlin Farms  
 -The dam to this bull is one of our favorite MRL Game Changer daughters, milking heavy and weaning off pounds, while still upholding a great body score year round

54

SVS BETTS 808F

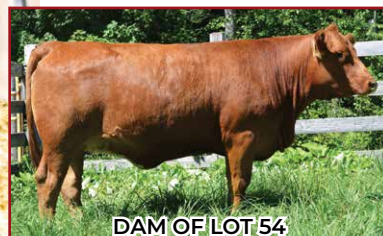
SIRE: MADER DISPATCH 25J

MADER P MODERATION 32W

HIDDEN H SWEET MEAT

DAM: FGAF DUSTY ROSE 117D

LRX DUSTY ROSE 56Z



DAM OF LOT 54



MATERNAL BROTHER OF LOT 54

## MADER ACTIVATE 144L

29 January 2023 • MDR 144L • PG1437569

Homo Polled, Red

	EPDs										Carcass EPDs		
	CE	BW	WW	YW	Milk	MCE	MWW	API	TI	CWT	REA	Fat	Marb
EPD	7.1	5.3	98.0	138.9	21.6	5.2	70.6	104.00	78.49	37.4	1.04	-0.09	-0.15
Breed Rank	60	85	3	10	75	35	25	75	15	15	15	75	85

	BW	205 Wt.	365 Wt.	ADG	WPDA
	93	897	1366	2.93	3.76

CE

☆☆

-A maternal brother sold for \$9000 last year to Verdant Valley Farming as a top performance bull  
 -This bull is very well put together as he is loose hided, has lots of depth of rib and flank, is very fluid in his movement, and is attractive to look at  
 -The Dusty Rose 117D cow continues to out produce herself, milking heavy with a beautiful udder attachment, and always weaning the big ones  
 -The Dispatch calves all excel on actual weaning weights, and all rank in the top percentile for WW and YW EPDs



# 55

SVS BETTS 808F

**SIRE:** MADER DISPATCH 25J  
MADER P MODERATION 32W

WFL BLINDLINE 28D

**DAM:** MADER SIERRA 142F  
CROSSROAD SIERRA 524S



MATERNAL BROTHER OF LOT 55



MATERNAL BROTHER OF LOT 55

## MADER ESTATE 134L

24 January 2023 • MDR 134L • PG1437563

Homo Polled, Red

EPD	EPDs										Carcass EPDs		
	CE	BW	WW	YW	Milk	MCE	MWW	API	TI	CWT	REA	Fat	Marb
	7.6	4.7	91.8	130.2	26.3	7.2	72.2	108.10	73.73	32.3	1.02	-0.09	-0.25
Breed	55	75	10	15	45	15	15	60	35	25	15	65	100

BW	205 Wt.	365 Wt.	ADG	WPDA
90	881	1452	3.57	3.99

CE  
☆☆

-A big boy in the pen, weaning off at 855lbs, and has continued to gain well and excel on growth and performance  
-A maternal brother last year was also one of the top performers in the pen, and sold to Rob Tindal  
-His dam is a descendant of the Sierra 524S donor cow, a cow family responsible of producing more pounds and more dollars for us through sons in this bull sale, than any other red cow  
-Udder quality is ideal in his dam, and she is that real easy fleshing, broody made type of female that flat out works

# 56

SVS BETTS 808F

**SIRE:** MADER DISPATCH 25J  
MADER P MODERATION 32W

WFL WESTCOTT 24C

**DAM:** MADER MALIBU 98F  
MADER P MALIBU 40W



MATERNAL GRANDSIRE



SIRE OF LOT 56

## MADER THE JESTER 98L

14 January 2023 • MDR 98L • PG1437542

Homo Polled, Red

EPD	EPDs									Carcass EPDs			
	CE	BW	WW	YW	Milk	MCE	MWW	API	TI	CWT	REA	Fat	Marb
	5.8	5.4	87.5	122.6	8.2	2.4	62.0	97.11	69.60	36.1	1.06	-0.08	-0.22
Breed	75	85	15	30	95	75	65	90	60	15	10	85	100

BW	205 Wt.	365 Wt.	ADG	WPDA
94	775	1287	3.20	3.53

CE  
☆☆

-A performance driven pedigree here, combining the pound making Betts and Westcott sires  
-Two sires that have enhanced weaning weights in our program, and produced daughters with lots of maternal and milk  
-This bull is balanced made with ample muscle, good thickness throughout, and travels with ease



57

SVS BETTS 808F

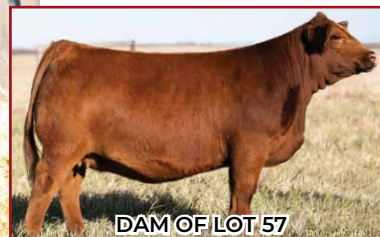
SIRE: MADER DISPATCH 25J

MADER P MODERATION 32W

R PLUS RELOAD 2006Z

DAM: ULTRA 30B CAREY 77H

ULTRA MISS CAREY 30B



DAM OF LOT 57



MATERNAL BROTHER OF LOT 57

# MADER KING CHARLES 132L

24 January 2023 • MDR 132L • PG1442729

Homo Polled, Red

	EPDs									Carcass EPDs			
	CE	BW	WW	YW	Milk	MCE	MWW	API	TI	CWT	REA	Fat	Marb
EPD	5.6	5.2	91.6	129.3	16.0	4.1	61.8	94.35	71.66	39.7	1.07	-0.09	-0.24
Breed Rank	75	80	10	20	100	55	65	95	50	10	10	60	100

CE



-Really nice type and kind of bull here, very complete in his makeup, very sound and correct in his structure

-We purchased his dam for \$25k in the Friday Nights sale, and her first calf was kept back for our own use, as a leading red heifer bull

-The dam milks heavy, carries so much volume and capacity, and is the type you love looking at year round

58

SVS BETTS 808F

SIRE: MADER DISPATCH 25J

MADER P MODERATION 32W

MADER CHIEF OF STAFF 99F

DAM: MADER LADY 177H

ERIXON LADY 121D



MATERNAL GRANDDAM



FULL BROTHER TO GRANDSIRE

# MADER BIG BLIND 113L

17 January 2023 • MDR 113L • PG1437550

Homo Polled, Red

	EPDs									Carcass EPDs			
	CE	BW	WW	YW	Milk	MCE	MWW	API	TI	CWT	REA	Fat	Marb
EPD	6.7	4.4	84.5	120.3	18.3	4.4	60.6	101.09	71.55	31.4	0.97	-0.09	-0.13
Breed Rank	65	70	25	35	95	50	75	85	50	30	25	80	80
		BW	205 Wt.	365 Wt.	ADG	WPDA							
		85	774	1307	3.33	3.49							

CE



-Masculine made, so much depth of body, a moderate stature bull that has a lot of mass and base

-His dam is real nice dark red female, that has great udder suspension, and stems back to a main donor cow, Erixon Lady 121D

-A modest birthweight bull with adequate growth numbers, he would work well on first or second calvers to maintain calving ease while offering good genetic grow



59

SVS BETTS 808F

**SIRE:** MADER DEEP SOUTH 720H  
MADER DEEP SOUTH 17D

RUST RIO GRANDE 7022 ET

**DAM:** MADER COVER GIRL 22G  
MADER COVER GIRL 130Z



DAM OF LOT 59



MATERNAL SISTER OF LOT 59

# MADER FOUR SEASONS 161L

6 February 2023 • MDR 161L • PG1437582

Homo Polled, Red

	EPDs								Carcass EPDs				
	CE	BW	WW	YW	Milk	MCE	MWW	API	TI	CWT	REA	Fat	Marb
EPD	7.3	3.6	78.6	117.7	17.4	2.4	56.7			24.9	0.84	-0.08	-0.12
Breed Rank	55	50	45	40	95	80	90			55	65	90	75
		BW	205 Wt.	365 Wt.	ADG	WPDA							
		85	822	-	-	-							

CE



- One of two sons sired by Deep South, a powerful Betts son that we sold to Westman Farms and JK Cattle
- Much like his sire, his skeleton structure is very balanced, he is mild tempered, and he expresses good volume and shape
- We really appreciate the small teat and balanced udder on his dam, and she is following her dams footsteps of being such consistent producer
- A maternal sister just sold in our Ladies Night sale for \$15,000 to KCH Cattle

60

SVS BETTS 808F

**SIRE:** MADER DEEP SOUTH 720H  
MADER DEEP SOUTH 17D

MADER UNIVERSAL 65F

**DAM:** MADER GLORY ROAD 134H  
MADER GLORY ROAD 321D



SIRE OF LOT 60



MATERNAL GRANDSIRE

# MADER ALABAMA 157L

2 February 2023 • MDR 157L • PG1437579

Homo Polled, Red

	EPDs										Carcass EPDs		
	CE	BW	WW	YW	Milk	MCE	MWW	API	TI	CWT	REA	Fat	Marb
EPD	7.0	3.7	83.8	126.1	16.4	1.6	58.3	101.94	71.49	32.9	1.00	-0.08	-0.16
Breed Rank	60	55	25	20	100	85	85	80	50	25	20	85	90
		BW	205 Wt.	365 Wt.	ADG	WPDA					CE		
		81	813	-	-	-							

CE



- A moderate framed bull that carries lots of middle third in terms of enhanced rib shape and softness
- Some might remember the Universal bulls we sold last year, they were high performance, and these Universal daughters are milking heavy and producing the right kind
- Another great candidate for first or second calvers to minimize birthweight, and maintain growth



61

BGS/BM CAPTAIN SCREAM 63D

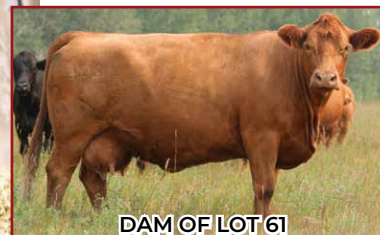
SIRE: SVS BETTS 808F

WFL RED SAGE 506C

MRL GAME CHANGER 12A

DAM: MADER MERCEDES 204C

IPU MS. MERCEDES 111W



DAM OF LOT 61



MATERNAL BROTHER OF LOT 61

MADER **FREELANCE** 89L

12 January 2023 • MDR 89L • PG1437539

**Homo Polled, Red**

	EPDs										Carcass EPDs			
	CE	BW	WW	YW	Milk	MCE	MWW	API	TI	CWT	REA	Fat	Marb	
EPD	7.2	4.7	73.7	110.8	20.5	6.9	57.4	101.72	64.93	21.4	0.80	-0.09	-0.15	
Breed Rank	60	75	65	55	85	15	85	80	90	70	75	75	85	
		BW	205 Wt.	365 Wt.	ADG	WPDA								
		94	803	1336	3.33	3.67								

CE



-This is a really complete Betts son that stacks up to any red bull in the pen for size and power

-The Betts sire has been very influential in our program, selling over 40 sons the past few years, with great reports on how they are performing in many operations

-We have sold two full brothers to this bull over the past couple years to both the Steed brothers, and Habberfield Cattle co

-The Game Changer daughters are among our favorite red cows in the herd with accelerated foot and udder quality

62

BGS/BM CAPTAIN SCREAM 63D

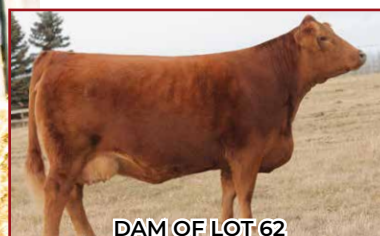
SIRE: SVS BETTS 808F

WFL RED SAGE 506C

NCB COBRA 47Y

DAM: MADER LADY 50G

ERIXON LADY 202S



DAM OF LOT 62



UDDER ON 50G

MADER **LAUNCH** 125L

21 January 2023 • MDR 125L • PG1437558

**Homo Polled, Red**

	EPDs										Carcass EPDs			
	CE	BW	WW	YW	Milk	MCE	MWW	API	TI	CWT	REA	Fat	Marb	
EPD	11.0	2.3	84.0	123.5	23.8	9.3	65.8	117.41	74.87	25.5	0.90	-0.09	-0.15	
Breed Rank	20	30	25	25	60	3	45	30	30	55	45	75	85	
		BW	205 Wt.	365 Wt.	ADG	WPDA								
		76	792	1325	3.33	3.56								

CE



-His dam is the 2021 National Champion Simmental female, also making the top 10 in the CWA Beef Supreme

-Lady 50G stems from a long list of "Lady" females in the herd, and is making her mark with past high sellers such as a \$42,000 son, and a recent \$15,500 female to Downhill Simmentals

-This bull expresses Betts round muscle shape, has lots of width over his top, and should be a real female maker

-Great udder quality and milking ability in the Lady cow family



63

R PLUS YUMA 9087G

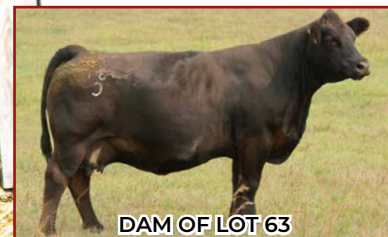
SIRE: R PLUS MANDATE 1044J

MISS R PLUS 4193B

LRX THE GODFATHER 141Z

DAM: MADER OPAL 31C

CG BLACK OPAL 652S



DAM OF LOT 63



MATERNAL BROTHER OF LOT 63

MADER **FEARLESS** 56L

7 January 2023 • MDR 56L • PG1437524

Homo Polled, Red

	EPDs										Carcass EPDs		
	CE	BW	WW	YW	Milk	MCE	MWW	API	TI	CWT	REA	Fat	Marb
EPD	8.4	2.7	83.0	130.1	22.6	1.9	64.1	111.49	72.81	39.6	1.08	-0.11	-0.21
Breed Rank	45	35	30	15	70	80	55	50	40	10	10	30	95

	BW	205 Wt.	365 Wt.	ADG	WPDA
	85	837	1450	3.83	3.97

CE



- Fearless is a standout in the red pen for his size, his power, his mature look, and his docility
- A big rugged bull that pushes down the scale and has the thickness and muscle pattern that we strive for
- Both of his parents being black, he offers a outcross red pedigree to someone seeking new blood
- His dam is a never miss cow, weaning her offspring big, she has an ideal phenotype in terms of udder and foot quality, and natural easy doing ability
- Last years maternal brother sold to VV Colony Farming for \$10,000
- He will add pounds with an 875lb actual weaning weight, and a yearling weight just shy of 1500lbs

64

LFE VEGAS 3145A

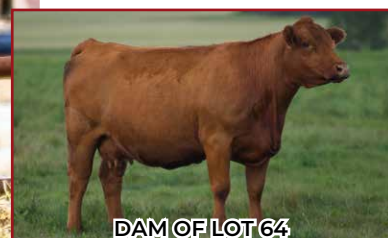
SIRE: DMF CAPITAL GAINS 828F

DMF MS TUCKER 112Y

MADER THE NATIONAL 43E

DAM: MADER SUGAR 609G

MADER SUGAR CRUSH 213B



DAM OF LOT 64



SIRE OF LOT 64

MADER **STOCK MARKET** 131L

24 January 2023 • MDR 131L • PG1437560

Homo Polled, Red

	EPDs										Carcass EPDs		
	CE	BW	WW	YW	Milk	MCE	MWW	API	TI	CWT	REA	Fat	Marb
EPD	9.0	3.6	85.7	130.6	24.8	6.5	67.7	112.44	75.05	31.9	1.07	-0.9	-0.13
Breed Rank	40	50	20	15	55	20	35	45	30	25	10	80	80

	BW	205 Wt.	365 Wt.	ADG	WPDA
	85	832	1403	3.57	3.82

CE



- A bull with added length of spine, adequate depth of rib, good muscle definition, and very sound on his feet and legs
- One of the few Capital Gains sons this year, a sire that has worked very well adding performance and functionality to his offspring
- We do really like his dam, a female double bred Cobra, with his grandam being a full sister to Mader Walk This Way
- He ranks in the top 20% for WW and YW, and boasts an 832lb Adj WW

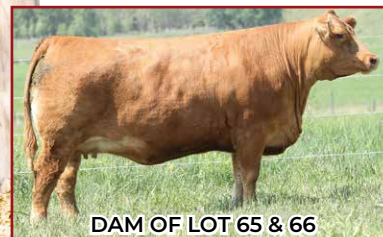


65

SVS CAPTAIN MORGAN 11Z

SIRE: BGS/BM CAPTAIN SCREAM 63D  
RF SCREAM 215Z

SVS CAPTAIN MORGAN 11Z

DAM: RUST MISS SADIE 505C  
TNT MISS SADIE M68

DAM OF LOT 65 &amp; 66



MATERNAL BROTHER OF LOT 65

MADER **CAPTAIN OBVIOUS** 79L

10 January 2023 • MDR 79L • PTG1437595

**Homo Polled, Red**

	EPDs										Carcass EPDs			
	CE	BW	WW	YW	Milk	MCE	MWW	API	TI	CWT	REA	Fat	Marb	
EPD	5.5	6.0	91.7	132.5	13.4	3.5	59.3	92.16	71.35	36.7	0.91	-0.08	-0.20	
Breed Rank	75	90	10	15	100	65	80	100	50	15	40	85	95	
		BW	205 Wt.	365 Wt.	ADG	WPDA								
		90	795	1296	3.13	3.56								

CE



-An embryo mating combining the powerhouse Captain Scream with our matron donor, Lady 505C

-This pedigree doubles up on utilizing the great Captain Morgan sire, a bull responsible for many great ones of the breed

-This bull is soft sided, loose hided, clean and smooth through that front third, and can really get out and move

-The 505C donor has sold many sons through this sale being high sellers, and we have retained most daughters in the herd as great production cows

66

SVS CAPTAIN MORGAN 11Z

SIRE: BGS/BM CAPTAIN SCREAM 63D  
RF SCREAM 215Z

SVS CAPTAIN MORGAN 11Z

DAM: RUST MISS SADIE 505C  
TNT MISS SADIE M68

SIRE OF LOT 65 &amp; 66



MATERNAL BROTHER OF LOT 66

MADER **TOP SHELF** 62L

8 January 2023 • MDR 62L • PTG1437593

**Homo Polled, Red**

	EPDs										Carcass EPDs			
	CE	BW	WW	YW	Milk	MCE	MWW	API	TI	CWT	REA	Fat	Marb	
EPD	5.5	6.0	91.7	132.5	13.4	3.5	59.3	92.16	71.35	36.7	0.91	-0.08	-0.20	
Breed Rank	75	90	10	15	100	65	80	100	50	15	40	85	95	
		BW	205 Wt.	365 Wt.	ADG	WPDA								
		83	774	1259	3.03	3.46								

CE



-A full brother to the bull above, another Captain Scream son with some added frame and stretch to him

-The 505C donor has been very influential, helping add power and body to her offspring, while still allowing improvement of foot and udder quality

-This bull is small headed and smooth shouldered, and should work well on some first or second calvers to minimize BW while not sacrificing growth



67

MAR MAC UTAH WHISKY 52E

SIRE: WLB TOP TIER 456G

WLB 47Y FAE 343E

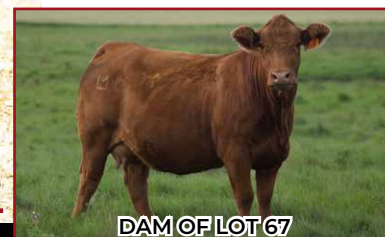
SVS BETTS 808F

DAM: MADER SWEET HEAT 709H

MADER SWEET HEAT 152A



LOT 67



DAM OF LOT 67

MADER **ROLEX** 21L

Homo Polled, Red

2 January 2023 • MDR 21L • PG1437511

	EPDs										Carcass EPDs		
	CE	BW	WW	YW	Milk	MCE	MWW	API	TI	CWT	REA	Fat	Marb
EPD	12.5	2.1	82.0	114.9	23.4	6.4	64.4	109.78	73.16	24.9	0.88	-0.08	-0.17
Breed Rank	10	25	30	45	65	20	55	55	40	55	50	85	90

	BW	205 Wt.	365 Wt.	ADG	WPDA
	80	853	1360	3.17	3.65

CE

☆☆☆

-We feel this bull has a bright future as a calving ease sire, ranking in the top 10% for CE, 25% for BW, and still maintaining good numbers for performance

-With just an 80lb birthweight out of a first calf heifer, she still weaned him off at 875lbs

-The dam is a gorgeous young Betts daughter, very feminine, has loads of volume and body capacity, strong udder, and nice foot

-This bull is power packed of meat and muscle, he shows early maturity, and will be that bull you love to analyze for years to come

68

MAR MAC UTAH WHISKY 52E

SIRE: WLB TOP TIER 456G

WLB 47Y FAE 343E

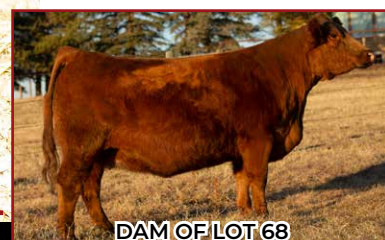
RF PATRIOT 762E

DAM: WF CREAM SODA 64J

RF CREAM SODA 520C



SIRE OF LOT 68



DAM OF LOT 68

MADER **NEW DIRECTION** 133L

Homo Polled, Red

24 January 2023 • MDR 133L • PG1437562

	EPDs										Carcass EPDs		
	CE	BW	WW	YW	Milk	MCE	MWW	API	TI	CWT	REA	Fat	Marb
EPD	11.1	2.3	81.4	116.8	21.8	3.4	62.5	117.99	76.24	29.8	0.86	0.09	-0.02
Breed Rank	20	30	35	40	75	65	65	30	20	35	55	65	35

	BW	205 Wt.	365 Wt.	ADG	WPDA
	82	820	1305	3.03	3.41

CE

☆☆☆

-Another 82lb heifer bull candidate, ranking in the top 20-30% percentile for CE and BW

-This is the natural calf off of the WF 64J donor cow, who we just recently sold a daughter out of for \$13,500 at Friday Night Lights

-We purchased this female for \$25k out of FNL as a heifer calf and she has not disappointed, another son sells as lot 47

-He is deep sided, has lots of flank and heartgirth, is wide topped, and bold in his design



69

HART INTERSTATE 102E

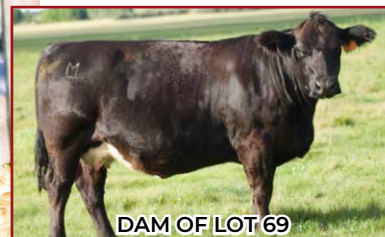
SIRE: KWA INTERSTATE 203J

CROWE BUTTON 20E

BGS/BM CAPTAIN SCREAM 63D

DAM: KCH VIOLET 910G

LFE BS VIOLET 641A



DAM OF LOT 69



MATERNAL BROTHER OF LOT 69

MADER **ELEMENTAL** 114L

18 January 2023 • MDR 114L • PG1437551

**Homo Polled, Red**

	EPDs										Carcass EPDs		
	CE	BW	WW	YW	Milk	MCE	MWW	API	TI	CWT	REA	Fat	Marb
EPD	9.6	2.9	85.5	135.7	19.0	5.5	61.8	107.95	75.11	39.9	1.22	-0.08	-0.15
Breed Rank	30	35	20	10	90	35	65	60	25	10	1	85	85

	BW	205 Wt.	365 Wt.	ADG	WPDA
	85	806	1318	3.20	3.59

CE

☆☆☆

-Out of two black parents, sire being the curve bending Interstate sire, offering low birthweights and big performance data, and a Violet daughter who will offer shorter gestation and increase udder and foot design

-This bull should work well on larger heifers as a calving ease tool, with just an 85lb BW, and reads very balanced on paper for an EPD profile

-He offers lots of hair, a little chrome, piles of depth of body and dimension, and structural correctness

-Last years maternal brother sold to Y2 Cattle Company

70

MADER WALK THIS WAY 224B

SIRE: MADER INFINITE 17J

MADER BLACKGOLD 34G

SVS BETTS 808F

DAM: MADER OPAL 122J

CG BLACK OPAL 652S



SIRE OF LOT 70



PATERNAL GRANDDAM

MADER **SCENERIO** 159L

4 February 2023 • MDR 159L • PG1437580

**Homo Polled, Red**

	EPDs										Carcass EPDs		
	CE	BW	WW	YW	Milk	MCE	MWW	API	TI	CWT	REA	Fat	Marb
EPD	10.0	3.1	86.5	129.3	22.8	7.4	66.1	116.92	77.41	36.5	1.02	-0.10	-0.07
Breed Rank	30	40	20	20	70	15	45	30	20	15	15	55	55

	BW	205 Wt.	365 Wt.	ADG	WPDA
	80	796	1329	3.33	3.47

CE

☆☆☆

-A meat wagon that combines calving ease, maternal strength, and some punch, all in one package

-His sire Infinite, is a Walk This Way son that sold to the Steed brothers, and we were fortunate enough to walk with some heifers after Aling

-The maternal side of his pedigree is stacked with Betts and the leading Opal 652S donor cow

-This bull expresses so much width of top, muscle definition, and spring of rib, all while having an 80lb birthweight out of a first calver



71

WHL RED HEAT 1734E

SIRE: DEEG SHEAR FIRE 11J

DEEG MS SAGE 105G

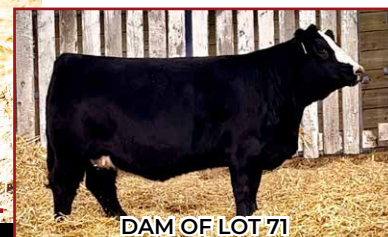
IPU BENTLEY 81F

DAM: PERKS MS DOLLY 17J

PWK MS DOLLY 74P 17C



SIRE OF LOT 71



DAM OF LOT 71

# MADER ALL FIRED UP 120L

21 January 2023 • MDR 120L • PG1437554

Homo Polled, Red

	EPDs										Carcass EPDs		
	CE	BW	WW	YW	Milk	MCE	MWW	API	TI	CWT	REA	Fat	Marb
EPD	9.6	2.0	80.2	118.1	19.4	6.8	59.5	124.60	77.73	26.2	0.93	-0.09	0.06
Breed Rank	30	25	40	40	90	20	80	15	15	50	35	65	15

BW	205 Wt.	365 Wt.	ADG	WPDA
81	801	1356	3.47	3.53

CE

☆☆☆

-This bull was purchased inside of his dam for \$13,000, as the lead off female at the Pembina Triangle sale

-A black badie dam, sired by a red calving ease sire, Deeg Shear Fire

-With just an 81lb birthweight, light bone, and small head, we feel this red blaze bull would work great calving easy, while still giving adequate pounds on his offspring come weaning time

-He is heavy muscled, broad based, and thick made

72

NCB COBRA 47Y

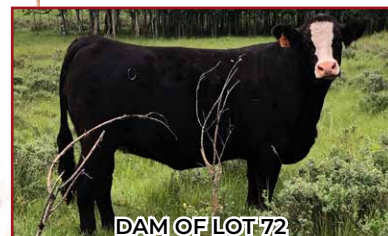
SIRE: MADER WALK THIS WAY 224B

MADER P IRON SUGAR 7X

IPU BENTLEY 81F

DAM: RUST MS ANGEL 048H

HARRELL ANGEL 5870C



DAM OF LOT 72



SIRE OF LOT 72

# MADER ROOM SERVICE 34L

3 January 2023 • MDR 34L • PG1437514

Homo Polled, Red

	EPDs									Carcass EPDs			
	CE	BW	WW	YW	Milk	MCE	MWW	API	TI	CWT	REA	Fat	Marb
EPD	11.2	0.3	87.4	127.5	22.4	6.7	66.1	118.45	81.19	27.6	0.90	-0.10	-0.07
Breed Rank	20	10	15	20	70	20	45	25	10	45	45	60	55

BW	205 Wt.	365 Wt.	ADG	WPDA
74	796	1276	3.00	3.41

CE

☆☆☆

-Here is the red blaze calving ease sensation, starting at 74lbs, and ranking in top 20% for BW and 10% for CE

-He is so smooth made from front to back, has very little shoulder, a small head, and very light in his bone

-Walk this Way has worked over and over for us on heifers, calving easy and throwing vigorous calves that are up sucking quickly

-The dam to this bull is a superior young black blaze cow to analyze, love her big body, tidy udder, and broodiness



73

LFE BLOCKBUSTER 3011C

SIRE: LFE HALL PASS 851G

LFE RS COCOA 658C

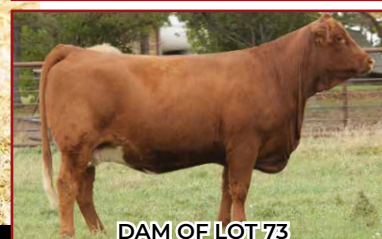
SVS BROOKS 669D

DAM: MAVV GWEN 54G

PARVIEW'S LADY KYRA 264Z



LOT 73



DAM OF LOT 73

# MADER SURVIVOR 928K

25 June 2022 • MDR 928K • PTG1437640

Homo Polled, Red

	EPDs										Carcass EPDs		
	CE	BW	WW	YW	Milk	MCE	MWW	API	TI	CWT	REA	Fat	Marb
EPD	6.3	4.9	84.4	125.1	26.6	-0.1	68.8	111.79	73.24	25.3	0.80	-0.10	-0.08
Breed Rank	70	75	25	25	45	95	30	50	40	55	75	55	60
	BW	205	Jan 7	WPDA									
	Wt.	Wt.	Wt.										
	82	734	1505	2.68									

CE



-A real performance driven bull here, that expresses tremendous depth of quarter, width of rib, and boldness

-A full brother was a highlight last year selling to the Stonemans for \$13,250, and a full sister recently sold in Ladies Night for \$14,000 to Ashworth Farm and Ranch

-The Hall Pass progeny are dark red in pigment, are very good on their feet and legs, and are very balanced, well put together cattle

-The dam of this guy is a favorite donor female, a Brooks daughter, who throws added performance and structural correctness

74

LFE VEGAS 3145A

SIRE: DMF CAPITAL GAINS 828F

DMF MS TUCKER 112Y

WFL DOWNTOWN 26D

DAM: MADER SIERRA 526F

MADER SIERRA 64C



SIRE OF LOT 74



MATERNAL GRANDSIRE

# MADER PRIME TIME 948K

9 July 2022 • MDR 948K • PG1437778

Polled, Red

	EPDs										Carcass EPDs		
	CE	BW	WW	YW	Milk	MCE	MWW	API	TI	CWT	REA	Fat	Marb
EPD	6.0	5.1	81.1	116.5	27.0	3.6	67.6	103.20	70.39	27.6	0.99	-0.10	-0.11
Breed Rank	70	80	35	40	40	60	35	80	55	45	25	45	70
	BW	205	Jan 7	WPDA									
	Wt.	Wt.	Wt.										
	87	668	1430	2.61									

CE



-A striking red baldie bull here that has good front end extension, carries lots of rib shape and dimension, and is very athletic on the move

-He stems from a great line of red blaze face cows, and his dam is a beauty, being tidy uddered and carrying great body capacity

-The Capital Gains sons are very consistent with lots of red meat and muscle, born with very reasonable birthweights, and showing good weaning growth

-He is dark red, will add some color to his calves, and his daughters will be sought after



75

LFE VEGAS 3145A

SIRE: DMF CAPITAL GAINS 828F

DMF MS TUCKER 112Y

KOP CROSBY 137W

DAM: MADER RAMONA 155F

CROSSROAD RAMONA 375R



SIRE OF LOT 75 - 78



MATERNAL GRANDDAM

# MADER WAR DANCE 945K

5 July 2022 • MDR 945K • PG1437649

Homo Polled, Red

	EPDs										Carcass EPDs		
	CE	BW	WW	YW	Milk	MCE	MWW	API	TI	CWT	REA	Fat	Marb
EPD	5.0	5.8	81.8	118.8	22.4	3.5	63.3	97.71	66.80	31.4	1.05	-0.10	-0.22
Breed Rank	80	90	35	35	70	65	60	90	80	30	15	40	100

BW	205 Wt.	Jan 7 Wt.	WPDA
85	726	1420	2.58

CE  
☆☆

- Starting with a modest BW of 85lbs, and shows a 726lb Adj WW, which reads well for the summer born calves weaning performance
- This bull shows a lot of depth of rib, he has a lot to offer over that top, and is wide based and stout
- His Crosby dam is a heavy milker, she has a nice dark foot, and is a big volume momma

76

LFE VEGAS 3145A

SIRE: DMF CAPITAL GAINS 828F

DMF MS TUCKER 112Y

KUNTZ SUPER DUTY 4Y

DAM: MADER DEEP SOUTH 17D

MADER SWEET HEAT 152A



MATERNAL BROTHER OF LOT 76



MATERNAL BROTHER OF LOT 76

# MADER HIGH TIDE 956K

25 July 2022 • MDR 956K • PG1437653

Homo Polled, Red

	EPDs										Carcass EPDs		
	CE	BW	WW	YW	Milk	MCE	MWW	API	TI	CWT	REA	Fat	Marb
EPD	7.2	4.2	76.1	112.5	22.2	2.0	60.3	100.05	67.10	26.5	1.00	-0.09	-0.16
Breed Rank	60	65	55	60	70	80	75	85	80	50	20	80	90

BW	205 Wt.	365 Wt.	WPDA
80	672	1520	2.86

CE  
☆☆

- The third consecutive son out of the Deep South 17D female, with sons working at both Westman Farms/JK Bar Cattle for \$10,000, and Kampen Cattle Co for \$7000
- Much like his brothers before, this bull carries a pile of depth of body, is deep through flank area, and strong through his heartgirth
- He travels on a nice big foot, is mild tempered, and will continue to grow into a front end herdsire
- The dam to this guy is a heavy milker, who always brings us in a front end calf



# 77

LFE VEGAS 3145A

SIRE: DMF CAPITAL GAINS 828F

DMF MS TUCKER 112Y

MRL GAME CHANGER 12A

DAM: MADER BIKINI CAR WASH 129D

C-K ZOOEY 36Y



MATERNAL BROTHER OF LOT 77



MATERNAL GRANDSIRE

## MADER FORGED IN FIRE 947K

8 July 2022 • MDR 947K • PG1437650

Homo Polled, Red

EPD	EPDs										Carcass EPDs		
	CE	BW	WW	YW	Milk	MCE	MWW	API	TI	CWT	REA	Fat	Marb
Breed Rank	7.5	5.0	72.6	105.7	22.7	5.0	59.0	93.98	58.85	25.5	0.79	-0.10	-0.35
	55	80	70	70	70	40	80	95	100	55	75	60	100
		BW	205 Wt.	365 Wt.	WPDA								
		88	824	1680	3.07								

CE



-One of the bigger performance bulls in the red offering, boasting an Adj WW of 824lbs, and weaning up there at the top of the pen

-His dam has been a hard worker, selling several other front end sons through this sale

-This bull is wide based, expresses lots of muscle expression and power from behind, and travels very freely

# 78

LFE VEGAS 3145A

SIRE: DMF CAPITAL GAINS 828F

DMF MS TUCKER 112Y

WFL TROJAN 63C

DAM: MADER MALIBU 15E

MADER P MALIBU 40W



MATERNAL SISTER OF LOT 78



MATERNAL GRANDSIRE

## MADER MISSING PIECE 954K

25 July 2022 • MDR 954K • PG1437652

Homo Polled, Red

EPD	EPDs										Carcass EPDs		
	CE	BW	WW	YW	Milk	MCE	MWW	API	TI	CWT	REA	Fat	Marb
Breed Rank	7.1	3.2	69.1	100.4	18.7	1.5	53.3	101.57	62.90	23.3	0.88	-0.09	-0.18
	60	45	85	80	95	85	100	80	95	60	50	65	90
		BW	205 Wt.	365 Wt.	WPDA								
		81	678	1500	2.83								

CE



-A heavy haired bull that characterizes ample substance, muscle design, and ruggedness

-He resembles his sire very much in terms of his structural correctness, masculinity, and completeness

-He has a low birthweight, and would be a good candidate to utilize in minimizing BW and calving easy on young cows



79

LFE VEGAS 3145A

**SIRE:** DMF CAPITAL GAINS 828F

DMF MS TUCKER 112Y

LBR CROCKET R81

**DAM:** MADER HONEY BEE 16Z

CROSSROAD SIERRA 524S



MATERNAL BROTHER OF LOT 79



MATERNAL GRANDDAM

# MADER UNFORGIVEN 943K

5 July 2022 • MDR 943K • PG1437648

**Homo Polled, Red**

	EPDs										Carcass EPDs		
	CE	BW	WW	YW	Milk	MCE	MWW	API	TI	CWT	REA	Fat	Marb
EPD	5.6	5.8	73.3	106.5	29.1	4.2	65.8	110.30	64.64	16.0	1.00	-0.08	-0.13
Breed Rank	75	90	70	65	30	50	45	55	90	90	20	80	80

	BW	205 Wt.	365 Wt.	WPDA
	80	676	1410	2.56

CE



-Bold in his design, powerfully constructed, and very good on his feet and legs  
 -He stems from the great Sierra 524S donor cow, a family that has produced numerous high selling bulls for us through this sale  
 -His dams last son sold to Ryan Stolson for \$13,000 two years back, and we just calved out a sister that has a perfect udder  
 -This bull is more standoffish with others, seems to want to keep his distance when singled out, give him space and he will be fine.

80

S A V RENOWN 3439

**SIRE:** S A V RENOVATION 6822

S A V MADAME PRIDE 0151

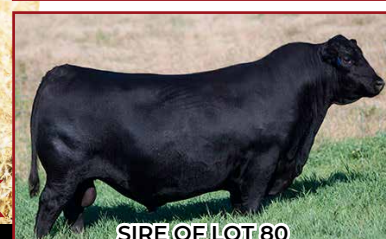
CG BLACK NUGGET 25N

**DAM:** CG BLACK OPAL 652S

CG BLACK OPAL 214 M



DAM OF LOT 80



SIRE OF LOT 80

# MADER HUMBLE 909K

14 June 2022 • MDR 909K • BPTRS1437756

**Homo Polled, Homo Black**

	EPDs										Carcass EPDs		
	CE	BW	WW	YW	Milk	MCE	MWW	API	TI	CWT	REA	Fat	Marb
EPD	8.3	2.6	85.4	133.8	19.8	3.2	62.5	121.12	78.79	52.3	0.68	-0.03	0.23
Breed Rank	45	30	20	10	90	65	65	20	15	1	95	100	2

	BW	205 Wt.	365 Wt.	WPDA
	82	658	1520	2.66

CE



-A 1/2 blood bull sired by the industry leading SAV Renovation, and backed by our famous Opal 652S donor female  
 -This is the end of an era, as the Opal 652S cow is now deceased, and these will be the last sons on offer  
 -A cow family responsible for increasing udder and foot quality, and flat out working time and time again  
 -We feel with his small skull, smooth shoulder, and light bone structure, that this bull would work well on heifers or young cows to reduce BW, while still maintaining adequate growth



81

NCB COBRA 47Y

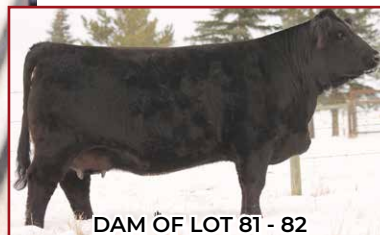
SIRE: MADER WALK THIS WAY 224B

MADER P IRON SUGAR 7X

SVS CAPTAIN MORGAN 11Z

DAM: RF CERTAINLY FLIRTIN 525C

RF CERTAINLY FLIRTIN 202Z



DAM OF LOT 81 - 82



FULL BROTHER OF LOT 81 - 82

# MADER STATE OF SHOCK 934K

1 July 2022 • MDR 934K • BPTG1437645

Homo Polled, Homo Black

	EPDs										Carcass EPDs		
	CE	BW	WW	YW	Milk	MCE	MWW	API	TI	CWT	REA	Fat	Marb
EPD	8.4	2.4	85.7	137.2	22.6	3.0	65.5	115.41	78.08	32.3	0.90	-0.09	-0.07
Breed Rank	45	30	20	10	70	70	45	35	15	25	45	70	55

BW	205 Wt.	365 Wt.	WPDA
88	736	1500	2.82

CE



-A Walk This Way son that resembles his sire so much, he has a great haircoat, is extended through that front third, has lots of thickness and volume throughout, and is round and abundant in his muscle pattern

-Walk this Way offers style and eye appeal, while the RF 525C female adds punch and power

-He ranks in the top 20% for WW and 10% for YW

-This bull is more standoffish with others, seems to want to keep his distance when singled out, give him space and he will be fine.

82

NCB COBRA 47Y

SIRE: MADER WALK THIS WAY 224B

MADER P IRON SUGAR 7X

SVS CAPTAIN MORGAN 11Z

DAM: RF CERTAINLY FLIRTIN 525C

RF CERTAINLY FLIRTIN 202Z



SIRE OF LOT 81 - 82



MATERNAL BROTHER OF LOT 82

# MADER TREASON 926K

24 June 2022 • MDR 926K • BPTG1437639

Homo Polled, Homo Black

	EPDs										Carcass EPDs		
	CE	BW	WW	YW	Milk	MCE	MWW	API	TI	CWT	REA	Fat	Marb
EPD	8.4	2.1	82.8	133.0	22.6	3.0	64.0	114.77	76.66	30.5	0.87	-0.09	-0.07
Breed Rank	45	25	30	15	70	70	55	40	20	30	55	70	55

BW	205 Wt.	365 Wt.	WPDA
84	691	1470	2.62

CE



-Much like his full brother above, you really appreciate the skeleton structure and functionality of these siblings

-They will pass on great haircoats, extra grow, and increase the quality in your replacement pen

-Several sons and daughters have been sold off the Certainly Flirtin 525C donor, including highlights such as a \$20,000 daughter, and a son selling for \$13,000



83

NCB COBRA 47Y

SIRE: MADER WALK THIS WAY 224B  
MADER P IRON SUGAR 7X

SVS CAPTAIN MORGAN 11Z

DAM: RF CERTAINLY FLIRTIN 525C  
RF CERTAINLY FLIRTIN 202Z

LOT 83



LOT 83

MADER **UNSTOPPABLE** 930K

29 June 2022 • MDR 930K • BPTG1437763

Homo Polled, Hetero Black

	EPDs										Carcass EPDs		
	CE	BW	WW	YW	Milk	MCE	MWW	API	TI	CWT	REA	Fat	Marb
EPD	8.4	2.4	85.7	137.2	22.6	3.0	65.5	115.41	78.08	32.3	0.90	-0.09	-0.07
Breed Rank	45	30	20	10	70	70	45	35	15	25	45	70	55

BW	205 Wt.	Jan 7 Wt.	WPDA
85	829	1700	3.05

CE



-Maybe my favorite of the three full brothers, this guy puts in all together in a real complete package

-You admire his athletic ability, his added thickness and dimension, and his eye appeal and style

-A full sibling last year sold to Hays Land and Cattle for \$10,500

-From his superior pedigree to his great physical attributes, he has the breeding pieces to really make an impact on any herd

84

NGDB STRUCTURE 34D

SIRE: RF SHAKEDOWN 074H  
IPU MS. COWBOY CUT 135D

LFE THE RIDDLER 323B

DAM: MADER BLACKGOLD 510F  
MADER BLACKGOLD 80B

SIRE OF LOT 84



MATERNAL BROTHER OF LOT 84

MADER **GO TIME** 904K

14 June 2022 • MDR 904K • BPG1437632

Homo Polled, Homo Black

	EPDs										Carcass EPDs		
	CE	BW	WW	YW	Milk	MCE	MWW	API	TI	CWT	REA	Fat	Marb
EPD	2.1	7.6	108.4	158.2	20.9	1.3	75.1	120.71	87.08	36.6	0.83	-0.08	0.11
Breed Rank	95	100	1	1	80	90	10	20	2	15	65	95	10

BW	205 Wt.	Jan 7 Wt.	WPDA
86	784	1830	3.20

CE



-This would be the highest performing bull on test in the long yearling division

-A 784lb WW which is superior for the management and weaning system on these summer born bulls and being the heaviest bull on test

-He rank in the top 1% for WW and YW, this herdbull will add extra weight to his offspring

-His dam milks heavy, and her last bull sold through this ring to Stahlville Farming for \$9000



85

TJSC BOONE PICKENS 46C

SIRE: MADER SON OF ANARCHY 144H  
LFE BS SHEILA 82A

SPRINGCREEK OLYMPIAN 66A

DAM: MADER GODDESS 77D

MADER MAKE IT RAIN 124A



MATERNAL BROTHER OF LOT 85



MATERNAL GRANDDAM

MADER **TICK TICK BOOM** 933K

30 June 2022 • MDR 933K • BPG1437644

Homo Polled, Homo Black

	EPDs										Carcass EPDs		
	CE	BW	WW	YW	Milk	MCE	MWW	API	TI	CWT	REA	Fat	Marb
EPD	8.5	2.8	77.4	110.4	19.3	3.2	58.0	107.03	68.95	20.1	0.90	-0.09	-0.17
Breed Rank	45	35	50	55	90	65	85	65	65	75	45	75	90

	BW	205 Wt.	Jan 7 Wt.	WPDA
	86	814	1770	3.18

CE



- Another powerhouse of a bull, exemplifying added muscle definition, extra rib shape, and lots of maturity
- His dam has always had the ability to milk heavy and wean off one of the biggest calf
- The combination of Son of Anarchy and Olympian, allow this bull to offer some calving ease while still maintaining real strong performance
- These blaze face calves are in hot demand, allow this guy to add some chrome to your calves

86

TJSC BOONE PICKENS 46C

SIRE: MADER SON OF ANARCHY 144H  
LFE BS SHEILA 82A

LFE HEAVY HITTER 352C

DAM: MADER OPAL 91F

MADER OPAL 28C



SIRE OF LOT 85 - 86



MATERNAL GRANDSIRE

MADER **MONEY HONEY** 902K

10 June 2022 • MDR 902K • BPG1437631

	EPDs										Carcass EPDs		
	CE	BW	WW	YW	Milk	MCE	MWW	API	TI	CWT	REA	Fat	Marb
EPD	9.1	2.7	83.5	124.2	17.0	3.3	58.8	110.41	72.32	30.9	0.86	-0.08	-0.18
Breed Rank	35	35	25	25	100	65	80	55	45	30	55	80	90

	BW	205 Wt.	Jan 7 Wt.	WPDA
	78	709	1600	2.78

CE



- Another growth driven bull that excels for body capacity, good length of spine, and early maturity
- His dam is a terrific looking female, having great udder quality, a great foot, and is very easy fleshing and easy to maintain
- Our Heavy Hitter females are among our favorite cows, expressing a lot of raw power, have big pelvic areas, and milk heavy
- This bull is mild mannered, and will give you a quick return on investment



87

TJSC BOONE PICKENS 46C

SIRE: MADER SON OF ANARCHY 144H  
LFE BS SHEILA 82A

MADER WALK THIS WAY 224B

DAM: MADER TRANCE 58F

MADER TRANCE 242C



MATERNAL BROTHER OF LOT 87



PATERNAL GRANDSIRE

# MADER RIGHT ROUND 940K

4 July 2022 • MDR 940K • BPG1437647

Homo Polled, Homo Black

	EPDs										Carcass EPDs		
	CE	BW	WW	YW	Milk	MCE	MWW	API	TI	CWT	REA	Fat	Marb
EPD	8.9	1.7	81.2	120.4	20.5	5.4	61.1	117.60	74.35	22.9	0.89	-0.09	-0.11
Breed Rank	40	20	35	35	85	35	70	30	30	65	50	75	70

BW	205 Wt.	Jan 7 Wt.	WPDA
88	702	1605	2.91

CE  
☆☆

-A strong blaze face bull who is as stout and massive as any other in the pen  
 -This bull travels very freely, is wide in his pins and has great width from behind, he is soft middled, and just really balanced and eye appealing  
 -We love our Walk This Way females, and Trance 58F ranks at the top in terms of production and desired characteristics  
 -The Son of Anarchy progeny are real impressive, born with light birthweights and really have the ability to get up and grow

88

TJSC BOONE PICKENS 46C

SIRE: MADER SON OF ANARCHY 144H  
LFE BS SHEILA 82A

LFE HEAVY HITTER 352C

DAM: MADER OPAL 55E

MADER BLACK OPAL 1Y



MATERNAL BROTHER OF LOT 88



MATERNAL BROTHER OF LOT 88

# MADER JESSE JAMES 959K

3 August 2022 • MDR 959K • BPG1437655

Homo Polled, Homo Black

	EPDs										Carcass EPDs		
	CE	BW	WW	YW	Milk	MCE	MWW	API	TI	CWT	REA	Fat	Marb
EPD	6.9	3.8	86.0	127.5	14.8	2.9	57.8	106.93	72.67	28.6	0.88	-0.09	-0.15
Breed Rank	60	55	20	20	100	70	85	65	40	40	50	80	85

BW	205 Wt.	Jan 7 Wt.	WPDA
90	703	1420	2.72

CE  
☆☆

-A unique white stripe around this bulls snout, offering really good thickness, width of top, and balance  
 -A maternal brother sold last year to Journey's End for \$7000  
 -Note the Opal cow family on the bottom side, a cow family that excels for udder and foot quality, longevity, and milking ability  
 -Utilize a bull like this to cover more cows and maintain body condition



89

TJSC BOONE PICKENS 46C

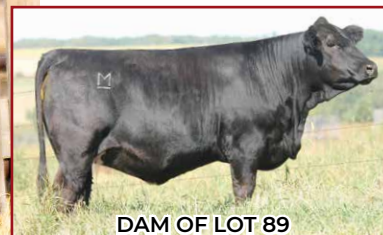
SIRE: MADER SON OF ANARCHY 144H

LFE BS SHEILA 82A

LFE HEAVY HITTER 352C

DAM: MADER OPAL 65G

MADER OPAL 210B



DAM OF LOT 89



MATERNAL BROTHER OF LOT 89

# MADER DETENTION 918K

20 June 2022 • MDR 918K • BPG1437634

Homo Polled, Homo Black

	EPDs										Carcass EPDs		
	CE	BW	WW	YW	Milk	MCE	MWW	API	TI	CWT	REA	Fat	Marb
EPD	7.0	3.3	89.8	133.4	17.1	2.5	62.0	107.99	75.09	35.2	0.94	-0.08	-0.18
Breed Rank	60	45	10	15	100	75	65	60	25	20	35	80	90

	BW	205 Wt.	Jan 7 Wt.	WPDA
	86	668	1565	2.77

CE



-A maternal brother sold last year to Sengaus Bros last year for \$8500

-His big bodied, massive barreled dam stems from the multi time proven "Opal" cow family

-This bull has that added chrome to him, is bold through his rib, and stout made throughout

-Picture a whole pen of black blaze face steer calves out of this big time sire

90

TJSC BOONE PICKENS 46C

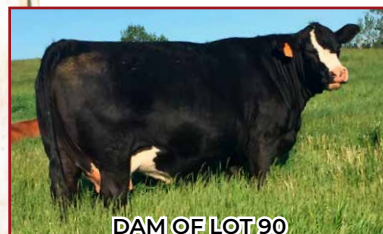
SIRE: MADER SON OF ANARCHY 144H

LFE BS SHEILA 82A

R PLUS BLACKOUT

DAM: TRI-R MS BLACK TESLA 21Y

TRI-R TESLA 36T



DAM OF LOT 90



MATERNAL BROTHER OF LOT 90

# MADER FIREWORK 921K

21 June 2022 • MDR 921K • BPG1437635

Homo Polled, Homo Black

	EPDs										Carcass EPDs		
	CE	BW	WW	YW	Milk	MCE	MWW	API	TI	CWT	REA	Fat	Marb
EPD	7.9	3.8	84.2	126.0	21.8	2.9	63.9	113.33	72.47	28.5	0.79	-0.09	-0.15
Breed Rank	50	55	25	20	75	70	55	45	40	40	75	65	85

	BW	205 Wt.	Jan 7 Wt.	WPDA
	84	723	1545	2.74

CE



-A very smooth made bull all the way through, with his small skull, sleek shoulder, and lighter bone structure

-I believe this bull is going to be an easy calver, and could be utilized on bigger heifers or first or second calvers without hesitation

-This bull should add stretch and frame to his offspring, while increasing weaning weights and grow



# 91

TJSC BOONE PICKENS 46C

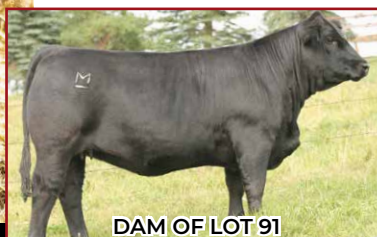
**SIRE:** MADER SON OF ANARCHY 144H  
LFE BS SHEILA 82A

LFE HEAVY HITTER 352C

**DAM:** MADER BLACKGOLD 60F  
MADER BLACKGOLD 139A



MATERNAL BROTHER OF LOT 91



DAM OF LOT 91

## MADER BREWSTER 916K

19 June 2022 • MDR 916K • BPG1437633

**Homo Polled, Homo Black**

	EPDs										Carcass EPDs		
	CE	BW	WW	YW	Milk	MCE	MWW	API	TI	CWT	REA	Fat	Marb
EPD	8.6	1.9	68.4	104.2	14.0	3.9	48.2	108.46	65.17	19.1	0.83	-0.08	-0.14
Breed Rank	45	20	85	70	100	55	100	60	90	80	65	90	80

BW	205 Wt.	Jan 7 Wt.	WPDA
82	620	1380	2.43

**CE**



-A low birthweight of 82lbs and built like a heifer bull  
-This bull is narrow fronted, shows good rib shape and volume, all while maintaining good muscle expression  
-He has that great blaze face that will add some color to his offspring, and is backed by a moderate, but tanky dam  
-Son of Anarchy has been our go to calving ease sire for two years straight, and his sons should follow his footsteps

# 92

TJSC BOONE PICKENS 46C

**SIRE:** MADER SON OF ANARCHY 144H  
LFE BS SHEILA 82A

LFE HEAVY HITTER 352C

**DAM:** MADER OPAL 120E  
MADER OPAL 124Z



MATERNAL GRANDSIRE



PATERNAL GRANDSIRE

## MADER 2ND WIND 922K

22 June 2022 • MDR 922K • BPG1437636

**Homo Polled, Hetero Black**

	EPDs										Carcass EPDs		
	CE	BW	WW	YW	Milk	MCE	MWW	API	TI	CWT	REA	Fat	Marb
EPD	9.7	2.0	78.1	114.6	17.4	5.1	56.5	113.81	71.80	25.2	0.87	-0.08	-0.11
Breed Rank	30	25	45	45	95	40	90	40	45	55	55	85	70

BW	205 Wt.	Jan 7 Wt.	WPDA
82	644	1400	2.48

**CE**



-Another great calving ease prospect, with just an 82lb BW, and ranking in the top 30% for CE and BW EPD's  
His red Heavy Hitter dam carries lots of volume and depth of body, and has a big strong, dark foot  
-Rest easy calving out heifers to these Son of Anarchy sons, they are vigorous at birth, and up sucking in no time



# 93

TJSC BOONE PICKENS 46C

**SIRE:** MADER SON OF ANARCHY 144H  
LFE BS SHEILA 82A

LFE BS LEWIS 322U

**DAM:** MADER OPAL 207C

CG BLACK OPAL 652S



LOT 93



MATERNAL BROTHER OF LOT 93

## MADER LOCOMOTIVE 957K

28 July 2022 • MDR 957K • BPG1437654

**Homo Polled, Homo Black**

	EPDs										Carcass EPDs		
	CE	BW	WW	YW	Milk	MCE	MWW	API	TI	CWT	REA	Fat	Marb
EPD	8.3	2.4	74.3	105.0	19.1	1.8	56.3	111.84	68.52	22.6	0.80	-0.09	-0.11
Breed Rank	45	30	65	70	90	85	90	50	70	65	75	80	70

BW	205 Wt.	Jan 7 Wt.	WPDA
85	675	1400	2.65

**CE**



-A personal favorite on the black calving ease bulls, and a lot of it has to do with the quality of his dam  
-Like all Opal's, she is superb uddered, has a great foot, feminine made, and maintains great body score and easy fleshing ability  
-He is small headed, smooth over that shoulder, light boned, yet still exemplifies a great muscle pattern, and body capacity  
-You will want to retain daughters out of this young stud

# 94

TJSC BOONE PICKENS 46C

**SIRE:** MADER SON OF ANARCHY 144H  
LFE BS SHEILA 82A

WHEATLAND BULL 680S

**DAM:** MADER OPAL 231G

MADER BLACK OPAL 1Y



MATERNAL GRANDDAM



MATERNAL GRANDSIRE

## MADER CRASH 900K

4 June 2022 • MDR 900K • BPG1445524

**Homo Polled, Homo Black**

	EPDs										Carcass EPDs		
	CE	BW	WW	YW	Milk	MCE	MWW	API	TI	CWT	REA	Fat	Marb
EPD	8.5	2.5	78.7	118.7	20.6	2.2	60.0	113.85	71.38	26.2	1.01	-0.09	-0.14
Breed Rank	45	30	45	35	85	80	75	40	50	50	20	80	80

BW	205 Wt.	Jan 7 Wt.	WPDA
70	646	1400	2.41

**CE**



-A moderate set bull that is destined to be in the heifer pen  
-This bull has a lot of raw thickness, he's stout over that top, and muscular from behind  
-His Opal dam is tidy uddered with small teats, and if you analyze this bulls pedigree you will note the strong maternal background he has with greats such as LFE Sheila 82A, Wheatland Lady 351N, and Opal 652S



# 95

TJSC BOONE PICKENS 46C

**SIRE:** MADER SON OF ANARCHY 144H  
LFE BS SHEILA 82A

FBFI COMBUSTIBLE

**DAM:** MADER SUGAR SUGAR 56C  
MADER P IRON SUGAR 7X



DAM OF LOT 95



MATERNAL BROTHER OF LOT 95

## MADER STRONGHOLD 929K

26 June 2022 • MDR 929K • BPG1437641

**Homo Polled, Homo Black**

	EPDs										Carcass EPDs		
	CE	BW	WW	YW	Milk	MCE	MWW	API	TI	CWT	REA	Fat	Marb
EPD	10.0	2.1	80.0	120.8	20.1	5.3	60.1	115.05	71.43	21.2	0.89	-0.08	-0.19
Breed Rank	30	25	40	30	85	35	75	35	50	70	50	85	95

BW	205 Wt.	Jan 7 Wt.	WPDA
86	681	1600	2.86

**CE**



-Big strong bull here with added length, frame, and pushes down the scale  
-The Sugar Sugar 56C cow has been very influential in raising high quality offspring, and her most recent son was the heavy weight at weaning just a few days ago  
-The combination of the \$50,000 Son of Anarchy bull and the FBFI Combustible bull, create this bull who shows lots of eye appeal and style, calving ease as a forefront, and structural correctness

# 96

TJSC BOONE PICKENS 46C

**SIRE:** MADER SON OF ANARCHY 144H  
LFE BS SHEILA 82A

SS EBONYS INTUITION 802

**DAM:** MADER OPAL 126Z  
CG BLACK OPAL 652S



MATERNAL BROTHER OF LOT 96



MATERNAL SISTER OF LOT 96

## MADER DESIGNATED 925K

24 June 2022 • MDR 925K • BPG1437638

**Homo Polled, Homo Black**

	EPDs										Carcass EPDs		
	CE	BW	WW	YW	Milk	MCE	MWW	API	TI	CWT	REA	Fat	Marb
EPD	11.0	1.9	77.7	110.9	21.8	5.6	60.7	122.78	72.66	27.4	0.90	-0.09	-0.09
Breed Rank	20	20	50	55	75	30	75	20	40	45	45	80	65

BW	205 Wt.	Jan 7 Wt.	WPDA
81	661	1500	2.67

**CE**



-I get repetitive as I talk about the great "Opal" cow family, but as you can see going through this catalogue, she has had a HUGE influence on our black herd of cows  
-His dam is among the favorite Opal daughters, with great udder suspension and teat size, loads of body capacity, and is so fluid in her movement  
-This big strong individual has a low BW and ranks in the top 25% for CE and BW  
-Rest easy at night knowing you have a long yearling bull that can breed more numbers, and calve unassisted progeny  
-This bull is more standoffish with others, seems to want to keep his distance when singled out, give him space and he will be fine.



# 2023 BUYERS

Broadview Ranch Ltd  
Heistead Ranch  
Landon Scheiske  
Logan Young  
Morgan Mackenzie  
Murphy Farming Company  
Sengaus Bros.  
Wiest 5 Farms  
Wild T Farms  
William Tindal  
Wolf Creek Colony  
Parkland Colony  
Pleasant Valley Colony  
Stahlville Farming  
Verdant Valley Farming  
Waterton Colony  
Wolf Creek Colony  
Y2 Cattle Co  
Southpaw Cattle Co.  
Bar CL Farm& 2K Springs  
Klaudt Ranches  
Double RN Ranching  
Ruzicka Farms - Sara Jane  
Allan Skretting  
Ashworth Farm & Ranch Ltd  
Bar 17 Little Valley Livestock  
Bignell Cattle Co  
Blue Ridge Colony  
Brian Knight  
Brice Medin  
CC Farming

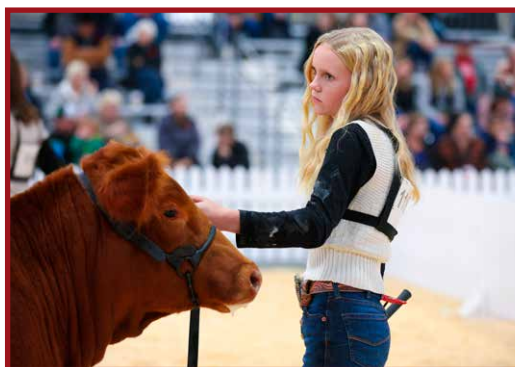
Rockin' G Ranch  
Chris Hannas  
Corey Campbell  
Dakota Beazer  
Campstool Cattle Co  
Lankirk Farms Ltd  
Doug & Carol Fletcher  
Downhill Simmentals  
EK Cattle Co  
Ferme Christel  
Fletcher Land & Cattle Ltd  
Doug & Angie Fretz  
Gale Cattle Co  
Gord Lesson  
Hays Land & Cattle  
Horner Cattle Co  
Les Isaac  
Jensen Simmentals  
Johnson Farm Simmentals  
Kamlah Farms  
Kampen Cattle Co.  
KCH Cattle Co  
Keith Heppler  
Beniuk Farms  
Lindy Kroetsch  
Westhill Ranch Simmentals  
Mike LeBlanc  
P Dirks Cattle Company Ltd  
Lane Parsons  
Parkland Farming  
Perkin Land & Cattle

Pieschel Farms  
Praeker AG Ltd  
Jon Rairdan  
Richard Steed  
Riley Ranch  
RJS Land & Cattle Co Inc.  
Rob Tindal  
Rocking WC  
Rockport Colony  
Sande Cattle Co.  
Sather Simmentals  
Sharples Ranch  
Shawn Schick  
Silver Spring Stables  
Starland Farming  
Darren Stoneman  
Tandem T Farms  
Trout Creek Cattle Co  
W Sunrise Ranch  
Waterton Colony  
Horner Cattle Co.  
Harvie Crest Cattle Co.  
TC Tara Simmentals  
Cobb Farms  
Havencrest Farms





# JUST RANCHIN'...





# KIDS AND COWS...







Dr. Waylon Wise

1626 Railway Street  
Box 288  
Crossfield, AB  
T0M 0S0

Office: (403)946-4567  
Cell: (403)369-8823  
Fax: (403)946-5529  
drwwise@gmail.com



Office: 403-335-8042  
Niall: 403-507-3432  
Grant: 403-994-1662

Site 16 Box 18 RR1  
Didsbury, AB  
T0M 0W0

nrichmondrepairs@gmail.com  
www.richmondequipment.ca

## Israelson Forage Inc.

Chris Israelson  
Box 231  
Didsbury, AB  
T0M 0W0  
403.994.0561

### Brittany McAllister

Relationship Manager  
ATB Business Banking

Mobile 403-875-1200  
bmcallister@atb.com

4962 50 Street  
Innisfail, AB T4G 1S7

### Brandi-Rae Mandel

Account Officer  
Office 587-219-0254  
bmandel@atb.com

atb.com

Scott Dickson, CA  
DIRECTOR  
LIVESTOCK SERVICES

DIRECT 403.356.1250  
PH. 403.346.8878  
FAX 403.341.5599  
TOLL FREE 1.877.500.0779

4922 - 53 St.  
Red Deer, AB  
T4N 2E9  
scott.dickson@mntp.ca  
mntp.ca



Member of Praxity, aisa  
Global Alliance of Independent Firms



## KODIAK BBQ

Tom Jackson  
403.638.7321

## CASUAL LABOUR INC.

LINDSEY STECYK

403.850.8654

Box 412  
Crossfield, AB T0M 0S0

Specializing in Farm  
Buildings

lindseystecyk@gmail.com



DAN KEMMERE 403-994-2222  
TYSON GARDNER 403-586-1598  
TYKEMELECTRIC@GMAIL.COM

**TYKEM**  
ELECTRIC LTD.

RESIDENTIAL COMMERCIAL INDUSTRIAL MAINTENANCE



**Kyle O'Neill**  
Sales Representative

T. +1 403 556 3395 F. +1 403 556 8660  
C. +1 403 586 0804  
kyle.o'neill@hiprofeeds.com

5902 - 48th Ave, Olds, Alberta  
www.trouwnutrition.ca | www.hiprofeeds.com

Dale Schaeffer  
President  
dale@westernlitho.ca  
Direct: 306.546.7430  
Cell: 306.537.5664



Bus: 306.525.8796  
or 1.877.475.4846  
Fax: 306.565.2525  
www.westernlitho.ca

300 Dewdney Avenue  
Regina, SK S4N 0E8

## Davis-Rairdan

P.O. Box 590  
Crossfield, Alberta  
Canada T0M 0S0  
Phone (403)946-4551  
Fax (403)946-5093

Website  
davis-rairdan.com  
email  
embryos@davis-rairdan.com



Tanya Van Otterloo

Relationship Manager  
Directrice des relations d'affaires

C 403-415-6217 T 403-556-8177 tanya.vanotterloo@fcc-fac.ca  
350-6900 46th Street Olds AB T4H 0A2  
Customer Service Centre / Centre de service à la clientèle 1-888-332-3301





# TERMS & CONDITIONS

**TERMS:** The terms of the sale are cash or cheque payable at par. Settlement to be made immediately after the completion of the sale. The right of property shall not pass until after settlement is made. All settlements must be made with the clerk of the sale before any cattle will be released. All monies are in Canadian funds.

**BIDS:** Every animal entering the sale ring will be sold to the highest bidder.

**DISPUTES:** In cases of disputes, bidding will be reopened between the parties involved. If no further bid is made, the buyer will be the person from whom the auctioneer accepted the last bid. The auctioneer's decision is final.

**ANNOUNCEMENTS:** All announcements made from the auction block will take precedence over the printed matter in the catalogue. Buyers are therefore cautioned to pay close attention to any such announcements.

**INSURANCE:** Will be available sale day. Animals become the property of the buyer as soon as sold. Bulls to be wintered must be insured.

**SHIPPING:** Assistance will be given in arranging trucking after the sale but no risk is assumed by the Auctioneer or Seller. Expenses incurred are the responsibility of the purchaser. Purchasers are requested to furnish shipping instructions when making settlement. If you need assistance please contact the seller.

**CERTIFICATE OF REGISTRY:** Registration or recordation papers will be transferred to the new owner if requested at time of payment. Cattle will not be transferred until paid for in full.

**SEMEN RESERVE:** The seller reserves the right to draw semen on any bull in the sale for in herd use only at the cost of the seller and prior to delivery.

**ACCIDENTS:** Although every precaution will be taken to protect the safety and comfort of buyers, neither the sale manager, nor the auctioneer assume any responsibility in this matter and disclaim any liability, legal or otherwise, in the event of accident or loss of property.

**LIABILITIES:** All persons attending the sale do so at their own risk and sellers assume no liability, legal, or otherwise, for any accidents occurring in or about the premises.

**EXPORT TESTING:** Required health certificates for cattle being exported will be provided.

**BREEDING GUARANTEE:** All animals are guaranteed to be satisfactory breeders in accordance with the respective breed association bylaws. No guarantee is given a bull's semen will freeze. Any female that is subject to embryo transplant shall cause this guarantee to be null and void. Guarantee does not apply to animals who after the sale are not properly handled and cared for, or injured or sick. They cannot be returned to us if not in a sound, healthy condition. At no time shall the seller's liability exceed the purchased price of the animal.

**RIGHTS & OBLIGATIONS:** The above terms & conditions of the sale shall constitute a contract between the buyer & seller & be equally binding to both. Resale of animals following purchase in this sale shall constitute a separate transaction & the rights & obligations of the two parties connected thereto are not covered by the terms & conditions of this sale. In the event of default on any part of the terms & conditions covering this sale by either the buyer or the seller, it shall be the responsibility of the buyer or the seller to investigate any action necessary to bring about a fair settlement of any claims arising from this sale and to be responsible for any & all costs involved therein.





Request Return To:  
Box 1 Site 12 RR2  
Carstairs, AB T0M 0N0

Time Sensitive Material

M

