



# CITY VIEW SIMMENTALS & **ABOUND LIVESTOCK**

*With Guests Gold-Bar Livestock*

**14<sup>th</sup>** *New Location*  
TUESDAY, MARCH 19, 2024, Sale Time 1 pm  
CITY VIEW SIMMENTALS, Moose Jaw, SK

## ANNUAL BULL SALE

## City View Simmentals and Abound Livestock

# 14TH ANNUAL BULL SALE

With Guests Gold-Bar Livestock

Tuesday, March 19, 2024, Sale Time: 1PM CST

**New Sale Location** : City View Simmentals  
Moose Jaw, Saskatchewan

**Monday 5:00 p.m.**

Refreshments and Pizza sponsored by TD Bank

**Tuesday Morning**

Coffee & donuts sponsored by the Moose Jaw Co-op

**Tuesday Lunch at 12:00 p.m.**

Lunch is sponsored by FCC

**Sale at 1:00 p.m.**



### FIND US ON GOOGLE MAPS OR :

- from the Trans-Canada, turn south at JGL Livestock
- travel 4 miles south to highway 363 and turn west
- follow highway 363 approximately 13 miles around 2 speed curves
- look for the blue barns on the south side of the highway

### WATCH AND BID ONLINE

## Internet Bidding Available



For more information call:

Onsite Rep Sarah Hasson 306-681-5340

Purebred Team Support 780-991-3025 or Mark Shologan 780-699-5082

## SALE DAY PHONES

Blaine Barnett.....	306-631-6618
Brian Barnett.....	306-631-7539
Joe Barnett.....	403-465-2805
Tina Barnett.....	306-631-5183
Lisa Martin.....	306-684-5884
Aaron Birch.....	403-485-5518
Sarah Hasson.....	306-681-5340

## SALE STAFF

Auctioneer, Don Oberg.....	780-678-6926 (cell)
Ringman, Nate Marin.....	306-869-7130 (cell)
Ringman, Cody Haney.....	403-845-8806 (cell)
DLMS, Sarah Hasson.....	306-681-5340 (cell)



## VIDEOS OF THE BULLS

Videos of the bulls may be viewed  
online at [cattlevids.ca](http://cattlevids.ca)

**FERTILITY** All bulls will be semen tested prior to the sale.

**IN-HERD SEMEN** We reserve the right to collect semen on any bull in the offering at our expense and your convenience.

**PHONE BIDS/SIGHT UNSEEN** We hope you can visit the farm before the sale to make your selection. If you can't make it, give us a call to discuss what you're looking for. If we have talked before, your satisfaction is guaranteed. Online bidding and videos will be available on [dlms.com](http://dlms.com)

**GUARANTEE** All bulls sell under the terms and conditions of sale as recommended by the Canadian Simmental and Angus Associations.

**INSURANCE** We strongly recommend insuring your purchases sale day. See Larry Toner of Stockman's Insurance at the sale. 306-834-7652

**DELIVERY** Bring your trailer sale day and we'll deduct \$100.00 per bull from the purchase price or bulls can return to the farm until April 15. Bulls will be delivered free of charge up to 300 km from Moose Jaw at the seller's convenience as soon as possible following the sale.

Other destinations can be arranged between the buyer and seller.

Buyers are encouraged to insure their purchases. ***Give us a call if you have any questions. We always do our best to work with you within reason.***

**TERMS AND CONDITIONS** The terms of the sale are cash or cheque. All settlements must be made with the clerk following the sale before any cattle will be released.

**DISPUTES** Bidding will be re-opened between the parties involved in the dispute. If no further bids are made, the buyer will be the person from whom the auctioneer accepted the last bid. The auctioneer's decision on all disputes will be final.

**ANNOUNCEMENTS** All announcements made from the auction block will take precedence over the printed material matter in the catalog. Buyers are therefore cautioned to pay attention to such disclosures.

**ACCIDENTS** Although every precaution will be taken to protect the safety and comfort of the buyers, neither the owner, the auctioneer of Association assumes any responsibility in this matter and disclaims any liability, legal or otherwise, in the event of accident or loss of property.

Welcome to the City View Simmentals & Abound Livestock 14th Annual Bull Sale with guest consignors, Gold-Bar Livestock. This annual event stands as a testament to their commitment to providing you with the very best in Simmental and Angus genetics. These families are dedicated to the agriculture industry and take a lot of pride in offering the best stock possible.



City View Simmentals goes the extra mile in presenting a stellar set of Simmental bulls. Powerfully made and meticulously selected, these bulls represent the epitome of top genetics sourced from both the purebred and fullblood sectors. Abound Livestock and Gold-Bar Livestock add a group of elite Angus bulls that have annually brought back a loyal clientele. These bulls are not just bred; they are maternally stacked with sought-after genetics from the pinnacle of the breed. All three breeders are well known in the industry for quality stock and here is a chance to acquire their best that they have put forth.

Whether you have specific questions, require additional information, or wish to discuss your needs, the breeders stand ready to assist. Alternatively, connect with us at Bohrson Marketing Services; Nate Marin and Cody Haney, familiar with these exceptional programs, will be in attendance and are honored to represent your buying needs. Mark your calendars for a day that promises not only a showcase of outstanding genetics but also an opportunity to elevate your herd. Join us in Moose Jaw, SK, on March 19th, for the City View Simmentals & Abound Livestock 14th Annual Bull Sale—a celebration of breeding excellence and your gateway to securing the very best genetics for your herd.

Best regards,

*The Bohrson Marketing Team*

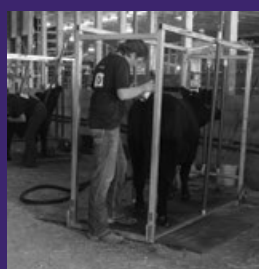
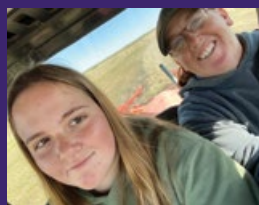
# Thank You! TO OUR 2023 BUYERS

ROY SMITH,SK  
JOHN HOWE, SK  
K G MCLAREN FARMS LTD, SK  
DART SIMMENTALS,AB  
HIGH RISE FARMS LTD, SK  
ANGELA & JEFF CHUBBE,SK  
TISZAUER FARMS LTD, SK  
CHURCHHILL LAND & CATTLE CO. ,SK  
RYAN BULL,SK  
TWIN VIEW LIVESTOCK, SK  
KEN LOOS , SK  
ROY & PAM KIRBY,SK  
CLIFF BARNETT, SK

RANDY & JANICE STEVENS, SK  
BACK 40 RANCH LTD, SK  
CONRAD BERG, SK  
AUTUMN DEW LAND & CATTLE, SK  
BAINTREE ANGUS, AB  
TIN CATTLE CO., AB  
DEER HILL RIDGE ANGUS FARM,SK  
CF CATTLE,SK  
JAMIE COCKBURN, SK  
TREVOR BENSON & BONNIE BRANDT, SK  
JARON & BRIAN ARGUIN, SK  
SPRINGWATER RANCH LTD, SK  
JESSE HIPPERT,SK

RICK & BONNIE CLUBBE,SK  
MAPLE POINT RANCH,SK  
FIVE M CATTLE CO/HEYSON FARMS,SK  
HAWKINS BROS LAND & CATTLE,SK  
OH-KAY FARMS,AB  
HOEGL LIVESTOCK / QUINN HOEGL, SK  
WILLOWDALE SIMMENTALS,AB  
ROLLING JN FARMS, AB  
BLACKWELL CATTLE CO,SK  
DWAYNE PATTERSON, SK  
HARDY LETAIN,SK  
KNOX LAND & LIVESTOCK,SK  
PHEASANTDALE CATTLE CO, SK





On behalf of all of us at City View I'd like to welcome you to our 14th Annual Bull Sale. We are excited to fulfill a lifelong dream by moving the sale home. It'll be a video sale this year with all the bulls penned right outside our newly updated sale barn for viewing. We felt it was time to simplify things and keep the bulls comfortable in their own surroundings here at home. Thank you to Scott and the team at Johnstone's Auction Mart for welcoming us for the past 13 years.

Even after five years of drought and substandard water quality, the group of bulls we have assembled this year is as strong as we have ever produced. We are proud to use some of the most popular sires in the breed like Mountain View and Walk The Line as well as some of our own bulls like Jynx. We feel this is a very consistent and uniform pen of reds, blacks and fullbloods. Our bulls sell very affordably with over 88% selling to repeat customers in 2023.

The bulls are once again housed in their large two-acre pen with lots of room to move around and a feeder full of alfalfa/brome hay. We pail feed a 14% bull developer ration from Trouw Nutrition along with a top dress of brown oats. Jessica Hextall with Trouw goes above and beyond with her customer support! None of the bulls have had their feet trimmed, what you see is what you get, and to be honest we're pretty proud of what we see! You be the judge! They have been developed on the Zoetis Vaccine program and have had Ivomec pour on and Clean Up II.

We will continue to manage the sale on our own as we have for the past 13 years. We are excited to provide you with third party options to help in your selection. We welcome our new auctioneer, Don Oberg, to conduct the sale as well as the Bohrsen Marketing team. Nate and Cody are at your disposal if you need an opinion or representation on your purchase. They have been through the bulls and their expertise and professionalism is second to none.

Sunnyside Simmentals have decided it's time to step back from the purebred industry after decades in the business. We'll miss having Tom and Sharon with us along with the advice and mentorship they've shared over the years. Thank you! We're excited that Abound Livestock and Gold Bar Livestock will have a strong set of Black Angus bulls for your appraisal at the sale again this year.

We once again had a very enjoyable, successful fall exhibiting at Manitoba Ag Ex, Edmonton's Farm Fair and Agribition. We exhibited City View Ice Man 30L alongside his five-year-old dam, Outlaw Mistress 830F. The pair created a lot of excitement in the stall and was crowned Senior Champion Female at Agribition. We also exhibited four heifer calves we are very proud of. Thanks to everyone who helped us at the shows and our good neighbor, Jesse and of course Brody for looking after everything at home. It was a great fall catching up with other breeders and commercial producers across western Canada.

We welcome you to stop by the farm any time prior to the sale to view our program. The bulls will be penned beside the sale barn the day before the sale and we'll have pizza and refreshments at 5pm on Monday. Lunch will be served at 11:30 Tuesday morning prior to the sale at 1 pm. The catalog can be viewed at [www.bohrson.com](http://www.bohrson.com) and we hope you follow us on Facebook for updates. Come out and take a look, I'm sure you'll be impressed! See you SALE DAY!!

Blaine

*The Barnetts  
Blaine and Tina, Brody & Addison*

1

**CITYVIEW VIKING 79L**

CA-PT1426310 / CVBB 79L / Homo Polled / Fullblood / 26-Jan-23

DOUBLE BAR D MAESTRO 100S

Act BW: 96 ET

ANCHOR D VIPER 103W

Adj WW: 691

PRL LOPEZ 147L

Adj YW: 1293

FGAF FRENCH ATTACK 010C

IPU 29B MS FRENCH ATTACK 44F

LAKEVIEW MS ECLEC 29B PFF

CE 3.8

BW 2.1

WW 68.5

YW 89.8

Milk 33.9

MCE 0.5



Dam of Lots 1 &amp; 2



Sire of Lot 1



LOT 1

- A homo polled, non-diluter, full fleck bull with dark red double goggles and a great disposition
- His young dam already has 11 registered progeny including lot 2 and six other sons through this sale, two daughters in our herd and another to Labatte Simmentals
- He has a very consistent and widely respected pedigree

2

**CITYVIEW MAGNUM 51L**

CA-PT1426316 / CVBB 51L / Polled / Fullblood / 20-Jan-23

ANCHOR D VIPER 103W

Act BW: 99 ET

CITYVIEW GOLD TRIGGER 76H

Adj WW: 689

ANCHOR D / CD KALISTA 263F

Adj YW: 1227

FGAF FRENCH ATTACK 010C

IPU 29B MS FRENCH ATTACK 44F

LAKEVIEW MS ECLEC 29B PFF

CE 7.6

BW 1.6

WW 63.6

YW 84.1

Milk 33.8

MCE 2.5



Sister of Lots 1 &amp; 2



Sire of Lots 2 &amp; 3



LOT 2

- A double goggled, polled, non-diluter who had a full brother sell to 5M Cattle in 2023, he is the natural calf out of the 44F donor
- He is a son of our high selling Gold Trigger who has done great things for Boisvert Simmentals in Quebec
- We are really excited about the Gold Trigger daughters we have kept in herd

3

**CITYVIEW SILVER BULLET 11L**

CA-P1424692 / CVBB 11L / Polled / Fullblood / 4-Jan-23

ANCHOR D VIPER 103W

Act BW: 85

CITYVIEW GOLD TRIGGER 76H

Adj WW: 622

ANCHOR D / CD KALISTA 263F

Adj YW: 1075

STARWEST POL BLUEPRINT

CITY VIEW ADDIE 58F

KINDRED SPIRIT ADDIE 55A

CE 15.5

BW 0.2

WW 63.5

YW 84.7

Milk 36.1

MCE 10.6



Granddam of Lot 3



Grandsire of Lot 3



LOT 3

- A Gold Trigger son out of Blueprint cow, he could work well in the heifer pen
- He ranks in the top 2% for calving ease and top 10% for birth weight with just a mid eighties actual birth weight
- We have two maternal sisters including one who raised lot 24 and a maternal brother sold to Trevor Benson & Bonnie Brandt



Mountain View was the popular pen leader from the Westway program a couple years ago and we were glad we had the opportunity to incorporate him through AI. They come easy, have plenty of style and ability to perform. We're looking forward to keeping his daughters in the herd and sure like what this first group of sons bring to the table.

RS

**WFL MOUNTAIN VIEW 4J**

CA-PG1360297 / WFL 4J / Polled / Purebred / 12-Jan-21

MRL CAPONE 130B  
KWA RED ITALIAN 122E  
KWA MS ROCK 14X  
WFL WESTERDALE 6E  
WFL 9072 MS RED DOLL 913G  
WFL MS RED DOLL 9072W

Act BW: 77

Adj WW: 815

Adj YW: 1390

CE 7.8 BW 3.6 WW 97.6 YW 140 Milk 24.3 MCE 4.1



Dam of Mountain View



Sire of Mountain View



- Homo polled, smooth fronted
- The Raven cow family has been extremely good to us for years raising good bulls and foundation females
- We have a maternal sister in herd, brothers sold to 2E Ranch and Shiloh Cattle Company

4

**CITYVIEW NIGHT TRAIN 23L**

CA-BPG1424749 / CVBB 23L / Polled / Purebred / 11-Jan-23

KWA RED ITALIAN 122E  
WFL MOUNTAIN VIEW 4J  
WFL 9072 MS RED DOLL 913G  
MRC BROKER 6Z  
CITY VIEW RAVEN 94E  
CITY VIEW 127T RAVEN 55Z

Act BW: 96

Adj WW: 645

Adj YW: 1171

CE 5 BW 4.1 WW 83.5 YW 121.7 Milk 23.7 MCE 0.9



Granddam of Lot 4



Grandsire of Lot 4



- Homo polled and non-diluter, he ranks in the top 20% for weaning weight
- A long bodied, performance bull that would work great on cows
- Maternal brothers sold to Trevor Benson and Bonnie Brandt and the Clubbe's, his dam is another of the super consistent Boss Lady cow family

5

**CITYVIEW ROCKY 16L**

CA-PG1424700 / CVJB 16L / Polled / Purebred / 8-Jan-23

KWA RED ITALIAN 122E  
WFL MOUNTAIN VIEW 4J  
WFL 9072 MS RED DOLL 913G  
CMS UNIVERSE 838U  
CITY VIEW YAFFINGALE 8Y  
CITY VIEW WATCH ME 2W

Act BW: 102

Adj WW: 676

Adj YW: 1265

CE 3.8 BW 6.2 WW 90.1 YW 129.5 Milk 25 MCE 3.2



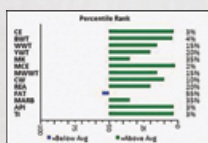
Granddam of Lot 5



Grandsire of Lot 5

## Lot 6

- Homo Polled, non-diluter with an incredible EPD profile, raised by a beautiful blaze faced two-year old with a stellar udder
- Calving ease bull! Top 3% C.E., top 5% B.W., actual birth weight of 75 pounds
- Moderate framed, stout made, dark footed with a great disposition



25L EPD



Dam of Lot 6



6

**CITYVIEW MOUNT EVEREST 25L**

CA-PG1425957 / ADDY 25L / Polled / Purebred / 12-Jan-23

KWA RED ITALIAN 122E

WFL MOUNTAIN VIEW 4J

WFL 9072 MS RED DOLL 913G

PERKS RED WOLF 44G

RCF UNTOUCHABLE 911J

BEE UNTOUCHABLE 911G

Act BW: 75

Adj WW: 707

Adj YW: 1253

CE 15.4 BW -0.4 WW 88.6 YW 126.8 Milk 28.2 MCE 10.2

**CITYVIEW READY OR NOT 56L**

CA-PTG1426304 / CVBB 56L / Polled / Purebred / 22-Jan-23

R PLUS VENOM 4006B

R PLUS REDDINGTON 0143H

MISS R PLUS 6168D

SVS BETTS 808F

CITY VIEW BETH 87J

SUNNY VALLEY PAYTON 77E

Act BW: 99 ET

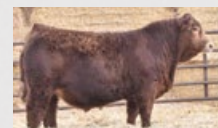
Adj WW: 733

Adj YW: 1365

CE 8.1 BW 4.5 WW 82.5 YW 122.6 Milk 24.9 MCE 4.2



Dam of Lot 7



Sire of Lot 7

## Lot 7

Ready Or Not...here's a bold herdsire prospect who has made himself many friends on pen tours. Phenotypically, Ready Or Not is soft made, wide hipped and has a true herd bull presence about him. Most importantly, he has an outstanding foot and a great disposition. Genetically, he is quite exciting as well. He is sired by the popular Reddington bull and his mother is a direct flushmate to City View Jewel. She is now making a huge name for herself at Mader Ranches producing their lead off red bull this year and winning the Progeny of Dam class at Farmfair for them. We were fortunate to have two sisters to that elite female including Beth who went on quite a run in her own right for the kids. We had the massive misfortune of losing her after Agribition so this will be your only opportunity to buy a son. We believe Ready Or Not is a tremendous opportunity for the Simmental breed! Ready Or Not, here he is!





Walk The Line is the record setting Simmental sire who is undoubtedly the #1 registration sire of the year. He took the industry by storm as a calf with his incredible mass, dimension, early maturity and performance. He has done a great job of consistently stamping his progeny and passing on his high performance ability.

RS

### MADER WALK THE LINE 92J

CA-PTG1358996 / MDR 92J / Polled / Purebred / 17-Jan-21

NCB COBRA 47Y  
MADER WALK THIS WAY 224B  
MADER P IRON SUGAR 7X  
MR HOC BROKER  
IRCC DARLIN' 613D  
DESTINY ODIN SHEA

Act BW: 87  
Adj WW: 1042  
Adj YW: 1530

CE 11 BW 2 WW 117 YW 173.4 Milk 27.7 MCE 8.3



Dam of Walk The Line



Daughter of Walk The Line



LOT 8

- Homo polled, non-diluter red baldie son of Walk The Line
- Above average EPD profile with a maternal brother selling to Meyers Simmentals
- Dam is an ET daughter of 12X who registered 11 progeny, his daughters will be excellent cows

### CITYVIEW EXTREME 12L

CA-PG1424693 / CVBB 12L / Polled / Purebred / 7-Jan-23

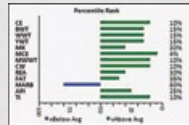
MADER WALK THIS WAY 224B  
MADER WALK THE LINE 92J  
IRCC DARLIN' 613D  
STARWEST POL BLUEPRINT  
CITY VIEW ET XTRAVAGANCE 82F  
CITY VIEW XTRAVAGANCE 12X

Act BW: 92  
Adj WW: 619  
Adj YW: 1208

CE 12.6 BW 1.4 WW 88.6 YW 129.3 Milk 29.6 MCE 8.9



Granddam of Lot 8



12L EPD



LOT 9

- A homo Polled, long bodied and larger framed Walk The Line son
- He ranks in the top 15% of the breed for many EPD traits
- His dam came from the Sunnyside program, we have two maternal sisters and another sold to Sun Star Simmentals

### CITYVIEW LIVIN THE DREAM 18L

CA-PG1424734 / CVBB 18L / Polled / Purebred / 9-Jan-23

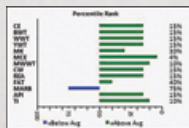
MADER WALK THIS WAY 224B  
MADER WALK THE LINE 92J  
IRCC DARLIN' 613D  
ERIXON RED RIOT 27U  
SUNNYSIDE 641B  
SUNNYSIDE MISCHESTER 641W

Act BW: 84  
Adj WW: 683  
Adj YW: 1273

CE 12.4 BW 1 WW 89.1 YW 133.4 Milk 29.3 MCE 9



Maternal Sister to Lot 9



18L EPD

8

9



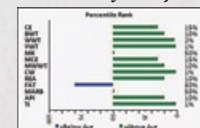


## Lot 13

- Homo Polled with an exceptional EPD set
- Long bodied, good footed, heavy muscled with a great disposition and awesome look
- Raised by a soft made, big bodied National daughter who was a show cow for the kids



### Grandsire of Many Lots



13L EPD

## 13

**CITYVIEW RING OF FIRE 13L**

CA-BPG1424694 / CVJB 13L / Polled / Purebred / 7-Jan-23

MADER WALK THIS WAY 224B

**-MADER WALK THE LINE 92J**

IRCC DARLIN' 613D

MADER THE NATIONAL 43E

-CITYVIEW STAR 19H

CITY VIEW UNIQUE 35F

Act BW: 84

Adj WW: 658

Adj YW: 1296

## 14

## CITYVIEW ICE MAN 30L

CA-PG1424909 / CVBB 30L / Polled / Purebred / 15-Jan-23

SVS TYCOON 841F

-CITYVIEW JYNX 46J

CITY VIEW UNIQUE 620D

LFE BS LEWIS 803C

**-OUTLAW MISTRESS 830F**

OUTLAW MISTRESS 54B

Act BW: 102

Adj WW: 768

Adj YW: 1466



*Lot 14 & Dam*



**Lot 14**



## Lot 14

It's so exciting for us to share Ice Man with the industry as we believe he has a great deal to offer the breed with his added length of side, his increased frame score, deep red colour, large testicle and his ever popular full blaze face. Ice Man's gorgeous dam was among the most talked about females in the breed last fall and garnered much deserved attention. Together they won many titles for Addy on the Junior Show circuit and they capped off their tour being named Champion Senior Female at Agribition. On his own merit, Ice Man was the Reserve Champion Bull at the Junior Stockman's Show. 830F's flawless udder design stopped many in their tracks and she is now our most potent donor with a large group of progeny on the ground this winter. She already sent a son to longtime customer, McLaren Farms. This pair defines what we believe Simmental cattle should be. Powerful, sound and multidimensional. Ice Man is big time breeding piece with limitless potential!

15

**CITYVIEW ROLLIN COAL 50L**

CA-BPG1424875 / CVBB 50L / Polled / Purebred / 20-Jan-23

SVS TYCOON 841F

Act BW: 91

CITYVIEW JYNX 46J

Adj WW: 629

CITY VIEW UNIQUE 620D

Adj YW: 1261

MADER THE NATIONAL 43E

CITY VIEW DESIREE 69G

TRI-R MS DESIREE 13D

CE 10.5

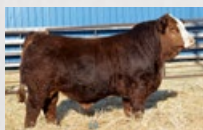
BW 2.6

WW 84.7

YW 132.6

Milk 25

MCE 4.8



Sire of Lots 14 &amp; 15



Grandsire of Lot 15



LOT 15

- 50L is among the most eye appealing black bulls in the pen and is so well put together
- Homo polled and non-diluter with an above average set of EPD's sired by one of our past high sellers
- A sought after pedigree including the Tycoon, The National, Broker and Riddler

16

**CITYVIEW IRON MAN 80L**

CA-PTG1426312 / CVBB 80L / Polled / Purebred / 27-Jan-23

ERIXON BITTEN 203A

Act BW: 106 ET

SAS COPPERHEAD G354

Adj WW: 770

SAS MISS ARAPHAOE B354

Adj YW: 1380

CMS UNIVERSE 838U

CITYVIEW YOUNGVICTORIA 7Y

CITY VIEW WIFEMATERIAL 1W

CE 1.8

BW 6.7

WW 101.1

YW 141.3

Milk 27.3

MCE -0.5



Sire of Lot 16



Full Sister to Lot 16



LOT 16

- A Copperhead bull out of our faithful 7Y donor, a full brother to the popular group of flushmates that sold last year
- Liver red and as long as they come with top top 2% weaning and top 5% yearling EPD's and a nearly 800 pound adjusted weaning weight
- A Copperhead son was our lead off bull last year to Jamie Cockburn

17

**CITYVIEW JOKER 41L**

CA-PG1424897 / CVBB 41L / Polled / Purebred / 18-Jan-23

MRL PLAYMAKER 36G

Act BW: 90

DANA MR. WESTWAY 40J

Adj WW: 627

DANA RED LICIOUS 565C

Adj YW: 1184

BERTS DAKOTA 7D

CITYVIEW YOUNGVICTORIA 132H

CITYVIEW YOUNGVICTORIA 7Y

CE 6.8

BW 3.6

WW 84.4

YW 120.8

Milk 23.9

MCE 4.2



Dam of Lot 16



Sire of Lot 17

Graddam of Lot 17 &amp; 20



LOT 17

- The only bull from our new Playmaker son we purchased from Westway Farms
- He is homo polled and a non-diluter with a very balanced set of EPD's
- His dam is a maternal sister to lot 16, the 7Y donor was a beautiful cow who generated more than her share of revenue

**TJT2F SUNNYSIDE 2F**

CA-PG1247220 / TJT 2F / Polled / Purebred / 14-Jan-18

KWA ROCK 36B

Act BW: 96

**CITY VIEW DAMASCUS 605D**

Adj WW: 813

CITY VIEW 18T UNIQUE 428B

Adj YW: 1343

LFE RED CASINO 3036X

**ERIXON LADY 2C**

ERIXON LADY 13A

CE 12.4 BW 2.8 WW 80.9 YW 112.7 Milk 24.3 MCE 6.5



"Tom" is one of our walking herd bulls here and he's done a great job over the years. We are really happy with his daughters and sons alike. We had regretted not keeping a piece of his sire when Sunnyside purchased him so when they came out with this long bodied, blaze faced we knew he was the replacement we needed.

**CITYVIEW JET EYE 69L**

CA-PG1425358 / CVBB 69L / Polled / Purebred / 24-Jan-23

CITY VIEW DAMASCUS 605D

Act BW: 87

**TJT2F SUNNYSIDE 2F**

Adj WW: 587

ERIXON LADY 2C

Adj YW: 1091

BOUNDARY STUBBY 129A

**CITY VIEW NORDICA 39E**

CITY VIEW XCELLENCE 18X

CE 11.1 BW 2.4 WW 67.6 YW 92.8 Milk 23.8 MCE 5.8



LOT 18

- A long bodied, solid coloured bull that is a non-diluter with a excellent foot quality
- With names like Stubby, Ishee, Nordica and Unique in his pedigree, keep every daughter
- His grand dam, 18X, was a tremendous production cow who raised many daughters



Granddam of Lot 18



Grandsire of Lot 18

**CITYVIEW LAZER TAG 83L**

CA-PG1424893 / CVBB 83L / Polled / Purebred / 27-Jan-23

CITY VIEW DAMASCUS 605D

Act BW: 105

**TJT2F SUNNYSIDE 2F**

Adj WW: 703

ERIXON LADY 2C

Adj YW: 1266

BERTS DAKOTA 7D

**CITY VIEW NORDICA 100G**

CITY VIEW 18X NORDICA 1Z

CE 9 BW 5.4 WW 83.8 YW 116.4 Milk 27.3 MCE 5



LOT 19

- A larger framed, homo polled and non-diluter baldie faced bull with a great disposition
- He comes with an extremely balanced set of EPD's and huge maternal capability
- 83L is very closely related to lot 18 with that 18X cow on the bottom side of the pedigree



Granddam of Lot 19

20

**CITYVIEW SLIDER 88L**

CA-PG1424895 / CVBB 88L / Polled / Purebred / 31-Jan-23

CITY VIEW DAMASCUS 605D

Act BW: 88

TJT2F SUNNYSIDE 2F

Adj WW: 694

ERIXON LADY 2C

Adj YW: 1288

BGS/BM CAPTAIN SCREAM 63D

CITY VIEW KORA VICTORIA 78G

CITYVIEW YOUNGVICTORIA 7Y

CE 9.7 BW 3.8 WW 89.9 YW 128.9 Milk 22.6 MCE 5.4



Dam of Lot 16  
Granddam of Lot 17 & 20



Full Brother to Dam  
of Lot 20



LOT 20

- A high performing Tom son that is homo polled and a non-diluter
- He ranks in the top 10% for weaning and top 20% for yearling but still had a moderate birth of just 88 pounds
- His grand dam, 7Y, has been extremely influential in our work with 20 registered progeny and several ET flushes in her career, same cow family as lots 16 & 17

21

**CITYVIEW HANK 102L**

CA-PG1424907 / CVJB 102L / Polled / Purebred / 5-Feb-23

CITY VIEW DAMASCUS 605D

Act BW: 83

TJT2F SUNNYSIDE 2F

Adj WW: 587

ERIXON LADY 2C

Adj YW: 1161

MADER THE NATIONAL 43E

CITYVIEW YEARNING 107H

CITY VIEW YEARNING 22Y

CE 11.4 BW 3 WW 81.3 YW 120.9 Milk 20.7 MCE 7.9



Sister to Dam of Lot 21



Grandsire of Many Lots



LOT 21

- 102L is a homo polled, non diluter, dark red and hairy with extra extension and tidy skull
- A maternal sister to his dam is doing a great job at Mavv Farms producing a couple front end lots in their last sale
- A very user friendly option that ranks in the top 15% for calving ease and just an 83 pound birth weight

22

**CITYVIEW TORNADO 124L**

CA-PG1428270 / CVJB 124L / Polled / Purebred / 28-Feb-23

CITY VIEW DAMASCUS 605D

Act BW: 100

TJT2F SUNNYSIDE 2F

Adj WW: 721

ERIXON LADY 2C

Adj YW: 1274

BERTS DAKOTA 7D

CITYVIEW TARA 101H

CITYVIEW 15Y TARA 429B

CE 8.7 BW 4.8 WW 83.6 YW 116.1 Milk 28.5 MCE 4.9



Grandsire of Lot 22



LOT 22

- A long bodied, homo polled and non-diluter red baldy bull
- The maternal side has a percentage of fleckvieh coming from the Tara cow family who gave us many good females
- He is the youngest calf in our offering who has kept up with his older counterparts



**CITYVIEW STOMPIN TOM 68L**

CA-PG1424913 / CVBB 68L / Polled / Purebred / 24-Jan-23

CITY VIEW DAMASCUS 605D  
TJT2F SUNNYSIDE 2F  
ERIXON LADY 2C  
OAKVIEW DOMINATOR 133D  
CITY VIEW SO SEDUCTIVE 105F  
SUN STAR SO SEDUCTIVE 14D

Act BW: 98  
Adj WW: 680  
Adj YW: 1286

CE 9.9    BW 3    WW 71.2    YW 102.4    Milk 29.2    MCE 6.1



Maternal Brother to Lot 23



Maternal Brother to Lot 23

- A homo polled and non-diluter bull with a balanced EPD profile that should make great daughters
- Maternal brothers sold to Lloyd & Sylvia Fox and Devin & Randi Wenzel
- His young dam is doing a great job of producing really function, user friendly cattle

*Thank You!*



CITYVIEW/ULTRA LARAMIE 99L, Purchased by Pheasantdale Cattle Co. at Friday Night Lights



CITYVIEW LICORICE 49L, Purchased by Rocking P at Friday Night Lights



CITYVIEW MS AVA 237K, Purchased by Quinn Hoegl at Ultimate Red & Black



CITYVIEW NORDICA 236K, Purchased by Oh Kay Farms at Ultimate Red & Black



CITYVIEW KIRA 253K, Purchased by Willowdale Simmentals at Ultimate Red & Black



CITYVIEW 65H HOPE 302K, Purchased by Rolling JN Farms at Ultimate Red & Black



RS

**WFL MR. WESTWAY 123H**

CA-PG1318382 / WFL 123H / Polled / Purebred / 10-Feb-20

RED SODER HORIZON 693B

Act BW: 84

SODER RED REACTION 663D

Adj WW: 762

SODER MS USHER 3740A

Adj YW: 1288

SVS REDDINGTON 422B

WFL RED TWIZZLER 607D

WFL RED TWIZZLER 421B

CE 10.4 BW 2 WW 76.7 YW 94.8 Milk 22.3 MCE 6.1

Daughter of  
Mr. Westway 123HDaughter of  
Mr. Westway 123H

Our search for an easy calving bull for heifers lead us to Westway Farms a couple years ago where we were so impressed by the pen. We appreciated 123H on paper as well as his outcross pedigree to our entire program. He has proven to calve very well just like we had hoped and we've been very happy with the performance he is demonstrating as well.

24

**CITYVIEW DIRECT ACTION 38L**

CA-PG1425963 / CVBB 38L / Polled / Purebred / 17-Jan-23

SODER RED REACTION 663D

Act BW: 91

WFL MR. WESTWAY 123H

Adj WW: 735

WFL RED TWIZZLER 607D

Adj YW: 1215

AJB POLLED GRAPHIX 68G

CITYVIEW AMY 8J

CITYVIEW ADDIE 58F

CE 14.9 BW 1.5 WW 75.2 YW 95.1 Milk 32.5 MCE 10.2



Grandsire of Lot 24



LOT 24

- 38L is a red baldie, homo polled, non-diluter whose mother is full fleck and a maternal sister to lot 3
- Top 3% for calving ease and top 2% for maternal calving ease out of a first calver
- His adjusted performance rankings put him right amongst the heavy weights

25

**CITYVIEW MAMBO 115L**

CA-PG1428258 / CVBB 115L / Polled / Purebred / 18-Feb-23

SODER RED REACTION 663D

Act BW: 98

WFL MR. WESTWAY 123H

Adj WW: 773

WFL RED TWIZZLER 607D

Adj YW: 1357

SVS TYCOON 841F

CITYVIEW MISS JAZZ 115J

CITYVIEW KORA 18E

CE -0.8 BW 5.3 WW 95.5 YW 130 Milk 26.3 MCE -4.4



Grandsire of Lot 25



LOT 25

- A moderate framed, deep sided, red baldy bull that is homo polled
- He ranked near the top of the pen for adjusted weaning ratios and has a top 4% weaning EPD
- His dam comes from one of our oldest cow families and a maternal sister sold to Willowdale Simmentals

26

**CITYVIEW REACTION 71L**

CA-PG1425989 / CVJB 71L / Polled / Purebred / 25-Jan-23

SODER RED REACTION 663D  
**WFL MR. WESTWAY 123H**  
 WFL RED TWIZZLER 607D  
 BERTS DAKOTA 7D  
**CITYVIEW JADA 129J**  
 CITY VIEW TARA 88E

Act BW: 83

Adj WW: 659

Adj YW: 1155

CE 10.9 BW 2.7 WW 73.3 YW 93.7 Milk 27.9 MCE 6.8



LOT 26

- 71L is dark red, homo polled and a non-diluter
- With just an 83 pound birth weight and a top 20% calving ease EPD, he could work on heifers
- His mother is another of those good Tara females, a great deal of maternal ability



Grandsire of Lot 26

27

**CITYVIEW RED ROLLER 40L**

CA-PG1425964 / CVJB 40L / Polled / Purebred / 18-Jan-23

SODER RED REACTION 663D  
**WFL MR. WESTWAY 123H**  
 WFL RED TWIZZLER 607D  
 WHF LIMITLESS B011  
**CITYVIEW JANE 52J**  
 CITY VIEW TARA 53G

Act BW: 87

Adj WW: 721

Adj YW: 1182

CE 9.9 BW 2.6 WW 80.8 YW 105 Milk 24.9 MCE 7



LOT 27

- A homo polled and non-diluter bull with a moderate birth weight out of a two year old female with a bright future
- Dark red and extremely hairy in a long bodied, smooth made package
- His dam comes from the Tara cow family with a shot of fleckvieh on the bottom side



Grandsire of Lot 27

28

**CITYVIEW TRAVELIN MAN 118L**

CA-PG1428262 / CVBB 118L / Polled / Purebred / 21-Feb-23

SODER RED REACTION 663D  
**WFL MR. WESTWAY 123H**  
 WFL RED TWIZZLER 607D  
 ANCHOR D RAPTOR 392C  
**CITYVIEW JURNEE 60J**  
 KEET'S CAMISHA 4C

Act BW: 105

Adj WW: 792

Adj YW: 1384

CE 8.1 BW 4.5 WW 85.7 YW 118.8 Milk 30.8 MCE 4.6



LOT 28

- A smooth polled, non-diluter who ranks above average in 10 traits
- He's a solid red, long bodied bull with 50% fleckvieh influence on the bottom side of the pedigree
- His dam is a moderate, liver red, goggle eyed full fleck cow with a bright future and tons of maternal ability



Granddam of Lot 28



Grandsire of Lot 28

29

**CITYVIEW MOONWALKER 60L**

CA-PTRS1426306 / CVBB 60L / Polled / 7/8 / 22-Jan-23

LCDR AMERICAN RED 99E  
**CROSSROAD APOLLO 123H**  
 CROSSROAD ESSENCE 48E  
 NCB COBRA 47Y  
**MADER LADY 50G**  
 ERIXON LADY 202S

Act BW: 93 ET  
 Adj WW: 668  
 Adj YW: 1236

CE 7.6 BW 3.7 WW 90.4 YW 137.4 Milk 30 MCE 6.9



Dam of Lot 29



Granddam of Lot 29



LOT 29

- An outcross pedigree, big performance bull purchased as an embryo from Maders by the beautiful 50G cow
- His above average EPD profile is capped off with top 10% weaning and yearling values
- Very clean fronted, attractively designed, good footed, red bull

RS

**NGDB TUX 6J**

CA-BPTG1359733 / NGDB 6J / Polled / Purebred / 3-Jan-21

LFE VIPER 455U  
**NCB COBRA 47Y**  
 NCB MISS DREAM 22T  
 DRAKE POKER FACE 2X  
**NGDB ELVIRA 734E**  
 LFE BS BROCKALEE 90X

Act BW: 92  
 Adj WW: 839  
 Adj YW: 1367

CE 11.6 BW 2 WW 79.6 YW 112.6 Milk 22.2 MCE 8.1



Sire of Tux



Full Sister to Tux



Our program is predominantly red based females but we were ready to add a heterozygous black sire to our line up. We had always admired the Cobra cattle and found Tux at Hoegl Livestock. This first calf crop has proven his ability to produce beyond himself and we are quite excited about his bulls and heifers alike.

30

**CITYVIEW BALD EAGLE 109L**

CA-BPG1425366 / CVBB 109L / Polled / Purebred / 13-Feb-23

NCB COBRA 47Y  
**NGDB TUX 6J**  
 NGDB ELVIRA 734E  
 BLACKGOLD MIND GAME 129C  
**CITY VIEW ZELDA 62E**  
 CITY VIEW 6Z ZELDA 423B

Act BW: 89  
 Adj WW: 729  
 Adj YW: 1196

CE 13.5 BW 0.2 WW 75.8 YW 107.9 Milk 22.1 MCE 9.3



Granddam of Lot 30



LOT 30

- Another calving ease option with a popular blaze face
- He ranks in the top 10% for calving ease and birthweight as well as top 3% for maternal calving
- He traces back to Brody and Addy's first cow who gave them a great start in the business

31

**CITYVIEW BLACK JACK 64L**

CA-BPG1425844 / CVBB 64L / Polled / Purebred / 23-Jan-23

NCB COBRA 47Y  
 NGDB TUX 6J  
 NGDB ELVIRA 734E  
 HARVIE BOONDOCK 12Z  
 CITY VIEW RAVEN 656D  
 3D MISS BLK RAVEN 127T

Act BW: 98

Adj WW: 662

Adj YW: 1177

CE 9.1 BW 2.9 WW 71.1 YW 95.1 Milk 26.2 MCE 4.5



LOT 31

- A homo polled, moderate framed, soggy built son of Tux
- He has an extremely maternal pedigree with female makers like Cobra, Boondock and the Raven cow family
- Maternal brother at K.G. McLaren Farms, his dam is a direct daughter of donor cow 127T



Granddam of Lot 31



Maternal Brother to Lot 31

32

**CITYVIEW ZZ TOP 74L**

CA-BPG1424908 / CVBB 74L / Polled / Purebred / 26-Jan-23

NCB COBRA 47Y  
 NGDB TUX 6J  
 NGDB ELVIRA 734E  
 SVF ALLEGIANCE Y802  
 CITY VIEW RIGHT ON 21F  
 CITY VIEW 12X RIGHT 408B

Act BW: 96

Adj WW: 650

Adj YW: 1239

CE 12.5 BW 1.2 WW 78.5 YW 111.6 Milk 22.8 MCE 8.3



LOT 32

- An extremely attractive, big presence, homo polled bull that's easy to notice
- User friendly with rankings in the top 10% calving ease and top 15% for birth weight
- Maternal sister in herd, his cow family traces back to donor cow 12X like lot 8



Granddam of Lot 32



Grandsire of Lot 32

33

**CITYVIEW TAC OIL 105L**

CA-BPG1425849 / CVBB 105L / Polled / Purebred / 6-Feb-23

NCB COBRA 47Y  
 NGDB TUX 6J  
 NGDB ELVIRA 734E  
 DOUBLE BAR D TANKER 191Y  
 SUNNYSIDE 30C  
 JHSN CLUB QUEEN 30Y

Act BW: 78

Adj WW: 605

Adj YW: 1173

CE 10.8 BW 0.6 WW 72.7 YW 106 Milk 23.1 MCE 5.7



LOT 33

- A homo polled, calving ease option with lots of muscle expression
- Started with just a 78 pound birth weight and above average values for CE and BW
- Maternal brothers sold to John Howe and Jake Carroubourg as well as a sister to McIntosh Livestock

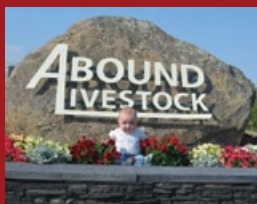


Maternal Sister to Lot 33



Maternal Brother to Lot 33

# ABOUND LIVESTOCK



Challenge... a call to engage in a contest, fight, or competition... well mother nature we will see you for another round in 2024! Hopefully everyone was able to cash in on some record setting cattle prices and I hope we can milk every penny while we the producers have the chance. The best way to make that happen is to invest in a new herd bull and keep moving forward. This year's offering has what we feel are proven yet exciting opportunities. If you want mega cow power that will leave you scale crushing steers and world class front pasture females or a sleep easy calving ease to get the heifers off and rolling the first time around, we have options for you on March 19th.

We have never lost sight of the fact that foot and structure qualities are key to longevity and we make our breeding decisions with that being number one or two on the checklist. Unfortunately, that basically eliminates 90% of the breed when selecting a new sire. We have had to compromise in other areas to achieve this goal, but I encourage you to "look down" and take that into consideration and know that this can't happen in one generation of breeding. I won't say they are spot on perfect, but I can tell you we feel we are on the right path for future success in this area. We feel you need to have a solid foundation first and bells and whistle's come second!

We walk the purebred mother cows right beside our commercial cows and treat them all the same. We feel the cows should work for us and not the other way around. So rest assured they are made to work and know how to dig late into the fall and early winter making a living on stubble and stockpiled grass just like they should.

The bulls are developed on a textured ration from Trouw and the finest southern Saskatchewan ditch hay. This gives them plenty of pizza boxes, beer cans, and other random articles to chew on. Thanks again to Jessica Hextall from Trouw for making sure things are up to snuff nutrition wise.

If you haven't noticed yet, we as a family have been talking about having the sale on home turf for some time now. There comes a time the next step has to happen and the 14th annual is going to take place at Blaine and Tina's home yard. It will be a video format and we hope this will make for less stress on many levels. Blaine and Tina have a great set of Simmental bulls on offer and we once again welcome back Sarah and the Gold-Bar crew. As always, come for a tour anytime and please reach out if you have any questions. Thanks again to all our past customers and we can't wait to visit with everyone on the 19th!

Talk to you soon,

*Brian, Lisa and Cassie*



HERD SIRE – ELLINGSON PROFOUND 8155

Ellingson Profound is one of our new AI sires. This is one of the very rare bulls that is ranked in the top 1% of the breed for claw and angle. In addition, this bull has so much to offer when it comes to overall mass and muscle shape.



LOT 34

Profound 314L has a little bit more frame and is sure to leave you with calves that will have the front row fighting each other to get the steers bought come fall. His dam, Blackbird 60B, is a no miss, very functional, balanced uddered cow that just does her thing every year and asks for very little in return. With daughters and grand daughters working in herd here at Abound, we are sure BARN 314L is going to leave you with a very functional set of replacement females in addition to some scale crushing steers.



LOT 35

Profound 311L is a powerhouse bull that has a super wide base and as thick of a top as you will find. His dam has recently been designated an elite dam within the Canadian Angus Association for her ability to raise calves with a superior weaning weight year after year. Profound 311L is a bull that packs everything his sire has to offer along with the standout maternal traits from his dam. This is a cross that is sure to check a lot of boxes!

34

ABOUND PROFOUND 314L

2310419 / BARN 314L / Purebred / February 02 2023

S POWERPOINT WS 5503	Act BW: 81
ELLINGSON PROFOUND 8155	Adj WW: 709
EA ROSETTA 6157	Adj YW: 1255
SANDY BAR IDEAL 185W 216Y	
IVANHOE BLACKBIRD 60B	
GLENDOR BLACKBIRD 43Z	
BW 3	WW 69
YW 107	Milk 17
CE 3	MCE 8

35

ABOUND PROFOUND 311L

2314032 / BARN 311L / Purebred / January 31 2023

S POWERPOINT WS 5503	Act BW: 89
ELLINGSON PROFOUND 8155	Adj WW: 684
EA ROSETTA 6157	Adj YW: 1213
CRESCENT CREEK RITO 139C	
ABOUND ROYAL PRIDE 711E	
IVANHOE ROYAL PRIDE 3Z	
BW 5	WW 72
YW 124	Milk 16
CE -4	MCE 2

36

**ABOUND PROFOUND 322L**

2314034 / BARN 322L / Purebred / February 08 2023

S POWERPOINT WS 5503

Act BW: 96

**ELLINGSON PROFOUND 8155**

Adj WW: 638

EA ROSETTA 6157

Adj YW: 1197

BLACK RIDGE HARVESTOR 66D

**ABOUND ROYAL PRIDE 814F**

IVANHOE ROYAL PRIDE 3Z

BW 5.3

WW 64

YW 110

Milk 10

CE -3

MCE 5



LOT 36

This is our first offering of Ellingson Profound offspring, and we couldn't be happier in the consistency of not only these bulls but also the females. The feet are nearing perfection, they have added mass and just all-around great eye appeal. This is a bull that comes from one of our proven Royal Pride cow families here at Abound. This past fall at the age of 11 we retired his granddam. It was a hard decision because she looked, moved and was producing like she was a 5 year old but we all know the best way to avoid old croc cows is don't let them become old croc cows!

37

**ABOUND PROFOUND 319L**

2310420 / BARN 319L / Purebred / February 07 2023

S POWERPOINT WS 5503

Act BW: 100

**ELLINGSON PROFOUND 8155**

Adj WW: 718

EA ROSETTA 6157

Adj YW: 1250

SANDY BAR IDEAL 185W 216Y

**IVANHOE HEROINE A 6D**

IVANHOE HEROINE A 39W

BW 6.2

WW 72

YW 119

Milk 14

CE -7

MCE 2



LOT 37

Here is a larger framed Profound son that really gets out and can cover some ground. He is going to make some great feeder cattle for the new owner to market and it will have your accountants wondering where to put the extra cash come fall!

*Thank You!*



Thank you to Autumn Dew Land & Cattle for purchasing Abound Lass 316L. She is a Profound daughter that led off the heifer calves at the Masterpiece Sale this past October!

HERDSIRE - PF JACK DANIEL RLP 9J



Jack Daniel 9J is a bull that we purchased from Pieschel Farms. You have to bring your binoculars to see from his front to back and he displays that length on a perfect foot. He has a puppy dog quiet disposition but knows when it's go time because he doesn't stop to sleep for days come breeding season. His sire is the 2021 Agribition supreme champion, DMM Maximus 18G, and his dam is Cheetah 15X who is the heart of the Pieschel herd. Jack Daniel's pedigree has some of the best maternal traits in the breed and we can't wait for his females to be in production here at Abound.



LOT 38

38

ABOUND MAX 304L

2326898 / BARN 304L / Purebred / January 25 2023

DMM MAXIMUS 18G  
PF JACK DANIEL RLP 9J  
PF CHEETAH RLP 15X  
SANDY BAR IDEAL 185W 216Y  
IVANHOE BLACKBIRD 2A  
IVANHOE BLACKBIRD 34Y

Act BW: 95  
Adj WW: 661  
Adj YW: 1116

BW 4.6   WW 61   YW 100   Milk 25   CE -5   MCE 0

If you haven't noticed, length of spine is very important to us. We feel it's the easiest way to add pounds to the calf come fall without causing calving issues. However, it seems to be the hardest trait to breed into a program. Max 304L is as long as a freight train and is walking in his sire's footsteps with his make up and type. With the Blackbird 2A cow added into his straight Canadian pedigree, the females he will leave behind should be pretty damn sweet!



LOT 39

39

ABOUND MAX 328L

2326902 / BARN 328L / Purebred / February 14 2023

DMM MAXIMUS 18G  
PF JACK DANIEL RLP 9J  
PF CHEETAH RLP 15X  
SANDY BAR IDEAL 185W 216Y  
IVANHOE C C PRIDE 25A  
IVANHOE C. C. PRIDE 3Y

Act BW: 87  
Adj WW: 602  
Adj YW: 1189

BW 4.2   WW 54   YW 92   Milk 28   CE -3   MCE 3

328L is super soft made, easy moving and has a square wheelbase with a great foot. The cherry on top is that he has mega hair like something shot out of an 80's dance party! Swing for the fences boys and girls because this guy will getter done!

40

### ABOUND MAX 340L

2326912 / BARN 340L / Purebred / March 10 2023

DMM MAXIMUS 18G	Act BW: 74
PF JACK DANIEL RLP 9J	Adj WW: 679
PF CHEETAH RLP 15X	Adj YW: 1168
HF ALCATRAZ 60F	
J SQUARE S ENCHANTRESS 47H	
J SQUARE S ENCHANTRESS 518C	
BW 2.4	WW 58
YW 98	Milk 32
CE 3	MCE 3



LOT 40

Sometimes when you are the younger kid in the pen you have a hard time standing up to your older pen mates, but this young March bull has had no problem keeping up. He's got a big top, super long and an excellent disposition. His dam is a young Alcatraz female who knows how to milk. Barn 340L is jam packed with high maternal traits and keeps getting more and more impressive as each day goes by.

41

### ABOUND MAX 341L

2326901 / BARN 341L / Purebred / March 15 2023

DMM MAXIMUS 18G	Act BW: 84
PF JACK DANIEL RLP 9J	Adj WW: 601
PF CHEETAH RLP 15X	Adj YW: 1103
SANDY BAR IDEAL 185W 216Y	
IVANHOE POLLYANNA 5A	
YOUNG DALE POLLYANNA 113Y	
BW 2.9	WW 50
YW 84	Milk 28
CE 2	MCE 7



LOT 41

Take note of the birth date here yet this guy is still showing that he can roll with the big boys! The Pollyanna mother to this youngin is a lower profiled, big middled cow. You can find many maternal siblings working in herd here!



PF Cheetah RLP 15X, Dam of PF Jack Daniel RLP 9J



DMM Maximus 18G, Sire of PF Jack Daniel RLP 9J



DMM 5C, Granddam of PF Jack Daniel RLP 9J



Bell Rainy Day 4H is a direct son of SAV Rainfall 6846, a bull who wrote a whole new chapter when it came to producing top calving ease genetics. Rainy Day 4H is a bull that we used in both our purebred and commercial heifer herds with great success.



**ABOUND RAINY DAY 320L**

2314041 / BARN 320L / Purebred / February 07 2023

S A V RAINFALL 6846  
BELL RAINY DAY 4H  
BELL BLACK LUCY 1B  
BORDER BUTTE TANNERITE 350G  
ABOUND DNA PRIDE 132J  
ABOUND DNA PRIDE 819F

Act BW: 59  
Adj WW: 630  
Adj YW: 1249

BW -0.8   WW 53   YW 99   Milk 25   CE 11   MCE 13

LOT 42

Rainy Day 320L has a nice amount of bone, lots of middle, hangs his meat down low and is a good calving ease option. The Rainy Day calves always have lots of vigor with a good rate of gain. Only down fall with him is he was stepped on and lost his tail switch as calf so whoever buys him will get a free fly swatter on us!



**ABOUND RAINY DAY 324L**

2314038 / BARN 324L / Purebred / February 10 2023

S A V RAINFALL 6846  
BELL RAINY DAY 4H  
BELL BLACK LUCY 1B  
BORDER BUTTE TANNERITE 350G  
ABOUND ROYAL PRIDE 106J  
ABOUND ROYAL PRIDE 711E

Act BW: 83  
Adj WW: 770  
Adj YW: 1423

BW 3.2   WW 72   YW 131   Milk 28   CE 1   MCE 7

LOT 43

This bull is out of a fairly peppy first calf heifer from the Royal Pride cow family. He has a huge top, big middle, and a very proud look to him when you get his attention. He had better things on his mind every time he went in the picture pen, so this is as good as it gets after four attempts but be sure to find him sale day because he is worth the trip!

44

**ABOUND RAINY DAY 329L**

2314042 / BARN 329L / Purebred / February 16 2023

S A V RAINFALL 6846

Act BW: 70

**BELL RAINY DAY 4H**

Adj WW: 648

BELL BLACK LUCY 1B

Adj YW: 1146

ABOUND MERGER 923G

**ABOUND HEROINE A 136J**

ABOUND HEROINE A 811F

BW 0.8

WW 53

YW 98

Milk 24

CE 6

MCE 10



LOT 44

Here is a Rainy Day son that is waiting for your heifer pen! He is smooth from front to back, has a solid set of EPD's and a pedigree that is sure to keep his frame score in check for the young ladies. The Heroine A cow family is no stranger to producing some top performing bulls for our past sales.

45

**ABOUND RAINY DAY 313L**

2317457 / BARN 313L / Purebred / February 01 2023

S A V RAINFALL 6846

Act BW: 63

**BELL RAINY DAY 4H**

Adj WW: 642

BELL BLACK LUCY 1B

Adj YW: 1186

ABOUND MERGER 923G

**ABOUND ELLA MINA 113J**

GLENDORE ELLA MINA 5A

BW -0.7

WW 53

YW 98

Milk 24

CE 9

MCE 12



LOT 45

Rainy Day 313L is another calving ease option. He has lots of length, smooth made and very athletic in his movement. We had the unfortunate luck of losing his dam but a full sister to her just calved with a picture perfect udder and top notch mothering skills. His granddam is one of those no fuss cows and just goes about her day to day business with no extra TLC. This is a trait that we really strive for in all of our females.

46

**ABOUND HARVESTOR 345L**

2326903 / BARN 345L / Purebred / March 29 2023

S A V HARVESTOR 0338

Act BW: 93

**BLACK RIDGE HARVESTOR 66D**

Adj WW: 630

BLACK RIDGE LEONA 22W

Adj YW: 1274

SANDY BAR IDEAL 185W 216Y

**IVANHOE ROYAL PRIDE 52B**

IVANHOE ROYAL PRIDE 3Z

BW 4

WW 42

YW 80

Milk 19

CE -1

MCE 8



Harvestor 66D, Sire



LOT 46

In the spring of 2023, we told Harvester 66D that he was going to have to retire this year and he was out of work. However, he decided to have the last word and tell us when he was going to retire so we present to you Harvester 345L! We aren't complaining though because in addition to this guy we were also lucky enough to get a rockstar heifer to add to one of our proven and hardworking Royal Pride cow families here at Abound. This young March bull really does showcase everything that we have loved about his sire group in the past. He is very complete in his make up with a nice clean head and lots of muscle pattern and shape.

47

### ABOUND MAXIMUS 302L

2326917 / BARN 302L / Purebred / January 19 2023

NORTHERN VIEW SMW GUSTOV 3Z  
**DMM MAXIMUS 18G**  
 DMM MISS ESSENCE 5C  
 K R GAVEL 1057  
**KR LADY MAY 4382**  
 WK LADY MAY 2347

Act BW: ET  
 Adj WW: 848  
 Adj YW: 1270

BW 5.5 WW 74 YW 124 Milk 29 CE -2.5 MCE -1.5



LOT 47

The ultimate of power bloodlines here! We purchased 4 embryos and reaped the rewards getting a bull and a heifer out of the deal. DMM Maximus 18G x KR Lady May 4382 is as powerful of a cross as you can get. Barn 302L rocked the scale and pounded down a 1032 lb weaning weight in some less than ideal conditions. His sister is in the top of the pack in our Abound heifer pen. When you talk about hip shape, dimension, and length of spine, he is the man for the job! Every heifer calf will be on the keeper list!



BARN 301L, Full Sister



Lady May 4382, Dam



DMM Maximus 18G, Sire



Sarah Hasson, Kaycee & Saige Buchanan  
[www.gold-bar.com](http://www.gold-bar.com)

**GOLD-BAR**  
 LIVESTOCK

48

### GOLD-BAR BV TEN FOUR 105L

2303786 / GBL 105L / Purebred / January 05 2023

S A V RENOWN 3439  
**BLAIR'S ROCCO 268F**  
 BAR-E-L ERICA 74A  
 ELLINGSON PROFOUND 8155  
**GOLD-BAR HEROINE 103J**  
 GOLD-BAR HEROINE 103F

Act BW: 79  
 Adj WW: 697  
 Adj YW:

BW 2.9 WW 70 YW 124 Milk 20 CE 0 MCE 5



LOT 48



Granddam of Lot 48

Gold-Bar BV Ten Four 105L packs a genetic and phenotypic punch. His sire, Blair's Rocco 268F is a son of the famous Bar-E-L Erica 74A. He is the first calf out of a beautiful Ellingson Profound daughter from our very prolific Heroine cow family. Ten Four has that extra depth of body and hair coat. Keep every daughter!

## What Do The Numbers Mean?

**Calving Ease (CE)** - The ease with which a bull's calves are born to first calf heifers. The larger EPD indicates a higher percentage of unassisted births for calves sired by that bull.

**Birth Weight (BW)** - Calf weight at birth adjusted to the dam's age. The larger EPD indicates a heavier average birth weight.

**Weaning Weight (WW)** - Weight taken between 160 and 250 days of age and adjusted to 205 days of age and to the dam's age. The larger EPD indicates a heavier average weaning weight for calves sired by that bull.

**Yearling Weight (YW)** - Weight taken between 330 and 440 days of age and adjusted to 365 days of age and to the dam's age. The larger EPD indicates a heavier average yearling weight for calves sired by that bull.

**Maternal Calving Ease (MCE)** - The ease a bull's daughters calve as first calf heifers. The larger EPD indicates a higher percentage of unassisted births for calves born to the sire's daughters.

**Milk** - The milk EPD is a predictor of a sire's genetic merit for milk as expressed in his daughters production, or in other words, the part of weaning weight attributed to milk genes. The larger EPD indicates heavier average weaning weights due to daughter's greater maternal ability.

**Total Maternal (TM)** - A bull's ability to pass on milk production and growth rate through his daughters. It predicts the total weaning (direct and maternal) that will be displayed in his daughter's offspring. It is calculated by adding half of the Weaning Weight EPD with the Milk EPD. The larger EPD indicates higher pounds at weaning.

**2023 Simmental Breed Averages** - CE 7.9 BW 3.4 WW 78.4 YW 116.1 Milk 26.3 MCE 4.3

**2023 Angus Breed Averages** - BW 2 WW 52 YW 92 Milk 23 CE 3.5 MCE 6.7

## Win a \$2000 Sale Credit


Purchase a bull from any current Saskatchewan Simmental member and when the registration papers are transferred, you are entered to win a \$2000 sale credit! The draw will be made at the SSA Annual general meeting in July and the lucky winner will have one year to use the credit at public auction or private sale on bulls or females from any current Saskatchewan member.

INNOVATIVE  
**PRODUCTS**  
ENHANCING YOUR NUTRITION  
**PROGRAM**  
MAKING YOU MORE  
**PROFITABLE**

**Contact your beef territory  
manager to learn more:**

Jessica Hextall (204)901-3058

 **trouw nutrition**  
a Nutreco company



City View Simmentals  
Box 1494  
Moose Jaw, SK  
S6H 7A8

If you would like to be removed from the mailing list  
please email [cityviewsimmentals@sasktel.net](mailto:cityviewsimmentals@sasktel.net)

---

**CITY VIEW SIMMENTALS & ABOUND LIVESTOCK**

14th Annual Bull Sale