

2024



SALE RESULTS
BULLS AVERAGE -
\$7,507

1PM MST • Tuesday

FEBRUARY 13th



Cody & Melissa Congdon
BASHAW, ALBERTA
Cody: 403.350.5791
Melissa: 403.586.3144
rockytopgelbviefarm@gmail.com



Rodney & Tanya Hollman
RED DEER COUNTY, ALBERTA
Rodney: 403.588.8620
Tanya: 403.352.9283
rodscattle@platinum.ca
www.royalwesterngelbvieh.com



2024 Draft
FEBRUARY 13th



East of Innisfail on Hwy # 590 approx 15KM,
Turn South on Range Road 270!
We are the first place on the east side.

VIEWING FEBRUARY 10, 11, 12 :: COFFEE AND SNACKS ALL DAY
SALE DAY LUNCH STARTS AT 11:30 AM MST
SALE TIME 1 PM MST

SALE CONTACTS

Scott Bohrson	403.370.3010
Taylor Richards	306.821.4169
Cody Haney	403.845.8806
Rodney Hollman	403.588.8620
Cody Congdon	403.350.5791
Tanya Hollman	403.352.9283
Dale Congdon	403.350.9830
Harvey Hollman	403.588.3913

SALES STAFF

Col. Ryan Dorran	403.507.6483
Taylor Richards	306.821.4169
Craig Flewelling	403.556.0515

INSURANCE

Doreen Flewelling	403.556.5886
flewcc@xplornet.com	

ONLINE BROADCAST

VIEW/BID LIVE ON THE INTERNET:



<http://www.liveauctions.tv>

call Nicki Ross for details

587-377-1580

TERMS & CONDITIONS

All bulls will sell under the standard terms and conditions set forth by the Canadian Gelbvieh Association.

All cattle sell with appropriate health and consignors will cover costs of health papers for all international sales.

Bulls will be Breeding Soundness checked and delivered to central points across western Canada or to nearest point of entry throughout March. For any buyers that want their newly purchased bulls managed at the sellers place beyond April 1st, those arrangements will need to be made at time of purchase. Sellers will offer to feed and manage those bull until they are required free of charge. The buyer will then be completely in charge of all trucking arrangements and costs.

Bulls returning to breeders places will require insurance.

ACCOMMODATIONS

Innisfail is only 10 minutes away and Red Deer is 15 min away with multiple hotel options. Please contact any of the consignors if you require help with booking accommodations.

All Day Open House

SATURDAY FEB.10, SUNDAY FEB.11, MONDAY FEB.12



On behalf of the Hollman & Congdon families, we are pleased to welcome you to the 2024 Draft Picks Bull sale. The Royal Western and Rocky Top Gelbvieh programs are like minded operations that strive to produce a quality product to positively impact your bottom line. Both operations responsibly develop and breed these bulls for longevity with a heavy emphasis on foot structure, soundness, fleshing ability and backed by a super cow behind them. We can't endorse both these programs enough and truly say they are the place to go when it comes to sourcing Gelbvieh and Balancer genetics.

The Royal Western Gelbvieh has received global recognition as producers of some of the highest quality genetics around the world. Their hard work and dedication towards the betterment of their breed does not go unnoticed and we truly commend them for all they have accomplished. From successful outings at Denver, Farm Fair and Agribition, the RWG "type" is a great one and one that can be appreciated by all. Their 2 year old bulls up for grabs in the Draft Picks are a big time opportunity to grab a more mature product with extra frame and scale to cover more cows for you. They are specifically bred and raised to sell as two's and go through many culling processes to get to this stage, so you know the fine detail has all been done for you. Great feet, athletic, easy fleshing and power bulls is what you will find here with a tonne of calving ease options.

Rocky Top Gelbvieh program has made huge strides the last decade and has been truly a fun, young operation to watch develop. Cody's keen eye and willingness to research and sort out the best genetics to bring in and utilize in his own program is as evident as ever as his 2024 offering is stacked in quality and pedigree. Red and black options that are modest birth, big growth bulls that's are a deep and consistent set. They always have a great set of calving numbers bred into their bulls with a heavy emphasis on maternal value.

We really encourage you to take the time to tour both operations before sale time to view the bulls and their dams. Both the Congdon's and the Hollman families would be pleased to tour you through their programs. The bulls will all be at Royal Western Gelbvieh sale week prior for viewing and we really hope you're able to take in sale day to enjoy some of the best hospitality from RWG. We recommend reaching out to Rodney and Cody to discuss your operations to help make a selection best suited for you. If any of us at Bohrsen Marketing can be of any service, please do not hesitate to contact us and utilize our free, confidential order buying and consultation services.

Best Regards,
Bohrson Marketing Services

Welcome Cattlemen,

The 2024 Draft Picks Bull sale will once again show case some of the most elite genetics you will find from the Gelbvieh breed! It's with great excitement and focus on the future that we open the doors to our breeding programs for your appraisal all in one location. This event will represent your first opportunity to make your "Draft Picks" and advance your own programs needs on Feb 13th, 2024.

The families at Rocky Top Gelbvieh & Royal Western Gelbvieh have always made a commitment on selective genetic advancement. In constant effort to maximize our customers opportunity for profitability. We have always maintained a focus in all phases of the beef production industry to insure we don't become singular in selective traits. Bulls will have current performance data and scrotal measurements listed week of sale, to help with your selections. The bull can be viewed anytime ahead of the sale at their respective homes. All bulls will be on display, with an open house format from Saturday Feb 10th through to sale day Tuesday Feb 13th at Royal Western Gelbvieh.

We look forward to continuing to provide you with the best bulls we can from industry leading AI sires and elite female bases. As always the bulls will be available for pre-sale viewing anytime. Come for morning coffee and doughnuts, followed by steak lunch and refreshments. Then make your 2024 Draft Picks from an excellent set of bulls.

Mark your calendars and join us Feb.13th for our fifth annual sale.

Thank you for your continued support!

Sincerely, 2024 Draft Picks Bull Sale



RR 4, Site 7, Box 28, Olds, AB T4H 1T8
Email: bohrsonmarketing@gmail.com

FIND THE CATALOGUE ONLINE AT
WWW.BOHRSON.COM



Scott Bohrsen
403-370-3010



Taylor Richards
306-821-4169



Rob Voice
306-270-6082



Martin Bohrsen
306-220-7901



Darryl Snider
780-385-5561



Jaxon Payne
306-830-0456



Jay Sibbald
403-899-2625



Cody Haney
403-845-8806

DRAFT PICKS HERD HEALTH & MANAGEMENT

Disease Prevention- Both the individual breeding programs of Rocky Top Gelbvieh and Royal Western Gelbvieh run extensive, strict herd health programs to help ensure that cattle are born healthy and stay healthy at our operations and are set up for success at yours!

Calves:

@Birth - Inforce 3 (IBR,PI3,BRSV) & Toltrazuril- Coccidiosis prevention

@Pasture Kick Out - ONCE PMH IN (mannheimia & pasteurilla), - Express 5 HS (IBR,PI3,BRSV,BVD type 1 & 2 + H-Somnus)

@Weaning - Pyramid 5 + Presponse (IBR,PI3,BRSV,BVD type 1 & 2, mannheimia & Haemolytica) - Visions 8 Somnus w/SPUR

Sale Bulls- Fusogaurd (foot rot & liver abscesses) "2 shots for all yearlings and 2 yr-olds are boosted" - Express 5 HS & Covexin Plus 8-way

Breeding Females- @ pre-calving Scour Bos 9 & 4 complete program plus Covexin Plus 8-way @ pre breeding Express 5 FP VL5 & Covexin Plus 8-way

Whole herd- Animals are dewormed and parasite control with utilization of Safe-Gaurd & Ivermectin pour on with Cylence 25-30 days apart for optimum protection.

Nutrition- Breeding Females: Our cow herds are treated and managed in a tough environment, where they need to be efficient with resources to thrive. We Do Not pamper our cows just because they are seed-stock genetics they work alongside our commercial females and are asked to thrive on the same resources. Balanced nutrition and proper mineral has always been the driving link to animal welfare and health, we take that part seriously.

Bull Development: Bull calves are weaned and transitioned slowly from pasture and momma to high fiber TMR rations, that are balanced for micro and macro nutrients. Rations are formulated to maintain modest growth, but focused on superior rumen health, structure and reproductive health! All long yearling bulls go to summer grass to develop and mature, graze late into the fall, they are fit, in shape and ready to work!

Quality Assurance & Definitions

ALL BULLS DNA TESTED BVD NEGATIVE

DNA VERIFIED AND LIFETIME PRODUCTION RECORDS

COMPLETE HERD HEALTH STANDARDS

HOMO POLLED & COAT COLOR TRACKING

EXTENSIVE AI & ET PROGRAMS

SALE BULLS BACKED BY INDUSTRY LEADING GENETICS
FROM TODAY'S TOP SIRES AND DAMS

LARGE GROUPS OF BROTHERS FOR IMPROVED CONSISTENCY



= HEIFERS RECOMMENDED

RETAINED OWNERSHIP DETAILS

RETAINING 1/2 SEMEN INTEREST - this enables the breeder(seller) to collect semen on the bull at their cost and buyers convenience. Also buyer and seller would be partners in any future semen sales.

RETAINING 1/2 POSSESSION - this enables the breeder(seller) to use the bull in a natural breeding service capacity. This is common when there is different calving seasons or back and forth rotation. Please make contact with seller regarding individual requirements for 1/2 possession bulls.

REFERENCE SIRE



RWG GUT FEELING 9429

RWG G429 | 4/10/2019 | CDGV170300 | HOMO POLLED | PB94 | Hetero Black

REFERENCE SIRE

RWG RIGHT COMBINATION 5506
RWG EXACT COMBINATION 7409
RWG HADIE 3505

RWG TOTALLY-EXPOSED 7918 ET
RWG ROXY KITTY X 0301
RWG ROXY KITTY 5030

RWG WAR ADMIRAL 2528
SLC LORA 164Y
RWG XTREME TRACTION 0521
RWG YES HADIE 1508
JRI EXTRA EXPOSURE 285L71 ET
SLC MISS HADIE 70H
JRI EXTRA EXPOSURE 285L71 ET
TSCC TWIN STAR KITTY 710K

epds

CED	BW	WW	YW	MILK	TM	CEM	STAY	DOC
9	2.0	86	123	25	68	6	14	10

carcass

YG	CW	REA	MARB	FAT
-0.06	50	0.62	0.18	-0.01

BIRTH WT: 90 | ADJ WEANING WT: 751 | ADJ YEARLING WT: 1319

- Easy fleshing, highlight 2021 sale bull
- Maternal brother to famous donor RWG Kitty's Dream 6526
- offers exceptional progeny quality with added correctness, hair & look

RWG HORSE POWER H311

RWG H311 | 03/31/2020 | CDGV173258 | HOMO POLLED | PB94 | Hetero Black

REFERENCE SIRE

CES DECKA OUTBACK 75S
SLC OUTBACK 142X
SFL SLC CUE 325P

RWG WAR ADMIRAL 2528
RWG ALLSTAR D510
PHG ALLSTAR A71

CES DECKA PRECISION 144P
CES DECKA HARPER 150L
SLC RIP 121K
SFL SCOTSWOOD SUE 214G
LCR WARNOCK 612W
RWF SEXY-KITTY 6034
RWG WHY ME 9515
VVGR MISS 089X

epds

CED	BW	WW	YW	MILK	TM	CEM	STAY	DOC
8	3.5	90	146	24	69	5	13	11

carcass

YG	CW	REA	MARB	FAT
-0.09	59	0.84	0.14	-0.01

BIRTH WT: 93 | ADJ WEANING WT: 848 | ADJ YEARLING WT: 1458

- Industry's most prolific Outback son with high demand progeny
- One of the best structured bulls, great disposition & powerfully constructed
- Progeny maximize growth, without massive mature frames, daughter are very maternal and broody. Power cattle with moderate frames and lots of maternal strength.





JRI SECRETARIAT 285E78

JRI 285E78 | 9/2/2017 | AMGV1401606 | HOMO POLLED | PB94 | Red

JRI SECRET INSTINCT 254U83
JRI SECRET SENSATION 140A43
 RI MAXXED OUT 140W32

REFERENCE SIRE

JRI POP A TOP 197T83
JRI MS PRIME STAR 285Z68
 JRI PLD NEW ELEGANCE 285G67

epds

CED	BW	WW	YW	MILK	TM	CEM	STAY	DOC
20	-2.2	71	100	20	56	11	8	10

BIRTH WT: 86 | ADJ WEANING WT: 890 | ADJ YEARLING WT: 1299

carcass

YG	CW	REA	MARB	FAT
-0.11	13	0.29	0.07	-0.01

- High selling bull in the 2019 Judd Ranch Bull Sale
- Offers exceptional body mass and fleshing ability
- Elite calving ease, low BW, awesome daughters
- Zero semen available, syndicate sire, limited genetics

RWG GRAND PLAN 9420 ET

RWG G420 | 4/6/2019 | CDGV170351 | HOMO POLLED | PB94 | Hetero Black

RWG RIGHT COMBINATION 5506
RWG EXACT COMBINATION 7409
 RWG HADIE 3505

REFERENCE SIRE

BEAS BEAS 2806Z
RWG KITTY'S DREAM 6526
 RWG ROXY KITTY X 0301

epds

CED	BW	WW	YW	MILK	TM	CEM	STAY	DOC
13	-0.8	75	113	30	67	10	18	8

BIRTH WT: 83 | ADJ WEANING WT: 871 | ADJ YEARLING WT: 1301

carcass

YG	CW	REA	MARB	FAT
-0.01	46	0.63	0.11	0.02

- Leading AI sire from the RWG Kitty's Dream 6526 donor
- Offers abundance of rib shape & growth on moderate low BW progeny
- Curve bender son of the great RWG Exact Combination 7409 Sire

RWG GUILT TRIP 9418 ET

RWG G418 | 4/6/2019 | CDGV170341 | HOMO POLLED | PB94 | Red

RWG RIGHT COMBINATION 5506
RWG EXACT COMBINATION 7409
 RWG HADIE 3505

REFERENCE SIRE

VV ZAKE 114Z
SLC SLC PARKLAND 31E ET
 SLC PARKLAND 220U

epds

CED	BW	WW	YW	MILK	TM	CEM	STAY	DOC
3	4.9	84	114	13	55	2	19	9

BIRTH WT: 87 | ADJ WEANING WT: 979 | ADJ YEARLING WT: 1492

carcass

YG	CW	REA	MARB	FAT
-0.10	39	0.73	0.13	0.00

- Use to maximize added frame, bone mass, growth and power
- Progeny have abundance of muscle shape and hair
- Ideal cross for British based cows who require added performance & better yield grades

Rocky Top Gelbvieh

RTG L116 Light Em' Up – Is an attractive feature in this year's line up! He is very clean and complete in his skull design along with an elegant elongated neckline. Following through into a smooth front third and carrying out with a deep sided rib shape and muscle tone. And! It doesn't stop there!

Light Em' Up moves out and travels soundly on a correct foot shape and flexibility. The valuable traits that stand behind RTG L116's pedigree has a lot of key features that we focus on in our program; longevity, productivity, maternal ability. With the Exact Combination combo this just proves a greater purity of this line of genetics. His dam, RTG Daisy is a maternally driven female that has proven to be profitable who time after time has given us replacement females who are productive

RETAINING 1/2 SEMEN INTEREST..



\$11,000
BARBER FARMS

RTG LIGHT EM' UP L116

RTG L116 | 1/11/2023 | CDGV185018 | HOMO POLLED | PB94 | Black

RWG EXACT COMBINATION E409
RWG GUT FEELING G429
RWG ROXY KITTY X 0301

RWG RIGHT COMBINATION C506
RWG HADIE 3505
RWG TOTALLY-EXPOSED 7918 ET
RWG ROXY KITTY 5030

RWG EXACT COMBINATION E409
RTG DAISY H113
RWG DAISY 9142

RWG RIGHT COMBINATION C506
RWG HADIE 3505
EGL PABST L011 ET
VG VALLEY MISS 52R



Homo Polled

epds

CED	BW	WW	YW	MILK	TM	CEM	STAY	DOC
10	1.8	79	105	26	65	7	15	11

carcass

YG	CW	REA	MARB	FAT
-0.09	47	0.62	-0.01	-0.02

BIRTH WT: 90 | ADJ WEANING WT: 774 | ADJ YEARLING WT: 1237



pg 7



DRAFT PICKS BULL SALE 2024

Rocky Top Gelbvieh



RTG LONELY EYES L119

RTG L119 | 1/13/2023 | CDGV185020 | HOMO POLLED | PB94 | Red

JRI SECRET SENSATION 140A43
JRI SECRETARIAT 285E78
JRI MS PRIME STAR 285Z68

JRI SECRET INSTINCT 254U83
JRI MAXXED OUT 140W32
JRI POP A TOP 197T83
JRI PLD NEW ELEGANCE 285G67



Homo Polled

JRI HALLELUJAH 246E50
RTG ALI A J201
RTG ALI A347

JRI SECRET POWERS 254C821
JRI MS HONEY 246Z10
DSP SPECIAL RESERVE 3X
RWG KOKANEE 9138

epds

CED	BW	WW	YW	MILK	TM	CEM	STAY	DOC
17	-2.5	65	87	17	50	10	5	12

carcass

YG	CW	REA	MARB	FAT
-0.05	24	0.27	0.16	-0.01

BIRTH WT: 77 | ADJ WEANING WT: 675 | ADJ YEARLING WT: 1151

RTG L119 Lonely Eyes – Has always been an attention grabber in the pen! The further you examine him; you have to really appreciate his style of smooth muscle tone and shape. You can also note his clean skull and overall balanced phenotype. RTG Lonely Eyes certainly comes to mind when discussing calving ease, but there is still an abundance of performance within. His dam RTG ALIA is a clean lined, moderate and unique female with expressive rib and udder quality. She really has done an excellent job with her first calf!

RTG LOCO L102

RTG L102 | 1/2/2023 | CDGV185006 | HOMO POLLED | PB88 | Red

RWG RIGHT COMBINATION C506
RTG GETCHA SOME
RTG MISS LILA Y222

RWG WAR ADMIRAL 2528
SLC LORA 164Y
RWG TOTALLY-EXPOSED 7918 ET
RTG ROCA 103W



Homo Polled

JRI SECRETARIAT 285E78
RTG JITTER J124
RTG B208

JRI SECRET SENSATION 140A43
JRI MS PRIME STAR 285Z68
RTG WHISTLIN' DIXIE

epds

CED	BW	WW	YW	MILK	TM	CEM	STAY	DOC
17	-5.1	51	63	15	40	8	10	8

carcass

YG	CW	REA	MARB	FAT
-0.17	14	0.31	-0.23	-0.04

BIRTH WT: 70 | ADJ WEANING WT: 643 | ADJ YEARLING WT: 1156

RTG L102 Loco - An excellent calve ease bull for a group of heifers or cows. His added muscle mass, length of body and a clean made profile, added in with a more refined bone structure look to him. His dam is a beautiful JRI Secretariat daughter, which has unique benefits of a neat tidy corrected udder, very well-balanced design cow. Expect to have a good set of pen replacement females out of Loco.

Rocky Top Gelbvieh

RTG L121 Laredo – Throughout every stage of his life, from being on pasture along side his dam through weaning time and now as you walk the bull pen, Laredo has always been a standout calf. RTG L121 offers muscling, rib expression with that touch a softness added. There really is a lot of potential in this dark red Gut Feeling son. If there's a herdsman looking to push the curve on growth and wean some solid scale busters, we feel that Laredo is the hidden gem to do just that.



\$6,500
NEIL FRANK

RTG LAREDO L121

RTG L121 | 1/13/2023 | CDGV185021 | POLLED | PB88 | Red

RWG EXACT COMBINATION E409
RWG GUT FEELING G429
RWG ROXY KITTY X 0301

RWG RIGHT COMBINATION C506
RWG HADIE 3505
RWG TOTALLY-EXPOSED 7918 ET
RWG ROXY KITTY 5030

RWG XTREME TRACTION 0521
RTG MISS DIXIE U
RTG ROCKY TOP MISS U217

RWG TRACTION 7412
VG VALLEY MISS TRIX 1571
VG VALLEY MISTER 705



epds

CED	BW	WW	YW	MILK	TM	CEM	STAY	DOC
9	2.4	74	100	25	62	3	13	10

carcass

YG	CW	REA	MARB	FAT
-0.13	41	0.56	0.25	-0.03

BIRTH WT: 92 | ADJ WEANING WT: 717 | ADJ YEARLING WT: 1142



LOT 4 DAM

Rocky Top Gelbvieh

\$12,000
JOHN PHEFFER



RTG L126 LaGrange - Where do we even start! Here is a dark dark red meat machine! LaGrange boasts a 998lb weaning weight, a 1481lb yearling weight and ranks in the top 1% for both WW and YW. His dam RTG Haven is a power builder of a female who positions high in our program. Gut Feeling has clicked in all the right ways in this mating for us. The growth and performance built into this bull is second to none. We have never been more excited to showcase this bull for the 2024 Draft Picks Sale. LaGrange really is just impressive in his powerhouse stature yet fluid design all stacked on top of his solid footing. Big nutted and clean sheathed too! When genetics just work, this is what we strive to produce from our program. We feel this bull has the opportunity to crack open a new level of productive breeding essentials for an elite breeder program.

RETAINING 1/2 SEMEN INTEREST

RTG LA GRANGE L126

RTG L126 | 1/17/2023 | CDGV185024 | HOMO POLLED | PB94 | Red

RWG EXACT COMBINATION E409
RWG GUT FEELING G429
RWG ROXY KITTY X 0301

RWG RIGHT COMBINATION C506
RWG HADIE 3505
RWG TOTALLY-EXPOSED 7918 ET
RWG ROXY KITTY 5030



Homo Polled

RWG EASY MONEY E305 ET
RTG HAVEN
RTG FINE N' DANDY

DCSF POST ROCK ASTRONAUT 157A
SLC LORA 164Y
DDGR DDGR RESILIENT 275D
RWG CHERRY 9148

epds

CED	BW	WW	YW	MILK	TM	CEM	STAY	DOC
6	4.1	94	137	27	74	4	11	12

carcass

YG	CW	REA	MARB	FAT
-0.14	41	0.62	0.01	-0.03

BIRTH WT: 98 | ADJ WEANING WT: 948 | ADJ YEARLING WT: 1481



LOT 5 DAM

Rocky Top Gelbvieh

RTG Latigo L122 - This Gut Feeling son is loaded with power and performance. RTG Latigo is backed by one of our favorite Fandango females. She has excellent feet, is clean in her make up, and continues to influence our program as a sound made, deep bodied dam. Latigo ranked 2nd highest for WW (834lb) and adj YW (1377lb) of his contemporary group. His overall length, mass, correct foot, and testicular development surely makes him among the attention getter pen favorites!



RTG LATIGO L122

RTG L122 | 1/16/2023 | CDGV185022 | HOMO POLLED | PB94 | Black

RWG EXACT COMBINATION E409
RWG GUT FEELING G429
RWG ROXY KITTY X 0301

RWG RIGHT COMBINATION C506
RWG HADIE 3505
RWG TOTALLY-EXPOSED 7918 ET
RWG ROXY KITTY 5030

JRI SECRETARIAT 285E78
RTG FANDANGO H108
DDN BELLY RIVER FANDANGO 877F

JRI SECRET SENSATION 140A43
JRI MS PRIME STAR 285Z68
HL SLC MASTERPLAN 58C
DDN 140B



Homo Polled
Hetero Black

epds

CED	BW	WW	YW	MILK	TM	CEM	STAY	DOC
11	2.0	87	130	26	70	6	12	13

BIRTH WT: 91 | ADJ WEANING WT: 777 | ADJ YEARLING WT: 1377

carcass

YG	CW	REA	MARB	FAT
-0.04	54	0.71	0.09	0.00



LOT 6 GRAND DAM



Rocky Top Gelbvieh



\$5,000
MYRON VICK

RTG LATTE L142

RTG L142 | 1/28/2023 | CDGV185031 | HOMO POLLED | PB94 | Red

RWG EXACT COMBINATION E409
RWG GUT FEELING G429
RWG ROXY KITTY X 0301

RWG RIGHT COMBINATION C506
RWG HADIE 3505
RWG TOTALLY-EXPOSED 7918 ET
RWG ROXY KITTY 5030



Homo Polled

JRI GUNG HO 282C51
RTG WESTERN GIRL
RWG ROYAL WESTERN 9211

JRI HOSS 293A43 ET
JRI MS FRANKIE 282R11
EGL PABST L011 ET
VG VALLEY MISS 17N

epds

CED	BW	WW	YW	MILK	TM	CEM	STAY	DOC
8	2.8	87	135	26	69	5	17	11

carcass

YG	CW	REA	MARB	FAT
-0.15	42	0.74	0.23	-0.02

BIRTH WT: 95 | ADJ WEANING WT: 764 | ADJ YEARLING WT: 1324

RTG Latte L142 – This homo polled dark red Gut Feeling son is definitely a more powerful big framed type bull. RTG Latte has a real clean, long spine and notable large foot size. Out of a first calf heifer, Latte weaned off at 781lbs and we certainly can't complain about that! RTG Latte will be the one that can add length and amplify frame especially for the commercial feeder calves looking for more volume.



\$5,500
ROBERT GUYNUP

RTG LAST CALL L203

RTG L203 | 2/3/2023 | CDGV185035 | HOMO POLLED | PB94 | Red

JRI SECRET SENSATION 140A43
JRI SECRETARIAT 285E78
JRI MS PRIME STAR 285Z68

JRI SECRET INSTINCT 254U83
JRI MAXXED OUT 140W32
JRI POP A TOP 197T83
JRI PLD NEW ELEGANCE 285G67



Homo Polled

KGJ HIGHLINE DRACULA 100A
RTG EMMA
RWG DAISY 9142

FLAD FLADELAND DRACULA 57Y
KGJ HIGHLINE COCOA BUSH 17L
EGL PABST L011 ET
VG VALLEY MISS 52R

epds

CED	BW	WW	YW	MILK	TM	CEM	STAY	DOC
16	1.0	76	96	23	60	9	13	12

carcass

YG	CW	REA	MARB	FAT
-0.26	32	0.78	0.17	-0.04

BIRTH WT: 94 | ADJ WEANING WT: 798 | ADJ YEARLING WT: 1244

RTG Last Call L203 – A homo polled Secretariat son that brings a lot to the scale! Although RTG Last Call is considered a calving ease bull, he does it with added growth as noted with his 798lb WW. He has that easy fleshing ability and added middle that really makes him appealing. RTG Last Call's maternal side goes back to the grandam Daisy 9142 who screams longevity with a tremendous set of feet and good clean udder underneath. She's known for strong breed back fertility and that has followed suit for Last Call's Dam Emma 7E. This upcoming herd sire will be a very productive female maker and weaning weight builder.

Rocky Top Gelbvieh

RTG Local 49 L117 - This homo polled, homo black balancer 75 bull calf is the one and only Hallelujah 246E50 son in the 2024 Draft Picks sale. RTG Local 49 is sure to sire well developed offspring with maternally driven females that can be future replacements in your program. This clean fronted thick made calf has an expressive rib shape and very well put together rear quarter making him well balanced overall. Be sure to find Local 49 on sale day!



LOT 9 DAM



RTG LOCAL 49 L117

RTG L117 | 1/11/2023 | CDGV185019 | HOMO POLLED | BA75 | HOMO BLACK



Homo Polled
Homo Black

JRI SECRET POWERS 254C821
JRI HALLELUJAH 246E50
JRI MS HONEY 246Z10

JRI SECRET INSTINCT 254U83
JRI MS POPPY LOVE 254Z72
JRI POP A TOP 197T83
JRI MS SUN DANCE 246P90

RWG ROYAL RESERVE 5066
RTG A356
4DJ SENSATIONAL BLACKBIRD 455

JRI EXTRA EXPOSURE 285L71 ET
DVE DAVIDSON MS PLD BLK 107L
HYLINE RIGHT WAY 781
LLB BLACKBIRD 173L

opds

CED	BW	WW	YW	MILK	TM	CEM	STAY	DOC
10	1.9	68	105	15	49	5	12	13

carcass

YG	CW	REA	MARB	FAT
-0.06	27	0.47	0.38	0.01

BIRTH WT: 93 | ADJ WEANING WT: 727 | ADJ YEARLING WT: 1202



Rocky Top Gelbvieh



\$4,750
CODY WOLBECK

RTG LARIAT L112

RTG L112 | 1/10/2023 | CDGV185015 | HOMO POLLED | PB94 | Red

JRI SECRET SENSATION 140A43
JRI SECRETARIAT 285E78
JRI MS PRIME STAR 285Z68

JRI SECRET INSTINCT 254U83
JRI MAXXED OUT 140W32
JRI POP A TOP 197T83
JRI PLD NEW ELEAGANCE 285G67



Homo Polled

JRI HALLELUJAH 246E50
RTG CRAZY GIRL J110
RTG crazy girl

JRI SECRET POWERS 254C821
JRI MS HONEY 246Z10
RPS APOLLO 75A
RWG DAISY 9142

epds

CED	BW	WW	YW	MILK	TM	CEM	STAY	DOC
13	-0.1	66	90	20	52	6	14	12

carcass

YG	CW	REA	MARB	FAT
-0.10	15	0.16	0.30	-0.03

BIRTH WT: 83 | ADJ WEANING WT: 698 | ADJ YEARLING WT: 1201

RTG Lariat L112 – Lariat carries a smaller frame and that can be expected of the Secretariat offspring. This moderate bull is smooth from his head shape and design, all the way down through his shoulder. Another maternally backed bull by the notable Daisy cow 9142 family that has produced a lot of our top cattle in our program year after year. RTG Lariat is very sound in his foot structure with a good disposition. Lariat has the capability to produce fertile, sound, long-lasting progeny.



\$6,500
SHAUN SOPPIT/HANN

RTG LATER RON L214

RTG L214 | 2/27/2023 | CDGV185042 | HOMO POLLED | PB94 | Black

RWG EXACT COMBINATION E409
RWG GUT FEELING G429
RWG ROXY KITTY X 0301

RWG RIGHT COMBINATION C506
RWG HADIE 3505
RWG TOTALLY-EXPOSED 7918 ET
RWG ROXY KITTY 5030



Homo Polled
Hetero Black

DDN EXTRA CLASSY 760E
RTG HOLLIE
RTG ALI A347

RWG ALI 3539
DDN BELLY RIVER YES MAN 178Y
DSP SPECIAL RESERVE 3X
RWG KOKANEE 9138

epds

CED	BW	WW	YW	MILK	TM	CEM	STAY	DOC
10	3.0	83	126	24	66	5	17	9

carcass

YG	CW	REA	MARB	FAT
-0.17	40	0.74	0.24	-0.02

BIRTH WT: 76 | ADJ WEANING WT: 750 | ADJ YEARLING WT: 1229

RTG Later Ron L214 A phenotypic standout who has such depth to him and lots of guts under his spring of rib. The fleshing ability and extra dimension through his center 1/3 are what we breed for. This is granted from his powerful dam RTG H17 who has a large rib expression herself and correct hip design. RTG Later Ron has been consistent in his growth and development and really is a sound mobile bull. When you take him out to pasture you can say "see ya Later Ron!".

RETAINING 1/2 SEMEN INTEREST



LOT 11 DAM

Rocky Top Gelbvieh

RTG Locked N' Loaded L125 – What an impressive Gut Feeling son! A balanced, muscled, structured bull all while keeping it clean and tidy in a square body shape. RTG Locked N' Loaded is out of a big framed power cow backed by the Royal Reserve on the top side and the Goodnight cow family on the bottom side. I think that says it all for itself! This is just one of those mating's that has proven time and time again to produce offspring that has what it takes to generate profit. This is an excellent return on investment breeding piece!



RTG LOCKED N' LOADED L125

RTG L125 | 1/17/2023 | CDGV185023 | HOMO POLLED | PB94 | HOMO BLACK

RWG EXACT COMBINATION E409
RWG GUT FEELING G429
RWG ROXY KITTY X 0301

RWG RIGHT COMBINATION C506
RWG HADIE 3505
RWG TOTALLY-EXPOSED 7918 ET
RWG ROXY KITTY 5030

RWG ROYAL RESERVE 5066
RTG MISS NIGHT TRIX Y216
RWG GOOD NIGHT TRIX 9147

JRI EXTRA EXPOSURE 285L71 ET
DVE DAVIDSON MS PLD BLK 107L
VG VALLEY MISTER 68N ET
VG VALLEY MISS TRIX 157T



Homo Polled
Homo Black

epds

CED	BW	WW	YW	MILK	TM	CEM	STAY	DOC
7	3.4	76	107	23	60	61	15	11

carcass

YG	CW	REA	MARB	FAT
-0.09	55	0.68	-0.10	-0.02

BIRTH WT: 97 | ADJ WEANING WT: 784 | ADJ YEARLING WT: 1263



pg 15

DRAFT PICKS BULL SALE 2024

Rocky Top Gelbvieh

**5,000
DON AND
DUSTIN MCMANN**



RTG LOOPER L213

RTG L213 | 2/18/2023 | CDGV185041 | HOMO POLLED | PB94 | Black



Homo Polled
Hetero Black

JRI STAR GENERAL 254F833 ET
DDN 1206J
DDN 863F

JRI HALLELUJAH 246E50
RTG FAR OVER YOU J112
RTG FAR OVER YOU

JRI SECRET INSTINCT 254U83
JRI MS POPPY LOVE 254Z72
DVE DAVIDSON MCGRAW 165D
DDN 134B

JRI SECRET POWERS 254C821
JRI MS HONEY 246Z10
DDGR DDGR RESILIENT 275D
RWG SMOCK 9140

epds

CED	BW	WW	YW	MILK	TM	CEM	STAY	DOC
20	-1.4	61	76	19	49	10	18	13

carcass

YG	CW	REA	MARB	FAT
-0.08	14	0.28	0.18	-0.01

BIRTH WT: 70 | ADJ WEANING WT: 693 | ADJ YEARLING WT: 1126

RTG Looper L213 – A hetero black, homo polled calving ease bull that comes with an exceptional smooth made design. Sired by 1206J who was purchased from the 2022 Nelson Gelbvieh Bull Sale has moderated his offspring but more importantly enforced the calving ease trait into his calves. With a calving ease of a whopping 20 and a -1.4 BW, RTG Looper has met and exceeded that expectation of his sire 1206J. Here's a sound, easy keeping little package!

RTG LONGVIEW L140

RTG L140 | 1/27/2023 | CDGV185030 | POLLED | PB94 | Black



Hetero Black

RWG EXACT COMBINATION E409
RWG GUT FEELING G429
RWG ROXY KITTY X 0301

DDN DRIVER 133D
DDN 04H
DDN 88B

RWG RIGHT COMBINATION C506
RWG HADIE 3505
RWG TOTALLY-EXPOSED 7918 ET
RWG ROXY KITTY 5030

JRI PETERBILT 282B31 ET
DDN 16A
STON XPLOSIVE 5X
DDN BELLY RIVER X-GIRL 103X

epds

CED	BW	WW	YW	MILK	TM	CEM	STAY	DOC
12	0.1	87	128	24	67	5	12	13

carcass

YG	CW	REA	MARB	FAT
-0.15	62	0.90	0.24	-0.03

BIRTH WT: 84 | ADJ WEANING WT: 732 | ADJ YEARLING WT: 1452

RTG Longview L140 – Power and pounds! RTG Longview is one good looking performance type bull. This Gut Feeling son crossed on a DDN Nelson female is heavy muscled from top to bottom that combines leading growth genomics from both his paternal and maternal lines. There is absolutely no doubt that he will add pounds into his offspring!



Rocky Top Gelbvieh

RTG Longshot L101 – Loaded with capacity and bold muscle shape, this fluid moving bull is one to take a peek at. He might not be the longest bodied bull in the pen but he packs a punch with what he's got. His dam is a highly productive deep ribbed female that is clean and correct and you can find these characteristics in RTG Longshot. This is a bull that we've become rather fond of especially for his powerful stature, good hair growth and testicular development.



RTG LONGSHOT L101

RTG L101 | 1/2/2023 | CDGV185005 | HOMO POLLED | PB88 | Red

RWG EXACT COMBINATION E409
RWG GUT FEELING G429
RWG ROXY KITTY X 0301

RWG RIGHT COMBINATION C506
RWG HADIE 3505
RWG TOTALLY-EXPOSED 7918 ET
RWG ROXY KITTY 5030

DDN 41D
RTG F315
RTG MISS DIXIE U

BEA 442B ET
JAB ALEXANDRA 3315
RWG XTREME TRACTION 0521
RTG ROCKY TOP MISS U217



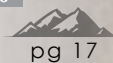
epds

CED	BW	WW	YW	MILK	TM	CEM	STAY	DOC
8	3.5	83	124	24	65	4	15	8

carcass

YG	CW	REA	MARB	FAT
0.04	40	0.20	0.09	-0.01

BIRTH WT: 96 | ADJ WEANING WT: 776 | ADJ YEARLING WT: 1300



DRAFT PICKS BULL SALE 2024

Rocky Top Gelbvieh

OUT



RTG Licensed to Chill L131 – This is a flashy, clean lined and well-maintained Gut Feeling son. Not only is he good looking, but he's also highly maternally driven who should sire many daughters that will be retained. RTG Licensed to Chill is backed by a good quality sustainable cow. This moderate power-packed growth package will be sure to throw pounds and produce top end replacements.



RTG LICENSED TO CHILL L131

RTG L131 | 1/22/2023 | CDGV185025 | HOMO POLLED | PB94 | Black

RWG EXACT COMBINATION E409
RWG GUT FEELING G429
RWG ROXY KITTY X 0301

RWG RIGHT COMBINATION C506
RWG HADIE 3505
RWG TOTALLY-EXPOSED 7918 ET
RWG ROXY KITTY 5030



Homo Polled
Hetero Black

DDGR DDGR RESILIENT 275D
RTG HARD CRUSH
RTG girl crush

CCRO CAROLINA LEVERAGE 3214A
DDGR 129Z
RPS APOLLO 75A
VG VALLEY MISS BJ 32S

epds

CED	BW	WW	YW	MILK	TM	CEM	STAY	DOC
7	2.8	82	118	25	66	4	12	9

carcass

YG	CW	REA	MARB	FAT
-0.20	57	0.89	0.20	-0.05

BIRTH WT: 93 | ADJ WEANING WT: 795 | ADJ YEARLING WT: 1241

Rocky Top Gelbvieh

RTG LIMIT L134

RTG L134 | 1/25/2023 | CDGV185026 | POLLED | PB94 | Red

RWG EXACT COMBINATION E409
RWG GUT FEELING G429
RWG ROXY KITTY X 0301

RWG RIGHT COMBINATION C506
RWG HADIE 3505
RWG TOTALLY-EXPOSED 7918 ET
RWG ROXY KITTY 5030

RWG XTREME TRACTION 0521
RTG B480
VG VALLEY MISS TANSY 56T

RWG TRACTION 7412
VG VALLEY MISS TRIX 157T
VG VALLEY MISTER 68N ET
VG VALLEY MISS 72R



epds

CED	BW	WW	YW	MILK	TM	CEM	STAY	DOC
15	-1.5	65	88	23	56	7	12	12

carcass

YG	CW	REA	MARB	FAT
-0.14	30	0.59	0.31	-0.01

BIRTH WT: 87 | ADJ WEANING WT: 710 | ADJ YEARLING WT: 1172

RTG Limit L134 – If you're looking for tonnes of hair, Limit has just that! This clean skulled, solid built bull has the desired depth and sogginess to him. Backed by a clean fronted and moderate framed Xtreme Traction cow, there are productive, reliable, profitable genetic traits in this Gut Feeling son. RTG Limit will add the correct amount of structure, power, and size that the commercial cattle herds could benefit from.



LOT 18 DAM



\$5,000
LES WEIBE

RTG LABATT L103

RTG L103 | 1/3/2023 | CDGV185007 | POLLED | PB94 | Red

RWG EXACT COMBINATION E409
RWG GUT FEELING G429
RWG ROXY KITTY X 0301

RWG RIGHT COMBINATION C506
RWG HADIE 3505
RWG TOTALLY-EXPOSED 7918 ET
RWG ROXY KITTY 5030

DDN 129B
RTG RESERVES EMPRESS
RTG MS RESERVE A319

STON XPLOSIVE 5X
DDN BELLY RIVER WINDY 924W
DSP SPECIAL RESERVE 3X
RWG CHERRY 9148



epds

CED	BW	WW	YW	MILK	TM	CEM	STAY	DOC
10	2.2	65	94	23	56	5	17	12

carcass

YG	CW	REA	MARB	FAT
-0.26	40	0.76	0.07	-0.06

BIRTH WT: 95 | ADJ WEANING WT: 704 | ADJ YEARLING WT: 1201

RTG Labatt L103 – This long sided, dark red bull calf has some kicker performance numbers behind him. With a weaning weight of 823lbs and a yearling weight of 1201lb, RTG Labatt is packed with power. Backed by a great cow, RTG 17E is one that just gets things done when it comes to raising a calf. She carries herself with proper frame structure, foot quality and udder correctness. Longevity is built into this bull and so is that capability to add pounds and size into the replacement pen.



LOT 19 DAM

pg 19



\$5,500
KEN CONGDON

Rocky Top Gelbvieh



RTG LUSTER L207

RTG L207 | 2/10/2023 | CDGV185038 | HOMO POLLED | PB94 | Red

RWG EXACT COMBINATION E409

RWG GUT FEELING G429

RWG ROXY KITTY X 0301

RWG RIGHT COMBINATION C506

RWG HADIE 3505

RWG TOTALLY-EXPOSED 7918 ET

RWG ROXY KITTY 5030

20

DDN 129B

RTG F205

RTG girl crush

STON XPLOSIVE 5X

DDN BELLY RIVER WINDY 924W

RPS APOLLO 75A

VG VALLEY MISS BJ 32S



Homo Polled

epds

CED	BW	WW	YW	MILK	TM	CEM	STAY	DOC
10	1.8	67	93	26	59	3	17	11

carcass

YG	CW	REA	MARB	FAT
-0.18	33	0.70	0.20	-0.02

BIRTH WT: 97 | ADJ WEANING WT: 727 | ADJ YEARLING WT: 1219

RTG Luster L207 – This eye appealing bull has simply been a standout all along. Incredibly clean in his lines, thick made, with depth that is complete right through into his rear quarter and stifle. RTG Luster really gets out and travels and covers ground. His dam RTG F205 has been a productive female producing strong repetitive sale females and top end bulls. A sale offering that is well balanced and will not disappoint!



RTG LAS VEGAS L138

RTG L138 | 1/27/2023 | CDGV185028 | HOMO POLLED | PB94 | Black

JRI SECRET SENSATION 140A43

JRI SECRETARIAT 285E78

JRI MS PRIME STAR 285Z68

JRI SECRET INSTINCT 254U83

JRI MAXXED OUT 140W32

JRI POP A TOP 197T83

JRI PLD NEW ELEGANCE 285G67



Homo Polled
Hetero Black

KGJ HIGHLINE DRACULA 100A

RTG ELSA

VG VALLEY MS BLACKHILLS 58T

FLAD FLADELAND DRACULA 57Y

KGJ HIGHLINE COCOA BUSH 17L

VG VALLEY MISTER 68N ET

VG VALLEY MISS 25R

epds

CED	BW	WW	YW	MILK	TM	CEM	STAY	DOC
17	1.1	62	89	21	51	8	14	10

carcass

YG	CW	REA	MARB	FAT
-0.07	33	0.47	0.23	-0.01

BIRTH WT: 95 | ADJ WEANING WT: 690 | ADJ YEARLING WT: 1260

RTG Las Vegas L138 – RTG Las Vegas profiles a nice head shape, clean front and smooth made shoulder. Following a very consistent middle rib that completes with overall structure and rounds out with an excellent hair coat. Las Vegas will give that calving ease advantage, yet still have a respectable calf crop in the fall. His dam RTG 5E is feminine in her make up with a finer made frame and very well put together udder and teat conformation. This Secretariat son will continue to refine udders and build a solid set of replacements.

Rocky Top Gelbvieh

RTG LIME LIGHT L137

RTG L137 | 1/26/2023 | CDGV185027 | HOMO POLLED | PB94 | Black



Homo Polled
Hetero Black

RWG EXACT COMBINATION E409
RWG GUT FEELING G429
RWG ROXY KITTY X 0301

DDN EXTRA CLASSY 760E
RTG HIGHER TRIX
RTG B360

RWG RIGHT COMBINATION C506
RWG HADIE 3505
RWG TOTALLY-EXPOSED 7918 ET
RWG ROXY KITTY 5030

RWG ALI 3539
DDN BELLY RIVER YES MAN 178Y
RWG XTREME TRACTION 0521
RWG GOOD NIGHT TRIX 9147

epds

CED	BW	WW	YW	MILK	TM	CEM	STAY	DOC
15	-0.9	76	108	26	63	6	19	8

carcass

YG	CW	REA	MARB	FAT
-0.02	49	0.50	0.26	-0.01

BIRTH WT: 75 | ADJ WEANING WT: 755 | ADJ YEARLING WT: 1343

RTG Lime Light L137 – This is a long smooth made bull that you can appreciate for his cleanliness up front and following through with his soft muscle pattern. RTG Lime Light is a really sound, easy keeping package that has a calving ease feature. RTG Lime Light has an incredible growth curve already and we only expect that to continue as he further develops. This is a docile maternal package!



RTG LIT L202

RTG L202 | 2/3/2023 | CDGV185034 | HOMO POLLED | PB94 | HOMO BLACK



Homo Polled
Homo Black

RWG EXACT COMBINATION E409
RWG GUT FEELING G429
RWG ROXY KITTY X 0301

DDN 129B
RTG MISS
VG VALLEY MISS BJ 325

RWG RIGHT COMBINATION C506
RWG HADIE 3505
RWG TOTALLY-EXPOSED 7918 ET
RWG ROXY KITTY 5030

STON XPLOSIVE 5X
DDN BELLY RIVER WINDY 924W
VG VALLEY BLACKJACK JR 37H
VG VALLEY PLD VIOLA 63K

epds

CED	BW	WW	YW	MILK	TM	CEM	STAY	DOC
9	1.7	74	109	26	63	6	16	11

carcass

YG	CW	REA	MARB	FAT
-0.08	50	0.66	0.15	v

BIRTH WT: 98 | ADJ WEANING WT: 770 | ADJ YEARLING WT: 1336

RTG Lit L202 – The genetic advancement of Gut Feeling on 4129B Daughters has just created an outstanding set of progenies. This tried and true well planned out mating has just turned out GOOD especially with these Gut Feeling Sons. RTG Lit is another well put together bull given that clean head, solid stature that carries mass while being an easy keeping bull. Lit L202 will add a touch of performance and above breed average carcass quality to really make some good feeder cattle and superior replacement females.



The 2024 edition of the Draft Picks represents the 5th year and we could not be more proud of the opportunity this event has provided our operations to make so many industry related contacts. As we all learn, it's truly a privilege to be in the seed-stock industry and it's a people business. We have been blessed to create so many lasting friendships and partnerships around the world because of what we do @ both RTG and RWG. It's at this moment we want to share how much of a privilege it is to farm & ranch with our family's. Plain and simply, neither operation would be where we are today without the support, knowledge, shared passion, and blunt honesty from our dads. To us, they are elite level, well respected herdsman, that do so much to keep everything at home exceptionally well managed whether we're on the road, at shows, events, sales, delivering bulls or just day to day management and PR work. They are great mentors, leaders and influences in both breeding programs.



CDC Farms

Dale has been a massive influence within the development of RTG. As most cattlemen know, Dale has a critical eye for cattle and a passion for all things farming. He's a positive influence in herd sire selection, heifer development, and, most importantly, provides one of the best sets of commercial mommas that work alongside the purebred cows, thus always setting the bar higher for the purebred cows to keep pace. Dale's commercial replacement heifers in the sale says everything you need to know and if you want a great opinion on the bulls or just a genuine farm oriented conversation call Dale, he's always found and identified the best bulls in the offering and is always ready for a good visit.

4DJ Farms Ltd

Harvey's passion for agriculture is evident in every conversation, whether it's his elite Angus genetics, soil microbiology, or advanced cropping concepts, they all stem back to soil health. Soil health is plant health and that's herd health! He has become an industry mentor in agriculture's ever changing production systems and technology. Harvey's dedication to a small but elite group of purebred Angus cows, keeps the internal competition high in terms of quality genetics and pushes us to step up and strive to be better every year. His knowledge of soil and plant health shines through as he develops all of the breeding heifers. One look into our program and you can see, yearly, the quality and production coming from our first calf heifers and young cows.

Thank You!





3 BLACK COMMERCIAL HEIFERS

Tag #'s 314, 350, 354 - Born Jan-Feb

COMMERCIAL HEIFER VIDEOS ON LIVEAUCTIONS.TV

CDC Farms is very proud to offer another great set of commercial heifers to the 2024 Draft Picks Sale. There are two groups of Gelbvieh influenced commercial F1 heifers. These particular females on offer are from a strong maternal based program that has been built over three decades focussing on foot structure, udder quality, functionality and productivity to ensure profitable weight gain on steers and well-rounded replacement females. CDC Farms focuses on a complete herd health management protocol. At birth these females receive their Naselgen, Tottrazuril, Selenium and Vitamin ADE shots. Once they reach three months of age leading to pasture kick out, they receive their Bovishield Gold One Shot and Ultrabac 7/Somubac. As the fall run hits when calves become weaned, a booster of Bovishield Gold One Shot and Ultrabac 7/Somubac is re-introduced. Once the calves are weaned and on feed, they are fed a nutritionally balanced total mixed ration to ensure proper growth and development into sound, fertile females. All of the heifers are vet checked and palpated prior to breeding season. The commercial program at CDC Farms strives to raise the next best productive and profitable line of females to focus on continually raising top end steers but more importantly, to raise quality functional cattle that work in today's beef industry.

CDC Farms would like to thank the 2023 Commercial Heifer buyers for there purchases: Commercial Lot 1 Cody Wolbeck and Commercial Lot 2 Hills Down Gelbvieh

CDC FARMS :: Dale Congdon :: 403 350 9830



3 BLACK COMMERCIAL HEIFERS

Tag #'s 300, 361, 360- Born Jan-Feb



A HUGE THANK YOU TO ALL OF OUR PAST BUYERS

4W Farms	Darren & Crystal Hann,	Justin & Brandi Vetter	Pat Walsh
AGR Farms	Shaun Soppitt	K. Congdon Farms	Peterosa
Anchor P Farms	Darwin Berg	Katie Michaelchuk	Pin to Point Gelbvieh
Andrew Kirk	Don Ewanicke	Kelly Cardinal	Plus One Cattle Company
Arnaldo Elias- Rancho El	Donald McMann	Ken Homeniuk	Prairie Hills Gelbvieh
Tapiro	Doug & Rita Cox	Ketterling Gelbvieh	Quinn Harder
B & R Ranch	Eugene Nichols	Kevin Bennett	Rancho Agualinda
Barwick Gelbvieh	Frontier Prairie Farms	Kicking Horse Ranch	RJ Genetics
Beastrom Ranch	Gary & Shelly Rusaw	LC Cattle- Barry Davisson	Rocky Top Gelbvieh
Black Poplar Ranch	George Simpson	Len Lawrence	RPS Gelbvieh
BNH Livestock	Green Acres Cattle Co	Len Kohlman- Leoleen	Rumfeldt Farms
Brian Fletcher	Gustin's Diamond D	Gelbvieh	Rusty Nichols
Brian Hrdlicka	Handel Farms	Lennor Farms	Severtson Land & Cattle
Brittain Farms	Harvey Goetz	Lorne Conrad	Silver Line Farm
Butler Creek Farms	Haustein Farms	Lucas & Amanda	Split Creek Ranch
Cameron Suominen	High Country Acres	Vangsness	Steve May
CDC Farms	Hillsdown Gelbvieh	Lyle Jones	Steven Terry
Chimney Butte Ranch	HMR Livestock	Lyle Morgenstern	Sword Farms
Cody Milliken	Ian Koester	Mari-Anne Wiebe	Tanner & Michelle Lawton
Cody Wolbeck	Ivers Cattle Company	Matthew Fuller	Tim Fuller
Cory Marshall	Janzen Gelbvieh	Mayton Farms Inc	TJB Gelbvieh
Covington Gelbvieh	Jayden Bettcher	Melissa Burton	Tony & Kathy Kamlah
Cowlick Ranch	Jeff Anderson	Milliken Farms	Trevor Neuls
Cranview Gelbvieh	Joey Davis- 16 Tons	Moe Gelbvieh	Wes Newton
Crooked Creek Cattle Co	Gelbvieh	Myron Vick	Williams Gelbvieh Farm
Dan Roth	John Pfeffer	Nelson Gelbvieh	
Danny Brown	Judd Ranch Inc	Nowack Cattle Co	





Join Us For
STEAK LUNCH
11:30 AM

SALE TIME
1:00 PM
MST



4DJ Farms LTD

RWG LIBERTY LIMITS L101

RWG 101L | 01/27/2023 | BPRS1456419 | HOMO POLLED | SIMM/ANGUS | Black

R PLUS YUMA 9087G
RF NO LIMITS 1112J
RUST MISS 6217D

R PLUS 5015C
MISS R PLUS 3007A
WS STEPPING STONE B44
TNT MISS W31



Homo Polled
Simm Angus

BAR-H MINDBENDER 141D
BAR H TIBBIE 129F
BAR-H TIBBIE 31C

S SUMMIT 956
HF TIBBIE 93U
BAR-H CROSSFIRE 63A
BAR-H HOPE 1A

epds

CED	BW	WW	YW	MILK	TM	CEM	STAY	DOC
12.1	0.5	91.8	146.0	25.0	-	5.0	8.3	16.7

carcass

YG	CW	REA	MARB	FAT
-	58.7	0.69	0.31	-0.01

BIRTH WT: 96 | ACT WEANING WT: 942 | ACT YEARLING WT: 1331

Here is the stud Sim-Angus bull, not just because he's an absolute chunk of a bull, but also, one of industries finest pedigrees. Sired by RF No Limits 1112J, whose progeny this fall were admired and well received. They are long, stout and correct. His dam, Bar H Tibbie 129F, is what sets him apart from the crowd. She was the high selling Angus female at the R Plus dispersal, this meat wagon also raised a \$2 000 Sim Angus heifer last year and was flushed 4 times for a pile of embryo's for her owners. Tibbie is also back in calf and due at the front of our calving interval. She's a sweet cow and Liberty also got that gene as he loves attention and is extremely respectful and chill all the time. A great Jr. sire prospect that can add pounds, improve female quality and all too importantly, add exceptional disposition.

\$5,000
TANNER LAWTON

LOT 24 DAM

RJH LANDMARK JOHNNY 1L

RJH 1L | 4/2/2023 | 2336830 | HOMO POLLED | Angus | Black

YOUNG DALE ZIKOMO 35B
JAYMARANDY SWEET JOHNNY 756E
YOUNG DALE GRACE 169B

YOUNG DALE ZIKOMO 79ZSFL SFL
YOUNG DALE POLLYANNA 22P
PF HOOVER DAM 04
YOUNG DALE GRACE 107W



Homo Polled
Black Angus

DAINES WHISKEY 39E
DAINES MISS BLACKCAP 8G
DAINES MISS BLACKCAP 45E

DAINES TIGER KING 26B
DAINES MISS EVENING TINGE 61C
FF NORTH WIND C7
DAINES MISS BLACK CAP 11C

epds

CED	BW	WW	YW	MILK	TM	CEM	STAY	DOC
3.0	2.0	55	95	25	-	6.0	-	-

carcass

YG	CW	REA	MARB	FAT
-	-	-	-	-

BIRTH WT: 85 | ADJ WEANING WT: 853 | ADJ YEARLING WT: 1255

Landmark Johnny 1L has created a lot of excitement since the day he hit the ground. He developed that heard bull look at a very young age and has never missed a beat. He is deep ribbed, soggy made and has got so much shape and muscle through his hind quarter. He's got calving ease on his side, but packs a serious punch when it comes to performance, rounding out at 850 lb at weaning. Johnny's got a lot to offer and will certainly move a program forward.

\$5,000
MYRON VICK

DAM OF LOT 25

4DJ KOOL TINGE 211K

HDKJ 211K | 4/20/2022 | 2259892 | HOMO POLLED | ANGUS | Black



Homo Polled
Black Angus

opds

CED	BW	WW	YW	MILK	TM	CEM	STAY	DOC
4.0	1.6	54	94	33	-	8.0	-	27

BIRTH WT: 94 | ACT WEANING WT: 705 | ACT YEARLING WT: 1407

4DJ Kool Tinge 211K is an absolute eye catcher and always has been. His sire was a standout at U2 and we were fortunate to utilize him as a walking sire for a year. He added lots of hair, a touch of added bone, and most importantly easy keeping performance cattle with great dispositions. Kool Tinge's dam is the result of an embryo purchase from Hamilton Farms, combining the famous Musgrave Stunner 316 with HF Evening Tinge 294X. She's a producer, and yet again in the young bull pen, the best of the Angus bulls comes from Evening Tinge 901G. Kool Tinge combines a lot of the breeds leading sire lines and is layered with top notch donors. A very high quality Angus sire with a bright future.

COLEMAN CHARLO 0256
S A V BLACKCAP MAY 4136
RED BAR-E-L APPROVAL 4L
RED U-2 ANEXA 5F

MUSGRAVE 316 STUNNER
4DJ EVENING TINGE 901G
HF EVENING TINGE 294X

carcass

YG	CW	REA	MARB	FAT
-	-	-	-	-



LOT 26 GRAND DAM



\$10,000
CDC FARMS

4DJ KAHLUA 213K

HDKJ 213K | 4/20/2022 | UNREGISTERED | POLLED | BALANCER | Black



Hetero Polled

opds

CED	BW	WW	YW	MILK	TM	CEM	STAY	DOC
-	-	-	-	-	-	-	-	-

BIRTH WT: 87 | ACT WEANING WT: 714 | ACT YEARLING WT: 1231

Kahlua 213K is a perfect balanced blend of the power and maternal strengths that Guilt Trip brings, combined with the massive tank of a momma HDKJ 715 is. She's one of those deep, soggy, big ribbed, big hipped cows that enjoys her time in the open field chewing her cud when the winds blowing at -40C. Our cows are all demanded to work for us and 715 is right at the top of that criteria! Their diet is based on a lot of straw over the winter, they have shelter in the tree line to bed down if they choose, and they work in the snow and wide open field all winter. With a working momma like his and some solid hybrid vigor - 213K easily makes the bull pen.

RWG EXACT COMBINATION E409
RWG GUILT TRIP G418 ET
SLC PARKLAND 31E ET

RWG BUSTIN STONES 4603
ANGUS COW - HDKJ 715E
HDKJ 224Z

carcass

YG	CW	REA	MARB	FAT
-	-	-	-	-



\$5,000
DALE OLIVER

Royal Western Gelbvieh



RWG KENNY K301

RWG K301 | 3/9/2022 | CDGV179346 | HOMO POLLED | PB94 | Red

DVE DAVIDSON MACON 111C
DRT LONESOME CAIRO 230H
DRT LONESOME DANIELLE 150F

PHG BLACK MAC Z13
DVE DAVIDSON MS NAVAHO 56A
DVE DAVIDSON SAM 16D
DRT LONESOME GOOD TIME GIRL



RWGK ERNIE E429
DDN 077H
DDN 740E

JRI GUNG HO 282C51
RWG TANGERINE XPRESS 0525
RWG BUSTIN' STONES 4603
DDN 140B

epds

CED	BW	WW	YW	MILK	TM	CEM	STAY	DOC
17	-1.4	63	85	25	56	9	24	11.2

carcass

YG	CW	REA	MARB	FAT
-0.17	18	0.55	0.2	-0.01

BIRTH WT: 74 | ADJ WEANING WT: 780 | ADJ YEARLING WT: 1208

A solid red herd sire with lots of calving ease and a -1.5 BW. Backed by a solid donor dam, DDN 077H. A beautiful, big bodied direct RWGK Ernie E429 daughter. Ernie daughters are good structured, powerful females with nice teat and udder quality. DDN 077H rises to the top of that sire group adding a lot of long term maternal value to RWG Kenny 2301 and sired by DRT Cairo 230H, who moderates frame, improves structure and has proven to offer excellent calving ease. A high quality calving ease and maternal orientated sire.



Royal Western Gelbvieh

Keg Party K429 just stands out in the bull pen. A great disposition elite sire prospect. Phenotypically he's one of the sharpest looking bulls. One of the nicest headed bulls, with a bold rib and piles of natural muscle on top of a very solid structure and foot quality. Genomics rank Keg Party in the top 3% for WW; Top 2% YW; Top 3% milk; Top 10% TM; Top 15% Docility; Top 2% CW; Top 15% Marbling.

He is elite, and its no surprise he is another Horsepower son, with RWG Kitty 8414 on the bottom side. He has a full sister in the replacement pen and she is one of the very few heifer calves that we have no intentions of selling because she is that cool.

RETAINING 1/2 SEMEN INTEREST



RWG KEG PARTY K429

RWG K429 | 4/13/2022 | CDGV179459 | HOMO POLLED | PC88 | Black



SLC OUTBACK 142X
RWG HORSE POWER H311
RWG ALLSTAR D510

JRI SANTIAGO 37C31
RWG KITTY F414
RWG KITTY D525

CES DECKA OUTBACK 755
SFL SFL SLC SUE 325P
RWG WAR ADMIRAL 2528
PHG ALLSTAR A71

JRI TOP PRODUCER 282Z3
JRI MS BLACK IMPULSE 37Z3
BEAS BEAS 2806Z
RWG KITTY 4512

epds

CED	BW	WW	YW	MILK	TM	CEM	STAY	DOC
8.5	2.5	83	127	28	69	6	12.1	12.6

carcass

YG	CW	REA	MARB	FAT
-0.01	48	0.6	0.28	0.01

BIRTH WT: 97 | ADJ WEANING WT: 764 | ADJ YEARLING WT: 1260



LOT 29 SIBLING



LOT 29 SIRE

Royal Western Gelbvieh



10,000
KEVIN DALBALCON



LOT 30 FULL SISTER



\$6,250
JUSTIN VETTER



LOT 31 DAM

RWG KISS THIS K430

RWG K430 | 4/14/2022 | CDGV179479 | HOMO POLLED | PB94 | HOMO BLACK



Homo Polled
Homo Black

SLC OUTBACK 142X
RWG HORSE POWER H311
RWG ALLSTAR D510

RWG ENTITY E308 ET
RWG GOODNIGHT G508
RWG YOUR GOODNIGHT 1539

CES DECKA OUTBACK 755
SFL SFL SLC SUE 325P
RWG WAR ADMIRAL 2528
PHG ALLSTAR A71

RWG BLOWIN' MINDS 4402
SLC LORA 164Y
RWG TEXAS WORTH 9223
ULL TWILIGHT 5T ET

epds

CED	BW	WW	YW	MILK	TM	CEM	STAY	DOC
10	3.5	80	126	24	63	6	13.5	9.2

carcass

YG	CW	REA	MARB	FAT
-0.19	40	0.89	0.1	-0.01

BIRTH WT: 92 | ADJ WEANING WT: 760 | ADJ YEARLING WT: 1249

One of the sharpest, cleanest designed Horsepower sons in the entire sale. From a young calf, he's always had that added style and presence. His full sister was one of the highlight females at the Gathering selling to Doug Meng, KS, for \$12 000. Backed by a prolific dam that's as clean made and sharp as any cow, yet massive in her body. To add her near perfect foot and udder quality, she's a program favorite. Kiss This 2430 is a sire that can add performance targeted at weaning to increase payable pounds, yet leave behind a set of efficient, moderate daughters that will add more profit value than most sires can achieve. A true balanced sire that's great structured, stout made, with a great disposition.

RWGW KINGPIN K403

RWGW K403 | 4/2/2022 | CDGV179485 | HOMO POLLED | PB94 | Black



Homo Polled
Hetero Black

SLC OUTBACK 142X
RWG HORSE POWER H311
RWG ALLSTAR D510

SLC VIPER 7E
SLC ZOE 85G ET
RWG JT ZOE 2604

CES DECKA OUTBACK 755
SFL SFL SLC SUE 325P
RWG WAR ADMIRAL 2528
PHG ALLSTAR A71

SLC VELOCITY 14C
SLC TOASTY 10C
LCR WARNOCK 612W
RWG JASMINE'S CRAZY X 0303

epds

CED	BW	WW	YW	MILK	TM	CEM	STAY	DOC
8.7	1	70	106	25	60	5	14.1	11.2

carcass

YG	CW	REA	MARB	FAT
-0.08	42	0.67	0.41	0

BIRTH WT: 94 | ADJ WEANING WT: 736 | ADJ YEARLING WT: 1285

Kingpin K403 is a long bodied, big topped son of Zoe 85G who always transmits a touch of added body length and thick progeny. Kingpin is sired by Horsepower 0311 who is a sire that just does so many things right. Hair, bone, mass, fleshing ability, and so industry relevant. His full sister is in the replacement pen, she is deep, fuzzy and stout- the type you want a whole pen of. Kingpin would work exceptionally well a set of British based cows, use him to maximize heterosis and hybrid vigor and he could be quite a profitable bull.

Royal Western Gelbvieh

RWGW KA-POW K409

RWGW K409 | 4/7/2022 | CDGV179481 | HOMO POLLED | BA75 | Black

RWG EXACT COMBINATION E409
RWG GRAND PLAN G420 ET
RWG KITTY'S DREAM D526

RWG RIGHT COMBINATION C506
RWG HADIE 3505
BEAS BEAS 2806Z
RWG ROXY KITTY X 0301



Homo Polled
Hetero Black

DFCC 15C EL CONCORD 44E
JM JM GRACIE 25G
JM JM DREAM ON 1D

DFCC 36Z CAPITAL 15C
POPLAR MEADOWS ANNIE K 5'12
JOE THIRD EDITION 423Z
DF RISING STAR 48R

epds

CED	BW	WW	YW	MILK	TM	CEM	STAY	DOC
15.1	0.6	81	126	23	63	10	14.9	9.9

carcass

YG	CW	REA	MARB	FAT
0.05	40	0.43	0.39	0.03

BIRTH WT: 87 | ADJ WEANING WT: 786 | ADJ YEARLING WT: 1250

Ka-Pow is a big time ¾ blood balancer bull whose got an impressive EPD profile. The best part is he matches his profile. Modest in BW, exceptional in growth, lots of maternal and excelling in carcass quality. Ka-Pow is one of the deepest bodied bulls in the offering with lots of width of base, bold muscle pattern and maintains a clean head and front 1/3. Sired by Grand Plan 9420, he's got lots of maternal value, and his dam has been a great producing female for Wacey since day 1. A solid herd sire prospect.



LOT 32



\$8,750
JADEN
BETTCHER

RWGW K/O K440

RWGW K440 | 4/16/2022 | CDGV179484 | HOMO POLLED | PB94 | Black

SLC OUTBACK 142X
RWG HORSE POWER H311
RWG ALLSTAR D510

CES DECKA OUTBACK 755
SFL SFL SLC SUE 325P
RWG WAR ADMIRAL 2528
PHG ALLSTAR A71



Homo Polled
Hetero Black

RWG RIGHT COMBINATION C506
RWGW KITTY G407 ET
RWG KITTY'S DREAM D526

RWG WAR ADMIRAL 2528
SLC LORA 164Y
BEAS BEAS 2806Z
RWG ROXY KITTY X 0301

epds

CED	BW	WW	YW	MILK	TM	CEM	STAY	DOC
5.7	4.6	96	152	24	72	4	14.6	13.4

carcass

YG	CW	REA	MARB	FAT
-0.05	69	0.97	0.09	0.01

BIRTH WT: 93 | ADJ WEANING WT: 834 | ADJ YEARLING WT: 1363

K/O is all power and performance. He ranks in the top 1% of the breed in growth and it shows. He posted a 93lb BW, 834lb WW to ratio 113, and 1363lb YW to ratio 112 on a 6 frame. His full brother is, again this year, the meat wagon of the pen and posted an 852lb WW to index 121! Clearly his fabulous dam can bring home the pounds year after year. If payable pounds is what makes you money, then this is your man! His pedigree is bred to maximize performance but also layered with lots of maternal value as he still ranks in the top 25% for milk and top 1% for total maternal. RWGW K/O 2440 is a clean fronted, big bodied bull that simply checks all of the boxes!



\$6,500
ANCHOR P
FARMS LTD

Royal Western Gelbvieh



\$8,000
BRIAN STRATULIAK



LOT 34-37 & 49 DAM



\$5,500
DON AND
DUSTIN MCMANN



RWG KOOL-PLAN K463 ET

RWG K463 | 4/26/2022 | CDGV179489 | HOMO POLLED | PB94 | Red

RWG EXACT COMBINATION E409
RWG GRAND PLAN G420 ET
RWG KITTY'S DREAM D526

RWG RIGHT COMBINATION C506
RWG HADIE 3505
BEAS BEAS 2806Z
RWG ROXY KITTY X 0301



Homo Polled

VV ZAKE 114Z
SLC PARKLAND 31E ET
SLC PARKLAND 220U

FRL FIR RIVER RANALDO 38U
SLC DEBBIE 209S
SLC MERV 12N
SLC COPPER PARKLAND 139G

epds

CED	BW	WW	YW	MILK	TM	CEM	STAY	DOC
10	0.6	72	108	25	61	7	15.3	9.2

carcass

YG	CW	REA	MARB	FAT
-0.05	31	0.46	0.06	0

BIRTH WT: 89 | ADJ WEANING WT: 731 | ADJ YEARLING WT: 1258

RWG Kool Plan is a heavy muscled, good footed, hairy 31E son. His sire was our second high seller in the 2021 sale for \$ 26 000 for 1/2 possession; 1/2 semen interest to Diamond D, North Dakota; he has gone on to become one of the top sires in the industry, stamping progeny with added body mass and fleshing ability. Combine that with the impressive Parkland 31E donor dam and you've got massively constructed, easy fleshing, high maternal valued genetics that offer exceptional teat and udder quality. Kool Plan will sire progeny that are moderate in BW, offer added calf vigor and be exceptionally easy to market to all segments of the beef industry. A true value added herd sire that's easy on the eyes and bred for profit.

RWG KICK-IT K465 ET

RWG K465 | 4/27/2022 | CDGV179490 | HOMO POLLED | PB94 | Black

RWG EXACT COMBINATION E409
RWG GRAND PLAN G420 ET
RWG KITTY'S DREAM D526

RWG RIGHT COMBINATION C506
RWG HADIE 3505
BEAS BEAS 2806Z
RWG ROXY KITTY X 0301



Homo Polled
Hetero Black

VV ZAKE 114Z
SLC PARKLAND 31E ET
SLC PARKLAND 220U

FRL FIR RIVER RANALDO 38U
SLC DEBBIE 209S
SLC MERV 12N
SLC COPPER PARKLAND 139G

epds

CED	BW	WW	YW	MILK	TM	CEM	STAY	DOC
8.1	0.1	65	93	25	57	6	19.4	9.2

carcass

YG	CW	REA	MARB	FAT
-0.07	29	0.54	0.16	0.01

BIRTH WT: 81 | ADJ WEANING WT: 696 | ADJ YEARLING WT: 1123

Kick It is the moderate, big middled brother from the flush. He would be ideal for a group of heifers or longer framed cows that need to be moderated to gain back efficiency, while increasing natural traits like udder quality, fertility and efficiency. Kick It has multiple full sisters and maternal sisters in production and they all excel in udder quality, breed back and fleshing ability. A great example is his maternal sister, RWG Parkland 9414, who was just named Reserve National Champion females @ Farmfair an Champion Senior Female @ Agribition. Our breeding program has always been based around layering cow families and when you go looking, this guys' got elite donors on the top and bottom of his pedigree.

Royal Western Gelbvieh

RWG GRAND KAHUNA K470 ET

RWG K470 | 4/29/2022 | CDGV179494 | HOMO POLLED | PB94 | Red

RWG EXACT COMBINATION E409
RWG GRAND PLAN G420 ET
RWG KITTY'S DREAM D526

RWG RIGHT COMBINATION C506
RWG HADIE 3505
BEAS BEAS 2806Z
RWG ROXY KITTY X 0301



Homopolled

VV ZAKE 114Z
SLC PARKLAND 31E ET
SLC PARKLAND 220U

FRL FIR RIVER RANALDO 38U
SLC DEBBIE 209S
SLC MERV 12N
SLC COPPER PARKLAND 139G

epds

CED	BW	WW	YW	MILK	TM	CEM	STAY	DOC
8.1	2.2	76	109	25	63	6	16.8	9.2

carcass

YG	CW	REA	MARB	FAT
-0.17	24	0.47	0.18	-0.03

BIRTH WT: 92 | ADJ WEANING WT: 726 | ADJ YEARLING WT: 1157

Grand Kahuna is the harry, dark red brother of the flush mates. He is very balanced and eye appealing. Phenotypically the nicest in terms of neck extension and the way his shoulders tie into his chest, long spined and square in his pelvis. We used him for the last couple of weeks to cover clean up on our big group of heifers. He's most likely best suited for a group of cows but could cover heifers in the right management systems. Once again, backed by maternal pedigree top and bottom, expect high quality replacement females from Grand Kahuna



LOT 34-37 & 49 MATERNAL SIB



RWG KEEP-PLANNING K501 ET

RWG K501 | 5/1/2022 | CDGV179491 | HOMO POLLED | PB94 | Black

RWG EXACT COMBINATION E409
RWG GRAND PLAN G420 ET
RWG KITTY'S DREAM D526

RWG RIGHT COMBINATION C506
RWG HADIE 3505
BEAS BEAS 2806Z
RWG ROXY KITTY X 0301



Homopolled
Hetero Black

VV ZAKE 114Z
SLC PARKLAND 31E ET
SLC PARKLAND 220U

FRL FIR RIVER RANALDO 38U
SLC DEBBIE 209S
SLC MERV 12N
SLC COPPER PARKLAND 139G

epds

CED	BW	WW	YW	MILK	TM	CEM	STAY	DOC
10.4	0.2	70	103	25	60	7	16.2	9.2

carcass

YG	CW	REA	MARB	FAT
-0.05	26	0.42	0.18	0.01

BIRTH WT: 86 | ADJ WEANING WT: 848 | ADJ YEARLING WT: 1320

Keep Planning is by far the longest bodied son of RWG Grand Plan 9420 to date and offers an exceptional blend of growth plus calving ease. His recip dam, a solid mature cow, did a good job and still kept his BW in the mid 80's. Keep Planning is a heifer approved bull with a genomic 10 on calving ease and a modest 0.2 BW, while adding in lots of growth and positive carcass values. A sire you could use on heifers and graduate to cows and be very happy with performance and progeny production. A very well bred bull with lots to offer.



Royal Western Gelbvieh



Here's the dark red, powerhouse son of RWG Horse Power 0311 and he is an absolute stand out in the pen. Massive in his rib, big stout hip, smooth jointed, clean sheath, massive scrotal and awesome foot quality. Kash flow is backed by a great RC daughter whose a maternal sister to RWG Bustin Stones 4603, so has a pedigree stacked with growth and production. He ranks in the top 1% for WW, YW& CW; Top 5% for TM; Top 10% for CREA; Top 25% Marbling. Kash flow will drive profit values of progeny on a genetic stand point, provide real performance, awesome phenotype and make progeny that have a high value in both the seedstock and most importantly, the commercial industry. If you want a touch more hair, this guy was a very hairy calf and his full sister in the replacement pen is fuzzy and flat out good.

We expect a solid set of Kash Flow calves in the spring of 2024 as we walked this bull

RETAINING 1/2 SEMEN INTEREST.



LOT 38 DAM

RWG KASH FLOW K444

RWG K444 | 4/17/2022 | CDGV179458 | HOMO POLLED | PB94 | Red

SLC OUTBACK 142X
RWG HORSE POWER H311
RWG ALLSTAR D510

CES DECKA OUTBACK 755
SFL SFL SLC SUE 325P
RWG WAR ADMIRAL 2528
PHG ALLSTAR A71



RWG RIGHT COMBINATION C506
RWG DAISY E447
RWG DAISY XPRESS 2401

RWG WAR ADMIRAL 2528
SLC LORA 164Y
COLB MR XAVIER X812
RWG DAISY XPRESS 0539

epds

CED	BW	WW	YW	MILK	TM	CEM	STAY	DOC
9.1	3.4	87	141	19	63	6	15.1	11.8

carcass

YG	CW	REA	MARB	FAT
-0.09	53	0.8	0.24	-0.01

BIRTH WT: 93 | ADJ WEANING WT: 780 | ADJ YEARLING WT: 1314

Royal Western Gelbvieh

RWG KRAKEN K439

RWG K439 | 4/16/2022 | CDGV179452 | HOMO POLLED | PB94 | Black



Homo Polled
Hetero Black

SLC OUTBACK 142X
RWG HORSE POWER H311
RWG ALLSTAR D510

RWG ALBERTA GOLD 3541
RWG GOODNIGHT DENVER D701
RWG YOUR GOODNIGHT 1539

CES DECKA OUTBACK 755
SFL SFL SLC SUE 325P
RWG WAR ADMIRAL 2528
PHG ALLSTAR A71

LCR WARNOCK 612W
RWG TOUCH 9111
RWG TEXAS WORTH 9223
ULL TWILIGHT 5T ET

epds

CED	BW	WW	YW	MILK	TM	CEM	STAY	DOC
10	1.6	77	121	22	60	5	17.2	9.8

carcass

YG	CW	REA	MARB	FAT
-0.17	52	0.75	0.06	-0.04

BIRTH WT: 91 | ADJ WEANING WT: 779 | ADJ YEARLING WT: 1314

It would not surprise anyone here if Kraken turns out to be the best bull we sell in the 2024 edition of Draft Picks. His maternal brothers have gone on to be some of the top bulls we have sold with many great reports and high praise for them all. The cow that stands behind them has an unremarkable amount of body mass/capacity with top notch udder quality, excellent foot quality and breeds back on time every year. Fertility and longevity are the biggest drivers in beef cow-calf profit and this bull has a lot to offer.



LOT 39 DAM



\$11,500
KEVIN
DALBALCON

RWGW KLAUS K419

RWGW K419 | 4/9/2022 | CDGV179482 | HOMO POLLED | PB94 | Red



Homo Polled

SLC OUTBACK 142X
RWG HORSE POWER H311
RWG ALLSTAR D510

JRI GUNG HO 282C51
RWG BLACKCAT E430
RWG BLACKCAT C520 ET

CES DECKA OUTBACK 755
SFL SFL SLC SUE 325P
RWG WAR ADMIRAL 2528
PHG ALLSTAR A71

JRI HOSS 293A43 ET
JRI MS FRANKIE 282R11
BEA PASSION 001X ET
RWG BLACKCAT 0410

epds

CED	BW	WW	YW	MILK	TM	CEM	STAY	DOC
11.3	0.5	77	126	20	58	6	16.5	12

carcass

YG	CW	REA	MARB	FAT
-0.1	32	0.6	0.04	0

BIRTH WT: 84 | ADJ WEANING WT: 670 | ADJ YEARLING WT: 1208

A high quality sire built like a tank! Huge scrotal and lots of centre mass and shape, Klaus is a favourite Horsepower son and we used him to cover some cows, expecting calves come April. His dam is an absolutely ideal Gung- Ho 282C51 daughter, she is moderate and tanky, yet feminine with ideal teat and udder quality. A highly maternal pedigree that should make unreal calf quality. Klaus offers an awesome genomic profile which is a good indication of is genetic value. A bull that's easy to recommend and should be easy to find in the pen.



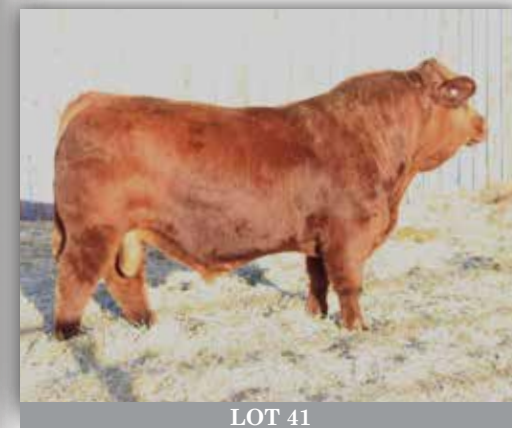
\$10,000
HAROLD AND
BETH MILNE

Royal Western Gelbvieh



Yes! This is the most impressive Guilt Trip 9418 son to date! He's so soft in his movement, big time muscle and massive in his body centre; he's nice skulled and clean in his neck and shoulders. Here's a heck of a good herd sire prospect and he's backed by one of the most prolific Pop a Top daughters. His dam JRI 270X872 has been a leading donor with multiple daughters hanging banners and many sons running herd sire duties for many producers with great reviews. Use this bull to make highly marketable calves and improve your programs maternal traits.

RETAINING 1/2 SEMEN INTEREST.



LOT 41

YORK 270K91 ET

YORK 270K91 | 4/10/2022 | AMGV1566663 | HOMO POLLED | PB99 | Red

RWG EXACT COMBINATION E409
RWG GUILT TRIP G418 ET
SLC PARKLAND 31E ET

RWG RIGHT COMBINATION C506
RWG HADIE 3505
VV ZAKE 114Z
SLC PARKLAND 220U



Homo Polled

JRI POP A TOP 197T83
MS DAZZLER 270X872
MS BLUE BELLE 270S772 ET

JRI TOP SECRET 253M75 ET
JRI MS RED DAWN 197R72
PLD FREE AGENT 125J3
MS PLD EXTRA STEP 270J67

epds

CED	BW	WW	YW	MILK	TM	CEM	STAY	DOC
7	2.0	69	95	14	48	2	14	10

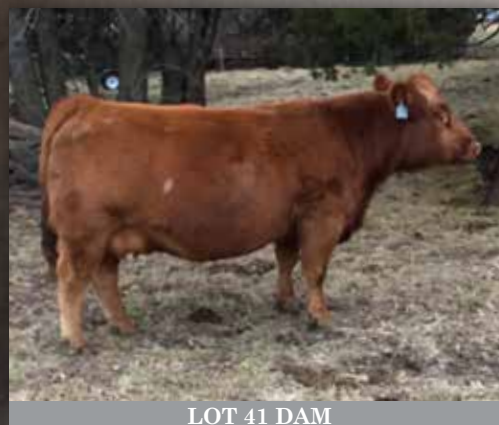
carcass

YG	CW	REA	MARB	FAT
-0.23	23	0.64	0.00	-0.03

BIRTH WT: N/A | ADJ WEANING WT: 599 | ADJ YEARLING WT: 1452



LOT 41 MATERNAL SISTER



LOT 41 DAM

RWG KYLE K507

RWG K507 | 5/4/2022 | CDGV179448 | HOMO POLLED | PC75 | Red

RWG EXACT COMBINATION E409
RWG GUILT TRIP G418 ET
SLC PARKLAND 31E ET

RWG RIGHT COMBINATION C506
RWG HADIE 3505
VV ZAKE 114Z
SLC PARKLAND 220U



Homo Polled

JRI POP A TOP 197T83
RWG OPAL C419 ET
CG BLACK OPAL 652S

JRI TOP SECRET 253M75 ET
JRI MS RED DAWN 197R72
CG BLACK NUGGET 25N
CG BLACK OPAL 214M

epds

CED	BW	WW	YW	MILK	TM	CEM	STAY	DOC
5.4	3.1	76	104	16	54	2	15.2	11.4

carcass

YG	CW	REA	MARB	FAT
-0.18	41	0.61	0.09	-0.04

BIRTH WT: 98 | ADJ WEANING WT: 694 | ADJ YEARLING WT: 1179

RWG Kyle 2507 represents our strategic hybrid breed up program. Our Simmental and Angus influence comes from industry's top donors just like Kyle's granddam Opal 652S, a very influential donor for Mader Ranches. Previous bulls from the Opal breed up program have been extremely successful including RWG Copy Right a heavily used herd sire for Fladeland Livestock. Kyle is sired by RWG Guilt Trip 9418, a maternal sire that is also performance based and creates highly regarded daughters. Kyle 2507 is one of the best balanced bulls in the sale offering and has a stacked pedigree of maternal greats. A top notch hybrid bull that would work wonders in a set of commercial cows making some awesome steers and replacement heifers, or seedstock cows making 88% progeny,



LOT 42 GRAND DAM

Royal Western Gelbvieh



\$5,500
JOE LANSING

RWG KRAMER K515

RWG K515 | 5/11/2022 | CDGV179460 | HOMO POLLED | PB94 | Black

SLC OUTBACK 142X
RWG HORSE POWER H311
RWG ALLSTAR D510

CES DECKA OUTBACK 75S
SFL SFL SLC SUE 325P
RWG WAR ADMIRAL 2528
PHG ALLSTAR A71



Homo Polled
Hetero Black

JRI GUNG HO 282C51
RWG FEMALE KITTY F415
RWG ZEE KITTY 2534

JRI HOSS 293A43 ET
JRI MS FRANKIE 282R11
COLB MR XAVIER X812
RWG ROXY KITTY X 0301

epds

CED	BW	WW	YW	MILK	TM	CEM	STAY	DOC
10.7	3.2	93	151	28	74	7	12.3	11.6

carcass

YG	CW	REA	MARB	FAT
-0.15	48	0.79	-0.04	-0.02

BIRTH WT: 93 | ADJ WEANING WT: 794 | ADJ YEARLING WT: 1334

Kramer is the Horsepower son that stamped with sires massive scrotal, great structure, added foot quality and bold rib shape. Kramer offers more frame, bone and length than his sire. He also offers more BW, as well as weaning and yearling growth, and better maternal indexes. His dam is flat out awesome, with a perfect tight udder, refined teats, long extended front 1/3 and is extremely productive. Her daughter RWG 0308 raised our high selling heifer calf, also out of Horsepower, at The Gathering this past December. It's a mating that works and creates very structurally correct cattle with added growth curve and payable pounds that make a difference when it's time to sell calves. Kramer is a solid herd sire prospect!



LOT 43 GRAND DAM



\$6,000
DON AND
DUSTIN
MCMANN

Royal Western Gelbvieh



Elite Jr Sire ALERT!! Knocked Up offers a great mix of reliable proven genetics and it shows! A posted 86 lbs BW, a Massive 915 WW to ratio 124, and a YW of 1332 lbs to ratio 110. Combining those numbers with his 119 REA index, 120 IMF, and his 127 Fat Index says it all- elite carcass and easy fleshing. His prolific donor dam is one of the most impressive cows in real life in working clothes and exceptional maternal traits. Knocked Up has excellent structure and foot quality with a first class disposition and is a true elite junior sire prospect. His sire, Frosty, was a previous sale feature, backed by Secretariat and the awesome Kitty's Fantasy donor. If you're looking to improve maternal traits, create awesome replacements and provide balanced performance, then don't be scared to get Knocked Up!

RETAINING 1/2 SEMEN INTEREST.



LOT 44



LOT 44 DAM

RWG KNOCKED UP K456

RWG K456 | 4/23/2022 | CDGV179473 | HOMO POLLED | PB94 | Black

JRI SECRETARIAT 285E78
RWG FROSTY NUGGET H408 ET
RWG KITTY'S FANTASY F516

JRI SECRET SENSATION 140A43
JRI MS PRIME STAR 285Z68
JRI SANTIAGO 37C31
RWG KITTY'S DREAM D526



Homo Polled
Hetero Black

SLC MERV 12N
RWG HADIE'S GIRL G421 ET
RWG HADIE 3505

SLC FREEDOM 178F ET
SLC HICKORY GOAL 272K
RWG XTREME TRACTION 0521
RWG YES HADIE 1508

epds

CED	BW	WW	YW	MILK	TM	CEM	STAY	DOC
11.7	1.9	85	119	33	75	6	15.4	11.1

carcass

YG	CW	REA	MARB	FAT
-0.3	16	0.68	0.13	-0.04

BIRTH WT: 86 | ADJ WEANING WT: 915 | ADJ YEARLING WT: 1332

Royal Western Gelbvieh

RWG KONG K459

RWG K459 | 4/23/2022 | CDGV179478 | HOMO POLLED | PB94 | HOMO BLACK



Homo Polled
Homo Black

JRI SECRETARIAT 285E78
RWG FROSTY NUGGET H408 ET
RWG KITTY'S FANTASY F516

JRI SECRET SENSATION 140A43
JRI MS PRIME STAR 285Z68
JRI SANTIAGO 37C31
RWG KITTY'S DREAM D526

RWG WAR ADMIRAL 2528
SLC LORA 164Y
BEA PASSION 001X ET
RWG BLACKCAT 0410

opds

CED	BW	WW	YW	MILK	TM	CEM	STAY	DOC
5.6	2.8	82	123	19	60	2	14	12.2

carcass

YG	CW	REA	MARB	FAT
-0.16	45	0.76	0.18	-0.02

BIRTH WT: 94 | ADJ WEANING WT: 738 | ADJ YEARLING WT: 1277

RWG Kong is a stout made, moderate frame, balanced bull in terms of body length and muscle mass. He's backed by an extremely productive RC cow- Black Cat 9504- who is very productive with an average WW ratio of 104 and Yearling of 107! Expect Kong to duplicate the ability to positively impact weaning and yearling weight, yet slow down mature growth curves, leaving moderate, efficient, profitable daughters. Kong has an exceptional pedigree layered with highly productive and reliable genetics. He's truly a bull that combines positive genomic values and has awesome phenotype to match.



LOT 44 & 45 SIRE



\$9,000
JADEN
BETTCHER

YORK 20K7

YORK 20K7 | 04/10/2022 | AMGV1566667 | HOMO POLLED | 75% | Red



Homo Polled

TOP SECRET 253M75 ET
POP A TOP 197T83
MS RED DAWN 197R72

PLD FREE AGENT 125J3
MS PLD FRONTIER 253J60
EXTRA EXPOSURE 285L71 ET
MS SPECIAL AGENT 197M62

COWBOY CUT 213S67
MS COWBOY CUT 20X20
MS JUDD ROB ROY 20T2

TOP SECRET 253M75 ET
MS PLD GRAND PRIX 213G57
RED NORTHLINE ROB ROY 122K
MISS CHEROKEE CANYON 20P1

opds

CED	BW	WW	YW	MILK	TM	CEM	STAY	DOC
13	-0.1	60	90	23	52	4	16	1.03

carcass

YG	CW	REA	MARB	FAT
-0.32	17	0.63	-0.04	-0.06

BIRTH WT: N/A | ADJ WEANING WT: 552 | ADJ YEARLING WT: 1301

A deep, soggy easy doing bull from a proven sire. Pop a Top has wrote his part in the history of this breed with top producing daughters, and profit orientated sons. His dam JRI 20X20 is a big bodied Cowboy Cut daughter and her dam is the awesome Northline Rob Roy foundation cow. 20K7 is a fluid in motion bull with lots of substance and so loose made. It's easy to see him being a female maker with big ribbed, easy keeping daughters that absolutely produce. Kick him out with a sweet set of red Angus cross mama's or even Char cross and create some awesome buckskin steers or improve the replacement pen quality.



LOT 46 DAM

pg 39



\$6,500
NATTESTAD
FARMS

Royal Western Gelbvieh



\$5,500
KATIE
MICHAELCHUCK



\$4,500
CURTIS
MCCRACKEN



RWG KARMA K517

RWG K517 | 5/14/2022 | CDGV179431 | HOMO POLLED | PC88 | Red

RWG EXACT COMBINATION E409
RWG GUILT TRIP G418 ET
SLC PARKLAND 31E ET



Homo Polled

RWG FREE BEER F401 ET
RWG HAPPY FLOWER H458
RWG DESTINY'S FLOWER 8201

RWG RIGHT COMBINATION C506
RWG HADIE 3505
VV ZAKE 114Z
SLC PARKLAND 220U

VISION UNANIMOUS 1418
SLC LORA 164Y
GREAT DIVIDE 503C
RWG DESTINY D518

epds

CED	BW	WW	YW	MILK	TM	CEM	STAY	DOC
8.4	1.3	73	108	17	54	5	14.3	12.2

carcass

YG	CW	REA	MARB	FAT
-0.12	31	0.65	0.31	0

BIRTH WT: 79 | ADJ WEANING WT: 682 | ADJ YEARLING WT: 1097

Sired by Guilt Trip 9418 and backed by our favourite Free Beer daughter, and wow, are they great females. Karma is her first son and is moderate framed, deep bodied, dark red, and easy fleshing. Her second son in the young development bull pen is an absolute standout sired by last years high selling bull RWG Jealous 1415, a true statement of female quality. Combine that with Guilt Trip and you'll have very productive genetics. Karma would have enough calving ease and moderation to use on well-developed heifers or second calvers with ideal results.

RWG KANE K521

RWG K521 | 5/17/2022 | CDGV179425 | HOMO POLLED | PB94 | Red

JRI SECRETARIAT 285E78
RWG HEINEKEN H434
RWG LADY C408



Homo Polled

JRI HALLELUJAH 246E50
RWG LORA H474
RWG LORA E304 ET

JRI SECRET SENSATION 140A43
JRI MS PRIME STAR 285Z68
RWG WAR ADMIRAL 2528
RWG ZEKA 2612

JRI SECRET POWERS 254C821
JRI MS HONEY 246Z10
RWG BLOWIN' MINDS 4402
SLC LORA 164Y

epds

CED	BW	WW	YW	MILK	TM	CEM	STAY	DOC
12.1	-0.5	61	83	20	50	7	12.2	9.2

carcass

YG	CW	REA	MARB	FAT
-0.19	20	0.5	0.12	-0.03

BIRTH WT: 89 | ADJ WEANING WT: 691 | ADJ YEARLING WT: 1108

RWG Kane 2521 is sired by RWG Heineken 0434, a previous Draft Pick who was a successfully used heifer bull, and backed by the calving ease Secretariat bull from JRI. Kane's dam, RWG Lora 0474 is a very productive females that also combines a lot of calving ease and maternal traits. Her 2023 born heifer calf was the red Gathering sale feature, a Horsepower daughter, who sold for \$10 000 to Fladeland Livestock & Pin to Point Gelbvieh. Kane offers a very solid pedigree, layered with highly productive cows and lots of added calving ease, one of those heifer bulls that you can throw out with some cows and still love the results.

Royal Western Gelbvieh

Kingpin displays the cleanest cut, sharpest fronted, longest made son of Horsepower. His shoulder lays in neatly and blends into his big ol' loin and square, true hip. He's not a round, bold muscle bull, but he carries it deep into his leg. He's clean sheathed, like we've come to expect from our matings, and specifically the Horsepower sons. If you're looking to add a sire that can add some hair and class to his progeny, and still maintain maternal traits and balance growth, Kingpin should be at the top of your list. We utilized Kingpin in 2023 as a walking sire, it was an easy choice to gain genetics from Horsepower 0311 and Parkland 31E.

RETAINING 1/2 SEMEN INTEREST



LOT 49



\$6,250
DON AND DUSTIN
MCMANN

RWG KINGPIN K502

RWG K502 | 5/3/2022 | CDGV180923 | HOMO POLLED | PB94 | Black

SLC OUTBACK 142X
RWG HORSE POWER H311
RWG ALLSTAR D510

CES DECKA OUTBACK 755
SFL SFL SLC SUE 325P
RWG WAR ADMIRAL 2528
PHG ALLSTAR A71

VV ZAKE 114Z
SLC PARKLAND 31E ET
SLC PARKLAND 220U

FRL FIR RIVER RANALDO 38U
SLC DEBBIE 209S
SLC MERV 12N
SLC COPPER PARKLAND 139G



Homo Polled
Hetero Black

epds

CED	BW	WW	YW	MILK	TM	CEM	STAY	DOC
7.4	1.7	74	112	22	59	5	14.5	10.5

carcass

YG	CW	REA	MARB	FAT
-0.04	48	0.65	0.14	0

BIRTH WT: 93 | ADJ WEANING WT: 710 | ADJ YEARLING WT: 1210



LOT 49 MATERNAL BROTHER



LOT 49 DAM



Rocky Top
GELBIEH



**SEMEN &
EMBRYOS**

AVAILABLE
YEAR ROUND

royalwesterngelbvieh.com
realworldgenetics.ca



PROFILE OF CHAMPIONS





BOHRSON
MARKETING SERVICES

RR 4, Site 7, Box 28 Olds, Alberta Canada T4H 1T8

If you wish to stop receiving catalogues from
BMS, please email jodi@bohrson.com or call/text
403-519-3515 to be removed from the mailing list



RETURN POSTAGE GUARANTEED
PORT DE RETOUR GARANTI

