

44TH ANNUAL



PEMBINA TRIANGLE

SIMMENTAL ASSOCIATION FEMALE SALE

NOVEMBER 21, 2024

CYPRESS RIVER ARENA | CYPRESS RIVER, MB | 2 PM

WELCOME

BOHRSON MARKETING SERVICES

The Pembina Triangle Simmental Association 44th Annual Sale is one of the longest running sales in the country and one that annually offers the very best. The reasoning a sale can withstand 4+ decades is the people behind it are dedicated and passionate about the breed. This group of consignors are certainly that and the set of cattle on offer are truly impressive from start to finish. The amount of success stories from this sale are impressive and it'll continue to grow for years to come.

We've got a great amount of respect for this set of breeders as they annually offer their very best and this year they're bringing the goods. As our crew toured through the summer of 2024, the dedication was to be commended as these breeders only put their strongest forward. Whether it is a Fullblood, Red or Black Simmental that you seek, we know some of the very best bred and open female will sell in this sale.

The livestock industry is an enjoyable business for so many reasons and working with fellow cattlemen is certainly at the top. You can't find a better group of breeders than the ones represented here and they fully stand behind their product. Our BMS Team is very familiar with these breeders, their programs and we encourage you to join us but if you can't, we would be honoured to represent your needs in a professional manner. We look forward to seeing you at the 44th Pembina Triangle for another great event of strong cattle backed by even better people.

**Best Regards,
The Bohrson Marketing Team**



SCOTT BOHRSON



TAYLOR RICHARDS



ROBERT VOICE



DARRYL SNIDER



JAXON PAYNE



MARTIN BOHRSON



NATE MARIN



CODY HANEY



RILEY BOHRSON

SCHEDULE OF EVENTS

Wednesday, November 20

5PM Cattle available for viewing

Thursday, November 21

9AM Cattle available for viewing

2PM Pembina Triangle Simmental
Association 44th Annual Sale

5PM Supper

SALES MANAGEMENT

Scott Bohrson (403) 370-3010

Rob Voice (306)-270-6082

Taylor Richards (306) 821-4169

Cody Haney (403) 845-8806

Jaxon Payne (306) 830-0456

Darryl Snider (780) 385-5561

AUCTIONEER

Ryan Dorran (403) 507-6483

INSURANCE

Lois McRae (204) 573-5192

ONLINE BIDDING

DLMS.ca

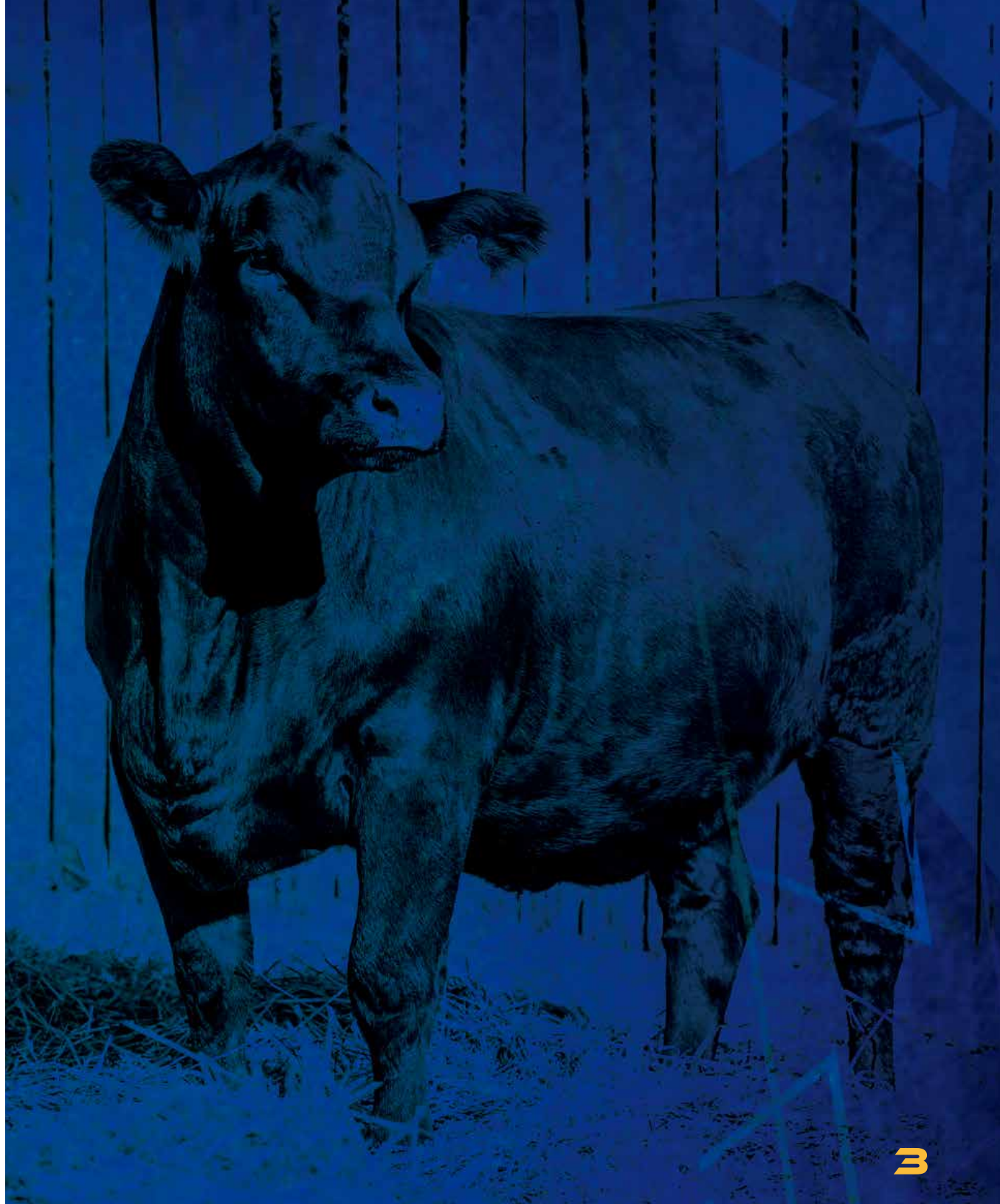


DELIVERY

We encourage you to bring your trailer to the sale. Delivery can be provided at cost to the buyer.

TERMS & CONDITIONS

The information printed has been supplied by the seller and believe to be accurate. Updated sheets and announcements from the block will take precedence over any incorrect printed material. Cattle will sell under the standard terms & conditions put forward from CSA & BMS. These are available upon request.



BERT'S NR BERT'S NR SIMMENTALS

Norbert, Pam, Sam & Nathan de Rocquigny
Haywood, MB | 204.745.7930 | npderocquigny@mynetset.ca
www.facebook.com/BertsNRSimmentals

Welcome to the 44th Edition of the Pembina Triangle Simmental Association Sale. We are happy to continue to be part of such a great group of Simmental breeders and working with the professional services of Bohrsen Marketing. This year we are offering eight bred heifers, all AI bred with no exposure. A big Thank You to everyone who has supported our program in the past. Looking forward to seeing everyone at the PTSA Sale on November 21st in Cypress River, MB.

CONSIGNERS

1-8	Bert's NR Simmentals
52-55	Delight Simmental
32-35	DeQuier Cattle Co.
9-15	Handford Simmentals
21	Lil' Chicks Cattle Co
45-46	Skyridge Farms
18-20	Silver Lake Farms
41-44	Southam Simmentals
16-17	Twin Meadow Livestock Farms
47-51	Twin Oak Livestock
22-31	Wilcox Simmentals
36-40	Van de Velde Cattle



BRED HEIFER

BERTS MS LOVE 67K

Purebred | Hetero Polled | Red | PG1445315 | NRD 67K | 26/12/2022

1



AI Bred to Springcreek Maverick 48H on April 10, 2024 (Safe). No Exposure.

SIRE

MRL STATEMENT 3F
KWA CAN-AM 123H
KWA MS ROCK 14X

DAM

SVS TYCOON 841F
BERTS MS JULIE 4J
SUNNY VALLEY CARRIE 3Z

BW	Adj.WW	Adj.YW	CE	BW	WW	YW	MK	MCE	MWW
77			15.1	0.3	82.1	124.4	35.2	8.7	76.3

A personal favorite for superior phenotype, and cow family behind her that proves their worth year after year. Beautiful udder on dam and granddam expect nothing but the same on 67K. Great set of EPD'S on this Can-am daughter.



SISTER TO DAM

BRED HEIFER

BERTS MS LUCY 8L

Purebred | Homo Polled | Red | PG1444261 | NRD 8L | 6/1/2023

2



AI Bred to Springcreek Maverick 48H on April 16, 2024 (Safe). No Exposure.

SIRE

SVS BROOKS 669D
SVS TYCOON 841F
SVS RED ANNIE 411B

DAM

NUG ROYAL RED 324A
BERTS MS EXTREME 57E
IPU MS. TOUCHDOWN 46X

BW	Adj.WW	Adj.YW	CE	BW	WW	YW	MK	MCE	MWW
97			6.6	2.8	90.4	127.6	25.1	3.9	70.3

A red powerhouse Tycoon daughter. A big bodied, broody made female. Reminds me a lot of her granddam in her make up.



SERVICE SIRE

BRED HEIFER

BERTS MS LORELEI 10L

Purebred | Homo Polled | Red | PG1444266 | NRD 10L | 8/1/2023

3



AI Bred to MRL Red Force 12U on March 29, 2024 (Safe). No Exposure.

SIRE

R PLUS 20X
BLI RED ADDICTION 224Z
LFE RS MISS ARNOLD 609U

DAM

KWA CHAKOTA 374A
BERTS MS CHAMPAGNE 52C
BERTS MS CUB 57X

BW	Adj.WW	Adj.YW	CE	BW	WW	YW	MK	MCE	MWW
96			5.6	2.8	60.3	86.8	23.1	2.2	53.3

Little different pedigree here on this lighter brown hairy heifer. Dam has already had couple daughters sell through PTSA sale.

BRED HEIFER

BERTS MS LAURA 15L

Purebred | Homo Polled | Black | BPG1444277 | NRD 15L | 11/1/2023

4



AI Bred to KWA Slider 196H on April 2, 2024 (Safe). No Exposure.

SIRE

REMINGTON LOCK N LOAD 54U
SRH HANNIBAL 5H
SRH PRECIOUS 73A

DAM

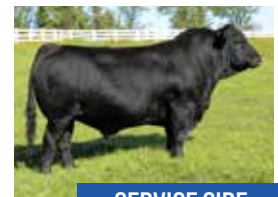
WLB GO DADDY 52Z 368D
WLB 368D DELLA 327F
WLB 254Z BARB 446C

BW	Adj.WW	Adj.YW	CE	BW	WW	YW	MK	MCE	MWW
78			15.3	-0.4	79.1	119.2	20.2	6.7	59.8

A very attractive package that moves with ease. Take hold of this Hannibal daughter as you may not find many more. Maternal sib sold to Downhill.



SIRE



SERVICE SIRE

BRED HEIFER

BERTS MS LUCIANA 30L

Purebred | Homo Polled | Black | BPG1471600 | NRD 30L | 17/1/2023

5



AI Bred to WHF Limitless B011 on April 5, 2024 (Safe). No Exposure.

SIRE

TJSC BOONE PICKENS 46C
MADER SON OF ANARCHY 144H
LFE BS SHEILA 82A

DAM

SVS DYNASTY 915G
MADER SUGAR 26J
MADER SUGAR HIGH 26C

BW	Adj.WW	Adj.YW	CE	BW	WW	YW	MK	MCE	MWW
68	616		12.5	0	74.6	106.9	18.7	5.7	56

A female that is very stout made, setting down a real nice udder. Very quiet and likes to get scratched when in pen.



SIRE



SERVICE SIRE

BRED HEIFER

BERTS MS LEXI 34L

Purebred | Homo Polled | Red | PG1445298 | NRD 34L | 19/1/2023

6



AI Bred to Springcreek Maverick 48H on April 10, 2024 (Safe). No Exposure.

SIRE

SVS BROOKS 669D
SVS TYCOON 841F
SVS RED ANNIE 411B

DAM

MADER LIEUTENANT 50E
OAKVIEW GEMMA 138G
OAKVIEW DYNAMIC 331D

BW	Adj.WW	Adj.YW	CE	BW	WW	YW	MK	MCE	MWW
90	655		9	2.7	96	138.5	29	6.4	77

Dark red long bodied tycoon daughter. This female is well balanced from great feet, to real nice udder, to being very athletic. Dam weaned off heavy weight El Dorado bull calf this fall.



SERVICE SIRE

BRED HEIFER

7

BERTS MS LINDA 52L

Purebred | Homo Polled | Red | PG1445304 | NRD 52L | 26/1/2023



AI Bred to Springcreek Maverick 48H on May 5, 2024 (Safe). No Exposure.

SIRE

MRL PLAYMAKER 36G
MRL HAT TRICK 7J
MRL MISS 6656D

DAM

SVS TYCOON 841F
BERTS MS JUNE 10J
MUIRHEADS NYDAM 54X

BW	Adj.WW	Adj.YW	CE	BW	WW	YW	MK	MCE	MWW
82	599		13.2	1.4	70.4	96.1	26.7	8.3	61.9

A very stout made heifer in a red calving ease package. Tycoon x Nydam 54X great pedigree.



SERVICE SIRE

BRED HEIFER

8

BERTS MS LEONA 61L

Purebred | Homo Polled | Black | BPG1445297 | NRD 61L | 2/2/2023



AI Bred to KWA Slider 196H on April 5, 2024 (Safe). No Exposure.

SIRE

SFM STOUGHTON 18D
WLB BULL 18D 513G
WLB 323B RITA 386D

DAM

MUIRHEADS JACK DANIELS50X
JONESYS MS DANIELS 15C
JONESYS MS EXPO 15Z

BW	Adj.WW	Adj.YW	CE	BW	WW	YW	MK	MCE	MWW
91	636		4.7	4	77.3	120.2	26.4	2.9	65.1

Check out the outcross pedigree on this Stoughton x Jack Daniel's daughter. She resembles her dams power and substance very well. Dam weaned off one our heaviest heifer calves this fall.



SERVICE SIRE

HANDFORD HANDFORD SIMMENTALS

Robert & Pam | Jason & Jayme | Riley & Kendall
Snowflake, MB | Robert 204.242.4359 | Jason 204.242.4402
robhand1@hotmail.com

Welcome to the 44th annual Capital PTSA sale. It's an honour to be involved in such a long running, prestigious sale with a group of breeders and cattle that are second to none. Please reach out with any questions on our heifers consigned to the sale.



BRED HEIFER



SRH MISS ICE CAP 12L

Purebred | Polled | Black | BPG1447942 | SRH 12L | 9/1/2023



AI Bred to SRH Hannibal 5H on March 28, 2024 (Safe). Exposed to KWA Statement 97K from April 20 - May 30.

SIRE

WFL WESTCOTT 24C
RF CAPACITY 742E
RF FAMOUS 409B

DAM

IPU 2Y PREFERENCE 181E
SRH MISS PREFERENCE 90G
SRH MOVER 29D

BW	Adj.WW	Adj.YW	CE	BW	WW	YW	MK	MCE	MWW
90	698		6.8	4.5	90.3	131.5	20.1	2.4	65.3

This Capacity female is sure to leave her footprint in her new owner's herd. She is a long-bodied, smooth made female that I think will produce exceptional males and females. Bred early to Hannibal is icing on the cake.



SERVICE SIRE

BRED HEIFER

SRH MISS FULL LOAD 29L

Purebred | Polled | Black | BPG1447819 | SRH 29L | 20/1/2023

10



AI Bred to KWA Slider 196H on March 28, 2024 (Safe). Exposed to KWA Statement 97K from April 20 - May 30.

SIRE

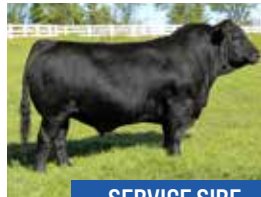
REMINGTON LOCK N LOAD 54U
W/C LOADED UP 1119Y
AUBREYS BLACK BLAZE III

DAM

NCB COBRA 47Y
SRH MISS COBRA 7E
SRH MISS ROCK 17C

BW	Adj.WW	Adj.YW	CE	BW	WW	YW	MK	MCE	MWW
89	663		11.1	3	84.1	123.2	21.2	7.2	63.3

I think you're going to love this soggy, smooth made blaze faced heifer. Her damn is a favourite around here. She has produced bulls and females that always rise to the top. I would expect nothing different from 29L. She always catches your eye in the pen and gets the second look every time. Early breeding to Slider should click well. Buy with confidence.



SERVICE SIRE

BRED HEIFER

SRH MISS MAKER 45L

Purebred | Polled | Red | PG1450098 | SRH 45L | 26/1/2023

11



AI Bred to SRH Hannibal 5H on March 31, 2024 (Safe). Exposed to KWA Statement 97K from April 20 - May 30.

SIRE

MRL RED WHISKEY 101B
NAC GIBSON 78G
X-T RED ROSE 9C

DAM

LFE PLAYMAKER 447X
SRH MISS MAKER 45A
SRH MISS WEST 4X

BW	Adj.WW	Adj.YW	CE	BW	WW	YW	MK	MCE	MWW
92	700		6.6	4.8	82.3	119.8	24.5	6	65.7

Here's the power heifer of our bred offering. Dark red with a bit of extra frame to produce the performance cattle we are looking for these days. Her Damn has been a may stay around here. Producing both bulls and females. Early breeding to Hannibal could give you your next red blaze face herd sire. Proven mating here. We love the Gibson females we have at home.



SERVICE SIRE

OPEN HEIFER

SRH MISS SUGAR 2M

Purebred | Polled | Red | PG1480320 | SRH 2M | 1/1/2024

12



SIRE

TNT BOOTLEGGER Z268
MRL RED WHISKEY 101B
MRL MISS 677Y

DAM

IPU 2Y PREFERENCE 181E
SRH MISS PREFERENCE 75G
SRH MISS WESTERN 38A

BW	Adj.WW	Adj.YW	CE	BW	WW	YW	MK	MCE	MWW
92	619		8.1	4.1	91.3	126.8	20.6	8.3	66.3

After the success of our Gibson bull who is a son of Red Whiskey, I bought some semen to breed some more of those genetics into our herd. 2M is a dark red proud fronted heifer that I think will make an exceptional cow. Good performance with an attractive profile.

OPEN HEIFER

SRH MISS DIMENSION 3M

Purebred | Polled | Black | UNR1480321 | SRH 3M | 1/1/2024

14



SIRE

MR TR HAMMER 308A ET
CKCC LD DIMENSION 8965
WF FOREVER LADY Z165

DAM

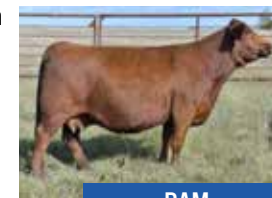
WS BEEF KING W107
CDI MS BEEF KING 11Z
CDI MS SHEAR FORCE 121T

BW	Adj.WW	Adj.YW	CE	BW	WW	YW	MK	MCE	MWW
89			11.2	2.1	91	134.6	13.6	4.6	59.1

3M is an embryo calf from the 11Z cow we purchased from Capitals LCDR a few years ago. Chris told me his red program was centered around this cow so we jumped at the opportunity to buy her. We flushed her to several different bulls with great success. This Dimension heifer is everything we hoped for. She's got the blaze face we strive for with the depth, muscle and length to be sure to be your next herd Matron. Power cow in the making. Not a fluke either, as we have a couple of stand out full brothers in the bull pen.



SIRE



DAM

TWIN MEADOW TWIN MEADOW LIVESTOCK FARMS

Patrick & Tracey Wilcox

Treherne, MB | Home 204.723.2386 | Cell 204.526.7060 or
204.723.0029 | pwilcox@mymts.net

We would like to welcome you to the 44th Pembina Triangle Association Sale! This year Pat and I have decided to consignments only 2 animals this year. We decided to bring a great bred that we know will work for anyone's herd and plus a great open heifer that will surely find a friend sale day. We were out to a couple fairs this summer and will be at Manitoba Ag Ex with our show string.

We look forward to visiting with you at the sale or you can gladly come to the farm for a tour! Please feel free to contact us or sales management Bohrson Marketing Service if you have any questions on our offering.

OPEN HEIFER

SRH MISS AUTHORITY 36M

Purebred | Polled | Red | UNR1480319 | SRH 36M | 23/1/2024

15



SIRE

NF TRUMP S582
CDI AUTHORITY 77X
CDI MS CROCKET 88T

DAM

WS BEEF KING W107
CDI MS BEEF KING 11Z
CDI MS SHEAR FORCE 121T

BW	Adj.WW	Adj.YW	CE	BW	WW	YW	MK	MCE	MWW
88			11.1	2	79.7	120	19.8	3.3	59.7

36M is another calf from the 11Z cow. Went old school with an Authority meeting. The result is this sold red, maternal driven heifer. Good performance, great body type with the Mama cow look.



SIRE



BRED HEIFER

16

TCW LONDON 75L

Purebred | Polled | Red | PG1425694 | TCW 75L | 26/2/2023



Exposed to TCW Lucifer March 18 - April 2 (Safe). Exposed to Fairview Vault 22J from April 3 -August 23.

SIRE

FAIRVIEW PAYROLL 19D
FAIRVIEW REVENUE 157H
FAIRVIEW ZEUSETTE 157D

DAM

CCR COWBOY CUT 5048Z
TCW HAILEE 44H
TCW SHERRI 5B

BW	Adj.WW	Adj.YW	CE	BW	WW	YW	MK	MCE	MWW
93	533	978	3.5	6.6	79.5	112.4	29.5	-0.3	69.3

London is another female going back to TCW Sherri 5B which was a full sib to our donor cow TCW Ruby. We decided to use our old herd bull Fairview Revenue on a few red and black cows being a Non Diluter Fullblood. We decided to keep London's full sib last year and she had a heifer in the keeper pen this year. We kept some in herd semen on TCW Lucifer but also got to privilege on using for a couple weeks before he went to his new owner's Charlie Murray. We thought London would pair very well with Lucifer and we are excited to see what her new owner will get as a calf! Lucifer is off our show cow Jazzebelle which had a great show career last year as a pair and then Lucifer was admired by many last fall at Manitoba Ag Ex. London will be a great addition to any herd as she is deep and moderate framed female.

OPEN HEIFER

17

TCW MAVIS 431M

Purebred | Polled | Black | BPG1462942 | TCW431M | 22/1/2024



SIRE

GEFF COUNTY O
ALLIANCE COUNTY DEPUTY
ALLIANCE BLACK SARAH

DAM

GCF RESOLUTION U15
MISS R PLUS 4315B
MISS R PLUS 9172W

BW	Adj.WW	Adj.YW	CE	BW	WW	YW	MK	MCE	MWW
91	603		8.6	2.9	74	113.1	18.6	3	55.6

We had planned to keep Mavis for our keeper pen until we decided to consign her to the Pembina Sale. Mavis is another great offspring of one of our R Plus 4315B. We had the privilege of using Alliance County Deputy for one breeding season and we had great success on getting 4 great females that are patterned very similar in their make ups. Mavis is a great heifer that loves attention and will be a great show heifer for someone or also great to add into anyone's keeper pen.

SILVER LAKE SILVER LAKE FARMS

Clint, Andrea & Family
Cartwright, MB | 204.825.8012 | 204-851-6087
adbertholet@hotmail.com

Welcome to the 44th annual PTSA sale! We are happy to continue to be a part of such a great group of Simmental breeders and working with the professional service of Bohrsen Marketing. This year we are offering 3 open females from 3 of our best donor cows! These are 3 females that should be staying right here at Silver Lake but our loss is your gain! Feel free to give us a call or better yet stop in and check them out yourself! The coffee is always on! Videos will be available prior to the sale.



OPEN HEIFER

18

SILVER LAKE ADLEY 907L

Fullblood | Horned | Red | T1475289 | MARC 907L | 5/12/2023



SIRE

SIBELLE POL DARWIN 21F
SILVER LAKE JENNER 9J
MCM MISS FARRAH FF 10F

DAM

DOUBLE BAR D INTUITION
ANCHOR D ADLEY 175C
HEMR SONYA 25S

BW	Aug 10	Adj.YW	CE	BW	WW	YW	MK	MCE	MWW
80	705		2.9	6	68	91.1	33.5	1.9	67.5

Here is an outstanding full fleck heifer! This heifer stacks the two best fleck cows that have walked at Silver Lake, Adley 175C and MCM 10F. Adley is a super thick, deep bodied heifer that is a wide as a tabletop. Her sister was one of the highlights of the World Simmental Sale this summer, going to the great program of Wolfe Farms. Her dam, Adley is a tank of a cow that can crank them out! And her sire, Jenner was one of the high selling bulls in our 2022 Bull Sale.



DAM



SIRE



PATERNAL GRANDDAM

OPEN HEIFER

19

SILVER LAKE NEVA 917L

Purebred | Polled | Red | PTG1477687 | MARC 917L | 8/12/2023



SIRE

LFE STRATTON 3094F
LFE LOYALTY 836H
IPU 10D POCAHONTAS 117F

DAM

BLACKSAND MIND GAMES 27Z
BLACKSAND NEVA 89B
BLACKSAND RANCH DEVA 18X

BW	Aug 10	Adj.YW	CE	BW	WW	YW	MK	MCE	MWW
100	780		10.3	3.8	70.3	114.7	21	5	56.2

Here is an outstanding heifer out of the Blacksand donor we purchased from the Spring Creek Dispersal. She has a proven track record in the Springcreek program with 17 registered progeny! This Loyalty heifer is stylish and thick, we are very excited for the future of this female.



DAM



SIRE

OPEN HEIFER

20

SILVER LAKE BETH 919L

Purebred | Polled | Red | PTG1477688 | MARC 919L | 8/12/2023



SIRE

LFE STRATTON 3094F
LFE LOYALTY 836H
IPU 10D POCAHONTAS 117F

DAM

WFL WESTCOTT 24C
PHEASANTDALE ELIZABETH 232E
BLACKSAND FEARLESS 5A

BW	Aug 10	Adj.YW	CE	BW	WW	YW	MK	MCE	MWW
95	775		2.7	4.3	73.1	118	24.4	-0.3	61

Beth is an exceptional female, she had brood cow written all over her. She is super deep bodied, easy doing and smooth made. Her dam, PTS 232E, is our leading red donor cows that we purchased from the Wilson Stock Farms Dispersal sale. She raised a sale topping bull calf, flushed very well as we got 5 full siblings on the ground this year and just weaned a top heifer calf. Power and performance runs deep in this one! Watch for her two full brothers in the 2025 Prairie Partners Bull Sale.



MATERNAL SIB



SIRE

LIL' CHICKS LIL' CHICKS CATTLE CO

Mitchell and Shaelyn Toews – Megan Beswitherick
Austin, MB | 204.870.2198
5Tfarms5@gmail.com

Welcome to the 44th Annual Pembina Triangle Simmental Association Female Sale! We are excited to be back again this year and with an amazing heifer calf at that! We only have one full blood cow in the herd, and this is her best calf to date. We are selling this calf only because we want to focus all our efforts on our purebred herd. We retained a full brother in our herd as a walking sire and he did extremely well on pasture in his first breeding season.

We have had a busy year as new parents to our daughter Morgan and couldn't be happier. She loves cows almost as much as her mom!

We can't wait to see you all at the sale on November 21, 2024 in Cypress River, MB!



OPEN HEIFER

21

CHIC MARVEL 5M

Fullblood | Polled | Red | P1462500 | CHIC 5M | 17/1/2024



SIRE

DOUBLE BAR D BALBOA 4Z
RUGGED R BELLAGIO 5057C
JRCC SELINA 2011Z

DAM

JNR CASHMERE
OAKVIEW HEROINE 445H
OAKVIEW DAELYN 142D

BW	Adj.WW	Adj.YW	CE	BW	WW	YW	MK	MCE	MWW
81			1.1	5.6	78.7	107.8	26	-1.1	65.4

Marvel is one of the top heifer calves in the pen this year. She comes from a cow that we bought from Oakview Simmentals a few years back in 2021. The dam is a top producer in our herd and a favorite whenever we have people tour our herd. Marvel is long-bodied and deep sided that will make a great all around mama with a good udder. She has been raised on pasture, grown on grass and has put on some miles to keep her feet sound. Don't overlook this little girl if you want to add milk and longevity to your herd.



SIRE



DAM

WILCOX WILCOX SIMMENTALS

Anthony, Ariel & Family
Brett & Family
Treherne, MB | Anthony 204.750.1658

Welcome to the 44th annual Pembina Triangle Association Sale! We thank our years past buyers and are excited to showcase our consignments to this year's sale. As many in our Simmental community know, Ernie's passing has left a palpable hole in our family and farm. Ernie was a proud member of the Pembina Triangle Association, and brought his cattle here for 41 years. Grandpa shared his love for the breed working hard to produce quality cattle. We are honoured to have been able to share in his love for the breed and continue his legacy here at Wilcox Simmentals. As always feel free to contact us with any questions and our farm is always welcome for a visit.



The Tradition
Some folks just don't get it. They think owning cattle makes no sense. It takes too much time, too much equipment, not to mention the expense.
But the fondest memories of my life they might think sound funny, were made possible by my grandpa, 'cause he spent the time and spent the money.
You see, the most important lessons helping values grow so strong, come from loving cattle and passing that tradition on.

BRED HEIFER

22

WILC LARA 2L

Purebred | Polled | Red | UNR1482891 | WILC 2L | 1/1/2023



AI Bred to Rust Henn Rambler 6003 on April 7 (Safe). Exposed to Black Gold/GW Reddington 113K from April 24 - June 1.

SIRE

WLB TOP TIER 456G
WLB BULL 456G 5J
WLB 743T MAY 384X

DAM

ERIXON LAD 29G
WILC JARA 36J
WILC BLACK TARA 18B

BW	Adj.WW	Adj.YW	CE	BW	WW	YW	MK	MCE	MWW
75			11.4	1.7	73.6	105.8	23.9	5.6	60.7

Long, deep bodied bred that has been a standout since birth. A heifer that grandpa really liked for her overall power. Out of a first calf heifer that did a whale of a job. We used her sire on heifers and second calvers.

BRED HEIFER

WILC LARLA 3L

Purebred | Polled | Red | PG1483086 | WILC 3L | 2/1/2023

23



AI Bred to WILC Levi 41L on April 7. Exposed to Black Gold/GW Reddington 113K from April 24 - June 1. Observed bred to Black Gold/GW Reddington 113K on April 25 (Safe).

SIRE

LFE TRIUMPH 816A
LFE STRATTON 3094F
LFE RS AMBER 2140B

DAM

BOUNDARY RED ENTICER 82C
WILC JARLA 15J
WILC BLK DARLA 7D

BW	Adj.WW	Adj.YW	CE	BW	WW	YW	MK	MCE	MWW
81			8.8	3.8	71.7	104.9	26.3	3.2	62.2

Big barreled, broody female. Same cow line as WILC 2L, these females work.



SERVICE SIRE

BRED HEIFER

WILC TAYLOR 18L

Purebred | Polled | Black | BPG1484468 | WILC 18L | 13/1/2023

24



AI Bred to VDV Legend 14L on April 7. Exposed to Black Gold/GW Reddington 113K from April 24 - June 1. Observed bred to Black Gold/GW Reddington 113K on April 28 (Safe).

SIRE

ERIXON RELENTLESS 110D
WILC HARRY 17H
WILC MISS TANKER 1Z

DAM

IPU CROSBY 164Y
WILC MS SWIFT 103A
DBS TAYLOR 5W

BW	Adj.WW	Adj.YW	CE	BW	WW	YW	MK	MCE	MWW
98			5	5.8	82	125.1	22.5	4.6	63.5

Bid bodied female, dam has excellent udder.



SERVICE SIRE

BRED HEIFER

WILC LYNN 30L

Purebred | Polled | Black | BPG1484573 | WILC 30L | 22/1/2023

25



AI Bred to VDV Legend 14L on April 7 (Safe). Exposed to Black Gold/GW Reddington 113K from April 24 - June 1.

SIRE

SPRINGCREEK ALL IN 155Y
SPRINGCREEK OLYMPIAN 66A
SPRINGCREEK LINNE 33R

DAM

TCW COMMANDER 8D
YR BLACK ROSSLYNN 931G
YR RED ROSLYNN 222Z

BW	Adj.WW	Adj.YW	CE	BW	WW	YW	MK	MCE	MWW
88			4.9	5.1	81.3	110.3	13.9	4	54.6

Nice black blaze face bred, good thickness. Out of a big time producing female that has a top end bull calf this year.



SERVICE SIRE

BRED HEIFER

WILC LADYBUG 32L

Purebred | Polled | Red | Pending | WILC 32L | 23/1/2023

26



AI Bred to Erixon Asset 91J on April 7 (Safe). Exposed to Black Gold/GW Reddington 113K from April 24 - June 1.

SIRE

STF CRIMSON TIDE DZ87
OUTLAW TIDAL WAVE 954G
CROSSROAD BOBARINA 633B

DAM

RUST HENN RAMBLER 6003
TCW JELLYBEAN 5J
TCW GINGER 67G

BW	Adj.WW	Adj.YW	CE	BW	WW	YW	MK	MCE	MWW
72			-	-	-	-	-	-	-

Thick, deep bodied female. Looking for a female that's going to produce outstanding calving ease sires here's a great option.

BRED HEIFER

27

WILC LEXI 35L

Purebred | Polled | Black | Pending | WILC 35L | 25/1/2023



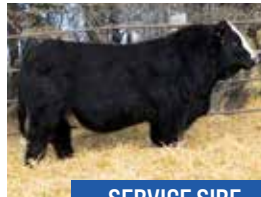
AI Bred to VDV Legend 14L on April 7 (Safe). Exposed to Black Gold/GW Reddington 113K from April 24 - June 1.

SIRE
DRAKE POKER FACE 2X
CMS SOCHI 307A
YR BLK PRIMADONNA 930W

DAM
CDM BROKER BOONDOCK 18B
MISS R PLUS 1538J
MISS R PLUS 7046E

BW	Adj.WW	Adj.YW	CE	BW	WW	YW	MK	MCE	MWW
81			-	-	-	-	-	-	-

Fancy feminine female, dam has excellent udder. Out of a first calving heifer



SERVICE SIRE

BRED HEIFER

28

WILC LORI 46L

Purebred | Polled | Red | PG1484469 | WILC 46L | 1/2/2023



AI Bred to WILC Levi 41L on April 7. Exposed to Black Gold/GW Reddington 113K from April 24 - June 1. Observed bred to Black Gold/GW Reddington 113K on April 26 (Safe).

SIRE
BLACK GOLD TAQA 124D
ANTRIM HURRICANE 6H
ANTRIM BROOKE

DAM
TNT BOOTLEGGER Z268
WILC FAITH 24C
DBS JASMINE 1U

BW	Adj.WW	Adj.YW	CE	BW	WW	YW	MK	MCE	MWW
84			4.9	4.9	72.3	100	29.4	3.7	65.6

Long made heifer, out of a big broody cow and a homo polled, non-diluter fullblood bull.



SERVICE SIRE

BRED HEIFER

29

WILC FIONA 62L

Purebred | Polled | Red | PG1484472 | WILC 62L | 16/2/2023



AI Bred to WILC Levi 41L on April 7 (Safe). Exposed to Black Gold/GW Reddington 113K from April 24 - June 1.

SIRE

FAIRVIEW PAYROLL 19D
FAIRVIEW REVENUE 157H
FAIRVIEW ZEUSETTE 157D

DAM

MRL 69D
WILC FIONA 37F
WILC HILLARY 9Y

BW	Adj.WW	Adj.YW	CE	BW	WW	YW	MK	MCE	MWW
102			4.6	5.2	76.2	113.6	32.1	-0.4	70.2

Big framed female out of a big framed cow with great udder. Out of another great homo polled, non diluter fullblood bull.



SERVICE SIRE

OPEN HEIFER

30

WILC MOLLY 8M

Purebred | Polled | Red | PG1483284 | WILC 8M | 10/1/2024



SIRE

R PLUS REDDINGTON 0143H
BLACK GOLD/GW REDDINGTON 113K
SVS BLK NIKKI 801F

DAM

ERIXON LAD 29G
WILC JANE 13J
WILC MS SWIFT 103A

BW	Adj.WW	Adj.YW	CE	BW	WW	YW	MK	MCE	MWW
78			9.6	1.9	76.8	114.2	25.9	6.4	64.3

Here's a stylish blaze face heifer calf. Soggy made heifer out of a good uddered cow. She is out of our junior herd sire That we purchased for Black Gold Simmentals. He is also the service sire to a few of our sale bred.



SIRE

OPEN HEIFER

31

WILC BABY OPAL 28M

Purebred | Polled | Red | PG1475327 | WILC 28M | 26/1/2024



SIRE

DOUBLE BAR D LIBERATOR 412E
ERIXON ASSET 91J
ERIXON LADY 15D

DAM

CIRCLE G HEAT WAVE 10H
HARVIECREST RED OPAL 2075K
CIRCLE G RED OPAL 005H

BW	Adj.WW	Adj.YW	CE	BW	WW	YW	MK	MCE	MWW
80			11.4	1	81.4	125.3	24.8	6.7	65.5

Baby Opal was our daughter's junior project this summer. She is out of a first calf heifer that we purchased out of the Agribition sale. They were showing the pair there and man were we impressed.

DEQUIER DEQUIER CATTLE CO.

Mike, Monique, Patrick, Kat & Ray Dequier
Haywood, MB | Mike Cell: 204-745-8750 | Kat Cell : 204-712-3111
dequiercattle@gmail.com

Welcome to the 44th PTSA sale. Thank you to all our past buyers, your support is sincerely appreciated. This year were back up in numbers, offering you 2 breds and 2 opens, three of which will be shown at ag ex.

This past year we used a bull we raised heavily at breeding, KRD Knockout. We are pretty happy with his offspring, he managed to paint some white on 75% of his calves, while maintaining a consistent set of calves. So consistent that most of the replacement heifer pen is off of him. All long bodied, wide topped and square hipped. Medusa is one of his offspring as well as Lotus is serviced by him.

Videos of heifers will be available for viewing prior to the sale. As always if you have any questions please don't hesitate to contact us, or even stop in!



OPEN HEIFER

KWD MAI TAI 2M

32

Purebred | Homo Polled | Red | Non-Diluter Pending | PG1462144 | KWD 2M | 2/1/2024



SIRE

CNS DREAM ON L186
REMINGTON RED LABEL HR
HS REFLECTIONS J34

DAM

MRL MISSILE 138C
X-T BLACK MISTRESS 7E
OAKVIEW BECKY 181B

BW	Adj.WW	Adj.YW	CE	BW	WW	YW	MK	MCE	MWW
84			6.2	4.4	75.9	105.4	24.4	1.6	62.4

This fancy cherry red baldy heifer is sure to catch your attention come sale day. One that was never supposed to leave the farm. She's smooth made in her front end, with loads of depth of body. Her dam has been a consistent producer for us, she ages like fine wine. No matter which angle you look at Mai Tai she's complete throughout.

OPEN HEIFER

KWD MEDUSA 3M

33

Purebred | Homo Polled | Homo Black Pending | BPG1462143 | KWD 3M | 8/1/2024



SIRE

WLB EL DORADO 3615C
HOLLYWOOD KNOCKOUT 8K
WLB 365C BOBBI-JO 400E

DAM

MRL 51C
KWD JEWEL 5J
WILC CAMARO 3C

BW	Adj.WW	Adj.YW	CE	BW	WW	YW	MK	MCE	MWW
72			6.3	4.2	77.7	112.4	17.1	2.8	56

An attractive black baldy heifer that commands your attention. She's the first calf crop off KO the bull we raised, shows you what he can do. Medusa is very stylish in her makeup, has plenty of depth with a good hind quarter. She's wide topped with plenty of length and hair.



SIRE

BRED HEIFER

HOLLYWOOD PRINCESS 22L

34

Purebred | Homo Polled | Hetero Black | BPG1454480 | KR22L | 16/2/2023



AI Bred to KWA Shamrock 151H on April 11, 2024 (Safe). No Exposure.

SIRE

MRL DISCOVERY 21A
MRL 51C
MRL MISS 689Y

DAM

HARVIE JDF SPLASH 108B
JFRS MS STYLE 45H
BLCC MISS RED ROCK 309D

BW	Adj.WW	Adj.YW	CE	BW	WW	YW	MK	MCE	MWW
60			7.7	4.1	79.1	117.8	21.8	5.8	61.4

Princess is a larger framed, wide topped female with a nice neck extension. She's out of a big bodied red blazed cow acquired from JR Simmentals. She will be the first one to greet you come sale day!

BRED HEIFER

HOLLYWOOD LOTUS 81L

35

Purebred | Homo Polled | Homo Black | BPG1441139 | KR28L | 12/1/2023



AI Bred to Hollywood Knockout 8K on May 24, 2024 (Safe). No Exposure.

SIRE

MADER WALK THIS WAY 224B
CMS STRUTTER 126J
CMS SODA POP 519C

DAM

LFE NIGHT HAWK 3013D
DHS NIGHTHAWK 86J
MRL MISS 9415G

BW	Adj.WW	Adj.YW	CE	BW	WW	YW	MK	MCE	MWW
92			10.9	1.6	79.4	115.6	23.2	4.2	62.9

Brood cow! Lotus is a heavy muscled female that's going to go on and raise you some powerful bull calves. She is a wide topped, deep bodied, big barreled, correctly made heifer who's easy to work with. Lotus is off of a first calf heifer acquired from Downhill Simmentals who knocked it out of the park.



SERVICE SIRE

VAN DE VELDE VAN DE VELDE CATTLE

Jared Van de Velde | Max Van de Velde
Mariapolis, MB | Jared 204.825.4305 | Max 204.825.4289
vdvcattle@gmail.com

Welcome to the 44th annual Pembina Triangle Simmental Association sale. This year we have 5 bred heifers on offer that we feel are very top quality females. We have confidence in these heifers that they are bred and developed right to go out and work in any herd they end up in. If you have any questions about our offering feel free to give us a call to discuss or feel free to stop in any time. The coffee is on and our fridge is always full.



BRED HEIFER

VDV MERLOT 44L

Purebred | Polled | Black | BPG1448799 | VDV 44L | 12/1/2023

36



AI Bred to VDV Legend 14L on April 4, 2024 (Safe). Exposed to NRD/DMJ Lawrence 23L April 18-May 15.

SIRE

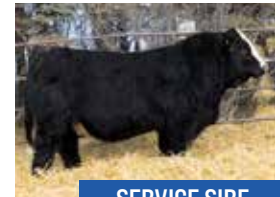
R PLUS YUMA 9087G
NUG MAGNATE 58J
SPRINGCREEK BROOKE 68Z

DAM

WS PROCLAMATION E202
VDV MERLOT 44J
MAF MERLOT 59C

BW	Adj.WW	Adj.YW	CE	BW	WW	YW	MK	MCE	MWW
65			14.6	-0.4	69.6	113	26	8.5	60.8

VDV Merlot 44L is our only solid black heifer on offer this year, and boy is she a good one. Merlot is a tank of a heifer that has a very smooth front end. She is starting to drop a nice tidy udder and is bred early to our 2024 high selling bull VDV Legend 14L, should be an exciting calf coming this January.



SERVICE SIRE

BRED HEIFER

37

VDV KARINE 27L

Purebred | Polled | Red | PG1448784 | VDV 27L | 1/1/2023



AI Bred to NUG Magnate 58J on April 4, 2024. Observed Bred to NRD/DMJ Lawrence 23L May 12 (Safe).

SIRE

HOOKS SHEAR FORCE 38K
WHL RED HEAT 1734E
CMS SODA POP 422B

DAM

MRL FULL HOUSE 40F
VDV KARINE 27J
CHERRY CREEK KARINE 27C

BW	Adj.WW	Adj.YW	CE	BW	WW	YW	MK	MCE	MWW
70			16.4	-1.5	71	101.6	26.9	9.1	62.4

VDV Karine 27L is a long, cherry red WHL Red Heat daughter born from a first time calver, and she did an amazing job raising her. Karine is the type of heifer that can go out and raise a top end heifer bull. Going back to MRL Full House 40F on the bottom side she has lots of calving ease in her pedigree.

BRED HEIFER

38

VDV AMANDA 76L

Purebred | Polled | Black | BPG1448797 | VDV 76L | 12/1/2023



AI Bred to Mader Night Shift 63K on April 5, 2024 (Safe). Exposed to NRD/DMJ Lawrence 23L April 18-May 15.

SIRE

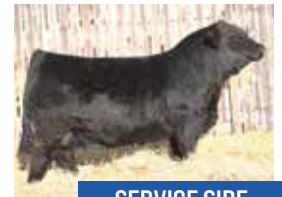
R PLUS YUMA 9087G
NUG MAGNATE 58J
SPRINGCREEK BROOKE 68Z

DAM

BIG SKY CAIN
VDV AMANDA 76E
SPRINGCREEK AMANDA 118A

BW	Adj.WW	Adj.YW	CE	BW	WW	YW	MK	MCE	MWW
75			11.5	1.2	64.9	104.8	25.2	6.5	57.7

VDV Amanda 76L is a big bodied black blaze faced heifer sired by our \$35,000 herd sire, NUG Magnate 58J. Magnate is proving himself to be a very consistent breeder in the heifer pen and also on larger framed cows. Amanda is a great example of a very functional female, she has length, lots of depth, and has an amazing temperament.



SERVICE SIRE

BRED HEIFER

39

VDV ANA 311L

Purebred | Polled | Red | PG1449110 | VDV 311L | 2/1/2023



Observed Bred to NRD/DMJ Lawrence 23L May 7 (Safe). Exposed to NRD/DMJ Lawrence 23L April 18-May 15.

SIRE

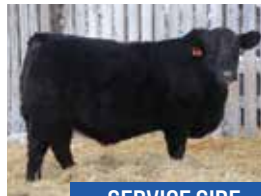
SPRINGCREEK LINER 56U
SILVER LAKE FREIGHTLINER 13F
SPRINGCREEK JOY 163Y

DAM

VDV CROWN ROYAL 24C
VDV ANA 311H
CONRAY ANABELLA 311A

BW	Adj.WW	Adj.YW	CE	BW	WW	YW	MK	MCE	MWW
84			6.8	3.7	84.8	125.4	24.3	5.3	66.7

VDV Ana 311L is a smaller framed heifer with a good udder developing underneath her. Anas grandam, Conray Anabella 311A, was bought out of the PTSA sale in the fall of 2014, and she just weaned off another high quality calf again this fall. Look here for a heifer that has longevity bred into her, you can also find MBJ Leila 169X in her pedigree.



SERVICE SIRE

BRED HEIFER

40

VDV LEILA 67L

Purebred | Polled | Red | PG1448809 | VDV 67L | 6/2/2023



AI Bred to SRH Hannibal 5H on April 4, 2024. Observed Bred to NRD/DMJ Lawrence 23L May 10 (Safe).

SIRE

R PLUS VENOM 4006B
MRL FULL HOUSE 40F
MRL MISS 4438B

DAM

PWK MR VISION 64W 9E
VDV LEILA 67H
SPRINGCREEK LEILA 67B

BW	Adj.WW	Adj.YW	CE	BW	WW	YW	MK	MCE	MWW
92			5.6	4.6	84.9	125.8	24.5	3.2	67

VDV Leila 67L is a dark red, brood type female in the making. The Leila cow family is one of the best cow families here at Van de Velde Cattle, MBJ Leila 169X was the first female we ever bought from Brian McCarthy back in 2014. She is found in a lot of pedigrees in our herd for good reason, check out the udder quality on this female.

SOUTHAM SOUTHAM SIMMENTALS

Rene Rouire, Sharon Southam & Family
 Elm Creek, MB | Home 204.436.3013 | Rene 204.745.8508 |
 Sharon 204.745.7881 | rsrouire@mymts.net

Welcome to the 44th annual Pembina Triangle Simmental Association sale. Always a pleasure to work with our fellow PTSA consigners and the Bohrsen Marketing team. Thank you to all past customers - your support is sincerely appreciated.

We offer a collection of four bred heifers selected from the top of our program. They represent strong cow families who consistently deliver high quality progeny. These gals carry early services to proven calving ease bulls – tried & true Otis Y43 and our herd sire Mr Knox. Quite impressed with the Mr Knox sired calves. They arrive unassisted, grow like weeds and have found their way in the keeper pen.

We welcome inquiries and on farm, pre-sale appraisal of our offering. Videos of the heifers will be available for viewing prior to the sale.

Plan to attend Cypress River on November 21, 2024 – Look forward to seeing you at the sale.



BRED HEIFER

41

SOUTHAM'S LINDOR 11L

Purebred | Hetero Polled | Red | PG1419329 | SOU 11L | 10/1/2023



AI Bred to OFL Otis Y43 on March 23, 2024 (Safe). No exposure.

SIRE

MAR MAC UTAH WHISKY 52E
 WLB GANGSTER 539G
 WLB 42Z GAILYN 364E

DAM

RENDEZVOUS 520A
 SOUTHAM'S ESTELLE 47E
 PERKS RHONDA 378U

BW	Adj.WW	Adj.YW	CE	BW	WW	YW	MK	MCE	MWW
82	578	956	9.6	1.3	76.4	107.6	35.2	4.3	73.4

A larger framed Gangster gal who possesses the goods to produce those high quality, heavy weight calves. Lindor contains a sprinkle of fullblood influence which is always a plus for milk production. Her dam posts a most reliable production record with females sold through the PTSA sales to Bitz Simmentals and Flying W Livestock. Lindor's early January Otis calf – male or female – will be a good one.



MATERNAL SIB



SERVICE SIRE

BRED HEIFER

SOUTHAM'S LIQUEUR 13L

Purebred | Homo Polled | Red | PG1419656 | SOU 13L | 12/1/2023

42



Natural service to MCR Mr Knox 126H 21K on April 12, 2024 [Safe]. No exposure.

SIRE

BBS FRONTIER F8
CIRCLE G INTELL 47J
CIRCLE G YONINA 717E

DAM

MAF RED RAMBO 131B
RENDEZVOUS MS RAMBO 387E
RENDEZVOUS MS KNIGHT 97C

BW	Adj.WW	Adj.YW	CE	BW	WW	YW	MK	MCE	MWW
80	478	940	14.7	0.2	60.9	100.7	25.9	10.9	56.4

Our first Circle G Intell 47J heifer to sell ... and she's a beauty! Liqueur is a stylish, dark cherry red female who will catch your eye. Compact and balanced in structure yet she possesses a feminine presence. Calving ease and maternal traits are consistent features in Liqueur's pedigree. Her service to Mr Knox sweetens this package ... I'd be hoping for a heifer calf. Maternal sisters have been purchased by Massinon Farms and Jeff Argue.



SERVICE SIRE

BRED HEIFER

SOUTHAM'S LENORE 19L

Purebred | Hetero Polled | Red | PG1419875 | SOU 19L | 14/1/2023

43



AI Bred to MCR Mr Knox 126H 21K on March 29, 2024 [Safe]. No exposure.

SIRE

SWAN LAKE BIG RED 85 B
SWAN LAKE DENALI 24E
SWAN LAKE BECKY 39A

DAM

RENDEZVOUS 520A
SOUTHAM'S EMOJI 32E
CONRAY X-TASY 2385X

BW	Adj.WW	Adj.YW	CE	BW	WW	YW	MK	MCE	MWW
84	558	966	10.4	2.8	74.9	106.6	34.4	8.8	71.9

An attractive Denali heifer who displays his stamp of structure and style. His daughters make dandy females ... heavy milking, attentive, productive cows. Lenore's granddam - Conray 2385X - remains in production demonstrating the longevity built into this female. Lenore should mirror the hard-working qualities of her dam and the genetic strengths in her pedigree. She will be a valuable addition to your herd. Look forward to an early January Mr Knox arrival.



SERVICE SIRE

Gilles Vuignier

204.750.2210 | skyridgefarms1983@gmail.com

Welcome to the 44th edition of the Pembina Triangle Sale. The Skyridge herd now consists of 150 registered Fullfleck Fullblood breeding females. If there are any questions on the open heifers consigned please contact Cody Haney of Bohrson Marketing or myself. Cody has seen both dams of these heifers and is very familiar with the cow herd. Thank you to all past, future and repeat buyers. Your confidence and support in the Skyridge program is much appreciated.



BRED HEIFER

SOUTHAM'S LIPSTICK 22L

Purebred | Homo Polled | Red | PG1420448 | SOU 22L | 18/1/2023

44



AI Bred to MCR Mr Knox 126H 21K on April 7, 2024 [Safe]. No exposure.

SIRE

SWAN LAKE BIG RED 85 B
SWAN LAKE DENALI 24E
SWAN LAKE BECKY 39A

DAM

OAKVIEW DAPPER 55D
SOUTHAM'S GLADYS 45G
BOYNECREST MISS 113T 130W

BW	Adj.WW	Adj.YW	CE	BW	WW	YW	MK	MCE	MWW
70	551	1034	15.7	-0.8	66.9	102.9	33.2	10.2	66.7

Lipstick ... a bred heifer we had no intentions of selling however, here she is!! A powerful, big volumed female whose pedigree is stacked with maternal traits. Lipstick is an easy doing and easy-going gal – one who makes a point of strolling over for a visit and a scratch. Seize the opportunity to add Lipstick and her mid-January Mr Knox calf to your herd – she's a wise investment. A full sister was purchased by Keven Kreutner at last year's PTSA sale.



SERVICE SIRE



FULL SISTER

OPEN HEIFER

45

SKYRIDGE DEANA 81L

Full Fleckvieh | Horned | Red | 1483639 | GJV 81L | 25/12/2023



SIRE

SIBELLE POL DARWIN 21F
SKYRIDGE VIKING 83J
SKYRIDGE REBECCA 1D

DAM

JNR THEORY
SKYRIDGE DEANA 13G
JNR DEANA

BW	Sept 14	Adj.YW	CE	BW	WW	YW	MK	MCE	MWW
91	870		1.6	7.7	82.6	112.2	37.5	0.1	78.8

Dark red, exceptional shape, long and smooth fronted heifer. Out of the JNR Deana cow family. Extremely productive cow family. Half sister retained in herd.



DAM



SIRE

OPEN HEIFER

46

SKYRIDGE KRYSTALL 74L

Full Fleckvieh | Polled | Red | P1483638 | GJV 74L | 20/12/2023



SIRE

SIBELLE POL DARWIN 21F
SKYRIDGE VIKING 83J
SKYRIDGE REBECCA 1D

DAM

JNR THEORY
SKYRIDGE KRYSTALL 27F
SKYRIDGE KRYSTALL 20C

BW	Sept 14	Adj.YW	CE	BW	WW	YW	MK	MCE	MWW
92	930		5	6.5	80.7	114.6	41.8	1.8	82.2

Smooth polled, extremely deep sided powerful soggy heifer. Out of the Krystall cow family (Anchor T Krystall 47G). Numerous progeny within the herd go back to this cow family. Half sister to SkyrIDGE Tracker 1H (owned by Zdan Farms).



DAM



MATERNAL SIB

TWIN OAK TWIN OAK LIVESTOCK

Gary, Josie & Mary Jane Robinson
Treherne, MB | 204.526.5010 | twinoaklimousin@hotmail.com

This year, at the 44th Annual Pembina Triangle Simmental Association Female Sale; Twin Oak Livestock excited to offer two black bred and three open red females from the top of our replacement pens. These are a true uniform group of high-quality females, ready to make an impact in your program. Be sure to stop by for a visit, to view our prospective females and enjoy a chat over a coffee.



OPEN HEIFER

47

TWL ELLIE MARIA 238M

Purebred | Polled | Red | PG1470501 | TWL 238M | 14/1/2024



SIRE

MAR MAC UTAH WHISKY 52E
WLB TOP TIER 456G
WLB 47Y FAE 343E

DAM

SKORS RED ENTICER 48Z
TWL LITTLE ELLIE 138B
KOP MS WHEATIE 138W

BW	Adj.WW	Adj.YW	CE	BW	WW	YW	MK	MCE	MWW
92	688		8.3	3.6	77.3	104.8	26.7	2.8	65.4

Ellie Marie is the direct daughter of a multi-provincial champion, TWL Little Ellie, a cornerstone of MJ's breeding program. Sired by WLB Top Tier: Ellie Marie brings both performance and pedigree. She is the spitting image of her maternal sibling TWL Kat, who sold here last year proving the strength of this genetic foundation to Triple R Simmentals. Ellie Marie is a fancy famine female with a wide top line, deep sided and impressive spring of rib. – definitely one to check out.



DAM



SIRE

OPEN HEIFER

48

TWL MAJESTIC 334M

Purebred | Polled | Red | PG1470508 | TWL 334M | 7/2/2024



SIRE

KWA ROCK 59F
NGDB ROCK 2H
NGDB LINDEE 873F

DAM

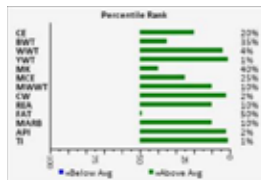
ERIXON GAME ON 42Z
WLB 42Z GAILYN 334E
WLB 254Z BARB 384B

BW	Adj.WW	Adj.YW	CE	BW	WW	YW	MK	MCE	MWW
94	668		8.4	4.2	93.7	146.6	31.8	7.5	78.7

Majestic is the longest spine heifer in our offering this year. She is well-balanced, muscular, and expected to have strong milking ability like her dam. Majestic comes from a standout cow family we acquired at the WBL 2020 dispersal sale. Another HGDB Rock 2H daughter, she inherits his known calving ease and calm disposition. This is the first time that we're making these genetics available, making Majestic a rare opportunity.



SIRE



SIRE EPD'S

BRED HEIFER

49

TWL LEXUS 85L

Purebred | Polled | Black | BPG1428810 | TWL 85L | 30/1/2023



Exposed to TWC Lucifer March 21 - May 4, 2024 (Safe). Exposed to Fairview Vault 22J May 5 - May 16.

SIRE

WS PROCLAMATION E202
ERIXON LAD 72J
ERIXON LADY 161G

DAM

MRL EL TIGRE 52Z
PERKS ROBIN 1085C
PERKS ROBIN 3585U

BW	Adj.WW	Adj.YW	CE	BW	WW	YW	MK	MCE	MWW
89	567	1057	6.6	3.6	84.2	119.2	24.5	3	66.6

Lexus is a striking jet-black female with incredible potential. She's long spined, wide-topped, yet refined in her overall feminine make-up. Lexus dam Perks Robin 1085C, was purchased from Perkin Land and Cattle Co. in 2016 by Mary Jane. Lexus is sired by Erixon Lad 72J. Lexus mirrors her dam's form and substance, showing tremendous promise to develop into a standout female in any program.



SERVICE SIRE



SIRE

BRED HEIFER

50

TWL LADYSLIPPER

Purebred | Polled | Black | BPG1428819 | TWL 435L | 9/1/2023



Exposed to BOBE Erixon Lad 72J from March 21 – May 16, 2024. Observed Bred on March 31 (Safe).

SIRE

KWA ROCK 59F
NGDB ROCK 2H
NGDB LINDEE 873F

DAM

TWL LEGENDARY 31B
TWL ELECTRIA 235E
PERKS CLEO 233Y

BW	Adj.WW	Adj.YW	CE	BW	WW	YW	MK	MCE	MWW
84	590	1217	8.7	3.3	84.4	127.1	27	6.4	69.2

This powerful, moderate framed female blends genetics quality with outstanding performance. Smooth made, with impressive length of body and spring of rib. Ladyslipper is another exceptional HGDB Rock 2H daughter and is a full sibling to TWL Megan 235M, who also sells in this sale as Lot 51. She's an all-around powerhouse ready to make her mark.



SIRE OF 50 & 51

OPEN HEIFER

51

TWL MEGAN 235M

Purebred | Polled | Red | PG1470513 | TWL 235M | 1/1/2024



SIRE

KWA ROCK 59F
NGDB ROCK 2H
NGDB LINDEE 873F

DAM

TWL LEGENDARY 31B
TWL ELECTRIA 235E
PERKS CLEO 233Y

BW	Adj.WW	Adj.YW	CE	BW	WW	YW	MK	MCE	MWW
90	629		8.6	3.3	84.6	127.3	27	6.4	69.3

Megan is a solid red, moderate-framed heifer with tremendous eye appeal. She boasts incredible depth of body, a smooth build, a strong top-line, and muscling that carried deep into her hindquarter. Sired by HGDB Rock 2H, Megan carries above average EPD across the board. Her dam is known for her flawless udder, consistently producing top of the line calves. Megan full sibling, TWL Ladyslipper, also sell in Lot 50. Don't miss this remarkable female.



DAM OF 50 & 51

DELIGHT DELIGHT SIMMENTAL

Gordon Delichte

Alphonse, MB | Home 204.836.2116 | Cell 204.526.7502
g.delichte@gmail.com

Welcome to the latest edition of the long running Pembina Triangle Simmental sale. I decided to do something a little different this year. The reds are homo polled, bred homo polled. And the full bloods are polled, with one being homo polled, both bred homo polled. All have caught to their early AI dates. This year has been more encouraging to be in the cattle business. Calf prices are holding to be the same as last year. The old cull cows and bulls are holding their good value. And around here, we have an abundance of feed for the winter. No need to blend in straw in our winter rations, this year.



BRED HEIFER

52

DELIGHT HUEGETTE 60L

Purebred | Homo Polled | Red | PG1474750 | LITE 60L | 15/1/2023



AI Bred to HFL Mind Game 1005J on April 11, 2024 (Safe). Exposed to Delight Holland 463H from May 13 - July 24.

SIRE

SVS BETTS 808F
OAKVIEW HURLEY 129H
PWK MS WISE GUY 59W 129Y

DAM

EGC ALLSTATE 147A
DELIGHT ALLIASHA 61D
DELIGHT MISS 61S

BW	Adj.WW	Adj.YW	CE	BW	WW	YW	MK	MCE	MWW
106			11.4	2.3	69.8	99.9	22.7	8.3	57.6

A good medium framed heifer here. She has that nice wide top hip and pin bones. She is also long, deep bodied and nice spring of rib. She also has shorter teats. If she sets up her udder like her dam, she will have a long lasting udder. Unfortunately I lost her mother in the pasture, late Sept. (rolled onto her back in a hollow)



SERVICE SIRE

BRED HEIFER

DELIGHT HUEGETTE 113L

Purebred | Homo Polled | Red | PG1474753 | LITE 113L | 15/1/2023

53



AI Bred to EGC Allstate 147A on April 1, 2024 (Safe). Exposed to Delight Holland 463H from May 13 - July 24.

SIRE

SVS BETTS 808F
OAKVIEW HURLEY 129H
PWK MS WISE GUY 59W 129Y

DAM

HOMESTEAD-T JAX 202B
DELIGHT JACKIE 213G
BLCC MISS PONDEROSA 213C

BW	Adj.WW	Adj.YW	CE	BW	WW	YW	MK	MCE	MWW
96			9.2	3.5	77.2	112.2	25.3	7.2	63.9

Very similar in body type as 60L. Wide top, hip pin bones, long, deep, good spring of rib. Also had those shorter teats. She does have more space between front and back teats.



SIRE



SERVICE SIRE

BRED HEIFER

DELIGHT HOLLEY 898L

Fullblood | Homo Polled | Red | P1474807 | LIT 898L | 2/2/2023

54



AI Bred to ROD Hight Perfect 60H on April 5, 2024 (Safe). Exposed to Oakview Hurley 129H from May 13 - July 24.

SIRE

DELIGHT ROLAND 64E
DELIGHT HOLLAND 463H
DELIGHT JACKIE 263D

DAM

VIRGINIA CHEEVERS 302F
DELIGHT CHELSEA 698J
DELIGHT JACKIE 498F

BW	Adj.WW	Adj.YW	CE	BW	WW	YW	MK	MCE	MWW
72			4.8	4.9	74.2	101.1	32.3	1.3	69.4

A homo polled, non diluter full blood here. She should be a very high % of Flech. Since my knowledge of flech genetics is limited, I will let the pros decide. She is smaller framed with a deep body and good spring of rib. Bred for a Jan. calf, to the homo polled bull Hight Perfect.



SERVICE SIRE



SIRE

BRED HEIFER

DELIGHT HOLLEY 915L

Fullblood | Polled | Red | P1474810 | LITE 915L | 24/1/2023

55



AI Bred to ROD Hight Perfect 60H on April 11, 2024 (Safe). Exposed to Oakview Hurley 129H from May 13 - July 24.

SIRE

DELIGHT ROLAND 64E
DELIGHT HOLLAND 463H
DELIGHT JACKIE 263D

DAM

MF MR. EVAN 14P
DELIGHT EVANLIE 915G
DELIGHT JULIETTE 915Y

BW	Adj.WW	Adj.YW	CE	BW	WW	YW	MK	MCE	MWW
73			5	4.9	73.3	100.4	30.9	1.5	67.6

A nice middle of road for frame. She is a polled FB, that a person can further develop a polled and homo polled program with. She also has a nice wide top. Has a nice long body and hip. A good deep body and spring of rib. A nice feminine head and shoulders. I plan to show her at Brandon Ag, Ex this fall.



SERVICE SIRE

HIGH SELLERS 2023

LOT 10

\$15,000

SOLD TO DOUBLE BAR D FARMS



LOT 36

\$14,500

SOLD TO SILVER LAKE FARMS



LOT 2

\$14,000

SOLD TO MAVV FARMS



LOT 31

\$12,000

SOLD TO CHERRY CREEK



THANK YOU

to our SPONSORS



Dale Air Services^{LT}
A Division of GJ Chemical Co. Ltd.



Squirrel Creek Seeds Ltd.
Retail supplier of seed, feed, forage plastics, and farm supplies.
Trent Friesen, General Manager
Cell: 204-871-6044
Email: trent@squirrelcreekseeds.com
Austin, MB, CA
Squirrel Creek Seeds
www.squirrelcreekseeds.com



415 1st Winkler, MB
Office: (204) 325-4244 Cell: (204) 362-2336
website: creeksideseed.com
Email: creeksideseed@gmail.com



INNOVATIVE PRODUCTS
ENHANCING YOUR NUTRITION PROGRAM
MAKING YOU MORE PROFITABLE
Contact our MB/SK beef territory managers to learn more:
Derek Reimer (204)371-9093
Jessica Hextall (204)901-3058
Terry Fehr (204)362-7830
trouw nutrition
a nutreco company

TOP VALLEY FEEDS



Embryo Transfer

- On Farm or In Clinic Embryo Transfer
- Non Surgical Embryo Collection & Implantation
- Embryo Freezing & Storage
- CETA Certified
- Agriculture Canada Accredited Mobile Lab



Office Tel (204) 822-3054
Cellular (204) 325-3635
embryo@mymts.net
David G. Hamilton, D.V.M.
Shelley Hamilton, R.V.T.

Van De Velde SEEDS


Max Van De Velde
Pioneer Sales Rep
204.825.4289
Mariapolis, MB





Phil Unrau
Beef/Bison Consultant
Cell: 431-771-4210
phil.unrau@bullseyefeeds.ca
Head Office
126 E CANAL GARDEN
STRATHMORE, AB T1P 1Y4
Toll Free: 1-833-210-8100
www.bullseyefeeds.ca



Nutrien Ag Solutions[™]
Cartwright
Seed, Fertilizer and Chemical
(204) 529-2674



New Rosedale Feedmill
FEEDING YOUR NEEDS



Jordan Dickson M.Sc., P.Ag.
Ruminant Nutritionist
204.841.4744
jdickson@nrfeedmill.com
nrfeedmill.com
Box 460
Portage la Prairie, MB R1N 3B7

DRUMMOND'S FARM SERVICES LTD.
P.O. Box 70, Holland, MB R0G 0X0
PH: (204) 526-2740
Cell: (204) 526-7671
Email: sales@drummondsfarm.com
www.drummondsfarm.com









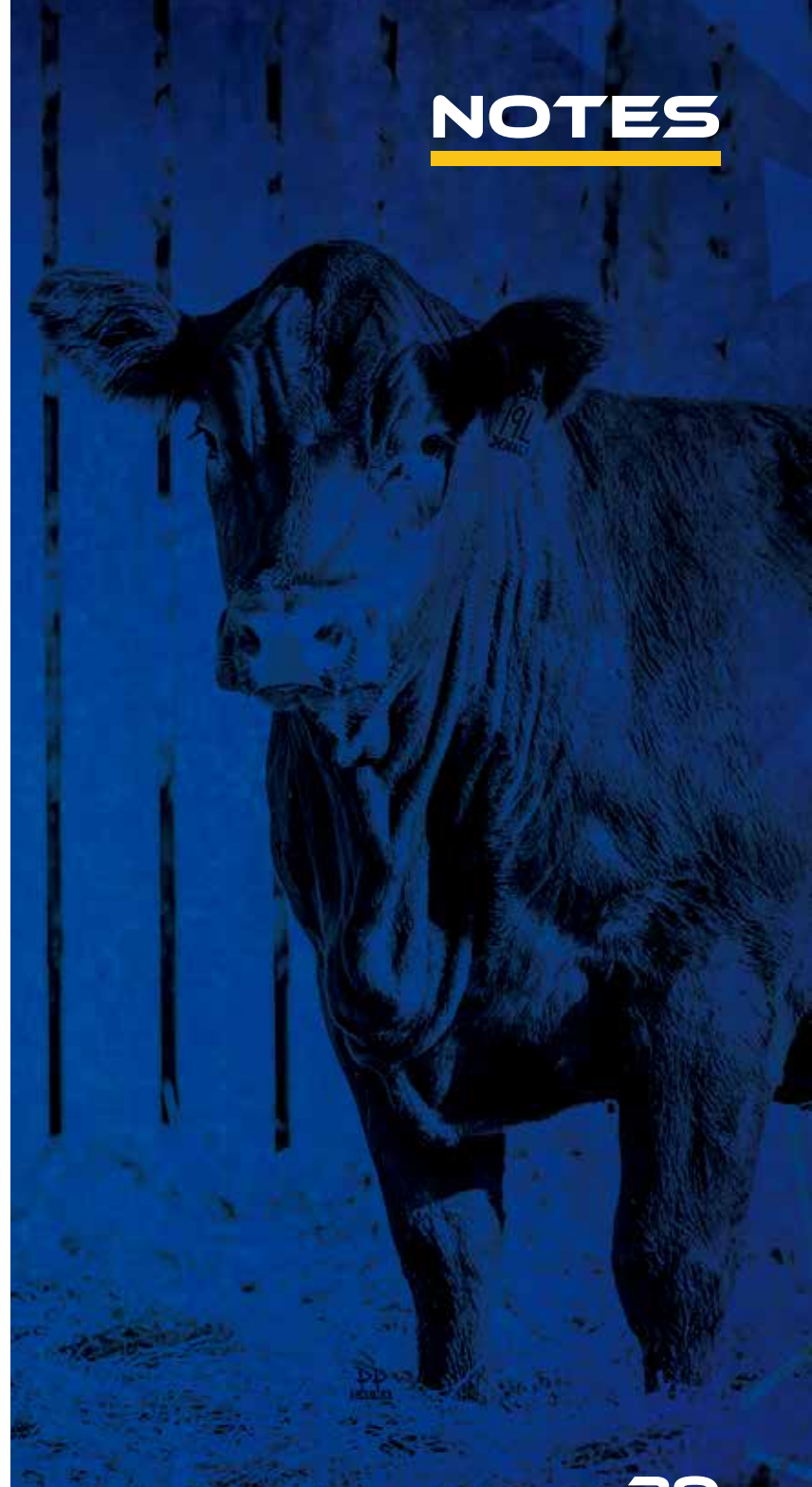





David Drummond
Sales



MORE THAN JUST FEED



RETURN UNDELIVERABLE MAIL TO



BOHRSON
MARKETING SERVICES

28336 TWP RD 320
MOUNTAIN VIEW COUNTY, AB
T4H 4M7



RETURN POSTAGE GUARANTEED
PORT DE RETOUR GARANTI

THANK YOU

to our **2023 BUYERS**

AG-LAND FARMS	LITTLE PERKS RANCH
ALLAN LINDAL	MADER RANCHES
AP SIMMENTALS	MARMAC FARMS
ASHWORTH FARM & RANCH	MATT REIMER
AUSTIN WYTINCK	MAVV FARMS INC
BALAMORE FARMS	MCINTOSH LIVESTOCK
BOHRSON MARKETING SERVICES	NORTHERN LIGHTS SIMMENTAL
CAMERON DODDS & BEAU JANSSENS	OAKVIEW SIMMENTALS
CHERRY CREEK FARMS	PERKIN LAND & CATTLE
CROCUS SIMMENTAL	PRAIRIE RIDGE SIMMENTALS
D. GITZEL	RAFTER J CATTLE CO
DOUBLE BAR D RANCH	RAMROD CATTLE CO
DOUBLE M LAND & CATTLE	SAWYER MORRISON
DOWNHILL SIMMENTALS	SCOTT & TINA PATTERSON
DYLAN ENNS	SILVERLAKE FARMS
FEHROCK FARMS	SOUTHAM SIMMENTALS
FERME CLAUDE	STEPPLER FARMS
FIRDALE SIMMENTALS & CALVERT	TAMMI YANKO
CATTLE CO	TIM DAVEY
FLATLANDS CATTLE CO	TRIPLE D SIMMENTALS
HANDFORD SIMMENTALS	TRIPLE R SIMMENTALS
JJ BAR CATTLE	TSN LIVESTOCK
KARA DEROCQUIGNY	VALLEYFIELD SIMMENTAL
KENNETH STOCKWELL	VAN DE VELDE CATTLE
KREUTNER FARMS LTD	
LIL CHICKS	