

NOVEMBER 27-28, 2024 – ONLINE WITH DLMS FARM GATE TIMED AUCTIONS



SALE RESULTS
Average -
\$10,672

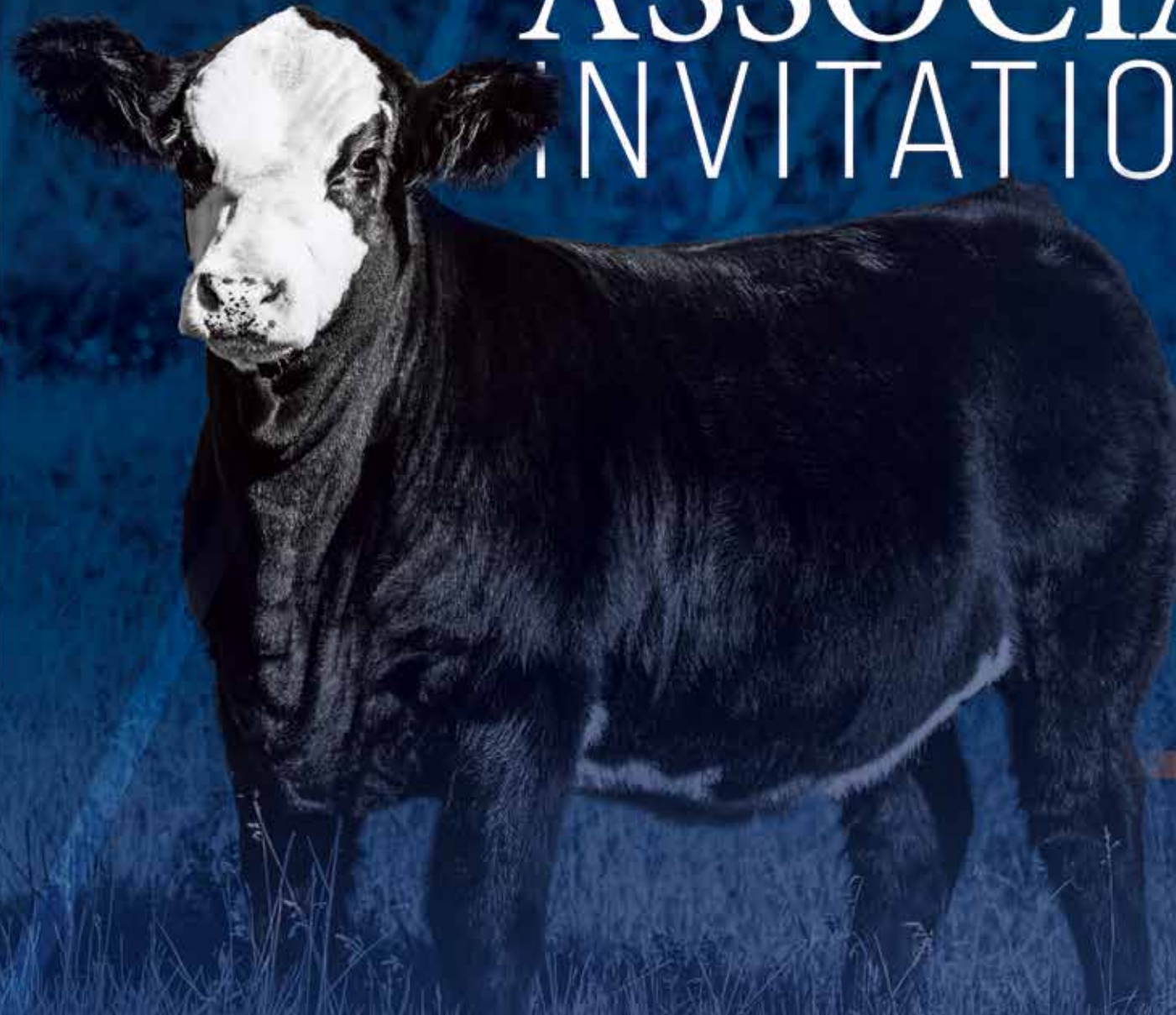
ASSOCIATE

INVITATIONAL

VOLUME 3

ASSOCIATE INVITATIONAL

VOLUME 3



NOVEMBER
27-28²⁰₂₄

SALE INFORMATION

ASSOCIATE INVITATIONAL VOLUME 3

BOHRSON MARKETING SERVICES

Scott Bohrson 403.370.3010
Rob Voice 306.270.6082
Taylor Richards 306.821.4169
Jaxon Payne 306.830.0456
Martin Bohrson 306.220.7901
Riley Bohrson 639.213.7777

ONLINE BIDDING

DLMS Farm Gate Timed Auctions
Mark Shologan 780.699.5082



LOCATION

All cattle will be available for viewing at Canadian Western Agribition November 25-30, 2024 in Regina, SK.

CATALOGUE DESIGN

Compass Creative
Madison Sibbald 587.581.2625

TERMS & CONDITIONS

The information printed has been supplied by the seller and believe to be accurate. Updated sheets and announcements will take precedence over any incorrect printed material. Cattle will sell under the standard terms & conditions put forward from CSA & BMS. These are available upon request.

DONATION LOT 17

Package of 3 embryos donated by Ashworth Farm & Ranch with all proceeds being donated to the Saskatchewan Young Canadian Simmental Association.

SCHEDULE OF EVENTS

MONDAY
NOVEMBER

25 Cattle available for viewing at
Canadian Western Agribition

TUESDAY
NOVEMBER

26 First Lady Classic from 12 - 4 pm
Presidents Classic from 12 - 4 pm

WEDNESDAY
NOVEMBER

27 Simmental Show from 8 - 3 pm
Associate Invitational Bidding Opens at 12 pm

THURSDAY
NOVEMBER

28 Associate Invitational Bidding Close Out
begins at 7 pm CST

*Join the consignors for socializing & supper during
sale close out in the CWA Simmental Barn*



WELCOME

FROM BOHRSON MARKETING SERVICES

Welcome on behalf of all of the consignors and our entire team at Bohrson Marketing Services to the 2024 Associate Invitational to be held online with DLMS Farmgate Thursday, November 28th. This is the 3rd annual event of this great sale and it is poised to be the deepest offering of Simmental genetics to date.

The Associate sale is a relatively new sale but has already proven itself to be one full of quality and predictability. Each and every year, the contributors to the Associate step up and offer their very best from the most powerful cow families and some of the most sought after sires in the industry. The proof is certainly in the pudding and we have seen that after just two successful Associate sales. One of the high sellers from the first Associate sale to LA Ranch had just recently raised the all breeds jackpot champion heifer at the Manitoba Ag Ex on her first try at production. The high seller from the second Associate sale was a dominant show heifer in 2024 for junior member Stella Mader winning many championships. There are many other examples of the success folks have had from Associate purchases and these are just an example of the type and kind that are available. Production powerhouses, fancy show heifers, they will be in spades for the 3rd annual sale.

Be sure to contact any of the consignors or our team at BMS to discuss this sale offering. All the cattle will be available to be seen at CWA during the week and will be on display. We look forward to discussing this exciting set of cattle.

*Best Regards,
The Bohrson Marketing Team*



SCOTT BOHRSON



TAYLOR RICHARDS



ROBERT VOICE



DARRYL SNIDER



JAXON PAYNE



MARTIN BOHRSON



NATE MARIN



CODY HANEY



RILEY BOHRSON



1 ASHWORTH FARM & RANCH
2 *Kelly & Janice Ashworth – Kyle & Kelsey Ashworth*
3 OUNGRE, SK
4 *KYLE* 306.861.9352 – *KELLY* 306.861.2013
ashworthfarmandranch@gmail.com

5 MILLINGTON RANCH
Dean and Gina Sentes
Duval, SK
DEAN 306.725.7268
millingtonranch@gmail.com

6 HORNER CATTLE COMPANY
7 *Jake & Laura Rawluk*
8 Minnedosa, MB
LAURA 204.868.5335
hornercattlecompany@gmail.com

15 ANDREW CATTLE CO.
Jeremy Andrew
Regina, SK
306.536.0954
jeremy@andrewcattleco.ca

12 CZECH-MATE LIVESTOCK
AJ & Andrew Sullivan – Jim and Gwen Smith
Carstairs, AB
ANDREW 403.875.6631 – *JIM* 403.818.3106
czechmatelivestock@gmail.com

16 DOUBLE BAR D FARMS
The Dimler Family
Grenfell, SK
LOGAN 306.451.7229 – *KEN* 306.697.7204
ldimler@live.com

11 FLYING W STOCK FARM
Colby & Carmen, Grady, Porter & Paisley Wolkowsky
Canora, SK
COLBY 306.563.7567 – *GRADY* 306.562.7167
flyingwstockfarm@gmail.com

14 GRONA FARMS
Dallas & Brittany Grona – Dale & Claudette Grona
Porcupine Plain, SK
DALLAS 306.278.8312
dallasgrona@hotmail.com

9 KCH CATTLE CO.
Ken & Kerri Hinsburg
Rapid City, MB
431.541.3245
kchchar@gmail.com

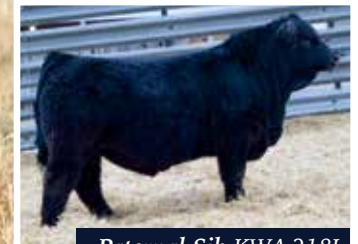
10 SCOTT LAND & CATTLE
Devon & Jennifer Scott
Arrowwood, AB
DEVON 403.485.0207 – *JENNIFER* 902.968.1285
MURRAY 403.485.8617
scottlivestock1997@gmail.com

CONSIGNORS

ASSOCIATE INVITATIONAL VOLUME 3



Service Sire Alpha



Paternal Sib KWA 218L

1
bred

KWA MS 007 201L

CA-BPG1482473 - KWA 201L - 30/1/2023 - HOMO POLLED - HETERO BLACK - PUREBRED

CANADIAN SIMMENTAL ASSOCIATION EPDS													
BW	Adj WW	Adj YW	CE	BW	WW	YW	Milk	MCE	MWWT	STAY	API	TI	
82			5.8	4.4	81.1	123.1	23.4	3.5	64	15.4	111.36	72.81	

RWR EASTWOOD 25F

S WESTGOLD 007
KHG WHITNEY 194E

LFE THE RIDDLER 323B

D KWA MS RIDDLER 204E
KWA MS IMPACT 68Z

I believe many breeders strive to breed cattle of similar type and when speaking to them you hear one statement often about top females; pretty and powerful. 201L holds true to that statement and is one we are quite proud to offer. 201L is backed by an impressive Riddler female that is always picked out while touring as well as some of the old legends, Pixie 75T and Charo 23Y. Her sire Westgold 007 was lost as a yearling after his first breeding season, but this spring had his coming out party, siring our standout black sire group. 201L herself has an attractive look and compliments that with an impressive amount of natural shape and expression. Bred early to Alpha our rock solid calving ease phenom, we feel there will be an opportunity for a quick ROI here. We had taken a year off from selling bred females last year and felt as if something was missing from our string. 201L is a great individual to relight the torch for us in offering our top bred heifer prospect.

AI Bred to Alpha April 1st, 2024, Exposed to Crossroad Fiddler 14K May 29-June 4th, 2024, Safe to AI.



Dam KWA 2F



Flushmate to Dam
KWA 13F

2

open

KWA MS AUTHORITY 64M

CA-PG1482471 - KWA 64M - 14/1/2024 - POLLED - PUREBRED

BW	Adj WW	Adj YW	CANADIAN SIMMENTAL ASSOCIATION EPDS									
			CE	BW	WW	YW	Milk	MCE	MWWT	STAY	API	TI
98			9.2	2.9	77.8	123.3	26.9	2.7	65.8	15.4	118.33	74.09

NF TRUMP S582

S CDI AUTHORITY 77X
CDI MS CROCKET 88T

LFE BS LEWIS 420B

D KWA MS RAVEN 2F
KWA MS ROCK 14X

A personal favourite of mine is this striking Authority daughter. Big and bold in her type with loads of character and eye appeal in this heavily built female. These Authority females have made a name for themselves across the breed, possessing incredible udders and an ability to produce like no others. We have had similar success with our Raven daughters and as of late they seem to continually out do themselves. A flushmate to the Dam of 64M raised KWA Holyfield 96J, a bull who has made a significant impact for the Noble and Waltz families. Another flushmate, was sold to Willerton Simmentals and has done tremendous things for them. 64M's Raven Dam was the leadoff in our second female production sale selling to Doug Benneweis who left her here in our care. She has raised two feature sons and has two daughters retained in the herd including a full sib that is ideal in her type. The maternal grand Dam of 64M is none other than our main matron, Ms Rock 14X. We have seen a number of her daughters recently come into the fold as our top individuals. After holding their mother in intense production for over 10 years, we feel confident when the day comes her legacy will be in tremendous hands.



\$12,000
Todd Simmentals



Dam R Plus Miss 1083J



*Maternal Granddam
Miss R Plus 3007A*

3
open

KWA MS WALK THE LINE 55M

UNR1482479 - KWA 55M - 13/1/2024 - HOMO POLLED - PUREBRED

CANADIAN SIMMENTAL ASSOCIATION EPDS

BW	Adj WW	Adj YW	CE	BW	WW	YW	Milk	MCE	MWWT	STAY	API	TI
108			10	2.5	101.1	149.9	24.2	6.1	74.8	11.4	116.77	86.5

MADER WALK THIS WAY 224B

R PLUS 5015C

S MADER WALK THE LINE 92J
IRCC DARLIN' 613D

D MISS R PLUS 1083J
MISS R PLUS 3007A

This is the first offspring to be marketed off the Miss R Plus 1083J female we purchased alongside the Dimler family back in December of 2022. At that time, we were looking for a female to replace the immortal Ms Rock 14X. We believe now as we did then, that 1083J will be able to do just that. An immensely impressive female with more dimension and mass than nearly any other female in the industry. We have big plans to feature 1083J heavily in our red program going forward. We feel 55M serves as a great example of what her Dam is capable of. She is massive in her makeup and as long as they come leading to her weigh up well ahead of her contemporary's. Her Dam's picture perfect udder impressed us while milking and we expect a similar quality udder from 55M. 55M bears a striking resemblance to both her Dam and another legend in her pedigree, the now deceased Darlin female who swept the breed by storm a few short years ago. 55M's sire, Walk The Line, was featured heavily last year all across the breed in his first year of production. It is hard to argue that a bull used as widely as he was that was as successful in siring top end cattle nearly everywhere he was used, is tremendously impressive. If you are looking for breed leading genetics look no further than 55M we feel she has plenty to offer a breed asking for a shot of performance put back into it.



\$13,000
Downhill Simmental



Maternal Sib
International 179H



Full Sib to Dam
KWA Italian 122E

4

open

KWA MS WALK THE LINE 22M

CA-PTG1482477 - KWA 22M - 7/1/2024 - HOMO POLLED - PUREBRED

BW	Adj WW	Adj YW	CANADIAN SIMMENTAL ASSOCIATION EPDS									
			CE	BW	WW	YW	Milk	MCE	MWWT	STAY	API	TI
92			12.4	1.8	100	151	28.7	8.4	78.7	13	127.47	89.27

MADER WALK THIS WAY 224B

S MADER WALK THE LINE 92J
IRCC DARLIN' 613D

MRL CAPONE 130B

D KWA MS CAPONE 83E
KWA MS ROCK 14X

Another maternal granddaughter of the great Ms Rock 14X this time out of the full sibling to the Red Italian bull who called Westway Farms home for many years and who did a great job raising high end bulls and females for them. 22M is a sweetheart who is long spined with a tremendous haircoat and a soft, easy keeping build. Her Dam entered our donor lineup this summer after years of high-end production raising multiple feature and high selling sons including KWA International 179H purchased by Kaelberer Ranch in North Dakota. We used International ourselves and sold a feature heifer through this sale last fall. With approximately 350 registered working females, we believe the right to be flushed should be held for a very select few. When a homegrown female earns that right as opposed to being given that opportunity, it is fulfilling. The Dam of 22M was IVF flushed for the first time this summer gifting us over 60 embryos between two split flushes. We expect those embryos to continue to push our red program ahead in the next few years. If you are looking to push your red program to new heights, I suggest taking a close look at this model young female with a world of potential.



\$10,000
Ryan Grindheim



Sire MRL Distinct 400J



Dam
Millington Scream 2006H

5
open

MILLINGTON SCREAM 2413M

CA-PG1466646 – DGS 13M – 30/1/2024 – HOMO POLLED – PUREBRED

CANADIAN SIMMENTAL ASSOCIATION EPDS

BW	Adj WW	Adj YW	CE	BW	WW	YW	Milk	MCE	MWWT	STAY	API	TI
75	728		7.6	3.3	89.8	132.4	20	2.3	64.9	12	105.6	76.37

BAILEY'S ONE OF A KIND

S MRL DISTINCT 400J
BBN MISS SMARTY 400D

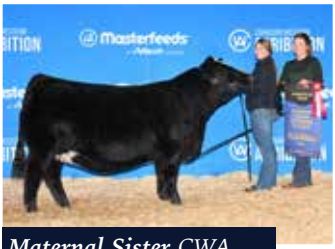
KWA LAW MAKER 59C

D MILLINGTON SCREAM 2006H
COME AS U R SCREAM 632D

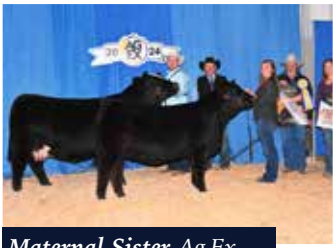
Scream 2413M has been a standout since she was a baby as she's always had that "look" to go along with her beautiful dark red color. Out of a super attractive big bodied Lawmaker/ Scream female and sired by our walking herd sire MRL Distinct 400J- a bull that we selected for his correctness, Dark red color and his "look at me" presence. 2413 puts it ALL together- Super correct, Powerful yet with a refined front end she is one we are proud to have raised and offer to the industry. 2413 is going to be a lot of fun for the new owners both as a high-end show calf and as a production cow with a proven and predictable pedigree that includes KWA Ms Rock 14X, RF Scream 215Z and IPU Red Western 49X.



\$21,500
Porter Simmentals



Maternal Sister CWA Reserve JR Champion



Maternal Sister Ag Ex Reserve Champion Female

6
open

HFL BRETТА ET 4021M

CA-BPTG1476283 - HFL 4021M - 6/1/2024 - HOMO POLLED - HETERO BLACK - PUREBRED

CANADIAN SIMMENTAL ASSOCIATION EPDS												
BW	Adj WW	Adj YW	CE	BW	WW	YW	Milk	MCE	MWWT	STAY	API	TI
87			12.1	3.2	102.7	157.7	23.3	8.3	74.7	15.8	142.48	93.56

MADER WALK THIS WAY 224B
S MADER WALK THE LINE 92J
 IRCC DARLIN' 613D

RUBYS TURNPIKE 771E
D DOUBLE BAR D BRETТА 461H
 DOUBLE BAR D BRETT 454B

While still a relatively new cow family for us, the Bretta's have had an incredible start and as the years go on and continue to be more and more valuable. Bretta herself has proven to be a true donor, she can produce them right, raise them right and has proven to be a tremendous flush cow. Her added frame and extension has been a positive breeding tool in her progeny. Bretta is one of the biggest, best footed cows we've ever seen. Embryos have sold for \$2600 and she is currently averaging 20 embryos per collection, quickly building her genetic mark. Her first calf crop averaged just over \$20,000, including a heifer sold from the first Associate to LA Ranch who was a many time all breeds champion, last years CWA reserve junior champion, and this year has come back with an incredible 5015C daughter at side. They were slapped the Reserve Champion Female at Ag-Ex and that calf at side was selected the All Breeds Little Lady Champion. 4021M herself has begun a winning resume, being selected the calf Champion in the Simmental Show at Ag-Ex. Study 4021M closely; you'll first notice her great big square foot, added bone and stoutness. All while being tied into a smooth made, long bodied and feminine package with a tidy skull and ample neck extension. Much like Bretta herself, 4021M has incredible rib shape and explosive volume. She stands proud and square on a wide base with ample chest width and volume. The genetic potential for this female excites us, combining a few of the breed greats into the mix such as Bretta herself, Turnpike, the great Brett cow, Darlin and Cobra. The production potential here is endless and 4021M has made herself an early favourite for us!

HORNERS RESERVE THE RIGHT TO ONE SUCCESSFUL FLUSH.



\$9,250
Downhill Simmental



Same cow family HFL
Rose 1016J



Same cow family HFL
Rose 3050L

7
open

HFL ROSE 4034M

CA-BPG1476284 - HFL 4034M - 10/1/2024 - HOMO POLLED - HOMO BLACK - PUREBRED

CANADIAN SIMMENTAL ASSOCIATION EPDS

BW	Adj WW	Adj YW	CE	BW	WW	YW	Milk	MCE	MWWT	STAY	API	TI
88			7.4	5.7	89.9	138.6	20.2	2.4	65.2	15.6	118.7	77.84

RF CAPACITY 742E

SRF SUPERCHARGED 9150G
RF CERTAINLY FLIRTIN 202Z

MRL 291F

DHFL ROSE 0100H
JACKSON ROSE 23D

One can't help but get excited for this genetic package, we really like to stack cow families and pedigree, genotype and phenotype wise this is one we really should be keeping. Another stretchy long bodied and really smooth made female. We really admire the depth of rib this female possess as well as, for us, her ideal hind leg structure with adequate depth of heel and flexibility on the move. Again, another female with that tidy feminine skull and extra neck extension and smoothness we are looking for. The cherry on top is her perfect blaze. In terms of cow power, it is nearly impossible to find a pedigree more stacked with maternal greats such as Rose, Heaven Sent, Edition 55W, Famous and Certainly Flirtin 202Z. In addition to this she is homo polled and homo black making her the type of female we'd look to for embryo production. 4034M has already had early success in the show world being the Reserve Heifer Calf Champion behind a Bretta daughter at a super competitive Manitoba Field Day, and was the Reserve Overall Female at the Black Gold Classic and a class winner at Ag Ex to start off her winning resume. The name Rose carries a lot of weight around here, and the roses have built an incredible resume of show champions, national champions, a supreme champion and many high sellers. The opportunity to find a Rose/202Z is rare, be ready to take full advantage here. Unfortunately this heifer lost the end of her tail during the commotion of our Recip program and had it stepped on over night.
HORNERS RESERVE THE RIGHT TO ONE SUCCESSFUL FLUSH



Sire LLW CARD True North

8

open

HFL SAVVY 4006M

CA-BPG1472021 - HFL 4006M - 4/1/2024 - HOMO POLLED - HOMO BLACK - PUREBRED

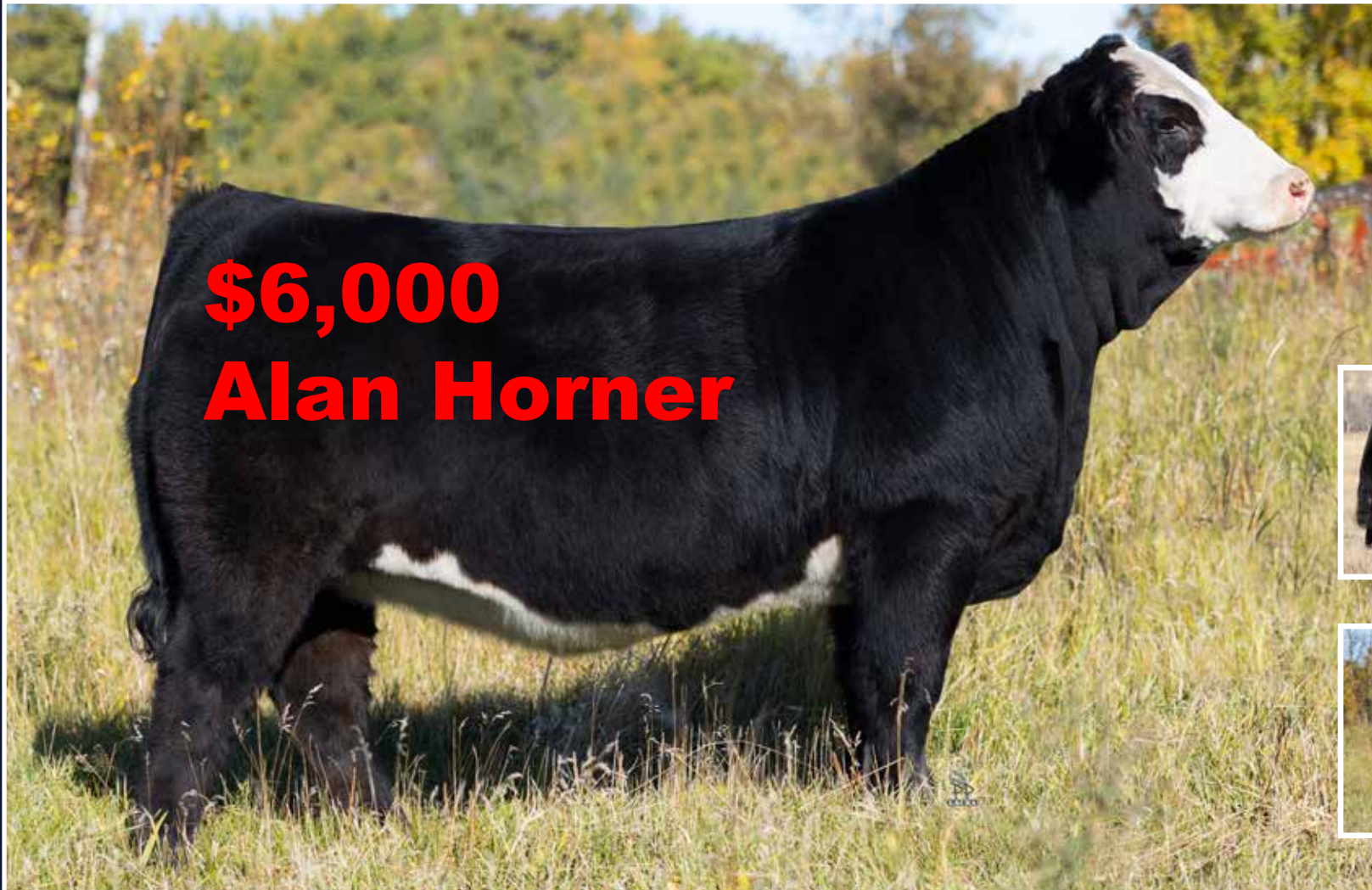
CANADIAN SIMMENTAL ASSOCIATION EPDS												
BW	Adj WW	Adj YW	CE	BW	WW	YW	Milk	MCE	MWWT	STAY	API	TI
68			10.8	2.5	86.1	131.4	23.3	4.7	66.4	10.2	109.67	77.79

GSC GCCO DEW NORTH 102C

RUBYS TURNPIKE 771E

SLLW CARD TRUE NORTH G71 **D**HFL SAVVY 2020K
COX ` S JOYS PRINCESS71E DOUBLE BAR D SAVVY 424E

An early favourite for us, 4006M has turned a lot of heads since birth. Stylish made, with an extra shot of stoutness and muscle, extra extension in her front third, with chest floor depth and width in a hairy baldie faced package with ample rib shape and base width 4006M is going to make a tremendous show heifer and come into life as a production cow quite handily. Her turnpike mother has earned herself a spot in the donor pen next year, knocking it out of the park producing 4006M as her first calf. She is a cow we really admire for her udder quality extra scale and the great big square foot that the turnpike females have to offer. 4006M comes from a long line of huge bodied power cows. With a modest 68lb birthweight, 4006M has done nothing but grow and has always been a front runner in the heifer calf pack.
HORNERS RESERVE THE RIGHT TO ONE SUCCESSFUL FLUSH.



Sire LLW CARD True North



Lot 11 Malibu

9
open

KCH MALIBU 401M

CA-BPG1461371 - KCH 401M - 1/1/2024 - HOMO POLLED - HOMO BLACK - PUREBRED

CANADIAN SIMMENTAL ASSOCIATION EPDS

BW	Adj WW	Adj YW	CE	BW	WW	YW	Milk	MCE	MWWT	STAY	API	TI
60			12.4	1.1	86.8	131.7	24.9	5.2	68.3	10.3	111.96	78.93

GSC GCCO DEW NORTH 102C

MADER WALK THIS WAY 224B

S LLW CARD TRUE NORTH G71 **D** KCH KISS THIS 203K

COX ` S JOYS PRINCESS711E

CMS TEMPTRESS 052H

Here is a female that you really have to admire for her big bold rib shape, width of top, overall volume and balance. She has beautiful udder development and teat placement. This unique female has had many admirers both in and out of the ring all summer. If you like your females with a bold look, with loads of rib shape, huge topped, a long level hip, tremendous hair coat and big fuzzy ears, then this one is sure to get you excited. Her dam and grand dam are very fertile, have strong feet, and beautiful udders with ideal teat size. Her sire True North is a proven calving ease bull that is siring attractive made daughters with gorgeous udders. We feel that this female has a very bright future.

Selling 1/2 interest. We offer the new partner 50% of all natural calves with no expenses. Flushes: Embryo's and expenses are to be split 50/50 with the new partner. Possession to be negotiated after the sale.



\$7,500
City View Simmentals



Full Sib



Full Sib

10
open

SCOTT MACY 32M

CA-BPTG1479156 - JDS 32M - 16/1/2024 - HOMO POLLED - HOMO BLACK - PUREBRED

CANADIAN SIMMENTAL ASSOCIATION EPDS												
BW	Adj WW	Adj YW	CE	BW	WW	YW	Milk	MCE	MWWT	STAY	API	TI
90	710		5.4	4.4	86.2	133.6	19.6	2.3	62.7	9.9	91.45	70.64

WFL WESTCOTT 24C

SRF CAPACITY 742E
RF FAMOUS 409B

MR HOC BROKER

DBRANDY BROOK CHA-CHING
JO-DREEN ZENNITH

32M comes right from the heart of our ET program. No pedigree has given us as much consistency and success as this one has. Either male or female this Broker dam can flat out get it done. Full sib heifer highlighted our 2023 show string and is turning into a cornerstone female for us. Full sibling bulls have been our high sellers 2 years running going to great programs. Super attractive female on the profile and on the move while still maintaining ample shape and power that we like to see in Simmental females. Guess work is done on this blaze face female.



Lot 14 Miss Ava



3/4 Sib

11
open

FLYING W MISS AVA 21M

CA-BPG1475728 - FWSF 21M - 2/1/2024 - POLLED - PUREBRED

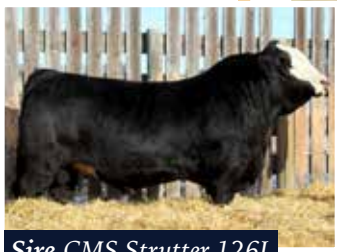
CANADIAN SIMMENTAL ASSOCIATION EPDS												
BW	Adj WW	Adj YW	CE	BW	WW	YW	Milk	MCE	MWWT	STAY	API	TI
72	644		7.7	4.2	85.9	118.5	18.3	4.4	61.3	14.2	109.9	74.49

BGS/BM CAPTAIN SCREAM 63D

MRL MISSILE 138C

S BLACK GOLD AVA'S SCREAM 102J **D** HWY 5 MISSY 52G
FSCI AVA B408 HWY 5 MISS EDGE 67C

Flying W Miss Ava 21L has been a standout since day one and has only continued to impress us and get better each day. She is a heifer that doesn't make it easy to part with. Her flashy blaze face makes for a really attractive individual. Her shape, dimension, depth of body, and great hair coat are attributes that make her a female that we strive to produce. Her 3/4 sibling Flying W Miss Pepper 30L did really well this summer at shows for Porter and hung quite a few banners at junior shows. They are both backed by Hwy 5 Missy 52G, a dam who is really making a name for herself in our herd by raising outstanding calves. Miss Ava has a presence in and outside of the show ring and is bred for consistency. This heifer is backed by the stout made MRL Missile 138C on her dams side and the flashy thick made Blackgold Ava's Scream 102J. We are very excited to see what this heifers future has in place.



Sire CMS Strutter 126J



Dam Deeg Ms Arrow 172J

12
open

CMS ARROW 471M

CA-BPTG1475188 - CMS 471M - 8/1/2024 - HOMO POLLED - PUREBRED

CANADIAN SIMMENTAL ASSOCIATION EPDS												
BW	Adj WW	Adj YW	CE	BW	WW	YW	Milk	MCE	MWWT	STAY	API	TI
97	748		9.5	5.1	99	147.9	26.3	6.6	75.8	14.5	114.61	81.19

MADER WALK THIS WAY 224B

S CMS STRUTTER 126J
CMS SODA POP 519C

RF CAPACITY 742E

D DEEG MS ARROW 172J
SPRINGCREEK ARROW 150B

Our consignment for the 2024 Associate Sale is a smokin' baldy with style to burn! Her dam is one of our top donor females, DEEG Arrow 172J, who was our pick of the 2022 SimPower sale. Reina & Papa maxed the budget at \$20,500 but as 172J continues to mature, she is well worth it! A Capacity daughter who possesses so much power and depth with a tremendous udder. Arrow 471M has the same high qualities as her dam with so much presence and performance - check out her WWT & YWT EPD's (top 2%)! She has tremendous body length and great leg set with a big strong foot structure. Her sire, Strutter, who was purchased by Downhill Simmentals for \$42,000 combines two breed leading sires in Walk This Way and Poker Face and his dam is a member of the infamous Soda Pop family. Arrow 471M.....powerful, proven genetics with "the look" that demands your attention!



Full Sib GFD Legend 10L



Sire Mader Walk This Way

14
open

GFD BLACK MAGIC 7M

CA-BPG1482655 - GFD 7M - 7/1/2024 - HOMO POLLED - PUREBRED

BW	Adj WW	Adj YW	CANADIAN SIMMENTAL ASSOCIATION EPDS									
			CE	BW	WW	YW	Milk	MCE	MWWT	STAY	API	TI
83			10.8	1.5	85.3	126	20.6	8.9	63.3	14.1	120.84	79.13

NCB COBRA 47Y

MRL OUTLAW 255D

S MADER WALK THIS WAY 224B **D** GFD LITTLE LADY 11G
MADER P IRON SUGAR 7X MILLINGTON LADY LINER 13E

There were some tough decisions to make when deciding which of our heifers to take to the Associate Invitational sale. GFD Black Magic 7M rose to the top of the list in fast order. Black Magic is built with calving ease and great growth numbers. Consistency and proven is the best way to describe the pedigree for this girl. Walk This Way on the top side of the pedigree brings the predictability while the MRL Outlaw daughter brings the strong maternal package with added milking and fleshing ability. 7M's dam comes from a purchase we made from Millington Ranch a few years back, Millington Lady Liner 13E. The results are astounding. We showcased a full sibling, GFD Legend 10L where he was crowned King of the Ring at the Grain Millers Harvest Showdown a year ago. We are excited for the calves to hit the ground here and at Jason & Skyler Hahn's place! If you're searching for that next front pasture female or one to trailer up and down the show road or both, Black Magic will be sure to add that abracadabra into whatever plan comes forward!



Dam Jetstream Bright N Classy



Maternal Sib
Miss R Plus 9236G

15
open

ANDREW CLASSY BET 1004M

CA-BPT1461008 - JRA 1004M - 07/01/2024 - HOMO POLLED - PUREBRED

BW	Adj WW	Adj YW	CANADIAN SIMMENTAL ASSOCIATION EPDS									
			CE	BW	WW	YW	Milk	MCE	MWWT	STAY	API	TI
79			9.9	4.3	84.7	121.5	22.9	8.3	65.3	13.7	107.61	72.80

BGS/BM CAPTAIN SCREAM 63D

SSVS BETTS 808F
WFL RED SAGE 506C

JF MILESTONE 999W

DJETSTREAM BRIGHT N CLASSY
RTC/JETS UPPER CLASS 40U

When we were invited to the Associate Invitational, we knew our first-ever purebred offering had to be exceptional. We believe Andrew Classy Bet 1004M fits the bill perfectly. This heifer embodies the vision we had when we started our Simmental herd by purchasing Jetstream Bright N Classy from the R Plus dispersal. She boasts a captivating shape and style, along with a commanding presence. Her stout build, strong base, and excellent front end extension make her a standout. The attractiveness of Betts-sired females is evident in her, and we are proud to have her lead off and represent our first set of sale calves.



Grandsire Double Bar D
Chandler 143A



Grandsire Sibelle Pol Synergy

16
open

DOUBLE BAR D DOTTIE 35M

CA-1469272 - RLD 35M - 16/1/2024 - HORNED - FULLBLOOD

CANADIAN SIMMENTAL ASSOCIATION EPDS

BW	Adj WW	Adj YW	CE	BW	WW	YW	Milk	MCE	MWWT	STAY	API	TI
89			2.7	5.4	73.1	102.5	31.7	1.3	68.3	13.4	92.1	64.58

SIBELLE POL SYNERGY 18F

S VIRGINIA RAMSAY 739H
VIRGINIA EVERLY 739E

DOUBLE BAR D CHANDLER 143

D DOUBLE BAR D DOTTIE 276F
DOUBLE BAR D DOTTIE 13Z

Length, Muscle shape, broodiness, and overall dimension all set on top of an incredible foot. Ramsay (Synergy) x Chandler combination. Many high sellers from Synergy at Virginia Ranch. BLL Creed, a Chandler 143A grandson is the hottest bull in the breed. Chandler daughters are foolproof. Ramsay daughters have a very maternal look. Sound and broody.



Sire of Embryos

KKH 12

17 MS ROCK x EXCLUSIVE

embryos

DAM PG746896 – KWA 14X

SIRE PG1220180 – KKH 123E

SYCSA DONATION LOT

SELLING 3 IVF Embryos – CAN & USA Qualified – 1 Guaranteed Pregnancy if implanted by a certified technician

JSEE MR CARISMA

S KKH EXCLUSIVE 123E

NUG TANGLE 60A

KWA RED ROCK 5T

D KWA MS ROCK 14X

KWA MS BARON 9U

We have been pushed for years to offer embryos for sale on Ms Rock 14X and we have resisted the urge to relinquish our grasp on one of the most exclusively held females in the industry. With that said, after multiple years where she was unable to be flushed the great folks at Bow Valley Genetics have been able to get her back into production for us. In doing so, we have been able to reload our inventory with her genetics and that leads us to what we think is the opportunity of a lifetime. Next summer the SYCSA will host the national YCSA show in our backyard of Weyburn and we wanted to do something special to ensure they will be able to put on the best show possible. With that said we are offering for the first time, three embryos off the exceptional Ms Rock 14X. These embryos are sired by a past walking bull we used successfully for years, KKH Exclusive 123E. He's sired ruggedly built sons and broody daughters who have done well in production. These embryos were being held as some of our final stock on 14X and we have yet to implant any ourselves so they are quite intriguing as they certainly could lead to the next high end red individual for our great breed. This is a once in a lifetime chance to not only do something great to give back to a youth organization doing wonderful work but also punch your ticket to possibly hit the jackpot in doing so.



DONATION **LOT 17** ALL PROCEEDS GOING TO SYCSA

“ On behalf of the Saskatchewan YCSA, we would once again like to thank all the consigners and people who are involved with the Associates sale. We would like to thank the Ashworth family for donating embryos in last years sale and once again donating embryos for this year’s sale. We greatly appreciate this generous donation as it helps us to continue to put on our provincial junior show. The money raised from this year’s lot will help cover our cost associated with putting on the YCSA national classic junior show which will be held in Weyburn, Saskatchewan, July 24-27, 2025. We have come a long ways in the past three years, and we look forward to continued growth and building relationships in the years to come.

This year we held our provincial junior Simmental Tiger Lily Classic show in Weyburn from July 19th-21st. We seen entries and cattle exhibited increase from the past year and people attending from across the province. Our 2024-2025 board consists of myself, Brodyn LaBatte as President, Vice President: Bailey McCormack, Treasurer: Darby McCormack, Secretary: Shelby Woytiuk and as well as our returning directors at large: Olivia Woytiuk, Zayne LaBatte, Porter Wolkowski, Grady Wolkowski, and Addison Barnett. We would also like to introduce our new board members: Katie Kolenosky, Emily Makey, and Lane Robinson. The adult advisors for our junior board are Dean Sentes and Hayley LaBatte and we can’t thank them enough for all their hard work they do for the board and show since they have stepped on. A big shoutout to Carolyn McCormack for all the hard work she has done with organizing the show and volunteering whenever needed. Our biggest thank you goes out to all our sponsors and volunteers who have helped us along the way. It takes a lot of work and people to make our show happen each year and without them we wouldn’t be able to make that possible. In the last three years we have seen exponential growth within the Saskatchewan YCSA and we are looking forward for the years to come. Next year holds something special as are hosting the 2025 YCSA national classic and we cant wait to see you all there!

*Sincerely,
Brodyn LaBatte
SYCSA President*

NOTES

**Added Lot 18 -
\$9,500
Red Top Livestock**



THANK YOU

TO OUR 2023 ASSOCIATE INVITATIONAL BUYERS

LOT 1 HFL Rose 3050L <i>Sold to</i> Mader Ranches	\$32,000	LOT 9 KWA Ms Estate 13L <i>Sold to</i> 4-J Ventures Ltd	\$7,500	LOT 18 Pearl Miss Red Hummer 705L <i>Sold to</i> Boundary Ranch	\$7,250
LOT 2 HFL Rose ET 3053L <i>Sold to</i> Carter Goudy	\$15,000	LOT 10 RHS Breaking the Rules 344L <i>Sold to</i> High Country Cattle Services	\$4,000	LOT 19 KWA Ms International 21L <i>Sold to</i> 4-J Ventures Ltd	\$14,000
LOT 3 HFL Erica 3004L <i>Sold to</i> Rockly Meadow Ranch	\$10,500	LOT 11 CHM Holly 10L <i>Sold to</i> Carson Friesen	\$8,250	LOT 20 Scott Ms Lune 4L <i>Sold to</i> Flying F Ranch	\$13,000
LOT 4 GFD Divine 20L <i>Sold to</i> MSE Land & Cattle Co	\$9,500	LOT 12 CHM Naomi 17L <i>Sold to</i> Ted Ammirati	\$8,750	LOT 21 Red Top Frankie 82L <i>Sold to</i> Ashworth Farm & Ranch	\$6,250
LOT 5 CMS Chorus Line 305L <i>Sold to</i> Hoffus Stock Farms	\$4,800	LOT 14 RWS Liberty 30L <i>Sold to</i> Ty-D Livestock	\$8,000	LOT 22 Donation Lot: 3 EMBRYOS KWA MS ROCK 22Z X IPU RED WESTERN 49X <i>Sold to</i> Red Top Livestock	\$4,500
LOT 6 CMS Fancy 302L <i>Sold to</i> Timm Cattle Co	\$4,500	LOT 15 KWA Ms Brooke 87L <i>Sold to</i> Section 17 7 & Flying W	\$8,750		
LOT 7 Millington Red Moon 2317L <i>Sold to</i> Ashworth Farm & Ranch	\$7,250	LOT 16 Boundary Galaxy 158L <i>Sold to</i> Timberwood Farms	\$10,000		
LOT 8 Millington Blk Moon 2310L <i>Sold to</i> High Bluff Stock Farm	\$6,250	LOT 17 KWA Ms Element 75L <i>Sold to</i> Downhill Simmentals	\$11,750		