



COUNTRY ROOTS
BULL SALE

LA RANCH & BAR M SIMMENTALS
MARCH 22, 2025
BC LIVESTOCK AUCTION MART | VANDERHOOF, BC



SALE INFORMATION

SALE DAY CONTACTS

LA RANCH

Luke Muehlen 250-567-7375

BAR M SIMMENTALS

Pat Muehlen 250-567-8135

BC LIVESTOCK

Kenny Alison 250-571-9045

Wade McNolty 250-398-0429

Wayne Pincott 250-395-6367

Wayne Jordan 250-319-0937

Mike Prichard 250-524-0681

BOHRSON MARKETING SERVICES

Taylor Richards 306-821-4169

AUCTIONEER

Wayne Jordan 250-319-0937

Wayne Pincott 250-395-6367

RINGMEN

Wade McNolty 250-398-0429

INSURANCE

BC Livestock offers a basic insurance on site

CANADIAN FARM INSURANCE

Monica Czech 780-318-3636

ONLINE

www.DLMS.ca

ACCOMMODATIONS

Homestead Inn & Suites 250-567-0170

DELIVERY

We offer free delivery to central points across BC and Alberta and will do our best to deliver right to your door.

IN-HERD SEMEN

LA Ranch & Bar M Simmentals retain the right to collect semen for in-herd use on any bull in the sale at the buyers convenience and sellers expense.

CATALOGUE PRODUCTION

Catalogue production by Bohrson Marketing.

TERMS & CONDITIONS

Cattle will sell under the standard Canadian Simmental & Canadian Angus sale terms & conditions, these are available on request.

SCHEDULE OF EVENTS

FRIDAY MARCH 21

Bulls will be at the sale grounds for viewing

SATURDAY MARCH 22

Lunch will be served at 12 pm

Sale starts at 1 pm

POLLED STATUS & COAT COLOUR CHART

SIRE	DAM	CALF
Homo Polled - the bull carries 2 copies of the polled gene.		
Homo Polled	Homo Polled	100% Polled
	Hetero Polled	100% Polled
	Horned	100% Polled
Hetero Polled - the bull is polled, but carries 1 polled gene and 1 horned gene.		
Hetero Polled	Homo Polled	100% Polled
	Hetero Polled	75% Polled, 25% Horned
	Horned	50% Polled, 50% Horned
Homo Black - the bull carries 2 copies of the black gene.		
Homo Black	Homo Black	100% Black
	Hetero Black	100% Black
	Red	100% Black
Hetero Black - the bull is black in colour, but carries one black gene and one red gene. Black is dominant to red, so the red colour is not expressed when it is paired with a black gene.		
Hetero Black	Homo Black	100% Black
	Hetero Black	75% Black, 25% Red
	Red	50% Black, 50% Red
Red - the bull carries 2 copies of the red gene. This example assumes the bull is diluter free.		
Red	Homo Black	100% Black
	Hetero Black	50% Black, 50% Red
	Red	100% Red

WELCOME

from Country Roots

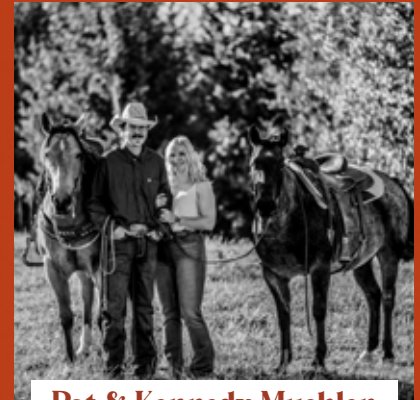
Welcome to the 3rd annual Country Roots bull sale. It's been a tremendous year to be in the cattle industry. It seems like every time we see new record high prices, it's only a few weeks until those records are broken with new record highs. 600 lbs steers are bringing around \$3000!!! There still isn't a ton of feed around but way better than last year and we have a good snow pack so we should be off to a good start this spring for moisture. We definitely didn't have an abundance of grass last summer but the cows did a good job raising their calves while still holding enough condition. We don't creep feed our calves so the cows have to work hard.

We strive to bring a big variety of bulls so that we have a bull to fit everyone's needs. This year we have added a few half blood bulls to the group and we are very excited to announce that for next year's sale we will have a Charolais division as well!!! Pat and Kennedy went out and purchased a very nice group of Charolais cows! Pat has a sharp eye for cattle so you can expect them to have an outstanding set of bulls for next year! We also did more embryo work last year than ever before implanting close to 100 embryos and with those ET calves now on the ground to say we are excited for next year's offering would be an understatement.

This is our 10th year calving purebred cows! In 2015 we calved 4 purebred Black Simmental cows. I never thought it would lead to this. We just thought it would be cool to have a few registered cows and maybe raise a couple bulls. Here we are 10 years later expecting around 200 purebred calves between our two operations. You just never know where life is gonna take you. You just need to enjoy the ride. On that note I would like to thank our customers for their continued support as none of this would be possible without you so we thank you from the bottom of our hearts, your confidence in our program is truly humbling. With that we take the responsibility of bringing you the best genetics we can possibly produce very seriously. We continue to invest in some of the best bulls in the country and



Luke & Amanda Muehlen
250.567.7375



Pat & Kennedy Muehlen
250.567.8135

spend all fall trying to source some very elite females that we feel can benefit our program. We do extensive AI and ET work to try and bring as many of those outstanding genetics to you as quickly as possible.

Well I could ramble on forever as cows are my favourite topic but let's get to this year's offering of bulls. We feel we have a nice group of uniform bulls again this year with our largest sire group out of the proven No Limits bull who's first daughters are calving now and they are nice uddered, good footed females that have been great mothers.

The bulls are fed a TMR ration created by our feed nutritionist with longevity of the bulls as our top priority. The ration consists of cereal silage, ground hay, barley and peas. We have had very good luck with ration as the bulls gain well but aren't over fed so they are ready to go to work. If you have any questions about the bulls please reach out to any of us or even better come see them for yourself anytime! We thank everyone who takes the time to look at our offering and hope to see you on sale day!

Best wishes,
The Muehlens

WELCOME

from Bohrsen Marketing

Welcome to the 3rd annual Country Roots Bull & Select Female Sale. The Muehlen families of LA Ranch and Bar M Simmentals have quickly built a reputable and trusted program based around functional cows and a strong set of ethics. They truly are some of the greatest people in the industry and have created operations that are a trustworthy source of quality genetics. Luke, Amanda with their girls and Pat and Kennedy truly believe in making and offering some of the very best they can to help suit the needs of many of the country's finest cattle operations and as you study this year's offering, you will come to the conclusion that this is their best work to date.

The mindset of building around functional, easy doing cows with great feet and strong udders has truly been reflective on this set of sale cattle. Cows with that credential check list in order will always leave you in the green and can be counted on year after year to bring a top end calf home. Add that to the utilization of some of the most powerful walking and AI sires in the industry and you have what LA and Bar M has before you here today. These bulls are easy doing, hairy, strong footed and able to work in any environment they are thrown into. The amount of repeat

customers we see pack the sale barn in Vanderhoof year after year just speaks volumes to the quality of the cattle available and the people that stand behind the product.

The 2024 born open papered heifers are an exciting set and represent the powerful herd matrons that work for LA & Bar M. They are sisters to the bulls and give you a great look into the maternal qualities the sale bulls will pass on. Take advantage here to build around a new cow family and breed them as you wish. They are a deep offering that we know you will appreciate!

We do hope you make plans to join us on sale day, but if for whatever reason your busy schedules keep you away, please do not hesitate to contact Luke, Pat or the BMS team to assist in evaluating the cattle and representing your bidding and buying needs. We hope to see you in Vanderhoof!

Best Regards,
The Bohrsen Marketing Team



SCOTT BOHRSON

TAYLOR RICHARDS

JAXON PAYNE

MARTIN BOHRSON

ROBERT VOICE

DARRYL SNIDER

NATE MARIN

CODY HANEY

RILEY BOHRSON



RF NO LIMITS 1112J

POLLED | BLACK

CA-BPG1365097 | GNR 1112J | 20/1/2021

BW	Adj WW	Adj YW	CE	BW	WW	YW	MK	MCE	MWW
90	861	1554	6.2	4.5	111.9	166.4	25.1	3.4	81.1

SIRE R PLUS 5015C
R PLUS YUMA 9087G
 MISS R PLUS 3007A

DAM WS STEPPING STONE B44
RUST MISS 6217D
 TNT MISS W31



\$30,000 Daughter

No Limits has been leaving a mark on the Simmental breed with offspring topping sales all across the country. He is one of those bulls that seems to work well on any cow. His calves have incredible growth, awesome foot quality and a great temperament. I don't know if I've seen a bull that makes his calves as consistently long bodied as No Limits does, you can pick his calves out just by the length of spine they have. His first set of daughters are now in production and they are making very nice cows.

SIRE OF LOTS 1-13



\$25,000 Daughter



\$34,000 Daughter



LAR TOP GEAR 11M
POLLED | BLACK

CA-BPG1463672 | LAR 11M | 8/1/2024

BW	Adj WW	Adj YW	CE	BW	WW	YW	MK	MCE	MWW
95	749	1279	6.4	3.7	105.7	151.1	20	2.1	72.9

SIRE R PLUS YUMA 9087G
 RF NO LIMITS 1112J
 RUST MISS 6217D

DAM LCDR WITNESS 541C
 BLACK GOLD MS CREAM SODA 212J
 HPF CREAM SODA Y010

CONSIGNED BY LA Ranch

Top end bull here. Coming from the great Soda cow family. His dam was purchased along with her full sister from Black Gold Simmentals and has turned into a very productive donor for us. The No Limits x Soda mating really clicked and we are already excited about his two full sib baby brothers born this winter that already look awesome! 11M is super stout made, he's wide based, wide topped, square hipped, awesome fronted and has style to burn. No extra white and that herd bull presence.

HOMO POLLED - HETERO BLACK



Dam Black Gold Ms Cream Soda 212J



Granddam HPF Cream Soda Y010



LAR SUNNY DAYS 51M

POLLED | BLACK

CA-BPG1464344 | LAR 51M | 1/2/2024

BW	Adj WW	Adj YW	CE	BW	WW	YW	MK	MCE	MWW
101	884	1433	7.4	4	108.3	158.1	28.7	4.7	82.9

SIRE R PLUS YUMA 9087G
RF NO LIMITS 1112J
 RUST MISS 6217D

DAM OH KAY GALILEO 19G
LEEWOOD BS SUNNY LADY 164J
 LEEWOOD BS SUNNY LADY 288G



CONSIGNED BY LA Ranch

One of the heaviest weaning bulls. He is easy to find in the pen. Lose hided, hairy, long spined bull. Has dam is a very moderate cow that out produces herself each year. We couldn't be happier with the No Limits sons and bulls like 51M is a prime example to that. He will add pounds to your calf crop.

HOMO POLLED



BRM LIMITS 44M
POLLED | RED

CA-PG1496972 | BRM 44M | 31/1/2024

	Adj BW	Adj WW	Adj YW	CE	BW	WW	YW	MK	MCE	MWW
	103	743	1253	6.3	6.3	111	169.1	23	2.7	78.5

SIRE R PLUS YUMA 9087G
RF NO LIMITS 1112J
 RUST MISS 6217D

DAM TNT 90 PROOF Z401
LEEWOOD BS BOOM SHELL 165J
 LEEWOOD BS 563 334F



CONSIGNED BY Bar M Simmentals

This dark red bull is one of the stoutest, deepest, boldest ribbed bulls in the entire pen. His dam is a nice cow coming from the Leewood Ranch in AB. His full brother is already a very impressive calf again this year. Check out the performance EPDs on this bull! He ranks top 1% of the breed for both WW and YW!

HOMO POLLED - DILUTER FREE



CONSIGED BY
Bar M Simmentals

32M reminds us so much of his full brother who sold through this sale last year. Long spined, wide topped, deep bodied from his chest to his flank and is so awesome to handle. Another bull that has some built in calving ease but still has some performance. Would work very well on some second calvers or smaller cows.

HOMO POLLED
HETERO BLACK



Full Brother



Dam



BRM PUSH THE LIMIT 32M

POLLED | BLACK

CA-BPG1483801 | BRM 32M | 26/1/2024

BW	Adj WW	Adj YW	CE	BW	WW	YW	MK	MCE	MWW
99	674	1191	10.8	1.1	85.3	124.7	22.5	5.5	65.2

SIRE R PLUS YUMA 9087G
RF NO LIMITS 1112J
RUST MISS 6217D

DAM KWA RED ITALIAN 122E
LAR MS NELLY 93H
WFL BLACK NELLE 824F



LAR NO LIMITS 28M

POLLED | BLACK

CA-BPTG1483536 | LAR 28M | 22/1/2024

BW	Adj WW	Adj YW	CE	BW	WW	YW	MK	MCE	MWW
97	722	1056	10	4.2	99	145.2	30.6	6.2	80.1

SIRE R PLUS YUMA 9087G
RF NO LIMITS 1112J
RUST MISS 6217D

DAM LAZYCREEK HOT SHOT 56A
MITCHELLS BLACK HOTTY 63D
MITCHELLS BLK DOWNEY 78A



CONSIGED BY
LA Ranch

28M is out of our donor cow from Mitchell Cattle Co. This cow has been a real corner stone female. Her calves are always top end and she is an absolute truck of a cow. We have many of her daughters working in the herd. 28M has two flush sisters in this sale and we also sold one last fall at FNL. Check out his awesome EPD profile as well!

HOMO POLLED
HOMO BLACK



Full Sister



CONSIGED BY
LA Ranch

Another bull that has a full sister selling in this sale. We can't say enough good about this bulls dam, we just love everything about her. Just have a close look at her picture and you'll see why. 29M is a soft made bull with lots of extension through that front third, is bold ribbed and very well balanced.

HOMO POLLED
HOMO BLACK



Dam



LAR CITY LIMITS 29M
POLLED | BLACK

CA-BPTG1483526 | LAR 29M | 23/1/2024

BW	Adj WW	Adj YW	CE	BW	WW	YW	MK	MCE	MWW
108	750	1198	8.3	2	90.1	131.4	21.4	4.1	66.4

SIRE R PLUS YUMA 9087G
RF NO LIMITS 1112J
RUST MISS 6217D

DAM TL LEDGER
C-D ABOVE & BEYOND 0325
SVF ABOVE & BEYOND T87



BRM NO LIMITS 4M
POLLED | BLACK

CA-BPG1457830 | BRM 4M | 2/1/2024

BW	Adj WW	Adj YW	CE	BW	WW	YW	MK	MCE	MWW
104	756	1241	10	4.6	94.3	131.2	27.3	5.4	74.5

SIRE R PLUS YUMA 9087G
RF NO LIMITS 1112J
RUST MISS 6217D

DAM BLACKSAND BAYSTREET 18A
XBAR BLACK YAMA 18D
XBAR YAMA 1Y



CONSIGED BY
Bar M Simmentals

This bulls dam just keeps cranking out the good ones. 4M is a full brother to one of last years high selling bulls for 17,000. So much good in this bull. Super sound structured and easy moving, large framed bull with tons of hair, and so nice to handle.

HOMO POLLED
HOMO BLACK



Dam Udder



Full Brother

8



9



LAR NO LIMITS 18M
POLLED | BLACK

CA-BPRS1502498 | LAR 18M | 16/1/2024

BW	Adj WW	Adj YW	CE	BW	WW	YW	MK	MCE	MWW
104	770	1431							



LAR NO LIMITS 19M
POLLED | BLACK

CA-BPRS1502499 | LAR 19M | 17/1/2024

BW	Adj WW	Adj YW	CE	BW	WW	YW	MK	MCE	MWW
90	648	1227							

SIRE
R PLUS YUMA 9087G
RF NO LIMITS 1112J
RUST MISS 6217D



LAR NO LIMITS 24M
POLLED | BLACK

CA-BPRS1502500 | LAR 24M | 20/1/2024

BW	Adj WW	Adj YW	CE	BW	WW	YW	MK	MCE	MWW
82	756	1335							



LAR NO LIMITS 25M
POLLED | BLACK

CA-BPRS1502501 | LAR 25M | 21/1/2024

BW	Adj WW	Adj YW	CE	BW	WW	YW	MK	MCE	MWW
99	636	1172							

DAM
ANGUS/ANGUS

10



11



CONSIGNED BY
LA Ranch

What an incredible set of flush brothers. Their donor dam is our favourite Angus cow and we just couldn't help but flush her to No Limits and boy are we glad we did. These half blood bulls are all very good, although all different in there own way the quality is very consistent throughout this set of ET brothers. 76D is one of the biggest bodied cows I have ever seen and has an incredible udder. If your in the market for a Sim Angus bull these guys need to be on your list.



Dam



CONSIGED BY
LA Ranch

Big hipped long spined bull that is deep sided and carries that back quarter down his leg so well. This bull is hard to poke a hole into and is backed by an incredible EPD profile being well above average in 10 of the 13 traits.

HOMO POLLED
HETERO BLACK



Dam with last years calf



LAR RADAR 7M
POLLED | BLACK

CA-BPG1458258 | LAR 7M | 4/1/2024

BW	Adj WW	Adj YW	CE	BW	WW	YW	MK	MCE	MWW
81	636	1209	10.8	1.2	87.1	137.8	18.2	6.3	61.8

SIRE R PLUS YUMA 9087G
RF NO LIMITS 1112J
RUST MISS 6217D

DAM WLB BOUNTY HUNTER 365C
WJS MS BOUNTY HUNTER 142J
CIRCLE G BLK CARLA 969G



LAR NO LIMITS 3M
POLLED | BLACK

CA-BPG1457703 | LAR 3M | 2/1/2024

BW	Adj WW	Adj YW	CE	BW	WW	YW	MK	MCE	MWW
111	681	1318	4.4	5.6	94.4	145.8	24.6	2.6	71.8

SIRE R PLUS YUMA 9087G
RF NO LIMITS 1112J
RUST MISS 6217D

DAM PM SURE BET 1'14
LAMS DESTINY'S BET 8E
LGW MS RANCH HAND 3W



CONSIGED BY
LA Ranch

Well balanced bull out of a top producing cow. His full brother was a feature in last years sale. No Limits is doing such a good job making these consistent top quality sound functional bulls.



Dam



Full Brother



RFS HEAVY HITTER H45

POLLED | BLACK

CA-BPRS1368874 | FGN 45H | 3/3/2020

	Adj BW	Adj WW	Adj YW	CE	BW	WW	YW	MK	MCE	MWW
	10.1	3.7	114.9	179.3	23.6	3.8	81.1			

SIRE CDI MAINLINE 265D
LCDR IMPACT 134F
 WS MISS SUGAR C4

DAM REMINGTON LOCK N LOAD 54U
BCLR MISS BALDY E704
 WS MOTHER LODE W21

Heavy Hitter is an AI sire that we are using who left us with a awesome set of big stout bulls and nice females. The calves have lots of grow and look, they are big middled with lots of muscle, hair and wide tops. His daughters should be awesome females and we are very excited to get them into production.

SIRE OF LOTS 14-16



Dam BCLR Miss Baldy E704



Granddam WS Mother Lode W21



LAR KNOCK OUT 14M

POLLED | BLACK

CA-BPG1463856 | LAR 14M | 13/1/2024

BW	Adj WW	Adj YW	CE	BW	WW	YW	MK	MCE	MWW
102	789	1325	7	6.2	108.2	159.2	23	2.7	77.1

SIRE LCDR IMPACT I34F
RFS HEAVY HITTER H45
 BCLR MISS BALDY E704

DAM R PLUS VENOM 4006B
MISS R PLUS 1212J
 MISS R PLUS 4324B

CONSIGNED BY LA Ranch

The R Plus cows have worked so well for us. This bulls second calver dam, from the R Plus dispersal did a whale of a job on this bull, she has an incredible udder and is one of those cows that always catch your eye. 14M has so much presence and style. He's stout made, has tons of middle and is sound on the move. This is a bull that we are very proud of and excited to have on offer.

HOMO POLLED - HOMO BLACK



Dam Miss R Plus 1212J



BRM HEAVY WIEGHT 17M
POLLED | BLACK
 CA-BPG1483797 | BRM 17M | 15/1/2024

Adj	Adj								
BW	WW	YW	CE	BW	WW	YW	MK	MCE	MWW
94	766	1270	11.6	2.7	100.9	147.8	26.5	4.4	77

SIDE LCDR IMPACT I34F
RFS HEAVY HITTER H45
 BCLR MISS BALDY E704

DAM SKORS HIGH ROLLER 34C
BEE KASSIA 140J
 SKORS KASSIA 14G



Dam Bee Kassia 140J

CONSIGNED BY Bar M Simmentals

This bull is hard to miss. Big and stout with that herd bull look. Real wide topped, wide based, big square hip on him and lot of middle. His dam is a beautiful moderate framed, easy doing cow with a great udder and very good feet. We are really happy with the heavy hitter calves and 17M is a perfect example of why.

HETERO POLLED – HOMO BLACK



CONSIGED BY
LA Ranch

One of only 3 Heavy Hitter bulls in the sale. His dam was purchased out of the iconic R Plus dispersal and has worked very well for us. She's a hard milking heavy haired moderate cow that already put a bull through last years sale as well.

HETERO POLLED
HOMO BLACK



Dam



Maternal Brother



LAR HEAVY HITTER 9M
POLLED | BLACK
CA-BPG1463668 | LAR 9M | 6/1/2024

BW	Adj WW	Adj YW	CE	BW	WW	YW	MK	MCE	MWW
101	724	1297	9.7	3.7	95	143	23.7	3.1	71.2

SIRE LCDR IMPACT 134F
RFS HEAVY HITTER H45
BCLR MISS BALDY E704

DAM R PLUS 7141E
MISS R PLUS 9482G
MISS R PLUS 3155A





RS **TER-RON LIMITLESS 128J**
POLLED | BLACK
 CA-BPG1359841 | HFX 128J | 12/2/2020

BW	Adj WW	Adj YW	CE	BW	WW	YW	MK	MCE	MWW
82	632	1362	11.9	0.3	71.5	109.8	20.1	8.9	55.9

SIRE JF MILESTONE 999W
WHF LIMITLESS B011
 WHF SIERRA 245S

DAM SKORS VISION 138C
TER-RON PAIGE 770E
 TER-RON PAIGE 470B



Sire WHF Limitless B011

We purchased Limitless as a calving ease bull to breed our heifers to. He was the high selling Simmental bull at the Ter-ron sale that year. He has calved very well for us the calves come small and easy and have a real nice look to them. We are very excited about the females as we expect them to be exceptional cows, very feminine with a real maternal look. Limitless is one of the best footed bulls we have ever seen and has passed that onto his offspring.

SIRE OF LOTS 17-20



CONSIGED BY
LA Ranch and Bar M

Nice baldie Limitless son that is easy to spot in the pen. Wide based, wide topped, tons of hair, and beautiful front end on this bull. Real soft made with lots of body.

HOMO POLLED



LAR BRM LIMIT 42M

POLLED | BLACK

CA-BPG1464343 | LAR 42M | 30/1/2024

BW	Adj WW	Adj YW	CE	BW	WW	YW	MK	MCE	MWW
89	692	1209	8.7	2.3	77.6	116.7	20.4	5	59.2

SIRE WHF LIMITLESS B011
TER-RON LIMITLESS 128J
TER-RON PAIGE 770E

DAM LRX BROCKER 43D
LAR MISS 152K
MRL MISS 7397E



BRM LIMITLESS 43M

POLLED | BLACK

CA-BPG1483840 | BRM 43M | 31/1/2024

BW	Adj WW	Adj YW	CE	BW	WW	YW	MK	MCE	MWW
93	753	1276	10.7	1.3	82.1	124.1	27.2	6.4	68.3

SIRE WHF LIMITLESS B011
TER-RON LIMITLESS 128J
TER-RON PAIGE 770E

DAM ROBB WARRIOR 91H
BRM FLOWER 55K
LAMS RED FERN 100H



CONSIGED BY
Bar M Simmentals

These Limitless sons have so much style and look to them. 43M is double bred calving ease with his dam being sired by Warrior. He is real smooth shouldered and and narrow headed.



CONSIGED BY
LA Ranch

Another bull with lots of calving ease. Big birth to weaning spread. 21M is a sharp looking bull. Lots of presence and very well balanced. His dam is an awesome uddered broker daughter. The broker bull left us with an exceptional set of females that wish we had more of.

HOMO POLLED
HOMO BLACK



LAR LIMITATIONS 21M

POLLED | BLACK

CA-BPG1464274 | LAR 21M | 18/1/2024

BW	Adj WW	Adj YW	CE	BW	WW	YW	MK	MCE	MWW
85	723	1272	11.2	1.6	71.2	102.9	21.6	7.3	57.2

SIRE WHF LIMITLESS B011
TER-RON LIMITLESS 128J
TER-RON PAIGE 770E

DAM LRX BROCKER 43D
LAR BEAUTY 78K
ACC BEAUTY 17G



LAR LIMITLESS 6M

POLLED | BLACK

CA-BPG1463850 | LAR 6M | 2/1/2024

BW	Adj WW	Adj YW	CE	BW	WW	YW	MK	MCE	MWW
86	728	1288	13.4	0.2	80.1	123.2	25.6	8.7	65.7

SIRE WHF LIMITLESS B011
TER-RON LIMITLESS 128J
TER-RON PAIGE 770E

DAM ROBB WARRIOR 91H
LAR MS WARRIOR 71K
LAR 42H



CONSIGED BY
LA Ranch

Built in calving ease without sacrificing performance. 6M started out with a modest 86 lbs BW and weaned at almost 750 lbs. His sire has been a sure fire calving ease bull for us and his grand sire is the great Warrior bull who has just been an exceptional breeding piece for us.



Grandsire



LAR BRM CALIBER 36M

POLLED | BLACK

CA-BPTG1483528 | LAR 36M | 26/1/2024

BW	Adj WW	Adj YW	CE	BW	WW	YW	MK	MCE	MWW
110	934	1483	7.7	5.9	109.5	165.5	13.4	5	68.2

SIRE NGDB STRUCTURE 34D
RF CALIBER 014G
 RF NOT JUST A FLIRT 404B

DAM MR CCF 20-20
C-D ALLEY 0721
 WHF/PRS/HPF ALLEY 247Y

CONSIGNED BY LA Ranch & Bar M Simmentals

Big time performance bull here. Check out his WW he was our heaviest weaning bull by quite a bit. He ranks in the top 2% of the breed for WW and YW on his EPDs. His sire, Caliber, is one of the most popular bulls in Canada and for good reason his calves are consistently good. His dam is a beautiful donor cow that just keeps cranking out the good ones.

HOMO POLLED – HOMO BLACK



Dam C-D Alley 0721



Full Sister LAR BRM Alley 121L



Maternal Sister BOHR 3352L



LAR BRM COOL KID 1M
POLLED | BLACK
 CA-BPG1457705 | LAR 1M | 1/1/2024

BW	Adj WW	Adj YW	CE	BW	WW	YW	MK	MCE	MWW
91	753	1339	10.5	2	90.8	141.5	17.3	7.2	62.7

SIRE NGDB STRUCTURE 34D
BLACK GOLD COLISEUM 140H
 RF CERTAINLY FLIRTIN 532C

DAM LRX UNCLE JEFFREY 56A
WFL BLACK NELLE 824F
 WFL MS BLACK NELLE 446B

CONSIGNED BY LA Ranch & Bar M Simmentals

We really like this bull a lot. He just has so much good about him. Long spined, soft made, big hipped, and great haired. He travels very well, stands on a good foot and is very correct in his lines. His dam has been a very consistent producer. 1M had a full brother in the sale last year that was a real nice bull as well. Have a peak at his EPDs as well!

HOMO POLLED - HOMO BLACK



Sire Black Gold Coliseum 140H



Dam WFL Black Nellie 824F



Full Brother LAR 21L



CONSIGED BY
LA Ranch

Large framed bull here that comes from one of our top cow families. Large framed bull that was one of the heavy weights in the fall and will produce calves with some added growth. Awesome haired bull with lots of extension through that front third in a well balanced package.

HOMO POLLED
HETERO BLACK



Dam



LAR COLISEUM 2M
POLLED | BLACK
CA-BPG1457706 | LAR 2M | 1/1/2024

BW	Adj WW	Adj YW	CE	BW	WW	YW	MK	MCE	MWW
99	783	1306	8.8	5	97.4	142.5	22.4	5.9	71.1

SIRE NGDB STRUCTURE 34D
BLACK GOLD COLISEUM 140H
RF CERTAINLY FLIRTIN 532C

DAM LRX BROCKER 43D
LAR STARLIGHT 46H
MITCHELLS BLACK HOTTY 63D



LAR DEW NORTH 30M
POLLED | BLACK
CA-BPG1465422 | LAR 30M | 24/1/2024

BW	Adj WW	Adj YW	CE	BW	WW	YW	MK	MCE	MWW
88	724	1134	9.6	1.5	80.4	119	20	3.9	60.2

SIRE GSC GCCO DEW NORTH 102C
LLW CARD TRUE NORTH G71
COX`S JOYS PRINCESS711E

DAM HFL ENDGAME 911G
HFL GINA 2066K
DOUBLE BAR D GINA 507E



CONSIGED BY
LA Ranch

30M is the only True North son in the offering as he came in dam out of a heifer we purchased from Horner Cattle in Manitoba. 30M has a real nice look to him, well balanced and does a great job of balancing calving ease without giving up too much performance.

HOMO POLLED
HOMO BLACK



Sire



CONSIGED BY
LA Ranch

Here is an ET calf that we purchased as an embryo out of the Wilson Stock Farms Dispersal. This bull is super stout made, huge topped, tons of body, so easy doing and quiet. He followed me around like a bottle calf till he was at least a couple months old.

HOMO POLLED
HETERO BLACK



25 LAR **UNTOUCHABLE** 26M
POLLED | BLACK
 CA-BPTG1483543 | LAR 26M | 26/1/2024

BW	Adj WW	Adj YW	CE	BW	WW	YW	MK	MCE	MWW
81	696	1269	6.6	4	88.3	129.5	21.9	3.5	66.1

SIRE MRL CAPONE 130B
MRL UNTOUCHABLE 89G
 TSN MS EDITION 55W

DAM CSCX BANDWAGON 513A
MUIRHEADS PERFECT 73E
 MUIRHEADS PERFECT 85Y

26 LAR **EMPEROR** 58M
POLLED | RED
 CA-PG1464419 | LAR 58M | 9/2/2024

BW	Adj WW	Adj YW	CE	BW	WW	YW	MK	MCE	MWW
106	672	1114	8.5	4	71.8	102.7	19.1	4.3	55

SIRE MR HOC BROKER
RHF BROKER EMPEROR 710E
 RHF STUBBY SARNIA 302Z

DAM SWAN LAKE BIG RED 85 B
DOUBLE BAR D GINA 640E
 DOUBLE BAR D GINA 18U



CONSIGED BY
LA Ranch

The only emperor calf in the offering but a good one. 58M is a well balanced bull that puts it all together in a red package. His dam is a big powerful cow with a great udder and awesome feet. He have lots of Broker progeny and can't say enough good about them.

HETERO POLLED
DILUTER FREE



Sire



CONSIGED BY
LA Ranch

38M is out of one of my top picks of the cows we got from Double Bar D Farms. He is clean fronted and as hairy as they come. Lots of calving ease on this guy, posting a negative BW number on his EPDs.

HETERO POLLED
HOMO BLACK



Sire

27 LAR **TROUBLE FREE** 38M
POLLED | BLACK
CA-BPG1464338 | LAR 38M | 27/1/2024

BW	Adj WW	Adj YW	CE	BW	WW	YW	MK	MCE	MWW
84	646	1137	13.3	1.6	71.5	105	20.9	4	56.7

SIRE W/C RELENTLESS 32C
W/C RELENTLESS 007G
W/C RJ MISS DERBY GIRL

DAM REMINGTON LOCK N LOAD 54U
W/C MISS 8543 8001F
MISS WERNING KP 8543U

28 LAR **RELENTLESS** 57M
SCURRED | BLACK
CA-BSG1464416 | LAR 57M | 9/2/2024

BW	Adj WW	Adj YW	CE	BW	WW	YW	MK	MCE	MWW
105	709	1288	7.6	3.1	81.6	120.7	21.4	1.9	62.2

SIRE W/C RELENTLESS 32C
W/C RELENTLESS 007G
W/C RJ MISS DERBY GIRL

DAM WS PROCLAMATION E202
DOUBLE BAR D BETTE 411H
DOUBLE BAR D BETTE 477F



CONSIGED BY
LA Ranch

So much extension through that front third, great hair and nice sweeping rib cage. I really wish we would have had more heifers out of this bull then we got as I believe they will be incredible cows.

HETERO POLLED
HOMO BLACK



Dam



CONSIGED BY
LA Ranch

These Relentless sons have so much hair and style. 34M was born a twin but was a good size and definitely grew up well. His dam is a nice made cow that came in the group of cows we purchased from Double Bar D Farms in Saskatchewan.

HETERO POLLED
HOMO BLACK



Dam



LAR RELENTLESS 34M

POLLED | BLACK

CA-BPG1464335 | LAR 34M | 26/1/2024

BW	Adj WW	Adj YW	CE	BW	WW	YW	MK	MCE	MWW
93	753	1201	8.6	3.3	71	103.3	19.4	3	54.9

SIRE W/C RELENTLESS 32C
W/C RELENTLESS 007G
W/C RJ MISS DERBY GIRL

DAM VCL LKC DAGGER 605D
DOUBLE BAR D ICY 511G
MISS M&S BLACK ICE 10N





30

BRM ARNOLD 48M**HORNED | FULLBLOOD**

CA-T1495264 | BRM 48M | 1/2/2024

BW	Adj WW	Adj YW	CE	BW	WW	YW	MK	MCE	MWW
110	745	1262	9.2	4.4	67.3	100	28.4	9.3	62.1

31

BRM ARNOLD 46M**HORNED | FULLBLOOD**

CA-PT1495259 | BRM 46M | 1/2/2024

BW	Adj WW	Adj YW	CE	BW	WW	YW	MK	MCE	MWW
103	734	1244	9.2	2.8	60.2	81.9	28.4	9.6	58.5

SIEGFRIED
SIR ARNOLD 809G
 ABR SHINAGH VIOLET

DAM
 SIBELLE POL DARWIN 21F
BBBG POL CARA 36C
 WOLFES CARA FF36C

CONSIGED BY Bar M Simmentals

Awesome set of ET brothers here. We bought these embryos from Canadian Donors and what an incredible set of bulls we got out of it. There are actually three but unfortunately one of them got injured but all three of them were like peas in a pod and were stand out bulls since the very beginning. All summer we were trying to pick a favourite but were never able to. Whether you like the more traditional colour with the added white or the more solid colour bull you will be happy with either one.

HORNED - DILUTER FREE



Dam BBBG POL Cara 36C



CONSIGED BY
Bar M Simmentals

Really nice dark red bull here backed by an outstanding cow with a beautiful udder that was in the package of cows we got from Double Bar D farms. The Bandit bull that these cows were bred to has left us a really nice set of calves.

SCURRED
DILUTER FREE



LAR BRM THE BANDIT 56M

POLLED | FULLBLOOD

CA-P1489269 | LAR 56M | 9/2/2024

BW	Adj WW	Adj YW	CE	BW	WW	YW	MK	MCE	MWW
102	727	1257	5.8	4.4	75.6	105.5	32	3.3	69.8

SIRE DOUBLE BAR D BANDIT 168A
100X BANDIT 0038H
DOUBLE BAR D SUZE 21E

DAM LFE FS LEWIS 547E
SANDY HILL GENNIE 908G
VIRGINIA BETTINA 446B



BRM BLUEPRINT 39M

HORNED | FULLBLOOD

CA-1483807 | BRM 39M | 27/1/2024

BW	Adj WW	Adj YW	CE	BW	WW	YW	MK	MCE	MWW
98	670	1155	10.4	4.4	77	103.4	36.6	5.4	75.1

SIRE ANCHOR "T" RUSTY 59G
STARWEST POL BLUEPRINT
PHS HOMOZYGOUS XCEPTIONAL

DAM ROD SHAMROCK 10G
SUNNY VALLEY RHEA 29K
SUNNY VALLEY RHEA 24E



CONSIGED BY
Bar M Simmentals

39M is out of a real nice first calf heifer we purchased as a bred heifer out of the Family Matters sale from the great people of Sunny Valley Simmentals. 29K is out of the great Rhea cow family. 39M is a stout, deep bodied, hairy individual.

HORNED
DILUTER FREE



Dam



CONSIGED BY
Bar M Simmentals

23M is mothered by a beautiful fullblood cow with tons of body and a great udder. He is in the top 10% of the breed for calving ease and top 25% for BW so he should calve like a dream. We used his sire on heifers with great success.

HOMO POLLED
DILUTER FREE



BRM FERROUS 23M
POLLED | FULLBLOOD
CA-P1496971 | BRM 23M | 19/1/2024

BW	Adj WW	Adj YW	CE	BW	WW	YW	MK	MCE	MWW
96	629	1146	13.9	3.4	78.7	115.4	36.3	9.9	75.7

SIRE KEET'S DYNAMIC 20D
KEET'S FERROUS 26F
XRC DOMINIQUE 19D

DAM SUNNY VALLEY FREEDOM 22F
BRM ERIKA 108K
WJS ERIKA 748E



LAR BRM BANDIT 27M
POLLED | FULLBLOOD
CA-P1489265 | LAR 27M | 22/1/2024

BW	Adj WW	Adj YW	CE	BW	WW	YW	MK	MCE	MWW
104	608	1086	3.4	6.6	68.2	91	27.2	-1.1	61.3

SIRE DOUBLE BAR D BANDIT 168A
100X BANDIT 0038H
DOUBLE BAR D SUZE 21E

DAM DOUBLE BAR D BATMAN 216E
DOUBLE BAR D RENATA 169H
DOUBLE BAR D RENATA 25F



CONSIGED BY
Bar M Simmentals

Sharp looking cherry red, fullblood bull. 27M came in dam out of one of the many cows we purchased from Double Bar D Farms. Great hair on this bull, he's smooth made and loose hidid.

SCURRED
DILUTER FREE



Dam



LAR **BRAVO** 100M
BLACK ANGUS

2357374 | LAR 100M | 10/1/2024

BW	Adj WW	Adj YW	CE	BW	WW	YW	MK	MCE
82	730	1150	13	-0.3	44	83	22	10

SIRE COLEMAN CHARLO 0256
COLEMAN BRAVO 6313
COLEMAN DONNA 714

DAM BURNETT CHINOOK 5D
CROSBY BLACKCAP 111H
CROSBY BLACKCAP 103B

CONSIGNED BY LA Ranch

100M is exactly what our heifer bull program is all about. His pedigree is stacked with many generations of calving ease on both sides and yet he's still a nice bull that grew very well weaning off with an actual WW on aug 26 of 730 lbs. This bull is top 2% of the breed for BW and top 10% for CE on his EPDs.



Sire Coleman Bravo 6313



Dam Crosby Blackcap 111H



Dam with 100M Crosby Blackcap 111H



CONSIGED BY
LA Ranch

Another nice heifer bull option here. The Table Top calves were very consistently small at birth with tons of vigour. 106M has a real nice look, small headed and smooth shouldered.



LAR TABLE TOP 106M
BLACK ANGUS
2357366 | LAR 106M | 11/2/2024

BW	Adj WW	Adj YW	CE	BW	WW	YW	MK	MCE
74	600	975	10	-0.4	47	81	28	11

SIRE NEILCAIRN FLAT TOP 4252F
GGA TABLE TOP 1J
PREMIER HASSON EMPRESS 910

DAM HR HAHN ADAPTED 61B
CROSBY BLACKCAP 102F
CROSBY BLACKCAP 89C



LAR TABLE TOP 107M
BLACK ANGUS
2357372 | LAR 107M | 14/2/2024

BW	Adj WW	Adj YW	CE	BW	WW	YW	MK	MCE
90	705	1110	5	2	55	100	26	8

SIRE NEILCAIRN FLAT TOP 4252F
GGA TABLE TOP 1J
PREMIER HASSON EMPRESS 910

DAM JL RENOWN 7237
CROSBY BLACKCAP 89H
CROSBY BLACKCAP 101D



CONSIGED BY
LA Ranch

Big square hip on this bull. He's well balanced and is out of a very nice young cow. 107M is long, deep and very smooth made with that beautiful Angus front end on him.



CONSIGED BY
LA Ranch

This bull is out of my favourite Angus cow family. This bulls dam is a maternal sister to our 76D donor cow that we just think the world of. She is massive middled, easy doing and great uddered. 104M is a calving ease deluxe bull that will work great in the heifer pen.



LAR TABLE TOP 104M
BLACK ANGUS
2359518 | LAR 104M | 20/1/2024

BW	Adj WW	Adj YW	CE	BW	WW	YW	MK	MCE
74	660	1070	8	0.5	48	86	23	9

SIRE NEILCAIRN FLAT TOP 4252F
GGA TABLE TOP 1J
PREMIER HASSON EMPRESS 910

DAM JL NATION 8132
LAR ERICA 305K
CROSBY ERICA 71B



LAR BRAVO 105M
BLACK ANGUS
2357371 | LAR 105M | 21/1/2024

BW	Adj WW	Adj YW	CE	BW	WW	YW	MK	MCE
85	700	1050	12	-0.2	43	81	22	10

SIRE COLEMAN CHARLO 0256
COLEMAN BRAVO 6313
COLEMAN DONNA 714

DAM BURNETT CHINOOK 5D
CROSBY BLAKCAP 120G
CROSBY BLACKCAP 103B



CONSIGED BY
LA Ranch

Long spined bull that is wide topped, narrow headed, and smooth shouldered. His dam is sired by Chinook who was a true Calving Ease bull that was extremely consistent. 105M has a little more BW but its cause of his length, he is a heifer safe option.



Dam



CONSIGED BY
LA Ranch

Check out this guy! He's got the look. Sweeping rib cage, bold ribbed, stout made, you can't miss this guy when you walk in the pen. His first calver dam did an exceptional job here. She's nice uddered and solid footed.



LAR BEST ANSWER 102M

BLACK ANGUS

2404008 | LAR 102M | 6/1/2024

BW	Adj WW	Adj YW	CE	BW	WW	YW	MK	MCE
93	740	1125	2	1.5	60	107	32	7.5



LAR AVIATOR 103M

BLACK ANGUS

2357370 | LAR 103M | 17/1/2024

BW	Adj WW	Adj YW	CE	BW	WW	YW	MK	MCE
89	770	1230	2	1.5	53	90	25	11

SIRE S A V FINAL ANSWER 0035
LFE BEST ANSWER 800H
LFE BA CHINOOK 627F

DAM S A V BLOODLINE 9578
ANCHORAGE JANESSA 2022
REMITALL F JANESSA 313E

SIRE KROUPALS B&B IDENTITY
MUSGRAVE AVIATOR
MCATL FOREVER LADY 1429-138

DAM HR HAHN ADAPTED 61B
CROSBY ERICA 108F
CROSBY ERICA 112C



CONSIGED BY
LA Ranch

103M Is out of a huge middled easy doing awesome uddered cow. He's the only calf we have out of Aviator. He is a stout, long spined bull that should add some growth to his calves.



Dam



43


BRM GLAMOUR 111M
 POLLED | FULLBLOOD
 CA-P1489133 | BRM 111M | 9/1/2024

BW	Adj WW	Adj YW	CE	BW	WW	YW	MK	MCE	MWW
90	657	967	7.3	4	70.4	94.2	29	4.1	64.2

SIRE ANTRIM GRIFFON 32G
 NGDB GRIFFON 81J
 NGDB DAKOTA 624D

DAM STARWEST POL EAGLE EYE
 BAR M GLAMOUR 102H
 STARWEST GLAMOUR

CONSIGNED BY Bar M Simmentals

We don't sell many fullblood females but wanted to offer one in this sale so here she is. She's sired by Griffen who is been a staple in our fullblood program. Its hard to find a Homo Polled fullblood that is still so stout and deep bodied. The calves from Griffen continue to impress us. His first set of daughters calved this winter and they look awesome. 111M is out of a beautiful young cow that came in dam out of a heifer we purchased from Star West Farms. She is a super nice heifer, she is long spined has a nice frame size, she's soft made and is very well balanced.

HETERO POLLED - DILUTER FREE



Sire NGDB Griffon 81J



Brother to Dam BRM 50L



LAR DIVINE 300M
POLLED | RED

CA-PG1466910 | LAR 300M | 1/1/2024

BW	Adj WW	Adj YW	CE	BW	WW	YW	MK	MCE	MWW
74	679	994	13.6	1.4	86.6	119.3	23.1	4.8	66.4

SIRE MAR MAC UTAH WHISKY 52E
WLB TOP TIER 456G
 WLB 47Y FAE 343E

DAM RF CALIBER 014G
RF/STR DIVINE 248K
 RF RED DIVINE 9104G

CONSIGNED BY LA Ranch

I am always so happy when a purchased heifer has a heifer calf so that you have a replacement... and here I am selling this one. Being red definitely made that decision easier as we mostly focus on black cattle. I also didn't agree to selling this heifer till her dam had another heifer calf on the ground this year. 48K came from Rancier Farms and we couldn't be happier with how she turned out. 300M is a huge middled, wide topped stout made heifer. Pretty hard to poke a hole in this female. She's dark red and even has those big ears that we all love.

HOMO POLLED



Sire WLB Top Tier 456G



Dam RF/STR Divine 248K



Dam Udder



45
Roots

LAR **HOTTY** 413M

POLLED | BLACK

UNR1483538 | LAR 413M | 21/1/2024

BW	Adj WW	Adj YW	CE	BW	WW	YW	MK	MCE	MWW
88	662	955	10.1	3.8	101.1	149.3	30.6	6.3	81.2

46
Roots

LAR **HOTTY** 422M

POLLED | BLACK

CA-BPTG1483533 | LAR 422M | 27/1/2024

BW	Adj WW	Adj YW	CE	BW	WW	YW	MK	MCE	MWW
97	651	961	10.3	2.9	99.8	141.7	30.6	6.6	80.5

SIRE R PLUS YUMA 9087G
RF NO LIMITS 1112J
RUST MISS 6217D

DAM LAZYCREEK HOT SHOT 56A
MITCHELLS BLACK HOTTY 63D
MITCHELLS BLK DOWNEY 78A

CONSIGED BY LA Ranch

I don't even know where to start on this flush. These heifers and the one bull we got where all just real good calves. We sold one full sister last fall at FNL where she was very well receive and was an absolute power house of a heifer. 413M would be a little bit more moderate then some of her sisters but may be the best one of the whole flush. I was dead set against selling this female as I had high hopes for her replacing her dam in the donor pen and that's why she isn't registered yet as I didn't send hair away when we did the rest of the sale cattle but somehow she found her way into the sale and she should be registered by sale day. She's soft made, stout, beautiful fronted, awesome haired, has a perfect blaze and not much extra white. 422M is another awesome heifer out of this flush that is very nice made and hard to fault. Awesome EPDs on these heifers as well.

413M HOMO POLLED - COLOUR TEST PENDING
422M HOMO POLLED - HETERO BLACK



Full Sister LAR Miss
406M



Dam Mitchells Black
Hotty 63D



Maternal Sister



Maternal Sister



CONSIGED BY
LA Ranch

The first daughter out of our Above and Beyond donor cow that we are so high on. She is a fancy one that could easily wear a halter. She is so extended and up headed, has great hair and a perfect blaze. We have a whole bunch of 0325 ET calves on the ground this year and they look awesome. She is a beautiful cow that has an exceptional udder.

HOMO POLLED
HOMO BLACK



Dam



LAR ABOVE AND BEYOND 431M
POLLED | BLACK
CA-BPG1464427 | LAR 431M | 10/2/2024

BW	Adj WW	Adj YW	CE	BW	WW	YW	MK	MCE	MWW
95	707	904	7.5	4.2	91.7	138.3	21.4	3.6	67.3

SIRE R PLUS YUMA 9087G
RF NO LIMITS 1112J
RUST MISS 6217D

DAM TL LEDGER
C-D ABOVE & BEYOND 0325
SVF ABOVE & BEYOND T87



BRM NICKI 88M
POLLED | BLACK

CA-BPG1496974 | BRM 88M | 5/2/2024

BW	Adj WW	Adj YW	CE	BW	WW	YW	MK	MCE	MWW
98			5.9	4.3	90	128.7	21.6	2.9	66.6

SIRE R PLUS YUMA 9087G
RF NO LIMITS 1112J
RUST MISS 6217D

DAM SUN RISE ECLIPSE 14E
ME 'N MY NICKI 19C
BLACKSAND NICKI 38B



CONSIGED BY
LA Ranch

Another well made No Limits heifer. The No Limits offspring are just so consistently good. His first set of daughters are milking now and they look awesome. 88M is a more moderate heifer that is deep sided and stout made. Her dam is a good footed nice uddered cow that has put 2 bulls through this sale.

HOMO POLLED
HETERO BLACK



Sire



LAR **LINDY** 409M

POLLED | BLACK

CA-BPG1463858 | LAR 409M | 16/1/2024

BW	Adj WW	Adj YW	CE	BW	WW	YW	MK	MCE	MWW
79	660	953	10.9	1.1	94.4	141.8	25.5	5.9	72.7

SIRE R PLUS YUMA 9087G
RF NO LIMITS 1112J
 RUST MISS 6217D

DAM SPRINGCREEK LINER 56U
WLB 56U LIL 474H
 WLB 47Y FAE 410D

CONSIGNED BY LA Ranch

I really like this heifer a lot. Her dam has been an incredible producer. Her first calf was the \$28,000 Vanderhoof bull that now calls Sunny Valley Simmental's home then on her second try she had a full brother to this heifer that sold for \$13,500 in last years sale to Poole Farms and then she cranked out this rippin good heifer calf that shouldn't be leaving the farm. We will continue flushing this awesome cow as she is a real corner stone female. 409M is an impressive heifer. She's long as a fright train and still has lots of depth of body right from her chest through her flank and has a great set of EPDs.

HOMO POLLED - HETERO BLACK



Dam WLB 56U Lil 474H



Maternal Brother LAR 5K



50


LAR MANDY 404M

POLLED | BLACK

CA-BPG1463669 | LAR 404M | 7/1/2024

BW	Adj WW	Adj YW	CE	BW	WW	YW	MK	MCE	MWW
92	605	909	12.7	0	83.9	121.6	20.6	4.9	62.6

SIRE LCDR IMPACT I34F
RFS HEAVY HITTER H45
 BCLR MISS BALDY E704

DAM R PLUS VENOM 4006B
MISS R PLUS 8151F
 MISS R PLUS 1051Y

CONSIGNED BY LA Ranch

I've said this a few times throughout this book but the R Plus females we have are just damn good cows. They are good footed cows with great udders and 8151F is no exception. She is an absolute tank of a cow that you can't miss. 404M is following closely in her donor dams footsteps. Massive ribbed, has that nice sweep to her rib cage, she's the kind that's gonna raise herd bulls. Heavy Hitter is making waves in the industry and we are very happy with what he has done here so far.

HOMO POLLED - HETERO BLACK



Dam Miss R Plus 8151F



Sire RFS Heavy Hitter H45



LAR REWARD 419M

POLLED | BLACK

CA-BPTG1483529 | LAR 419M | 24/1/2024

BW	Adj WW	Adj YW	CE	BW	WW	YW	MK	MCE	MWW
97	599	970	6.5	5.1	89.7	141.3	19.9	3.3	64.8

SIRE HARVIE JDF WALLBANGER111X LFE MCDAVID 413C
 SVS CAPTAIN MORGAN 11Z LFE BS MISS REWARD 617D
 SUNNYVALLEY BLK JENNA 88U LFE BS MISS REWARD 618A

CONSIGNED BY LA Ranch

Another heifer out of one of our donor cows. This mating really clicked. We had three flush mates that were stand out bulls last year. A flush mate sister that had her first calf this year that looks incredible, and another flush sister in the replacement pen that's almost as good as this one. 419M is super soft made, real stout and hairy just so much capacity in this female and still very feminine. When she walked into the picture pen I thought of something Marlin LaBlanc said "why sell a female that could lay down and raise you a herd bull" so I was really not happy with myself for putting her in the sale as she is everything we want in a female, she's the huge middled easy doing, herd bull raising kind that we want to have 200 of but anyway I guess I'm not as smart as Marlin so here she is. Take advantage of this one.

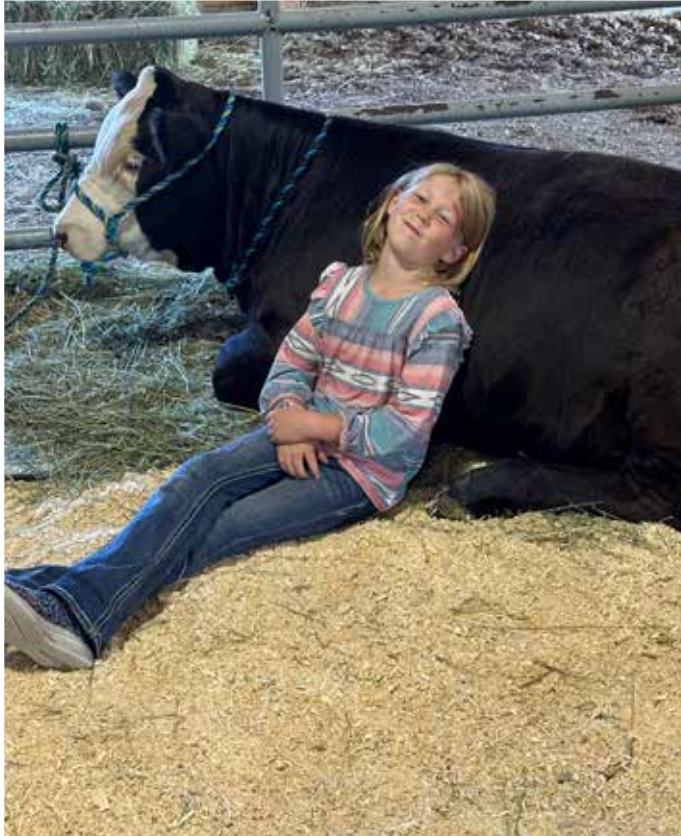
HOMO POLLED - HETERO BLACK



Dam LFE BS Miss Reward 617D



Udder on Full Sib LAR 117L



NOTES



RETURN UNDELIVERABLE MAIL TO

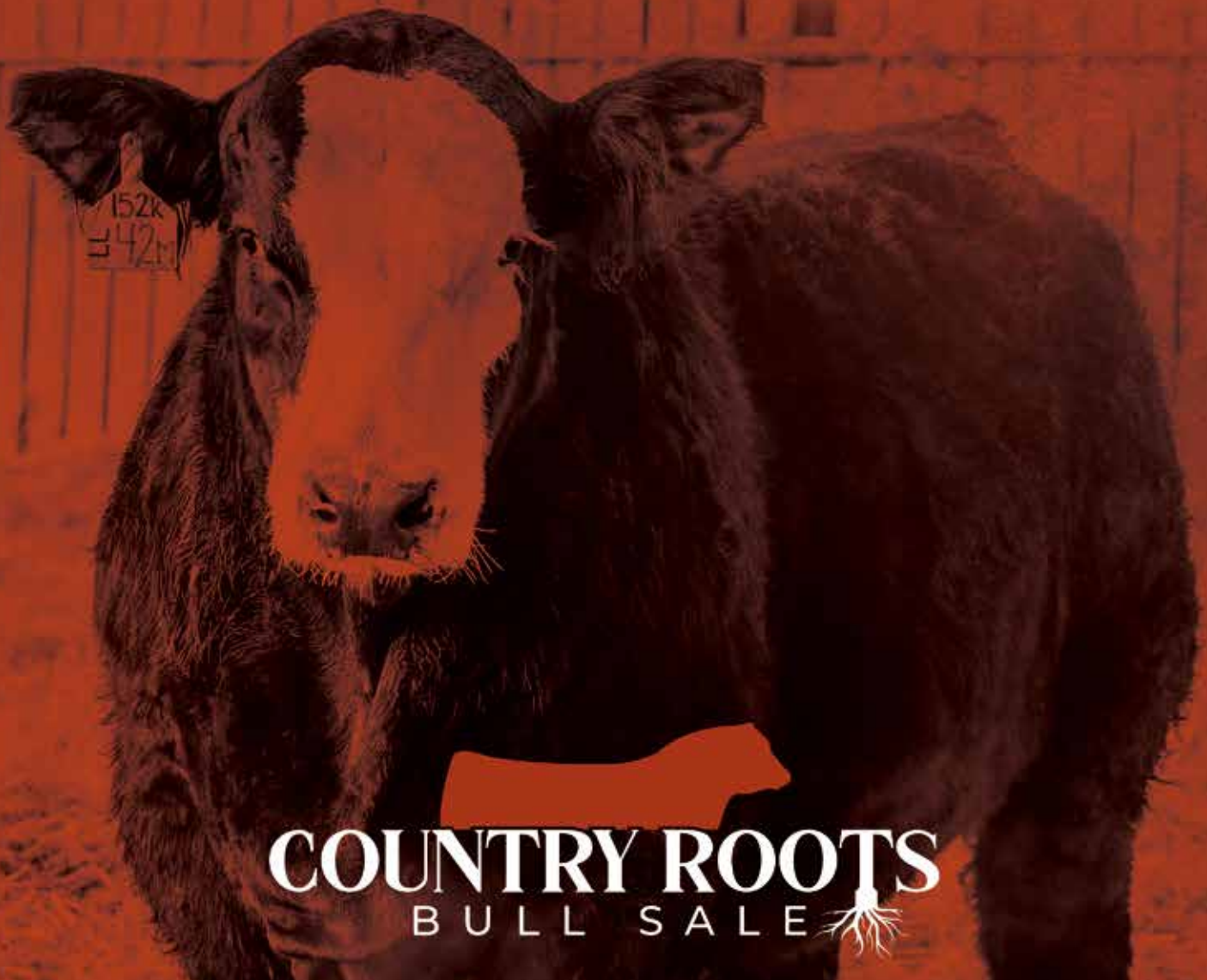


28336 TWP RD 320 :: MOUNTAIN VIEW COUNTY, AB :: T4H 4M7

If you wish to stop receiving catalogues from BMS, please email jodi@bohrson.com or call/text 403-519-3515 to be removed from the mailing list



RETURN POSTAGE GUARANTEED
PORT DE RETOUR GARANTI



COUNTRY ROOTS
BULL SALE