



# NORTHWAY

cattle co.

## POWERADE

LONG YEARLING BULL & FEMALE SALE



*May* **2<sup>ND</sup>** *2025*  
7 PM CLOSEOUT



Timed Auctions Made Easy



*A Note About Our Customer Calf  
Buy Back Program*

If you're using our bulls, we guarantee No OTHER Cattle BUYER knows the true values of your calves like we do.

Breed your Cows with Our Bulls and We will guarantee to get you the best price for your calves.

Join the growing number of satisfied customers that are selling us their calves hassle free, free trucking and priced picked up on your farm.

We can help you price protect current prices and deliver at later date.

Our breeding decisions are based on producing bulls that sire calves that we would prefer to feed or breed as replacements.

We focus on producing Angus Cattle that thrive in harsh environments.

At Northway Cattle the focus is to breed Angus Cattle with added length, frame, thickness, depth of rib and the ability to convert feed more efficiently.

# POWERADE

## LONG YEARLING BULL & FEMALE SALE

CLOSEOUT - FRIDAY

May **2<sup>ND</sup>** 2025

6 PM THURSDAY, MAY 1 - BIDDING OPENS

6 PM FRIDAY, MAY 2- BIDDING CLOSSES

BULL VIEWING ANYTIME

*At the Ranch | Cleardale, Alberta*

OPEN HOUSE - FRIDAY, MAY 2

12 NOON - REFRESHMENTS & BBQ

Refreshments and snacks available all day



See inside back cover for  
Farm Gate Timed Auction guidelines.

*Northway Cattle Co.*  
Albert Stahl - 780-834-7055

*Bohrson Marketing Services*  
Scott Bohrson - 403-370-3010  
Riley Bohrson - 639-213-7777  
Jaxon Payne - 306-830-0456



BOHRSON  
MARKETING SERVICES

*Insurance*  
Will be available sale day

*Directions to*  
Northway Cattle Co.  
Approx ¾ Hour from Fairview, Alberta  
Follow HWY 64 West to Rge 94.5 turn  
South for 3 Miles First Yard on the Right

### DELIVERY

WE OFFER FREE DELIVERY IN AB, BC, SK, All other points will be cost shared.

### INSURANCE:

Although every precaution will be taken to responsibly look after your bull till its delivered. After the bull is sold Northway Cattle Co. will not take on any Liability, Legal or otherwise in the event of accident or loss. We highly recommend you insure your bull purchase.

### PAYMENT:

Within 30 Days for Absentee buyers to receive the Discounts. Bulls have to be paid for in full on sale day to receive Discounts. Discounts will not Apply to Partnership Bulls.

### MILK SCORE:

Our evaluation of the milking ability of the sire's dam and expected milking ability of the sire's daughters.

- ★ Lower weaning weights from insufficient milking ability of the sire's daughters.
- ★ Sire would be breed average for his daughter's milking ability.
- ★ Growth traits can be maximized from the milking ability of a sire's daughters.

*Northway Cattle Co will retain an in herd use interest in every bull selling in the sale.*

### BREEDER GUARANTEE:

Northway Cattle Co guarantees our bulls to be structurally sound & fertile in accordance with the rules & relations of the Canadian Angus Association.

All Bulls have been vet inspected and semen tested by a Licensed Veterinarian. We stand behind the bulls we sell, if a bull fails to be a satisfactory breeder or unable to physically service cows or heifers we require him returned to us, we will replace him with one of equal value or with a full credit minus salvage value in next year's sale.





**LOT 1 NORTHWAY LOADED 413L**  
**MALE NOVEMBER 14 2023 2356203 NWC 413L**

BIRTH WT.	205 WT.	365 WT.	ADG	MILK
77	802	1325	3.42	★

*Sire* HALL BIG TOP 840  
**NORTHWAY LOADED 683J**  
 PEAK DOT LADY 2005E

*Dam* ELLINGSON ROUGH TERRAIN 9136  
**NORTHWAY ANNIE K 212J**  
 PEAK DOT ANNIE K 445E

PVF INSIGHT 0129  
 ZH DADDY'S GIRL 149  
 4M ELEMENT 405  
 PEAK DOT LADY 545C  
 ELLINGSON ROUGHRIDER 4202  
 EA BLACKBIRD 3092  
 PEAK DOT FOOTHILLS 1012B  
 ANNIE K OF PEAK DOT 934W



**LOT 2 NORTHWAY LOADED 420L**  
**MALE NOVEMBER 14 2023 2356404 NWC 420L**

BIRTH WT.	205 WT.	365 WT.	ADG	MILK
76	746	1306	3.37	★

*Sire* HALL BIG TOP 840  
**NORTHWAY LOADED 683J**  
 PEAK DOT LADY 2005E

*Dam* MARDA BLACKSMITH 683  
**NORTHWAY LADY 367J**  
 PEAK DOT LADY 184E

PVF INSIGHT 0129  
 ZH DADDY'S GIRL 149  
 4M ELEMENT 405  
 PEAK DOT LADY 545C  
 CONNEALY BLACK GRANITE  
 S A V BLACKCAP MAY 3092  
 JANSSEN EARNHARDT 5003  
 LADY OF PEAK DOT 206Y





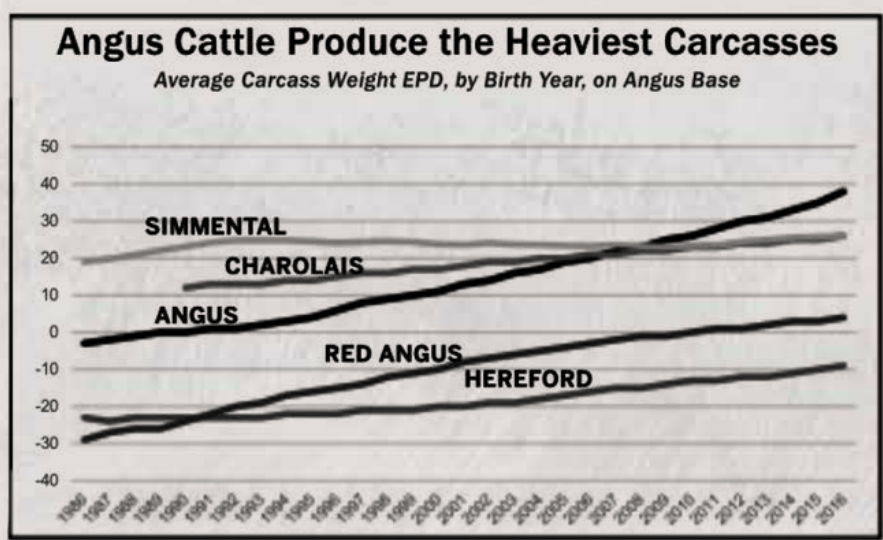
**LOT 3 NORTHWAY LOADED 424L**

**MALE NOVEMBER 15 2023 2356407 NWC 424L**

BIRTH WT.	205 WT.	365 WT.	ADG	MILK
70	786	1338	3.47	★

*Sire* HALL BIG TOP 840  
**NORTHWAY LOADED 683J**  
 PEAK DOT LADY 2005E  
 HF MIDNIGHT HEIST 21F  
*Dam* **NORTHWAY LADY 239J**  
 PEAK DOT LADY 174F

PVF INSIGHT 0129  
 ZH DADDY'S GIRL 149  
 4M ELEMENT 405  
 PEAK DOT LADY 545C  
 MAY-WAY BREAKOUT 1310  
 HF ECHO 279X  
 JANSSEN EARNHARDT 5003  
 LADY OF PEAK DOT 691Y







**LOT 4 NORTHWAY LOADED 426L**  
**MALE NOVEMBER 16 2023 2356409 NWC 426L**

BIRTH WT.	205 WT.	365 WT.	ADG	MILK
87	805	1386	3.56	

*Sire* HALL BIG TOP 840  
**NORTHWAY LOADED 683J**  
 PEAK DOT LADY 2005E

*Dam* MUSGRAVE SKY HIGH 1535  
**NORTHWAY BARDOLIA 435J**  
 PEAK DOT BARDOLIA 323E

PVF INSIGHT 0129  
 ZH DADDY'S GIRL 149  
 4M ELEMENT 405  
 PEAK DOT LADY 545C  
 MUSGRAVE BIG SKY  
 FLAG QUEEN W 00649  
 VISION UNANIMOUS 1418  
 BARDOLIA OF PEAK DOT 654Y



**LOT 5 NORTHWAY SKY HIGH 432L**  
**MALE NOVEMBER 18 2023 2390059 NWC 432L**

BIRTH WT.	205 WT.	365 WT.	ADG	MILK
71	748	1275	3.3	

*Sire* MUSGRAVE SKY HIGH 1535  
**NORTHWAY SKY HIGH 465J**  
 PEAK DOT LADY 2022E

*Dam* MUSGRAVE SKY HIGH 1535  
**NORTHWAY ERICA 356J**  
 PEAK DOT ERICA 342E

MUSGRAVE BIG SKY  
 FLAG QUEEN W 00649  
 HOOVER NO DOUBT  
 PEAK DOT LADY 487A  
 MUSGRAVE BIG SKY  
 FLAG QUEEN W 00649  
 S A V HONOR 4842  
 PEAK DOT ERICA 258C





**LOT 6 NORTHWAY LOADED 439L**

**MALE NOVEMBER 19 2023 2356415 NWC 439L**

BIRTH WT.	205 WT.	365 WT.	ADG	MILK
66	817	1332	3.47	★

*Sire* HALL BIG TOP 840  
**NORTHWAY LOADED 683J**  
 PEAK DOT LADY 2005E

*Dam* PINE COULEE CITADEL F319  
**NORTHWAY PRINCESS 493J**  
 PEAK DOT PRINCESS 345F

PVF INSIGHT 0129  
 ZH DADDY'S GIRL 149  
 4M ELEMENT 405  
 PEAK DOT LADY 545C  
 PF BROADVIEW 5009  
 PINE COULEE EVER ENTENSE A40  
 PEAK DOT UNANIMOUS 1019B  
 PRINCESS OF PEAK DOT 847T



**LOT 7 NORTHWAY SKY HIGH 441L**

**MALE NOVEMBER 19 2023 2362025 NWC 441L**

BIRTH WT.	205 WT.	365 WT.	ADG	MILK
71	702	1268	3.28	★

*Sire* MUSGRAVE SKY HIGH 1535  
**NORTHWAY SKY HIGH 465J**  
 PEAK DOT LADY 2022E

*Dam* ELLINGSON ROUGH TERRAIN 9136  
**NORTHWAY JUNE 271J**  
 PEAK DOT JUNE 209E

MUSGRAVE BIG SKY  
 FLAG QUEEN W 00649  
 HOOVER NO DOUBT  
 PEAK DOT LADY 487A  
 ELLINGSON ROUGHRIDER 4202  
 EA BLACKBIRD 3092  
 PEAK DOT PRIME 733B  
 JUNE OF PEAK DOT 357X





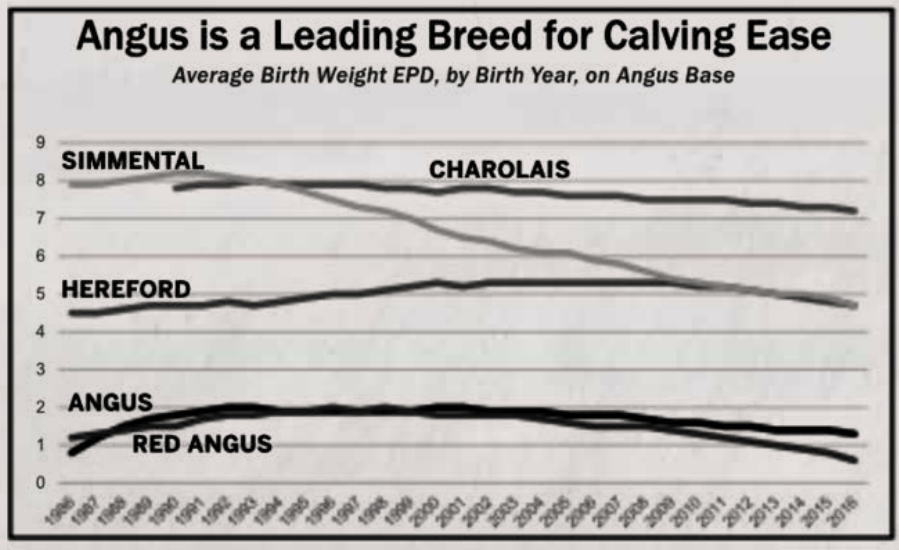
**LOT 8 NORTHWAY SKY HIGH 443L**  
**MALE NOVEMBER 21 2023 2368141 NWC 443L**

BIRTH WT.	205 WT.	365 WT.	ADG	MILK
83	740	1291	3.31	★

*Sire* MUSGRAVE SKY HIGH 1535  
**NORTHWAY SKY HIGH 465J**  
 PEAK DOT LADY 2022E

*Dam* ELLINGSON ROUGH TERRAIN 9136  
**NORTHWAY LADY 204J**  
 NORTHWAY LADY 151G

MUSGRAVE BIG SKY  
 FLAG QUEEN W 00649  
 HOOVER NO DOUBT  
 PEAK DOT LADY 487A  
 ELLINGSON ROUGHRIDER 4202  
 EA BLACKBIRD 3092  
 PEAK DOT PERFECTION 102D  
 PEAK DOT LADY 435D







**LOT 9**

**NORTHWAY 445L**

**MALE NOVEMBER 22 2023 2356620 NWC 445L**

BIRTH WT.	205 WT.	365 WT.	ADG	MILK
83	828	1335	3.43	★

*Sire* HALL BIG TOP 840  
**NORTHWAY LOADED 683J**  
 PEAK DOT LADY 2005E

*Dam* MUSGRAVE SKY HIGH 1535  
**NORTHWAY MAYFLOWER 442J**  
 PEAK DOT MAYFLOWER 412E

PVF INSIGHT 0129  
 ZH DADDY'S GIRL 149  
 4M ELEMENT 405  
 PEAK DOT LADY 545C  
 MUSGRAVE BIG SKY  
 FLAG QUEEN W 00649  
 PEAK DOT PRIME 733B  
 PEAK DOT MAYFLOWER 1129Z



**LOT 10**

**NORTHWAY WIDE LOAD 453L**

**MALE NOVEMBER 22 2023 2366161 NWC 453L**

BIRTH WT.	205 WT.	365 WT.	ADG	MILK
70	798	1356	3.52	★

*Sire* HALL BIG TOP 840  
**NORTHWAY WIDE LOAD 693J**  
 PEAK DOT LADY 2005E

*Dam* NORTHWAY SCALE BREAKER 70F  
**NORTHWAY MAYFLOWER 414H**  
 PEAK DOT MAYFLOWER 412E


PVF INSIGHT 0129  
 ZH DADDY'S GIRL 149  
 4M ELEMENT 405  
 PEAK DOT LADY 545C  
 HF CROSSFIRE 63D  
 PEAK DOT HYALITE 1112D  
 PEAK DOT PRIME 733B  
 PEAK DOT MAYFLOWER 1129Z





**LOT 11 NORTHWAY PROGRESSION 454L**

MALE NOVEMBER 22 2023 2368317 NWC 454L

BIRTH WT.	205 WT.	365 WT.	ADG	MILK
77	716	1278	3.29	

*Sire* NORTHWAY SCALE BREAKER 70F  
**NORTHWAY PROGRESSION 496H**  
 PEAK DOT HEROINE 173E  
  
*Dam* PINE COULEE BOCEPHUS 101  
**NORTHWAY ROSE 258H**  
 NORTHWAY ROSE 69F

HF CROSSFIRE 63D  
 PEAK DOT HYALITE 1112D  
 SCHIEFELBEIN ATTRACTIVE 4565  
 HEROINE OF PEAK DOT 471S  
 HA COWBOY UP 5405C  
 MW BLACK NELLIE RITA 032  
 GTA BLACK HOOVER 730B  
 PEAK DOT ROSE 2242D



**LOT 12 NORTHWAY WIDE LOAD 455L**

MALE NOVEMBER 22 2023 2366110 NWC 455L

BIRTH WT.	205 WT.	365 WT.	ADG	MILK
76	781	1302	3.36	

*Sire* HALL BIG TOP 840  
**NORTHWAY WIDE LOAD 693J**  
 PEAK DOT LADY 2005E  
  
*Dam* NORTHWAY SCALE BREAKER 70F  
**NORTHWAY MAYFLOWER 414H**  
 PEAK DOT MAYFLOWER 412E

PVF INSIGHT 0129  
 ZH DADDY'S GIRL 149  
 4M ELEMENT 405  
 PEAK DOT LADY 545C  
 HF CROSSFIRE 63D  
 PEAK DOT HYALITE 1112D  
 PEAK DOT PRIME 733B  
 PEAK DOT MAYFLOWER 1129Z





**LOT 13 NORTHWAY WIDE LOAD 456L**  
**MALE NOVEMBER 22 2023 2369155 NWC 456L**

BIRTH WT.	205 WT.	365 WT.	ADG	MILK
70	790	1336	3.66	★

*Sire* HALL BIG TOP 840  
**NORTHWAY WIDE LOAD 693J**  
 PEAK DOT LADY 2005E

*Dam* NORTHWAY SCALE BREAKER 70F  
**NORTHWAY MAYFLOWER 414H**  
 PEAK DOT MAYFLOWER 412E

PVF INSIGHT 0129  
 ZH DADDY'S GIRL 149  
 4M ELEMENT 405  
 PEAK DOT LADY 545C  
 HF CROSSFIRE 63D  
 PEAK DOT HYALITE 1112D  
 PEAK DOT PRIME 733B  
 PEAK DOT MAYFLOWER 1129Z



**LOT 14 NORTHWAY DEPENDABULL 458L**  
**MALE NOVEMBER 23 2023 2368230 NWC 458L**

BIRTH WT.	205 WT.	365 WT.	ADG	MILK
60	712	1261	3.29	★

*Sire* ELLINGSON ROUGH TERRAIN 9136  
**NORTHWAY DEPENDABULL 274J**  
 NORTHWAY BARDOLIA 89G

*Dam* NORTHWAY SCALE BREAKER 70F  
**NORTHWAY LADY 359H**  
 PEAK DOT LADY 2022E

ELLINGSON ROUGHRIDER 4202  
 EA BLACKBIRD 3092  
 PEAK DOT ELIMINATOR 619D  
 PEAK DOT BARDOLIA 2151E  
 HF CROSSFIRE 63D  
 PEAK DOT HYALITE 1112D  
 HOOVER NO DOUBT  
 PEAK DOT LADY 487A





**LOT 15 NORTHWAY PERFECTION 496L**

**MALE DECEMBER 18 2023 2369137 NWC 496L**

BIRTH WT.	205 WT.	365 WT.	ADG	MILK
66	756	1289	3.35	★

*Sire* PEAK DOT PERFECTION 102D  
**NORTHWAY PERFECTION 401H**  
 PEAK DOT ANN 472F  
 H A F LEGENDARY 1935  
*Dam* **NORTHWAY LADY 534J**  
 NORTHWAY LADY 404G

4M ELEMENT 405  
 PEAK DOT ANNIE K 1066A  
 PEAK DOT UNANIMOUS 1113B  
 PEAK DOT ANN 183C  
 CONNEALY LEGENDARY 644L  
 H A F ERENETTA 1620  
 MUSGRAVE 316 COLOSSAL 137  
 PEAK DOT LADY 370D



**LOT 16 NORTHWAY PROGRESSION 512L**

**MALE NOVEMBER 28 2023 2366097 NWC 512L**

BIRTH WT.	205 WT.	365 WT.	ADG	MILK
75	744	1297	3.35	★

*Sire* NORTHWAY SCALE BREAKER 70F  
**NORTHWAY PROGRESSION 496H**  
 PEAK DOT HEROINE 173E  
 PEAK DOT PERFECTION 102D  
*Dam* **NORTHWAY LADY 156G**  
 LADY OF PEAK DOT 287Y

HF CROSSFIRE 63D  
 PEAK DOT HYALITE 1112D  
 SCHIEFELBEIN ATTRACTIVE 4565  
 HEROINE OF PEAK DOT 471S  
 4M ELEMENT 405  
 PEAK DOT ANNIE K 1066A  
 PEAK DOT BOLD 204U  
 LADY OF PEAK DOT 589T





**LOT 17 NORTHWAY PROGRESSION 514L**

**MALE NOVEMBER 29 2023 2366109 NWC 514L**

BIRTH WT.	205 WT.	365 WT.	ADG	MILK
91	856	1386	3.55	★

*Sire* NORTHWAY SCALE BREAKER 70F  
**NORTHWAY PROGRESSION 496H**  
 PEAK DOT HEROINE 173E  
*Dam* PINE COULEE BOCEPHUS 101  
**NORTHWAY ROSE 258H**  
 NORTHWAY ROSE 69F

HF CROSSFIRE 63D  
 PEAK DOT HYALITE 1112D  
 SCHIEFFELBEIN ATTRACTIVE 4565  
 HEROINE OF PEAK DOT 471S  
 HA COWBOY UP 5405C  
 MW BLACK NELLIE RITA 032  
 GTA BLACK HOOVER 730B  
 PEAK DOT ROSE 2242D



**LOT 18 NORTHWAY DEPENDABULL 518L**

**MALE NOVEMBER 30 2023 2366123 NWC 518L**

BIRTH WT.	205 WT.	365 WT.	ADG	MILK
76	740	1284	3.31	★

ELLINGSON ROUGH TERRAIN 9136  
*Sire* **NORTHWAY DEPENDABULL 274J**  
 NORTHWAY BARDOLIA 89G  
 PEAK DOT PERFECTION 102D  
*Dam* **NORTHWAY LADY 156G**  
 LADY OF PEAK DOT 287Y

ELLINGSON ROUGHRIDER 4202  
 EA BLACKBIRD 3092  
 PEAK DOT ELIMINATOR 619D  
 PEAK DOT BARDOLIA 2151E  
 4M ELEMENT 405  
 PEAK DOT ANNIE K 1066A  
 PEAK DOT BOLD 204U  
 LADY OF PEAK DOT 589T





**LOT 19 NORTHWAY DEPENDABULL 524L**

**MALE DECEMBER 01 2023 2368264 NWC 524L**

BIRTH WT.	205 WT.	365 WT.	ADG	MILK
100	880	1370	3.49	★

*Sire* ELLINGSON ROUGH TERRAIN 9136  
**NORTHWAY DEPENDABULL 274J**  
 NORTHWAY BARDOLIA 89G  
 NORTHWAY SCALE BREAKER 70F  
*Dam* **NORTHWAY HEROINE 406H**  
 PEAK DOT HEROINE 173E

ELLINGSON ROUGHRIDER 4202  
 EA BLACKBIRD 3092  
 PEAK DOT ELIMINATOR 619D  
 PEAK DOT BARDOLIA 2151E  
 HF CROSSFIRE 63D  
 PEAK DOT HYALITE 1112D  
 SCHIEFELBEIN ATTRACTIVE 4565  
 HEROINE OF PEAK DOT 471S



**LOT 20 NORTHWAY PROGRESSION 527L**

**MALE DECEMBER 01 2023 2368225 NWC 527L**

BIRTH WT.	205 WT.	365 WT.	ADG	MILK
65	714	1301	3.39	★

NORTHWAY SCALE BREAKER 70F  
*Sire* **NORTHWAY PROGRESSION 496H**  
 PEAK DOT HEROINE 173E  
 HOOVER NO DOUBT  
*Dam* **PEAK DOT DUCHESS 903E**  
 PEAK DOT DUCHESS 17B

HF CROSSFIRE 63D  
 PEAK DOT HYALITE 1112D  
 SCHIEFELBEIN ATTRACTIVE 4565  
 HEROINE OF PEAK DOT 471S  
 MOGCK BULLSEYE  
 MISS BLACKCAP ELLSTON J2  
 PEAK DOT ELIMINATOR 100Z  
 DUCHESS OF PEAK DOT 610T





**LOT 21 NORTHWAY PROGRESSION 528L**

**MALE DECEMBER 01 2023 2368227 NWC 528L**

BIRTH WT.	205 WT.	365 WT.	ADG	MILK
95	854	1401	3.58	★

*Sire* NORTHWAY SCALE BREAKER 70F  
**NORTHWAY PROGRESSION 496H**  
 PEAK DOT HEROINE 173E  
 PEAK DOT PRIME 733B  
*Dam* **PEAK DOT MAYFLOWER 412E**  
 PEAK DOT MAYFLOWER 1129Z

HF CROSSFIRE 63D  
 PEAK DOT HYALITE 1112D  
 SCHIEFELBEIN ATTRACTIVE 4565  
 HEROINE OF PEAK DOT 471S  
 VISION UNANIMOUS 1418  
 ERICA OF PEAK DOT 478U  
 PEAK DOT PIONEER 9X  
 MAYFLOWER OF PEAK DOT 356W



**LOT 22 NORTHWAY DEPENDABULL 530L**

**MALE DECEMBER 03 2023 2368218 NWC 530L**

BIRTH WT.	205 WT.	365 WT.	ADG	MILK
99	810	1340	3.40	★

ELLINGSON ROUGH TERRAIN 9136  
*Sire* **NORTHWAY DEPENDABULL 274J**  
 NORTHWAY BARDOLIA 89G  
 HOOVER NO DOUBT  
*Dam* **PEAK DOT DUCHESS 903E**  
 PEAK DOT DUCHESS 17B

ELLINGSON ROUGHRIDER 4202  
 EA BLACKBIRD 3092  
 PEAK DOT ELIMINATOR 619D  
 PEAK DOT BARDOLIA 2151E  
 MOGCK BULLSEYE  
 MISS BLACKCAP ELLSTON J2  
 PEAK DOT ELIMINATOR 100Z  
 DUCHESS OF PEAK DOT 610T





**LOT 23 NORTHWAY DEPENDABULL 531L**

**MALE DECEMBER 03 2023 2368273 NWC 531L**

BIRTH WT.	205 WT.	365 WT.	ADG	MILK
89	810	1330	3.40	★

*Sire* ELLINGSON ROUGH TERRAIN 9136  
**NORTHWAY DEPENDABULL 274J**  
 NORTHWAY BARDOLIA 89G  
 NORTHWAY SCALE BREAKER 70F  
*Dam* **NORTHWAY HEROINE 406H**  
 PEAK DOT HEROINE 173E

ELLINGSON ROUGHRIDER 4202  
 EA BLACKBIRD 3092  
 PEAK DOT ELIMINATOR 619D  
 PEAK DOT BARDOLIA 2151E  
 HF CROSSFIRE 63D  
 PEAK DOT HYALITE 1112D  
 SCHIEFELBEIN ATTRACTIVE 4565  
 HEROINE OF PEAK DOT 471S



**LOT 24 NORTHWAY DEPENDABULL 536L**

**MALE DECEMBER 01 2023 2368274 NWC 536L**

BIRTH WT.	205 WT.	365 WT.	ADG	MILK
85	816	1368	3.75	★

*Sire* ELLINGSON ROUGH TERRAIN 9136  
**NORTHWAY DEPENDABULL 274J**  
 NORTHWAY BARDOLIA 89G  
 NORTHWAY SCALE BREAKER 70F  
*Dam* **NORTHWAY HEROINE 406H**  
 PEAK DOT HEROINE 173E

ELLINGSON ROUGHRIDER 4202  
 EA BLACKBIRD 3092  
 PEAK DOT ELIMINATOR 619D  
 PEAK DOT BARDOLIA 2151E  
 HF CROSSFIRE 63D  
 PEAK DOT HYALITE 1112D  
 SCHIEFELBEIN ATTRACTIVE 4565  
 HEROINE OF PEAK DOT 471S





**LOT 25 NORTHWAY PROGRESSION 538L**

**MALE DECEMBER 03 2023 2368282 NWC 538L**

BIRTH WT.	205 WT.	365 WT.	ADG	MILK
68	700	1268	3.29	★

*Sire* NORTHWAY SCALE BREAKER 70F  
**NORTHWAY PROGRESSION 496H**  
 PEAK DOT HEROINE 173E  
  
*Dam* HOOVER NO DOUBT  
**PEAK DOT DUCHESS 903E**  
 PEAK DOT DUCHESS 17B

HF CROSSFIRE 63D  
 PEAK DOT HYALITE 1112D  
 SCHIEFELBEIN ATTRACTIVE 4565  
 HEROINE OF PEAK DOT 471S  
 MOGCK BULLSEYE  
 MISS BLACKCAP ELLSTON J2  
 PEAK DOT ELIMINATOR 100Z  
 DUCHESS OF PEAK DOT 610T



**LOT 26 NORTHWAY PROGRESSION 539L**

**MALE DECEMBER 03 2023 2368245 NWC 539L**

BIRTH WT.	205 WT.	365 WT.	ADG	MILK
94	770	1335	3.41	★

*Sire* NORTHWAY SCALE BREAKER 70F  
**NORTHWAY PROGRESSION 496H**  
 PEAK DOT HEROINE 173E  
  
*Dam* PEAK DOT PERFECTION 102D  
**NORTHWAY LADY 156G**  
 LADY OF PEAK DOT 287Y

HF CROSSFIRE 63D  
 PEAK DOT HYALITE 1112D  
 SCHIEFELBEIN ATTRACTIVE 4565  
 HEROINE OF PEAK DOT 471S  
 4M ELEMENT 405  
 PEAK DOT ANNIE K 1066A  
 PEAK DOT BOLD 204U  
 LADY OF PEAK DOT 589T





**LOT 27 NORTHWAY DEPENDABULL 541L**

**MALE DECEMBER 03 2023 2368242 NWC 541L**

BIRTH WT.	205 WT.	365 WT.	ADG	MILK
83	845	1382	3.56	★

*Sire* ELLINGSON ROUGH TERRAIN 9136  
**NORTHWAY DEPENDABULL 274J**  
 NORTHWAY BARDOLIA 89G

*Dam* PEAK DOT PERFECTION 102D  
**NORTHWAY LADY 156G**  
 LADY OF PEAK DOT 287Y

ELLINGSON ROUGHRIDER 4202  
 EA BLACKBIRD 309Z  
 PEAK DOT ELIMINATOR 619D  
 PEAK DOT BARDOLIA 2151E  
 4M ELEMENT 405  
 PEAK DOT ANNIE K 1066A  
 PEAK DOT BOLD 204U  
 LADY OF PEAK DOT 589T



**LOT 28 NORTHWAY PROGRESSION 543L**

**MALE DECEMBER 03 2023 2368323 NWC 543L**

BIRTH WT.	205 WT.	365 WT.	ADG	MILK
94	804	1375	3.51	★

*Sire* NORTHWAY SCALE BREAKER 70F  
**NORTHWAY PROGRESSION 496F**  
 PEAK DOT HEROINE 173E

*Dam* PEAK DOT PRIME 733B  
**PEAK DOT MAYFLOWER 412E**  
 PEAK DOT MAYFLOWER 1129Z

HF CROSSFIRE 63D  
 PEAK DOT HYALITE 1112D  
 SCHIEFELBEIN ATTRACTIVE 4565  
 HEROINE OF PEAK DOT 471S  
 VISION UNANIMOUS 1418  
 ERICA OF PEAK DOT 478U  
 PEAK DOT PIONEER 9X  
 MAYFLOWER OF PEAK DOT 356W





**LOT 29 NORTHWAY PROGRESSION 544L**

**MALE MARCH 12 2023 2368316 NWC 544L**

BIRTH WT.	205 WT.	365 WT.	ADG	MILK
84	802	1389	3.59	★

*Sire* NORTHWAY SCALE BREAKER 70F  
 NORTHWAY PROGRESSION 496H  
 PEAK DOT HEROINE 173E

*Dam* BUBS SOUTHERN CHARM AA31  
 NORTHWAY EVER ENTENSE 361H  
 PINE COULEE EVER ENTENSE X64

HF CROSSFIRE 63D  
 PEAK DOT HYALITE 1112D  
 SCHIEFELBEIN ATTRACTIVE 4565  
 HEROINE OF PEAK DOT 471S  
 SILVEIRAS CONVERSION 8064  
 HICKORY HILL ERICA 009  
 JAUER 353 TRAVELER 589 27  
 SITZ EVERELDA ENTENSE 2198



**LOT 30 NORTHWAY DEPENDABULL 546L**

**MALE DECEMBER 03 2023 2368235 NWC 546L**

BIRTH WT.	205 WT.	365 WT.	ADG	MILK
89	790	1319	3.37	★

*Sire* ELLINGSON ROUGH TERRAIN 9136  
 NORTHWAY DEPENDABULL 274J  
 NORTHWAY BARDOLIA 89G

*Dam* NORTHWAY SCALE BREAKER 70F  
 NORTHWAY HEROINE 285H  
 PEAK DOT HEROINE 173E

ELLINGSON ROUGHRIDER 4202  
 EA BLACKBIRD 3092  
 PEAK DOT ELIMINATOR 619D  
 PEAK DOT BARDOLIA 2151E  
 HF CROSSFIRE 63D  
 PEAK DOT HYALITE 1112D  
 SCHIEFELBEIN ATTRACTIVE 4565  
 HEROINE OF PEAK DOT 471S





**LOT 31 NORTHWAY PROGRESSION 554L**

**MALE DECEMBER 05 2023 2368266 NWC 554L**

BIRTH WT.	205 WT.	365 WT.	ADG	MILK
91	862	1443	3.95	★

*Sire* NORTHWAY SCALE BREAKER 70F  
**NORTHWAY PROGRESSION 496H**  
 PEAK DOT HEROINE 173E

*Dam* HOOVER NO DOUBT  
**PEAK DOT DUCHESS 903E**  
 PEAK DOT DUCHESS 17B

HF CROSSFIRE 63D  
 PEAK DOT HYALITE 1112D  
 SCHIEFELBEIN ATTRACTIVE 4565  
 HEROINE OF PEAK DOT 471S  
 MOGCK BULLSEYE  
 MISS BLACKCAP ELLSTON J2  
 PEAK DOT ELIMINATOR 100Z  
 DUCHESS OF PEAK DOT 610T



**LOT 32 NORTHWAY PROGRESSION 557L**

**MALE DECEMBER 05 2023 2368283 NWC 557L**

BIRTH WT.	205 WT.	365 WT.	ADG	MILK
95	790	1321	3.36	★

*Sire* NORTHWAY SCALE BREAKER 70F  
**NORTHWAY PROGRESSION 496H**  
 PEAK DOT HEROINE 173E

*Dam* HOOVER NO DOUBT  
**PEAK DOT DUCHESS 903E**  
 PEAK DOT DUCHESS 17B

HF CROSSFIRE 63D  
 PEAK DOT HYALITE 1112D  
 SCHIEFELBEIN ATTRACTIVE 4565  
 HEROINE OF PEAK DOT 471S  
 MOGCK BULLSEYE  
 MISS BLACKCAP ELLSTON J2  
 PEAK DOT ELIMINATOR 100Z  
 DUCHESS OF PEAK DOT 610T





**LOT 33 NORTHWAY DEPENDABULL 559L**

**MALE DECEMBER 05 2023 2368322 NWC 559L**

BIRTH WT.	205 WT.	365 WT.	ADG	MILK
90	792	1320	3.37	★

*Sire* ELLINGSON ROUGH TERRAIN 9136  
**NORTHWAY DEPENDABULL 274J**  
 NORTHWAY BARDOLIA 89G  
*Dam* NORTHWAY SCALE BREAKER 70F  
**NORTHWAY LADY 359H**  
 PEAK DOT LADY 2022E

ELLINGSON ROUGHRIDER 4202  
 EA BLACKBIRD 3092  
 PEAK DOT ELIMINATOR 619D  
 PEAK DOT BARDOLIA 2151E  
 HF CROSSFIRE 63D  
 PEAK DOT HYALITE 1112D  
 HOOVER NO DOUBT  
 PEAK DOT LADY 487A



**LOT 34 NORTHWAY DEPENDABULL 561L**

**MALE DECEMBER 06 2023 2368320 NWC 561L**

BIRTH WT.	205 WT.	365 WT.	ADG	MILK
82	830	1395	3.82	★

*Sire* ELLINGSON ROUGH TERRAIN 9136  
**NORTHWAY DEPENDABULL 274J**  
 NORTHWAY BARDOLIA 89G  
*Dam* HOOVER NO DOUBT  
**PEAK DOT DUCHESS 903E**  
 PEAK DOT DUCHESS 17B

ELLINGSON ROUGHRIDER 4202  
 EA BLACKBIRD 3092  
 PEAK DOT ELIMINATOR 619D  
 PEAK DOT BARDOLIA 2151E  
 MOGCK BULLSEYE  
 MISS BLACKCAP ELLSTON J2  
 PEAK DOT ELIMINATOR 100Z  
 DUCHESS OF PEAK DOT 610T





**LOT 35 NORTHWAY DEPENDABULL 571L**

**MALE DECEMBER 09 2023 2368215 NWC 571L**

BIRTH WT.	205 WT.	365 WT.	ADG	MILK
79	720	1293	3.3	

*Sire* ELLINGSON ROUGH TERRAIN 9136  
**NORTHWAY DEPENDABULL 274J**  
 NORTHWAY BARDOLIA 89G


*Dam* HOOVER NO DOUBT  
**PEAK DOT DUCHESS 903E**  
 PEAK DOT DUCHESS 17B

ELLINGSON ROUGHRIDER 4202  
 EA BLACKBIRD 3092  
 PEAK DOT ELIMINATOR 619D  
 PEAK DOT BARDOLIA 2151E  
 MOGCK BULLSEYE  
 MISS BLACKCAP ELLSTON J2  
 PEAK DOT ELIMINATOR 100Z  
 DUCHESS OF PEAK DOT 610T



**LOT 36 NORTHWAY DEPENDABULL 573L**

**MALE DECEMBER 10 2023 2368285 NWC 573L**

BIRTH WT.	205 WT.	365 WT.	ADG	MILK
82	790	1308	3.36	

*Sire* ELLINGSON ROUGH TERRAIN 9136  
**NORTHWAY DEPENDABULL 274J**  
 NORTHWAY BARDOLIA 89G

*Dam* PEAK DOT MASSIVE 156F  
**NORTHWAY PANSY 165H**  
 NORTHWAY PANSY 88F

ELLINGSON ROUGHRIDER 4202  
 EA BLACKBIRD 3092  
 PEAK DOT ELIMINATOR 619D  
 PEAK DOT BARDOLIA 2151E  
 HOOVER NO DOUBT  
 PEAK DOT BARDOLIA 1026Z  
 HF CROSSFIRE 63D  
 PEAK DOT PANSY 2165D



## LOT 37 - 66

30 lots will be offered, each consisting of 5 commercial Northway influenced Black Angus heifers.

*How to participate in the  
DLMS Farm Gate Timed Auction  
with Extended Bidding:*



Thursday, May 1 - 6 PM MST - bidding begins

Friday, May 2 - 6 PM MST - auction closes farmgate style

1. Visit <https://farmgatetimedauctions.ca>, click the LOGIN/REGISTRATION button. First time users will select the REGISTER button from this page. Fill out the registration form to sign up for a free user account and it allows you to select a user name and password for use on all Farm Gate Timed auctions. This program will send you text and email messages whenever there is activity on your favorite lots or someone challenges your proxy bid and this is why you will be asked for both your current email and cell phone number. If you are a past participant in the Farm Gate Timed auctions simply enter your user name and password to continue. This takes you to a list of both current and upcoming Farm Gate Auctions.
2. You can choose your favorite lots in this sale at this time and the program will allow you to open either all sale lots or just your favorite lots on your screen. Anytime there is active bidding on a lot you have identified on your favorite list you will get a text and/or an email noting this activity.
3. The program allows you to place a proxy bid on any sale lot. This in fact protects your interest in any lot of interest for you to a specified dollar value you set, when you may not be able to give 100% attention to the sale. If the lot has a \$2000 bid on it and you place a proxy bid of \$3500 into the system, the computer will bid \$2100 for you but if someone else bids \$2200, the computer will again bid for you, this time at \$2300. The system will look after your interest to a maximum of \$3500. If another bidder is on at \$3600, your proxy will no longer be effective and you will not longer have the winning bid on this lot without once again logging in and bidding again or moving your attention to a second lot of interest.
4. At closing time of the sale the entire sale will extend bidding for 5 minutes if a bid is placed on any lot in the sale. Any bid received after 6 PM MST will extend the sale by 5 minutes from the time of that bid. When no bidding occurs for 5 min the computer will declare the sale finished.
5. Within 24 hours of the sale close DLMS will contact all winning bidders to arrange payment, transfer of pedigrees and deliver/pickup of your lot.

If you require assistance with using the DLMS Farm Gate website, if you don't understand how to create a favorites list, if you can't figure out the proxy bid or you just plain want to bid via phone, please talk to any of the DLMS team or Northway Cattle Co.

**WHAT IS RACEHORSE STYLE SALE CLOSE?** Racehorse style sale close is when the entire sale stays open in extended bidding. This type of sale allows you as the bidder to change to a different lot within the same sale if the bidding has gone into extended bidding.

**HOW WILL EXTENDED BIDDING WORK?** When we get to the close out end time the clock for close extends with any bid placed with less than 5 min on the clock. This type of extended bidding turns the end time to more of a soft time. Extended bidding allows bidders to compete in lots like a real auction and gives all bidders the same time to make a decision. Always follow the clock to see how much time remains in the sale you are interested in.

If you require assistance with the Racehorse auction process or bidding via phone talk to any of the DLMS team or Northway Cattle Co. and we can help you in purchasing the lot you are interested in.

DLMS - Mark Shologan - 780.699.5082



*Return to:*

Bohrson Marketing Services

28336 TWP RD 320

MOUNTAIN VIEW COUNTY, AB T4H 4M7

If you wish to stop receiving catalogues from BMS,  
please email [jodi@bohrson.com](mailto:jodi@bohrson.com) or call/text  
403-519-3515 to be removed from the mailing list



RETURN POSTAGE GUARANTEED  
PORT DE RETOUR GARANTI



# NORTHWAY

cattle co.

