

A herd of black Angus cattle is silhouetted against a bright sunset sky. The cattle are gathered in a grassy field, with a line of trees in the background. The sky transitions from a deep blue at the top to a warm orange and yellow near the horizon.

CANADIAN ANGUS FOUNDATION'S
BUILDING 13
the **LEGACY**

THURSDAY, JUNE 12, 2025, WINNIPEG, MB
LIVE SALE 6:30 P.M. CDT.

TIMED AUCTION CLOSES FOLLOWING LIVE SALE



BUILDING **13** the LEGACY



Shawn Birmingham CHAIR, CANADIAN ANGUS FOUNDATION

Welcome to the 13th Annual Building the Legacy Sale. Once again it is an exciting offering and for those that have decided to donate, I extend sincere thanks. The Foundation is a very important branch of the Canadian Angus Association. It provides opportunities for all Canadian Angus members through our various programs that help to continue to build and improve Angus in Canada. It is important for those involved in the Association on all levels to remember that we are all working to continue to make our Association great. Canadian Angus, the Foundation and the Junior Association all have the same goal at the end of the day – to ensure our future. The Foundation has always strived to help build the Association in any way it can and this will not change. Once again thank you to all past and present donors and buyers, without you this sale wouldn't be possible and the goals of the Foundation would not be achievable.



Chad Lorenz CHAIR, BUILDING THE LEGACY SALE COMMITTEE

With great anticipation and appreciation, we present Building the Legacy 13 (BTL)! For 13 years this event has been the main avenue to generate funds for the greater good of our Angus circle, including youth development and opportunity, research projects, and the preservation of our history and archives. This sale and the success of our Canadian Angus Foundation is made possible by two facets, our generous donors, and the volunteers who contribute their time. On behalf of the Sale committee, I want to extend our gratitude to all the breeders, businesses and individuals who have given to our charity! Because of you all, we are able to forge a path for the greater good.

New to this 13th edition of BTL, is a hybrid sale format, with the auction being split between the traditional live sale held at the Canadian Angus AGM and Convention and an online only portion, that will closeout following the live sale via Farm Gate timed auctions. We have an exclusive offering of Angus genetics, memorabilia, vouchers, credits, art and experiences. The front end of the catalogue features a pick, a heifer calf, and choice of a pregnant recipient. These

breeders are donating progressive genetics right from the heart of their breeding program. The assembly of frozen genetics is highlighted by many of the high selling bulls in North America from this past sale season and several of the most iconic sires in the breed. I ask that breeders from across Canada consider bidding on the many service vouchers that were generously donated by the professionals within our industry.

I encourage all Angus enthusiasts to attend the Convention and AGM in June, it is your opportunity for Angus fellowship and to be part of the direction of the Canadian Angus Association. Please feel free to contact any of the sales staff, who have kindly donated their time and expertise. The live sale will be broadcast on DLMS which will include a link to the online portion as well. See you all in Winnipeg on June 12, for Building the Legacy 13!



Ronnie Ford PRESIDENT, CANADIAN ANGUS ASSOCIATION

Hello and welcome to the 13th Building the Legacy Sale. The "Building the Legacy Sale" is an annual fundraising auction organized by the Canadian Angus Foundation (CAF). It's with great pleasure that I welcome you to this prestigious event with donations being made from all across our great country. The items include picks of live cattle lots, semen, embryos, trips and different offerings nation wide. Today, we come together to build upon that legacy, ensuring that the Canadian Angus Foundation continues to thrive for years to come. The items graciously donated annually support junior scholarships, travel opportunities, education, leadership development, and building our future with research and preservation of history for the members. I had the opportunity to travel to Showdown in Grassie, Ontario last July where there were juniors representing every province learning life skills, meeting fellow members with similar interests and making new friendships. I am looking forward to this year's sale offering in Winnipeg and I encourage you to attend. The CAF board of directors continues to invest time and commitment into this meaningful event. Let's come together and make this a sale to remember.

BUILDING the LEGACY 13



LIVE LOTS ARE DESIGNATED WITH AN L BESIDE THE NUMBER AND FARM GATE LOTS ARE DESIGNATED WITH AN F BESIDE THE NUMBER

Member Awards 5:30 PM, live sale to follow
Thursday, June 12, 2025 • 6:30 PM
Fort Garry Hotel • Winnipeg, MB

AUCTIONEER

Ryan Hurlburt 306-292-9812

SALES CONSULTANTS

Scott Bohrson
Bohrson Marketing Services 403-370-3010
Rob Voice
Bohrson Marketing Services 306-270-6082
Taylor Richards
Bohrson Marketing Services 306-821-4169
Jaxon Payne
Bohrson Marketing Services 306-830-0456
Shane Castle
Castlerock Marketing 306-741-7485
Chad Lorenz
Castlerock Marketing 403-896-9585
Mark Holowaychuk
OBI Livestock Ltd 403-896-4990
Roger Peters
OBI Livestock Ltd 403-828-9815

For more lot information, please contact the donor or:

Belinda Wagner • bwagner@cdnangus.ca • 306-537-1518
Myles Immerkar • ceo@cdnangus.ca • 403-542-2088

INTERNET BIDDING

DLMS www.dlms.ca
Mark Shologan 780-699-5082
DLMS Tech Support Team 780-991-3025



TERMS OF SALE

- Purchaser is responsible for shipping costs and transportation of live lots.
- Contact the donor and arrange for transfer within 90 days of the sale date.
- No guarantees are made, lots are sold as is.
- The Canadian Angus Association's Breeder's Guarantee .. Guidelines will be followed for all "cattle" lots.

New for 2025! Hybrid live and Farm Gate Sales

1. Visit dlms.ca and follow the link to the DLMS FarmGate timed auction site www.farmgatetimeductions.ca, click the LOGIN/REGISTRATION button.

First time users will select the REGISTER button from this page. Fill out the registration form to signup for a free user account and it allows you to select a username and password for use on all Farm Gate Timed auctions. This program will send you text and email messages whenever there is activity on your favorite lots or someone challenges your proxy bid and this is why you will be asked for both your current email and cell phone number. If you are a past participant in the Farm Gate Timed auctions simply enter your user name and password to continue. This takes you to a list of both current and upcoming Farm Gate Auctions.

2. You can choose your favourite lots in this sale at this time and the program will allow you to open either all sale lots or just your favorite lots on your screen. Any time there is active bidding on a lot you have identified on your favorite list you will get a text and/or an email noting this activity.

3. The program allows you to place a proxy bid on any sale lot. This in fact protects your interest in any lot of interest for you to a specified dollar value you set, when you may not be able to give 100% attention to the sale. If the lot has a \$2000 bid on it and you place a proxy bid of \$3500 into the system, the computer will bid \$2100 for you but if some one else bids \$2200, the computer will again bid for you, this time at \$2300. The system will look after your interest to a maximum of \$3500. If another bidder is on at \$3600, your proxy will no longer be effective and you will no longer have the winning bid on this lot without once again logging in and bidding again.

4. At closing time of the sale the entire sale will extend bidding if a bid is placed on any lot in the sale. Any bid received after close time will extend the sale by the time listed on each sale. In most cases the time gets shorter the longer in to extended bidding the sale is. When no bidding occurs for the extended time the computer will declare the sale finished.

5. Following the sale the Canadian Angus Foundation will invoice all buyers in the sale, please contact the donor with questions or to arrange delivery, pick up or shipping of your purchases.

WHAT IS RACEHORSE STYLE SALE CLOSE? Racehorse style sale close is when the entire sale stays open in extended bidding. This type of sale allows you as the bidder to change to a different lot within the same sale if the bidding has gone in to extended bidding.

HOW WILL EXTENDED BIDDING WORK? When we get to the close out end time the clock for close extends with any bid placed with less than 5 minutes on the clock. This type of extended bidding turns the end time to more of a soft time. Extended bidding allows bidders to compete in lots like a real auction and give all bidders the same time to make a decision. Always follow the clock to see how much time remains in the sale you are interested in.

Timed Auctions Made Easy

For help with bidding or creating an account please call any of the DLMS Team:

Purebred Support Line
780.991.3025

Special thanks to our 2025 donors

Allflex
Alta Genetics
Anderson Cattle Co.
Bar-E-L Angus
Bar-H Land and Cattle
BC Angus Association
Belvin Angus
Bohrson Marketing/Canadian Sires
Bova-Tech
Bovigen
Bow Valley Genetics
Brooking Angus Ranch
Bullseye Feeds
Camo Cattle Co.
Canadian Angus Association
Certified Angus Beef
Cudlobe Angus
Cudlobe Angus West
DJ Cattle Co.
Davis-Rairdan Embryo Transplants Ltd.
DLMS/CattleVids
Eastondale Angus
Elk Ridge Farms
Everblack Angus
Fraser Farms
Genex
Glasman Farms Ltd.
Golden Thread Livestock Images
Gone West Media
Grand River Angus
Hamilton Farms
Intercity Packers Meat and Seafood
JAS Red Angus
Jaymarandy Livestock
JP Cattle Co.
KCH Cattle Co.
Lewis Farms
M & J Farms
Mac Angus Farms
Madsen Angus
Mar Mac Farms
Miller Wilson Angus
Murray Ranches
Nolan Cattle Co.
OBI Livestock Ltd.
Peak Dot Ranch
Piro Red Angus
Poplar Meadows Angus
Prairie Pistol Designs
Pursuit—Banff Jasper Collection
Rocking Heart Range
Saskatchewan Angus Association
Scott Stock Farm
Semex
Six Mile Ranch
Soo Line Cattle Co.
T Bar C Cattle Co.
Towaw Cattle Co.
Triple L Angus
U2 Quality Seedstock
Windy Ridge Ultrasound
Wright Livestock

Thank you ^{and} to our past Building the Legacy donors

8 C's Cattle Co. 2018
Aberdeen Angus Cattle Society 2016
ABS Global Inc 2013
Accelerated Genetics 2016
Allandale Angus 2019
Alberta Angus Association 2014, 2018
Allflex Canada 2015, 2019, 2022–24
Allison Farms Red Angus 2018
Alta Genetics 2012–24
American Angus Association 2016
American Angus Hall of Fame 2013–14, 2017
***Anderson Cattle Co. 2017, 2023
AngusBreeder.net—PJ Budler 2017
*** Arda Farms/Freeway Angus 2015
Artisan Farms 2016–19
Aspen Hill Angus 2017
Atlasta Angus 2015, 2019
Austen Anderson 2012, 2014, 2017, 2021
Avula Safaris 2018
Bandura Ranches 2012, 2016
Bannockburn Maples Angus 2016
Bannockburn Valley Farm 2016, 2021
Bar 5 Stock Farms 2023–24
Bar-E-L Angus 2013, 2015–22
Barry LaBatte 2016, 2019
Basin Angus 2019
BC Angus Association 2017
BeefSmart Consulting Inc. 2021
Belinda Wagner 2014–18, 2021
Belvin Angus 2012, 2019, 2023–24
Benchmark Angus 2019–23
Bill and Tyler Fulton 2013
Blacklane Farms 2016–18
Blairs.Ag Cattle Co. 2012–18, 2021, 2023
Blairswest Land and Cattle 2017
Blue Mountains Angus 2019
Bluewater Angus Club 2024
BNK Cattle Co. 2023
Boehringer Ingelheim Animal Health Canada Inc. 2021
Border Butte Angus 2012
Boss Lake Genetics 2018
Botany Angus 2017
Bouchard Livestock International 2016–18, 2021–22
Bova-Tech 2021–24
Bovigen 2024
Bow Valley Genetics Inc. 2012, 2014–24
Bridgeway Livestock 2023
Brooking Angus Ranch 2014, 2016–17, 2019, 2023–24
Calgary Stampede 2015
Canadian Angus Association 2012–24
Canadian Cattlemen Magazine 2024
Canadian Sires—a division of Bohrson Marketing Services 2014–21
Canadian Western Agribition 2014–16
Castlerock Marketing 2023
CCIA 2022
C.D. Land & Cattle 2018
Certified Angus Beef 2023–24
Chapman Cattle Company 2019, 2022
Christian Moulding 2022
Clarke Family Farms Inc. 2024
Cliffhanger Signs & Designs 2022
Cockburn Red Angus 2018
Coleman Angus 2023–24
Coul Angus—James Arnott 2021–24
*** Crescent Creek Angus 2017–18, 2022–24
CSI Angus 2015, 2023–24
*** Cudlobe Farms 2012–13, 2015–24
Dave & Yvonne Hinman 2017
Davis-Rairdan International 2013, 2021–24
Dead Wood Furniture 2014
Delorme Ranch 2017
Dennis & Shelly Ericson 2021
Diamond C Ranch 2017
Diamond T Cattle Co. 2015–16
DJH & Associates Ltd. 2013
DLMS/CattleVids 2017–24
Dorran Marketing Inc. 2014–16
Doug & Kathy Fee 2015
Dr. Dale Aylward 2019
*** Dwajo Angus 2014, 2019
*** Eastondale Angus 2014, 2017, 2022, 2024
Ebon Hill Farms 2016–2017
EBY Trailers 2019
Enright Farms 2017–18, 2024
Erin Yewsiuk Photography 2022–23
Everblack Angus 2019, 2022
EverythingAngus.com 2012
Eye Hill Stock Farm 2019
*** Ferme Clevely 2014, 2016
Ferme des Collines 2015–16
*** Ferme Gagnon Inc. 2016
Flat Top Cattle Co. 2021
Flesch Farms Inc. 2018
*** Fleury Cattle Company 2023
Forsyth Ranch 2014
French River 2012
Gail Wildman 2016–18, 2021
Garvie Mountain Angus 2015–17, 2022
Gavin Cattle Co. 2021
Geis Angus 2021–24
GenerVations 2013
Genex 2013–2014, 2024
Get-A-Long Stock Farm 2021
***Gilchrist Farms 2016–18, 2024
Glacier FarmMedia—Mike Millar 2016–23
Graham & Karen McLean 2021, 2023
Glen Gabel Angus 2018–19
Glen Islay Angus 2013, 2024
Goad Family Angus 2017
Golden Thread Livestock Images 2019, 2022
Grady C. Dickerson 2018

Graham & Karen McLean & Family 2022
Greenwood Limousin & Angus 2018, 2024
Greg Comstock & Doug Fee 2012
GRP—Grant Rolston Photography 2015–16
***Hamco Cattle Co. 2017
Hamilton Farms 2013–15, 2018–22
Harprey Farms 2024
***Harvest Angus 2014, 2017–19
HBH Farms Inc. 2017
Heart of the Valley Farms 2018
Heart Valley Angus 2017
Henderson Cattle Co. 2015–17
Hidden Creek Farm Inc. 2017
Hillberg & Berk 2014
Hollinger Land & Cattle 2015, 2022–24
Holtby Farms 2019
Home Grown Photography & Design 2021–22
Howe Family Farm 2016, 2019
Ian Selte 2017
Indian River Cattle Co 2024
Intercity Packers Meat & Seafood 2023-24
Iris Creek Farms 2024
J Bar Dee Farms 2018
James Arnett, Coul Angus 2015, 2017–19, 2021
JD Farms 2016–17
JEM Farms 2022
Jenna Loveridge Photography 2021
Jessica Davey Photography 2021
*** Johnson Livestock Angus 2014, 2016
Jordan Buba Livestock Photography 2022–23
JPD Angus 2024
JPM Farms 2023
Justamere Farms Ltd. 2013–16, 2018
Justin Carvey Fitting 2021
K3 Ranch 2019
Kane Veterinary Supplies 2015, 2019
KBJ Round Farms 2016, 2021, 2023-24
Kemp Family Livestock 2017
Kenray Ranch 2021
Keystone Angus 2021
Kiani Evans 2021
Kolby Heaven 2017
KT Ranches 2023
*** Lauron Red Angus 2015, 2019
Lazy MC Angus 2013–15, 2018
Lee & Leanne Carfantan 2012
*** Leeuwenburgh Angus 2015–16
Lewis Farms 2015, 2019, 2022–24
Lisle Livestock 2024
Livestock Plus 2021
*** LLB Angus 2012–2013
Lock Farms Ltd. 2022
Lookout Stock Farm 2012
Lorenz Angus Farm 2012
M & J Farms 2021–22
Mac Angus Farms 2016, 2022–24
MacKinnon Homestead 2021
Manitoba Angus Association 2016, 2021–22, 2024
Maple Leaf Sports & Entertainment 2021
Mar Mac Farms 2013–14, 2017
Maritime Angus Association 2019
Martin Deerline 2021
Maureen Tubman of Show Champions 2023
McEntire Red Angus 2017
McEwen's Fuels & Fertilizer 2021–22
Meadow Bridge Angus 2024
Melmac Farms 2022

***Merit Cattle Co. 2017, 2022–24
Mexican Angus Association 2015
Miller Wilson Angus 2012–24
Minburn Angus 2018
MJT Cattle Co. 2017, 2019, 2023
Mogcks Angus Farm 2017
Morgan A.I. Services 2021
Mount Tremblant Resort 2016
Nelson Hirsche Purebreds 2017
Netherton Angus 2016
New Life Mills 2021
New Rosedale Feeds 2021
Nordal Angus 2017–18
Norheim Ranching 2021
Northern Alberta Angus Club 2021
Northline Angus 2013, 2016–17, 2021
Nu-Horizon Angus 2017
Nutrien Ag Solutions 2021
Oberle Circle 7 2016, 2019
OBI Livestock Ltd. 2021–24
Ole Farms 2016
Ontario Angus Association 2023
Order of Duty Syndicate 2017
Otter Creek Farms 2017–18
Paige Albrecht Fine Art & Leather 2016
Park Mazda 2021–22
Peak Dot Ranch Ltd. 2013–14, 2022–24
Peak Veterinary Health 2022–23
Peter J. Campbell 2015
Pieper Red Angus 2017
Piro Red Angus 2024
Ponoka Stampede 2024
Poplar Meadows Angus 2013–14, 2016–19, 2023-24
Prairie Pistol Designs 2014
Premier Livestock/Hasson Cattle Co./Clear
View Angus 2017–19, 2022
Premier Livestock 2024
Proven Seed 2021–22
Pugh Farms 2021
Pursuit Banff Jasper Collection 2023–24
Quebec Angus Association 2015
Quick Dick McDick 2021
Radisson Hotel & Conference Centre 2014
Rafters D4 Cattle Co. 2024
Rage Syndicate 2017
Rainbow Red Angus 2014, 2019
Rainbow Trailers Inc. 2017
Ramada Plaza Regina 2014
Ramblin' Rose Creative 2021
Ranch Covey Hill 2022–24
Ranchland Veterinary Services 2021
Ranch Revival 2021
Rebecca Shuttleworth 2019
Red Eagle Acres 2021
***Red Moon Angus 2018
***Redrich Farms 2014–16, 2018
Reich Angus 2019
Reid Angus 2015–18
Remitall Farms 2013, 2015–18, 2022
Resby Couetts 2021
Richmond Ranch Ltd. 2016–18
Riverside Angus 2023
Rob Holowaychuk, OBI 2015–17
Rock Point Angus 2018
Rocking Heart Range 2024
Rolling Meadows Farms 2024
*** Rodgers Red Angus 2015

RSL Red Angus 2017
Rust Mountain View Ranch 2016, 2019
Sandy Margetts 2012
Saskatchewan Angus Association 2021–24
Saskatchewan Beef Industry Conference 2014
Saskatchewan Roughriders 2014
Saskatchewan Stock Growers Beef Business 2023
*** Sealin Creek Ranch 2018
Select Sires 2013–14, 2016
Semex 2013–2018, 2021–24
Service Animal Noiseux Enr 2016
SE Saskatchewan Angus Showcase 2021
Sheidaghan Anghus 2022
ShowChampions 2019
Shiloh Cattle Co. 2019, 2021, 2023
Six Mile Ranch Ltd. 2013–22
Slack Farms 2018
Smithbilt Hats Inc. 2015
Southern Alberta Angus Club 2021–22
*** South View Ranch 2014, 2017, 2019
Spruce Meadows 2015
Stauffer Ranches 2019
Steve & Terri Dorran 2016–17
Still Meadows Farm 2018
Story Brokers 2021
Sunberry Valley Ranch 2016
Susan Thompson 2014
SW Saskatchewan Angus Tour 2022
T Bar C Cattle Co. 2013–2019
Tambri Angus 2016–18, 2022–24
T-Down Trailers Ltd. 2019
Team Koe 2021
Telus Agriculture 2024
Temple Gardens Mineral Spa Resort 2014
Ter-Ron Farms 2013, 2015–16, 2018–19, 2024
Thistle Ridge Ranch 2019
Tina Zakowsky 2022
Thomas Wildman 2021
Today's Publishing 2019
Towaw Cattle Co. Ltd. 2012–19, 2024
Triple L Angus 2018, 2024
Triple S Cattle Co. 2013, 2015, 2017
TSN Angus 2017, 2019
***Tullamore Angus 2014–16, 2024
Tyler Harris Photography 2021–22
U-2 Ranch 2015–16, 2018
Vikse Family Farms 2016
Viper Technology Group 2021
Vision 2000 2014
Vos Vegas Farms 2024
W. Sunrise Angus 2017–18
Wayne & Arlene Gallup 2016
Western Litho Printers 2022
Wheatley River Angus Farm 2021–22
*** Wheeler's Stock Farm 2014, 2016–17, 2023
*** Wilbar Cattle Co. 2014, 2018–19, 2022
Windy Ridge Ultrasound 2021–24
Wood Coulee Cattle Co. 2016–17
Worth-a-Bit Angus 2016, 2021
Worth-Mor Cattle 2023–24
*** WRAZ Red Angus 2017
Wright Livestock 2024
*** Young Dale Angus 2014, 2017, 2021, 2023
Zoetis 2015–16
*** indicates donor of a "Pick-of-the-Herd" Heifer"

**15%
OF A LOT
MEANS
A LOT**



**With YOUR
help we will
continue to further
our mission and
the breed.**

Since 2019 almost \$400,000 has been **INVESTED** in member education, awards, bursaries and youth scholarships.

\$295,000 invested in **ANGUS** research over the last six years leveraged an additional \$600,000 in grant funding.

\$75,000+ has been invested in history and archives, including the 2019 Canadian Angus history book.

The Canadian Angus Foundation functions to preserve and expand the Angus breed for future generations through education, youth development, scientific and market research, and historical preservation and restoration. The Canadian Angus Foundation was incorporated in 1993 and is the charitable arm of the Canadian Angus Association. Donations are tax deductible.

Thank You
**TO THIS SALE SEASON'S
DONORS**



66 Ranch Ltd.
Allison Farms
Anchor 1 Angus
Anderson Cattle Co.
Arda Farms
Burnett Angus
C & L Beasley Cattle Ltd.
Count Ridge Red Angus
Crescent Creek Angus
Cudlobe Angus
Cudlobe Angus West
Dwajo Angus
Flying K Ranch
Freeway Angus
Freyburn Angus Farms
Justamere Farms

Lauron Red Angus
Murray Ranches
Nordal Angus
Redrich Farms
Rio Grande Angus
Shiloh Cattle Co.
South View Ranch
Sudden Impact Bull Sale -
Triple L Angus
Wooden Spoke Land & Cattle
Wright Livestock
Ter-Ron Farms
Towaw Cattle Co.
Wilbar Cattle Co.
Windy Willows Farms

**YOUR DONATION OF 15% OF AN ANIMAL TO SELL IN 2025
WILL HELP GROW YOUR CANADIAN ANGUS FOUNDATION**



If you are interested in giving back or learning more about this initiative, please contact Belinda Wagner, Canadian Angus Foundation Executive Director at 306-537-1518 or email bwagner@cdnangus.ca. You can also visit the Canadian Angus Foundation website at www.cdnangus.ca/foundation.

LOT 1L PICK OF 2025 Heifer Calves



KENRAY MERIT RED BOSS 31H



BLK BRYLOR OTM SOUTH POINT 3K



FRASER POKER FACE 613D



RED BRYLOR OTM COPENHAGEN 9K



Heifer calves like these from herd sires like those!

We are proud to offer our pick of our calendar year heifer calves. Sires such as Copenhagen 9K, South Point 3K, Red Boss 31H, Stamp 3L as well as several other unique combinations.

Many of these females will be out of dams sired by outcross cows sired by Answer 10X, Eliminator 241E and Resource 23F. Lots of strong maternally bred pedigrees from both the red and black sides of the breed.

Selection to be made by September 1st.

donated by
Fraser Farms

Jeff & Nancy Fraser
Jeff: 204-522-5964

Dez Ramsey: 204-212-1936
jeff.fraser@live.ca



LOT 2L

HEIFER CALF - MADSENS *Socialite* 27N

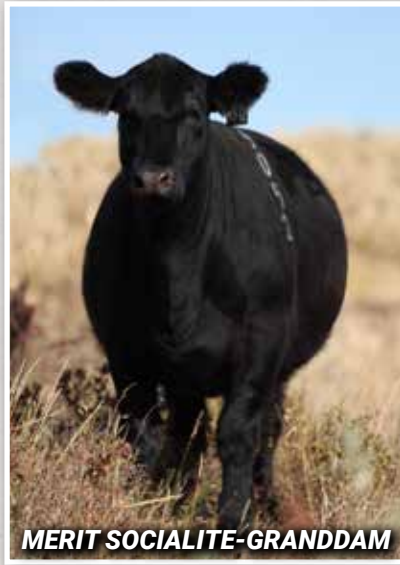
Applied for TMF 27N Feb 17, 2025



MATERNAL BROTHER TO SOCIALITE 27N



SIRE- RRW KANE 307L



MERIT SOCIALITE-GRANDDAM

DL RAINMAKER 1879
SIRE RRW KANE 307L
 RAMROD KANDY 111J
 HLC GRIT 705H
DAM MADSEN'S SOCIALITE 37K
 MERIT SOCIALITE 9042G

The McLaren's and the Madsen's are very pleased to be supporting the Foundation's fundraiser this year. We are very confident Madsen's Socialite 27N will be a good fit for most herds across this country. We will have her show ready for the fall run if the new owner so desires.

The HLC Grit 705H daughters are among some of the top females in our herd and he also sired our high selling group of bulls in the 2024 edition of the Buy the Beef Bull Sale. 27N's maternal brother Temptation 11M was part of our show string last fall, her sire RRW Kane has sired a very eye appealing jet black set of calves with a real presence to them.



donated by
**MADSEN
 ANGUS**

Madsen Angus
 Arden, MB
 Tom & Allana Madsen
 204-841-1757
 Holly Madsen
 204-463-0525
 hollymadsen98@gmail.com



donated by

JAS Red Angus

JAS Red Angus
 Neepawa, MB
 Jason & Leslie McLaren &
 family 204-476-6723
 Doug & Jane McLaren
 204-476-6248
 jasredangus@outlook.com

LOT

3L

PREGNANT RECIPIENT CHOICE

Options will include but not limited to:

HLC *Erica* 561G X ELLINGSON *Prolific*



HLC CSI *Erica* 354M, daughter of 561G

BLAIRS *Madame Pride* 737G X RED DUFF *HD* 2046



S A V *Madam Pride* 0151, Grand Dam

RED SIX MILE & CO *Gloria* 29A X RED U-2 *Reckoning* 149A



Red Six Mile *John Wick* 882E,
full sib to pregnancy

RED BLAIRS *Nice* 25Y X RED *Blairs Bings* 581B



Camo Cattle Co. is pleased to be supporting the 13th edition of the Building the Legacy Sale with a unique choice lot. There will be over **20 matings** to choose from with two implant dates - May 2 and May 22! The winning bidder will have until November 1st to decide. Some of the options that will be implanted are pictured here.

donated by



Camo Cattle Co.
Cam Tibbett and family (204)841-3060
tibtett_8@hotmail.com
www.camocattle.ca



LOT

BLAIR'S *Barbara* 621E X SCHIEFELBEIN *Gable* 311

1 PACKAGE OF
2 EMBRYOS

4L

1980970 BBC 621E Mar. 1, 2017 | 2248812 IMP 311J Jan. 24, 2021



| | | | | | |
|------------------|----------------|--------------|---------------|----------------|---------------|
| SIRE EPDS | BW -0.1 | WW 98 | YW 168 | MILK 24 | CEM 13 |
| DAM EPDS | BW 2.5 | WW 61 | YW 99 | MILK 7 | CEM 4 |

SITZ RESILIENT 10208

SIRE SCHIEFELBEIN GABLE 311

FROSTY ELBA LIZZY 5569

DUFF NAPOLEON 232

DAM BLAIR'S BARBARA 621E

BARBARA OF PEAK DOT 505S

A genetic masterpiece of a mating. 621E is the photogenic /phenotype cow you just love to stare at all day with a pedigree that spells quality. Her offspring are the future up and comers here at JP as she has been used extensively. To top it off, Gable is the go-to low BW bull you cannot buy semen on in Canada. Between our own bull sale, Peak Dot & LLB over 45 sons sold with an average price in excess of \$18,000. This combination isn't one that you buy every day of the week.

donated by

JP Cattle Co. — Find them on Facebook

Glenn Lowes 204-851-5669 and Barry Lowes 204-851-0342 • jalynfarms@gmail.com

LOT

HF *Tibbie* 93U X BAR-E-L *Royal Mint* 88G

2 PACKAGE OF
3 EMBRYOS

5L A & B

1447474 HAMI 93U Jan. 12, 2008 | 2121974 YHB 88G Feb. 20, 2019



| | | | | | |
|------------------|---------------|--------------|---------------|----------------|--------------|
| SIRE EPDS | BW 1.8 | WW 72 | YW 127 | MILK 24 | CEM 7 |
| DAM EPDS | BW 0.3 | WW 43 | YW 77 | MILK 28 | CEM 8 |

LD CAPITALIST 316

SIRE BAR-E-L ROYAL MINT 88G

HF EVENING TINGE 38C

S A V 004 PREDOMINANT 4438

DAM HF TIBBIE 93U

HF TIBBIE 35K

Bar-E-L Royal Mint has solidified himself as one of 316's finest breeding sons. His lasting impact will be his daughters which are fast becoming outstanding brood matrons in the Bar-H herd. HF Tibbie 93U needs no introduction as her impact on the Angus breed has been well documented.

Bar-H will guarantee 1 pregnancy on 3 embryos.

Embryos are stored at Bovigen, Moose Jaw.

donated by

**Bar-H Land & Cattle Co. — Robin, Michelle & John Hogberg • www.barh.ca
John 306-496-7696 and Robin 306-743-2840 • rthogberg@sasktel.net**

LOT JAYMARANDY *Grace* JLMA 640D X DMM *International* 54D

1 PACKAGE OF
2 EMBRYOS

6L

1896568 JLMA 640D Feb 10, 2016 | 1922656 DMM 54D Feb 12, 2016



In 2016 this combination stood at their dam's sides and respectively won their divisions at Canadian Western Agribition. While International went on to win Champion female and the Supreme with his dam Blackbird 105A, Grace 640D came home and gave us her first super successful flush. Yes, we flushed a virgin heifer and it was well worth the sacrifice. Grace

| | | | | | |
|-----------|--------|-------|-------|---------|--------|
| SIRE EPDS | BW 4.4 | WW 60 | YW 95 | MILK 25 | CEM -1 |
| DAM EPDS | BW 2.2 | WW 53 | YW 85 | MILK 30 | CEM 4 |

S A V INTERNATIONAL 2020

SIRE DMM INTERNATIONAL 54D

DMM BLACKBIRD 105A

JUSTAMERE 1728 MAXIMUM 430A

DAM JAYMARANDY GRACE JLMA 640D

YOUNG DALE GRACE 169B

640D went on to produce herd bull after herd bull finding favor in purebred programs. International, obviously carried on with his winning ways with several visits to the Farmfair and CWA Supremes, ultimately winning both and solidifying his place as an industry great. Beyond their individual successes, their dams both continued with theirs, too numerous for this list. True to form, International went on to become a highly successful breeding bull with Grace 640D offspring blazing their own trails of class and division winning. The proof of how successful this flush can be, is presently at the side of Grace 640D and he is a juggernaut. We at Jaymarandy Livestock are honored to participate in this prestigious sale with this great Canadian combination.

donated by

Jaymarandy Livestock • jaymarandylivestock.com
Mark Angus 204-281-5099 • jaymarandy@gmail.com

LOT EASTONDALE *Magnolia* 91'15 X MERIT *Intent* 37H

1 PACKAGE OF
3 EMBRYOS

7L

1881582 VK 91C Mar. 5, 2015 | 2161601 TJL 37H Feb. 6, 2020



| | | | | | |
|-----------|--------|-------|--------|---------|-------|
| SIRE EPDS | BW 5.1 | WW 70 | YW 100 | MILK 26 | CEM 7 |
| DAM EPDS | BW 3.5 | WW 45 | YW 80 | MILK 33 | CEM 2 |

GDAR INSIGHT 7201

SIRE MERIT INTENT 37H

MERIT FLORA 6078D

CROWFOOT EQUATION 5793R

DAM EASTONDALE MAGNOLIA 91'15

BAR-E-L MAGNOLIA 15T

We feel very confident this mating will result in an excellent breeding piece, combining both power and performance but still carrying great maternal strengths in both sire and donor dam of these embryos and the resulting progeny! We would be happy to answer any questions about the donor dam of these embryos.

donated by

Eastondale Angus—Dale, Shelly & Erika Easton • www.eastondaleangus.com
Dale 306-577-7456 • eastondale.angus@sasktel.net

LOT

BROOKING *Rose 7021 X S A V America 8018*

1 PACKAGE OF
2 EMBRYOS

8L

1974449 JSTN 21E Jan 9, 2017 | 2161873 IMP 8018F Jan 31, 2018



| | | | | | |
|------------------|---------------|--------------|---------------|----------------|---------------|
| SIRE EPDS | BW 4.9 | WW 79 | YW 133 | MILK 22 | CEM -4 |
| DAM EPDS | BW 1.1 | WW 65 | YW 117 | MILK 29 | CEM 8 |

S A V PRESIDENT 6847

SIRE S A V AMERICA 8018

S A V MADAME PRIDE 0075

S A V PEDIGREE 4834

DAM BROOKING ROSE 7021

E A ROSE 918

donated by

Brooding Rose 7021 is an own daughter of the famed EA ROSE 918, she is beautifully made with dimension, power and presence. She is flawless in her phenotype, beautifully fronted, has a long level hip and sports a beautiful udder. We have retained a few daughters and they are exceptional in their makeup and are excelling in the herd. Her mating to America will blend perfectly with her power, mass and angularity to create high quality offspring that will be maternal masterpieces.

KCH Cattle Co. • Find them on Facebook

Ken and Kerri Hinsburg 431-541-3205 • kchchar@gmail.com

LOT

LINZ *Lady Blaster 453-9202 X ELLINGSON Three Rivers 8062*

1 PACKAGE OF
2 EMBRYOS

9L

2196819 IMP 9202G Jan 24, 2019 | 2219702 IMP 8062F Feb 20, 2018



| | | | | | |
|------------------|---------------|--------------|---------------|----------------|---------------|
| SIRE EPDS | BW 6.3 | WW 98 | YW 176 | MILK 20 | CEM 7 |
| DAM EPDS | BW 2.9 | WW 85 | YW 147 | MILK 35 | CEM 10 |

ELLINGSON HOMESTEAD 6030

SIRE ELLINGSON THREE RIVERS 8062

EA EMBLYNETTE 6279

BRUNS BLASTER

DAM LINZ LADY BLASTER 453-9202

RB LADY DENVER 167-453

donated by

9202 is stacked pedigree wise and backed by excellent EPD's. Beautiful in type and kind with immaculate udder structure. Ellingson Three Rivers brings shear power and the reports on his progeny continue to be outstanding.

Stored at Bow Valley Genetics.

Glasman Farms Ltd. • glasmanfarms.com

Matthew and Leanne Glasman 204-773-6055 • mlg@glasmanfarms.com

LOT CUDLOBE *Erica* 14D X CHERRY CRK *Blue Collar* G275

1 PACKAGE OF
2 EMBRYOS

10L

1942121 UF 14D Jan 7, 2016 | 2406164 IMP 0275G Sept 4, 2019



UF 14D AND GOODNEWS HEIFER CALF



| | | | | | |
|-----------|---------|-------|--------|---------|--------|
| SIRE EPDS | BW -1.1 | WW 82 | YW 148 | MILK 17 | CEM 15 |
| DAM EPDS | BW 2.6 | WW 62 | YW 120 | MILK 30 | CEM 6 |

TEHAMA PATRIARCH F028

SIRE CHERRY CRK BLUE COLLAR G275

CHERRY CRK ENVITA B211 S

R B TOUR OF DUTY 177

DAM CUDLOBE ERICA 14D

CUDLOBE ERICA 96W

donated by

This combination of Cudlobe W Erica 14D and Cherry Crk Blue Collar G275 checks all the boxes for any Angus breeder. Functional, maternal, carcass and performance traits are all highlights in this mating. A Tour of Duty daughter, Erica 14D is a long bodied, powerful cow, with exceptional feet and leg structure. She is a Premier Dam in the Canadian Angus herdbook. Her mother's sire, Cudlobe In Focus 5S, is a Canadian Elite Sire and an American Angus Pathfinder Sire. Her granddam is also an Elite Dam in the Canadian Herdbook. Blue Collar comes with Calving ease, performance and altitude adaptability in a powerfully constructed package, his sons have been popular and in high demand.

Cudlobe Angus West • www.cudlobeangus.com

Mat Bolduc 403-625-1113 and David Bolduc 403-625-0499 • cattle@cudlobe.ca

LOT RED BRYLOR *Lady Trooper* 2E X BERWALD *Completely* 2056

1 PACKAGE OF
3 EMBRYOS

11L

2012156 LMP 2E Feb 1, 2017 | 2390326 IMP 2056K Jan 29, 2022



2025 marks 70 years that the McRae family of Mar Mac Farms have been involved as breeders of Angus cattle in Canada. This 5th generation family farm has bred Red Angus cattle since 1983 - 42 years. Blair and Lois McRae and family have been very active in the Angus breed, serving on the Manitoba and Canadian Angus Boards.

| | | | | | |
|-----------|--------|-------|--------|---------|-------|
| SIRE EPDS | BW | WW | YW | MILK | CEM |
| DAM EPDS | BW 5.8 | WW 72 | YW 126 | MILK 28 | CEM 8 |

RED KJL/CLZB COMPLETE 7000E

SIRE RED BERWALD COMPLETELY 2056

RED BERWALD STONY 0001

RED FINE LINE MULBERRY 26P

DAM RED BRYLOR LADY TROOPER 2E

RED MAR MAC LADY TROOPER 114Z

donated by

Lady Trooper 2E is an Elite Dam in Canadian Angus since 2023 with four calves with an average ratio of 113. A female that adds pounds and performance to her calf crop being in the 1st percentile for weaning weight and yearling weight. Her dam, Red Mar Mac Lady Trooper was the CAA Red Angus Show Female of the year in 2013. This is a proven producer who never lets us down. The sire of the embryos is the exciting new sire Berwald Completely who was the \$35,000 US Complete son who adds calving ease, performance and eye appeal to his offspring. His dam is a donor female who is one of Pie Quarterback's finest daughters. His calves are just starting to come in Canada and look tremendous. An exciting mating for the Red Angus industry. Embryos qualify for Canada, U.S. and Australia.

Mar Mac Farms— marmacfarms.net

Blair, Lois and Melissa McRae 204-728-3058 cell 204-573-5192 • marmacfarms1@gmail.com

LOT

RED ACC Tibbie 13B X RED NCJ Coming in Hot 24E

1 PACKAGE OF 5 EMBRYOS

12L

1803809 BIA 13B Feb 4, 2014 | 1987684 XDS 24E Jan 31, 2017



CONSISTENCY

FULL SIBLINGS

| | | | | | |
|-----------|--------|-------|--------|---------|--------|
| SIRE EPDS | BW 2.5 | WW 60 | YW 106 | MILK 28 | CEM 9 |
| DAM EPDS | BW 2.1 | WW 30 | YW 69 | MILK 33 | CEM -1 |

RRA AVIATOR 507

SIRE RED NCJ COMING IN HOT 24E
RED NCJ MINERVA 35C

ANDERSON'S NEXT GENERATION 20U

DAM RED ACC TIBBIE 13B

RED ANDERSON'S REVA 41T

We are proud to support the Canadian Angus Foundation this year with exciting frozen genetics. Red ACC Tibbie 13B is a cornerstone female of our program. She is extremely fertile, efficient and above all dominant in the consistency of her matings. Over the years we have flushed her to several bulls and she has cranked out winners from all of them. We have a file folder going with over 30 images of sale bulls she has raised. In total she has registered 61 progeny and we have sold very few of the daughters. This particular flush resulted in 42 number one eggs so we are still sitting on a very healthy inventory of them. We have several four-year-old daughters raising calves that would be full siblings to this offering. Watch our Facebook page carefully leading up to the sale and we will feature them once we get them on green grass. Stored at JMS Genetics Winnipeg.

donated by

Anderson Cattle Co. – andersoncattle.ca

Austen Anderson 204-281-3560 • austen@andersoncattle.ca



25th Annual Canadian Junior Angus SHOWDOWN 2025
Stettler, AB
MOVE IN BEGINS
JULY 23 AT 1 PM

The Canadian Angus Foundation will provide travel and trucking bursaries to attend Showdown as well as significant cash prizes and scholarships for the Aggregate Winners. There will also be three draws made for vouchers to purchase Angus females—one at \$3,000 and two at \$2,000. All exhibitors will automatically be entered to win!

Visit the Canadian Angus Foundation website at www.cdnangus.ca/foundation for more information and to apply for the bursaries.

Morgan MacIntyre
President: 613-720-6684
Lexi Dietrich 780-781-6695
and Thomas Wildman 780-305-1826
Belinda Wagner • Coordinator
306-537-1518 or bwagner@cdnangus.ca

For up-to-date Showdown information or to enter online, please visit www.cdnangus.ca/canadian-junior-angus/showdown

Thursday, July 24, 2025
11 am • Move in complete
• CJA Annual General Meeting & Orientation
12 noon • Lunch
12:30 pm • Judging (individual competition – written reasons)
1:30 pm • Team Grooming
5:30 pm • Supper & Extravaganza

Friday, July 25, 2025
8:30 am • Group Photo
9:00 am • Showmanship
9:00 am–1:00 pm • Print Marketing
12 noon • Public Speaking
1:00–4:00 pm • Sales Talk
2:00 pm • Team Judging (must qualify from individual competition)
6:00 pm • Cook-off & BBQ

Saturday, July 26, 2025
9:00 am • Heifers of Distinction Jackpot
10:00 am • Conformation Classes
5:00 pm • Banquet, Awards Presentations, Auction & Dance

LOT

RED WILBAR *Beretta* 859M

1 PACKAGE OF
3 STRAWS

13L

2377513 WJD 859M Jan 31, 2024



| | | | | | |
|------|--------|-------|--------|---------|-------|
| EPDS | BW 1.4 | WW 59 | YW 109 | MILK 25 | CEM 6 |
|------|--------|-------|--------|---------|-------|

RED NCJ COMING IN HOT 24E

SIRE RED WILBAR HIGHLIGHT 624H
RED WILBAR DOLL 776C

RED TWIN HERITAGE MOTIVATE 57E

DAM RED WILBAR REBECCA 910J
RED WILBAR REBECCA 834Z

donated by

Beretta is the bull the entire cattle world has heard about. He was the \$225,000 high seller from the record breaking Wilbar Cattle Co. sale this spring. Noted by many in the cattle industry as the highest quality bull to hear the auctioneers voice all spring, Beretta literally covers all the bases in the Red Angus sector. Most importantly amongst all his traits is the foot he carries, and that is reflective of his pedigree, as his mother sports as good of feet as any roaming specimen. With his impressive 113 weaning index and phenomenal haircoat, Beretta is the bull that takes you to the next level. Premium cow family, gorgeous mother, huge bodied and travels like a cat... make Beretta your go-to for embryo transfers or for breeding the very top cow in your herd. An influencer sure to be heard of for many years to come, take hold of this chance to use the talk of the industry in your herd.

Stored at Alta Genetics.

Scott Stock Farm— scottstockfarm.com

Jonathan Scott 403-333-1790 Camille Scott 403-369-1791 • scottstockfarm@gmail.com

LOT

RED SVR *Pistol Pete* 4M

1 PACKAGE OF
3 STRAWS

14L

2380436 SVR 4M Jan. 24, 2024



| | | | | | |
|------|--------|-------|--------|---------|-------|
| EPDS | BW 4.1 | WW 78 | YW 136 | MILK 30 | CEM 4 |
|------|--------|-------|--------|---------|-------|

BLACK WHEEL DRACARYS 86G

SIRE RED ALLISON CLASH 13K
RED ALLISON SPRING ROSE 51G

RED SVR KODIAK 213Z

DAM RED SVR RUBY 170D
RED SVR RUBY 144X

donated by

Only in a sale like this would we offer up semen on one of our exclusive sires that we purchased this spring. The \$90,000 lead-off and high selling bull from the South View Ranch's 25th Annual Bull Sale, Pistol Pete 4M is full of red meat and muscle while still maintaining great eye appeal in a sound structured package. This guy is powerful and stout from any angle you view him, stands on a big square foot and is that ideal dark red color. His actual data is impressive with a great spread from birth to yearling and big scrotal. He was exhibited alongside his

incredible 9-year-old dam where they were selected Reserve Champion Female at Agribition and Champion Senior Female at FarmFair. It is easy to see why the Kaufmann family considers Red SVR Pistol Pete 4M the best bull to own the SVR prefix and call Ceylon home. An incredible bull backed up by an impressive cow that we think has a big future ahead of him!

Stored at BoviGen.

Bohrson Marketing/Canadian Sires • bohrson.com

Scott Bohrson 403-370-3010 • scott@bohrson.com

LOT

1 PACKAGE OF 5 STRAWS

15L

RED SIX MILE *Showman* 87L

2312538 SIXM 87L Feb. 2, 2023



| | | | | | |
|------|---------|-------|-------|---------|-------|
| EPDS | BW -0.7 | WW 31 | YW 54 | MILK 24 | CEM 9 |
|------|---------|-------|-------|---------|-------|

SCHIEFELBEIN SHOWMAN 338
SIRE SIX MILE SHOWMAN 580H
 RED BAR-E-L FRADO 209U
 RED SIX MILE GAME FACE 164Y
DAM RED SIX MILE GOLDIE 104E
 RED SIX MILE GOLDIE 598C

donated by

Showman 87L is the first red hided son of the popular Schiefelbein Showman 338. Showman 87L was crowned Reserve Champion Red Angus Bull at Agribition 2024 in his only outing of the year. He is a dark red, calving ease option with added muscle shape and maternal worth. His first calves are on the ground now and are impressing us already. This is the first semen to be available on the open market on this herd sire. Only a select few packages of semen were sold earlier this spring.

Stored at Alta Genetics. Canada and USA Qualified.

Six Mile Ranch— sixmileredangus.com

Clayton Gibson 306-642-8013 Tyson Hertz 403-376-7284 • sixmile@sasktel.net

LOT

1 PACKAGE OF 5 STRAWS

16L

RED U2Q *El Scorcho* 547J

2239222 CUA 547J Feb 27, 2021



El Scorcho was a past sale season highlight and favorite amongst visitors with a royal, beyond proven pedigree. He has grown into a front pasture herd sire with two

| | | | | | |
|------|--------|-------|-------|---------|-------|
| EPDS | BW 1.2 | WW 49 | YW 87 | MILK 23 | CEM 1 |
|------|--------|-------|-------|---------|-------|

RED MINBURN COPENHAGEN 3Y
SIRE RED U2 SHOWDOWN 545E
 RED U-2 MS DYNAMO 200B
 RED U-2 DYNAMO 7021T
DAM RED U-2 ENVIOUS 147X
 RED U-2 ENVIOUS 216M

donated by

very impressive calf crops here. Sound from the ground up like his full brother Estranged 83G. We were so impressed with both the Estranged bulls and females we decided to double down! Both bulls continue to walk at the ranch. Their dam, Envious 147X, is the dam of countless breed leading herd bulls including the \$76,000 Renown 193C, who has written his own history in the Red Angus industry. El Scorcho is a legendary breeding bull that fulfills all the parameters of a maternally stacked herd sire. The young females have confirmed our confidence in Scorcho as we will continue to move forward with this impressive herd sire.

U2 Quality Seedstock— u2qualityseedstock.ca

Cole Unger 587-370-3700 • Cunger93@gmail.com

LOT

RED TOWAW *McGregor 601J*

1 PACKAGE OF
5 STRAWS

17L

2220519 TRW 601J Feb 8, 2021



McGregor 601J is a dark red, long bodied, stout made rascal with plenty of growth that is put together about as correctly as you can make one. After a great fall run in Western Canada, he was named the CAA 2023 Red Angus Show Bull of the Year. He was Champion Bull at Olds, Reserve Champion at Lloydminster and Reserve Senior Bull at Farmfair, even though he really didn't act like a show bull. Every time he hit the ring, he would cock his head sideways and show all the rest of the bulls how tough and masculine he was. He is an ET combination of a tremendous Red Towaw Indeed 104H daughter and the great breeding Contender bull from SSS. His full sister was a \$17,000 heifer calf in the 2021 Red Roundup Sale. Limited semen sold for upwards of \$600 per straw in the fall of 2023. Canada, USA, Australia qualified semen FOB from Alta Genetics, Alberta or World West Sires, Montana. This bull is now deceased so semen is limited.

| | | | | | |
|------|--------|-------|-------|---------|-------|
| EPDS | BW 2.4 | WW 48 | YW 78 | MILK 25 | CEM 8 |
|------|--------|-------|-------|---------|-------|

RED SSS SOLUTION 329Z

SIRE RED SSS CONTENDER 121B

RED SSS DYNA 688X

RED TOWAW INDEED 104H

DAM RED TOWAW COPPER 27W

RED ANGEL COPPER 5R

donated by

Towaw Cattle Co., Triple L Angus, Piro Red Angus and Wright Livestock

Kirk Wildman 780-305-1661 • towawcattle@gmail.com and Randy Tetzlaff 306-231-6969 • tetz@sasktel.net

LOT

RED U2Q *Entourage 282B*

1 PACKAGE OF
5 STRAWS

18F



1795500 DUA 282B Jan 30, 2014



A true breed leading legacy sire who was still breeding cows last year at age 10! His sons continue to top sales and daughters are some of many North American herds front pasture favourites. 282B checks all the boxes for longevity, udder structure, added bone, depth of heel and fertility. The \$58,000 sale feature from 2015 is a full brother to Red U2 Reckoning 149A and is backed by Anexa 271Y.

| | | | | | |
|------|--------|-------|-------|---------|-------|
| EPDS | BW 3.9 | WW 38 | YW 77 | MILK 31 | CEM 4 |
|------|--------|-------|-------|---------|-------|

RED BRYLOR WEST JET 69W

SIRE RED U-2 RECON 192Y

RED U-2 LARKABA 8133U

RED HOWE MAGNUM 169W

DAM RED U-2 ANEXA 271Y

RED U-2 ANEXA 333N

donated by

U2 Quality Seedstock— u2qualityseedstock.ca

Cole Unger 587-370-3700 • Cunger93@gmail.com

LOT

19F



Here is a collection of some of the popular and feature Red bulls that were utilized in the famous Soo Line program, including the time tested Norseman King, Wild Card and a direct son, Red Soo Line Momentum as well as the high selling Ribeye 308U.



A-5 STRAWS RED 5L Norseman King 2291

RED VGW ACE 613 1234936 IMP 2291L Feb. 9, 2001

SIRE RED VGW KING OF THE WEST
RED VGW MT TABITHA 9633

376 P J M 141

DAM RED NORSEMAN 1312 PJM
P J M POWERPOINT 2009

| | | | | | |
|------|--------|-------|-------|---------|-------|
| EPDS | BW 1.9 | WW 35 | YW 65 | MILK 25 | CEM 1 |
|------|--------|-------|-------|---------|-------|



B-3 STRAWS RED BCAR Wild Card

WINDY WILLOWS RANCHER 62H 1216235 CSG 65N Apr. 12, 2003

SIRE BCAR RANCHER 8'00
BREED CREEK ERICA 5F 3'98

BREED CREEK ATLAS 2E

DAM BREED CREEK PRIDE 33F 21'98
WIWA CREEK PRIDE 31Z 33'96

| | | | | | |
|------|--------|-------|-------|---------|-------|
| EPDS | BW 4.4 | WW 37 | YW 70 | MILK 23 | CEM 7 |
|------|--------|-------|-------|---------|-------|



C&D-5 STRAWS EACH RED Cockburn Ribeye 308U

RED TER-RON DIGGER 11L 1481951 CWJ 308U Jan. 25, 2008

SIRE RED BAR-E-L RIBEYE 103R
RED BAR-E-L MARCIE 5DN

RED TER-RON TORNADO 157M

DAM RED WILBAR CORA 443P
RED HEAD CORA 159L

| | | | | | |
|------|--------|-------|-------|---------|-------|
| EPDS | BW 4.4 | WW 52 | YW 86 | MILK 30 | CEM 8 |
|------|--------|-------|-------|---------|-------|



E-3 STRAWS RED GEIS Knight Hawk 14'02

RED YY RED KNIGHT 640F 1115960 GEIS 14M Jan. 20 2002

SIRE RED KBJ KNIGHT 17J
KBJ ROUND LASSIE 18T

RED GARA HEAVENLY 65C

DAM RED GEIS SAMARIE 234'96
RED GEIS SAMARIE 151'92

| | | | | | |
|------|--------|-------|-------|---------|-------|
| EPDS | BW 3.9 | WW 48 | YW 86 | MILK 10 | CEM 9 |
|------|--------|-------|-------|---------|-------|



F-2 STRAWS RED SOO LINE Momentum 7051

BCAR RANCHER 8'00 1370389 SOO 51T Jan. 18, 2007

SIRE RED BCAR WILD CARD
BREED CREEK PRIDE 38F 21'98

RED CRESCENT CREEK FRCHIEF 75L

DAM RED SOO LINE BANE BERRY 5238
RED SOO MS BANE BERRY 3193

| | | | | | |
|------|--------|-------|-------|---------|-------|
| EPDS | BW 4.6 | WW 39 | YW 61 | MILK 25 | CEM 4 |
|------|--------|-------|-------|---------|-------|

donated by

Soo Line Cattle Co.

Roger Hardy 480-859-0501 • rogerhardy1@hotmail.com

LOT

1 PACKAGE OF
4 STRAWS

20F



BUF CRK *Hobo* 1961

706951 IMP 1961Y Apr. 01, 1989

RED BJR HOB0 800

SIRE RED BUF CRK HOB0 1413

BJR LANA 3140-302

RED BUF CRK TOMAHAWK 529

DAM RED BUF CR CARRIE VC1174

RED BFLO CRK CARIE VC473

Hobo 1961 was a legendary calving ease and maternal sire that was a high-volume sales leader for ABS throughout the 90s. His semen is very rare and hard to find these days as he sired 1,968 calves in Canada and exponentially more in the United States. He is a designated Elite Sire and is in the top 40% for combined index—quite a feat for a bull born in 1989.

EPDS

BW -2.1

WW 20

YW 38

MILK 18

CEM 10

donated by

Canadian Angus Foundation • www.cdnangus.ca/foundation
306-537-1518 • bwagner@cdnangus.ca

LOT

1 PACKAGE OF
5 STRAWS

21L

LT *Marquee* 169L

2335463 LTR 169L Mar. 29, 2023



FLORA 6078D - PATERNAL GRANDDAM



DUCHESS 76G - MATERNAL GRANDDAM



INVESTMENT 1054J - SIRE

Stemming from the legendary Bar-E-L program and harnessed with the power of the Duchess cow family who now reside at Murray Ranches that yield productive, efficient, low input cattle with eye appeal and natural stoutness. Sired by the highly sought after Merit Investment, whose offspring consistently rise to the top for structural correctness, udder quality and foot quality. Marquee is a bull right for the times. His hind leg, hip, presence, stature and ability to move have captivated cattlemen who have seen him.

EPDS

BW 4.5

WW 72

YW 121

MILK 22

CEM 4

U-2 COALITION 206C

SIRE MERIT INVESTMENT 1054J

MERIT FLORA 6078D

PEAK DOT TOPSOIL 355G

DAM BAR-E-L DUCHESS 169J

BAR-E-L DUCHESS 76G

donated by

Bar-E-L Angus/Grand River Angus/Murray Ranches
Dave Longshore 403-740-6788 Suntana Murray 403-501-8889



Thank you to Western Litho Printers for partnering
with us to produce our Legacy Sale catalogue.

Contact them at 306-525-8796 for 'Seriously Smart Printing'.

www.westernlitho.ca

LOT

BROOKING TW 4022

2385159 JSTN 22M Jan. 8, 2024

1 PACKAGE
OF 3 STRAWS

22L



A rare opportunity to get access to one of Canadian Sires 2025 exclusive sires! One of the most esteemed bulls to emerge from the great Brooking operation.

His popularity continued to grow after being placed in the Top Ten at Agribition's CN Beef Supreme, making him the only Angus bull calf to ever achieve this accolade. TW 4022 is hard to fault in his overall design; he combines power, rib, dimension, muscle and mass in an athletic moving, good looking package. The maternal lineage behind him is not only visually stunning but also highly productive. The progeny from the Countess cow family are consistently in demand for their blend of power and phenotype. The dam Countess 9026 and grandam Countess 7077 were one of the finest pairs showcased in recent years winning Supreme Champion Female at both FarmFair and Agribition. The combination of phenotype, cow family and outcross sire made Brooking TW 4022 one of the most exciting sire prospects of the 2025 sale season where he commanded \$270,000. Get in early on Brooking TW 4022 as he will soon be a household name! Stored at Alta Genetics.

| | | | | | |
|------|--------|-------|--------|---------|--------|
| EPDS | BW 4.1 | WW 76 | YW 126 | MILK 18 | CEM -2 |
|------|--------|-------|--------|---------|--------|

DON APARICIO SERRUCHO 57 MAXI

SIRE HUMMEL SOUTH AMERICA
FONTANA RUBETTE 7567-T/E

BROOKING FIREBRAND 6068

DAM BROOKING DUSTY'S COUNTESS 9026
BROOKING COUNTESS 7077

donated by

Bohrson Marketing/Canadian Sires • bohrson.com
Scott Bohrson 403-370-3010 • scott@bohrson.com

LOT

KT Kelowna 4136

2404657 KTC 4136M Jan. 10, 2024

1 PACKAGES
OF 5 STRAWS

23L



| | | | | | |
|------|--------|-------|--------|---------|---------|
| EPDS | BW 1.5 | WW 53 | YW 101 | MILK 28 | CEM 8.5 |
|------|--------|-------|--------|---------|---------|

PM EXECUTIVE DECISION 5'17

SIRE W SUNRISE EXECUTIVE 4J
BROOKING QUEEN 5067

S A V RAINFALL 6846

DAM S A V MADAME PRIDE 8126
S A V MADAME PRIDE 4514

donated by

KT Kelowna 4136 was the high seller at KT Ranches this spring at \$105,000. His dam S A V Madame Pride 8126 is a favourite donor at KT and is angular, big ribbed and has a perfect udder. We purchased her natural calf last year, which we also donated semen on in this sale in 2024.

Lewis Farms & Rocking Heart Range • www.lewisfarms.ca
Kyle 780-220-9188 • Kyle@lewisfarms.ca

LOT

SHAW Caldwell 11432

2 PACKAGES
OF 5 STRAWS

24L A & B

2307226 IMP 11432J Aug. 22, 2021



Shaw Caldwell 11432 is one of the exciting young sires in the breed. Purchased as the \$59,000 High Seller in the 2023 Shaw Bull Sale in Idaho, he is a son of the popular Sitz Resilient 10208, while his dam is a full sibling to Tehama Tahoe B767. Caldwell combines top end calving ease with performance, scrotal, foot quality and an impressive phenotype. The first group of Caldwell progeny sold this spring, with 32 sons averaging in excess of \$17,600 and being extremely popular with purebred and commercial cattleman alike.

| | | | | | |
|------|-------|-------|--------|---------|-------|
| EPDS | BW -2 | WW 72 | YW 129 | MILK 41 | CEM 9 |
|------|-------|-------|--------|---------|-------|

SITZ STELLAR 726D

SIRE SITZ RESILIENT 10208

SITZ MISS BURGESS 1856

TEHAMA UPWARD Y238

DAM TEHAMA MARY BLACKBIRD D094

TEHAMA MARY BLACKBIRD Y684



**MILWAUKEE 4132,
\$40,000 SECOND HIGH
SELLING CALDWELL SON
TO CMT FARMS**



**MARKSMAN 4063,
\$60,000 HIGH SELLING
CALDWELL SON TO
RICHMOND RANCH**

donated by

Belvin Angus • belvinangus.com • belvinangus@xplornet.com

Gavin Hamilton 403-556-5246 Colton Hamilton 403-507-5416 Brendyn Elliot 250-449-5071

LOT

SAV Theory 2914

1 PACKAGE OF
5 STRAWS

25L

2310719 IMP 2914J Dec. 25, 2021



**BROOKING THEORY 4093
\$50,000 FEATURE SON
TO HEINZ CATTLE CO.**

| | | | | | |
|------|--------|-------|--------|---------|-------|
| EPDS | BW 2.7 | WW 77 | YW 138 | MILK 22 | CEM 3 |
|------|--------|-------|--------|---------|-------|

S A V RESOURCE 1441

SIRE S A V TERRITORY 7225

S A V EMBLYNETTE 3293

S A V 707 RITO 9969

DAM S A V EMBLYNETTE 2369

S A V EMBLYNETTE 7566

SAV Theory 2914 is a bull that you fall in love with when you first see him. He is a powerfully constructed, big hipped, muscular, masculine, long bodied and has an ideal Angus head. He stands on really good feet, has a big scrotal and moves with authority. His famous dam, SAV Emblynette 2369, is an extremely impressive female that combines phenotype, performance and production. She has generated over \$4.3 million in progeny sales and has been a factory of herd sires. Her daughters in production are mouth-watering! Flush mate sisters to Theory in production in particular are incredible females that have awesome udders and ideal phenotype. His first son to sell at Brooking was a fan favourite selling for \$50,000 to Heinz Cattle Co. Located at Alta Genetics - Rocky View County, AB

donated by

Brooking Angus Ranch • brookingangusranch.com

brookingangus@outlook.com • Justin Morrison 306-536-4590

LOT

BAR-E-L *Natural Law* 52Y

1 PACKAGE
OF 2 STRAWS

26L

1629829 DBR 52Y Feb.18, 2011



| | | | | | |
|------|--------|-------|--------|---------|-------|
| EPDS | BW 3.1 | WW 55 | YW 106 | MILK 22 | CEM 7 |
|------|--------|-------|--------|---------|-------|

G A R GRID MAKER

SIRE S A V BISMARCK 5682

S A V ABIGALE 0451

BAR-E-L MCC 365 ICON 20H

DAM BAR-E-L MAGNOLIA 146K

DOUBLE FOUR DUCHESS 12G

donated by

The semen inventory on Natural Law is getting very low. I have said no to many requests over the past couple of years, both in Canada and the U.S. However, when it comes to supporting our youth, I simply can't say no. The work the Foundation does is vital to our future as Angus breeders.

Natural Law needs no introduction—he has proven himself as a top sire in both the show ring and the real world of production. Semen is stored at Bow Valley and Alta, and also in Billings for our American friends.

Poplar Meadows Angus • poplarmeadowsangus.ca
Tanya Belsham 250-845-8474 • tdbelsham@gmail.com

LOT

GUMBO GULCH *Creed* 94S

1 PACKAGE
OF 3 STRAWS

27L

1328102 JN1 94S Feb. 13, 2006



CREED SON
DMM CREED 75W



CREED DAUGHTER
DMM BLACKBIRD 105A

CONNEALY FOREFRONT

SIRE TC FREEDOM 104

T C RUBY 9095

BAR J P LEGEND 70K

DAM CASSIE OF GUMBO GULCH 58M

CASSIE OF GUMBO GULCH 43F

donated by

Gumbo Gulch Creed 94S semen is rarely available to purchase as we are in short supply. Creed is a bull that is timeless. Excellent feet, muscle, performance and structure just never go out of style. Creed is able to put as many great bulls on the ground as females. He is the common denominator in 13 Supreme Champions for us between Farmfair International and Agribition. Help yourself to some rare semen on a bull that can make a great one while supporting a great cause.

Miller Wilson Angus • www.millerwilsonangus.ca
Lee 780-608-0257 • Dawn 780-781-9733 • dmm.mwangus@gmail.com

LOT

ELLINGSON *Hi-Range*

2 PACKAGES
OF 5 STRAWS

28L A & B

2251702 IMP 1356J March 12, 2021



2025-high selling bull: HF Hi-End 9M, purchased by Ter-Ron Farms, and Bar-E-L Angus for \$140,000.



2025-high selling female: HF Rosebud 5M, purchased by Grand River Angus, MI for \$60,000.



2024-high selling bull: HF Hi-Country 7L, purchased by Strongbow Farms, River Valley Cattle, Peak Dot Ranch and Hamilton Farms for \$185,000.



2024-high selling female: HF Mistress 192L, purchased by Hilltop Hay and Livestock, CO. for \$34,000.

| | | | | | |
|------|---------|-------|--------|---------|--------|
| EPDS | BW -1.5 | WW 72 | YW 123 | MILK 25 | CEM 15 |
|------|---------|-------|--------|---------|--------|

BASIN RAINMAKER 4404

SIRE ELLINGSON RANGELAND

EA EMBLYNETTE 7009

ELLINGSON HOMEGROWN 6035

DAM EA EMBLYNETTE 9473

EA EMBLYNETTE 7211

A true calving ease specialist with growth and power to boot! Hi-Range will be a game changer for structure, foot quality and mobility. His outcross pedigree offers mating flexibility for a large cross-section of the breed.

The bulls are solid and ultra thick, low BW and have the ability to pack on the pounds. The females are stunning, lots of middle, eye appeal and swagger that you can't deny.

donated by

Hamilton Farms • hamiltonfarms.ca • angus@hamiltonfarms.ca
Rob 403-540-3186 Gail 403-540-8291 Joel 403-808-6341

LOT

BAR-E-L *Stamina* 11F

1 PACKAGE
OF 5 STRAW

29L

2033406 YHB 11F Jan. 29, 2018



| | | | | | |
|------|--------|-------|--------|---------|-------|
| EPDS | BW 1.6 | WW 78 | YW 121 | MILK 21 | CEM 3 |
|------|--------|-------|--------|---------|-------|

CONNELLY EARNAN 076E

SIRE BROOKING REAL ESTATE 6072

SOO LINE ROSE 1019

HF G-MAN 29B

DAM BAR-E-L MIA 100D

MIA OF RING CREEK 69Y

Stamina has cemented himself as an exceptional breeding bull. Not often is a sire able to have both sons and daughters that are extremely valuable, he has done that. With 300+ calves on the ground to date, we are confident in his ability to sire cattle that are sound, good footed, easy fleshing, but have enough performance. His daughters have udders that are a pasture calving dream, they are tight with a nice teat size. The birth weights are consistent and his calves have great hair. The center body mass in his offspring is unmatched from any sire we have used recently. The maternal strength is strong with the Beauty, Rose, and Echo cow families in the pedigree. He is still going strong at 7 years of age. There will never be a day when we decide that we have too many Stamina offspring in the herd. Stored at Alta Genetics. Canadian qualified.

donated by

Everblack Angus—The Gibson Family • Find them on Facebook
780-581-1159 • jordangibson@everblack.ca

LOT

PEAK DOT *Belfast* 2099H

2 PACKAGES
OF 5 STRAWS

30L A & B

2155332 PDAR 2099H Apr 3, 2020



This power bull has peaked several peoples' interest when they have seen him and his calves. He is a powerful Colossal son that offers calving ease with more frame and performance. His easy fleshing, fertile Element dam has an excellent udder and very good feet. His sons are very consistent in type with added length, body mass, muscle and nice looking heads. They were the lead off sire group in the 2024 Peak Dot Ranch Spring Sale and his daughters are among some of our favourites in the replacement pen. Belfast ranks in the very top 1% of the Angus breed for weaning weight, yearling weight, heifer pregnancy rate, and maternal calving ease EPDs. He also ranks right near the top of the breed for carcass weight EPD.

| | | | | | |
|------|--------|-------|-------|---------|-------|
| EPDS | BW 7.1 | WW 51 | YW 82 | MILK 25 | CEM 8 |
|------|--------|-------|-------|---------|-------|

LD CAPITALIST 316

SIRE MUSGRAVE 316 COLOSSAL 137
MUSGRAVE LADY BARBARA 545
4M ELEMENT 405

DAM PEAK DOT ANNIE K 2145E
ANNIE K OF PEAK DOT 1016X

Semen stored at Bovigen, Moose Jaw, SK.

donated by

Peak Dot Ranch • www.peakdotranch.com
306-266-4414 • peakdot@gmail.com

LOT

S A V *Sterling* 1766

2 PACKAGE
OF 5 STRAWS

31L A & B

2275480 IMP 1766J Feb. 15, 2021



Sterling is one of the most powerful and performance oriented sons of Stellar to date, he combines the foot quality of the Stellar pedigree with extra frame and dimension.

| | | | | | |
|------|--------|-------|--------|---------|-------|
| EPDS | BW 3.5 | WW 94 | YW 167 | MILK 12 | CEM 9 |
|------|--------|-------|--------|---------|-------|

MOHNEN SUBSTANTIAL 272

SIRE SITZ STELLAR 726D
SITZ PRIDE 200B
S A V GOVERNOR 6844

DAM S A V POLLY 9744
S A V Polly 7756

donated by

Elk Ridge Farms • Find them on Facebook
Wade Bartkiw 204-859-0279 wade@elkridgefarms.ca

LOT

32F



Here is a group of bulls that are female makers! VRD is recognized as a female producing machine and Alberda Traveler, Bush Grand Design and Duff New Attraction are proven producers. If you're looking to bring back some established maternal genetics here are bulls that can add value to any program.



A-1 STRAW *VERMILION Dateline 7078*

1018284 IMP 7078G Feb. 4, 1997

| | | | | | |
|------|--------|-------|--------|---------|--------|
| EPDS | BW 5.5 | WW 58 | YW 106 | MILK 20 | CEM 10 |
|------|--------|-------|--------|---------|--------|

D H D TRAVELER 6807

SIRE CONNEALY DATELINE

EILA EILA OF CONANGA

LEACHMAN RIGHT TIME

DAM VERMILION BLACKBIRD 5044

VERMILION BLACKBIRD 3525



B-5 STRAWS *ALBERDA Traveler 416*

876382 IMP 6446D Jan. 25, 1994

| | | | | | |
|------|--------|-------|-------|---------|----------|
| EPDS | BW 3.7 | WW 34 | YW 68 | MILK 25 | CEM -2.0 |
|------|--------|-------|-------|---------|----------|

Q A S TRAVELER 23-4

SIRE D H D TRAVELER 6807

BEMINDFUL MAID D H D 0807

V D A R NEW TREND 315

DAM ALBERDA QUEEN KIMBERLY 222

ALBERDA QUEEN KIMBERLY 169



C-1 STRAW *BUSHS Grand Design*

1112697 IMP 802K Feb. 20, 2000

| | | | | | |
|------|--------|-------|-------|---------|-------|
| EPDS | BW 1.8 | WW 46 | YW 69 | MILK 24 | CEM 4 |
|------|--------|-------|-------|---------|-------|

B/R NEW DESIGN 036

SIRE BON VIEW NEW DESIGN 1407

BON VIEW PRIDE 664

TC DIVIDEND 963

DAM BUSHS LADY DIVIDEND 872

B A 714 LADY 619



D-2 STRAW *DUFF New Attraction 6110*

1426175 IMP 6110S Mar. 2, 2006

| | | | | | |
|------|--------|-------|-------|---------|-------|
| EPDS | BW 4.5 | WW 35 | YW 65 | MILK 24 | CEM 0 |
|------|--------|-------|-------|---------|-------|

O C C DOCTOR 940D

SIRE O C C GENESIS 872G

BLACKBIRD OF R R 1204

O C C ANCHOR 771A

DAM O C C DIXIE ERICA 814G

O C C DIXIE ERICA 764C

donated by

DJ Cattle Co.

Dallas & Lynne Johnston 204-841-3880 • djcattleco@hotmail.com

LOT

33F



A unique offering of proven black sires that played a big role in writing a chapter of Angus history, the female maker himself, EXT, has 2500 registered progeny in the Canadian herdbook alone. Bando 5175 was also used extensively throughout leading herds across North America. KG Power Design is a proven calving ease grandson of New Design.

A&B

1 PACKAGE OF 5, 1 PACKAGE OF 4 STRAWS



N BAR *Emulation* EXT

849773 IMP 479U Feb. 1, 1986

| | | | | | |
|------|--------|-------|-------|---------|--------|
| EPDS | BW 1.4 | WW 55 | YW 69 | MILK 22 | CEM 12 |
|------|--------|-------|-------|---------|--------|

EMULATION 31

SIRE EMULATION N BAR 5522
ANKONY 8F78 LASS 8F275

EMULATION 31

DAM N BAR PRIMROSE 2424
PRIMROSE N BAR 9962

C&D

1 PACKAGE OF 5, 1 PACKAGE OF 4 STRAWS



K G *Power Design*

1196908 IMP 9743J Mar. 03, 1999

| | | | | | |
|------|---------|-------|-------|---------|--------|
| EPDS | BW -1.4 | WW 42 | YW 74 | MILK 30 | CEM 12 |
|------|---------|-------|-------|---------|--------|

B/R NEW DESIGN 036

SIRE D B NEW FLY DESIGN 730
D B MS FLYER 530

S A F POWER FIX

DAM POWER FIX K G 3
RAINMAKER KG2

**E
2 STRAWS**



SAF 598 *Bando* 5175

994198 IMP 5175E Mar. 11, 1995

| | | | | | |
|------|--------|-------|--------|---------|-------|
| EPDS | BW 4.8 | WW 56 | YW 101 | MILK 31 | CEM 8 |
|------|--------|-------|--------|---------|-------|

TEHAMA BANDO 155

SIRE BON VIEW BANDO 598
BON VIEW DORA 56

V D A R NEW TREND 315

DAM S A F ROYAL LASS 1002
S A F ROYAL LASS 6089

donated by

Soo Line Cattle Co.

Roger Hardy 480-859-0501 • rogerhardy1@hotmail.com

LOT

1 PACKAGE
OF 5 STRAWS

34F



BROOKING *Banknote* 4040

1776488 JSTN 40B Jan. 28, 2014



Brooking Banknote 4040 is a household name in the Angus breed, heavy muscled, deep ribbed, and great feet. Progeny are consistent, daughters fantastic in production!

Stored at Glasman Farms.

| | | | | | |
|------|---------|-------|--------|---------|--------|
| EPDS | BW -1.5 | WW 72 | YW 123 | MILK 25 | CEM 15 |
|------|---------|-------|--------|---------|--------|

CONNEALY CONSENSUS

SIRE CONNEALY EARNAN 076E

BRAZILA OF CONANGA 3991 839A

S A V FINAL ANSWER 0035

DAM E A ROSE 918

E A ROSE 738

donated by

Glasman Farms Ltd. • glasmanfarms.com

Matthew and Leanne Glasman 204-773-6055 • mlg@glasmanfarms.com

LOT

1 PACKAGE
OF 5 STRAWS

35F



HF *Alcatraz* 60F

2155332 HAMI 60F Jan 8, 2018



HF Alcatraz 60F is sound with a big foot, athletic, powerful body type, great hair, and pleasant, docile temperament. His progeny are born easy - heifer friendly, grow fast, and weigh up at weaning.

Stored at Glasman Farms.

| | | | | | |
|------|--------|-------|-------|---------|-------|
| EPDS | BW 0.6 | WW 51 | YW 99 | MILK 45 | CEM 5 |
|------|--------|-------|-------|---------|-------|

AVF BREAKOUT 5409

SIRE MAY-WAY BREAKOUT 1310

MAY-WAY LADY BANDO 086

HF TIGER 5T

DAM HF MAYFLOWER 191Z

HF MAYFLOWER 78P

donated by

Glasman Farms Ltd. • glasmanfarms.com

Matthew and Leanne Glasman 204-773-6055 • mlg@glasmanfarms.com

LOT

1 PACKAGE
OF 5 STRAWS

36F



DEER VALLEY Growth Fund

2077827 IMP 7112E Jan. 22, 2017



| | | | | | |
|------|--------|-------|--------|---------|--------|
| EPDS | BW 1.5 | WW 91 | YW 168 | MILK 26 | CEM 12 |
|------|--------|-------|--------|---------|--------|

BASIN PAYWEIGHT 006S

SIRE BASIN PAYWEIGHT 1682

21AR O LASS 7017

PLATTEMERE WEIGH UP K360

DAM DEER VALLEY RITA 36113

DEER VALLEY RITA 9457

donated by

Growth Fund has unparalleled customer satisfaction across every region and segment of the beef industry. He is best known for his ability to sire consistent quality regarding phenotype and genetic merit for almost any mating combination for both males and females. Over 2,000 daughters are in production and are consistently high-producing cows creating the next generation of elite Angus genetics.

Nolan Cattle Co. • Find them on Facebook

Cody Nolan 204-573-4006 Cam Claey's 204-526-7123 • nolancattleco@gmail.com

LOT

3 PACKAGES
OF 10 STRAWS

37F A, B & C



Pick of any bull from the 2025 ALTA GENETICS INVENTORY



CONNELLY PINNACLE



ELLINGSON LAKOTA



RED BIEBER PAYCHECK K104

donated by



Alta Genetics is generously offering three lots of 10 units each of any Alta bull that qualifies for Canada. You can choose from every Canadian qualified bull in Alta Genetics' inventory for a minimum 10 units each and a total of 30 units.

Alta Genetics • www.altagenetics.com
403-226-0666 • twhite@altagenetics.com

LOT

2 PACKAGES
OF 5 STRAWS

38F A & B



Pick of any bull from the
2025 SEMEX BEEF INVENTORY



ELLINGSON PROFOUND 8155



RED SIX MILE MOSSY OAK 175H



REDS REVOLUTION K248



SHAW CALDWELL 11432



You may choose from any bull in the 2025 Semex catalogue (subject to availability). You can choose from every Canadian qualified bull in Semex inventory for a minimum of 5 units and a total of 10 units including the bulls pictured here.

donated by

Semex • www.semex.com/beef
519-821-5060 • kwalker@semex.com

LOT

2 PACKAGES
OF 5 STRAWS

39F A & B



Pick of any bull from the
2025 GENEX BEEF INVENTORY



GENEX



GENEX



GENEX



GENEX



You may choose from any bull in the 2025 Genex catalogue (subject to availability). You can choose from every Canadian qualified bull in Genex inventory for a minimum of 5 units and a total of 10 units including the bulls pictured here. No Sexed Semen will qualify. Please contact Patty Lasby if you need more information.

donated by

Genex • www.genexcanada.ca
519-835-3982 • plasby@genex.coop

LOT

40F

\$1,000 CREDIT TOWARDS AN IVF CYCLE OR CONVENTIONAL FLUSH



The team at Bow Valley Genetics are strong supporters of our sector and continue to support our Foundation offering what are, to many of us, essential services as part of our seedstock operations. This embryo flushing service credit can be used for embryo services at the BVG location at Brooks, AB.



donated by

**Bow Valley Genetics Ltd. • bowvalleygenetics.com
587-887-1934 • office@bowvalleygenetics.com**

LOT

41F

\$1,000 SEMEN COLLECTION VOUCHER



For more than 50 years, Alta Genetics has offered custom collection, storage and global distribution. For Building the Legacy, they are generously providing a \$1,000 voucher toward any semen collection you require.



donated by

**Alta Genetics • www.altagenetics.com
403-226-0666 • twhite@altagenetics.com**

LOT

42F

FLUSH PACKAGE



Bova-Tech is offering one flush that includes all costs for set up, drugs for stimulating the donor, flushing of the donor and all freezing and related costs. This flush package does not include semen. Travel is the responsibility of the buyer if flushed on-farm, and if done at the facility near Cochrane, Alberta, board would be the responsibility of the buyer. Thanks to Bova-Tech for their support!



donated by

**Bova-Tech
403-332-1567 • info@bova-tech.com**

LOT



43F

\$1,000 SERVICE CREDIT

Davis-Rairdan Embryo Transplants implants an average of 2,000 embryos annually and operates a fully equipped mobile laboratory, providing on-farm service anywhere in Alberta, Saskatchewan and Manitoba. The winning bidder will receive a \$1,000 service credit.



donated by

**Davis-Rairdan Embryo Transplants Ltd. • www.davis-rairdan.com
403-946-4551 • embryos@davis-rairdan.com**

LOT



44F A & B

2—\$500 SERVICE CREDITS

Bovi-Gen is a new state-of-the-art bovine reproductive facility conveniently located just west of Moose Jaw, Saskatchewan on highway #1. Their facility is more than just the equipment: when you work with Bovi-Gen, you can trust a team of dedicated and knowledgeable professionals that are experienced, passionate and committed to providing your animals with exceptional care. Services Include: embryo IVF or conventional flushing, domestic semen production and export semen production.



donated by

**Bovigen
306-690-3243 • office@bovigen.net**

LOT

45L

\$1500 VOUCHER FOR MINERAL

Proudly Donating
\$1,500 of Bullseye Mineral Premix
 in support of the Building the Legacy Sale



We're honoured to work alongside producers in supporting healthy, productive animals, and are dedicated to providing reliable, high-quality nutrition solutions that help cattle operations thrive for years to come.

Tom McNeely
 Brand Manager / Co-Founder
(780) 679-7220
tomj.mcneely@bullseyefeeds.ca



donated by

**Bullseye • bullseyefeeds.ca
Tom McNeely 780-679-7220 • tomj.mcneely@bullseyefeeds.ca**

LOT



46F

ALLFLEX APR250 RFID READER

Allflex APR250 Handheld Readers are compact and easy to use rugged portable RFID scanning devices for reading livestock electronic identification (EID) tags. The APR250 offers excellent reading range for HDX and FDX-B, and transmission via Bluetooth or USB. The internal memory can store up to 100,000 ID numbers along with the additional information. The integrated Li-Ion battery lasts for many days of work and even in continuous read mode works for up to six hours. Online mode and connectivity with iPhone and Android apps allow bi-directional wireless data communication. Best of all, the reader is lightweight and ergonomically designed with a large, backlit, colour display that facilitates basic records management. The reading process is easily controlled, even in noisy environments, with the help of two LED indicators, a vibrating motor, and loud, operation-specific sounds.



donated by

**Allflex • www.allflex.global/na
Tara Velestuck 403-429-0526 • tara.velestuk@merck.com**

LOT

47L

\$1,000 SERVICE VOUCHER

DLMS/Cattlevids have been a long-time supporter of the Building the Legacy sale. This lot presents a great opportunity to get a head start on your sale planning for this fall or next spring with a \$1,000 service credit for use on any of the services offered by DLMS/Cattlevids. Plan your sale with the industry-leading DLMS sale broadcast or have Cattlevids capture your sale offering with video or pictures. When it comes to online exposure for your sale, DLMS and Cattlevids.ca have you covered. This credit is to be used by the end of the spring 2026 bull sale season.



donated by

**DLMS/CattleVids • www.dlms.ca
Mark Shologan 780-699-5082**

LOT



48F

\$750 SALE CREDIT IN 2025, OBI MANAGED

OBI has been a long-time supporter of the Legacy Sale, both as a donor and purchaser, along with assisting with marketing. This year they are once again offering a purchase credit for any OBI fully-managed sale. Credit must be used by December 31, 2025.



donated by

**OBI Livestock Ltd. • www.cattlemanagement.ca
Mark Holowaychuk 403-896-4990**

LOT

49F

\$500 VOUCHER FOR ULTRASOUND SERVICES



Windy Ridge Ultrasound provides both seedstock and feedlot ultrasound services to British Columbia, Alberta, Saskatchewan, and Manitoba. Seedstock/purebred ultrasound is performed in accordance with Ultrasound Guidelines Council certified field technicians

and analyzed by Centralized Ultrasound Processing labs. Feedlot ultrasound utilizes Cattle Performance Enhancement Company's management software developed at Kansas State University. In addition to ultrasound services, Windy Ridge Ultrasound is Canada's first and foremost dealer in SILENCER hydraulic cattle squeeze chutes. Windy Ridge is committed to providing all customers with the best quality service available and assistance in their livestock marketing and breeding decisions. Voucher to be used in 2025 and is for one farm visit only.



donated by

**Windy Ridge Ultrasound • www.cattleultrasound.ca
Rod Wendorff 403-330-3000 • cattleultrasound.rod@gmail.com**

LOT

50L

\$1000 SERVICE CREDIT



Update your marketing material with photos by Prairie Pistol Designs. Offering a \$1000 photography credit to be used towards capturing your cow herd this summer or photographing your fall sale cattle. Melissa has been photographing cattle and working in the livestock industry for over 15 years. The Junior Angus program was a big part of Melissa's life and she is honored to be able to offer this opportunity to support the program. Mileage 150 km from Brandon, Manitoba is included.

donated by

**Prairie Pistol Designs • prairiepistoldesigns.com
Melissa McRae 204-573-9903 • prairiepistoldesigns@gmail.com**

LOT

51L

CHOICE ON ONE DAY OF SERVICES



Book a day with Sarah Hasson for your choice of the following:
Sale Animal Photography/Videography - book Sarah to capture high quality catalogue photos and/or sale videos of your sale animals. Pasture Photos - book Sarah to help you update or create a library of your cowherd as well as loads of beautiful landscape and candid photos from around your ranch. Event Photography - Do you have a livestock show or branding coming up? Book Sarah to capture all of the memories from the day. Services are to be used by December 31, 2025. Travel costs may be additional, depending on location.

donated by

**Golden Thread Livestock Images • goldenthread.ca
Sarah Hasson 306-681-5340 • sarah@goldenthread.ca**



**Golden Thread
LIVESTOCK IMAGES**

LOT

52L

\$500 VOUCHER



At Gone West Media, we believe that every legacy deserves to be seen and shared. We're proud to donate a \$500 credit toward photography, videography, or graphic design services—crafted to help purebred breeders market their cattle with clarity and confidence. This donation supports the Canadian Angus Foundation's mission to invest in youth, education, and preserving the stories that built our industry, one generation at a time. To be used by the end of bull sale season 2026.

donated by

**Gone West Media • gonewestmedia.ca
Jill Renton 506-381-8019 • info@gonewestmedia.ca**

LOT

53L

FULL PAGE – FULL COLOR AD IN TODAY'S ANGUS ADVANTAGE



T Bar C Cattle Co. Ltd. proudly produces Today's Angus Advantage and work with some of the most progressive breeders in the industry. Published five times a year, the mandate of Today's Angus Advantage has always been the promotion and enhancement of all sectors of the Angus breed.

T Bar C Cattle Co. Ltd. has been marketing seedstock for more than five decades and offers every aspect of livestock marketing from custom websites and sale catalogues to complete sale management. We are dedicated to high quality, strong integrity, and continued customer success. Our goal is to help you market your program to its truest potential no matter the size of your operation.

T Bar C Cattle Co. Ltd is proud to once again support the Canadian Angus Foundation.

donated by

**T Bar C Cattle Co. • tbarc.com
Chris Poley 306-220-5006 Bryan Kostiuk 306-933-4200 • info@tbarc.com**

LOT

54L

GOLF OR WINE PACKAGE IN KELOWNA



Enjoy a 3-day getaway for two in beautiful Kelowna, BC. Stay at the Best Western Plus Kelowna and customize your trip with your choice of experiences: play at one of **25 nearby golf courses**, or tour and taste at up to **8 local wineries**. Whether you're hitting the greens or sipping your way through wine country, this package offers the perfect weekend escape.

donated by

**Canadian Angus Association • www.cdnangus.ca
403-571-3580 • cdnangus@cdnangus.ca**

LOT

55L

**3 NIGHT'S HOTEL AND 2 REGISTRATIONS
FOR CONVENTION 2026**



BC Angus is excited to be hosting Convention June 24-26, 2026. They are offering a registration package including two full Convention registrations and three nights' accommodations at the host hotel in beautiful Kamloops, BC.

donated by

**BC Angus Association - cdnangus.ca/bc-angus-association
250-819-0858 • bcangusassoc@gmail.com**

LOT

56F

**2 ADULT MOUNTAIN LAKES AND
WATERFALLS TOUR PASSES**



The Canadian Angus Foundation is pleased to welcome back Pursuit, repeating last year's stunning offer of 2 Adult Mountain Lakes and Waterfalls Tour passes. Pursuit is a collection of inspiring and unforgettable experiences in iconic places including the Canadian Rockies.

This tour includes soaring mountain summits; the iconic emerald lakes Louise, Moraine, and Emerald; a visit to Takakkaw Falls, the second-highest waterfall in Canada; and a hot lunch at the historic Emerald Lake Lodge.

Fine print: subject to availability, valid June 1, 2025 to October 1, 2025 and June 1, 2026 to October 1, 2026. Tour must be booked at least 48 hours before the expected travel dates.

Total retail value is approximately \$535

donated by

Pursuit—Banff Jasper Collection
www.banffjaspercollection.com/brewster-sightseeing/mountain-lakes-waterfalls

LOT

57F

SASKATCHEWAN TOUR PACKAGE



The Saskatchewan Angus Summer Tour is not to be missed! Visit various herds in the Parkland area near Melville July 29 and 30 and enjoy some of the finest hospitality Saskatchewan has to offer. If you haven't ever been on the tour, you need to check it out. Package includes registration for two and two nights accommodation at the host hotel, the Best Stay Inn, Melville, SK



donated by

**Saskatchewan Angus Association • www.cdnangus.ca/saskatchewan-angus-association
306-537-1518 • office@saskatchewanangus.com**

LOT



58F

MEGAN WEIR COMMISSIONED PRINT

Building the Legacy 11 was the exclusive launch for the new Canadian Angus Foundation commissioned print, "Heading Home" by artist Megan Weir. The original is on display at Angus Central. Only 25 prints total will be available. The highest bidder will receive print #3, custom framed on fine art paper and signed by the artist.

Megan is a wife, mother, and sixth-generation rancher from Southeastern Alberta who is also a self-taught artist. Her medium of choice is oil paint. Megan describes her style as an expression of her experiences with agriculture combined with her personality.

To see more of her work, look up @meganweirart on Instagram and Facebook, or visit her website www.meganweir.com



donated by

**Canadian Angus Foundation • www.cdnangus.ca/foundation
306-537-1518 • bwagner@cdnangus.ca**

LOT



59F

ANGELA DAVIDSON RED PRINT

"The Red Angus" was unveiled at the Canadian Angus Association office during Convention 2015. Scotland's James Arnott commissioned the painting from Angela Davidson using his Red Angus bull as the model. The power and detail of the bull is outstanding and literally takes visitors' breath away when they walk into the office and see it for the first, second or tenth time. Canadian Angus secured the rights to market the print in Canada, and you only have one opportunity each year through Building the Legacy to add this masterpiece to your collection.



donated by

**Canadian Angus Foundation • www.cdnangus.ca/foundation
306-537-1518 • bwagner@cdnangus.ca**

LOT



60F

WENDY RISDALE LOOKING TO THE FUTURE PRINT

As part of the 100th Anniversary celebrations of the Canadian Angus Association in 2005, the Canadian Angus Foundation commissioned Wendy Risdale to complete these two paintings titled "Looking to the Future" and "Master of the Herd". We have only a handful of these prints in the 'vault' and to celebrate their 20th year are offering one of each print in this 13th edition of Building the Legacy!

Wendy Risdale is a self-taught artist who started her art career by doing animal portraits in pastels, eventually adding oil and acrylic paintings, wood carvings and jewelry to her portfolio.



donated by

**Canadian Angus Foundation • www.cdnangus.ca/foundation
306-537-1518 • bwagner@cdnangus.ca**

LOT



61F

**WENDY RISDALE
MASTER OF THE HERD PRINT**

As part of the 100th Anniversary celebrations of the Canadian Angus Association in 2005, the Canadian Angus Foundation commissioned Wendy Risdale to complete these two paintings titled "Looking to the Future" and "Master of the Herd". We have only a handful of these prints in the 'vault' and to celebrate their 20th year are offering one of each print in this 13th edition of Building the Legacy!

Wendy Risdale is a self-taught artist who started her art career by doing animal portraits in pastels, eventually adding oil and acrylic paintings, wood carvings and jewelry to her portfolio.



donated by

**Canadian Angus Foundation • www.cdnangus.ca/foundation
306-537-1518 • bwagner@cdnangus.ca**

LOT



62F

CAB 13 PIECE MODERN KNIFE SET

Sharp. Sleek. Stylish. Turn your kitchen into a culinary showroom with this 13-piece knife block. Each knife blade is forged from genuine German steel and features a triple-riveted and durable G-10 handle with decorative medallion and solid end. The heavy, balanced weight feels great in your hand while the micro-serrated steak knives cut everything like a medium-rare ribeye. This beautiful branded set contains an 8-in. chef knife, an 8-in. bread knife with serrated blade, a 9-in. slicer knife, a 3.5-in. paring knife, 6 steak knives with micro-serrated blades, scissors and an oval-shaped sharpening steel which are contained in a wooden knife block.



donated by

**Certified Angus Beef • shop.certifiedangusbeef.com/products
330-345-2333 • mconley@certifiedangusbeef.com**

LOT

63L A, B & C

**MAPLE SYRUP
3, ONE GALLON PACKAGES**

Since the late 1800s, the Sample family of Quebec has produced maple syrup from their maple trees. Starting from the 15th of February until the end of April when most Angus breeders are focused on winter calving, most of the Sample family can be found in the sugar bush or in the sugar house making maple syrup. They have never missed a year of syrup production, and the highest bidder will enjoy this quality Canadian maple syrup produced from more than 100 years of experience and dedication.



donated by

**Mac Angus Farms—The Sample Family
450-247-2696 • macangusfarms@gmail.com**

LOT



64F

SEAFOOD PACKAGE

Intercity Packers is a Canadian company that is committed to serving as the leading supplier of high quality, value-added, and customized meat and seafood solutions across Canada. They aim to be a model of sustainability in the Canadian marketplace. We are thrilled to welcome their second donation of a case of portioned salmon and a case of lobster tails. The high bidder can choose to create delicious surf and pairings or enjoy a multitude of salmon and lobster dishes in combination or on their own.



donated by

**Intercity Packers Meat and Seafood • intercitypackers.ca
Dustin Bohn 780-220-6327 • dustin.bohn@intercitypackers.ca**

LOT



65F

CUSTOM ENGRAVED CANADIAN ANGUS CONFERENCE 2025 CHARCUTERIE BOARD & DESSERT WINE SET



www.cudlobe.com

Proudly donated to the Canadian Angus Foundation, this one-of-a-kind charcuterie board features custom engraving commemorating the 2025 Canadian Angus Conference. Paired with a premium dessert wine, this elegant set offers a perfect balance of craftsmanship and celebration—an ideal centerpiece for your next gathering or a thoughtful gift that supports the future of the Angus breed.



SAMPLES ONLY

donated by

**Cudlobe Angus • cudlobe.com
Dyce 403-625-0981 • office@cudlobe.com**

LOT



66F

GENUINE ANGUS WINE— BOXED SET WITH GLASSES

Few pairings rival the timeless combination of premium Angus beef and fine wine. In collaboration with Vanessa Vineyards in the Similkameen Valley, world-renowned master winemaker Howard Soon has crafted a wine specifically designed to complement the rich flavours of Angus beef. With over three decades at the forefront of winemaking innovation, Howard is one of the first in his field to be appointed to the Order of Canada—an honour recognizing his immense contributions to the Canadian wine industry. His unwavering commitment to precision and terroir continues to shape exceptional wines that express the unique character of our vineyard.



donated by

**Canadian Angus Association • www.cdnangus.ca
403-571-3580 • cdnangus@cdnangus.ca**

LOT



67F

HEREFORD BORDER FINE ARTS FIGURINES

Have a look at these ceramic bull, cow and calf figurines, created by Border Fine Arts in Scotland which was known for its production of high quality, realistic, collectible figurines representing farm animals and life in the Scottish and British countryside. The Border Fine Arts ceramic company was in production from 1974-2016. This Hereford family are all in mint condition and come in their original boxes.



donated by

M & J Farms • mjsimmentalangus.com
Miles & Bonnie Glasman 204-773-6275 • mjsimmentalangus@gmail.com

LOT



68F

LEATHER BOUND HISTORY BOOK

In 2019, the Canadian Angus Foundation launched *The Breeds, the Legends, the History: Canadian Angus History Book, 2019 Edition*, the first Canadian Angus history book produced since 1985. This year, we're offering two limited edition leather-bound books that have not previously been available for purchase in beautiful custom boxes by Ty Wilson of Dead Wood Furniture.

The 560-page full-colour history book contains a comprehensive review of the history of the Angus breed, an overview of Angus in Canada, and 363 Canadian Angus member histories in the members' own words. This book will make you laugh and cry and will make you feel incredibly proud to be part of the Canadian Angus fraternity.



donated by

Canadian Angus Foundation • www.cdnangus.ca/foundation
306-537-1518 • bwagner@cdnangus.ca



for your support
THANK YOU

return undelivered catalogues to:

**Canadian Angus Association
292140 Wagon Wheel Blvd
Rocky View County, AB T4A 0E2**



**RETURN POSTAGE GUARANTEED
PORT DE RETOUR GARANTI**

